

Darcy Golla

Stage Manager

darcy@darcygolla.com | www.darcygolla.com | (918) 777-1402

Portfolio

Portfolio

Table of Contents

Hello, Dolly!	3
- Weekly Schedule	4
- Runing Order	5
Steel Magnolias	6
- Preset List.....	7
Joseph and the Amazing Technicolor Dreamcoat	9
- Run Sheet.....	10
The Shape of Things	14
- Production Meeting Minutes	15
Little Women: The Musical	17
- Daily Call	18
- Rail Run Sheet.....	19
- Performance Checklist.....	21
- Calling Script.....	23
TEXAS Outdoor Musical	33
- Who, What, Where	34
Welcome Wanders	44
- Digital Blocking Script	45
A Midsummer Night's Dream	57
- Line Notes	58
Ada and the Engine	59
- Production Analysis	60
- Rehearsal Report	64
- Props List.....	66
Ride the Cyclone	67
- Paper Blocking Script	68
- Performance Report	78
Godspell	80
- Scenic Minis.....	81
Rinaldo	85
- Character/Scene/Page Breakdown.....	86
- Shift Plot.....	88

Hello, Dolly!

Olney Theatre Center - 2025
Roberts Mainstage

Book: Micheal Stewart
Music and Lyrics: Jerry Herman
Based on *The Matchmaker* by Thornton Wilder
Director: Kevin S. McAllister
Music Director/Additional Orchestrations: Christopher Youstra
Choreographer: Eamon Foley
Production Stage Manager: Ben Walsh
Assistant Stage Managers: Fior Tat & Kate Kilbane
Rehearsal Assistant Stage Manager: Allison Bailey
Production Assistants: Sydney Enthoven & Darcy Golla
Scenic Designer: Ravi "Riw" Rakkulchon
Lighting Designer: Christina Watanabe
Costume Designers: Paris Francesca & Julie Cray Leong
Sound Designer: Matthew Rowe
Wig Designer: Rueben D. Echoles
Director of Production: Jerid Fox
Production Manager: Kristen Parker
Technical Director: Kat Kaweck



Production Overview

4 Week Rehearsal Process | Run of 60 Performances | 24 Cast Members | 14 Crew Members
Production Assistant with Deck Track | Flying/Moving/Automated Scenic Pieces | Consumable Food Prep

Photo Credit: Olney Theatre Center



Weekly Schedule

Monday, October 27 to Sunday, November 2, 2025

Schedule Subject to Change with Due Notice.
Daily Calls will be sent for days with rehearsals.

Monday, October 27 (Off)

AEA Day Off.

Tuesday, October 28 (7 out of 8)

2:00p Safety Walk
THEN Mic EQ
3:00p Spacing Onstage
5:00p Meal Break

6:00p Continue Spacing Onstage
10:00p End of Day

Wednesday, October 29 (7 out of 8.5)

2:00p Spacing Onstage
4:45p Meal Break

6:15p Actors into Mics
6:30p Wandelprobe
10:30p End of Day

Thursday, October 30 (7 out of 8.5)

12:00pm SM/Crew Call
2:00p Start of Tech Meeting
THEN Actors Into Mics, Costume, Wigs
THEN Tech
6:00p Meal Break

7:30p Actors Back Into Mics, Costume, Wigs
8:00p Continue Tech
10:30p Actors Released
Production Meeting

Friday, October 31 (8 out of 9.5) Happy Halloween!

12:00p SM/Crew Call
1:00p Actors into Mics, Costume, Wigs
1:30p Continue Tech
5:00p Meal Break (Dinner Provided)

6:30p Actors into Mics, Costume, Wigs
7:00p Continue Tech
10:30p Actors Released
Production Meeting

Saturday, November 1 (7 out of 8.5)

12:00p SM/Crew Call
1:00p Actors into Mics, Costume, Wigs
1:30p Continue Tech
5:00p Meal Break

6:30p Actors into Mics, Costume, Wigs
7:00p Continue Tech
9:30p Actors Released
Production Meeting

Sunday, November 2 (8 out of 9.5)

12:00p SM/Crew Call
1:00p Actors into Mics, Costume, Wigs
1:30p Continue Tech
5:00p Meal Break

6:30p Actors into Mics, Costume, Wigs
7:00p Continue Tech
10:30p Actors Released
Production Meeting

Please Note

- Please reference Daily Calls!
- Dinner will be provided on Friday in the Actors Hall.
- Donors will be joining us for a portion of Sunday's afternoon session, seated in the Mezzanine.

Act 1

Overture

Scene 1: NYC Street

(pp. 5-8)

Dolly, Ambrose, Ensemble

#1 - Opening Act 1

#2 - I Put My Hand In

#2a - Yonkers March

Scene 2: Feed Store/Train Station

(pp. 9-18)

*Dolly, Horace, Cornelius, Barnaby, Ambrose,
Ermengarde, Ensemble*

#3 - It Takes A Woman

#3a - It Takes A Woman (Reprise)

#4 - Put On Your Sunday Clothes

#4b - Incidental (Hat Shop)

Scene 3: Hat Shop/Deserted Store/Parade

(pp. 19-35)

*Dolly, Horace, Irene, Cornelius, Barnaby, Minnie,
Ambrose, Ermengarde, Mrs. Rose, Ensemble*

#5 - Ribbons Down My Back

#5a - Ribbons Down My Back (Reprise)

#6 - Motherhood March

#7 - Dancing

#7a - Incidental (I Put My Hand In)

#8 - Before the Parade Passes By

#9 - Finale Act 1

Act 2

#10 - Entr'acte

Scene 1: Hoffman House Hotel

(pp. 36-38)

*Horace, Irene, Cornelius, Barnaby, Minnie,
Ambrose, Ernestina, Ensemble*

#11 - Elegance

#11a - March To Harmonia Gardens

Scene 2: Harmonia Gardens Restaurant

(pp. 39-49)

*Dolly, Horace, Irene, Cornelius, Barnaby, Minnie,
Ambrose, Ermengarde, Ernestina, Rudolph,
Ensemble*

#12 - Waiters' Galop

#12a - Hello, Dolly - Agitato

#13 - Hello, Dolly

#14 - Waiters' Galop (Reprise)

#15 - Polka

Scene 3: Courtroom

(pp. 50-54)

*Dolly, Horace, Irene, Cornelius, Barnaby, Minnie,
Ambrose, Ermengarde, Ensemble*

#16 - It Only Takes A Moment

#16a - It Only Takes A Moment - Part II

#16b - End Of Courtroom Scene

#17 - So Long, Dearie

#17a - Change of Scene

Scene 4: Feed Store

(pp. 55-59)

*Dolly, Horace, Irene, Cornelius, Barnaby, Minnie,
Ambrose, Ermengarde, Ernestina, Rudolph,
Ensemble*

#18 - Finale Ultimo

Curtain Call

(pp. 59)

Full Company

#19 -Curtain Music

#20 - Exit Music

Steel Magnolias

Wagon Wheel Theatre - 2025
Wagon Wheel Center for the Performing Arts

Playwright: Robert Harling

Director: Brianna Borger

Production Stage Manager: Becka Kastner

Assistant Stage Manager: Darcy Golla

Assistant Stage Manager Intern: Halena Edwards

Scenic Designer: Jordan House

Lighting Designer: Lillian Meyers

Costume Designer: Haley D. Tynes

Sound Designer: Benjamin Culp

Wig/Makeup Designer: Jenifer Dow

Production Manager: Mike Higgins & Matthew Helpert

Technical Director: Jordan House



Production Overview

11 Day Rehearsal Process | Run of 10 Performances | 6 Cast Members | 5 Crew Members
Tracked and Managed Over 130 Props | Running Water Onstage | Consumable Beverages and Food Items

Photo Credit: Scott Micheals



Steel Magnolias

Preset List

Final
V.2
7/17/25
DRG

Item	7/16 Dress	7/17 #1	7/18 #2	7/19 #3	7/20 #4	7/22 #5	7/23 #6	7/24 #7	7/24 #8	7/25 #9	7/26 #10
Section 1 Side Table											
Pile of 4 Magazines											
- Readers Digest											
- Southern Hair											
- Top Model											
Bowl of Butterscotch											
Section 2 Side Table											
Box of Tissues											
Truvy's Desk											
Brown Phone											
Floral Mug w/ Water											
Notepad											
Pieces of Paper + Pencil											
Logbook + Pencil											
Address Book											
Client Cards Box											
Coiffure Card											
Desk Drawer Top Left											
4 Peppermints											
Mechanical Pencil											
Article of Princess Di											
Truvy's Salon Chair											
Truvy's Salon Cart											
- Fog In A Can											
- Short Hair Photo											
Annelle's Salon Chair											
Floral Cape											
Annelle's Tan Purse											
Annelle's Salon Cart											
Tissues											
Coffee Station											
Kettle of Tea w/ Water											
Hot Plate											
Pot of Fresh Coffee											
Pile of 3 Magazines											
- Field & Stream											
- North Shore											
- Cosmopolitan											
Trash Can											



Steel Magnolias

Preset List

Final
V.2
7/17/25
DRG

Item	7/16 Dress	7/17 #1	7/18 #2	7/19 #3	7/20 #4	7/22 #5	7/23 #6	7/24 #7	7/24 #8	7/25 #9	7/26 #10
Broom + Dustpan + Fly Swatter											
Kitchenette											
6 - 8 Salon Towels on Washer											
Coffee Tray											
- Tea Supplies											
- Sugar Jar											
- Creamer											
- 4 Spoons											
- Napkin											
- 6 Mugs											
4 Cups											
Plate											
Mr. Coffee Machine w/ Water											
- Coffee Filters											
- Coffee Can											
- Small Jar											
Bottle of Juice in Mini Fridge											
Recipe Box + Pencil											
Pieces of Paper											
Full Bottle of Nail Polish Remover											
Pot on Stove											
Wash Station											
Shampoo Bottle											
Conditioner Bottle											
Container of 2 -3 Claw Clips											
Manicure Hutch											
Container of New Nail Polishes											
Jar of Catton Pads											
2 Pump Bottles of Nail Polish Remover											
Empty Bottle of Nail Polish Remover											
Nail File											
Bottle of Lotion											
Cuticle Stick											
Pink Nail Kit											
- Cuticle Pusher											
- Nail File											
- Nail Clippers											
Box of Tissues											
Container of Old Nail Polishes											
2 Nail Buffers											

Dir: Brianna Borger

darcy@darcygolla.com

ASM: Darcy Golla

PSM: Becka Kastner

Page 2 of 4

ASM Intern: Halena Edwards

Joseph and the Amazing Technicolor Dreamcoat

Wagon Wheel Theatre - 2025
Wagon Wheel Center for the Performing Arts

Book and Lyrics: Tim Rice

Music: Andrew Lloyd Webber

Based on the story of Joseph in Genesis

Director/Choreographer: Scott Micheals

Music Director: Thomas Hall

Production Stage Manager: Litsa Vlahos

Assistant Stage Manager: Darcy Golla

Assistant Stage Manager Intern: Halena Edwards

Scenic Designer: Mike Higgins

Lighting Designer: Seif Salotto-Cristobal

Costume Designer: D. J. Reed

Sound Designer: Benjamin Culp

Wig/Makeup Designer: Jenifer Dow

Production Manager: Mike Higgins & Matthew Helpert

Technical Director: Jordan House



Production Overview

14 Day Rehearsal Process | Run of 11 Performances | Theatre in the Round | 34 Cast Members
8 Crew Members

Photo Credit: Scott Micheals



Joseph and the Amazing Technicolor Dreamcoat

Run Sheet

Final
V.7
6/14/2025
DRG

Time	Who	Location	Action	Cue	Notes
Act I					
Overture					
Prologue					
0:02:15	K. Avolio	Main	ENT w/ Cell Phone	End of Overture	
	Youth Ensemble	Main	ENT w/ Cell Phones, 2 Backpacks, 3D Glasses	End of Overture	
0:02:30	Roe	Passerelle	MOVE Bolder to Passerelle	End of Overture	
0:03:00	K. Alivio	Lobby	EXT w/ Cell Phone	"right this way."	
	Youth Ensemble	Lobby	EXT w/ Cell Phones, Backpacks, 3D Glasses	"right this way."	Excluding W. Phillips
0:03:15	Nate, Josh	Pit	TRAP Cue Lower (Pedestal)	SM Call/During Video	
0:03:30	Z. Berencsi	Dog	STRIKE Pedestal	During Video	
	Roe	Main	BOLDER Down Aisle	Wyatt halfway up the ramp	
0:03:40	Roe	Main	STRIKE Bolder	After Wyatt runs off ramp	
	Nate, Josh	Pit	TRAP Cue Restore	SM Call/ During Video	
0:03:44	K. Avolio	Lobby	ENT w/ Cell Phone	End of Video	
	Youth Ensemble	Lobby	ENT w/ Cell Phones, Backpacks, 3D Glasses	End of Video	Excluding W. Phillips
0:03:50	Roe	Hallway	MOVE Bolder to Rehearsal Hall	After Video Sequence	
Scene 1					
#1 Prologue/Any Dream Will Do					
0:04:15	Roe	Main	SET Rover	"But I don't say who is"	
0:05:05	Darcy	Hallway	PAGE Curtain	Instrumental after "And it could be you."	for Joseph ENT close when Joseph is at base of aisle.
0:05:35	Darcy	Rail	FLY IN Coat Hanger	"Any dream will do"	Joseph taking off coat.
0:06:10	Darcy	Rail	FLY OUT Coat	"My golden coat flew out of sight"	Coat On Hanger Joseph motions up.
0:07:07	I. Connor	Lobby	ENT w/ Staff		
	J. Devine, B. Williamson	Lobby	ENT w/2 Farm Tools		



Joseph and the Amazing Technicolor Dreamcoat

Run Sheet

Final
V.7
6/14/2025
DRG

Time	Who	Location	Action	Cue	Notes
	T. Lightsey, N. Nasta	Lobby	ENT w/ 2 Farm Tools + 2 Sheep		
	T. Squires	Lobby	ENT w/ Stachel w/ Baseball + Glove+ Money + Keys		
	A. Concepción, A. Cahill	Lobby	ENT w/ 2 Baskets		
	R. Lopez-Montilla	Holiday	ENT w/ Staff + Sheep		
	Z. Berencsi, A. Dunbar	Holiday	ENT w/ 2 Farm Tools		
	T. SinClair, L. Ifill	Holiday	ENT w/2 Baskets		
	S. Byrd, J. Rhyne	Dog	ENT w/ 2 Staffs		
	A. Syi	Dog	ENT w/ Farm Tool		
	S. Lindwall	Dog	ENT w/ Basket		
0:07:25	Darcy	Main	PAGE Curtain	Final "Any dream will do" / Joseph Walking Up the Aisle	For Joseph EXT close on button of number.
Following	Roe	Hallway	STRIKE Rover	Following Curtain Close/LX Out	
Scene 2					
#2 Jacob and Sons					
#2a Joseph's Coat					
0:09:40	L. Smith	Holiday	EXT w/ 1 Sheep		Youth Ensemble
	W. Olson, F. Levinson	Dog	EXT w/ 2 Sheep		Youth Ensemble
0:09:48	A. Cahill, T. Sinclair, S. Lindwall, A. Concepcion, L. Ifill	Lobby	EXT w/ 5 Baskets		
0:10:35	Darcy	Rail	FLY IN Coat	On Jacob Clap during Joseph's Charm Verse	
0:10:55	Darcy	Rail	FLY OUT Hanger	Coat Off of Hanger/Actors Clear	
Scene 3					
#3 Joseph's Dreams					
0:13:18	T. Squires	Holiday	EXT w/ Stachel w/ Baseball, Glove, Money, Keys		



Joseph and the Amazing Technicolor Dreamcoat

Run Sheet

Final
V.7
6/14/2025
DRG

Time	Who	Location	Action	Cue	Notes
0:14:43	Youth Ensemble	Dog	EXT w/ 6 Staffs + 5 Farm Tools + Cell Phones + 3D Glasses		Excluding L. Smith + K. Scacco
Following	Darcy	Hallway	ASSIST Youth Ensemble w/ Props		
0:15:00	Roe, Jordan/Matthew	Hallway	MOVE Chariot to Hallway + TURN ON LEDs	End of West Side Moment / "The dreams of our dear brother are..."	Near Curtain
Following	Roe	Hallway	SET Rover	Following Chariot Move	
0:16:15	E. Worsham	Main	ENT w/ Ice Cream Cone		
	Youth Ensemble	Main	ENT w/ Cell Phones + Goat Backpack		Excluding l. Smith + K. Scacco
0:16:25	E. Worsham	Lobby	EXT w/ Ice Cream Cone		
	W. Phillips, B. Vandiver	Lobby	EXT w/ Cell Phones		Youth Ensemble
#4 Poor, Poor Joseph					
0:16:45	Nate, Josh	Pit	TRAP Cue Lower	SM Call / Dance Circle	
0:16:50	W. Phillips, B. Vandiver	Lobby	ENT w/ Cell Phones		
0:17:10	W. Phillips	Lobby	EXT w/ Coat		
0:17:20	Darcy	Main	PAGE Curtain	"When some Ishmaelites,"	for Chariot ENT close when at base of aisle.
Following	Roe	Hallway	STRIKE Rover	Following Curtain Close/LX Out	
	Roe	Hallway	CHANGE ERS Barrel + REMOVE Gobo Rotator	Following Rover Strike	
0:17:24	A. Cahill, A. Storm	Main	ENT w/ 2 Handheld Mics		
	T. Squires, L. Fisher	Main	ENT w/ Chariot + Gold Chains + Rope		
0:18:45	Nate, Josh	Pit	TRAP Cue Restore	SM Call/Joseph Out of Pit	



Joseph and the Amazing Technicolor Dreamcoat

Run Sheet

Final
V.7
6/14/2025
DRG

Time	Who	Location	Action	Cue	Notes
0:19:11	Darcy	Main	PAGE Curtain	"... speak Egyptian very well."	for Chariot EXT close when clear Women also EXT.
	T. Squires, L. Fisher	Main	EXT w/ Chariot		
	A. Cahill, A. Storm	Main	EXT w/ 2 Handheld Mics		
	E. Worsham	Main	EXT w/ Rope		
Following	Roe, Jordan/Matthew	Hallway	MOVE Chariot to Rehearsal Hall + TURN OFF LEDs	Following curtain close.	
0:19:32	Z. Berencsi, J. Devine	Lobby	EXT w/ Chains + Goat Backpack		
0:20:00	T. Lightsey	Dog	ENT w/ Guitar + Barrel		
	S. Lindwall	Dog	ENT w/ Firepit		
Scene 4					
#5 One More Angel in Heaven/Hoedown					
0:20:25	R. Montilla-Lopez, A. Dunbar, J. Devine, A. Syi, N. Nasta, I. Connor, Z. Berencsi, B. Williamson, S. Byrd, J. Rhyne	Holiday	ENT w/ 10 Straw Hats		
	Roe	Main	PAGE Curtain	Instrumental Intro w/ Brothers Crying (Top of Number)	
	Darcy, Jo/Matthew	Main	SET CYC	Instrumental Intro w/ Brothers Crying (Top of Number)	
Following	Roe	Main	SET Rover	Following Curtain Page	
0:21:32	S. Lindwall	Main	ENT w/ Harp		
0:21:50	S. Lindwall	Main	EXT w/ Harp		
	Darcy, Jordan/Matthew	Main	STRIKE CYC	End of Sophie's Solo/Rover LX Out	

The Shape of Things

Oklahoma State University Theatre Council - 2025

Jerry Davis Studio Theatre

Playwright: Neil LaBute

Director: Jaycee Mathews

Stage Manager: Darcy Golla

Assistant Stage Manager: August Ross

Scenic Concept: Bridget Colatruglio

Lighting Designer: Eamon Stone

Costume Designer: Evie Reitan

Sound Designer: Catelyn Pon Jackson

Production Manager: Jenna Hooper

Technical Director: Chris Bordman



Production Overview

6 Week Rehearsal Process | Run of 4 Performances | 4 Cast Members | 5 Crew Members

Fully Student Produced Production | Called Light, Sound, Deck, and Actor Entrance Cues with Cue Lights

Photo Credit: Evie Reitan



The Shape of Things

Production Meeting Minutes

Thursday, January 30th, 2025

#2
V.1
1/30/2025
DRG

Meeting Start:	10:00pm	Meeting End:	10:43pm
Elapsed Time:	43 minutes	Location:	Zoom

Report Written By:	Darcy Golla
Next Meeting:	TBD

Attendance

Production Team:	A. Blaskovich, C. Bordman, B. Colatruglio, D. Golla, J. Mathews, C. Pon-Jackson, E. Reitan, A. Ross, E. Stone
-------------------------	---

Notes: *PLEASE READ ENTIRE SECTION AS NOTES MAY APPLY TO MULTIPLE AREAS*

General Notes:

No notes, thank you.

Scenic:

1. Bridget presented her scenic design concept.

Properties:

1. Ava presented her preliminary props list.
2. Evie will pull some watches when they look through the department's costume stock.
3. Jaycee and Ava will be meeting to discuss props.

Costumes:

1. Evie presented her costume design concept.
2. Evie plans for there to be multiple quick changes for Adam and Evelyn, and will be working to figure out how to accomplish each change.
3. Jaycee has a black lanyard we can use for Adam and will bring it to Evie.

Lighting:

1. Eamonn presented his lighting design concept.
2. Eamonn would like to purchase some gobos once the lighting budget is set.
3. Jaycee, Bridget, and Eamonn will meet to discuss the idea of using shadow work to represent scenic elements.

Sound:

1. Catelyn presented her sound design concept.
2. We will be using the same speaker plot that is currently hung in the Davis for *Small Mouth Sounds*.
3. Catelyn has been talking to Thess about his current input/output list for sound setup in the Davis.
4. Catelyn is discussing mic options for Evelyn during the presentation scene with Harley. They are considering doing a sound workshop on the setup later in the semester.



The Shape of Things

Production Meeting Minutes

#2
V.1
1/30/2025
DRG

Notes: *PLEASE READ ENTIRE SECTION AS NOTES MAY APPLY TO MULTIPLE AREAS*

Director:

1. We started rehearsals this week, they are going well with a lot of good work.
2. We are considering setting up a date for designer presentations for the cast in rehearsals.

Technical Direction:

1. If you have any questions about logistics, department resources, or purchasing items for show talk to Chris.

Stage Management:

No notes, thank you.

Little Women: The Musical

Oklahoma State University - 2024

Vivia Nail Locke Theatre

Book: Allan Knee

Music: Jason Howland

Lyrics: Mindi Dickstein

Based on the novel by Louisa May Alcott

Director: Devon Hunt

Music Director: Eric David Frei

Fight/Intimacy Director: Matthew Timothy Smith

Choreographer: Leah Brown

Stage Manager: Darcy Golla

Assistant Stage Manager: Livvy Higbee

Scenic Designer: Robin Vest

Lighting Designer: Fabian J. Garcia

Costume Designer: Jason Estala

Sound Designer: Harley Roché

Production Manager: Marley Giggey

Technical Director: Leslie Currell



Production Overview

8 Week Rehearsal Process | Run of 4 Performances | 13 Cast Members | 19 Crew Members | Live Orchestra
Flying/Moving Scenic Pieces | Called Light, Spotlight, Sound, Fly Rail, and Deck Cues

Photo Credit: Lee Brasuell



DEPARTMENT OF
THEATRE
College of Arts and Sciences

Little Women

Daily Call

9/5/2024
DRG

Thursday, September 5th, 2024

Time	Rehearsal Info	Called	Location
6:30pm	Intimacy Coaching - I.7	S. Harrod, N. Horton, E. Konomi, L. Propst	SCPA 032
	Stage I.3e/4a Massachusetts <ul style="list-style-type: none">Libretto: Pg. 44 -48	P. Atkinson, H. Breitenstein, A. Dunavant, K. Reed	SCPA 118
7:00pm	Intimacy Coaching - I.5	H. Breitenstein, L. Propst, A. Rhodes, C. Shahbazi	SCPA 032
	Stage I.3b Take a Chance <ul style="list-style-type: none">Libretto: Pg. 34 - 37	S. Harrod, N. Horton, E. Konomi	SCPA 118
7:30pm	Stage I.4b Five Forever <ul style="list-style-type: none">Libretto: Pg. 48 – 52	H. Breitenstein, A. Dunavant, S. Harrod, N. Horton, E. Konomi, L. Propst, K. Reed, A. Rhodes	
8:15pm	Run I.3-4 <ul style="list-style-type: none">Libretto: Pg. 24 - 52	P. Atkinson, H. Breitenstein, A. Dunavant, S. Harrod, J. Hooper, N. Horton, E. Konomi, L. Propst, K. Reed, L. Reid, A. Rhodes, C. Shahbazi	
Following	Notes		
9:30pm	End of Day		

Notes

1. Costume fitting schedule for this week:
 - Thursday, September 5th
 - Logan Propst – 1:30pm
 - Kyndall Reed – 2:15pm
 - Friday, September 6th
 - Sav Harrod – 11:00am

Name	First Call
Parker Atkinson	6:30pm
Hayley Breitenstein	6:30pm
Alyssa Dunavant	6:30pm
Savannah Harrod	6:30pm
Thess Holloway	Not Called
Jenna Hooper	8:15pm
Noah Horton	6:30pm

Name	First Call
Eleni Konomi	6:30pm
Logan Propst	1:30pm
Kyndall Reed	2:15pm
Londi Reid	8:15pm
Audrey Rhodes	7:00pm
Cyrus Shahbazi	7:00pm

Fall 2024
Director: Devon Hunt
SM: Darcy Golla

darcy.golla@okstate.edu

Page 1 of 1

OSU Theatre
ASM: Livvy Higbee
ASM:



DEPARTMENT OF
THEATRE
College of Arts and Sciences

Little Women

Rail Running

V.10
10/9/2024
DRG

Time	Cue #	Cue LX	LS #	Unit	In/Out	Spike Color	Speed	Who
#8 Take A Chance On Me								
#9 Take A Chance - Transition								
0:39:15	24	WHITE	8	DS Chandelier	OUT	ORANGE		K. Ayres
			16	MS Chandelier	OUT	ORANGE		E. Cook
			25	US Chandeliers	OUT	ORANGE		J. Sepulveda
After "Take A Chance – Transition"								
#10 Better Reprise								
0:44:43	28	BLUE	28	Roof	OUT	YELLOW		J. Sepulveda
#10A Concord Transition								
0:45:59	32	BLUE	28	Roof	IN	PINK		J. Sepulveda
After "Concord Transition"								
Scene 4								
#11 Off to Massachusetts								
After "Off to Massachusetts"								
#12 Five Forever								
#13 Transition								
Scene 5/6								
#14 More Than I Am								
After "More Than I Am"								
#14A Transition to Attic								
1:06:55	36	BLUE	28	Roof	IN	GREEN		J. Sepulveda
Scene 7								
#15 Take A Chance Reprise								
After "Take A Chance Reprise"								
#16 Astonishing								
1:11:50	40	BLUE	28	Roof	OUT	PINK		J. Sepulveda
Intermission								
-15:00			35	NYC Window	IN	GREEN		E. Cook
Act II								
Scene 1								
#18 Weekly Volcano Press								
After "Weekly Volcano Press"								
#18A NYC to Concord Transition								
0:12:29	48	GREEN	35	NYC Window	OUT	ORANGE		J. Sepulveda
Scene 2								
#18B Beth Plays Piano								
After "Beth Plays Piano"								

Fall 2024

darcy.golla@okstate.edu

OSU Theatre

Director: Devon Hunt

Page 3 of 6

SM: Darcy Golla



DEPARTMENT OF
THEATRE
College of Arts and Sciences

Little Women

Rail Running

V.10
10/9/2024
DRG

Time	Cue #	Cue LX	LS #	Unit	In/Out	Spike Color	Speed	Who
#19 Off to Massachusetts Reprise								
#19A Jo to Professor Bhaer Transition								
0:15:55	50	WHITE	28	Roof	OUT	YELLOW		J. Sepulveda
			35	NYC Window	IN	GREEN		J. Harbour
#20 How I am								
Scene 3								
#20A To the Beach								
0:20:02	56	WHITE	28	Roof	OUT	ORANGE		J. Sepulveda
		WHITE	35	NYC Window	OUT	ORANGE		E. Cook
		WHITE	21	Cape Cod Panorama	IN	GREEN		K. Ayres
0:20:05	STBY	n/a	9	Kite	In	GREEN		J. Sepulveda
After "To The Beach"								
#21 Some Things Are Meant to Be								
0:24:35	58	GREEN	9	Kite	OUT	HALFWAY		J. Sepulveda
0:26:50	59	GREEN	9	Kite	OUT	ARBOR		J. Sepulveda
0:27:15	60	WHITE	21	Cape Cod Panorama	OUT	ORANGE		E. Cook
0:27:34	62	BLUE	28	Roof	IN	PINK		J. Sepulveda
Scene 4								
#22 The Most Amazing Thing								
After "The Most Amazing Thing								
#22A To The Attic								
0:36:01	63	BLUE	28	Roof	IN	GREEN		J. Sepulveda
After "To The Attic"								
#23 Days of Plenty								
#24 The Fire Within Me								
0:43:06	64	BLUE	28	Roof	OUT	YELLOW		J. Sepulveda
#24A After Fire Within Me								
0:46:12	68	BLUE	28	Roof	IN	PINK		J. Sepulveda
Scene 5								
#24B Professor Bhaer Entrance								
After "Professor Bhaer Entrance"								
#25 Small Umbrella in the Rain								
After "Small Umbrella in the Rain"								
#26 Volcano Reprise								
#27 Bows								

Fall 2024

darcy.golla@okstate.edu

OSU Theatre

Director: Devon Hunt

Page 4 of 6

SM: Darcy Golla



DEPARTMENT OF
THEATRE
College of Arts and Sciences

Little Women

SM Performance Checklist

V.1
10/11/2024
DRG

Pre-Show	
1 Hour 45 Minutes	
Unlock Scene Lab	
Scene Lab Lights ON	
Open Scene Lab Door – Yellow Key	
Unlock Cages	
Cages Lights ON	
Unlock Spray Booth	
Unlock Props Cabinet	
Locke Work Lights ON	
Unlock/Prop Open SR Door	
Open Green Room	
Unlock Booth	
Booths Lights ON	
SM Video Monitors ON	
LX Monitor On	
Plug In iPad	
1 Hour 30 Minutes	
Crew Present	
Check Sign In	
Headsets Out/Radios	
Ghost Light Struck	
Stage Swept	
Platform + Deck Mopped	
Rail Preshow Complete	
Lights Preshow/Channel Check	
Wardrobe Presets Complete	
Props and Onstage Presets Complete	
Speaker/God Mic Check Complete	
Video Monitors ON	
Doorstoppers on USC + SR Doors	
1 Hour 15 minutes	
Cast Present	
Check Sign In	
PAGE – Ready for Mic Check	
Actors into mics/ Mic Check Complete	
Walk Stage for Hazards	
Check Props Presets	
1 Hour 15 minutes	

Fall 2024
Director: Devon Hunt
SM: Darcy Golla

darcy.golla@okstate.edu

Page 1 of 4

OSU Theatre
ASM: Livvy Higbee
ASM:



DEPARTMENT OF
THEATRE
College of Arts and Sciences

Little Women

SM Performance Checklist

V.1
10/11/2024
DRG

PAGE – Time for Fight/Intimacy Call	
Wagon Out for Fight/Intimacy Call	
Fight Call/Intimacy Call Complete	
Check Onstage Presets	
Check in with FOH	
50 minutes	
PAGE – Time for Company Warmup	
Final Check	
Black Out Check	
Run Lights ON	
Backstage Lights OFF	
Cage Lights OFF	
Scene Lab Lights OFF	
Scene Lab Door Closed	
SL Props Set	
Under SL Platform Set	
Pencil on Jo's Desk	
Costumes Preset in Trunk	
Paper + Pencils on Writing Desk	
Couch Onstage - Teal Spikes	
Charred Paper Set	
LX 1	
SQ 5	
Announce House Open	
FOH – We are clear to open at (7:00pm/1:30pm)	
Half Hour	
PAGE - 30 minutes to TOS/House Open	
Company Warmup Complete	
House Open	
SM to Booth	
PAGE - 10 minutes to Places	
PAGE - 5 minutes to Places	
Headset Roll Call	
PAGE - Actor PLACES	
FOH Check-in	
WARN – 2 minutes	
House Turnover	
SR & SL Set	
Intermission	
PAGE - Intermission back at _____	

Fall 2024
Director: Devon Hunt
SM: Darcy Golla

darcy.golla@okstate.edu

Page 2 of 4

OSU Theatre
ASM: Livvy Higbee
ASM:

The Weekly Volcano Press 18 "Little Women"

Cue: JO:
 "And I have some
 amazing news!"

LX 182

Spot 1

Jo: 1 2 3

I came to New York on a dream. I knew it might take me a-while. But

This block contains the first three measures of the musical score. The vocal line (Jo) starts with a whole rest in measure 1, followed by eighth notes in measures 2 and 3. The piano accompaniment features a steady eighth-note pattern in the right hand and a bass line in the left hand. A yellow highlight is placed under measure 1.

Jo: 4 5 6

all I've been hear-ing since I ar-rived Is 'leave it right there on the pile.' So to-

This block contains measures 4-6. The vocal line continues with eighth notes. The piano accompaniment has a more complex texture with chords and moving lines in both hands. A yellow highlight is placed under measure 4.

Jo: 7 8 9 Ritard

day I woke up and de-cid-ed it's time. Time to a-chieve, time to thrive, time to

This block contains measures 7-9. The vocal line features a mix of eighth and quarter notes. The piano accompaniment includes chords and a descending bass line. A yellow highlight is placed under measure 7. The tempo marking 'Ritard' is present above measure 9.

2 LX 183 #18. The Week LX 184 press

Jo: 10 11

climb! Some-times when you dream, Your dream is just a

BHAER: "Miss March, tell us what happened."

This block contains measures 10-11. The vocal line has a whole rest in measure 10 and then eighth notes in measure 11. The piano accompaniment has a whole rest in measure 10 and then a complex chordal texture in measure 11. A yellow highlight is placed under measure 10. The tempo marking 'Allegro' is present above measure 11.

Jo: 12 13

guess. Some-times when you work real-ly hard, You don't know if

This block contains measures 12-13. The vocal line continues with eighth notes. The piano accompaniment features a steady eighth-note pattern in the right hand and a bass line in the left hand.

Jo: 14 15

you'll e-ver find suc-cess. So I grabbed a stor-y to sell And got

This block contains measures 14-15. The vocal line has eighth notes in measure 14 and a half note in measure 15. The piano accompaniment includes chords and a descending bass line.

Jo: 16 17

read-y to raise hell! Then I marched out the door, And head ed right for The

This block contains measures 16-17. The vocal line has eighth notes in measure 16 and a half note in measure 17. The piano accompaniment includes chords and a descending bass line.

STBY
Spot 1 out

#18. The Weekly Volcano Press

Jo 18 Week-ly Vol - can - o Press. BHAER: "Henry Dashwood, now he is a man of taste--" Dash - wood was a

LX 185

Jo 21 fiend, He sneered at my dis - tress. Tossed my stor - y

STBY
SQ 35

Jo 23 high on a stack. But I was de - ter - mined I would pro - gress! I said:

Jo 25 'Sir, I'll wait while you read.' But, a - las, he — dis - a - greed. So I

LX 186
Spot 1

#18. The Weekly Volcano Press

Jo 27 jumped on a chair And read it right there At the Week-ly Vol - can - o

LX 187

BHAER: "You did what? MRS. KIRK: "Oh my!" CLARISSA/JO: "Keep away from me you wretch. BRAX/JO: "I cannot keep away."

Jo 29 Press!

sub *p*

STBY
Spot 1 up on Clarissa

BRAXTON: "Your beauty draws me. BRAX/JO: "Your passion ignites me--" BHAER: "Ah, it's the horror in it! The blood bath."

LX 188

SQ 35
No Q#

LX 189
No Q#

Spot 1

JO: "That's the one! I took to heart what you said-- I embellished. I made it better. Lightning strikes! Thunder claps!"

Braxton 34 [Safety] I've got to

mf

STBY
Spot 2 to pick up Rodrigo ENT USC Press

37 I de - fy you! Let me by you! Let

have you! I will take you!

mp

LX 190

46 go! Let go! Let go! Let go! Let go!

LX 191
Spot 2

JO: "Rodrigo appears in magnificent **splendor**" RODRIGO: "Unhand that woman, villain!"

f

LX 192

49 BRAXTON/CLARISSA: "Who are you?" I am your des - ti - ny. — Your bit - ter - est foe.

STBY
Spot 1 + 2 out

50 Rodrigo: 51 52

w/Sob

#18. The Weekly Volcano Press **LX 193**

6 54 I've come to a - venge your crimes of ten years a - go. 55 56 57

RODRIGO: "Run to the forest! Run!" CLARISSA: "I can't! The forest is dangerous! My sister went in there and never returned."

58 59 60 61

RODRIGO: "You must risk it. You must take the dark path" BRAXTON: "She will never escape me!" RODRIGO: "Hurry!" BRAXTON: "En garde!"

62 65 66 *Ritard* 67

LX 194
Spot 1 + 2

68 Jo: 69

RODRIGO: "Go-- now!" [BRAXTON flees] Dash - wood was a -

f *mf*

#18. The We

STBY
Spot 1 to pick up on Clarissa ENT SR

Jo 70
ghast. But I could not care less! Words I spoke ig -

mp

LX 195

Jo 72 3 73 3
ni - ted the air. I felt like a pub - lish - ing li - on - ess! That's when

STBY
Spot 2 to pick up Hag ENT USC

Jo 74 3
Dash - wood start - ed to shout and I thought he'd throw me out! But then

LX 196

Jo 76 3 3 77 3 78
I per-ser-vered and a for-est ap-peared at the Week-ly Volca-no Press!
JO: "The forest is dark and scary..."
sub p

8 Clarissa ENT SR Spot 1 Volcano Press

JO: "Clarissa enters, trembling, fearful of what fate awaits her."

LX 197
Spot 2

Hag 81 82 83
She comes to a fork in the road and stops." CLARISSA: "Which way do I go?" JO: "A hag appears." I can
glissando (gliss. on cue)
fp

Hag 84 85
help you choose, But you must make a sac - ri-fice. Give me

mp

LX 198

Hag 86 87
some - thing, dear. Those combs are nice.

Clarissa:
With -

STBY
Spot 2 out

#18. The Weekly Volcano Press

9

Hag: 88 Per - haps a hag as dull as me? 89 You'll

Clar.: 88 out these combs what will I be? 89 I can't!

Hag: 91 nev - er know your des - ti - ny un - less you give up van - i - ty. 92 93

Clar.: 91 I've got to know. Please 92 93

LX 199

10

Hag: 94 Your fate a - watis you there. 95 96

Clar.: 94 show me where to go. 95 96

LX 200
Spot 2

STBY
Spot 2 to pick up Troll on ENT USL

105

Hag: "The path is perilous. She avoids swamps."

JO: "Loses her footing. Her shoes tumble off. The sleeve of her dress gets caught on a twisted limb."

106

LX 201

JO: "She comes to wild rapids and can go no further."

107 108

[Safety]

#18. The Weekly Volcano Press

11

LX 202
Spot 2

109 110 111 Troll: CLARISSA: "How do I get across?" JO: "A Troll appears." If you want to cross: you must

Snapped Pizz.

112 113 114 Troll: pay me! I've the on - ly boat that can get you there a - live. I

115 116 117 Troll: see you wear a neck-lace that holds a pret - ty jewel. My price to get a - cross is what you're

#18. The Weekly Volcano Press

12

118 119 Troll: wear - ing round your neck. Oh how its glit - ter makes me drool. Clarissa: I've

STBY
Spot 1 full
Spot 2 out

Sn. Pizz.

121 Clarissa: noth - ing left but this; my pros - pects are so bleak. You'll

LX 203

122 123 124 Troll: nev - er know what wis - dom is un - til you give up all your rich - es. Here: it's yours! Now

#18. The Weekly Volcano Press

13

125 126 127

Troll

Clarissa

show me dis - tant shores.

mp

LX 204

Spot 1 + 2

STBY

Spot 1 out

Jo:

Some - times when you dream _____ Your dreams come true _____ In ex -

129

Spot 1

Jo:

130 131

traor - di - nar - y ways. Sud - den - ly a day can be so a - maz - ing. And

14

STBY
Spot 1 to pick up Clarissa ENT SR
Spot 2 pick up on Knight ENT USC

Jo

some - times when you yearn you burn the air,

LX 205

Spot 1 + 2

Jo

134 135 136

And some - one else feels the flame you al - ways knew was there! KNIGHT: "Stop, please!"

sub p

STBY
SHIFT 8

CLARISSA: "I cannot stop." KNIGHT: "Can you not give a tired old knight some assistance?" CLARISSA: "I have nothing left to give."

137 138 139

STBY

Spot 2 out

LX 206

KNIGHT: "Give me your time." CLARISSA: "My fate awaits me." CLARISSA: "Then take mine. And take my shawl. Ragged as it is."

Slower

140 141 142 143

poco ritard

mp

15

16

#18. The Weekly Volcano Press

Spot 2

161 162 163

Jo: "Never has she been so determined. She is on fire!" JO: "Pity she hadn't taken dueling lessons."

3 3 3 3

LX 210

Spot 2

STBY

Spot 1 + 2 out

164 166 Jo:

JO: "Out of nowhere, who should appear but the long forgotten **Rodrigo!**" RODRIGO: "This is your end, villain! I've waited a lifetime to destroy you." BRAXTON: "Who are you?" And then
RODRIGO: "I am your worst nightmare, Braxton I am..."
RODRIGO TOO: "Her sister!"

Rodrigo 2

stabs Braxton

LX 211

LX 212

Spot 1 + 2

168 BHAER: "Miss March!"

Jo: Dash - wood got on his knees, cry - ing 'Sell this to me, please!' Then he

mp

169 3 3 170 3 171

ord-ered four more. Now I'm writ-ing for the Week-ly Vol-ca-no Press! _____

cresc. poco a poco

LX 213

#18. The Weekly Volcano Press

17

Jo: I'm read - y for des - ti - ny! My tress - es are

Clarissa/Rodrigo: I'm read - y for des - ti - ny! My tress - es are

Rodrigo: I'm read - y for des - ti - ny! My tress - es are

Prof B./ Hag/Troll
Mrs. K./Knight/Braxton

Some - times when you dream

Jo: curled. I'll take what is right - ly mine with cur - tains un -

Clarissa/Rodrigo: curled. I'll take what is right - ly mine with cur - tains un -

Rodrigo: curled. I'll take what is right - ly mine with cur - tains un -

PB, H, T
M K, K, B

Your dreams come true. In ex - traor - di - nar - y ways. Sud - den - ly a

STBY
SHIFT 9

Jo: furred. I will not quit, I won't be for - got - ten. I will

furred. I will not quit, I won't be for - got - ten. I will

furred. I will not quit, I won't be for - got - ten. I will

day can be so a - maz - ing. And some - times when you yearn

LX 214

Jo: shine, I'll daz - zle and more! I'm read - y to

shine, I'll daz - zle and more! I'm read - y to

shine, I'll daz - zle and more! I'm read - y to

you burn the air

#18. The Weekly Volcano Press

19

Jo

180 take a bow! I've tak en a sol emn vow! My des ti ny

181 take a bow! I've tak en a sol emn vow! My des ti ny

182 take a bow! I've tak en a sol emn vow! My des ti ny

And then you are not the same, The world be-comes yours to claim

LX 215

Jo

182 here and now: I'll as ton ish the

183 here and now: I'll as ton ish the

184 here and now: I'll as ton ish the

When some-one else feels the flame you al - ways knew was

#18. The Weekly Volcano Press

20

Jo

185 world! world! world! world! there!

186 world! world! world! world! there!

fff

LX 216
Watch Prof. Frei

Peak of applause/Actors moving on

LX 216.5

SHIFT 9

TEXAS Outdoor Musical

Texas Panhandle Heritage Foundation - 2024

Palo Duro Canyon State Park Pioneer Amphitheater

From Paul Green's "Texas: A Symphonic Outdoor Drama of American Life"

Additional Dialogue: Dave Yirak and Stephen Crandall

Comanche Language: Benny Tahmahkera

Director: Stephen Crandall

Assistant Director/Company Manager: Sean Evan Jones

Music Director: Cloyce Kuhnert

Conductor: Robert Cardwell

Choreographer: Kyla Olson

Production Stage Manager: Rachel Ledington

Assistant Stage Managers: Emma Firth & Darcy Golla

Scenic Designer: Angelo O'Dierno

Costume Designer: Leigh Anne Crandall

Lighting Designer: Fabian J. Garcia

Sound Designer: Chris Ransome

Production Manager: John Landon



Production Overview

3 Week Rehearsal Process | SL ASM Deck Track | Run of 48 Performances | 62 Performers
22 Crew Members | Live Animals | Large Scenic Units | Onstage Firearms | Pyro, Flame, and Water Effects

Photo Credit: Brianne Barger



TEXAS Outdoor Musical

WWW
6.26.24
V.4

Time	A.S.P	Performer	Role	Action	Location	Cue	Props	Costumes	Notes
SCENE 2: WORK									
0:11:30	II.2.41	E. Firth	SR ASM	TURN ON	SR	Top of Scene			TURN ON FIRE WAGON PROPANE
0:11:30	II. 2.41	B. Dawson	Tuck	ENT	SR to USC	Top of Scene	Saw + Saw Log	Tuck Work Tan Shirt Red Suspenders White Jeans	
0:11:30	II.2.41	A. Hoffman	Calvin	ENT	SR to USC	Top of Scene	Sledgehammer + Wedge	Calvin Picnic Brown w/ Tan Suspenders Gloves Black Jeans	
0:11:57	II.2.41	K. McMurry	Elsie	ENT	SR to USC	"... the water hole."			
0:13:13	II.2.42	B. Dawson	Tuck	EXT	USC to SL	"... my fiery innards."			
0:16:36	II.2.44	K. McMurry	Elsie	EXT	USC to SR	"... for everything."			
0:16:36	II.2.44	B. Dawson	Tuck	ENT	SL to USC	"... for everything."			
0:19:02	II.2.45	M. Fulwider	Elsie Rider	ENT	SR HR	Called by SM		Elsie Riding Jacket	On Horseback
0:19:22	II.2.45	M. Fulwider	Elsis Rider	EXT	SL HR				On Horseback
0:19:56	II.2.46	A. Hoffman	Calvin	EXT	SL	"... you're not!"	Tool Box		Change to Dream NEXT ENT 3:05
0:19:56	II.2.46	B. Dawson	Tuck	EXT	SL	"... you're not!"			
0:20:00	II.2.46	D. Golla	SL ASM	CATCH	SL	End of Scene	Tool Box		CATCH TOOL BOX
0:20:00	II.2.46	S. Scabora	Crew	STRIKE	SR	End of Scene			STRIKE WAGON
0:20:00	II.2.46	D. Scobee	Crew	STRIKE	SR	End of Scene			STRIKE WAGON
0:20:00	II.2.46	E. Firth	SR ASM	SET	SR	End of Scene			SET FIRE WAGON



TEXAS Outdoor Musical

WWW
6.26.24
V.4

Time	A.S.P	Performer	Role	Action	Location	Cue	Props	Costumes	Notes
0:20:00	II.2.46	L. Martin	Crew	SET	SR	End of Scene			SET FIRE WAGON
0:20:00	II.2.46	J. Suarez	Crew	SET	SR	End of Scene			SET FIRE WAGON
0:20:00	II.2.46	J. Nuckels	Deck Electrician	SWEEP	SR	End of Scene			SWEEP STAGE IF NEEDED
SILVER THREADS (Tag)									
0:20:10	II.2.46	B. Kuhnert	Uncle Henry	ENT	SSL	During Transition	Whiskey Bottle + Glass + Flask		
SCENE 3: DREAM									
0:20:23	II.3.46	E. Richards	Crew	ASSIST	SSL	Top of Scene			ASSIST BENNY UP TO ROOF
0:20:23	II.3.46	L. Martin	Crew	ASSIST	SSR	Top of Scene			ASSIST CALVIN UP TO ROOF *Costume Change*
0:20:48	II.3.46	R. Dawson	Kate	ENT	SL RH	"... a century or more."		Kate Dream Tan Blouse Blue Apron Green Skirt	
0:21:12	II.3.46	R. Dawson	Kate	EXT	SL RH	"... ready in a bit!"	Whiskey Bottle + Glass		
DREAM SEQUENCE									
0:21:41	II.3.46	K. Haley	Dancer	ENT	SSL	Top of Dream Sequence	Lantern	Dancer Black Stripe Dream w/ Red Bandana + Black Cowboy	
0:21:41	II.3.46	J. Phillips	Dancer	ENT	SL	Top of Dream Sequence	Lantern	Dancer Black Stripe Dream w/	



TEXAS Outdoor Musical

WWW
6.26.24
V.4

Time	A.S.P	Performer	Role	Action	Location	Cue	Props	Costumes	Notes
								Red Bandana + Black Cowboy	
0:21:41	II.3.46	G. Naman	Dancer	ENT	SL	Top of Dream Sequence	Lantern	Dancer Black Stripe Dream w/ Red Bandana + Black Cowboy	
0:21:41	II.3.46	J. Digney	Dancer	ENT	SL	Top of Dream Sequence	Lantern	Dancer Black Stripe Dream w/ Red Bandana + Black Cowboy	
0:21:41	II.3.46	B. Mahatekar	Dancer	ENT	SL	Top of Dream Sequence	Lantern	Dancer Black Stripe Dream w/ Red Bandana + Black Cowboy	
0:21:41	II.3.46	C. Martinez	Dancer	ENT	SR	Top of Dream Sequence	Lantern	Dancer Black Stripe Dream w/ Red Bandana + Black Cowboy	
0:21:41	II.3.46	L. Dickson	Dancer	ENT	SR	Top of Dream Sequence	Lantern	Dancer Black Stripe Dream w/ Red Bandana + Black Cowboy	
0:21:41	II.3.46	H. Salter	Dancer	ENT	SR	Top of Dream Sequence	Lantern	Dancer Black Stripe Dream w/ Red Bandana + Black Cowboy	
0:22:27	II.3.47	A. Hoffman	Calvin	ENT	SR Roof	"... tearing up my land!"		Calvin Dream Judge Robe	
0:23:52	II.3.47	B. Lazarus	Crew	FLIP	SR HR	Called by SM			FLIP UP CHURCH



TEXAS Outdoor Musical

WWW
6.26.24
V.4

Time	A.S.P	Performer	Role	Action	Location	Cue	Props	Costumes	Notes
0:23:52	II.3.47	T. Bacerra	Crew	FLIP	SR HR	Called by SM			FLIP UP CHURCH
0:24:00	II.3.47	D. Brundidge Jr.	Hymn Singer	ENT	SL SS	"sickness and pain"		WTR Green Stripe w/ Yellow Bandana	
0:24:00	II.3.47	E. Camarena	Hymn Singer	ENT	SL SS	"sickness and pain"		WTR Blue Stripe w/ Navy Bandana	
0:24:00	II.3.47	L. Levert	Hymn Singer	ENT	SL SS	"sickness and pain"		WTR Blue Dress w/ Bonnet Shawl	
0:24:00	II.3.47	J. Schonhoff	Hymn Singer	ENT	SL SS	"sickness and pain"		WTR Teal Dress w/ Bonnet Shawl	
0:24:00	II.3.47	W. Kielwasser	Hymn Singer	ENT	SR SS	"sickness and pain"		WTR Black Stripe w/ Red Bandana	
0:24:00	II.3.47	O. Hample	Hymn Singer	ENT	SR SS	"sickness and pain"		WTR Black Stripe w/ Red Bandana	
0:24:00	II.3.47	P. Hastings	Hymn Singer	ENT	SR SS	"sickness and pain"		WTR Purple Dress w/ Bonnet Shawl	
0:24:00	II.3.47	S. Estes	Hymn Singer	ENT	SR SS	"sickness and pain"		WTR Blue Dress w/ Bonnet Shawl	
0:24:07	II.3.47	K. Haley	Dancer	EXT	SL	"These too."	Lantern		
0:24:07	II.3.47	C. Martinez	Dancer	EXT	SL	"These too."	Lantern		



TEXAS Outdoor Musical

WWW
6.26.24
V.4

Time	A.S.P	Performer	Role	Action	Location	Cue	Props	Costumes	Notes
0:24:07	II.3.47	J. Digney	Dancer	EXT	SL	"These too."	Lantern		
0:24:07	II.3.47	G. Naman	Dancer	EXT	SL	"These too."	Lantern		
0:24:07	II.3.47	J. Phillips	Dancer	EXT	SR	"These too."	Lantern		
0:24:07	II.3.47	L. Dickson	Dancer	EXT	SR	"These too."	Lantern		
0:24:07	II.3.47	H. Salter	Dancer	EXT	SR	"These too."	Lantern		
0:24:07	II.3.47	B. Mahatekar	Dancer	EXT	SR	"These too."	Lantern		
FUNERAL HYMN									
0:24:11	II.3.48	R. Mosley	Funeral Procession	ENT	SR HR	Top of Section	Casket	WTR Navy Stripe w/ Red Bandana	
0:24:11	II.3.48	J. Moreno	Funeral Procession	ENT	SR HR	Top of Section	Casket	WTR Blue Stripe w/ Grey Bandana	
0:24:11	II.3.48	R. Barber	Funeral Procession	ENT	SR HR	Top of Section	Casket	WTR Burgandy Stripe w/ Red Bandana	
0:24:11	II.3.48	H. Kelley	Funeral Procession	ENT	SR HR	Top of Section	Casket	WTR Navy Stripe w/ Navy Bandana	
0:24:11	II.3.48	M. Baily	Funeral Procession	ENT	SR HR	Top of Section		WTR Purple Dress w/ Bonnet Shawl Boots	
0:24:11	II.3.48	M. Lantz	Funeral Procession	ENT	SR HR	Top of Section		WTR Navy Dress w/ Bonnet Shawl Boots	



TEXAS Outdoor Musical

WWW
6.26.24
V.4

Time	A.S.P	Performer	Role	Action	Location	Cue	Props	Costumes	Notes
0:24:11	II.3.48	G. Philipbar	Funeral Procession	ENT	SR HR	Top of Section		WTR Pink Dress w/ Bonnet Shawl Boots	
0:24:11	II.3.48	K. Tenorio	Funeral Procession	ENT	SR HR	Top of Section		WTR Teal Dress w/ Bonnet Shawl Boots	
0:25:25	II.3.48	D. Brundidge Jr.	Hymn Singer	EXT	SL SS	End of Section			
0:25:25	II.3.48	E. Camarena	Hymn Singer	EXT	SL SS	End of Section			
0:25:25	II.3.48	L. Levert	Hymn Singer	EXT	SL SS	End of Section			
0:25:25	II.3.48	J. Schonhoff	Hymn Singer	EXT	SL SS	End of Section			
0:25:25	II.3.48	R. Mosley	Funeral Procession	EXT	SL HR	End of Section	Casket		
0:25:25	II.3.48	J. Moreno	Funeral Procession	EXT	SL HR	End of Section	Casket		
0:25:25	II.3.48	R. Barber	Funeral Procession	EXT	SL HR	End of Section	Casket		
0:25:25	II.3.48	H. Kelley	Funeral Procession	EXT	SL HR	End of Section	Casket		
0:25:25	II.3.48	M. Baily	Funeral Procession	EXT	SL HR	End of Section			
0:25:25	II.3.48	M. Lantz	Funeral Procession	EXT	SL HR	End of Section			
0:25:25	II.3.48	G. Philipbar	Funeral Procession	EXT	SL HR	End of Section			



TEXAS Outdoor Musical

WWW
6.26.24
V.4

Time	A.S.P	Performer	Role	Action	Location	Cue	Props	Costumes	Notes
0:25:25	II.3.48	K. Tenorio	Funeral Procession	EXT	SL HR	End of Section			
0:25:25	II.3.48	W. Kielwasser	Hymn Singer	EXT	SR SS	End of Section			
0:25:25	II.3.48	O. Hample	Hymn Singer	EXT	SR SS	End of Section			
0:25:25	II.3.48	P. Hastings	Hymn Singer	EXT	SR SS	End of Section			
0:25:25	II.3.48	S. Estes	Hymn Singer	EXT	SR SS	End of Section			
FIRE BALLET									
0:25:25	II.3.48	K. Haley	Dancer	ENT	SL	"And the killing..."	Burlap Sack		
0:25:25	II.3.48	C. Martinez	Dancer	ENT	SL	"And the killing..."	Burlap Sack		
0:25:25	II.3.48	J. Digney	Dancer	ENT	SL	"And the killing..."	Burlap Sack		
0:25:25	II.3.48	G. Naman	Dancer	ENT	SL	"And the killing..."	Burlap Sack		
0:25:25	II.3.48	J. Phillips	Dancer	ENT	SR	"And the killing..."	Burlap Sack		
0:25:25	II.3.48	L. Dickson	Dancer	ENT	SR	"And the killing..."	Burlap Sack		
0:25:25	II.3.48	H. Salter	Dancer	ENT	SR	"And the killing..."	Burlap Sack		
0:25:25	II.3.48	B. Mahatekar	Dancer	ENT	SR	"And the killing..."	Burlap Sack		
0:25:30	II.3.48	T. Bacerra	Crew	STRIKE	SR HR	Called by SM			STRIKE CHURCH
0:25:30	II.3.48	B. Lazarus	Crew	STRIKE	SR HR	Called by SM			STRIKE CHURCH
0:25:30	II.3.48	E. Firth	SR ASM	DEAD MAN	USC	Called by SM			FIRE WAGON DEADMAN
0:25:30	II.3.48	C. Meliezer	Crew	FIRE WATCH	SL LR	Called by SM			ON FIRE WATCH
0:25:30	II.3.48	D. Scobee	Crew	FIRE WATCH	SR	Called by SM			ON FIRE WATCH
0:25:42	II.3.48	A. Cowen	Dancer	ENT	SL	"the prairie fire"		Fire Ballet	



TEXAS Outdoor Musical

WWW
6.26.24
V.4

Time	A.S.P	Performer	Role	Action	Location	Cue	Props	Costumes	Notes
								Red Leo w/ Headpiece Fire Tutu Red Tights + Ballet Shoes	
0:25:42	II.3.48	A. Acosta	Dancer	ENT	SL	“the prairie fire”		Fire Ballet Red Leo w/ Headpiece Fire Tutu Red Tights + Ballet Shoes	
0:25:42	II.3.48	A. Hakan	Dancer	ENT	SL	“the prairie fire”		Fire Ballet Red Leo w/ Headpiece Fire Tutu Red Tights + Ballet Shoes	
0:25:42	II.3.48	E. Herr	Dancer	ENT	SL	“the prairie fire”		Fire Ballet Red Leo w/ Headpiece Fire Tutu Red Tights + Ballet Shoes	
0:25:42	II.3.48	A. Teleki	Dancer	ENT	SR	“the prairie fire”		Fire Ballet Red Leo w/ Headpiece Fire Tutu Red Tights + Ballet Shoes	
0:25:42	II.3.48	A. Martin	Dancer	ENT	SR	“the prairie fire”		Fire Ballet	



TEXAS Outdoor Musical

WWW
6.26.24
V.4

Time	A.S.P	Performer	Role	Action	Location	Cue	Props	Costumes	Notes
								Red Leo w/ Headpiece Fire Tutu Red Tights Ballet Shoes	
0:25:42	II.3.48	A. Bruegeman	Dancer	ENT	SR	“the prairie fire”		Fire Ballet Red Leo w/ Headpiece Fire Tutu Red Tights Ballet Shoes	
0:25:42	II.3.48	A. Meredith	Dancer	ENT	SR	“the prairie fire”		Fire Ballet Red Leo w/ Headpiece Fire Tutu Red Tights + Ballet Shoes	
0:25:56	II.3.48	A. Burrus	Wrangler	ENT	SR HR	Fire Ballet			On Horseback
0:25:56	II.3.48	M. Fulwider	Wrangler	ENT	SR HR	Fire Ballet			On Horseback
0:27:54	II.3.48	A. Cowen	Dancer	EXT	USC to SR	End of Section			
0:27:54	II.3.48	A. Acosta	Dancer	EXT	USC to SR	End of Section			
0:27:54	II.3.48	A. Hakan	Dancer	EXT	USC to SR	End of Section			
0:27:54	II.3.48	E. Herr	Dancer	EXT	USC to SR	End of Section			
0:27:54	II.3.48	A. Teleki	Dancer	EXT	USC to SR	End of Section			
0:27:54	II.3.48	A. Martin	Dancer	EXT	USC to SR	End of Section			
0:27:54	II.3.48	A. Bruegeman	Dancer	EXT	USC to SR	End of Section			
0:27:54	II.3.48	A. Meredith	Dancer	EXT	USC to SR	End of Section			



TEXAS Outdoor Musical

WWW
6.26.24
V.4

Time	A.S.P	Performer	Role	Action	Location	Cue	Props	Costumes	Notes
0:27:58	II.3.48	A. Burrus	Wrangler	EXT	SR HR	Fire Ballet			On Horseback
0:27:58	II.3.48	M. Fulwider	Wrangler	EXT	SR HR	Fire Ballet			On Horseback
RAILROAD									
0:28:06	II.3.48	K. Haley	Dancer	EXT	USC to SR	"In spite of all..."	Burlap Sack		
0:28:06	II.3.48	C. Martinez	Dancer	EXT	USC to SR	"In spite of all..."	Burlap Sack		
0:28:06	II.3.48	J. Digney	Dancer	EXT	USC to SR	"In spite of all..."	Burlap Sack		
0:28:06	II.3.48	G. Naman	Dancer	EXT	USC to SR	"In spite of all..."	Burlap Sack		
0:28:06	II.3.48	J. Phillips	Dancer	EXT	USC to SR	"In spite of all..."	Burlap Sack		
0:28:06	II.3.48	L. Dickson	Dancer	EXT	USC to SR	"In spite of all..."	Burlap Sack		
0:28:06	II.3.48	H. Salter	Dancer	EXT	USC to SR	"In spite of all..."	Burlap Sack		
0:28:06	II.3.48	B. Mahatekar	Dancer	EXT	USC to SR	"In spite of all..."	Burlap Sack		
0:28:14	II.3.47	A. Hoffman	Calvin	EXT	SR Roof	"... coming!"			
0:28:14	II.3.49	D. Golla	SL ASM	PULL	SL LR	Called By SM			PULL UP TRAIN LIGHT
After DREAM SEQUENCE									
0:28:40	II.3.49	E. Leighton	Aunt Anna	ENT	SSL RH	"Stop it, stop it!"		Anna Dream Green Dress	
0:28:48	II.3.49	E. Richards	Crew	SET	SL	Called by SM			SET WASH CART
0:28:48	II.3.49	E. Firth	SR ASM	STRIKE	SR	Called by SM			STRIKE FIRE WAGON
0:28:48	II.3.49	L. Martin	Crew	STRIKE	SR	Called by SM			STRIKE FIRE WAGON
0:28:48	II.3.49	J. Suarez	Crew	STRIKE	SR	Called by SM			STRIKE FIRE WAGON
0:28:48	II.3.49	E. Firth	SR ASM	TURN OFF	SR	Called by SM			TURN OFF PROPANE
0:28:48	II.3.49	R. Dawson	Kate	ENT	SL	w/ Wash Cart			

Welcome Wanders

Texas Panhandle Heritage Foundation - 2024

Palo Duro Canyon State Park Pioneer Amphitheater

Green Show for Shakespeare in the Canyon
Music, Lyrics, and Book: Bradley J. Behrmann

Artistic Director: Stephen Crandall
Director: Bradley J. Behrmann

Stage Manager: Darcy Golla

Audio Engineers: Sierra Ochoa & Leigh Womack

Production Manager: John Landon



Production Overview

World Premiere | 25-minute Musical | 1 Week Rehearsal Process | Untraditional Performance Space
Run of 4 Performances | 17 Cast Members | 5 Musicians | Ran Brush-Up Rehearsals as Needed

Photo Credit: Brianne Barger

Vocals

#1 Light Yer Fires

from WELCOME WANDERERS

Music & Lyrics:
bjb

2.

Jolly WAXWING:

BQBCAT: Light yer fires and wel-come in! We know yer kids are wra-stl-n'...

Light yer fires and wel-come in! We know yer folks are might-y tired. We'll

Light yer fires and wel-come in!

Light yer fires and wel-come in!

Light yer fires and wel-come in!

Gath - er 'round and hud - dle tight! Here's a

sing to - night 'til the flames ex - pir'd. So Gath - er 'round and hud - dle tight!

Gath - er 'round and hud - dle tight!

Gath - er 'round and hud - dle tight!

mid - dling stor - y... on a sum - mer's night. Light yer fires and wel - come in!

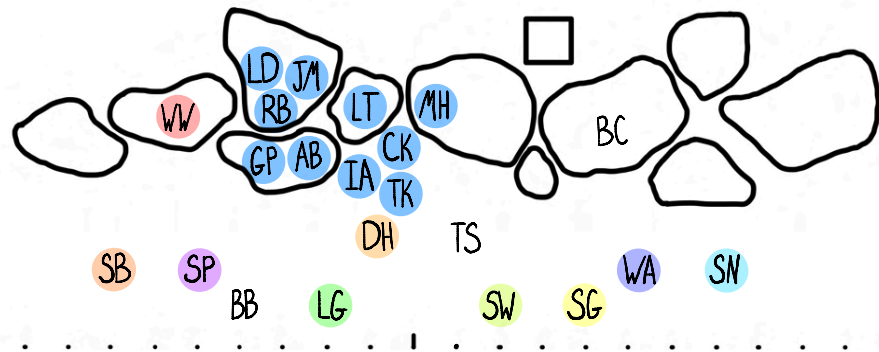
Woo! Light yer fires and wel - come in! We

Light yer fires and wel - come in!

Light yer fires and wel - come in!

Prepared by Bradley J. Behrmann - bradleyjco

TOS SEQUENCE - Cast & Band in Preset, SM check-ins w/ Sound, SM gives Bradley (BC) @ SL the go ahead to start, then Bradley gives Peyton (WW) a thumbs up, Peyton gives the Band a thumbs up to start #1

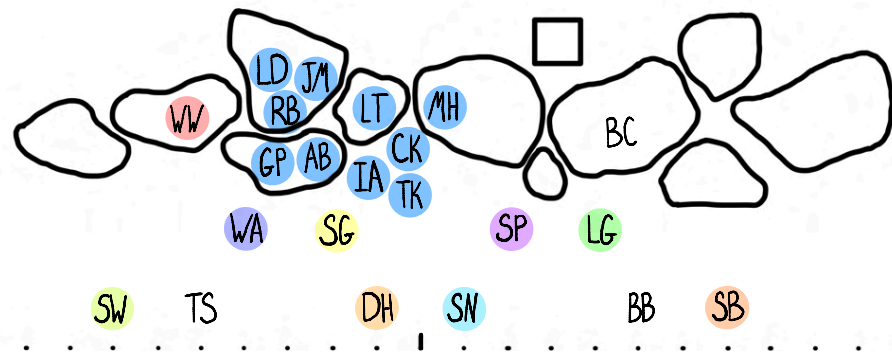


2. Band preset on/near Rocks 3, 4, 5 for TOS

4. WW ENT SR x to Rock 2, BC ENT SL x to Rock 7, All others ENT from various locations around the courtyard

6. WW standing on Rock 2, BC standing on Rock 7, SB @ [SR 14], SP @ [SR 12], BB @ [SR 8], LG @ [SR 4], DH @ [SR 2], TS @ [SL 2], SW @ [SL 4], SG & [SL 8], WA @ [SL 10], SN @ [SL 14]

8. SB, SP, BB, LG, DH, TS, SW, SG, WA, SN x to new spots



10. SW @ [SR 14], TS @ [SR 10], WA @ [SR 8], SG @ [SR 4], DH @ [SR 4], SN @ [SL 2], SP @ [SL 4], LG @ [SL 8], BB @ [SL 10], SB @ [SL 14]

14 15 16

We know that there's a wed-ding, cuz, ___ for 'Pol-y - ta ___ and The - se - us. And

know yer sup-per's set - tl - n'.

17 18 19 20 6.

while that show is com - in' soon

We'll have some fun out here... be - neath the moon. Join

2 3 4! Join

While that show is... Join

...is com'in' soon Join

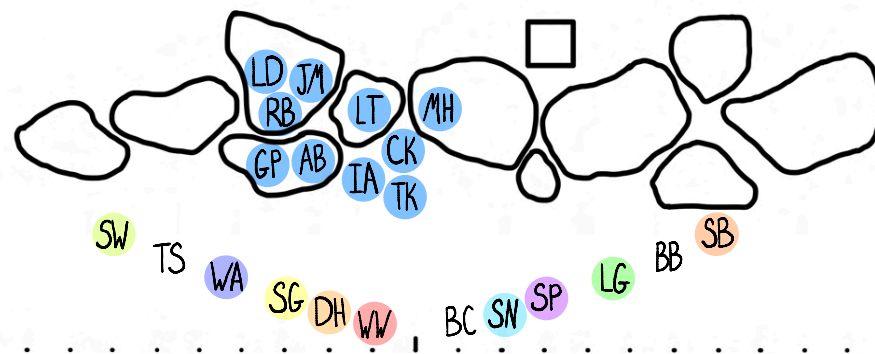
27 22 23 24

in our fair-y cir-cle and we'll cir-cle 'round our band. We'll band our friends to-geth-er and to - geth-er we ___ will stand. We'll

in our fair-y cir-cle and we'll cir-cle 'round our band. We'll band our friends to-geth-er and to - geth-er we ___ will stand. We'll

in our fair-y cir-cle and we'll cir-cle 'round our band. We'll band our friends to-geth-er and to - geth-er we ___ will stand. We'll

in our fair-y cir-cle and we'll cir-cle 'round our band. We'll band our friends to-geth-er and to - geth-er we ___ will stand. We'll



2. SB, SP, BB, LG, DH, TS, SW, SG, WA, SN x to new spots

4. WW + BC jump off rocks x DCS

6. All in arc - SW @ [SR 14], TS @ [SR 12], WA @ [SR 9], SG @ [SR 6], DH @ [SR 4], WW @ [SR 2], BC @ [SL 2], SN @ [SL 4], SP @ [SL 6], LG @ [SL 9], BB @ [SL 12], SB @ [SL 14]

#1 Light Yer Fires **2.**

stand un - der this sum-mer sky, and sky's the lim-it too! One, two, three, four, five, six, and sev-en, eight, nine,
stand un - der this sum-mer sky, and sky's the lim-it too! One, two, three, four, five, six, and sev-en, eight, nine,
stand un - der this sum-mer sky, and sky's the lim-it too! One, two, three, four, five, six, and sev-en, eight, nine,
stand un - der this sum-mer sky, and sky's the lim-it too! One, two, three, four, five, six, and sev-en, eight, nine,

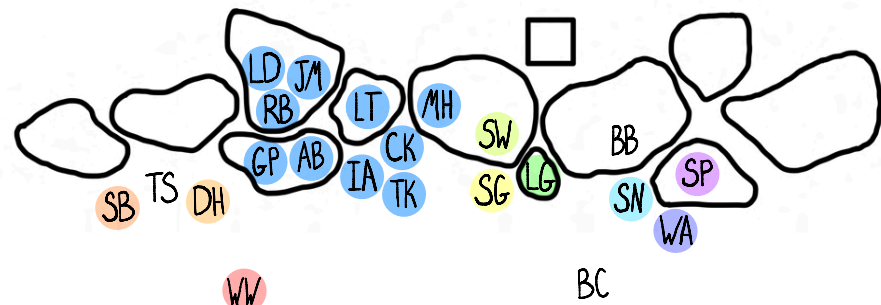
4.

ten, e-lev-en twelve and YOU will do.
ten, e-lev-en twelve and YOU will do.

6.
SNAKE, DUST, TICK:
ten, e-lev-en twelve and YOU will do. We wan-der'd through this can-yon here
SHORT, LONG, STUM:
ten, e-lev-en twelve and YOU will do. from

8.

Our fair-ly far - off fair-y fam__ says "How - dy, pal!" and "Eve - nin', ma'am!" We're
Our fair-ly far - off fair-y fam__ says "How - dy, pal!" and "Eve - nin', ma'am!"
SOD, SNEEZE, BLUE, WIND: **ALTO/BAND:**
and prai-rie near. **SOP/TEN:** "Eve - nin', ma'am!"
for-cst far "How - dy, pal!"



2. All jump on assigned number. One - SW, Two - TS, Three - WA, Four - SG, Five - DH, Six - WW, Seven - BC, Eight - SN, Nine - SP, Ten - LG, Eleven - BB, Twelve - SB

4. All x to new spots

6. SB @ [SR 14], TS @ [SR 12], DH @ [SR 12], WW kneeling @ [SR 8], BC x to [SL 8], SW standing on Rock 6, SG near Rock 6, LG standing on Rock 6A, BC kneeling @ [SL 8], BB standing on Rock 7, SN near Rock 7, SP standing on Rock 8, WA near Rock 8

8. WW + BC stand up

35 36 37 2. HEMP: 38

here to sing a song for you—

(2 1 2 3) Join BOBCAT/TEN:

and tell a tex-as tale... or may-be two. Join

ALTO: Join

39 40 41 4.

in our fair - y cir - cle and we'll cir-cle 'round our band. We'll band our friends to - geth-er and to -

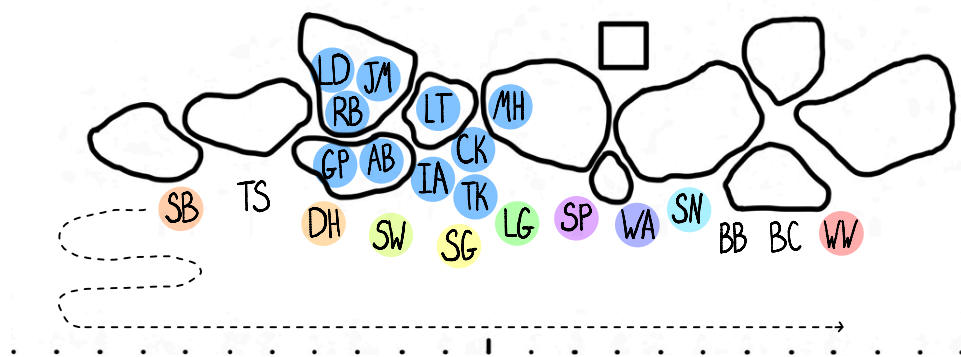
in our fair - y cir - cle and we'll cir-cle 'round our band. We'll band our friends to - geth-er and to -

SOLO:

in our fair - y cir - cle and we'll cir-cle 'round our band. We'll band our friends to - geth-er and to -

Lai do dai do Lai dai dee ____ La do Lai Lai dee do dee do dee

ad lib.
syllables



2. All x to US in front of Rocks

4. All follow SB in line to DS

#1 Light Yer Fires

5

42. 2. 43. 44. 4.

geth-er we ___ will stand. We'll stand un - der this sum-mer sky, and sky's the lim-it too! One, two, three,

geth-er we ___ will stand. We'll stand un - der this sum-mer sky, and sky's the lim-it too! One, two, three,

geth-er we ___ will stand. We'll stand un - der this sum-mer sky, and sky's the lim-it too! One, two, ___

dai Lai do dee Lai do lai do Lai do dee ___ dai

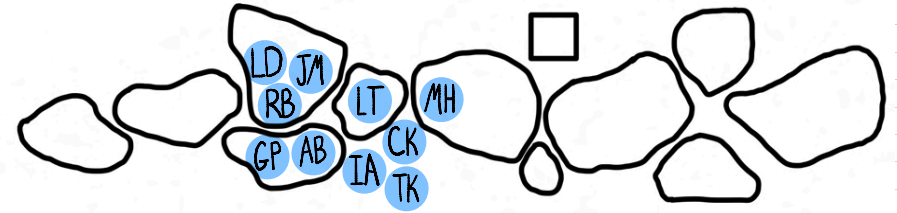
45. 46. 47.

four, five, six, and sev - en, eight, nine, ten, e - lev - en twelve and YOU will do. We'll

four, five, six, and sev - en, eight, nine, ten, e - lev - en twelve and YOU will do. We'll

four, five, six, and sev - en, eight, nine, ten, e - lev - en twelve and YOU will do. We'll

Lai Do Lai We'll



WW BC BB SN WA SP LG SW SG DH TS SB

2. WW @ [SR 16], BC @ [SR 14], BB @ [SR 11], SN @ [SR 8], WA @ [SR 6], SP @ [SR 2], LG @ [SL 2], SW @ [SL 6], SG @ [SL 8], DH @ [11], TS @ [SL 14], SB @ [SL 16]

4. All pose on assigned number. One - SW, Two - TS, Three - WA, Four - SG, Five - DH, Six - WW, Seven - BC, Eight - SN, Nine - SP, Ten - LG, Eleven - BB, Twelve - SB

48 **+WAXWING/SOP:** stand un - der this sum-mer sky, — With paint - ed gold - en hue, With streaks of pink and blue, With

BOBCAT: stand un - der this sum-mer sky, — With paint - ed gold - en hue, With streaks of pink and blue, With

ALTO: stand un - der this sum-mer sky, — With paint - ed gold - en hue, With streaks of pink and blue, With

TEN: stand un - der this sum-mer sky, — With paint - ed gold - en hue, With streaks of pink and blue, With

51 **2.** man - y friends or few, One, two, three, four, five, six, and sev-en, eight, nine, ten, e-lev-en twelve and you and you,

man - y friends or few, One, two, three, four, five, six, and sev-en, eight, nine, ten, e-lev-en twelve

man - y friends or few, One, two, three, four, five, six, and sev-en, eight, nine, ten, e-lev-en twelve

man - y friends or few, One, two, three, four, five, six, and sev-en, eight, nine, ten, e-lev-en twelve

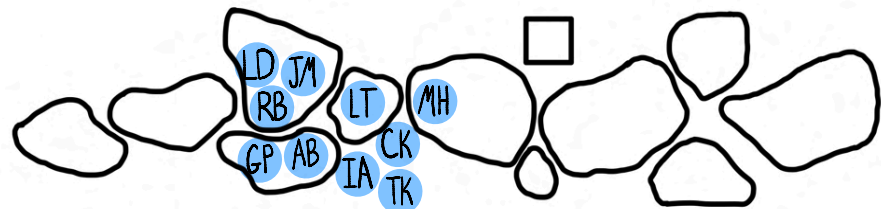
54 and you and you and you and you and you will do!

and you and you, and you and you will do!

and you and you and you and you and you will do!

and you and you, and you and you will do!

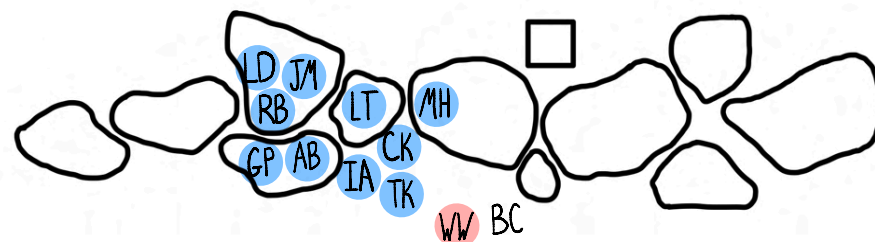
55 56 **4.** 57



WW BC BB SN WA SP LG SW SG DH TS SB

2. All jump on assigned number. One - SW, Two - TS, Three - WA, Four - SG, Five - DH, Six - WW, Seven - BC, Eight - SN, Nine - SP, Ten - LG, Eleven - BB, Twelve - SB

4. All pose on button



[The FAIRIES, quite pleased with themselves, assemble for roll call.]

2. Is our company all here?

WAXWING

4. 'Tis almost Fairy time!

BOBCAT

WAXWING
Let's hear where you've all been on this [swelterin'] [July] day.

#IA LIGHT YER GUITARS

[The guitarists of the BAND punctate the FAIRIES' ROLL CALL and underscore the scene.]

Snakebite! **BOBCAT**

Present! 6. **SNAKEBITE**

BOBCAT
Dustheap!

DUSTHEAP 8. PRE-zent!

2. WW + BC x USC

4. All others sit on ground

6. SB stands up

8. DH stands up

BOBCAT

Tickseed!

TICKSEED

2. Présenté!

WAXWING

Where have you wandered?

SNAKEBITE

We whiled the day over every inch of the trails.

DUSTHEAP

And clapped clouds of red dirt over all the hikers' boots!

TICKSEED

Their feet were filthy when we were through with 'em!

SNAKEBITE

But the best part of all—

TICKSEED

Oh yes!

DUSTHEAP

—was discovering a rattlesnake and a skunk just below the Lighthouse head-to-head in a boxing match. [TICKSEED and SNAKEBITE engage in mock-boxing match.]

BOBCAT

Who won?

SNAKEBITE

They're still going!

DUSTHEAP

The skunk fights dirty—

TICKSEED

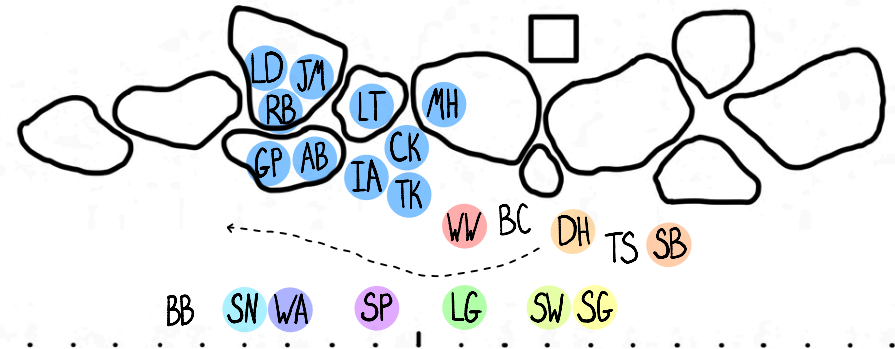
—but the snake is a slippery one.

WAXWING

[intrigued] Should we place our bets?

BOBCAT

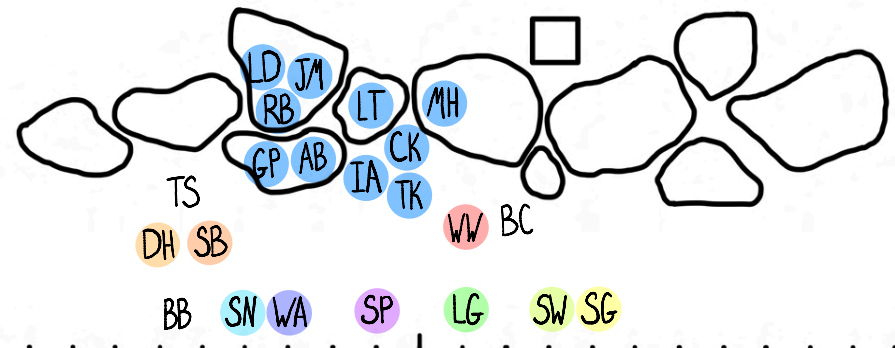
What are the odds the rattlesnake will beat the skunk?



2. TS stands up

4. SB, DH, + TS x US

6. SB, DH, + TS x SR, playing with the others boots



8. TS + SB in a boxing match

2.

SNAKEBITE, DUSTHEAP, TICKSEED

They stink!

*[The FAIRIES are delighted with their own joke.]***#IB LIGHT YER VIOLINS***[The violinist of the BAND punctate the FAIRIES' ROLL CALL and underscore the scene.]*

Longgrass!

BOBCAT

4.

LONGGRASS

Here!

BOBCAT

Shortgrass!

SHORTGRASS

Hiiii!

6.

BOBCAT

Stumbleweed!

STUMBLEWEED

Yo.

8.

WAXWING

Hi, Plains.

10.

SHORTGRASS

Hi, Fairy.

12.

STUMBLEWEED

What's up?

WAXWING

You tell me.

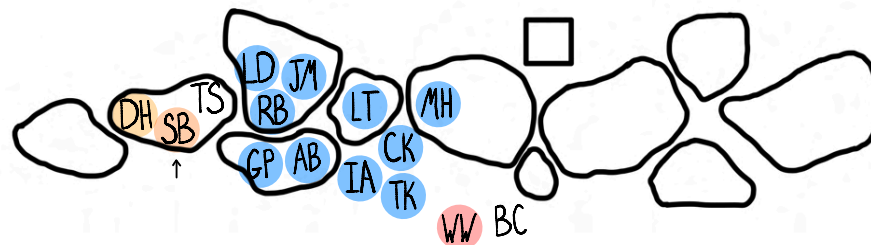
14.

LONGGRASS

We sped upon the music of the wind over the whole Panhandle today—

SHORTGRASS

—as fast as we could on our ATVs.

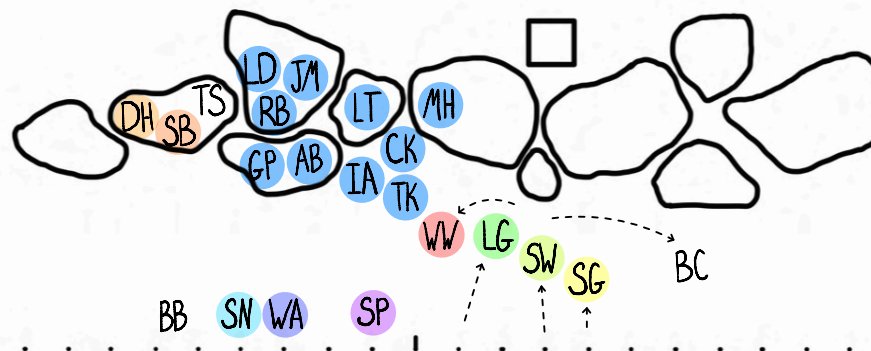


2. DH, SB + TS x to Rock 2, sits on rock

4. LG stands up

6. SG stands up

8. SW stands up



10. WW x SR

12. LG, SW, + SG x US

14. BC x DSL

All Terrain Violins. **2.** **STUMBLEWEED**

LONGGRASS

And as we veered back to the Canyon—

4. **SHORTGRASS**

—we saw horsists on tourback!

LONGGRASS

We saw tourists on horseback.

SHORTGRASS

And just past the headtrail—

LONGGRASS

—trailhead—

SHORTGRASS

—we saw a hamper—

LONGGRASS

—glamper—

SHORTGRASS

—so terrified to be on a horse that she clutched that mane as if she was trying to give the pony pigtails. [SHORTGRASS demonstrates with a horrorstruck face.] **6.**

WAXWING

Did the horse handle that well?

8. **STUMBLEWEED**

Neeeiigh.

10. **BOBCAT**

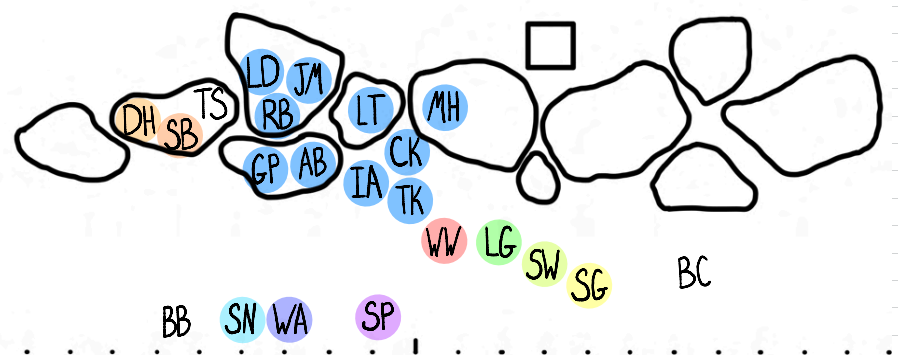
And the rest of our windswept wanderers? Sodpoodle!

#I C LIGHT YER BASS

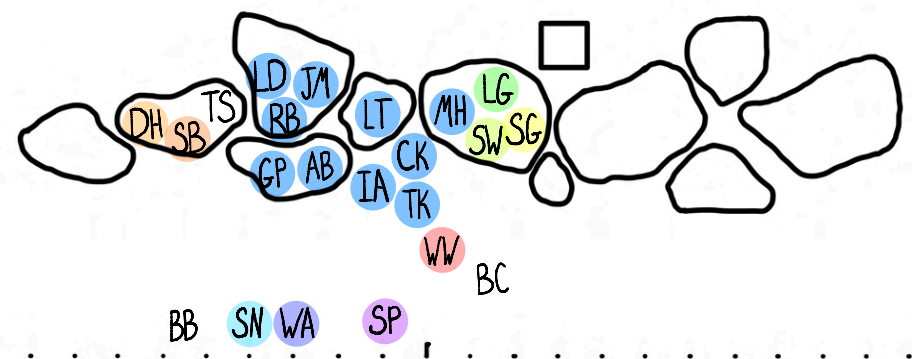
[The bassist of the BAND punctate the FAIRIES' ROLL CALL and underscore the scene.]

12. **SODPOODLE**

Yessir!



- 2. LG, SG + SW ride ATVs
- 4. LG, SG + SW pose as tourists
- 6. LG, SG + SW pose as pony with pigtails



- 8. SW, LG + SG x to Rock 5, sits on rock
- 10. BC x SR
- 12. SP stands up

Sneezeblossom! 2.

BOBCAT

SNEEZEBLOSSOM

Right here!

Bluebonnet! 4. **BOBCAT**

BLUEBONNET

Hey y'all!

BOBCAT
Windalong!

WINDALONG
Yeow! 6.

8.

WAXWING

Sodpoodle, what about your adventures?

SODPOODLE

You mean "venture"!

WAXWING

Oh?

SODPOODLE

Yes, Waxwing, I worked all day on my business venture—the Happy Monkey Mercantile.

WAXWING

Don't you mean "Sad Monkey"?

WINDALONG

No, Sodpoodle opened a competitor.

SODPOODLE

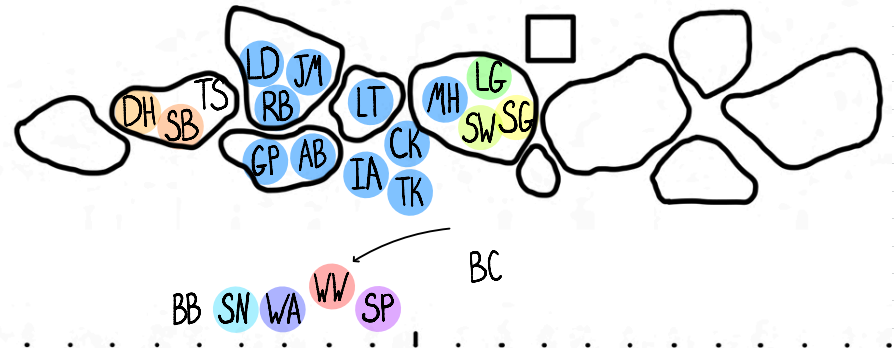
We only sell monkeys. Happily.

WINDALONG

Your business model...

SODPOODLE

Yes?



2. SN stands up

4. BB stands up

6. WA stands up

8. WW x to SR of SP

WINDALONG

...is bananas.

BLUEBONNET

But we saw the most remarkable sight just now. 2.

SNEEZE Blossom

My cheeks still hurt from giggling!

BLUEBONNET

We discovered sweet and sprightly Puck doubled over behind a cactus blossom.

4.

BOBCAT

It doesn't take much to get that Robin Goodfellow laughing.

WAXWING

Especially at someone else's expense. 6.

SNEEZE Blossom

The laugh was expensive, but the someone else was poor: a ragtag bunch of rustics had set up camp and then set up rehearsal.

8.

TICKSEED

Rustics, you say?

#ID LIGHT YER RUSTICS

[The BAND punctates the MECHANICALS' occupations.]

SNEEZE Blossom

Yes, there was a carpenter and a weaver... 10.

BLUEBONNET

...and a tinker and a tailor. 12.

SNEEZE Blossom

...and that grouchy car repairman.

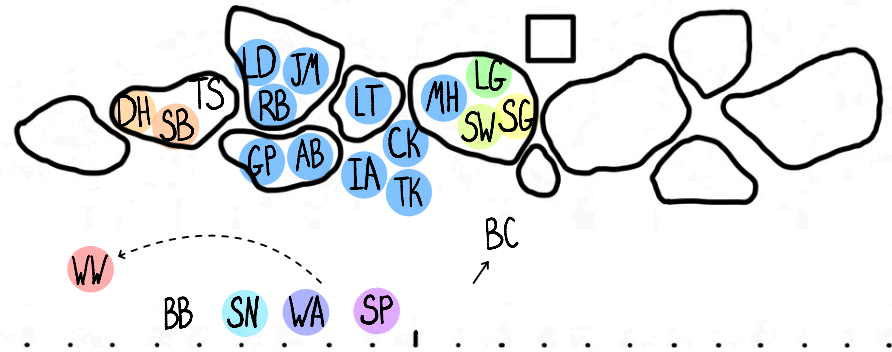
BLUEBONNET

Oh, he was a rude mechanical.

14.

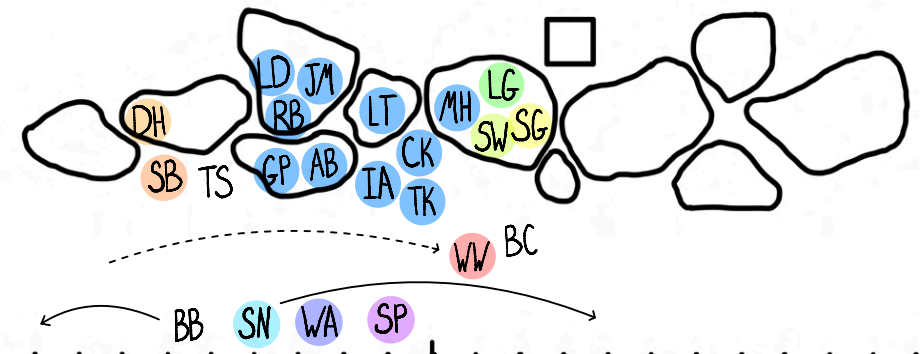
SNAKEBITE

Rehearsal? For what?



2. WW x SR

4. BC x USL



6. WW x to SL of BC

8. TS stands up off of Rock 2

10. SN runs SL

12. BB runs SR

14. SB stands up off of Rock 2

A Midsummer Night's Dream

Texas Panhandle Heritage Foundation - 2024

Palo Duro Canyon State Park Pioneer Amphitheater

Playwright: William Shakespeare

Folger Shakespeare Library

Director: Royal R. Brantley

Assistant Director/Company Manager: Sean Evan Jones

Choreographer: Alexa Teleki

Production Stage Manager: Rachel Ledington

Assistant Stage Managers: Emma Firth & Darcy Golla

Scenic Designer: Justin Radcliffe

Costume Designer: Meagan Woodard

Lighting Designer: Justin Ashley

Sound Designer/Composer: Christian Howard

Production Manager: John Landon



Production Overview

4 Week Rehearsal Process | Run of 4 Performances | 22 Cast Members | 13 Crew Members

Ran in Repertory with TEXAS Outdoor Musical

Photo Credit: Brianne Barger

Actor	Character	A.S.P	Line #	Note	Line Missed
B. Dawson	Theseus	I.1.1	13	Added	Stir up the Athenian youth to merriments.
B. Dawson	Theseus	I.1.1	14	Sequence	Awake the pert and nimble spirit of mirth.
O. Hample	Egeus	I.1.2	35	Punctuation	Knacks, trifles, nosegays, sweetmeats—messengers
O. Hample	Egeus	I.1.2	39	Called Line	To stubborn harshness.—And, my gracious duke
O. Hample	Egeus	I.1.3	97	Dropped	Scornful Lysander, true, he hath my love;
A. Hoffman	Lysander	I.1.3	108	Called Line	Demetrius, I'll avouch it to his head,
B. Dawson	Theseus	I.1.3	121	Dropped	Or else the law of Athens yields you up
A. Hoffman	Lysander	I.1.4	134	Paraphrased	Ay me! For aught that I could ever read,
N. Taylor	Hermia	I.1.4	138 - 139	Dropped	O cross! Too high to be enthralled to low. O hell, to choose love by another's eyes!
A. Hoffman	Lysander	I.1.4	143 - 146	Dropped	Or, if there were a sympathy in choice, War, death, or sickness did lay siege to it, Making it momentary as a sound, Swift as a shadow, short as any dream.
A. Hoffman	Lysander	I.1.4	158	Called Line	A good persuasion. Therefore, hear me, Hermia:
A. Hoffman	Lysander	I.1.4	170	Paraphrased	There will I stay for thee.
K. McMurry	Helena	I.1.5	233	Paraphrased	Through Athens I am thought as fair as she.
L. Allen	Bottom	I.2.6	10	Paraphrased	grow to a point.
L. Allen	Bottom	I.2.6	18 - 19	Added	Ready. Name what part I am for, and proceed.
L. Allen	Bottom	I.2.7	26 - 27	Paraphrased	measure. To the rest.—Yet my chief humor is for a tyrant. I could play Ercles rarely, or a part to tear a
L. Allen	Bottom	I.2.7	52	Paraphrased	dear and lady dear!"
O. Hample	Snug	I.2.7	64	Added	Have you the lion's part written? Pray you, if it
O. Hample	Snug	I.2.7	65	Paraphrased	be, give it me, for I am slow of study.
E. Camerena	Quince	I.2.8	73 - 74	Paraphrased	fright the Duchess and the ladies that they would shriek, and that were enough to hang us all.
L. Allen	Bottom	I.2.8	75	Jumped	ALL: That would hang us, every mother's son.
E. Camerena	Quince	I.2.8	100	Dropped	be dogged with company and our devices known. In
R. Dawson	Titania	II.1.10	73	Dropped	Your buskined mistress and your warrior love,
R. Dawson	Titania	II.1.10	89 - 90	Punctuation	To dance our ringlets to the whistling wind, But with thy brawls thou hast disturbed our sport.
R. Dawson	Titania	II.1.10	117	Paraphrased	By their increase now knows not which is which.
B. Dawson	Oberon	II.1.11	179	Paraphrased	Fetch me this herb, and be thou here again
K. McMurry	Helena	II.1.12	196	Jumped	DEMETRIUS: Where is Lysander and fair Hermia?

Ada and the Engine

Oklahoma State University - 2024

Jerry Davis Studio Theatre

Playwright: Lauren Gunderson

Original Music: The Kilbanes

Director: Joan Korte

Assistant Director: Savannah Harrod

Intimacy Director: Matt Smith

Music Preparation: Eric David Frei

Dance Coach: Chole Felts

Stage Manager: Darcy Golla

Assistant Stage Manager: Joy Sawyer

Scenic Designer: Eric Barker

Costume Designer: Jason Estala

Lighting Designer: Clara Starkwell

Sound Designer: Harley Roché

Production Manager: Marley Giggey

Technical Director: Leslie Currell



Production Overview

6 Week Rehearsal Process | Run of 7 Performances | 6 Cast Members | 7 Crew Members
Called Show from 2 Video Monitors and Audio Feed in a Location Separate from Theatre Space

Photo Credit: Garrett Kirksey



Ada and the Engine

Production Analysis

Version II
1/8/2024
DRG

A.S.P	Character	Scenic	Properties	Lighting	Costumes	Sound	Notes
II.1.50	Ada goes to leave but falters...						
II.1.52	Ada breathless, leans on something.						
II.1.52	Ada in pain, Charles steps to her. Ada waves him off.						
II.1.53	Babbage pulls Ada into a hug.						
II.1.53	Babbage whispers something to her. Ada is speechless, exhausted, vulnerable.						
II.1.53	Babbage and Ada sit together.						
II.2.55	A letter from Babbage takes over.						
II.2.55	Lovelace appears.						
II.2.56	Ada is grabbed by Annabella from Babbage.						
II.2.56	Lovelace helps Ada across the room and administers her Laudanum.		Laudanum Glass of Water				
II.2.56	Babbage confronts Annabella.	Door to Ada's room.					
II.2.57	Lovelace joins Lady Byron.						
II.2.57	Babbage leaves.						



DEPARTMENT OF
THEATRE
College of Arts and Sciences

Ada and the Engine

Production Analysis

Version II
1/8/2024
DRG

A.S.P	Character	Scenic	Properties	Lighting	Costumes	Sound	Notes
II.2.57	Ada, Annabella, and Lovelace in the room. Ada is high and delirious, lying on the couch.	Couch					
II.2.59	Babbage offstage, banging on the front door.					Banging on the front door	
II.2.59						More knocking from outside	
II.2.60	Ada reveals the pieced back together book of her father's poems		Pieced back together book of poems				
II.2.60	Charles knocks on the interior door.					Knock on door	
II.2.60	Babbage enters as Lovelace exits.						
II.2.60	Lovelace exits with a slam.					Door slam	
II.2.60	Annabella leaves.						
II.2.61	Ada tries to get up.						
II.2.61	Babbage helps Ada lie back down.						
II.2.62	Ada kisses Babbage on the cheek.						
II.2.62	Babbage picks up her father's book, he cannot hear Ada now.						



DEPARTMENT OF
THEATRE
College of Arts and Sciences

Ada and the Engine

Production Analysis

Version II
1/8/2024
DRG

A.S.P	Character	Scenic	Properties	Lighting	Costumes	Sound	Notes
II.2.62	Ada gradually turns back into herself.						
II.2.62	Ada is fully herself again. Babbage cannot see or hear her.						
II.2.63	Ada standing with more energy.						
II.2.63	Babbage sees her lying down not moving...						
II.2.63	To Babbage Ada is gone.						
II.2.64	Ada realizes she is gone.						
II.2.64	The world around the changes, fades away.			Light, prisms flicker around			
II.2.64		The crystal Place					
II.2.64	Bryon enters.						
II.2.68	Ada weeps. Bryon holds her.						
II.2.69	Bryon hugs Ada.						
II.2.69	Ada holds Bryon not letting go.						
II.2.70						The space chimes on note	
II.2.71						The note silences	
II.2.71						Another note	
II.2.71						The note silences	

OSU Theatre
Director: Joan Korte

darcy.golla@okstate.edu
Page 8 of 9

Spring 2024
SM: Darcy Golla



Ada and the Engine

Production Analysis

Version II
1/8/2024
DRG

A.S.P	Character	Scenic	Properties	Lighting	Costumes	Sound	Notes
II.2.71						Another note	
II.2.71						No note	
II.2.72	The engine starts up around them – music and machinery.						
II.2.73	Babbage can see Ada again in this dream.						
II.2.74	Bryon touches Ada goodbye.						
II.2.75	Babbage says goodbye to Ada.						
II.2.76	Ada is alone.					Her ones and zeros now echoing all around her	
II.2.76				The song and numbers funnel down into a spotlight on her			
II.2.76				Spotlight fades to a strange blue light		Song fades	
II.2.76				Blackout			



DEPARTMENT OF
THEATRE
College of Arts and Sciences

Ada and the Engine

Rehearsal Report

#3
Version I
1/17/2024
DRG

Wednesday, January 17th, 2024

Rehearsal Start:	6:30pm	Rehearsal End:	9:25pm
Elapsed Time:	2 hours 55 minutes	Location:	Davis Studio
Breaks:	7:50pm (10 minutes)		
Report Written By:	Darcy Golla		
Davis Secured:	10:00pm by stage management		

Attendance	
Cast:	Katigan Barksdale, Mia Roberti, Kat Wardell, Carlie Wilson, Mason Zweiacker
Tardy:	none
Absent:	none
Production Team:	Joan Korte, Savannah Harrod, Darcy Golla, Joy Sawyer
Guests:	none

Rehearsal Breakdown 1/17/2024	
Time	Rehearsal Info
6:30pm	Worked Section 1 – Script Pages: 9 - 14
7:02pm	Worked Section 2, Transition 1 – Script Pages: 14 - 20
7:30pm	Worked Section 3, Transition 2 – Script Pages: 21 - 24
7:50pm	Break
8:00pm	Worked Transition 2, Section 4, Transition 3, Section 5 – Script Pages: 25 - 41
9:30pm	End of Day

Next Rehearsal 1/18/2024	
Time	Rehearsal Info
6:30pm	Transition 4
7:30pm	Transition 5, Section 8
8:30pm	Section 6, Section 7, Section 9
9:30pm	End of Day



DEPARTMENT OF
THEATRE
College of Arts and Sciences

Ada and the Engine

Rehearsal Report

#3
Version I
1/17/2024
DRG

Notes: *PLEASE READ ENTIRE SECTION AS NOTES MAY APPLY TO MULTIPLE AREAS*

General Notes:

No notes, thank you.

Scenic:

No notes, thank you.

Properties:

1. Please ADD a Slim Book of Poems for Ada. It will need to have pages ripped out of it.
2. Please ADD a Pencil without an Eraser, Papers, and a Math Text for Ada.
3. Please ADD three cushions for Ada to sit on
4. Please ADD a Silver Tray with Champagne Glasses.
5. Please ADD a Punch Card for Babbage.
6. Please ADD a Small Bouquet for Annabella.
7. Please ADD a Compass for Babbage.
8. Please ADD Something Hard for Babbage to write on (Ask Joan).

Costumes:

1. Would it be possible for Ada to sit on the floor in her dress?
2. We will need jewels for Ada to wear in Scene 1.
3. We will need something for Annabella to add to her costume to show she is ready to go out for the evening in Scene 1. Possibly jewels, gloves, or a stole.
4. We will need something to represent a veil for Ada to wear during the wedding section.
5. We would like for Lovelace to have a Wedding Ring to give to Ada for the wedding section.

Lighting:

No notes, thank you.

Sound:

No notes, thank you.

Director:

No notes, thank you.

Stage Management:

No notes, thank you.

Facilities:

No notes, thank you.

Thank you!
Darcy Golla, SM



DEPARTMENT OF
THEATRE
College of Arts and Sciences

Ada and the Engine

Preliminary Prop List

Version I
2/1/2024
DRG

A.S.P	Prop	Character	Notes
I.1.9	Book of Poems	Ada	40 – 60 pages, it will need to have the pages ripped out of it each performance.
I.1.9	3 Gold Cushions/Pillows	Ada	For Ada and others to sit on.
I.2.14	Silver Tray	Bryron	For Champagne Glasses.
I.2.14	3 Champagne Glasses	Byron	They will not be drinking out of these; we do not need liquid in them.
I.4.29	Punched Card	Charles	See description in script, stored in Charles' pocket.
I.6.33	Small Bouquet/tussie-mussie	Anabella	For Ada, wedding moment.
I.8.41	Blueprint	Lovelace	Large roll of blue paper
I.8.41	Papers	Lovelace	
I.8.41	Fountain Pen	Lovelace	
I.8.42	Thick Stack of Papers	Babbage	Ada's notes on and Translation of Babbage's lecture.
II.1.46	Paper	Babbage	Preface for Ada's paper.
II.2.60	Pieced back together poetry book	Ada	Book from the beginning.

Ride the Cyclone

Oklahoma State University - 2023

Jerry Davis Studio Theatre

Music, Lyrics and Book by: Jacob Richmond and Brooke Maxwell

Director/Choreographer: Liz Bealko

Music Director: Eric David Frei

Stage Manager: Darcy Golla

Production Assistant: Carlie Wilson

Scenic Designer: Lee Brasuell

Costume Designer: Jason Estala

Lighting Designer: Clara Starkwell

Sound Designer: Harley Roché

Production Manager: Marley Giggey

Technical Director: Leslie Currell



Production Overview

6 Week Rehearsal Process | Run of 9 Performances | 6 Cast Members | 7 Crew Members | Onstage Band
Called Light, Sound, and Deck Cues

Photo Credit: John Beier

Piano/Conductor

5 #3 - Minor Turn (rev. 9/20/21)

② ev - 'ry - thing you loved, And ev - 'ry - thing you dreamed and

④ ev - 'ry - thing you loved, And ev - 'ry - thing you dreamed and

⑥ ev - 'ry - thing you loved, And ev - 'ry - thing you dreamed and

41 42 43 44

⑧ ev - 'ry - thing you feared, and ev - 'ry - thing that seemed so,

ev - 'ry - thing you feared, and ev - 'ry - thing that seemed so,

ev - 'ry - thing you feared, and ev - 'ry - thing that seemed so,

41 42 43 44

15

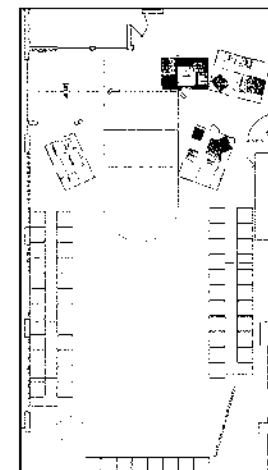
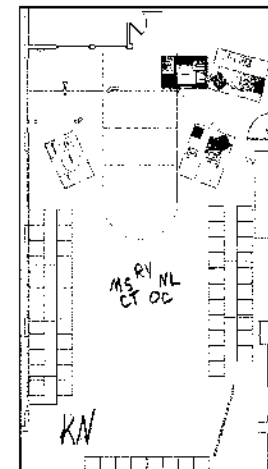
Griffin Music, LLC - Proprietor

② Choir look Center

④ Choir look out

⑥ Choir look in

⑧ Choir look Center



Date: 9/1

Script: _____

Score: 15

Piano/Conductor

6

#3 - Minor Turn (rev. 9/20/21)

②

oh so ter - ri - fy - ing, it's

oh so ter - ri - fy - ing, it's

oh so ter - ri - fy - ing, it's

Em⁹(maj7) Em⁹ Em⁹(maj7) Em⁹

(PLAY)

47 48 49 + K2 (Chorus Harmonic) 50

⑥

far be - hind, on the ground... Like our far from the ci - ty, lit - tie

far be - hind, on the ground... Like our far from the ci - ty, lit - tie

far be - hind, on the ground... Like our far from the ci - ty, lit - tie

B C#7/B C#7/B B/D#

118 (see notes)

51 52 53 54 55

Griffin Music, LLC - Preparation

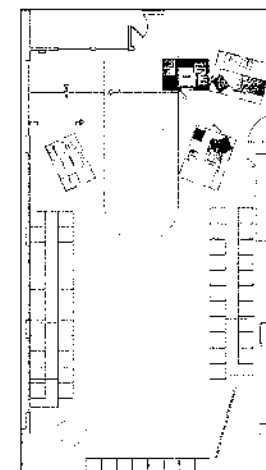
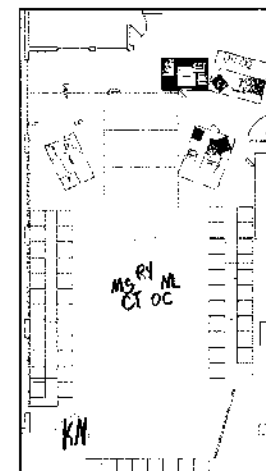
16

② Choir reach arms
up then

④ Choir bounce

⑥ Choir stand still

⑧ OC raises L Hand



Date: 9/1

Script:

Score: 16

Piano/Conductor

7

#3 - Minor Turn (rev. 9/20/21)

② ④ ⑥ ⑧ ⑩ ⑫

It - ty bit - ty pret - ty home - town, Just a tee - ny ti - ny

It - ty bit - ty pret - ty home - town, Just a tee - ny ti - ny

It - ty bit - ty pret - ty home - town, Just a tee - ny ti - ny

OP/EL R/CH

14 37 54 59

⑭

dot, on a wee blue ball, and we've all been

dot, on a wee blue ball, and we've all been

dot, on a wee blue ball, and we've all been

OP/EL R/CH

61 62 63

17

Griffin Music, LLC - Preparation

② CT raises R Hand

④ RY raises R Hand

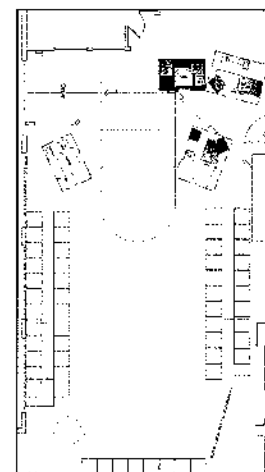
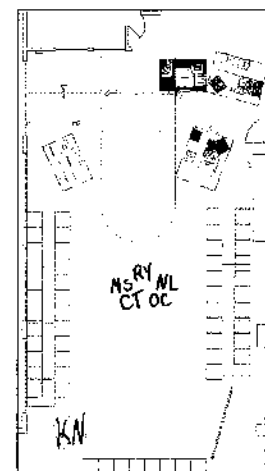
⑥ NL raises L Hand

⑧ MS raises R Hand

⑩ Choir waves, look Center

⑫ Choir lowers hands

⑭ Choir sway → SR
from feet + hips



Date: 9/1

Script:

Score: 17

spin - ning

spin - ning

spin - ning all been spin - ning

(Dr. (Org. 4th))

poco a poco accel.

⑧ INACC. CONS.

⑩

⑫

Round 'n' round 'n' round, 'n' round 'n' round Round 'n' round 'n'

RICYNI: MSCH

Round 'n' round 'n' round, 'n' round 'n' round Round 'n' round 'n'

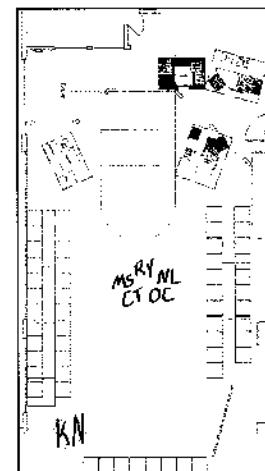
B DAD

(Dr. (Org. 4th))

⑧ Choir spin over R
Shoulder → Circle

⑩ Choir walks in
clockwise circle

⑫ Choir spin over R
Shoulder while
walking in circle



Date: 9/11

Script: _____

Score: 18

18

Score: 19

Piano/Conductor

10

#3 - Minor Turn (rev. 9/20/21)

②

tu - um

Smart ones all packed up and went, why stay if you can't pay the rent

Chorus

Chorus

⑥

⑧

A little faster ♩=130

Drink some

we will nev - er leave this town at all Drink some

⑫

⑭

⑮

IN/OC

Chorus

brew, join the choir, build your - self a fun - 'ral pyre U -

brew, join the choir, build your - self a fun - 'ral pyre U -

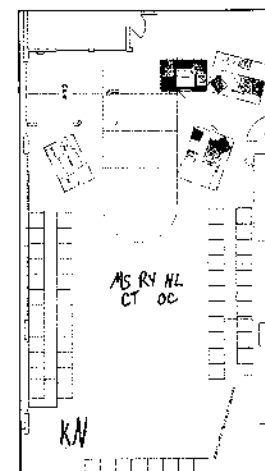
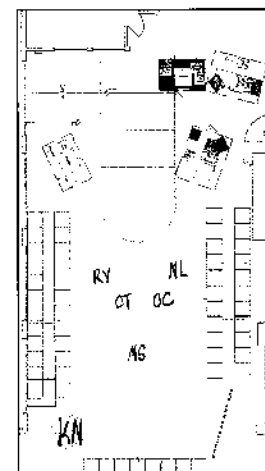
Dr. 01313

Griffin Music, LLC - Preparation

20

⑭ OC + CT spin US
 OC → [SL2, SL18]
 CT → [SR2, SR18]
 NL, MS, + RY spin DS
 NL → [SL4, SL20]
 MS → [CS0, CS12]
 RY → [SR4, SR20]

② NL, MS, + RY R
 Hand → Forehead
 OC + CT Arms out cross
 Face then down
 ③ NL, MS, + RY Arms
 → side
 ④ NL, MS, + RY "rent"
 ⑥ NL, MS, + RY point
 R Hand → Chest, L
 Hand on Hip
 OC + CT cross Arms
 to Chest
 ⑧ NL, MS, + RY cross US
 NL → [SL3, SL20]
 MS → [SR3, SR20]
 RY → [CS0, CS21]
 ⑩, ⑫, ⑭, ⑮ Next Page →



Date: 9/1
 Script: _____
 Score: 19-20

Piano/Conductor

11

#3 - Minor Turn (rev. 9/20/21)

poco accel.
GIRLS:

24 BOYS: ni um, our dead end dive, we'll
24 BOYS: ni um, our dead end dive, we'll

Chn/Gf

22 (arrived, growl)

11 8

nev er leave this town a live, no, we will
nev er leave this town a live, no, we will

10 12 14

nev er leave this town at
nev er leave this town at

Gf/B Gf

21

Griffin Music, LLC - Preparation

- ⑩ Choir "brew" pose
- ⑫ Choir "choir" pose
- ⑭ Choir "funeral" pose
- ⑯ OC + CT chug step

② NL + MS join chug step

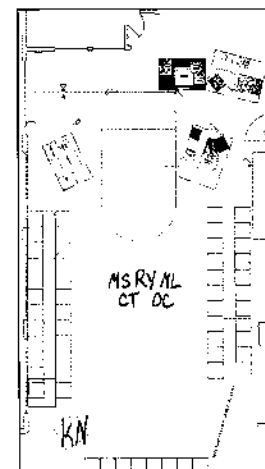
④ RY joins chug step

⑥ Choir steps out

⑩ OC + MS reach

⑫ NL + CT reach

⑭ RY reach



Date: 9/1

Script:

Score: 20-21

② IN/OC
CONS.

④ KARNAK

Greet - ings child - ren, it's time to play!

⑥

⑦ STUDENTS: (Boys Rob)

Earth is sky and sky is ground— Did we fin - ly leave our town?

⑩ (whispered)

⑫

② Choir cross US →
CS PLATFORM

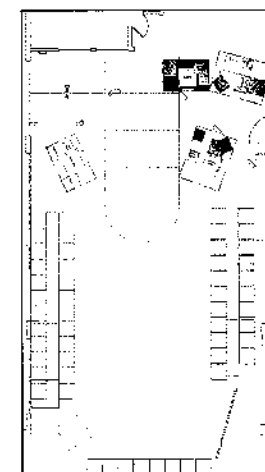
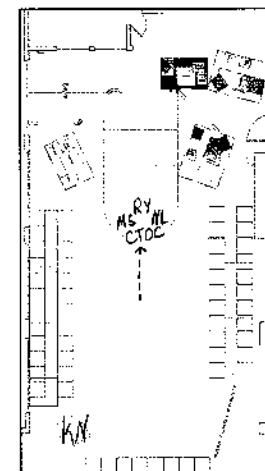
④ Choir look @ KN

⑥ Choir look Center

⑧ Choir roll up then
down

⑩ Choir look @ each
other

⑫ Choir look Center



Date: 9/1

Script: _____

Score: 22

The children stand gohsmacked, huddled together.)

OCEAN

Where are we?

SFX: KARNAK START-UP

MECHANICAL VOICE (SFX)

You have inserted t-t-t-two...loonies!

MECHANIZED CHOIR (SFX)

KARNAK! He sees the future!

OCEAN

(to KARNAK)

⑥ Look, what is this, what is happening?!

KARNAK

⑦ Meet Ocean O'Connell Rosenberg.

SFX: MEET OCEAN

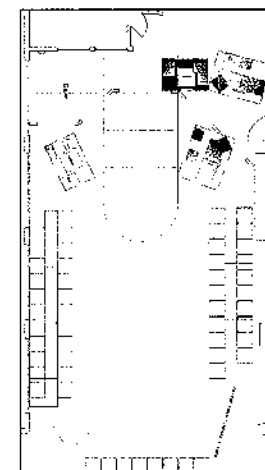
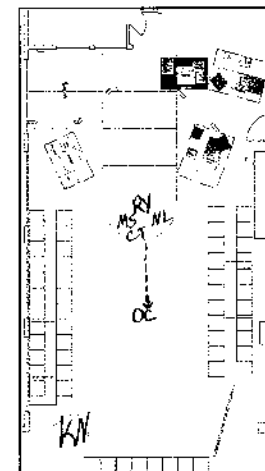
KARNAK

Catchphrase:

(OCEAN in a special, in an OCEAN pose.)

⑥ OC cross DS →
[CS0, CS18]

⑧ Choir freezes



Date: 9/5

Script: 6

Score: _____

② OCEAN
Democracy rocks!

(While KARNAK introduces the prizes, VIRGIL holds them.)

④ OCEAN
What the heck was that?

KARNAK
Your catchphrase. In the interest of the expedition of time, I've taken the liberty of choreographing a few of your moves in advance. Don't bore us; get to the chorus. Our time together is limited.

⑥ OCEAN
You said 'play' earlier. What exactly are we playing? Is this a game?

SFX: ~~GAME~~ GAME MODE

⑧ KARNAK
Ocean has selected game mode!

(Group grumbles.)

OCEAN
What?

⑩ (to CHOIR)
Guys, I really didn't. What game?

KARNAK
A game with fabulous prizes: Like a stale pack of Menthol Kools. → SFX: Menthol Kools

⑪ - cellphone. ⑬ SFX: CELLPHONE

KARNAK
A deep-fried Hello Kitty cupcake!!

SFX: CUPCAKE ⑭

⑮ KARNAK ⑯
This limited-edition Iron Maiden t-shirt still ripe with the pong of the carnage that wore it.

SFX: T Shirt

② OC poses

④ Choir unfreezes

⑥ NL, RY, CT + MS
cross US

⑧ NL, RY, CT, + MS
look up

⑩ OC steps US looks
@ KN

⑪ OC cross DS →
[SL4, SL12]

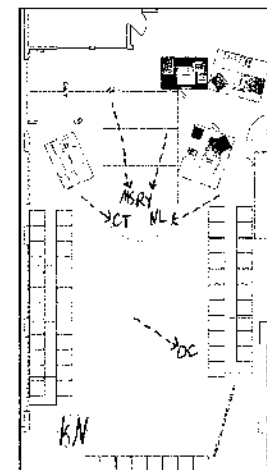
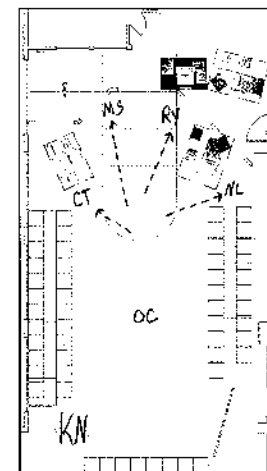
⑫ NL holds Menthol
Kools

⑬ MS holds Cellphone

⑭ CT holds Cupcake

⑮ RY holds T Shirt

⑯ NL, RY, MS + CT
cross → CS PLATFORM
smell T Shirt



Date: 9/5

Script: 7

Score: _____



DEPARTMENT OF
THEATRE
College of Arts and Sciences

RIDE THE CYCLONE

Performance Report

#2
Version I
10/13/2023
DRG

Friday, October 13th 2023

On-site Faculty:	Larry Huffman / Cat Yost	Location:	Davis Studio
House Manager:	Joy Sawyer	House Count:	68

Report Written By:	Darcy Golla
Davis Secured:	10:00pm by stage management

Absent/Tardy:	none
----------------------	------

Show #2	
Times: House Open: 7:15pm House Turned Over: 7:35pm Start Time: 7:36pm End Time: 9:08pm Total Run Time: 1 hour 32 minutes	Audience: We had a supportive audience tonight. They loved the costume change for Noel's Lament. We had a great response from the audience to Ricky's line "Or I could tell you about the time I was a superhero sex god on a cat planet."
Reason for Delay: n/a	

Performance Notes:

- The forearm crutch for Ricky's was not preset for top of show. Garrett did a great job portraying Ricky without it during Uranium.
- There were feedback and issues with Jenna's mic cutting in and out at the beginning of the show.
- LX 600 was called late due to SM distraction from headset static.
- LX 1070 was taken early, LX 1075 was taken late, and LX 1080 was called early due to SM and LX Board Op confusion/distraction to extreme static and feedback over the headset system after Space Age Bachelor Man.
- LX 1385 was taken early due to due to LX Board Op confusion static over the headset system at the end of Sugarcloud.

Fall 2023
Director: Liz Bealko
Music Director: Eric Frei

darcy.golla@okstate.edu

Page 1 of 2

OSU Theatre
SM: Darcy Golla
PA: Carlie Wilson



DEPARTMENT OF
THEATRE
College of Arts and Sciences

RIDE THE CYCLONE

Performance Report

#2
Version I
10/13/2023
DRG

Notes: *PLEASE READ ENTIRE SECTION AS NOTES MAY APPLY TO MULTIPLE AREAS*

General Notes:

No notes, thank you.

Scenic:

No notes, thank you.

Properties:

1. There was a small piece of metal found on the stage post show near the area where the popper goes off. It is the same as the piece that was found during tech. Is this from the popper or the curtain track?



Costumes:

1. Jenna's Cat ears were falling off during Space Age Bachelor Man. Post show Cat bent the headband to make it smaller and it was labeled with her name.
2. One of the charms on Anaya's necklace broke off before the show. Anaya does not know where it went.

Lighting:

1. Leslie and Larry fixed a lose bulb on the Cyclone sign before the show.

Sound:

No notes, thank you.

Director:

No notes, thank you.

Music:

1. The swings are back in the area behind the backstage curtain.

Stage Management:

1. The headset system was experiencing a lot of feedback, static and clicking tonight. Before the show Darcy tested all the headsets and could not figure out the cause of the issue. The static and clicking then went away before the show started and then got progressively worse as the show went on. At points it was a distraction, caused some confusion, and there were times where it was hard to understand what cues were being called.

Facilities:

No notes, thank you.

Thank you!

Darcy Golla SM

darcy.golla@okstate.edu

Fall 2023

Director: Liz Bealko

Music Director: Eric Frei

Page 2 of 2

OSU Theatre
SM: Darcy Golla
PA: Carlie Wilson

Godspell

Oklahoma State University - 2023

Vivia Nail Locke Theatre

Music and Lyrics: Stephen Schwartz

Book: John-Michael Tebelak

2012 Revised Version

Director: Devon Hunt

Music Director: Eric David Frei

Choreographer: Jessica Murphy

Stage Manager: Leah Anderson

Assistant Stage Managers: Evie Reitan & Kat Wardell

Production Assistant: Darcy Golla

Scenic Designer: Chapman Shields

Costume Designer: Jason Estala

Lighting Designer: Travis C. Richardson

Sound Designer: Harley Roché

Production Manager: Marley Giggey

Technical Director: Leslie Currell



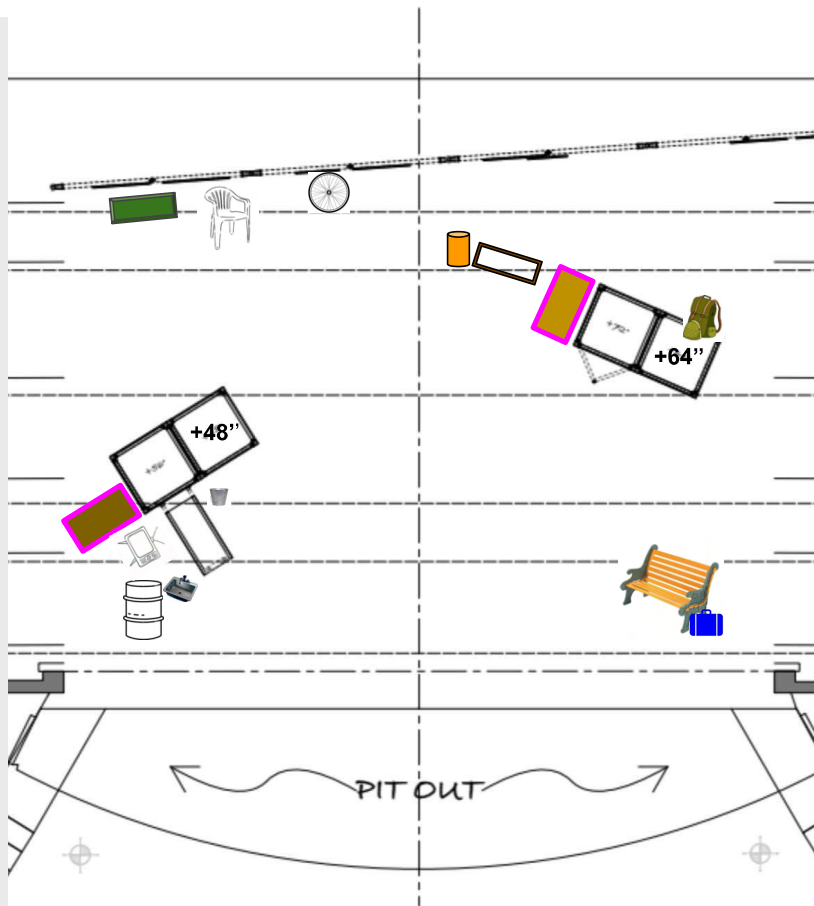
Production Overview

8 Week Rehearsal Process | Run of 4 Performances | 14 Cast Members | 8 Crew Members | Live Band
Tracked and Managed Over 120 Props

Photo Credit: Sandi DeVore

Top of Show

- Green Shutter
- Brown Shutter
- Plastic Chair
 - Radio
- 2 Bike Rims
- Dark Brown Chest
 - Covered in fabric
- TV
 - Black Hat
 - Red Flower
- Metal Bucket
 - Tambourine
 - 2 claves
 - Other noisemakers
- Burn Barrel
 - Covered with maroon fabric
 - Shovel
 - Wood Crutch
 - Camping Stool
 - Wood Stick
 - Burlap
- Sink
- Platforms
 - Covered in Tarps
- SR Prop Table
 - Green Suitcase
 - Soccerball
 - Cell Phone
 - Small White Bucket with Costume Pieces
 - Metal Bucket with sponge
 - Whistle
 - Slide whistle
 - Horn
 - Ribbon
 - Trick Scarf
 - Uke
 - Soccer Ball
- SL Prop Table
 - Baseball Bat
 - Black Umbrella
 - Red Cord
 - Book

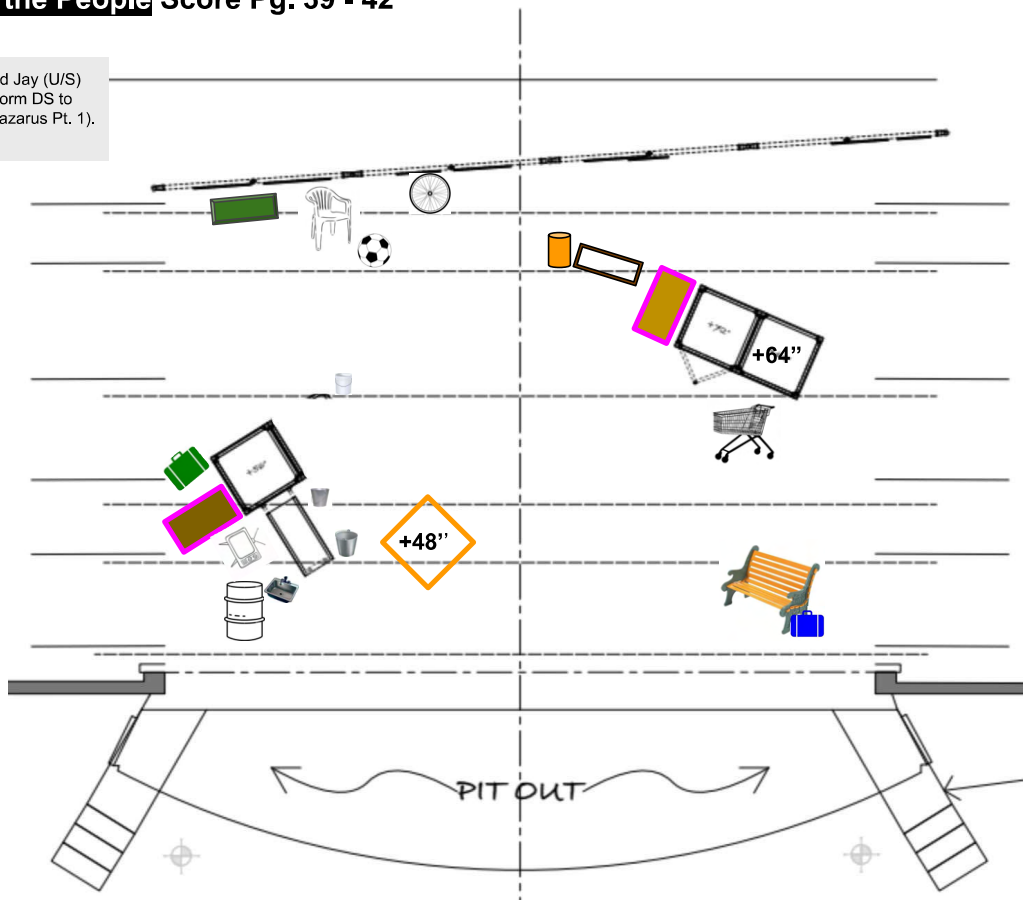


- Wood Pallet
 - Desk Bell
- Box
 - Gold Crown
 - Black Hat
- 2 Trash Can Lids
- Gray Lid
- Safety Netting
- Light Brown Chest
 - Covered with dark maroon fabric
- Bench
 - Covered with Green Fabric
- Under Bench
 - Crate of Noisemakers, Baseball Cap, and Magic Flower Pot
 - Golf Club
 - Wooden Pole
 - Blue Suitcase with Striped Fabric Inside
- Platforms
 - Covered in Tarps
 - Army Backpack with Noisemakers under +64" Platform
- Wing SL
 - Shopping Cart
 - Purple Blanket
 - Brown Paper
 - Gray Bucket with Net
 - Blue Pillow
 - Cardboard
 - Can + Marker
 - White Bucket with 14 cups, 2 bottles.
 - Corded Phone
 - Red Ball
 - Tin Pot
 - Lazarus!
 - Land Paper
 - Gray/Black Umbrella
 - Cow ears

As of: 4/25/2023 - DRG

#4 Save the People Score Pg. 39 - 42

Abbey (Uzo) and Jay (U/S) move +48" platform DS to orange spike (Lazarus Pt. 1). [Score Pg. 39]

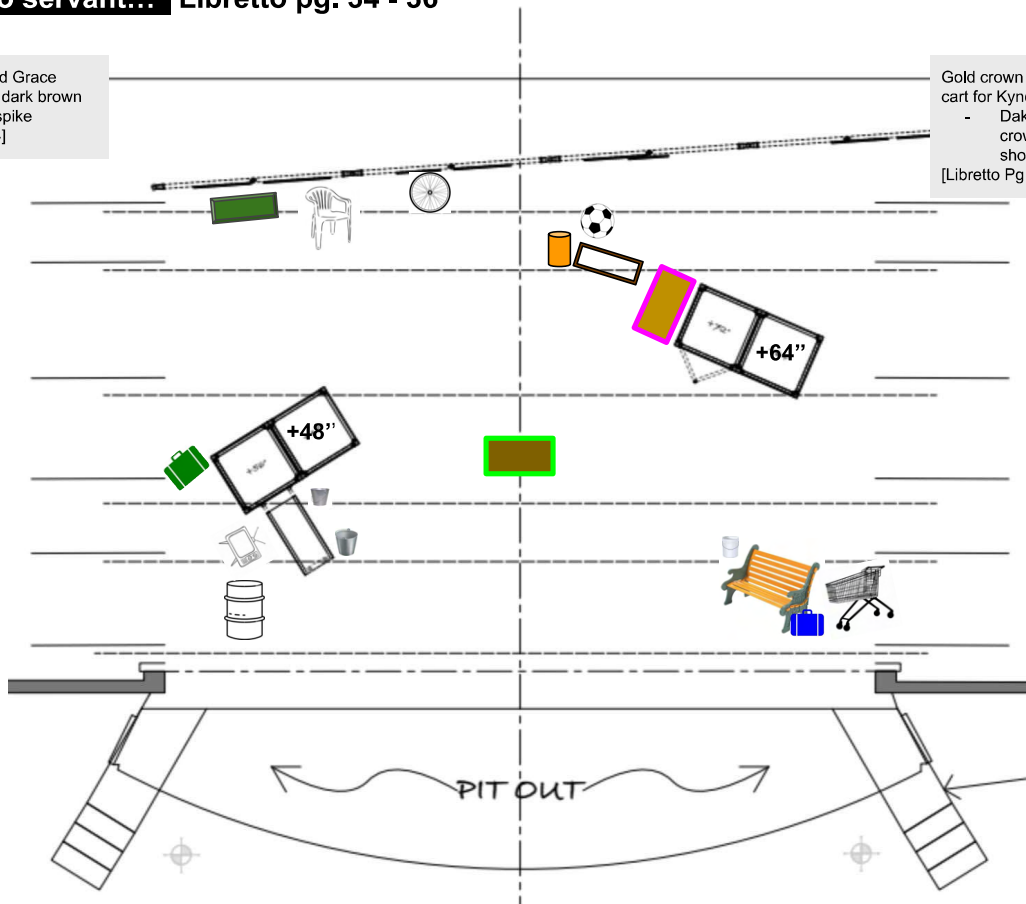


As of: 4/22/2023 - DRG

“Now, no servant...” Libretto pg. 34 - 36

Cyrus (Nick) and Grace (Morgan) move dark brown chest to green spike
[Libretto Pg. 34]

Gold crown from shopping cart for Kyndall (Lindsay)
- Dakota takes gold crown back to shopping cart
[Libretto Pg. 35]



As of: 4/19/2023 - DRG

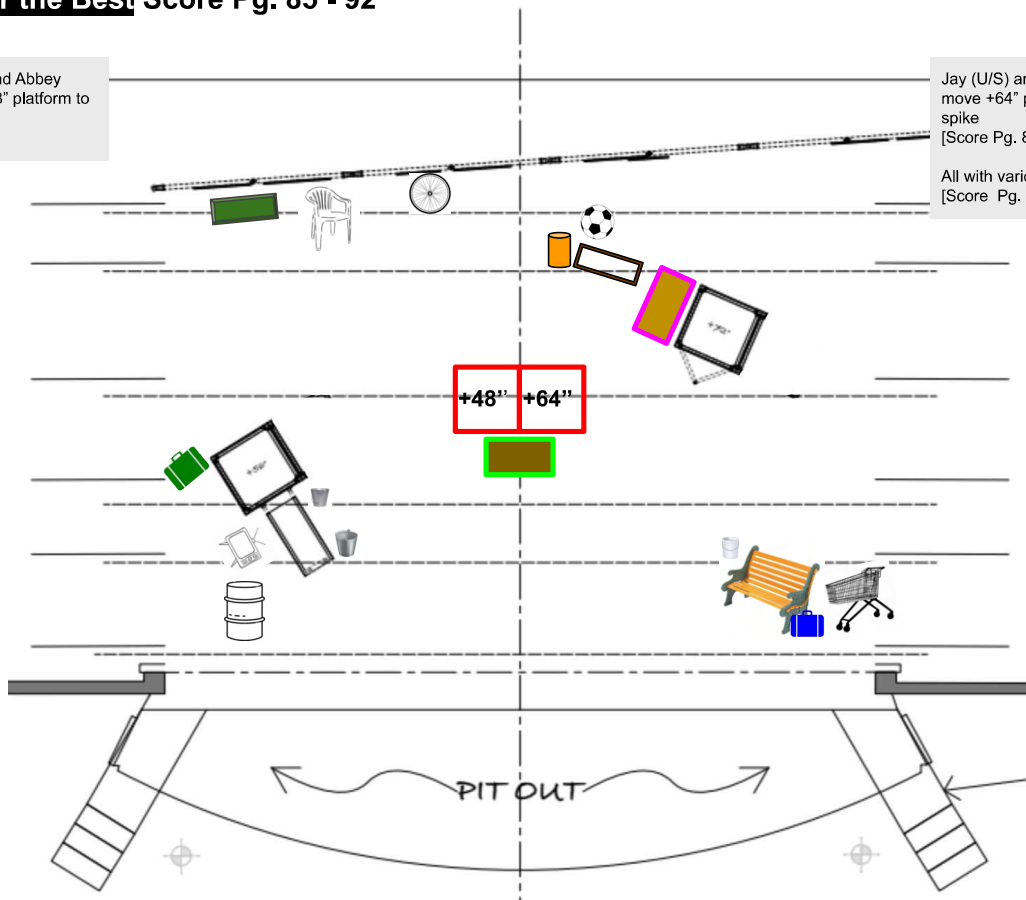
16

#8 All for the Best Score Pg. 85 - 92

Kel (George) and Abbey (Uzo) move +48" platform to red spike
[Score Pg. 85]

Jay (U/S) and Cyrus (Noah) move +64" platform to red spike
[Score Pg. 85]

All with various props
[Score Pg. 88]



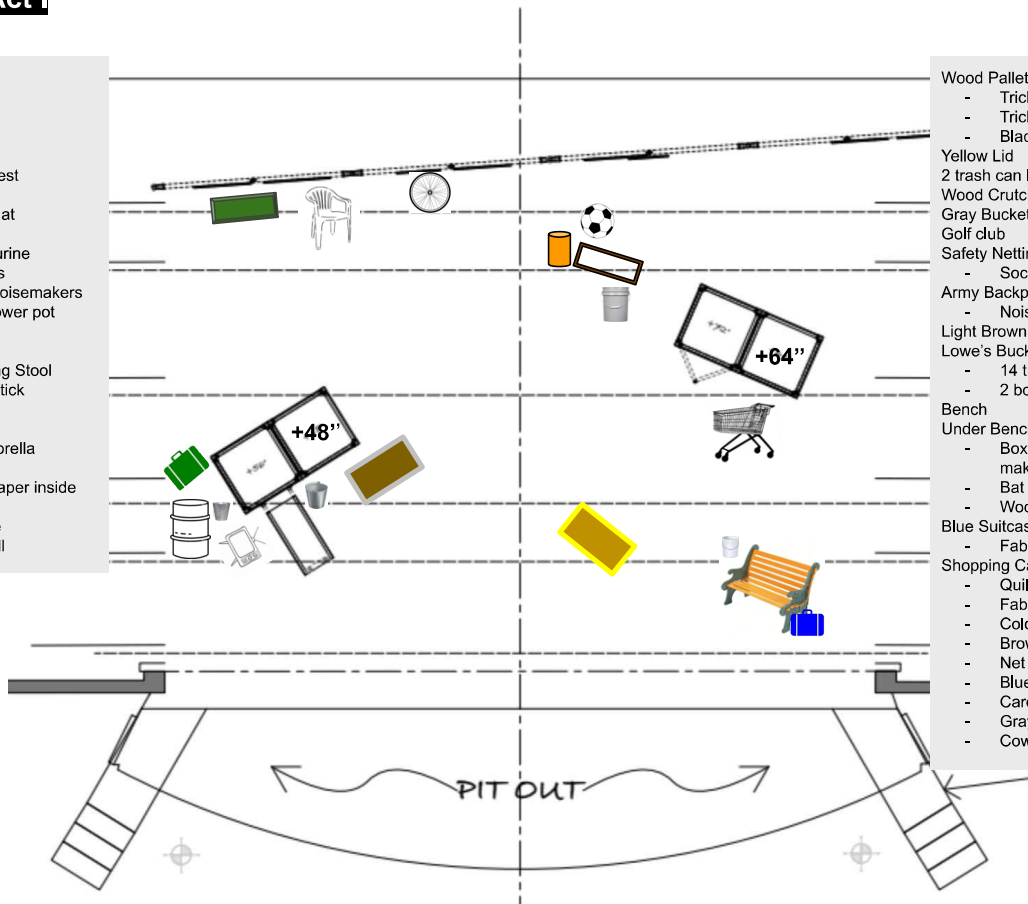
As of: 4/19/2023 - DRG

20

End of Act I

Green Shutter
Brown Shutter
Plastic Chair
- Radio
2 Bike Rims
Dark Brown Chest
TV
- Black Hat
Orange Bucket
- Tambourine
- 2 claves
- Other noisemakers
- Trick flower pot
Burn Barrel
- Shovel
- Camping Stool
- Wood stick
Sink
Horn
Yellow/blue umbrella
Green Suitcase
- Toilet paper inside
Metal Bucket
- Sponge
- Red ball

Wood Pallet
- Trick Flower
- Trick Scarf
- Black Hat
Yellow Lid
2 trash can lids
Wood Crutch
Gray Bucket
Golf club
Safety Netting
- Soccerball
Army Backpack
- Noisemakers
Light Brown Chest
Lowe's Bucket
- 14 tin cups
- 2 bottles
Bench
Under Bench
- Box with noise makers
- Bat
- Wooden Pole
Blue Suitcase
- Fabric inside
Shopping Cart
- Quilt
- Fabric
- Cold crown
- Brown Paper
- Net
- Blue Pillow
- Cardboard + marker
- Gray/Black Umbrella
- Cow ears



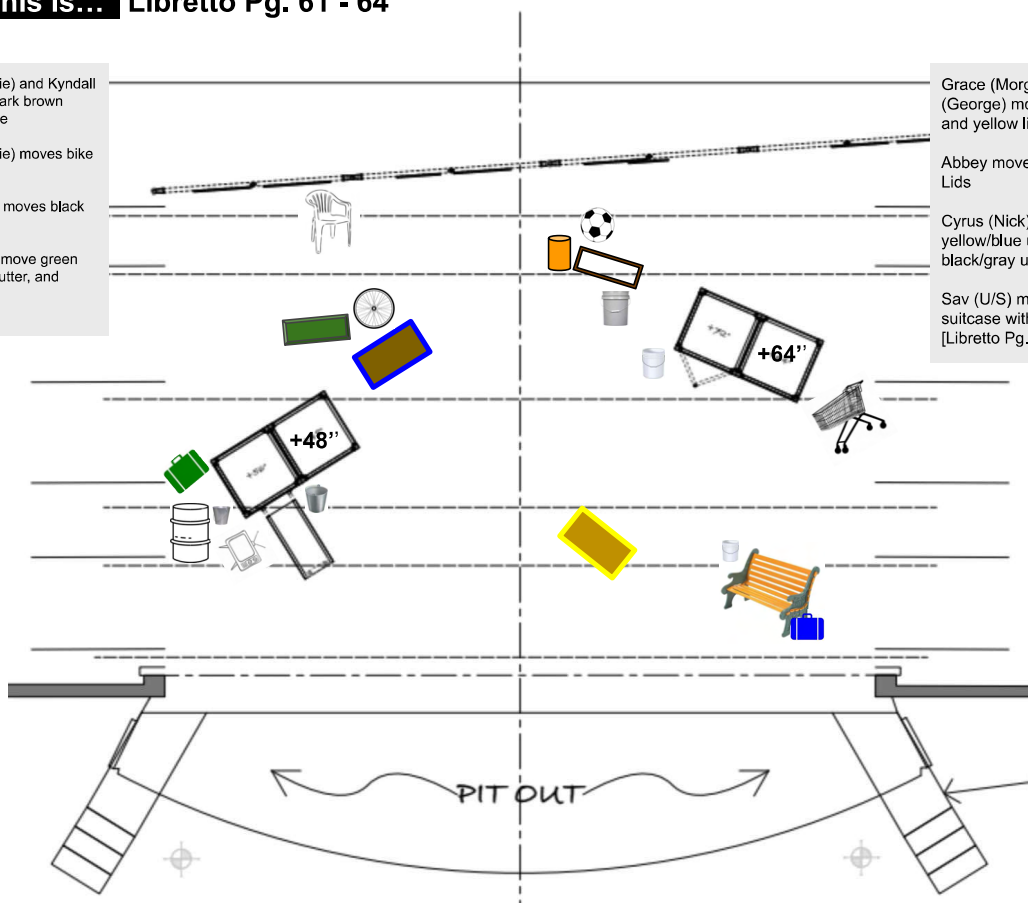
As of: 4/22/2023 - DRG

26

"Stop. This is..." Libretto Pg. 61 - 64

Jenna (Anna Marie) and Kyndall (Lindsay) move dark brown chest to blue spike
Jenna (Anna Marie) moves bike rims
Kyndall (Lindsay) moves black hat
Jay and Brigham move green shutter, brown shutter, and fabric
[Libretto Pg. 61]

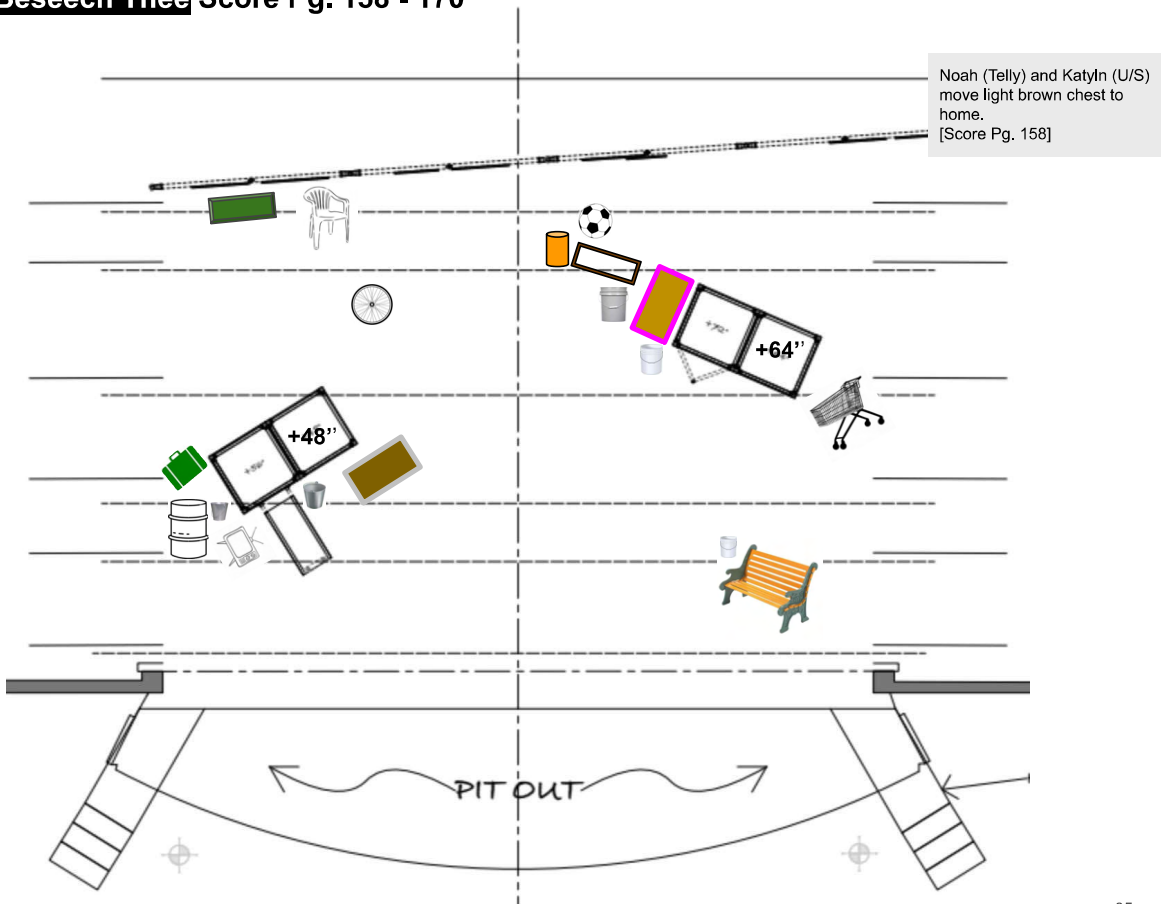
Grace (Morgan) and Kel (George) moves safety fence and yellow lid
Abbey moves 2 Trash Can Lids
Cyrus (Nick) moves yellow/blue umbrella and black/gray umbrella
Sav (U/S) moves blue suitcase with fabric
[Libretto Pg. 61]



As of: 4/19/2023 - DRG

29

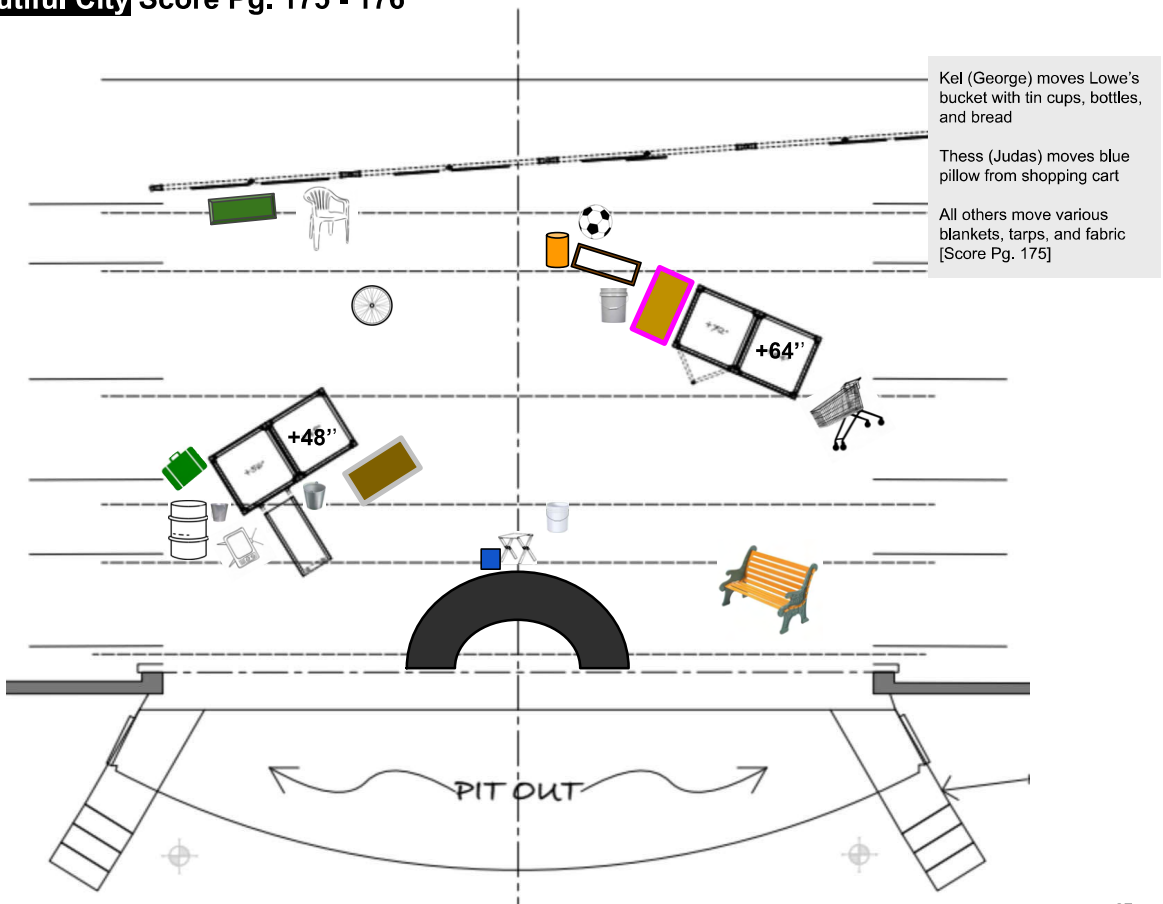
#15 We Beseech Thee Score Pg. 158 - 170



As of: 4/19/2023 - DRG

35

#16 Beautiful City Score Pg. 175 - 176



As of: 4/19/2023 - DRG

37

Rinaldo

Oklahoma State University - 2022
McKnight Center for the Performing Arts Performance Hall

Music: Georg Friedrich Händel

Libretto: Aaron Hill & Giacomo Rossi

1711 Barenreiter Edition

Staging Director: Steve Sanders

Opera Répétiteur: Megan Barth Argo

Conductor: Thomas Dickey

Stage Manager: Darcy Golla

Costume Designer: Ashlynn Bokesch

Lighting Designer: Travis C. Richardson

National Opera Association

2021-2022 Opera Production Competition

3rd Place, Division II



Production Overview

22 Rehearsals | Run of 2 Performances | 20 Cast Members | 7 Crew Members | 2 Casts
Onstage Orchestra | Called Light, Spotlight, Sound, Projection, and Deck Cues

Photo Credit: Robin Herrod

Rinaldo

Character/Scene Breakdown

		Act I														
		Scene 1														
		5	6	7	8	9	10	11	12	13	14	15	16	17	18	19
	Goffredo	+X	X	X	X	X	X	X	X	X	X	X	X	X	X	X
	Rinaldo	+X	X	X	X	X	X	X	X	X	X	X	X	X	X	X
	Almirena	+X	X	X	X	X	X	X	X	X	X	X-				
	Eustazio	+X	X	X	X	X	X	X	X	X	X	X	X	X	X	X
	Araldo															
	Argante															
	Armida															

		Act I														
		Scene 2					Scene 4									
		20	21	22	23	24	25	26	27	28	29	30	31	32	33	
	Goffredo	X	X	X	X	X	X	X	X	X	X	X	X	X	X-	
	Rinaldo	X	X	X	X	X	X	X	X	X	X	X	X	X	X-	
	Almirena															
	Eustazio	X	X	X	X	X	X	X	X	X	X	X	X	X	X-	
	Araldo	+X														
	Argante					+X	X	X	X	X	X	X	X	X	X	X
	Armida															

		Act I														
		Scene 4					Scene 5									
		34	35	36	37	38	39	40	41	42	43	44	45	46	47	
	Goffredo															
	Rinaldo															
	Almirena															
	Eustazio															
	Araldo															
	Argante	X	X	X	X	X	X	X	X	X	X	X-				
	Armida					+X	X	X	X	X	X	X	X	X	X	X

(X) Offstage, X Onstage, +X Enters, X- Exits, +X- Enters/Exits, Exits/Enters -X+

		Act I															
		Scene 6										Scene 7					
		48	49	50	51	52	53	54	55	56	57	58	59	60	61	62	63
	Goffredo																
	Rinaldo	+X	X	X	X	X	X	X	X	X	X	X	X	X	X	X	X
	Almirena	+X	X	X	X	X	X	X	X	X	X	X-					
	Eustazio																
	Araldo																
	Argante																
	Armida											+X-					

		Act I											
		Scene 8						Scene 9					
		64	65	66	67	68	69	74	75	76	77	78	
	Goffredo	X	X	X	X	X	X-						
	Rinaldo	X	X	X	X	X	X	X	X	X	X	X-	
	Almirena												
	Eustazio	X	X	X	X	X	X-						
	Araldo												
	Argante												
	Armida												

Rinaldo

Shift Plot

Cue #	Time	Page	Crew	Unit	Shift	Spike	Notes
Shift after 3. <i>Aria</i> “Ogn’indugio d’un amante”							
1	15:48	18 dal segno	Brennan Lacy / Christian Diaz	Beer Cans	STRIKE		Beer cans near center stage. Shift during BLACKOUT.
				Chair A	SET	Green	
Shift after 4. <i>Aria</i> “Sulla ruota”							
2	20:03	23 da capo	Brennan Lacy / Christian Diaz	Chair A	STRIKE		Shift during BLACKOUT.
Shift during 5. <i>Aria</i> “Sibilar gli angui d’Aletto”							
3	23:58	28 da capo	Soldier	Chair E	SET	Orange	
			Mike Bullington	Chair F	SET	Orange	
				Table 1	SET	Orange	
				wine bottle + 2 wine glasses	SET	On table	
Shift after 7. <i>Aria</i> “Vieni, o cara”							
4	32:30	37 dal segno	Analisa Gallegos	Chair E	STRIKE		Shift during BLACKOUT.
			Cassie Andel	Chair F			
			Charlotte Sams	Table 1	STRIKE		
			Lauren Reece	wine bottle + 2 wine glasses	STRIKE	On table	
			Mike Bullington	Couch	SET	Yellow	
			Brennan Lacy / Christian Diaz				
			Mike Bullington	Small Table w/ Flowers in Vase	SET	Yellow	

Cue #	Time	Page	Crew	Unit	Shift	Spike	Notes
Shift after 10. Aria “Molto voglio”							
5	35:03	45 dal segno	Mike Bullington	Couch	STRIKE		Shift during BLACKOUT.
			Brennan Lacy / Christian Diaz				
			Cassie Andel	Small Table w/ Flowers in Vase	STRIKE		
			Lauren Reece	Queen Bed + Gun Case	SET	Pink Gun Case Under bed.	
			Mike Bullington				
			Brennan Lacy / Christian Diaz				
			Charlotte Sams	Dress Partition	SET	Pink	
			Adeline Skillman	Table 1	SET	Pink	
			Analisa Gallegos	Chair A	SET	Pink	
				Chair B	SET	Pink	
Shift after 14. Aria “Cara sposa”							
6	48:11	59 da capo	Lauren Reece	Queen Bed	STRIKE		Shift during BLACKOUT.
			Brennan Lacy / Christian Diaz				
			Mike Bullington	Gun Case	STRIKE	At center.	
			Charlotte Sams	Dress Partition	STRIKE		
			Adeline Skillman	Table 1 + Breakfast Tray	STRIKE		
			Analisa Gallegos	Chair A	STRIKE		
				Chair B			