

# Rainbow Memories

Pete Stephenson

♩ = 116  
D A C G D

You said I was your happ-i-ness

Detailed description: This system contains the first five measures of the piece. The tempo is marked as quarter note = 116. The key signature has two sharps (F# and C#). The time signature is 4/4. The vocal line (treble clef) has rests for the first four measures and a melodic phrase in the fifth measure. The piano accompaniment (grand staff) features chords in the right hand and single notes in the left hand.

♩ = 116

Detailed description: This system shows the piano accompaniment for the first five measures. The right hand plays chords with moving lines, while the left hand plays single notes. The chords correspond to the chord symbols D, A, C, G, and D.

6 A/C# Em G<sup>6</sup> A<sup>7</sup>/G

— but then you went and found it up and left me stran-ded

Detailed description: This system contains measures 6 through 10. Measure 6 has a vocal line with a rest and piano accompaniment. Measures 7-10 contain the vocal line with lyrics and piano accompaniment. The chord symbols are A/C#, Em, G6, and A7/G.

Detailed description: This system shows the piano accompaniment for measures 6 through 10. The right hand plays chords with moving lines, and the left hand plays single notes. The chords correspond to the chord symbols A/C#, Em, G6, and A7/G.

2

9

D

A/C#

Em

Vocal melody for measures 9-11. Measure 9: quarter rest, eighth note G4, quarter note A4, eighth note B4, quarter note C5. Measure 10: quarter rest, eighth note B4, quarter note A4, eighth note G4, quarter note F4. Measure 11: quarter rest, eighth note E4, quarter note D4, eighth note C4, quarter note B3.

You did-n't ev - en say good-bye\_\_ and its been so long

Piano accompaniment for measures 9-11. Measure 9: bass clef, whole note G2. Treble clef: quarter notes G4, A4, B4, C5. Measure 10: bass clef, whole note F2. Treble clef: quarter notes B4, A4, G4, F4. Measure 11: bass clef, whole note E2. Treble clef: quarter notes E4, D4, C4, B3.

12

G

Em

Bm

Vocal melody for measures 12-14. Measure 12: quarter note G4, quarter note A4, quarter note B4, quarter note C5. Measure 13: quarter note B4, quarter note A4, quarter note G4, quarter note F4. Measure 14: quarter note E4, quarter note D4, quarter note C4, quarter note B3.

since you left me all al - one has gone so fast\_\_ cos the

Piano accompaniment for measures 12-14. Measure 12: bass clef, whole note G2. Treble clef: quarter notes G4, A4, B4, C5. Measure 13: bass clef, whole note F2. Treble clef: quarter notes B4, A4, G4, F4. Measure 14: bass clef, whole note E2. Treble clef: quarter notes E4, D4, C4, B3.

15

C

G<sup>6</sup>

A

D

Vocal melody for measures 15-17. Measure 15: quarter note G4, quarter note A4, quarter note B4, quarter note C5. Measure 16: quarter note B4, quarter note A4, quarter note G4, quarter note F4. Measure 17: quarter note E4, quarter note D4, quarter note C4, quarter note B3.

love we most re-mem-ber is the love that nev-er lasts I think of you and all I see

Piano accompaniment for measures 15-17. Measure 15: bass clef, whole note G2. Treble clef: quarter notes G4, A4, B4, C5. Measure 16: bass clef, whole note F2. Treble clef: quarter notes B4, A4, G4, F4. Measure 17: bass clef, whole note E2. Treble clef: quarter notes E4, D4, C4, B3.

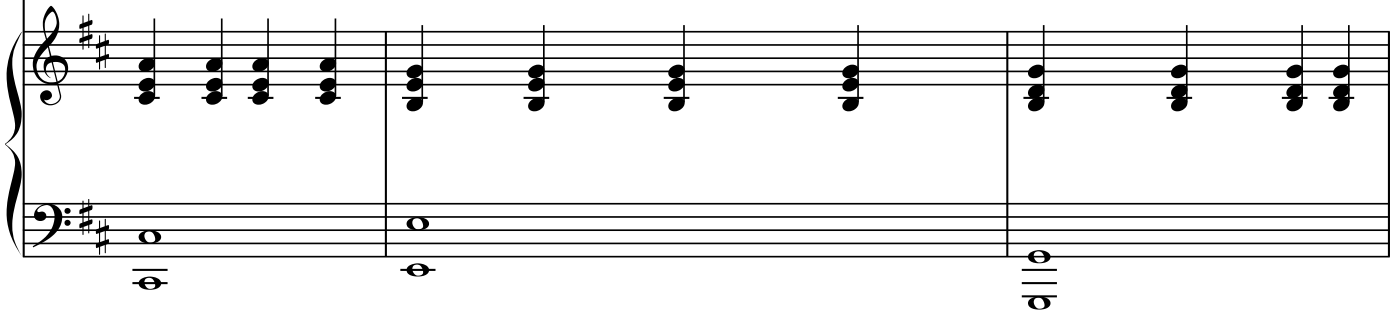
18 A/C#

Em

G<sup>6</sup>



is all the things we could have been and those rain-bow mem-or-ies



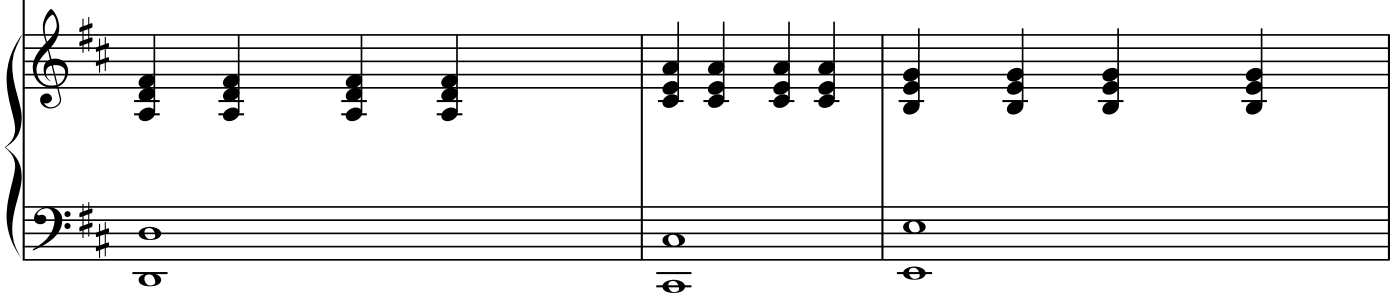
21 D

A<sup>6</sup>/C#

Em



I think of eve-ry-thing you meant to me and what I miss the most is those



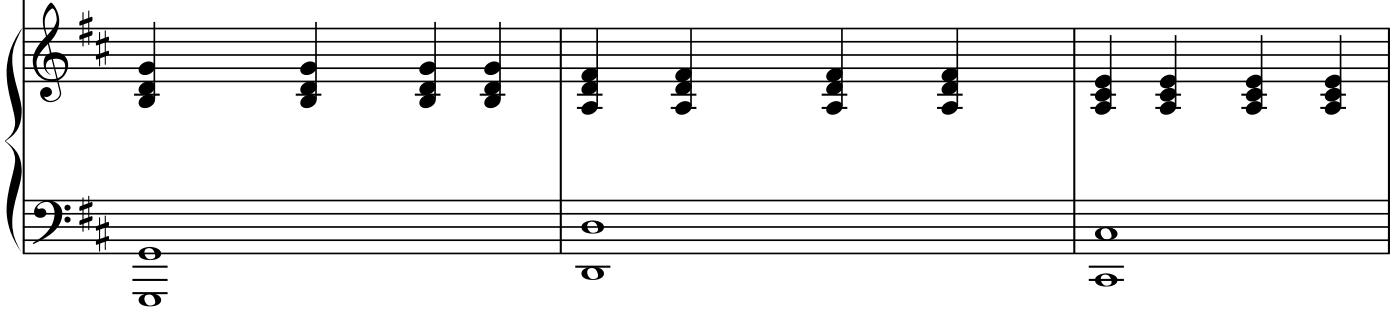
24 G

D

A<sup>6</sup>/C#



rain-bow mem-or-ies You said that no-thing was meant to be



27 Em G A<sup>7</sup>/G D

I wish I had'n't let you go so eas-i - ly\_ I didn't rea-lise that I

30 A<sup>6</sup>/C# Em G

hurt you so much and I'm sor ry that I nev-er kept in touch and the time

33 Em Bm C

has gone so fast\_ cos the love we most re-mem-ber is the

36  $G^6$   $A^{11}/G$   $D$   $A/C\#$

love that nev-er lasts I think of you and all I see is

39  $Em$   $G^6$

all the things we could have been and those rain-bow mem - or - ies

41  $D$   $A^6/C\#$   $Em$

I think of eve-ry-thing you meant\_\_ to me and what I miss the most is those

44 G D A/C#

rain-bow mem-or-ies It's hard to be an\_\_\_ gry with some - one who

Detailed description: This block contains measures 44 to 46. The key signature has two sharps (F# and C#). The top staff is a vocal line. Measure 44 starts with a G chord and the lyrics 'rain-bow mem-or-ies'. Measure 45 has a D chord and the lyrics 'It's hard to be an\_\_\_ gry with some - one who'. Measure 46 has an A/C# chord. The bottom staff shows piano accompaniment with chords G, D, and A/C#.

47 Em G A7/G D

on - ly ex-ists in the past\_\_\_ you could have been all\_

Detailed description: This block contains measures 47 to 49. The top staff is a vocal line. Measure 47 starts with an Em chord and the lyrics 'on - ly ex-ists in the past\_\_\_'. Measure 48 has a G chord and the lyrics 'you could have been all\_'. Measure 49 has A7/G and D chords. The bottom staff shows piano accompaniment with chords Em, G, A7/G, and D.

50 A/C# Em G A7/G D

\_\_\_ of my fu - ture if you'd giv-en me one last chance\_\_\_ Take me back to the

Detailed description: This block contains measures 50 to 53. The top staff is a vocal line. Measure 50 starts with an A/C# chord and the lyrics '\_\_\_ of my fu - ture if you'd giv-en me one last chance\_\_\_'. Measure 51 has an Em chord and the lyrics 'Take me back to the'. Measure 52 has a G chord. Measure 53 has an A7/G chord. The bottom staff shows piano accompaniment with chords A/C#, Em, G, and A7/G.

54 A/C# Em G A7/G D A/C#

times when I fell in love with you and our rain - bow mem - or - ies is

59 Em G A7/G D A/C#

all that we ev - er knew I think of you and all I see is

63 Em G<sup>6</sup>

all the things we could have been and those rain - bow mem - or - ies

65 D A<sup>6</sup>/C#

I think of eve - ry - thing you meant\_ to me

67 Em G A<sup>11</sup>/G D

and what I miss the most is those rain-bow mem or-ies