

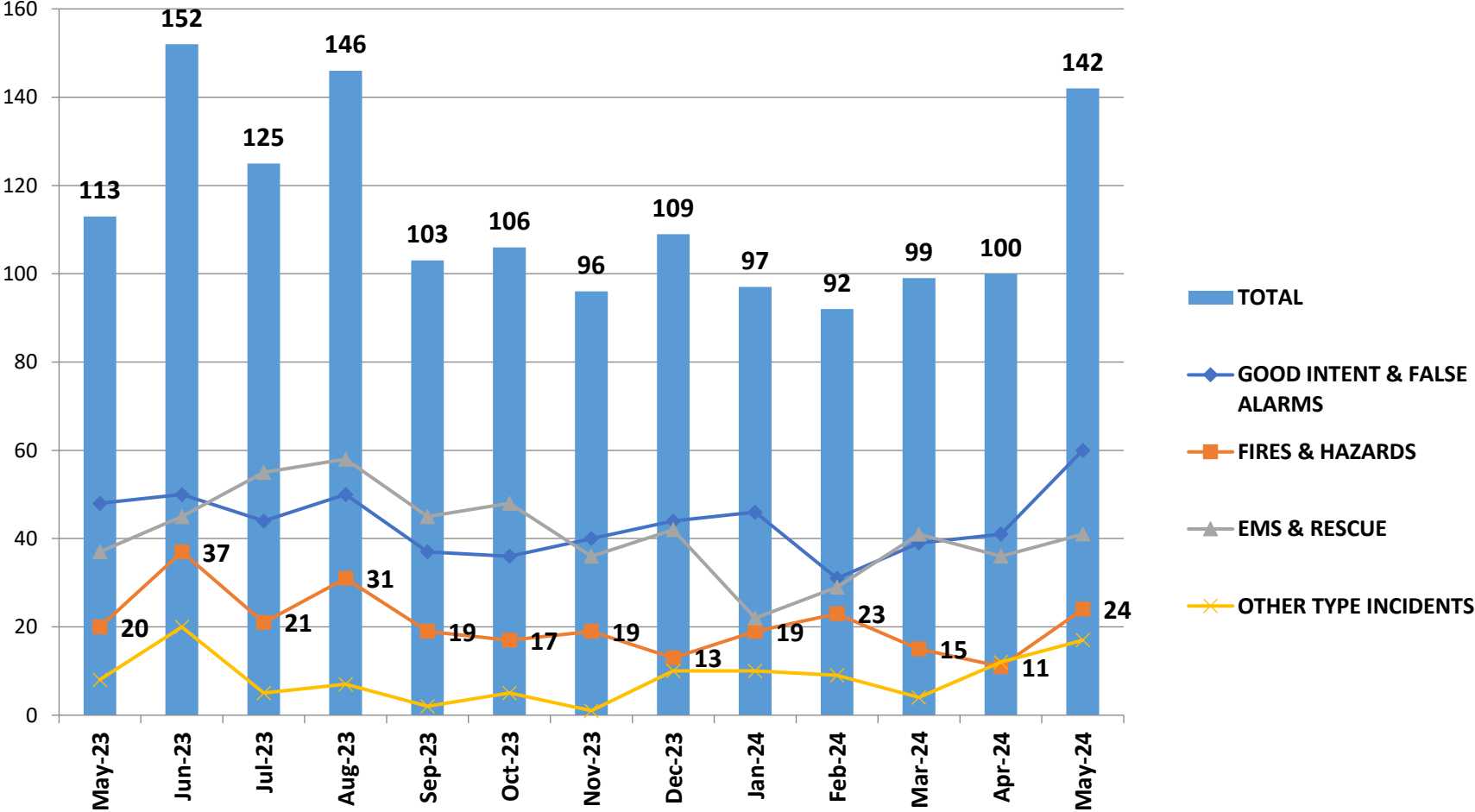
HARRIS COUNTY ESD 29 CHAMPIONS ESD

MAY 2024 FIRE REPORT



Presented: JULY 3, 2024

Monthly Incident Trends



ESD 29 - Incident Type Breakdown

This measure comes from the ESO Fire Index. See national performance at: <https://www.eso.com/resources/fire-index/>

Count of Total Incidents & Exposures



Count of Incidents

142

Count of Exposures 142

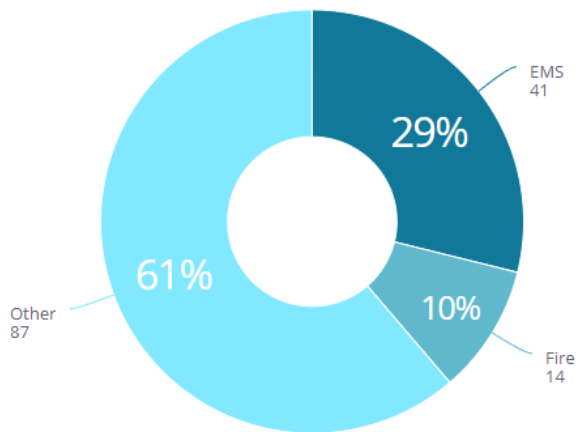
Aid Given/Received



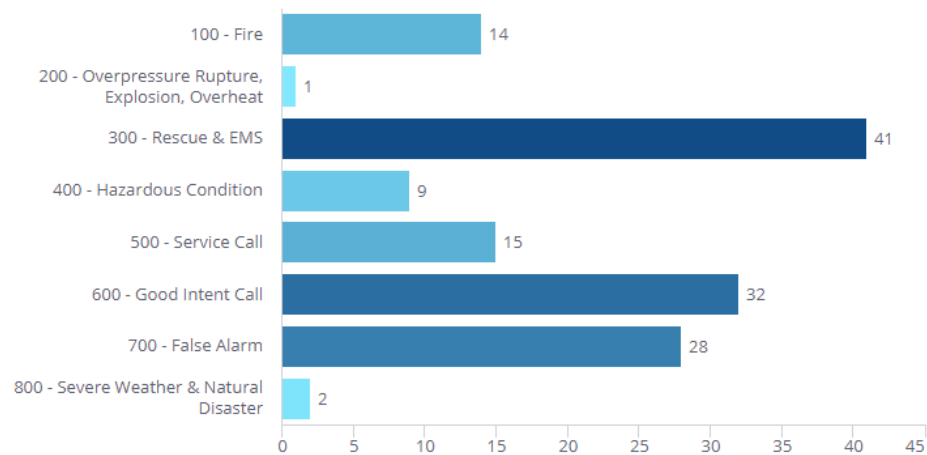
Aid Given

19

EMS/Fire Incident Breakdown



Count of Incidents by Incident Type



Total Incident Volume



Active equals Yes
Locked equals Yes
Apparatus Name equals E10, E11, E12, TW11

01:25

MM:SS
Average Turnout Time

29%

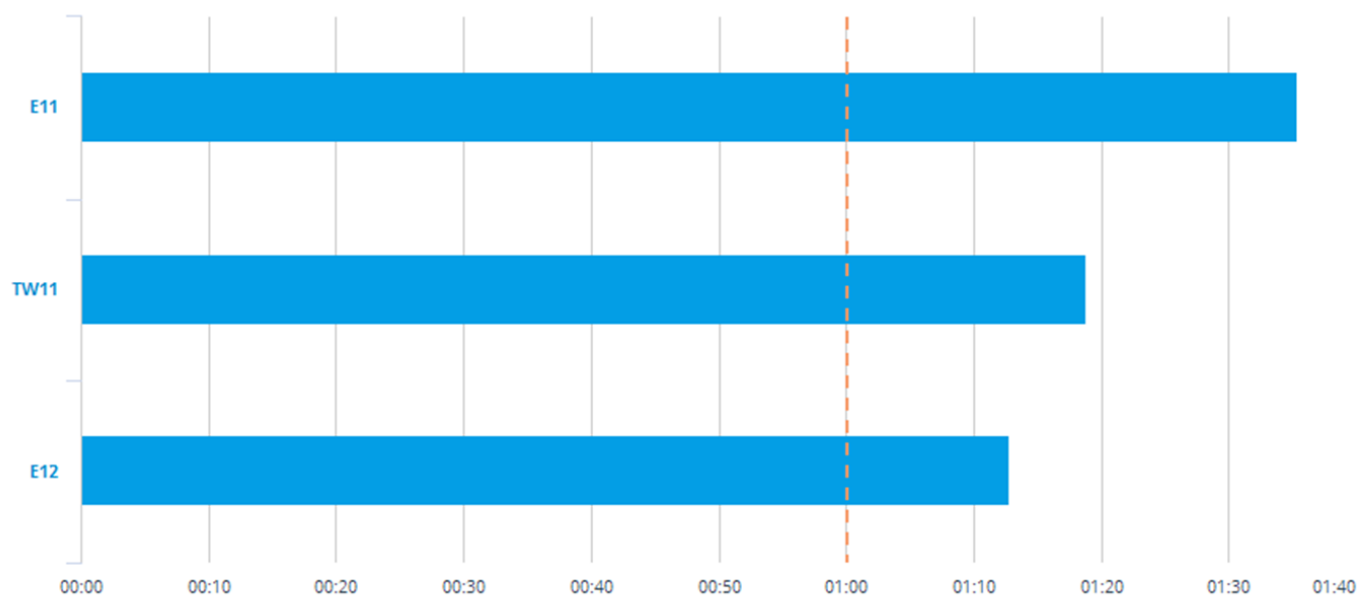
Of Responses
Turnout Time < 01:00

138

Incidents
In Selected Time Slice

31

DAYS
In Selected Time Slice



Average Turnout Time



Active equals Yes
 Apparatus Arrival Sequence equals 1
 District equals In-District
 Apparatus Name equals E10, E11, E12, TW11

05:18

MM:SS
 Average First
 Apparatus Travel Time

08:23

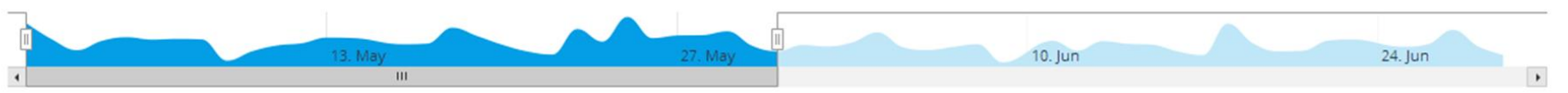
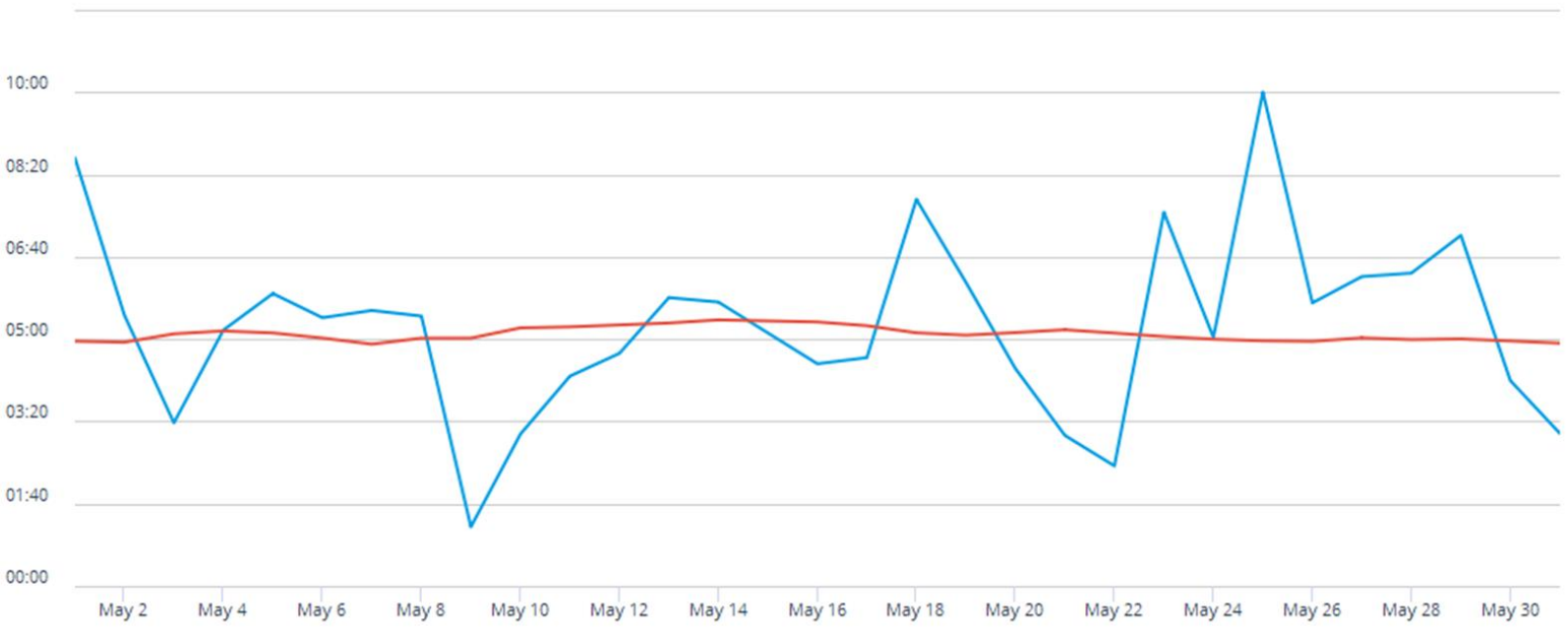
MM:SS
 90th Percentile First
 Apparatus Travel Time

31

DAYS
 In Selected Time Slice

92

INCIDENTS
 In Selected Time Slice



Average Travel Time in District

(Emergency and Non-Emergency)

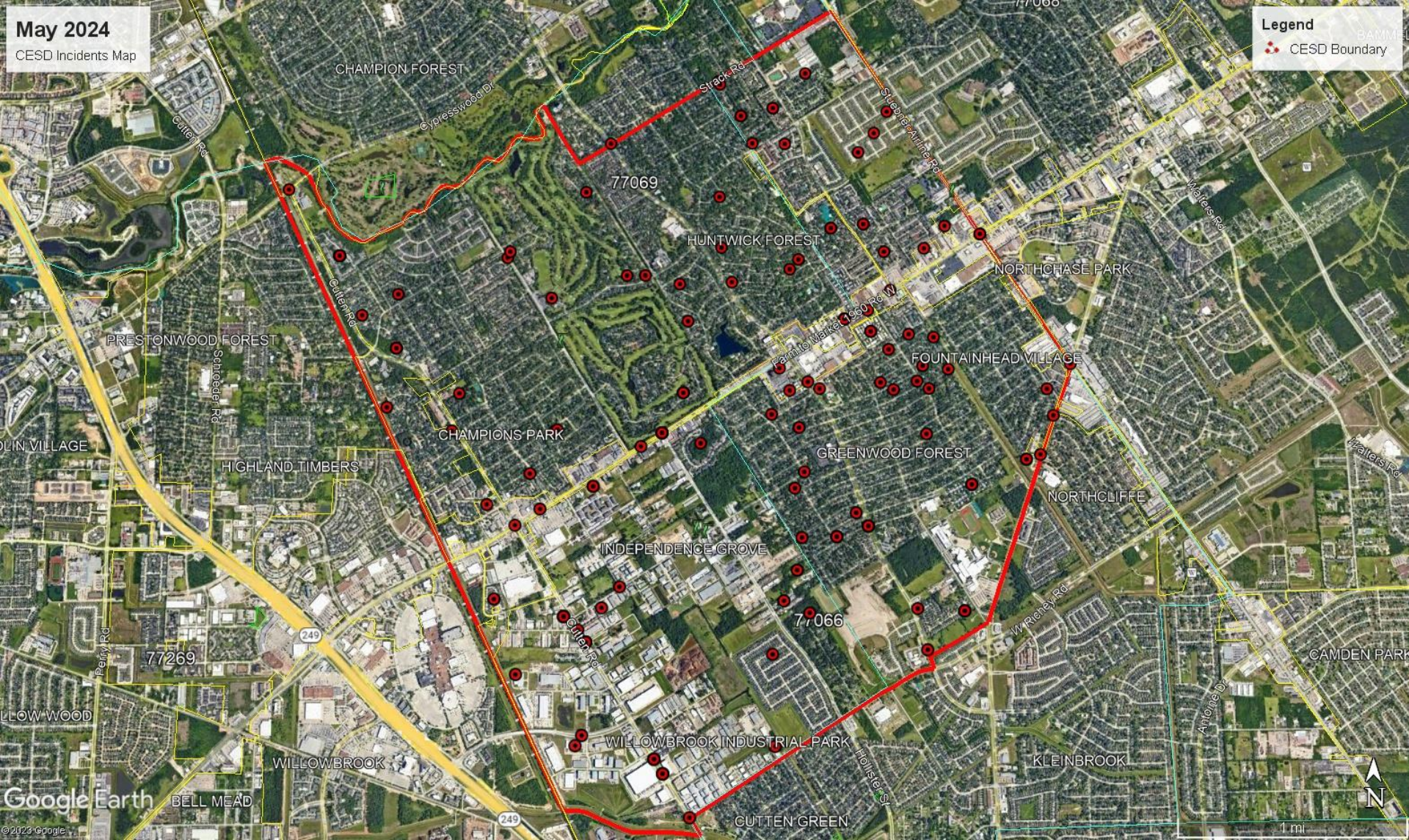
Month	2024
January	5:46
February	6:01
March	6:06
April	5:57
May	6:43
June	
July	
August	
September	
October	
November	
December	

In-District Response Time Trend

(2024 – Emergency and Non-Emergency)

Date	Location	Incident Type
5/21/24	12811 Greenwood Forest Dr	Apartment - Kitchen
5/5/24	5311 Old Lodge	Residential - Lightning

In-District Major Incidents



May 2024
CESD Incidents Map

Legend
CESD Boundary

HEAT MAP In-District Only

AID GIVEN	AID RECEIVED
19	5

ASSISTED	AID GIVEN
Little York FD	4
Klein FD	8
Cy-Creek FD	4
Ponderosa FD	3

AID GIVEN / RECEIVED



Questions?