

SAMPLE INFO

Sample Matrix: Gummy
 Strain: Z Strain, Tidal Wave, Mazapatec, JMF, HB, Ghost,
 APE, B+, GT, Blue Meanie, Thai Pink Buffalo
 Product: SOUL -N- SCIENCE
 Flavor: Mango
 Sample ID: SNS.5.CM.MNG.GUM.020326

CERTIFICATE OF ANALYSIS

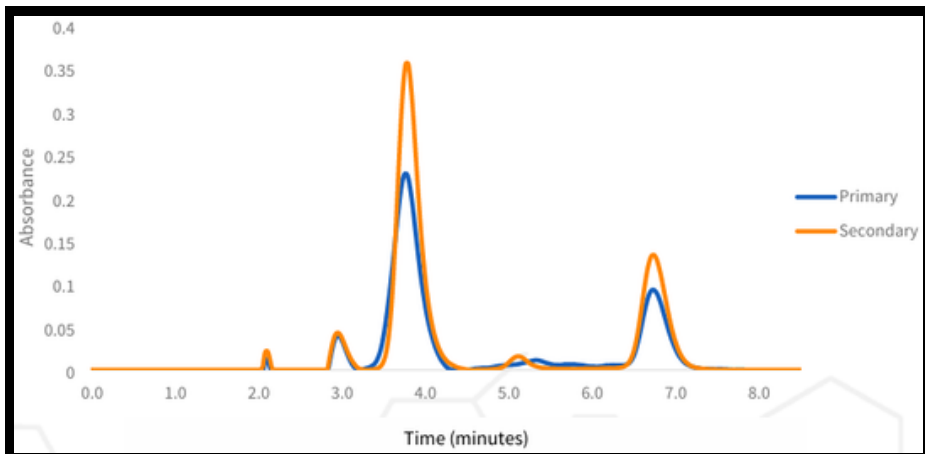
CLIENT INFO
 SOUL -N- SCIENCE



SOUL -N- SCIENCE 5 mg Mango Gummies

PRODUCT INFORMATION

Serving Size	Average Serving Weight	Servings per Package	Average Net Weight
1 Gummy	5.341 g	10	53.406 g



POTENCY RESULTS

Analyte	%	mg per Serving	mg per Package	LOQ
Psilocybin	0.068%	3.63 mg	36.32 mg	0.058%
Psilocin	0.047%	2.51 mg	25.10 mg	0.0049%
4-AcO-DMT (Synthetic)	ND	ND	ND	0.058%
Total Psychedelic Tryptamines	0.115%	6.14 mg	61.42 mg	-
Total Psilocin	0.096%	5.12 mg	51.21 mg	-

ND = Non-Detect (below LOQ)
 NA = Not Analyzed
 LOQ = Limit of Quantification
 Total Psychedelic Tryptamines = Psilocybin + Psilocin
 Total Psilocin = (Psilocybin * 0.719) + Psilocin

Data reviewed and approved by:

Noah Novello
 Noah Novello
 Founder, Lead Scientist

02/18/2026
 Date



Scan for Authenticity

These results relate only to the sample included on this report. Friday Ventures LLC makes no claim as to the efficacy, safety, or risks associated with any detected or non-detected level of any compounds reported herein. This report is for informational purpose only and should not be used to diagnose, treat, or prevent any disease. Client acknowledges that they are over the age of 21 and the Natural Medicine or Natural Medicine Product provided for analysis is intended for personal use. Friday Ventures LLC is not licensed by the state of Colorado to conduct testing nor is a licensed facilitator pursuant to article 170 of title 12.

SAMPLE INFO

Sample Matrix: Gummy
Strain: Z Strain, Tidal Wave, Mazapatec, JMF, HB, Ghost,
APE, B+, GT, Blue Meanie, Thai Pink Buffalo
Product: SOUL -N- SCIENCE
Flavor: Mango
Sample ID: SNS.5.CM.MNG.GUM.020326

CERTIFICATE OF ANALYSIS

CLIENT INFO

SOUL -N- SCIENCE



DOSING CHART

Total Psilocin (mg)	Dose Size	Servings	Packages
0.25 mg	Sensitive Micro	0.05	0.005
0.5 mg	Light Micro	0.1	0.01
1 mg	Micro	0.2	0.02
1.5 mg	Micro +	0.3	0.03
3 mg	Social	0.6	0.06
5 mg	Light	1.0	0.1
10 mg	Small	2.0	0.2
20 mg	Medium	3.9	0.4
25 mg	Therapeutic	4.9	0.5
30 mg	Large	5.9	0.6
40 mg	Heavy	7.8	0.8
50 mg	Mystical	9.8	1.0

*Sensitivity to psychedelics may vary based on individual weight, body chemistry, tolerance, history, stomach content, mindset, environment and/or medication.

PROCESSING INFORMATION

Method	Instrument	Instrument Temperature	Sample Received	Sample Size
LightLab HPLC	LightLab 3 PSY - HPLC	25.4 °C	02/13/2026	10 Servings

ND = Non-Detect (below LOQ)
NA = Not Analyzed
LOQ = Limit of Quantification
Total Psychedelic Tryptamines = Psilocybin + Psilocin
Total Psilocin = (Psilocybin * 0.719) + Psilocin

Data reviewed and approved by:

Noah Novello
Founder, Lead Scientist

02/18/2026
Date



Scan for Authenticity

These results relate only to the sample included on this report. Friday Ventures LLC makes no claim as to the efficacy, safety, or risks associated with any detected or non-detected level of any compounds reported herein. This report is for informational purpose only and should not be used to diagnose, treat, or prevent any disease. Client acknowledges that they are over the age of 21 and the Natural Medicine or Natural Medicine Product provided for analysis is intended for personal use. Friday Ventures LLC is not licensed by the state of Colorado to conduct testing nor is a licensed facilitator pursuant to article 170 of title 12.