

Land Planners
Landscape Architects
Urban Designers
Placemakers

Placemaking
for Better
Sustainable
Environments



Ways, Sites + Icons

Planning + Design

LOCAL PROJECTS
P R O F I L E
2 0 2 1 - 2 0 2 2

T +632.755.9042
M1 +63917.813.2363
M2 +63949.364.2132
E tap.greenedge@gmail.com
W www.greenedgesdesign.net

ABOUT US
SERVICES
PROJECTS

What We Do

PLACEMAKING
SITE + LAND PLANNING
LANDSCAPE ARCHITECTURE
URBAN DESIGN
PERMACULTURE
ENVIRONMENTAL ART

leisure + hospitality
 campuses
 townships
 nature + farm resorts
 historic conservation
 public realm
 resource conservation



GREENEDGE
 Ways, Places + Icons
 SITE + LAND PLANNING
 LANDSCAPE ARCHITECTURE
 URBAN DESIGN
 PERMACULTURE
 ENVIRONMENTAL ART
 PLACEMAKING

Land Planners

Landscape Architects

Placemakers

Our Ethos



Even before LEED went fad and green got gold, practical experience spanning 35 years, underpinned by our interdisciplinary outlook and an overarching mesh with sustainable design has driven our work.

Our hands-on experience in both the humid and arid tropics brings together the synergies of resource conservation, a rich understanding of various cultural and historical contexts, urban-rural dynamics and code-compliance.

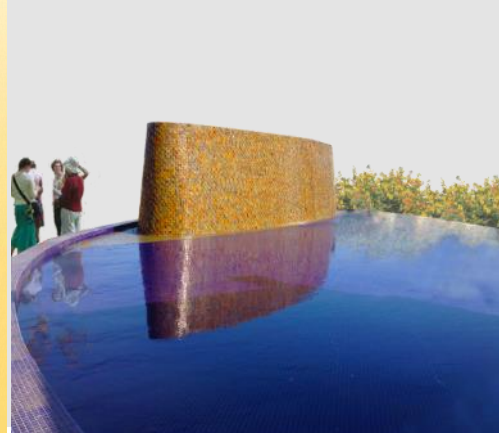
Over this, we fold in the client's corporate branding and market positioning that include upscale, iconic projects within sensitive environmental concerns.

Folio of Projects

For a downloadable full brochure of our projects folio, visit www.greenedgedesign.net



Placemaking for Better Sustainable Environments



Placemaking for Better Sustainable Environments

T +632.755.9042
 M1 +63917.813.2363
 M2 +63949.364.2132
 E tap.greenedge@gmail.com
 W www.greenedgedesign.net

What We Do

Engagements

Placemaking for Better Sustainable Environments

Site + Land Planning

In collaboration with other planning and A+E consultants, we formulate site masterplans for **townships, neighborhoods and special districts** defining land uses, circulation and **green infrastructure** including open spaces, conservation areas and scenic resources

Landscape Architecture

Full-service total-process landscape architecture services from concept to tender documents stage, **Construction supervision** and **Post-construction assistance**

Specialized services include consultations for site selection, **signage and wayfinding, green roofs and vertical greenwalls** among others

Urban Design

Bridging landscape architecture and urban planning, shaping of urban form elements, circulation, and patterns in the public realm, roadways and civic space through policy and design,

Scoping of unified urban site furniture elements

Permaculture

Specialist land and site planning for agroforestry schemes and mixed-use farm resorts bringing together the **synergies of soils science, cropping technologies, water resources management, agricultural engineering, forestry, landscape architecture and tourism planning**

Environmental Art

Empower places with distinctive landmarks that are works of **landscape art**, combining planting, groundshaping, landscape lighting, water effects and one-of-a-kind sculptures that capture a project's **branding signature**

Plan + Design Reviews

Third-party independent reviews of other planning and landscape consultants' work to ensure these meet the Client's objectives, branding, and to ensure work is **complete, buildable, code-compliant and sustainable**

Supporting the firm's services are interdisciplinary resources from various disciplines.

Architecture
Geomatics
Civil Engineering
Graphics Design
Environmental Planning
Financial Analysis
+ Planning

BERDE [Building for Ecologically Responsive Design Excellence]

Work shown in this Folio illustrate the range of the Principals' experience having been either engaged or professionally involved in the projects.





About Us

Principals

Principals' Affiliations



Philippine Institute of Environmental Planners (PIEP), Manila



International Federation of Landscape Architects (IFLA), Geneva



Philippine Association of Landscape Architects (PALA), Manila



Building for Ecologically Responsible Design Excellence, Manila

Placemaking for Better Sustainable Environments

The Principals bring together more than 35 years of collective practical experience in a wide range of upscale high-end projects commissioned locally and overseas.

Work had long been grounded on sustainable design long before LEED went fad, demonstrating the planning and design philosophy behind the practice.

Cecilia Herras-Tence

MTLA | FPALA | MPAPRB
CEO, Managing Director

Adept at managing the design process from concept to tender stage, Cecile brings a proven practical experience in project controls to meet deliverables to Clients, while participating in the design direction of projects.

Her intense analytical, evaluative and coordination skills reach beyond design completion to construction supervision.

Marianne Balbuena

MPALA | CBP
Studio + Technical Director

Overseeing the design documentation of projects under a common CAD platform, Marianne's design and presentation skills comes with practical know-how on buildability gained from construction supervision. Her signature work is evident in the built grounds for a long-running TV reality show : Pinoy Big Brother.

Rick A Hilario II

MSc | MPIEP | FPALA
Chair, Technical Services

Rick brings in a rich, interdisciplinary experience in the planning and design of iconic spaces well grounded on the principles of sustainability. Familiar with branding and complex coordination needed by prime property developers, work engaged spans a wide range and depth of projects locally and overseas.

M +63917.813.2363
E csht.greenedge@gmail.com

M +63917.852.4479
E mmb.greenedge@gmail.com

M1 +974.5023.9835
M2 +63998.537.9734
E rah.greenedge@gmail.com



About Us

Principals

Principals' Affiliations



Philippine Institute of Environmental Planners (PIEP), Manila



International Federation of Landscape Architects (IFLA), Geneva



Philippine Association of Landscape Architects (PALA), Manila



Building for Ecologically Responsible Design Excellence, Manila

Placemaking for Better Sustainable Environments

Creative work in our design studios are managed under time-based project schedules, providing cost-effective, easy to maintain built work on the ground.

Work had long been grounded on sustainable design long before LEED went fad, demonstrating the planning and design philosophy behind the practice.

Christopher S Partolin III

MPALA | CBP
Studio + Technical Director

Christopher's design management outlook comes grounded from years of maintained client relations. Exposure on green products, technologies and services, and experience in landscape construction industry brings in practical insights and depth in how project design and documentation can work within client expectations.

M +63908.284.9550
E csp.greenedge@gmail.com

Ronaldo DC Traballo

CPA | MPICPA | CBP
Chief Financial Officer

With a track record of turning around his company that now has a regional presence in Southeast Asia, Ronald brings in a solid experience in **financial management and business strategy**. His years as a consulting **business life coach** is a rich resource of visionary market development, combined with practical experience as a **certified public accountant**.

M +63918.900.4379
E ronnie@bomanitesasia.com

Gracelyn A Arquisola

Director,
Business Development

Riding onto her **civil engineering** education, Grace's early launch as an entrepreneur in the site construction industry brings in her gift for **marketing and business operations**. Acting as lead for new and recurring business development, her capability for business networking is merged with the goals of the firm's Design Studios.

M1 +63917.703.0021
E grace_arquisola@yahoo.com



LOCAL PROJECTS

PLACEMAKING PROJECTS

SITE + LAND PLANNING
LANDSCAPE ARCHITECTURE
URBAN DESIGN
PERMACULTURE
ENVIRONMENTAL ART

OUR RANGE Ways, Sites + Icons

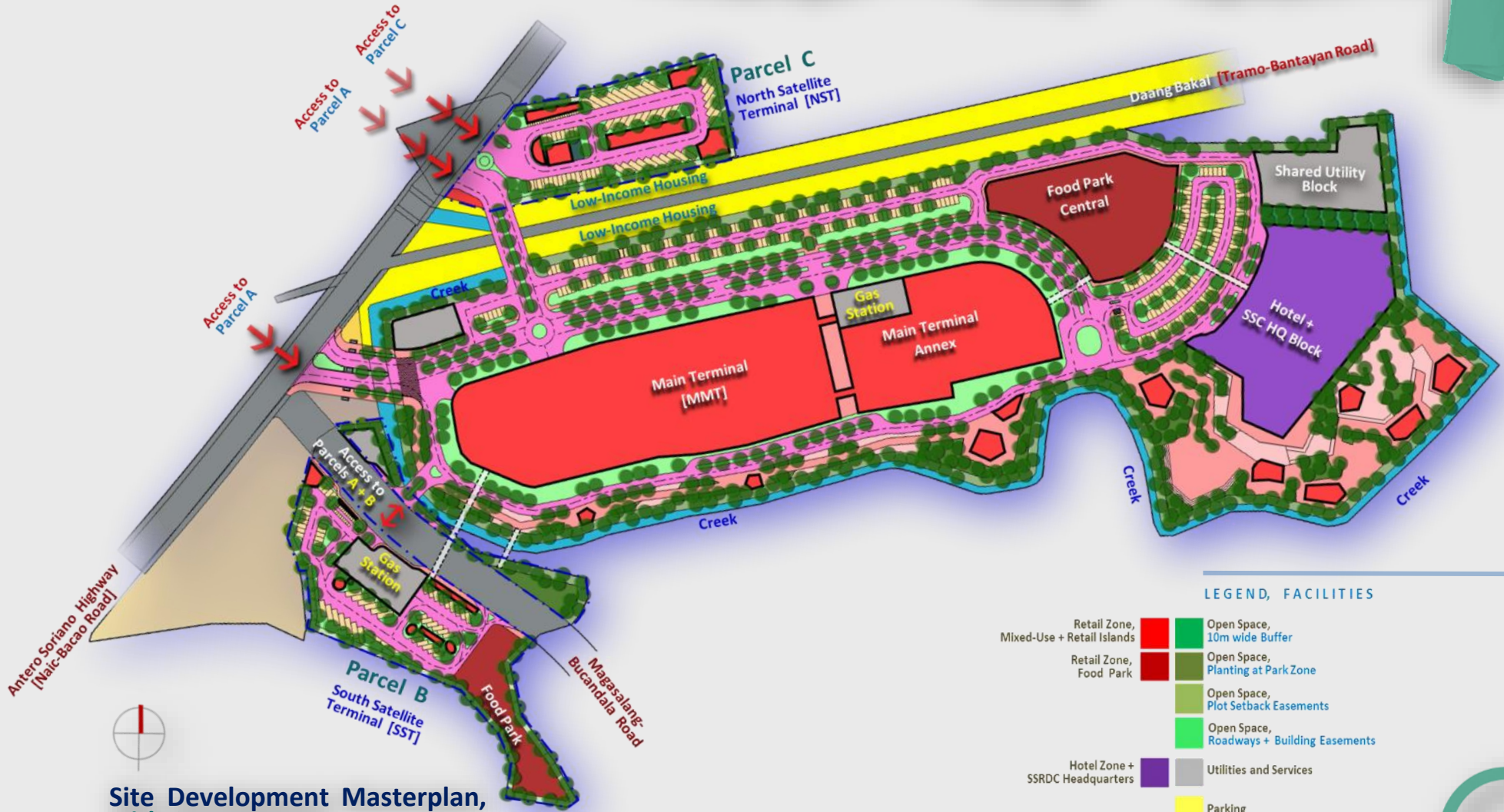
Local + International
Plot to Township Scale
Arid + Humid Tropics
Corporate, Government + Institutional
Planned Developments
Public Realm

Infrastructure Mixed-Use Transport Hub

Kawit City Cavite, Philippines

Planning

Land + Site Planning Mixed-Use Transport Hub



LEGEND, FACILITIES

- | | |
|---|---|
| Retail Zone, Mixed-Use + Retail Islands | Open Space, 10m wide Buffer |
| Retail Zone, Food Park | Open Space, Planting at Park Zone |
| | Open Space, Plot Setback Easements |
| | Open Space, Roadways + Building Easements |
| Hotel Zone + SSRDC Headquarters | Utilities and Services |
| | Parking |
| Creek | Roadways + Driveways |

Site Development Masterplan,
with Canopy Trees
Not to Scale



Planning

Land + Site Planning

Mixed-Use Transport Hub

Infrastructure

Mixed-Use Transport Hub

Kawit City Cavite, Philippines

Straddling some **11 hectares** of originally marshy terrain, the proposed development takes its locational advantage from its connectivity to the nearby **envisioned Sangley International Airport** gateway, the R1 Manila-Cavite Expressway and railway, and a link road looping south of Cavite province connecting to Laguna province at the South Luzon Expressway [SLEX]



buses, shuttle vans, jeeps, and tricycles service destinations of an inclusive riding public

Planning

Land + Site Planning Mixed-Use Transport Hub

North Satellite Terminal [NST]

Main Terminal

Daang Bakal Road

Don Antero Soriano Highway
[Naic-Bacao Road]

Magaslang-Bucandala Road

South Satellite Terminal [SST]

“

Alternative options for an entry statement incorporating access control, signage and wayfinding.

”



Planning

Land + Site Planning

Mixed-Use Transport Hub

Infrastructure

Mixed-Use Transport Hub

Trento Municipality Agusan del Sur, Philippines



Site Development Masterplan, with Canopy Trees

Not to Scale

Located in an **8-hectare** plot adjacent to commercial land uses, the **mixed-use integrated multi-modal transport hub** is key to meet this first-class municipality's growing connectivity to the rest of the province and beyond.

Planning

Land + Site Planning Green Infrastructure

Greenways, Timberland Heights

Montalban Rizal, Philippines



Land Use Planning

Driven by natural resource inventories of the entire **677-hectare** township, and in subsequently assessing its potentials, previous masterplans done by foreign consultants were re-evaluated and redone.

The reformulated masterplan **closely considered the nuances of geomorphology, water resources and other local conditions, cultural imperatives and emerging trends in sustainable living** among other influencing factors.

The first effort in assisting the developers regain its sustainability standing with the Department of Natural Resources and Environment [DENR] and to counter environmental militantism, was to draw up a **conservation plan** for greenways and related slope stabilization for formal adoption as non-negotiable items in a **medium-term Development Action Plan**.



Greenways, Timberland Heights

Montalban Rizal, Philippines

Slope Stabilization, Erosion Mitigation

Successful securing of an environmental compliance certificate was the result of a **Mitigation Plan** put on the ground to counter serious erosion control and slope failure caused by unauthorized earth-moving for a signature 36-hole golfcourse project that was abandoned.

Several seasons of rehabilitation resulted in better protection of waterways that were key assets for the greenways network *[plan in right]*.

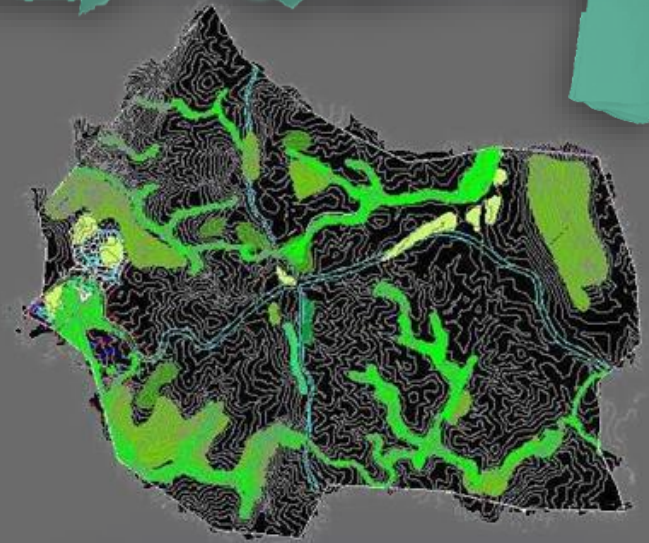
Planning

Vegetative + Built Controls

A creative mix of vegetative and hard engineering controls were designed as a means of storm-water management. Local community labor was organized for implementing the rehabilitation, under the developer's technical supervision of the Mitigation Plan.

A non-negotiable policy for a greenways network permanently protected from development was Also key to securing environmental compliance.

Land + Site Planning Green Infrastructure



Green Infrastructure Network



vetiver fascines



gabion walls with
bench terracing



water bars
with tree
rows

Greenways, Timberland Heights

Montalban Rizal, Philippines

Mitigating Negative Impacts

A medium-term **Mitigation Plan** put on the ground to counter serious erosion control and slope failure caused by a water-wasting championship golfcourse had to be abandoned in lieu of a **credible reforestation and rehabilitation scheme**.

Planning

The Problem

Serious slope failure and soil erosion caused by poor earthmoving for a championship golfcourse had negative impacts on water quality downstream, raising **environmental militancy** in affected communities.

Land + Site Planning Environmental Mitigation Plan



Realizing Profitable Real Estate Yields

The resulting lifting of the development ban allowed opening up new areas for enclave developments [images above], and realizing unprecedented yields in **land sales and appreciating land values** for the estate.

Scenic View Lots



Scenic Views as a Premium

Difficult topography was folded into the yield portfolio by conceptualizing these as **scenic lots** owing to their lot cuts and orientation to local and the broader scenic view.

Nature Trails Timberland Heights

Montalban Rizal, Philippines

Adventure Bike and Hike Trail System

In promoting the estate as a leisure destination, a stable policy to encourage nature-oriented **shared biking and hiking along its designated greenways and open spaces** was recommended. This required the opening up and upkeep of low-impact **tamped earth trails**.



Policy Plan



Land + Site Planning Leisure + Recreation



Scenic Views, Challenging Terrain

This recreation policy, riding on the assets of unsurpassed topography and scenic resources, have made the estate a **nature-oriented destination** as it is now, within easy reach of Metro Manila.



Planning

Land + Site Planning Master Planning

Masterplan, Blueridge Mountain

Baguio City - La Trinidad, Benguet Philippines

Phases 1 + 2, Yield Analysis

Straddling part of a 54-hectare highland estate, Phases 1 + 2 were first prioritized. Based on slope analysis, **yield of saleable land** [scenic lots] was arrived at while protecting sensitive slopes.

Difficult topography was folded into a **green infrastructure** asset base of parks and open spaces, through which hiking and bicycle trails meander.

Actual trail alignments were adjusted in the detailed design and during construction supervision to account for existing trees which need some 'groundtruth' and judgment on whether to be retained onsite or removed.



Design

Historic Building, The **Ayuntamiento de Manila**

Intramuros

Manila, Philippines

Urban Design Historic Restoration



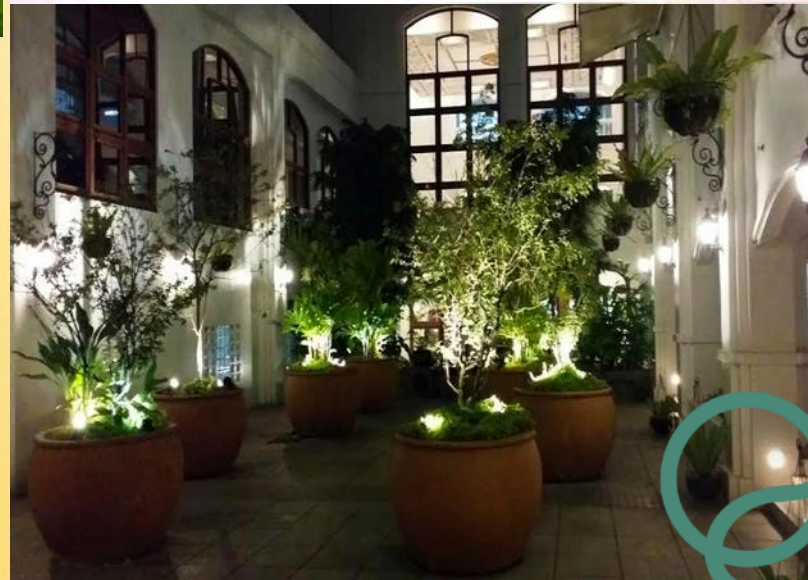
Adaptive Reuse

Formerly the Spanish Governor General's official residence [Casas Consistoriales], this historic building is now headquarters to the **Bureau of Treasury** and has become a mainstay urban tourist attraction. Completed in 2013, reconstruction was based on research on period architecture and hardscape materials for interiors and exteriors.



Old **granite paving flags**, once used as Chinese junk ballast, as found in the nearby plaza fronting the Manila Cathedral, were used to continue this historic linkage in the paving design for the project.

The lower basement with containerized hydroculture planting [right] and lighting was a **modern interpretation** to liven up the otherwise drab and formal space.



Design

Landscape Architecture Mixed-Use Development

6-Tower Mixed-Use Highrise ILand Towers

Paranaque

Metromanila, Philippines



The development is predominantly residential high-rises, with mixed-use retail zones close to the main road.

The project aims for **LEED Certification**, with the landscape design contributing to a number of sustainability points in the areas of **efficient water use, biodiversity and use of adapted or indigenous species, onsite water capture for landscape irrigation** and **perVIOUS paving**, among others.



Design

Landscape Architecture Mixed-Use Development

6-Tower Mixed-Use Highrise I Land Towers

Paranaque Metromanila, Philippines



Outdoor Rooms as Sanctuary Spaces

Given the plot's high built-up footprint, niches and corners were designed as zones of calm and quiet as **meditative gardens**.

Massing of trees, understorey planting and wall enclosures all conspire to deliberately create a sense of **'outdoor rooms'** that have the distinct feel of **pocket sanctuaries**.



6-Tower Mixed-Use Highrise Iland Towers

Paranaque Metromanila, Philippines

Design

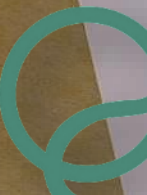
Landscape Architecture
Mixed-Use Development



Ergonomic Indoor Courtyards

For unobstructed foot traffic, aerodynamic **raised planters** support indoor planting using **hydroculture systems**. The raised planters double up as **seatwalls**, integrating with the paving design.

The aerodynamic shapes are **ergonomic**, allowing safe and snag-free pass-throughs.



Public Realm

Local Government Center

Trento Municipality Agusan del Sur, Philippines

The existing local government center was re-imaged with a **better site circulation** and a **bold legible site character** befitting a civic space. Additional parking was incorporated.

A **green infrastructure** of canopy trees and open spaces was wrapped around the various facilities.



Proposed Facilities
Existing Facilities



Design

Landscape Architecture

Civic Space

Public Realm

Public Park

Trento Municipality Agusan del Sur, Philippines

The site design transforms this otherwise idle space into a **green asset** that engages the public with a variety of leisure opportunities that add to the municipality's **green infrastructure**. Low-flow, low-volume water features announce entry into the park at one end and provide public interaction at the other.



Site Development Masterplan,
with Canopy Trees

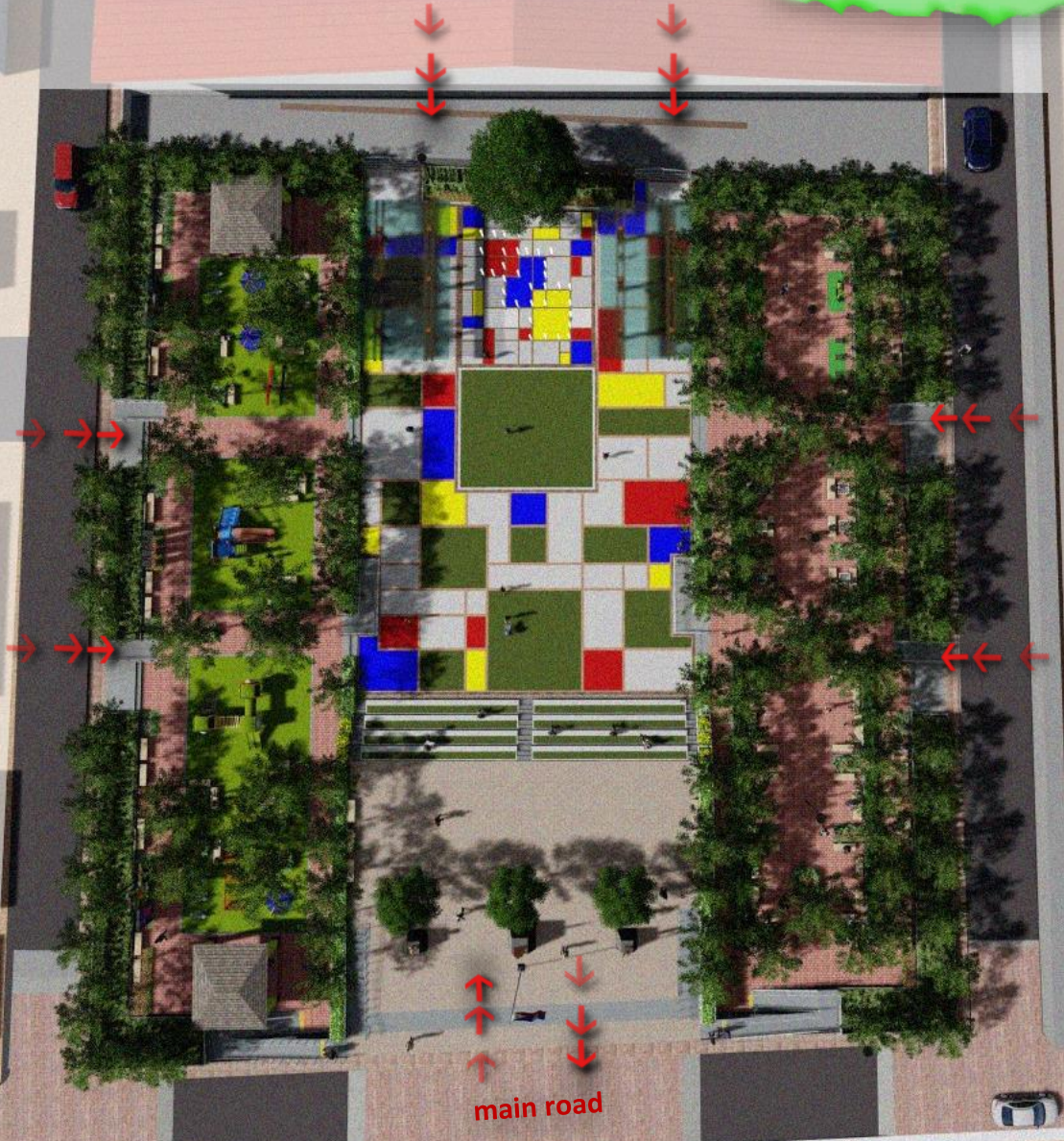
Not to Scale



Design

Public Realm, Public Plaza

Lapulapu City Cebu, Philippines



Landscape Architecture Civic Space

Conceived with the **tricolor** of the Philippine flag as its inspiration, the modular paving pattern boldly mirrors this tricolor theme. This **multi-level plaza** was re-imagined to creatively take advantage of existing grade changes.

Located directly across the municipal hall in a central location in the city's central business district [CBD], more **shaded seating** opportunities were designed into this civic space within a unified theme.



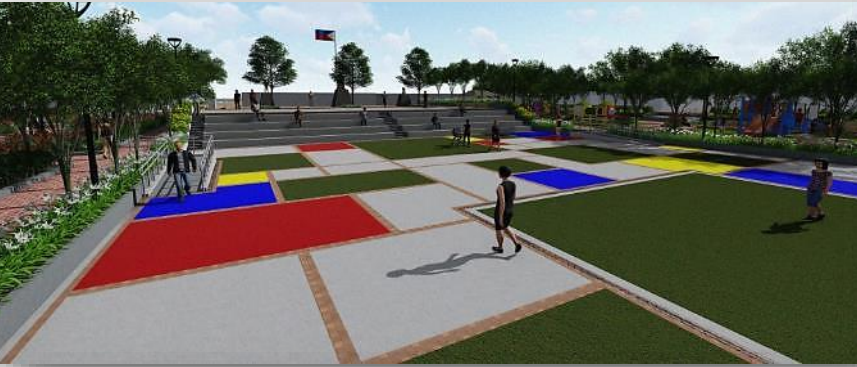
Site Development Masterplan,
with Canopy Trees

Not to Scale



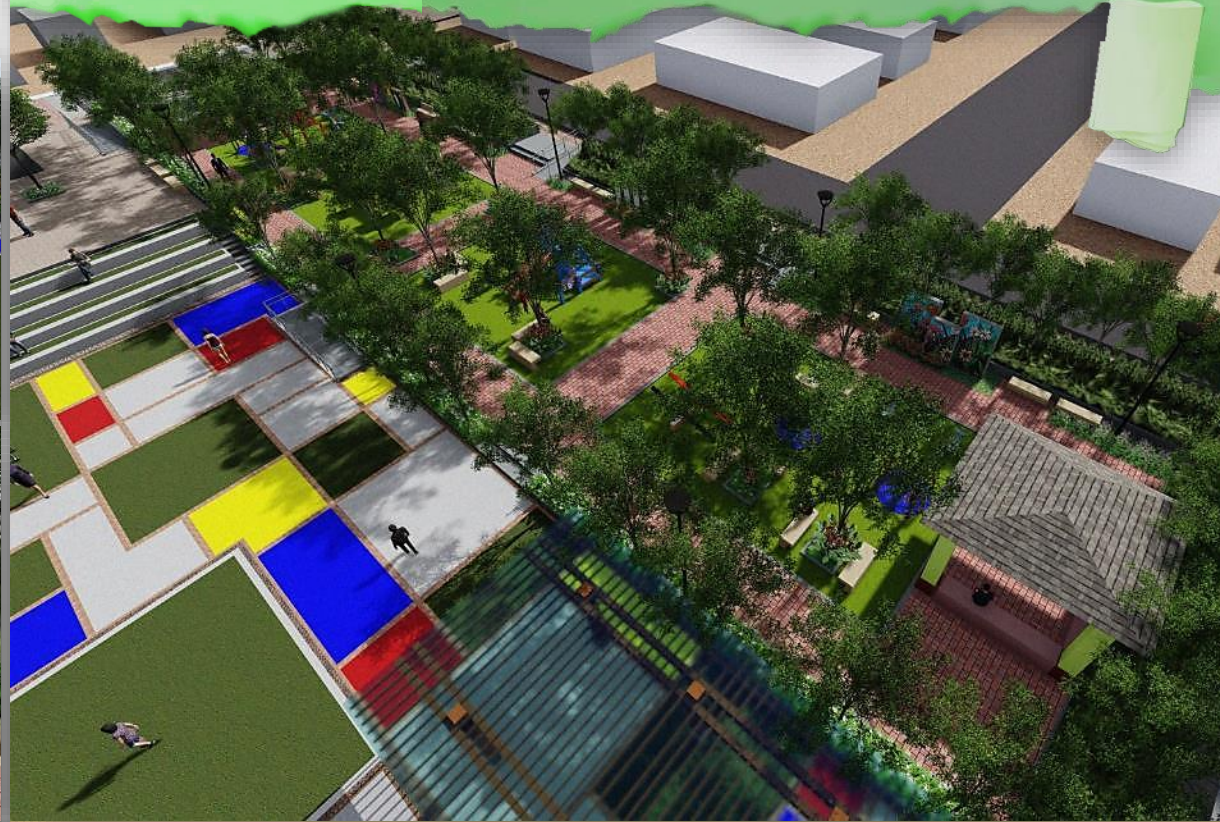
Public Realm Public Plaza

Lapulapu City Cebu, Philippines



Design

Landscape Architecture Civic Space



The plaza's re-imagining takes on the feel of a **large events space**, with enough niches of privacy for group users.



Design

Public Realm, Promenade Park
Phase 1 : Park + Monument
Lapulapu City Cebu, Philippines

Landscape Architecture Civic Space at Waterfront



The existing pocket park is transformed into a **contemporary space, preserving the large existing trees**



Public Realm, Promenade Park
Phase 1 : Park + Monument
Lapulapu City Cebu, Philippines

Design

Landscape Architecture
Civic Space at Waterfront



gabion walls disappear at the water's edge depending on the tides against the backdrop of the WW2 liberation monument is retained for its historic value



The existing concrete pier is merged with a proposed **boardwalk extension** that extends promenading opportunities and access to waterfront views.

Public Realm, Promenade Park
Phase 2, Retail Zone
Lapulapu City Cebu, Philippines

Design

Landscape Architecture
Civic Space at Waterfront



a planned 24/7 retail zone for al fresco dining and 'pasalubong' treats
Replaces the random informal sector retail stalls along the beachfront



al fresco dining provides a platform for **unobstructed views** of the waterfront.



Public Realm, Promenade Park Phase 3 : Boardwalk Extension

Lapulapu City
Cebu, Philippines

Design

Landscape Architecture Civic Space at Waterfront



shaded and open seating opportunities line the boardwalk extension to reinforce enjoyment of the scenic views of the open waters.



Public Realm

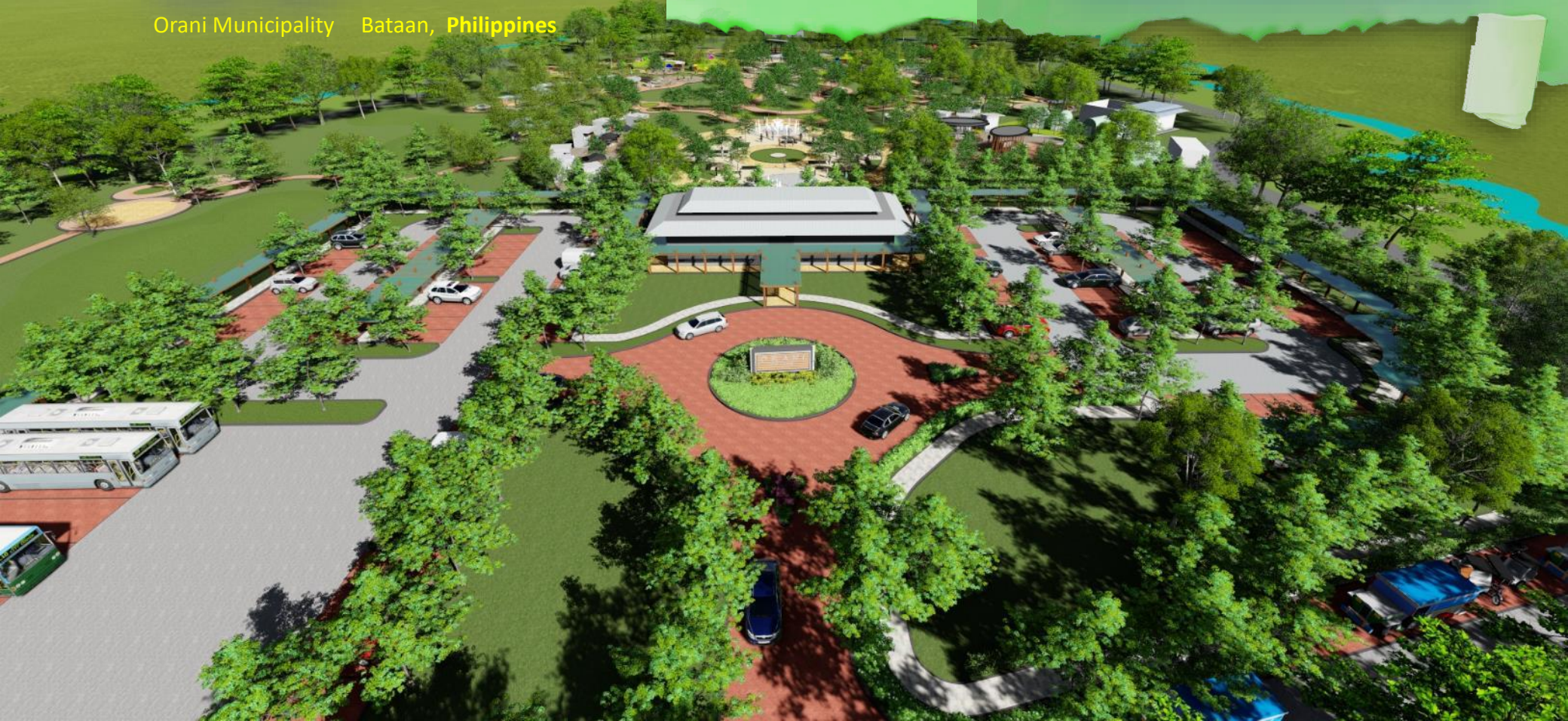
Public Park

Orani Municipality Bataan, Philippines

Design

Landscape Architecture

Sanitary Landfill Conversion



Formerly a **sanitary landfill** that had reached the end of its useful life, the 7-hectare facility bounded by creeks is being transformed into a **multi-purpose recreational facility** to add to the municipality's lack of recreational spaces and green assets.

Public Realm Public Park

Orani Municipality Bataan, Philippines

Design

Landscape Architecture Sanitary Landfill Conversion



Camp and picnic grounds, nature trails, bike tracks, a central amphitheatre, interactive water features, demonstration greenhouses and a Visitor Center with a café and bistro are among the park's facilities meant to pull in local and out-of-town visitors. Age-segregated playspaces also make the park a family destination, ensuring safe play for children.



Public Realm, Public Park Millenium Park

Lapulapu City Cebu, Philippines

Design

Landscape Architecture Civic Space at Waterfront



Site Development Programme

- 1 PARKING AREA
- 2 PUBLIC PAY TOILET
- 3 FITNESS STATION
- 4 MONUMENT
- 5 AMPHITHEATER STAGE
- 6A AMPHITHEATER STEP SEATS
- 6B STEP SEATS TO BOARDWALK
- 7 BOARDWALK
- 8 MULTIPURPOSE GREEN
- 9 PLANTING BUFFER
- 10 BENCH TABLES WITH A VIEW
- 11 BRIDGE COLUMN

Nestled under the expressway bridge connecting mainland Lapulapu to Mactan Island, this pocket park’s envisioned transformation calls for a contemporary civic space along the waterfront. A proposed boardwalk overhangs the water’s edge to extend access to enjoyment of the scenic resources of the open waters and the Mactan Island skyline.



Site Development Masterplan,
with Canopy Trees
Not to Scale



Public Realm, Public Park Millenium Park

Lapulapu City Cebu, Philippines

Design

Landscape Architecture Civic Space at Waterfront



Stepseating from a terraced platform provides unobstructed views of the open water.

Design

Landscape Architecture
Media Entertainment

TV Set, Reality Show
Pinoy Big Brother House

Quezon City Metromnila, Philippines



Set Design

The permanent set's landscape design called for a photogenic outdoor make-over for this popular **reality TV show** run by the country's leading TV network.



Design

Landscape Architecture Public Realm

Civic Center The Capitol Plaza, Agusan del Sur, Philippines

This ceremonial space at the **provincial capitol** in Palin-ay backdrops the iconic Rizal monument with a lotus pond.

The paving design is inspired by the **statistical histogram**



an interactive water feature engages promenaders in this inclusive **barrier-free** space that is **ADA-compliant**.



Design

Landscape Architecture Public Realm

Courtyard The Capitol Plaza, Agusan del Sur, Philippines

Shaded bespoke seating, morphed with berms provide an inviting clutter-free space.



Nested among the buildings, the **courtyard** serves as a welcome statement and amenity break-out space for visitors and workers. Covered pathways provide **all-weather connection** to buildings.

The traditional colorful **ikat weave** fabric patterns of Mindanao's indigenous lumad peoples has been the inspiration behind the paving pattern.



Design

Landscape Architecture Public Realm

Civic Plaza Bayugan City Agusan del Sur, Philippines

Under construction, this civic plaza joins Agusan's inventory of contemporary urban **green infrastructure**.



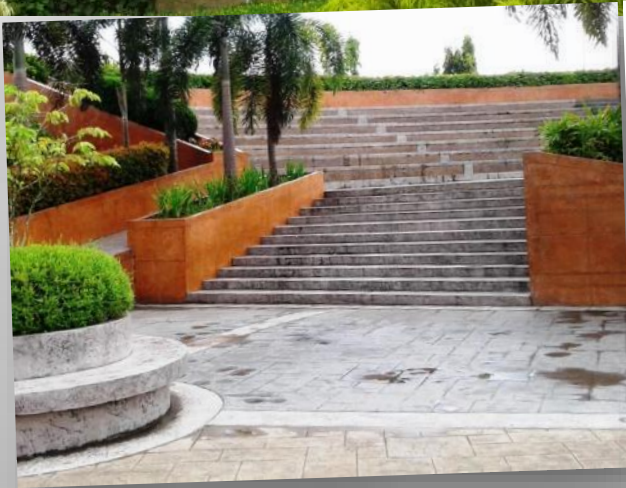
A simple dry interactive water feature reinforces the clutter-free **urban elegance** while conserving water.



Design

Landscape Architecture Public Realm

The **Rotunda**, **Bayugan** City
Agusan del Sur, Philippines



An events destination for locals, this facility's park and amphitheatre fills a niche for laid-back **small-city leisure and tourism adjacent to a retail zone.**



Design

Landscape Architecture Gated Community, Public Realm



Streetscape + Open Spaces, Blueridge Mountain

Baguio City - La Trinidad, Benguet Philippines

Phase 1, La Trinidad
Phase 2, Baguio City

Site Development Programme

- 1 View Tower
- 2 Terraced Picnic Area/ Camp Site
- 3 Look-Out View Deck
- 4a Eastern Trail
- 4b Western Trail (Nature Trek)
- 5 Multi-Purpose Alley
- 6 Protection Zones
- 7 Water Feature
- 8 Plank Bridge
- 9 Materials Recovery Facility
- 10 Village Square (Commercial Area)
- 11 Sports Amenities/ Playing Courts
- 12 Amphiteater
- 13 Infinity Pool
- 14 Recreational Hall
- 15 Entrance/ Exit Gate



Amenities

Nature-oriented recreation had been the focus for this highland gated community, returning to the environment the multiple **ecological services** the green infrastructure provides.



main access by link bridge →



Design

Landscape Architecture Leisure + Hospitality

4-Star Hotel, **Munting Paraiso**

Dauin **Negros Oriental**, Philippines

Water Features

Designed in fusion **Filipiniana-Asian** style, the water features are better experienced with a boardwalk, providing a **lush tropical** visual amenity from hotel's ground and upper levels.



Resonating with the water feature, a **runnel cuts through the walkway**, providing a **visual and functional linkage** to the lines of the water feature.

Wall-mount planters at the façade soften up the architecture.



Design

Landscape Architecture Leisure + Hospitality

4-Star Hotel, **Munting Paraiso**

Dauin **Negros Oriental**, Philippines

Pooldeck

An **infinity pool** looks out to commanding views of the seafront, featuring lounging coves and laplanes.

Completing the leisure experience is a **jacuzzi** at a quiet corner of the deck.



The pools are finished in the rich tones of random-cut local **piedra de ojas**, a finish rare in locally built pools.



Design

Landscape Architecture Leisure + Hospitality

4-Star Hotel, **Munting Paraiso**

Dauin **Negros Oriental**, Philippines

Pooldeck + Mural

The azure pool contrasts with and is framed to one end with a mural finished in local random-cut stone, with a **water cascade** populated with a triad of terra cotta interpretations by award-winning artist Cristina Sollesta-Taniguchi of local archaeological finds.



A carefully selected plant palette of **lush tropical planting ensures year-round perennial floral displays** that lend a festive ambience around the pooldeck.

Elsewhere are patches of variably textured planting that enliven and animate spaces around and in between buildings.



5-Star Hotel, Pullman Hotel + Casino

Clark Freeport Zone
[CFZ]
Pampanga,
Philippines



Design

Landscape Architecture Leisure + Hospitality



The project is a LEED-certified integrated mixed-used entertainment development in which majority of existing trees had been conserved by folding these into the planting design.



Site Development Masterplan,
with Canopy Trees
Not to Scale



Design

Landscape Architecture Leisure + Hospitality

5-Star Hotel, Pullman Hotel + Casino

Clark Freeport Zone [CFZ]
Pampanga, Philippines

The **pool facilities**, as centerpiece, meet specific requirements of the hotel operator. The adult pool's **laplanes, pool bar** and a segregated **kiddie pool** are supported by **changing rooms, outdoor showers** and a **waiter's station**.



simulated nightviews of the pool with a 'starfield effect' enhance the night time drama



5-Star Hotel, Pullman Hotel + Casino

Clark Freeport Zone [CFZ]
Pampanga, Philippines

Design

Landscape Architecture
Leisure + Hospitality



Casino Entrance

water features, paving design
and shade structures boldly
announce the entry, creating a
strong **sense of welcome and arrival**

Amphitheatre

Apart from its recreational value as an events and break-out place, this space doubles up also as a seasonal **stormwater impoundment** for added sustainability.



5-Star Hotel, Ibis Hotel

Clark Freeport Zone [CFZ]
Pampanga, Philippines



Design

Landscape Architecture Leisure + Hospitality



J P Laurel Avenue

The project is a LEED-certified integrated mixed-used entertainment development in which majority of existing trees had been conserved by folding these into the planting design.



Site Development Masterplan,
with Canopy Trees
Not to Scale



5-Star Hotel, Ibis Hotel

Clark Freeport Zone [CFZ]

Pampanga, Philippines

Design

Landscape Architecture

Leisure + Hospitality



As with its other companion hotel within the same development, the **pool facilities** likewise are the centerpiece of this resort's amenity.

Existing trees were likewise conserved by creatively folding these into the planting design.



5-Star Hotel, Ibis Hotel

Clark Freeport Zone [CFZ]
Pampanga, Philippines



Fitness Trail from Pooldeck

A fitness trail loops out and back into the pooldeck as an added amenity. The trail is designed **with dips and rises** to be kinetically engaging.



Design

Landscape Architecture

Leisure + Hospitality



Design

Landscape Architecture Leisure + Hospitality

Gourmet Restaurant, Lemuria Gardens

Horseshoe Village Quezon City, Philippines

Landscape Enhancement

Already operating as a winery, this old home was repurposed into a Mediterranean-style gourmet restaurant and small-events venue. The existing courtyards were given a bolder but intimate Old-World feel as **'outdoor rooms'**.



The recommended suspended **trellis design** [left] to support cascading vines was executed to better define the dining space.

Design

Landscape Architecture Leisure + Hospitality

Ecotourism Resort, **Tinuy-An**

Bislig City Surigao del Sur, Philippines

Adventure Rides

Capitalizing on this grand white-curtain falls, the planned ecoresort platforms to a variety of adventure rides : **whitewater rafting, kayaking, and a zipline** across the falls' 95m span, the widest in the country. **Cottages** tucked into the surrounding rainforest offer basic safari-style over-night stays.

The falls' **three [3] cataracts** drop some 55 meters and offer a multi-level clambering experience



Design

Landscape Architecture Leisure + Hospitality

3-Star Hotel, The Oasis

Butuan City Agusan del Norte, Philippines

Pooldeck : Al Fresco Dining

Serviced from the all-day dining, an **al fresco pooldeck dining** is to one edge of the pool.

From the hotel, the pooldeck is announced through a portal of **feature walls**.



Portal

Al Fresco Dining

Announcing entry into the pooldeck is a bold statement of stone-clad **feature walls** that incorporate a low-flow **waterwall effect**.



Design

Landscape Architecture Leisure + Hospitality

3-Star Hotel, The Oasis

Butuan City Agusan del Norte, Philippines

Pooldeck : Adult, Kiddie Pools

Fitted with a pooldeck for generous lounge seating, the main pool is **split-level** and features **niches and coves** for small-group in-water lounging. Adjacent is a shallow kiddie pool.

For maximum opportunity, a **poolbench** runs the entire long side of the adult pool.



Presently under construction, this local home-grown hotel brand is positioning largely for the local tourism market, with the landscape design supporting the client's branding requirements.

Design

Landscape Architecture Leisure + Hospitality

3-Star Hotel, **Pulsar**

Tuguegarao City Cagayan, Philippines

Pooldeck with Pool Bar

A boldy **shaded pool bar** juts out into the adult pool, and easily services the nearby **kiddie pool** and **jacuzzi**. A **sunning ledge** is at one end while laplanes are at the opposite end.



A central boardwalk cuts a visually bold, main access to the pooldeck, gliding by the shaded poolbar. The pool itself with its coves and sunning ledges offer a variety of wet leisure for all age groups.



Design

Landscape Architecture Leisure + Hospitality

3-Star Hotel, **Pulsar**

Tuguegarao City

Cagayan, Philippines

Playspaces

A children's playspace fitted with contemporary highly **kinetic play equipment** is tucked to one corner of the grounds, ensuring that noise intrudes far less into the premises.



A **multipurpose green** that serves a natural area for children to loiter and as an informal **kickabout** adds to the total play environment.



Bed-and-Breakfast, Balai Tawhay

Sinagpa, Boracay Malay, Aklan Philippines

Boutique Bahay-na-Bato Lodge

Secluded some 150 meters away from the island's white-sand party strip and perched on higher ground, this boutique lodge boasts the original home-grown 'Tawhay' brand.

A palette of suitable planting had to be customized due to the difficult alkaline, coralline soil that had to be modified with biocomposting.

Design



Landscape Architecture Leisure + Hospitality



The lodge now operates under the Sheridan Tawhay since its acquisition.



Design

Landscape Architecture Leisure + Hospitality

Bed-and-Breakfast, Balai Tawhay

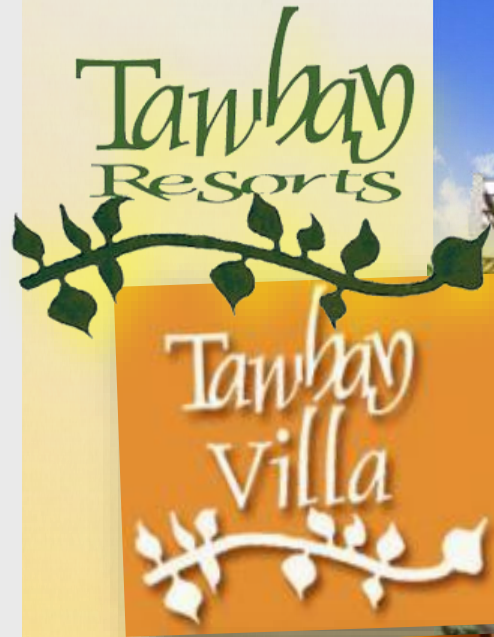
Sinagpa, Boracay Malay, Aklan Philippines

Signage Graphics Design

On request, **brand signage graphics** design was also provided for the project.

Surface Finishes

Practical durable finishes were designed into this unpretentious project, including decorative replica bespoke cut-out panels below windows *[far left below]*.



Design

Landscape Architecture Leisure + Hospitality

Condotel Resort, Aqua

Bulabog, Boracay Malay, Aklan Philippines

A number of alternative landscape plan layouts were iterated, focused primarily on the **pooldeck configuration, its levels and pedestrian circulation** between buildings.

The no-build zone at the waterfront had likewise to be creatively folded into the beach experience, retaining the existing coconut groves.



Dune stabilization schemes were also recommended, with a preference for **vetiver planting** to blunt the occasional storm surges that have historically damaged the island's western seaboard.



Concept Plan
Alternative

Design

Resort Hotel, 7 Stones

Bulabog, Boracay Malay, Aklan Philippines

A central pool courtyard, bounded by multi-level rooms, is the focal recreation space that opens up to the beach.

A contemporary poolbar with wet seating had been designed into this narrow linear pool at one end.

The upper level rooms offer balcony and roofdeck views of the waterfront.



Salt and wind-tolerant planting was kept as simple as possible, softening up the hard edges of the building envelope.



Design

Landscape Architecture Gated Community

Clubhouse, Susana Heights
Muntinlupa Metromanila, Philippines

Pooldeck

One of several pools and pooldeck designs for **upscale gated communities**, this one is perched on a rise along a slope, taking advantage of a grove of mango trees as backdrop.

This one allows idle pool lounging near a pooldeck bar while **lapping lanes** for more active swimming are at the far edge.



Design

Landscape Architecture Leisure + Recreation



The High Walk

A canopy walk across the stream was a high point of the trail experience, passing through groves of trees preserved for this purpose.

Gated Community, Ayala Greenfields Estate [AGE]

Calamba

Laguna, Philippines

Adventure Trail System

The attraction of home ownership was premised on our findings that **40% of lot buyers that time bought into projects for greenery that could be viewed**, and not because of access to golfcourse play.

Each homelot was designed **not to be more than 15 minutes** away from a **viewdeck portal** that accessed the trail system along the stream.



Design

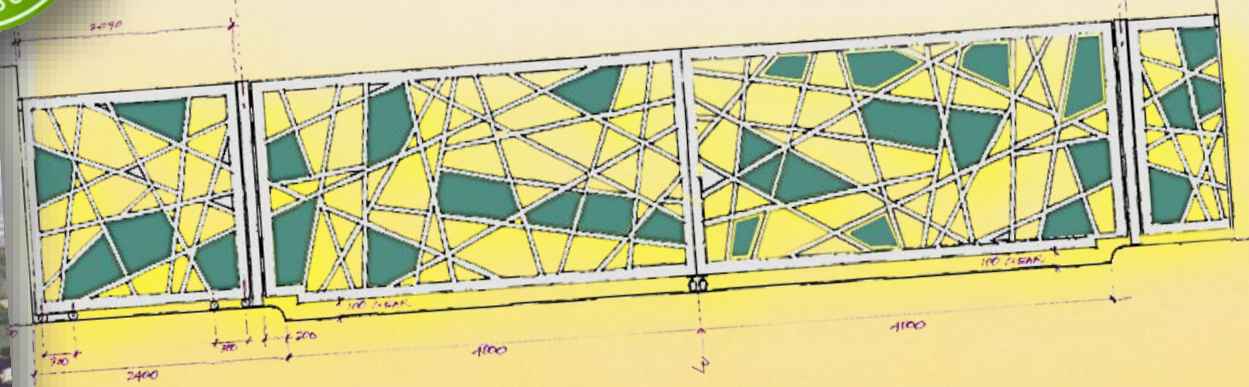
Landscape Architecture Office Development

Office Building CEPALCO Green Administration

Cagayan de Oro Misamis Oriental, Philippines

Green-Certified Building

This Administration Center for the local power and lighting utility service provider relied on the use of local materials for its landscape development.



Gate and Fence Design

Part of the original intent for the gate design was to incorporate recycled photovoltaic solar panels as **infill inserts**.



Design

Landscape Architecture Residential Highrise

Residential Towers, The **Columns**

Makati City Metromanila, Philippines

The landscape design connects the three residential towers thru a shared podium. Being situated in a bustling urban environment, privacy was maximized through lush greening.



Pools at several sky garden levels were designed for edgeless views out into the metropolis' skyline.



Village Church, Our Lady of Beautiful Love

Merville, Paranaque Metromanila, Philippines

Design

Landscape Architecture Institutional



The church grounds incorporate quiet, secluded **meditative gardens** that provide welcome relief from the urban bustle. The rich layering of vegetation of massed tree canopies and understory planting muffle out noise while providing shaded seclusion.



Design

Environmental Art Garden Art

4-Star Hotel, **Munting Paraiso**
Dauin Negros Oriental, Philippines

One-of-a-Kind Garden Art

Improvised with local materials, these custom-designed symbolic art pieces are rightfully ensconced along the covered walk in Asian-style niches with plinths finished in **pedra de ojas**.

The **Earth Goddess**



Artfully accentuated with nightlighting, this piece [*far left*] is a contemporary interpretation of the universal **mother goddess**, somewhat reminiscent of the '**bulol**' bowl-in-hand [*left*] style of totem sculpture by the indigenous Cordillera highland peoples of northern Luzon.

While most bulol Cordillera totems are dominantly male, this feminine interpretation recalls the dominant **matrist** societies of deep-time paleolithic cultures.



Design

Environmental Art Art Wall

Mural, Taniguchi's Art Gallery

Dumaguete City Negros Oriental, Philippines

Zodiac Bas-Relief

Improvised with local materials, these stylized Asian-style zodiac bas-relief slabs are set in a stark mural finished in hand-picked warm tones of rounded river cobble. The wall art gradually reveals itself walking by the covered porticoes.



Setting the tone for the gallery's main artistic collections, the wall art is framed amid a carefully selected plant palette of **lush, but not overpowering tropical landscaping**, reinforcing the zen character of the garden.

Alongside this mural, the covered porticoes were designed as an all-weather link from parking to gallery, executed in a matching contemporary Asian style.



Design

Environmental Art Water Features

Water Art , 4-Star Hotel

Dumaguete Negros Occidental , Philippines

Water Terraces

Wrapped along room balconies, emerald-green **water terraces designed with infinity edges** drop into a series of pools. Bird sculptures in various flight postures populate this water world alongside aquatic plants.



The lower pond deck *[left]* is traversed by intimate **boardwalk** rendered in a random linear paving pattern that emulates a stylized bamboo effect.

The lush understorey planting, with palms project the ambience of a riparian water-edge environment, as with the mangroves that are common along the Philippine island's coastline.



Placemaking
for Better
Sustainable
Environments

Land Planners
Landscape Architects
Urban Designers

Place
Makers

MANILA | DAVAO



Ways, Sites + Icons

HEAD OFFICE

26G Main Avenue
Cubao, Quezon City 1109
Metromanila, The Philippines

T +632.755.9042
M1 +63917.813.2363
M2 +63949.364.2132
E tap.greenedge@gmail.com
W www.greenedgedesign.net

GREENEDGE

BRANCH OFFICE

Unit 8 2F
SJRDC Building 2
Insular Village Phase 1
Lanang 8000, Davao City
The Philippines
M1 +63949.164.0065