

Land Planners
Landscape Architects
Urban Designers
Placemakers

Placemaking
for Better
Sustainable
Environments



Ways, Sites + Icons

OVERSEAS ENGAGEMENTS

Planning + Design

P R O F I L E

2021 - 2022

T +632.755.9042
M1 +63917.813.2363
M2 +63949.364.2132
E tap.greenedge@gmail.com
W www.greenedgesdesign.net

About Us
Services
Projects

What We Do

PLACEMAKING
SITE + LAND PLANNING
LANDSCAPE ARCHITECTURE
URBAN DESIGN
PERMACULTURE
ENVIRONMENTAL ART

leisure + hospitality
campuses
townships
nature + farm resorts
historic conservation
public realm
resource conservation



Land Planners

Landscape Architects

Placemakers

Our Ethos

Even before LEED went fad and green got gold, practical experience spanning 35 years, underpinned by our interdisciplinary outlook and an overarching mesh with sustainable design has driven our work.

Our hands-on experience in both the humid and arid tropics brings together the synergies of resource conservation, a rich understanding of various cultural and historical contexts, urban-rural dynamics and code-compliance.

Over this, we fold in the client's corporate branding and market positioning that include upscale, iconic projects within sensitive environmental concerns.

Folio of Projects

For a downloadable full brochure of our projects folio, visit

www.greenedgedesign.net



Placemaking for Better Sustainable Environments

T +632.755.9042
M1 +63917.813.2363
M2 +63949.364.2132
E tap.greenedge@gmail.com
W www.greenedgedesign.net

What We Do

Engagements

Placemaking for Better Sustainable Environments

Site + Land Planning

In collaboration with other planning and A+E consultants, we formulate site masterplans for **townships, neighborhoods and special districts** defining land uses, circulation and **green infrastructure** including open spaces, conservation areas and scenic resources

Landscape Architecture

Full-service total-process landscape architecture services from concept to tender documents stage, **Construction supervision** and **Post-construction assistance**

Specialized services include consultations for site selection, **signage and wayfinding, green roofs and vertical greenwalls** among others

Urban Design

Bridging landscape architecture and urban planning, shaping of urban form elements, circulation, and patterns in the public realm, roadways and civic space through policy and design,

Scoping of unified urban site furniture elements

Permaculture

Specialist land and site planning for agroforestry schemes and mixed-use farm resorts bringing together the **synergies of soils science, cropping technologies, water resources management, agricultural engineering, forestry, landscape architecture and tourism planning**

Environmental Art

Empower places with distinctive landmarks that are works of **landscape art**, combining planting, groundshaping, landscape lighting, water effects and one-of-a-kind sculptures that capture a project's **branding signature**

Plan + Design Reviews

Third-party independent reviews of other planning and landscape consultants' work to ensure these meet the Client's objectives, branding, and to ensure work is **complete, buildable, code-compliant and sustainable**

Supporting the firm's services are interdisciplinary resources from various disciplines.

Architecture
Geomatics
Civil Engineering
Graphics Design
Environmental Planning
Financial Analysis
+ Planning

BERDE [Building for Ecologically Responsive Design Excellence]

Work shown in this Folio illustrate the range of the Principals' experience having been either engaged or professionally involved in the projects.



About Us

Principals

Principals' Affiliations



Philippine Institute of Environmental Planners (PIEP), Manila



International Federation of Landscape Architects (IFLA), Geneva



Philippine Association of Landscape Architects (PALA), Manila



Building for Ecologically Responsible Design Excellence, Manila

Placemaking for Better Sustainable Environments

The Principals bring together more than 35 years of collective practical experience in a wide range of upscale high-end projects commissioned locally and overseas.

Work had long been grounded on sustainable design long before LEED went fad, demonstrating the planning and design philosophy behind the practice.

Cecilia Herras-Tence

MTLA | FPALA | MPAPRB
CEO, Managing Director

Adept at managing the design process from concept to tender stage, Cecile brings a proven practical experience in project controls to meet deliverables to Clients, while participating in the design direction of projects.

Her intense analytical, evaluative and coordination skills reach beyond design completion to construction supervision.

M +63917.813.2363
E csht.greenedge@gmail.com

Marianne Balbuena

MPALA | CBP
Studio + Technical Director

Overseeing the design documentation of projects under a common CAD platform, Marianne's design and presentation skills comes with practical know-how on buildability gained from construction supervision. Her signature work is evident in the built grounds for a long-running TV reality show : Pinoy Big Brother.

M +63917.852.4479
E mmb.greenedge@gmail.com

Rick A Hilario II

MSc | MPIEP | FPALA
Chair, Technical Services

Rick brings in a rich, interdisciplinary experience in the planning and design of iconic spaces well grounded on the principles of sustainability. Familiar with branding and complex coordination needed by prime property developers, work engaged spans a wide range and depth of projects locally and overseas.

M1 +974.5023.9835
M2 +63998.537.9734
E rah.greenedge@gmail.com



About Us

Principals

Principals' Affiliations



Philippine Institute of Environmental Planners (PIEP), Manila



International Federation of Landscape Architects (IFLA), Geneva



Philippine Association of Landscape Architects (PALA), Manila



Building for Ecologically Responsible Design Excellence, Manila

Placemaking for Better Sustainable Environments

Creative work in our design studios are managed under time-based project schedules, providing cost-effective, easy to maintain built work on the ground.

Work had long been grounded on sustainable design long before LEED went fad, demonstrating the planning and design philosophy behind the practice.

Christopher S Partolin III

MPALA | CBP
Studio + Technical Director

Christopher's design management outlook comes grounded from years of maintained client relations. Exposure on green products, technologies and services, and experience in landscape construction industry brings in practical insights and depth in how project design and documentation can work within client expectations.

M +63908.284.9550
E csp.greenedge@gmail.com

Ronaldo DC Traballo

CPA | MPICPA | CBP
Chief Financial Officer

With a track record of turning around his company that now has a regional presence in Southeast Asia, Ronald brings in a solid experience in **financial management and business strategy**. His years as a consulting **business life coach** is a rich resource of visionary market development, combined with practical experience as a **certified public accountant**.

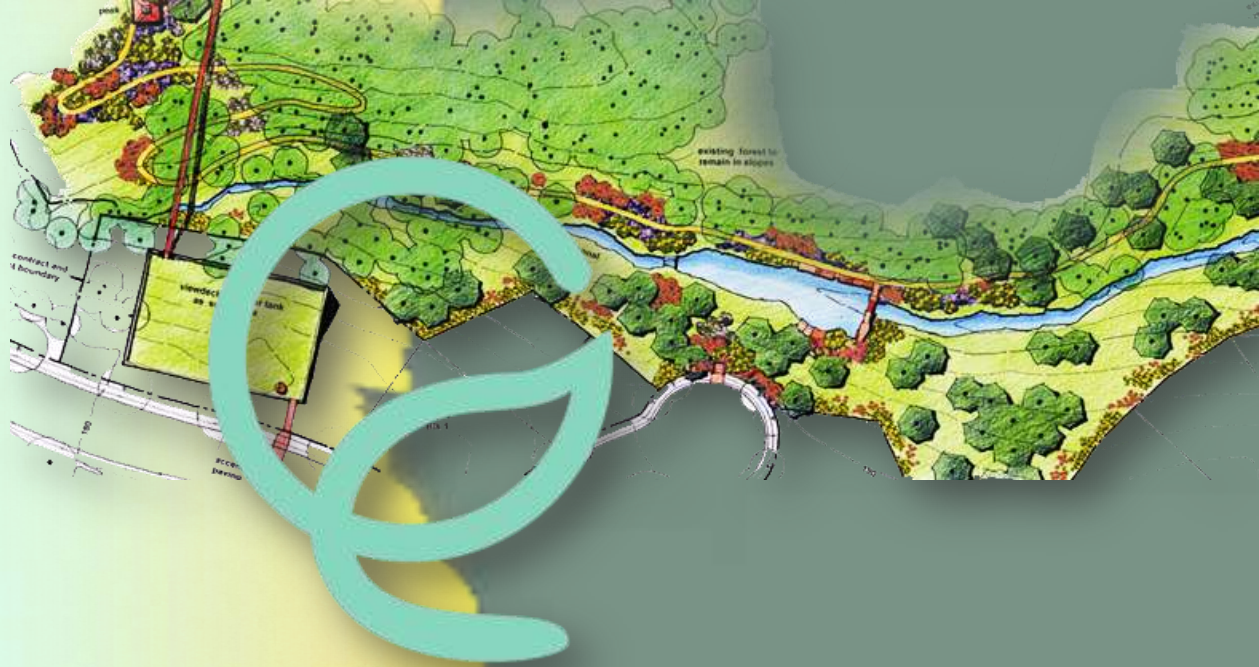
M +63918.900.4379
E ronnie@bomanitesasia.com

Gracelyn A Arquisola

Director,
Business Development

Riding onto her **civil engineering** education, Grace's early launch as an entrepreneur in the site construction industry brings in her gift for **marketing and business operations**. Acting as lead for new and recurring business development, her capability for business networking is merged with the goals of the firm's Design Studios.

M1 +63917.703.0021
E grace_arquisola@yahoo.com



OVERSEAS ENGAGEMENTS

PLACEMAKING PROJECTS

SITE + LAND PLANNING
LANDSCAPE ARCHITECTURE
URBAN DESIGN
PERMACULTURE
ENVIRONMENTAL ART

OUR RANGE Ways, Sites + Icons

Local + International
Plot to Township Scale
Arid + Humid Tropics
Corporate, Government + Institutional
Planned Developments
Public Realm

Office + Hotel Block, Financial Center District

West Bay Doha, Qatar

Design

Landscape Architecture Mixed-Use Office Development



Greenroofs

Stacked layers of intensive greenroofs are throughout this **9-tower** mixed-use block development, spread out in and among buildings in some **7 hectares** across the Doha waterfront corniche.

Canopies

Canopy patterns in **overlapping circles** were designed to contrast against the façade's mashrabiya lattice screens. *[left below].*

Since design completion, the project was totally acquired as **Qatar Petroleum's** corporate headquarters

Design and Executive Architects **KEO International**
Site Design Concept **Rick A Hilario II** lead design while with KEO



Design

Landscape Architecture Mixed-Use Office Development

Office + Hotel Block,
Financial Center
District

West Bay
Doha, Qatar

Water Feature
at Arrival Plaza

Since design completion, the project was totally acquired as **Qatar Petroleum's** corporate headquarters

Design and Executive Architects: KEO International
Site Design Concept: Rick A. Hillario, LEED lead design architect, KEO

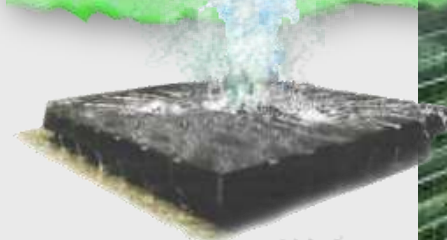


Office + Hotel Block, Financial Center District

West Bay

Doha, Qatar

Design



Landscape Architecture Mixed-Use Office Development



Water Features, Pooldecks

Seen as important, water featured prominently in the ground and roofdeck levels. Themed water features and a pooldeck at the hotel tower's penthouse level accommodated a split-level **adult and kiddie pool** integrated with a **waterplay area**.

Design and Executive Architects **KEO International**
Site Design Concept **Rick A Hilario II** lead design while with KEO



Design

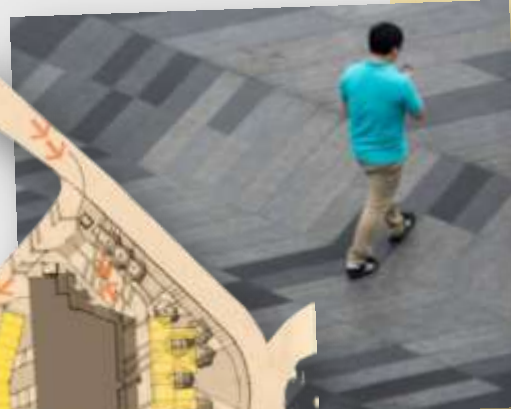
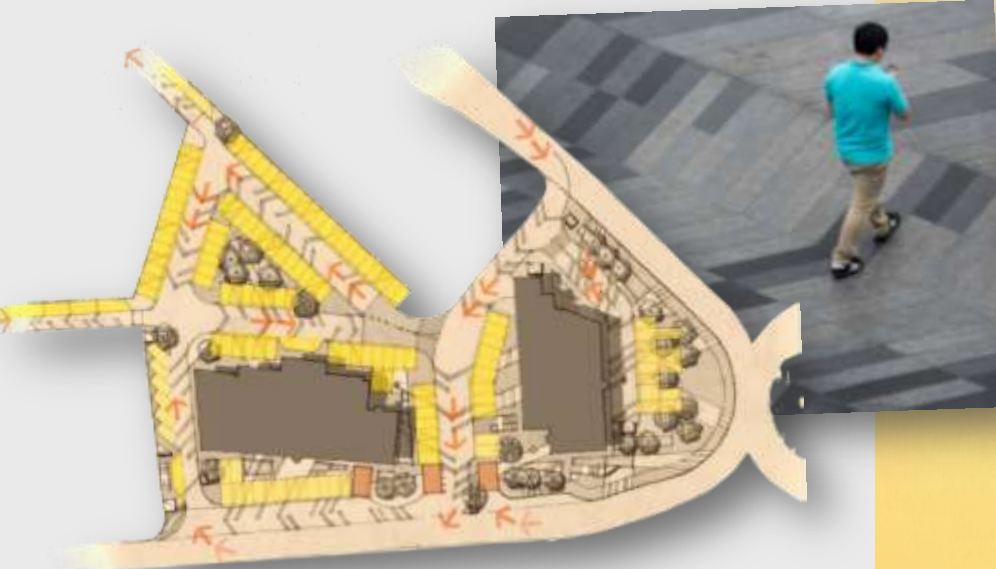
Landscape Architecture Office Development

Office Block, Kuwait Business Town [KBT]

Al Sharq

Kuwait City, Kuwait

Overlooking Kuwait's central business district (CBD), this planned office tower development was built around by a parking motorcourt. **The expanse of paving was proposed to assume a graphic diagrid pattern to serve as a traffic directional cue and at the same time to break out the outline of a conventional parking space.**



In keeping with a security strategy, planters at the streetfront doubled up as **safety barriers**.

Design and Executive Architects **KEO International**
Site Design Concept **Rick A Hilario II** lead design while with KEO



Office Towers, Abraj Quartier

The Pearl, Qatar

Gateway to Pearl Island

These twin towers are portals to Qatar's resort playground, The Pearl. Offices open up to **terraced greenroofs** overlooking panoramas of the West Bay and the Doha Urban Area.

Apart from the **grounds merging with the public realm, the design of greenroofs at split-level podiums and sky gardens** was also part of the engagement.

A **salt and wind-tolerant planting** was kept as simple as possible, softening up the hard and formal edges of the building envelope.

Design Architects **WMZH**
Executive A+E Design **KEO**

Landscape Architecture Lead Design,
Rick A Hilario II while with **KEO**

Design



Landscape Architecture Mixed-Use Residential Highrise



Office
Towers,
**Abraj
Quartier**
The Pearl,
Qatar

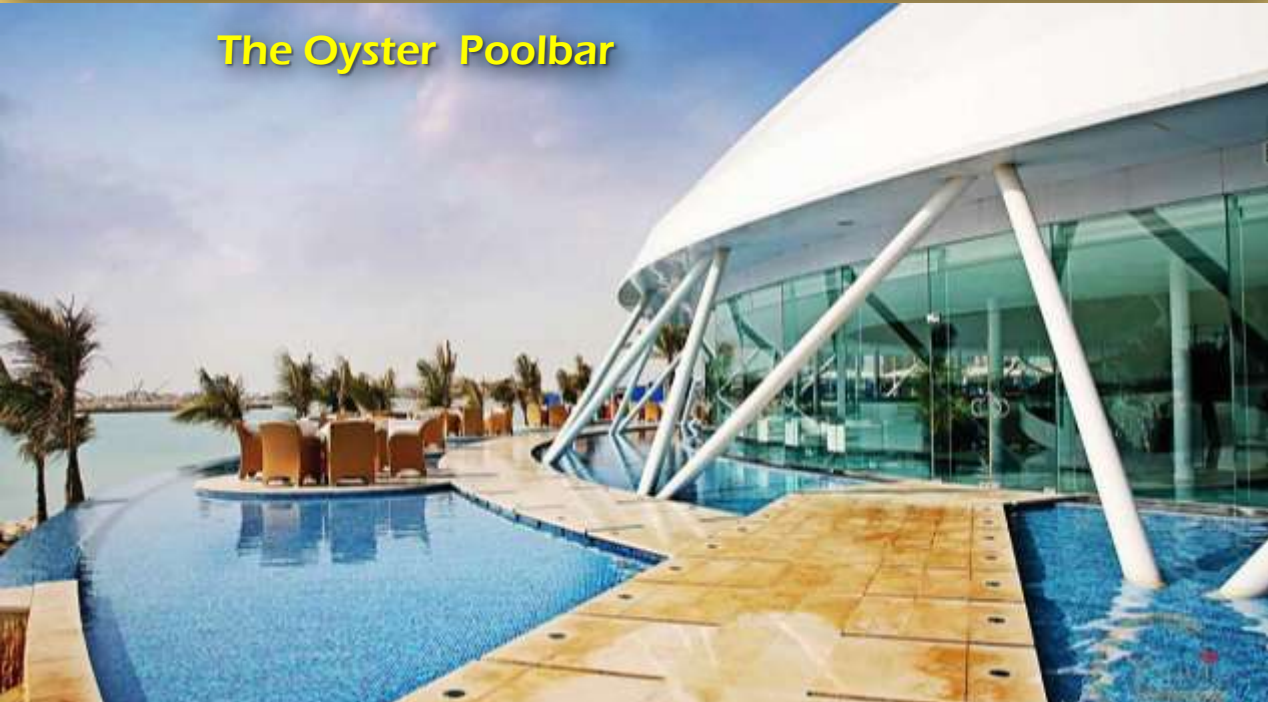


Design

Landscape Architecture
Mixed-Use Residential Highrise



The Oyster Poolbar



Design Architects **WMZH** Executive A+E Design **KEO**

Landscape Architecture Lead Design,
Rick A Hilario II while with **KEO**



Design

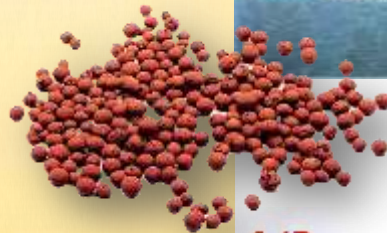
Landscape Architecture Mixed-Use Residential Highrise

Office Towers, Abraj Quartier
The Pearl, Qatar

Greenroof Design

Several **greenroof terraces** were part of the design programme that required unobstructed visibility while providing secure, safe edges at the railing's edge [see sketch below, edge condition].

Working closely with structural engineers to manage weight loads on slabs, a **lightweight LECA-based soil-less growing medium** had to be designed at one-third the weight if conventional soilmixes were used.



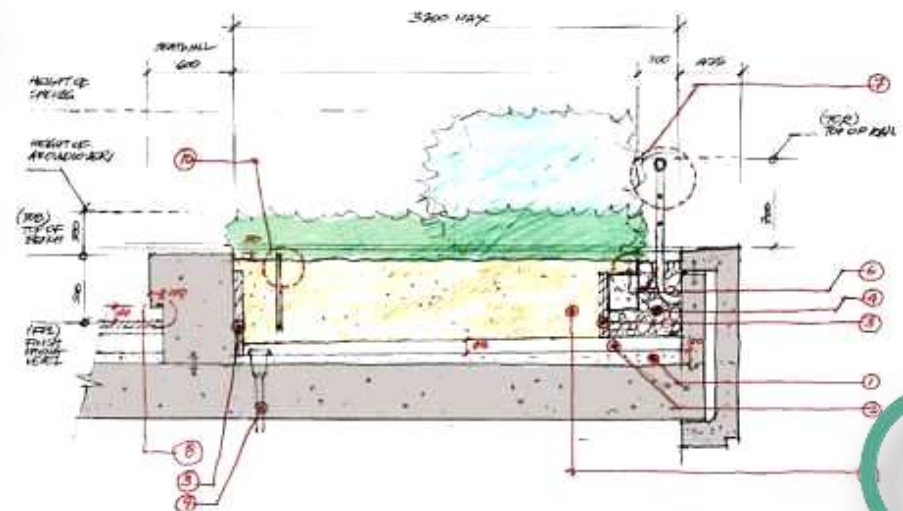
**1/3
Weight**

Coastal Armoring

Working with civil and water resources engineers, a **naturalistic effect** for an armor-lined water edge along the main drives were arrived at.

Design Architects **WMZH** Executive A+E Design **KEO**

Landscape Architecture Lead Design,
Rick A Hilario II while with **KEO**



Mixed-Use, Qanat Quartier

The Pearl, Qatar

Pockets of greenery were strategically inserted in this highly built-up development to relieve the expanses of paving.

Design

Landscape Architecture Mixed-Use Residential



Executive A+E Design KEO

Landscape Architecture Lead Design,
Rick A Hilario II while with KEO

Civic Center Jahra Ministries Complex

Jahra Governorate , Kuwait

Retail + Institutional Integration

As a one-stop shop, this 35-hectare civic space integrates retail zones for **24/7** public convenience. The landscape design has **circulation cutting across the site orthogonally anticipating desire lines**. Pedestrian movement cuts across gardens in contemporary water-wise design.

Design

Landscape Architecture Public Realm



Partial Site Plan :
Pearl Place, Ground Level



view of building envelope at main drop-off
from the Pearl Plazas



Civic Center Jahra Ministries Complex

Jahra Governorate, Kuwait

Design

Landscape Architecture Public Realm



Vertical + Horizontal Integration

The site-wide circulation had been vertically integrated with parking basement levels **linked by elevators** to garden courtyards, keeping cars hidden from view to avoid visual clutter.

Orthogonal desire lines cut the shortest paths between buildings, **keeping movement along tree-lined walks**.

Civic Center Jahra Ministries Complex

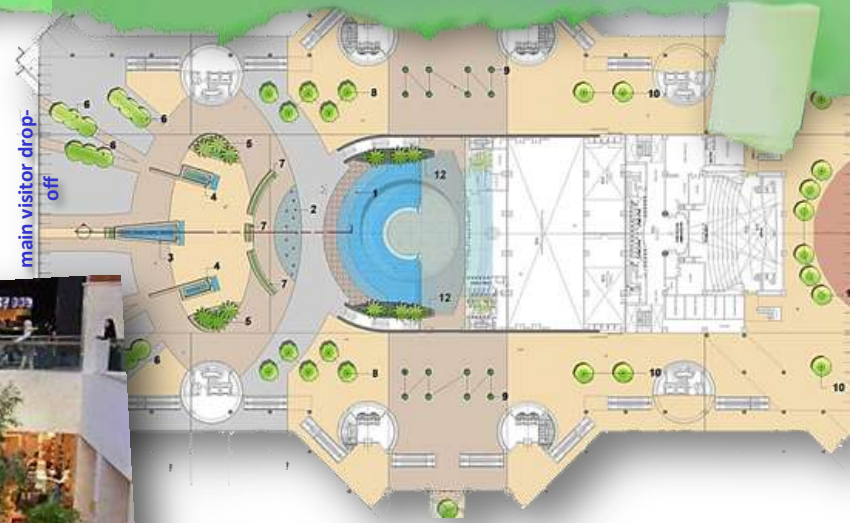
Jahra Governorate , Kuwait

Green Islands

A combination of natural and artificial daylighting allow inclusion of interior **planting islands and green-walls** for an inviting mall-like effect.

Design

Landscape Architecture Interior Plantscaping



Ovoid form-factor planters of variable diameters provide seating opportunities, apart from dining sets associated with designated retail spaces within the facility.

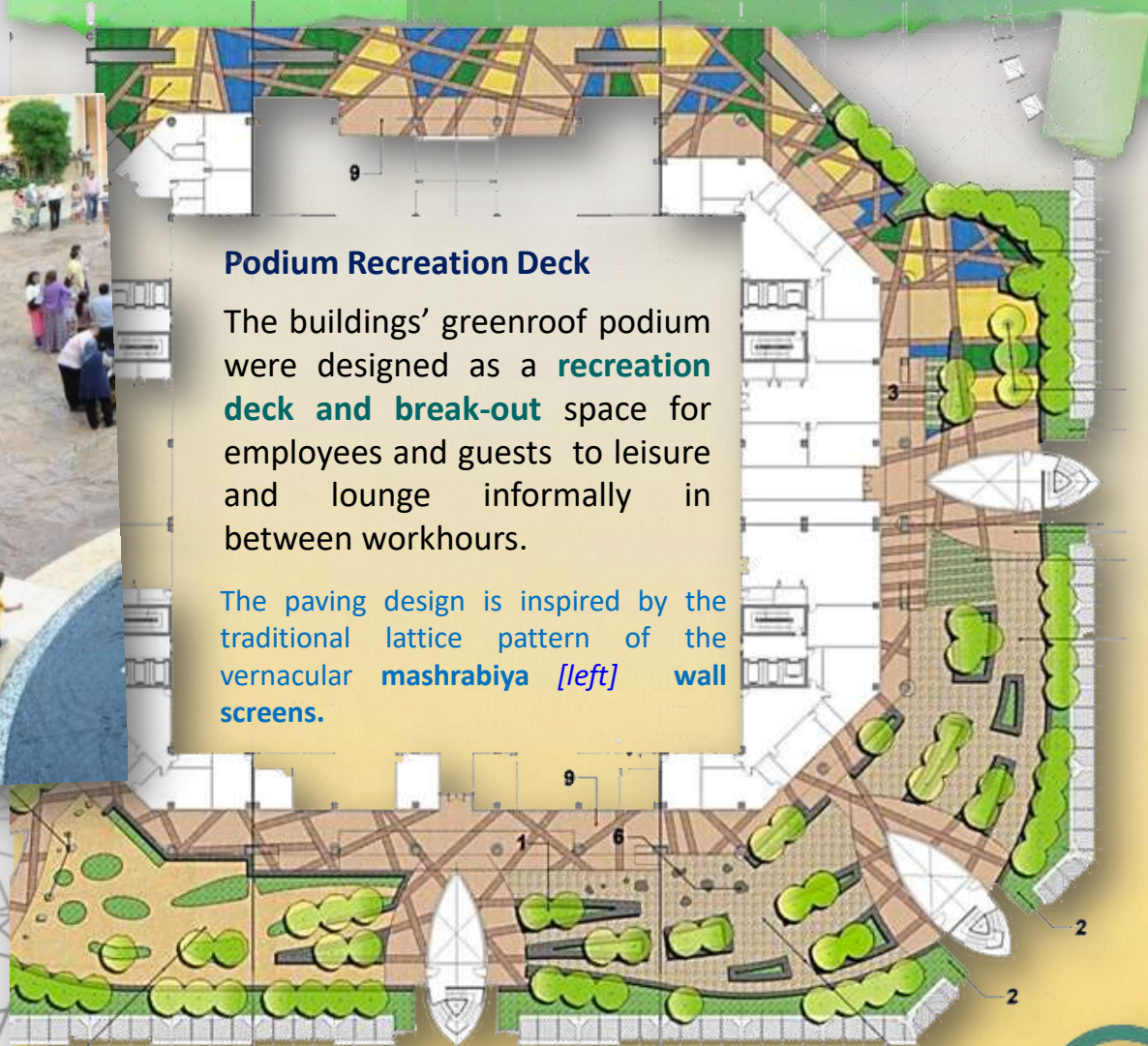
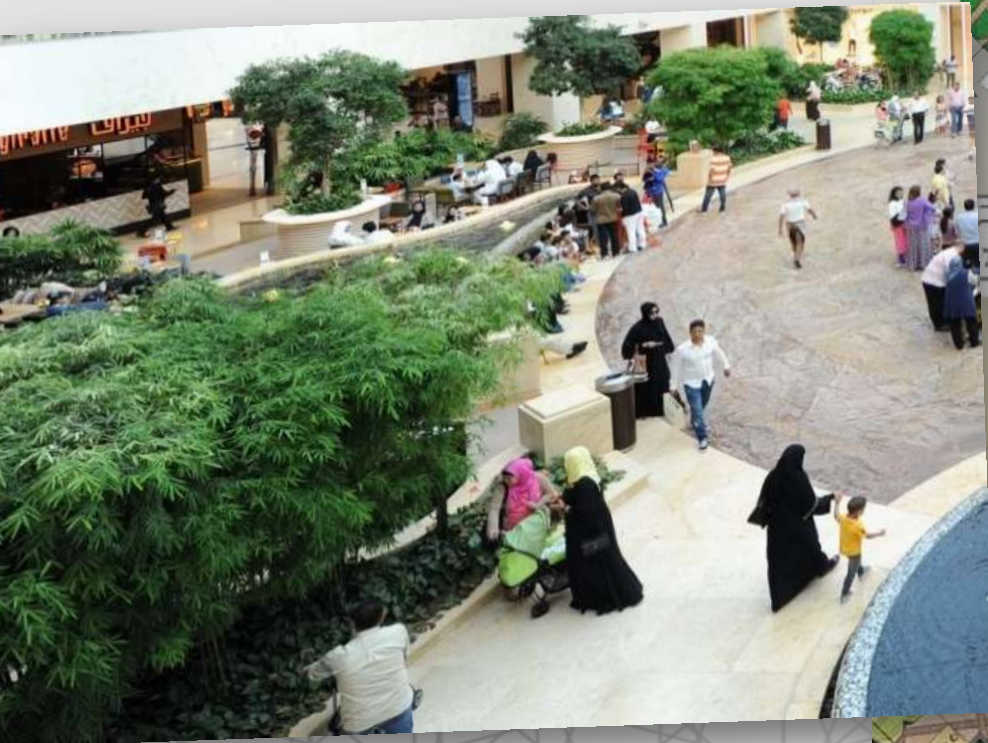


Civic Center Jahra Ministries Complex

Jahra Governorate, Kuwait

Design

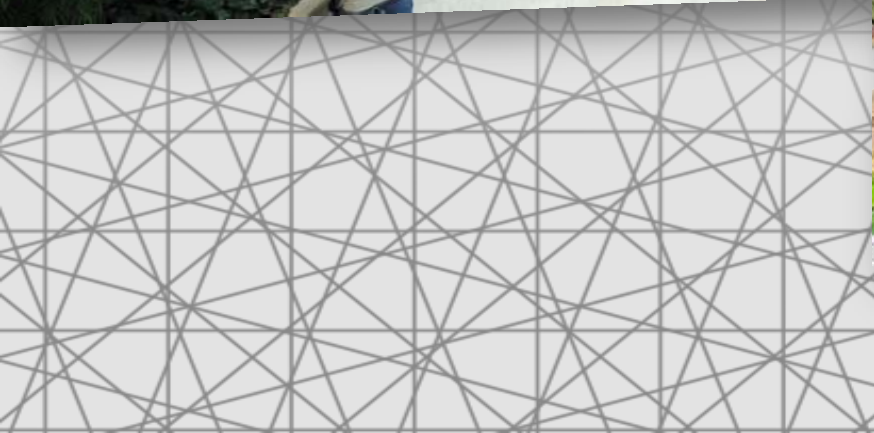
Landscape Architecture Sky Gardens



Podium Recreation Deck

The buildings' greenroof podium were designed as a **recreation deck and break-out** space for employees and guests to leisure and lounge informally in between workhours.

The paving design is inspired by the traditional lattice pattern of the vernacular **mashrabiya [left]** wall screens.



Design

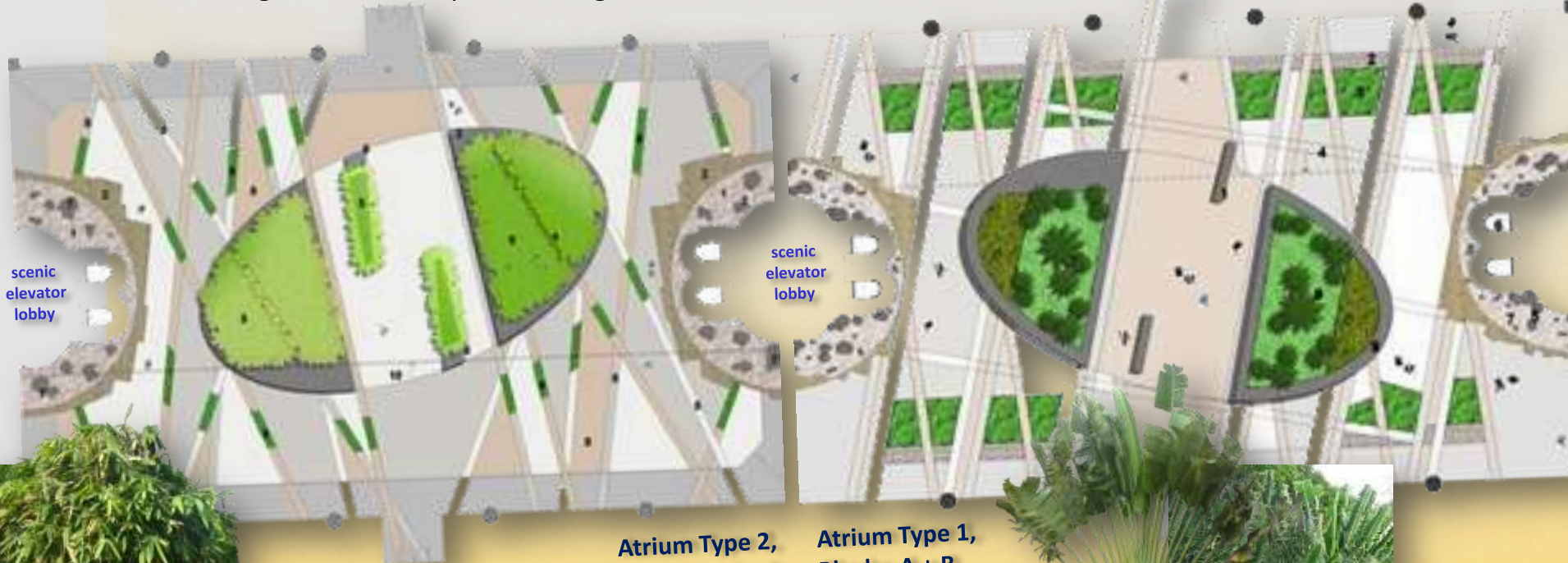
Landscape Architecture Interior Plantscaping

Civic Center Jahra Ministries Complex

Jahra Governorate, Kuwait

Atriums at Various Lobby Nodes

A combination of natural and artificial daylighting allow inclusion of interior **planting islands**, viewable from scenic elevators and integrated with bespoke seating elements



scenic
elevator
lobby

scenic
elevator
lobby

**Atrium Type 2,
Blocks C + D**

fast-growing tropical
bamboo clusters in
planters make a
sustainable carbon sink

**Atrium Type 1,
Blocks A + B**

Ravenala specimen
clusters with understory
provide a departure from
the usual interior palms



Mixed-Use Mall + Office Towers, The Promenade

Hawally

Kuwait City, Kuwait

Hardscape Design

Given the limited green footprint in the public realm allocated for this mall, the solutions were mostly in hardscape design in **surfacing and paving finishes while meeting ADA-compliance grading design.** Limited planting in raised planters was possible and tree planting out of the way of street utilities and services.

Design



Landscape Architecture Retail + Commercial



Canopies

Canopies over entrances were co-created with the architects to impart a **distinct ambience.**



Residential Highrise, Al Shams Beach Towers

Abu Dhabi, UAE

Shared Amenity Podium

A common amenity podium shared by two residential towers is designed as a split-level deck with a **central pool** and **al fresco dining**.

Design

Landscape Architecture
Mixed-Use Residential Highrise



Planning

Botanic Center, **Bayan Palace**

Amiri Guest Palace

Bayan, Kuwait

Outdoor + Indoor Plant Exhibits

Both outdoor and indoor house plant collections have added to Kuwait's biodiversity. The greenhouse conservatories are totally climate-controlled featuring a selected display of five [5] biomes or bioecological regions.

The facility is a recent addition to attractions for visiting foreign dignitaries billeted at the Palace, as with Bill Gates on a tour of the center *[left below]*.



Site Planning Biodiversity + Conservation



Botanic Center, **Bayan Palace**

Amiri Guest Palace

Bayan, Kuwait

Xeriscape

Spread in 14 hectares of crown land in the Amiri Diwan's guest palace for diplomatic dignitaries, this educational facility was masterplanned and designed also open public use on certain events. With an emphasis on desert-adapted water-wise planting, the design challenge for a **xeriscape strategy** was to have a palette of color in a flat featureless landscape.



Planning

Recreation Deck, Lusail Towers

Lusail City Waterfront

Lusail, Qatar

Located in reclaimed land, the **waterfront development is part of an urban leisure and retail precinct**. Heavy demand for street-level parking has prompted a site circulation legible to both motorists and pedestrians. Landscape design was done to design development stage.



Site Planning Multi-Use Developments



Scope of the site design was the **split-level amenity deck** linking the residential with the retail towers., as shown in the axonometric plan *[above]*.

Also designed was the ground level landscape design, with an emphasis on reformatting the **pedestrian circulation and the introduction of traffic calming strategies**.

Design and Executive Architects **KEO International**
Site Design Concept **Rick A Hilario II** lead design while with KEO



Planning

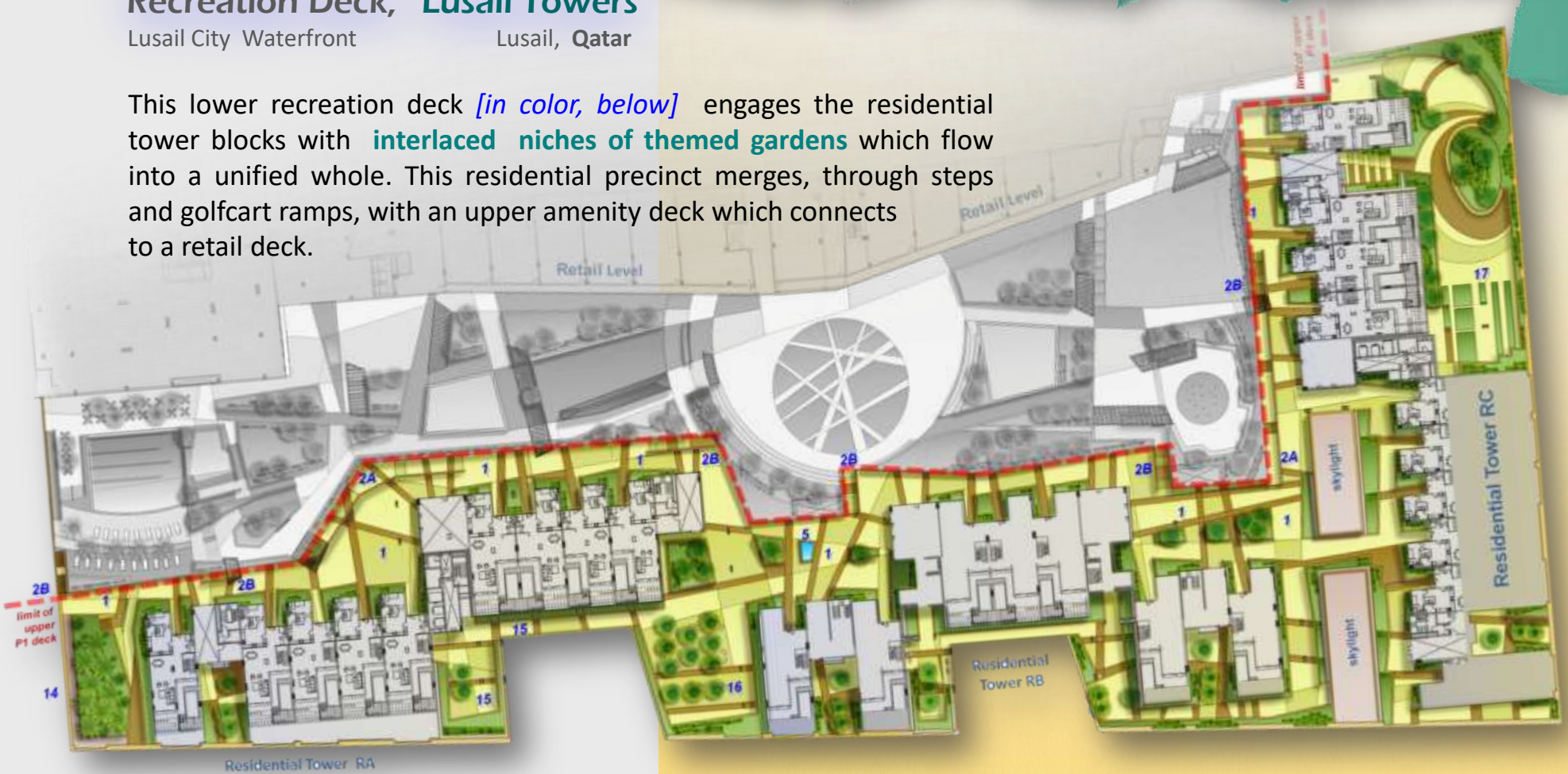
Site Planning Multi-Use Developments

Recreation Deck, Lusail Towers

Lusail City Waterfront

Lusail, Qatar

This lower recreation deck [in color, below] engages the residential tower blocks with **interlaced niches of themed gardens** which flow into a unified whole. This residential precinct merges, through steps and golfcart ramps, with an upper amenity deck which connects to a retail deck.



Site Development Plan,
Lower Deck Residential Towers

The site circulation, while allowing direct convenient access to each unit, emulates the **Old World feel of the traditional Arab village street pattern**.



Planning

Site Planning Multi-Use Developments

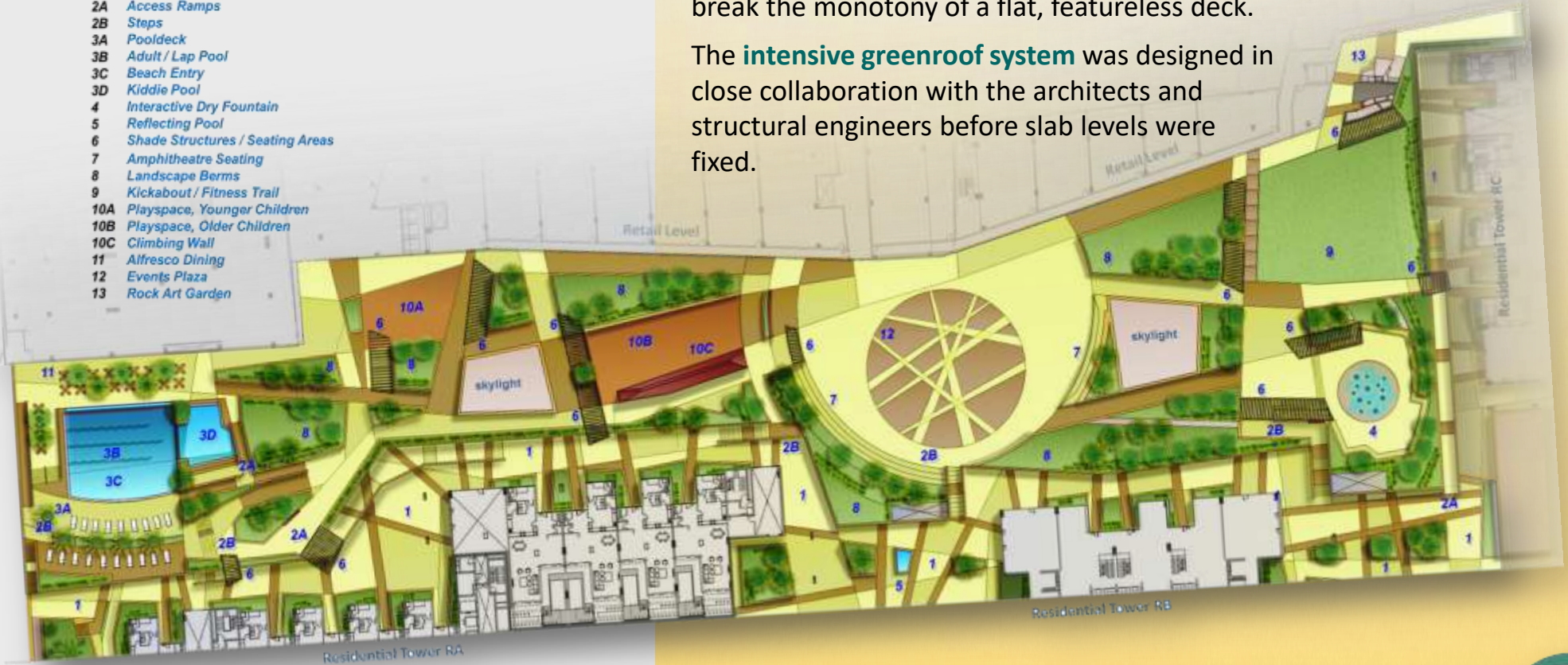
Recreation Deck, Lusail Towers

Lusail City Waterfront

Lusail, Qatar

Site Programme

- 1 Entry / Arrival Statements
- 2A Access Ramps
- 2B Steps
- 3A Pooldeck
- 3B Adult / Lap Pool
- 3C Beach Entry
- 3D Kiddie Pool
- 4 Interactive Dry Fountain
- 5 Reflecting Pool
- 6 Shade Structures / Seating Areas
- 7 Amphitheatre Seating
- 8 Landscape Berms
- 9 Kickabout / Fitness Trail
- 10A Playspace, Younger Children
- 10B Playspace, Older Children
- 10C Climbing Wall
- 11 Alfresco Dining
- 12 Events Plaza
- 13 Rock Art Garden



This split-level amenity deck was programmed to provide a wide range of leisure amenities to tower residents, animating the entire deck space with a **play of levels and inclined greens** to break the monotony of a flat, featureless deck.

The **intensive greenroof system** was designed in close collaboration with the architects and structural engineers before slab levels were fixed.

Design and Executive Architects **KEO International**
Site Design Concept **Rick A Hilario II** lead design while with KEO

Site Development Plan,
Upper Entertainment Deck Residential Towers



Design

Landscape Architecture Multi-Use Developments

Highrise, Lusail Towers

Lusail City Waterfront Lusail, Qatar

Amenity Multi-level Deck

The flat, featureless deck had to be articulated with **changes in levels for kinetic and visual interest** *[below]* and to demarcate and mediate between the retail and residential zones.



Sectional Elevation

Upper Entertainment Deck Residential Towers



Site Signage

Schematics for site signage as environmental art provided the key strategy for a **welcome and arrival statements** to various parts of the development.

Design and Executive Architects **KEO International**
Site Design Concept **Rick A Hilario II** while with KEO



Highrise, Lusail Towers

Lusail City Waterfront Lusail, Qatar

Design

Landscape Architecture Multi-Use Developments

Sky Gardens

A resilient **wind and salt-spray tolerant plant palette** was selected for the skygardens. [\[image, right\]](#)

Canopies at Entrances

Working closely with the building architects and structural engineers, **distinct identities** for the major entrances called for varying canopy patterns to boldly announce these portals [\[images, below\]](#).



Design and Executive Architects **KEO International**
Site Design Concept **Rick A Hilario II** while with **KEO**



Mixed-Use Mall + Hotel Towers, The **Reem Mall**

Reem Island

Abu Dhabi, UAE

Seamless Merge with Public Realm

From building envelope to street curb, the transition projects a whole seamless experience. Entry through a signature **ramp and steps passing through vegetated slopes at greenroofs** is a progressive realization into the multi-level retail zones designed to better engage the public.

Design

Urban Design

Retail, Leisure + Hospitality



Design and Executive Architects **KEO International**
Landscape Design Concept **Rick A Hilario II** lead design while with **KEO**



Coordination of Utilities, Retail Planning

Multiple stakeholders were consulted to resolve clashes with existing and proposed utility and services alignments along the streetscape.

The greenroof designs had to be resolved with Structural and MEP engineers as with retail consultants



Historic District, The **Heritage Village**

Al Sharq

Kuwait City, **Kuwait**

Adaptive Reuse

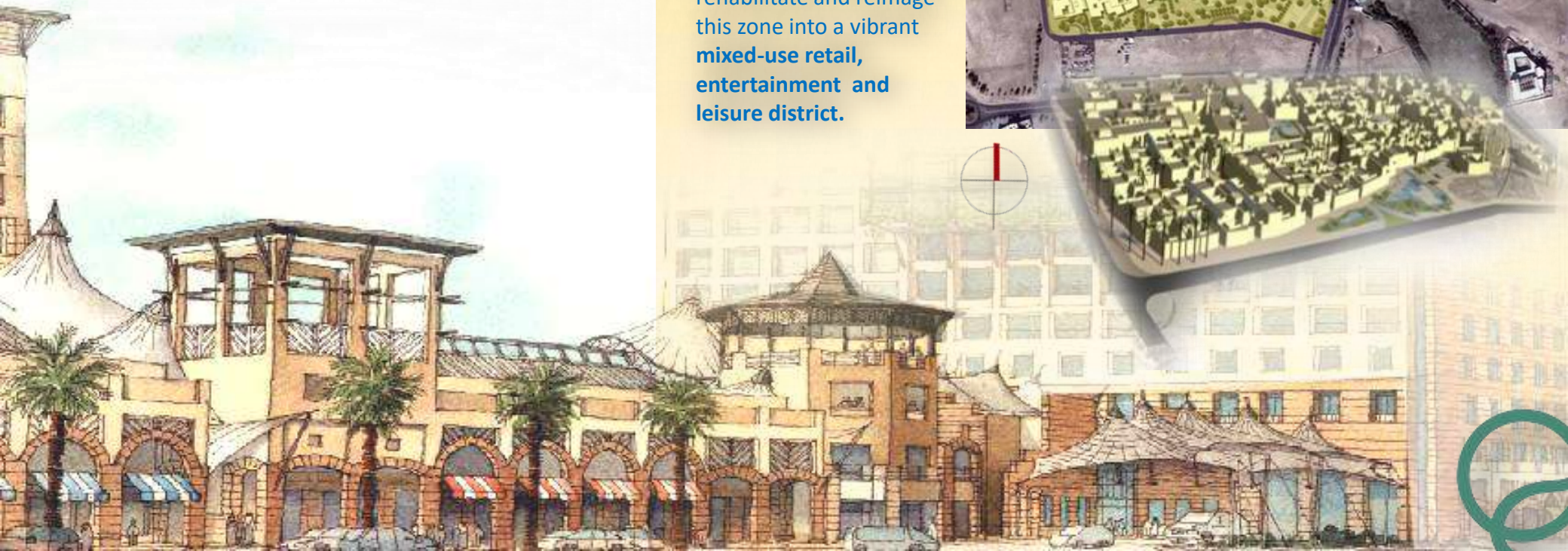
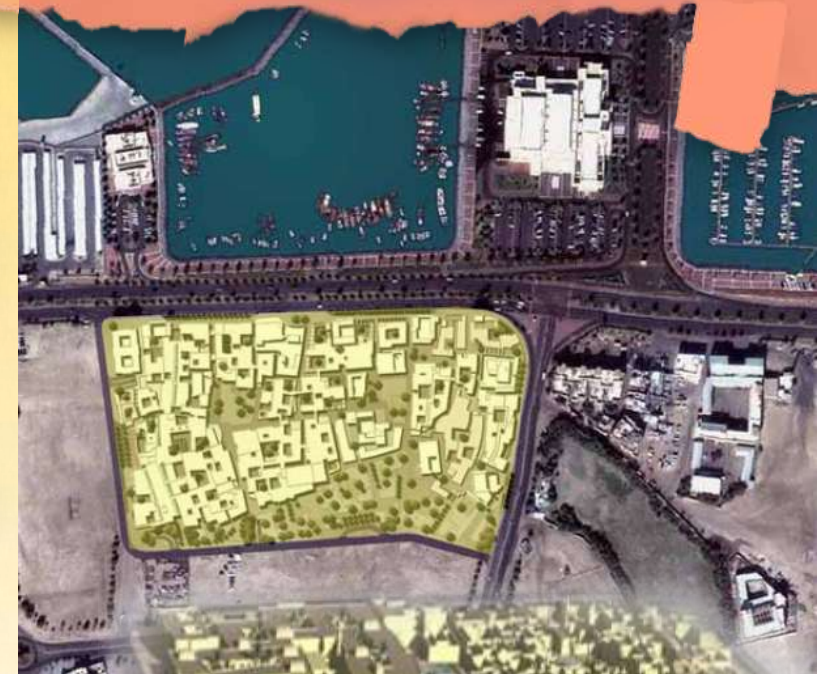
Retaining most of the traditional village's street pattern, the urban design drew inspiration from a traditional vocabulary of village life's maritime past.

Design

Along the strategic Gulf Road by the corniche, the site *[in yellow, right]* was once an old fishing village spread out in some **7.5 hectares**.

The proposed development attempts to rehabilitate and reimagine this zone into a vibrant **mixed-use retail, entertainment and leisure district**.

Urban Design Heritage Conservation



Historic District, The Heritage Village

Al Sharq

Kuwait City, Kuwait

Site Elements

Site furniture, signage and wayfinding and environmental art were folded into an **overarching unified theme** that celebrated the maritime tradition of old Kuwait in a vibrant animated ambience.

Part of the old city wall that used to run through this district was rediscovered and commemorated in paving.

Design

Urban Design Heritage Conservation



commemorative paving,
marking the old Kuwait
fortress wall



educational exhibits as site furniture [above]
replica maritime artifacts such as these
ancient ship's stone and wooden
anchors [right] were part
of the site's environ-
mental art and site furniture
statements



Design

Urban Design Heritage Conservation

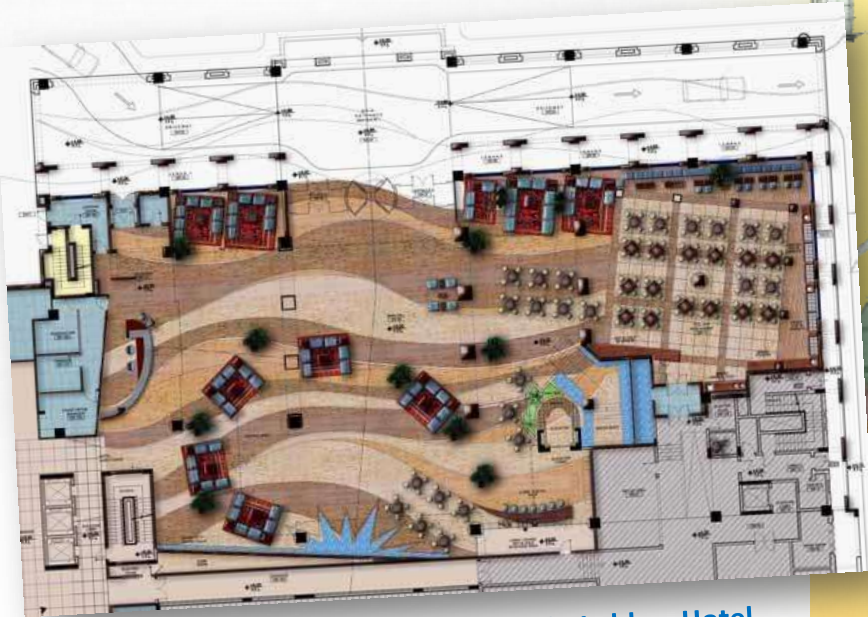
Historic District, The **Heritage Village**

Al Sharq

Kuwait City, **Kuwait**

Interior Plantscaping, Inner Courtyards

Working with the interior architect, space planning and furniture layout was iterated with the strategic positioning of **water features and planting**. Likewise, paving patterns had to reflect with the maritime theme of the project.



Main Lobby, Hotel



All courtyard lobbies, including those for the hotel [left], were folded into an overarching marine theme with a **fusion Old-World ambience**.

Design

Urban Design Heritage Conservation

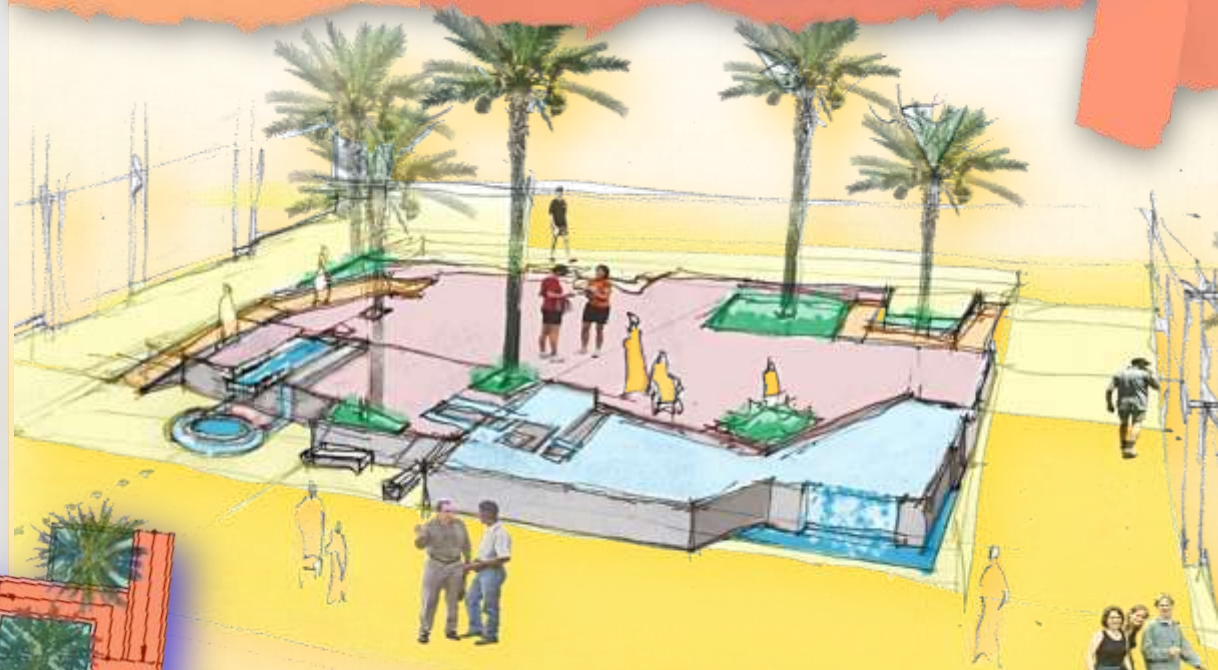
Historic District, The Heritage Village

Al Sharq

Kuwait City, Kuwait

Outer Courtyards

Given the design restrictions imposed by the depths of structural slab levels, raised podiums were created for both visual interest and to allow planting of large planting materials.



Changes in Grade Elevations

The almost flat, featureless site had to be made more interesting by creating grade changes such as raised podiums at the courtyards accessible by ramps.



Design

Landscape Architecture Leisure + Hospitality

4-Star Hotel, *The Julai'a Resort* Sabahiya Kuwait

This holiday villa beachfront resort incorporated secluded quiet, themed private pools for **VIP suites** designed for family getaways. The drop to the beachfront was resolved with grassed berms with panoramas of Kuwait Bay.



Design

Landscape Architecture Leisure + Hospitality

7-Star Hotel, *The Regency*

Salwa, Kuwait

Damaged after the first Gulf War, this old hotel was rehabilitated with a new look for its waterfront pooldeck. Seating covers articulate the deck.

Working with coastal hydraulics engineers, the beachfront was modified with a sand nourishment scheme.



Interactive Dry Fountain, Pools

A dry fountain was retrofitted for its appeal to all ages *[above right]*. A lap pool is separated by a multilevel deck from the main lounge pool.



Design

Landscape Architecture Retail, Hospitality + Leisure

Mixed-Use Mall + Hotel Towers, The **Reem Mall**

Reem Island

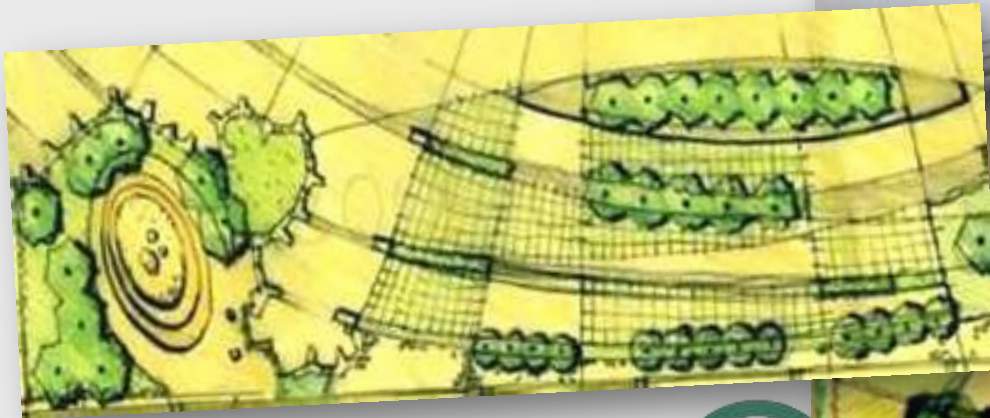
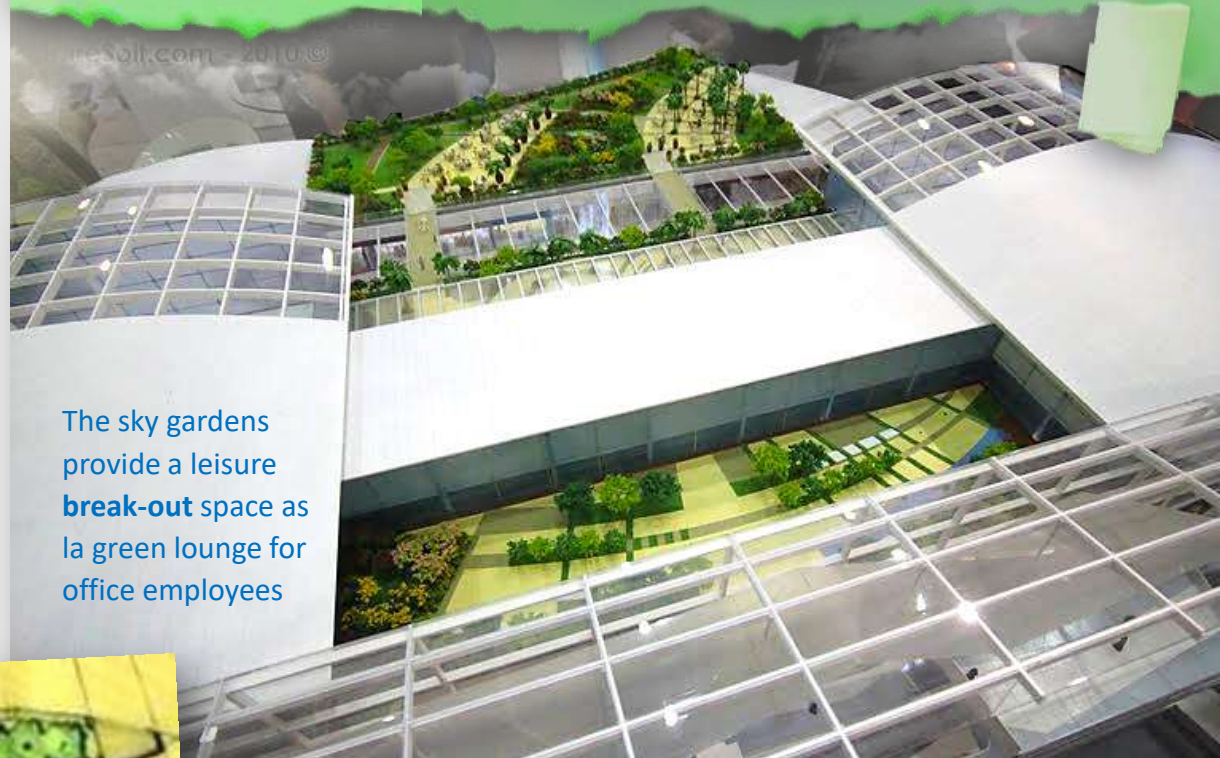
Abu Dhabi, UAE

Multi-Level Roofdeck Sky Gardens

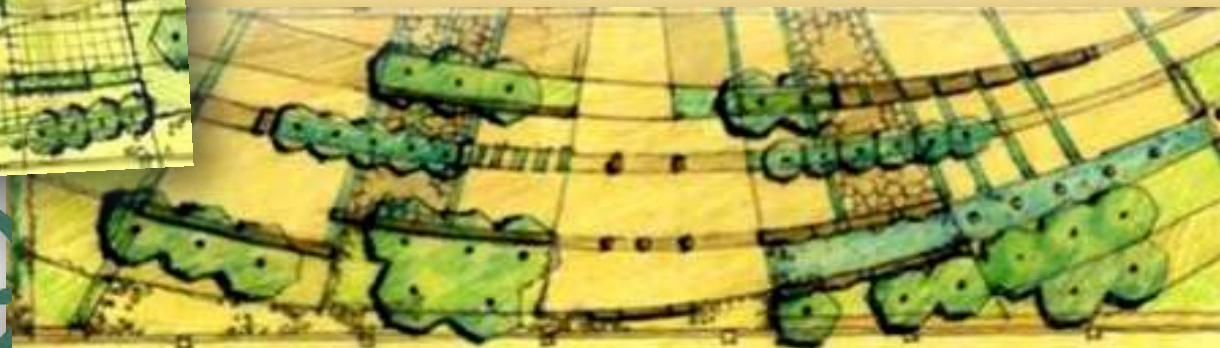
The original designs *[from sketches below]*, were faithfully adopted and presented as the development intent during a media launch for investors sometime in 2010.

Office spaces at the upper roofdeck complete the tenant mix for the project to which these deck gardens wrap around with.

The sky gardens provide a leisure **break-out** space as la green lounge for office employees



Design and Executive Architects **KEO International**
Landscape Design Concept **Rick A Hilario II** lead design while with **KEO**



Design

Landscape Architecture Retail, Hospitality + Leisure

Mixed-Use Mall + Hotel Towers, The **Reem Mall**

Reem Island

Abu Dhabi, UAE

Vertical Gardens

Vertical gardens were conceptualized to soften up and enliven the mall's interiors, using a tested palette of lush tropical plant materials that do well under climate-controlled indoors.



Design and Executive Architects **KEO International**
Landscape Design Concept **Rick A Hilario II** lead design while
with **KEO**



Design

Landscape Architecture Retail, Hospitality + Leisure

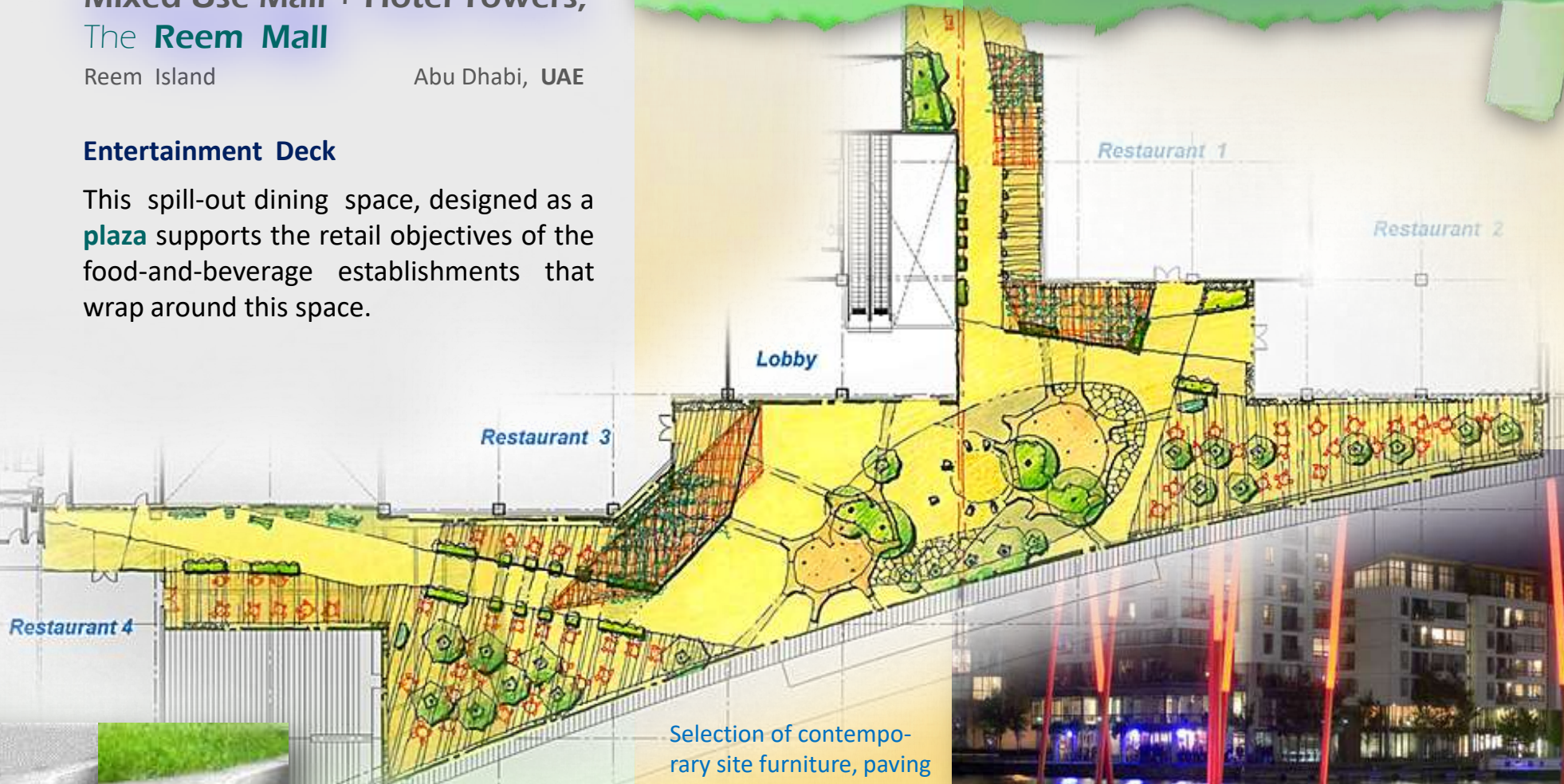
Mixed-Use Mall + Hotel Towers, The **Reem Mall**

Reem Island

Abu Dhabi, UAE

Entertainment Deck

This spill-out dining space, designed as a **plaza** supports the retail objectives of the food-and-beverage establishments that wrap around this space.



Seat Planter Options

Selection of contemporary site furniture, paving materials, shade structures and site lighting were part of the overall placemaking effort.



Design and Executive Architects **KEO International**
Landscape Design Concept **Rick A Hilario II** lead design while with **KEO**

Mixed-Use Office + Residential Towers, The **Carina Views**

Reem Island

Abu Dhabi, UAE

Entertainment Deck

This 4-tower development, adjacent to a major mall, shares an entire podium designed as an intensive roofdeck with overlooking views of the marina.

Design

Landscape Architecture Mixed-Use Office + Residential



Waterfront Promenade

The edge to water was designed as a seamless promenade merged with the public realm, folding in Abu Dhabi Municipality's urban design guidelines.

Design and Executive Architects **KEO International**
Landscape Design Concept **Rick A Hilario II** lead design while with **KEO**



Office Block, Amiri Diwan Headquarters

Amiri Guest Palace Bayan, Kuwait

The facility has a number of **climate-controlled atriums** at groundfloor level, which called for interior plantscaping lending ambience for **coffeeshops and reading libraries**.

Straddling a **7.65-hectare** plot, this office sits above a large basement parking footprint. Much of the ground level space adjacent to the building is a huge **greenroof**.

Design

Landscape Architecture Institutional



Design

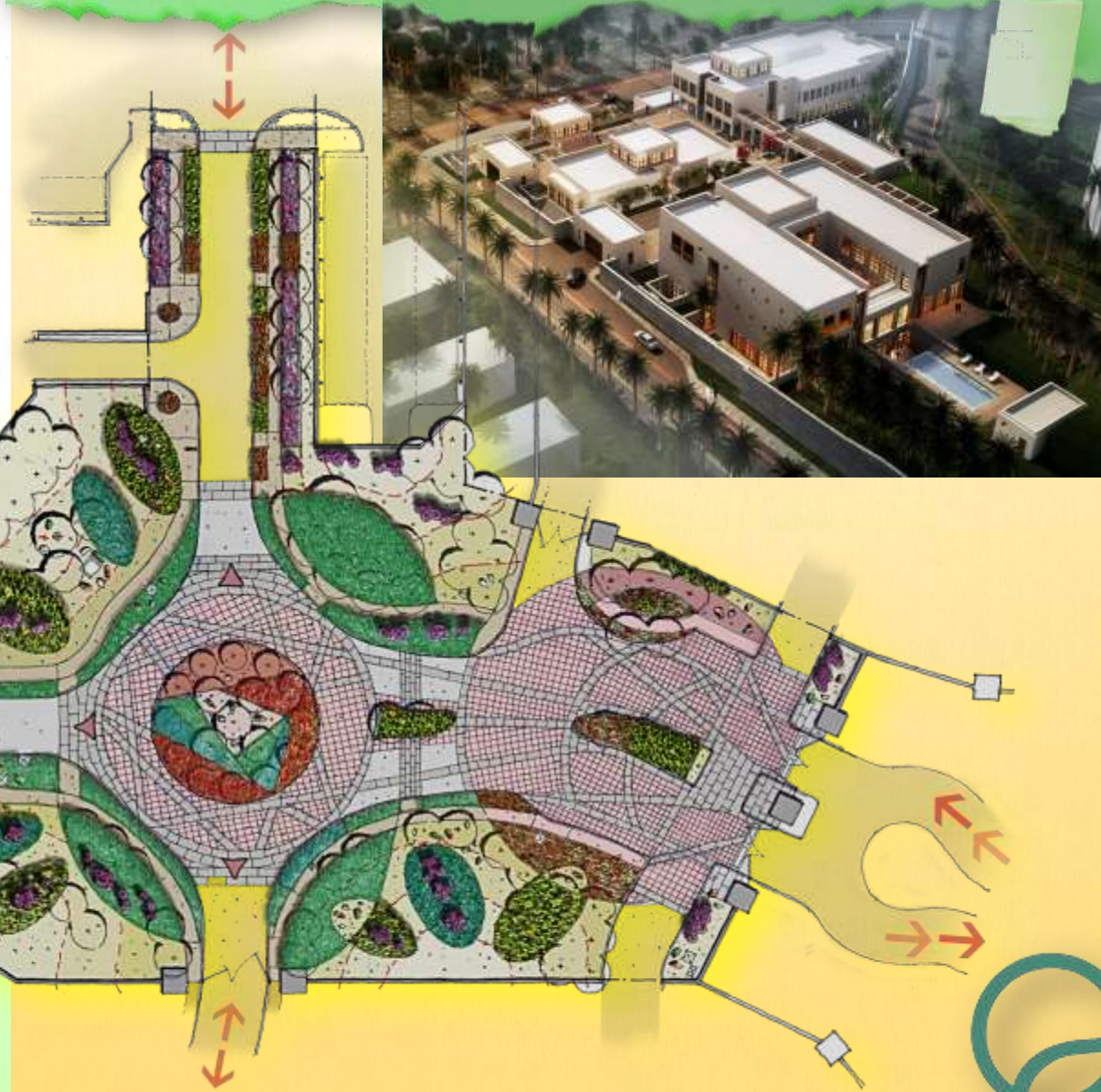
Landscape Architecture Institutional

Gateway Entry, Bayan Palace Gate 3

Amiri Guest Palace Bayan, Kuwait

Welcome Statement

A more contemporary image fusing the old with the new defined this welcome statement for this and all other gates into the palace.



Landscape Plan Layout,
Understorey Planting + Paving Layer

Linear Park, Bayan Palace

Amiri Guest Palace

Bayan, Kuwait

Design

Landscape Architecture
Institutional

Due to high-level security restrictions, no on-the-ground images of these installation is available.



Landscape Plan Layout,
Understorey Planting + Paving Layer



Guest Amenity

Providing visiting guests and diplomatic dignitaries with secluded and quiet **leisure opportunities** within the palace grounds, this linear park transformed what was once an idle strip of land.



Linear Park, Bayan Palace

Amiri Guest Palace

Bayan, Kuwait

Design

Landscape Architecture
Institutional

Due to high-level security restrictions, no on-the-ground images of these installation is available.



Guest Amenity

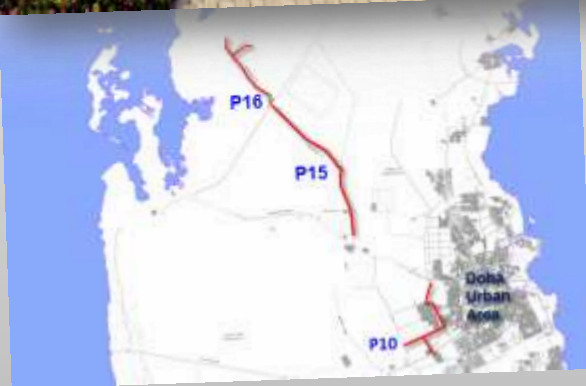
Providing visiting guests and diplomatic dignitaries with secluded and quiet **leisure opportunities** within the palace grounds, this linear park transformed what was once an idle strip of land.

Landscape Plan Layout,
Understorey Planting + Paving Layer



Streetscape Enhancement Highways Northwest of Doha Qatar

Xeriscape Strategy



Landscape design of typical conditions along the proposed **P10**, **P15** and **P16** highway northwest of the **Doha Urban Area**, as shown across, were formulated.

Design

Landscape Architecture Public Realm

Motorway Interchanges

biased towards a less manicured look, more accepting of native and adapted wildflowers



In advising infrastructure engineers, the design task was to **veer away from the default manicured landscapes** common in the region into more sustainable systems. The visualizations made folded in the **environmental services that wadis perform in annual stormwater management**. The gravelled areas act as **bioswales** to capture surface runoff.

Less lawn footprints for water conservation and stormwater management was recommended strategy.



Design

Environmental Art Public Monuments

Public Art Constitution Square

Bayan Palace Kuwait City, Kuwait

The Constitution Monument



Encoded Gematria

The artwork encodes the significant numbers **5**, **11** and **20** which resonate in the geometry of this piece.

20	11	5
20 Constituent Assembly Members	11 Ministers 11 Nov 1962	5 Chapters



Design

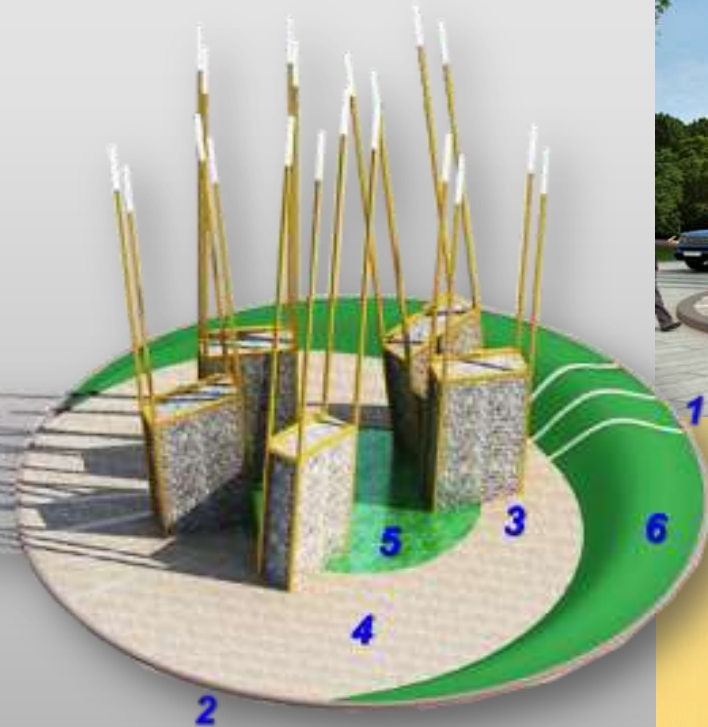
Environmental Art Public Monuments

Public Art **Constitution Square**

Bayan Palace Kuwait City , Kuwait

The **Constitution Monument**

Commemorating the jubilee of Kuwait's adoption of its Constitution, this art installation symbolizes key historic circumstances and Kuwait's maritime heritage.



The stone 'megaliths' stand for the Constitution's five [5] chapters rendered in an assembly of **stone in stacked gabions**, the **lighted masts stand for beacons** : the founding assembly members . The masts also represent the mast of the traditional sea-voyaging **dhow**, a mainstay of Kuwait's maritime heritage.



Design

Environmental Art Water Features

Water Art , Linear Park

Bayan Palace

Kuwait City , Kuwait

Art Series

Making up a series of five [5] installations along a Linear Park, these minimalist water art pieces are variants of a single theme, all in an aerodynamic form factor to allow pedestrian cross-traffic to easily move through.

The surfacing materials for these pieces were in various combinations of **glass mosaics, natural stone and porcelain** cladding.

Uniting the installations was an overarching **paving design** using a mixed format of different paver sizes and colors.

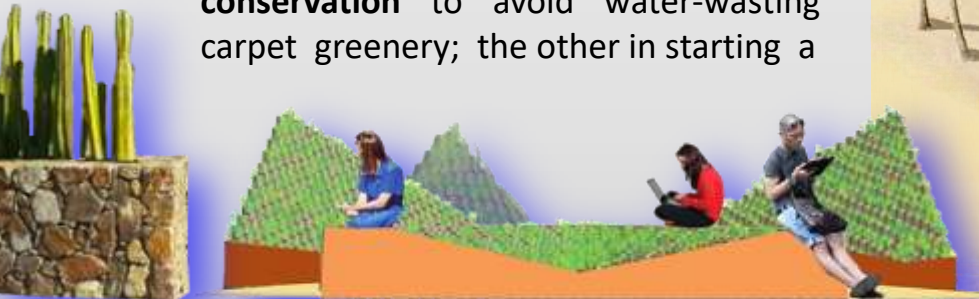


Geo + Earth Art, Public Realm

Parks and Streetscapes Abu Dhabi, UAE

Earth Art in Xeriscapes

Several recommendations for xeriscape schemes in the public realm had been driven by two-fold objectives : one is **conservation** to avoid water-wasting carpet greenery; the other in starting a



Combining **created landforms** as traffic barriers that double up as seating is one bespoke solution.

push towards a **new urban design aesthetic**. Our principals have a depth of experience in creatively weaving plant massing that simulate the natural, clumping nature in wadis and sabkhas, and the warm textures of native natural sand and rock formations.

Design

Environmental Art Landforms



The **Naturalist Beauty of Arid-Zone Stormwater Management**

Randomly placed gravel washes along natural or **terra-formed dips and contours** had been recommended to manage seasonal stormwater flows, as no different from the natural cycles in wadis and sabkhas.



Design

Environmental Art Landforms

Geo + Earth Art, Public Realm

Parks and Streetscapes Abu Dhabi, UAE

Landforms as Earth Art in Xeriscapes

Using **biomimicry**, planting design can achieve a different esthetic with how patches or clusters of **water-wise adapted vegetation** contrast with the stark naturalism of **desert landforms**.

Understanding the ecology of how plants compete and cooperate for resources, a better expressed landscape



design can be made to fit more with local contexts.



The key to irrigation success in Operations and Maintenance [O+M] is in grouping or clustering species with **similar water requirements**.

The use of **stone mulches** protects soil from needless sunbaking.



Design

Environmental Art Landforms

Geo + Earth Art, Office Tower SAIF Center

Al Sharq Kuwait City, Kuwait

Landforms as Earth Art

Planted berms in the public realm and the tower's **entry plaza** provided the art components for the arrival statement, including the functional vertical axis wind turbines that also generated part of the tower's total energy demand.



Kuwait's First Leed-Certified Building

The Sheikh Ahmed Al Sabah International Financial Centre is Kuwait's first LEED-certified facility

clear view of tickertape panel from groundlevel



vertical axis wind turbines (VAWT) serve as sculptural landmarks and **kinetic art pieces** that provide supplementary energy



Design and Executive Architects **KEO International**
Landscape Design Concept **Rick A Hilario II** lead design while with **KEO**



Placemaking
for Better
Sustainable
Environments

Land Planners
Landscape Architects
Urban Designers

Place
Makers

MANILA | DAVAO



Ways, Sites + Icons

HEAD OFFICE

26G Main Avenue
Cubao, Quezon City 1109
Metromanila, The Philippines

T +632.755.9042
M1 +63917.813.2363
M2 +63949.364.2132
E tap.greenedge@gmail.com
W www.greenedgedesign.net

GREENEDGE

BRANCH OFFICE

Unit 8 2F
SJRDC Building 2
Insular Village Phase 1
Lanang 8000, Davao City
The Philippines
M1 +63949.164.0065