



Mark Fox Co. Real Estate

LOOKOUT PEAK RANCH

Kingsland, TX

WWW.MARKFOXCO.COM



Lookout Peak Ranch

www.markfoxco.com



PROPERTY DETAILS

Approximately 947 acres with over 5,800 feet of Mill Creek - the most spectacular part of it being roughly 1,600 feet which drops over 100 feet of elevation featuring dramatic waterfalls and pools teeming with life.

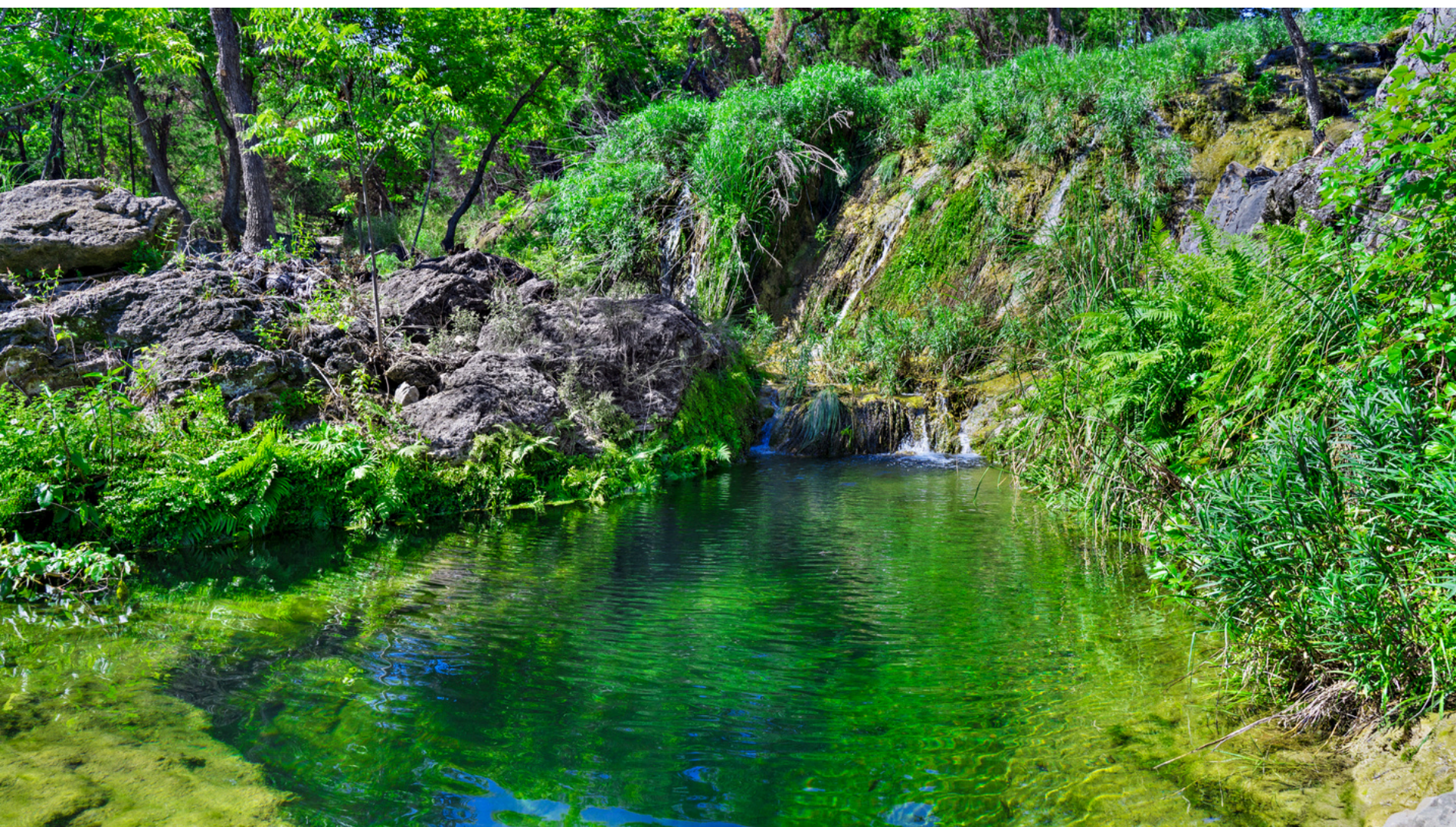
Mill Creek flows through the canyons of a chain of hills known as Backbone Ridge and eventually spills into Lake LBJ. The springs that feed this creek emerge from Paleozoic rocks and flow over majority limestone and travertine deposits at the surface. Lookout Peak Ranch offers a diverse landscape at elevations ranging from 940 feet to over 1,300 feet with 360 degree views of the Texas Hill Country and Lake LBJ.





Lookout Peak Ranch

www.markfoxco.com



Lookout Peak Ranch

www.markfoxco.com





Lookout Peak Ranch

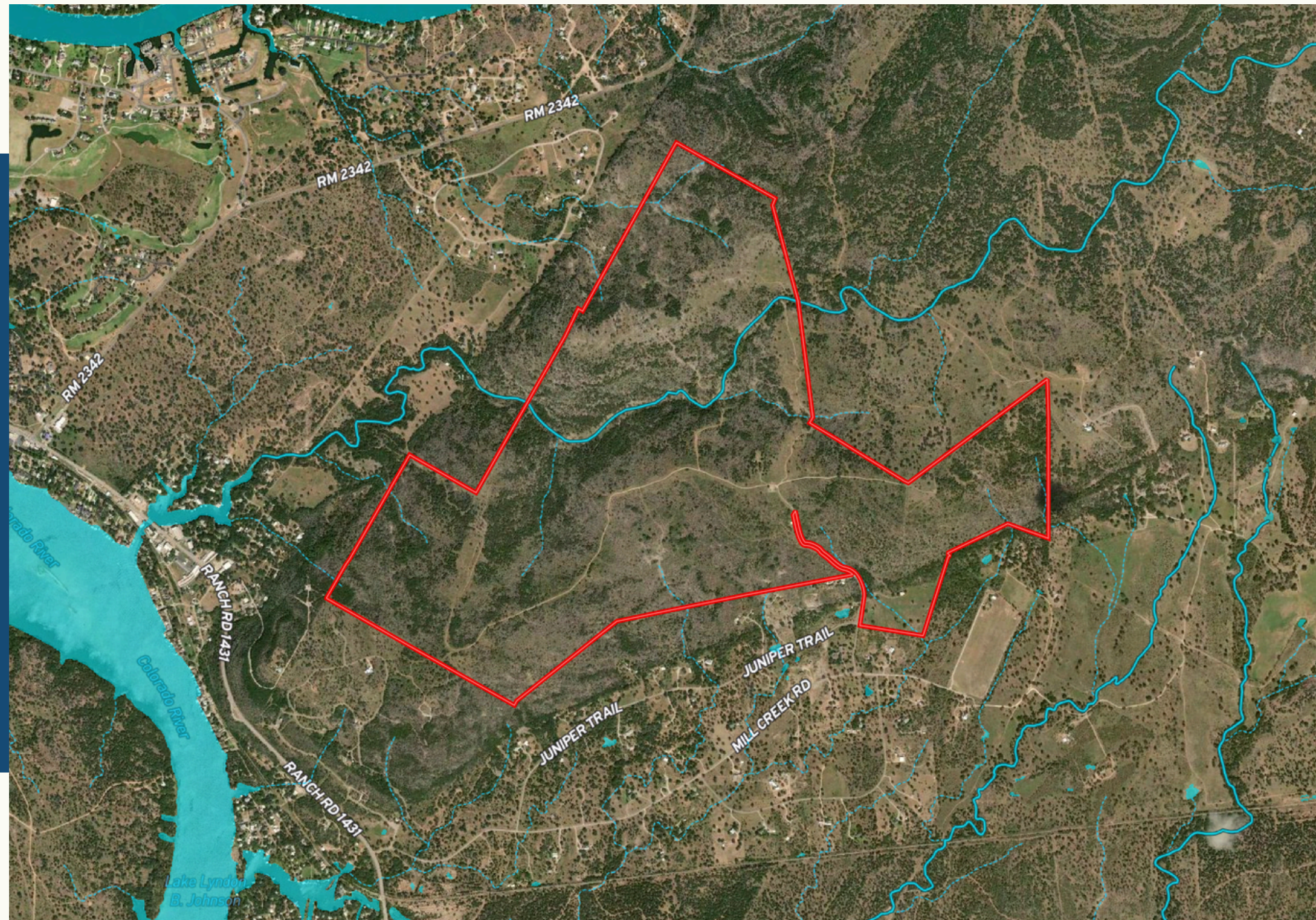
www.markfoxco.com



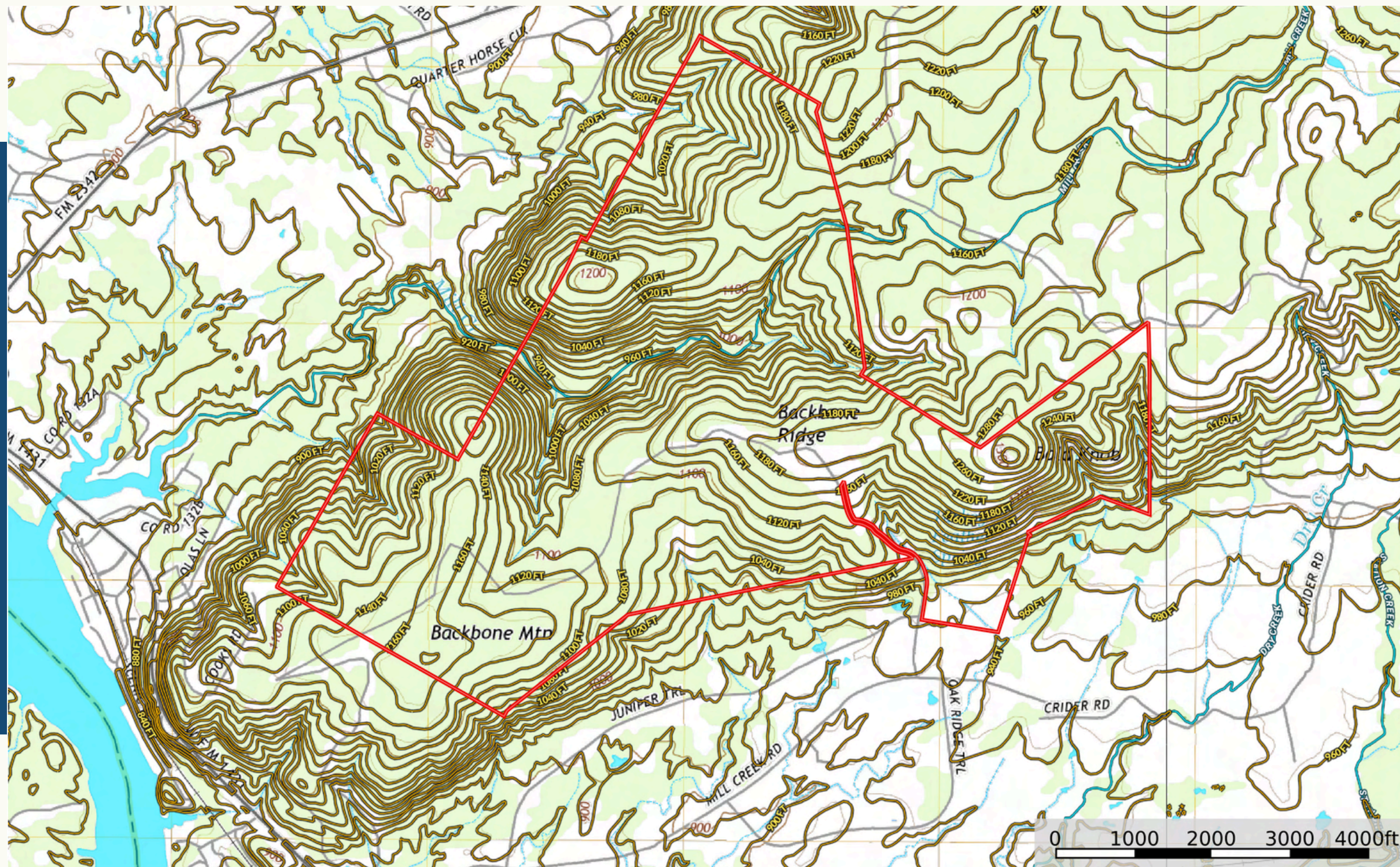
Lookout Peak Ranch

[Click to view](#)

[INTERACTIVE MAP](#)



Lookout Peak Ranch



LEARN MORE

Todd Fox | Farren Fox

(512) 755-4433 | (512) 755-1547

todd@markfoxco.com | farren@markfoxco.com

www.markfoxco.com

markfoxco@gmail.com

515 Hwy 281

Marble Falls, TX 78654