



Galena Park Independent School District

Fine Arts Department

14705 Woodforest BLVD | Houston, Texas 77015

832.386.1268 (office)

Samuel Harris, Director for Fine Arts & Academic Enrichment

Mickey Wininger, Program Director for Fine Arts

Stacy Davila, Fine Arts & Academic Enrichment Secretary

October 23, 2024

Directors,

On behalf of the Galena Park Independent School District and our Fine Arts Department, I would like to take this opportunity to congratulate your band for advancing to the UIL Area F Marching Band Contest to be held on **Saturday, November 2** at the GPISD athletic stadium ([15025 Wallisville Rd, Houston, TX 77049](https://www.gpisd.net/15025-Wallisville-Rd-Houston-TX-77049)). The performance schedule and contest maps are available on the UIL Region 19 Music webpage (<https://region19uilmusic.com/area-f/>).

BUSES & EQUIPMENT TRUCKS will enter the stadium complex from **Castlegory RD** (see [contest maps](#)).

1. As you exit Beltway 8 and approach the stadium on Wallisville RD, **Castlegory RD** is the **second traffic light** from the Beltway (on the north, past Walgreens, before the YMCA).
2. Equipment vehicles are asked to follow **behind** the student buses into the stadium complex.
3. GPISD staff and parents assisting with parking will greet you after you turn off Castlegory RD onto Mustang DR and direct your buses and equipment vehicles to the *Bus & Truck Parking Lot* (see [contest maps](#)).
4. Once the parking lot on the south side of the stadium reaches capacity, buses will begin parking in the north east parking lot (marked as 3B on [contest maps](#)).
5. **Sideline percussion instruments, drum major podiums and props** will be unloaded in the *Equipment Truck Parking Lot* as this is in close proximity to the *Pit Entrance/Field Exit* gate (see [contest maps](#)).
6. GPISD parent workers are scheduled to be in place by **6:30 AM** to assist with parking. Please do not plan to arrive prior to 6:30 AM.
7. Cars and all personal vehicles must enter from **Evanston LN** (third traffic light after the Beltway).

STUDENT BAND MONITORS will meet your band approximately **30 minutes** prior to your warm-up time.

1. Band monitors will assist in locating **restrooms** and **water fountains** (inside the NSSH cafeteria) prior to warm-up and lead your band to the outdoor warm-up area, field entrance, field exit and back to your equipment vehicles and buses following your performance.

2. Band monitors will provide **ten (10) chaperone wristbands** per band to each participating head band director. Directors, staff, and parents assisting with sideline percussion, props or other equipment during your band's performance do not need a pass to enter at field level but band staff and parents must have wristbands to enter the stadium as spectators following your band's performance.
3. Band monitors will mark students' hands if they will be entering the stadium following your band's performance. Please ensure that all students get their hand marked either before or after your performance (WWs, brass, battery percussion, sideline percussion, & colorguard).

IMPORTANT INFORMATION:

1. Allow 15 minutes to travel from the bus & equipment parking area to the warm-up area and allow ample additional time if planning a restroom stop in the NSSH cafeteria.
2. **Warm-up is 45 minutes.** This includes moving into and out of the warm-up area.
3. Travel time to the gate from warm-up is 10 minutes and the announcement to take the field for pre-placement and/or warm-up will be made 5 minutes prior to your scheduled performance time.
4. Do not play while outside the warm-up area.
5. **Wireless devices may be tested only during contest intermissions and the 7-minute period that includes any band's 2-minute field exit and 5-minute field entrance.** This includes bands in warm-up and other areas around the stadium. There will be no "restarts", "delays", or "do-overs" due to any issue related to electronics. The GPISD athletic stadium utilizes one wireless frequency band which is **488.175 MHz**. The volume for this wireless channel will be set to "0" during the marching contest.
6. **Sideline percussion** will have a designated warm-up area (in close proximity to the pit entrance) and may do so only during their official warm-up time (see [contest maps](#)).
7. During a band's 2-minute field exit, the next band will move to the **goal line** while their front ensemble instruments & equipment move to the **20 yard line**. Each band will begin their 5-minute field entry from these designated starting points. Pre-performance staging may not interfere with or delay the previous band's 2-minute field exit (see [Pre-Performance Staging](#)).
8. The current version of the UIL *Constitution & Contest Rules* will be in effect. Please take time to carefully review all rules in preparation for this event. An online version of this document can be accessed at <http://www.uil texas.org/policy/constitution>.
9. The UIL contest office is located on the **first level** of the press box.
10. If you choose to have a staff member or parent record a video of your marching band's performance for educational purposes, you may do so from any available location in the home side seating area. **Individuals may not video record from the press box** as the adjudicators are on the second level video deck and the first level is enclosed.
11. The **director's meeting**, following prelims, will be inside the GPISD Athletics Department office (in the "Galena Park" south endzone).

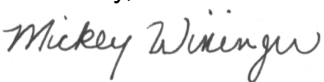
12. Sunday, November 3 will serve as the *rain date* in case inclement weather delays or postpones the certification of the contest on Saturday, November 2.
13. There will be a **rapid cooling zone** available inside the North Shore fieldhouse (located at field level by the north end zone).

SPECTATOR & CHAPERONE INFORMATION:

1. **Spectator parking is free.** Cars and all personal vehicles must enter from **Evanston LN** (third traffic light after the Beltway).
2. There is a **\$5 admission fee** for the UIL Area F marching contest (includes admission to both prelims & finals). The main admission gate is located at the northwest corner of the stadium. The admission gate will open at 8 AM.
3. **Ten (10) chaperone wristbands** per band will be provided to each participating head band director. Directors, staff, and parents assisting with sideline percussion, props or other equipment during your band's performance do not need a pass to enter at field level but band staff and parents must have wristbands to enter the stadium free of charge as spectators following your band's performance.
4. Bus drivers, principals and fine arts administrators will be admitted at no charge with their school district ID badge. Please have these individuals enter through the main admission gate.
5. Additional admission wristbands may be purchased online until Friday, November 1 at 10:00 AM. Online purchases can be made at <https://galenaparkisd.revtrak.net/fine-arts>. All wristbands ordered online may be picked up at the will-call table by the main admission gate.
6. It is recommended that a director, band booster officer, or parent purchase any additional passes needed either in advance online or at the main admission gate on the day of the event and distribute them to staff or parent-chaperones.
7. Galena Park ISD has instituted a CLEAR BAG POLICY to ensure visitor safety, along with quick and efficient entry into the GPISD stadium. This will limit the type of bags allowed to:
 - a. Clear Tote (12" x 6" x 12")
 - b. (1) Gallon clear plastic storage bag
 - c. Small purse or clutch (size not to exceed 5.5" x 8.5")
 - d. Diaper Bag (when accompanied by infant)

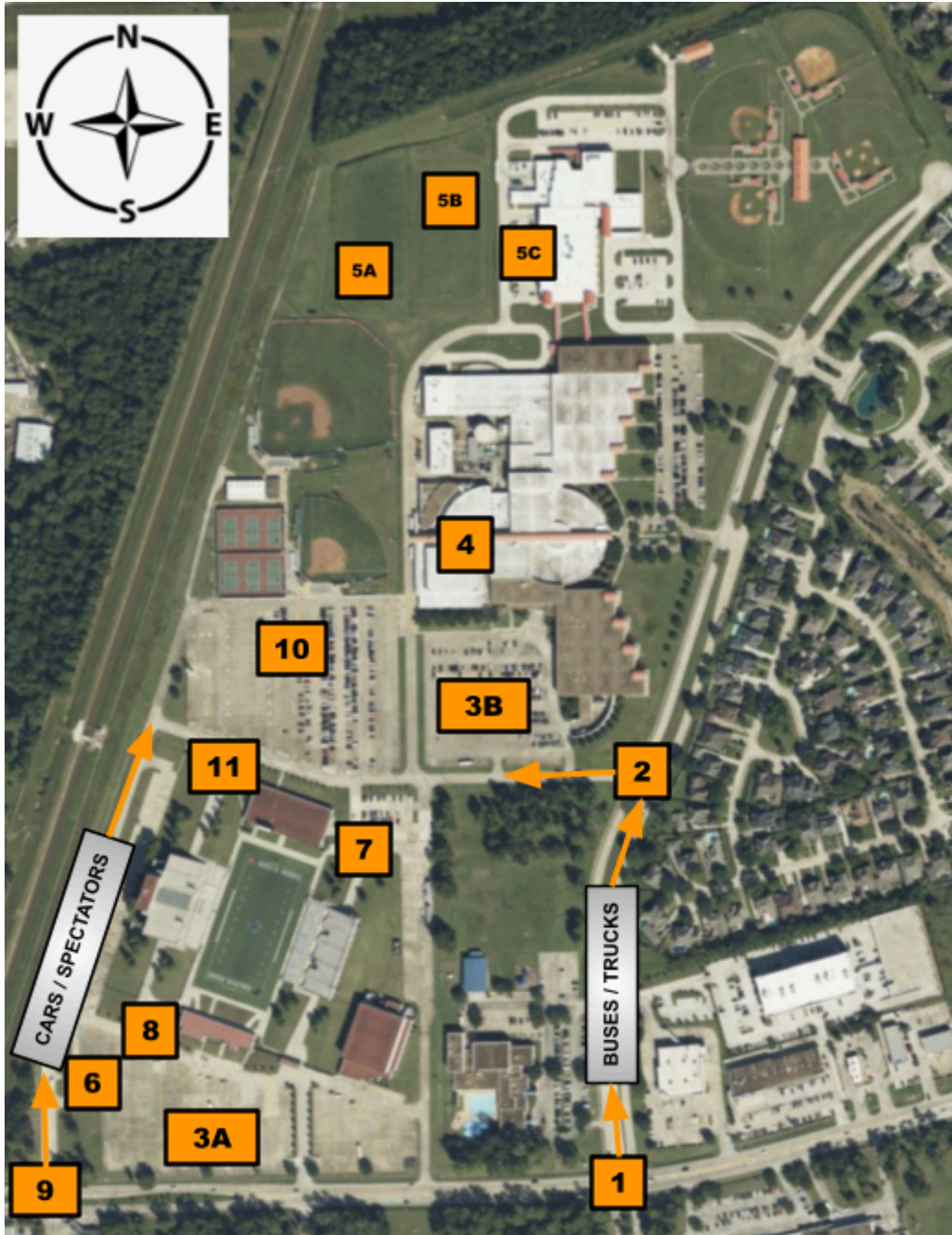
Best wishes to you and your students for a smooth and successful marching event. Please do not hesitate to contact me if you have any questions.

Sincerely,



Mickey Winger
Program Director for Fine Arts
Galena Park ISD

Galena Park ISD Athletic Stadium
15025 Wallisville RD, Houston, TX 77049



A description of each numbered location is provided below:

- | | |
|---|--|
| 1. Buses & trucks enter @ N. Castlegory RD | 6. Front Ensemble Warm-up Area (no battery perc.) |
| 2. Buses & trucks turn LEFT on Mustang LN | 7. Field Entrance (band) |
| 3. Bus & truck parking (3B will be used after parking in 3A reaches capacity) | 8. Field Exit / Sideline Perc, podiums, props entrance |
| 4. Restrooms & water fountains (NSSH cafeteria) | 9. Spectators enter @ Evanston LN |
| 5. Warm-up Areas (A, B, C) | 10. Spectator parking |
| | 11. Spectator admission gate |

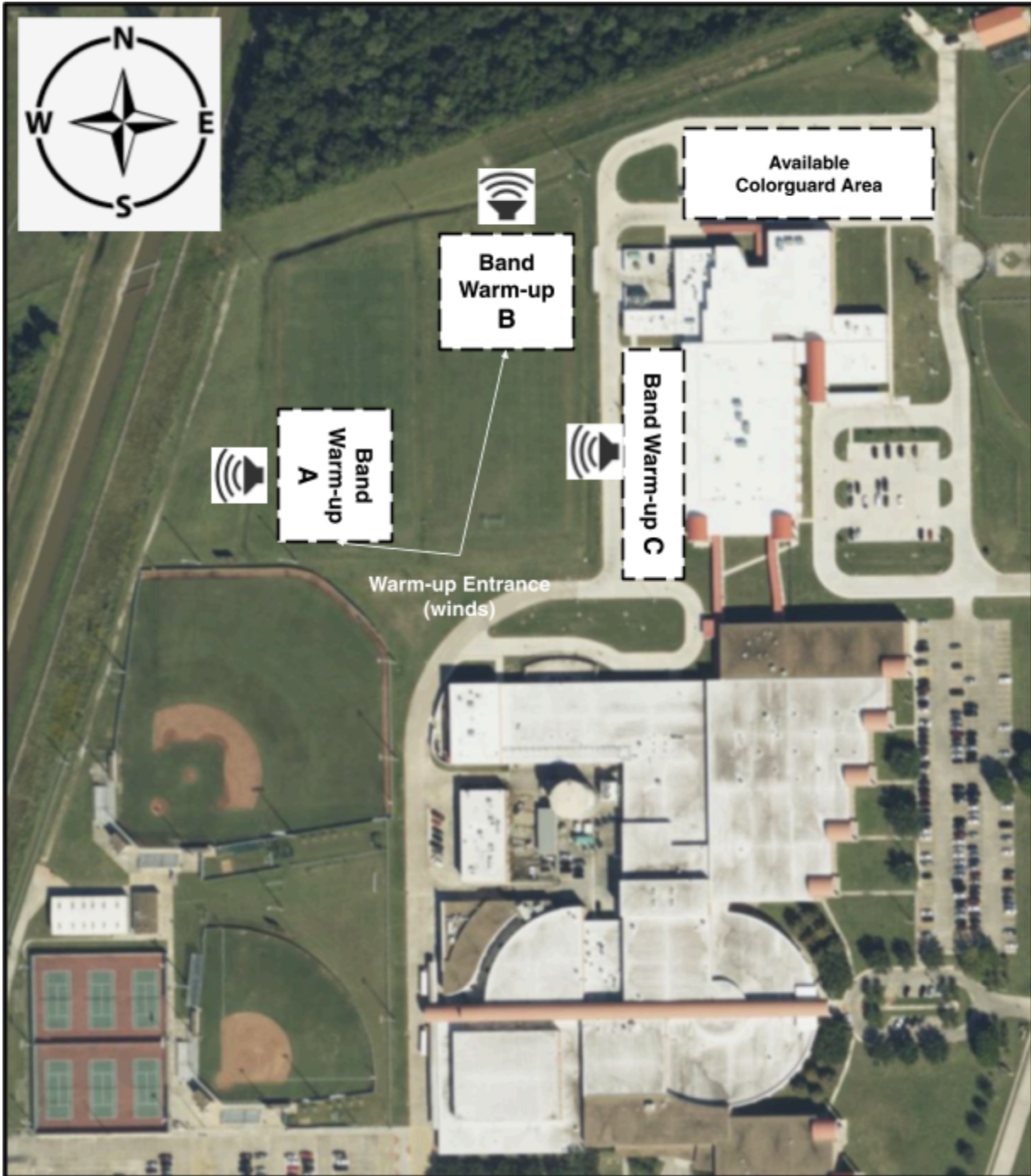
Galena Park ISD Athletic Stadium
15025 Wallisville RD, Houston, TX 77049



GPISD Athletic Stadium Map

- **Field Entrance** is located in the northeast corner of the stadium
- Following your band's performance, students will use the **field exit** in the southwest corner of the stadium & return to your buses / trucks (located in the bus & equipment truck parking lot)
- Student performers, band staff & chaperones (with wristbands) may enter the stadium concourse & seating area via the ramp nearest field exit & pit entrance (southwest corner labeled **band entrance**)

Galena Park ISD Athletic Stadium
15025 Wallisville RD, Houston, TX 77049



Warm-Up Area Map

- There are three large areas for band warm-up: Warm-up A, B & C (Warm-up C is on a parking lot)
- Please face WWs & Brass away from the other band warm-up area on the soccer fields (play in the direction of the 🗣️ symbol)
- Please position battery percussion as far away from other bands in the neighboring warm-up areas as possible
- Access to the two soccer fields is only available from the south, marked "warm-up entrance (winds)", as there is a drainage ditch that runs along the east, west & north perimeters
- There is an area available for colorguard at the far north end of the campus that can be used during warm-up