



WALL WASH SERIES



- 2700K - 6500K
- CCT
- RGB
- RGBW
- PIXEL

The flexible design allows the strip to fit perfectly onto outdoor curved surfaces of varying radii, achieving an even wall-washing lighting effect.

WALL WASH SERIES 3D - A

A flexible Wall Wash light capable of vertical & horizontal bending.

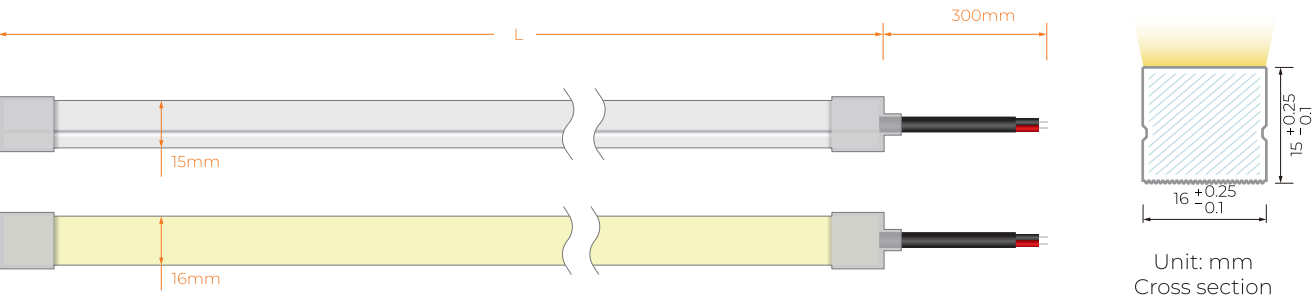
The silicone co-extrusion design offers excellent UV resistance, chemical stability and protection against abrasion.

Small cuttable lengths support widely customisable lengths for precise site installation.

Small, lightweight, and flexible the Wall Wash Series is easy to install. A range of beam angles is available to suit different applications.



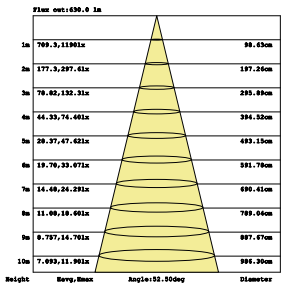
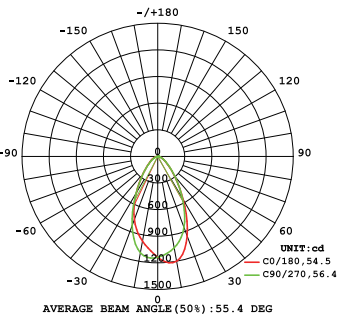
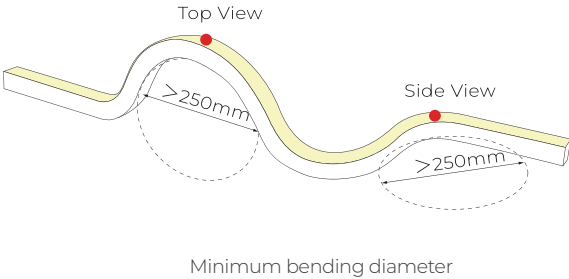
Dimensions



Technical Data

Working Voltage	DC24V
CRI	≥90
Rated Power/m	15w
Storage Temperature	-25 C ~60 C
Ambient Temperature	Tamin=-25 C, Tamax (45 C)
Beam Angle	45°/60°

Due to factors such as manufacturing variations, the characteristics of electronic devices and testing conditions, there is a 10% margin of error in the measured parameters.



Voltage
24v DC

UV
Protection

Consistency
One Bin

Length
5M

Waterproof
Grade
IP 67

Warranty
5 Years

Single colour
PARAMETER



CCT(K)	CRI	Voltage	Power(W)	Lumen (LM/M)	Efficiency (LM/W)	Unit Length (mm)	Max.Run Length (M)	CC/CV
2700K±150	≥90	DC24V	15	956	63.7	41.5	5M	CV
3000K±150	≥90	DC24V	15	929	61.9	41.5	5M	CV
3500K±250	≥90	DC24V	15	1022	68.1	41.5	5M	CV
4000K±250	≥90	DC24V	15	1053	70.2	41.5	5M	CV
5000K±300	≥90	DC24V	15	1051	70.1	41.5	5M	CV
6500K ⁺³⁰⁰ ₋₅₀₀	≥90	DC24V	15	996	66.4	41.5	5M	CV
Red	/	DC24V	15	187	12.5	41.5	5M	CV
Green	/	DC24V	15	1157	77.1	41.5	5M	CV
Blue	/	DC24V	15	369	24.6	41.5	5M	CV

*CV: Constant Voltage CC: Constant Current.
*The given colour temperature is the final neon strip colour temperature. All given data are for reference only, it can vary up to 10% because of tolerances.
*Maximum Run Length refers to single side power feed in serial connection to drive the length.

Cable Lead Options

Silicone end cap (IP67)

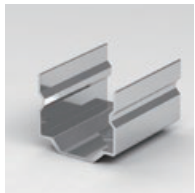


Front Cable Entry

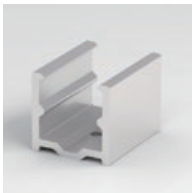
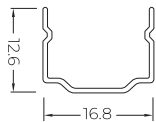


Closed End cap

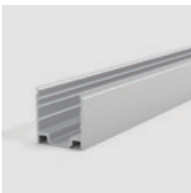
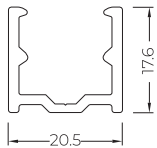
Accessories



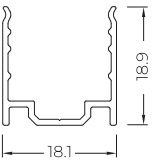
Stainless Steel Mounting clips
Length: 2cm



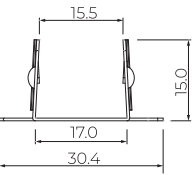
Aluminium Mounting clips
Length: 2cm



Aluminium Profile
Length: 1m/2m/3m



PC Profile
Length: 1m/2m/3m



WALL WASH SERIES 3D - B

A flexible Wall Wash light capable of vertical & horizontal bending.

The silicone co-extrusion design offers excellent UV resistance, chemical stability and protection against abrasion.

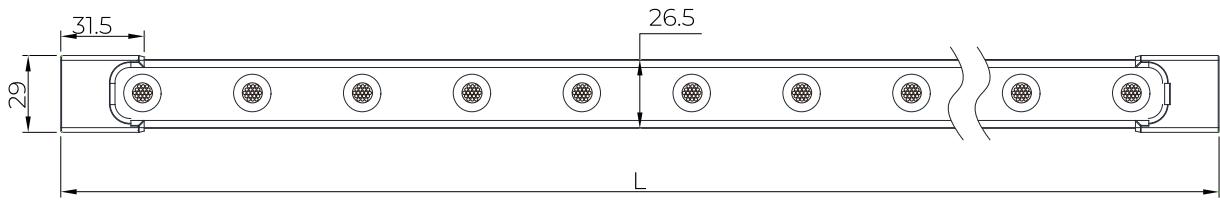
Small cuttable lengths support widely customisable lengths for precise site installation.

Durable and Reliable.

A range of beam angles is available to suit different applications.



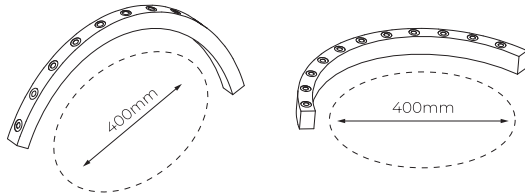
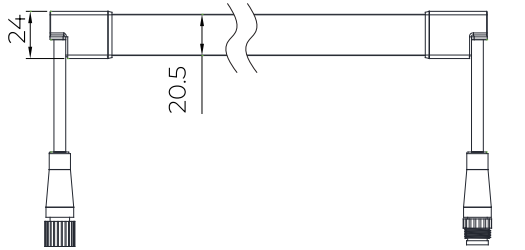
Dimensions



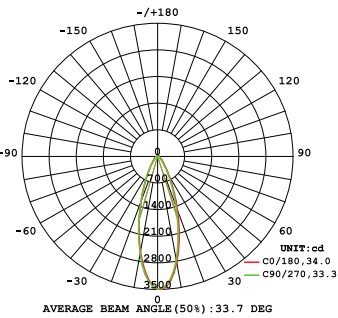
Technical Data

Working Voltage	DC24V
CRI	>80
LEDs / M	24LEDs
Storage Temperature	-25 C ~40 C
Warranty period	5 years
Beam Angle(50%)	15°/30°/50°/20°*35°/18°*20°/20°*55°
Control Mode	PWM
Max.run Length	5m
Cuttable Lenght	250mm
Waterproof level	IP65

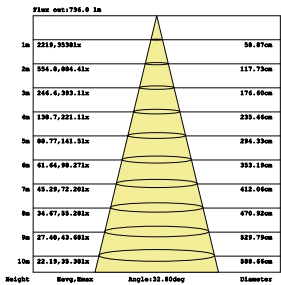
Due to factors such as manufacturing variations, the characteristics of electronic devices and testing conditions, there is a 10% margin of error in the measured parameters.



Bending diameter



Light Distribution Curve



Effective Average Illuminance

Voltage
24v DC

UV
Protection

Consistency
One Bin

Length
5M

Waterproof
Grade
IP 65

Warranty
5 Years

Single colour PARAMETER

CCT Tunable PARAMETER

RGB

PARAMETER

RGB

ELITE PIXEL

*CV: Constant Voltage CC: Constant Current.

*The given colour temperature is the final neon strip colour temperature. All given data are for reference only, it can vary up to 10% because of tolerances.

*Maximum Run Length refers to single side power feed in serial connection to drive the length.

CCT(K)	CRI	Voltage	Power(W)	Lumen (LM/M)	Efficiency (LM/W)	Max. Run Length (M)	CC/CV
4000K ±200K	80	DC24V	24	1480	61.7	5	CV
3000K ±200K	80	DC24V	24	1545	64.4	5	CV
2700K ±150K	80	DC24V	24	1580	65.8	5	CV
6500K ^{+300K} _{-500K}	80	DC24V	24	1525	63.5	5	CV

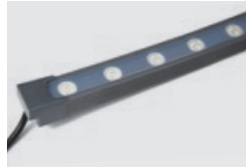
CCT(K)	CRI	Voltage	Power(W)	Lumen (LM/M)	Efficiency (LM/W)	Max. Run Length (M)	CC/CV
2700K ±150K	≥80	DC24V	12	850	70.8	5	CV
6500K ^{+300K} _{-500K}	≥80	DC24V	12	840	70.0	5	CV
2700K+6500K	--	DC24V	24	1600	66.7	5	CV

CCT(K)	CRI	Voltage	Power(W)	Lumen (LM/M)	Efficiency (LM/W)	Max. Run Length (M)	CC/CV
R	--	DC24V	6	150	25.0	5	CV
G	--	DC24V	6	360	60.0	5	CV
B	--	DC24V	6	65	10.8	5	CV
RGB	--	DC24V	18	515	28.6	5	CV

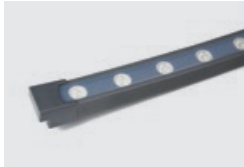
CCT/Color	Power (W/M)	Voltage	Lumen (LM/M)	Efficiency (LM/W)	Max. Run Length (M)	CC/CV
DMS512R	6	DC24V	145	24.2	5	CV
DMS512G	6	DC24V	360	60.0	5	CV
DMX512B	6	DC24V	65	10.8	5	CV
DMX512RGB	18	DC24V	515	28.6	5	CV

Cable Lead Options

Silicone end cap (IP65)



Front Cable Entry

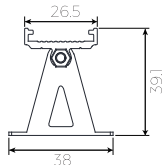


Closed End cap

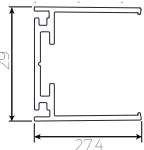
Accessories



Stainless Steel Mounting clips
Length: 2cm



Aluminium Mounting clips
Length: 2cm



Aluminium Profile
Length: 1m/2m/3m

WALL WASH SERIES 3D TV (PU)

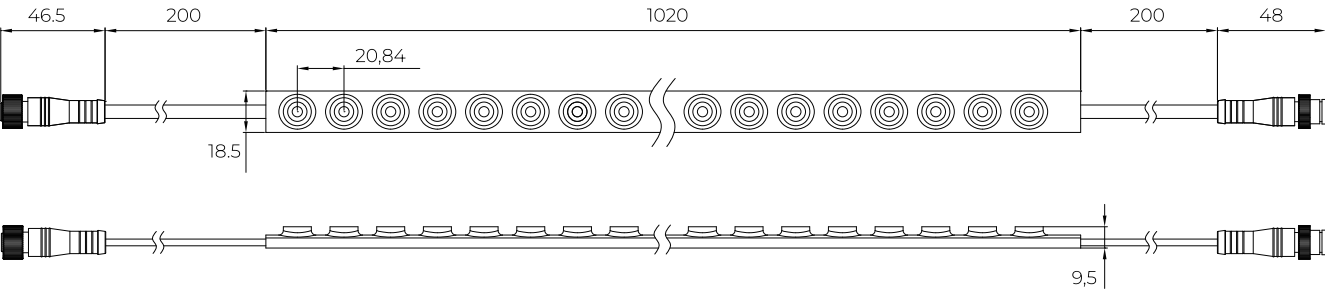
A flexible Wall Wash light capable of horizontal bending.

The polyethane design offers excellent UV resistance, chemical stability and protection against abrasion.

Small, lightweight, and flexible the Wall Wash Series is easy to install. A range of beam angles is available to suit different applications.



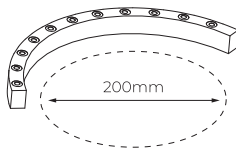
Dimensions



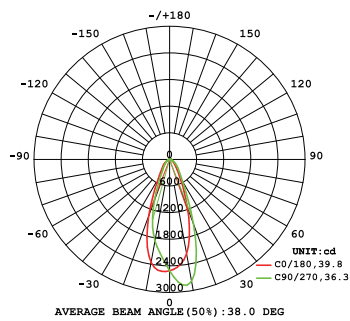
Technical Data

Working Voltage	DC24V
CRI	>90
Rated Power/m	18w
Storage Temperature	-25 C ~45 C
Ambient Temperature	Tamin=-25 C, Tamax (Tamax 45 C)
Bram angle	30°/45°/60°/20°*45°

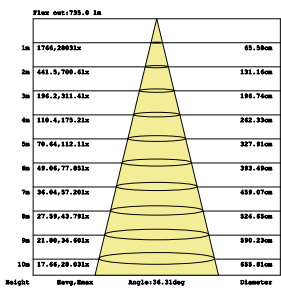
Due to factors such as manufacturing variations, the characteristics of electronic devices and testing conditions, there is a 10% margin of error in the measured parameters.



Bending diameter



Light Distribution Curve



Effective Average Illuminance



Voltage
24v DC



UV
Protection



Consistency
One Bin



Length
5M



Waterproof
Grade
IP 67



Warranty
5 Years

CCT	2700K ±100	3000K ±100	4000K ±200	6500K ±200K
Lumen/m	1851lm	2167lm	1915lm	1949lm

Cable Lead Options

Integral end cap (IP67)



Front Cable Entry

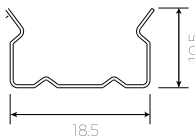


Closed End cap

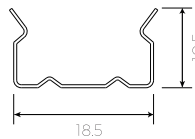
Accessories



Aluminium Profile
Length: 1m/2m/3m



Aluminium Mounting clips
Length: 2cm



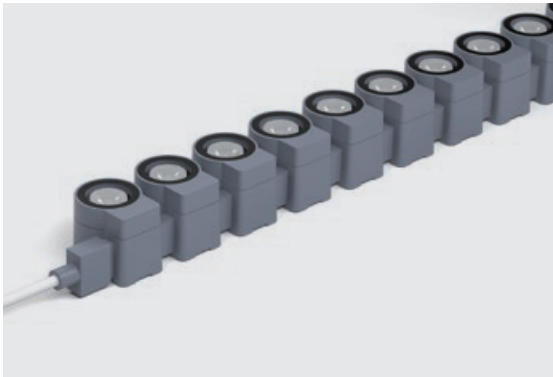
WALL WASH SERIES SV

A flexible Wall Wash light capable of horizontal bending.

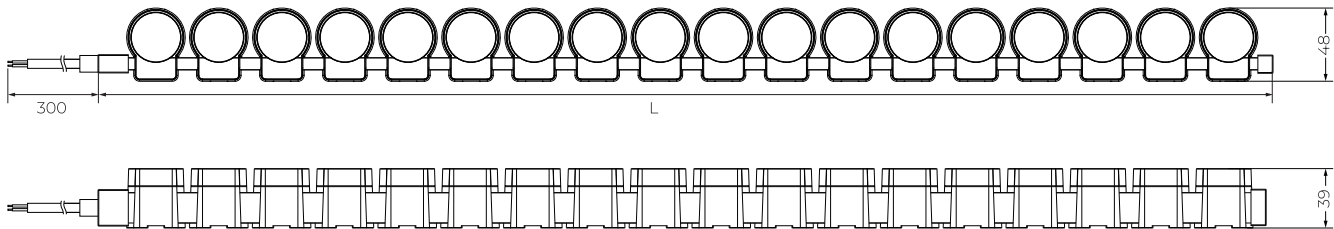
Features silicone integrated moulding with an aluminium alloy shell, offering an IP67 protection rating.

48W/M and various beam angle options.

Supports smart controls and dimming, such as DMX512, DALI and ON/OFF.



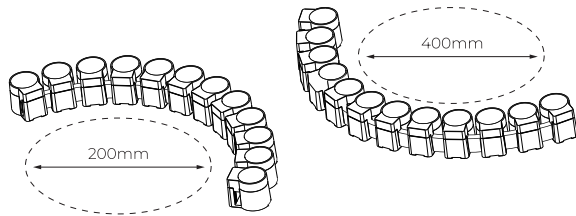
Dimensions



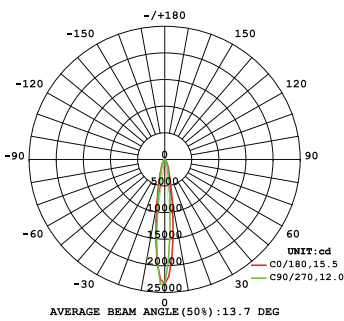
Technical Data

Working Voltage	DC24V
CRI	>80
Rated Power/m	48w
Storage Temperature	-25 C~40 C
Beam Angle(50%)	10°/24°/36°/60°/10°30°/10°60°
Max.run Length	3.5m
Control Mode	PWM/DMX512
Waterproof level	IP67

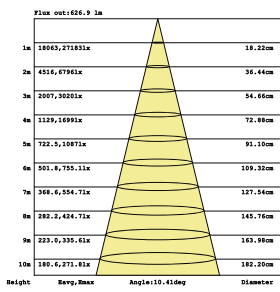
Due to factors such as manufacturing variations, the characteristics of electronic devices and testing conditions, there is a 10% margin of error in the measured parameters.



Bending diameter



Light Distribution Curve



Effective Average Illuminance

Voltage
24v DC

UV
Protection

Consistency
One Bin

Length
3.5M

Waterproof
Grade
IP 67

Warranty
3-5 Years

Single colour
PARAMETER



CCT(K)	CRI	Voltage	Power(W)	Lumen (LM/M)	Efficiency (LM/W)	Max. Run Length (M)	CC/CV
1800K	--	DC24V	48	2312	48.1	3.5	CC
2200K	80	DC24V	48	2270	47.2	3.5	CC
2700K	80	DC24V	48	2787	58.0	3.5	CC
3000K	80	DC24V	48	3165	65.9	3.5	CC
4000K	80	DC24V	48	3339	69.5	3.5	CC
5000K	80	DC24V	48	3582	74.6	3.5	CC
6500K	80	DC24V	48	3442	71.7	3.5	CC
R	--	DC24V	48	1891	39.3	3.5	CC
G	--	DC24V	48	3376	70.3	3.5	CC
B	--	DC24V	48	978	20.3	3.5	CC

DIGITAL
PARAMETER



RGBW

CCT(K)	Voltage	Power(W)	Pixel	Signal Type	Unit Length (mm)	Max. Run Length (M)	CC/CV
R	DC24V	12	4	DMX512	250	3.5	CC
G	DC24V	12	4	DMX512	250	3.5	CC
B	DC24V	12	4	DMX512	250	3.5	CC
W(3000K)	DC24V	12	4	DMX512	250	3.5	CC
RGBW	DC24V	48	4	DMX512	250	3.5	CC

*CV: Constant Voltage CC: Constant Current.

*The given colour temperature is the final neon strip colour temperature. All given data are for reference only, it can vary up to 10% because of tolerances.

*Maximum Run Length refers to single side power feed in serial connection to drive the length.

Cable Lead Options

End Cap (IP67)



Front Cable Entry



Side Cable Entry

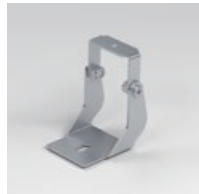
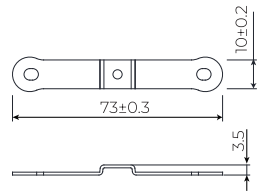


Closed End Cap

Accessories



Clips
Length: 73mm



Adjustable Clips
Length: 44.8mm

