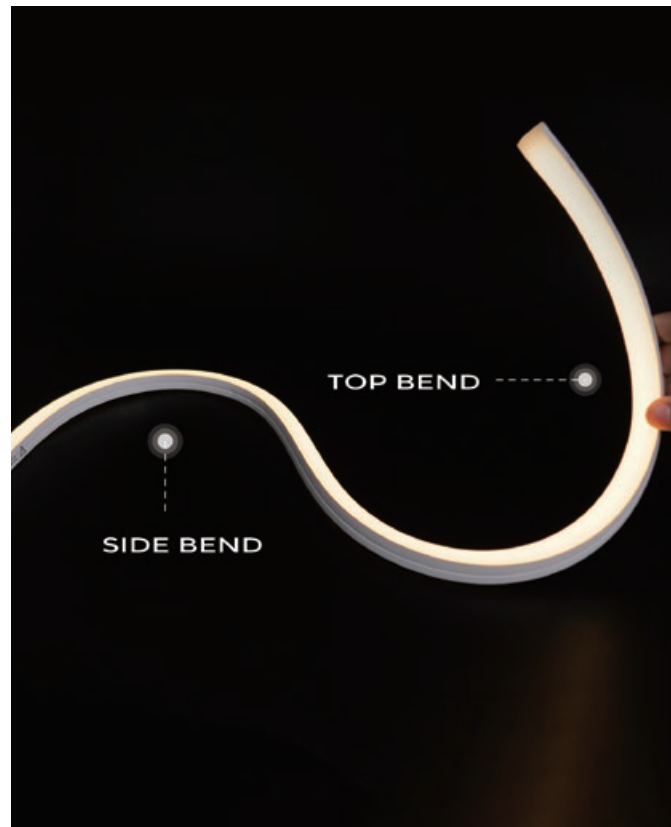


AGILE NEON



2100K-6500K

High light transmittance and environmentally friendly silicone material, combined with an advanced integrated extrusion moulding process, ensure enhanced durability and performance. The design allows for flexible vertical and horizontal bending, supported by dual protective layers provided by the PCB's anti-breakage technology, offering increased reliability and longevity.



Omni Via



AGILE NEON 1010

The AGILE NEON has a silicone co-extrusion design that offers excellent UV resistance, chemical stability and protection against abrasion.

Provides vertical and horizontal bending with IP67 protection, making it suitable for both indoor and outdoor use.

Small cuttable lengths support widely customisable lengths for precise site installation.

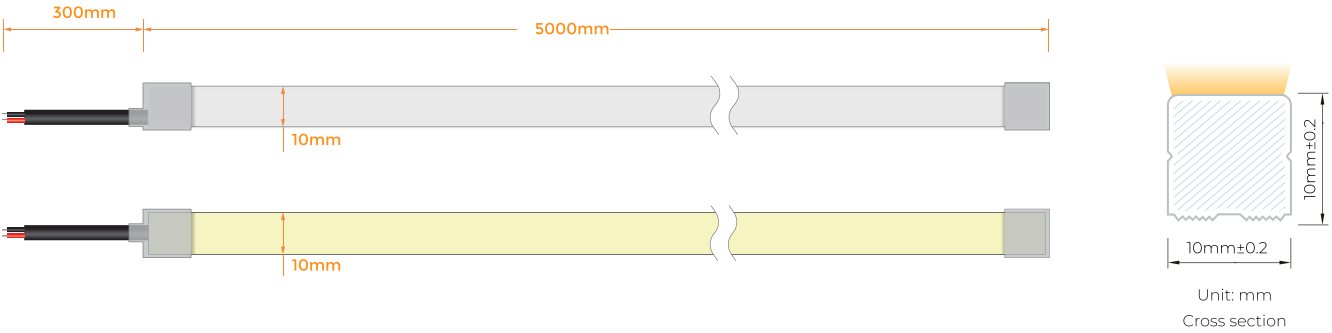
Flexible LED neon with uniform light output and dimmable functionality.

Dust-free matt finish and Lumileds LED< SDCM2 are optional.

5 years warranty, long-life LED> 50,000 hrs, 1 Bin.



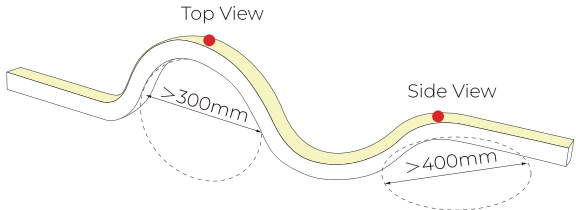
Dimensions



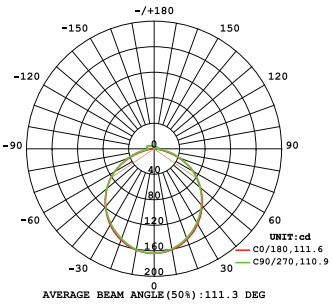
Technical Data

Working Voltage	DC24V
CRI	>90
Rated Power/m	5w/10w
Storage Temperature	-25 C ~60 C
Ambient Temperature	Tamin=-25 C, Tamax 50 C

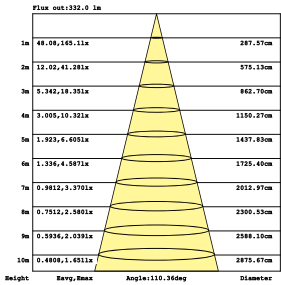
Due to factors such as manufacturing variations, the characteristics of electronic devices and testing conditions, there is a 10% margin of error in the measured parameters.



Minimum bending diameter



Light Distribution Curve



Effective Average Illuminance

Voltage
24v DC

UV
Protection

Consistency
One Bin

Length
5M

Waterproof
Grade
IP 67

Warranty
5 Years

Single colour PARAMETER



CCT(K)	CRI	Voltage	Power(W)	Lumen (LM/M)	Efficiency (LM/W)	Unit Length (mm)	Max.Run Length (M)	CC/CV
2700K±150	≥90	DC24V	10	464	46.4	35.7	5	CV
3000K±150	≥90	DC24V	10	486	48.6	35.7	5	CV
3500K±200	≥90	DC24V	10	491	49.1	35.7	5	CV
4000K ^{+400 -200}	≥90	DC24V	10	506	50.6	35.7	5	CV
5000K ^{+500 -300}	≥90	DC24V	10	506	50.6	35.7	5	CV
6500K ^{+200 -600}	≥90	DC24V	10	493	49.3	35.7	5	CV
Red	--	DC24V	10	168	16.8	35.7	5	CV
Green	--	DC24V	10	445	44.5	35.7	5	CV
Blue	--	DC24V	10	95	9.5	35.7	5	CV
Yellow	--	DC24V	10	110	11.0	35.7	5	CV
Orange	--	DC24V	10	147	14.7	35.7	5	CV
Pink	--	DC24V	10	371	37.1	35.7	5	CV

*CV: Constant Voltage CC: Constant Current.

*The given colour temperature is the final neon strip colour temperature. All given data are for reference only, it can vary up to 10% because of tolerances.

*Maximum Run Length refers to single side power feed in serial connection to drive the length.

Cable Lead Options

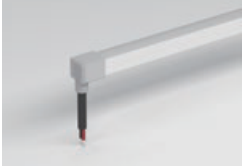
Silicone end cap (IP67)



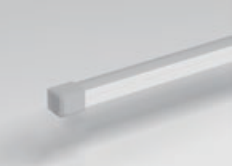
Front Cable Entry



Side Cable Entry

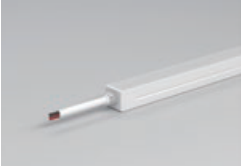


Bottom Cable Entry



Closed End Cap

Integral end cap (IP67)



Front Cable Entry



Side Cable Entry



Bottom Cable Entry

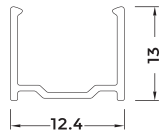


Closed End Cap

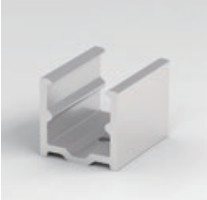
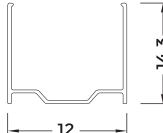
Accessories



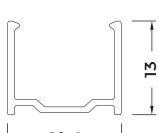
Aluminium Profile
Length: 1m/2m/3m



PC Profile
Length: 1m/2m/3m



Aluminium Mounting clips
Length: 2cm



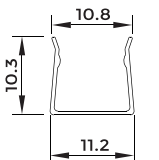
PVC Cable
2PIN



Silicone End Cap
Type: Front/Side/Bottom/Closed



Flexible Curved Profile
Length: 0.5m



AGILE NEON 1615

The AGILE NEON has a silicone co-extrusion design that offers excellent UV resistance, chemical stability and protection against abrasion.

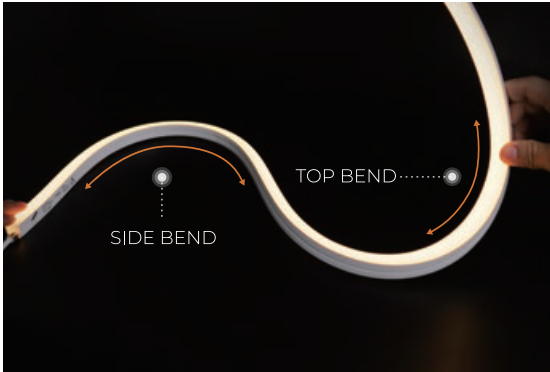
Provides vertical and horizontal bending with IP67 protection, making it suitable for both indoor and outdoor use.

Small cuttable lengths support widely customisable lengths for precise site installation.

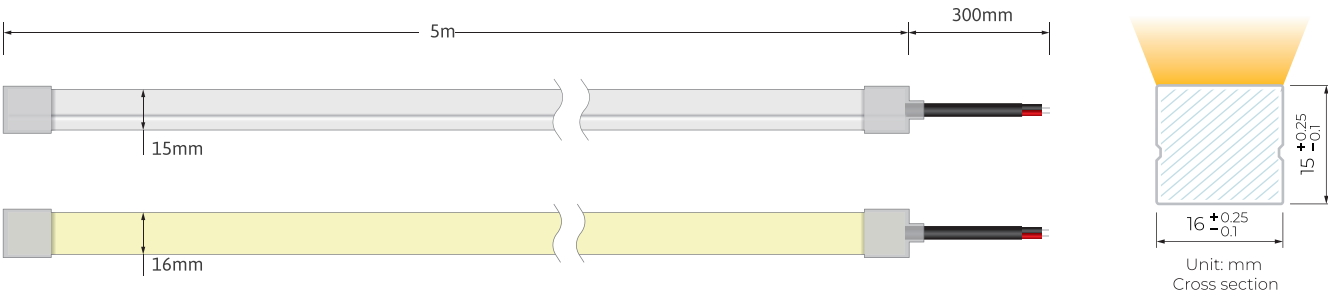
Flexible LED neon with uniform light output and dimmable functionality.

Dust-free matt finish and Lumileds LED< SDCM2 are optional.

5 years warranty, long-life LED> 50,000 hrs, 1 Bin.



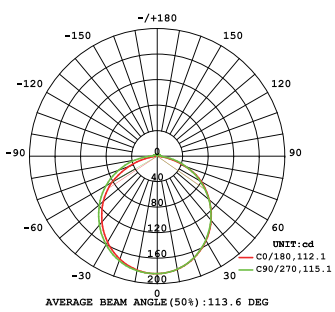
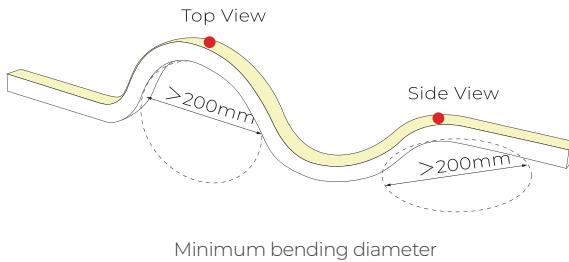
Dimensions



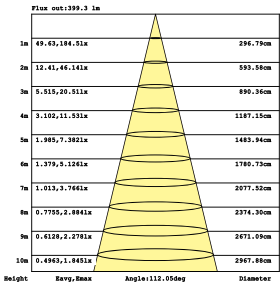
Technical Data

Working Voltage	DC24V	
CRI	>90	
Rated Power/m	5w/10w	
Storage Temperature	-25 C ~60 C	
Ambient Temperature	T _{amin} = -25 C , T _{amax} 55 C	
Output	Low Output	Std Output
Power(W/m)	5w	10w
Max. Ambient tempt.(T _{amax})	55 C	45 C

Due to factors such as manufacturing variations, the characteristics of electronic devices and testing conditions, there is a 10% margin of error in the measured parameters.



Light Distribution Curve



Effective Average Illuminance

Voltage
24v DC

UV
Protection

Consistency
One Bin

Length
5M

Waterproof
Grade
IP 67

Warranty
5 Years

Single colour PARAMETER



CCT(K)	CRI	Voltage	Power(W)	Lumen (LM/M)	Efficiency (LM/W)	Unit Length (mm)	Max.Run Length (M)	CC/CV
2100K±150	≥90	DC24V	10	600	60	50	5	CV
2400K±150	≥90	DC24V	10	630	63	50	5	CV
2700K±150	≥90	DC24V	10	670	67	50	5	CV
3000K±150	≥90	DC24V	10	700	70	50	5	CV
3500K±200	≥90	DC24V	10	730	73	50	5	CV
4000K ^{+400 -200}	≥90	DC24V	10	730	73	50	5	CV
5000K ^{+500 -300}	≥90	DC24V	10	750	75	50	5	CV
6500K ^{+200 -600}	≥90	DC24V	10	730	73	50	5	CV
Red	--	DC24V	10	310	31	50	5	CV
Green	--	DC24V	10	530	53	50	5	CV
Blue	--	DC24V	10	140	14	50	5	CV
Yellow	--	DC24V	10	260	26	50	5	CV
Pink	--	DC24V	10	480	48	50	5	CV

*CV: Constant Voltage CC: Constant Current.
*The given colour temperature is the final neon strip colour temperature. All given data are for reference only, it can vary up to 10% because of tolerances.
*Maximum Run Length refers to single side power feed in serial connection to drive the length.

Cable Lead Options

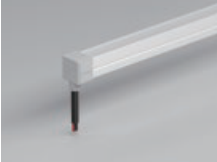
Silicone end cap (IP67)



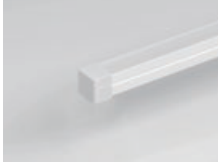
Front Cable Entry



Side Cable Entry

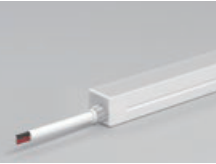


Bottom Cable Entry



Closed End Cap

Integral end cap (IP67)

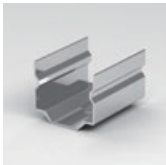


Front Cable Entry

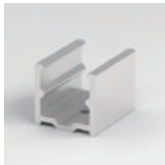
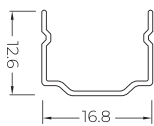


Closed End Cap

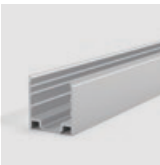
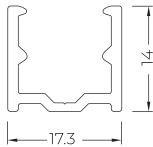
Accessories



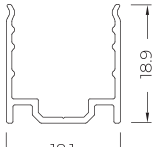
Stainless Steel Mounting clips
Length: 2cm



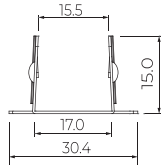
Aluminium Mounting clips
Length: 2cm



Aluminium Profile
Length: 1m/2m/3m



Flexible Curved Profile
Length: 0.5m



Silicone End Cap
Type: Front/Side/Bottom/Closed

AGILE NEON 1617

The AGILE NEON has a silicone co-extrusion design that offers excellent UV resistance, chemical stability and protection against abrasion.

Provides vertical and horizontal bending with IP67 protection, making it suitable for both indoor and outdoor use.

Small cuttable lengths support widely customisable lengths for precise site installation.

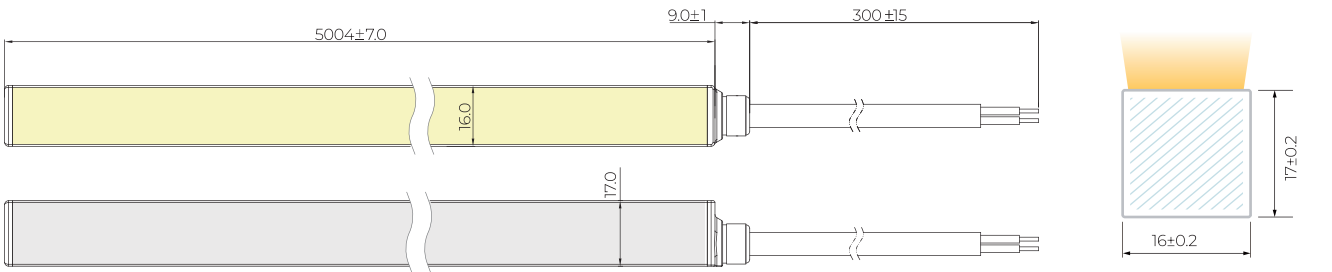
Flexible LED neon with uniform light output and dimmable functionality.

Dust-free matt finish and Lumileds LED< SDCM2 are optional.

5 years warranty, long-life LED> 50,000 hrs, 1 Bin.



Dimensions

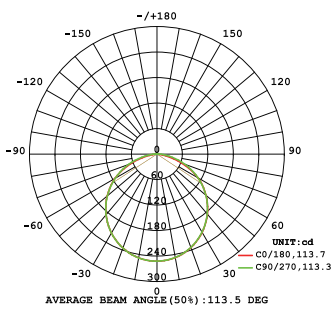
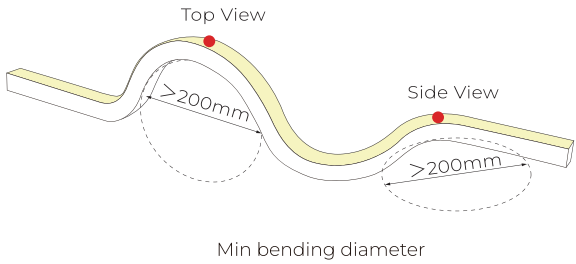


Technical Data

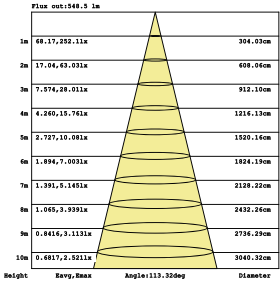
Working Voltage	DC24V
CRI	>90
Rated Power/m	10w
Storage Temperature	-25 C ~60 C
Ambient Temperature	T _{amin} = -25 C , T _{amax} 55 C

Output	Std Output
Power(W/m)	10w
Max. Ambient tempt.(T _{amax})	45 C

Due to factors such as manufacturing variations, the characteristics of electronic devices and testing conditions, there is a 10% margin of error in the measured parameters.



Light Distribution Curve



Effective Average Illuminance

Voltage
24v DC

UV
Protection

Consistency
One Bin

Length
5M

Waterproof
Grade
IP 67

Warranty
5 Years

Single colour
PARAMETER



CCT(K)	CRI	Voltage	Power(W)	Lumen (LM/M)	Efficiency (LM/W)	Unit Length (mm)	Max Run Length (M)	CC/CV
2700K±150	≥90	DC24V	10	737.6	73.8	50	5	CV
3000K±150	≥90	DC24V	10	713.2	71.3	50	5	CV
3500K±200	≥90	DC24V	10	740.6	74.1	50	5	CV
4000K±300	≥90	DC24V	10	812.2	81.2	50	5	CV
5000K±400	≥90	DC24V	10	800.1	80.0	50	5	CV
6500K±400	≥90	DC24V	10	739.0	73.9	50	5	CV
Red	--	DC24V	10	335.7	33.6	50	5	CV
Green	--	DC24V	10	933.1	93.3	50	5	CV
Blue	--	DC24V	10	145.0	14.5	50	5	CV
Yellow	--	DC24V	10	251.4	25.1	50	5	CV
Pink	--	DC24V	10	668.3	66.8	50	5	CV
Orange	--	DC24V	10	391.1	39.1	50	5	CV

CCT Tunable
PARAMETER



CCT(K)	CRI	Voltage	Power(W)	Lumen (LM/M)	Efficiency (LM/W)	Unit Length (mm)	Max Run Length (M)	CC/CV
2700K±200	≥90	DC24V	5	368.3	73.7	71.43	5	CV
6500K±500	≥90	DC24V	5	375.0	75.0	71.43	5	CV
4000K±400	≥90	DC24V	10	740.2	74.0	71.43	5	CV

RGB
STANDARD



CCT(K)	CRI	Voltage	Power(W)	Lumen (LM/M)	Efficiency (LM/W)	Unit Length (mm)	Max Run Length (M)	CC/CV
R	--	DC24V	3.3	71.9	21.8	62.5	5	CV
G	--	DC24V	3.3	208.4	63.1	62.5	5	CV
B	--	DC24V	3.3	40.6	12.3	62.5	5	CV
RGB	--	DC24V	10	323.1	32.3	62.5	5	CV

RGBW
STANDARD



CCT(K)	CRI	Voltage	Power(W)	Lumen (LM/M)	Efficiency (LM/W)	Unit Length (mm)	Max Run Length (M)	CC/CV
R	--	DC24V	3.75	69.3	18.4	62.5	5	CV
G	--	DC24V	3.75	214.2	57.1	62.5	5	CV
B	--	DC24V	3.75	41.8	11.1	62.5	5	CV
4000K±300	≥90	DC24V	3.75	177.1	47.2	62.5	5	CV
RGBW	--	DC24V	15	497.7	33.1	62.5	5	CV

RGB
ELITE PIXEL



CCT(K)	IC Model	Voltage	Power(W)	Lumen (LM/M)	Efficiency (LM/W)	Unit Length (mm)	Max Run Length (M)	CC/CV
R	WS2811	DC24V	4.8	67.7	14.1	100	5	CV
G	WS2811	DC24V	4.8	190.1	39.61	100	5	CV
B	WS2811	DC24V	4.8	29.5	6.15	100	5	CV
RGB	WS2811	DC24V	12.5	399.9	22.59	100	5	CV

*CV: Constant Voltage CC: Constant Current.
*The given colour temperature is the final neon strip colour temperature. All given data are for reference only, it can vary up to 10% because of tolerances.
*Maximum Run Length refers to single side power feed in serial connection to drive the length.

Cable Lead Options

Integral end cap (IP67)



Accessories

