

ELITE LONG RUN NEON

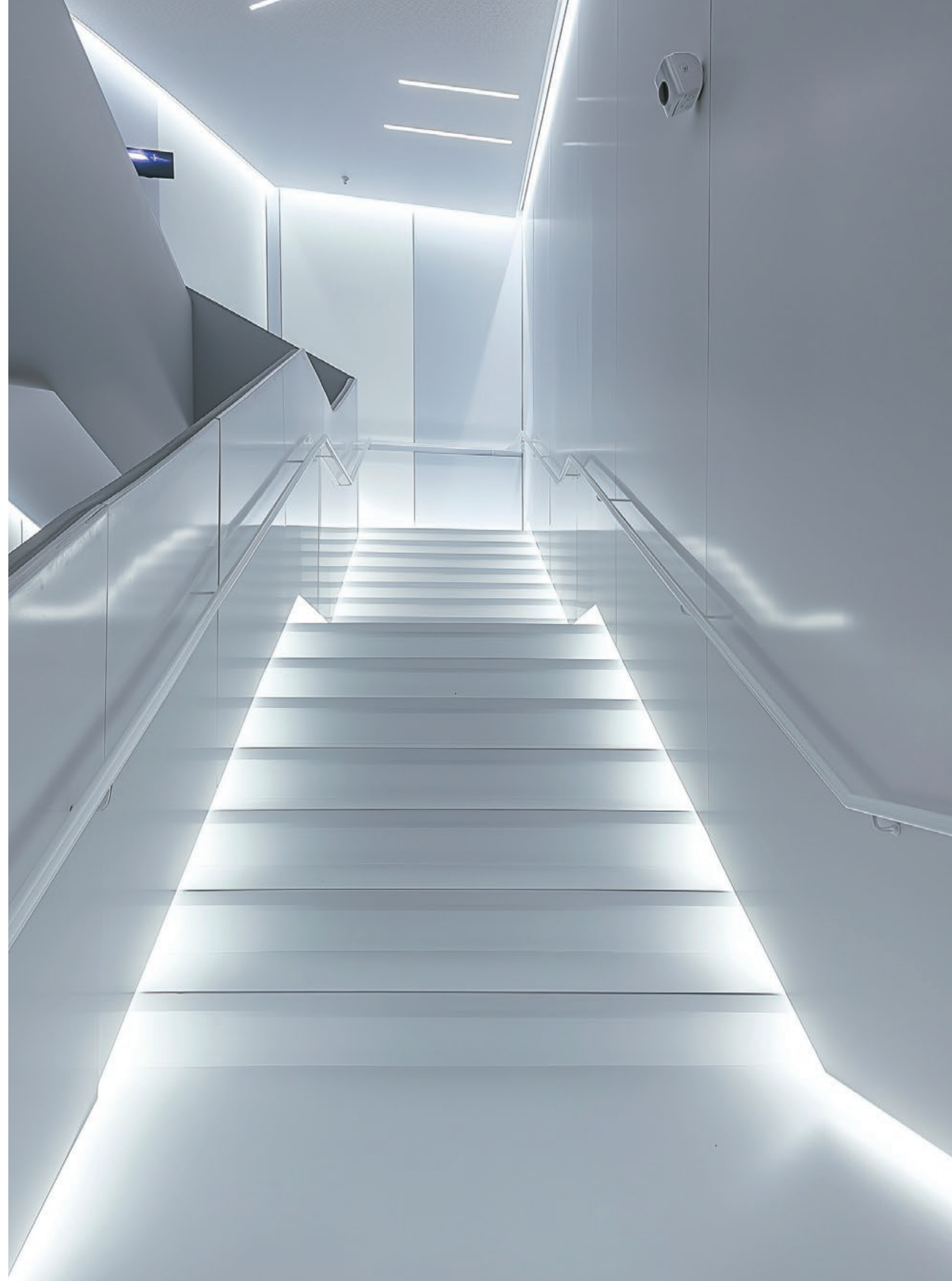


1800K-6500K

It is crafted from Dow Chemical SILASTIC™ ET-7021 silicone rubber, offering high transparency and strength. Made from environmentally friendly silicone using an integrated extrusion process, it features a unique optical design for uniform, shadow-free illumination. With IP67 protection, it resists salt solutions, acids, alkalis, corrosive gases, and UV. Boasting excellent toughness, a sleek and elegant appearance, it is both refined and distinctive.



Omni Via



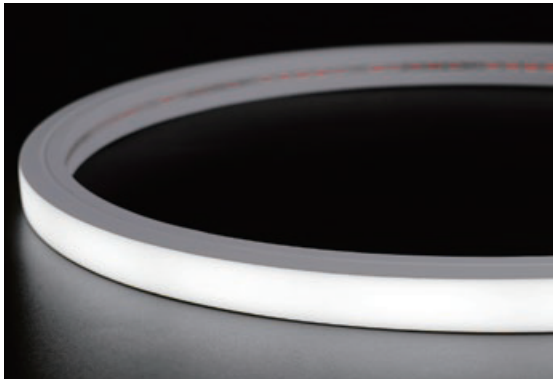
ELITE LONG RUN NEON 1615

ELITE LONG RUN NEON is a 230V LED neon with small cuttable lengths to support widely customisable lengths for precise site installation.

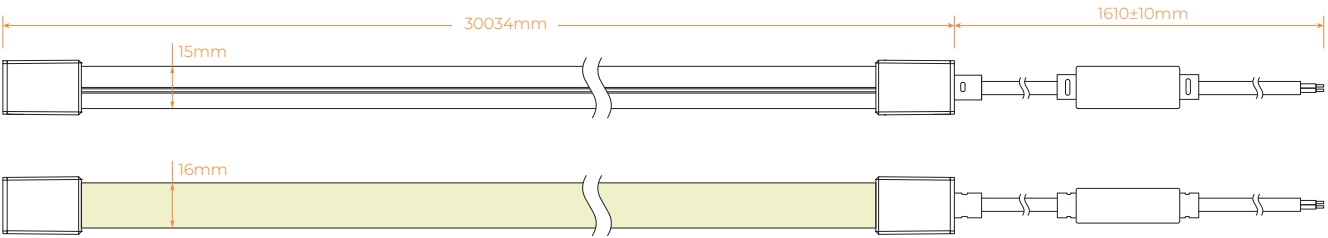
The long run length is greater than 30m, with a production length of up to 30m.

Dust-free matt finish is optional.

Long-life LED > 50,000 hrs, SDCM3, 1 Bin.



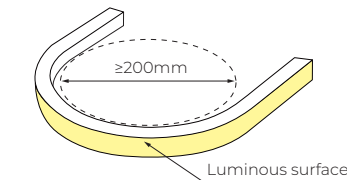
Dimensions



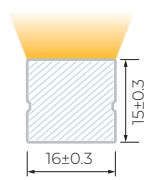
Technical Data

Working Voltage	AC230V
CRI	≥90
LED PIN Temperature	Max. 65 C
Storage Temperature	-25 C ~60 C
Ambient Temperature	Tamin=-25 C , Tamax (45 C)

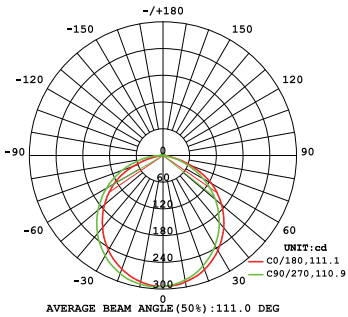
Due to factors such as manufacturing variations, the characteristics of electronic devices and testing conditions, there is a 10% margin of error in the measured parameters.



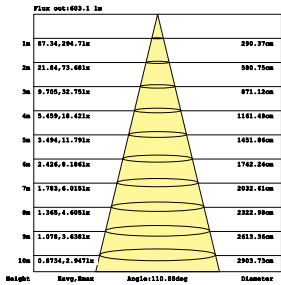
Minimum bending diameter



Unit: mm
Cross section



Light Distribution Curve



Effective Average Illuminance

Voltage
230v AC

UV
Protection

Consistency
One Bin

Length
0.5-30M

Waterproof
Grade
IP 67

Warranty
5 Years

Single colour PARAMETER



CCT(K)	CRI	SDCM	Voltage (V)	Power (W/M)	Lumen (LM/M)	Efficiency (LM/W)	Unit cut (MM)	Max.run length(M)
1800K±100	≥90	--	AC230	12	476	39.7	100	30
2400K±150	≥90	--	AC230	12	599	49.9	100	30
2700K±150	≥90	--	AC230	12	644	53.7	100	30
3000K±150	≥90	--	AC230	12	665	55.4	100	30
3500K±200	≥90	--	AC230	12	693	57.8	100	30
4000K±300	≥90	--	AC230	12	684	57.0	100	30
5000K±400	≥90	--	AC230	12	689	57.4	100	30
6500K±400	≥90	--	AC230	12	689	57.4	100	30

*CV: Constant Voltage CC: Constant Current.

*The given colour temperature is the final neon strip colour temperature. All given data are for reference only, it can vary up to 10% because of tolerances.

*Maximum Run Length refers to single side power feed in serial connection to drive the length.

Cable Lead Options

Solder Free End Cap without screws (IP67)

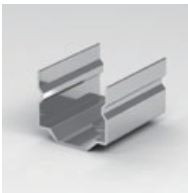


Front Cable Entry

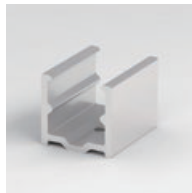
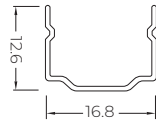


closed end cap

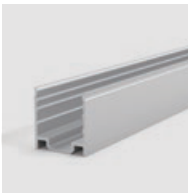
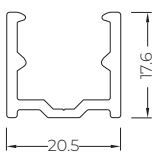
Accessories



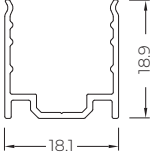
Stainless Steel Mounting clips
Length: 2cm



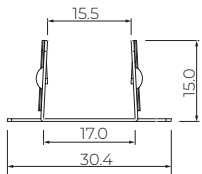
Aluminium Mounting clips
Length: 2cm



Aluminium Profile
Length: 1m/2m/3m



PC Profile
Length: 1m/2m/3m



ELITE LONG RUN NEON 1220

ELITE LONG RUN NEON is a 230V LED neon with small cuttable lengths to support widely customisable lengths for precise site installation.

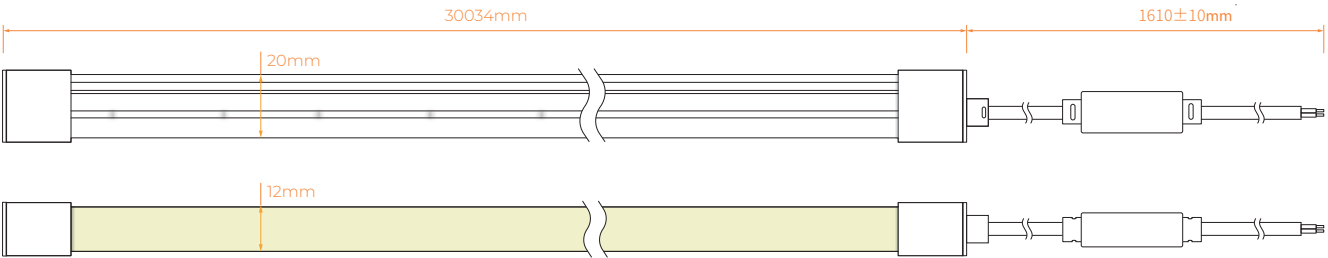
The long run length is greater than 30m, with a production length of up to 30m.

Dust-free matt finish is optional.

Long-life LED > 50,000 hrs, SDCM3, 1 Bin.



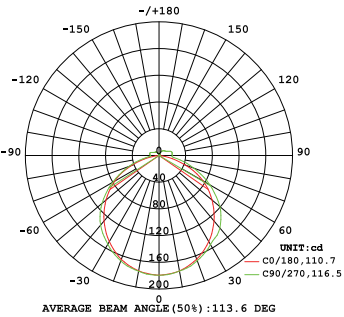
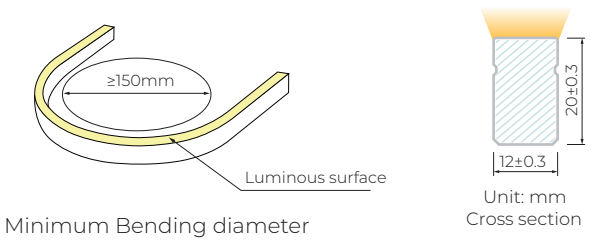
Dimensions



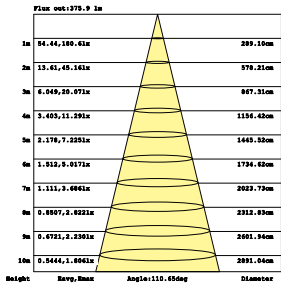
Technical Data

Working Voltage	AC230V
CRI	≥90
LED PIN Temperature	Max. 65 °C
Storage Temperature	-25 °C ~60 °C
Ambient Temperature	Tamin=-25 °C, Tamax (45 °C)

Due to factors such as manufacturing variations, the characteristics of electronic devices and testing conditions, there is a 10% margin of error in the measured parameters.



Light Distribution Curve



Effective Average Illuminance

Voltage

230v AC

UV

Protection

Consistency

One Bin

Length

0.5-30M

Waterproof Grade

IP 67

Warranty

5 Years

Single colour
PARAMETER



CCT(K)	CRI	SDCM	Voltage (V)	Power (W/M)	Lumen (LM/M)	Efficiency (LM/W)	Unit cut (MM)	Max.run length(M)
1800K±100	≥90	--	AC230	12	349	29.1	100	30
2400K±150	≥90	--	AC230	12	427	35.6	100	30
2700K±150	≥90	--	AC230	12	487	40.6	100	30
3000K±150	≥90	--	AC230	12	503	41.9	100	30
3500K±200	≥90	--	AC230	12	521	43.4	100	30
4000K±300	≥90	--	AC230	12	519	43.3	100	30
5000K±400	≥90	--	AC230	12	529	44.1	100	30
6500K±400	≥90	--	AC230	12	516	43.0	100	30

*CV: Constant Voltage CC: Constant Current.
*The given colour temperature is the final neon strip colour temperature. All given data are for reference only, it can vary up to 10% because of tolerances.
*Maximum Run Length refers to single side power feed in serial connection to drive the length.

Cable Lead Options

Solder Free End Cap without screws (IP67)

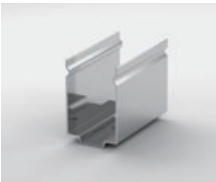


Front Cable Entry

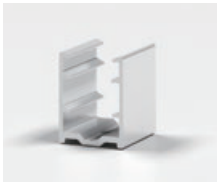
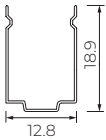


closed end cap

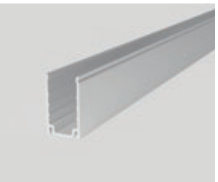
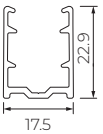
Accessories



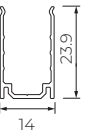
Stainless Steel Mounting clips
Length: 2cm



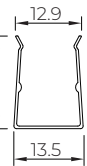
Aluminium Mounting clips
Length: 2cm



Aluminium Profile
Length: 1m/2m/3m



PC Profile
Length: 1m/2m/3m



Silicone End Cap
Type: Front/Side/Bottom/Closed

ELITE LONG RUN NEON 1607

ELITE LONG RUN NEON is a 230V LED neon with small cuttable lengths to support widely customisable lengths for precise site installation.

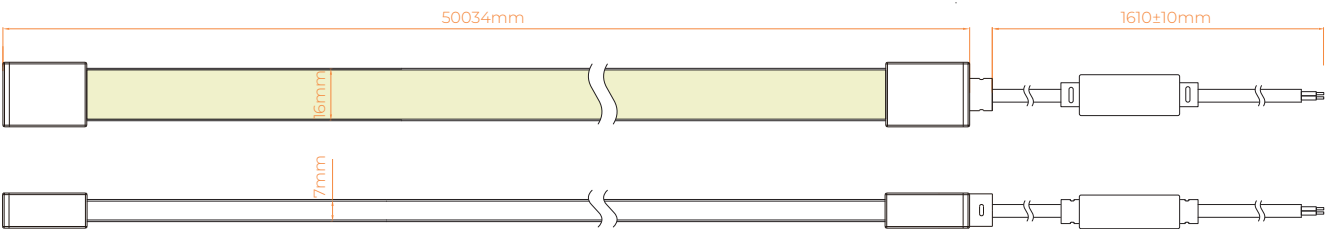
The long run length is greater than 30m, with a production length of up to 30m.

Dust-free matt finish is optional.

Long-life LED > 50,000 hrs, SDCM3, 1 Bin.



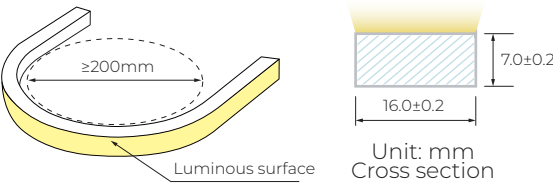
Dimensions



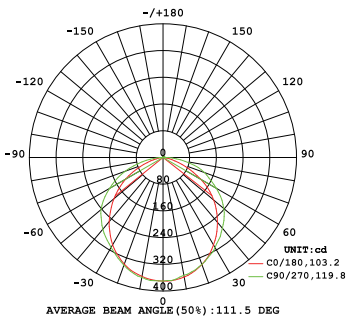
Technical Data

Working Voltage	AC230V
CRI	≥90
LED PIN Temperature	Max. 65 C
Storage Temperature	-25 C ~60 C
Ambient Temperature	Tamin=-25 C , Tamax (45 C)

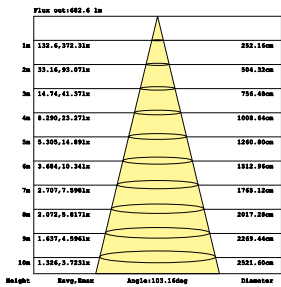
Due to factors such as manufacturing variations, the characteristics of electronic devices and testing conditions, there is a 10% margin of error in the measured parameters.



Minimum bending diameter



Light Distribution Curve



Effective Average Illuminance

Voltage

230v AC

UV

Protection

Consistency

One Bin

Length

0.5-30M

Waterproof Grade

IP 67

Warranty

5 Years

Single colour PARAMETER



CCT(K)	CRI	SDCM	Voltage (V)	Power (W/M)	Lumen (LM/M)	Efficiency (LM/W)	Unit cut (MM)	Max.run length(M)
1800K±100	≥90	--	AC230	12	575	47.9	100	50
2400K±150	≥90	--	AC230	12	726	60.5	100	50
2700K±150	≥90	--	AC230	12	810	67.5	100	50
3000K±150	≥90	--	AC230	12	791	65.9	100	50
3500K±200	≥90	--	AC230	12	840	70.0	100	50
4000K±300	≥90	--	AC230	12	913	76.0	100	50
5000K±400	≥90	--	AC230	12	863	71.9	100	50
6500K±400	≥90	--	AC230	12	869	72.4	100	50

Cable Lead Options

Solder Free End Cap without screws (IP67)



Front Cable Entry



Closed End cap

Silicone end cap(IP67)



Front Cable Entry

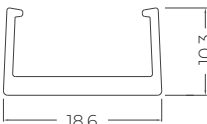


Closed End cap

Accessories



Aluminium Mounting clips
Length: 2cm

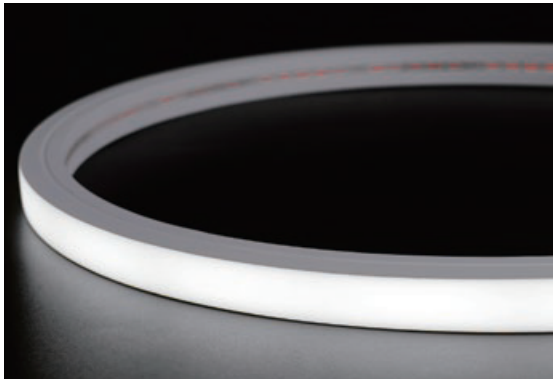


ELITE LONG RUN NEON 1615

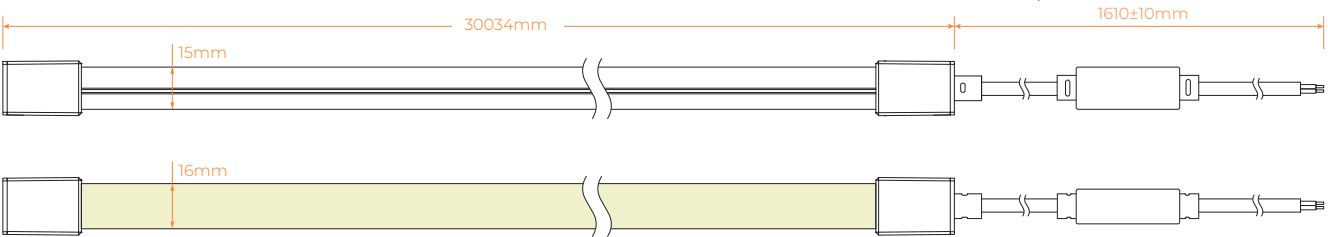
ELITE LONG RUN NEON is a 12V LED neon with small cuttable lengths to support widely customisable lengths for precise site installation.

Dust-free matt finish is optional.

Long-life LED > 50,000 hrs, SDCM3, 1 Bin.



Dimensions



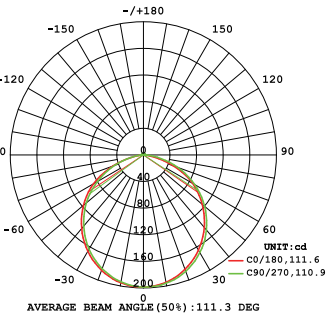
Technical Data

Working Voltage	AC12V
CRI	≥90
LED PIN Temperature	Max. 65°C
Storage Temperature	-25°C ~60°C
Ambient Temperature	Tamin=-25°C, Tamax (Table below)

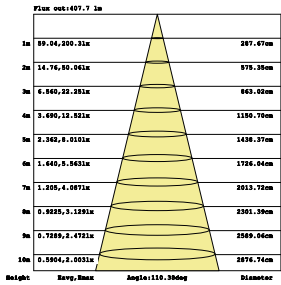
Specification

Power(w/m)	10w/m
Efficacy(lm/w)@4000K	54.2lm/w
Max Ambient Temperature	45°C

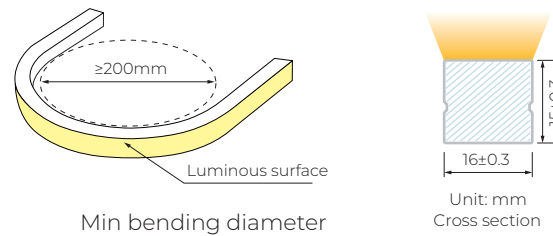
Due to factors such as manufacturing variations, the characteristics of electronic devices and testing conditions, there is a 10% margin of error in the measured parameters.



Light Distribution Curve



Effective Average Illuminance



Min bending diameter

Unit: mm
Cross section

Single colour PARAMETER



CCT(K)	CRI	Input voltage(V)	Power (W/M)	Lumen (LM/M)	Efficiency (LM/W)	Unit cut (MM)	Max.run length(M)	CC/CV
2700K±150	≥90	AC12V	10	504	50.4	35.71	5	CV
3000K±150	≥90	AC12V	10	525	52.5	35.71	5	CV
4000K±300	≥90	AC12V	10	542	54.2	35.71	5	CV
5000K±400	≥90	AC12V	10	524	52.4	35.71	5	CV
6500K±400	≥90	AC12V	10	524	52.4	35.71	5	CV

*CV: Constant Voltage CC: Constant Current.

*The given colour temperature is the final neon strip colour temperature. All given data are for reference only, it can vary up to 10% because of tolerances.

*Maximum Run Length refers to single side power feed in serial connection to drive the length.

Cable Lead Options

Integral end cap (IP67)



Front Cable Entry
Solder free end cap (IP67)



Side Cable Entry



Bottom Cable Entry



Closed End cap



Front Cable Entry
Solder Free End Cap without screws (IP67)



Side Cable Entry



Bottom Cable Entry



Closed End cap



Front Cable Entry
Silicone end cap (IP67)



Side Cable Entry



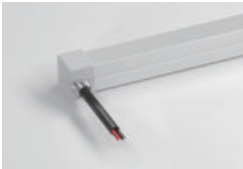
Bottom Cable Entry



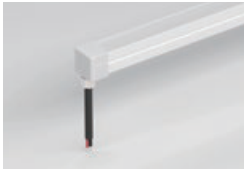
Closed End cap



Front Cable Entry



Side Cable Entry

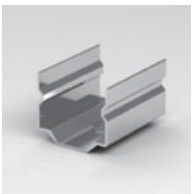


Bottom Cable Entry



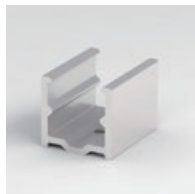
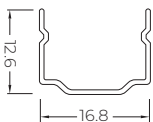
Closed End cap

Accessories



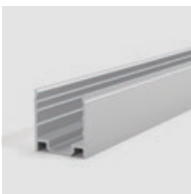
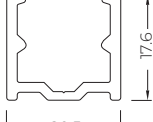
Stainless Steel Mounting clips

Length: 2cm



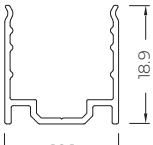
Aluminium Mounting clips

Length: 2cm



Aluminium Profile

Length: 1m/2m/3m



PC Profile

Length: 1m/2m/3m

