



SILICONE NEON STRIP

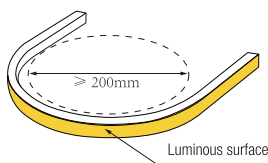
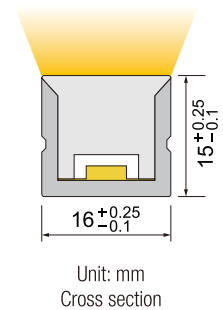
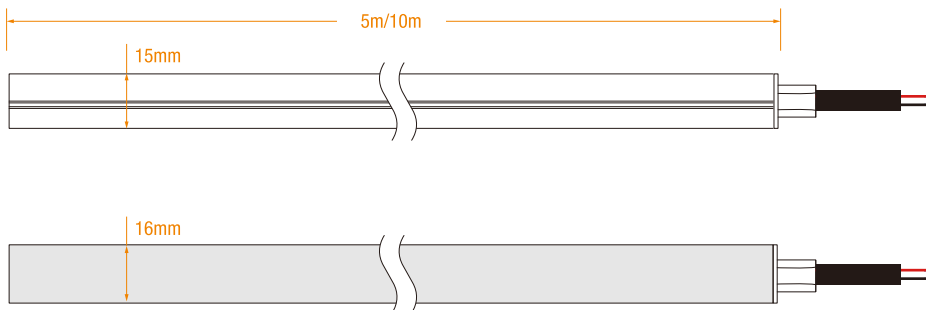
PRODUCT SPECIFICATION

Top bend

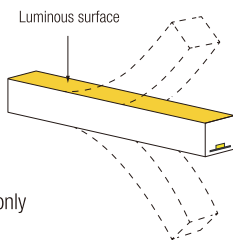


- It is made of Dow Chemical SILASTIC™ ET-7021 silicone rubber, which provides high transparency and high strength.
- Unique black silicone body, it's easier to blend into different installation environment.
- Unique optical light distribution structure design, uniform lighting surface and no shadow.
- IP67 protection level, salt solution resistance, acids & alkalis and UV resistance.
- Excellent toughness, simple and stylish appearance, delicate and unique.
- 3 years warranty, working life \geq 30000 hours.

Dimension structure



Min bending diameter



Bend vertical only

Electrical Parameter

| | |
|---------------------|---------------------------------|
| Voltage | DC24V |
| LED PIN Temperature | Max. 65 °C |
| Storage Temperature | -25 °C ~ 60 °C |
| Ambient Temperature | Min. -25°C, Max (Table below) |
| CRI | > 90 |

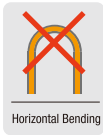
Specification

| | | | |
|-------------------------|---------|-------|-------|
| Power(w/m) | 5w/m | 10w/m | 15w/m |
| Efficacy(lm/w)@4000K | 2.2lm/w | 2lm/w | 2lm/w |
| Max Ambient Temperature | 55°C | 45°C | 35°C |

Due to the tolerance of the production and electrical components, output value and electrical power can vary up to 10%.

Length Standard

| | |
|------------------|---------------------|
| Length Range (M) | 0M<Neon Strip(L)≤5M |
| Final Length | L+6 |
| Tolerance(mm) | ±7 |



- The maximum series length refers to the maximum single end power supply length of the constant current strip under the condition of standard 30cm wire .
- For the load capacity of the solder free end cap, please refer to <The Maximum Load Capacity of Power Cables>
- The given color temperature is the temperature of finished product.
- The given data are typical values due to the tolerances of the production process and the electrical components, values for light output and electrical power can vary up to 10%.
- All products can be dimmed; the dimmer' s voltage should conform to the rated voltage of the led light. The output frequency of the dimmer of the constant-current led light should be less than 2K Hz, and the output PWM can control the led light.

Single color (Lm/m)

| CCT(K) | CRI | Voltage | Power(W) | Lumen (LM/M) | Efficiency (LM/W) | Unit Length (mm) | Max.Run Length (M) | CC/CV |
|---------------------------------------|-----|---------|----------|--------------|-------------------|------------------|--------------------|-------|
| 2100K±100 | ≥90 | DC24V | 10 | 19.5 | 1.95 | 50 | 17 (CC) | CC/CV |
| 2400K±100 | ≥90 | DC24V | 10 | 20.7 | 2.07 | 50 | 17 (CC) | CC/CV |
| 2700K±100 | ≥90 | DC24V | 10 | 20.6 | 2.06 | 50 | 17 (CC) | CC/CV |
| 3000K±100 | ≥90 | DC24V | 10 | 21.1 | 2.11 | 50 | 17 (CC) | CC/CV |
| 3500K ⁺²⁰⁰ ₋₁₀₀ | ≥90 | DC24V | 10 | 20.4 | 2.04 | 50 | 17 (CC) | CC/CV |
| 4000K ⁺³⁰⁰ ₋₂₀₀ | ≥90 | DC24V | 10 | 20.7 | 2.07 | 50 | 17 (CC) | CC/CV |
| Red | -- | DC24V | 10 | 11.5 | 1.15 | 50 | 18 (CC) | CC/CV |
| Green | -- | DC24V | 10 | 18 | 1.8 | 50 | 17 (CC) | CC/CV |
| Blue | -- | DC24V | 10 | 2.8 | 0.28 | 50 | 17 (CC) | CC/CV |
| Yellow | -- | DC24V | 10 | 18 | 1.8 | 50 | 18 (CC) | CC/CV |













CCT Tunable (Lm/m)

| CCT(K) | CRI | Voltage | Power(W) | Lumen (LM/M) | Efficiency (LM/W) | Unit Length (mm) | Max.Run Length (M) | CC/CV |
|--------|-----|---------|----------|--------------|-------------------|------------------|--------------------|-------|
| WW | ≥90 | DC24V | 5 | 10.65 | 2.13 | 50 | 5 | CV |
| W | ≥90 | DC24V | 5 | 10.55 | 2.11 | 50 | 5 | CV |
| W+WW | ≥90 | DC24V | 10 | 20.9 | 2.09 | 50 | 5 | CV |

RGB (Lm/m)

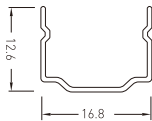
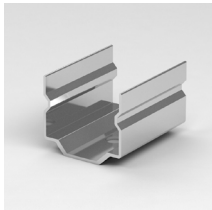
| CCT(K) | CRI | Voltage | Power(W) | Lumen (LM/M) | Efficiency (LM/W) | Unit Length (mm) | Max.Run Length (M) | CC/CV |
|--------|-----|---------|----------|--------------|-------------------|------------------|--------------------|-------|
| R | -- | DC24V | 3.3 | 3.201 | 0.97 | 62.5 | 5 | CV |
| G | -- | DC24V | 3.3 | 5.148 | 1.56 | 62.5 | 5 | CV |
| B | -- | DC24V | 3.3 | 0.924 | 0.28 | 62.5 | 5 | CV |
| RGB | -- | DC24V | 10 | 8.7 | 0.87 | 62.5 | 5 | CV |

Cable

| Cable Type | Schematic Diagram | Specification | Core | Electrical Properties |
|----------------|---|--|---|----------------------------------|
| PVC Cable |  | OD: 5.0mm / Inner core: 20AWG |  | Red V+, Black V- |
| |  | OD: 5.0mm / Inner core: 20AWG |  | Brown V+, White W, Yellow WW |
| |  | OD: 5.5mm / Inner core: 20AWG |  | Black V+, Blue B, Green G, Red R |
| Waterproof |  | OD: 5.0mm / Inner core: 20AWG M12Male / Female connecto |  | Red V+, Black V- |
| Connector with |  | OD: 5.0mm / Inner core: 20AWG M12Male / Female connecto |  | Brown V+, White W, Yellow WW |
| PVC Cable |  | OD: 5.5mm / Inner core: 20AWG M12Male / Female connecto |  | Black V+, Blue B, Green G, Red R |

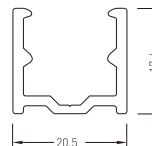
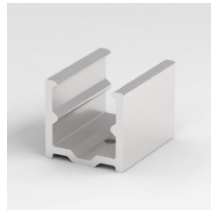
Mounting Way

Mounting Clips



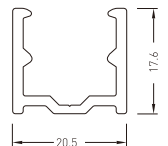
Dimension:
20x12.6x16.8mm
Accessories:
Screw M3x15mm

Aluminium Mounting clips



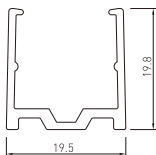
Dimension:
20x20.5x17.6mm
Accessories:
Screw M3x15mm

Aluminium Profile



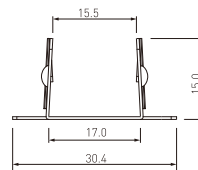
Dimension:
1000(±5)x20.5x17.6mm
Accessories:
Screw M3x15mm

PC Profile



Dimension:
1000(±5)x19.5x19.8mm
Accessories:
Screw M3x15mm

Curved aluminum profile



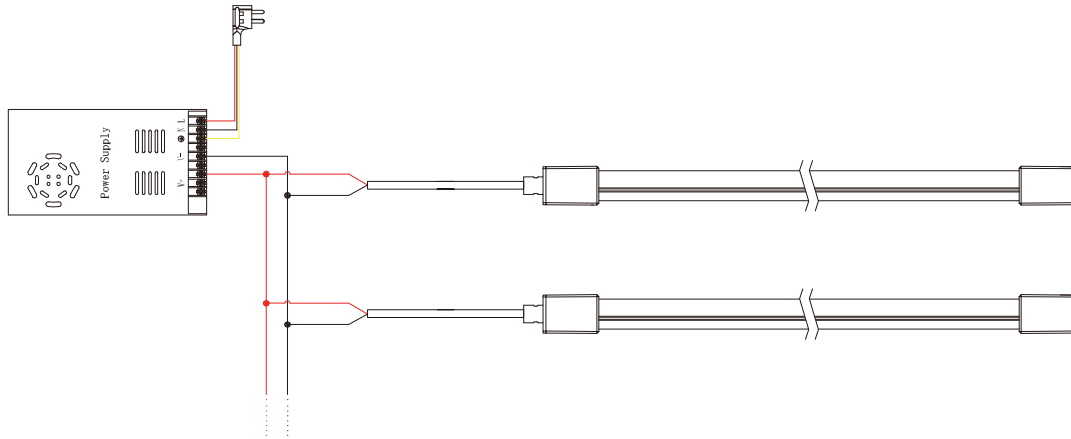
Dimension:
51.4x30.4x15mm
Accessories:
Screw M3x15mm

Suspension Installation

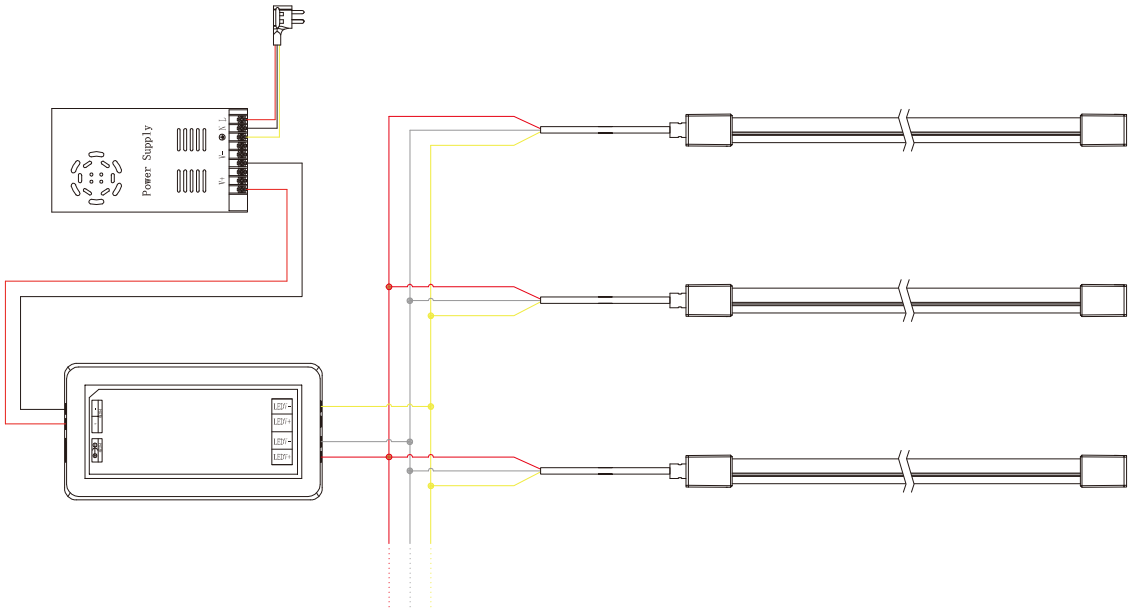


• Use with the profile

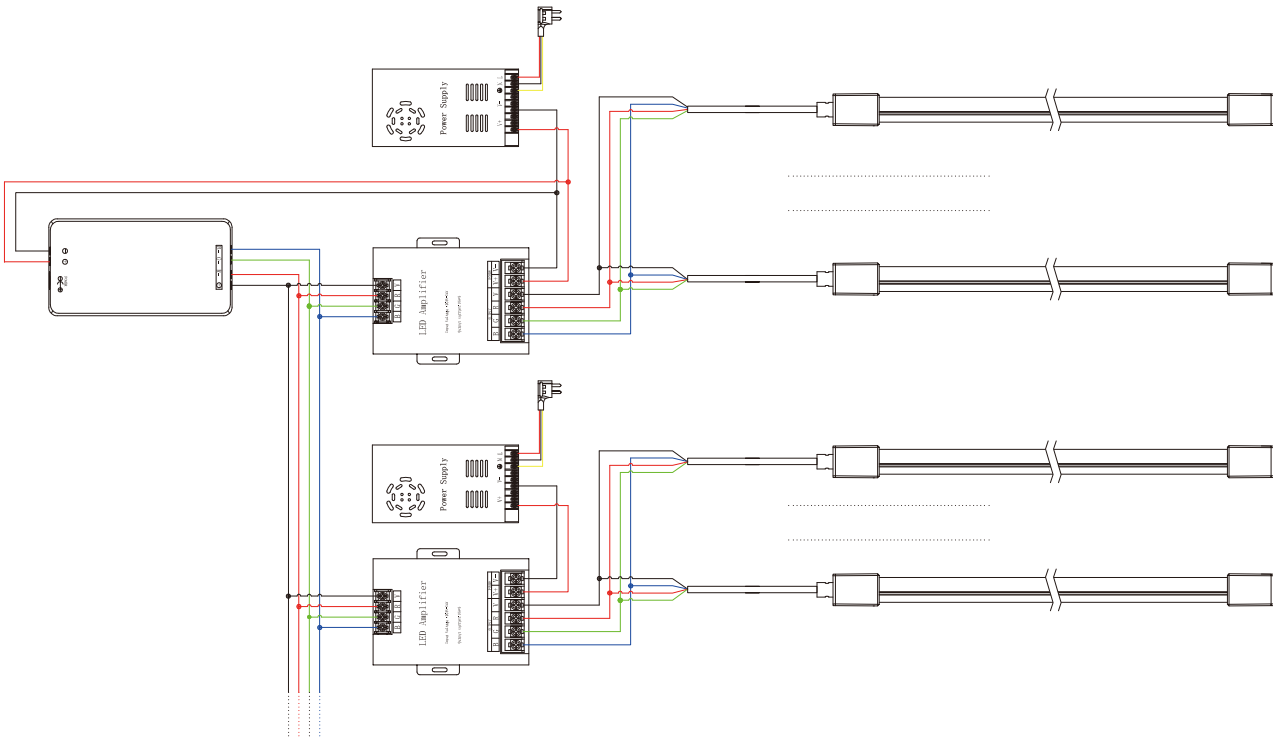
Single Color Connection Diagram



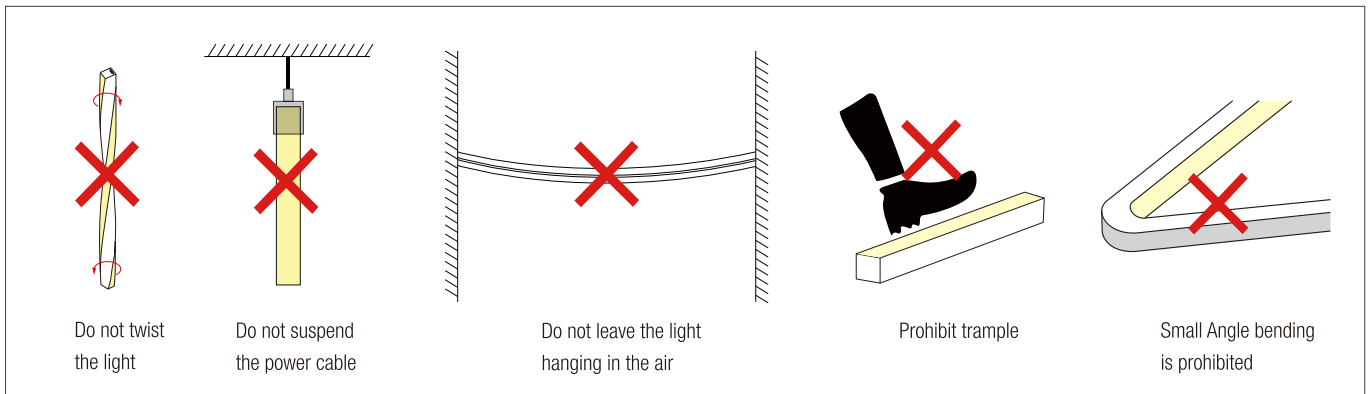
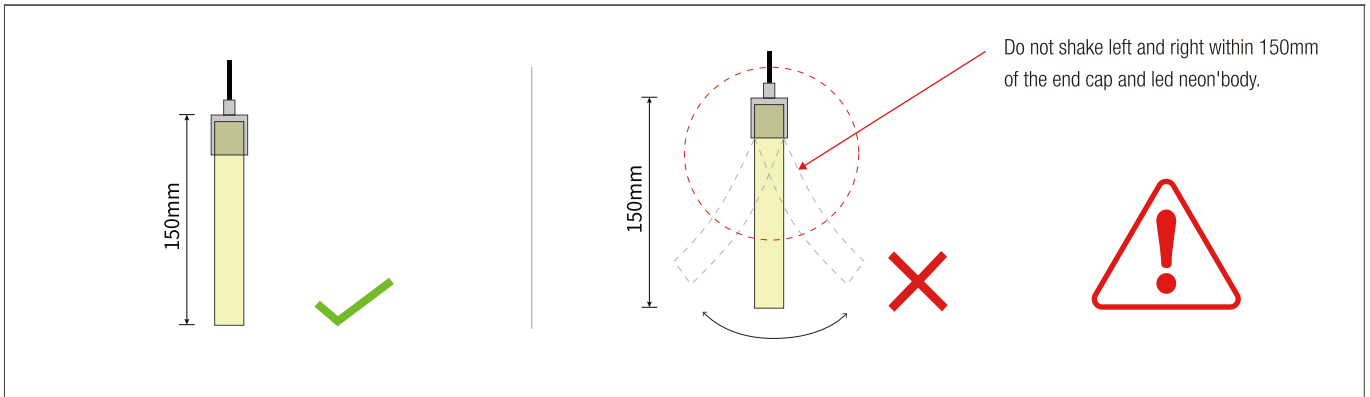
Tunable white Connection Diagram



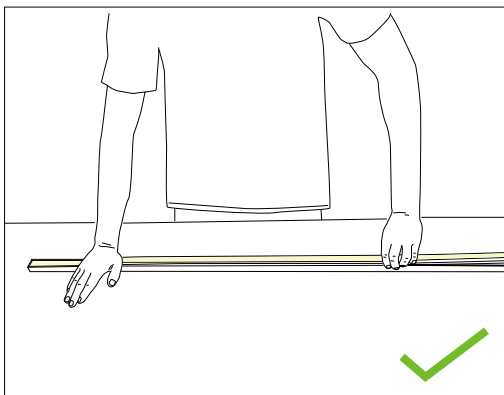
RGB Connection Diagram



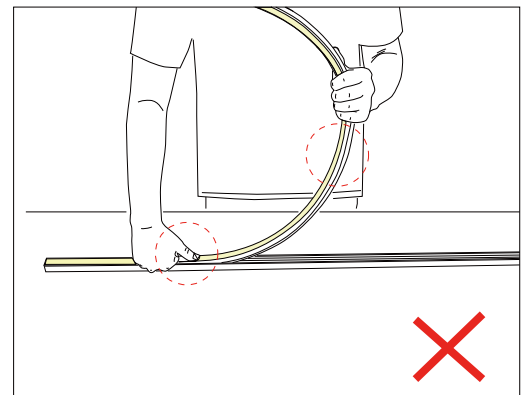
Installation Precautions



Put it in the profile



- Please press the led strip with your palm to slowly insert the led strip into the groove, and gently straighten the led strip above the groove with your right hand.
- Try to keep the led strip in a flat state during the installation process.



- Do not press the led strip with a single finger, it is easy to damage the internal parts of the led strip.
- The bent arc of the led strip should not be too large during installation.

Installation Precautions — Side Mounted (If the length of the light is more than 2 meters, two persons must work together to install it.)

Figure 1

Hold the light and rotate it 90°, make ensure the light is bent in the correct direction.

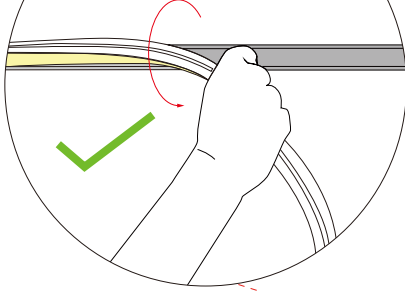
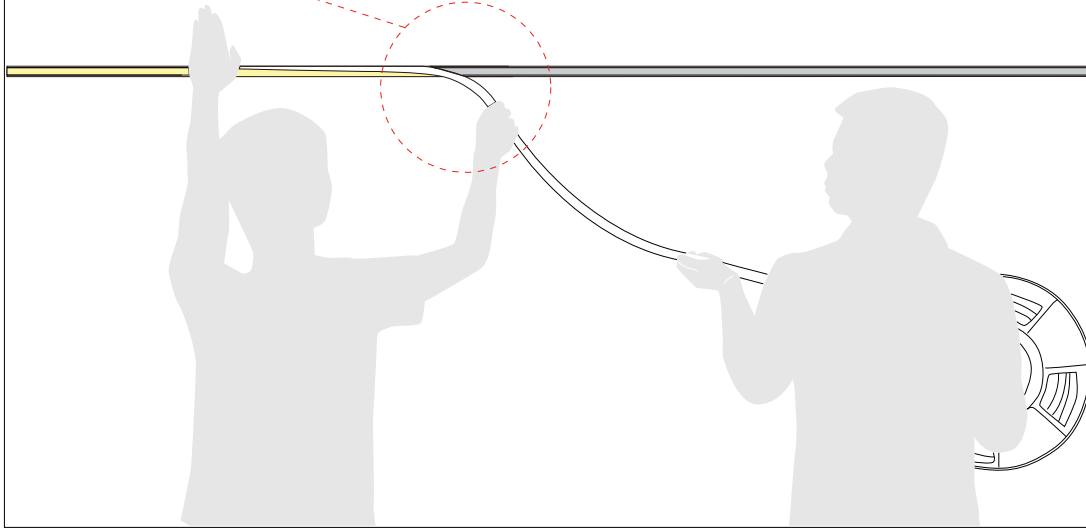
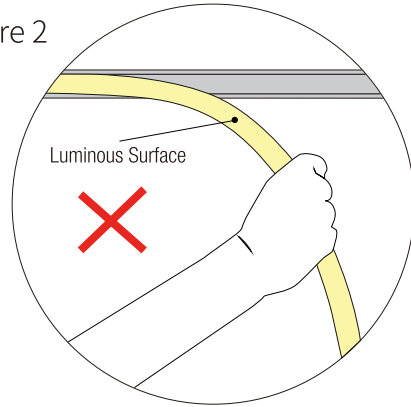


Figure 2

Luminous Surface



1. Installer:

- Press the light with the palm of the left hand to slowly load it into the slot. Straighten the light with right hand, hold it and rotate it 90° to droop it in the direction of your hand. See Figure 1.
- Do not bend the luminous surface to the side. See Figure 2.

2. Assistant:

- Cooperate with the installer to lift the reel of the light, and then slowly deliver the light to installer. Do not pull or twist the light during the installation.

Installation Precautions — Side Mounted (If the length of the light is more than 5 meters, two persons must work together to install it.)

Figure 1

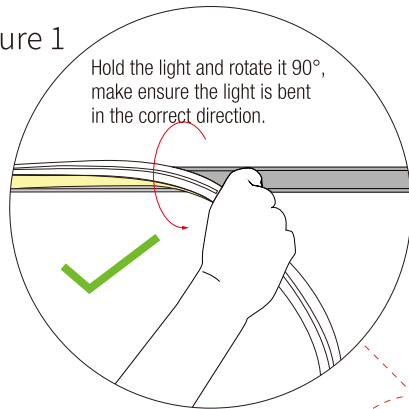
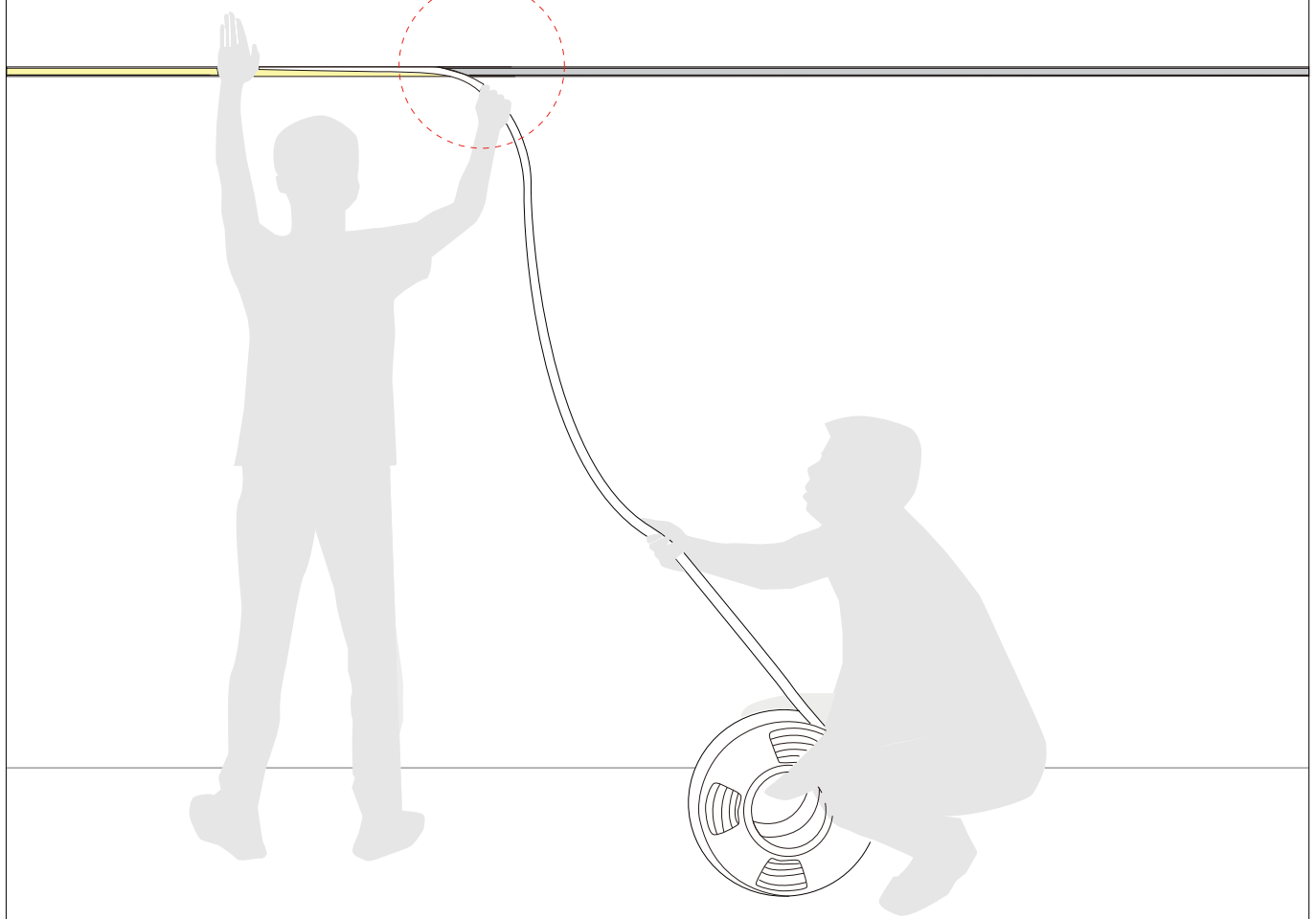
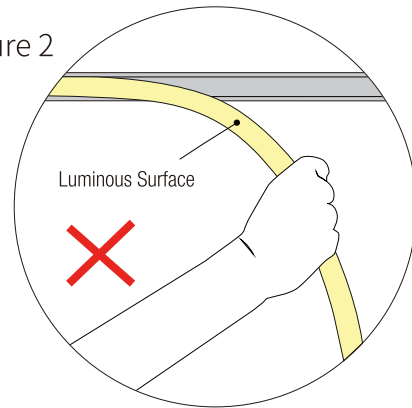


Figure 2



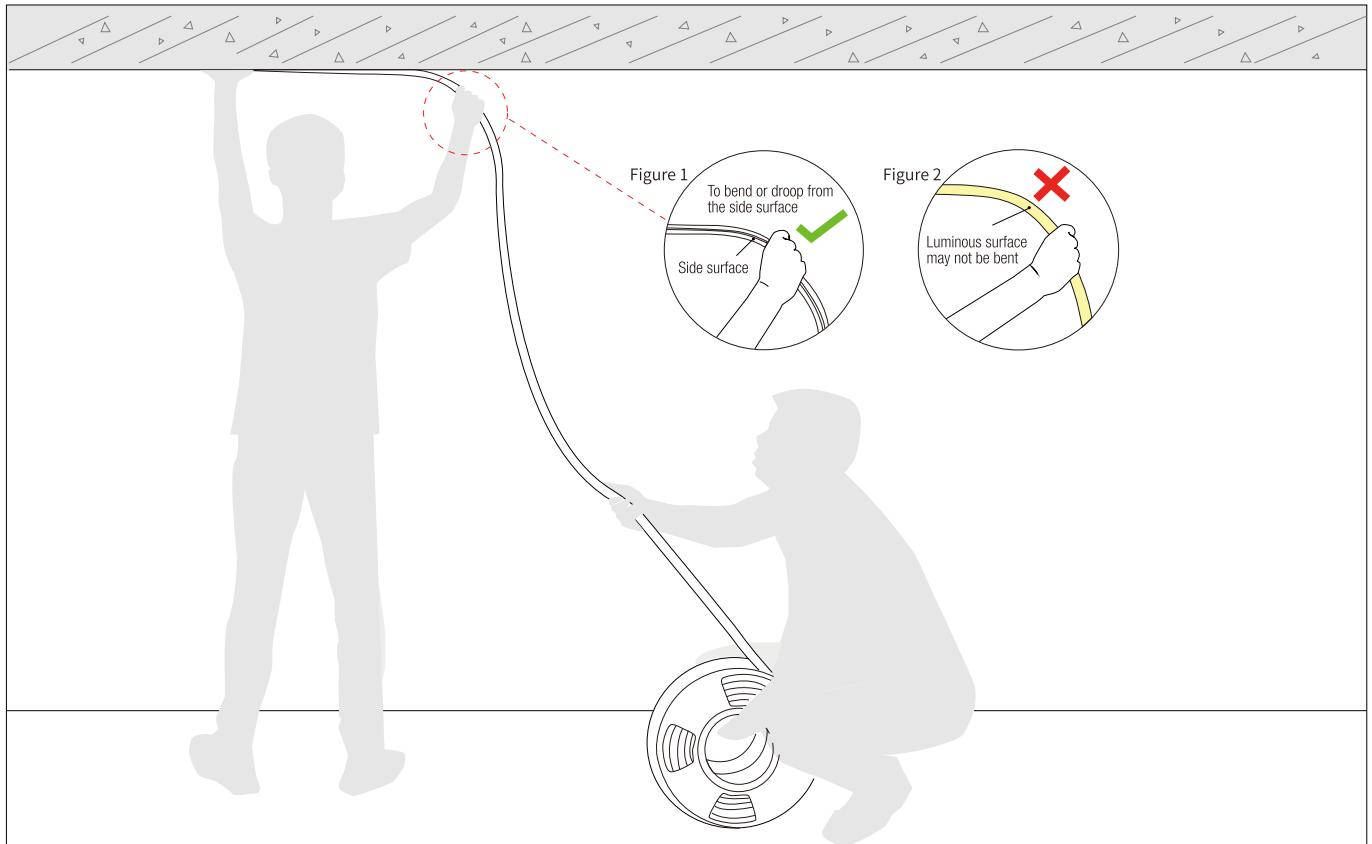
1.Installer:

- Press the light with the palm of the left hand to slowly load it into the slot. Straighten the light with right hand, hold it and rotate it 90° to droop it in the direction of your hand. See Figure 1.
- Do not bend the luminous surface to the side. See Figure 2.

2.Assistant:

- Cooperate with the installer to slowly deliver the light to installer. Do not pull or twist the light during the installation.

Installation Precautions — Top Mounted (If the length of the light is more than 2 meters, two persons must work together to install it.)



1. Installer:

- Press the light with the palm of the left hand to slowly load it into the slot. Straighten the light with your right hand so that it droop naturally. See Figure 1.
- Luminous surface may not be bent. See Figure 2.

2. Assistant:

- Cooperate with the installer to slowly deliver the light to installer. Do not pull or twist the light during the installation.

Notes

The selection of the cable specification at the output end of the power supply, it depends on the total current of the load and the length of the cable. It is recommended to select according to the following table:

| Current of the light | Specifications of the cable | | | | | | | | |
|----------------------|-----------------------------|-------|-------|-------|-------|-------|-------|-------|-------|
| | L=1M | L=2M | L=4M | L=6M | L=8M | L=10M | L=12M | L=14M | L=16M |
| 1A | AWG26 | AWG23 | AWG21 | AWG18 | AWG18 | AWG17 | AWG16 | AWG15 | AWG15 |
| 2A | AWG23 | AWG21 | AWG18 | AWG16 | AWG15 | AWG14 | AWG13 | AWG12 | AWG12 |
| 3A | AWG22 | AWG18 | AWG16 | AWG14 | AWG13 | AWG12 | AWG11 | AWG11 | AWG10 |
| 4A | AWG21 | AWG18 | AWG15 | AWG13 | AWG12 | AWG11 | AWG10 | AWG9 | AWG9 |
| 5A | AWG20 | AWG17 | AWG14 | AWG12 | AWG11 | AWG10 | AWG9 | AWG9 | AWG8 |
| 6A | AWG18 | AWG16 | AWG13 | AWG11 | AWG10 | AWG9 | AWG8 | AWG8 | AWG7 |
| 7A | AWG18 | AWG15 | AWG12 | AWG11 | AWG9 | AWG8 | AWG8 | AWG7 | AWG6 |
| 8A | AWG17 | AWG15 | AWG12 | AWG10 | AWG9 | AWG8 | AWG7 | AWG7 | AWG6 |
| 9A | AWG17 | AWG14 | AWG11 | AWG10 | AWG8 | AWG7 | AWG7 | AWG6 | AWG5 |
| 10A | AWG16 | AWG14 | AWG11 | AWG9 | AWG8 | AWG7 | AWG6 | AWG6 | AWG5 |

- ※ The unused light should be sealed with the packaging bag to avoid prolonged exposure.
- ※ Please use DC24V isolated constant voltage power supply with ripple voltage less than 5%. Using other types of power supply may damage the light or cause other safety risks.
- ※ In practical application, 20% allowance should be reserved for power supply to ensure the stability of power supply.
- ※ It is recommended that professionals connect the power supply. Do not connect the power supply with live power to avoid electric shock.
- ※ Please confirm whether the voltage of the power supply is consistent with the voltage of the light; Pay attention to the positive and negative poles of the power cord, do not connect wrong, so as not to cause product damage;
- ※ When multiple power supplies are used, ensure that the positive poles of the power supply are not connected in parallel. Otherwise, the power supply system may be unstable or damaged after long-term operation.
- ※ If the actual application length exceeds the specified length, it will lead to overload, heating and uneven brightness of the light.
- ※ During installation, please do not scratch, twist, or bend the light irregularly. Otherwise, the light may be damaged beyond repair.
- ※ To ensure the life and reliability of the light, please do not over bend the light, which will damage the product itself.
- ※ To protect your eyes, please avoid staring at the glowing surface of the light for a long time.
- ※ Non-professionals are forbidden to install, disassemble and maintain the product.
- ※ Do not use any acid or alkaline adhesive to fix the light (including but not limited to glass glue, etc.)
- ※ IP67 products are not suitable for long-term immersion in water; IP68 products are only customized by the factory. After cutting and processing by users themselves, there is a risk that IP68 protection level cannot be reached
- ※ Because of the difference in structure, even if the same color temperature value, different sizes of light will look slightly different colors. Please confirm it before use.

Tests showed that methanol and benzenes will have yellowing effects on silicone.

In the newly decorated interior environment, epoxy floor paint, wall paint, wallpaper adhesive, various decoration materials or new furniture, they are likely to release of methanol and benzenes.

It is recommended to remove methanol and benzenes first, or ventilate for a period of time in the newly decorated interior environment before install the silicone neon light, to avoid affecting the silicone body.



Omni Via

Omni-Via
sales@omni-via.co.uk