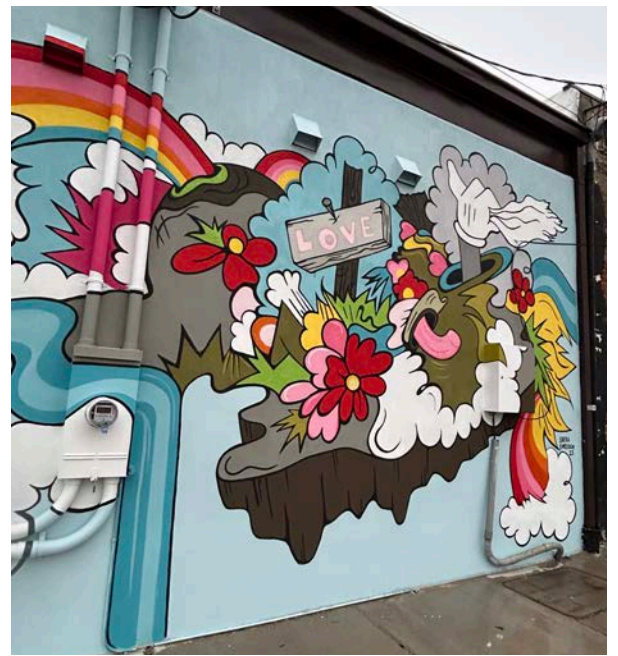
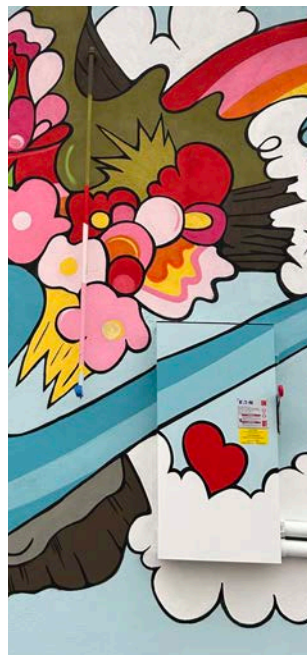


**Sarah Emerson** [saemerson@mac.com](mailto:saemerson@mac.com)

For more images, articles, and current projects please visit [www.sarahemerson.com](http://www.sarahemerson.com)



**Here Now, 2023**

Installation view 109 Tarboro Street W., Wilson, N.C.  
Approx. 14 x 50 feet, Exterior latex paint on wall and utility boxes  
Installation timeline: 7 days

**Sarah Emerson** saemerson@mac.com

For more images, articles, and current projects please visit [www.sarahemerson.com](http://www.sarahemerson.com)



***Screaming Meemies*, 2019**

Refinery 29, 29 Rooms mural installation view, August 2019

7 x 21 feet stretched on aluminum frame for travel

Fluorescent paint and blacklight

Installation timeline: N/A created offsite for installation, travelled to

Atlanta, New York, and Los Angeles

Bottom images: installation included blocks with print of the image

for viewers to paint

Timeline: completed off site, 10 days

**Sarah Emerson** [saemerson@mac.com](mailto:saemerson@mac.com)

For more images, articles, and current projects please visit [www.sarahemerson.com](http://www.sarahemerson.com)



**Rumble, 2018**

Installation view Hathaway Contemporary, Atlanta, GA

Approx. 14 x 16 feet, Interior latex paint on wall

Installation timeline: 4 days

**Sarah Emerson** [saemerson@mac.com](mailto:saemerson@mac.com)

For more images, articles, and current projects please visit [www.sarahemerson.com](http://www.sarahemerson.com)

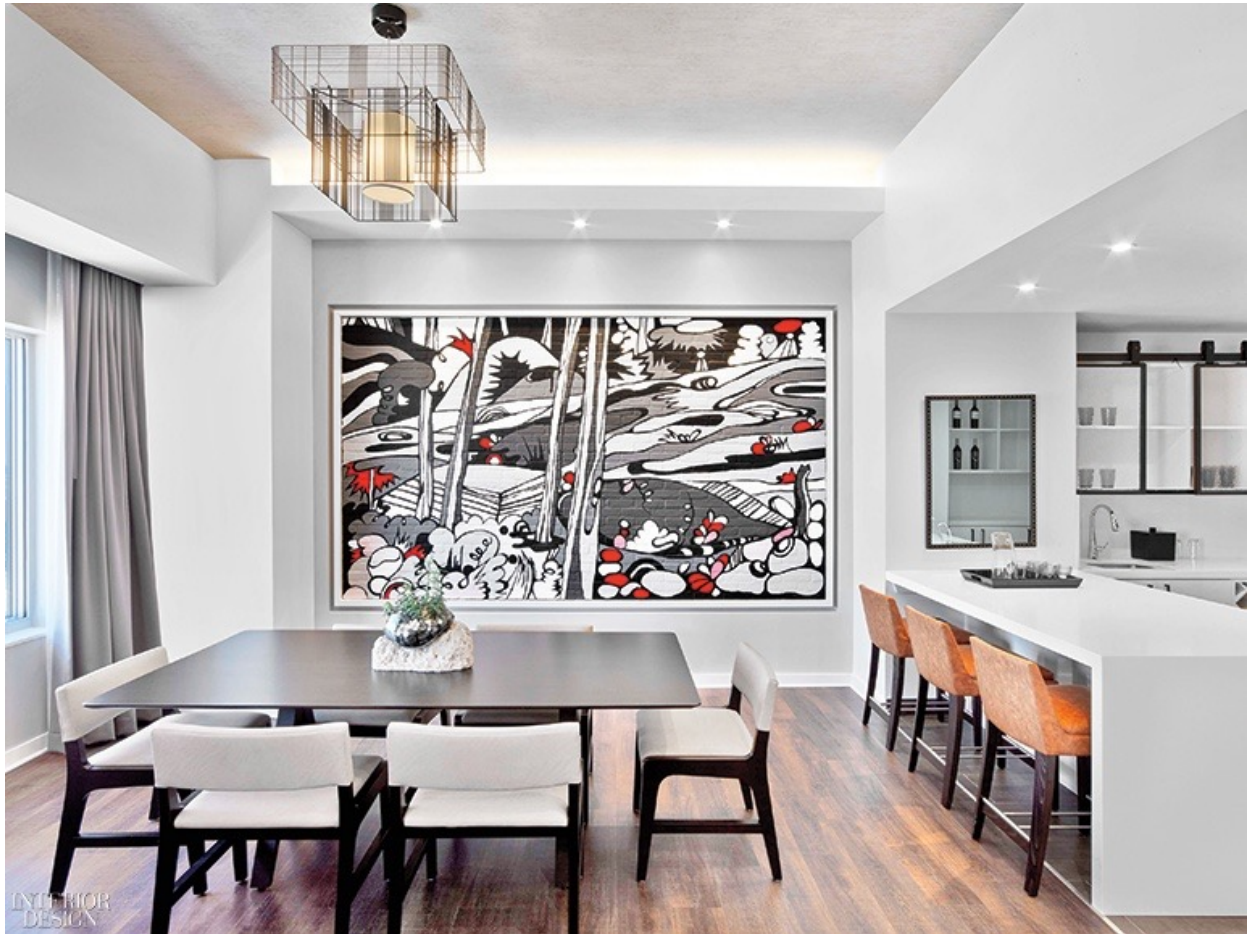


[Zuckerman Museum](#) mural installation view, January 2018

top: **Mother** and **I Am Become**, 2 murals approx. 14 x 18 ft. ea. Acrylic on wall

bottom image: **Berserk Planet**, 7 x 21 ft., fluorescent paint and blacklight

Installation timeline: 7 days, **Berserk Planet** completed offsite



**Marriott Gateway Renaissance Hotel Atlanta, GA, 2017**

top image: Executive Suite, installation view

Approx. 12 x 6 feet, Interior latex paint on brick

Bottom image: computer proposal for client

Commissioned by Lillian Lum for Rottet Studio

Installation timeline: 5 days

**Sarah Emerson** saemerson@mac.com

For more images, articles, and current projects please visit [www.sarahemerson.com](http://www.sarahemerson.com)



***Lost & Found*, 2013**

Exterior latex paint on wall

30 x 14 feet

92 Broad Street, Atlanta, GA commissioned by the City of Atlanta Office of Cultural Affairs  
for Elevate Atlanta 2013

Installation timeline: 7 days



**Sarah Emerson** [saemerson@mac.com](mailto:saemerson@mac.com)

For more images, articles, and current projects please visit [www.sarahemerson.com](http://www.sarahemerson.com)



***Blue Skies Ahead***, 2015

Latex on curved wall, 24 x 12 feet

Private commission, Allconnect

Installation timeline: 6 days



Digital design of mural proposal for client

Sarah Emerson saemerson@mac.com

For more images, articles, and current projects please visit [www.sarahemerson.com](http://www.sarahemerson.com)



***Black Sea of Trees (Safe & Sound), 2013***

Interior latex paint and MDF on wall

3 walls approx. 40 ft. h. x 72 ft. w.

Installation view, MOCA Jacksonville

Mural commissioned by MOCA Jax

Curator: Ben Thompson, Deputy Director

[ben.thompson@unf.edu](mailto:ben.thompson@unf.edu)

<http://vimeo.com/62455458>

Installation timeline: 7 days



Sarah Emerson saemerson@mac.com

For more images, articles, and current projects please visit [www.sarahemerson.com](http://www.sarahemerson.com)



***Underland*, 2012**

Exterior latex paint on wall

2 walls approx. 17 x 80 ft. each

Fulton Terrace and Holtzclaw, Reynoldstown Atlanta GA

Mural commissioned by Living Walls 2012, part of Art on the Beltline

Installation timeline: 10 days



**No More Dreaming Like a Girl**, 2012  
Acrylic paint on wall, desk, soundtrack to Snow White, mdf panels, and bean bags  
Approx. 15 x 15 x 5 ft.

Mural in collaboration with my daughter Harlow Cregar for "Day Job" curated by Nina Katchadourian and Stuart Horodner  
Installation view ACAC, Atlanta, Ga

**Timeline of Installation**

Invitation: July 2011  
Proposal: November 2011  
Installation: 4 days, January 2011



**Pool of Tears**, 2011  
Interior latex paint and MDF on wall  
Approx. 14 x 35 feet  
Installation view Herron Gallery IUPUI

**Timeline of Installation**

Invitation: July 2010  
Proposal: October 2010  
Installation: 5 days, January 2011



**Feast**, 2010  
Interior latex paint wall between two mirrored columns  
Approx. 12 x 24 feet  
Installation view: "Catastrophe" Manif d'Art 5 Place Quebec, Quebec City, Canada

**Timeline of Installation**

Invitation: March 2009  
Proposal: September-October 2009  
Installation: 5 days, March 2010