

KPGCM's team has overseen numerous projects, including major office complexes and shopping centers, and tenant improvement construction, making sure that the tenants are satisfied with the end result while enhancing the underlying asset for the Owner. We have coordinated with third party construction managers for large projects while working directly with subcontractors for smaller tenant improvement jobs. A sampling is below.

#### OVERSIGHT OF PROJECT CONSTRUCTION:

- ◇ CSC World Headquarters—146,000 sf office building and a 640 space, four story parking garage
- ◇ Towamencin Corporate Center—158,000 sf office condominium in 4 buildings, with land for two additional buildings and a 256 parking space garage
- ◇ Shops of Harleysville—200,000 sf shopping center
- ◇ Ralph's Corner Shopping Center—expansion of a shopping center from 60,000 sf to 253,000 sf
- ◇ 1200 Howard Blvd—an 87,000 sf office building

#### OVERSIGHT OF TENANT IMPROVEMENTS:

- ◇ Almac Clinical Research—55,000 sf
- ◇ Merrill Lynch—32,600 sf of
- ◇ Benetrends—12,500 sf, including several expansions
- ◇ Honda—26,000 sf, LEED Gold interior award
- ◇ Virtua Hospital—12,750 sf, including multiple expandable classrooms
- ◇ Tricenna—4,400 sf, medical offices
- ◇ DEKRA—9,650 sf, offices



***Let KPGCM assist you with the rigorous oversight and detailed scheduling required by commercial construction projects.***

An array of options are available for meeting rooms and conference rooms.

Contemporary technology options abound for large group meetings both locally and remotely.

#### Contact:

**Jim Wrigley, President**

**KPG COMMERCIAL MANAGEMENT**

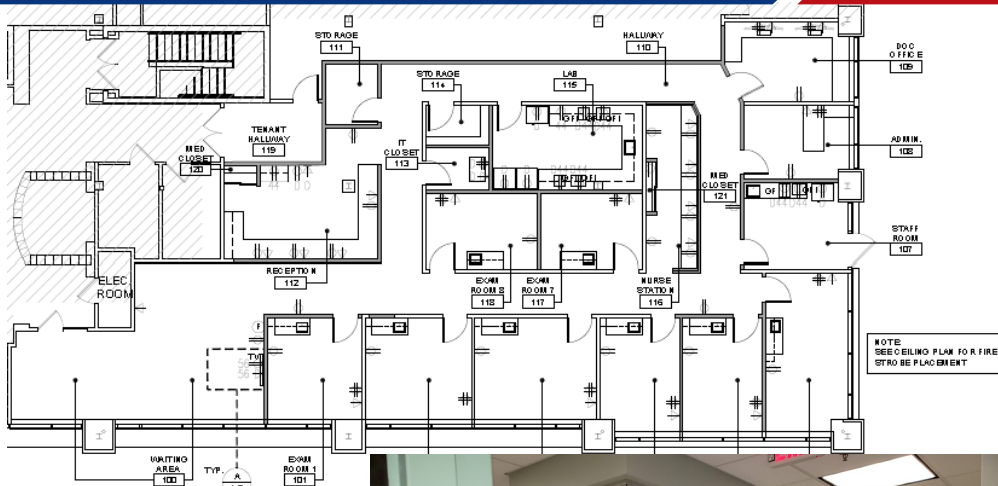
**215.519.2290 (m)**

**[jimw@kpgcm.com](mailto:jimw@kpgcm.com)**

## The Dermatology Group

### HIGHLIGHTS

- ◆ 4,427 sf
- ◆ Fast track construction schedule
- ◆ Medical offices with multiple exam rooms
- ◆ Complex plumbing
- ◆ Built-in reception desk
- ◆ Multiple finishes
- ◆ Stringent cleaning requirements



## Cedar Hill Shopping Center, 12,000 sf Multi-tenanted Pad Site

### HIGHLIGHTS

- ◆ High end improvements, accommodating a drive-thru for Starbucks and a remote drive-thru for PNC Bank
- ◆ 6-month fast-track construction schedule
- ◆ Energy efficient design
- ◆ Quick turnaround allowed us to capture top notch national tenants and create significant value
- ◆ Fully leased to national tenants!

