

**FEBRUARY 21-23
2025**



TECHNICAL GUIDE

A USA Cycling Timed Stage Race and Points Stage Race
Updated 2/10/25

WELCOME TO THE 37TH ANNUAL TUCSON BICYCLE CLASSIC
Southern Arizona's Premier Three-Day/Four Stage USA Cycling Stage Race

The Tucson Bicycle Classic returns for its 37th season!

We're proud to continue to offer equal prize lists for Men and Women. TBC is also one of the few events in the country that boasts equal race distances for Men and Women across all categories, providing one of the few truly equal racing opportunities for women's events.

The Pro-1-2 categories race a stage race based on accumulated time. Each rider receives a time in General Classification (GC) for each stage, on which the prize payouts and awards are based. Daily GC jerseys are awarded to each grouping racing together. The other categories will be run as a stage race based on points. We believe this will make some of the categories more competitive, and having one bad day won't necessarily take someone out of the competition. "Best" sub-categories within a race category will receive awards after the last stage.

New! New! New! We begin racing with a new Prologue time trial course held on a beautiful new bike path in Marana. We're also pleased to announce the addition of a criterium in downtown Tucson near the Tucson Convention Center. This is designed as a showcase of our top riders to the community, and is only for Pro Men and Women, Cat 2/3, and Masters 40+ Cat 1-2-3. If you're not racing, come watch! Food and beverage will be available! Sahuarita's road race remains on the same course, but fewer race categories mean there is less chance for fields overtaking each other. The Oro Valley Circuit has been modified, removing the need for a lot of those cones while providing a slightly shorter course with a punchy uphill finish.

Prologue Marana Time Trial: A flat 7.24 km (4.5 mi) prologue on a one-way smooth, wide bike path. This is run "Merckx style" for all riders.

Stage: Tucson Downtown Criterium: A short 1.2km (.75 mi.) 5 corner course with some technical features. The criterium is held under the lights to showcase our top riders in select categories to our sponsors and the community.

Stage 2 Sahuarita Road Race: A 33 km (20.5 mi) loop featuring 300 m (1000 ft) of climbing per lap and a long, straight uphill finish.

Stage 3 Oro Valley Circuit Race p/b Rutledge Dental: Located in beautiful Naranja Park, the Oro Valley Circuit Race is a 4.5 km (2.8 mi.) circuit run with criterium regulations without a free lap. It has an uphill finish in beautiful Naranja Park.

We hope you enjoy your stay in Arizona. An incredible amount of work has been done by our dedicated race staff to make this event happen. Staging an event like the TBC is remarkably complicated. We hope you enjoy the race and please say thanks to a staff member if you have the opportunity. And be sure to visit and support our local businesses and race sponsors. Without our wonderful sponsors – the TBC would not happen.

Marco Colbert – Race Director
Tucson Bicycle Classic
Email: info@tucsonbicycleclassic.com



TABLE OF CONTENTS

HOST HOUSING & HOTELS.....	1
RACE HEADQUARTERS	1
SCHEDULE.....	2
RACE REGULATIONS SUMMARY	3
REGISTRATION	3
ELIGIBILITY	3
PACKET PICKUP/CONFIRMATION.....	3
PRO/1/2 TEAM MANAGER MEETING	3
LEADERS JERSEY	4
RACE NUMBERS	5
DOPING CONTROLS.....	6
SIGN-ON	6
TECHNICAL SUPPORT & WATER.....	6
RADIO COMMUNICATIONS	7
CENTER LINE REGULATIONS	7
MIXING OF FIELDS	7
LAPPED AND OVERTAKEN RIDERS.....	7
RESPECT FOR CYCLING’S IMAGE	7
RESULTS.....	7
PROTESTS	7
AWARDS/PODIUM	8
Timed Stage Race Specific Regulations	9
Points Stage Race Specific Regulations	10
PHOTOGRAPHY AND VIDEOGRAPHY.....	11
HOSPITALS AND MEDICAL CARE	12
CATEGORIES AND PRIZES	13
PRIZE LIST DISTRIBUTION.....	14
PROLOGUE: MARANA TIME TRIAL PROLOGUE RACE DETAILS.....	15
STAGE 1B: DOWNTOWN TUCSON CRITERIUM RACE DETAILS	17
STAGE 2: SAHUARITA ROAD RACE DETAILS.....	19
STAGE 3: ORO VALLEY s RACE p/b RUTLEDGE DENTAL RACE DETAILS	22
SPONSORS.....	25
USA Cycling Policy VII – Upgrades.....	27

STAFF

Race Director – Marco Colbert
Crew Chief – Tom Schuler
Assistant Crew Chiefs:
 Carl Newberg
 Andrew Frey
 Ace Bollinger
Technical/Teams Director – [Dorothy Abbott](#)
Volunteer Coordinator – Sean Pantellere
Webmaster – Craig Harding
Marketing/Media Director – Bekah Collins,
 Good News Communications
Podium – Beth Rice
Race Committee:
 Ignacio Rivera de Rosales
 Tom Collins
 Margarita Rypkowski
Host Housing/Map Maker – Paul Wiederhold
Announcers:
 Brad Sohner
 James Grady
Women's New Racer Program:
 Cécile Lejeune
 Lauren Hall

TIMING AND RESULTS

RaceDay Event Management

PRO NEUTRAL SUPPORT

Elite Racing Service

RACE HEADQUARTERS

The official race headquarters for packet pickup and team manager meeting:

Oro Valley Bicycle
12925 N Oracle Rd
Tucson, AZ. 85739



RACE OFFICIALS

Questions: tbcofficials2025@gmail.com

Chief Referee – Karla Gendler

Assistant Referees:

 James Abbott

 Tim Burgess

Motor Referees:

 Kurt Kearcher – Lead

 Tom Gonzales

 Albert Faria

 Trish Black

Chief Judge – Mitchell (Mitch) Beckner

Assistant Judges:

 Ben Boyd

Apprentice: James Rockow

HOST HOUSING & HOTELS

Please visit the Racer Info > Find a Host tab on our [website](#). Fill out and submit the form; if there is availability you will be matched with a potential host. Pro fields have priority. Meals and transportation are not included with host housing. Host housing is limited.

For more details, please visit the Racer Info>Hotels tab on our [website](#).

Westward Look Wyndham Grand Resort & Spa

245 E Ina Rd., Tucson, AZ 85704

(520) 297-1151

Holiday Inn Express Oro Valley

11075 N Oracle Rd, Oro Valley, AZ 85737

(520) 544-2100

Fairfield Inn and Suites

10150 N. Oracle Rd., Oro Valley, AZ 85737

(520) 202-4000

The Ritz-Carlton, Dove Mountain

15000 N Secret Springs Dr., Marana, AZ 85658

(520) 572-3000

Hampton Inn & Suites Tucson Marana

6300 W Marana Center Blvd, Tucson, AZ 85742

(520) 572-1010

SCHEDULE

Normal online registration closes at midnight Mountain Time on **Monday, February 17, 2025**.

If you miss online registration and you really want in, the fee is double after the close of online registration, up through the end of bib pick-up on Thursday. Don't be late! No registrations will be accepted after the Prologue times have been posted. Category changes must be made prior to close of online registration. No exceptions.

Thursday, February 20

At Oro Valley Bike Shop:

- Packet/Bib Pickup 16:00 – 20:00

Friday, February 21

- Pro-1-2 Men/Women Team Manager Meeting – 15:00 - Crit course



Friday, February 21

Marana Prologue Time Trial

Start 7:00	Categories
1	Men 40+ Cat 1-3
2	Men 2/3
3	Women Pro/1/2
4	Men Pro/1/2
5	Men 4
6	Women: 4/Novice & 60+ Open
7	Men 60+ Cat 1-4
8	Women: Cat 3 & 40+ Cat 1-4

START TIMES WILL BE POSTED AFTER THE CLOSE OF BIB PICK UP ON THURSDAY

Friday, February 21

Downtown Tucson Twilight Criterium

Start	Categories	Time
15:00	Pro-1-2 Team Managers Meeting Double Tree Hotel	
17:00	Men 40+ Cat 1-3	30 min
17:40	Women Pro/1/2	45 min
18:30	Family Event & Awards	
19:15	Men 2/3	30 min
20:00	Men Pro/1/2	45 min
	Awards	

Saturday, February 22

Sahuarita Road Race

Start	Categories	Laps
8:00	Men 4	2
8:05	Men 60+ Cat 1-4	3
8:10	Women 3 & 40+ Cat 1-4	3
8:15	Women 4/Novice & 60+ Open	2
8:35	Women Pro/1/2	4
	Awards	
12:30	Men Pro/1/2	4
12:40	Men 2/3	3
12:45	Men 40+ Cat 1-3	3
	Awards	

Sunday, February 23

Oro Valley Circuit Race p/b Rutledge Dental

Start	Categories	Time
8:00	Men 4	30 min
8:45	Men 40+ Cat 1-3	45 min
9:45	Men: 60+ Cat 1-4	30 min
10:30	Women 3 & Women 40+ Cat 1-4	40 min
11:25	Women 4/Novice & 60+ Open	30 min
	Awards	
12:40	Men 2/3	50 min
13:45	Women Pro/1/2	75 min
15:15	Men Pro/1/2	75 min
	Awards	

RACE REGULATIONS SUMMARY

The Tucson Bicycle Classic is a three-day USA Cycling sanctioned timed stage race (Pros) and points stage race (others) held under USA Cycling Permit #2025-10094. The USA Cycling regulations and scale of penalties apply. All races are subject to USADA Antidoping regulations.

The Tucson Bicycle Classic is a timed stage race for Men and Women Pro/1/2. The winner of the General Classification is the rider with the best overall time. All other categories will compete in a Points Stage Race, determined by fewest number of total points accumulated.

REGISTRATION

Registration is online at BikeReg only and closes at **12:01 am** MST on Monday, February 17, 2025. Fees include the daily USA Cycling surcharge. Arizona sales tax, additional optional insurance, and the BikeReg service fee are extra.

Entry Fees are as indicated on BikeReg. **No race day registration or race day category changes are permitted.** However, entrants may modify their race category online through the close of registration, provided they are eligible to enter the category, the Team Limit is not exceeded, and any difference in entry fees are paid. Transfer of entries to other persons is not permitted. Races go rain or shine - **no refunds**; your entry is your commitment to race. There are no individual race entry fees for races in the Points Stage Race.

ELIGIBILITY

All racers must have a valid USA Cycling license, or a license from a governing body that is a member of the UCI. Alternately, three one-day licenses may be purchased for USA-based riders without a current USA Cycling license. A standard USA Cycling event waiver must be signed by all riders. Any entrant under 18 also requires a parent's or guardian's signature on the waiver.

The race is "Team Limited" per USAC 3H2:

- Pro fields: a maximum of 10 riders per team.
- Other fields: a maximum of 12 riders per team.

Foreign Riders: All foreign riders at the 2025 Tucson Bicycle Classic will need an international race license that is in good standing with their national Federation and a Foreign Permission Letter from their national Federation that permits the rider to race in the United States during the dates February 21-23, 2025. The letter must also specify one of the following:

- The rider is covered by medical insurance for racing in the United States.
- The rider is not covered by medical insurance for racing in the United States and will provide proof of such coverage.
- The rider accepts full responsibility for all medical costs they incur at the event.

If no Foreign Permission Letter is provided, the rider understands and agrees that they shall solely be responsible for any medical costs and/or claims and for purchase of any medical insurance desired that will cover them while participating in the Tucson Bicycle Classic.

PACKET PICKUP/CONFIRMATION

Thursday evening at the race headquarters:

Oro Valley Bicycle, 12925 N. Oracle Rd, Tucson, AZ 85739

- Pros: 4:00 pm – 6:00 pm
- Amateurs: 4:00 pm – 8:00 pm
- Friday (last resort) pickup: at LEAST 1 hour before your assigned start, at the venue

You must present your racing license at this time. Team managers may pick up numbers for their whole team with the proper rider racing licenses, foreign permission letters, and insurance proof as required.

PRO/1/2 TEAM MANAGER MEETING

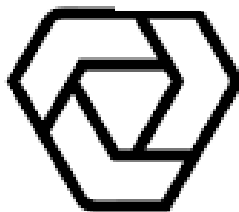
Friday afternoon at the DoubleTree Hotel downtown Tucson from 3:00 pm. This meeting is mandatory to be eligible to have a car in the Sahuarita RR Caravan. If a team manager is not available, Teams are highly encouraged to send a representative. Important information will be covered. Team cars are not permitted on Sunday's circuit course.

LEADERS JERSEY

Verge Sport is the Official Custom Cycling Apparel Sponsor of the 2025 Tucson Bicycle Classic.

General Classification (GC) Leader's jerseys will be provided to each of the overall race leaders on GC (Pro races) or Points (others) after each stage. This jersey must be worn in the next stage. A location for the Team placard is reserved on these jerseys.

"Best" sub-categories as listed under Awards/Podium will be awarded only at the conclusion of the final stage of racing. Ages are based on a rider's racing age on 12/31 of the current year.

2025 Leader's Jersey**VERGE**
SPORT

RACE NUMBERS

Racers will be provided with two bib numbers. Both bib numbers must be worn all three days, including the Marana Time Trial.

Numbers are to be worn on the right and left sides of jersey as illustrated, attached with pins. They must be *clearly visible*. **Riders with long hair - please braid and/or put the hair in a bun. Bib numbers that are unreadable due to poor placement may incur a 5 points penalty (Points racers).**

Lost, cut, or damaged bib numbers must be replaced through the Technical Director. A replacement fee of \$10 for body. Unofficial hand-written replacements are not permitted.

GOOD PLACEMENT



- Body number on the side panel, easy to read
- Right side number on the side of the jersey
- Left side number on or above jersey pocket in orientation as shown

BAD PLACEMENT



- Too high for camera and officials to read. If another rider blocked the bike number, this rider may not be scored.

DOPING CONTROLS

(DOPERS SUCK!!)

Doping controls are under the jurisdiction of USADA. Chaperones will notify riders to be tested after the finish of each stage. Attempting to evade the chaperones may be grounds for a “positive” test. Numbers of riders selected to be tested will **not be posted** for public viewing.

See Appendix I for more information on doping control regulations.

SIGN-ON

Signing on is required for all stages except the Prologue. Sign-in closes 10 minutes before race’s assigned start. At the Marana Prologue Time Trial your start is your sign-in. For the Points Stage Race, your sign-on ensures you will be placed and ranked each stage.

Failure to sign on but still take the start may result in penalties according to USAC 8A5(L) and special race regulations:

1ST offense -- \$20 FINE and (Points Stage Race) 10 points

2nd offense -- \$50 FINE AND DSQ or (Points Stage Race) 15 points penalty

3rd or 4th offense (Points Stage Race) – 20 points penalty

TECHNICAL SUPPORT & WATER

Riders must be self-sufficient concerning water and feeding. The event does not have water for riders at the venues. COME PREPARED!

A sweep vehicle will provide transportation to the finish line but will not provide mechanical assistance. Drafting of support vehicles is prohibited and is subject to time penalties, relegation, points penalties, and/or disqualification (depending on the severity).

Amateur Fields:

Stationary mechanical support is offered through local bike shops at the start area of each race and in the pit locations (where applicable). See stage details for location.

Stage 2: On-course support is wheels in/wheels out. Completely fill out and use the wheel tags that are attached to your bib numbers. Remove wheels from wheel bags prior to dropping them off at the designated locations. In case of a flat, the wheel tag will be pulled from the wheel and inserted into your exchanged wheel. It’s quite possible you will not receive *your* wheel if you put one in the support vehicle, but you will receive a compatible wheel. Please understand that our wheel drivers are not mechanics. You are expected to change or repair your wheel yourself.

Wheels will be returned to the same general area as drop-off after each wave of racing. Tucson Bicycle Classic is not responsible for missing or left-behind wheels. Unclaimed equipment after the conclusion of the final stage will be donated to a junior racing program.

Pro-1-2 Fields:

Neutral support is provided by Elite Racing Service either in the pit or by vehicle. Neutral service technicians will be clearly identifiable by the words ELITE on their uniforms and vehicles (automobiles and/or motorcycles) both before and in-race. Questions or unique equipment concerns are to be addressed with Elite Racing Service before their event. mike@eliteracingservice.com



Technicians will have limited access to 12- and 11-speed Shimano/SRAM/Campagnolo compatible wheels (rim-brake wheels and disc brake wheels with 140/160 rotors available) in the event of flat tires or wheel failure. These wheels are provided on a first come, first serve basis per race. Neutral service includes simple mechanical repairs, limited loaner wheels, or loaned race bicycles. Crash victims: provide bicycle frame size, approx. saddle height, and pedal type to technician.

Riders who are issued loaner equipment will have their race registration credentials noted and be solely responsible for the return of loaner equipment **immediately** following the completion of their stage (at the finish-line area). This equipment is needed to support the next wave of races.

Pro Field Team Vehicles – Stage 2 Sahuarita Road Race: Team vehicles will be allowed on the Stage 2 Sahuarita Road Race to provide **mechanical assistance only. Feeding from cars is prohibited.** Eligibility: A team representative who will be in the team vehicle must be present at the Thursday Team Manager Meeting. Mandatory “Team” car banners will be distributed at this time. Eligible team cars will be numbered according to the best rider on the team in General Classification.

Vehicles exceeding 1.66 meters in height will be at the back of the caravan, according to height. **Rear mounted bike racks and tinted or wrapped windows are prohibited.**

Car numbers and radios are to be picked up by the team manager at rider sign-on before the road stage. They are to be placed on the windows: front – passenger side and rear - driver side. In addition, the “Team” banner must be taped to the front and rear windows.

Caravan team vehicles must be in the staging area at least 40 minutes before the start of the waves of riders, clearly identified with the team’s name, and equipped with a radio (see below), and properly marked with official race “Team” banners. They be numbered by the race organization in the front and rear windows.

RADIO COMMUNICATIONS

Per USAC 1J6, Radio communications are permitted only in the Pro fields during the Sahuarita Road Race, and all fields during the Prologue. Audio playback devices are prohibited in all races.

Pro-1-2 Fields Stage 2 Sahuarita Road Race: Handheld radios will be distributed to the team cars allowed in the caravan who are staged by 7:45 am (Women P/1/2) and 11:15 am (Men P/1/2). Radios must be returned *immediately* after the finish of the Women Pro/1/2 race to be used for the Men Pro/1/2 race.

CENTER LINE REGULATIONS

Riders may encounter oncoming traffic during Stage 2. The USA Cycling “Center Line Rule” is in effect the entire road race for all categories. Exceptions, if any, will be announced on the Starting Line. Penalties may include time penalties, points penalties, relegation to last place for stage, or possible disqualification and/or suspension for Center Line Rule Violations.

MIXING OF FIELDS

Racers may *only* work with and take pace from riders in their field. This includes riders in a break-away or riders falling off the back. Know your race numbers and the 100’s number series that you start with. The severity of the penalty corresponds to the severity of the offense.

LAPPED AND OVERTAKEN RIDERS

A **lapped rider** or one who has fallen too far behind and considered to be out of contention *may* be called off the course by the Chief Referee or their designated race official. They will be given a finish time and/or place calculated by the Chief Judge.

A lapped rider must not interfere in any bonus sprint or finishing sprint and must ride sufficient laps at the end of road stages to cover the entire distance to qualify for a prize.

RESPECT FOR CYCLING’S IMAGE

Littering: You are guests here! Littering will not be tolerated. Pack it in/Pack it out. If witnessed by a police officer, offenders may be ticketed in addition to fine sanctions as called for in the regulations. In egregious cases, offenders may be disqualified from the race. If a specific rider cannot be identified the team may be fined. Green zones where bottles may be deposited are in the feed zones.

Public urination is not tolerated. Portable toilets are provided. If witnessed by a police officer, offenders may be ticketed. USAC 8A5(M): 1ST -- \$50-100, 2ND -- \$200 AND DSQ.

RESULTS

Provisional results for the top 10 in each field will be posted onsite after Stages 1b, 2 and 3. Final field results for each Stage and General Classification will be posted online. In addition, field results will be emailed to participants at the email address provided through BikeReg.

PROTESTS

Protests concerning the order of finish or timing are lodged with the Chief Judge via email or in person. Protests concerning other sporting aspects are to be lodged with the Chief Referee via email or in person. (See list of officials.) Text messaging is *not* an acceptable form of protest.

Protests for the Time Trial Prologue, Stage 1b, and Stage 2 must be lodged at least one hour before the start of the next stage. Protests for the final stage must be lodged within 15 minutes of the posting of the preliminary results. Past that time the results may be reviewed but no changes to the prize list will be made.

AWARDS/PODIUM

Riders are to appear for podium photos in racing attire. Street shoes are ok. Bare headed or cap. No sunglasses. Please note the penalty in the USA Cycling regulations 8A5(k) for missing a podium presentation will be applied if necessary [\$70 fine and forfeiture of prizes].

Stage 1a Marana Prologue Time Trial: See Stage Details. No podium. GC leader jerseys will be handed out at sign-in at the next stage raced.

Stage 1b Downtown Tucson Criterium and Stage 2 Sahuarita Road Race: See Stage Details for awards time and location. A podium will be held for each field:

- Top three stage finishers for each field
- GC Leaders

Stage 3 Oro Valley Circuit Race p/b Rutledge Dental: See Stage Details for awards time and location. The following riders are required to present themselves for awards presentation:

- 1) Top three stage finishers for each field
- 2) Top three of the field General Classification or Points overall
- 3) Top three “best” rider on GC or Points:

Women Cat 4 Race:

- 13-14 Cat 4
- 15-16 Cat 4
- 17-18 Cat 4
- Women 70+ Open
- Women 60+ Open

Women Cat 3 Race:

- Women 50+ Cat 1-4
- Women 40+ Cat 1-4

Women Pro/1/2 Race:

- Under 24

Men Cat 4 Race:

- 13-14 Cat 4
- 15-16 Cat 4
- 17-18 Cat 4
- Men 40+ Cat 4
- Men 50+ Cat 4

Men 60+ Race:

- Men 65+ Open
- Men 70+ Open

Men Pro/1/2 Race

- Under 23

Timed Stage Race Specific Regulations

TIMING, GENERAL CLASSIFICATION

Timing follows USA Cycling regulations 3H4(b), using electronic timing. A new time is assigned when there is a difference of one second or more between the back of the rear wheel of the last rider in a group and the front of the front wheel of the first rider of the following group.

General Classification is determined by the sum of the times (discarding fractions of a second) in all stages including the Marana Time Trial, subtracting time bonuses, and adding time penalties.

Ties: Ties in General Classification shall be broken in the following order until the tie is broken:

- 1) Adding in the fractions of a second from the time trials
- 2) The sum of the placings in Stages 2 and 3
- 3) Highest place in the last stage ridden

Bonuses - Pro-1-2: Time bonuses will be awarded as defined in the Stage details and tables, with intermediate bonuses of

- **Criterium:** 1"
- **Road stages:** 3" – 2" – 1"
- **Finishes:** 10" – 6" – 4".

Finishes: None of the road stages end in a hill climb finish for purposes of USA Cycling 3H6(c)(ii). In cases of application of the 3K rule, there is no 3K rule applied to the circuit race stage 3. In other cases, the Race Jury shall decide.

Time Limits: Riders not finishing by the time the sweep vehicle arrives at the Finish line will be deemed to have abandoned (DNF) the race and may not continue the next stage.



Points Stage Race Specific Regulations

The Points Stage Race is a set of races in which riders compete for points in each event and final placings are determined by total points in all events. Racers do not need to finish each stage.

Scoring: The following schedule of points will be awarded per stage to the main field. "Best" sub-groups do not receive separate points or scoring.

Points: See the table below. The winner is based on the total number of points obtained.

DSQ (Disqualified): Eliminated from any final placing in the Points Stage Race.

Points Penalties assessed by the race jury (officials) will be subtracted from points totals.

Tie Breaker: If tied on points, the following order will be used until the tie is broken:

1. Highest number of stage wins
2. Sum of places (order of ranking is Finishers, DNF @ 0 pts, DNS @ 0 pts)
3. Highest placing in the last stage raced.

Place	Prologue	Criterium	Crit Int Pts	Sahuarita RR	Oro Valley CR	RR & CR Int Pts
1	20	30	1	40	40	3
2	18	28		38	38	2
3	16	26		36	36	1
4	14	24		34	34	
5	12	22		32	32	
6	10	20		30	30	
7	9	18		28	28	
8	8	16		26	26	
9	7	14		24	24	
10	6	12		22	22	
11	5	10		20	20	
12	4	9		18	18	
13	3	8		16	16	
14	2	7		14	14	
15	1	6		12	12	
16	1	5		10	10	
17	1	4		9	9	
18	1	3		8	8	
19	1	2		7	7	
20	1	1		6	6	
21	1	1		5	5	
22	1	1		4	4	
23	1	1		3	3	
24	1	1		2	2	
25	1	1		1	1	
Finish 26+	1	1		1	1	

PHOTOGRAPHY AND VIDEOGRAPHY

This constitutes formal notice that any or all images of entrants in the race or onsite at the race venue may be used by the promoter and its agents for advertising, trade, and any other lawful purposes. By entering to race, each entrant gives consent for use of his/her name and photographic likeness to the promoter and its agents.

DRONES: County laws prohibit the flying of drones near or over any open roadways in Pima County jurisdiction. However, drones may be used to film the event within closed roads. Use of drones is subject to FAA regulations and requirements. Please do not fly directly over the course at any location during racing.



HOSPITALS AND MEDICAL CARE

In case of an emergency call 9-1-1. Local area hospitals have been advised of the event. Medical services will be available on site at locations indicated in the stage details or by ambulance services.

STAGE 1a – Marana Time Trial Prologue

Non-critical: Northwest Emergency Center Marana – 5.5 miles from venue
6350 W. Marana Blvd
Tucson, AZ 85742
520-579-6040

Northwest Medical Center – 13 miles from venue
6200 N. La Cholla Blvd
Tucson, AZ 85741
520-742-7000

Trauma Center: Banner University Medical Center – 20 miles from venue
1625 N. Campbell Ave
Tucson, AZ 85719

STAGE 1b – Downtown Tucson Criterium

All: Banner University Medical Center - 3 miles from venue.
1625 N Campbell Ave.,
Tucson, AZ 85719

STAGE 2 – Sahuarita Road Race

Non-critical: Northwest Medical Center Sahuarita – 8 miles from venue
16260 S. Rancho Sahuarita Blvd
Sahuarita, AZ 85629
520-416-7100

Trauma center: Banner University Medical Center South – 28 miles from venue
2800 E. Ajo Way
Tucson, AZ 85713
520-874-2000

Trauma center: Banner University Medical Center Tucson – 32 miles from venue
1625 N. Campbell Ave.
Tucson, AZ 85719
520-694-0111

STAGE 3 – Oro Valley Circuit Race p/b Rutledge Dental

Oro Valley Hospital – 3 miles from venue
1551 E Tangerine Rd.
Oro Valley, AZ 85755
520-901-3500

Trauma Center: Banner University Medical Center Tucson – 32 miles from venue
1625 N. Campbell Ave.
Tucson, AZ 85719
520-694-0111

CATEGORIES AND PRIZES

Rider categories are as indicated below. Where riders race together in a field, they are racing for one Overall result and prize list. However, separate jerseys and medals will be awarded as indicated below. GC or Points Leader Jersey is awarded for first place on GC or Points for the field (combined color grouping) "Best" subcategory awards based on GC will be presented at the end of the final stage on Sunday.

		Jerseys Awarded (+ \$ Primes)						
Categories	* Best	GC TT	GC CT	GC RR	GC CR	Best	GC Prizes	GC Places
Women: Cat 4/N & 60+ Open		1		1	1		\$500	5 (comb.)
Jr Girls Cat 4/N	Best Jr 13-14						Medals	3
	Best Jr 15-16							3
	Best Jr 17-18							3
Women 60+ Open	Best 60-69					1		
Women 70+ Open	Best 70+					1		
Women: Cat 3 & 40+ Cat 1-4		1		1	1		\$900	8 (comb.)
Women 40+ Cat 1-4	Best 40-49					1		
Women 50+ Cat 1-4	Best 50+					1		
Men: Cat 4		1		1	1		\$500	5 (comb.)
Jr Boys Cat 4	Best Jr 13-14						Medals	3
	Best Jr 15-16							3
	Best Jr 17-18							3
Men 40+ Cat 4	Best 40-49					1		
Men 50+ Cat 4	Best 50+					1		
Men: 60+ Open		1		1	1		\$600	5 (comb.)
Men 65+ Open	Best 65-69					1		
Men 70+ Open	Best 70+					1		
Men 40+ Cat 1-3		1	1 + \$500	1	1		\$600	5 (comb.)
Men 50+ Cat 1-3	Best 50+					1		
Men Cat 2/3		1	1 + \$500	1	1		\$900	8
Women Pro/1/2		1	1 + \$2000	1	1		\$3,000	15 (comb.)
Pro/1/2 U24	Best U24					1		
Men Pro/1/2		1	1 + \$2000	1	1		\$3,000	15 (comb.)
Pro/1/2 U23	Best U23					1		
TOTALS		9	4 + \$5000	9	9	8	\$10,000	

PRIZE LIST DISTRIBUTION

The Tucson Bicycle Classic has worked hard to ensure we have equal prize lists for Men and Women. The breakdown per place is detailed in the table below based on total prize list, with categories racing in a field receiving a single prize list and General Classification, as indicated in the table above. The prize list distribution for the total prize lists is found in the table below.

Payout will be available at the race venue tent 15 minutes after the results of the Final General Classification have been posted and made final. Prizes not claimed within 90 days of the end of the 2024 Tucson Bicycle Classic will be voided and forfeited to the race organizer. No exceptions. Riders in contention for prizes or awards who cannot be present for the final awards ceremony must inform the race organizer in advance to receive permission. Failure to attend official awards ceremonies is subject to forfeiture of prizes.

Tax forms: Pro/1/2 Men and Women riders winning > \$600 must complete the appropriate IRS form before receiving their prize payment. The form will be available at pay-out, or you may bring a completed form with you. US Citizens: IRS Form W-9. Foreigners: Form W-8BEN.

Nonresident aliens receiving cash prizes must submit Form W-8BEN and may be subject to 30% US federal tax withholding.

PRIZE LIST DISTRIBUTION BY TOTAL PRIZES

PLACE	\$3,000 Prize List	\$900 Prize List	\$600 Prize List	\$500 Prize List	No Cash Prizes
1	\$ 900	\$250	\$230	\$210	Medal
2	\$ 450	\$150	\$130	\$110	Medal
3	\$ 300	\$120	\$ 90	\$ 70	Medal
4	\$ 250	\$100	\$ 80	\$ 60	
5	\$ 180	\$ 85	\$ 70	\$ 50	
6	\$ 150	\$ 75			
7	\$ 125	\$ 65			
8	\$ 110	\$ 55			
9	\$ 100				
10	\$ 90				
11	\$ 80				
12	\$ 75				
13	\$ 70				
14	\$ 60				
15	\$ 60				
TOTAL	\$3,000	\$900	\$600	\$500	-

PROLOGUE: MARANA TIME TRIAL PROLOGUE RACE DETAILS



Course: A short, flat 7.8 km one-way time trial to set the stage for the GC competition.

Sign-in: Your start is your sign in for the Marana TT Prologue

Schedule: The first start is estimated at 7:00 am. Actual start times depend on the number of registered riders in each category. Refer to your actual assigned start time posted after the close of registration. Starts are under the control of the Chief Referee according to USA Cycling regulations.

Starts: The order of starts is set by the race organizer. The defending Champion (Pros) may be started last in their group. Starts will be on 30-second start intervals with 5-10 minutes between race categories. *Riders are to be in the ready area 15 minutes before their appointed start.* Riders will not be hailed to the start. **Know your start time.**

MARANA TIME TRIAL STARTING ORDER

Start Order	Categories	Start Order	Categories
1	Men 40+ Cat 1-3	5	Men 4
2	Men 2/3	6	Women: 4/Novice & 60+ Open
3	Women Pro/1/2	7	Men 60+ Cat 1-4
4	Men Pro/1/2	8	Women: Cat 3 & 40+ Cat 1-4

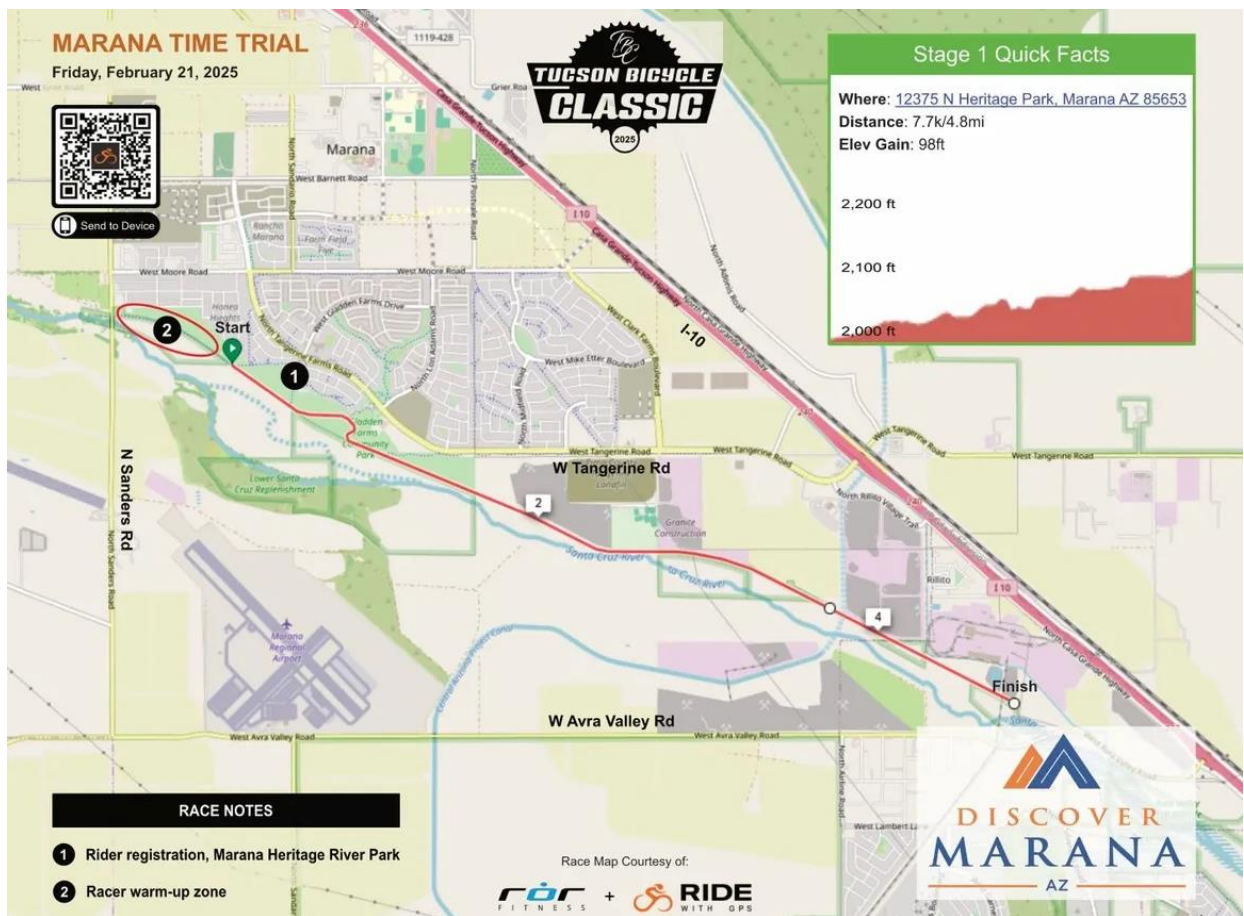
Marana Time Trial Prologue: Stage 1a is run as a Prologue. The results are used to determine the Individual General Classification / Points Classification. Any rider who suffers a mishap during the prologue and is unable to complete the distance shall be permitted to race the following day, shall be placed last of all starters and will be given the time of the last rider completing the course in their field.

Special Regulations:

- No Time Trial bikes allowed.** Only bicycles conforming to USA Cycling massed-start road race bicycles may be used. Aero equipment is limited to helmets. No tri-spokes, disc wheels or wheel covers are permitted. Time trial bars or handlebar extensions are not permitted.
- "Puppy paws" position is strictly forbidden. Hands must be on the bars. [Points or Time]
- The course is one way; however, the **return is partially on the course.**
 - Racing riders must always keep to the right of the path.** Using the left side of the path while racing may result in a time or points penalty as determined by the race jury.
 - The left side of the course is reserved for returning riders. When returning stay to the far right in single file, exercising vigilance and care while getting back to the parking lot. Please observe signage. Interfering with a race in progress can also result in time or points penalties.

Start Location: Marana Heritage River Park, 12375 N. Heritage Park Dr., Marana, AZ 85653

Podium: None. Field GC leaders pick up their jersey at sign-in for the next stage raced.



STAGE 1B: DOWNTOWN TUCSON CRITERIUM RACE DETAILS



Length	Start	Categories	Int Bonus	Fin Bonus	Primes
	3:00	Pro-1-2 Team Manager Meeting - Doubletree			
	16:40	Course Open (Est)			
30 min	17:00	Men 40+ Cat 1-3	1 pt/lap*		\$500
		Anthem			
45 min	17:40	Women Pro/1/2	1"/lap*	10"-6"-4"	\$2,000
	18:25	Awards Women (Race + GC Leader)			
	18:30	Family Event Led by Women Pro Podium Winners			
30 min	19:15	Men 2/3	1 pt/lap*		\$500
45 min	20:00	Men Pro/1/2	1"/lap*	10"-6"-4"	\$2,000

Course: Four corners and one U-turn. 1.2k per lap. Racing under the lights!

Sign-in: Near the Start. Open one hour before and closes 10 minutes before assigned Start time.

Pits: Location to be determined. Watch for the communique' before the stage.
Free laps end when the cards show 7 laps to go.

Bonuses: A 1 pt or 1" bonus will be awarded to the leader of the race each lap, except the end of the first lap and the last lap of the race. Pro-1-2 finishing time bonuses are 10"-6"-4".

Start Location: The Start line is at South Church St and W Cushing St.

Parking: There is ample parking at the Tucson Convention Center, but there is a charge. Additional information will be published in a pre-race communique'.

Podium: After each race at the Finish Line area.

DOWNTOWN TUCSON CRITERIUM



STAGE 2: SAHUARITA ROAD RACE DETAILS

LEADER PROJECTED FINISH PER LAP

		End Lap # Estimate						
Categories	Start	End Lap 1	End Lap 2	End Lap 3	End Lap 4	Bonus Lap	Tot Lap	Mi.
Men 4	8:00	8:50	9:41			1	2	41
Men 60+ Cat 1-4	8:05	9:00	9:55	10:51		1	3	61.5
Women: 3 & 40+ Cat 1-4	8:10	9:07	10:04	11:02	11:59	1	3	61.5
Women: 4/Novice & 60+ Op	8:15	9:17	10:19			1	2	41
Women Pro/1/2	8:35	9:31	10:28	11:25	12:22	1, 3, F	4	82
<i>Awards Morning Races</i>								
Men Pro/1/2	12:30	13:16	14:02	14:48	15:34	1, 3, F	4	82
Men 2/3	12:40	13:25	14:11	14:57		1	3	61.5
Men 40+ Cat 1-3	12:45	13:34	14:23	15:13		1	3	61.5
<i>Awards Afternoon Races</i>								

Course: A challenging 20.5-mile loop with approx. 1,000' of climbing, including a solid, sustained climb, rollers, flats and a rapid descent. Three of the four roads are lightly traveled. Most of the vehicular traffic will be on La Cañada and at the beginning of Duval Mine Rd. The RR track crossing at Duval Mine and Mission intersection has been rebuilt, take care, nonetheless. The Start/Finish is uphill and straight, excellent for spectating. It is a short walk from the intersection of Duval Mine Road and Continental Road. No parking at the finish line.

Sign-in: At the Start – see Start Locator Map. Open one hour before and closes 10 minutes before assigned Start time.

Starts: Riders stage in order by groups **on Continental Road** south of Duval Mine Road. Lead and follow vehicles will be staged in the lot next to Sign-in and will take their place prior to the start of each field. Team vehicles may NOT have rear mounted bike racks. The start is neutral until all riders have safely turned onto Duval Mine Rd. The course runs clockwise.

Bonuses: Intermediate bonuses are 3-2-1 points (amateurs) or 3"-2"-1" (Pro-1-2). Pro-1-2 Finish bonuses are 10"-6"-4".

Course Directions: From the Start on Duval Mine Mission, Helmet Peak, La Cañada, Duval Mine. Approximate distance 21 miles. **NOTE: Use only the right-hand lane on La Cañada Dr.**

Directions to the Start: From Interstate 19 **take Exit 63**, W. Continental Road and head west approximately 6 km (3 to 3.5 miles) to parking area. **Avoid the Sahuarita and Duval Mine exits** as these will put you on the course!

Feed zone: Feeding from the feed zone is allowed on all but the first lap of each race. The feed zone is near the intersection of Helmet Peak Rd and W Sahuarita Rd. See the course map.

Directions to Feed Zone: Traffic going on course clockwise to the feed zone must leave at least 15 minutes before the first race in the wave (7:45 am or 10:25). Past these times, only counterclockwise traffic will be permitted. Parking is on the NE of the corner in a small gravel lot. Please do not park vehicles on the course itself.

Finish: Riders will have the full width of the road for the final 200M of the race. "Jumping" across the centerline before the designated flagged location are subject to penalties which may range from relegation to last on the stage and a points penalty or 2:00 time penalty, up to Disqualification and recommendation for suspension (for especially dangerous moves, as determined by the Race Jury).

Doping Control: Notified by chaperones at the Finish Line.

Medical: At the Finish tent.

Parking: Continental Road only (see map).

NO PARKING whatsoever in Start/Sign-In area from Thursday through Saturday. Non-staff vehicles and/or campers may be fined and towed. Access to the course from Continental Rd only. Continental may be open to two-way traffic. Please do not block the road.

Podium/Awards: In the Start area. See Start Locator Map. Top 3 riders in each field are required to report to the podium area at least 10 minutes before the following times. Awards are to begin no sooner than:

10:00 – Men: Cat 4; Jr field

12:40 – Women Pro/1/2

10:45 – Women: 4/N; Jr; 60+, 70+ field

15:15 – Men 2/3

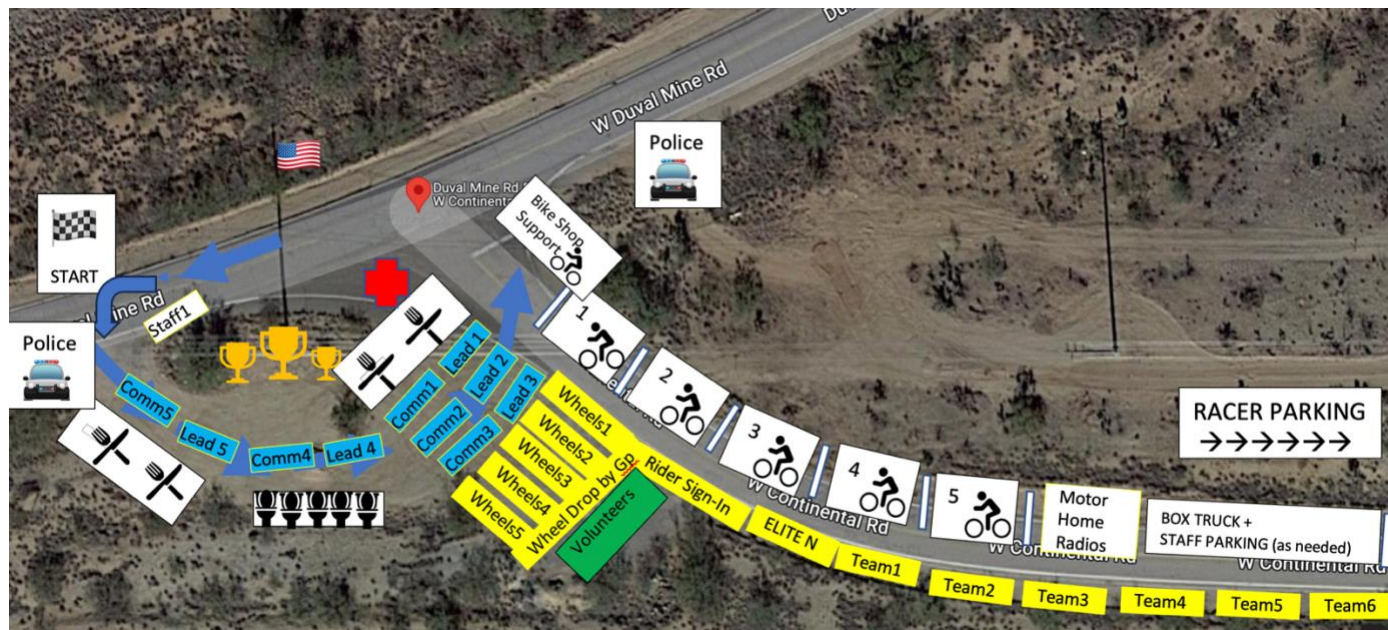
11:15 – Men 60+ Cat 1-4

15:30 – Men 40+ Cat 1-3

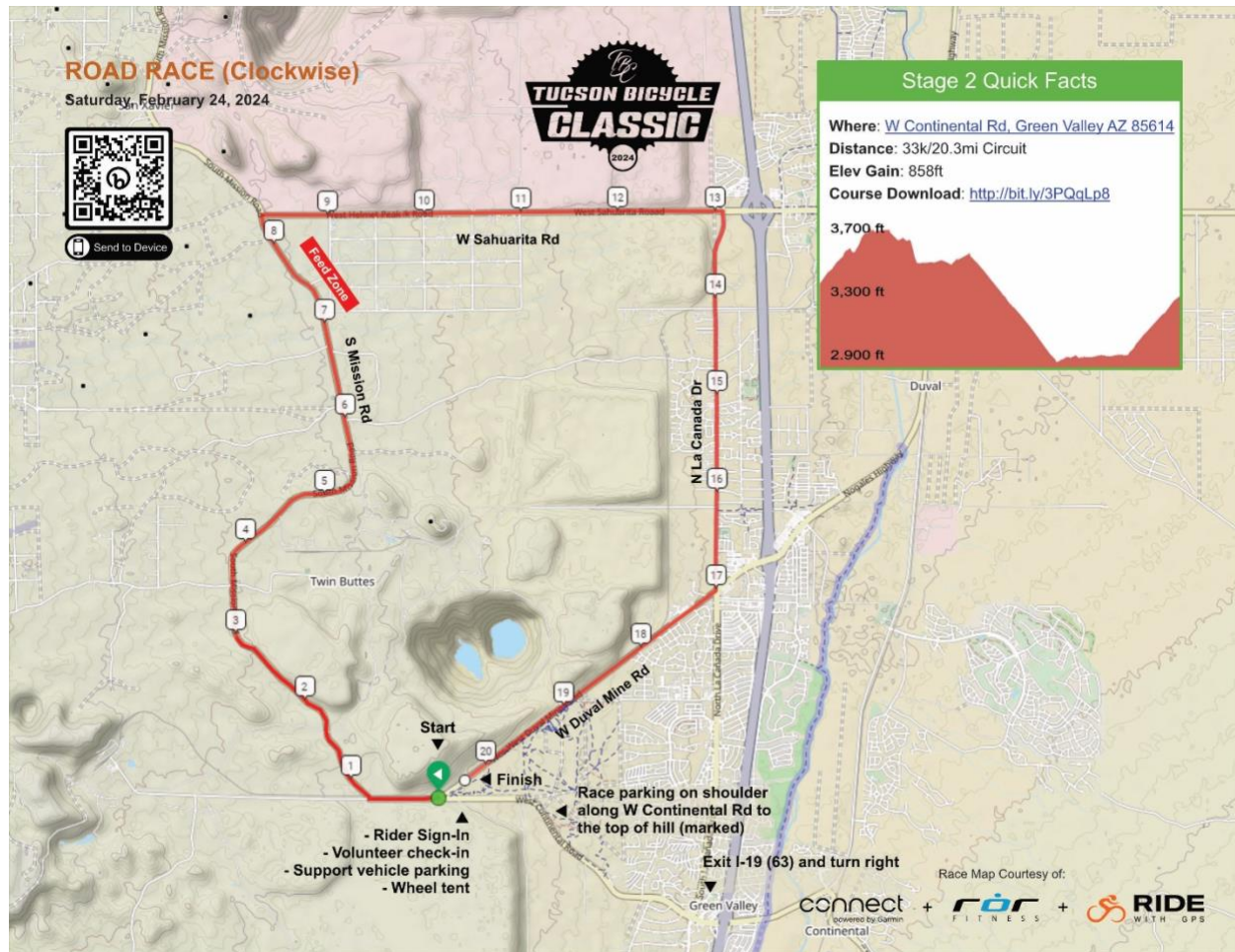
12:15 – Women 3 & 40+ Cat 1-4

15:50 – Men Pro/1/2

SAHUARITA ROAD RACE - START & STAGING LOCATOR MAP (Numbers with cyclists and Wheels indicate order within each wave.)



SAHUARITA ROAD RACE - COURSE MAP



STAGE 3: ORO VALLEY s RACE p/b RUTLEDGE DENTAL RACE DETAILS



Start	Categories	Bonus Laps	Length
8:00	Men 4	15 min	30 min
8:45	Men 40+ Cat 1-3	20 min	45 min
9:45	Men 60+ Cat 1-4	15 min	30 min
10:30	Women: 3 & 40+ Cat 1-4	20 min	40 min
11:25	Women: 4/Novice & 60+ Open	15 min	30 min
12:10	BREAK / Awards		
12:40	Men 2/3	25 min	50 min
13:45	Women Pro/1/2	3 int + Finish	75 min
15:15	Men Pro/1/2	3 int + Finish	75 min

Sign-in: Staging area organization tent.

Warm-Up: Please refer to the **Warm-Up Zone Map** on the next page. Warming up on city streets is prohibited.

Staging: In Naranja Park on Musette Dr. Use the bike path to get to the Staging area. See map.

Starts: Start times are dependent upon timing of previous race finishes.

Coned Areas: Riders must always race within the coned racecourse enclosure. Riding outside of the cones is equivalent to a centerline violation.

Amateur Points Bonuses: 3-2-1 at about the half-way point of the race.

Pro-1-2 Time Bonuses: The intermediate time bonuses are at the finish of Laps 3, 6, and (if 10 or more total laps are raced) Lap 9 for 3"-2"-1". There are Finishing time bonuses of 10"-6"-4".

Doping Control: Notified by chaperones at the Finish Line.

Medical: Near the Finish line.

Feed Zone: There will be no Feed Zone unless announced in advance by the Chief Referee. The provisional feed zone is located about 200 m west of the entrance into Naranja Park on the uphill. Provisionally allowed feeding is prohibited on the first 4 laps and last lap.

Directions to the Start: From Copper Creek Elementary School, proceed north on Copper Spring Trail to Tangerine Road, then right to the north entrance of Naranja Park.

Primary Racer Parking: Copper Creek Elementary School lot, 11620 N Copper Spring Trail, Oro Valley, AZ 85737. More information will follow in Rider Communiques. **There is NO racer parking inside of Naranja Park.**

Alternative Racer Parking: Oro Valley Public Library, 1305 W Naranja Dr, Oro Valley 85737

Wheels & Support: Elite Racing Service will provide support in the pits. Teams and riders may leave wheels and offer support in the pits. Feeding is not permitted.

Controls: The local police have the ultimate jurisdiction over all civilians, including racers and team managers. You are a guest here. Instructions given by a police officer must be adhered to (unless you like jail). Please respect the local authorities.

Podium/Awards: Final awards are presented at the podium in the large tent. The following riders (top 3) are required to report to the podium area immediately after the finish of their race:

- Men Cat 4 (top 3) and Best: 13-14, 15-16, 17-18, 40-49, 50+
- Men 40+ Cat 1-2-3 and Best 50+ Cat 1-2-3
- Men 60+ Cat 1-4 and Best 65-69, 70+
- Women Cat 3 and Best 40-49, 50+
- Women Cat 4/Novice and Best 13-14, 15-16, 17-18, 60-69, 70+
- Men 2-3
- Women Pro-1-2 and Best U24
- Men Pro-1-2 and Best U23

ORO VALLEY CIRCUIT RACE p/b RUTLEDGE DENTAL – WARM-UP ZONES

Rider Warm-up zone

Event date: Feb. 23, 2025



Attention riders: A safe corridor has been established for riders to warm up and cool down as indicated above, which is close to rider parking and to the north entrance of Naranja Park. All riders must enter and exit Naranja Park only through the north entrance, because the south entrance is reserved for spectators. No vehicle parking allowed inside of Naranja Park. Riders are expected to use the warm-up zone and especially not to cross the median on the north side of the warm-up zone into active traffic (duh). Any rider observed crossing the median on the north side of the warm-up zone into the vehicle lane may be severely penalized up to DQ.

Riders—please use the warm-up zone—we made it for you.

ORO VALLEY CIRCUIT RACE p/b RUTLEDGE DENTAL COURSE MAP



SPONSORS

We are most grateful for our sponsors. Without their support this event would not have been possible. If given a choice, please patronize our race sponsors and thank them for being a part of the Tucson Bicycle Classic.

MAIN SPONSORS



BIKE SHOPS



IN-KIND SPONSORS



NON-PROFIT CHARITY



APPENDIX I. DRUG TESTING**INFORMATION REGARDING DRUG TESTING****SELECTION OF RIDERS FOR DOPING CONTROL**

By registering to compete at this event you have consented to be subject to drug testing and adhere to the penalties associated with an anti-doping rules violation. All registered competitors are subject to testing and, if chosen for drug testing, are required to comply with the applicable rules. Noncompliance or refusing to be tested will result in the same penalties as a doping violation.

NOTIFICATION OF ATHLETES

When the U.S. Anti-Doping Agency ("USADA") is conducting testing at your race the cyclists selected for doping control will be notified and escorted by a chaperone to the Doping Control Station. USADA plans to have chaperones available to locate and escort all cyclists selected for testing.

APPLICABLE RULES

USADA will conduct testing in accordance with its Protocol. A copy of and additional information concerning the USADA Protocols are available online at <https://www.usada.org/athletes/testing>. "Refusing, or failing without compelling justification, to submit to sample collection after notification as authorized in applicable anti-doping rules or otherwise evading sample collection" is an anti-doping rule violation.

UNITED STATES ANTI-DOPING AGENCY

The United States Anti-Doping Agency is the independent anti-doping agency for the Olympic Movement in the United States. USADA is dedicated to eliminating the practice of doping in sport, preserving the well-being of sport and ensuring the health of athletes through drug testing, research initiatives and educational programs.

PROHIBITED CLASSES FOR EVENT TESTING

USADA will test for the classes of substances and methods prohibited by the World Anti-Doping Code. For in-competition testing urine samples are tested for the following categories of substances: anabolic agents, hormones, beta-2 agonists, anti-estrogenic substances, diuretics, stimulants, narcotics, cannabinoids (i.e. marijuana), glucocorticosteroids, alcohol and beta-blockers; additionally, the following methods such as blood doping, gene doping and pharmacological, chemical and physical manipulation are also prohibited.

For more detailed information or a non-exclusive list of substances within each category listed above, visit the USADA web site at <https://www.usada.org/wp-content/uploads/wallet-card.pdf> for the USADA Wallet Card.

Further information about the drug testing, the protection of your rights and the status of specific medications on the 2024 WADA Prohibited List is available from the USADA Drug Reference On-Line at <http://www.usantidoping.org/dro> When in doubt athletes should check with these resources.

Please remember that even over the counter or prescription medications can contain a banned substance that could cause a positive test result and a doping offense. Dietary/nutritional supplements including vitamins, minerals and amino acids are completely at the athlete's risk, even if the supplements are labeled 'approved' or 'verified.' If you take dietary/nutritional supplements you may test positive for a prohibited substance which is not disclosed on the product label. This would result in a doping violation and sanction. Always check with your team doctor or the USADA Drug Reference Line before taking any medication.

DOPERS SUCK!

USA Cycling Policy VII – Upgrades

General Upgrade Policies

- Only races permitted by USA Cycling, another UCI affiliated National Federation, or another organization upon written agreement by USA Cycling will be recognized.
- Races for upgrades will be recognized that date back 36 months from the upgrade request.
- Upgrade points are based on the overall placing in the entire field, not broken out by category within the field.
- Riders who have upgraded will start with a zero race points balance in their new category. Where indicated in the policies, clinic points may be carried over (road and track 4>3).
- Junior and Youth riders are exempt from mandatory upgrades for points earned in junior and youth races.
- Juniors and Youth who earn points in Elite or U23 races in Road, Track and CX are subject to mandatory upgrades with those points only up to Category 3.
- Series: Riders who are more than halfway through a series of ten races or less may request a one-time waiver of mandatory upgrade with approval from the series director and USA Cycling.
- Professional: A Professional is a member of a UCI registered team in that discipline (note: “Pro” is an ability level in MTB, and a Professional would race in the Pro MTB category).
- A rider who feels like they have advanced too quickly may request a downgrade through their USA Cycling account, with the request subject to review. Riders may not downgrade to the Novice category in any discipline.
- A rider may be downgraded by USA Cycling for the following reasons: unsafe riding, lack of ability to compete in current category, or lack of placing within current category.
- If you are Pro or Cat 1 for Road, you are eligible to request an upgrade to Cat 2 for other disciplines (MTB, CX, or Track); these requests require approval from the upgrade coordinator before being granted.
- Road Discipline: Points awarded for for Stage Race G.C. (Cat 3>2, and Cat 2>1).

ROAD UPGRADES				
NOVICE	CAT 4	CAT 3	CAT 2	CAT 1
UPGRADE ELIGIBLE → • 5 Finishes in Road Races or Critériums or Clinics	UPGRADE ELIGIBLE → • 20 Points in 36 Months • 20 Pack Finishes (may include 3 Gran Fondos / Gravel Events)	UPGRADE ELIGIBLE → • 30 Points in 36 Months	UPGRADE ELIGIBLE → • 35 Points in 36 Months	ELIGIBLE FOR → • Domestic Elite Team • Division 2 Team • World Tour Team • UCI Races • National Team
MANDATORY → • 10 Points in 12 Months	MANDATORY → • 30 Points in 12 Months • 3 Wins in a Field with 21+ Starters in 12 Months	MANDATORY → • 40 Points in 12 Months • 3 wins in a Field with 21+ Starters in 12 Months	MANDATORY → • 50 Points in 12 Months • 3 Wins in a Field with 50+ Starters in 12 Months	

UPGRADE POINTS FOR MASS START RACES					
PLACE	5-10 STARTERS	11-20 STARTERS	21-49 STARTERS	50-69 STARTERS	70+ STARTERS
1	3 pts	7 pts	8 pts	10 pts	11 pts
2	2 pts	5 pts	6 pts	8 pts	10 pts
3	1 pts	4 pts	5 pts	7 pts	9 pts
4		3 pts	4 pts	6 pts	8 pts
5		2 pts	3 pts	5 pts	7 pts
6		1 pts	2 pts	4 pts	6 pts
7			1 pts	3 pts	5 pts
8				2 pts	4 pts
9				1 pts	3 pts
10					2 pts
11					1 pts