



TECHNICAL GUIDE

March 3-5, 2023

A USA Cycling Stage Race Event 9370
Permit # 2023-6679
Updated 2/01/2023



TUCSON BICYCLE CLASSIC TECHNICAL GUIDE

Welcome!

Welcome to the 35th Annual Tucson Bicycle Classic - Southern Arizona's premier three-day USA Cycling stage race!

We are proud to continue to offer equal prize lists for Men and Women. TBC boasts equal *race distances* for Men and Women across *all categories*, providing one of the few equal racing opportunities for women's events. For women new to racing, we've set up a New Women Racer clinic.

This race is a stage race based on accumulated time. Therefore, all participants must start and finish each stage before being permitted to start the next stage. Each rider receives a time in General Classification (GC), on which the prize payouts and awards are based. Daily GC jerseys are awarded to each *grouping* racing together. "Best" sub-category winners on GC also receive a jersey after the last stage.

For 2023, we have two new courses that we think you'll like.

Stage 1 Pistol Hill Prologue: A short but challenging prologue on a closed course. Pistol Hill is well regarded by local riders.

Stage 2 Sahuarita Road Race: A 33 km (20.5 mi) loop featuring 300 m (1000 ft) of climbing/lap and a long, straight uphill finish.

Stage 3 Oro Valley Circuit: A 4.2-mile circuit; 224 feet of climbing per lap with a finish in beautiful Naranja Park.

We hope you enjoy your stay in Arizona. Be sure to visit and support our local businesses and race sponsors.

Marco Colbert – Race Director

Tucson Bicycle Classic

<https://www.tucsonbicycleclassic.com/>

info@tucsonbicycleclassic.com



TUCSON BICYCLE CLASSIC TECHNICAL GUIDE

Table of Contents

Race Headquarters	- 2 -
Host Housing	- 2 -
Schedule.....	- 3 -
Race Regulations.....	- 4 -
Registration	- 4 -
Eligibility.....	- 4 -
Packet Pick-Up / Confirmation	- 4 -
Team Manager Meeting	- 5 -
Leaders Jerseys.....	- 5 -
Race Numbers	- 5 -
Doping Controls.....	- 6 -
Timing, General Classification.....	- 6 -
Junior Gearing	- 7 -
Sign-In.....	- 7 -
Technical Support	- 7 -
Radio Communications.....	- 8 -
Center Line Regulations.....	- 8 -
Mixing of Fields.....	- 8 -
Results	- 8 -
Photography & Videography.....	- 9 -
Protests	- 9 -
Awards/Podium.....	- 9 -
Hospitals & Medical Aid	- 10 -
Categories & Prizes.....	- 11 -
Prize List Distribution	- 12 -
– Stage 1 –.....	- 13 -
– Stage 2 –.....	- 15 -
– Stage 3 –.....	- 18 -
SPONSORS	- 21 -
APPENDIX I. Drug Testing.....	- 22 -
APPENDIX II. Foreign Permission Letter	- 23 -



Staff

Race Director – Marco Colbert
Crew Chief – Tom Schuler
Assistant Crew Chief - Carl Newberg
Technical/Teams Director – [Dorothy Abbott](#)
Volunteer Coordinator – Brian Ornstein
Web Master - Craig Harding
Marketing & Media Director
 Bekah Collins, Good News
 Communications
Podium
 Kari Ann Pappas
 Beth Rice
Race Committee
 Ignacio Rivera de Rosales
 Alain Lambert
 Tom Collins
Host Housing - Paul Wiederhold
Assistant Volunteer Coordinator:
 Frank Cundiff
 Mallory MacRostie
Women's New Racer Program:
 Lauren Hall
 Kim Lucie
 Mallory MacRostie

Race Officials

Chief Referee - [Karla Gendler](#)

Assistant Referees:

Ted Frohling
Trish Black
David Able
Albert Faria
Kurt Kreachner
Rob Fleckenstein
Tom Gonzales

Chief Judge - [Tracy Barclay](#)

Assistant Judges:

Barb Frohling
Nancy Ellis

Timing and Results

RaceDay Event Management

Pro Neutral Support

Elite Racing Service

Race Headquarters

The official race headquarters for packet pick-up and team manager meeting is

Bicycle Ranch Tucson
7090 North Oracle Road
Tucson, AZ 85704
520-219-4311

Host Housing

Please refer to the Tucson Bicycle Classic website for information on available host housing. Host housing is limited. The website provides a tool to match up potential hosts with teams. Pro fields have priority. Meals and transportation are not included with host housing.

Host Hotels

See <https://www.tucsonbicycleclassic.com/>

Holiday Inn Express Oro Valley

11075 N Oracle Rd, Oro Valley, AZ 85737
Phone: 520-544-2100

Westward Look Wyndham Grand Resort & Spa

245 E Ina Rd., Tucson, AZ 85704
Phone: 520-297-1151

La Posada Lodge & Casitas

5900 N Oracle Rd, Tucson, AZ 85704

Ramada by Wyndham Tucson

777 W Cushing St., Tucson, AZ 85745
Phone: 520-239-2300

Hotel McCoy

720 W Silverlake Rd., Tucson, AZ 85713
Phone: 844-782-9622



TUCSON BICYCLE CLASSIC TECHNICAL GUIDE

Schedule

Online Registration December 11, 2022
through midnight MTN time February 28,
2023.

Thursday, March 2

At **Race Headquarters:**

- Pro Categories Packet/Bib Pickup
4:00 PM - 6:00 PM
- Amateur Categories Packet/Bib
Pickup 4:00 PM - 8:00 PM
- Pro Categories Team Manager
Meeting 6:30 - 7:30 PM

Friday, March 4

Prologue Time Trial

*Location: Pistol Hill, intersection of E. Old
Spanish Trail & S. Camino Loma Alta*

Saturday, March 4

Road Race

Location: Sahuarita

Wave	Field	Categories	Start
1.1	J	Men Pro/1	7:00
1.2	D	Men 4/Jr	7:03
1.3	E	Men 60+/65+/70+	7:06
1.4	C	Men Novice	7:09
1.5	A	Wom 4/Novice/Jr/60+/70+ // Youth 13-14	7:12
2.1	H	Men 2/3	11:15
2.2	G	Men 40+	11:20
2.3	F	Men 50+	11:25
2.4	I	Wom Pro/1/2	11:30
2.5	B	Wom 3/40+/50+	11:35

TIMES ARE ESTIMATES ONLY!!!!

Actual start times will be emailed and
posted online at the latest Thursday
after the close of packet pick-up.

Prologue Start Est.	Field	Categories
9:01	A	Jr 9-12 Boys & Girls
9:05	A	Jr 13-14 Boys & Girls
9:15	A	Wom 4/Novice/Jr/60+/70+
9:40	B	Wom 3/40+/50+
10:00	C	Men Novice
10:25	D	Men 4/Jr
11:15	E	Men 60+/65+/70+
11:40	F	Men 50+
12:15	G	Men 40+
12:40	H	Men 2/3
13:45	I	Wom Pro/1/2
14:20	J	Men Pro/1

Sunday, March 5

Circuit Race

Location: Oro Valley Naranja Park

Wave	Field	Categories	Start
1.1	B	Wom 3/40+/50+	7:00
1.2	A	Wom 4/Novice/Jr 15-18/ 60+/70+ // Youth 9-14	7:05
2.1	G	Men 40+	9:05
2.2	F	Men 50+	9:08
2.3	E	Men 60+/65+/70+	9:11
3.1	I	Wom Pro/1/2	10:50
3.2	C	Men Novice	10:53
4.1	H	Men 2/3	13:15
4.2	J	Men Pro/1	13:18
4.3	D	Men 4/Jr	13:21



Race Regulations

The Tucson Bicycle Classic is a three-day USA Cycling sanctioned stage race held under USA Cycling Permit #2023-4869, event 9370. The USA Cycling regulations and scale of penalties apply. All races are subject to USADA [Antidoping](#) regulations.

Except for fields containing the Novice category, riders must complete each stage to enter the next. Qualifiers must all complete the Stage 1 (Prologue) TT to enter the RR, and then complete the RR to enter the Circuit Race. Lowest overall time wins.

Fields containing **Novice** categories: Riders not completing a stage will be given an assigned time by the Chief Judge. This time will effectively remove the rider from winning the overall General Classification jersey(s) but will allow them to continue in the Stage Race.

Registration

Registration is on-line only and closes at midnight MT on Monday, February 28, 2023. Fees include the daily USA Cycling surcharge. Arizona sales tax, additional insurance, and the BikeReg service fee are extra.

<https://www.bikereg.com/tucsonbicycleclassic>

Entry Fees: As indicated on BikeReg. **No race day registration or race day category changes permitted**, however, entrants may modify their race category online through the close of registration, provided they are eligible to enter the category, the Team Limit is not exceeded, and any difference in entry fees are paid. Transfer of entries to other persons is not permitted. Races go rain or shine - **no refunds**; your entry is your commitment to race.

Optional event registration insurance may be purchased via BikeReg during online registration.

Eligibility

All racers must have a valid USA Cycling license, or a license from a governing body that is a member of the UCI. A standard USA Cycling event waiver must be signed by all riders. Any entrant under 18 also requires a parent's or guardian's signature on the waiver.

The race is "Team Limited" per USAC 3H2. Pro fields: a maximum of 8 riders per team. Other fields: a maximum of 10 riders per team.

Foreign Riders: All foreign riders at the 2023 Tucson Bicycle Classic will need an international race license that is in good standing with their home Federation and a Foreign Permission Letter from their home Federation that permits the rider to race in the United States during the dates March 3-5, 2023. The letter must also specify one of the following:

- The rider is covered by medical insurance for racing in the United States
- The rider is not covered by medical insurance for racing in the United States and will provide proof of such coverage.
- The rider is not covered by medical insurance for racing in the United States and will purchase a USA Cycling 1-day license for each day of racing at a cost of \$15 per day.

See [Appendix II](#) for the form sample.

Packet Pick-Up / Confirmation

Thursday evening at the race headquarters:

- Amateurs: 4-8PM
- Pros: 4-5:30 PM
- Friday (last resort) pickup: at LEAST 1 hour before your assigned start, at the venue

You must present your racing license at this time. Novice riders may race on three one-day licenses for \$45 purchased through BikeReg.



TUCSON BICYCLE CLASSIC TECHNICAL GUIDE

Team managers may pick up numbers for their whole team with the proper rider racing licenses, foreign permission letters, and insurance proof as required.

Team Manager Meeting

Thursday evening at the race headquarters from 6:30 - 7:30 PM. If a team manager is not available, Pro category riders are highly encouraged to send a representative for their team. Important information will be covered. This meeting is mandatory to be eligible to have a car in the Sahuarita RR Caravan.

Leaders Jerseys

Eliel Cycling is the official custom cycling apparel sponsor of the 2023 Tucson Bicycle Classic.



General Classification (GC) Leader's jerseys will be provided to each of the Field leaders on GC after each stage. This jersey must be worn in the next stage. A location for the Team placard is reserved on these jerseys.



"Best" sub-categories as listed under [Awards/Podium](#) will be awarded at the conclusion of the final stage of racing. Ages are based on a rider's racing age on 12/31 of the current year.

Race Numbers

Racers will be provided two bib numbers. Both bib numbers must be worn all three

days, including Time Trial. The Pro field racers will also receive a frame number, which must be used during the road race and circuit race.

Numbers are to be worn on the right and left sides of jersey as illustrated, attached with pins. The bike frame number must be securely attached, preferably behind the seat post. They must be *clearly visible*.

Riders with long hair - please braid and/or put the hair in a bun.



Lost, cut, or damaged bib numbers must be replaced through the Technical Director. A replacement fee of \$10 for body numbers and \$5 for frame numbers will be charged. Hand-written replacements are not permitted.

Good Placement



- Frame number visible.



TUCSON BICYCLE CLASSIC TECHNICAL GUIDE

- Body number on the side panel, easy to read.
- Right side number on side of jersey.
- Left side number on or above jersey pocket in orientation shown.

Bad Placement



- Too high for camera and officials to read. If another rider blocked the bike number, this rider may not be scored.

Doping Controls

(DOPERS SUCK!!)

Doping controls are under the jurisdiction of USADA. A list of riders to be tested will be posted each day near the finish area tent and on the entrance to the anti-doping control facilities. It is the rider's responsibility to personally check to see if his or her name is on the list. Failure to appear results in a positive test.

See [Appendix I](#) for more information on doping control regulations.

Timing, General Classification

Timing follows USA Cycling regulations 3H4(b), using electronic timing. A new time is assigned when there is a difference of one second or more between the back of the rear wheel of the last rider in a group and the front of the front wheel of the first rider of the following group.

Prologue Time Trial: Stage 1 is run as a Prologue. The results are used to determine the Individual General Classification. Any rider who suffers a mishap during the prologue and is unable to complete the distance shall be permitted to race the following day, shall be placed last and given the time of the last rider completing the course in their category. The Chief Referee must be notified of the mishap.

General Classification is determined by the sum of the times (discarding fractions of a second) in all stages including the Time Trial Prologue, subtracting time bonuses and adding time penalties.

Ties: Ties in General Classification shall be broken in the following order until the tie is broken:

- 1) Adding in the fractions of a second from the time trials.
- 2) The sum of the placings in stages 2 and 3.
- 3) Highest place in the last stage ridden.

Bonuses: Time bonuses will be awarded as defined in the Stage details and tables, with intermediate time bonuses of 3" – 2" – 1" for select categories and finishing time bonuses for the road and circuit

race of 10" – 6" – 4" for all categories (by group). Bonuses are only taken into consideration for the individual general classification.

Hill Climb finishes: None of the road stages end in a hill climb finish for purposes of USAC 3H6(c)(ii). In cases of application of the 3K rule, the Race Jury shall decide.

Time Limits: Riders not finishing by the time the sweep vehicle arrives at the Finish line will be deemed to have abandoned (DNF) the race and may not continue the next stage. (Exception: Novice Groups)



Lapped & Overtaken Riders: A lapped rider or one who has fallen too far behind and considered to be out of contention *may* be called off the course by the Chief Referee or their designated race official. They will be given a finish time calculated by the Chief Judge.

Riders on different laps or in different fields may not give or receive pace from one another. A lapped rider must not interfere in any bonus sprint or finishing sprint and must ride sufficient laps at the end to cover the entire distance to qualify for a prize.

Junior Gearing

Junior gears are no longer restricted in road events. No roll-out! Select appropriate gears.

Sign-In

Signing in is required for both the Road Race and the Circuit Race. Sign-in closes 10 minutes before race's assigned start. At the Time Trial your start is your sign-in.

Failure to sign in may result in penalties according to USAC 8A5(L):

1ST offense -- \$20 FINE

2nd offense -- \$50 FINE AND DSQ

Technical Support

A sweep vehicle will provide transportation to the finish line but will not provide mechanical assistance.

Drafting of support vehicles is prohibited and is subject to time penalties, relegation, and/or disqualification (depending on the severity).

Amateur Fields:

Stationary mechanical support is offered through local bike shops at the start area of each race. See stage details for location.

- Bicycle Ranch Tucson – Women's New Racer Program (Thu)
- Sabino Cycles - ITT
- Oro Valley Bicycle - RR
- Tucson Endurance Performance Center - CR

Amateur Fields Stages 2 & 3: On-course support is wheels in/wheels out. Wheel tags will be available at packet pick up and at sign-in for Stage 2. Remove wheels from wheel bags prior to dropping them off at the designated locations. Wheels must be **tagged with your bib number, field letter, your name and phone number.** In case of a flat, the tag will be pulled from the wheel and inserted into your exchanged wheel. Complete the drop-off sheet, indicating front or rear wheel, and whether anyone on the team can use the wheels.

Wheels will be returned to the same general area as drop-off after each wave of racing. Tucson Bicycle Classic is not responsible for missing or left-behind wheels. Unclaimed equipment after the conclusion of Stage 3 will be donated to a Junior racing program.

Pro Fields Stages 2 & 3: Neutral Support is provided by **Elite Racing Service** by means of one car. Neutral service technicians will be clearly identifiable by the words ELITE on their uniforms and vehicles (automobiles and motorcycles) both before and in-race. Neutral service includes simple mechanical repairs, limited loaner wheels, or loaned race bicycles (crash victims: provide bicycle frame size, approx. saddle height, and pedal type to technician).

Technicians will have limited access to 12 and 11 speed Shimano/SRAM/Campagnolo compatible wheels (rim-brake wheels and disc brake wheels with 140/160 rotors available) in the event of flat tires or wheel failure. These wheels are provided on a first come, first serve basis per race.

Riders who are issued loaner equipment will have their race registration credentials noted and be solely responsible for the return of loaner equipment **immediately** following the completion of their event (at the finish-line area). This equipment is needed to support the next wave of races.

Questions or unique equipment concerns are to be addressed with Elite Racing Service before their event.

mike@eliteracingservice.com



Pro Field Team Vehicles – Road Stage 2:

A maximum of six team vehicles will be allowed on the Stage 2 Road Race to provide **mechanical assistance only**.

Feeding from cars is prohibited.

Eligibility: A team representative who will be in the team vehicle must be present at the Thursday Team Manager Meeting. Vehicles exceeding 1.66 meters in height will be at the back of the caravan, according to height. **Rear mounted bike racks and tinted or wrapped windows are prohibited.**

Eligible team cars will be numbered according to the best rider on the team in General Classification. Caravan team vehicles must be in the staging area at least 40 minutes before the start of the waves of riders, clearly identified with the team's name, and equipped with a radio (see below). They be numbered by the race organization in the front and rear windows.

Stage 3 Pro Teams Support: Teams will be permitted to set up in the designated stationary support location. Wheels and/or bicycles may be exchanged in this area. Team cars are not permitted on the course.

Radio Communications

Per USAC 1J6, Radio communications are permitted only in the Pro fields during the road race, and all fields during the Prologue. Audio playback devices are prohibited in all races.

Pro Fields Stage 2: Handheld radios will be distributed to the team cars allowed in the caravan who are staged by 6:50AM (wave 1) and 10:35 (wave 2). Radios must be returned *immediately* after the finish of Wave 1 to be used for the Wave 2 race.

Center Line Regulations

The USA Cycling "Center Line Rule" is in effect the entire race for all categories, Time Trial Included. Exceptions, if any, will be

announced on the Starting Line. Penalties may include time penalties, relegation to last place for stage, or possible disqualification and/or suspension for Center Line Rule Violations.

Riders may encounter oncoming traffic during stages 2 and 3.

Mixing of Fields

Racers may *only* work with and take pace from riders in their field. This includes riders in a break-away or riders falling off the back. Know your race numbers and the 100's number series that you start with. The severity of the penalty corresponds to the severity of the offense.

Respect for Cycling's Image

Littering: You are guests here! Littering will not be tolerated. Pack it in/Pack it out. If witnessed by a police officer, offenders may be ticketed in addition to fine sanctions as called for in the regulations. In egregious cases, offenders may be disqualified from the race. If a specific rider cannot be identified the team may be fined. Green zones where bottles may be deposited are in the feed zones.

Public urination is not tolerated. Portable toilets are provided. If witnessed by a police officer, offenders may be ticketed.
USAC 8A5(M): 1ST -- \$50-100
2ND -- \$200 AND DSQ

Results

Provisional results for the top 10 in each field will be posted on-site after Stages 2 and 3. Final field results for each Stage and General Classification will be posted online at www.tucsonbicycleclassic.com. In addition, field results will be emailed to participants at the email address provided through BikeReg.



Photography & Videography

This constitutes formal notice that any or all images of entrants in the race or onsite at the race venue may be used by the promoter and its agents for advertising, trade, and any other lawful purposes. By entering to race, each entrant gives consent for use of his/her name and photographic likeness to the promoter and its agents.

DRONES: County laws prohibit the flying of drones near or over any open roadways in Pima County jurisdiction. However, drones may be used to film the event within closed roads. Use of drones is subject to FAA regulations and requirements. Please do not fly directly over the course at any location during racing.

Protests

Protests concerning the order of finish or timing are lodged with the Chief Judge via [email](#) or in person. Protests concerning other sporting aspects are to be lodged with the Chief Referee via [email](#) or in person. Text messaging is *not* an acceptable form of protest.

Protests for the Prologue and Stage 2 must be received at least 1 hour before the start of the next stage. Protests for the final stage must be lodged within 15 minutes of the posting of the results. Past that time the results may be reviewed but no changes to the prize list will be made.

Awards/Podium

Riders are to appear for podium photos in racing attire. Street shoes are ok. No sunglasses. Bare headed or cap.
Time Trial: See Stage details. No podium.

Stage 2: A podium will be held for each field:

- top 3 stage finishers
- GC Leaders

See the stage details for time and location.

Stage 3: The following are required to present themselves for jersey and awards presentation:

- 1) the top **three** riders on the stage for each field
- 2) The winner of the field General Classification.
- 3) The top “best” rider on GC:
 - Women Jr 15-18
 - Women 60+
 - Women 70+
 - Junior 13-14 (top 3)
 - Junior 9-12 (top 3)
 - Women 40+
 - Women 50+
 - Women Pro/1/2 U24
 - Men Jr 15-18
 - Men 65+
 - Men 70+
 - Men Pro/1 U23



Hospitals & Medical Aid

In case of an emergency call 9-1-1. Local area hospitals have been advised of the event. Medical services will be available on site at locations indicated in the stage details or by ambulance services.

STAGE 1:

Non-critical: Northwest Emergency Center – 9 miles from venue (in Houghton Town Center)
10146 E. Old Vail Rd. Tucson, AZ 85747
520-574-7400

Trauma center: Banner University Medical Center South – 19 miles from venue
2800 E. Ajo Way
Tucson, AZ 85713
520-874-2000

Trauma center: Banner University Medical Center Tucson – 24 miles from venue
1625 N. Campbell Ave.
Tucson, AZ 85719
520-694-0111

STAGE 2:

Non-critical: Northwest Medical Center Sahuarita – 8 miles from venue
16260 S. Rancho Sahuarita Blvd
Sahuarita, AZ 85629
520-416-7100

Trauma center: Banner University Medical Center South – 28 miles from venue
2800 E. Ajo Way
Tucson, AZ 85713
520-874-2000

Trauma center: Banner University Medical Center Tucson – 32 miles from venue
1625 N. Campbell Ave.
Tucson, AZ 85719
520-694-0111

STAGE 3:

Oro Valley Hospital – 3 miles from venue
1551 E Tangerine Rd
Oro Valley, AZ 85755
520-901-3500



TUCSON BICYCLE CLASSIC TECHNICAL GUIDE

Categories & Prizes

Rider categories are as indicated below. Where riders race together in a field, they are racing for one General Classification result and prize list. However, separate jerseys and medals will be awarded as indicated below. See the footnotes below the table for more detailed information.

Field	Categories	Best **	Jerseys Awarded				GC Prizes	GC Places
			GC ITT	GC RR	GC CR	Best		
A	Wom 4/N and Open 60+/70+/U19		1	1	1		\$500.00	5 (comb.)
	Jr Wom 15-18 Open	Best Jr				1	Medals	3 places
	Wom 60+	Best 60-69				1		
	Wom 70+	Best 70+				1		
	Jr 13-14	n/a	*	*	*		Medals	3
	Jr 9-12	n/a	**		**		n/a	3
B	Wom 3 and Open 40+/50+		1	1	1		\$750.00	8
	Wom 40+	Best 40-49				1		
	Wom 50	Best 50+				1		
C	Men Novice		1	1	1		Medals	3
D	Men 4/Men 15-18 Cat 1-4		1	1	1		\$500	5
	Jr Men 15-18 Cat 1-4	Best Jr				1	Medals	3
E	Men 60+/70+ Open		1	1	1		\$500.00	5
	Men 65+	Best 65-69				1		
	Men 70+	Best 70+				1		
F	Men 50+ Cat 1-4		1	1	1		\$500.00	5
G	Men 40+ Cat 1-4		1	1	1		\$500.00	5
H	Men 2/3		1	1	1		\$750.00	8
I	Wom Pro/1/2		1	1	1		\$3,000.00	15
	Pro/1/2 U24	Best U24				1		
J	Men P/1		1	1	1		\$3,000.00	15
	Pro/1/2 U23	Best U23				1		
	TOTALS		10	10	10	10	\$10,000.00	

GC Jersey for first on GC for the field (combined color grouping)

"Best" Jersey awarded based on GC at the end of Stage 3.

* Medals for 3 places on GC

** One-day races. ITT awarded on Sunday



Prize List Distribution

The Tucson Bicycle Classic has worked hard to ensure we have equal prize lists for Men and Women. The breakdown per place is detailed in the table below based on total prize list, with categories racing in a field receiving a single prize list and General Classification, as indicated in the table above. The prize list distribution for the total prize lists are found in the table below.

Payout will be available at the race venue tent 15 minutes after the results of the Final General Classification have been posted and made final. Prizes not claimed within 90 days of the end of the 2023 Tucson Bicycle Classic will be voided and forfeited to the race organizer. No exceptions. Riders in contention for prizes or awards who cannot be present for the final awards ceremony must inform the race organizer in advance to receive permission. Failure to attend official awards ceremonies is subject to forfeiture of prizes.

Tax forms: Riders winning > \$600 (winners of Men Pro/1 and Women Pro/1/2) must complete the appropriate IRS form before receiving their prize payment. The form will be available at payout, or you may bring a completed form with you. US Citizens: [IRS Form W-9](#). Foreigners: [Form W-8BEN](#).

Non-resident aliens receiving prizes must submit Form W-8BEN. Failure to do so subjects the prize payout to 30% federal tax withholding.

PRIZE LIST DISTRIBUTION BY TOTAL PRIZES				
PLACE	\$3,000 Prize list	\$750 Prize List	\$500 Prize List	No Cash Prizes
1	\$ 900	\$ 225	\$ 210	Medal
2	\$ 450	\$ 125	\$ 110	Medal
3	\$ 300	\$ 100	\$ 70	Medal
4	\$ 250	\$ 80	\$ 60	
5	\$ 180	\$ 70	\$ 50	
6	\$ 150	\$ 60		
7	\$ 125	\$ 50		
8	\$ 110	\$ 40		
9	\$ 100			
10	\$ 90			
11	\$ 80			
12	\$ 75			
13	\$ 70			
14	\$ 60			
15	\$ 60			
Total	\$ 3,000	\$ 750	\$ 500	



– Stage 1 –

Prologue Time Trial

Course: uphill, 5.6k (3.5 miles). Course is **closed** to traffic the direction of the course. Center-line is enforced for local oncoming traffic.

Sign-in: Your start is your sign-in for the Prologue.

Schedule: The times in the table are a *general guideline*. Actual start times depend on the number of registered riders in each category. Refer to your actual assigned start time posted after the close of registration. Starts are under the control of the Chief Referee according to USA Cycling Regulations.

PROLOGUE STARTING ORDER

Prologue Start Est.	Field	Categories
9:01	A	Jr 9-12 Boys & Girls (Mixed)
9:05	A	Jr 13-14 Boys & Girls (Mixed)
9:15	A	Wom 4/Novice/Jr 15-18/60+/70+
9:40	B	Wom 3/40+/50+
10:00	C	Men Novice
10:25	D	Men 4/Jr 15-18
11:15	E	Men 60+/65+/70+
11:40	F	Men 50+
12:15	G	Men 40+
12:40	H	Men 2/3
13:45	I	Wom Pro/1/2
14:20	J	Men Pro/1

Starts: The order of starts is set by the race organizer. The defending Champion (Pros) may be started last in their group. Starts will be on 30-second start intervals with 5-10 minutes between race categories. Riders are to be in the ready area 15 minutes before their appointed start. Riders will not be hailed to the start. Know your start time. **Be there at least 10 minutes to your start!**

Equipment: No Time Trial bikes. Only bicycles conforming to USA Cycling mass-start road race bicycles may be used. Aero equipment is limited to helmets and wheels that are otherwise permitted in a mass-start event. No time trial bars or handlebar extensions are permitted. Bicycles may be weighed to comply for road bicycles.

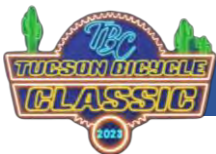
Doping Control: Notified by escorts at the Finish Line.

Medical: Near the Start line.

Driving Directions to the Start: Set your GPS to the intersection of E. Old Spanish Trail and S. Camino Loma Alta, in Vail, AZ

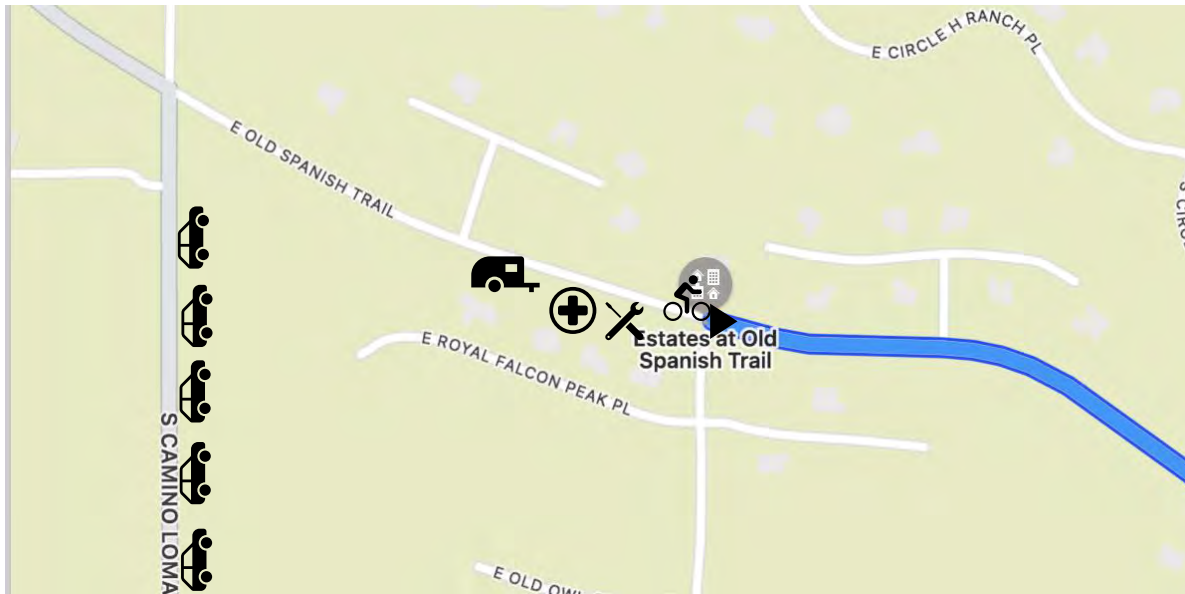
Parking: On the east shoulder of Camino Loma Alta (see map). After the finish, continue straight on E Colossal Cave Road. Turn right on Camino Loma Alta to your parked vehicle.

Podium: None. Field GC leaders pick up the jersey at sign-in for Stage 2. The top 3 finishers in each Field will receive a call-up to the front row for the start of Stage 2. Junior 9-12 medals awarded after Stage 3.

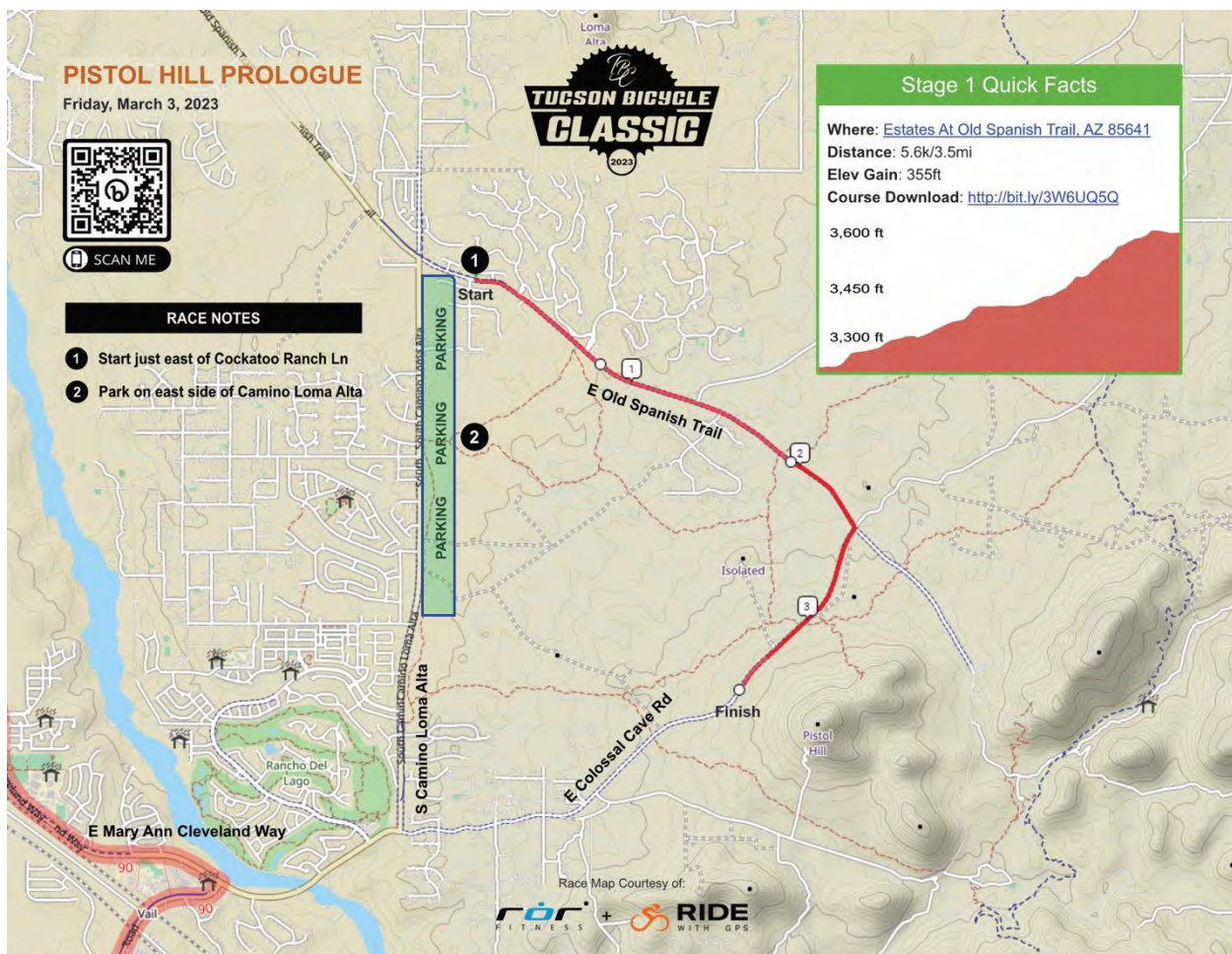


TUCSON BICYCLE CLASSIC TECHNICAL GUIDE

START LOCATOR MAP



COURSE MAP





– Stage 2 –

Sahuarita Road Race

Schedule and Time Table: Intermediate bonuses at the conclusion of each lap as listed in the chart – 3", 2", 1". Finish bonuses for all fields – 10", 6", 4". Times are based on the estimated average speed of the race leaders.

Leader Projected Finish of Lap #

Wave	Field	Categories	Start	1	2	3	4	Bonus Lap	Total Laps	Mi.	Est. MPH
1.1	J	Men Pro/1	7:30	8:16	9:03	9:50	10:37	1,3,F	4	82	26.3
1.2	D	Men 4/Jr 15-18	7:33	8:21	9:10			1,F	2	41	25.1
1.3	E	Men 60+/65+/70+	7:36	8:29	9:22	10:16		1,F	3	61.5	23.0
1.4	C	Men Novice	7:39	8:33	9:27			1,F	2	41	22.7
1.5	A	Wom 4/Novice/Jr/60+/70+ //13-14 (Mixed; 1 lap)	7:42	8:43	9:45			1,F	2	41	19.9
2.1	H	Men 2/3	11:15	12:04	12:53	13:42		1,F	3	61.5	25.0
2.2	G	Men 40+	11:20	12:11	13:03	13:55		1,F	3	61.5	23.7
2.3	F	Men 50+	11:25	12:18	13:12	14:05		1,F	3	61.5	23.0
2.4	I	Wom Pro/1/2	11:30	12:25	13:20	14:15	15:11	1,3,F	4	82	22.2
2.5	B	Wom 3/40+/50+	11:35	12:35	13:35	14:35		1,F	3	61.5	20.4

Course: A challenging 20.5-mile loop with approx. 1000' of climbing, including a solid, sustained climb, rollers, flats and a rapid descent. Three of the 4 roads are lightly traveled. Most of the vehicular traffic will be on La Cañada and at the beginning of Duval Mine Rd. The RR track crossing at Duval Mine and Mission intersection has been rebuilt, take care, nonetheless. The Start/Finish is Uphill and straight; excellent for spectating. It is a short walk from the intersection of Duval Mine Road and Continental Road. No parking at the finish line.

Course Directions: From the Start on Duval Mine, Mission, Helmet Peak, La Canada, Duval Mine. Approximate distance 21 miles. **NOTE: Use only the right-hand lane on La Cañada Drive.**

Sign-in: At the Start – see Start Locator Map. Open 1 hour before and closes 10 minutes before assigned Start time.

Starts: Riders stage in order by groups on **Continental Road** south of Duval Mine Road. Lead and follow vehicles will be staged in the lot next to Sign-in and will take their place prior to the start of each field. The start is neutral until all riders have safely turned onto Duval Mine Rd. The course runs clockwise. Youth 13-14 start at the back of Field A and race for 1 lap.

Doping Control: Chaperones will notify riders. Numbers may also be posted at the Finish line.

Medical: At the Finish tent.



TUCSON BICYCLE CLASSIC TECHNICAL GUIDE

Wheels & Support: Know your field letter (A-J). Wheels are to be dropped off according to the group. Wheel support for each field is “wheels in – wheels out”. Tagged wheels must be at the wheel drop-off by **6:55 am** for the 1st wave and by **10:35 am** for the 2nd wave. Wheels dropped off after these times may not make it into the support vehicle. See [Technical Support](#) for more information.

Feed Zone: Directions: Drive about 10 miles via Helmet Peak Rd (do NOT use Mission; no vehicles will be permitted northbound on Mission). Return to the start line via Mission and not Helmet Peak Rd. See course map for more details. **Feeding is prohibited on the first lap of the race.**

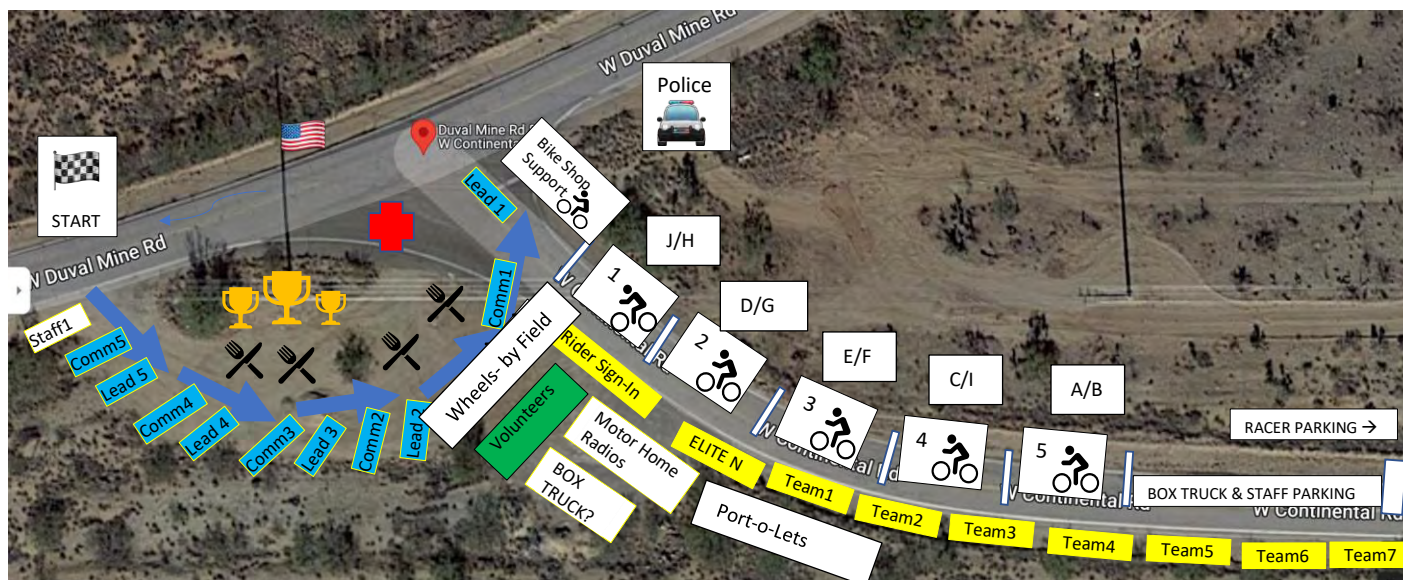
Directions to the Start: Plan extra time to get to the race start. There is a running event taking place the same day. From Interstate 19 take **Exit 63**, W. Continental Road and head west approximately 6 km (3 to 3.5 miles) to parking area. **Avoid the Sahuarita and Duval Mine exits** as these will put you on the course!

Parking: Continental Road only (see map). **NO PARKING whatsoever in Start/Sign-in area from Thursday through Saturday.** Non-staff vehicles and/or campers may be fined and towed. Access to the course from Continental Road only. Continental may be open to two-way traffic. Please do not block the road.

Podium/Awards: In the Start area. See Start Locator Map. Riders are requested to report to the podium area at least 10 minutes before the following times. Awards are to begin no sooner than:

09:40 D. Men 4/Jr 15-18	10:40 E. Men 60+/65+/70+	14:10 H. Men 2/3	15:10 B. Wom 3/40+/50+
09:50 C. Men Novice	10:55 J. Men Pro	14:15 G Men 40+	15:25 I. Wom Pro/1/2
09:55 A. 13-14		14:20 F. Men 50+	
10:00 A. W 4/Novice/Jr/60+/70+			

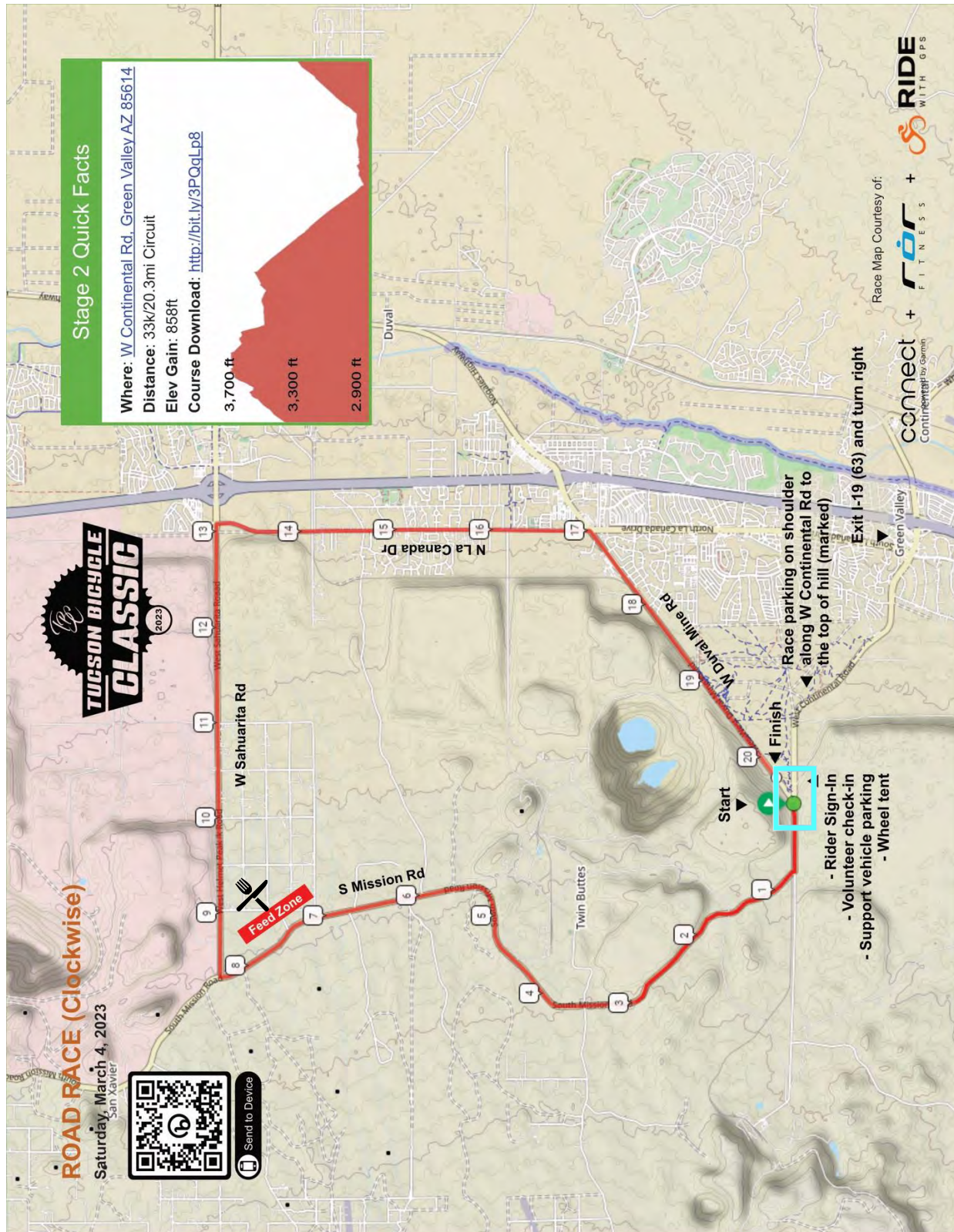
START LOCATOR MAP





TUCSON BICYCLE CLASSC TECHNICAL GUIDE

COURSE MAP: Course runs clockwise.





– Stage 3 –



Oro Valley Circuit Race p/b Rutledge Dental

Schedule and Time Table: Start times are dependent upon timing of previous race finishes. Intermediate bonuses – 3", 2", 1" at the finish of laps indicated. Finish = 10", 6", 4".

				Leader Arrives at (Projected Time) End of Lap #															
Wave	Field Categories			Start	1	2	3	4	5	6	7	8	9	10	11	12	Bonus	Mi	Est. MPH
1.1	B	Wom 3/40+/50+		7:00	7:12	7:24	7:36	7:48	8:00	8:12	8:24	8:36	8:48				3,6,F	38	21.0
1.2	A	Wom 4/Novice/Jr/60+/70+		7:05	7:17	7:30	7:42	7:55	8:07	8:20	8:32						3,6,F	29	20.1
2.1	G	Men 40+		9:05	9:15	9:25	9:35	9:45	9:55	10:05	10:16	10:26					3,6,F	34	24.8
2.2	F	Men 50+		9:08	9:18	9:28	9:39	9:49	10:00	10:10	10:21	10:31					3,6,F	34	24.1
2.3	E	Men 60+/65+/70+		9:11	9:21	9:31	9:42	9:52	10:03	10:13	10:24	10:34					3,6,F	34	24.1
3.1	I	Wom Pro/1/2		10:50	11:00	11:11	11:22	11:33	11:44	11:55	12:06	12:16	12:27	12:38	12:49	13:00	3,6,9,F	50	23.2
3.2	C	Men Novice		10:53	11:04	11:15	11:27	11:38	11:50	12:01	12:13						3,6,F	29	22.0
4.1	H	Men 2/3		13:15	13:24	13:33	13:43	13:52	14:01	14:11	14:20	14:29	14:39				3,6,F	38	27.0
4.2	J	Men Pro/1		13:18	13:27	13:36	13:46	13:55	14:04	14:14	14:23	14:33	14:42	14:51	15:01	15:10	3,6,9,F	50	26.9
4.3	D	Men 4/Jr		13:21	13:30	13:40	13:49	13:59	14:08	14:18	14:28	14:37					3,6,F	34	26.3

Directions to start - Naranja Park, Oro Valley:

The **only** access is

- South on North La Canada Dr
- left (east) on West Naranja Park (park at the library on the SE corner)
- Left on North Musette Dr to Start Staging area and parking

Parking:

- **Oro Valley Library:** Convenient racer parking (no equipment to schlep) is available at the - no pass required. SE corner of La Canada and Naranja Dr.
- **Naranja Park:** For those with support items. A parking pass is required, displayed on the dash of vehicles. Passes will be distributed in your packet at packet pick up.

- **Pro Teams:** A lot is reserved for Pro Teams in Naranja Park. See locator map.

Course: 6.8k (4.2 miles) with 224 feet of climbing per lap. The last turn before approaching the finish is fast and slightly downhill. Know your skills and abilities. Don't exceed them!

Staging: In Naranja Park on Musette Drive. **Youth 9-14** stage behind Field A.

Distances:

- 9-12: 2 laps (8.4 miles)
- 13-14: 4 laps (16.8 miles)

Sign-in: Staging area organization tent.

Wheels & Support: Elite Racing Service will support the Pro fields primarily, and secondarily to amateur waves not racing at the same time (wave) as the Pros.



TUCSON BICYCLE CLASSC TECHNICAL GUIDE

Tucson Endurance Performance Center will provide stationary support in a wheel pit past the feed zone. Teams and riders may also leave wheels and offer support at that location.

Doping Control: Chaperones to notify riders after the Finish.

Medical: Near the Finish line.

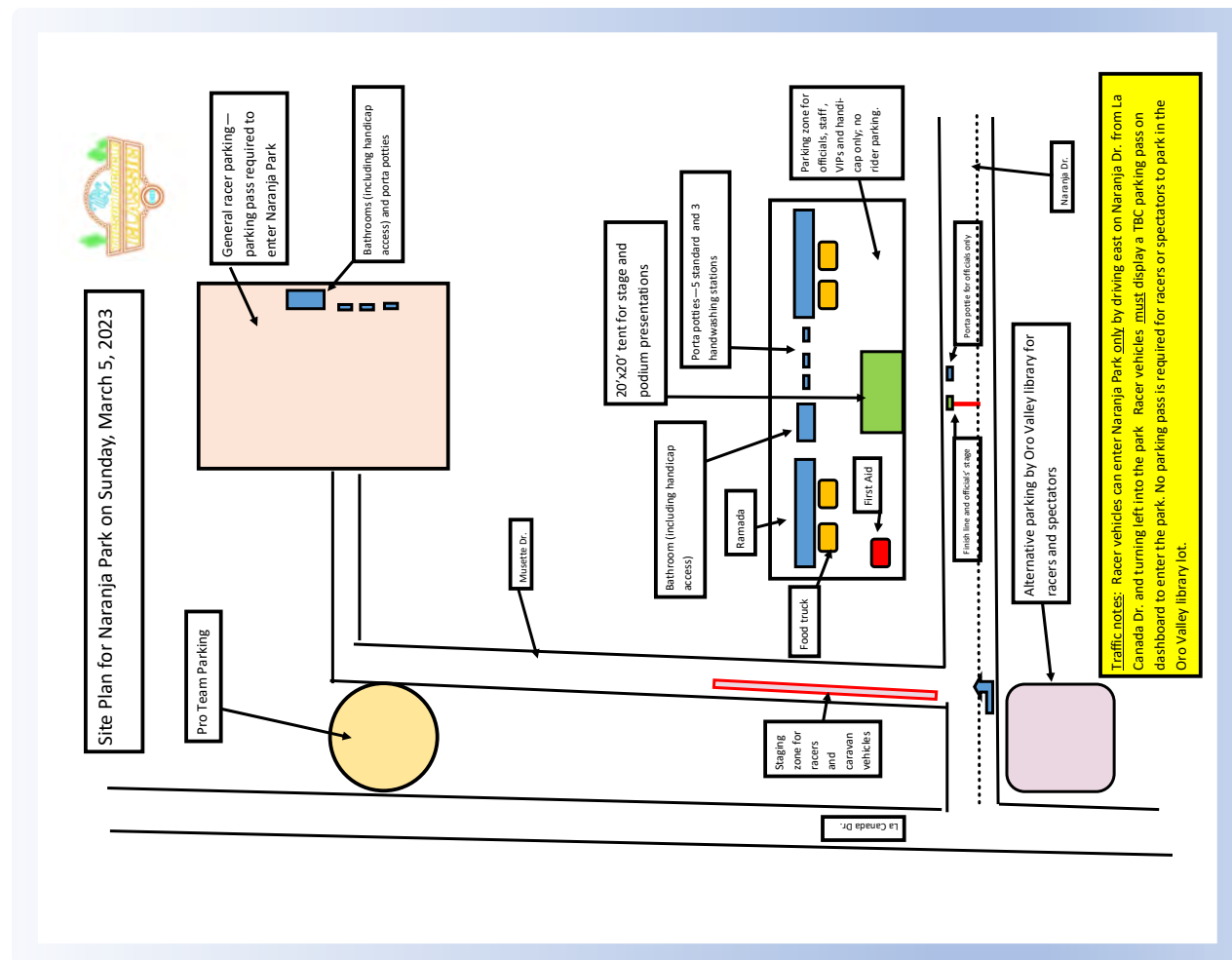
Feed Zone: Located about 200m before the entrance into Naranja Park. Feeding is prohibited on the first 4 laps and last lap.

Podium/Awards: See [Awards](#) for more details. Final awards are presented at the podium in the large tent.

Riders are requested to report to the podium area at least 10 minutes before the following times. Awards are to begin no sooner than:

9:10	A. Jr 9-12 (TT and CR)
9:20	A. Jr 13-14
9:25	A. Wom 4/N/Jr 15-18/60+/70+
9:45	B. Wom 3/40+/50+
11:00	G. Men 40+
11:05	F. Men 50+
11:10	E. Men 60+/65+/70+
12:30	C. Men Novice:
13:25	I. Wom Pro/1/2
14:55	D. Men 4/Jr
15:05	H. Men 2/3
15:25	J. Men Pro/1

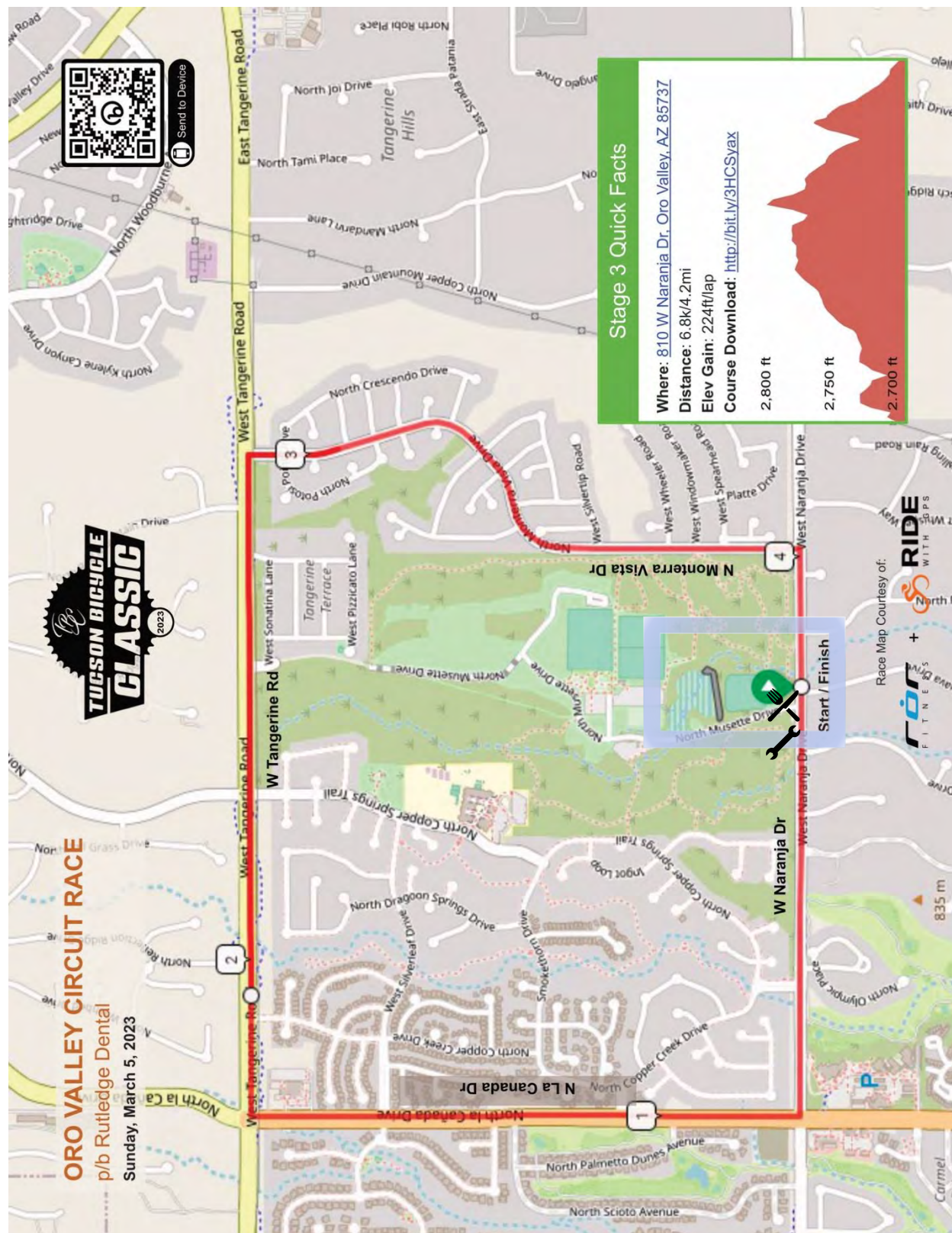
START/FINISH LOCATOR MAP (not to scale)





TUCSON BICYCLE CLASSC TECHNICAL GUIDE

COURSE MAP: Course runs clockwise

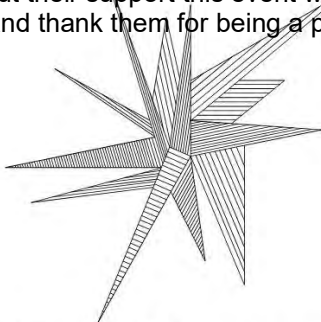




TUCSON BICYCLE CLASSC TECHNICAL GUIDE

SPONSORS

Many thanks to our sponsors! Without their support this event would not be possible! If given a choice, please use our race sponsors and thank them for being a part of the Tucson Bicycle Classic.



THE METEOR ARIZONA

THE GRAND CANYON STATE





APPENDIX I. Drug Testing

INFORMATION REGARDING DRUG TESTING

SELECTION OF RIDERS FOR DOPING CONTROL

By registering to compete at this event you have consented to be subject to drug testing and adhere to the penalties associated with an anti-doping rules violation. All registered competitors are subject to testing and, if chosen for drug testing, are required to comply with the applicable rules. Noncompliance or refusing to be tested will result in the same penalties as a doping violation.

When the U.S. Anti-Doping Agency ("USADA") is conducting testing at your race the list of cyclists selected for doping control will be posted at the finish line and at the Doping Control Station.

All riders, including any athlete who has abandoned the competition, are responsible for ensuring personally whether they are required to appear for doping control. All posted riders are required to report to the Doping Control Station unless their release from testing documented by a USADA Official in the field. If, after reporting to the Doping Control Station a posted rider is not required to provide a sample for purposes of doping control, their dismissal will be documented by a USADA Official.

NOTIFICATION OF ATHLETES

It is your responsibility to check the doping control posting even when chaperones are provided at events where USADA is testing. While USADA plans to have chaperones available to locate and escort all cyclists selected for testing, this is not the norm at UCI- sanctioned events. Given this, the lack of a Chaperone or Escort does not excuse a rider from testing. Should a rider fail to report to doping control within 60 minutes of notification, that rider will be subject to sanctions.

APPLICABLE RULES

USADA will conduct testing in accordance with its Protocol. A copy of and additional information concerning the USADA Protocols are available online at <http://www.usantidoping.org>. "Refusing, or failing without compelling justification, to submit to sample collection after notification as authorized in applicable anti-doping rules or otherwise evading sample collection" is an anti-doping rule violation.

UNITED STATES ANTI-DOPING AGENCY

The United States Anti-Doping Agency is the independent anti-doping agency for the Olympic Movement in the United States. USADA is dedicated to eliminating the practice of doping in sport, preserving the well-being of sport and ensuring the health of athletes through drug testing, research initiatives and educational programs.

PROHIBITED CLASSES FOR EVENT TESTING

USADA will test for the classes of substances and methods prohibited by the World Anti-Doping Code. For in-competition testing urine samples are tested for the following categories of substances: anabolic agents, hormones, beta-2 agonists, anti-estrogenic substances, diuretics, stimulants, narcotics, cannabinoids (i.e. marijuana), glucocorticosteroids, alcohol and beta-blockers; additionally, the following methods such as blood doping, gene doping and pharmacological, chemical and physical manipulation are also prohibited.

For more detailed information or a non-exclusive list of substances within each category listed above, visit the USADA web site at http://www.usantidoping.org/prohibited_sub/wallet_card.asp for the USADA Wallet Card.

Further information about the drug testing, the protection of your rights and the status of specific medications on the 2023 WADA Prohibited List is available from the USADA Drug Reference On-Line at <http://www.usantidoping.org/dro> When in doubt athletes should check with these resources.

Please remember that even over-the-counter or prescription medications can contain a banned substance that could cause a positive test result and a doping offense. Dietary/nutritional supplements including vitamins, minerals and amino acids are completely at the athlete's risk, even if the supplements are labeled 'approved' or 'verified.' If you take dietary/nutritional supplements you may test positive for a prohibited substance which is not disclosed on the product label. This would result in a doping violation and sanction. Always check with your team doctor or the USADA Drug Reference Line before taking any medication.



TUCSON BICYCLE CLASSIC TECHNICAL GUIDE

APPENDIX II. Foreign Permission Letter

To whom it may concern:

The following rider is a currently licensed member in good standing of the _____ and is granted permission to race in the United States of America from _____ through _____.

Name:

UCI ID:

Nation:

Team/Club:

Category:

Class:

The Cycling Federation further certifies (check one):

☐ The rider is covered by medical insurance for racing in the country(ies) specified above.

☐ The rider is not covered by medical insurance for racing in the country(ies) specified above and will provide proof of additional insurance.

☐ USA option only: The rider is not covered by medical insurance for racing in the country specified above and will purchase a USA Cycling 1-day license per day of racing at \$15 US each.

Sincerely,

(signed)

,

Note: This document is to appear on Federation letterhead. It may be emailed or presented as a printed version. All fields above are to be completed. It is to be signed.