

Table of Contents

	<i>Page</i>		<i>Page</i>
Foreword.....	2	Confirmation Classes.....	74-76
History of Church and Village.....	3-9	Mr. and Mrs. Ballwin Days	77
Exhibits A – S.....	10-55	Weddings	78-80
List of Ministers.....	56-62	Did You Know Tidbits	81-83
Heritage Sundays in 2005 – 2006 – 2007	63-67	Bibliography	84
Missions.....	68	Song— The Church by the Side of the Road....	85
Organizations.....	69-73		

Published: December 2008





Pastor's Introduction

It is my great privilege to be currently serving as pastor to Salem in Ballwin United Methodist Church. I have come to know Salem as a loving church family with roots that go back in the Ballwin area for over 150 years.

Salem Methodist Church was one of the original roots from which the whole community of Ballwin has sprouted, grown, and prospered. As well as its mission as a United Methodist Church, Salem church serves also as a center for the community as a whole. Many, many people throughout the generations have called Salem their church home, and many more in this community have been touched by Salem in other ways. It is known as the "church on the hill" even today.

Our heartfelt thanks to Helen Ralston for typing the manuscript, to Bob Vogt for the designing and printing of the book, and to Bill Buermann for the historical research, writing, and compilation, as well as for the inspiration for this wonderful record of Salem history.

Dedicated to the faithful of Salem church throughout the generations.

Rev. Julie G. Callaghan
August 14, 2008

About the Author

Bill Buermann was confirmed April 10, 1938, and has been a member at Salem for 70 years. His parents, Charles and Ada (Bopp) Buermann, were lifelong members at Salem. His paternal grandparents joined Salem after immigrating from Germany. His maternal grandparents and great grandparents were also members at Salem.

He has held a number of offices at Salem including Chairman of the Official Board (now known as the Administrative Council). He has also been Chairman of the work areas of Evangelism and Finance and was Church Treasurer for a number of years. He enjoyed singing in the choir.

Bill is a history buff and appreciated the opportunity to research the history of Salem.

He thanks the History Committee and the other individuals who have made this work possible.



Salem's History Committee

(From left to right)

Helen Ralston, Typist & Editor;
Bill Buermann, Author;
Bob Vogt, Design Layout & Printing

A History of Salem in Ballwin United Methodist Church Inc.

Researched and Written by Bill Buermann

Why did our forefathers choose Salem as the name for our church? Was it taken from the biblical passage in Hebrews 7:1-3? Does it mean Jerusalem? Note the last five letters spell "Salem". Is it because Salem is the English interpretation of the biblical name for peace, Shalom? Are there other possibilities? Perhaps we will never know for sure.

Salem has not always been the name of our church. From its formation in 1847 until the year 1871 it was known as the German Methodist Episcopal Church. From 1871 until January 2002 it was known as Salem Church of Ballwin Inc. It was in 2002 that the present name was adopted by Administrative Council action.

In trying to locate a copy of our Seal of Organization we have gone back to the Cincinnati Museum Center which houses the Nippert Collection of German Methodism. The first German Methodist Church in America was founded there in 1838 and Cincinnati served as the headquarters for German Methodism in this country. So far our search has not met with any success. However, we did find a seal on an old document that read Salem German Methodist Episcopal Church with a date of 1847. (*See Exhibit A*) This further complicates the issue since the stone panel inscription in the front of



the church does not include the word "Salem".

In a sense the history of Salem goes back another 50 years. A young man, 18 years of age by the name of John Ball, came to this area from

Kentucky with Daniel Boone when it was still Spanish territory. He was born in Virginia, and the reason for his being in Kentucky was that his father, James, had fought in the Revolutionary War, was wounded, and for his service received a warrant that entitled him to acreage in that state. I believe that John Ball's parents were also in Daniel Boone's party and that they acquired acreage in what is now the St. Louis County Government Center in Clayton. It was on a tributary of the River Des Peres. After disposing of the property they left Missouri and returned to Kentucky. Later John Ball purchased 400 acres on Grand Glaize Creek. At that time Grand Glaize and Fish Pot were beautiful little streams that have since been channelized. The Native Americans used Grand Glaize as they moved between the Meramec and Missouri rivers.

John Ball was converted to Methodism in 1809 by a circuit rider named John Chrane. He was possibly the first convert in Bonhomme Township. Mr. Ball took his conversion seriously. He became known as a class leader, and his home was used to hold services between visits from the circuit rider.

These visits were infrequent as the circuit rider originally covered an area from Cape Girardeau to Louisiana, Missouri, and 50 miles west of the Mississippi River. Later the area was reduced in size and extended from the Missouri River to the Meramec River and covered all of what is now St. Louis County and 50 miles to the west. In either case, one can see that the visits would be few and far between.

In 1837 Mr. Ball laid out the town of Ballwin and set aside a plot of ground for a place of worship as well as land for a cemetery. (*See Exhibits B and C.*) He named the town Ballwin because he thought it would win out in reputation and growth over its more prominent neighbor, Manchester. John Ball never saw this happen in his lifetime but from a population standpoint it is certainly true today.

During his lifetime he was an active worker in advancing the interests of the Methodist Church in the Ballwin-Manchester area. He was instrumental in the founding of

both Salem and Manchester churches. John Ball died August 31, 1859, and was buried in the community cemetery. Years later his body was moved to the Manchester Methodist Cemetery when the highway was widened. You will find his relatives buried in both Salem and Manchester cemeteries. The day prior to his death, though suffering from infirmities, he called his class together for the last time. He thanked God for all his goodness and urged his brothers to be faithful. His wife, Mary (Eoff) Ball, died October 19, 1866, and was buried alongside her husband.

Let us go back now to the year 1847 and see what Ballwin was like then and in the years following. Because the histories of the church and town are so inter-twined I feel that it is necessary to describe the environment in which people lived.

In 1847 Ballwin was a frontier village with 84 residents living in 12 homes. There were three business establishments that you would find in every frontier village. These were a general store, tavern, and blacksmith shop.

The early population was Anglo Saxon but by this time most had left the area and were followed by an influx of German immigrants. Since the Germans were opposed to slavery, there may not have been any slaves in the area at this time. Earlier the population of Bonhomme Township was one fourth slave.

Farming was the main occupation. Truck gardening and the raising of livestock were important. Crops grown were corn, wheat, oats, barley, and hay. Prior to the invention of the reaper and threshing machine the grains were cut with a scythe and cradle. A frail was used to separate the kernels from the hulls. The kernels were then taken to a grist mill to be ground. Because of the labor involved, wheat, barley, and oats were not as large a cash crop as corn. In many cases it was grown for the use of the family. This changed about 1870 when the first steam powered threshing machine made its appearance in the area. The threshing machines were used until the mid 1940's. One of the last ones used in the area is on display at the St.

James Missouri Farm Museum. Tractors began replacing horses in the 1920's. The first tractors had steel wheels with lugs.

What about utilities and other services? There was no phone service until 1900. Even then it consisted of party lines with the number of rings identifying your call. There was no electric until 1920. This was about 40 years after Thomas Edison invented the light bulb. The first radio station began broadcasting in 1921. Water was obtained from cisterns and wells. Water lines were extended from Manchester to Ballwin about 1940. They ran on the north side of Manchester Road in front of the church and extended to Old Ballwin Road. In the 1930's through the 1950's water was trucked into the homes that needed it at a cost of \$3.25 per tank load of 1000 gallons. This became necessary when the cisterns ran dry due to a lack of rainfall. There was postal service in the area as early as December 24, 1824, when a post office was opened in Manchester. Ballwin did not get its own post office until 1866. The mail was picked up at the train depot in Valley Park by buggy and later by car and delivered to the local post offices twice a day. During the Depression my father had this job. Later on buses provided this service from St. Louis.

It appears that there was always a doctor in the area. In the 1830's there was a Sam Smith. Other early doctors were Charles Zeinert, Charles Zappann, Frank Sandfos, and Rush Loving. It was in 1865 that Dr. Zeinert built a two-story house where he lived and practiced. Most dentistry was performed by doctors. There were resident dentists in the area in the early 1900's if not before. One of these was William Collins who had his practice in the Zeinert home. There may also have been itinerant dentists.

The historic Zeinert Home served multiple purposes down through the years until it was demolished in 2001 to make room for a shopping center. In 2001 it was known as the Coach House Restaurant. It was here that I was born and where my father practiced his blacksmith trade. He earned \$2.00 for shoeing a horse and 35 cents for sharpening a plow shear.

Photographers came into the area in the 1860's. They would ride out from St. Louis in their buggies, take pictures, and return to St. Louis to have them developed.

There were two newspapers at this time. The *Missouri Gazeteer* began publishing in 1808 and was the first newspaper west of the Mississippi River. In 1847 the *Missouri Republican* began. Ballwin residents could receive them by mail.

Manchester Road, sometimes called Market Road, was dirt--muddy in wet weather and dusty when it was dry. They didn't start to grade and rock it until 1849. I think it is quite likely that some of the members of Salem worked on the project. It proceeded at the rate of six miles per year although the pace was picked up when the Civil War loomed on the horizon. The road was needed since transportation at that time was basically by steamer on the Missouri River. Railroad transportation between the two points did not occur until in the 1850's. Manchester Road was later used as a mail route with service three times a week from St. Louis to Jefferson City.

Fire protection started with a bucket brigade and was replaced with a hand operated fire pump, mounted on a wagon, with a discharge hose and a suction hose. Volunteers organized in 1933. A tax supported fire district came in 1957. Metro West Fire District now has five fire stations which protect a population of 140,000.

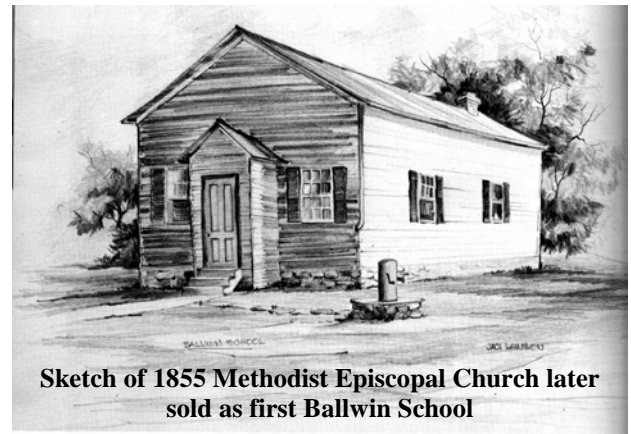
Law enforcement in the township and county was provided by constables, sheriffs, and justices of the peace. Early on Ballwin had a Farmer's Law and Order Protection Association. Whether this was more a fraternal organization is not known.

There were circuit courts that held three sessions a year. The justices of the peace were important in that they had power to issue warrants and hold preliminary hearings.

Ballwin had its first elected marshal in 1957, the same year that the tax supported fire district came into being.

Ballwin was always a part of Bonhomme Township, even before the town was laid out. In the early 1990's the boundaries were realigned and Ballwin is now in five townships. It was incorporated as the Village of Ballwin in 1950 and became a fourth class city in 1957.

There were no other churches in the immediate area in 1847 except for the Manchester Methodist Episcopal Church South where services were in English. The German Evangelical Zion Church at Ballas and Clayton Road was established in 1838. People could worship there in the German language and some of the founders of Salem were members there as noted in the church's excellent records. St. Joseph Catholic had a mission, St. Malachys, in 1839 but no building until 1851. St. John's Lutheran was formed about 1851. St. John's E & R followed in 1860. Ballwin Negro Baptist Church was organized in 1832 but rigid slave laws prevented them from building until 1853.



Sketch of 1855 Methodist Episcopal Church later sold as first Ballwin School

While Salem was organized in 1847, they did not erect a building until 1855 on a lot purchased from John and Mary Ball for \$20. (See *Exhibit D.*) This first building was a small white frame building. Some historians say it was of log construction. It was located on what was known as Elm Avenue.

A parsonage was added near the church (Main and Elm) in 1858 on a lot purchased from John and Mary Ball for \$10. (See *Exhibit E.*) This was done when a rented building which had previously served as a parsonage was destroyed by fire.



Sketch of first Parsonage

In 1855 Salem began what may have been its first service to the community when it started the first formal school in Ballwin. School was held in the church with the minister as the teacher. The German language was used. It continued for 14 years until District 45 of the Board of Education bought the building for \$800. (See *Exhibit F.*) The church reserved the right to conduct its services there until the present church was built in 1870.

Sometime later the church acquired additional property north of Manchester Road; however, the church was built on original property given by John Ball. Due to the relocation of Manchester Road the cemetery was also moved in 1882 to its present location north of Manchester Road on ground purchased from Sarah Ball for \$225. (See *Exhibit G.*) There are over 300 burials in the cemetery. Those who were disinterred were moved over a period of years to either the new Salem cemetery or the Manchester Methodist cemetery. The remains of John Ball and his wife, along with other family members, were moved to Manchester. There are other Ball family members buried at Salem. The parsonage was the only church property that remained south of Manchester Road.

The present church was built at a cost of \$4,500 and has been in continuous service since 1870. The first wedding took place there on January 3, 1871, when my grandparents, Henry Bopp and Mary Kessler, were married.

Salem is listed as a landmark by the St. Louis County's Historic Building Survey. (See *Exhibit H*) It could possibly be upgraded to a National Landmark, such as Manchester Methodist, if the effort were put forth.

The original building had a seating capacity of slightly over 100 and a membership of approximately 75. One can see the original size by where the ceiling is offset. It was heated by two wood burning stoves. Light was provided by four kerosene lamps that were raised and lowered by a cord.

The design is Romanesque Revival. It is of brick construction on a stone footing with a high gable composition roof. Some reports state that the bricks were made by slave labor. I don't believe this to be factual. The Civil War ended in 1865 and it is questionable that my great grandfather, Louis Kessler, on whose farm the bricks were made, ever owned working slaves. He was a German immigrant and they were opposed to slavery.

The original bell, still in use today, is mounted in the spire and is rung by use of a rope. The spire is octagonal and rests on a four-sided



pyramidal base. The bell was cast by the Buckeye Foundry in 1856. It was rung on joyous occasions such as the end of the war or the start of a new year. It was also tolled for funerals, one toll for each year in the life of the deceased. It



was also rung one half hour before the start of the services. This was called the "first bell" and its purpose was to alert the members that Sunday School was about to begin. The "second bell" sounded one half hour later. The bell was also rung for morning and evening worship services.

The exterior of the original building remains basically the same except that the green shutters that can be seen on some photographs have been removed. This was done so that storm windows could be installed. The shutters were more than cosmetic as they were used to shield the inside from the sun and to protect the

windows from storm damage. Most of the windows of clear glass are original. Windows on the upper level of the façade, opening into the choir loft, have semicircular heads and the lights have been cut to that shape. The openings on the main floor have segmentally-arched heads, as does the door.



Anchor plates for reinforcing rods are visible in several places on the exterior of the old section of the church. Those include the corners at the front of the structure and the spaces immediately above the three northerly windows on each side.

The balcony has the original sliding panels suspended from tracks in the ceiling so it can be closed off. Sunday School classes were held there. Present occupancy is limited to 18 by the fire code.

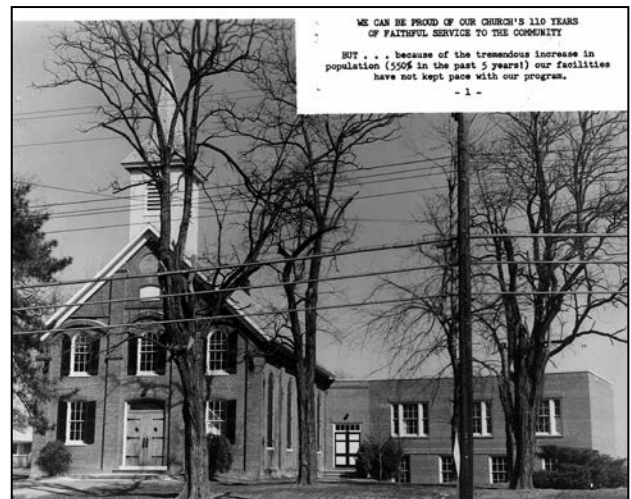
In 1888 the parsonage south of Manchester Road was sold and the home of Fred Schelp, which adjoined the church property, was purchased for a parsonage at a cost of \$2,300. (See Exhibit I.) All the church property was now north of Manchester Road. This building remained a parsonage until 1955 when the present parsonage was built. It then served as classrooms and an office until it was torn down in 1972. It was named Harvey House in memory of the Rev. B. B. Harvey who died while serving at Salem.

About 1915 a frame building (about 12' x 24') was built behind and connected to the church. It had a basement where the first furnace was installed. The room itself was heated by a wood burning stove. The furnace was first fueled by coal, followed by a stoker, oil, and then gas. Original steam radiators are still in use. This room is where the Official Board met, where the choir practiced, where the youth met, and where two Sunday School classes were held. The classes were separated by a blackboard.

Another service that the church provided the community was a large cistern that was located on the west side of the sanctuary. This could be used by families if their own cisterns became dry. It was also used to fill a tank that was mounted on a two-wheel cart which was pulled by hand and was used to fight fires. The cart was stored where the playground of the church is now located.



Salem continued to grow and prosper and attained a membership of 575 and a Sunday School of 350. In 1962 Salem assisted in the formation of the Ellisville Methodist Church. About 100 members transferred to start the new church so in a sense Salem became the “Mother Church” for Ellisville.



An educational wing was built in 1950. This provided a kitchen, social hall, restrooms, and several classrooms. Prior to this time if a large room was needed the Masonic Lodge across the street was used.



In 1955 a new parsonage was built. Rev. Delvis Roberts and his family were the first occupants.



In 1958 a new chancel and sanctuary expansion was completed. This also included a classroom and study for the pastor. Seating capacity for the sanctuary was increased to approximately 200.

In 1989 the last expansion was completed. This included Duff Hall, classrooms, a pastor's study, secretary's office, storage room, and kitchen. There are restrooms on both levels of this addition. Duff Hall was named in memory of Bill Duff who was chairman of the building committee. He died before the project was completed.



Services were held in German well into the 1900's but were halted during World War I because of anti-German sentiment. They were resumed on a once-a-month basis following the war, and the last service in German was held about 1930 by Rev. August Koewing. He was a retired German Methodist minister who was born in Germany December 7, 1850. He was living in Ballwin when he died March 20, 1936. He is buried at Leslie, Missouri, along with his wife, Dena, who died in 1946.

Salem was a member of the St. Louis German Conference which was in existence from 1879 until 1925 when it merged with the St. Louis Conference. Prior to 1879 they were members of the St. Louis District of the Illinois Conference.

The St. Louis German Conference consisted of 20 churches located in St. Louis and adjoining counties in Missouri. We have in our files the minutes of the first session of the German Methodist Episcopal Church held September 3 through 6, 1879, in St. Louis, Missouri. William Schwind was the pastor at Salem, and the records indicate that his salary was \$600 per year. The church had 85 full members and the church building had a valuation of \$5,000 and the parsonage was valued at \$500. (*See Exhibit J.*)

Robert Appel in his book, *Salem (Ladue) Congregations of the Faithful*, gave the following account of a tribute to the German ministries by Brother Herman Frauenfelder upon the merger of the conferences:

“In 1925 at a joint conference of the German and English St. Louis Conferences, after much thought and prayer, it was declared that the mission of German Methodism in the St. Louis District was finished, and it voted to merge the St. Louis German Conference into the St. Louis Conference. This action broke up a happy family of German preachers who are now all in the English work. It surely is not out of place here to mention the fact with what courage our German ministers studied and mastered the English language. The change surely but slowly had been at work since about 1910 and many preachers were forced to preach on Sundays once in the German language and once in the English language. So today the preaching is done not only in the English language altogether, but the German Conference is no more, as progress cannot be denied. God does not tune in on the German or the English language. He tunes in on Christian hearts. The influence of the German Methodists will be felt for a long time, their history is glorious, full of work performed for the Master. We have brought to our English Conference, brethren, a spirit that reaches into every Methodist Church in St. Louis.”

It was after this merger that Salem and Manchester found themselves in the same conference.

Salem-in-Ballwin was closely associated with what is now Salem-in-Ladue but which was previously located in St. Louis. Both were German Methodist churches. Salem-in-Ladue began services in 1841 and was considered the “Mother Church of all German Methodist Churches west of the Mississippi River.” They were also known as the “Cathedral of German Methodism.” Rev. Theodore Wolff was the last surviving minister of the German Conference. He died in 1999. He was an avid historian and his papers are located at Central Methodist College in Fayette, Missouri, under the title “Wolff Collection.”

In 1844 the Methodist church split and with the approaching Civil War most churches in the metropolitan area joined the Methodist Episcopal Church South. Both Salem churches remained loyal to the Union and to the Methodist Episcopal Church. The churches did not reunite until 1939. In 1968 the Methodist Church and the United Brethren Church united to become the United Methodist Church.

Salem is a connectional church. One thing this means is that our ministers are selected by the Bishop and his or her cabinet. We now have more input in the selection process, but the Bishop makes the final decision.

Salem has had 57 ministers from 1847 to 2008. The average stay has been three years. The longest was six years shared by Rev. Delvis Roberts and Rev. Christiane Batjer. The shortest has been one year which is shared by many.

Several of the ministers studied at Eden Seminary while they were at Salem. Some went on to pastor some of the largest churches in the state. Others became District Superintendents (formerly called Presiding Elders) or held high offices in the Methodist Church. One served as a chaplain in World War II. Another was a respected author and historian. Ten former ministers were listed in the first addition of *Who's Who in Methodism*.

There have been two families who entered the mission field from Salem. Herbert and Martha (Gertsch) Peterson served in Malaysia and Herbert and Minnie (Hauhart) Longenecker served in Africa. The Sunday School classes supported a native missionary in India for many years until his death.

When we look to the east and west of us we have the tendency to consider Salem a small church. However, there are 50 churches in the Gateway Central District of which we are a member and we rank 22nd in membership. Our membership as shown in the 2006 Conference Journal was 295.

Exhibits A – S

	<i>Page</i>
A Seal of Organization	11
B Statement on plat regarding John Ball's layout of Ballwin, February 9, 1837	12
C Original layout of Ballwin, February 9, 1837	13
D Indenture dated October 12, 1850, for sale of property from John Ball to GME Church.....	14-19
E Deed to land for GME Church parsonage dated October 9, 1848	20-23
F Deed dated July 22, 1869, for sale of old church to Board of Education	24-27
G General Warranty Deed dated January 9, 1882, from Sarah Ball to Salem Trustees	28-31
H St. Louis County Historic Building Inventory	32-34
I Deed to land and building from Fred Schelp for parsonage dated November 7, 1888	35
J 1879 Historical Minutes of St. Louis German District Conference	36-39
K Fall Festival Program	40
L Minutes of organization of Ladies Aid Society.....	41
M Minutes of organization of Women's Society of Christian Service.....	42-44
N Minutes of organization of Wesleyan Service Guild	45
O Minutes of organization of Methodist Men.....	46
P Early Minutes of Epworth League	47
Q 25 th Jubilee of German Methodist Church	48-53
R 1908 Plat Map of Ballwin	54
S Ballwin School District World War II Honor Roll	55

Exhibit A
Seal of Organization




Exhibit B Statement on plat regarding John Ball's layout of Ballwin, February 9, 1837

The town of Ballshow on the Jefferson Road 21 miles west of St. Louis and 2 miles west of the Manchester The town is laid out in Squares of 104 feet 6 inches by the same in depth, and the Street all running right angles. Main Street being 60 feet in width. the other 40 feet.
Februar 7th 1837 Josiah H. Davison Surv.

The above Town is named Ballwin it embraces within its limits about twenty three acres of land It is bounded on the South by the road leading from St. Louis to Jefferson city, on the west by land now owned by the undersigned and also on the north east & south by me the undersigned proprietor. The course of First or Main Street is North 76 1/2 W. the other streets running westwardly are parallel thereto, and the cross streets are at right angles therefrom. The streets as laid down in the above plat. And also Blocks numbered 15 & 16 are relinquished to the use of the inhabitants of the town of Ballwin. The first named Block as a site for the Erection of a meeting house for the Methodist Episcopal Congregation & schoolhouse and Block No. 16 for a burring ground for the use of the inhabitants of said town and for no other purpose.
Ballwin February 9th 1837 John Ball.

State of Missouri, County of St. Louis, s.s. Be it remembered that on this ninth day of February eighteen hundred and thirty seven before me the undersigned Clerk of the Circuit Court. within and for the County aforesaid, came to me John Ball, known to me to be the real person, whose name is subscribed to the foregoing instrument of writing as a party thereto, and acknowledged the same to be his act and deed hand and seal for the purpose therein mentioned.

 In Testimony whereof I have hereunto set my hand and affixed the seal of said Court. at office in the City of St. Louis the date above written. Ono Ruland Clerk.

State of Missouri, } s.s.
City of St. Louis. } I, the undersigned, Recorder of Deeds for said City and State, do hereby certify that the foregoing Plat and instrument of writing was filed for record in my office, on the 9th day of February A.D. 1837 and is truly recorded in Plat Book No. 1 Vol. 2 page 72.

Witness my hand and official seal on this 5th day of February 1813
Chas. B. Jay
Recorder.

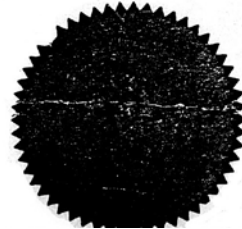


Exhibit C
Original layout of Ballwin, February 9, 1837



Filed February 9th 1837
Jno Ruland Recorder.

Exhibit D – Page 1
Indenture dated October 12, 1850,
For sale of property from John Ball to GME Church

CERTIFIED COPY.

No. 527 1900
~~180~~

Fee, \$.....

John Ball
et al.
to 1856

Sebastian Bopp
et al Trs
Germanian & Church
M. C. A.

RECORDED IN

Book: 171

Page: 333

OFFICE OF

RECORDER OF DEEDS,
ST. LOUIS, MO.

Exhibit D – Page 2
Indenture dated October 12, 1850,
For sale of property from John Ball to GME Church

Office of Recorder of Deeds



City of St. Louis, Mo.

Wm. H. Hahn,
Recorder

This Indenture, made & entered into this twelfth day of October A D one thousand eight hundred & fifty give by & between John Ball & Mary his wife of the town of Ballwin in the county of St. Louis & State of Missouri, parties of the first part & Sebastian Ropp, George Krapp, Henry Krapp, Frederick Schelp & Henry Haumann trustees for the use & purpose hereinafter contained all of the same county & State of the second part, witnesses the said parties of the first part for & in consideration of the sum of twenty dollars to them in hand paid by the said parties of the second part the receipt of which is hereby acknowledged have given granted bargained sold aliened conveyed & confirmed & by these presents, do give grant bargain sell alien convey & confirm unto the said parties of the second part trustees as aforesaid & to their heirs & assigns for ever as joint tenants & not as tenants in common the following described piece or lot of ground situated & being in the town of Ballwin aforesaid in the county of St. Louis & State of Missouri, to wit, Lot number forty (40) in block number eleven (11) bounded on the south by Second Street, on the West by Elm Street on the North by lot number forty nine (49) of the same block, & on the east by lot number thirty nine (39) of the same block said lot being one hundred and four feet six inches square, Do Have and to hold the said piece parcel or lot of ground & premises together with the rights privilege or ease

Exhibit D - Page 3
Indenture dated October 12, 1850,
For sale of property from John Ball to GME Church

ments, servitudes & what so ever in them & appendants
 or therewith usually had & enjoyed or in any wise be-
 longing unto the said parties of the second part & their
 heirs & assigns for ever as joint tenants & not tenants
 in common, in trust nevertheless & to the expres-
 use & intent that the parties of the second part &
 their heirs & assigns shall suffer to be erected and
 built & shall cooperate in erecting & building on
 the said lot a house or place of worship for the
 use of the members of the German Society of the
 Methodist Episcopal Church in the United States
 of America, according to the rule & discipline ^{which}
 from time to time may be agreed upon & adopted
 by the ministers & Preachers of said Church at their
 general conferences in the United States of America
 & in further trust & confidence that they shall at
 all times for ever hereafter permit each minister
 & Preacher belonging to said Church as shall from
 time to time be duly authorized by the general
 conferences of ministers & Preachers of the said
 Methodist Episcopal Church or by the annual
 conferences of said Church authorized by the
 said general conferences to preach & expound God's
 holy word therein, also the said parties of the
 second part shall defend the title thereto & shall
 make execute & deliver any & all assurances of
 & respecting the lot & premises aforesaid as they
 be directed & required to make & execute by the
 Stewards of the German Society of the Methodist
 Episcopal Church appointed for the circuit
 or station which shall include the said
 town of Ballwin, or a majority of the said
 Stewards duly chosen & qualified, they shall
 also allow and suffer the said Stewards
 duly chosen & qualified as aforesaid for
 the circuit or station (as the case may be)
 that shall include the said town of Ballwin

Exhibit D – Page 4
Indenture dated October 12, 1850,
For sale of property from John Ball to GME Church

to have receive & the said parties of the second part shall pay over & deliver to the said Stewards all the rents profits issues income & emoluments pecuniary or otherwise that may accrue arise grow or issue out of the lot & premises aforesaid or any building erections or improvements that may be made or put upon the same, Provided that if the said parties of the second part or any of them or the heirs of any of them have advanced any sum or sums of money on account of the said premises & they or their heirs executors or administrators be obliged to pay the said sum or sums of money they or a majority of them shall be authorized to raise the said sum or sums of money by pledging the said lot & premises by mortgage & if the said lot & premises shall be sold by virtue of said mortgage the said parties of the second part or their executors or heirs or administrators after paying the debt & liabilities for which the mortgage had been given & other expenses from the money arising from such sale, shall deposit the remainder of the money produced by the said sale with the Steward or Stewards of the German Society of the Methodist Episcopal Church of the Circuit or Station including said lot & premises which said surplus so deposited in the hands of the said Steward or Stewards shall be at the disposal of the next annual conference authorized as aforesaid which said annual conference shall dispose of the money according to the best of their judgment for the use of the said society attending Divine services on the lots & premises aforesaid, And the said parties of the

Exhibit D – Page 5
Indenture dated October 12, 1850,
For sale of property from John Ball to GME Church

give part hereby covenant to & with the said parties of the second part to warrant & defend the title to the premises unto them the said parties of the second part & their heirs & assigns forever against the lawful claim or claims of all & every person whomsoever, In & witness whereof the said parties here to of the first & second parts have hereunto set their hands and seals the day & year first above written,

- John ^{like} Ball, (seal)
- Mary ^{wife} Ball (seal)
- Heinrich Korumann (seal)
- Friedrich Schelp, (seal)
- Heinrich Knob, (seal)
- George Gfroech (seal)
- Christopher Loyz (seal)

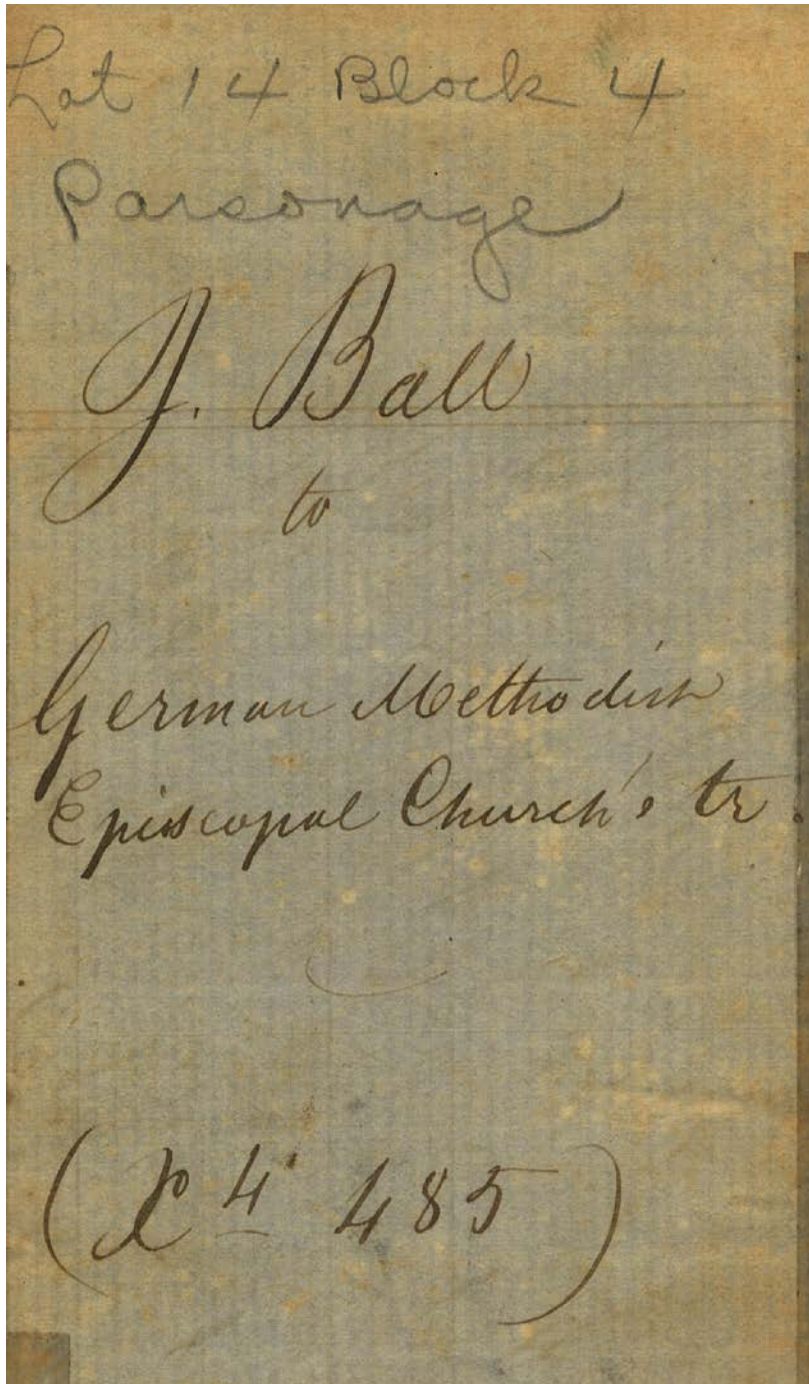
State of Missouri, Be it remembered that County of St. Louis, on this twelfth day of October eighteen hundred & fifty five, before me the undersigned Justice of the Peace within & for said County personally came John Ball & Mary his wife, both of the County of St. Louis & State of Missouri who are personally known to me to be the same persons whose names are subscribed to the foregoing instrument of writing as parties thereto & they severally acknowledged the same to be their act and deed for the purposes therein mentioned and the said Mary Ball being by me first made acquainted with the contents of the said deed & upon examination separate & apart from her husband acknowledged that she executed the said deed & relinquished her dower in the real estate therein mentioned freely & without

Exhibit D – Page 6
Indenture dated October 12, 1850,
For sale of property from John Ball to GME Church

~~an inspection & under influence of her said~~
husband, taken & certified the duty as
last above written, Enoch Berry,
Justice of the Peace
Filed & Recorded March 25-1856, C. Keule, Recorder

State of Missouri, I the undersigned Re-
corder of Deeds for said
City and State, do hereby certify the fore-
going to be a true copy of an instrument
of Writing executed by John Ball and
Mary, his wife to Sebastian Ropp
et al Trustees German Methodist Epis-
copal Church, United States of America
together with the acknowledgment
date of filing and recording thereof
as the same remains of record in
my office in Book 171 Page 333,
witness my hand and
official seal this 4th
day of May A D 1900.
J. H. Ash
Recorder.

Exhibit E – Page 1
Deed to land for GME Church parsonage dated October 9, 1848

A photograph of a handwritten deed document on aged, yellowish paper. The text is written in cursive ink. At the top, it reads 'Lot 14 Block 4' followed by 'Parsonage'. Below that, the name 'J. Ball' is written in a large, elegant script, followed by the word 'to' in a smaller hand. The recipient is identified as 'German Methodist Episcopal Church's tr.'. At the bottom, the number '(24 485)' is enclosed in large parentheses. The paper shows signs of age, including some staining and a vertical crease on the right side.

Lot 14 Block 4
Parsonage
J. Ball
to
German Methodist
Episcopal Church's tr.
(24 485)

Exhibit E – Page 2**Deed to land for GME Church parsonage dated October 9, 1848**

This Indenture made this ninth day of October in the year of our Lord one thousand eight hundred and forty eight, between John Ball and Mary Ball his wife, of Ballwin in St. Louis County in the state of Missouri, of the one part, and August Welley, Philip Boedeker, Christian Schmidt, Charles Zentig and Anthony Boedeker, in trust for the uses and purposes hereinafter mentioned, all of the town of Ballwin in St. Louis County and State of Missouri, of the other part witnesseth: that the said John Ball and Mary Ball his wife for and in consideration of the sum of ten dollars, to them in hand paid at and upon the sealing and delivery of these presents, the receipt whereof is hereby acknowledged, have given, granted, bargained, sold, released, confirmed and conveyed, and by these presents do give, grant, bargain, sell, release, confirm and convey unto them the said August Welley, Philip Boedeker, Christian Schmidt, Charles Zentig and Anthony Boedeker and their Successors (Trustees, in trust for the uses and purposes herein after mentioned) all the estate, right, title interest property claim and demand what soever either in law or equity which they the said John Ball and Mary Ball his wife have in to or upon all and singular a certain lot or piece of land situate lying and being in the town of Ballwin County and State aforesaid, described as being one hundred and four feet front on Main Street, and one hundred and four feet deep on Elm Street, bounded south by Main Street, and East by Elm Street, being lot number fourteen in block number four, together with all and singular the houses, woods, waters, ways, privileges and appurtenances thereto belonging or in any wise pertaining. To have and to hold all and singular the above mentioned and described lot or piece

Exhibit E – Page 3**Deed to land for GME Church parsonage dated October 9, 1848**

of land, Situate lying and being as aforesaid, together with all and
 singular the houses, woods waters, ways and privileges thereto
 belonging or in any wise pertaining unto them the said August
 Wolley, Philip Boedeker, Christian Schmidt, Charles Zentig
 and Antony Boedeker of the town County and State aforesaid
 and their successors in office for ever: in Trust that they shall
 erect and build, or cause to be erected and built thereon a ho-
 use or parsonage for the use and occupancy of the German ministers
 and preachers of the Methodist Episcopal Church, in the
 United States of America, and in further trust and confidence
 that they shall at all times for ever hereafter permit such German
 Ministers and preachers belonging to the said Church as shall
 from time to time be duly authorized by the General Conferences,
 of the ministers & preachers of the said Methodist Episcopal
 Church, or by the annual conferences authorized by the said general
 Conference to move in and occupy the aforesaid house or parsonage
 And the said John Ball and Mary Ball his wife do by
 these presents warrant and for ever defend all and singular the
 before mentioned and described lot or piece of land with the
 appurtenances thereto belonging unto them the said August Wolley
 Philip Boedeker, Christian Schmidt, Charles Zentig and
 Antony Boedeker, and their successors from the claim or claims
 of them the said John Ball and Mary Ball his wife their
 heirs and assigns and from the claim or claims of all persons
 whatsoever. In Testimony whereof the said John Ball
 and Mary Ball have hereto set their hands and seals the
 day and year aforesaid.

John ^{his} Ball (seal)
 Mary ^{mark} ^{her} Ball (seal)

Exhibit E – Page 4**Deed to land for GME Church parsonage dated October 9, 1848**

Signed sealed and delivered in presence of Enoch Berry.
 Be it remembered that on the seven tenth day of November
 in the year of our Lord one thousand eight hundred and forty
 eight, personally appeared before me, one of the Justices of the
 Peace in and for the County of St. Louis and State of Missouri,
 the within named John Ball and Mary Ball his wife the
 grantors, acknowledged the within Deed of trust to be their act
 and deed for the uses and purposes therein mentioned and
 declared, and she the said Mary Ball wife of the said John
 Ball being separate and apart from from her said husband
 by me examined, declared that she had made the same acknow-
 ledgment freely and with her own consent, without being induced
 thereto through fear or threats of her said husband. In Testimony
 whereof I have hereto set my hand and seal the day & year
 last above written. Enoch Berry Justice of the Peace. (S)

Filed and Recorded January 3^d 1849.

State of Wisconsin, I the undersigned Recorder for said County, certify
 County of St. Louis, the foregoing to be a true and complete copy
 of an instrument of writing from J. Ball to the German Metho-
 dist Episcopal Church's trustees and also of the Certificate of
 acknowledgment and of the date of filing and recording thereof
 as fully as the same remains of record in my office in Book
 N. 4 P. 485.

Witness my hand & official seal this
 26th March 1859

C. Keene Recorder
 p. J. Conrad Secy.




Exhibit F – Page 1
Deed dated July 22, 1869, for sale of old church to Board of Education

CERTIFIED COPY.

No. *519* *1869*
~~189~~

Fee, \$

German Society of the
Methodist Episcopal Church
by Trustees to
Township Board
of Education.

RECORDED 

Book *400*

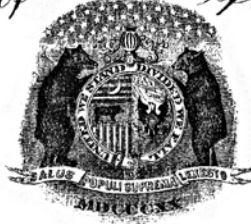
Page *55*

OFFICE OF
RECORDER OF DEEDS,
ST. LOUIS, MO.

Exhibit F – Page 2

Deed dated July 22, 1869, for sale of old church to Board of Education

Office of Recorder of Deeds.



City of St. Louis, Mo.

Wm. H. Hahn,
Recorder.

W. S. Stampf et al
 L. B. et al
 8-14-1869

This Deed made and entered into this twenty-second day of July A. D. eighteen hundred and sixty-nine by and between Sebastian Bopp, Frederick Schelp, Mathew Zimmermann, John Blank and Louis Daenges Trustees of the German Society of the Methodist Episcopal Church in Ballwin St. Louis County Missouri of St. Louis County State of Missouri parties of the first part and the Township Board of Education of township No. forty five range four east of the County and State aforesaid parties of the second part Witnesseth that the said parties of the first part in consideration of the sum of Eight hundred dollars to them paid by the said parties of the second part the receipt of which is hereby acknowledged have granted, bargained and sold and by these presents do Grant, Bargain Sell Convey and Confirm unto the said parties of the second part and their successors in office in trust for the use and benefit of a public School in District No five township forty five Range four East, St. Louis County Missouri the following described piece or lot situated and being in the town of Ballwin County of St. Louis State of Missouri to wit; Lot No forty (40) in Block No eleven (11) bounded on the south by Second Street in the west by Elm Street on the north by lot number forty nine (49) of the same block and on the east by lot No thirty nine (39) of the same block said lot being one hundred and four feet six inches square; but the said parties of the first part preserve the right to use the Church erected on said lot as they usually did before for divine service for the term of one year commencing on the first day of

Exhibit F – Page 3

Deed dated July 22, 1869, for sale of old church to Board of Education

September eighteen hundred and sixty nine next ensuing.
 To Have and To Hold the same with all the rights privileges and appurtenances therunto belonging or in anywise appertaining unto the said parties of the second part their successors in office and assigns forever; the said Sebastian Bopp, Frederick Schelp, Mathew Zimmermann, John Blank and Louis Daenges trustees of the German Society of the M. E. Episcopal church parties of the first part hereby covenanting that they their successors in office will Warrant and Defend the title to the said premises and every part thereof to the said parties of the second part their successors and assigns against the lawful claim or claims of all and every person or persons whomsoever claiming or to claim the same or any part thereof. In Witness Whereof the said parties of the first part have hereunto set their hands and seals the day and year first above written.
 Sebastian Bopp (Seal) Frederick Schelp (Seal)
 John Blank (Seal) Mathew Zimmermann (Seal)
 Ludwig Daenges (Seal)

State of Missouri } ss
 County of St. Louis } Be it Remembered that on this fourteenth day of August A. D. eighteen hundred and sixty nine before me the undersigned Justice of the Peace within and for the county and State aforesaid came Sebastian Bopp, Frederick Schelp, Mathew Zimmermann, John Blank and Louis Daenges trustee of the German Society of the M. E. Church at Ballwin who are personally known to me to be the same persons whose names are subscribed to the foregoing instrument of writing as parties thereto and they acknowledged the same to be their free act and deed as trustees of the said M. E. Church for the purposes therein mentioned. In Testimony Whereof I have hereunto set my hand the day and year last above written.

Louis Stroth Kamp Justice of the Peace.
 Filed & Recorded Jan'y 8. 1870. Julius Conrad Runder

Exhibit F – Page 4**Deed dated July 22, 1869, for sale of old church to Board of Education**

State of Missouri } s. s.
 City of St. Louis } I, the undersigned Recorder of Deeds
 for said City and State do hereby
 certify the foregoing to be a true copy of an instrument of
 writing executed by the German Society of the Methodist
 Episcopal Church by Trustees to Township
 Board of Education together with the acknowledgment
 and date of filing and recording thereof as the same remains
 of record in my office in book 400 page 55.

Witness my hand and official seal
 this 3rd day of May A.D. 1900.
 Wm. H. Ashm
 Recorder.

36

Exhibit G – Page 1
General Warranty Deed dated January 9, 1882, from Sarah Ball to Salem Trustees

117

Hannibal Printing Company, Hannibal, Mo.

General Warranty Deed.

FROM
Sarah Ball

TO
19 - 255
The Trustees of the *M. E. P.*
Church at Ballwin, Mo.

FILED FOR RECORD
December 27th A. D. 1882
at *1* o'clock *23* minutes *P.* M.
S. R. R. R.
By J. D. Schmidt Recorder.

STANDARD FORM.
This Deed conforms precisely to the form of printed Warranty Deed Records manufactured by the Hannibal Printing Company, Hannibal, Mo., and now in use in most of the counties of Missouri.

Recorder's Fee, - - - *1.00* \$ *1.00*

This Deed should be promptly recorded, as a failure to record may seriously impair the title to the property.

STATE OF MISSOURI, }
County of *St. Louis* } ss.

IN THE RECORDER'S OFFICE.

I, *the undersigned* Recorder of said County, do hereby certify that the within instrument of writing, with the Certificate thereon was, on the *27th* day of *December* A. D. 1882, at *1* o'clock and *23* minutes *P.* M., duly filed for record in this office, and is recorded in the records of this office, in Book *19* at page *255.*

IN WITNESS WHEREOF, I have hereunto set my hand and affixed my official seal *at office* at *Clayton*, this *27th* day of *December* A. D. 1882.

S. R. R. R.
RECORDER.

By J. D. Schmidt

Exhibit G – Page 2

General Warranty Deed dated January 9, 1882, from Sarah Ball to Salem Trustees

No. 102.

Printed and for sale by Hannibal Printing Company, Hannibal, Mo.

Class 5.

GENERAL WARRANTY DEED.

This Indenture, Made on the seventh day of January

A. D. One Thousand Eight Hundred and Eighty two, by and between

Sarah Ball widow of Joshua H. Ball, deceased, of the County of St. Louis, and State of Missouri; part of the First Part, and Frederick Schell, Sebastian Papp, Henry Papp, Francis Schleiter, and Herman Heubardt, trustees of the N. E. Salem Church at Ballwin, of the County of St. Louis in the State of Missouri, part of the Second Part:

WITNESSETH, That the said party of the First Part, in consideration of the sum of

Two hundred and twenty five 100 DOLLARS, to her paid by the said party of the Second Part, the receipt of which is hereby acknowledged, doth by these

Presents, Grant, Bargain and Convey and Confirm, unto the said party of the Second Part and their successors in Office, in trust for the use and benefit of said N. E. Salem church, heirs and assigns, the following described Lots, Tracts or Parcels of Land, lying, being and situate in the County of St. Louis, and State of Missouri, to wit: All

commencing at the North West corner of Christian Holthorn's lot, thence running East two hundred and twelve feet and six inches (212.6') to the North East corner of Joshua Ball's lot, thence North sixteen (16) rods to the North West corner of John Darenbach's land, (now F. Schell's land) thence West two hundred and twelve feet and six inches (212.6') parallel with the line of said lot, thence South sixteen (16) rods to the place of beginning: in trust, that said premises shall be held, kept and maintained as a place of residence for the use and occupancy of the Trustees of the Methodist Episcopal Church in the United States of America, who may, from time to time, be stationed in said place; subject to the usage and Discipline of said Church, as from time to time authorized and declared by the General Conference of said Church, and the Annual Conference within whose bounds said premises are situate, and for any other use, as said Trustees and their successors, may think proper and necessary for the use and benefit of said Church.

Exhibit G – Page 3 General Warranty Deed dated January 9, 1882, from Sarah Ball to Salem Trustees

TO HAVE AND TO HOLD the premises aforesaid, with all and singular the rights, privileges, appurtenances and immunities thereto belonging or in anywise appertaining unto the said party of the Second Part, and unto ~~their heirs~~ ^{successors} and assigns, Forever; the said Sarah Ball hereby covenanting that she is lawfully seized of an indefeasible Estate in fee in the premises herein conveyed; that she has good right to convey the same; that the said premises are free and clear of any encumbrances done or suffered by her or those under whom she claims, and that she will WARRANT AND DEFEND the title to the said premises unto the said party of the Second Part, and unto ~~their heirs~~ ^{successors} and assigns Forever, against the lawful claims and demands of all persons whomsoever.

IN WITNESS WHEREOF, The said party of the First Part has hereunto set her hand and seal the day and year first above written.

~~Signed, Sealed and Delivered in presence of us~~

Sarah Ball

SEAL.
SEAL.
SEAL.
SEAL.
SEAL.
SEAL.

Exhibit G – Page 4

General Warranty Deed dated January 9, 1882, from Sarah Ball to Salem Trustees

~~STATE OF MISSOURI,~~
 County of ~~.....~~ } ss. ~~BE IT REMEMBERED,~~ That on this ~~.....~~ day of ~~.....~~
 A. D. 188....., before the undersigned, a ~~.....~~
 within and for the County of ~~.....~~ and State of Missouri, personally came ~~.....~~
 who are personally known to me to be the same persons whose names are subscribed to the foregoing instrument of writing as parties thereto, and acknowledged the same to be their act and deed for the purposes therein mentioned. And the said ~~.....~~
 being by me first made acquainted with the contents of said instrument, upon an examination separate and apart from ~~.....~~ husband....., acknowledged that ~~.....~~ executed the same, and relinquishes ~~.....~~ dower in the Real Estate therein mentioned, freely and without fear, compulsion or undue influence of ~~.....~~ said husband.....
 In Testimony Whereof, I have hereto set my hand and affixed my official seal, at my office in ~~.....~~ the day and year first above written.
 My term of office as a Notary Public will expire ~~.....~~ 18.....

STATE OF MISSOURI,
 County of *H. Lewis* } ss. ~~BE IT REMEMBERED,~~ That on this *9th* day of *January*
 A. D. 1882, before the undersigned, a *Justice of the Peace*
 within and for the County of *H. Lewis* aforesaid, personally came *Sarah Ball, widow of*
Nashua L. Ball, deceased, who is personally known to me to be the same person whose name is subscribed to the foregoing instrument of writing, as a party thereto, and acknowledged the same to be *her* act and deed for the purposes therein mentioned. And the said ~~.....~~ further declared ~~.....~~
 to be single and unmarried.
 In Testimony Whereof, I have hereto set my hand ~~and affixed my official seal,~~ at my office in *Ballwin* the day and year first above written.
 My term of office as a Notary Public will expire ~~.....~~
Lewis Strathkamp,
Justice of the Peace

Exhibit H – Page 1 St. Louis County Historic Building Inventory

Office of Historic Preservation, P.O. BOX 170, JEFFERSON CITY, MISSOURI
HISTORIC INVENTORY

No. <u>22R110247</u> County <u>St. Louis</u> Location of Negatives <u>0270-34</u>	4 Present Name(s) <u>Salem United Methodist Church of Ballwin</u> 5. Other Name(s) <u>14825 Manchester Road</u> <u>311 Manchester Road</u>	1 No	
Specific Location <u>3.78 acres in Survey 1908; Lot 62 and parts of Lots 59, 60 & 61, Block 14 and lots 63, 64 & parts of (continued)</u> City or Town <u>Ballwin</u> II Rural, Township & Vicinity Site Plan with North Arrow	16. Thematic Category 17 Date(s) or Period <u>1870</u> 18. Style or Design <u>Romanesque Revival</u> 19. Architect or Engineer 20. Contractor or Builder 21. Original Use, if apparent <u>church</u> 22 Present Use <u>church</u> 23 Ownership Public <input type="checkbox"/> Private <input checked="" type="checkbox"/> 24. Owner's Name & Address, if known <u>Salem Church of Ballwin</u> <u>311 Manchester Road</u> <u>Ballwin MO 63011</u> 25. Open to Public? Yes <input type="checkbox"/> No <input checked="" type="checkbox"/> 26. Local Contact Person or Organization 27. Other Surveys in Which Included <u>100 Historic Buildings (1970) p.31</u> <u>Historic Sites Inventory (1965), no. 685</u> <u>Missouri Historic Sites Catalog (1963) p. 161</u>	28. No. of Stories <u>1</u> 29. Basement? Yes <input checked="" type="checkbox"/> No <input type="checkbox"/> <u>under addition</u> 30. Foundation Material <u>stone footing</u> 31. Wall Construction <u>brick</u> 32. Roof Type & Material <u>high gable/composition</u> 33. No. of Bays Front <u>3</u> Side <u>4</u> 34. Wall Treatment <u>common bond</u> 35. Plan Shape <u>rectangle</u> 36. Changes (Explain in #42) Addition <input checked="" type="checkbox"/> Altered <input type="checkbox"/> Moved <input type="checkbox"/> 37. Condition Interior <u>excellent</u> Exterior <u>excellent</u> 38. Preservation Underway? Yes <input type="checkbox"/> No <input checked="" type="checkbox"/> 39. Encangered? By What? Yes <input type="checkbox"/> No <input checked="" type="checkbox"/> 40. Visible from Public Road? Yes <input checked="" type="checkbox"/> No <input type="checkbox"/> 41. Distance from and Frontage on Road	2. County <u>St. Louis</u> 4 Present Name(s) <u>Salem United Methodist Church of Ballwin</u> 311 Manchester Road
3 Coordinates UTM Lat _____ Long _____ Site <input type="checkbox"/> Structure <input type="checkbox"/> Building <input checked="" type="checkbox"/> Object <input type="checkbox"/> 11. In National Register? Yes <input type="checkbox"/> No <input checked="" type="checkbox"/> 12. Is It Eligible? Yes <input type="checkbox"/> No <input type="checkbox"/> 13 Part of Estab Hist Dist.? Yes <input type="checkbox"/> No <input checked="" type="checkbox"/> 14. District Potent? Yes <input type="checkbox"/> No <input type="checkbox"/> 15 Name of Established District	42. Further Description of Important Features The date of construction of the church is given in a stone panel set into the front wall above the center bay. An inscription cut into it reads: "Methodist.1870. Episcopal Church." The steeple and spire appear to retain their original form but the steeple has 4' x 8' wood panels covering it. The spire is octagonal and rests on a 4-sided, pyramidal base. The bell is rung by hand. Both the roof of the church and the spire are covered with <u>composition shingles, large and diamond-shaped</u> (continued) 43 History and Significance Ballwin was platted by John Ball in 1837, who then set aside a full block for the Methodist Episcopal Church and a school house, and an adjoining tract for a cemetery. Ball came to this area in the late 1790's and became converted to Methodism in 1809. Ball became a "class leader" of the first backwoodsmen and settlers, holding classes in his cabin between the times when a circuit-riding preacher would come. By 1827, Ball (continued) 44 Description of Environment and Outbuildings A parking lot is on the west side of the property. The church faces Manchester Road, a busy commercial thoroughfare in a rapidly developing area, although a few older structures survive.		Photo
Sources of Information <u>Along the Trail, Vol.1 (January, 1969) unpagged.</u> <u>Wallace, Beverly Scott, A History of Ballwin, Ballwin 1979.</u> <u>Shankland, Warren M., Ballwin in the Beginning, (n.p., 1960) p. 17.</u>	46. Prepared by <u>Lindenbusch/Little</u> 47. Organization <u>St. Louis County Parks</u> 48. Date <u>1/92</u> 49. Revision Date(s)		

(continued)

Exhibit H – Page 2
St. Louis County Historic Building Inventory

1 of 2

Salem United Methodist Church of Ballwin
311 Manchester Road

6. continued

57 and 58, Block 15, Ballwin subdivision.

42. continued

Windows on the upper level of the facade, opening into the choir loft, have semicircular heads and the lights have been cut to that shape. The openings on the main floor have segmentally-arched heads, as does the door. All of the material used to fill the doorway is of recent vintage: a double door with diamond-shaped lights and a skylight of Florentine glass.

The brick arches over the upper windows project beyond the surface of the wall and run between brick quoins at each corner and brick pilasters which divide the facade into three distinct bays.

Brick quoins also appear at the rear of the structure. With three brick pilasters, they define the four bays on each side of the church. The uppermost bricks of each quoin and pilaster are corbeled to simulate a capital. Each bay contains a window with a semicircular head, 9-over-9 lights, and five-light heads. All of the glass is clear.

Another opening may have originally existed on the facade since there is a circle created by bricks within the gable. The center of that circle is now filled with brick that is of a slightly different color than the remainder of the wall. The original wall no longer exists. It was removed during the mid-1960's when the sanctuary was enlarged. A frame addition was erected then as part of a major expansion which also included the construction of the present brick office and nursery wing at the rear of the sanctuary. That marked the second building program undertaken by the congregation during the past thirty years, the first having in the 1950's produced a brick recreation hall to the northeast of the church. The work done in the 1960's caused the recreation hall to be joined to the rest of the complex. Until then, it was a free-standing building. Some additions have shed roofs. The frame extension from the sanctuary is covered with clapboards. A large new addition beneath a gable roof has been built to the west, attached to the northwest corner.

Anchor plates for reinforcing rods are visible in several places on the exterior of the old section of the church. Those include the corners at the front of the structure and the spaces immediately above the three northerly windows on each side.

The interior shows signs of extensive remodeling but also a variety of original features. The choir loft above the lobby at the south side of the sanctuary has a balustrade with turned balusters. Panels suspended from tracks in the ceiling can be used to close off the loft.

Exhibit H – Page 3
St. Louis County Historic Building Inventory

2 of 2

Salem United Methodist Church of Ballwin
311 Manchester Road

42. continued

There are now fourteen pews on each side of the center aisle. The twelve that are closest to the altar are lighter in color and they are well-crafted reproductions of the earlier carpentry on the sixteen remaining pews. The reproductions were created when the sanctuary underwent enlargement in the 1960's. The work done then created the whole of the space now used for the altar and pulpit. Windows with designs in vitrified colors are set into the wall behind the altar.

The original location of the rear wall of the sanctuary is still made apparent by a line created at the point where the old plaster joins the new.

There is no basement under the original building and its walls rest on a stone footing or water table. The combination nursery and office addition does have a basement from which there is access to a crawl-space beneath the older section of the church.

43. continued

was providing space for services in his carding mill in Manchester. The founding of the congregation came in 1847. In 1855 a small white frame building (some say a log cabin) was erected for a church. The burial ground was marked out at this time. The present brick building was constructed in 1870 for \$4,500, and has been in continuous use since then. The main sanctuary exterior remains in its original form, although the interior has been remodeled more than once. An educational wing was added in 1951 and, in about 1958, the sanctuary was enlarged with the addition of a new altar and choir area and several new pews. Shutters to fit the round-headed windows are shown in some early photos, but only hinges remain.

45. continued

Interview with Oliver Blinnes, June 1981.

On site inspection.

Exhibit I

Deed to land and building from Fred Schelp for parsonage dated November 7, 1888

Book 41, page 12

1888 Nov 12

1896
 General Warranty Deed. This Indenture, Made on the 7 day of November A.D. One Thousand Eight Hundred and eighty eight by and between Fred Schelp Sr. of St. Louis County party of the First Part, and Sebastian Bopp Sr., Herman Kauhard, Henry Bopp, Casper Weuther, Fred Schelp Sr. Trustees of the Gen. Meth. Epis. Church of the County of St. Louis, in the State of Missouri, parties of the Second Part. Witnesseth That the said party of the First Part in consideration of the sum of Two thousand Three hundred Ten Dollars to him paid by the said Trustees parties of the Second Part, the receipt of which is hereby acknowledged, does by these presents Grant, Bargain and Sell, Convey and Confirm, unto the said party of the Second Part, their successors and assigns, the following described Lots, Tracts or Pieces of Land, lying, being and situated in the County of St. Lou. & State of Missouri to wit: A certain piece of land adjoining to the town of Ballwin on the North, and described as follows. Commencing at the north corner between lot number sixty one and sixty two, in Block (14) fourteen of the town of Ballwin, running thence east with the said northern line of the town of Ballwin Six hundred and twenty three feet (223) thence north east ten Rods, thence west four hundred and twenty three feet (223), thence south sixteen Rods, to the place of beginning, in Survey nineteen hundred & eight, Township, Twp. five North Range four East, S. Four, that said premises shall be held, kept and maintained as a place of residence for the use and occupancy of the members of the Methodist Episcopal Church in the United States of America who may from time to time be stationed in said place subject to the usage and discipline of said Church, as from time to time authorized and declared by the General Conference of said Church and by the annual Conference within whose bounds the said premises are situated. Except a strip of land which is reserved by E. L. Greenbush for Road or Alley purposes. Said strip of land is situated on the north west corner of said above described land, and is fifteen feet wide, and one hundred and twenty four feet and six inches long and runs along the north boundary line of lot sixty two Block fourteen and Mathew Street said Town of Ballwin. He Have and To Hold the premises aforesaid, with all and singular the rights, privileges, appurtenances, immunities and improvements thereto belonging or in any wise appertaining unto the said Trustees parties of the Second Part, and unto their successors and assigns Forever, the said Fred Schelp Sr. hereby covenanting that he will Warrant and Defend the title to the said premises unto the said Trustees parties of the Second Part and unto their successors and assigns Forever, against the lawful claims and demands of all persons whomsoever in witness whereof, the said party of the First Part has hereunto set his hand and seal the day and year first above written.

Fred Schelp Sr. (initials)

State of Missouri } On this 7th day of November 1888, before me personally appeared Fred Schelp Sr. (as original) to me
 County of St. Louis } known to be the person described in and who executed the foregoing instrument and acknowledged that he
 executed the same as his free act and deed. And the said Fred Schelp Sr. further declared himself to be single and un-
 married. In testimony whereof I have hereunto set my hand at my office in St. Louis County, the day and year
 first above written.

Filed for record November 12 1888 at 11:22 A.M. Test. & Record by E. Schmidt Dy. } Clerk & Notary Public of the State.

Exhibit J – Page 1
1879 Historical Minutes of St. Louis German District Conference

Deutscher Kalender

für das Jahr

1880.

Nebst den

Verhandlungen und Berichten

der

ersten jährlichen Sitzung

der

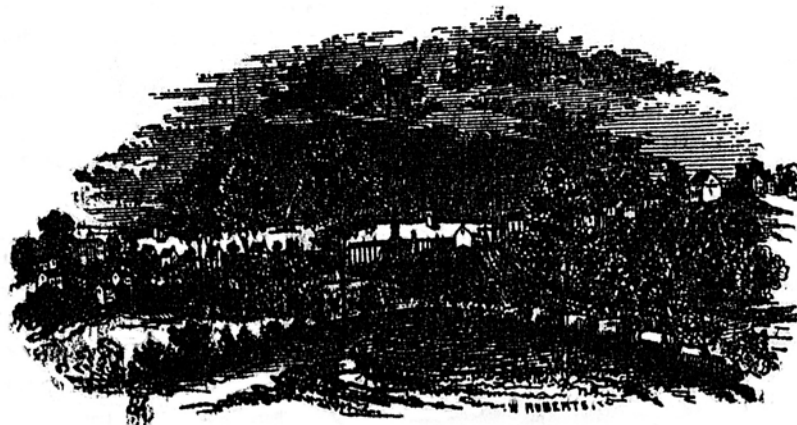
St. Louis deutschen Konferenz

der

Bischöflichen Methodisten-Kirche,

gehalten in

St. Louis, Mo., vom 3. bis 6. September 1879.



Cincinnati:
Gedruckt bei Hitchcock und Walden.

Exhibit J – Page 2
1879 Historical Minutes of St. Louis German District Conference

Verhandlungen und Berichte
 der
ersten jährlichen Sitzung
 der
St. Louis deutschen Konferenz
 der
Bischöflichen Methodisten-Kirche,
 gehalten in
St. Louis, Mo., vom 3. bis 6. September 1879.

—————
 Namensliste der Konferenz-Mitglieder.

Balcke, H.
 Balcke, W.
 Barth, Ph.
 Barth, J. L. J.
 Baumgarten, J.
 Becker, J. A.
 Böhrenz, G.
 Bonn, C.
 Bonn, G.
 Brinkmeyer, H.
 Bühner, G.
 Dewelt, M.
 Diener, H.
 Ehler, C. H.
 Ellerbeck, H.
 Enzeroth, G.
 Faust, J. P.
 Felsel, J.
 Flegenbaum, F.
 Flegenbaum, M.
 Fotsch, M.

Franz, J.
 Grünewald, Fr.
 Harmel, L.
 Havighorst, R.
 Hehner, Ph.
 Hehner, P.
 Heidel, Ch.
 Hilmes, J. H.
 Holtkamp, C. H.
 Hüne, D.
 Irmscher, E. R.
 Kleinschmidt, W.
 Köneke, H. F.
 Köneke, W.
 Koch, H.
 Kröb, L.
 Kuhl, Ph.
 Kessler, J. L.
 Kniepeltz, H.
 Ketz, J.
 Lehmann, H.

Uherob, Fr.
 Magaret, E. C.
 Miller, J. P.
 Mardorf, C.
 Miller, H. F.
 Naumann, Ph.
 Naumann, H.
 Pfaff, H.
 Pelsch, C.
 Rintel, J.
 Roos, H.
 Rodenberg, Ch.
 Reth, G. W.
 Röbet, M.
 Segesser, C.
 Schlägenhauf, J.
 Schlinger, C.
 Schlichte, M.
 Schüb, H.
 Schüb, W.
 Schülz, W.

Simon, E. W.
 Schönl, W.
 Steilmeyer, C.
 Sandmeyer, J. J.
 Stoffregen, Fr.
 Stär, Ph.

Thalenhorst, C.
 Thomas, H.
 Tillmann, R.
 Tilmken, G.
 Voshoff, H.
 Wehrmann C.

Wanner, J.
 Wilhelm, J. P.
 Wilkening, W.
 Winter, W.
 Young, J. J.
 Ziegler, H.

Exhibit J – Page 3

1879 Historical Minutes of St. Louis German District Conference

St. Louis Distrikt: J. M. Dewein, Vorstehender Aeltester.
 St. Louis, Wash StraÙe, H. Schüy.
 " Benton StraÙe, H. Lahrman.
 " Achte Str., }
 " Sophia Str., } F. Stoffregen.
 " Rock Spring, } -
 St. Charles, H. Balcke.
 Warrenton, C. Heidel.
 Warren, H. Psaff.
 Hopwell, C. Wehrmann,
 New Melle und Marthasville, J. J. Sandmeyer.
 DeSoto, W. Kleinschmidt.
 Farmington, H. Schlüter.
 Ballwin, W. Schwind.
 Union und New Haven, J. P. Faust.
 Montgomery, H. Bosholl.
 Herman, C. Steinmeyer.
 Drake, F. Rod.
 Thirb Creel, C. Mardorf.
 Jefferson City, zu besetzen.
 Mortson, M. Nießmann.
 Jamestown, J. Franz.
 H. Koch, Präsident; J. L. Reßler, Professor im Central Wesleyan
 College, Glieder der Warrenton Vierteljahrs-Conferenz.
 C. Heidel, Superintendent des Central Wesleyan Waisenhauses.

Exhibit J - Page 4

1879 Historical Minutes of St. Louis German District Conference

Statistik

Statistik

Bezirke und Stationen.	Anzahl.				Kaufm.		Kirchen-Eigentum.					Conf.-Ansprüche...	
	Probeglieder.	Wohlfleber.	Lebendige...	Kinder.....	Erwachsene...	Kirchen.....	Wahrscheinlicher Werth.	Prob.-Wohn.	Wahrscheinlicher Werth.	Neubau u. Verb. v. Kirchen u. Prob.-Wohn.	Lehrlinge Schulden....	Conf.-Ansprüche....	
St. Louis District.	35	315	2	21	1	\$55000	1	\$5000	\$3000	\$60 00	
St. Louis, West St. Louis.	8	185	3	12	1	3000	1	1800	1170	20 00	
" North	5	107	2	20	1	5000	1	1000	150	5 15	
" South	6	21	1	5	1	3000	1	1000	1300	5 00	
St. Charles	4	61	3	7	1	7000	1	800	250	18 00	
Warrenton	12	139	4	8	3	5500	1	1000	250	13 00	
Boonville	25	262	4	23	2	1700	1	300	27 00	12 85	
De Soto	2	52	1	5	2	2000	1	700	450	7 00	
New West and Marshville	11	58	1	7	1	800	1	200	51 00	11 75	
Birmingham	1	67	1	4	2	800	1	500	16 00	
Ballwin	4	85	3	10	1	5000	1	600	90	8 00	
Union and New Castle	9	170	2	10	3	4000	1	35 00	400 00	4 80	
Mountgentry	7	41	3	6	2	1500	1	400 00	100	11 05	
German	23	140	1	31	1	3200	1	1000	20 00	
Draft	15	100	2	6	2	1400	1	300	9 00	
Elm Grove	23	139	1	19	2	700	1	300	5 00	
Stefferson City	3	28	6	2	1600	
Stefferson	14	75	2	8	1	1000	1	1000	160	9 00	
Samuelson	150 00	
Im Ganzen.....	189	1959	30	219	32	\$103000	14	\$14800	\$4005 00	\$16670	252 40	
Quateme	31	203	4	75	5	\$67 00	1	\$1400	\$14 50	
Abnahme.....	

Bezirke für Bischöfe und Prediger.	Beiträge zu wohltätigen Zwecken.		Missions-Geselle.		Kirkensbau-Geselle.....	Trakt.-Coll.	Gennt.-S.-Union-Geselle.....	für Freedmen's Aid Society.....	Schul- und Erziehungs-Geselle.....	Nur die Bibel-Gesellschaft.....	Ansprüche...	Empfangen.	Bischofscollatte.....
	In den Kirchen.	In den Schulen.	Total...	Ausw. Frauen-Gesellschaft..									
St. Louis District.	209 00	\$78 00	\$287 00	\$5 00	\$190 00	\$5 00	\$2 00	\$5 00	\$6 00	\$4 00	\$160 00	\$160 00	\$12 00
St. Louis, West St. Louis.	44 00	31 10	75 10	40 00	40 00	3 00	2 00	2 00	3 00	4 00	750 00	750 00	5 00
" North	35 75	8 75	44 50	31 60	31 60	2 65	2 40	1 00	1 35	2 00	600 00	600 00	5 35
" South	15 90	15 90	33	1 25	1 00	1 00	50	600 00	600 00	1 00
St. Charles	66 00	12 25	20 00	33	1 00	1 00	1 00	2 00	375 00	375 00	3 00
Warrenton	120 60	16 70	82 10	24 90	24 90	2 00	2 00	2 00	4 00	2 00	500 00	500 00	4 00
Boonville	36 10	4 40	130 00	23 00	23 00	2 00	3 00	2 00	6 00	1 50	700 00	700 00	8 00
De Soto	18 00	10 50	46 60	1 00	1 00	1 00	1 00	450 00	450 00	6 00
New West and Marshville	22 50	4 50	27 00	26 00	26 00	1 00	1 50	1 00	2 00	500 00	500 00	2 50
Birmingham	24 05	5 15	29 80	3 40	3 40	2 30	2 10	1 50	2 35	1 00	500 00	500 00	3 10
Ballwin	26 15	15 00	41 15	69 00	69 00	1 00	1 55	2 10	4 00	1 00	240 00	240 00	3 40
Union and New Castle	24 95	1 20	26 95	32 00	32 00	2 00	1 00	1 00	4 00	2 00	600 00	600 00	3 40
Mountgentry	25 00	2 75	27 75	380 00	380 00	2 00	2 00	2 00	2 00	2 00	3 90
German	46 00	1 15	47 15	1 00	1 00	1 00	1 00	1 00	1 00	2 00	278 00	278 00	2 00
Draft	30 65	9 35	40 00	1 00	2 00	1 00	3 00	1 00	500 00	500 00	2 00
Elm Grove	27 25	1 20	28 45	1 00	2 00	2 00	3 00	4 05	450 00	450 00	3 25
Stefferson City	15 50	80	16 30	1 00	1 00	1 00	2 00	500 00	500 00	5 00
Stefferson	17 15	2 85	20 00	13 00	13 00	1 50	1 50	1 50	2 00	2 00	225 00	225 00	1 50
Samuelson	797 00	\$226 55	\$1023 55	\$883 90	\$883 90	\$32 28	\$30 50	\$20 65	\$45 90	\$28 35	\$9160 00	\$8634 00	\$806
Im Ganzen.....	\$8 80	\$28 58	\$36 18	\$295 05	\$295 05	\$6 18	\$1 50	\$11 65	\$10 90	\$10 05

Exhibit K
Fall Festival Program

PROGRAM.

ED WILSONMaster of Ceremonies
 MARSHA CLEARY..... 4:30 P.M.
 TOWN & COUNTRY BOYS..... 6:00 P.M.
 Bill Downs
 Jim Hubler
 Ray Sehart
 Barney Woods
 JACKIE GRAHAM Vocalist
 JENNINGS KITCHEN BAND..... 8:15 P. M.
 Members of Jennings Chapter, O.E.S.
 MARSHA CLEARY..... 9:00 P.M.

CHURCH CALENDAR

Sunday School..... 9:30 A.M.
 Morning Worship Service.....10:30 A.M.
 Women's Society of Christian Service--Second
 Monday each month
 Men's Dart Ball Club.....Second Monday each month
 Methodist Youth Fellowship---every Wednesday evening
 Methodist Men---Fourth Monday each month
 MONTHLY BAKE SALE--First Saturday each month

Rev. B. B. Harvey, Minister.

Many colorful and entertaining features may be found on the grounds. Be sure to visit each of the booths. The Committee wishes to thank all the workers for their co-operation and untiring efforts to make this FESTIVAL a success. We list below the Chairmen of the various Booths and Committees:

Food Chairmen	Mrs. Lou DeFoe
Ground Crew Chairman.....	Mrs. Boots Barnar
Needlework Booth.....	Mr. Marvin Fridley
Parcel Post Booth.....	Mrs. Fred Waller
Bakery Booth.....	Miss Margaret Trog
	Mrs. C. D. Walka
	Mrs. Chas. Starkey
Fish Pond.....	Mrs. King Wientge
Greeting Cards.....	Mrs. M. I. Fridley
Flowers and Novelties.....	Mrs. Rose Brown
Soda and Ice Cream.....	Mr. Cal. Rascher
Hoopla Game.....	Mrs. Clyde Wallace
Baseball Throw.....	Mr. Herman Thompson
Publicity.....	Mrs. A. W. Terry
Entertainment.....	Mrs. Fred Waller
Program Booklets.....	Mrs. Geo. Buermann
	Mrs. Oliver Blinne
General Chairmen.....	Mrs. L.B. Christofferson
	Mrs. A. W. Terry
	Mrs. Geo. Buermann
Projects Committee.....	Mr. Marvin Fridley
	Mrs. Fred Waller
	Mr. Ed. Klamburg

Exhibit L
Minutes of organization of Ladies Aid Society

Minutes of Ladies Aid of
Ballwin, St. Louis Co. Mo
Feb 3, 1897.

The Ballwin Ladies Aid Society of
the M. E. Church of Ballwin met on
the above date at Mrs. Jno. Kling

Members present.

Pres. Mrs. F. Franz
Vice " Mrs. C. C. Stalman
Sec'y Mrs. P. H. Weber
Treas. Mrs. C. F. Woetter

Executive Committee. Mrs. Kate Reinecke
" Mrs. Geo. Hartman
Mrs. Jno. Kling
Miss A. J. Davis

Other members. Mrs. J. J. Kessler
Mrs. Aug. Ludwig

Business of meeting. Making comforts
for Mrs. John Davis.

Quies collected	\$3.40
1 Quilt sold to Mrs. Woetter	2.50
2 Comforts Mrs. Davis	1.50
And in Treasury	<u>99.75</u>
Cash on Hand	\$47.15

Upon motion it was ordered that Mrs
John Kling serve as a committee of one
to buy goods for the purpose of
making aprons and tidies to be sold at
a Strawberry & Ice cream festival in June
Meeting adjourned by Rev. C. C. Stalman
at 4:30 to meet March 3rd at Mrs. Casper Woetter's

Exhibit M - Page 1
Minutes of organization of Women's Society of Christian Service

Woman's Society of Christian Service
The Chartered Meeting of the
Woman's Society of Christian
Service was held at the
Ballwin Methodist Church
on October 21, 1940.

The following program was
used:

Hymn, "Faith of our Fathers"

Rev. Chasteen called the
meeting to order and stated the
purpose of the meeting.

"The New Day" was read by
Mrs. Louis Hayward, followed by
the Doxology.

Prayer by Rev. Chasteen.

Statement of the Purpose and
Plan of the New Organization read
by Mrs. Hayward.

Enrollment Ceremony

Election of officers, Mrs. Louis
Hayward, President, presiding.

President appointed Lenora
Rascher and Bertha Peterson
to serve as tellers.

Exhibit M – Page 2
Minutes of organization of Women's Society of Christian Service

The following persons were elected by ballot:

Mrs. Shotwell, Vice-President
 Bertha Peterson, Secretary
 Ruth Kuobeloch, Treasurer

The President appointed the following committees

Program Committee

Mrs. A. R. Gundlach
 Mrs. Evelyn Chastain
 Mrs. Margaret House
 Miss Ruth Engler

Mrs. Shotwell, Vice-President,
 is Chairman of above committee.

Finance Committee

Mrs. Engler
 Mrs. Flora Buerman
 Miss Ruth Kuobeloch

Membership Committee

Mrs. Dena Koenig, Chairman
 Mrs. J. L. Peterson
 Mrs. Robert Schluener
 Mrs. L. J. Hummich
 Mrs. Louis DeFoe

Exhibit M – Page 3
Minutes of organization of Women's Society of Christian Service

Publicity and Printing Committee
Mrs. Oliver Blinne
Mrs. Martin Engler

The Charge to the New Society
read by Mrs. Hayward, followed
with prayer.

The meeting was closed with
prayer hymn.

Bertha Peterson
Secretary

Exhibit N

Minutes of organization of Wesleyan Service Guild

The first meeting of the Wesleyan Service Guild was held at the Church on June 12, 1957. There were nine members present. Agnes Gundlach told of her experiences at Arcadia on June 1 and 2. She then gave a brief report on the purpose and meaning of the Wesleyan Guild and also read the duties of each officer.

Necessary literature will be ordered.

Motion made, seconded and carried to accept offer of WSCS to turn over \$25.00 from their treasury to help our Guild get started.

The meeting was adjourned with prayer by Alma Roberts. Refreshments were then served by Agnes Gundlach and Flora Buerman.

Respectfully submitted

Epithea Kline

Secretary, Protem

Exhibit O Minutes of organization of Methodist Men

September 13, 1951

NAMES AND ADDRESSES OF CHARTER MEMBERS OF "METHODIST MEN"

Mr. Charles Starkey, President, Ballwin, Mo.
Mr. Harold Franklin, Vice-President, RR 1, Chesterfield, Mo.
Mr. Oliver Blinne, Secretary-Treasurer, Ballwin, Mo.
Mr. George Buermann, Representative for The Methodist Layman, Ballwin, Mo.
Mr. Marvin I. Fridley, Sr., Chairman, Program Committee, Ellisville, Mo.
Mr. C. D. Walka, Ballwin, Mo.
Mr. C. O. Peterson, Ballwin, Mo.
Mr. Hal S. Nash, Ballwin, Mo.
Rev. J. Ray Trotter, Pastor, Ballwin, Mo.

First meeting held September 13, 1951

Regular meeting date - fourth Monday, 8:45 p.m.

Exhibit P
Early Minutes of Epworth League

36

Sept. 24, 1923.
Mr. + Mrs. Charles Wagner
entertained the Epworth
League at their home, Sept.
24, 1923. Following the
opening song, prayer, and
scripture reading, the minutes
of the previous meeting were
read and approved. Next
the reports of the vice-
presidents were accepted.
The treasurer reported
\$58.34 in treasury. Moved
that we pay the electric
light bill of the church.
Edna Schlueter was elected
as the new secretary.
Adjournment.
Lidia Wagner, sec. pro tem.
per Edna Schlueter

Exhibit Q – Pages 1 & 2 – Original German Version
 25th Jubilee of German Methodist Church

Jubiläumsbuch

der

St. Louis Deutschen Konferenz

herausgegeben nach ihrer Anordnung zur Feier ihres

Fünfundzwanzigjährigen Bestandes

von

E. C. Magaret, D. D., Friedrich Kunz, D. D.,

Geo. B. Addicks, D. D.



Gedruckt bei

Jennings und Graham, Cincinnati, Ohio.

St. Louis-District.

William Knefe, D. D., Vorsitzender Kerkse.

William Knefe, Sohn des selig heimgegangenen Rev. Heinrich Knefe und seiner Gattin Katharina, eine geborene Ehlen, erblühte das Licht dieser Welt am 13. März 1838 in Marietta, Ohio, und genoss seine erste Ausbildung in den kirchlichen und Volksschulen seiner Umgebung, sowie später in dem Englisch-Deutschen Kollegium zu Quincy, Ill. Im Jahre 1856 wurde er unter der Amtsverwaltung von Rev. Adam Rippel in Springfield, Ill., als Prediger licenziert und ein Jahr später, im Herbst 1857, von der Gemeinde in Belleville, Ill., zur Aufnahme in den Reiseplan empfohlen. Im September dieses Jahres wurde er in die Süd-Illinois-Konferenz aufgenommen und als Prediger nach Edwardsville, Ill., gesandt. Nach einem Jahre wurde ihm Manchester, Mo., (jetzt Ballwin, Mo.) als Arbeitsfeld angewiesen, auf dem er zwei Jahre im Segen thätig war. Im Herbst 1859 trat er mit Anna Maria Schneider in den heiligen Ehestand, die 43 Jahre Freude und Leid des Lebens mit ihm teilte. Im Herbst 1860 wurde Cape Girardeau, Mo., sein Arbeitsfeld, aber die Kriegsunruhen jener Zeit störten die Entwicklung des Werkes daselbst in solchem Grade, daß er im folgenden Jahre nach Highland, Ill., versetzt wurde, woselbst er zwei Jahre blieb. Von hier wurde er 1863 nochmals nach Edwardsville, Ill., versetzt und von dort 1864 nach Beardstown, Ill., wo er drei Jahre wirkte. Von 1867—70 bezieht er den Krenpville-Bezirk, von 1870—72 Warfaw, Ill. Von hier



Wm. Knefe, Vorst. Kerkse.

er den Krenpville-Bezirk, von 1870—72 Warfaw, Ill. Von hier

Exhibit Q – Pages 3 & 4 – Original German Version 25th Jubilee of German Methodist Church

St. Louis - Distrikt.

293

wurde er nach Belleville, Ill., berufen, um schon nach einem Jahre diese Stellung mit dem Distrikts-Melkstenante auf dem Belleville-Distrikt zu vertauschen. Nach vierjähriger Thätigkeit auf diesem Posten fand er seinen Wirkungskreis in Nashville, Ill., und wurde drei Jahre später nach Pekin, Ill., berufen. Vom Herbst 1883—86 bediente er die Gemeinde in Warrenton, Mo., und darauf bis 1889 die Wash-Strasse-Gemeinde in St. Louis, Mo. Hierauf folgte eine fünfjährige gelegene Thätigkeit in San Jose, Ill. Die nächsten sechs Jahre diente er nochmals als Vorstehender Melkster auf dem Belleville-Distrikt und wurde dann zum zweiten Male nach Warrenton, Mo., gesandt, wo er weitere drei Jahre wirkte. Gegenwärtig ist er als Vorstehender Melkster auf dem St. Louis-Distrikt thätig.

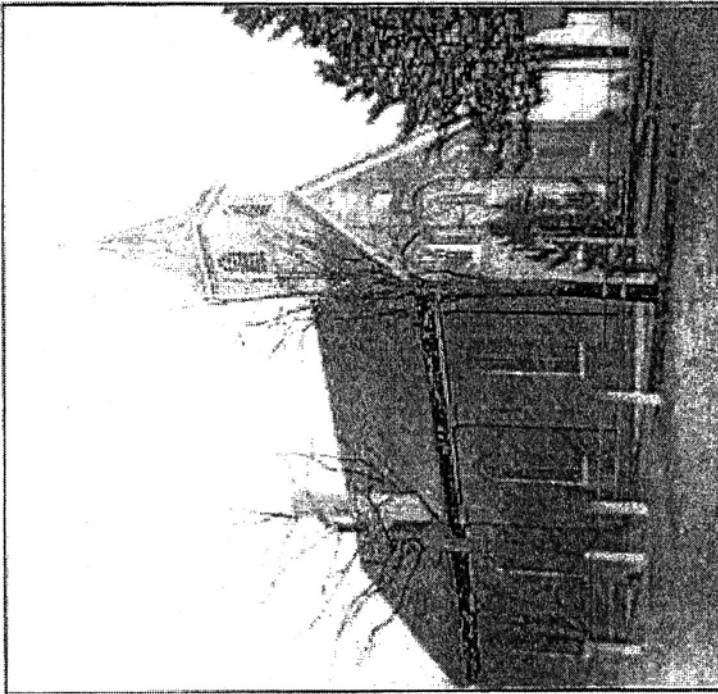
Die Konferenz erwählte ihn 25 Jahre lang als ihren Sekretär und sandte ihn sechsmal als einen ihrer Delegaten an die General-Konferenz. Vier Jahre, von 1876—80, diente er als Mitglied des Buch-Komitees und vier Jahre, von 1896—1900, als Mitglied des Kontrol-Rats der Epworth-Liga. Seit 25 Jahren sind ihm die Interessen der Erziehungslage als Schatzmeister, sowie die der Warrenton-Schule als Trustee der Anstalt anvertraut worden, sowie die Stellung eines Präsidenten im Board der Trustees. Dr. Köneke ist gegenwärtig, nach einer 47jährigen Thätigkeit im Predigtamte, der Nestor in der St. Louis Deutschen Konferenz und die Kirche ist zu der Erwartung berechtigt, daß er noch einige Jahre in den Reihen der aktiven Prediger arbeiten wird.

Ballwin, Mo.

„Was nichts ist, hat der Herr erwählt, daß er zu Ehrenden mache, was etwas ist.“ Dr. Heinrich Köneke, Sr., sandte als Vorst. Melkster Dr. S. Schumann als ersten Prediger nach Ballwin, Mo., der in dieser von Herrn Ball im Jahre 1837 gegründeten Stadt von 1846—48 wirkte und auf dem von dem Gründer geschenkten Bauplatz die erste Predigerwohnung errichtete. In jenem Jahre grafierte in St. Louis, nur 20 Meilen entfernt, die Cholera und decimierte die junge Gemeinde. Bis zum Jahre 1855 wurden die Versammlungen in den Häusern gehalten, ehe man zum Bau der ersten Kirche schritt. Die jetzige Backstein-Kirche wurde im Jahre 1870 unter der Amtsführung von Dr. M. Röder mit einem Kostenauf-

294 Jubiläumsbuch der St. Louis Deutschen Konferenz.

wande von \$5000 erbaut und ist eine Zierde der Stadt. Nebenan liegt der Friedhof, auf dem viele bis zum großen Tage der Auferstehung ruhen. Während der Amtsführung von Dr. Wm. Köneke verbrannte die Predigerwohnung mit allen Gebeligkeiten des Predigers (1858); er errichtete darauf die zweite und unter der Amtsführung von Dr. Heinrich Köneke, seines Bruders, wurde im Jahre 1888 die gegenwärtige Wohnung neben der Kirche käuflich von Dr. Köneke erworben. Dieses schön gelegene Kirchengeneigum liegt auf der Höhe der Stadt und man genießt von dort aus nach allen Richtungen hin eine romantische Aussicht. Manche Gesieder sind im Laufe der Zeit in die nahe Großstadt gezogen und andere hat der Herr in die ewige Heimat genommen, und doch zählt die Gemeinde noch etwa



Ballwin, Mo.

etwa 100 Mitglieder. Die Kirche wurde im Jahre 1888 die gegenwärtige Wohnung neben der Kirche käuflich von Dr. Köneke erworben. Dieses schön gelegene Kirchengeneigum liegt auf der Höhe der Stadt und man genießt von dort aus nach allen Richtungen hin eine romantische Aussicht. Manche Gesieder sind im Laufe der Zeit in die nahe Großstadt gezogen und andere hat der Herr in die ewige Heimat genommen, und doch zählt die Gemeinde noch etwa

Exhibit Q – Pages 5 & 6 – Original German Version

296 Jubiläumebuch der St. Louis Deutschen Konferenz.

selbst die Schule und widmete sich in Wajel der Baukunst drei Jahre. Er wurde daselbst am 4. März 1866 zum Herrn befehrt und diese selige Erfahrung ist ihm nicht nur stets geblieben, sondern im Laufe der Jahre bekräftigt und vermehrt worden. In jenem ersten Abend seines neuen Lebens gelobte er dem Herrn, ihm alle Tage seines Lebens zu weihen, ohne die Tragweite dieses Gelübdes zu ahnen. Bald drängte ihn eine innere Stimme zur Arbeit in den Weinberg des Herrn, und er konnte dem Rufe nicht widerstehen. So kam er zwei Jahre in das Wajeler Missionshaus unter Sosenhans und drei in das Predigerseminar unter Srion. Da er aber dort die gewünschte Herzenspflege nicht fand, so besuchte er nach seiner Ueberstiedlung nach den Ver. Staaten die Versammlungen der deutschen Methodisten. Dr. R. Sabighorst, der damalige Vorst. Meliste des Quincy-Districts, nahm ihn in die Kirche auf und gab ihn Dr. Chas. Sarns als Gehilfen, der die Gegend nördlich und östlich von Peoria bis nach Sairbury, Ill., bereisen mußte. Nach seinem Eintritt in die Konferenz bediente er Chandelville, Ill., 1872—73; Des Moines und Wolf City 1873—74; Cottleville, Mo., 1874—75; Lake Creek 1875 bis 1877, wo er eine Kirche baute und zwei gesegnete Lagerversammlungen hielt, die mit vielen Befehrungen gesegnet waren. Dann folgte Eudora, Kan., 1877—78; Peterssburg, Ill., 1878. Später wirkte er drei Jahre in Rock Island, Ill., vier Jahre in Nauvoo, Ill., in Farmington zwei und in Defoto, Mo., drei Jahre. Darauf war er fünf Jahre in Brighthon, drei in Mt. Vernon, Mo., und zwei Jahre in Steinhagen, Mo., thätig und wurde dann im Jahre 1903 nach seinem jetzigen Arbeitsfelde, Ballwin, Mo., versetzt, wo er im Segen und mit Erfolg arbeitete.

25th Jubilee of German Methodist Church

Exhibit Q – Pages 7 & 8 – English Translation 25th Jubilee of German Methodist Church

ST. LOUIS DISTRICT

William Köneke, D.E., District Supt.

William Köneke, son of the deceased Rev. Heinrich Köneke and his wife Katharins, born Ehlen, saw the light of this world March 13 1838, in Marietta, Ohio, and received his first education in the parochial and public schools of his community, as was later in the English-German College at Quincy, Ill. In 1856, he was licensed as a preacher under the administration of Rev. Adam Klippel in Springfield, Ill., and a year later, in the autumn of 1857, was recommended by the congregation in Belleville, Ill., for acceptance into the circuit. In September of 1857

this year, he was taken into the South Illinois Conference and sent as preacher to Edwardsville, Ill. After a year he was assigned to Manchester, Mo, (now Ballwin, Mo.) as his field of work, where he was active in blessing for two years. In autumn of 1859, he entered into holy matrimony with Anna Maria Schneider, who accompanied him through 43 years of the joys and sorrows of life. In autumn 1860, Cape Girardeau became his field of work, but because of the disturbances of war at that time, the development of the work was hindered in such a degree that he was transferred in the following year to Highland, Ill., where he remained years. From here he was transferred again in 1863 to Edwardsville, Ill, and from there in 1864 to Beardstown, Ill., where he worked for three years. From 1867-70 he served the Arenzville circuit, from 1870-72, Warsaw, Ill. From here he was transferred to Belleville, Ill., to exchange this position after a year with the District Superintendent of the Belleville District. After a four year activity in this post, he found his

der

ST. LOUIS DEUTSCHEN KONFERENZ

Herausgegeben nach ihrer Anordnung zur Feier ihres
Fünfundzwanzigjährigen Bestandes

Von

E. C. Magaret, D.D., Friedrich Munz, D.D.

Geo, B, Addicks, D.D.

Gedruckt bei

Jennings und Graham, Cincinnati, Ohio

Translated by
Dorothy Peterson
1964

Exhibit Q – Pages 9 & 10 – English Translation 25th Jubilee of German Methodist Church

sphere in Nashville, Ill., and was transferred three years later to Pekin, Ill. From autumn 1883-86 he served the congregation in Warrenton, Mo., and after that until 1889 the Wash Street Congregation in St. Louis, Mo. After this followed a five year blessed ministry in San Jose, **11.** For the next six years, he served **once** again as District Superintendent of the Belleville was then sent for the **second time to Warrenton, Mo., where he worked a further three years. At present he is active** as District Superintendent of the St. Louis District

The conference has chosen him their secretary for years, and sent him as their delegate to the General Conference six times. He served four years, from 1876-80, as a member of the Book Committee, and four years, from 1896-1900, as a member of the Control Advisory of the Epworth League. For 25 years he has been entrusted with the interest in educational matters, as Treasurer, as well as being a Trustee of Warrenton School, as well as the position of President of the Board of Trustees.

Dr. Köneke is at present, after his 47 year activity in the position of preacher, the venerable **old** man of the St. Louis German Conference, and the church is entitled to the expectation that he will still remain a few years on the list of active preachers.

Ballwin, Mo.

"The Lord has chosen that which is nothing that he might put to shame that which is something." Br. Heinrich Köneke, Sr., as District Superintendent, sent Br. H. Hohmann to be the first preacher at Ballwin, Mo. In this city, founded by Herr Ball in 1837, he worked from 1846-48, and erected the first parsonage on the building plot given by the founder. In that year the

cholera prevailed in St. Louis, only 20 miles away, and decimated the young congregation. Until 1855, the meetings were held in homes, before they took steps to build the first church The present brick church was built in 1870 under the ministry of Br. M. Rödder at a cost of \$5000., and is an ornament to the city. Next to it lies the cemetery, in which many rest until the great day of the Resurrection. During the administration of Dr. Wm. Köneke the parsonage burned with all the property of the preacher (1858); after that he erected the second parsonage, and under the administration of Br. Heinrich Köneke, his brother, the present dwelling next the church was purchased from Br. Schelp in 1888. This beautifully-situated church property lies on the height of the city, and they enjoy from there a romantic view in all directions. Many members have moved in the course of time into the near-by large city, and others have been taken by the Lord into the eternal home, and still the congregation numbers about 100 members, and the congregation possesses a vigorous Youth Group and an active Women's Missions Society. In October 1901 this congregation was able to celebrate their fiftieth anniversary amidst great praise and thanks to God. The brethren J. L. J. Barth, Dr. Addicks, Dr. Wm. Köneke and M. Rödder spoke uplifting words and the entire festival was a great success Twenty-seven preachers have sown the divine seed here in faith and were permitted to harvest richly now and then; Here, also, the Gospel has proved itself as a power of God; blessing all who believe therein. The following is the list of the names of pastors of this congregation: H. Hohmann 1846-48; John Keck 1848-49; J. Hübner 1849-50; H. Ellerbeck 1850-51; C. Hsch 1851-53; W. Rockert 1853-54; H. Tobler 1854-55; C. Bonn 1855-57; H. D

Exhibit Q – Pages 11 & 12 – English Translation 25th Jubilee of German Methodist Church

region north and east from Peoria to near Fairbury, Ill. After his entrance into the Conference, he served Chandlerville, Ill., 1872-73; Des Moines and Polk City 1873-74; Cottleville, Mo., 1874-75; Lake Creek 1875-77, where he built a church and held two blessed camp meetings, which were blessed with many conversions. Then followed Eudora, Kan., 1877-78; Petersburg, Ill., 1878. Later he worked for three years in Rock Island, Ill., four years in Nauvoo, Ill., two in Farmington and three in De Soto, Mo. After that he was active five years in Brighton, three in Mt. Vernon, Mo., and two years in Steinhagen, Mo. and was then, in 1903, transferred to his present field of work, Ballwin, Mo., where he has worked in blessing and with success.

Schmidt 1857-58; Wm. Köneke 1858-60; W. Floreth 1860-62; G. Böhrens 1862-64; J. Kölle 1864-65; J. Glantz 1865-67; H. Meyer 1867-68; M. Räder 1868-71; Wm. Schwind 1871-73; K. Skär 1873-74; M. Dewein 1874-77; H. Pfaff 1877-79; Wm. Schwind 1879-81; Phil. Hehner 1881-84; H. Thomas 1884-87; H. F. Köneke 1887-90; H. C. Jacoby 1890-95; C. C. Stehmann 1895-98; G. Günther 1898-1903; whom the present preacher, Wm. Fotsch followed in office.

The officers of the congregation are: Officials: P. Peter-son, C. Wërther, H. Hauhart, H. Bopp. Trustees: H. Bopp, C. Wërther, John Blank, P. Peterson, Seb. Bopp, Peter Schlüter, Dr. August Maisch, Georg Hartmann and Fr. Schlüter.

The present preacher, Wm. Fotsch was born October 8, 1847, at U.-Höllau near Schaffhausen in Switzerland, attended the schools there and dedicated himself to the building trade in Basel for three years. He was converted to the Lord there on March 4, 1866, and this blessed experience not only still remains with him, but in the course of years has been strengthened and increased. On this first evening of his new life he promised the Lord to devote all the days of his life to Him, without suspecting the range of this vow. Soon an inner voice compelled him to work in the vineyard of the Lord, and he could not resist the call. So he came for two years into the Basel Mission House under Josenhans and three in the Preaching Seminar under Irion. There he did not find the desired heart's care, so he attended, after his immigration to the United States, the meetings of the German Methodists. Br. R. Havighorst, the District Superintendent of the Quincy District at that time, took him into the church and gave him Br. Chas. Harms as assistant, to visit the

Exhibit R 1908 Plat Map of Ballwin

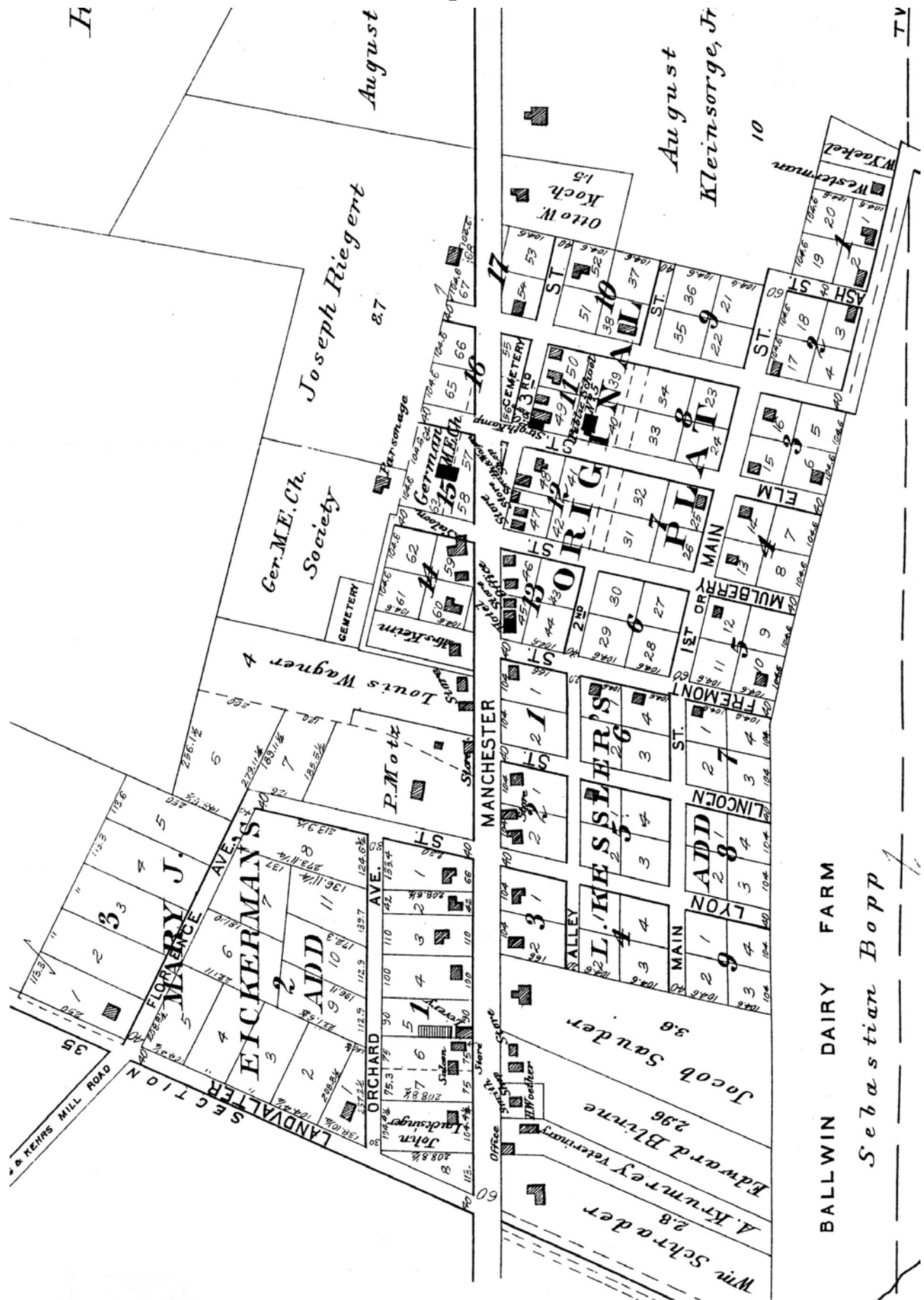


Exhibit S

Ballwin School District World War II Honor Roll

Roll of Honor Ballwin School District

Anderson, Billie D.	Hunnicut, C. Floyd	Potthast, Calvin
Arft, George A.	Hunnicut, Robert V.	Potthast, Marvin
Armstrong, Raymond J.	Judd, Leonard C.	Reavis, Charles
Armstrong, William J.	Kelly, Coyet	Rethmeier, Richard
Baumer, Elmer	Kelly, Russell	Rethmeier, Robert
Baumer, Herman A.	Ker, George	Rethmeier, Vernon
Bernhardt, Leonard J.	Kline, Norman F.	Rethmeier, William
Buerman, William C.	Koch, Ernest	Richard, Mathew, Jr.
Casey, Billy E.	Koch, Harvey	Sandstein, Milton
Chasteen, N. Clinton, Rev.	Koch, Walter	Scott, Henry F. Dr.
Dahlke, Melvin C.	Koebel, Herbert C.	Shotwell, Clarence L. Jr.
DeFoe, Lewis J.	Koebel, Roy J.	Smith, Edward A.
Essen, Donald F.	Kokesh, Edward	Smith, Warren J.
Feldmann, Bernard A.	Kraus, Clifford	Streiff, John P. Jr.
Frandsen, Paul H.	Kraus, R. William	Thompson, Thurman — Killed in Action
Frandsen, Vaughn H.	Marcus, Hyman	Trog, Louis H. Jr.
Gyaki, Gesa J.	Marcus, Isadore	Trog, Vernon E.
Herminghaus, Oscar E.	Mertz, Robert O.	Walka, Harold — Killed in Action
Holladay, Lester E.	Napier, Kenneth M.	Wardle, J. Heath
Holladay, Robert L.	Niere, Walter	Wissman, Lawrence G.
	Noltkamper, Leslie R.	Wolff, Richard J.
	Ogden, Curtis	



Ministers Who Have Served Salem in Ballwin United Methodist Church

Henry Homan	1846-1848	J. Martin Rhode	1904-1906
Johann Keck	1848-1849	John Henry Knehans	1906-1911
John Peter Hehner	1849-1850	Gustav A. Schmidt	1911-1915
Heinrich Ellerbeck	1850-1851	Otto R. Buess	1915-1918
C. Hoech	1851-1853	Frederich L. Mahle	1918-1920
W. Rotert	1853-1854	Henry Schlueter	1920-1925
H. Toelle	1854-1855	Otto M. Fabre	1925-1927
Christoph Bonn	1855-1857	David Timothy Simmons	1927-1930
H. D. Schmidt	1857-1858	Glen T. Beaty	1930-1932
William Koeneke	1858-1860	Joseph C. Needles	1932-1934
C. William Floreth	1860-1862	Wilburn S. Yoder	1934-1936
George Boeshenz	1862-1864	N. Clinton Chasteen	1936-1942
John Koelle	1864-1865	George W. Heslar	1942-1945
John Glantz	1865-1867	Ernest R. Slovensky	1945-1948
Henry Meyer	1867-1868	J. Ray Trotter	1948-1953
Michael W. Roeder	1868-1871	B.B. Harvey	1953-1956
Wilhelm Schwind	1871-1873	Delvis B. Roberts	1956-1962
C. Phillip Skaer	1873-1874	Howard E. Conner	1962-1966
Johann Michael Dewein	1874-1877	John M. Gillham	1966-1970
Henry Pfaff	1877-1879	Richard L. Connelly	1970-1973
Wilhelm Schwind	1879-1881	William Joseph Shamburger	1973-1976
Philipp Hehner	1881-1884	William Roy Foster	Interim 1976-1977
Johann Heinrich Thomas	1884-1887	Billy L. Secoy	1977-1982
Heinrich F. Koeneke	1887-1890	Robert C. Moger	1982-1987
Henry C. Jacoby	1890-1895	Kelly W. Holt	1987-1989
Christian C. Stahmann	1895-1898	Larry A. Williams	1989-1994
Charles Guenther	1898-1903	Nancy E. Schafer/Davis	1994-1998
William Fotsch	1903-1904	Christiane M. Batjer	1998-2004
		Julie K. Callaghan	2004-

**Ministers of Salem in Ballwin United Methodist Church
(German Methodist Episcopal, Ballwin MO 1846-1871)
(Later Called Salem Church of Ballwin)**

Henry Homan (1846-1848) Sent by St. Louis District Superintendent Rev. Henry Koeneke to be the first preacher. After leaving Ballwin he served at Hermann, Missouri. In 1849 he left the clergy and the archives contain no further information on him.

Johann Keck (1848-1849) Born May 12, 1813, at Bayrische Pfalz. Entered the ministry in 1848 (former Lutheran). Served 12 years. Died April 12, 1891, at Fernwood, Illinois.

John Peter Hehner (1849-1850) Born August 28, 1824, at Hessen-Nassau. Entered ministry in 1855 (former Lutheran). Served 35 years. Spouse Rosa Floreth. Died September 9, 1892, in St. Louis, Missouri. Buried Brighton, Illinois.



Heinrich Ellerbeck (1850-1851) Born November 29, 1818, at Westfalen. Entered ministry in 1850 (former Lutheran). Served 43 years. Married June 1, 1850, to Maria Reckmeyer. Died April 17, 1916, at Bushnell, Illinois.

C. Hoech (1851-1853) Left the ministry in 1860.

W. Rotert (1853-1854) Born April 1830 in Germany. Married Maria Achepohl. Died April 17, 1902, St. Paul, Minnesota. At one time was a circuit rider.

H. Toelle (1854-1855)
Believed to have been a local preacher who was a lay person.

Christoph Bonn (1855-1857)
Born January 21, 1822, at Kurhessen. Entered ministry 1850 (former Reformed). Served 16 years. Married Maria Eck February 26, 1846. Died September 25, 1918, at Quincy, Illinois. Buried at Canton, Missouri.



H. D. Schmidt (1857-1858) "Located" in 1865 from the Central German Conference of the Methodist Episcopal Church.

William Koeneke
(1858-1860) Born March 13, 1838, in Marietta, Ohio. Entered ministry in 1857 (former Methodist). Served 52 years. Married Anna Schneider September 22, 1859. Died March 2, 1923, in San Jose, Illinois. Was often a delegate to General Conference. Received an earned doctorate from Central Wesleyan College. Was a District Superintendent for 12 years.



C. William Floreth (1860-1862) Born August 30, 1831, at Hessen-Nassau. Entered ministry in 1860 (former Lutheran). Served 21 years. Married Mary Bollman August 28, 1888. Died February 21, 1899, at Truxton, Missouri. Buried at Chester, Illinois.

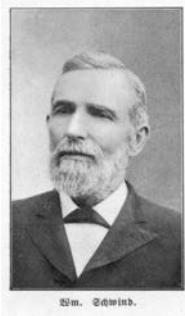
George Boeshenz (1862-1864) Born January 2, 1817, in Bavaria. Entered ministry in 1847 (former Lutheran). Served 20 years. Married Elisabeth Bechtholdt September 17, 1839. Died December 17, 1883. Buried in St. Louis, Missouri.

John Koelle (1864-1865) Born July 19, 1823, in Wuettemberg. Died March 8, 1870, in Boonville, Missouri.

John Glantz (1865-1867) Withdrew from the ministry in 1868.

Henry Meyer (1867-1868) "Located" in 1868 from the Southwest German Conference of the Methodist Episcopal Church.

Michael W. Roeder (1868-1871) Born July 31, 1833, at Kurhessen. Entered ministry in 1858 (former Lutheran). Served 45 years. Died April 30, 1904. Buried in Decatur, Illinois.



Wilhelm Schwind (1871-1873) Born January 1, 1836, in Baden. Entered ministry in 1858 (former Pietist). Served 43 years. Married Maria Jessey 1861. Died March 16, 1916, in Lindenwood, Missouri. Buried in St. Louis, Missouri.

C. Philipp Skaer (1873-1874) Born September 14, 1850, in Rheinprovinz. Entered ministry in 1871 (former Lutheran). Served 20 years. Married Rosa Schulze 1873. Died February 3, 1894, in Nokomis, Illinois.

Johann Michael Dewein (1874-1877) Born January 27, 1836, in Bayrische Pfalz. Entered ministry in 1859 (former Lutheran). Served 30 years. Married Elisabeth B. Schnure January 25, 1863. Died March 5, 1890, in Desoto, Missouri. In 1880 was serving as District Superintendent of St. Louis District of German Conference.

Henry Pfaff (1877-1879) Entered ministry in 1864. Served in what is now Salem in Ladue from 1866 to 1869 and again from 1873 to 1876.

Wilhelm Schwind (1879-1881) Second term at Salem.



Philipp Hehner (1881-1884) Born February 1, 1827, at Hessen-Nassau. Entered ministry in 1852 (former Lutheran). Served 33 years. Married Katherine Fehr in 1869. Died April 21, 1909, at Quincy, Illinois. Buried in Warsaw, Illinois.



Johann Heinrich Thomas (1884-1887) Born January 19, 1831, in Hessen-Nassau. Entered ministry in 1857 (former Lutheran). Served 35 years. Married Maria Wenzel August 18, 1859. Died February 13, 1918, in Aurora, Illinois.

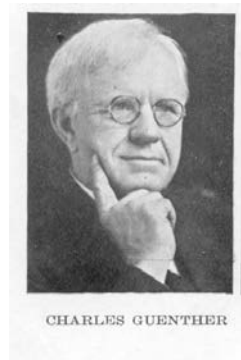
Heinrich F. Koeneke (1887-1890) Born October 9, 1829, in Hannover. Entered ministry in 1847 (former Pietist). Served 46 years. Married Catherine Mantz September 22, 1852. Died September 30, 1902, in Wichita, Kansas. Their daughter, Mary, married my great uncle, William Bopp, while they were at Ballwin.

Henry C. Jacoby (1890-1895) Born April 21, 1861, in Brighton, Illinois. Entered ministry 1886. Married Lydia Fiegenbaum in 1885. Had two sons who were born while serving in Ballwin.



Christian C. Stahmann (1895-1898) Born January 25, 1860, in Bremen, Germany. Entered ministry in 1883 (former Lutheran). Married Mathilda Murri in 1885. Retired 1929. Died May 1, 1933, in St. Louis, Missouri. Received an honorary doctorate from Central Wesleyan College.

Charles Guenther (1898-1903) Born October 4, 1862, in Hannover, Germany. Entered ministry 1889 (former Lutheran). Served 46 years. Married Gesena Brauer March 18, 1891. Died February 27, 1942, in Farmington, Missouri.



Buried in St. Louis, Missouri.



William Fotsch (1903-1904)
Born October 8, 1847, in Switzerland. Entered ministry in 1871 (former Evangelical). Served 33 years. Married Minnie Hansmeier in 1874. Died July 17, 1911, in St. Louis, Missouri. Buried Meredosia, Illinois.

J. Martin Rohde (1904-1906) Born December 28, 1852. Entered ministry 1881 (former Methodist). Served 37 years. Married Carolyn Riske 1880. Died December 20, 1918, in Ellis Grove, Illinois. Buried at Warrenton, Missouri.



John Henry Knehans (1906-1911) Born October 29, 1850, in Beaufort, Missouri. Entered ministry 1876 (former Methodist). Served 55 years and answered conference roll call 53 times. Married Wilhelmine Reinecke August 24, 1878. Died October 3,

1931, in Cape Girardeau, Missouri. Was superintendent of Central Wesleyan Orphans Home 8 years.

Gustav A. Schmidt (1911-1915) Born March 16, 1879, in Germany. Entered ministry 1904 (former State Church of Germany).



GUSTAV A. SCHMIDT

Otto R. Buess (1915-1918) Born July 12, 1879, in Wolfenbuttel, Germany. Entered ministry 1907, ordained elder 1911, and retired in 1947. Married Martha Koenig 1904. Died Mt. Vernon, Illinois. Buried in Bland, Missouri. Had two



REVEREND O. R. BUSS

daughters, Alma and Adella, both of whom married ministers. Alma was also a minister.

Friedrich L. Mahle (1918-1920) Born November 29, 1861, in Washington County, Minnesota. Entered ministry 1884 (former Methodist), ordained deacon 1886, and ordained elder 1888. Served 35 years. Married Elenore Mathilda Cress September 16, 1886. Married Laura A. Cress March 8, 1899. Died July 17, 1921, in Rochester, Minnesota. Buried in Mascoutah, Illinois. He had an honorary doctorate from the University of Iowa. He was appointed and served twice as District Superintendent.

Henry Schlueter (1920-1925)

Born November 22, 1856, in Barretts Station, Missouri. Entered ministry 1879 (former Methodist). Served 46 years. Married Margaret R. Gruner. Died August 12, 1939, in St. Louis, Missouri. Buried in St. Louis County, Missouri.



HENRY SCHLUETER

Otto M.

Fabre (1925-1927) Born 1897 in Belleville, Illinois. Ballwin was his first church and he served during Salem's 75th Anniversary. Married Irene L. Bernhagen October 23, 1925, while serving at Ballwin.



REVEREND OTTO M. FABRE

David Timothy Simmons (1927-1930) Born February 4, 1868, in Marshfield, Missouri. Entered ministry 1892, ordained deacon 1895, ordained elder 1897, and served 42 years. Married Eva Beulah Clark July 14, 1888, who died August 27, 1892. Married Mida Kitchen. Died August 1942 in Marionville, Missouri. Known for his beautiful voice. Often sang at conference.

Glen T. Beaty (1930-1932)
Born December 15, 1899, in Monett, Missouri. Entered ministry in 1921, ordained deacon 1926, ordained elder 1929, and served 39 years. Married Loretta Schlaedel. Died January 10, 1972, in Lexington, Missouri. Buried Carrollton, Missouri.



REVEREND GLEN T. BEATY

Joseph C. Needles (1932-1934) Born August 27, 1874, in Ohio. Entered ministry in 1908, ordained deacon 1911, and served 38 years. Died June 28, 1938, in Jackson County, Missouri. Buried in Kansas City, Missouri.



Dr. Wilburn S. Yoder (1934-1936) Born July 11, 1908, in Petrolia, Texas. Ordained 1926. Married Harriet Lindenman June 30, 1931. Had an earned Doctor of Theology from Iliff and an honorary doctorate from Central Methodist College. Prior to retirement he held executive position with the Board of Global Ministries in New York. Buried Garden City, Missouri.

REVEREND
WILBURN S. YODER

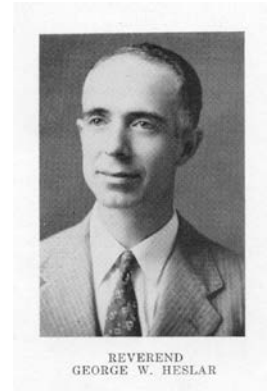
N. Clinton Chasteen (1936-1942) Born August 4, 1906, in Bloomfield, Missouri. Entered ministry 1931, ordained deacon 1935, and ordained elder 1937. Married Evelyn M. Bunnett October 8, 1928. Served as chaplain in the army in World War II and received five

decorations. After leaving the service he was District Superintendent on two different

REVEREND
N. CLINTON CHASTEEN

occasions. He had received an honorary doctorate from Central Methodist College. Died January 4, 1972. Buried Bloomfield, Missouri.

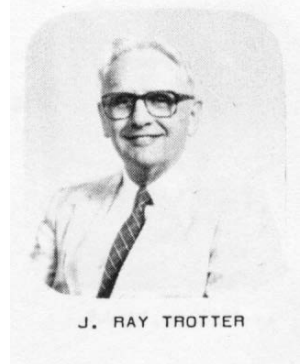
George W. Heslar (1942-1945) Born June 29, 1911, in Chilhowee, Missouri. Entered ministry 1934. Retired 1976. Married Eleanore C. Sedloss December 21, 1936. Married Doris M. Loveless November 15, 1977. He had received an honorary doctorate from Central Methodist College. Died August 20, 1980, in Hannibal, Missouri. Served two six-year terms as District Superintendent.

REVEREND
GEORGE W. HESLAR

Ernest R. Slovensky (1945-1948) Born February 17, 1912, in Steelville, Missouri. Entered ministry 1934, ordained deacon 1943, ordained elder 1945, and served 45 years. Married Marie Spaulding February 15, 1941. Married Arline Fay Loyd Buschmann August 8, 1965. Died March 12, 2003, in Mexico, Missouri.

REVEREND
ERNEST R. SLOVENSKY

J. Ray Trotter (1948-1953) Born September 11, 1920, in Unionville, Missouri. Entered ministry in 1941, ordained deacon 1950, and ordained elder 1951. Married Dorothy Hill Bryson June 30, 1943. Fourth generation Methodist minister who served over 25 years at Centenary Church in Cape Girardeau. He received an honorary doctorate from Central Methodist University. Died August 16, 1996.



J. RAY TROTTER

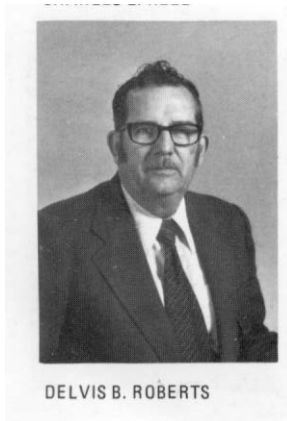


B. B. Harvey (1953-1956)
Born November 10, 1885, in Pittsylvania County, Virginia. Entered ministry 1914, ordained deacon 1916, and ordained elder 1919. Married Mary L. Butts November 10, 1912. Died May 24, 1956, during his

pastorate at Salem in Ballwin. The frame parsonage was named the "Harvey House" in his memory. Mrs. Harvey gave the stained glass windows in his memory. Buried in Fulton, Missouri.

Delvis B. Roberts

(1956-1962) Born February 28, 1916, in Lenona, Oklahoma. Entered ministry 1947, ordained deacon 1949, and ordained elder 1950. Married Alma Rene Cowl May 28, 1939. Retired in 1981. First family to live in the new parsonage. Died January 1, 2003, in St. Louis, Missouri.



DELVIS B. ROBERTS

Howard E. Conner (1962-1966) Born 1911 in Millersville, Missouri. Entered ministry in 1945 and ordained deacon 1948. Married Virginia Hufstedler. Died January 29, 1970, following emergency surgery. Buried

in Oak Hill Cemetery in St. Louis County.



John M. Gillham (1966-1970) Entered ministry 1960 and ordained deacon 1961. Married Marilyn Spencer in 1958. Received Ph.D. in 1975 from University of Chicago.



Retired in 2001 to Downers Grove, Illinois.



Richard L. Connelly (1970-1973) Born January 18, 1942, in Ironton, Missouri. Entered ministry in 1963, ordained deacon 1966, and ordained elder 1968. Married Brenda Seabaugh of Cape Girardeau in 1967. In 1978 Rev. Connelly gave up

parish ministry and helped organize Missouri Habitat for Humanity under the direction of the office of Creative Ministries and has worked in other home mission fields. Brenda founded PATCH giving help to families of prisoners in correctional centers. She is currently Executive Secretary of Church and Community Ministries working with deployed ministries in New York and North Carolina. Rev. Connelly has retired in Hickory, North Carolina.



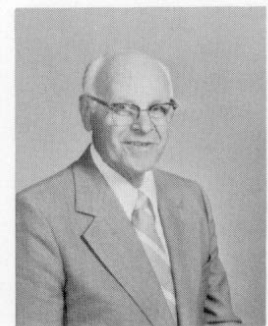
WM. J. SHAMBERGER

William Joseph

Shamberger (1973-1976)
Born February 21, 1933. Entered ministry 1966. Resigned from ministry in 1976. Died July 3, 2001, in Tulsa, Oklahoma. Buried Fort Gibson, Oklahoma.

William Roy Foster

(Interim 1976-1977)
Born August 3, 1906, in Moscow Mills, Missouri. Entered ministry 1930, ordained deacon 1936, ordained elder 1938, and served 42 years. Married Ruth Pauline Pennick August 1, 1930. Died October 25, 1993. Buried New Florence, Missouri.



WM. ROY FOSTER



BILLY L. SECOY

Billy L. Secoy (1977-1982)
Born January 6, 1938, in Caruthersville, Missouri. Began preaching at age 19. Ordained deacon 1966 and ordained elder 1968. Married Martha Naomi Guthrie January 18, 1964. Retired to St. Louis County, Missouri.

Robert C. Moger (1982-1987) Born July 28, 1935, in Kansas City, Missouri. Entered ministry 1964 and ordained deacon 1969. Married Vera Chowning March 17, 1956. Retired to Springfield, Missouri.



ROBERT MOGER

Kelly W. Holt (1987-1989)
Born February 11, 1951, in Trion, Georgia. Ordained deacon 1975 and ordained elder 1977. Married Lois Anne Stobie August 5, 1972 (later divorced). Died June 3, 1996.



KELLY HOLT

Larry A. Williams (1989-1994)
Born August 19, 1955, in Purcell, Oklahoma. Entered ministry 1985 and ordained deacon 1987. Married Sally Wilber 1983. After leaving Salem he went to St. Paul



Larry & Sally Williams & Lawson

School of Theology where he is now Vice President for Support Services.

Nancy E. Schafer/Davis (1994-1998)
Born March 11, 1952, in Hayti, Missouri. Entered ministry 1983 and ordained deacon 1984. Married Tom Schafer May 20, 1973. Married Rev. Bruce Davis January 1, 1995.



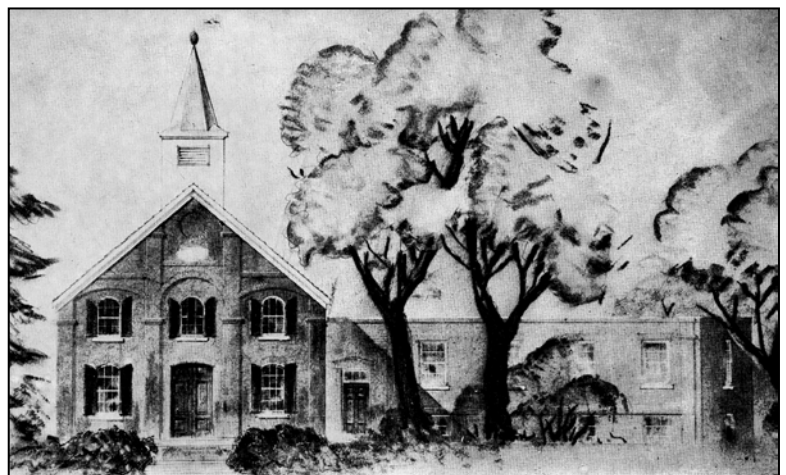
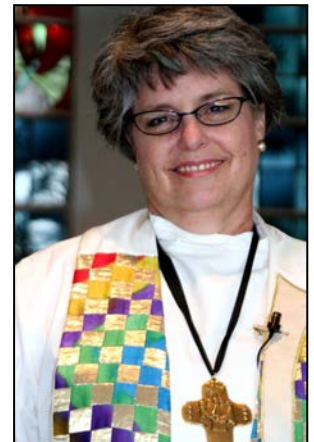
Nancy Schafer



Christiane Maurer-Batjer

Christiane M. Batjer (1998-2004)
Born August 21, 1955, in Hamburg, Germany. Entered ministry 1984 and ordained deacon 1986. Married Rev. Gregory Van Maurer August 28, 1982 (later divorced). After serving at Salem she went to serve in Warrenton, Missouri.

Julie K. Callaghan (2004-present)
Born March 9, 1955, in Lincoln, Illinois. Ordained deacon May 17, 1996. Ordained elder in the Missouri East Conference May 31, 1998. Married Michael T. Callaghan August 16, 1980.



Heritage Sunday April 24, 2005

Salem—The Early Years (Speech given by Bill Buermann)

Today I would like to take you back in time to the year 1846. A German Methodist minister by the name of Heinrich Holmann was assigned by his District Superintendent to go to the little frontier town of Ballwin where he was to establish a German Methodist Church to serve the immigrants arriving from Germany.

While there were German Methodist churches in St. Louis and the counties of Franklin, Jefferson, and Warren, this would be the first one in St. Louis County.

We know very little about Rev. Holmann except that he was born and educated in Germany. This was not unusual since most of the early ministers at Salem were born in Germany.

Unfortunately, our historical records do not start until the year 1858. Perhaps the records, if they ever existed, may have been lost in a parsonage fire.

However, his name is shown in our archives as being the minister here in the years 1846 and 1847.

How did Rev. Holmann get to Ballwin? Well, he probably arrived by horseback or horse and buggy. He traveled over a dirt road and had to contend with either dust or mud.

What did he find when he arrived in Ballwin? A frontier village consisting of 12 homes and a population of 84. Outlying farms may not have been included in these figures. There were three business establishments that you would find in every little frontier village. These were a general store, tavern, and blacksmith shop.

As I mentioned, the roads were dirt and you traveled by either horseback, horse and buggy, or by a springboard wagon pulled by a

team of horses. The latter was more common since it could also be used on the farms.

There were no utilities. It would be approximately 50 years before they had phone service and about 70 years before they had electricity. Water was obtained from cisterns and wells.

However, there was one thing they did have and that was postal service. Mail was delivered three times a week by a horse drawn mail wagon. St. Louis had a newspaper and if you subscribed, it would be delivered by mail. There was a doctor who made his rounds by horse and buggy and covered a large territory.

How was he received in Ballwin? Very warmly to say the least. Lodging was provided and services were held in the homes or possibly one of the business establishments.

Prior to his arrival they had to travel about seven miles to the German Evangelical Zion Church at Clayton and Ballas to worship in the German language. We know this to be factual because some of the founding families of Salem were shown on their membership rolls. This church is now known as the Parkway United Church of Christ. Consider how difficult it was for them to worship in their native tongue prior to the arrival of Rev. Holmann.

Life was not easy but they persevered and in 1847 received their "Seal of Organization" and became the German Episcopal Methodist Church in Ballwin. They would keep that name until 1871 when it became Salem.

In 1855 they built their first church. The building was also used as the first formal school in Ballwin and continued for 14 years. The minister served as the teacher and the language was German. A parsonage was built in 1858

replacing the need for rental quarters. Burials took place in the community cemetery.

Rev. Holmann was not around to see all this happen. Our records indicate that he was here in 1846 and 1847. What became of him? While we are continuing our research, at this point in time we don't have an answer. Perhaps he died in the cholera epidemic. Perhaps he decided to return to Germany, possibly as a Methodist Missionary. No name with this spelling is shown in the 1850 census.

All we know for sure is that he established a church that is still serving God and the community 158 years later.

For that we are eternally grateful.

NOTE: Later research has indicated that Rev. Holmann served at the German Methodist Church in Hermann, Missouri, after leaving Ballwin. He apparently left the clergy in 1849 and there is no further mention of him in the archives. The actual spelling of his name was Homan and not Holmann which made our research more difficult.

Heritage Sunday April 23, 2006

The First Service That Was Held At Our Present Church (Speech given by Bill Buermann)

The date was September 4, 1870. The church had just been completed and was an imposing structure for its time. It was the only brick building in Ballwin and its location on a hill made it visible from a long way off.

The members had been looking forward to this day. They had been worshipping in a small frame church that was located a few hundred yards south of the present structure. It had been sold to the school district in 1869 for \$800 with the church reserving the right to conduct its services there until the present church was built. The new church was built at a cost of \$4,500.

They began arriving early. They either walked or came by horse and buggy. Some came from as far away as Barrett Station Road to the east, St. Paul Road, and Clayton Road to the west. Most of those who walked came from the little village of Ballwin itself. Manchester Road had been graded and rocked a few years earlier and this made travel less difficult. The new church had a membership of 75 and a capacity of a little over 100. The church was smaller than it is now as you can tell by where the ceiling is dropped.

As they entered the sanctuary they were greeted by the Rev. Michael Roeder. He was 37 years old and had just completed his second year

at Ballwin. He was born and educated in Germany. He entered the ministry in 1858 and served as a German Methodist minister for 45 years and died in 1904 at the age of 70. He was transferred in 1871 after serving three years at Ballwin.

He would be wearing a flock coat. When my grandparents arrived, they most likely would have been greeted as Brother Karl and Mrs. Buermann. An elderly grandmother could be addressed as Mother Buermann.

There was no such thing as a bulletin. Instead the hymns and readings were posted on a "hymn board" at the front of the church.

If it were a cloudy day and lights were needed, they were provided by four kerosene lamps. After they were fueled and the wicks were trimmed they were raised by cords and tied in place.

They noticed two pot bellied wood burning stoves in the front of the church. They would not be required today but would be used to provide heat during the winter months. They also noted another outside door in the northeast corner of the church.

The bell that was recently installed would be rung one half hour before the service started.

This was known as the first bell. The second bell was rung at the start of the service.

There was a pump organ located in the northwest corner of the church. There was a screen next to the organ behind which a young man would do the pumping while the organist played. In later years my older brothers had this job. If there was a choir, this is where it would be located. This area also served as a Sunday School class. In later years when there was a youth choir, they were located in the northeast corner.

The sermons were longer than they are today. Some ministers before beginning their sermon would take out their pocket watch and place it on the pulpit. Sometimes this would dictate the length of the sermon and other times it had no bearing.

There were probably some dignitaries in attendance. These may have included the District

Superintendent who was then known as the Presiding Elder. Perhaps someone from the German Methodist Headquarters in Cincinnati may have been present.

On January 3, 1871, the first wedding took place in the church when my maternal grandparents, Henry Bopp and Mary Kessler, were married.

Let's look at how things have changed. Today we have a different mode of transportation, paved streets, different language, modern conveniences, updated organ, expanded sanctuary, bulletins, and the list goes on and on.

Yet some things have not changed. We still come here to worship God, seek guidance, ask for forgiveness and ease one another's burdens.

These things have not changed.
THANKS BE TO GOD.

What is that Hanging from the Balcony???



I'll answer that as best I can. Mark Hug, a trustee, was repairing a light fixture up in the attic area when he spotted it. He and Bob Meinz, Music Director, brought it down through the belfry, which was probably no easy task.

My opinion is that it was used in the small frame church that was located a few hundred yards south of here.

Since it has holders for candles, I would assume it was used inside.

Again it is only conjecture, but I believe that it was stored in the attic until an appropriate location could be found. This never happened and it remained there for approximately 136 years.

The German words on it are "Ehre Sei Gott In Der Hohe" which have been translated to be "God in Heaven will be honored."

You will notice that I used the words opinion, assume, and conjecture in my explanation, so I feel I am well covered. More research is required.

Heritage Sunday April 29, 2007

(Speech given by Bill Buermann)

Good morning and welcome to Salem's 2007 Heritage Sunday service. The year 2007 is also the 160th anniversary of the founding of our church, which was then known as the German Methodist Episcopal Church of Ballwin.

Today I would like to go back to the founding and recall some of the important events that have occurred in the life of Salem from then up to the present time.

Let's go back to 1847 and see what life was like for the founders of our church.

Ballwin was a frontier village with 84 residents living in 12 homes. The three business establishments consisted of a general store, tavern, and blacksmith shop. Farming was the main occupation.

What about utilities and other services? There was no electric or phone service. It would be about 50 years before they had phone service and approximately 70 years before they had electricity. Water was obtained from cisterns and wells. They did have horse and buggy mail service which meant that they could correspond with their families back in Germany. While there was a doctor, his practice would cover a large area. Babies, most likely, would have been delivered by a midwife.

If there was a fire, it would be fought by a bucket brigade. Ballwin was part of Bonhomme Township and law enforcement was provided by constables, a sheriff, and justices of the peace.

Manchester Road was little more than a dirt trail and it would be another two years before they would start grading and rocking it.

Some of the important events in the life of Salem:

In 1855 the first church was built. Prior to that time they had been meeting in homes. This same year Salem started the first formal

school in Ballwin. They used the church building with the minister serving as the teacher.

In 1858 a parsonage was added near the church to replace a rented building that had burned down. It is possible that some of our earliest records may have been destroyed in the fire.

In 1861 the Civil War began and I had three great uncles who fought for the Union. They were members of Salem and are buried in our cemetery. My great grandfather, one of the founders of the church, was a buyer of livestock for the Union Army and his barns were burned by Southern sympathizers as retribution. Several years prior to the Civil War the Methodist Churches split and most joined the Methodist Episcopal Church South. Our neighboring church in Manchester had this designation until 1939 when the two branches reunited. Salem and the other churches of the German Conference remained loyal to the Union.

In 1869 the church building was sold to District 45 of the Board of Education for \$800 with the church reserving the right to hold services there until a new church was built.

In 1870 the present church structure was built at a cost of \$4,500.

On January 3, 1871, the first marriage was performed when my grandparents, Henry Bopp and Mary Kessler, exchanged their wedding vows.

In 1879 the first session of the German Methodist Episcopal Church was held in St. Louis. The conference minutes indicate that Salem had a membership of 85. The church building was valued at \$5,000 and the parsonage at \$500. The minister was Rev. William Schwind whose salary was \$600 per year. By the way, Rev. Schwind was the only minister out of the 57 who have served Salem to be assigned to Salem more than one time.

In 1917 because of anti-German sentiment during World War I the services were conducted in the English language. After the war services resumed in the German language on a once a month basis until about 1930 when Rev. August Koewing, a retired Methodist minister who was living in Ballwin, gave the last sermon in German.

In 1925 the German conference merged with the English conference.

In 1929 the Great Depression hit. Being a child of the Depression I have some recollections of that time period. My father, who was a blacksmith, earned \$2 to shoe a horse and 35 cents to sharpen a plowshare. While this doesn't sound like a lot of money, it was more than some of the farmers could afford. In some cases he would accept produce from the farmer in lieu of cash. The members of Salem banded together and helped those in need. They maintained the church, paid the pastor, and continued to support the district and conference. They survived and were stronger for it.

In 1941 we were again at war. About 20 members and friends of Salem either enlisted or were drafted. Our pastor, Rev. N. Clinton Chasteen, left the pulpit at Salem and joined the Army as a chaplain. For his service he would be awarded four bronze stars. One of our members, Harold Walka with whom I was confirmed, was killed in Italy. A memorial dedicated to all those who had served was erected on the church lawn. It remained there until the highway was widened and is now located in Vlasik Park. (See Exhibit S)



In 1950 an education wing was built which proved to be very timely as our Sunday School enrollment increased to 350.

One of the major fundraisers to support the new addition was a fall festival. (See Exhibit K.) At its height it had food, games, and novelty booths as well as a country store where home grown vegetables were sold. It had a talent show where the winner would appear on TV. It also had a Tom Thumb wedding, kitchen band, music, dancing, and a trapeze artist. Radio personalities such as Ed Wilson served as MC. Senator James Symington also appeared. The booths were set up on the west side of the church and the stage was set up in front of the old parsonage. It was well attended and was one of the major festivals that was held in west St. Louis County.

In 1955 a new parsonage was built with the Rev. Delvis Roberts and his family being the first occupants. The old parsonage remained and was used as classrooms and office space until it was torn down in 1972. It had been named "Harvey House" in memory of Rev. B. B. Harvey who passed away while serving at Ballwin.

In 1958 a new chancel and sanctuary expansion was completed. This again proved timely as our membership had grown to 575.

In 1962 Salem assisted in the formation of the Ellisville Methodist Church with 100 members transferring to start the church. So we in a sense became the "Mother Church" for Ellisville.

In 1989 the last expansion was completed. This provided us with a much larger social hall and additional facilities that we had been lacking.

In 2006 the final payment was made on this expansion.

Missions

Our facilities have always been open to the community. Examples are:

- AARP uses our facilities to prepare tax returns for seniors
- 13 Scouting organizations meet here at the present time
- CORP maintains an office here
- Rockwood School District used our facilities when they had a shortage of classrooms
- Space was provided for a cooperative preschool and a YMCA nursery school
- Ballwin Rotary Club has been meeting every Tuesday for their luncheons since 1955
- The Board of Election and the Red Cross have used our facilities
- Space has been provided to counsel those addicted to drugs and alcohol
- We have provided temporary housing for homeless individuals
- Youth groups visiting St. Louis or passing through use our facilities.
- Bits and Pieces Quilt Guild
- West County Woodcarvers Club

Salem was one of the organizing churches of the Circle of Concern. One of our members, Walter Beranek, served as Circle's president for 14 years. Others have served on the Board of Directors while still others contribute of their time and offer material and financial support. We sponsor a Thanksgiving dinner for all their clients.

We were one of the main supporters when there were special askings for the Rio Grande Conference. In addition to financial support we visited their churches to offer assistance.

Alice Krechel is active in VIM (Volunteers in Mission) and has worked in Mexico, Mississippi, and Florida. Alice has also participated in the Harvest of Hope of the Society of St. Andrew. One of their projects is the Harvest of Hope Potato Mission.

Our Youth Summer Work Camps were started in 1994. Our youth have worked in the states of West Virginia, Tennessee, South Dakota, North Dakota, Michigan, Wisconsin, South Carolina, Wyoming, and Ohio. In some years we had two groups. In 1995 our youth went to an International Gathering in Salt Lake City.

Salem is supportive of the Methodist Church in Mozambique. This began when Rev. Larry Williams was pastor. We have a covenant relationship with Rev. Isaias Felipe Machegane Face from the Zambezia District.

We have worked with the Habitat for Humanity in the building of homes in St. Louis.

Youth groups, Methodist Men, and the various women's groups have all helped both within and outside the Methodist Church.

We at Salem are proud of our heritage and look forward to a bright future.

Organizations

Women

The first women's organization at Salem was called the Ladies Aid Society. They held their first meeting on February 3, 1897. There were ten women present. Mrs. F. Franz was president. (See *Exhibit L*)

This was followed by the Women's Society of Christian Service who held their charter meeting on October 21, 1940. (See *Exhibit M*) Mrs. Louis Haywood was president. There were 19 women in attendance. At one time the names of the circles were Deborah, Ruth, Martha, Mary, and Susannah.

The Wesleyan Service Guild held their first meeting on June 12, 1957. (See *Exhibit N*) There were nine members in attendance. This organization was an auxiliary of the WSCS (Women's Society of Christian Service) and was composed of employed women who had to set other times for their meetings.

In 1974 the name was changed to the United Methodist Women. Myra Joyce served as president.



Mother-Daughter Banquet 1982

Above Photo: Naomi Secoy
Bottom Photo: Ann Callier



Susannah Circle – March 1991

Above from left to right: Mary Alice Krampf,
Marge Nelson, Virginia Jordan, Jane Pursley,
Teresa Scholbohm, Sally Williams



Men

The national organization began to issue charters in 1942 for the Methodist Men's Clubs. The first meeting was held at Salem on September 13, 1951. Charles Starkey was president and there

were nine charter members present. Six years later there were 48 members, which was 34 percent of the adult male membership. The average attendance was 26. (*See Exhibit O*)



Methodist Men – 1950's



United Methodist Men - 1982
 Serving at the Mother Daughter Banquet
From left to right: Roland Callier, George Kissinger, Larry Ralston, Sam Cooley, Unknown, Tom South



UM Men BBQ – 2008
 Pork Steaks & Beef Brisket that is so good ... It's Famous!
 UM Men donate thousands of dollars each year to causes from the funds they raise.



Seniors



JOY Group
Back Seat
 (From left to right)
 Doris Venghaus,
 Nina Marten,
 Unknown

Front Seat
 Unknown,
 Margaret Trog,
 Rev. Rose Carithers

The JOY Group (Just Older Youth) was formed in 1984 and held their first meeting on October 21. The president was Mrs. Janice Edmiston. The purpose of the organization was to meet the social and spiritual needs of the members. This group disbanded in March of 1996.



The Goldenaires held their organizational meeting April 6, 1995. Mrs. Velma Buermann served as president. They disbanded in 2006.

The Goldenaires

(From left to right) Bill Buermann, Elmer "Bud" Sneathen, Velma Buermann, Jackie Walka, Lorena Daubendiek, Virginia Jordan, Fran Sneathen, Verta Miller, Gilda South, Mary Dickens, LaVerne Arft, Lewis DeFoe, Roger Williams, Marie Williams, Ray Saul, Jodi Saul, Betty Caswell, Marie Kruidenier

Youth

The Epworth League was founded in 1889. (See Exhibit P) Salem started their Epworth League in 1904. We have minutes in our files that date back to 1922. Sometime after 1968 the name was changed to United Methodist Youth Fellowship (UMYF).



United Methodist Youth Fellowship – 1988 - Halloween Party
(From left to right) Front Row: Rob Hardcastle, Ross Duff, Kari Baum, Doug Hurt
Back Row: Sean Stewart, Lisa Ralston, Emily Stewart, Carol Baum, Unknown



1993 Youth Council
(From left to right) Back Row: Dorothy Snow, Katie Goddard, Michelle Valley, Joy Duff, Joe Dealey, Natasha Hicks, Susan Duff Jespersen
Front Row: Alex Niere, Melanie Noel, Meredith Goddard



1994 UMYF Float Trip

Sunday School

We have records that cover the years 1885 to 1909 which indicate that there were 50 to 72 scholars in attendance. Two individuals who served many years as Sunday School superintendents were Charles Peterson and Louis Wagner.



Koinonia Class – 2002
Photo to the left, from left to right:
 Bruce Colella, Holly Wehrle, Jackie Thompson, Jane Pursley, Becky Carter, Terry Pursley, Warren Livingston (*Standing*), Susan Duff Jespersen, Bruce Pittman, Sallie Pittman, Mrs. Colella



Sunday School Class – Late 1970's
Photo to the right, from left to right:
 (*Back Row*): Ed Montgomery, Keith Krewson, Grace Cooley, Tammy Krewson, Sam Cooley, Bob Kight, Velma Buermann, Bill Buermann,
 (*Front Row*) Billie Montgomery, Tom South, LaVerna Ingram, Larry Ralston



Sunday School Class – 1960
 Pictured below in front of Harvey House



1st & 2nd Grade – 2001
Photo above, from left to right: Taylor Delgado, Rachael Wehrle, Hunter Delgado, Trevor Carper, Bonnie Koestel, David Fischer, Jennifer Koestel, Unknown, Zoe Gnaedinger, Christina Vogt

Confirmation Classes



Confirmation Class of 1930

Rev. Glen Beaty, Pastor

Photo to the left, Back Row, left to right:
Unknown, Unknown, Norman Kline

Front Row

Ethel Koebel, Rev. Glen Beaty, Freida Walka

Confirmation Class of 1938

Rev. N. Clinton Chasteen, Pastor

Photo to the right, Back Row, left to right:
Marvin Hesemann, Bill Buermann,
Rev. N. Clinton Chasteen, Harold Walka

Front Row:

Helen Vehlewald, Marion Buermann,
Melba Vehlewald, Janet Hausman



Confirmation Class of 1941

Rev. N. Clinton Chasteen, Pastor

Photo to the left, Back Row, left to right:
Robert Hunnicutt, Unknown, Unknown,
Rev. N. Clinton Chasteen, Bernard Feldmann,
Melvin Walka

Front Row:

Elsie Frandsen, Mildred Hunnicutt, Unknown,
Unknown, Betty Frandsen



Confirmation Classes



Confirmation Class of 1949

Rev. J. Ray Trotter, Pastor

Photo to the left, Back Row, left to right:

Lawrence Kokesh, Mary Alice Starkey, Richard Barber, Mary Louise Trog, Richard (Dickie) Hall

Front Row:

Shirley Montgomery, David Blinne, Carol Buermann, Glenn Bopp, Dorothy Buermann



Confirmation Class of 1962

Rev. John Gillham, Pastor

Photo to the left, Back Row, left to right:

Robbie Robinson, Jimmy Main, Dennis Sneathen

Front Row:

Unknown, Debby Sneathen, Unknown, Unknown



Confirmation Class of 1980

Rev. Billy Secoy, Pastor

Photo above, Back Row, left to right:

Teresa Ralston, Lorraine Goering, Deanna Davis, Patrick Light

Front Row:

Cindy Jordan, Julie Deuser, Unknown



Confirmation Class of 1983

Rev. Robert Moger, Pastor

Photo to the left, Back Row, left to right:

James Ralston, David Moger, John Claspille

Front Row:

Debra Goering, Allison Light, Amy Montee, Craig Davis, Ricky Carter

Confirmation Classes



Confirmation Class of 1993

Rev. Larry Williams, Pastor

Photo to the left, Back Row, left to right:

Rebecca Pursley, Rev. Larry Williams, Joshua Stewart

Front Row:

Meredith Goddard, Melanie Noel, Brooke Moergen

Confirmation Class of 1994

Rev. Larry Williams, Pastor

Photo to the right, Back Row, left to right:

Lesley Buermann, Rev. Larry Williams,

Unknown

Front Row:

All Unknown



Confirmation Class of 2001

Rev. Christiane M. Batjer, Pastor

Photo to the left, left to right:

Amanda Vogt, Robert Jones, Pastor

Batjer, Samuel Baker, Brian Mack



Confirmation Class of 2002

Rev. Christiane M. Batjer, Pastor

Photo to the right, Back Row, left to right:

Sally Hennis, Cathy Gregory, Susan Jespersen,

Chris Murray

Middle Row:

Warren Livingston, Melissa Murray, Linda Ayres,

Joshua Schlobohm, Ashley Kirk, Daniel Jones,

Front Row:

Patrick Baker, Alison Jones, Molle Thompson,

Fran Sneathen



Members and Constituents of Salem Who Were Honored as Mr. and Mrs. Ballwin Days at the Annual Festival

Mrs. Martha Walka - 1978
Ms. Lizzie Buermann – 1979
T. J. Hunnicutt – 1982
Ed and Helen Kokesh – 1986
Mrs. Florence Hunnicutt – 1988
Ms. Bertha Peterson – 1989
John Loomis – 1991

Ms. Esther Kline – 1991
Paul and Florence Norris – 1993
Mel and LaVerne Ingram – 1994
Louis Defoe – 1996
Mrs. Ethel Hall – 1996
Ms. Margaret Trog – 1997

Wayman and Gladys Green – 1998
Bill and Velma Buermann – 2003
Mrs. Verna Arnold - 2007
Mel and Jackie Walka – 2008

NOTE: The title in 2007 and 2008 was “Outstanding Seniors” rather than Mr. and Mrs. Ballwin Days.



1978 – Martha Walka



1986 – Helen Kokesh



1989 – Bertha Peterson



1991 – Esther Kline



1993 – Paul & Florence Norris



1994 – Mel & LaVerne Ingram



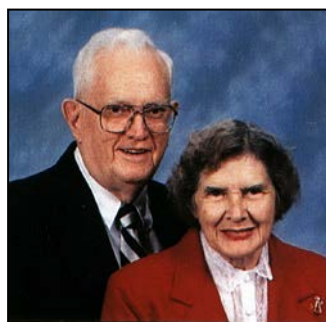
1996 – Louis Defoe



1996 – Ethel Hall



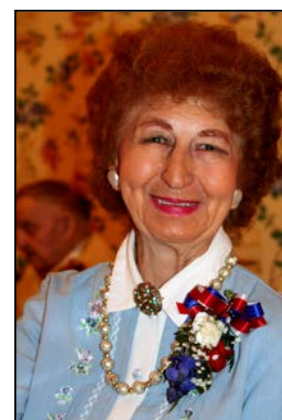
1997 – Margaret Trog



1998 – Wayman & Gladys Green



2003 – Bill & Velma Buermann



2007 – Verna Arnold



2008 – Mel & Jackie Walka

Weddings



Pictured above:
**Marriage License for
 Charles Buermann and Ada Bopp
 April 23, 1902**

Photo below:

**Wedding of
 Florence Buermann & T.J. Hunnicutt
 June 5, 1926**

Cousins Ada Buermann, later Schmidt, and George Buermann are to the left of the bride. Bill McKinnon and Helen Bopp are to the right of the groom.



**Tom Thumb
 Wedding.**

**One of the
 attractions at
 the Fall Festival
 in the 1950's**

Weddings



Photo to the left:
**Wedding of
Alice & Roger Krechel
July 26, 1952**

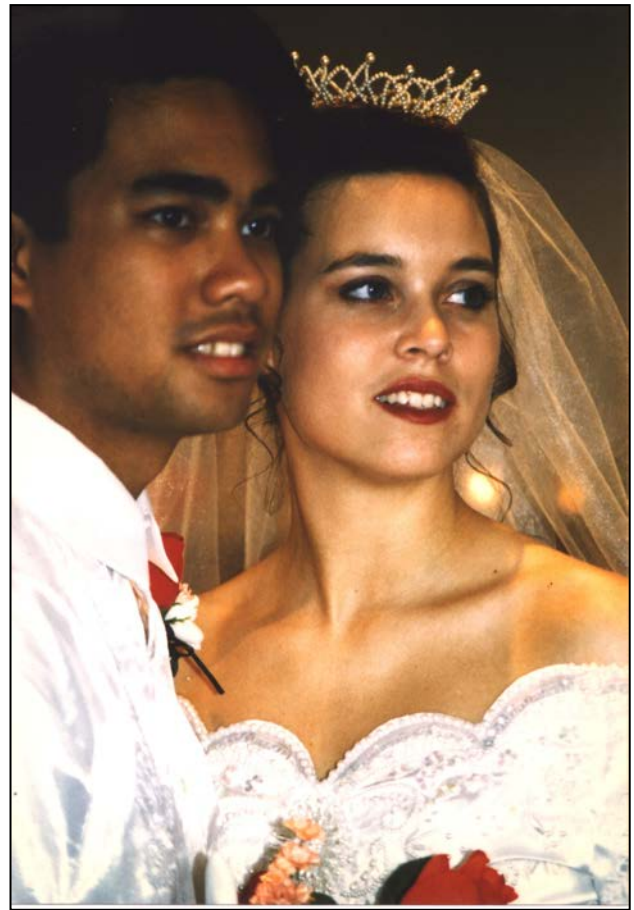


Photo above:
**Wedding of
Lisa Ralston & Nelson Garcia, Jr.
April 19, 1997**



Photo to the left:
**Wedding of
Teresa Ralston & Keith Roberts
May 27, 1990**

Weddings



Photo to the left & below:
**Wedding of
Jackie Krumrey & Melvin Walka
June 11, 1949**



Photo to the right:
**Wedding of
Mary Louise Trog & Forrest Gilley
May 24, 1958**
First wedding in the new Salem sanctuary



Did You Know Tidbits

In the 1950's Salem was authorized to place a stop sign in the middle of Manchester Road that would stop all traffic and allow members to cross the street for Sunday services.

Salem had regular Sunday evening services up until sometime in the 1950's.

Before Salem had electricity the Christmas tree was decorated with candles that were lit and watched closely. The tree was always a very tall cedar that had been cut on one of the member's farms. Sunday School students would always receive a box of candy and an orange.

One of the perks some of the early pastors received was grain for their horse. Some of the early ministers maintained a vegetable garden.

Katie Cloyd was a representative to the 2000 General Conference that was held in Cleveland, Ohio. Salem has always been well represented at the district and conference levels.

Bertha Peterson was confirmed July 16, 1922, and remained a loyal and dedicated member until she passed away June 22, 2003. That was over 80 years. Her sister, Florence, was confirmed in 1925 and has been a member for 83 years as of 2008 and lives in Ballwin.

Following the Hungarian uprising in 1956 Salem took in a refugee family who stayed with us until a work opportunity caused them to leave.



In the early 1950's Salem would have an annual turkey dinner as part of its fund raising activities. Some of the ladies would take a turkey home and bake it a day before the dinner. After a

lapse of a few years it was resumed as a Community Thanksgiving Dinner for the clients of the Circle of Concern. Everyone was welcome and it has been well attended.

Salem has had two individuals who were established poets. In 2005 Mae S. Peterson received the "Outstanding Achievement in Poetry" award from the International Society of Poets. She also has a book of poetry that has been published. Mille (Hunnicut) Wallace had three books of poetry published.

A co-operative nursery school opened in 1968 with Betty Heggs as teacher. A YMCA pre-school followed it.

Boy Scouts date back to at least 1965 when Troop 687 met at Salem. The present era of Scouting began in 1991 when Rev. Larry Williams named Bob Vogt as Scouting Coordinator. Salem's United Methodist Men assumed the charters of Troop 787 and Cub Pack 621 from the Bonhomme Lions Club in March 1991. They assumed the charter of coed Venturing Crew 2783 in March 1997 from Lafayette High School. Each year over 200 youth and adults from the community are members of these units. 23 Scouts have become Eagle Scouts since 1991.



Amanda Vogt, Venturing Crew 2783, served as the 2007-2008 Central Region Venturing President (over 13 states) and in May 2008 was selected as National Venturing President. The National Venturing President is the highest national youth leadership position in the largest youth organization in the nation. (In 2007, 4.6 million youth were in the Boy Scouts.)





Girl Scouts date back to at least the early 1990's when they began meeting at Salem. At present Troops 1192, 2193, 2356 and 4447 meet at Salem.



Since 2002, The United Methodist Men have conducted the God & Country Award program for the youth of our community. Over 50 youth have completed the program. Both the Boy Scouts & Girl Scouts recognize the God & Country program as their religious emblem award.

completed, they moved to Salem and our relationship continues to this day.

The AARP began using our facilities to file tax returns for senior citizens in 1990. They continue to provide this service.

The Fireside Five began meeting in the mid 1980's. The purpose of the organization is to bring together small groups of six to ten people to get acquainted and enjoy a simple meal.

Salem is a member of the Lafayette Dartball Church League that was formed in the early 1950's. They have a baseball diamond painted on a large target board at which they throw 6" darts underhanded. They follow the rules of baseball.



2006 Dart Ball Team



1972 - Honoring 50 Year Members

In April 1986 Salem honored 17 individuals who had been members of Salem for 50 or more consecutive years. Twenty years later in September 2006 another 27 members were so honored.

The first monthly newsletter was called the "Beacon". It was followed by the "Courier". It was also referred to as the "Salem Life Lines" and at other times just the "Newsletter". Other publications honoring anniversaries were the Diamond Jubilee in 1926, the 100th Anniversary in 1947, the 130th Anniversary in 1977, the Bi-centennial (200th anniversary of the founding of the Methodist Church) in 1984, and the 150th Anniversary in 1997.

In 1981 a playground was built east of the church.

In 1974 the church purchased an Allen organ to replace the Hammond organ. In 2006 a new Allen organ was purchased.

The church may have started using bulletins when Rev. Otto Fabre was pastor (1925-1927). Prior to that a hymn board was used.



The Ballwin Rotary Club was started in 1950 and met at the Masonic Hall for their luncheons until 1955. When our East Hall was

The church has always had a summer Vacation Bible School. At times Salem and Manchester would join together to hold this program.



Salem receives 2002
Community Service Award
from St. Louis County for
hosting CORP

CORP (County Older Residents Program) has been using our facilities since 1989. Martha Drier had been the coordinator since 1991 until her retirement in 2007.

Our church library was established in the mid 1970's when Thusnelda Schmidt donated funds in memory of a loved one. She was the daughter of Rev. Gustav Schmidt who was pastor at Salem 1911 to 1915. Jo Ellen Hurt has been the librarian since the 1980's. Over 1,240 adult and 635 children books are catalogued in the library.

Mulberry Street used to run along the west side of the church. It was vacated in 2002 but had been used many years prior to that as the entrance to the parking lot. The present parking lot was purchased from William and Minnie McKinnon in 1960.

In its early years the church would have a "Pound" supper where every member would bring a pound of foodstuff for the minister's larder and comfort.

Manchester Methodist Church first met in a carding mill in space provided by John Ball. This was in 1827 and sheep raising was very important at that time because of the wool that was produced.

When Salem was 10 years old there was consideration given to constructing a railroad

from Manchester to the existing line at Barretts Station. This never got beyond the planning stage.

The first German Camp Meeting was held in 1843 at the campgrounds near the intersection of Clayton and Brentwood Roads. While Salem was not yet formed, it is very possible that they participated in later sessions. The sessions usually began on a Thursday and ended on the following Tuesday.

On October 6, 1871, the church was incorporated as the "Salem Church of Ballwin" in the circuit court of St. Louis, Missouri. Two members who signed the document were Fred Schelp and Sebastian Bopp.

The stained glass windows were a gift from Mrs. B. B. Harvey in memory of her late husband, Rev. B. B. Harvey, who died while serving at Ballwin.



In 1904 the St. Louis District Conference of the German Methodist Episcopal Church celebrated a Jubilee in observance of the 25th year of their existence. They published a Jubilee Book in which Dr. William Koenke, who was pastor at Ballwin from 1858 to 1860, was given recognition. Also recognized was Rev. William Fotsch who was pastor at Ballwin at the time of the Jubilee. It also listed all the ministers who served at Ballwin from 1848 to 1904 and gave a brief history of the formation of the church, which is presented in more detail in other parts of this book. (*See Exhibit Q.*)

In 1991 Salem received the first place award for Community Beautification (landscaping) during Ballwin Days.

In 1976 a white oak tree located on church property was designated as a "Liberty Tree" being at least 200 years old. It was standing over 20 years before John Ball came to the area and over 70 years before Salem was founded. It is no longer standing.

Bibliography

Ballwin—The City With A Future, 1979, by Caverly Scott Wallace

Salem (Ladue)—Congregations of the Faithful, by Bob Appel

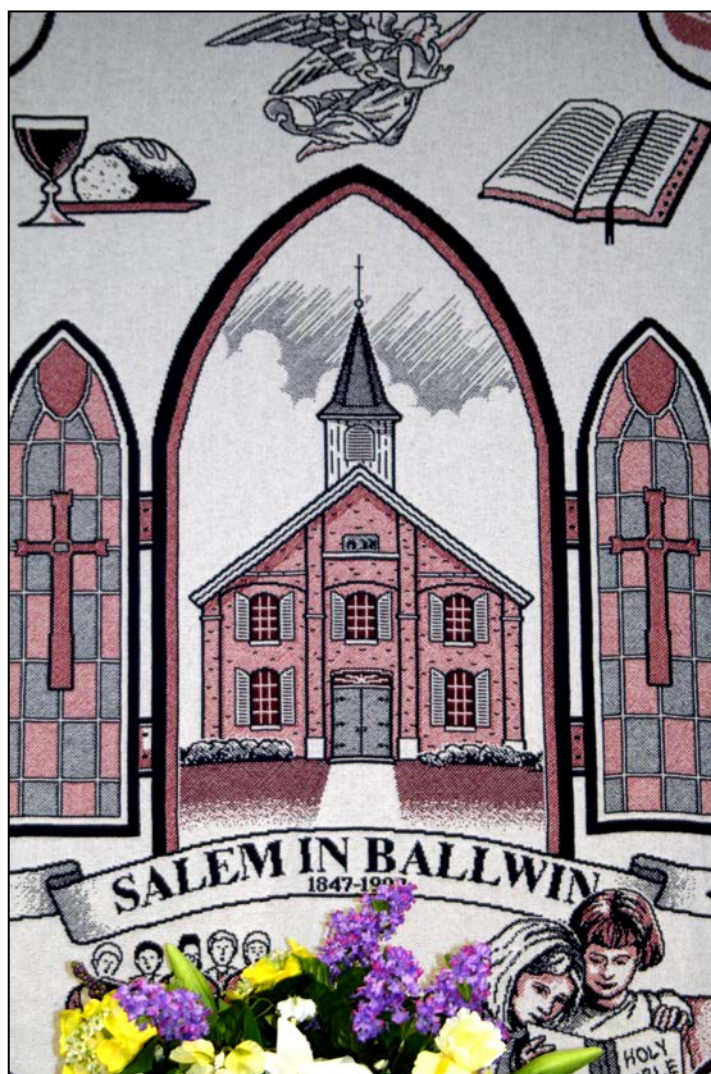
Ballwin in the Beginning and the Story of John Ball, by Dr. W. M. Shankland

Missouri Conference Archives, Fayette, Missouri

Cincinnati Museum Center, Ohio

Archives and History Center of the United Methodist Church, Drew University, Madison, New Jersey

Pickler Memorial Library, Truman State University, Kirksville, Missouri



The Church by the Side of the Road

By Bonnie Lou Risby 2006

Inspired by the History researched by Bill Buermann

Dedicated to Congregations Past and Present of Salem in Ballwin

United Methodist Church, known for many decades as "The Church By the Side of the Road"

Sung to melody of "Church In Wildwood" by William Pitts 1862

There's a church in Missouri by the roadside
The church by the side of the road
No spot is so dear to my mem'ry as the
Church by the side of the road.

CHORUS

(O—come, come, come, come...)

O—Come to the church known as Salem
The church by the side of the road
No spot is so dear to my mem'ry
As the church by the side of the road.

Many years she has stood by that roadside
A witness to the passage of time
Many changes she's seen in the landscape
But on Sunday her bell clearly chimes.

O, come to God's house by the roadside
She humbly invites one and all
To hear and rejoice in the Good News
Of the Savior who died for us all.

Many souls in this church house have tarried
To feast at this altar of God
Many now rest in the churchyard
As they slumber beneath the green sod.

O, come to the church known as Salem
God's house by the side of the road
Enter and part with your burdens
God will feed and revive your poor soul.

She has stood by the road through the seasons
Through peace, war, famine, and flood
She has welcomed the wretch and the sinful
Redeeming those cleansed by His blood.

She has stood many years by the roadside
A Witness to life's ebb and flow
Humbly she waits to embrace you
As your name is inscribed on God's roll.

The doors to this chapel are open
This church by the side of the road
Won't you come and partake of God's promise
Won't you hurry to lighten your load?

O, come to God's house by the roadside
Built on Christ's solid rock
Where ninety and nine wait to greet you
And welcome you to His own flock.



Photo taken after a church service in 2002