

# Mimari + Metal

## Architecture + Metal

VOL.2



# Tecrübemiz avantajınız

## Our experience is your advantage

45 YEARS

Faaliyetlerine 1975 yılında metal işlemeyle başlayan üretim ve mühendislik firması Kasso, 1986 yılında genişletilmiş metal levha üretimini de bünyesine katarak Tekşan-Kasso ortaklığını kurmuştur.

Kasso Mühendislik, bugün İstanbul Anadolu Yakası Organize Sanayii bölgesinde yer alan fabrikasında, ileri teknolojiye sahip patentli makineleri ile müşterilerine yenilikçi çözümler sunabilen ve proje teslimi ürünler geliştirebilen tam teçhizatlı bir metal işleme tesisi niteliğindedir.

Tüm imalat konularını tek bir çatı altında toplayan Kasso Mühendislik, tek noktadan yönetim ve işletme felsefesiyle faaliyetlerine devam etmektedir. "Mimaride Metal Kabuklar" kavramını yapı sektöründe oturtmuş olan markanın ürünleri, endüstriyel uygulamaların yanı sıra mimari projelerde de önemli bir yer edinmiştir. Kasso, yıllar içinde edindiği deneyim ve birikimin neticesinde kendi sektöründe bir ilke imza atarak Türkiye'nin 71. tasarım merkezini açmaya hak kazanmıştır.

Kasso is an engineering and manufacturing firm that has specialized in metalworking since its foundation in 1975. In 1986, the company extended its activities by embarking on expanded mesh metal sheet manufacturing through the Tekşan-Kasso partnership. Today, Kasso Engineering boasts a fully equipped metalworking plant in its headquarters in the Istanbul Anadolu Yakasi Organized Industrial Zone. Here, the company operates patented high-technology machinery that enables to offer innovative solutions and turnkey projects for its clients.

Kasso Engineering continues to grow with the philosophy of becoming a one-stop-shop for its clients' metalworking needs. As the innovator of "Architectural Metal Cladding" in the construction industry, the brand's products are widely used in industrial applications, as well as architectural projects. Empowered by its extensive experience and know-how gained over the years, Kasso is registered as the 71<sup>st</sup> Design Center in Turkey and very 1<sup>st</sup> in its industry.

Kasso, ürün ve hizmetlerinin müşteri gereksinimlerini tutarlı bir şekilde karşılanmasını sağlamak ve sunulan kaliteyi sürekli olarak iyileştirmek adına 2004 yılında ISO 9001:2015 sertifikasını almaya hak kazanarak kendi sektöründe kalite belgesi alan ilk şirket olmuştur. Farklılık yaratmak isteyen, müşterilerinin görüş ve düşüncelerine önem veren ve bu görüşleri sürekli geliştirmek adına ISO 10002 : 2004 Müşteri Memnuniyeti Yönetim Sistemi belgesine, Çevre Yönetim Sistemi'ne yönelik ISO 14001 : 2015 ve İş Sağlığı ve Güvenliği konusunda OHSAS 18001 : 2007 belgesine sahiptir. Kasso, çelik ve alüminyum yapıların imalatını ve montajını düzenleyen ve Yapı Ürünleri Yönetmeliği tarafından tanınan Avrupa standartlarına uygun üretime dair ISO EN 1090 belgesine sahiptir.



Kasso became the first company in its industry to receive ISO 9001:2015 certification in 2004 in order to ensure that its products and services meet customer requirements consistently and to continuously improve the quality offered. As a corporation in quest of making a difference, which cares the opinions and thoughts of its customers, it has ISO 10002:2004 Customer Satisfaction Management System certificate, ISO 14001:2015 Environmental Management System certificate and OHSAS 18001:2007 certificate for Occupational Health and Safety, in order to enhance these opinions constantly. Kasso, has the certification of ISO EN 1090 for execution of steel structures and aluminium structures for European Norms.



Kasso, 2010 yılında Türk Standartları Enstitüsü'ne (TSE) başvurarak 2013 yılında Türk Standartlarına Uygunluk Belgesi (TSE Markası) almıştır.

Kasso applied for certification with the Turkish Standards Institution (TSE) in 2010 and received its TSE certification in 2013.



Kasso, ürünlerinin Avrupa Birliği içerisinde serbest dolaşımını sağlayan ve Avrupa güvenlik standartlarına uygunluğunu gösteren CE belgesini 2017 yılında almıştır.

In 2017, Kasso received the CE certification indicating that its products comply with the European standards and can be traded freely in the European Union.



Kasso, Robotik Toz Boya Tesisi yatırımı ile 2017 yılında Avrupa merkezli alüminyum boyama kalite sertifikası olan Qualicoat ve Qualicoat Seaside belgelerini almaya hak kazanmıştır.

In 2017, Kasso received the European aluminum paint quality certifications Qualicoat and Qualicoat Seaside for its Robotic Powder Coating Plant investment.



Kasso, 2017 yılında kendi sektöründe ilk, Türkiye'de ise 71. tasarım merkezini açmıştır.

In 2017, Kasso opened the first design center in its industry and the 71<sup>st</sup> in Turkey.



44'Ü AŞKIN ÜLKEYE  
İHRACAT  
EXPORTS MORE THAN  
44 COUNTRIES



YILLIK ÜRETİM KAPASİTESİ  
48.869 TON  
ANNUAL PRODUCTION  
CAPACITY 48.869 TONS



BOYAHANE YILLIK  
KAPASİTESİ  
520.000 M<sup>2</sup>/YIL  
PAINTSHOP ANNUAL  
CAPACITY 520.000 M<sup>2</sup>



TOPLAM 7 ADET FAYDALI  
MODEL BELGESİ  
A TOTAL OF  
7 UTILITY MODELS



TOPLAM 5 ADET  
PATENT  
A TOTAL OF  
5 PATENTS



## Sektör / Sectors

**Ticari / Commercial**  
Ofis 360 / 360 Office  
İstanbul, Türkiye



**İbadet / Place of Worship**  
Kahramanlar Camii  
Kahramanlar Mosque  
İstanbul, Türkiye



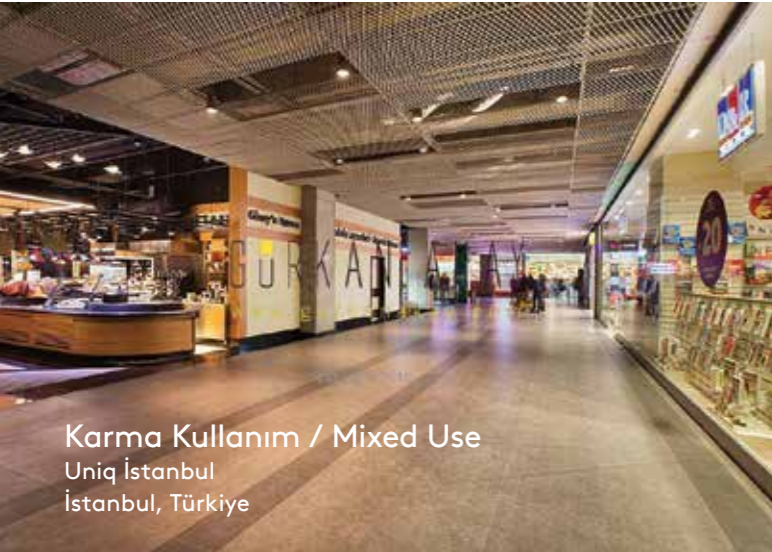
**Konut / Residential**  
Selçuklu Vadi  
İstanbul, Türkiye



**Eğlence / Entertainment**  
Bomontiada Babylon  
İstanbul, Türkiye



**Karma Kullanım / Mixed Use**  
Uniq İstanbul  
İstanbul, Türkiye



**Alışveriş Merkezi / Shopping Mall**  
Forum İstanbul  
İstanbul, Türkiye



**Eğitim / Education**  
Türkiye Uçuş Eğitim Merkezi  
Turkish Flight Training Center  
İstanbul, Türkiye



**Karma Kullanım / Mixed Use**  
Bodrum Müze / Bodrum Museum  
Bodrum, Türkiye



**Ofis / Offices**  
Erke Green Academy  
İstanbul, Türkiye



**Endüstriyel / Industrial**  
Pharmactive Üretim Tesisi  
Pharmactive Production Facility  
İstanbul, Türkiye



**Kamu / Public**  
İzmir Jeotermal Hizmet Binası  
İzmir Geothermal Service Building  
İzmir, Türkiye

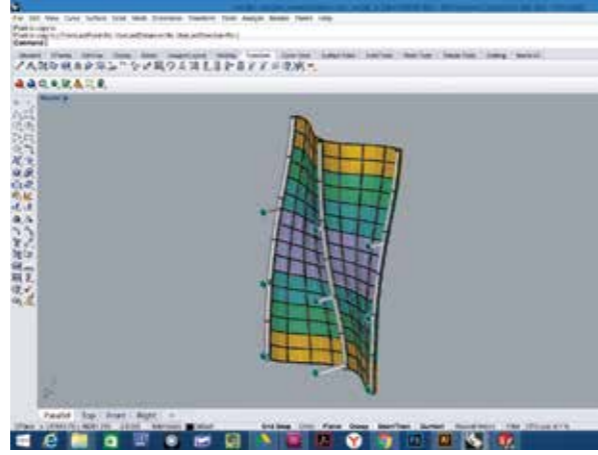


**Alışveriş Merkezi / Shopping Mall**  
Ocean Plaza  
Kiev, Ukraine





## Hizmetlerimiz / Our Services



### Tasarım Hizmetleri ve Destek

KASSO, mimari uygulamalar için ürettiği işlenmiş metal levhaların sabitlenmesi için sistemler geliştirerek müşterilerine çeşitli çözümler ve teknik destek sağlamaktadır. Şirketin uzmanlık alanları arasında cephe montaj sistemleri, asma tavan montaj sistemleri, çeşitli materyalleri barındıran alt yapılar, ses ve ısı izolasyonunu destekleyici ürünler ve mimari açıdan dekoratif duran sabitleme öğelerinin tasarımı yer almaktadır.

### Design Services & Assistance

KASSO offers solutions and technical assistance in the development of fixing systems for processed sheet metal works in architectural applications. The company's areas of expertise include designing of façade mounting systems, suspended ceiling installation systems, sub-structures accommodating various materials, supporting products for acoustic and thermal insulation, as well as architecturally decorative fixing elements.

### Mühendislik

KASSO'da, malzeme seçimi ve mimari estetiği, malzeme işlenmesi ve oryantasyonu dahil olmak üzere tasarımlar için kapsamlı mühendislik hizmetleri sunmaktayız. Değer mühendisliğine önem veren Kasso, hem imalat hem montaj aşamasında maliyetlerin düşürülmesi ve israfın önüne geçilmesi amacıyla fizibilite çalışmaları yaparak tasarım optimizasyon konusunda destek olmaktadır.

### Engineering

KASSO provides comprehensive engineering services for designs, including material selection and architectural aesthetics, material processing and orientation. As a company that prioritize the value engineering, KASSO renders assistance for design optimization by making feasibility studies in order to reduce the costs and prevent wastage.



### Üretim

KASSO olarak genişletilmiş ve perfore metal levhalar kullanarak cephe ve asma tavan projeleri gerçekleştirme konusundaki uzun yıllara dayanan deneyimimizi müşterilerimizle paylaşmaktan gurur duyuyoruz. Montaj maliyetlerini düşüren hızlı bağlantı sistemleri gibi sektöre öncülük eden uygulamaların yanı sıra ürünlerimizin performansını daha da iyileştirmek amacıyla inovatif malzemelerin kullanımı ve üretim süreçleri üzerine uzmanlığımızı kullanıyoruz. Panellerimizin değer mühendisliğine önem veren bir şirket olarak KASSO'da ayrıca müşterilerimize modülasyon konusunda destek olarak hem imalat, hem de montaj aşamasında malzeme israfının önüne geçmeye ve maliyetleri azaltmaya özen gösteriyoruz.

### Production

As KASSO, we are proud to offer our vast experience in facade and suspended ceiling projects using expanded and perforated metal. In addition to industry-leading applications such as quick coupling systems that reduce the cost of installation, KASSO also has expertise in using innovative materials and manufacturing processes to improve the performance of its products. As a company that prioritize the value engineering of panels, we provide assistance in modulation issues to our clients in order to reduce waste and lower the costs, during both production and installation.

### Montaj

KASSO, tasarımlara sağladığı üstün kaliteli bitiş ve detay imkanları ile montaj destek hizmeti vermektedir. Mühendislik ekiplerince optimize edilen birleşim detayları, doğru sistemler ile montajın hızlı ve kolay tamamlanması hedeflemektedir. KASSO ayrıca dünyanın dört bir yanında bulunan iş ortakları sayesinde montaj işleminin hızlı, kolay ve doğru bir şekilde gerçekleştirilmesini sağlamaktadır.

### Installation

KASSO provides installation assistance service by ensuring high-quality edges and details for the designs. The connection details optimized by the engineering teams, aim for easy and fast completion of installations with the appropriate systems. Thanks to its business partners all over the world KASSO also assures fast, easy and accurate installation operations.





KASSO Mühendislik 44'ü aşkın ülkeye dünya standartlarında üretilen ürünlerimiz, yüksek kalite ve üst düzey hizmet anlayışımızla ülkemiz ihracatına katkı yapmaya devam ediyor.

KASSO Engineering continues to contribute to our national economy by exporting its world-class products to more than 44 countries with exemplary customer service.

Dünya çapında sayısız mimari proje için sofistike yapılar yaratıyoruz.

We create sophisticated structures for numerous architectural projects all over the world.



Katar Bilim ve Teknoloji Parkı  
Qatar Science & Technology Park  
Doha, Qatar



Kuveyt Uluslararası Havalimanı  
Kuwait International Airport  
Kuwait City, Kuwait



Médiathèque Du Kremlin - Bicêtre - L'écho  
Paris, France

### Temeller

KASSO, kırk yılı aşkın deneyime sahip olan kurucularının vizyonu ile, müşterilerin gereksinimlerini dinleyip anlayabilme ve ilk fikir noktasından montaja kadar projenin tüm aşamalarında destek sağlayabilme kapasitesi sayesinde ilk günden beri öne çıkmaktadır.

### Foundations

With the vision of the founders of more than 40 years' experience and thanks to its ability to listen and understand the customer needs and to provide assistance at all stages of a project, from the initial idea to the final installation, KASSO holds the leading position.

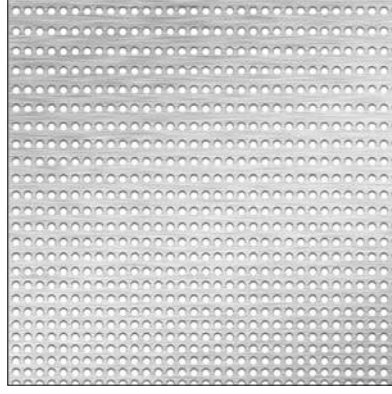
### İnovasyon

Sürekli gelişim ve inovasyonu hedefleyen Tasarım Merkezimiz ihtiyaca yönelik tasarlanmış ürün ve sistem gerektiren projeler için özelleştirilmiş çözümler sunabilmektedir. Mühendislerimizin uzmanlık seviyesi, makine parkımızın yüksek entegrasyonu ve yüksek teknolojimiz sayesinde üretim süreçlerimizin uyarlanabilirliği ile proje bazlı nitelikli ve inovatif yaklaşımlar yapmaktadır.

### Innovation

Our innovation and improvement centered Design Center offers customized solutions that specifically designed for project's product and system requirements. With the expertise of engineering team, high integration of machinery park with high technology and the adaptability of our production processes, Kasso offers project-based, qualified and innovative approaches.



**Uygulama / Application**

Cephe / Facade

**Ürün / Product**Ø10mm delikli metal (ara değişken  
düz sıra) / Ø10mm perforated metal  
(intermediate straight row)**Malzeme / Material**

Alüminyum / Aluminum

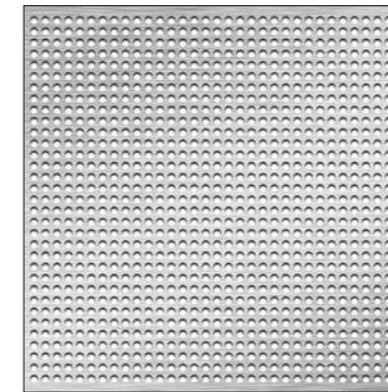
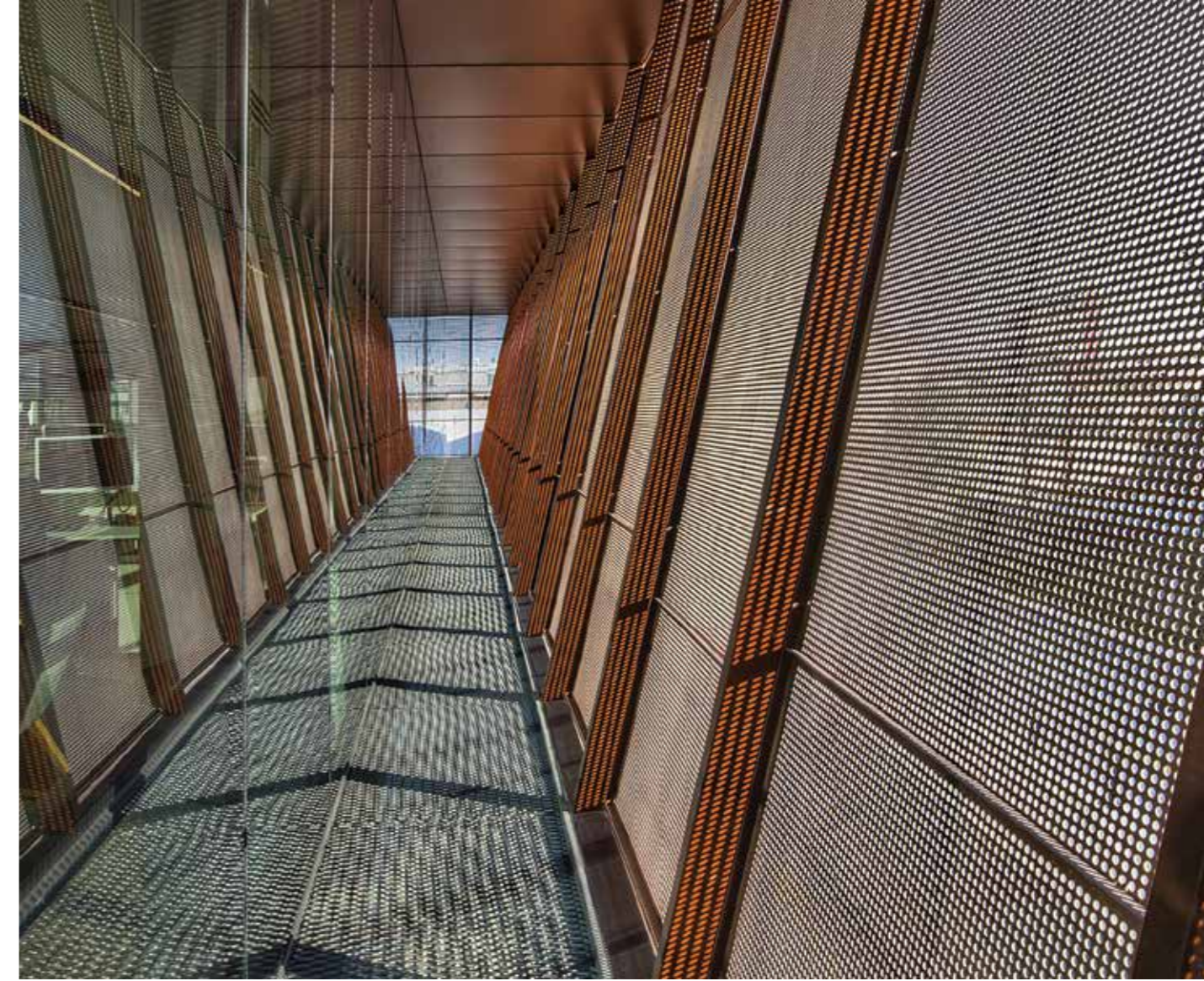
**Yüzey / Surface**Elektrostatik toz boya  
Electrostatic powder coating

# İZMİR ALLIANZ KAMPÜS

## İZMİR ALLIANZ CAMPUS

**Yer / Location** İzmir, Türkiye**Tarih / Date** 2018**Mimar / Architect** Swanke Hayden Connell Architects**Tip / Type** Ofis / Office



**Uygulama / Application**

Cephe / Facade

**Ürün / Product**

Ø10-D14mm delikli metal

Ø10-P14mm perforated metal

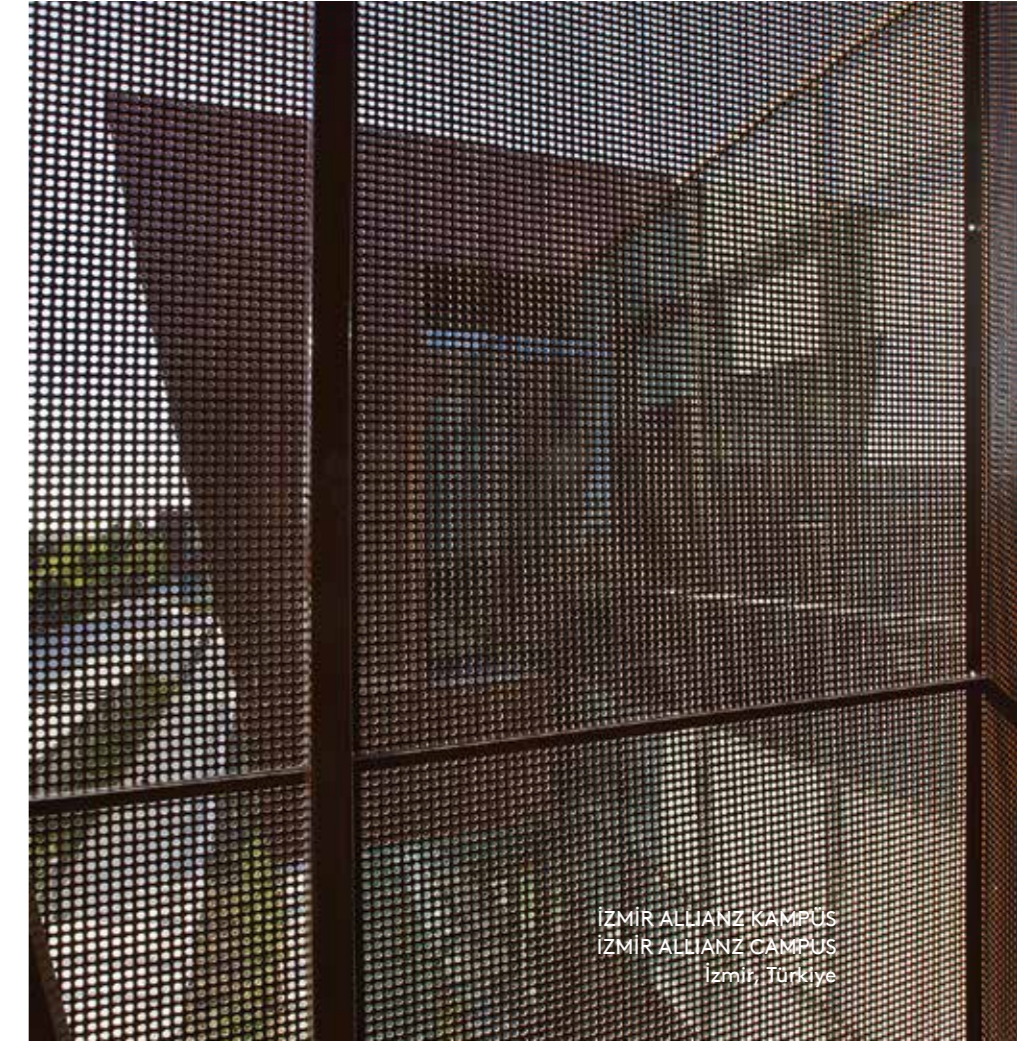
**Malzeme / Material**

Alüminyum / Aluminum

**Yüzey / Surface**

Elektrostatik toz boya

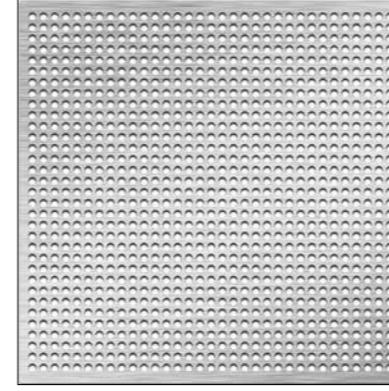
Electrostatic powder coating







İZMİR ALLIANZ KAMPÜS  
İZMİR ALLIANZ CAMPUS  
İzmir, Türkiye



#### Uygulama / Application

Korkuluk / Railing

#### Ürün / Product

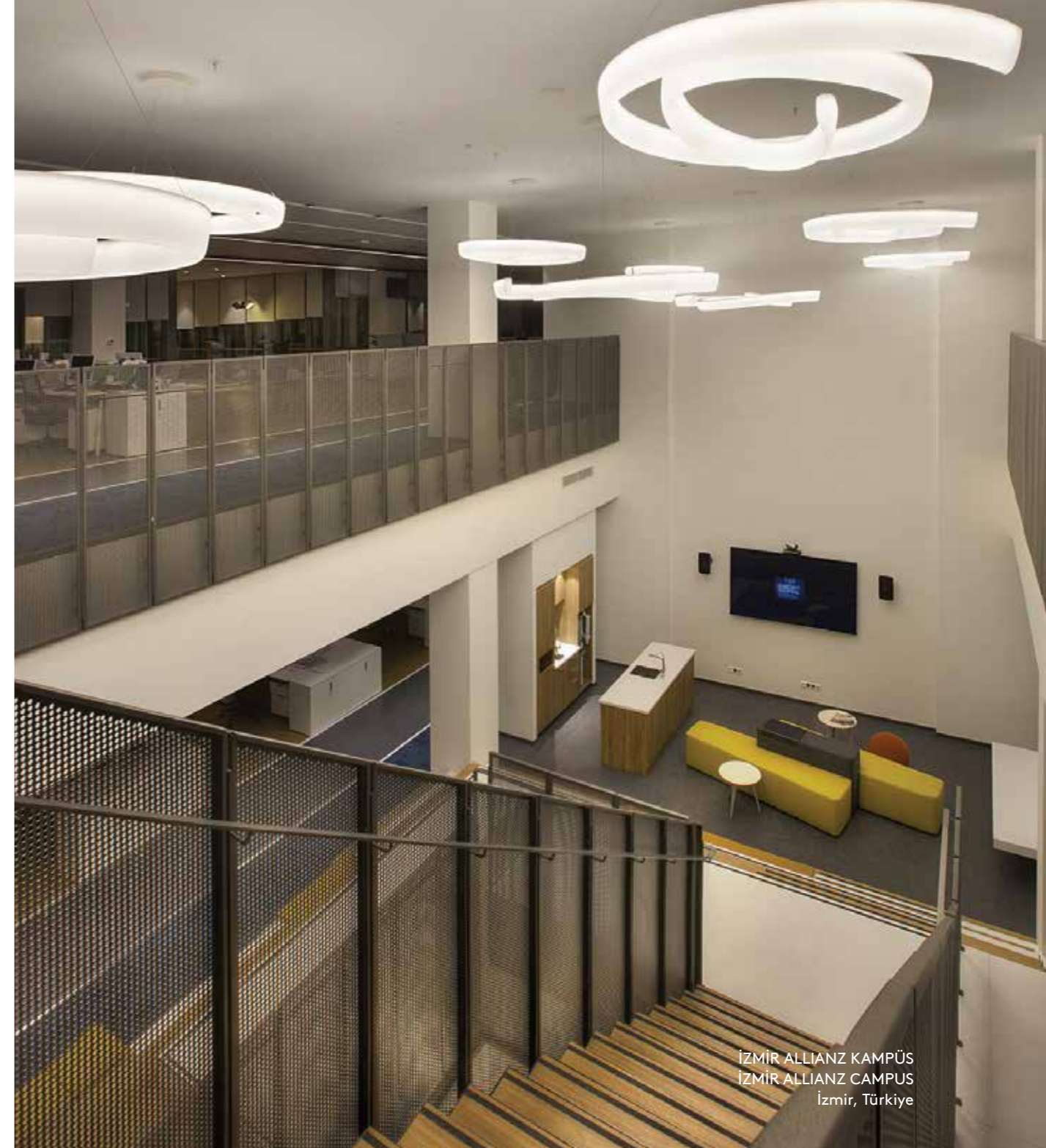
Ø10-D14mmmm delikli metal  
Ø10-P14mmmm perforated metal

#### Malzeme / Material

Alüminyum / Aluminum

#### Yüzey / Surface

Elektrostatik toz boya  
Electrostatic powder coating



İZMİR ALLIANZ KAMPÜS  
İZMİR ALLIANZ CAMPUS  
İzmir, Türkiye

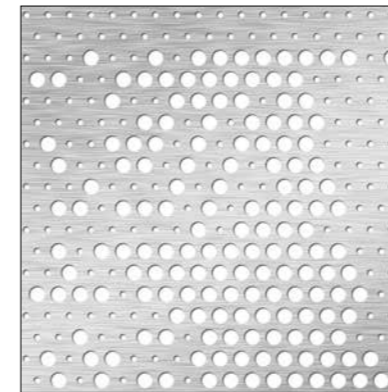


## 360 OFFICE

<b>Yer / Location</b>	İstanbul, Türkiye
<b>Tarih / Date</b>	2018
<b>Mimar / Architect</b>	OA+ Design Studio
<b>Tip / Type</b>	Ofis / Office



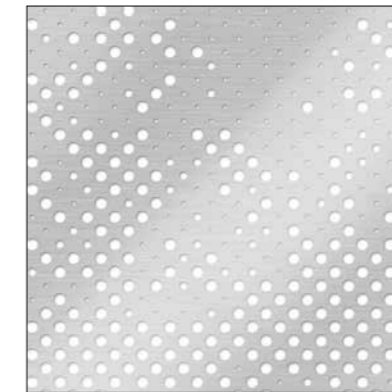


360 OFFICE  
İstanbul, Türkiye**Uygulama / Application**

Cephe / Facade

**Ürün / Product**Ø20mm, Ø8mm multiperfore metal  
Ø20mm, Ø8mm multiperforated metal**Malzeme / Material**

Alüminyum / Aluminum

**Yüze / Surface**Elektrostatik toz boya  
Electrostatic powder coating**Uygulama / Application**

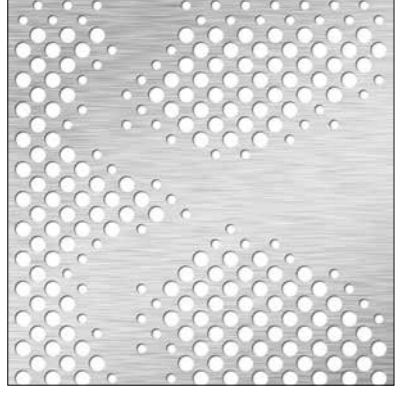
Asma tavan / Suspended ceiling

**Ürün / Product**Ø5mm, Ø10mm Ø15mm  
multiperfore metal  
Ø5mm, Ø10mm Ø15mm  
multiperforated metal**Malzeme / Material**

Alüminyum / Aluminum

**Yüze / Surface**Elektrostatik toz boya  
Electrostatic powder coating360 OFFICE  
İstanbul, Türkiye





**Uygulama / Application**  
Cephe / Facade

**Ürün / Product**  
Ø20, Ø12mm multiperfore  
Ø20, Ø12mm multiperforated metal

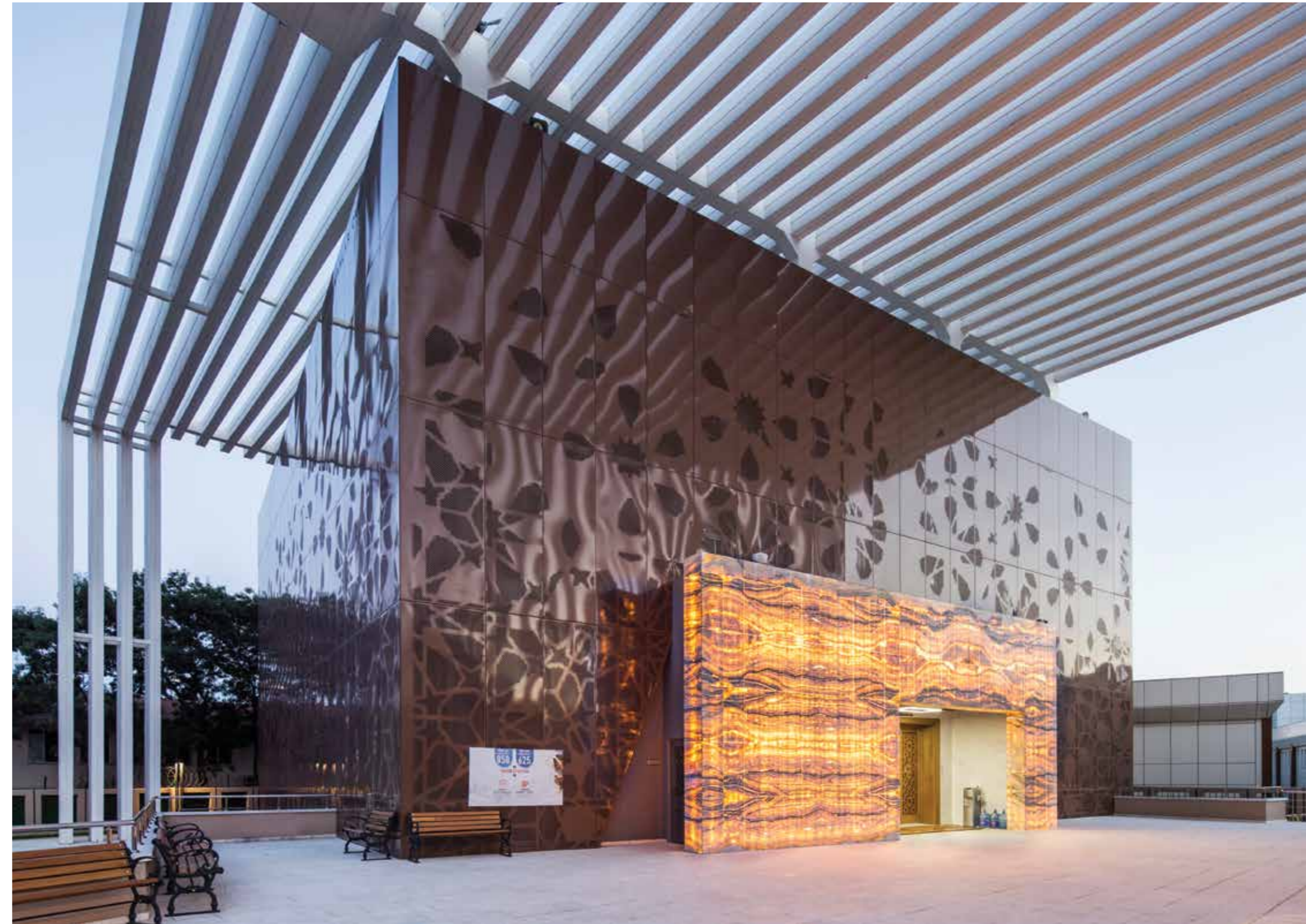
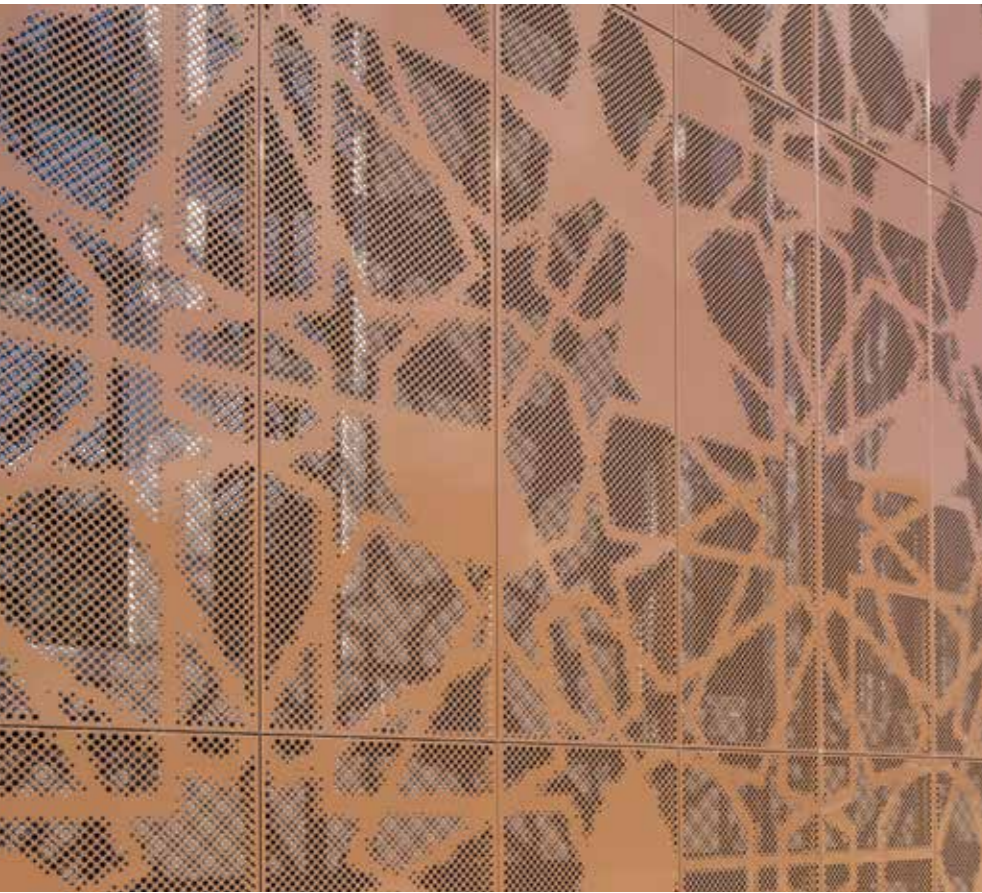
**Malzeme / Material**  
Alüminyum / Aluminum

**Yüzey / Surface**  
Elektrostatik toz boya  
Electrostatic powder coating

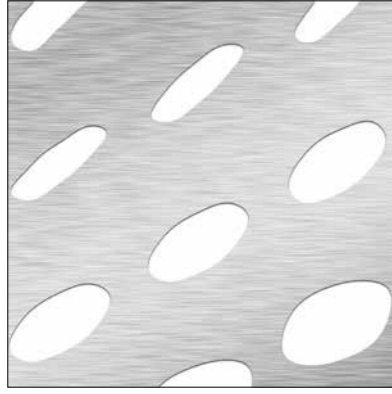
# KAHRAMANLAR CAMİİ

## KAHRAMANLAR MOSQUE

<b>Yer / Location</b>	İstanbul, Türkiye
<b>Tarih / Date</b>	2018
<b>Mimar / Architect</b>	Apak Architects
<b>Tip / Type</b>	İbadet / Place of Worship







**Uygulama / Application**  
Cephe / Facade

**Ürün / Product**  
Desen kesim / Pattern cut

**Malzeme / Material**  
Alüminyum / Aluminum

**Yüzey / Surface**  
Elektrostatik toz boya  
Electrostatic powder coating

# FOLKART VEGA SATIŞ OFİSİ

## FOLKART VEGA SALES OFFICE

**Yer / Location** İzmir, Türkiye

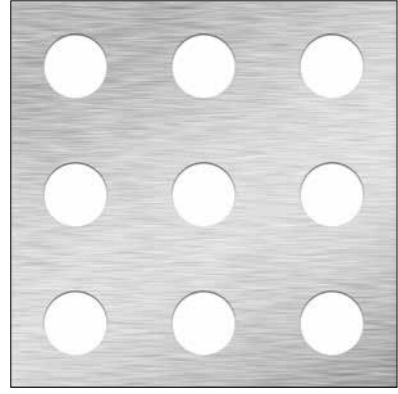
**Tarih / Date** 2018

**Mimar / Architect** Buro Normal

**Tip / Type** Ofis / Office







**Uygulama / Application**

Korkuluk / Railing

**Ürün / Product**

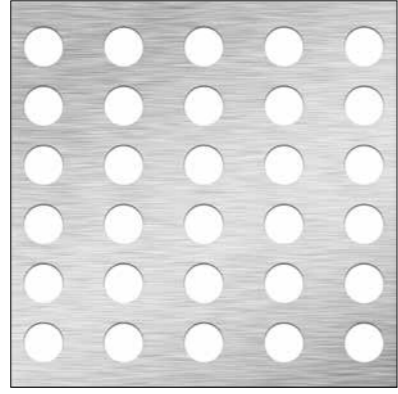
Ø80mm delikli metal  
Ø80mm perforated metal

**Malzeme / Material**

Alüminyum / Aluminum

**Yüzey / Surface**

Elektrostatik toz boya  
Electrostatic powder coating



**Uygulama / Application**

Korkuluk / Railing

**Ürün / Product**

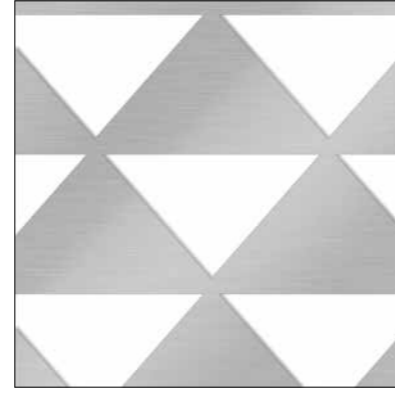
Ø50mm delikli metal  
Ø50mm perforated metal

**Malzeme / Material**

Alüminyum / Aluminum

**Yüzey / Surface**

Elektrostatik toz boya  
Electrostatic powder coating



**Uygulama / Application**

Cephe / Facade

**Ürün / Product**

Desen kesim  
Pattern cut

**Malzeme / Material**

Alüminyum / Aluminum

**Yüzey / Surface**

Elektrostatik toz boya  
Electrostatic powder coating

## SELÇUKLU VADI EVLERİ SELÇUKLU VADI RESIDENTIAL

**Yer / Location** İstanbul, Türkiye

**Tarih / Date** 2018

**Mimar / Architect** Tago Architects

**Tip / Type** Konut / Residential

**Fotoğraf / Photo** Sena Özfiliz



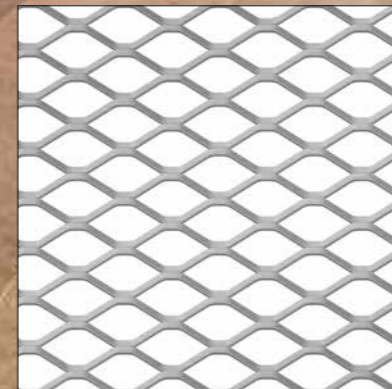
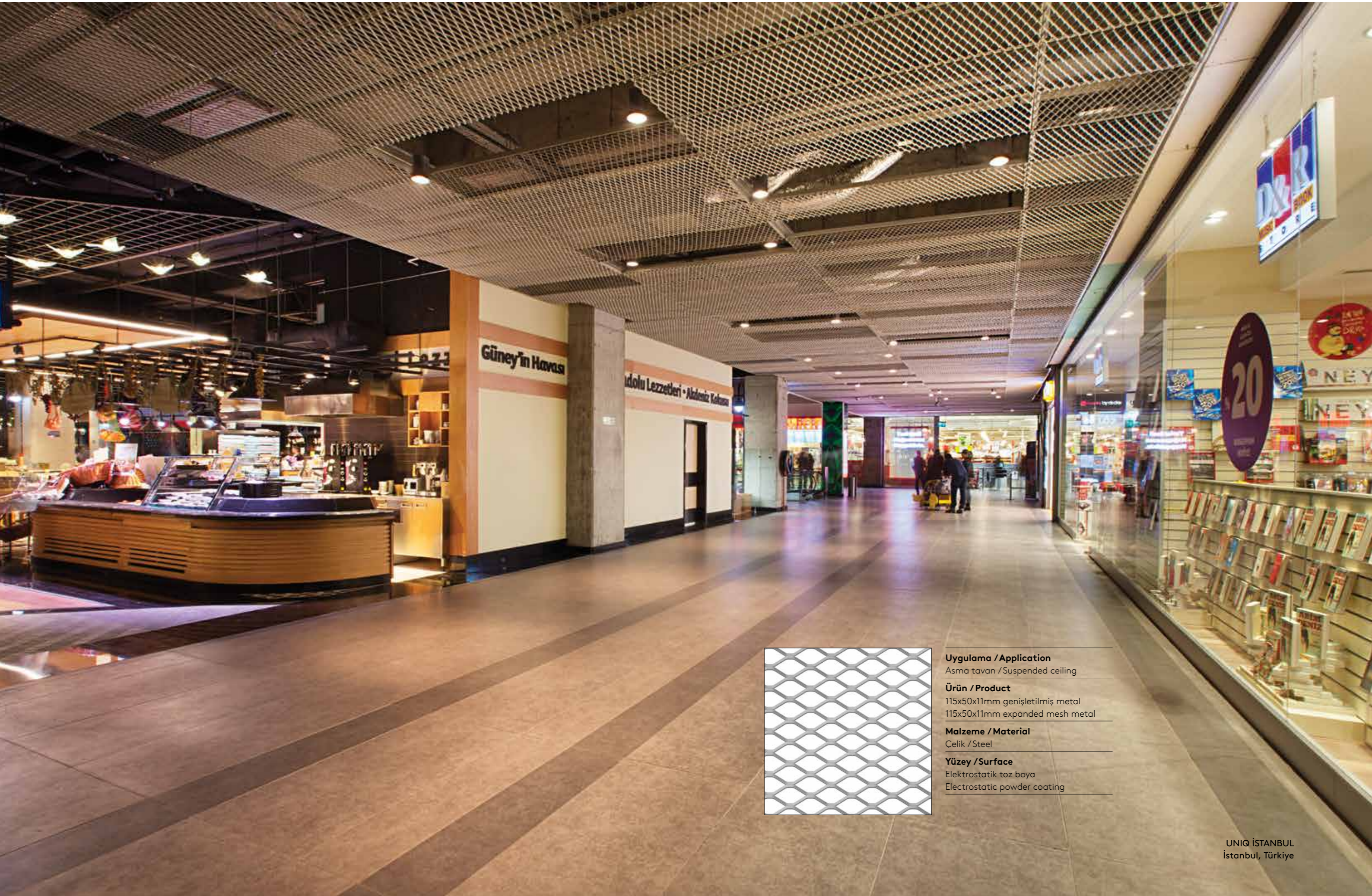


# UNIQ İSTANBUL

<b>Yer / Location</b>	İstanbul, Türkiye
<b>Tarih / Date</b>	2014
<b>Mimar / Architect</b>	ERA Architects
<b>Tip / Type</b>	Karma Kullanım / Mixed Use
<b>Fotoğraf / Photo</b>	Gürkan Akay





**Uygulama / Application**

Asma tavan / Suspended ceiling

**Ürün / Product**

115x50x11mm genişletilmiş metal  
115x50x11mm expanded mesh metal

**Malzeme / Material**

Çelik / Steel

**Yüzey / Surface**

Elektrostatik toz boya  
Electrostatic powder coating



## REAL MERTER

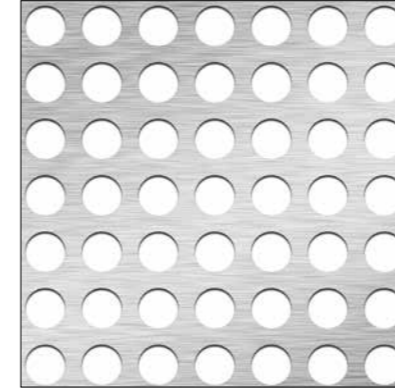
**Yer / Location** İstanbul, Turkey

**Tarih / Date** 2017

**Mimar / Architect** Tago Architects

**Tip / Type** Ofis / Office, Konut / Residential

**Fotoğraf / Photo** Gürkan Akay



**Uygulama / Application**

Dış Alın Kaplama  
Exterior Facade Lining

**Ürün / Product**

Ø50mm delikli metal  
Ø50mm perforated metal

**Malzeme / Material**

Alüminyum / Aluminum

**Yüzey / Surface**

Elektrostatik toz boya  
Electrostatic powder coating





# TÜRKİYE UÇUŞ EĞİTİM MERKEZİ

## TURKISH FLIGHT TRAINING CENTER

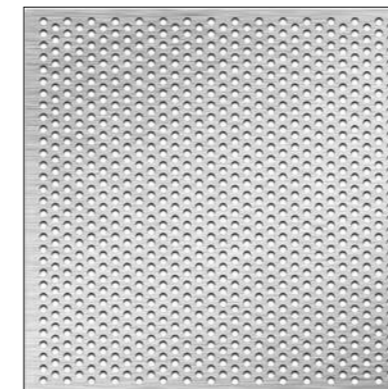
<b>Yer / Location</b>	İstanbul, Türkiye
<b>Tarih / Date</b>	2016
<b>Mimar / Architect</b>	Tago Architects
<b>Tip / Type</b>	Eğitim / Education
<b>Fotoğraf / Photo</b>	Altkat Architectural Photograph







TÜRKİYE UÇUŞ EĞİTİM MERKEZİ  
TURKISH FLIGHT TRAINING CENTER  
İstanbul, Türkiye



#### Uygulama / Application

Cephe / Facade

#### Ürün / Product

Ø10mm delikli metal  
Ø10mm perforated metal

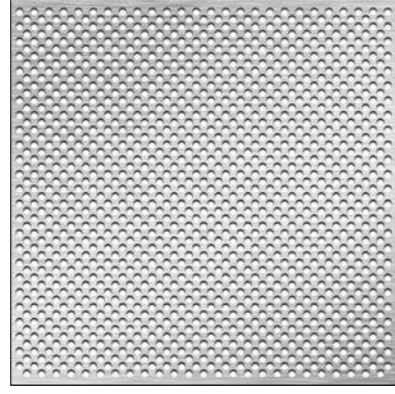
#### Malzeme / Material

Alüminyum / Aluminum

#### Yüzey / Surface

Elektrostatik toz boya  
Electrostatic powder coating





**Uygulama / Application**  
Cephe / Facade

**Ürün / Product**  
Ø10mm delikli metal  
Ø10mm perforated metal

**Malzeme / Material**  
Alüminyum / Aluminum

**Yüzey / Surface**  
Elektrostatik toz boya  
Electrostatic powder coating

# İZMİR JEOTERMAL HİZMET BİNASI

## İZMİR GEOTHERMAL SERVICE BUILDING

**Yer / Location** İzmir, Türkiye

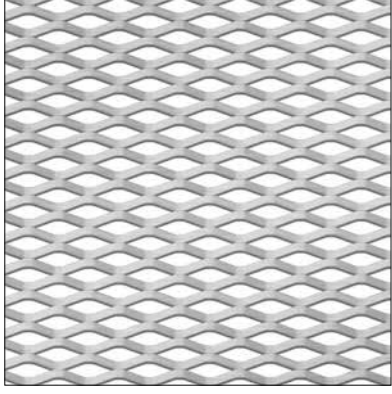
**Tarih / Date** 2018

**Mimar / Architect** Mert Uslu Architects

**Tip / Type** Kamu / Public





**Uygulama / Application**

Asma tavan / Suspended ceiling

**Ürün / Product**

75x25x11mm genişletilmiş metal

75x25x11mm expanded mesh metal

**Malzeme / Material**

Alüminyum / Aluminum

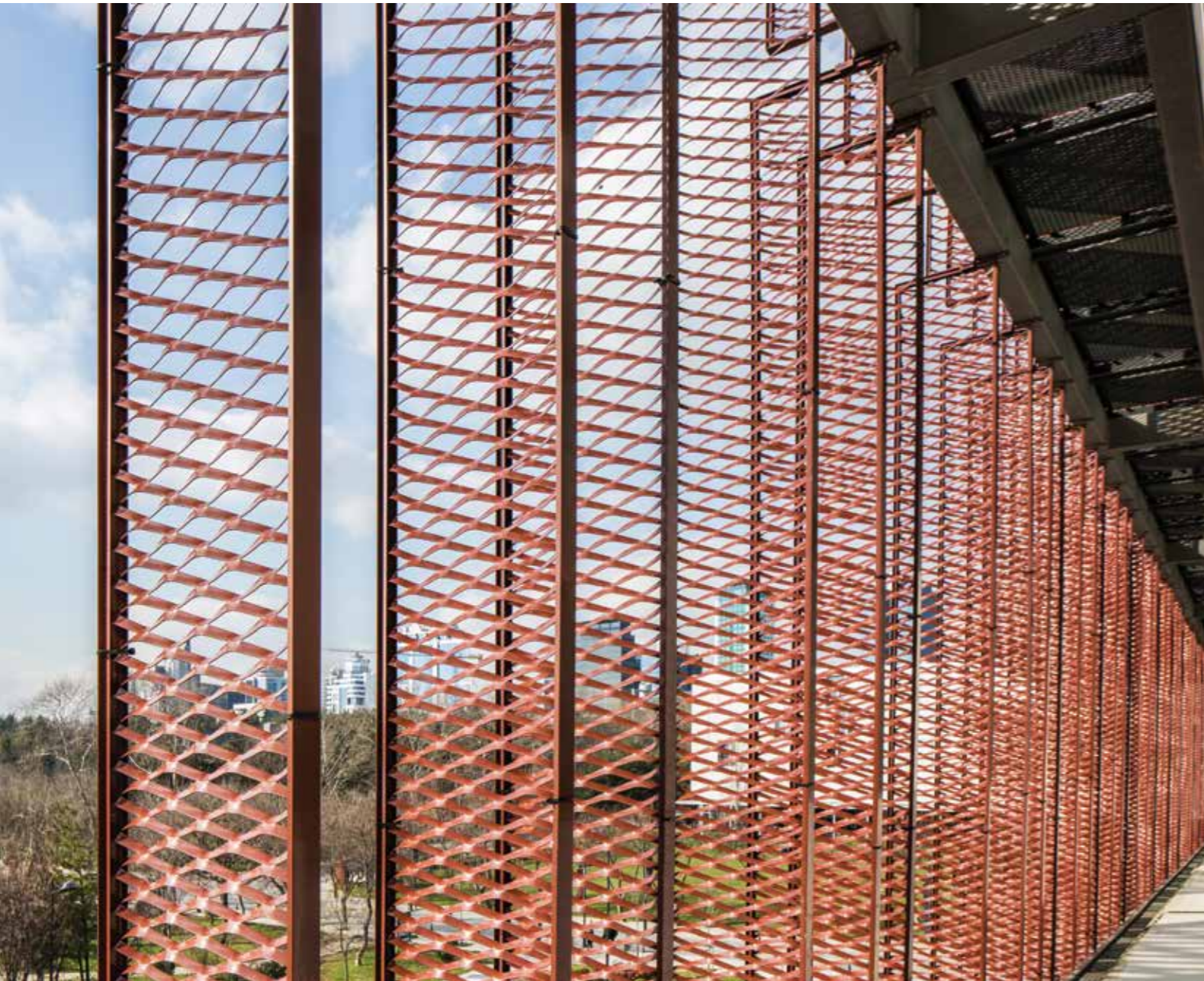
**Yüzey / Surface**

Elektrostatik toz boya

Electrostatic powder coating

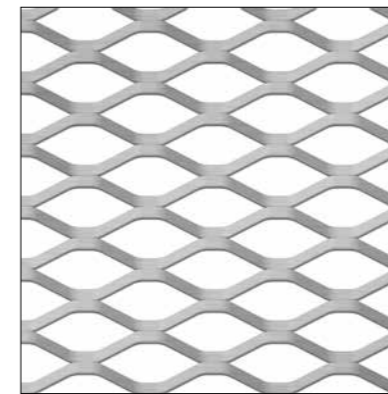
İZMİR JEOTERMAL HİZMET BİNASI  
İZMİR GEOTHERMAL SERVICE BUILDING  
İstanbul, TürkiyeİZMİR JEOTERMAL HİZMET BİNASI  
İZMİR GEOTHERMAL SERVICE BUILDING  
İstanbul, Türkiye





# İSTANBUL TEKNİK ÜNİVERSİTESİ / ELEKTRİK ELEKTRONİK FAKÜLTESİ İSTANBUL TECHNICAL UNIVERSITY / ELECTRIC ELECTRONIC FACULTY

<b>Yer / Location</b>	İstanbul, Türkiye
<b>Tarih / Date</b>	2014
<b>Mimar / Architect</b>	Ulaş Architecture
<b>Tip / Type</b>	Eğitim / Education
<b>Fotoğraf / Photo</b>	Altkat Architectural Photography



**Uygulama / Application**  
Cephe / Facade

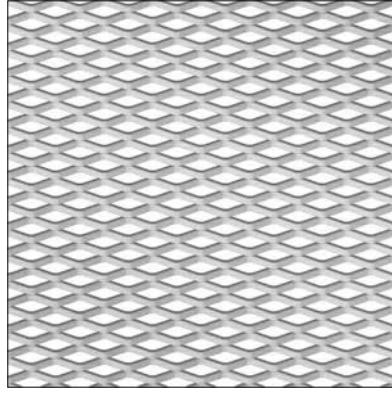
**Ürün / Product**  
160x60x20mm genişletilmiş metal  
160x60x20mm expanded mesh metal

**Malzeme / Material**  
Alüminyum / Aluminum

**Yüzey / Surface**  
Elektrostatik toz boya  
Electrostatic powder coating





**Uygulama / Application**

Asma tavan / Suspended ceiling

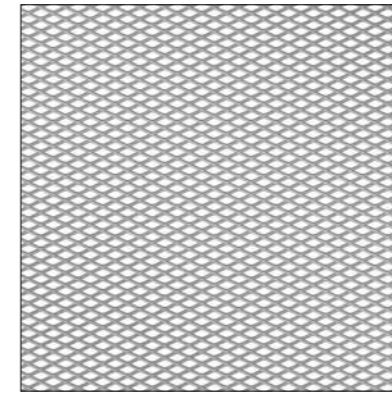
**Ürün / Product**60x20x9mm genişletilmiş metal  
60x20x9mm expanded mesh metal**Malzeme / Material**

Alüminyum / Aluminum

**Yüzey / Surface**Elektrostatik toz boya  
Electrostatic powder coating

# ABDULLAH GÜL ÜNİVERSİTESİ

## ABDULLAH GÜL UNIVERSITY

**Yer / Location** Kayseri, Türkiye**Tarih / Date** 2014**Mimar / Architect** (EAA) - Emre Arolat Architects**Tip / Type** Eğitim / Education**Uygulama / Application**Asma tavan, Duvar  
Suspended ceiling, Wall**Ürün / Product**30x15x2.5mm genişletilmiş metal  
30x15x2.5mm expanded mesh metal**Malzeme / Material**

Alüminyum / Aluminum

**Yüzey / Surface**Elektrostatik toz boya  
Electrostatic powder coating





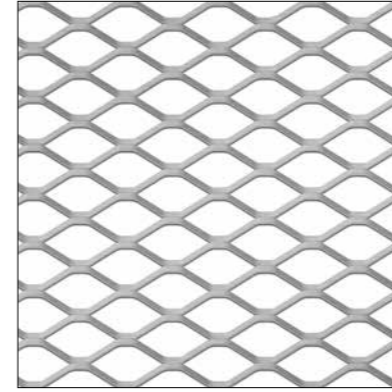
## OFİSHANE

**Yer / Location** İstanbul, Türkiye

**Tarih / Date** 2009

**Mimar / Architect** Tago Architects

**Tip / Type** Ofis / Office



**Uygulama / Application**

Cephe / Facade

**Ürün / Product**

115x50x10mm genişletilmiş metal  
115x50x10mm expanded mesh metal

**Malzeme / Material**

Alüminyum / Aluminum

**Yüzey / Surface**

Elektrostatik toz boya  
Electrostatic powder coating





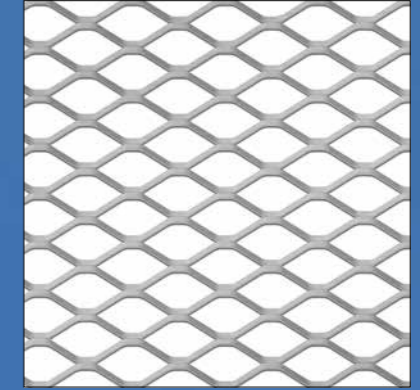
# DUMANKAYA VİZYON

Yer / Location İstanbul, Türkiye

Tarih / Date 2011

Mimar / Architect Tago Architects

Tip / Type Konut / Residential



## Uygulama / Application

Cephe / Facade

## Ürün / Product

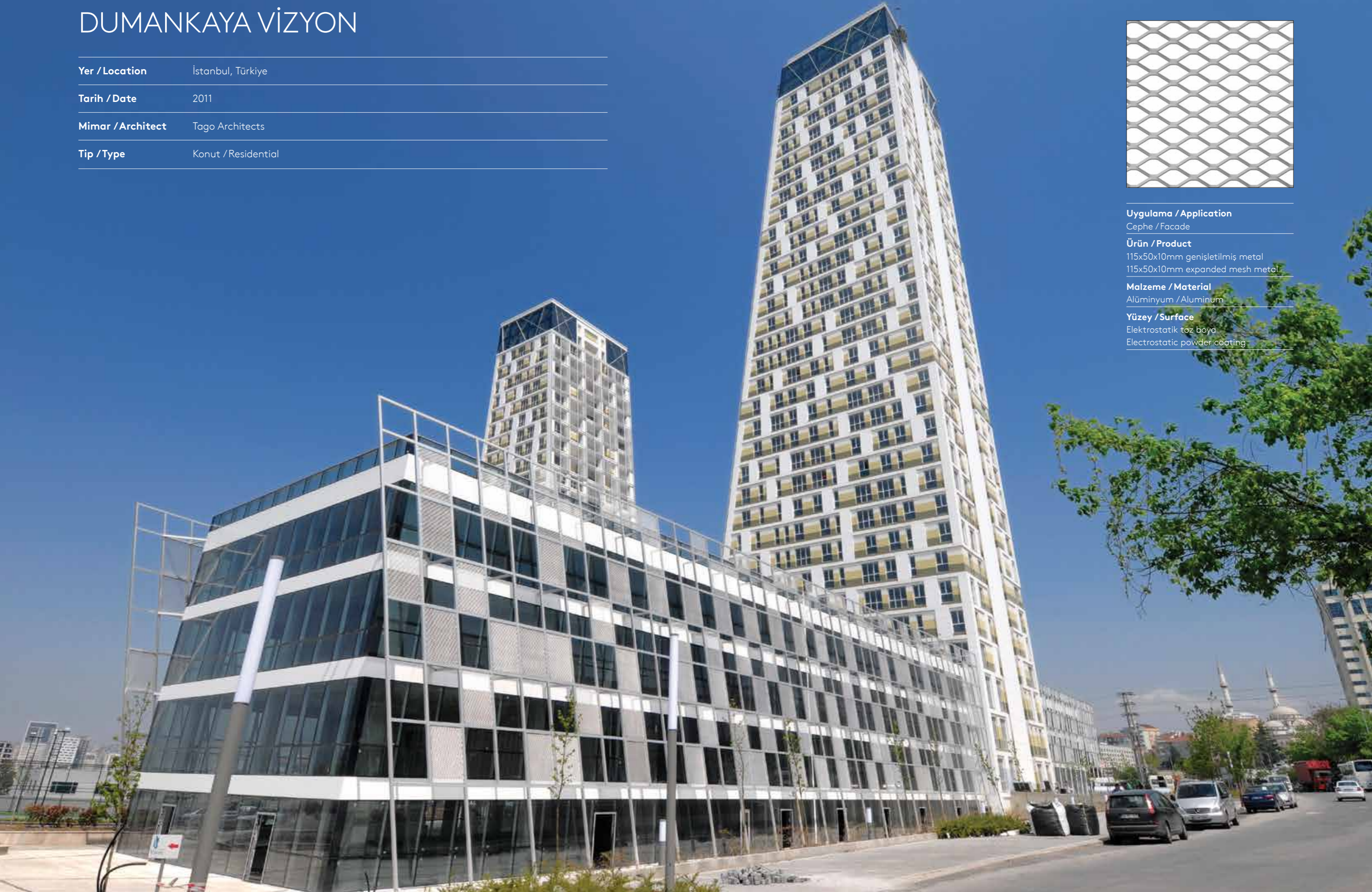
115x50x10mm genişletilmiş metal  
115x50x10mm expanded mesh metal

## Malzeme / Material

Alüminyum / Aluminum

## Yüzey / Surface

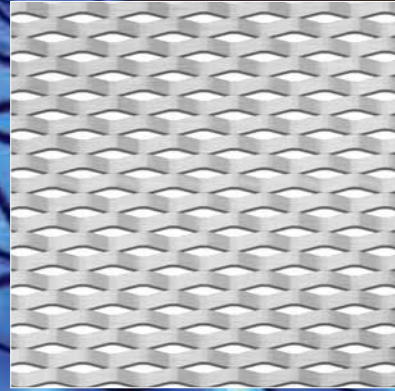
Elektrostatik toz boya  
Electrostatic powder coating





# OCEAN PLAZA

Yer / Location	Kiev, Ukraine
Tarih / Date	2012
Mimar / Architect	Urban Experts & Leslie Jones Architects
Tip / Type	Alışveriş Merkezi / Shopping Mall



## Uygulama / Application

Saçak altı / Canopy

## Ürün / Product

75x25x16mm genişletilmiş metal

75x25x16mm expanded mesh metal

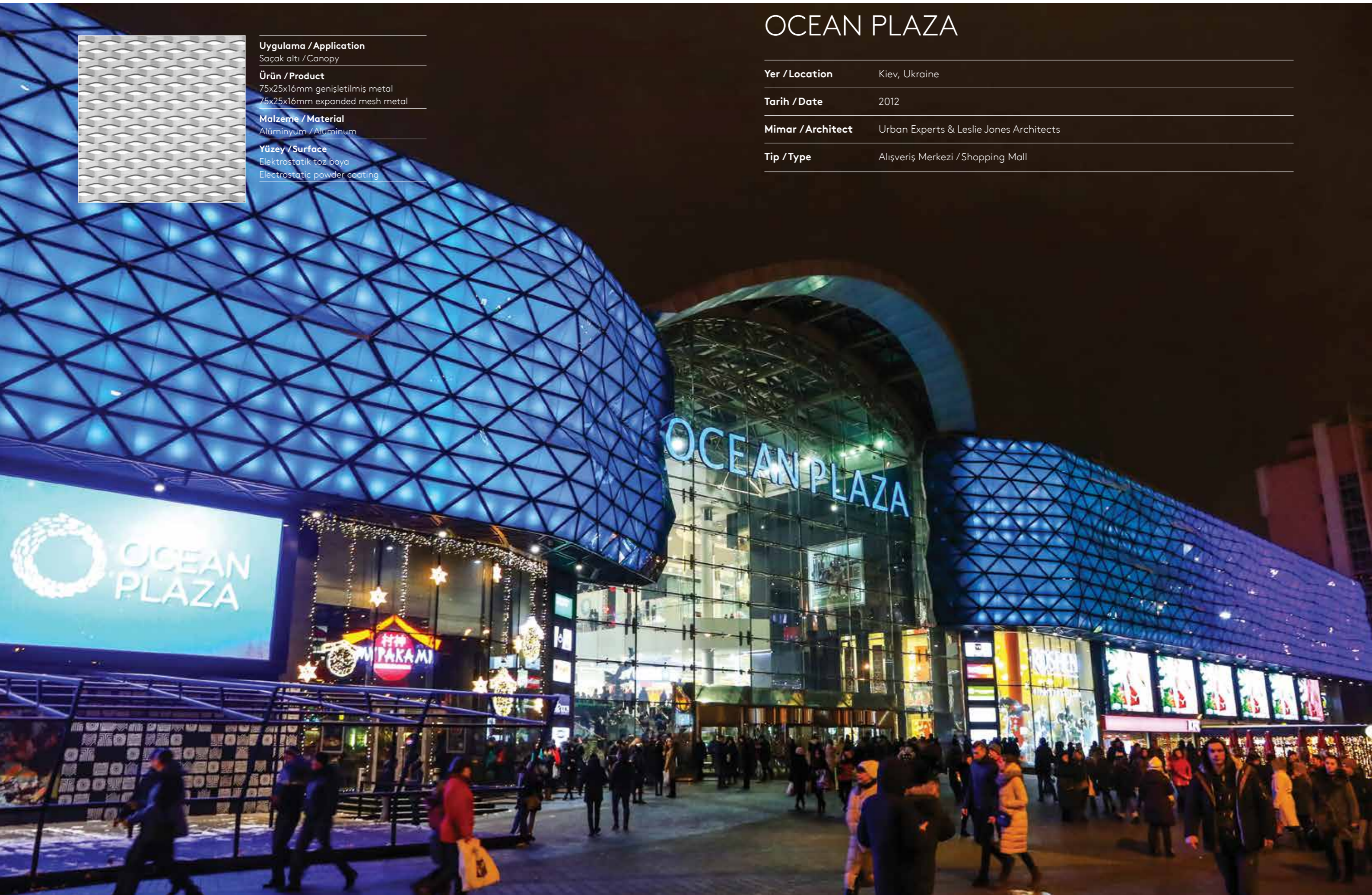
## Malzeme / Material

Alüminyum / Aluminum

## Yüzey / Surface

Elektrostatik toz boya

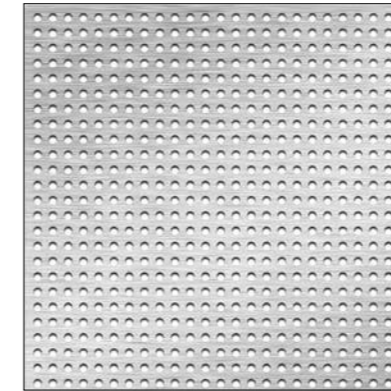
Electrostatic powder coating





# BOMONTIADA BABYLON

<b>Yer / Location</b>	İstanbul, Türkiye
<b>Tarih / Date</b>	2016
<b>Mimar / Architect</b>	Alataş Architects & Consulting
<b>Akustik / Acoustic</b>	Talayman Acoustic
<b>Tip / Type</b>	Eğlence / Entertainment



## Uygulama / Application

Akustik duvar / Acoustic wall

## Ürün / Product

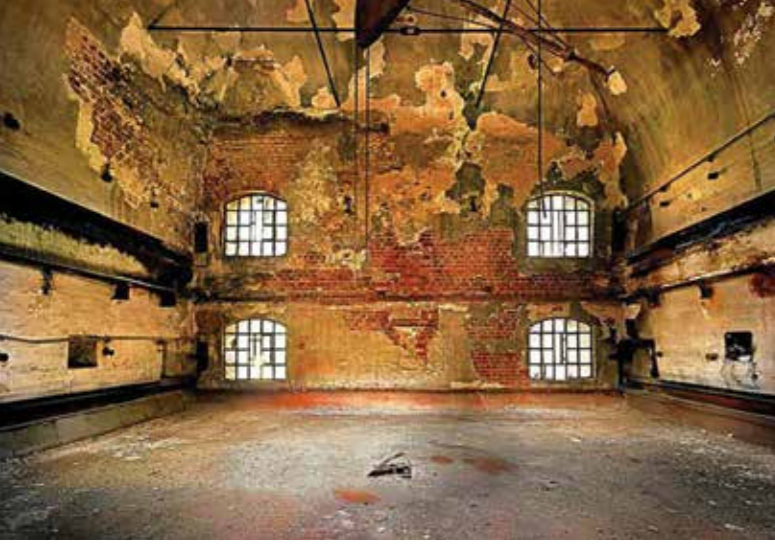
Ø5mm delikli metal  
Ø5mm perforated metal

## Malzeme / Material

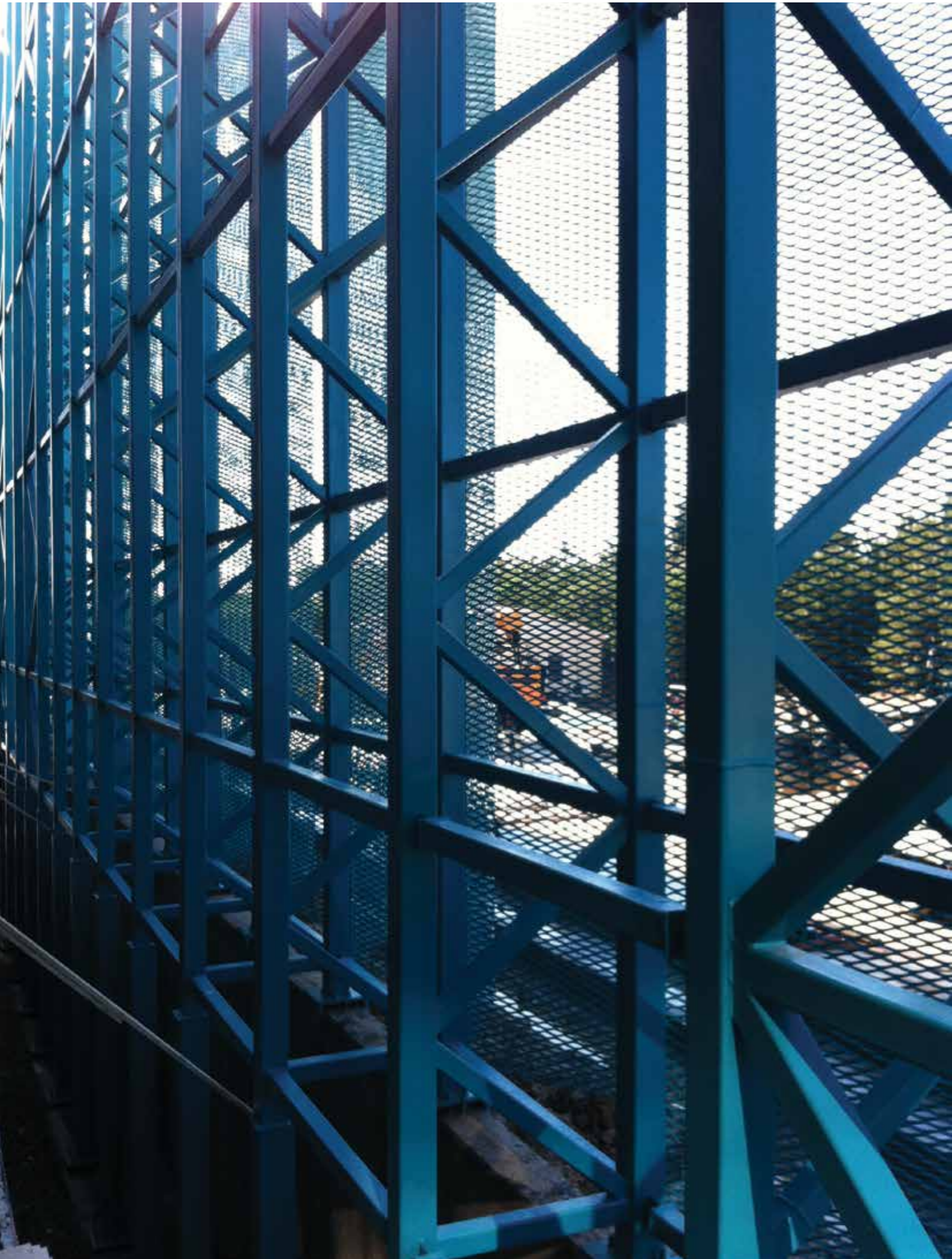
Alüminyum / Aluminum

## Yüzey / Surface

Elektrostatik toz boya  
Electrostatic powder coating



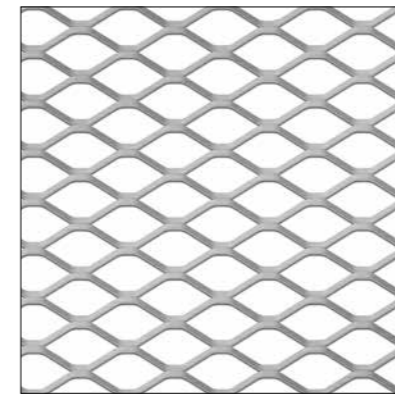




# PHARMACTIVE ÜRETİM TESİSİ

## PHARMACTIVE PRODUCTION FACILITY

<b>Yer / Location</b>	Tekirdağ, Türkiye
<b>Tarih / Date</b>	2012
<b>Mimar / Architect</b>	Nevzat Sayın Architectural Services
<b>Tip / Type</b>	Endüstriyel / Industrial



### Uygulama / Application

Cephe / Facade

### Ürün / Product

115x50x11mm genişletilmiş metal

115x50x11mm expanded mesh metal

### Malzeme / Material

Alüminyum / Aluminum

### Yüzey / Surface

Elektrostatik toz boya

Electrostatic powder coating







## ERKE GREEN ACADEMY

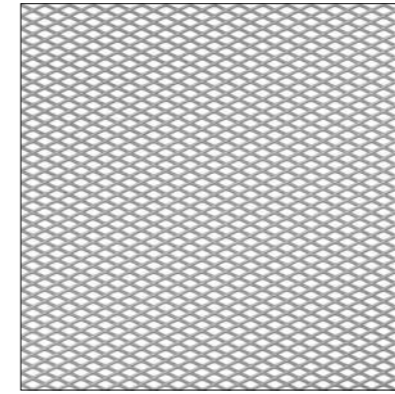
**Yer / Location** İstanbul, Türkiye

**Tarih / Date** 2013

**Mimar / Architect** Deer Architects

**Tip / Type** Ofis / Office

**Ödül / Award** Sign of the City Awards



### Uygulama / Application

Asma tavan / Suspended ceiling

### Ürün / Product

30x10x3mm genişletilmiş metal

30x10x3mm expanded mesh metal

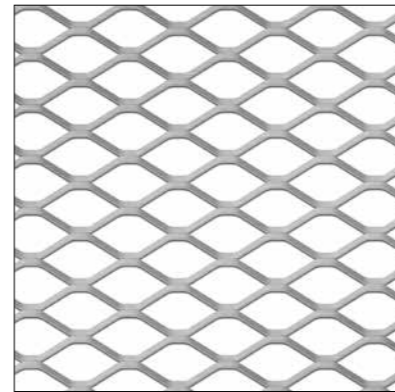
### Malzeme / Material

Çelik / Steel

### Yüzey / Surface

Elektrostatik toz boya

Electrostatic powder coating



### Uygulama / Application

Cephe / Facade

### Ürün / Product

115x50x11mm genişletilmiş metal

115x50x11mm expanded mesh metal

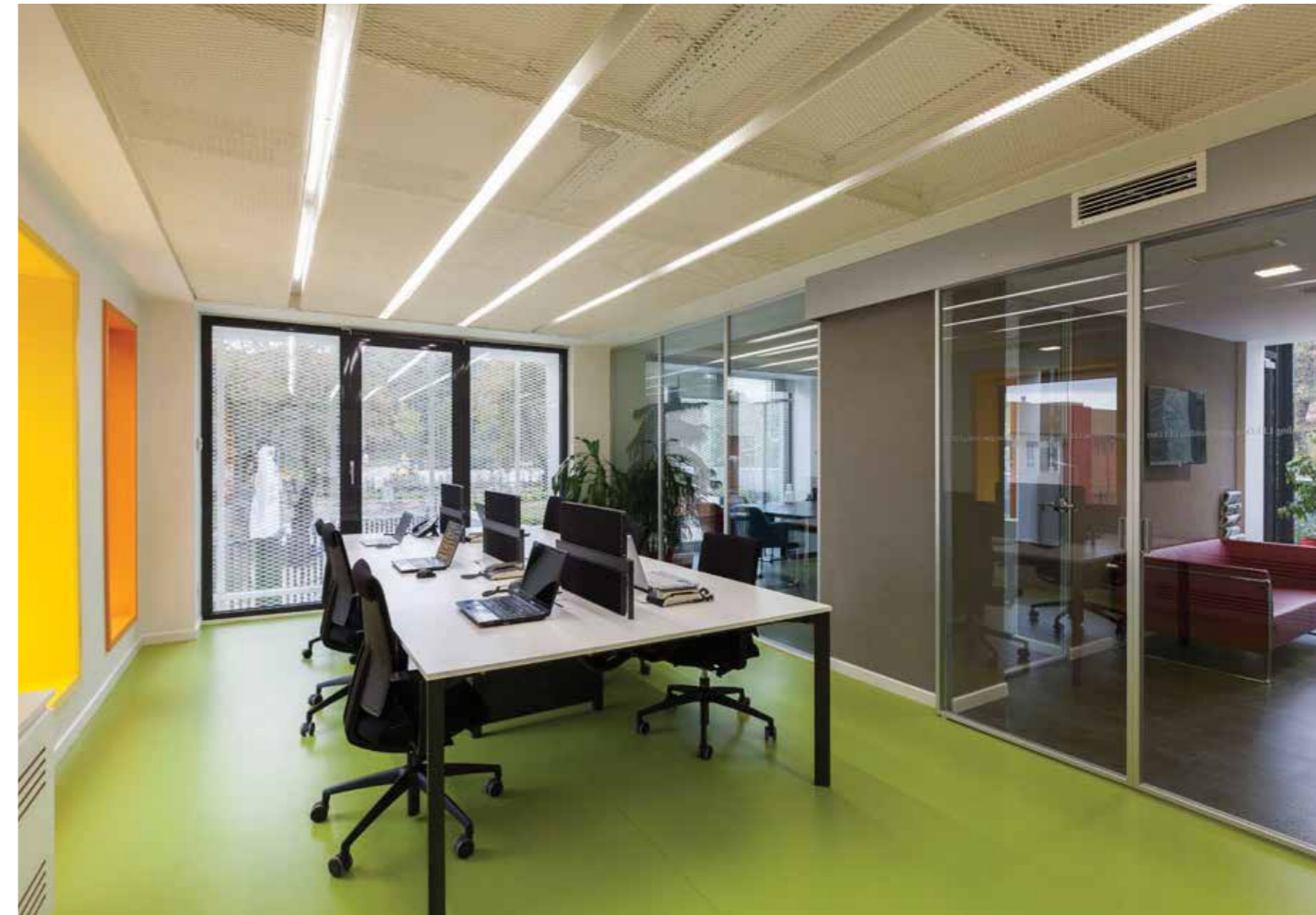
### Malzeme / Material

Alüminyum / Aluminum

### Yüzey / Surface

Elektrostatik toz boya

Electrostatic powder coating





# BODRUM SUALTI ARKEOLOJİ MÜZESİ

## BODRUM UNDERWATER ARCHAEOLOGY MUSEUM

**Yer / Location** Bodrum, Türkiye

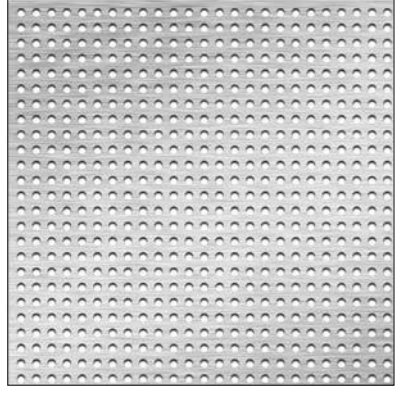
**Tarih / Date** 2019

**Mimar / Architect** ANB Architects

**Tip / Type** Kamusal / Public



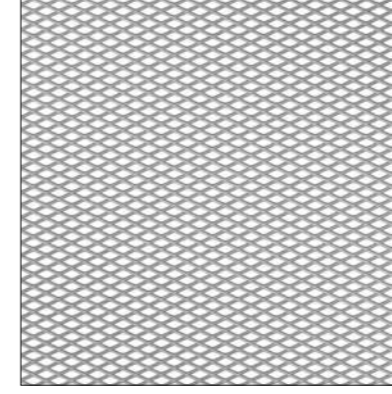


**Uygulama / Application**

Cephe / Facade

**Ürün / Product**Ø5mm delikli metal  
Ø5mm perforated metal**Malzeme / Material**

Alüminyum / Aluminum

**Yüzey / Surface**Elektrostatik toz boya  
Electrostatic powder coating**Uygulama / Application**

Cephe / Facade

**Ürün / Product**30x10X3mm genişletilmiş metal  
30x10X3mm expanded mesh metal**Malzeme / Material**

Alüminyum / Aluminum

**Yüzey / Surface**Elektrostatik toz boya  
Electrostatic powder coating



# AHLATÇI GENEL MÜDÜRLÜK

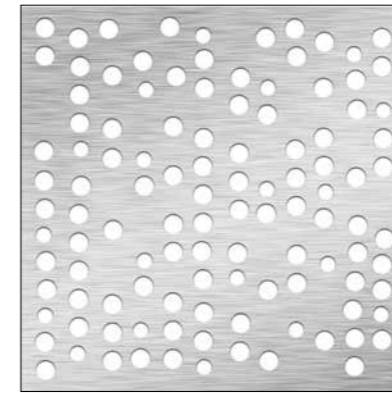
## AHLATÇI HEADQUARTERS

**Yer / Location** Çorum, Türkiye

**Tarih / Date** 2015

**Mimar / Architect** Proaktif Project

**Tip / Type** Ofis / Office



**Uygulama / Application**

Cephe / Facade

**Ürün / Product**

Ø20-25mm multiperfore metal

Ø20-25mm multiperforated metal

**Malzeme / Material**

Alüminyum / Aluminum

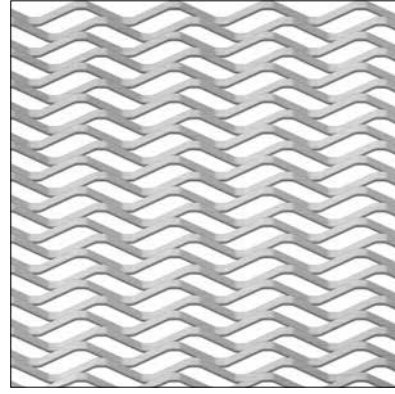
**Yüzey / Surface**

Elektrostatik toz boya

Electrostatic powder coating





**Uygulama / Application**

Cephe / Facade

**Ürün / Product**

115x50x11mm genişletilmiş metal

115x50x11mm expanded mesh metal

**Malzeme / Material**

Alüminyum / Aluminum

**Yüzey / Surface**

Elektrostatik toz boya

Electrostatic powder coating



# YARIMCA KONUKEVİ

## YARIMCA GUEST HOUSE

**Yer / Location** İzmit, Türkiye**Tarih / Date** 2009**Mimar / Architect** Onur Özsoy Architects**Tip / Type** Konut / Residential





# AC YAPI DORE LIFE SATIŞ OFİSİ

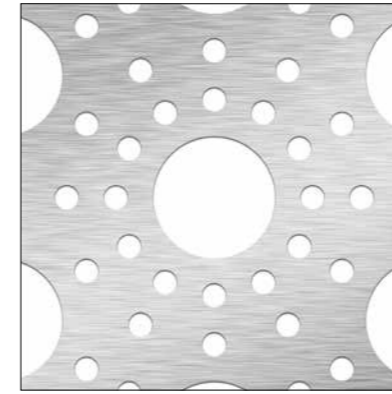
## AC YAPI DORE LIFE SALES OFFICE

Yer / Location İstanbul, Türkiye

Tarih / Date 2015

Mimar / Architect MV Architects

Tip / Type Ofis / Office



### Uygulama / Application

Cephe / Facade

### Ürün / Product

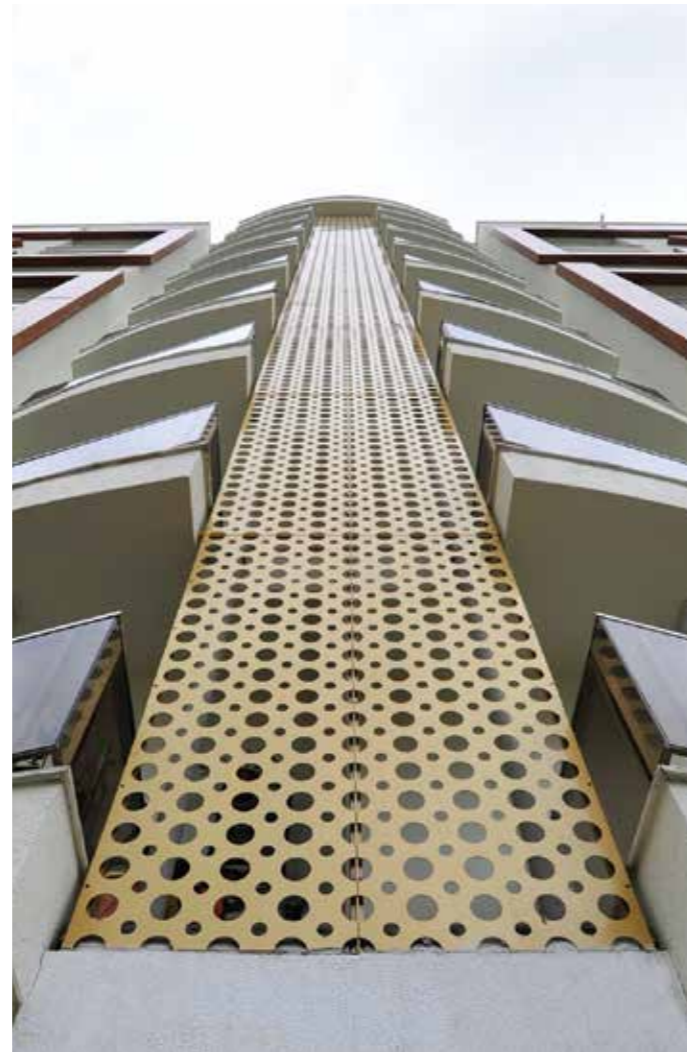
Ø150, Ø30mm multiperfore metal  
Ø150, Ø30mm multiperforated metal

### Malzeme / Material

Alüminyum / Aluminum

### Yüzey / Surface

Gold eloksal / Gold anodizing





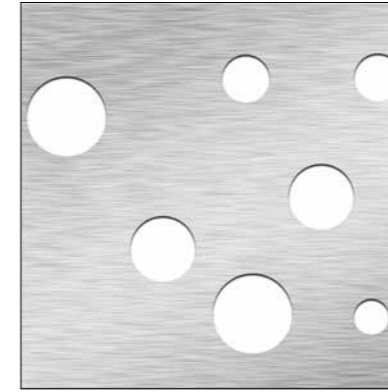
# YENİKAPI ETKİNLİK ÇADIRI YENİKAPI ACTIVITY AREA

**Yer / Location** İstanbul, Türkiye

**Tarih / Date** 2017

**Mimar / Architect** Arima Architects

**Tip / Type** Kamu / Public



**Uygulama / Application**

Cephe / Facade

**Ürün / Product**

Desen kesim / Pattern cut

**Malzeme / Material**

Titanyum çinko / Titanium zinc

**Yüzey / Surface**

Kaplamasız / Mill finish



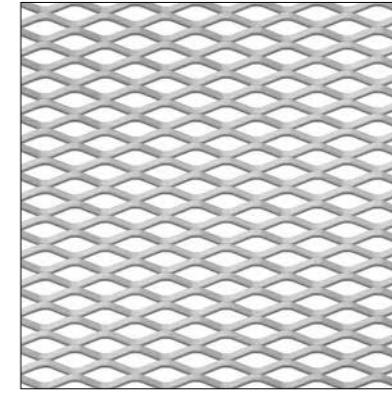




# CASA MOBİLYA

## CASA FURNITURE

<b>Yer / Location</b>	İstanbul, Türkiye
<b>Tarih / Date</b>	2015
<b>Mimar / Architect</b>	Haldun Akalın Design
<b>Tip / Type</b>	Ticari / Commercial



### Uygulama / Application

Cephe / Facade

### Ürün / Product

75x25x9mm genişletilmiş metal  
75x25x9mm expanded mesh metal

### Malzeme / Material

Alüminyum / Aluminum

### Yüzey / Surface

Bronz eloksal / Bronze anodizing



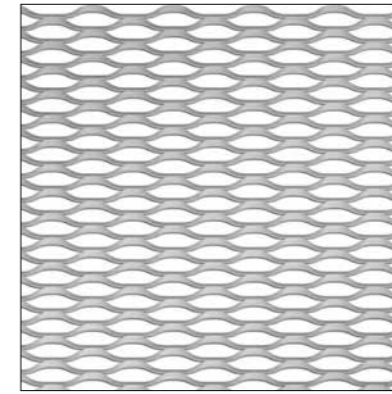


## AGT İSTANBUL OFİS AGT İSTANBUL OFFICE

**Yer / Location** İstanbul, Türkiye

**Tarih / Date** 2018

**Tip / Type** Ofis / Office



**Uygulama / Application**

Cephe / Facade

**Ürün / Product**

110x33x8mm genişletilmiş metal

110x33x8mm expanded mesh metal

**Malzeme / Material**

Alüminyum / Aluminum

**Yüzey / Surface**

Elektrostatik toz boya

Electrostatic powder coating



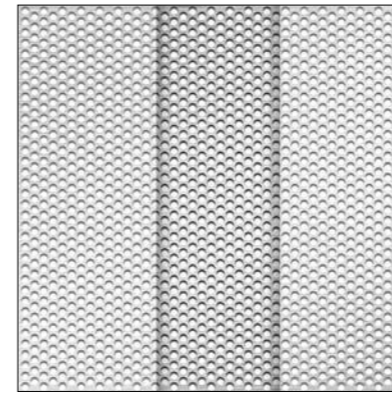




# İBB KAHRAMANLAR KATLI OTOPARK

## İBB KAHRAMANLAR MULTI-STOREY CAR PARK

<b>Yer / Location</b>	İzmir, Türkiye
<b>Tarih / Date</b>	2017
<b>Mimar / Architect</b>	Etüd Projeler Dairesi Başkanlığı Projeler Şube Müdürlüğü
<b>Tip / Type</b>	Ulaşım / Transportation



### Uygulama / Application

Cephe / Facade

### Ürün / Product

Ø10mm delikli metal trapez büküm  
Ø10mm perforated metal trapezoidal bending

### Malzeme / Material

Alüminyum / Aluminum

### Yüzey / Surface

Elektrostatik toz boya  
Electrostatic powder coating







# İBB ALSANCAK KATLI OTOYERK

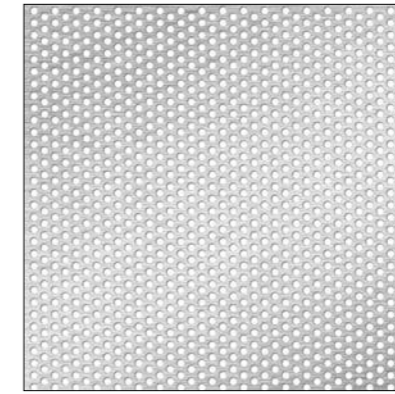
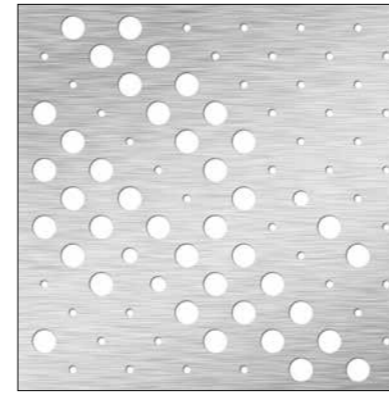
## İBB ALSANCAK MULTI-STOREY CAR PARK

**Yer / Location** İzmir, Türkiye

**Tarih / Date** 2019

**Mimar / Architect** Etüd Projeler Dairesi Başkanlığı Projeler Şube Müdürlüğü

**Tip / Type** Ulaşım / Transportation



**Uygulama / Application**

Cephe / Facade

**Ürün / Product**

Ø30mm, Ø10mm multiperfore metal  
Ø30mm, Ø10mm multiperfore metal

**Malzeme / Material**

Alüminyum / Aluminum

**Yüzey / Surface**

Elektrostatik toz boya  
Electrostatic powder coating

**Uygulama / Application**

Cephe / Facade

**Ürün / Product**

Ø10mm delikli metal  
Ø10mm perforated metal

**Malzeme / Material**

Alüminyum / Aluminum

**Yüzey / Surface**

Elektrostatik toz boya  
Electrostatic powder coating



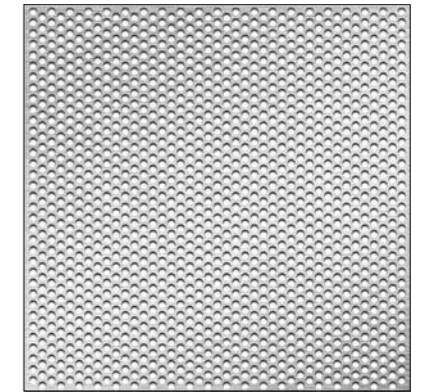
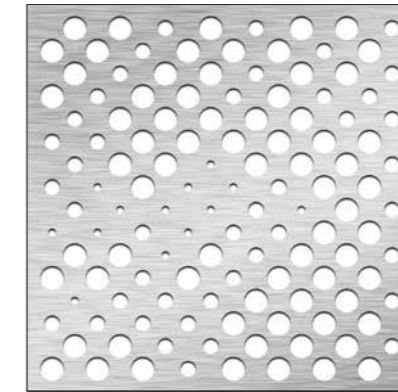




# İBB ALAYBEY KATLI OTOPARKI

## İBB ALAYBEY MULTI-STOREY CAR PARK

<b>Yer / Location</b>	İzmir, Türkiye
<b>Tarih / Date</b>	2017
<b>Mimar / Architect</b>	Etüd Projeler Dairesi Başkanlığı Projeler Şube Müdürlüğü
<b>Tip / Type</b>	Ulaşım / Transportation



**Uygulama / Application**  
Cephe / Facade

**Ürün / Product**  
Ø10mm, Ø20mm, Ø30mm  
multiperfore metal  
Ø10mm, Ø20mm, Ø30mm  
multiperforated metal

**Malzeme / Material**  
Alüminyum / Aluminum

**Yüzey / Surface**  
Elektrostatik toz boya  
Electrostatic powder coating

**Uygulama / Application**  
Cephe / Facade

**Ürün / Product**  
Ø10mm delikli metal  
Ø10mm perforated metal

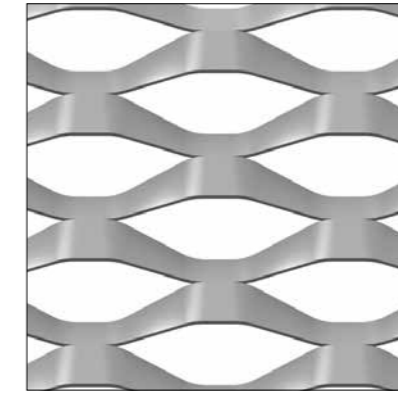
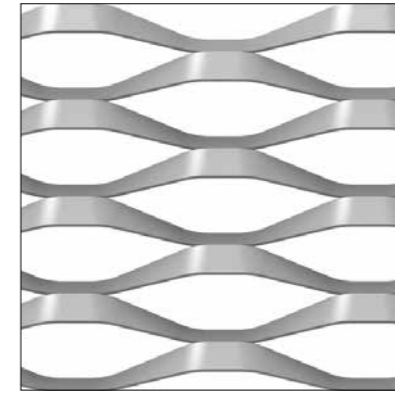
**Malzeme / Material**  
Alüminyum / Aluminum

**Yüzey / Surface**  
Elektrostatik toz boya  
Electrostatic powder coating



## MEGAPOL ÇARŞIKULE

Yer / Location	İzmir, Türkiye
Tarih / Date	2018
Mimar / Architect	Tago Architects, Handan Özcan Karali (Cephe Danışmanı / Facade Consultant)
Tip / Type	Karma Kullanım / Mixed Use



### Uygulama / Application

Cephe / Facade

### Ürün / Product

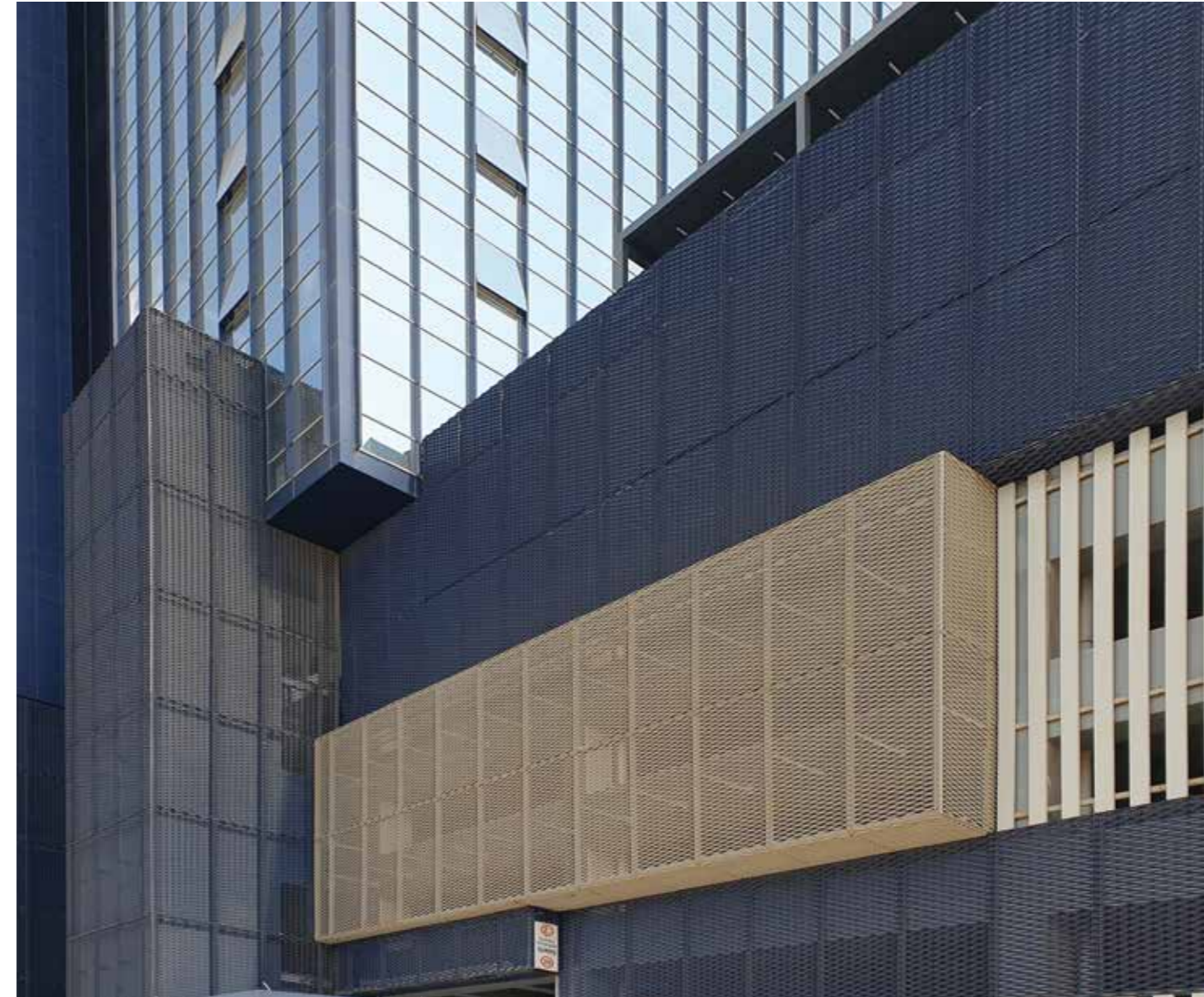
250x105x24mm genişletilmiş metal  
250x105x24mm expanded mesh metal  
250x105x40mm genişletilmiş metal  
250x105x40mm expanded mesh metal

### Malzeme / Material

Alüminyum / Aluminum

### Yüzey / Surface

Elektrostatik toz boya  
Electrostatic powder coating

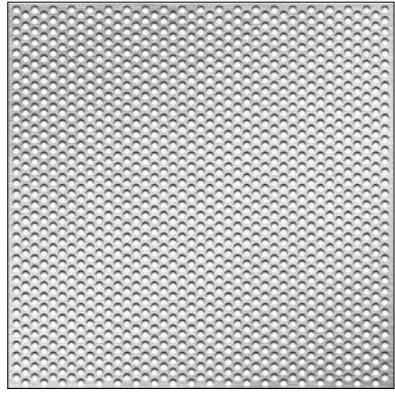




# İBB HAKİMEVLERİ KATLI OTOPARKI

## İBB HAKİMEVLERİ MULTI-STOREY CAR PARK

<b>Yer / Location</b>	İzmir, Türkiye
<b>Tarih / Date</b>	2018
<b>Mimar / Architect</b>	Etüd Projeler Dairesi Başkanlığı Projeler Şube Müdürlüğü
<b>Tip / Type</b>	Ulaşım / Transportation



**Uygulama / Application**  
Cephe / Facade

**Ürün / Product**  
Ø10mm delikli metal  
Ø10mm perforated metal

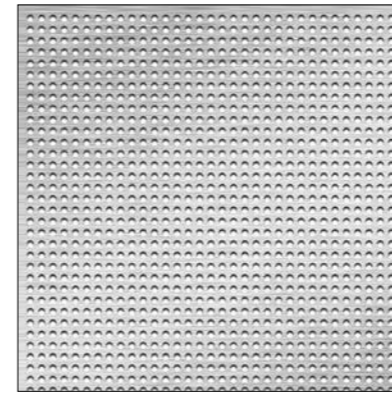
**Malzeme / Material**  
Alüminyum / Aluminum

**Yüzey / Surface**  
Elektrostatik toz boya  
Electrostatic powder coating



# EGE PERLA

<b>Yer / Location</b>	İzmir, Türkiye
<b>Tarih / Date</b>	2016
<b>Mimar / Architect</b>	(EAA) - Emre Arolat Architecture
<b>Tip / Type</b>	Karma Kullanım / Mixed Use



**Uygulama / Application**  
Çatı / Roof

**Ürün / Product**  
Ø5-D8mm delikli metal  
Ø5-P8mm perforated metal

**Malzeme / Material**  
Alüminyum / Aluminium

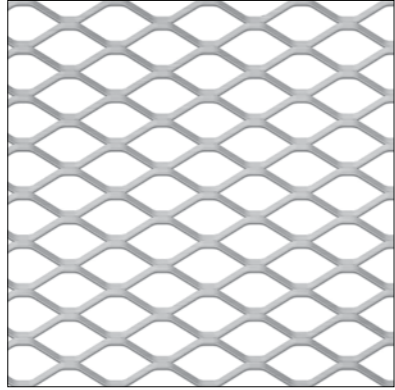
**Yüzey / Surface**  
Elektrostatik Toz Boya  
Electrostatic Powder Coating





# MARMARA FORUM

<b>Yer / Location</b>	İstanbul, Türkiye
<b>Tarih / Date</b>	2011
<b>Mimar / Architect</b>	Tabanlıoğlu Architects
<b>Tip / Type</b>	Karma Kullanım / Mixed Use



#### Uygulama / Application

Cephe / Facade

#### Ürün / Product

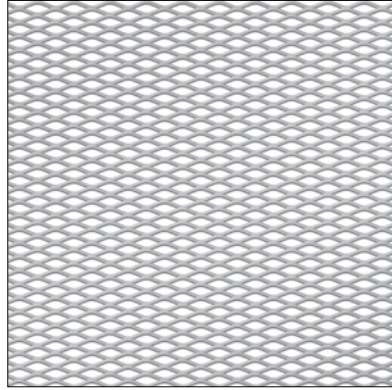
115x50x11mm genişletilmiş metal  
115x50x11mm expanded mesh metal

#### Malzeme / Material

Alüminyum / Aluminum

#### Yüzey / Surface

Elektrostatik toz boya  
Electrostatic powder coating



#### Uygulama / Application

Asma tavan / Suspended ceiling

#### Ürün / Product

45x15x3xmm genişletilmiş metal  
45x15x3xmm expanded mesh metal

#### Malzeme / Material

Çelik / Steel

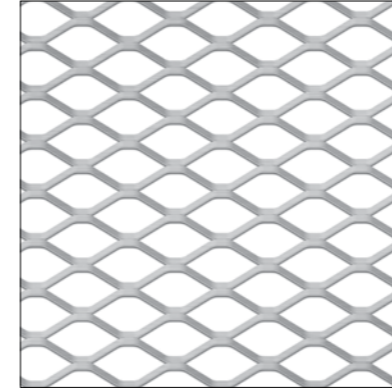
#### Yüzey / Surface

Elektrostatik toz boya  
Electrostatic powder coating



# MALL OF İSTANBUL

<b>Yer / Location</b>	İstanbul, Türkiye
<b>Tarih / Date</b>	2013
<b>Mimar / Architect</b>	Ömerler Architects, Development Design Group
<b>Tip / Type</b>	Karma Kullanım / Mixed Use



#### Uygulama / Application

Saçak altı / Canopy

#### Ürün / Product

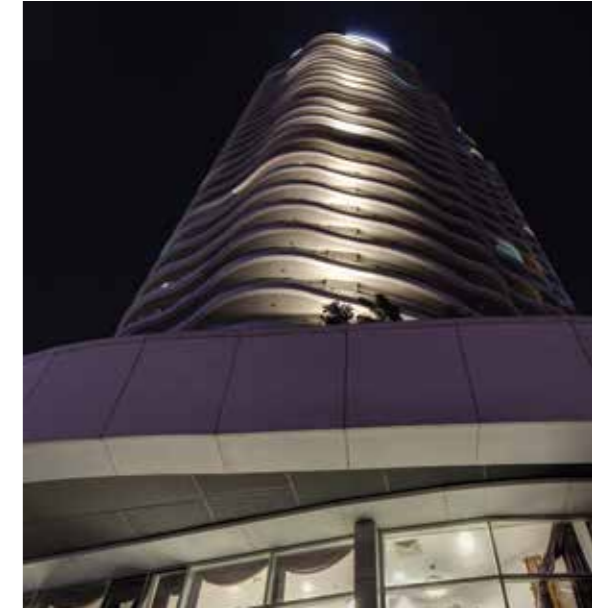
115x50x13mm genişletilmiş metal  
115x50x13mm expanded mesh metal

#### Malzeme / Material

Alüminyum / Aluminum

#### Yüzey / Surface

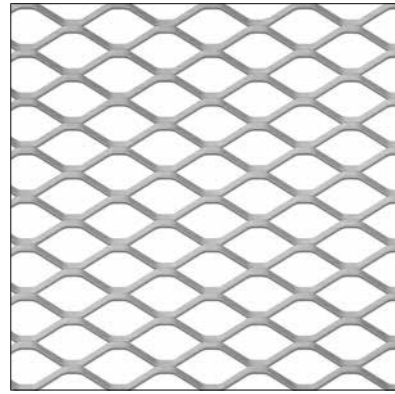
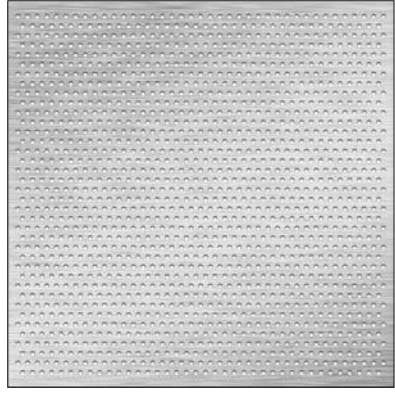
Elektrostatik toz boya  
Electrostatic powder coating





# FORUM İSTANBUL

<b>Yer / Location</b>	İstanbul, Türkiye
<b>Tarih / Date</b>	2009
<b>Mimar / Architect</b>	ERA, BDP, Chapman Taylor
<b>Tip / Type</b>	Karma Kullanım / Mixed Use



**Uygulama / Application**  
Kubbe / Dome

**Ürün / Product**  
Ø12mm delikli metal  
Ø12mm perforated metal

**Malzeme / Material**  
Alüminyum / Aluminum

**Yüzey / Surface**  
Elektrostatik toz boya  
Electrostatic powder coating

**Uygulama / Application**  
Cephe / Facade

**Ürün / Product**  
115x50x10mm genişletilmiş metal  
115x50x10mm expanded mesh metal

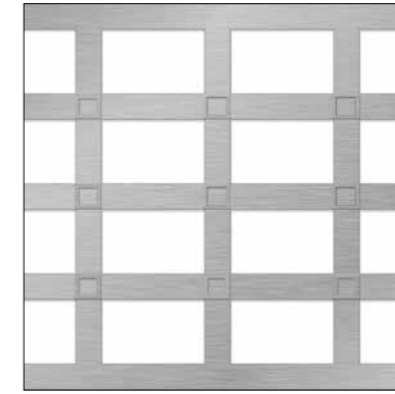
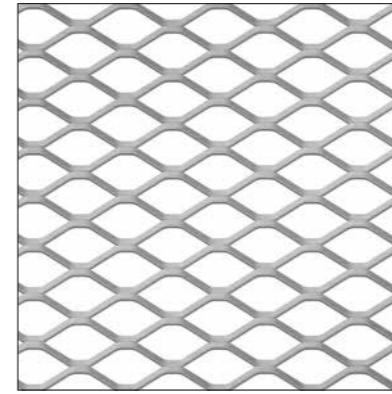
**Malzeme / Material**  
Alüminyum / Aluminum

**Yüzey / Surface**  
Elektrostatik toz boya  
Electrostatic powder coating



# FORUM ÇAMLIK

<b>Yer / Location</b>	Denizli, Türkiye
<b>Tarih / Date</b>	2008
<b>Mimar / Architect</b>	T+T Design, Chapman Taylor
<b>Tip / Type</b>	Karma Kullanım / Mixed Use



**Uygulama / Application**  
Cephe / Facade

**Ürün / Product**  
115x50x11mm genişletilmiş metal  
115x50x11mm expanded mesh metal

**Malzeme / Material**  
Alüminyum / Aluminum

**Yüzey / Surface**  
Elektrostatik toz boya  
Electrostatic powder coating

**Uygulama / Application**  
Totem

**Ürün / Product**  
50x80mm kabartmalı  
dikdörtgen delikli metal  
50x80mm embossed  
rectangular perforated metal

**Malzeme / Material**  
Alüminyum / Aluminum

**Yüzey / Surface**  
Elektrostatik toz boya  
Electrostatic powder coating





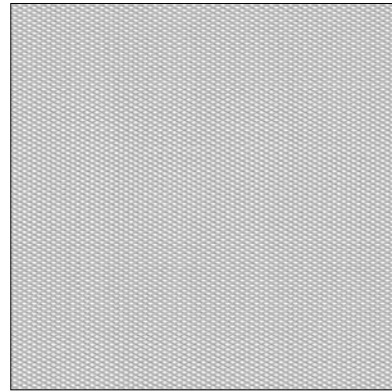
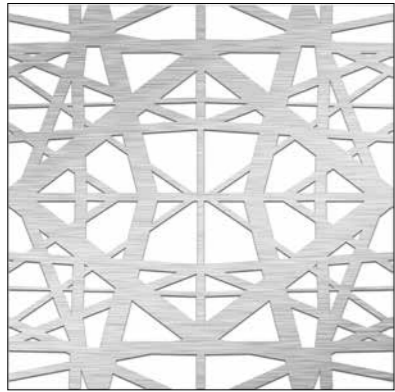
# GARANTİ KOZA PARK

**Yer / Location** İstanbul, Türkiye

**Tarih / Date** 2015

**Mimar / Architect** DDG Architects

**Tip / Type** Ofis / Office



**Uygulama / Application**

Saçak altı / Canopy

**Ürün / Product**

Desen kesim / Pattern cut

**Malzeme / Material**

Alüminyum / Aluminum

**Yüzey / Surface**

Elektrostatik toz boya  
Electrostatic powder coating

**Uygulama / Application**

Saçak altı / Canopy

**Ürün / Product**

12x6x1.5mm genişletilmiş metal  
12x6x1.5mm expanded mesh metal

**Malzeme / Material**

Alüminyum / Aluminum

**Yüzey / Surface**

Elektrostatik toz boya  
Electrostatic powder coating



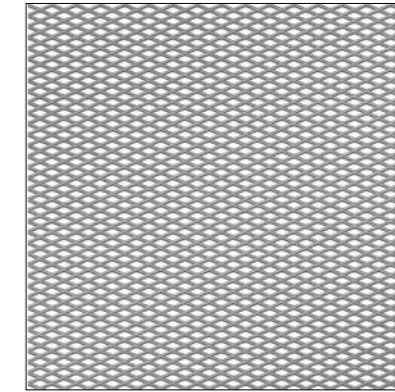
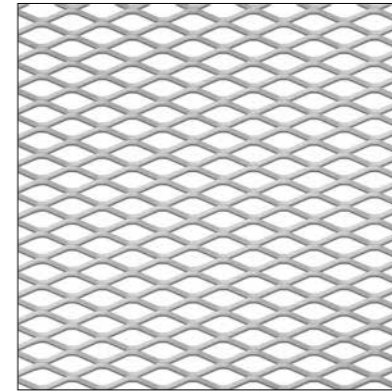
# MECAPLAST AR-GE MERKEZİ MECAPLAST R&D CENTER

**Yer / Location** Kocaeli, Türkiye

**Tarih / Date** 2011

**Mimar / Architect** Iglo Architects

**Tip / Type** Ofis / Office



**Uygulama / Application**

Cephe / Facade

**Ürün / Product**

65x25x6mm genişletilmiş metal  
65x25x6mm expanded mesh metal

**Malzeme / Material**

Alüminyum / Aluminum

**Yüzey / Surface**

Elektrostatik toz boya  
Electrostatic powder coating

**Uygulama / Application**

Asma tavan / Suspended ceiling

**Ürün / Product**

30x10x2.5mm genişletilmiş metal  
30x10x2.5mm expanded mesh metal

**Malzeme / Material**

Alüminyum / Aluminum

**Yüzey / Surface**

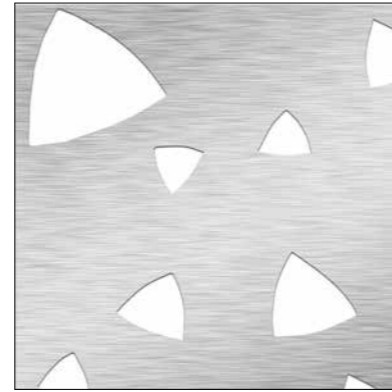
Elektrostatik toz boya  
Electrostatic powder coating





# BAŞKULE PLAZA

<b>Yer / Location</b>	İstanbul, Türkiye
<b>Tarih / Date</b>	2015
<b>Mimar / Architect</b>	Mekan Yapı, Muhteşem Cephe
<b>Tip / Type</b>	Ofis / Office



#### Uygulama / Application

Cephe / Facade

#### Ürün / Product

Desen kesim / Pattern cut

#### Malzeme / Material

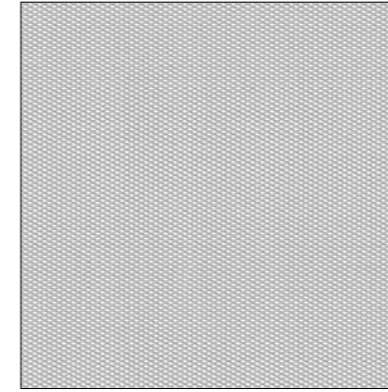
Alüminyum / Aluminum

#### Yüzey / Surface

Elektrostatik toz boya  
Electrostatic powder coating

# AVEK TEKSTİLKENT

<b>Yer / Location</b>	İstanbul, Türkiye
<b>Tarih / Date</b>	2014
<b>Mimar / Architect</b>	M-Ofis Architects
<b>Tip / Type</b>	Ticari / Commercial



#### Uygulama / Application

Cephe / Facade

#### Ürün / Product

12x6x1.5mm genişletilmiş metal  
12x6x1.5mm expanded mesh metal

#### Malzeme / Material

Alüminyum / Aluminum

#### Yüzey / Surface

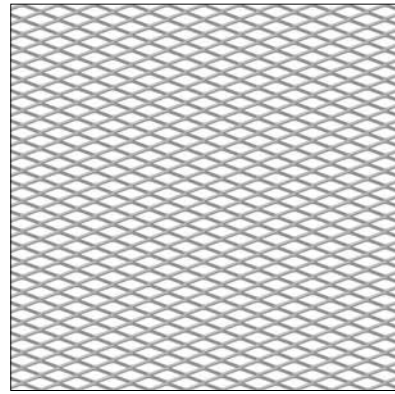
Elektrostatik toz boya  
Electrostatic powder coating





## ERGİNOĞLU & ÇALIŞLAR OFİS ERGİNOĞLU & ÇALIŞLAR OFFICE

<b>Yer / Location</b>	İstanbul, Türkiye
<b>Tarih / Date</b>	2013
<b>Mimar / Architect</b>	Erginoğlu & Çalışlar Architects
<b>Tip / Type</b>	Ofis / Office



### Uygulama / Application

Asma tavan / Suspended ceiling

### Ürün / Product

45x15x4mm genişletilmiş metal  
45x15x4mm expanded mesh metal

### Malzeme / Material

Alüminyum / Aluminum

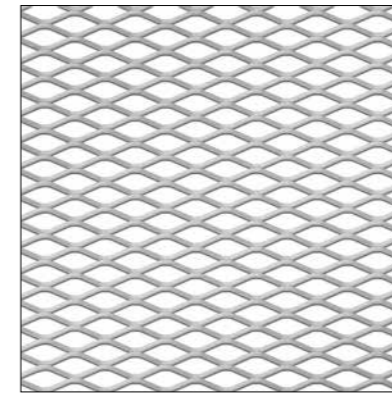
### Yüzey / Surface

Elektrostatik toz boya  
Electrostatic powder coating



## VİNERO ŞARAPHANESİ VİNERO WINERY

<b>Yer / Location</b>	Çanakkale, Türkiye
<b>Tarih / Date</b>	2015
<b>Mimar / Architect</b>	CM Architects
<b>Tip / Type</b>	Ticari / Commercial



### Uygulama / Application

Asma tavan / Suspended ceiling

### Ürün / Product

75x25x5mm genişletilmiş metal  
75x25x5mm expanded mesh metal

### Malzeme / Material

Çelik / Steel

### Yüzey / Surface

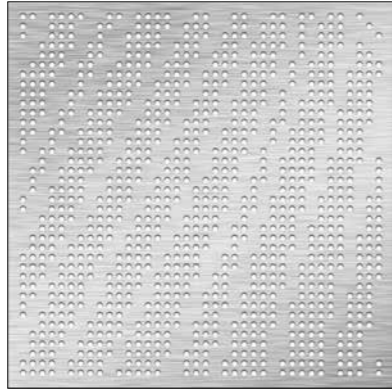
Elektrostatik toz boya  
Electrostatic powder coating



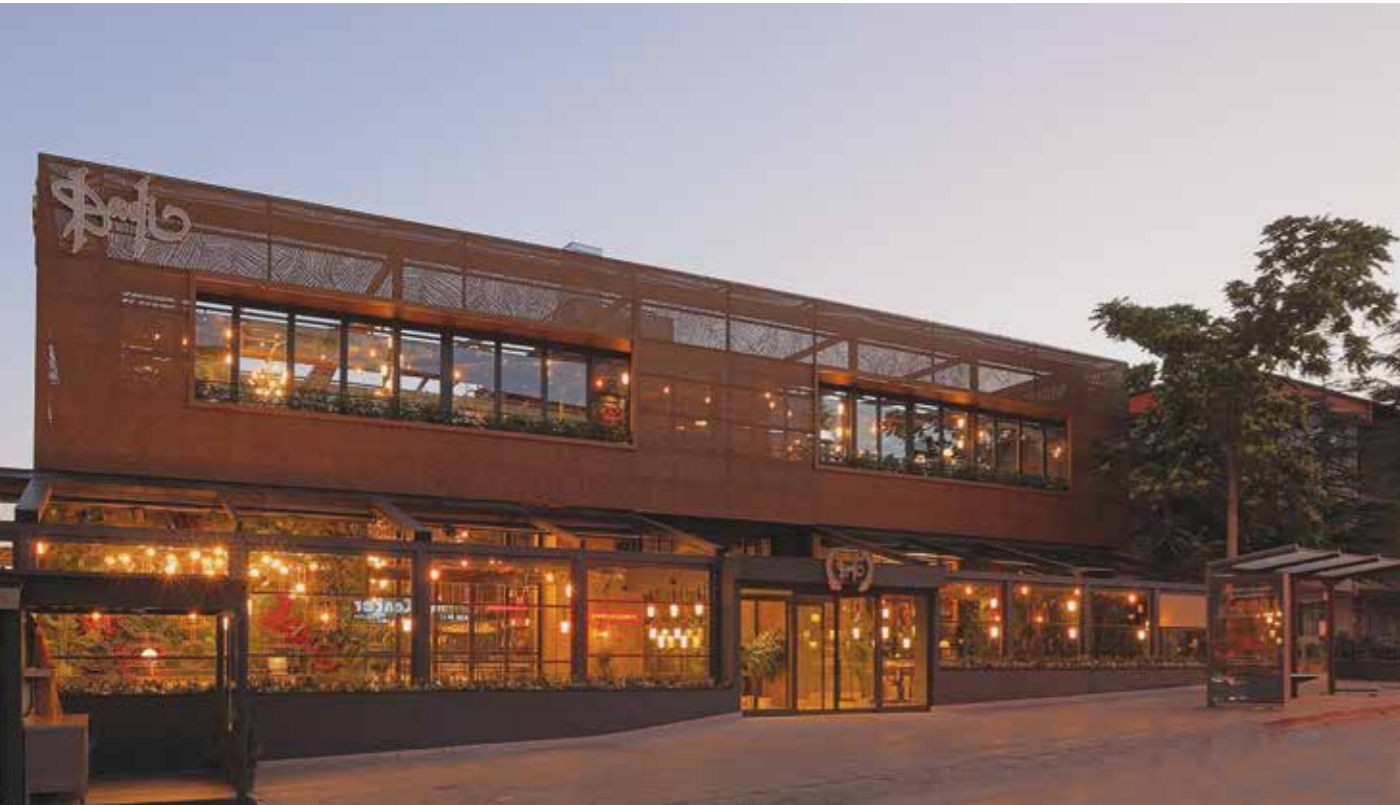


# DEVELİ RESTORAN DEVELİ RESTAURANT

<b>Yer / Location</b>	Ankara, Türkiye
<b>Tarih / Date</b>	2016
<b>Mimar / Architect</b>	Space Architects & Designers
<b>Tip / Type</b>	Restoran / Restaurant

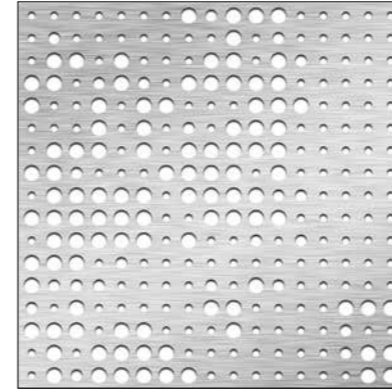


<b>Uygulama / Application</b>	Cephe / Facade
<b>Ürün / Product</b>	Ø8mm multiperfore metal Ø8mm multiperforated metal
<b>Malzeme / Material</b>	Alüminyum / Aluminum
<b>Yüzey / Surface</b>	Elektrostatik toz boya Electrostatic powder coating



# MG GÜLÇİÇEK KİMYA GENEL MERKEZİ MG GÜLÇİÇEK CHEMISTRY HEADQUARTERS

<b>Yer / Location</b>	Kocaeli, Türkiye
<b>Tarih / Date</b>	2015
<b>Mimar / Architect</b>	Aslan Gülçiçek
<b>Tip / Type</b>	Ticari / Commercial



<b>Uygulama / Application</b>	Cephe / Facade
<b>Ürün / Product</b>	Ø10mm, Ø20mm multiperfore metal Ø10mm, Ø20mm multiperforated metal
<b>Malzeme / Material</b>	Alüminyum / Aluminum
<b>Yüzey / Surface</b>	Elektrostatik toz boya Electrostatic powder coating

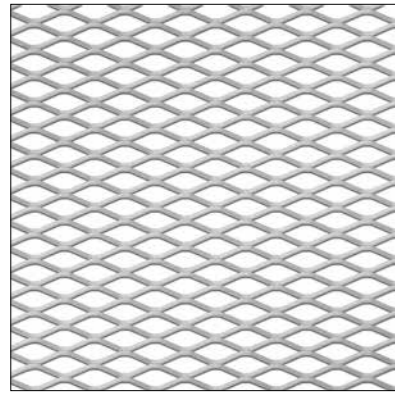




# GALLERIA ALIŞVERİŞ MERKEZİ

## GALLERIA SHOPPING MALL

<b>Yer / Location</b>	İstanbul, Türkiye
<b>Tarih / Date</b>	2016
<b>Mimar / Architect</b>	Tabanlıoğlu Architects
<b>Tip / Type</b>	Alışveriş Merkezi / Shopping Mall



### Uygulama / Application

Saçakaltı / Canopy

### Ürün / Product

75x25x6mm genişletilmiş metal  
75x25x6mm expanded mesh metal

### Malzeme / Material

Alüminyum / Aluminum

### Yüzey / Surface

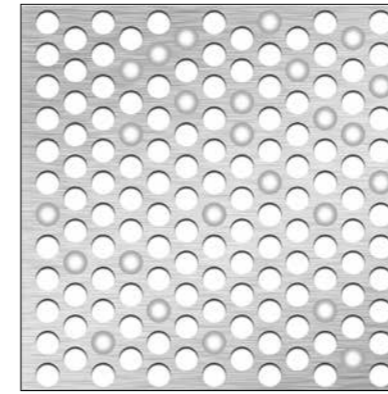
Elektrostatik toz boya  
Electrostatic powder coating



# YDA SÖĞÜTÖZÜ SATIŞ OFİSİ

## YDA SÖĞÜTÖZÜ SALES OFFICE

<b>Yer / Location</b>	Ankara, Türkiye
<b>Tarih / Date</b>	2016
<b>Mimar / Architect</b>	Korucuoğlu Architects
<b>Tip / Type</b>	Ofis / Office



### Uygulama / Application

Cephe / Facade

### Ürün / Product

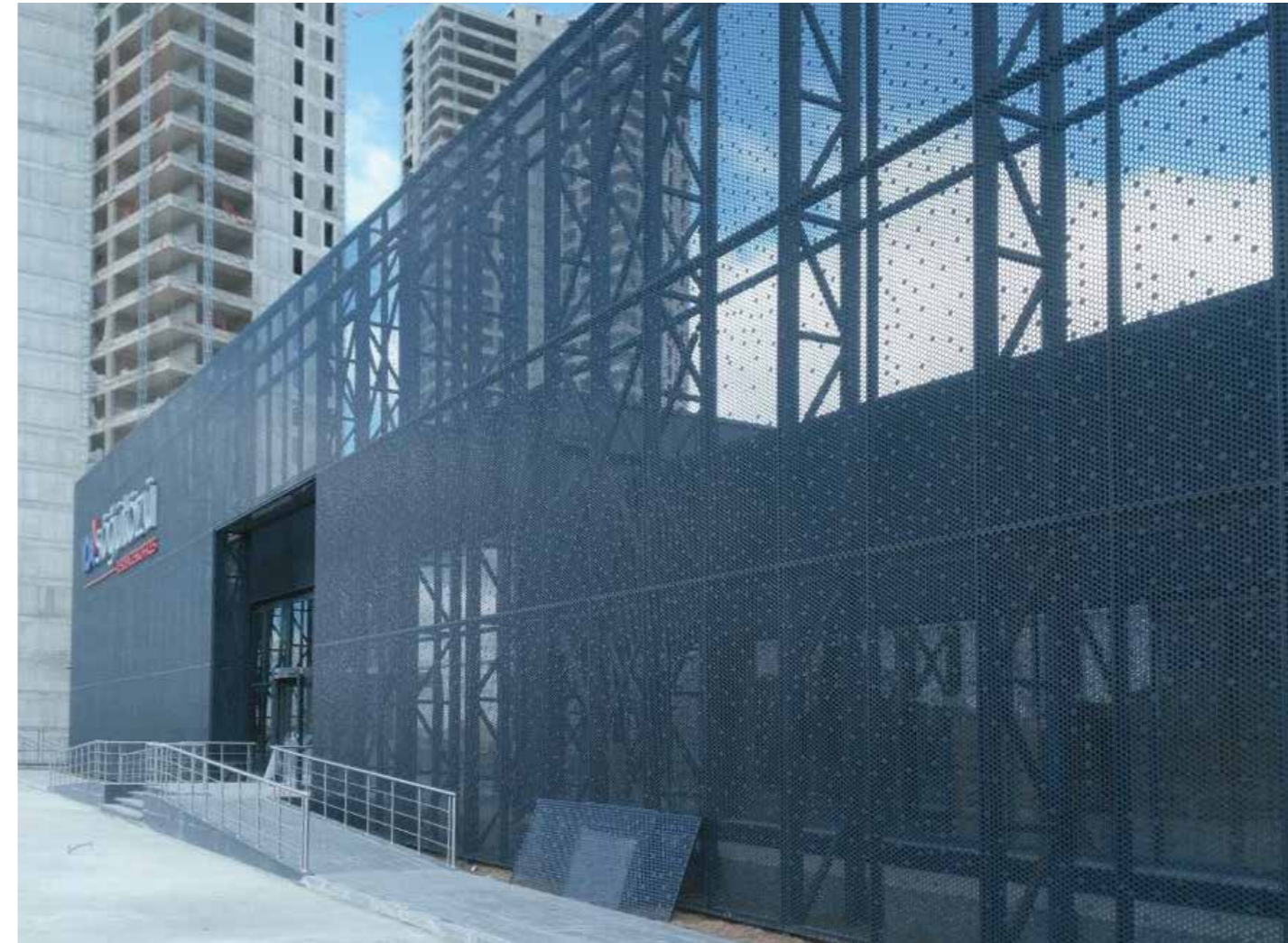
Ø30mm multiperfore metal,  
Ø24mm kabartmalı metal  
Ø30mm multiperforated metal,  
Ø24mm embossed metal

### Malzeme / Material

Alüminyum / Aluminum

### Yüzey / Surface

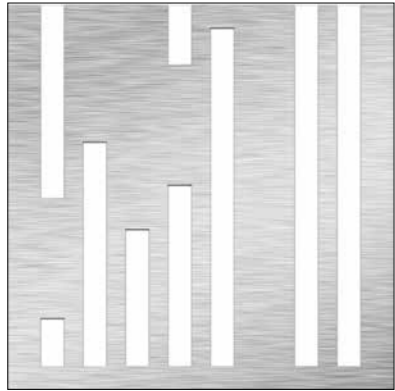
Elektrostatik toz boya  
Electrostatic powder coating





## BEYMEN / POINT BORNOVA BEYMEN / POINT BORNOVA

<b>Yer / Location</b>	İzmir, Türkiye
<b>Tarih / Date</b>	2015
<b>Mimar / Architect</b>	Toner Architects
<b>Tip / Type</b>	Ticari / Commercial



### Uygulama / Application

Cephe / Facade

### Ürün / Product

Desen kesim / Pattern cut

### Malzeme / Material

Alüminyum / Aluminum

### Yüzey / Surface

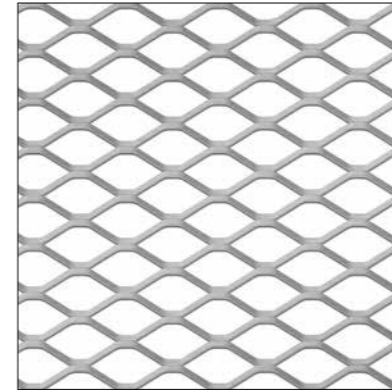
Elektrostatik toz boya

Electrostatic powder coating



## SOĞANLI KÜLTÜR MERKEZİ SOĞANLI CULTURAL CENTER

<b>Yer / Location</b>	Bursa, Türkiye
<b>Tarih / Date</b>	2014
<b>Mimar / Architect</b>	Osmangazi Belediyesi / Osmangazi Municipality
<b>Tip / Type</b>	Kültürel / Cultural



### Uygulama / Application

Cephe / Facade

### Ürün / Product

115x50x10mm genişletilmiş metal

115x50x10mm expanded mesh metal

### Malzeme / Material

Alüminyum / Aluminum

### Yüzey / Surface

Elektrostatik toz boya

Electrostatic powder coating





# EVİDEA MAĞAZASI

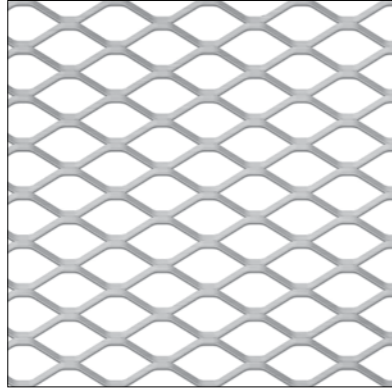
## EVİDEA STORE

**Yer / Location** İstanbul, Türkiye

**Tarih / Date** 2017

**Mimar / Architect** Tagusta

**Tip / Type** Ticari / Commercial



**Uygulama / Application**

Cephe / Facade

**Ürün / Product**

115x50x11mm genişletilmiş metal  
115x50x11mm expanded mesh metal

**Malzeme / Material**

Alüminyum / Aluminum

**Yüzey / Surface**

Elektrostatik toz boya  
Electrostatic powder coating



# ARKAS HOLDİNG OFİS

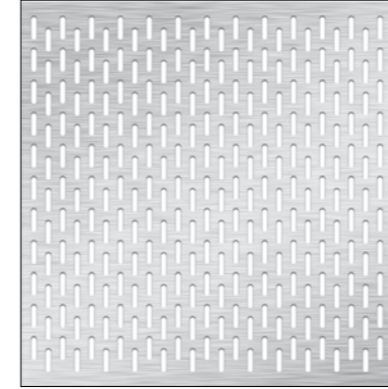
## ARKAS HOLDING OFFICE

**Yer / Location** İstanbul, Türkiye

**Tarih / Date** 2015

**Mimar / Architect** Kreatif Architects

**Tip / Type** Ofis / Office



**Uygulama / Application**

Güneş kırıcı / Sun shading louvre

**Ürün / Product**

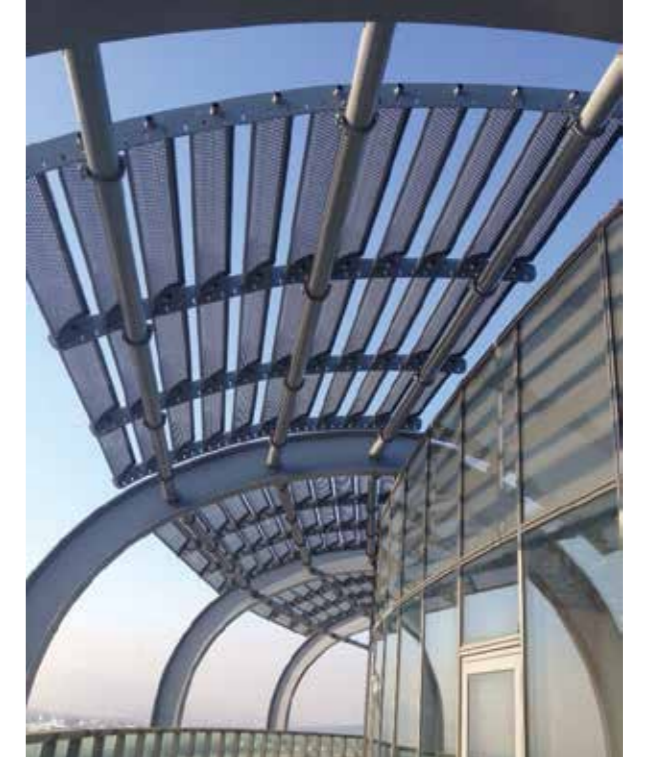
Ø10x30mm slot delikli metal  
Ø10x30mm slot perforated metal

**Malzeme / Material**

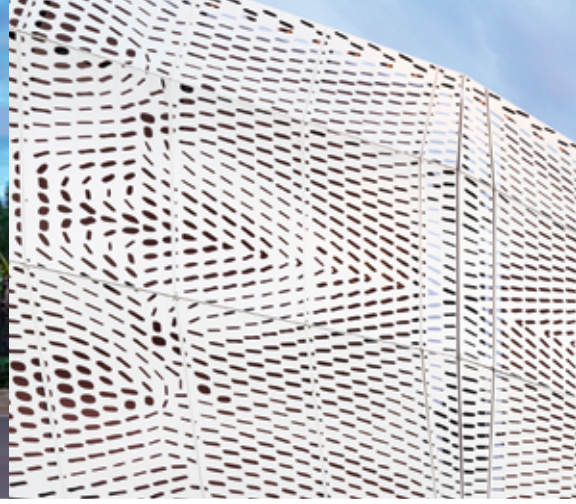
Alüminyum / Aluminum

**Yüzey / Surface**

Elektrostatik toz boya  
Electrostatic powder coating







**KASSO MÜHENDİSLİK SAN. VE TİC. A.Ş.**  
İstanbul Anadolu Yakası OSB  
2. Sokak No: 5, 34953  
Tuzla İstanbul TR

T +90 216 593 14 85 (pbx)  
F +90 216 593 14 89

[www.kasso.com.tr](http://www.kasso.com.tr)

**KASSO DIŞ TİC. LTD. ŞTİ.**  
İstanbul Anadolu Yakası OSB  
2. Sokak No: 5, 34953  
Tuzla İstanbul TR

T +90 216 593 14 86  
F +90 216 593 14 89

