

## Atmos Wave Flow

### Combining proven leak detection methods for increased confidence under all conditions.

#### The challenge

Many variables affect the performance of a leak detection system; including topology, telecommunication, instrumentation, the type of leak, and modes of operation. With several different ways of losing product and numerous different conditions for product loss, it has become clear that one single technology is not always sufficient to detect every product theft, leak, and rupture on a specific pipeline during all the operating conditions.

Atmos Wave Flow combines several different detection technologies to optimize sensitivity, detection speed, reliability, and accuracy regardless of the specific pipeline where it is applied.



*Theft sites detected by Wave Flow*

The individual strengths of each method assure:

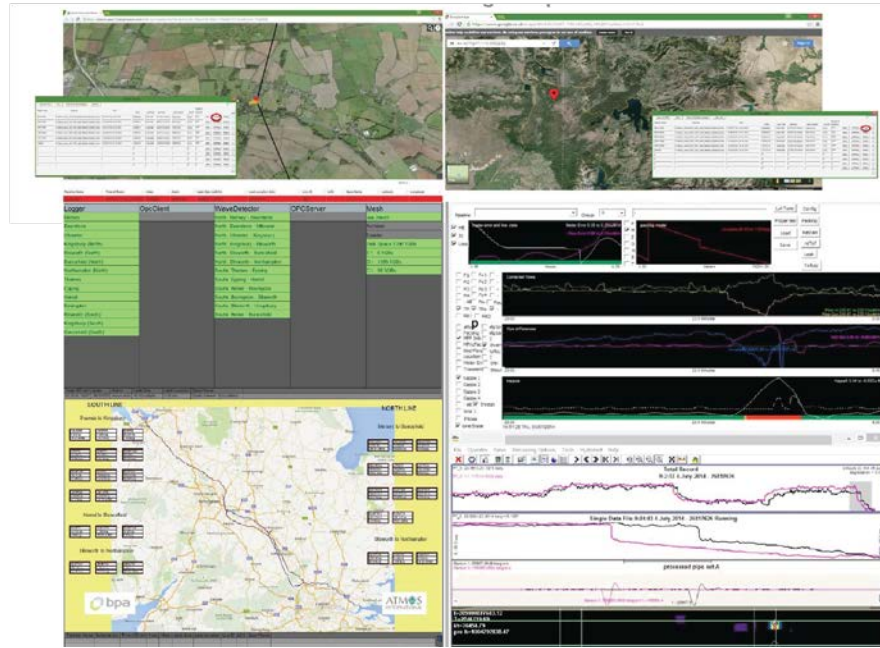
- Fast detection time
- Accurate leak location
- High sensitivity (exceeding flow meter performance)
- Low false alarms

Deploying multiple methods of leak detection will increase the confidence of pipeline operators who must decide on a suspected leak or theft.

#### Main features

- Confirmed leak alarm with very little product release
- Leak size as small as 0.04%\* of flow rate
- High leak location accuracy typically below 0.25% of monitored section length
- Enhanced algorithms that detect slowly opening and closing thefts
- Detects permanent or intermittent illicit connections
- Detects new and existing leaks
- Leak detection and location during shut-in, transient, and steady state conditions
- Detects ruptures in seconds to minutes
- High resolution, off-the-shelf, pressure sensors, and standard flow meters
- AWAS data acquisition units store data to mitigate losses from communication failures
- Designed for all pipeline operations, especially, gathering lines, high consequence areas, weeping leaks, and ruptures
- RTTM for inventory (line pack) and integrated hydraulic profile
- Complies with API 1130, API 1155, API 1149, API 1175, CSA Z662 and TRFL

\*requires a specific sensor arrangement to achieve sensitivity down to 0.04%.



Atmos Wave Flow engineering displays including map and GUI displays for leak and theft location

## What is Atmos Wave Flow?

Atmos Wave Flow merges the high reliability and accuracy of the mass balance (flow) elements with the proven sensitivity and accuracy of the negative pressure (wave) techniques to achieve the highest sensitivity and location accuracy, and the fastest detection time with few false leak alarms.

### Mass balance (Flow)

The mass, volume, or flow balance element of Atmos Wave Flow is the proven industry method enhanced with additional algorithms to correct for instrumentation errors and uncertainties and automated learning capabilities to compensate for variations. This assures correction for any measurement errors such as meter drift in the system. A real-time transient model (RTTM) corrects the actual flow difference for the inventory change. Atmos Wave Flow then alarms if the calculated imbalance is greater than the configured sensitivity.

Although Wave Flow's flow balance method and traditional mass balance technologies both use flow meters to identify leaks and their properties, only Atmos uses a sophisticated multi-element real-time model to reduce the uncertainties in the system, this significantly reduces the response time.

The main benefits of this method are:

- Sensitivity to slowly developing leaks
- Accurate leak location
- Low false alarm rate
- Fast leak detection time

### Acoustic/negative pressure wave

When a leak occurs, negative pressure waves are generated. These waves travel through the fluid and are sensed by the high-resolution pressure meters upstream and downstream of the leak. The magnitude of the pressure drop and the time it takes for the pressure waves to reach the meters determine the leak size and location. The analogue pressure data is associated with a rarefaction wave created by an onset leak. Three comprehensive algorithms then filter process noise and interference from the pressure data to create a detailed 3-dimensional map. This map allows the system to clearly differentiate true leak/theft events from the pressure changes caused by transient operations and declare loss of containment events quickly and reliably.

The negative pressure wave method has been successfully implemented in pipelines with very challenging operational conditions. Extensive performance evaluation and field trials have proven that Atmos Wave is superior to competitive systems in the market\*.

The main benefits of this method are:

- Fast leak detection
- Accurate leak location
- Improved sensitivity

\* "Field Testing of Negative-Wave Leak Detection Systems", API 2014 Pipeline Conference and Cybernetics Symposium. Proceedings 8-10 April 2014, San Antonio USA.

## Optional Atmos Wave Flow modules

Atmos Wave Flow can also include additional complimentary methods to detect product loss faster and locate it even more accurately.

### Pressure distribution analysis (PDA)

This module works by monitoring the pipeline pressure on pressure meters distributed along the line. The system models the pressure decay along the line against the actual readings. If a leak occurs, the model clearly displays the deviations from the expected output. A minimum of three pressure meters is required for leak detection and leak location using this module.

### Dynamic model analysis (DMA)

This module uses pattern recognition to detect the onset of a leak. An onset leak can often be identified as a rise in inlet flow while outlet flow, inlet pressure, and outlet pressure may drop. DMA works at SCADA sampling rate, analyzing data over short spans. This means flow meter drift does not affect leak detection sensitivity.

### Rupture detection

Atmos uses a combination of PDA, DMA, KL and inventory algorithms to detect a pipeline rupture. The system gives the operator the confidence to shut down the pipeline, limiting product loss, environment damage, and fines. The rupture detection module will alarm and locate a rupture on a pipeline that is running, shut in or starting up, with or without flow meters. The system will alarm in seconds to minutes, and will alarm even if the pump trips within 10 seconds of start-up.

### Atmos Pipeline Guardian

Atmos Wave Flow is part of the Pipeline Guardian line that includes hardware solutions to overcome traditional LDS limitations such as lack of instrumentation, power and communication. Pipeline Guardian assures a turnkey LDS wherever sensitive leak and theft detection is required.

Components for easy installation anywhere sensitive leak detection is needed:

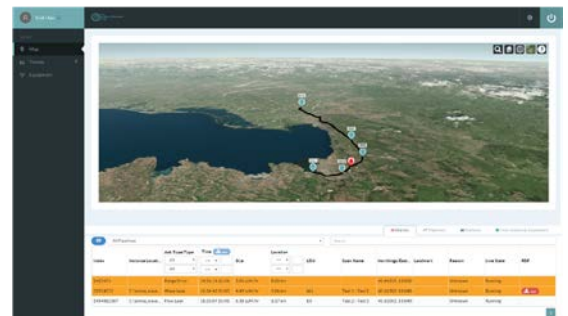
- **Stub pipelines**
- **Inter-refinery and terminal pipelines**
- **River crossings**
- **HCA's**
- **Any location, no matter how remote**

## Data source

- SCADA, DCS or PLC/RTU
- Pressure, flow, density, and temperature data is acquired with the proprietary Atmos AWAS unit

## System outputs

- Leak alarm
- Leak location
- Leak rate
- Volume lost
- Leak time
- Watchdogs via OPC
- SMS for leak alarms
- Emails for leak alarms
- Web GUI (Graphical user interface)
- Workstation GUI (Graphical user interface)



Atmos Web GUI Interface

## Hardware options

- High resolution pressure meters selected for leak detection
- High performance flow meters tailored for leak detection
- Wall mounted enclosures
- ATEX enclosures
- Multiple alternative communications architecture available if required (GSM, satellite, radio)
- Density/composition, temperature, and viscosity data is acquired where available for flow standardisation calculations

**Atmos International**  
Email: info@atmosi.com

**UK**  
St Paul's 781 Wilmslow Road  
Manchester M20 2RW  
Tel: +44 161 445 8080  
Fax: +44 161 434 6979

**USA**  
14607 San Pedro Avenue Suite 290  
San Antonio TX 78232 USA  
Tel: +1 210 562 3164  
Fax: +1 714 520 5326

3100 E. Miraloma Ave Suite 240 D  
Anaheim CA 92806  
Tel: +1 714 520 5325  
Fax: +1 714 520 5326

**Latin America S.A.**  
Edificio Murano  
piso 2 oficina 23  
147 Radial  
200 mts N. de la Cruz Roja  
Santa Ana San José  
Costa Rica 10901  
Tel: +506 4000 3841

**People's Republic of China**  
705 RuiChen International Center  
No13 Nongzhanguan South Road  
Chaoyang District Beijing 100027  
Tel: +86 10 65033031- 808  
Fax: +86 10 65033085

**Russian Federation**  
Office 1012, 1013  
Marshal Rybalko St. 2  
Moscow 123060  
Tel: +7 499 918 4140

© 2018 Copyright Atmos International (Atmos). All rights reserved.  
All information is subject to change. Please contact an Atmos representative for the most current information.

POEN\_WAVEFLOW\_03/18

#### About Atmos International

Founded in 1995, Atmos International provides pipeline leak and theft detection, simulation technology, instrumentation and engineering services to the energy, water and associated industries. Atmos is the first choice of most pipeline companies worldwide, and is extensively used by major operators like Shell, BP, ExxonMobil, Petrobras, Enbridge and Total. With associated offices in the USA, China, Russia, Singapore, Indonesia, Colombia, Ecuador, Peru and Costa Rica, and local agents in 28 countries, our multi-cultural and multilingual team is dedicated to effective global support for the lifetime of our products all over the world.

[www.atmosi.com](http://www.atmosi.com)

