

## The Southeastern Society of Parasitologists

An affiliate of the American Society of Parasitologists

<https://southeasternsocietyparasitology.org/>

### **Annual Meeting of the Southeastern Society of Parasitologists Cumberland Gap, Tennessee Hosted by Lincoln Memorial University April 20-22, 2023**

Lincoln Memorial University (LMU) cordially invites members of the Southeastern Society of Parasitologists, and their guests, to the 2023 annual meeting hosted at its campus in Harrogate TN. LMU is an independent coeducational institution located northeastern Tennessee. The LMU campus is beautifully situated at the foot of historic Cumberland Gap, the gateway to 18<sup>th</sup> century western expansion following the famous Wilderness Road pioneered by Daniel Boone



**REGISTRATION:** Registration is \$95 for non-student members and \$75 for student members. Annual dues are collected during registration @ \$10 (members), and \$5 (students) and should be included in the total amount remitted through our on-line payment portal PayPal prior to April 1. After that time, a \$10 late registration fee will be applied to all registrations received after April 1. Your registration fee includes most of the expenditures for food and beverages provided during breaks and social events during the meeting. If you pre-register but cannot attend the meeting you will be refunded your entire registration fee if we receive notice two weeks prior to the meeting. Late registration will be possible at the meeting site from 20-22 April 2023. Meeting materials will be issued upon arrival at the meeting. The meeting will begin on Thursday evening with a social event at *Angelo's in the Gap* a short walk from the hotel with opening remarks from Dr. Chris Cleveland, President of SSP. All activities on Friday (4/21) and Saturday (4/22) associated with the meeting will be held in the College of Veterinary Medicine building on the LMU campus.



## ACCOMMODATIONS

**Twenty-eight rooms (5 single King; 23 double Queen) have been reserved in the Cumberland Gap Inn.** Each room has a fully private balcony or patio and fully furnished in the standard motel room configuration (2 Queen beds or 1 King-size bed). All rooms are equipped with coffee makers, refrigerator, microwave, hairdryer, and irons. Two rooms on the ground floor are ADA compliant.

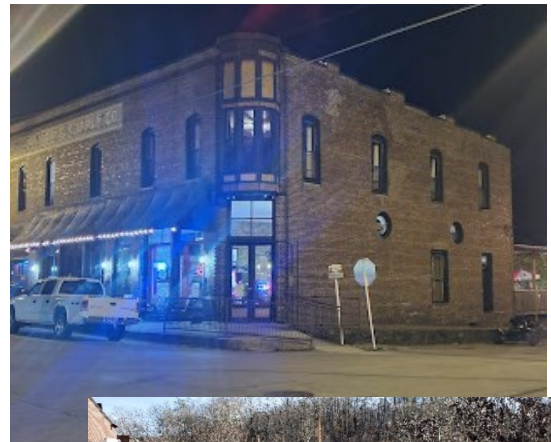
Reservations can be made directly with the front desk at the INN by phone 423-869-3996 under the following group ID 2023230 @ \$71.50/ night. Be sure to say that you are with the Southeastern Society of Parasitologists and confirm the reservation with your own credit card. **Following the cut-off date “April 1, 2023”** the Inn will release all un-booked rooms for other guests, so it is important that you make your reservations before then. Off-site accommodations are extremely limited, the closest being in Middlesboro KY approximately 3 miles away. Don't miss out on the fun in Cumberland Gap because you have drive back to your hotel at night.



**FOOD:** The Thursday night social will include a pizza/pasta buffet and complimentary drink tickets. On Friday and Saturday mornings, pastries and coffee/juice will be available at the meeting site. A buffet lunch will also be provided on Friday and Saturday. All attendees will be on their own for dinner Friday night. The town of Cumberland Gap has several dining options available at reasonable cost within walking distance of the hotel.

**SPECIAL EVENTS:** On Thursday night during registration the opening reception with pizza/pasta buffet and social beverages will be held at the local watering hole *Angelo's in the Gap* a short 2-minute walk from the hotel. Weather permitting; we will congregate on the back patio for a relaxing evening of conversation and interaction.

The meeting will begin on Friday with presented paper sessions and the *President's Invited Keynote Address*. The meeting will conclude Saturday afternoon with the combined luncheon, business meeting and presentation of the Byrd-Dunn and Ciordia-Stewart-Porter student presentation awards.



**PRESENTATION FACILITIES:** All paper presentations will be held in the Gillespie College of Veterinary Medicine building on the LMU campus. The campus is a short 2-mile bicycle ride



via the paved greenway connecting LMU and Cumberland Gap. Attendees can also drive to the Campus and there is ample parking near the venue. All presentation sessions will feature classroom style seating and equipped with a desktop computer, projector, and screen for digital software-based presentations using the Microsoft Windows platform.

**TRAVEL:** Lincoln Memorial University is located approximately 69 miles north of Knoxville TN on I-75 or 42.5 miles north of Morristown TN on US 25E. **From Knoxville on I-75 North**, take exit 134 toward Jacksboro/LaFollette, merge onto US 25W and turn left at traffic light to follow TN 63 to Harrogate (29.8 miles). Turn left at traffic light (park and ballfields on left) onto Cumberland Gap Parkway (US 25E), follow signs to Cumberland Gap and take exit to US 58E. Turn left at Holiday Tire and follow South Cumberland Dr. into the town. **From Morristown TN** on I-81, follow US 25E (four-lane highway) north bound to Tazewell TN, turn right onto Cumberland Gap Parkway and follow signs to Harrogate TN. In Harrogate, follow signs to Cumberland Gap and exit on US 58E as detailed above. Very important be sure to exit US 25E onto US 58E before going through the tunnel at Cumberland Gap. This will take you into Kentucky and require that you turn around and return to Tennessee and try again. An interactive map and directions are available following this link:

[Knoxville, TN to Lincoln Memorial University - Google Maps](#)

[Morristown, Tennessee to Lincoln Memorial University - Google Maps](#)

[Lincoln Memorial University to Cumberland Gap, TN - Google Maps](#)

**WEATHER:** in the Cumberland Mountains during April is unpredictable to say the least. The infamous wintry mix with snow and rain is a common feature of the early spring weather patterns. Daytime weather has been described as moderately chilly with a gentle breeze. High temperatures in the 60°s and nighttime lows in the 40°s are not uncommon during the month of April. However, sunny weather with daytime high temperatures in the 70°s is also possible. Your best bet is to prepare for both extremes and dress in layers. A shell parka that is waterproof/water resistant is essential. Plan to add a fleece layer if it is cold and leave it in your duffle bag if we get lucky and have some great weather.



**RECREATIONAL/LEISURE ACTIVITIES:** The town of Cumberland Gap is adjacent to the Cumberland Gap National Park with walking trails to the iconic *saddle of the gap* that preserves and interprets Daniel Boone's famous *Wilderness Road* as the gateway to the west. A paved greenway connects the town to the LMU campus for persons wishing to walk or ride bicycles. A free-bike share is available courtesy of Cumberland Gap business and restaurant venues. Information for checking out bicycles is available at the Inn.



## **ACTIONS REQUIRED:**

- 1. Reserve accommodations at Cumberland Gap Inn before April 1, 2023.**

[Reservations | Cumberland Gap Inn \(hotelcumberlandgap.net\)](http://hotelcumberlandgap.net)

Use group Id # 2023230 "Southeastern Society of Parasitologists to make your reservations.

- 2. Submit abstract using online link <https://www.surveymonkey.com/r/BCY96TW> no later than March 15, 2023**
- 3. Complete the on-line pre-registration by April 1, 2023 ( to receive "early bird" rate) @ [Meeting Registration \(southeasternsocietyparasitology.org\)](http://southeasternsocietyparasitology.org)**
- 4. Questions regarding local arrangements can be directed to Dr. Charles Faulkner (phone: 800-325-0900, ext. 6676; email: [charles.faulkner@lmunet.edu](mailto:charles.faulkner@lmunet.edu)), or Dr. Vina Faulkner (phone: 800-325-0900, ext. 6407, email: [vina.faulkner@lmunet.edu](mailto:vina.faulkner@lmunet.edu)).**
- 5. Questions regarding abstract submission and the scientific program should be directed to Dr. Elizabeth Gleim (email: [egleim@hollins.edu](mailto:egleim@hollins.edu))**