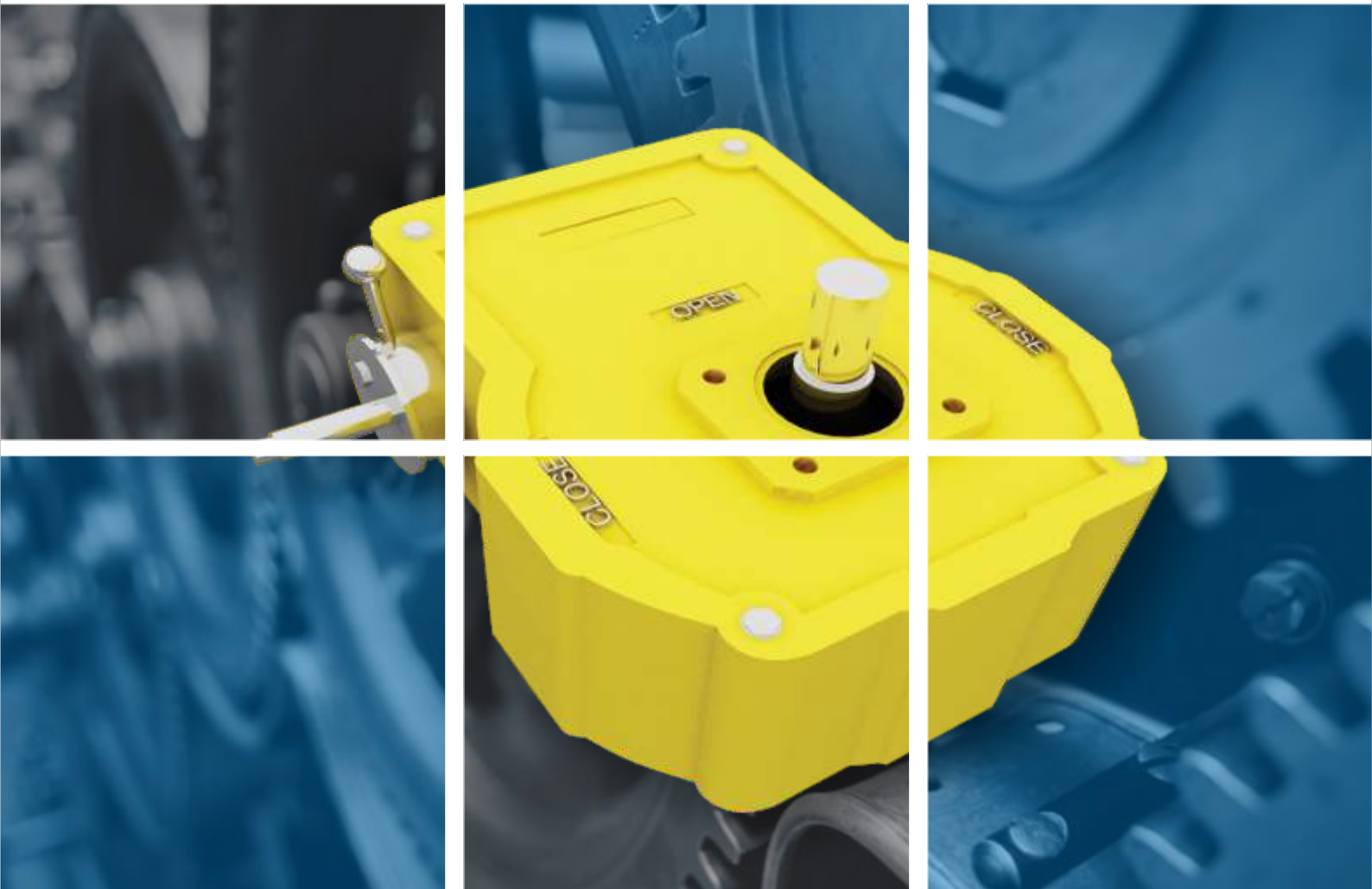


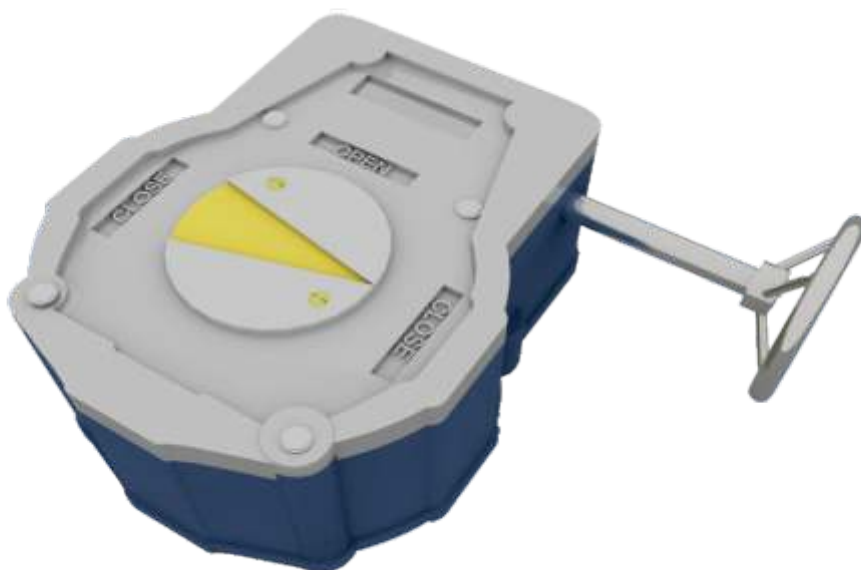
MANUFACTURE OF VALVE OPERATORS

& Manual Overrides Actuators



VISTAGEAR
Masters

VGM SERIES: Quarter Turn Worm Gear Operators for Manual Operation



Features :

- 19 models up to 1,00,000 Nm Output torque
 - Alloy steel input shafts
 - Rugged Design
 - High performance axial bearings
 - Epoxy Primer coating or powder coating
 - Powder coated Hand wheels
- Stroke – 0° to 90° (+ / - 5°)

**GEARED
FOR
EXCELLENCE**

About the VGM Series :

The VGM series gear boxes are quarter turn devices used To operate butterfly, ball, plug valves and dampers. All Model in this series are compact designed, epoxy Primer coated or powder coated and feature high Performance axial bearings.

These gear operators are well suited for chemical, power, oil and gas, waterworks, sewage, HVAC and other general industrial applications.



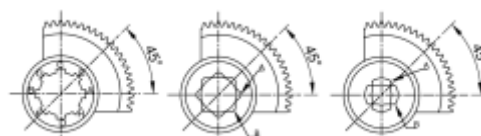
Performance Specifications Of Quarter Turn Gear Operators (MANUAL OPERATION - VGM SERIES)

Options :

- Locking Arrangement
- Housing material options (Ductile Iron / Carbon Steel / Stainless steel)
- Worm wheel material (Al. Bronze)
- Shaft, Hardware and hand wheel (Stainless Steel)

Specification :

- Std Enclosure- IP-65 & IP-67
- Lubrication-High performance Grease filled



VIEW FROM TOP AT CLOSE POSITION

11	ECCENTRIC BUSH	FG 200	IS 210	ASTM A48 35B/40B	GG-20
10	THRUST BEARING	STD			
9	SPUR GEAR	En19	C55	SAE 4140	42CrMo4
8	SPUR PINION	En19	C55	SAE 4140	42CrMo4
7	SPUR COVER	FG 200	IS 210	ASTM A48 35B/40B	GG-20
6	SPUR HOUSING	FG 200	IS 210	ASTM A48 35B/40B	GG-20
5	WORM	En8 / 20 Mn Cr5	45C8/20MnCr1	45C8/	CK-45/20MnCr5
4	INPUT SHAFT	En8 / En19	45C8/C55	SAE 1040/SAE 4140	CK-45/42CrMo4
3	SEGMENT	S.G.IRON 500/7	IS 1865	ASTM A536 80-55-06	GGG-50
2	COVER	FG 200	IS 210	ASTM A48 35B/40B	GG-20
1	HOUSING	FG 200	IS 210	ASTM A48 35B/40B	GG-20
			IS	USA	DIN
SR. NO.	JOB DESCRIPTION	MATERIAL	STANDARD	STANDARD	STANDARD

REFER FIG (1)FOR MODELS UPTO VGM 40
REFER FIG (2)FOR MODELS ABOVE VGM 40

VGM Model	Rated out put torque (Nm)	Mech Advantage +/-10%	Ratio	Turn to close	ISO 5211 Mounting	Max Drive Bore	Approx Unit Weight (KG)	Recommended Hand Wheel (MM)
VGM 2.5	250	8	33:1	8.25	F05,F07	20	2.7	Ø 175/200
VGM 05	500	10	40:1	10	F07, F10	30	5	Ø 200/250
VGM 07	700	10	40:1	10	F07, F10, F12	32	7	Ø 300/350
VGM 10	1000	12	44:1	11	F10, F12,F14	45	9.5	Ø 350/400
VGM 15	1500	14	48:1	12	F10,F12, F14,F16	50	12	Ø 450/500
VGM 20	2000	16	60:1	15	F10,F12, F14,F16	50	15	Ø 450/500
VGM 30	3000	22	80:1	20	F12, F14,F16	60	30	Ø 450/500
VGM 35	3500	20	73:1	18.25	F14,F16	80	33	Ø 500/600
VGM 40	4000	24	90:1	22.5	F25	80	36.5	Ø 500/600
VGM 45	4500	50	264:1	66	F16, F25	100	58	Ø 500/600
VGM 65	6500	65	292:1	73	F12, F14,F16	60	38	Ø 500/600
VGM 80	8000	70	300:1	75	F25	80	43	Ø 500/600
VGM 10K	10000	75	450:1	75	F14, F16	80	41	Ø 600
VGM 15K	15000	100	456:1	112.5	F25	80	45	Ø 600
VGM 22K	22500	120	1150:1	114	F16, F25	90	65	Ø 600/750
VGM 35K	35000	253	1302:1	287.5	F25, F30	100	74	Ø 600/750
VGM 50K	50000	287	1302:1	325.5	F25, F30,F35	100	84	Ø 600/750
VGM 75K	75000	400	1788:1	447	F25, F30,F35	110	136	Ø 600/750
VGM 100K	100000	600	2624:1	656	F30, F35, F40	150	160	Ø 750/900
					F40, F48	200	380	Ø 750/900
					F40, F48	200	430	Ø 750/900
					F40, F48	200	450	Ø 750/900

EA SERIES: Quarter Turn Worm Gear Operators for Electrical Actuation



Features :

- 14 models up to 85,000 Nm output torque
- Heat treated worm shafts
- Surface hardened worm wheels
- High performance axial bearings
- Epoxy primer coating
- Stroke – 0° to 90° (+ / - 5°)
- Compatible with all electrical actuators

**GEARED
FOR
EXCELLENCE**

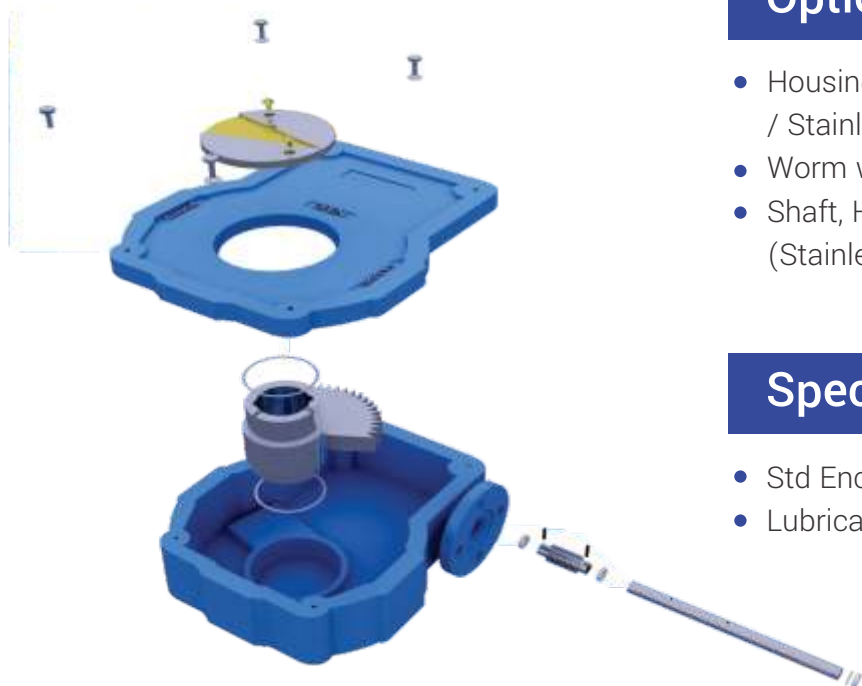
About the EA Series :

The EA series gear operators are quarter turn devices suitable for electrical actuator to operate butterfly, ball, Plug valves and dampers. The EA series gear operators are similar to the VGM series Gear operators but with higher grade material or surface Treatment of internals.





Performance Specifications Of Quarter Turn Gear Operators (ELECTRICAL ACTUATION - EA SERIES)

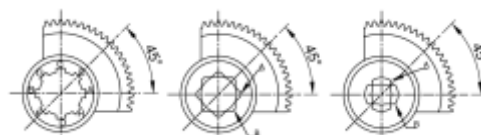


Options :

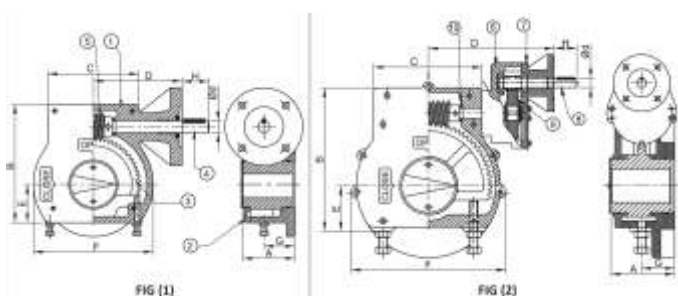
- Housing material options (Ductile Iron / Carbon Steel / Stainless steel)
- Worm wheel material (Al. Bronze)
- Shaft, Hardware and handwheel (Stainless Steel)

Specification :

- Std Enclosure- IP-65 & IP-67
- Lubrication-High performance Grease filled



VIEW FROM TOP AT CLOSE POSITION

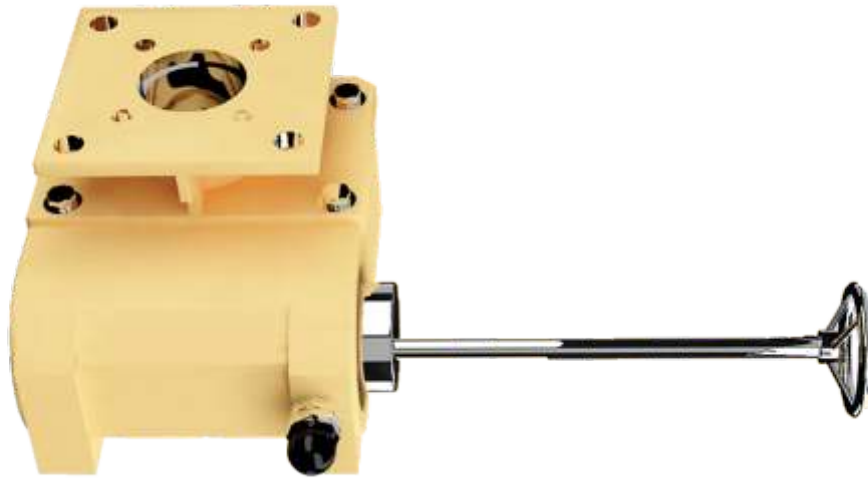


REFER FIG (1) FOR MODELS UPTO VGM 36 EA
REFER FIG (2) FOR MODELS ABOVE VGM 36 EA

11	ECCENTRIC BUSH	FG 200	IS 210	ASTM A48 35B/40B	GG-20
10	THRUST BEARING	STD	-	-	-
9	SPUR GEAR	En19	C55	SAE 4140	42CrMo4
8	SPUR PINION	En19	C55	SAE 4140	42CrMo4
7	SPUR COVER	FG 200	IS 210	ASTM A48 35B/40B	GG-20
6	SPUR HOUSING	FG 200	IS 210	ASTM A48 35B/40B	GG-20
5	WORM	En8 / 20 Mn Cr5	45C8/20MnCr1	45C8/20MnCr5	CK-45/20MnCr5
4	INPUT SHAFT	En8 / En19	45C8/C55	SAE 1040/SAE 4140	CK-45/42CrMo4
3	SEGMENT	S.G IRON 500/7	IS 1865	ASTM A536 80-55-06	GGG-50
2	COVER	FG 200	IS 210	ASTM A48 35B/40B	GG-20
1	HOUSING	FG 200	IS 210	ASTM A48 35B/40B	GG-20
SR. NO.	JOB DESCRIPTION	MATERIAL	IS STANDARD	USA STANDARD	DIN STANDARD

VGM Model	Rated Output torque (Nm)	Mech Advantage +/- 10%	Ratio	Turns to close	ISO 5211 Mounting	Max Drive Bore	Approx Unit Weight (Kg)	Actuator MTG Flange
VGM 07EA	700	10	40:1	10	F07,F10	30	9	F10
VGM 20EA	2000	16	63:1	15.25	F10,F12,F14	55	17	F10
VGM 30 EA	3000	20	73:1	18.25	F14,F16 F25	80	40 48	F10
VGM 36 EA	3600	23	90:1	22.5	F16, F25	90	66	F10
VGM 40 EA	4000	50	264:1	66	F12, F14,F16 F25	60 80	36 41	F10
VGM 60 EA	6000	65	292:1	73	F14,F16 F25	80	48 53	F10
VGM 75 EA	7500	70	300:1	75	F16, F25	90	75	F10
VGM 10K EA	10000	75	300:1	75	F25, F30	100	78	F10
VGM 14K EA	14000	100	450:1	112.5	F25, F30	100	90	F14
VGM 20K EA	20000	120	456:1	114	F25, F30,F35	110	145	F14
VGM 30K EA	30000	253	1150:1	287.5	F25, F30,F35	150	175	F14
VGM 45K EA	45000	287	1302:1	325.5	F30, F35, F40	150	380	F14
VGM 65K EA	65000	400	1788:1	447	F40, F48	200	450	F16
VGM 85K EA	85000	600	2624:1	656	F40, F48	200	460	F16

MOR SERIES: Quarter Turn Worm Gear Operators for Pneumatic Actuation



Features :

- 6 models up to 5,000 Nm Output torque
- Alloy steel input shafts
- Rugged Design
- High performance axial bearings
- Epoxy Primer coating or powder coating
- Powder coated Hand wheels
- Stroke – 0° to 90° (+ / - 5°)
- Smooth and easy CLUTCH – DECLUTCH Mechanism

**GEARED
FOR
EXCELLENCE**

About the MOR Series :

The MOR series manual overrides are quarter turn devices Used to operate pneumatically actuated valves. The MOR series of quarter turn manual overrides are Robust industrial grade products manufactured with cast Iron housing components. All models in this series are compact designed, epoxy Primer coated and feature high performance axial bearings. The MOR series have optimum ratios for reduced effort During operation.



Performance Specifications Of Quarter Turn Gear Operators (MOR SERIES)

Options :

- Housing material options (Ductile Iron / Carbon Steel / Stainless steel)
- Worm wheel material (Al. Bronze)
- Shaft, Hardware and handwheel (Stainless Steel)

Specification :

- Std Enclosure- IP-65 & IP-67
- Lubrication-High performance Grease filled

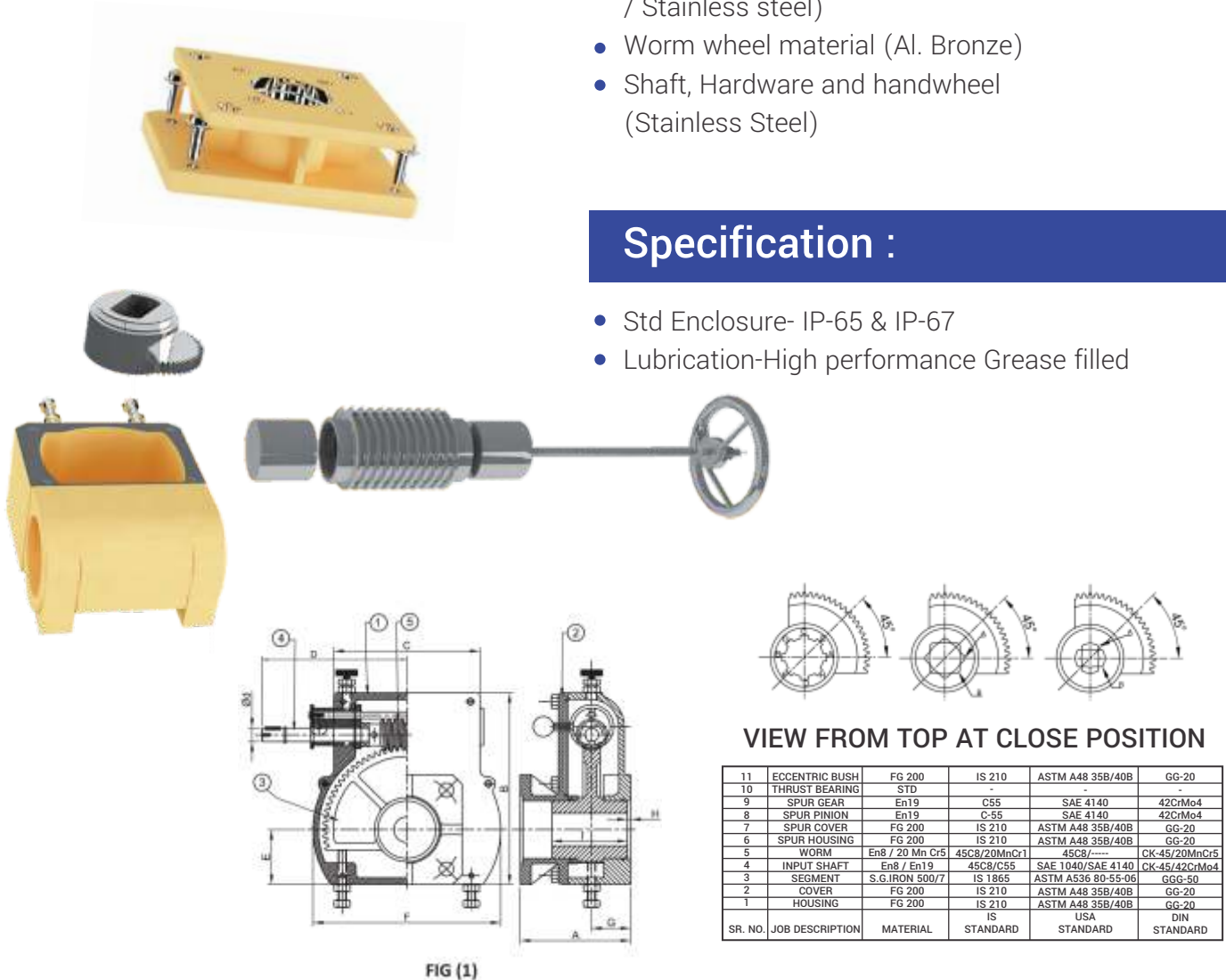
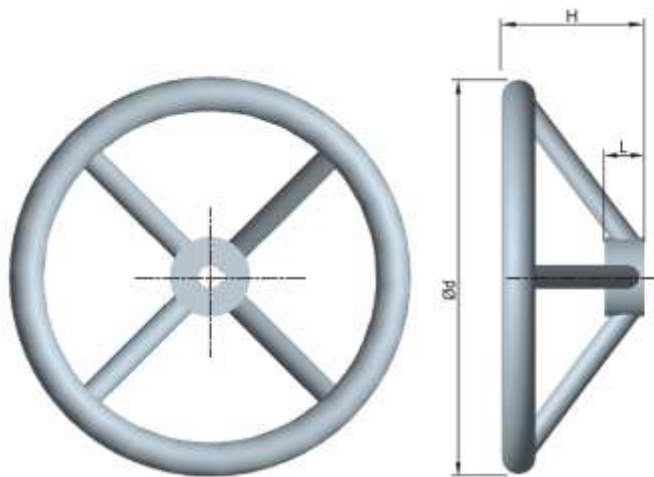


FIG (1)

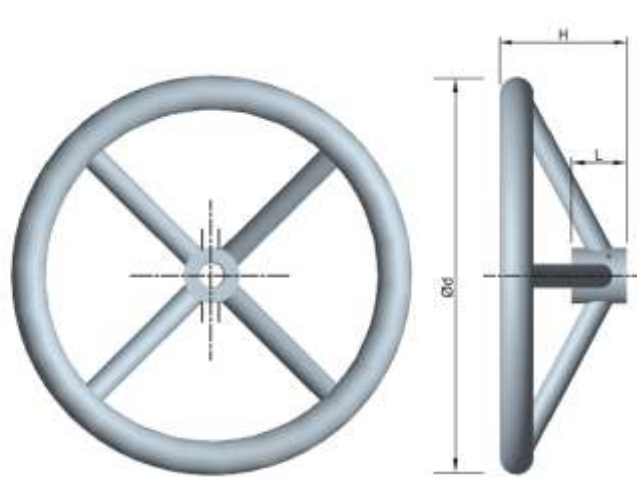
REFER FIG (1) FOR MODELS UP TO MOR 3.5
REFER FIG (2) FOR MODELS ABOVE MOR 3.5

VGM Model	Rated out put torque (Nm)	Mech Advantage +/-10%	Ratio	Turn to close	ISO 5211 Mounting	Max Drive Bore	Approx Unit Weight (KG)	Actuator MTG Flange ISO 5211	Recommended Handwheel (MM)
MOR 0.5	250	9	38:1	9.5	F05, F07	25	5	F05, F07	Ø 175
MOR 1	650	9	38:1	9.5	F07, F10, F12	30	9	F07, F10, F12	Ø 250
MOR 2	1500	17	70:1	17.5	F10, F12, F14	50	25	F10, F12, F14	Ø 400
MOR 2	1500	17	70:1	17.5	F10, F12, F14	50	28	F16	Ø 400
MOR 2.5	2500	17	80:1	20	F12, F14, F16	60	31	F12, F14, F16	Ø 500
MOR 3.5	3500	22	90:1	22.5	F16, F25	80	60	F16 F25	Ø 500
MOR 5	5000	50	264:1	66	F16, F25	80	70	F16 F25	Ø 600

'K' Series Handwheel



'H' Series Handwheel



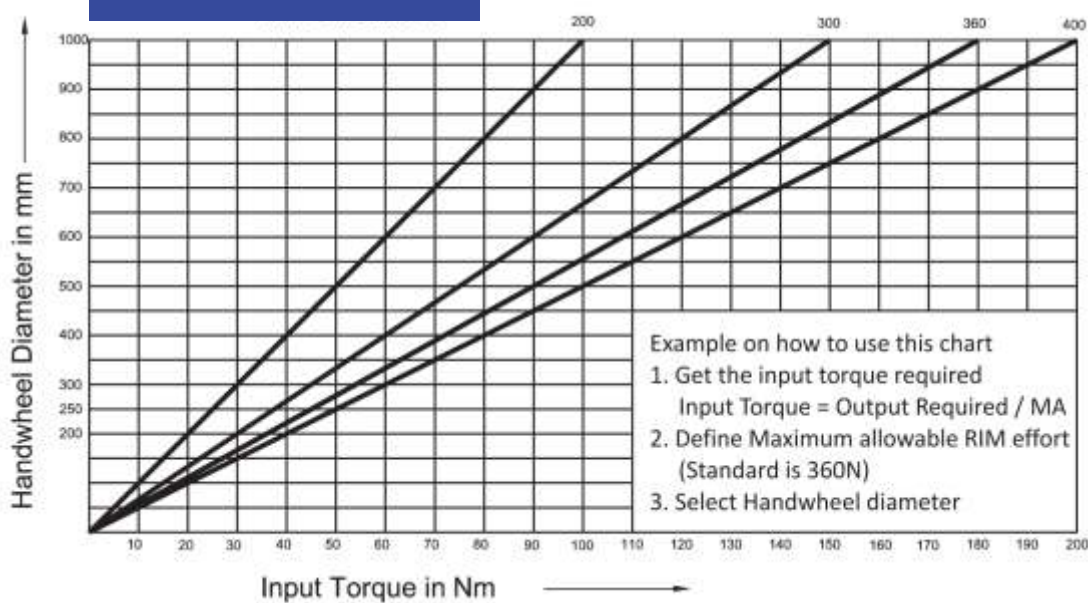
Handwheel with Keyway

Ød	H	L
175	60	19
250	90	25
350	110	30
400	130	30
500	110	30
600	130	30
750	160	30
900	180	30
1000	160	30

Handwheel with Hole / Pin

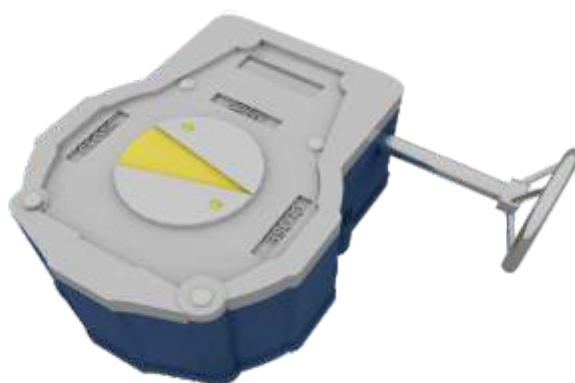
Ød	H	L
175	70	30
250	80	35
350	125	35
400	135	44
500	130	44
600	145	44
750	170	44
900	180	44
1000	180	44

RIM Effort in N





GEAR BOX





VMC- 1



VMC- 2



VMC- 3



CNC- 1



CNC- 2



CNC- 3



CNC- 4



CNC- 5



CNC- 6



CONVENTIONAL TURNING AREA



CNC AND VMC TURNING AREA



VISTAGEAR
Masters

VISTA GEAR MASTERS

Plot No. 185/F3 Rani Chennamma Nagar, 1st Stage, Belgaum - 590 006.

Work: Sy No. 123/2/3, Shinoli Bk.,
Tal: Chandgad Dist: Kolhapur 416 507.

Cell: +91 9881445606, +91 8080906335

Email: info@vistagearmasters.co.in

Website: www.vistagearmasters.co.in