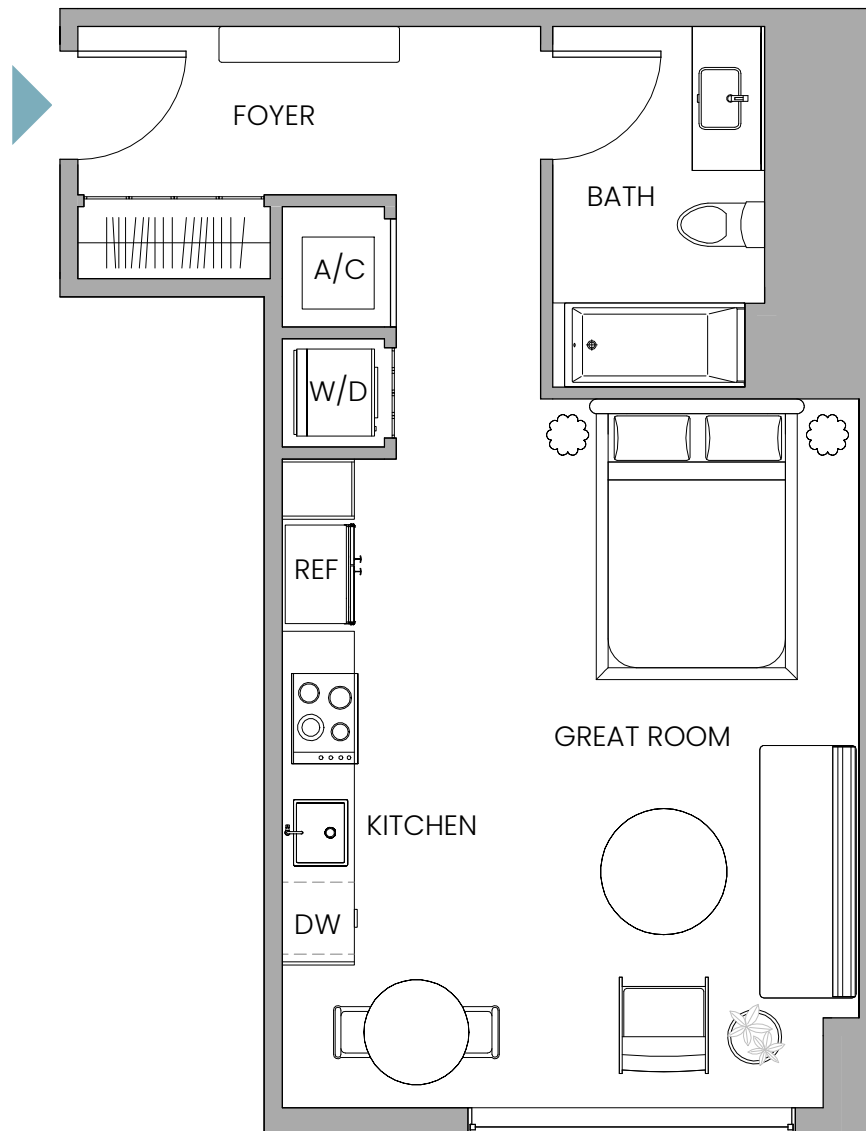


# UNIT W1

## Line 14

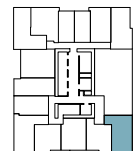
Studio | 1 Bathroom

INTERIOR 567 SQ FT / 53 SQ M



**Note**  
"Furniture Subject to Change"

FLOORS 06-09

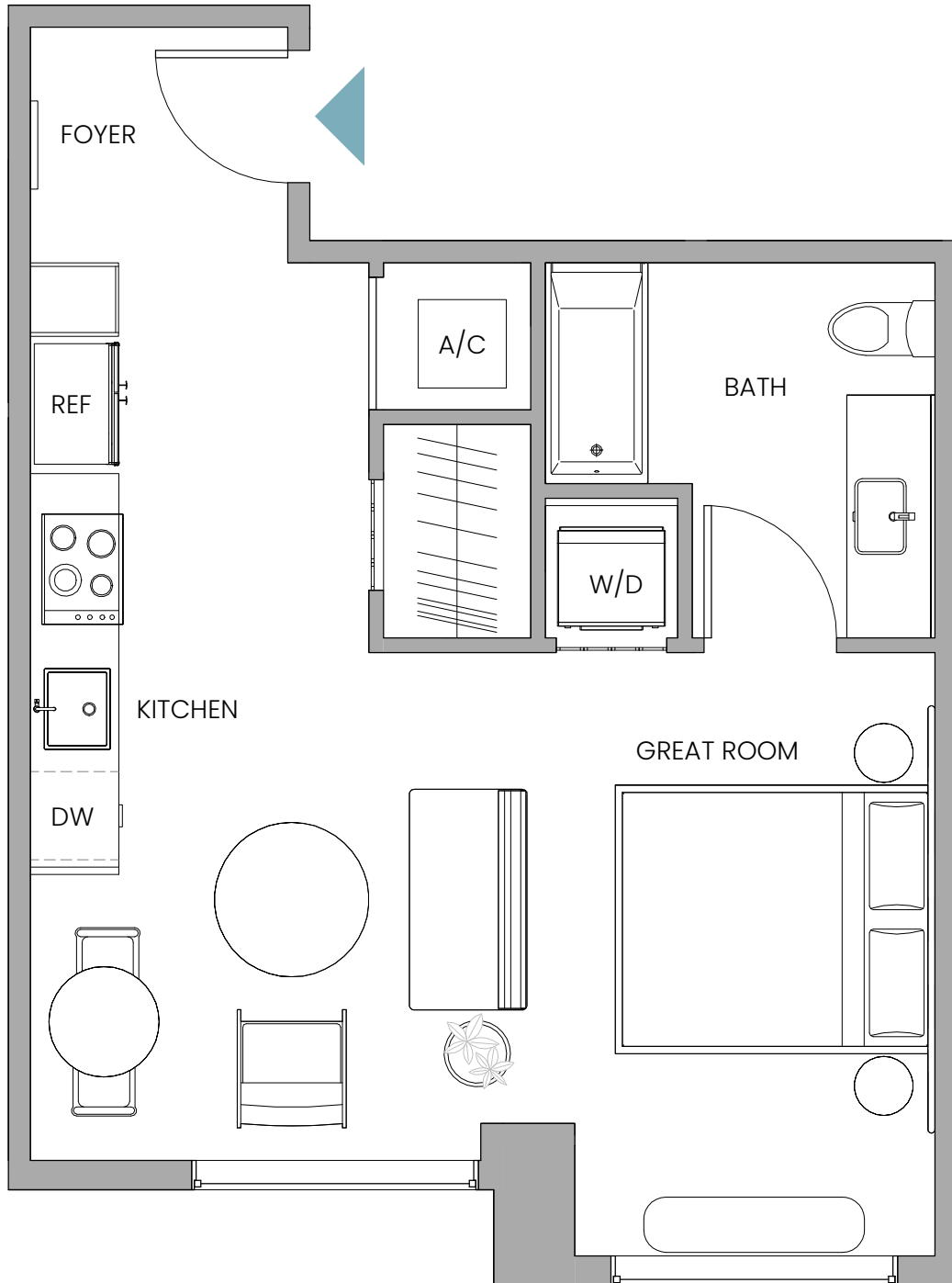


Stated dimensions are measured to the exterior boundaries of the exterior walls and the centerline of interior demising walls and in fact vary from the dimensions that would be determined by using the description and definition of the "Unit" set forth in the Declaration (which generally only includes the interior airspace between the perimeter walls and includes interior structural components). For your reference, the area of the Unit, determined in accordance with those defined unit boundaries, is 567 sq ft / 53 sq m. Note that measurements of rooms set forth on this floor plan are generally taken at the greatest points of each given room (as if the room were a perfect rectangle), without regard for any cutouts. Accordingly, the area of the actual room will typically be smaller than the product obtained by multiplying the stated length times width. All dimensions are approximate and may vary with actual construction, and all floor plans and development plans are subject to change. 🏠

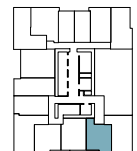
# UNIT W2

## Line 13

Studio | 1 Bathroom  
INTERIOR 526 SF / 49 SM



FLOORS 06-09



**Note**  
"Furniture Subject to Change"

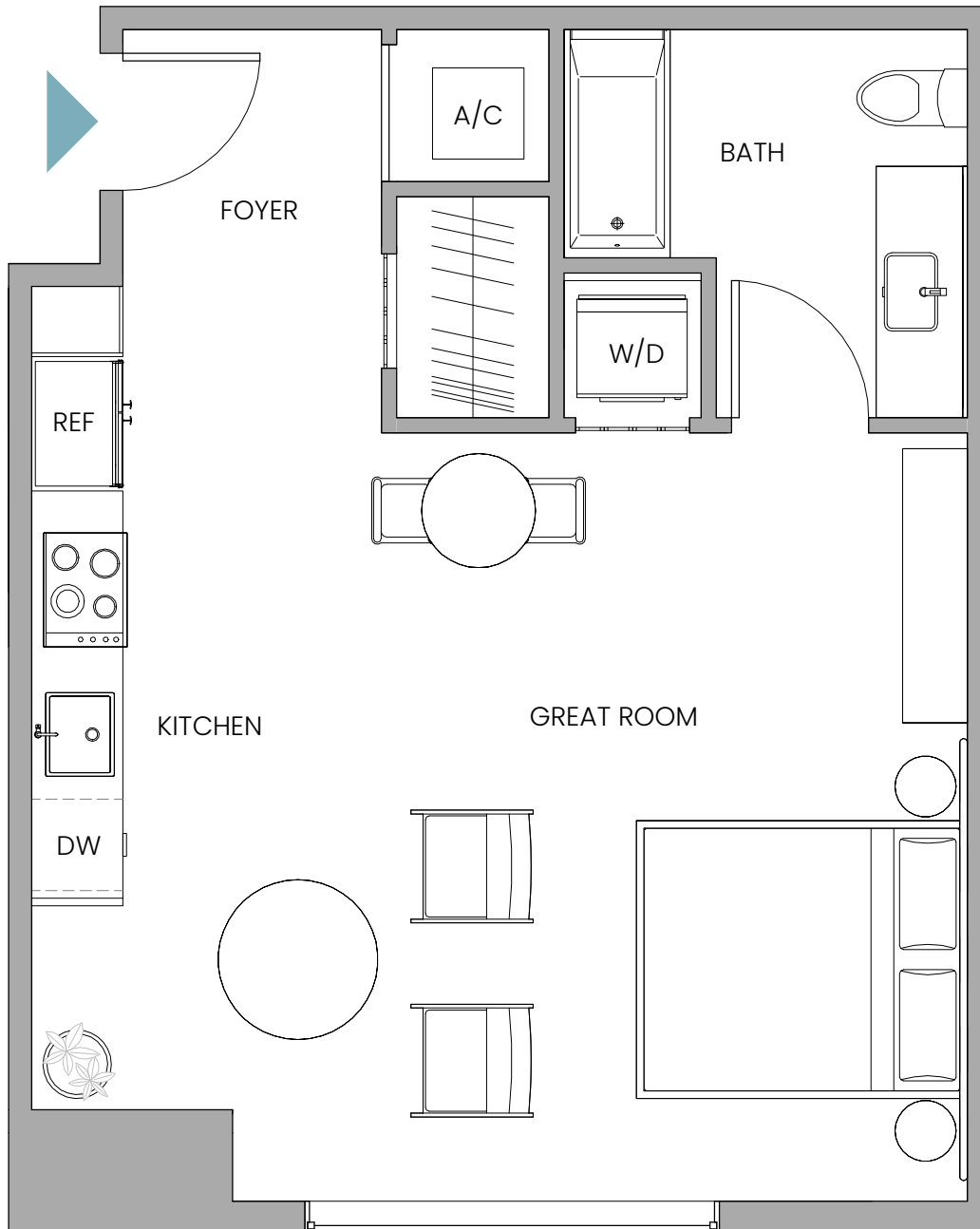
Stated dimensions are measured to the exterior boundaries of the exterior walls and the centerline of interior demising walls and in fact vary from the dimensions that would be determined by using the description and definition of the "Unit" set forth in the Declaration (which generally only includes the interior airspace between the perimeter walls and includes interior structural components). For your reference, the area of the Unit, determined in accordance with those defined unit boundaries, is 526 sq ft / 49 sq m. Note that measurements of rooms set forth on this floor plan are generally taken at the greatest points of each given room (as if the room were a perfect rectangle), without regard for any cutouts. Accordingly, the area of the actual room will typically be smaller than the product obtained by multiplying the stated length times width. All dimensions are approximate and may vary with actual construction, and all floor plans and development plans are subject to change. 🏠

# UNIT W3

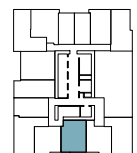
## Line 12

Studio | 1 Bathroom

INTERIOR 550 SF / 51 SQ M



FLOORS 06-09



**Note**  
"Furniture Subject to Change"

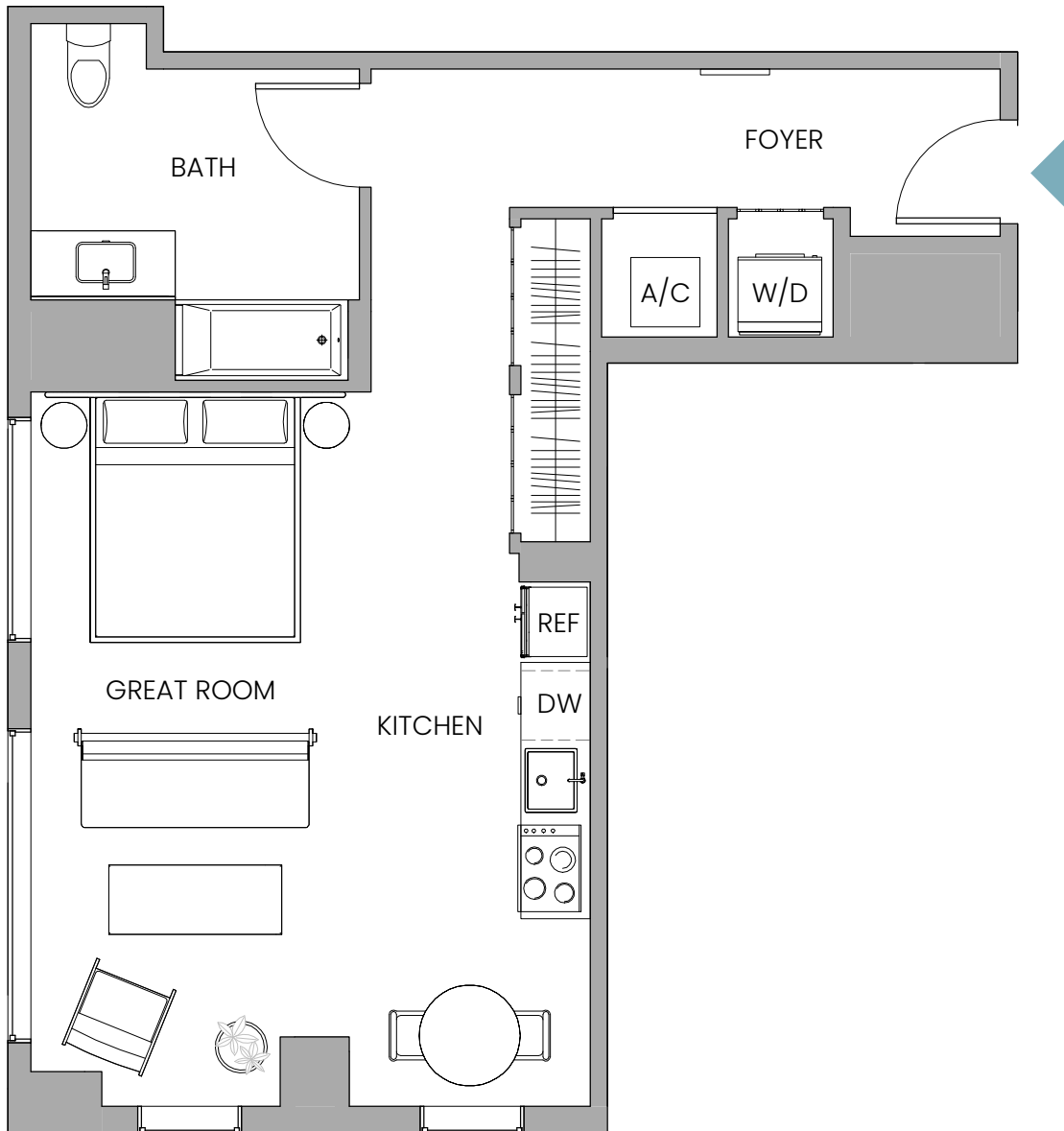
Stated dimensions are measured to the exterior boundaries of the exterior walls and the centerline of interior demising walls and in fact vary from the dimensions that would be determined by using the description and definition of the "Unit" set forth in the Declaration (which generally only includes the interior airspace between the perimeter walls and includes interior structural components). For your reference, the area of the Unit, determined in accordance with those defined unit boundaries, is 550 sq ft / 51 sq m. Note that measurements of rooms set forth on this floor plan are generally taken at the greatest points of each given room (as if the room were a perfect rectangle), without regard for any cutouts. Accordingly, the area of the actual room will typically be smaller than the product obtained by multiplying the stated length times width. All dimensions are approximate and may vary with actual construction, and all floor plans and development plans are subject to change. 🏠

# UNIT W5

## Line 10

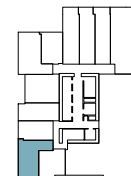
Studio | 1 Bathroom

INTERIOR 629 SQ FT / 58 SQ M

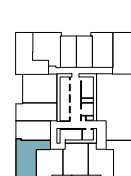


**Note**  
"Furniture Subject to Change"

FLOORS 02



FLOORS 06-09



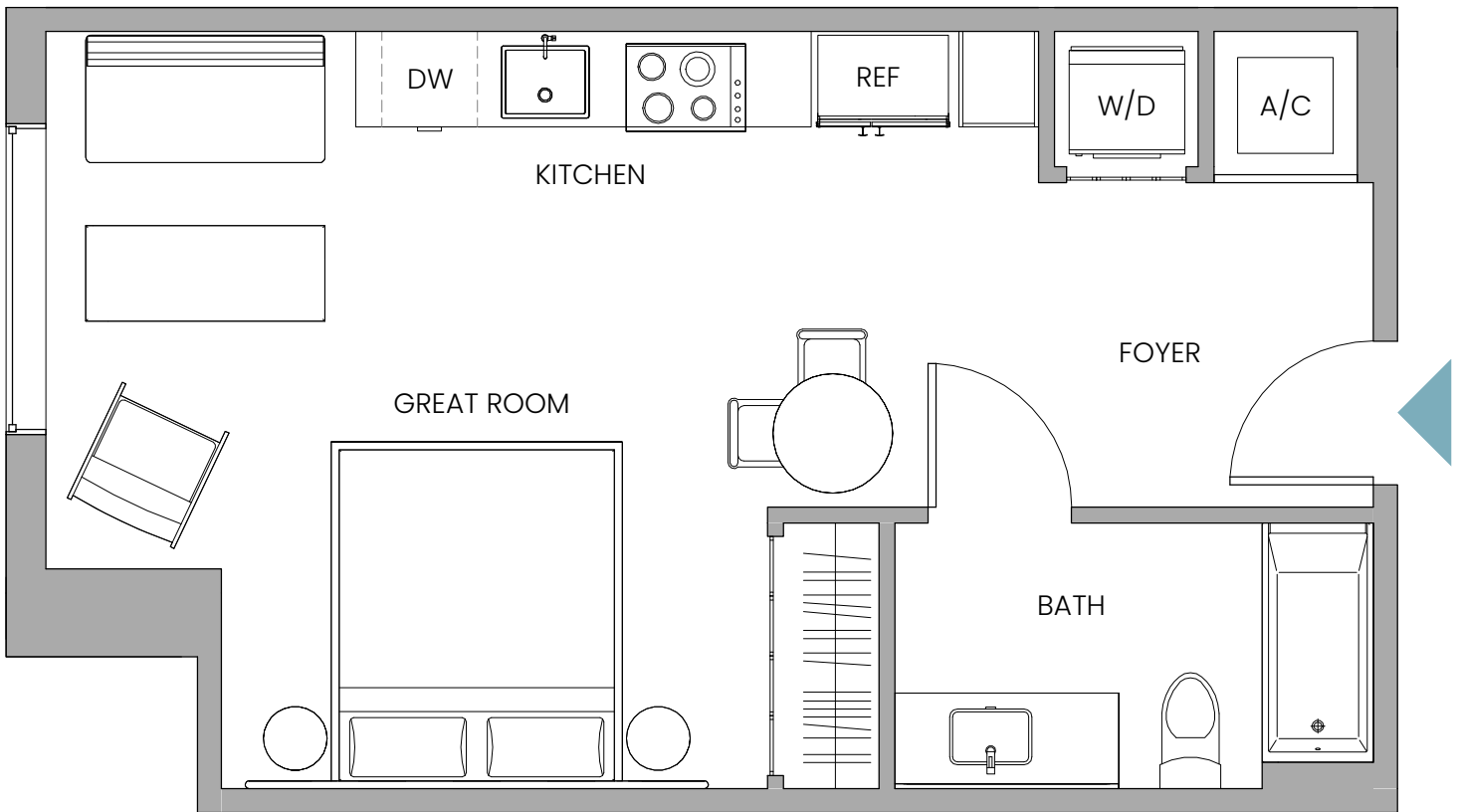
Stated dimensions are measured to the exterior boundaries of the exterior walls and the centerline of interior demising walls and in fact vary from the dimensions that would be determined by using the description and definition of the "Unit" set forth in the Declaration (which generally only includes the interior airspace between the perimeter walls and includes interior structural components). For your reference, the area of the Unit, determined in accordance with those defined unit boundaries, is 629 sq ft / 58 sq m. Note that measurements of rooms set forth on this floor plan are generally taken at the greatest points of each given room (as if the room were a perfect rectangle), without regard for any cutouts. Accordingly, the area of the actual room will typically be smaller than the product obtained by multiplying the stated length times width. All dimensions are approximate and may vary with actual construction, and all floor plans and development plans are subject to change. 🏠

# UNIT W6

## Line 09

Studio | 1 Bathroom

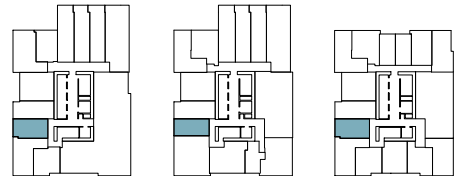
INTERIOR 457 SQ FT / 42 SQ M



FLOORS 02

FLOORS 03-05

FLOORS 06-09



**Note**  
"Furniture Subject to Change"

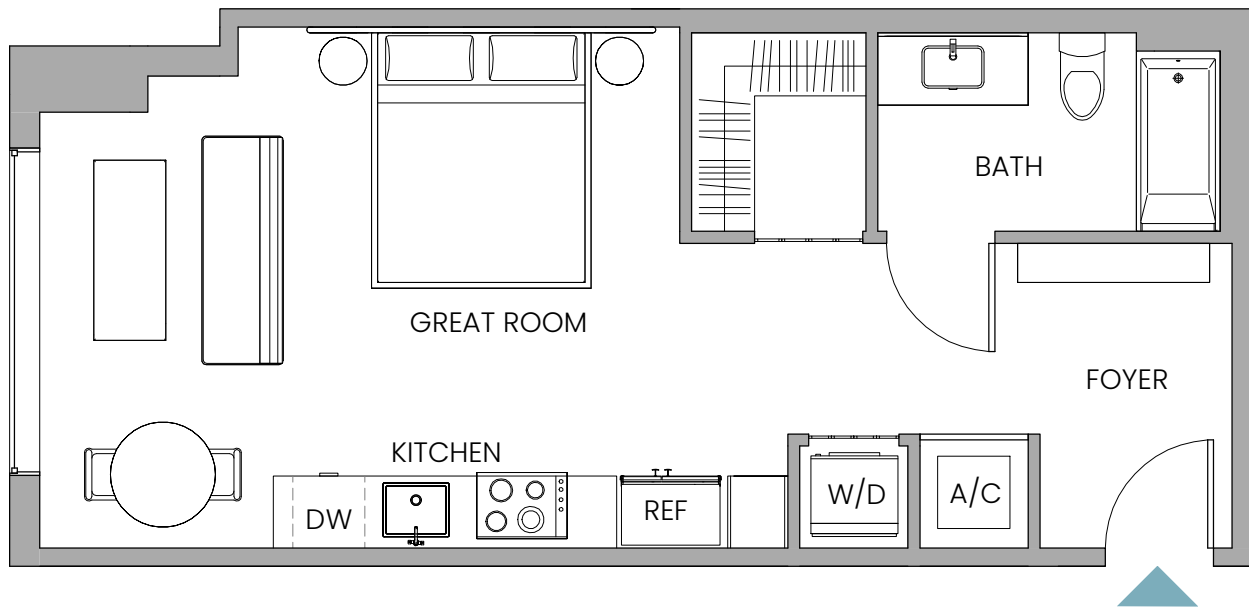
Stated dimensions are measured to the exterior boundaries of the exterior walls and the centerline of interior demising walls and in fact vary from the dimensions that would be determined by using the description and definition of the "Unit" set forth in the Declaration (which generally only includes the interior airspace between the perimeter walls and includes interior structural components). For your reference, the area of the Unit, determined in accordance with those defined unit boundaries, is 457 sq ft / 42 sq m. Note that measurements of rooms set forth on this floor plan are generally taken at the greatest points of each given room (as if the room were a perfect rectangle), without regard for any cutouts. Accordingly, the area of the actual room will typically be smaller than the product obtained by multiplying the stated length times width. All dimensions are approximate and may vary with actual construction, and all floor plans and development plans are subject to change. 🏠

# UNIT W7

## Line 08

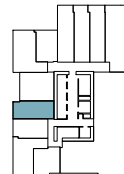
Studio | 1 Bathroom

INTERIOR 509 SQ FT / 47 SQ M

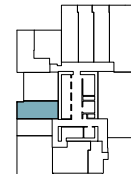


**Note**  
"Furniture Subject to Change"

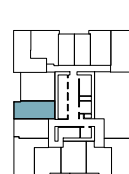
FLOORS 02



FLOORS 03-05



FLOORS 06-09

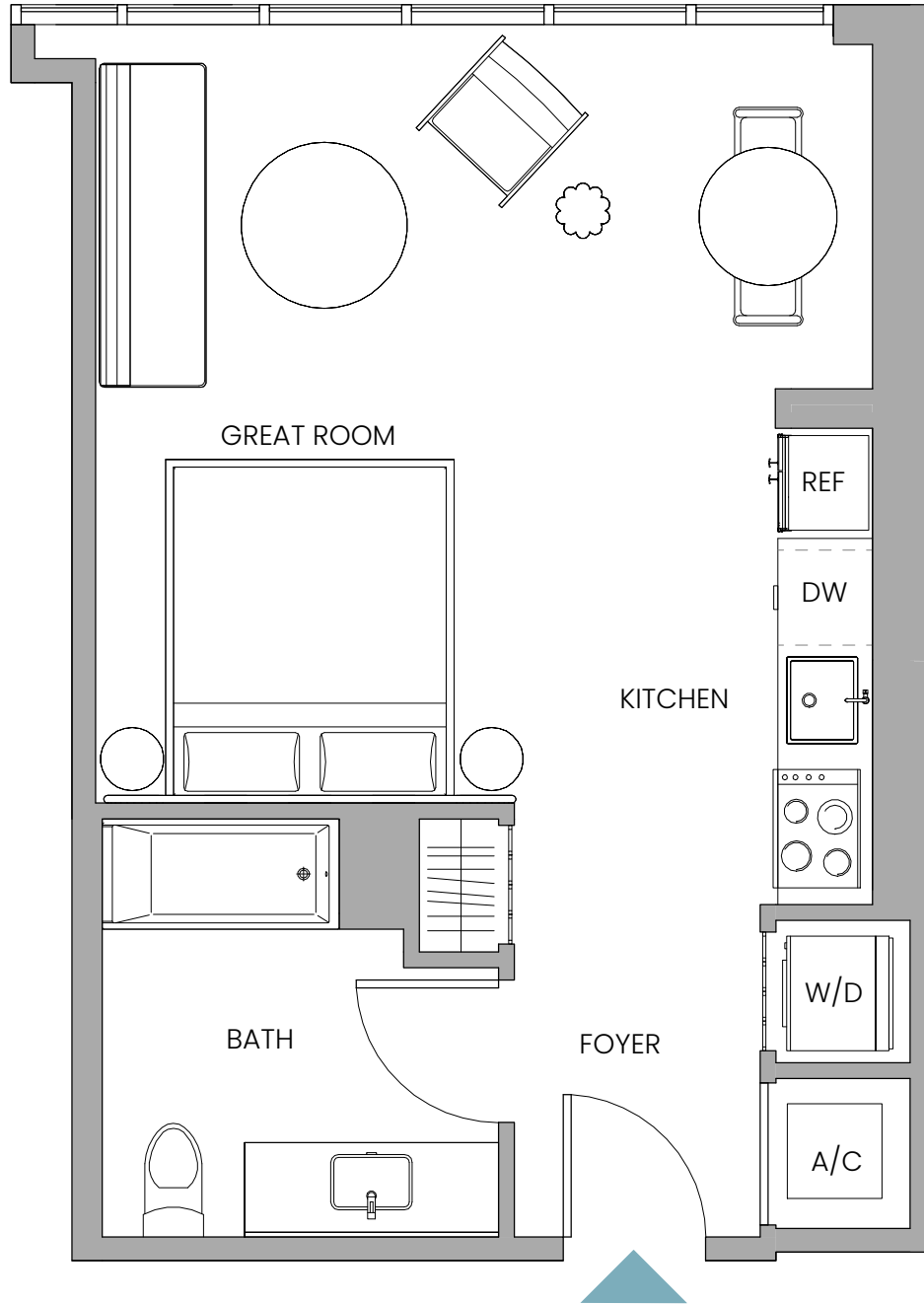


Stated dimensions are measured to the exterior boundaries of the exterior walls and the centerline of interior demising walls and in fact vary from the dimensions that would be determined by using the description and definition of the "Unit" set forth in the Declaration (which generally only includes the interior airspace between the perimeter walls and includes interior structural components). For your reference, the area of the Unit, determined in accordance with those defined unit boundaries, is 509 sq ft / 47 sq m. Note that measurements of rooms set forth on this floor plan are generally taken at the greatest points of each given room (as if the room were a perfect rectangle), without regard for any cutouts. Accordingly, the area of the actual room will typically be smaller than the product obtained by multiplying the stated length times width. All dimensions are approximate and may vary with actual construction, and all floor plans and development plans are subject to change. 🏠

# UNIT W10

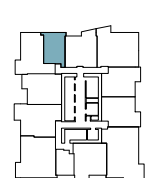
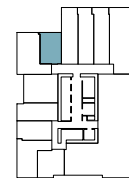
Line 05, Floors 02  
Line 04, Floors 16-41

Studio | 1 Bathroom  
INTERIOR 464 SF / 43 SM



FLOORS 02

FLOORS 16-41



**Note**  
"Furniture Subject to Change"

Stated dimensions are measured to the exterior boundaries of the exterior walls and the centerline of interior demising walls and in fact vary from the dimensions that would be determined by using the description and definition of the "Unit" set forth in the Declaration (which generally only includes the interior airspace between the perimeter walls and includes interior structural components). For your reference, the area of the Unit, determined in accordance with those defined unit boundaries, is 464 sq ft / 43 sq m. Note that measurements of rooms set forth on this floor plan are generally taken at the greatest points of each given room (as if the room were a perfect rectangle), without regard for any cutouts. Accordingly, the area of the actual room will typically be smaller than the product obtained by multiplying the stated length times width. All dimensions are approximate and may vary with actual construction, and all floor plans and development plans are subject to change. 🏠

# UNIT W11

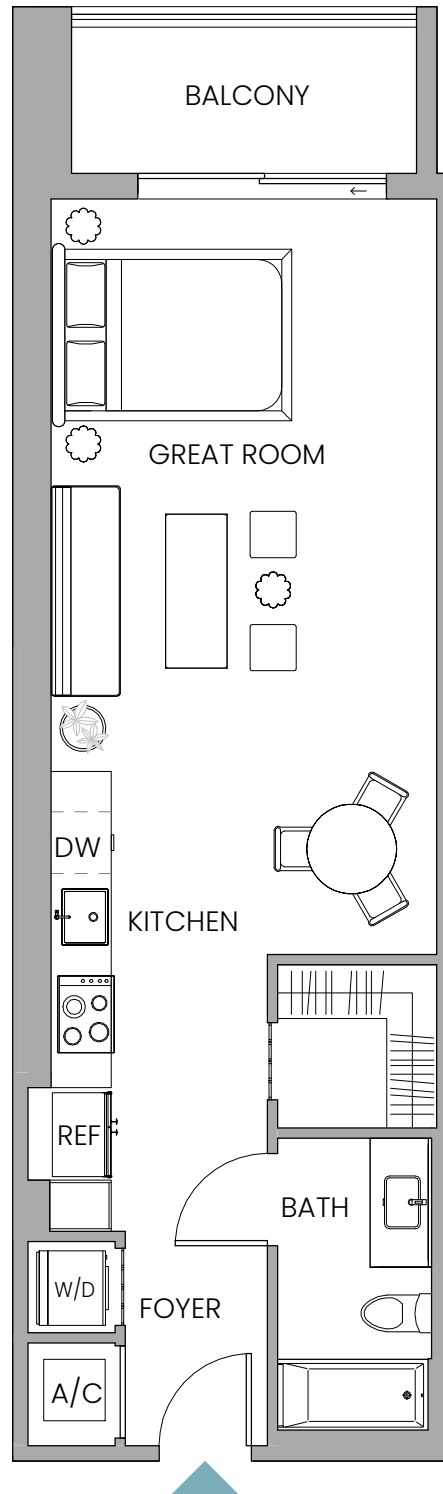
## Line 04

Studio | 1 Bathroom

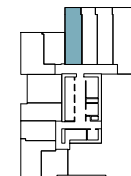
INTERIOR 580 SQ FT / 54 SQ M

EXTERIOR 72 SQ FT / 7 SQ M

TOTAL 652 SF / 61 SM



FLOORS 02



FLOORS 03-05



**Note**  
"Furniture Subject to Change"

Stated dimensions are measured to the exterior boundaries of the exterior walls and the centerline of interior demising walls and in fact vary from the dimensions that would be determined by using the description and definition of the "Unit" set forth in the Declaration (which generally only includes the interior airspace between the perimeter walls and includes interior structural components). For your reference, the area of the Unit, determined in accordance with those defined unit boundaries, is 580 sq ft / 54 sq m. Note that measurements of rooms set forth on this floor plan are generally taken at the greatest points of each given room (as if the room were a perfect rectangle), without regard for any cutouts. Accordingly, the area of the actual room will typically be smaller than the product obtained by multiplying the stated length times width. All dimensions are approximate and may vary with actual construction, and all floor plans and development plans are subject to change. 🏠



# UNIT W12

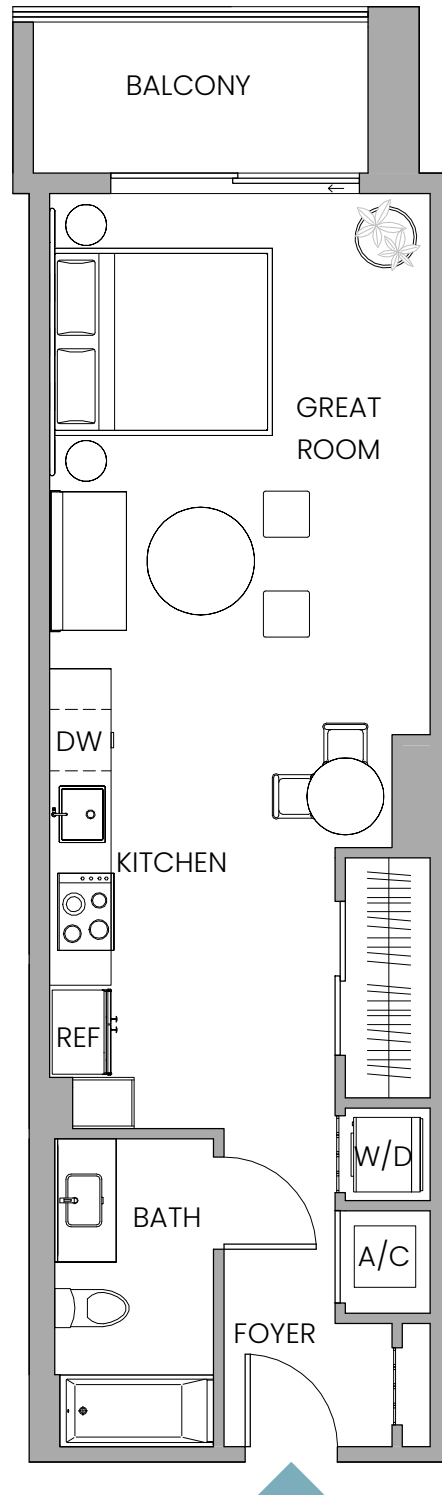
## Line 03

Studio | 1 Bathroom

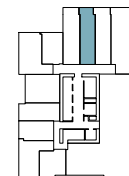
INTERIOR 538 SQ FT / 50 SQ M

EXTERIOR 66 SQ FT / 6 SM

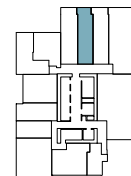
TOTAL 604 SQ FT / 56 SM



FLOORS 02



FLOORS 03-05



**Note**  
"Furniture Subject to Change"

Stated dimensions are measured to the exterior boundaries of the exterior walls and the centerline of interior demising walls and in fact vary from the dimensions that would be determined by using the description and definition of the "Unit" set forth in the Declaration (which generally only includes the interior airspace between the perimeter walls and includes interior structural components). For your reference, the area of the Unit, determined in accordance with those defined unit boundaries, is 538 sq ft / 50 sq m. Note that measurements of rooms set forth on this floor plan are generally taken at the greatest points of each given room (as if the room were a perfect rectangle), without regard for any cutouts. Accordingly, the area of the actual room will typically be smaller than the product obtained by multiplying the stated length times width. All dimensions are approximate and may vary with actual construction, and all floor plans and development plans are subject to change. 🏠

# UNIT W13

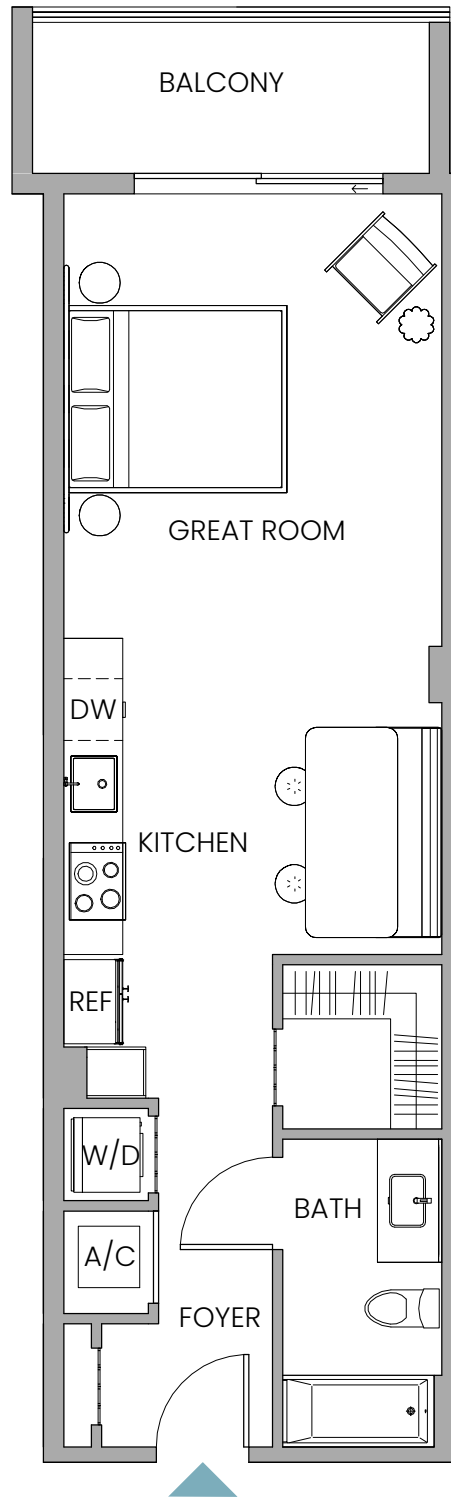
## Line 02

Studio | 1 Bathroom

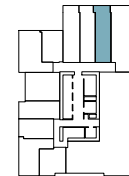
INTERIOR 536 SQ FT / 50 SQ M

EXTERIOR 76 SQ FT / 7 SQ M

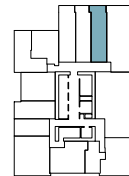
TOTAL 612 SQ FT / 57 SQ M



FLOORS 02



FLOORS 03-05



**Note**  
"Furniture Subject to Change"

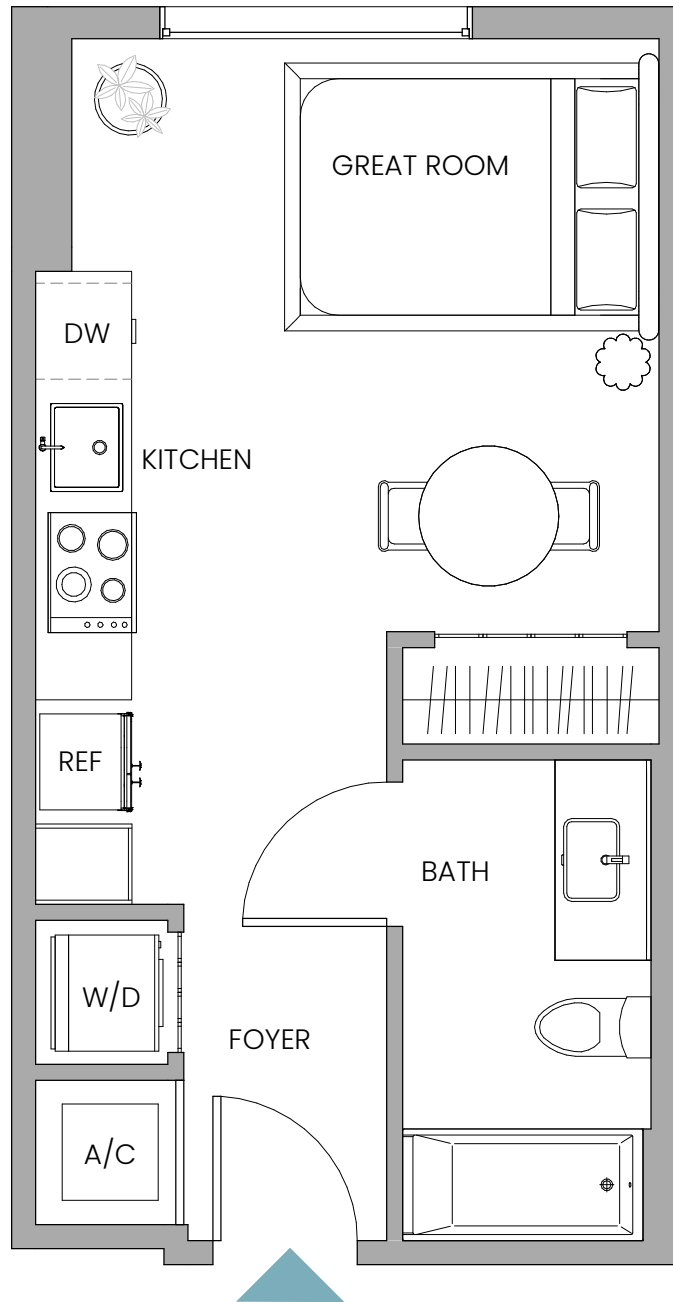
Stated dimensions are measured to the exterior boundaries of the exterior walls and the centerline of interior demising walls and in fact vary from the dimensions that would be determined by using the description and definition of the "Unit" set forth in the Declaration (which generally only includes the interior airspace between the perimeter walls and includes interior structural components). For your reference, the area of the Unit, determined in accordance with those defined unit boundaries, is 536 sq ft / 50 sq m. Note that measurements of rooms set forth on this floor plan are generally taken at the greatest points of each given room (as if the room were a perfect rectangle), without regard for any cutouts. Accordingly, the area of the actual room will typically be smaller than the product obtained by multiplying the stated length times width. All dimensions are approximate and may vary with actual construction, and all floor plans and development plans are subject to change. 🏠

# UNIT W15

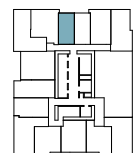
## Line 04

Studio | 1 Bathroom

INTERIOR 349 SQ FT / 32 SQ M



FLOORS 06-09



**Note**  
"Furniture Subject to Change"

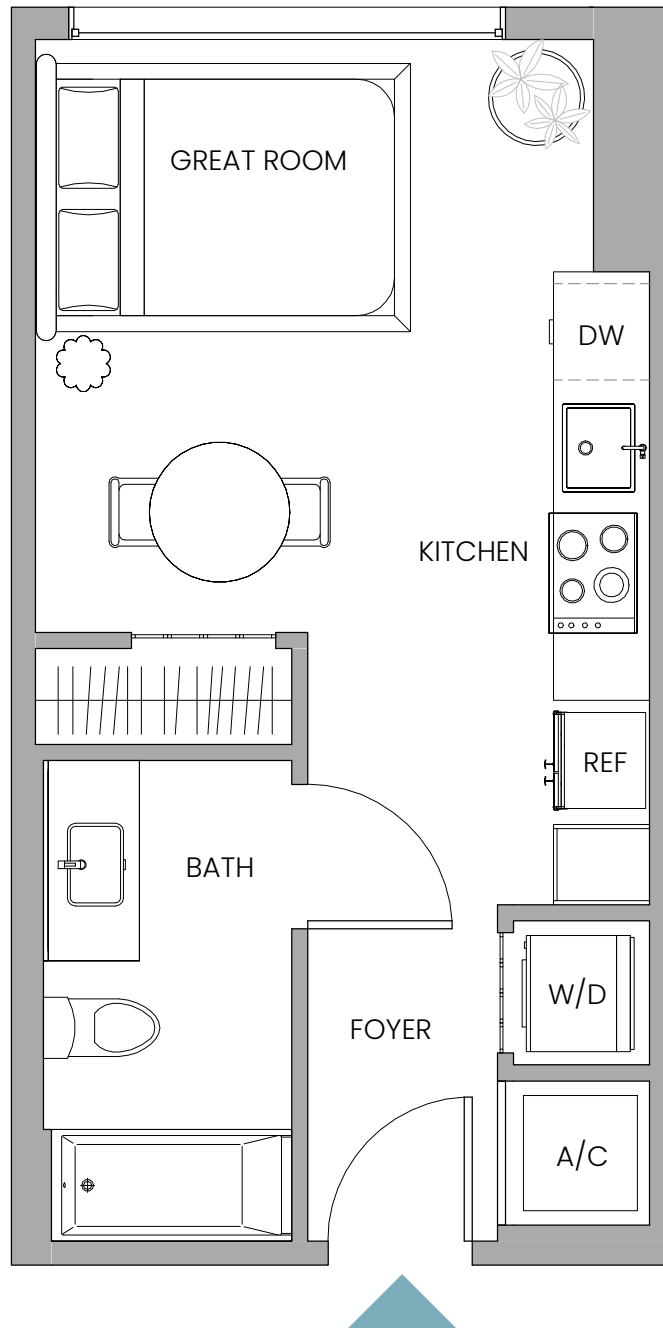
Stated dimensions are measured to the exterior boundaries of the exterior walls and the centerline of interior demising walls and in fact vary from the dimensions that would be determined by using the description and definition of the "Unit" set forth in the Declaration (which generally only includes the interior airspace between the perimeter walls and includes interior structural components). For your reference, the area of the Unit, determined in accordance with those defined unit boundaries, is 349 sq ft / 32 sq m. Note that measurements of rooms set forth on this floor plan are generally taken at the greatest points of each given room (as if the room were a perfect rectangle), without regard for any cutouts. Accordingly, the area of the actual room will typically be smaller than the product obtained by multiplying the stated length times width. All dimensions are approximate and may vary with actual construction, and all floor plans and development plans are subject to change.

# UNIT W16

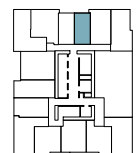
## Line 03

Studio | 1 Bathroom

INTERIOR 343 SQ FT / 32 SQ M



FLOORS 06-09



**Note**  
"Furniture Subject to Change"

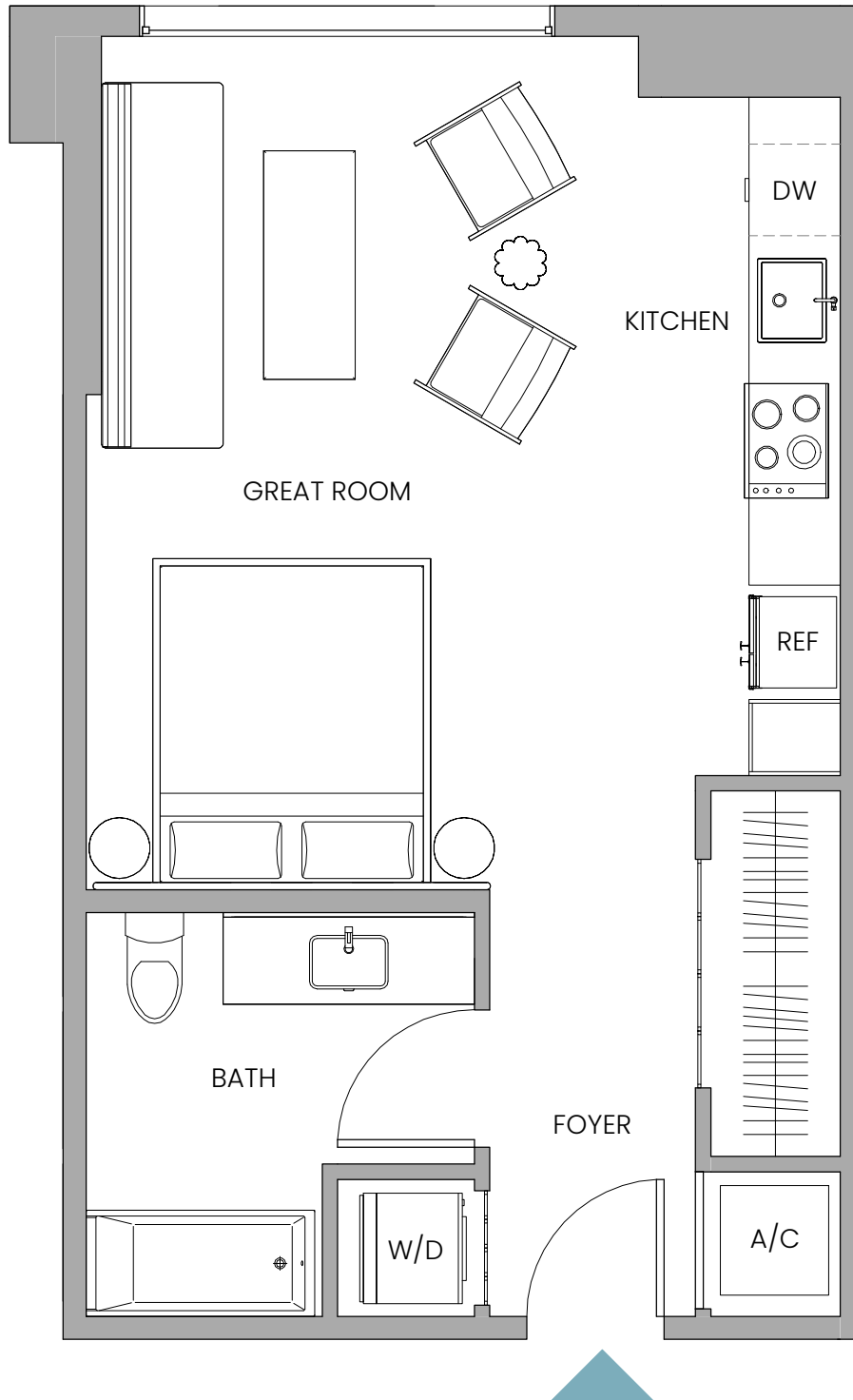
Stated dimensions are measured to the exterior boundaries of the exterior walls and the centerline of interior demising walls and in fact vary from the dimensions that would be determined by using the description and definition of the "Unit" set forth in the Declaration (which generally only includes the interior airspace between the perimeter walls and includes interior structural components). For your reference, the area of the Unit, determined in accordance with those defined unit boundaries, is 343 sq ft / 32 sq m. Note that measurements of rooms set forth on this floor plan are generally taken at the greatest points of each given room (as if the room were a perfect rectangle), without regard for any cutouts. Accordingly, the area of the actual room will typically be smaller than the product obtained by multiplying the stated length times width. All dimensions are approximate and may vary with actual construction, and all floor plans and development plans are subject to change. 🏠

# UNIT W17

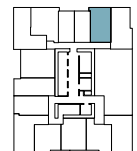
## Line 02

Studio | 1 Bathroom

INTERIOR 496 SQ FT / 46 SQ M



FLOORS 06-09



**Note**  
"Furniture Subject to Change"

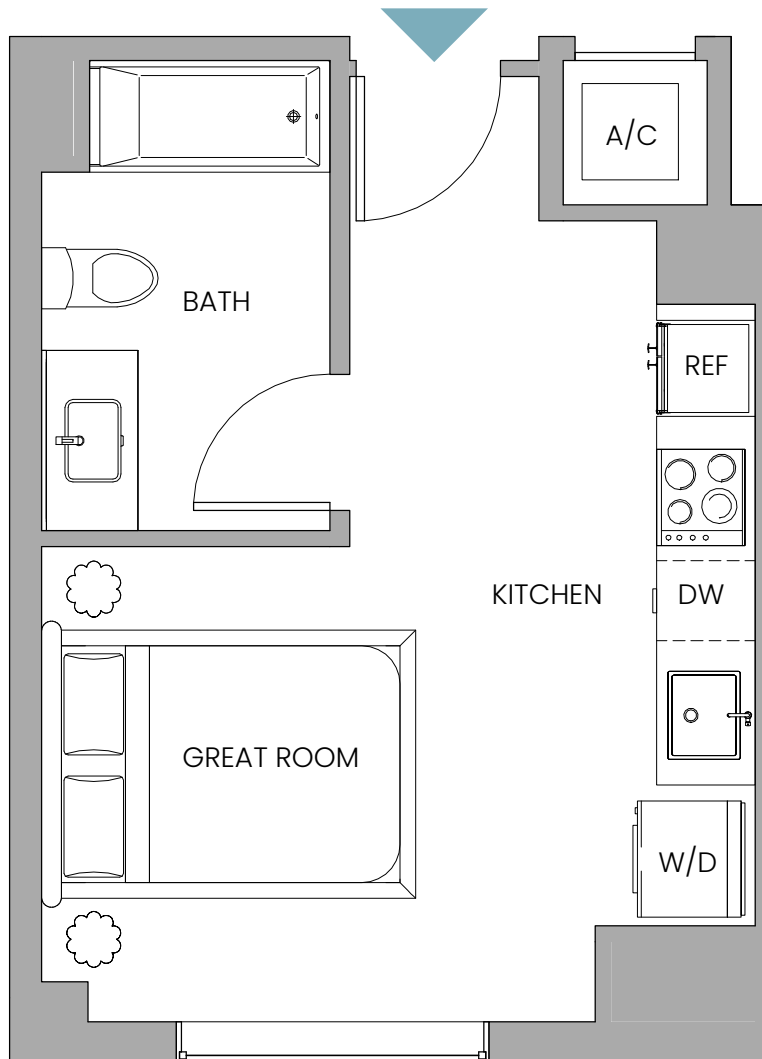
Stated dimensions are measured to the exterior boundaries of the exterior walls and the centerline of interior demising walls and in fact vary from the dimensions that would be determined by using the description and definition of the "Unit" set forth in the Declaration (which generally only includes the interior airspace between the perimeter walls and includes interior structural components). For your reference, the area of the Unit, determined in accordance with those defined unit boundaries, is 496 sq ft / 46 sq m. Note that measurements of rooms set forth on this floor plan are generally taken at the greatest points of each given room (as if the room were a perfect rectangle), without regard for any cutouts. Accordingly, the area of the actual room will typically be smaller than the product obtained by multiplying the stated length times width. All dimensions are approximate and may vary with actual construction, and all floor plans and development plans are subject to change. 🏠

# UNIT W19

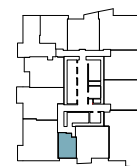
## Line 09

Studio | 1 Bathroom

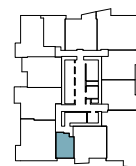
INTERIOR 340 SQ FT / 32 SQ M



FLOORS 11-15



FLOORS 16-41



**Note**  
"Furniture Subject to Change"

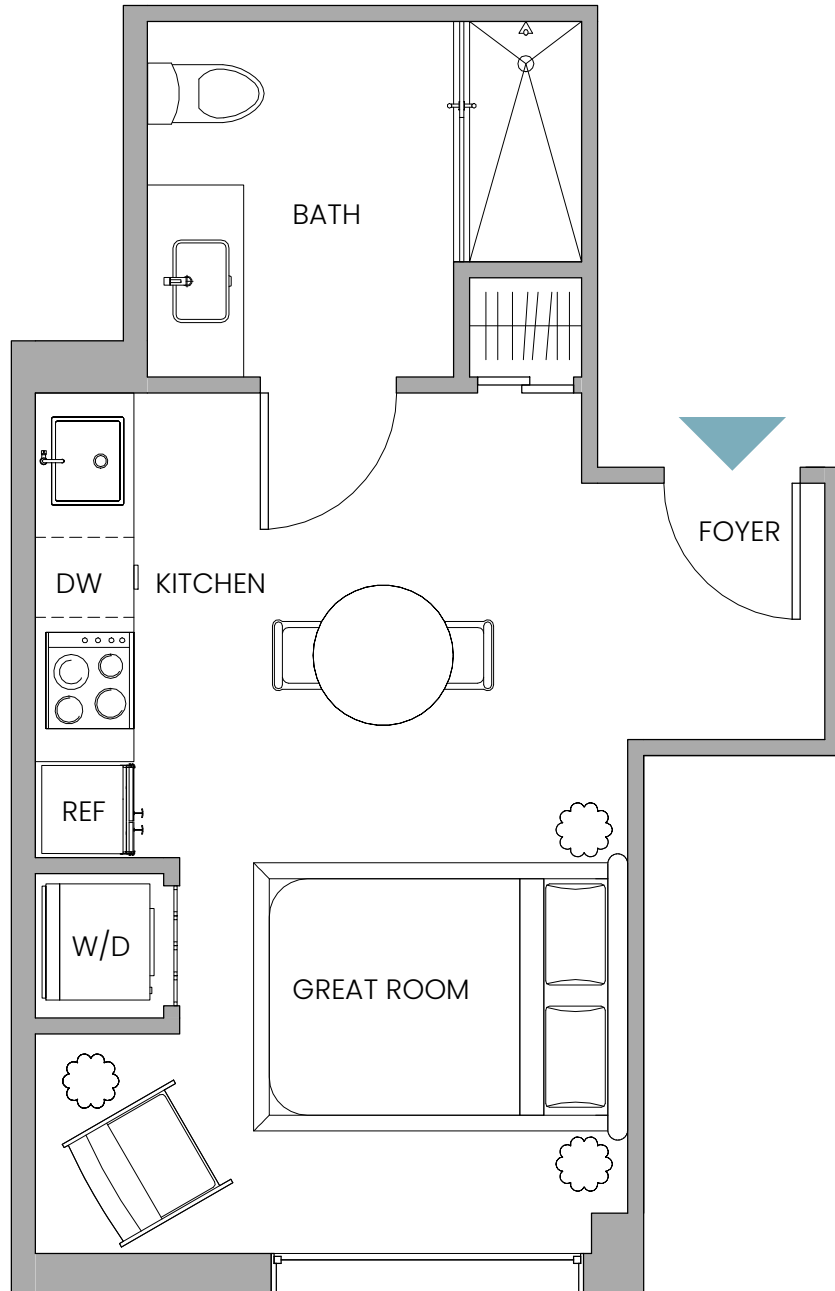
Stated dimensions are measured to the exterior boundaries of the exterior walls and the centerline of interior demising walls and in fact vary from the dimensions that would be determined by using the description and definition of the "Unit" set forth in the Declaration (which generally only includes the interior airspace between the perimeter walls and includes interior structural components). For your reference, the area of the Unit, determined in accordance with those defined unit boundaries, is 340 sq ft / 32 sq m. Note that measurements of rooms set forth on this floor plan are generally taken at the greatest points of each given room (as if the room were a perfect rectangle), without regard for any cutouts. Accordingly, the area of the actual room will typically be smaller than the product obtained by multiplying the stated length times width. All dimensions are approximate and may vary with actual construction, and all floor plans and development plans are subject to change. 🏠

# UNIT W21

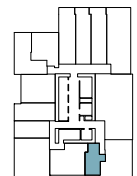
## Line 12

Studio | 1 Bathroom

INTERIOR 339 SQ FT / 31 SQ M



FLOORS 03-05



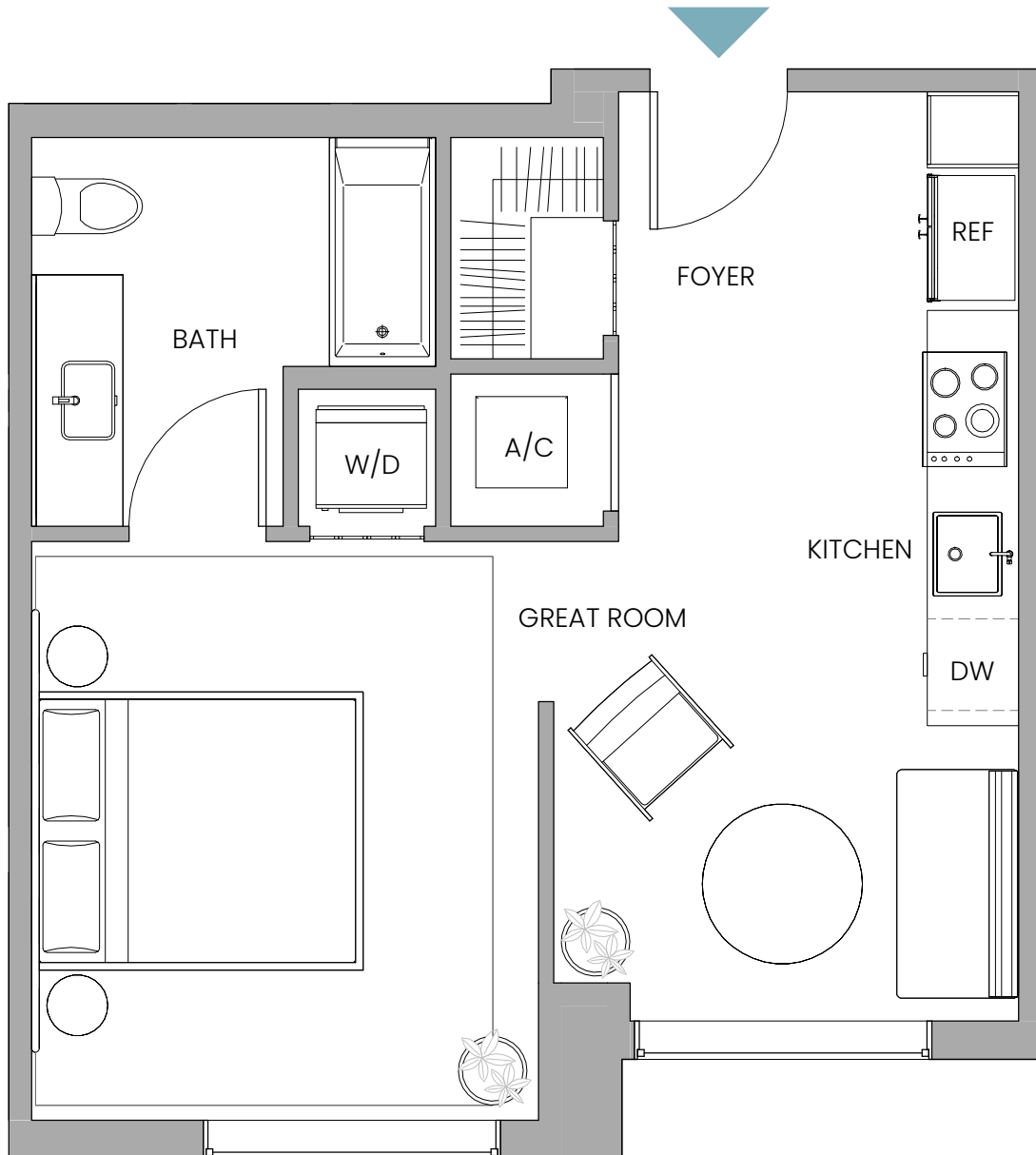
**Note**  
"Furniture Subject to Change"

Stated dimensions are measured to the exterior boundaries of the exterior walls and the centerline of interior demising walls and in fact vary from the dimensions that would be determined by using the description and definition of the "Unit" set forth in the Declaration (which generally only includes the interior airspace between the perimeter walls and includes interior structural components). For your reference, the area of the Unit, determined in accordance with those defined unit boundaries, is 339 sq ft / 31 sq m. Note that measurements of rooms set forth on this floor plan are generally taken at the greatest points of each given room (as if the room were a perfect rectangle), without regard for any cutouts. Accordingly, the area of the actual room will typically be smaller than the product obtained by multiplying the stated length times width. All dimensions are approximate and may vary with actual construction, and all floor plans and development plans are subject to change. 🏠

# UNIT W4J

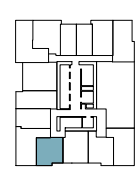
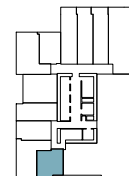
## Line 11

Jr 1 Bedroom | 1 Bathroom  
INTERIOR 489 SQ FT / 45 SQ M



FLOORS 02

FLOORS 06-09



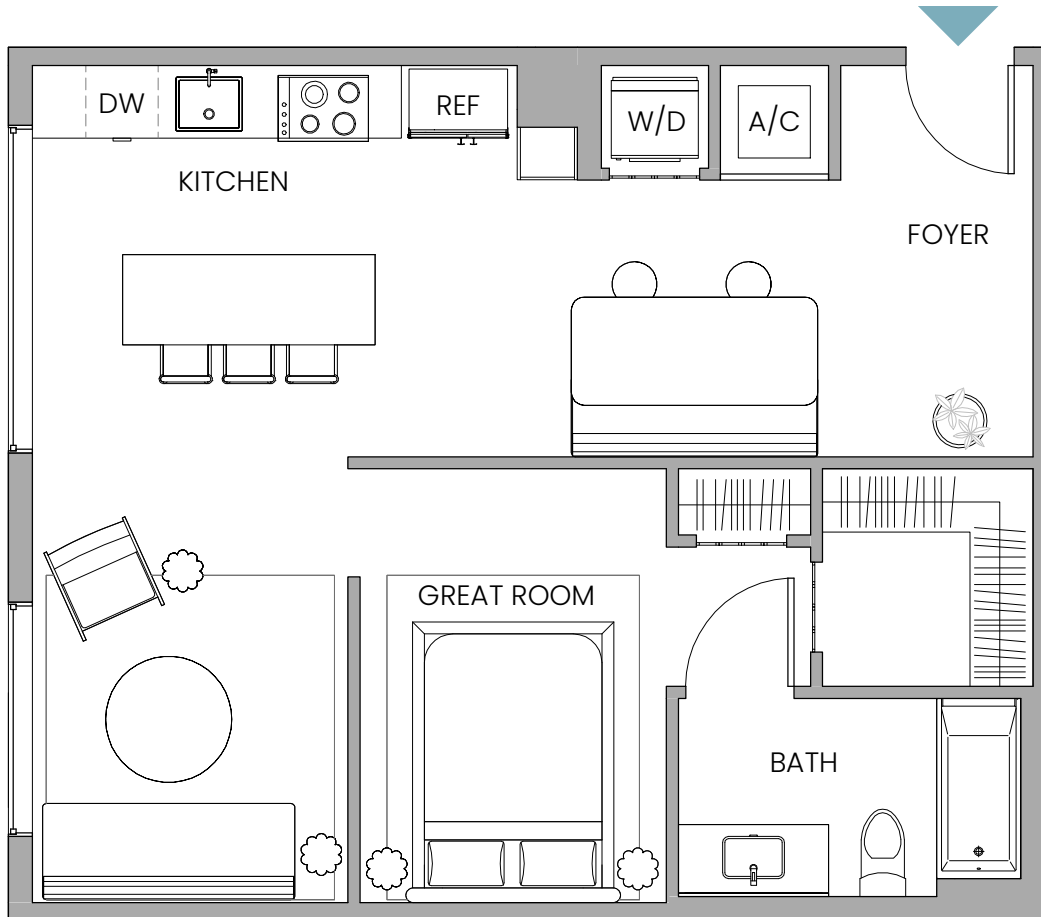
Stated dimensions are measured to the exterior boundaries of the exterior walls and the centerline of interior demising walls and in fact vary from the dimensions that would be determined by using the description and definition of the "Unit" set forth in the Declaration (which generally only includes the interior airspace between the perimeter walls and includes interior structural components). For your reference, the area of the Unit, determined in accordance with those defined unit boundaries, is 489 sq ft / 45 sq m. Note that measurements of rooms set forth on this floor plan are generally taken at the greatest points of each given room (as if the room were a perfect rectangle), without regard for any cutouts. Accordingly, the area of the actual room will typically be smaller than the product obtained by multiplying the stated length times width. All dimensions are approximate and may vary with actual construction, and all floor plans and development plans are subject to change. 🏠



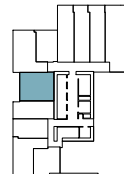
# UNIT W8J

## Line 07

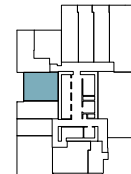
Jr 1 Bedroom | 1 Bathroom  
INTERIOR 680 SQ FT / 63 SQ M



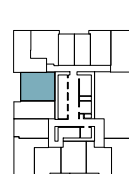
FLOORS 02



FLOORS 03-05



FLOORS 06-09

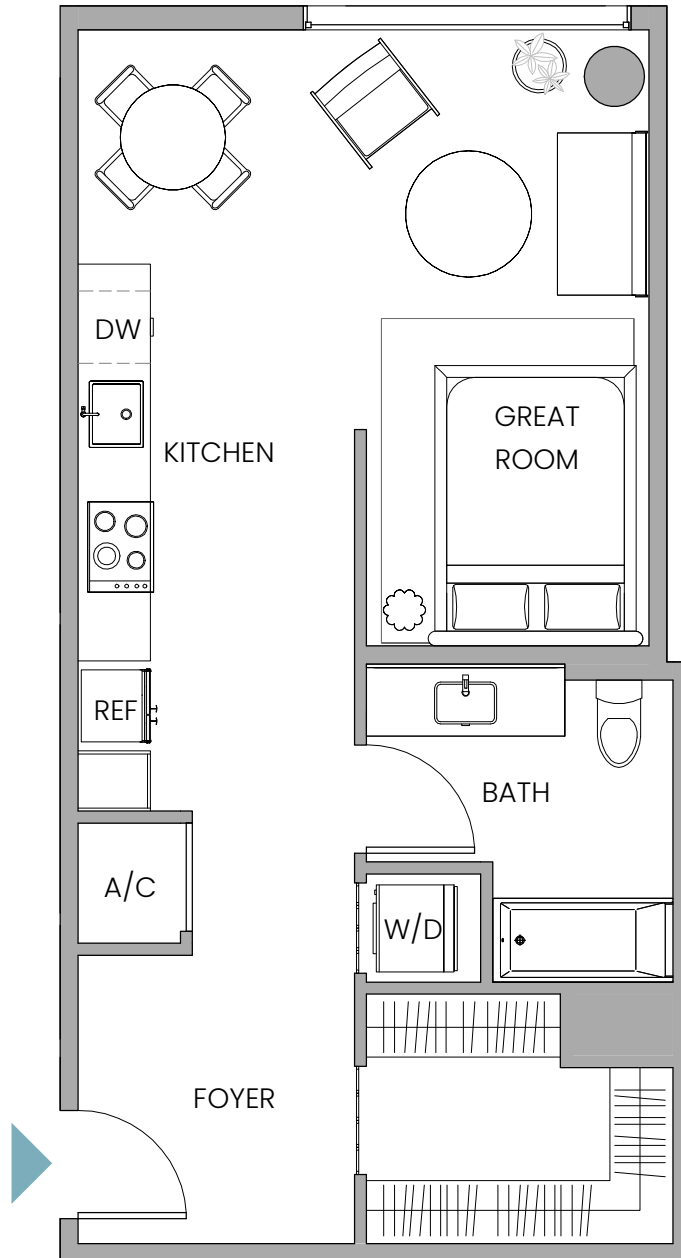


Stated dimensions are measured to the exterior boundaries of the exterior walls and the centerline of interior demising walls and in fact vary from the dimensions that would be determined by using the description and definition of the "Unit" set forth in the Declaration (which generally only includes the interior airspace between the perimeter walls and includes interior structural components). For your reference, the area of the Unit, determined in accordance with those defined unit boundaries, is 680 sq ft / 63 sq m. Note that measurements of rooms set forth on this floor plan are generally taken at the greatest points of each given room (as if the room were a perfect rectangle), without regard for any cutouts. Accordingly, the area of the actual room will typically be smaller than the product obtained by multiplying the stated length times width. All dimensions are approximate and may vary with actual construction, and all floor plans and development plans are subject to change. 🏠

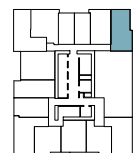
# UNIT W18J

## Line 01

Jr 1 Bedroom | 1 Bathroom  
INTERIOR 584 SQ FT / 54 SQ M



FLOORS 06-09



Stated dimensions are measured to the exterior boundaries of the exterior walls and the centerline of interior demising walls and in fact vary from the dimensions that would be determined by using the description and definition of the "Unit" set forth in the Declaration (which generally only includes the interior airspace between the perimeter walls and includes interior structural components). For your reference, the area of the Unit, determined in accordance with those defined unit boundaries, is 584 sq ft / 54 sq m. Note that measurements of rooms set forth on this floor plan are generally taken at the greatest points of each given room (as if the room were a perfect rectangle), without regard for any cutouts. Accordingly, the area of the actual room will typically be smaller than the product obtained by multiplying the stated length times width. All dimensions are approximate and may vary with actual construction, and all floor plans and development plans are subject to change. 🏠

# UNIT WA1

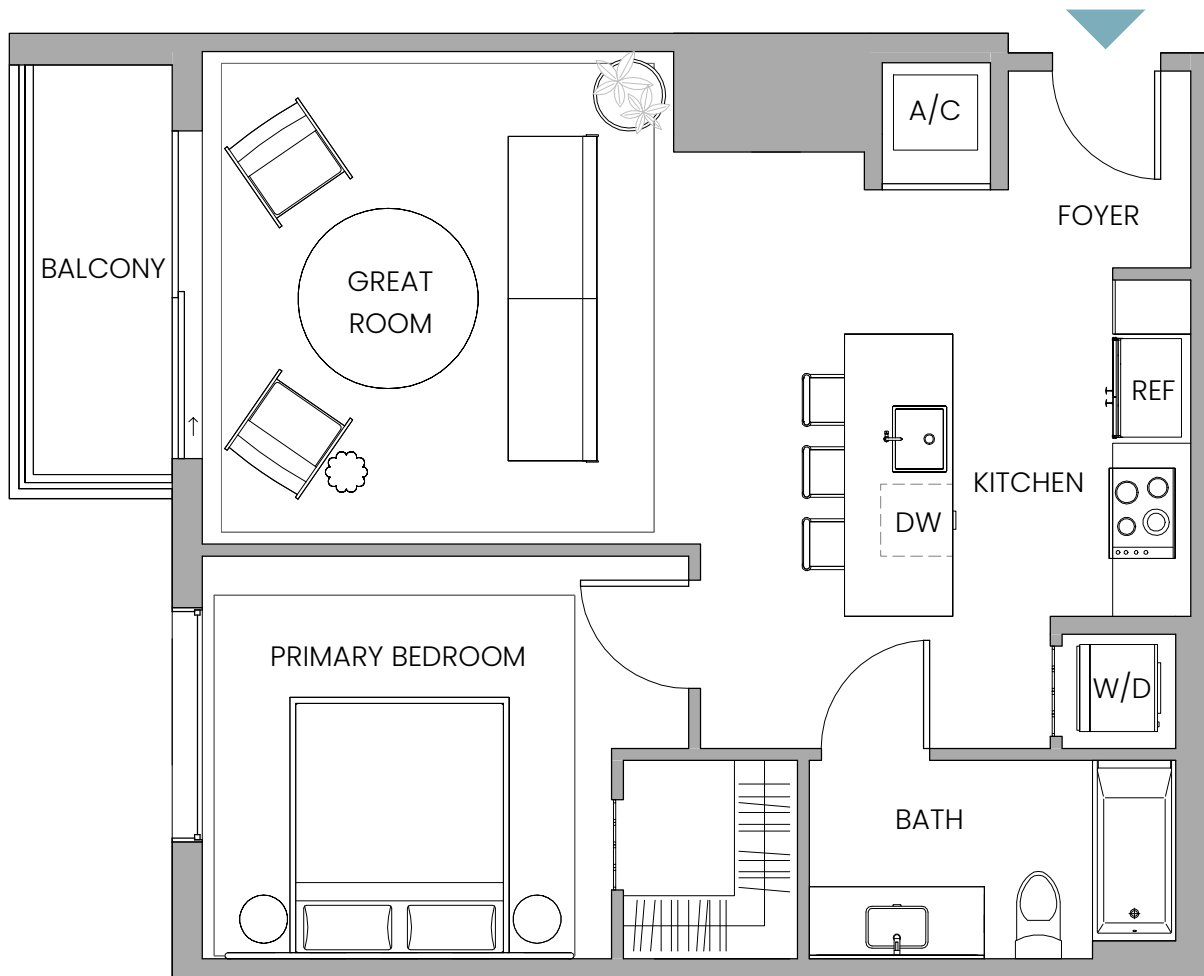
## Line 06

1 Bedroom | 1 Bathroom

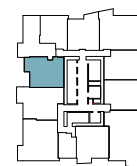
INTERIOR 734 SQ FT / 68 SQ M

EXTERIOR 54 SQ FT / 5 SQ M

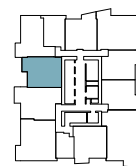
TOTAL 788 SQ FT / 73 SQ M



FLOORS 11-15



FLOORS 16-41



Stated dimensions are measured to the exterior boundaries of the exterior walls and the centerline of interior demising walls and in fact vary from the dimensions that would be determined by using the description and definition of the "Unit" set forth in the Declaration (which generally only includes the interior airspace between the perimeter walls and includes interior structural components). For your reference, the area of the Unit, determined in accordance with those defined unit boundaries, is 734 sq ft / 68 sq m. Note that measurements of rooms set forth on this floor plan are generally taken at the greatest points of each given room (as if the room were a perfect rectangle), without regard for any cutouts. Accordingly, the area of the actual room will typically be smaller than the product obtained by multiplying the stated length times width. All dimensions are approximate and may vary with actual construction, and all floor plans and development plans are subject to change. 🏠

# UNIT WA2

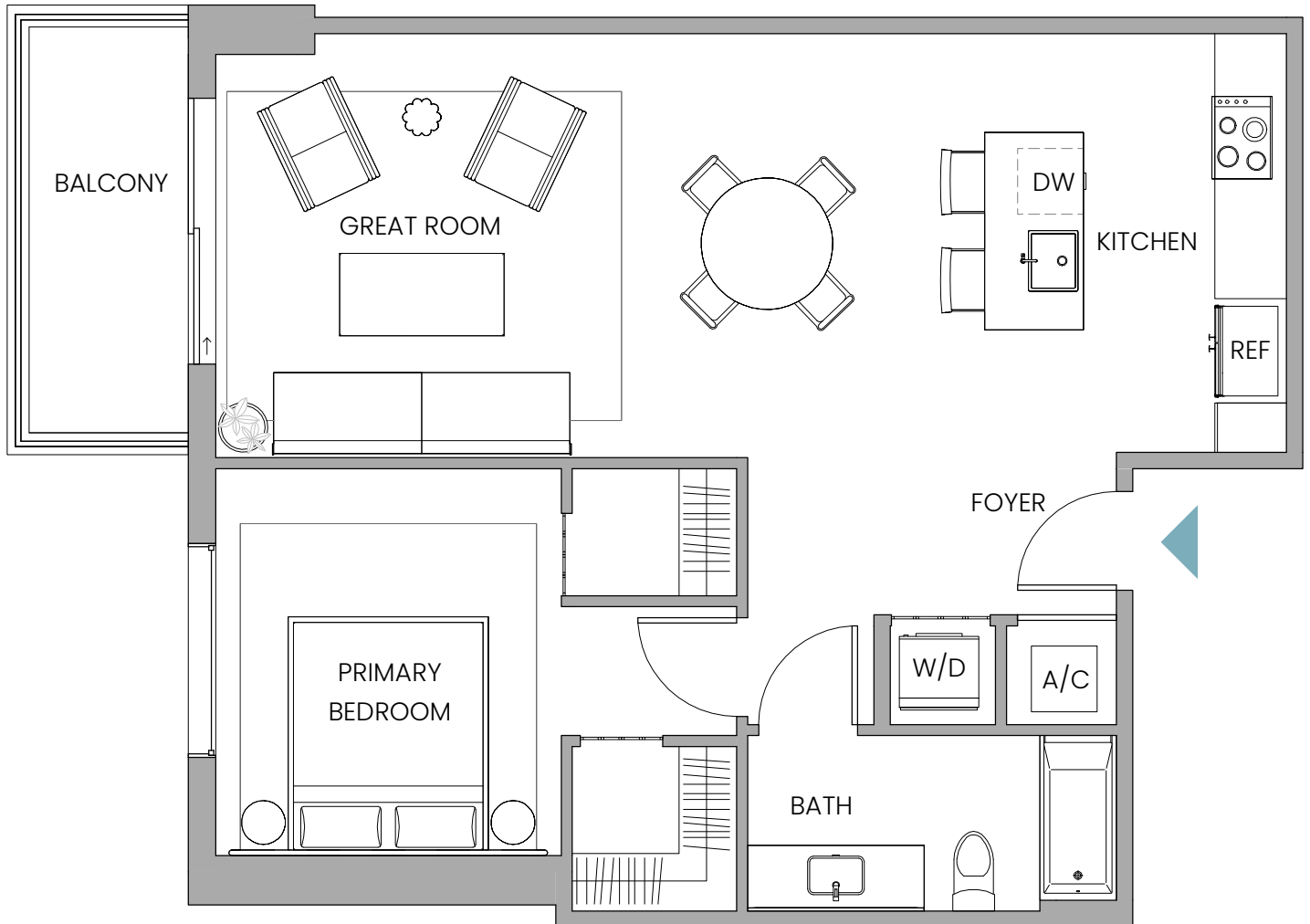
## Line 07

1 Bedroom | 1 Bathroom

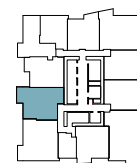
INTERIOR 844 SQ FT / 78 SQ M

EXTERIOR 75 SQ FT / 7 SQ M

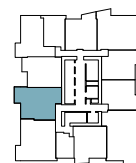
TOTAL 919 SQ FT / 85 SQ M



FLOORS 11-15



FLOORS 16-41



Stated dimensions are measured to the exterior boundaries of the exterior walls and the centerline of interior demising walls and in fact vary from the dimensions that would be determined by using the description and definition of the "Unit" set forth in the Declaration (which generally only includes the interior airspace between the perimeter walls and includes interior structural components). For your reference, the area of the Unit, determined in accordance with those defined unit boundaries, is 844 sq ft / 78 sq m. Note that measurements of rooms set forth on this floor plan are generally taken at the greatest points of each given room (as if the room were a perfect rectangle), without regard for any cutouts. Accordingly, the area of the actual room will typically be smaller than the product obtained by multiplying the stated length times width. All dimensions are approximate and may vary with actual construction, and all floor plans and development plans are subject to change. 🏠

# UNIT WA3

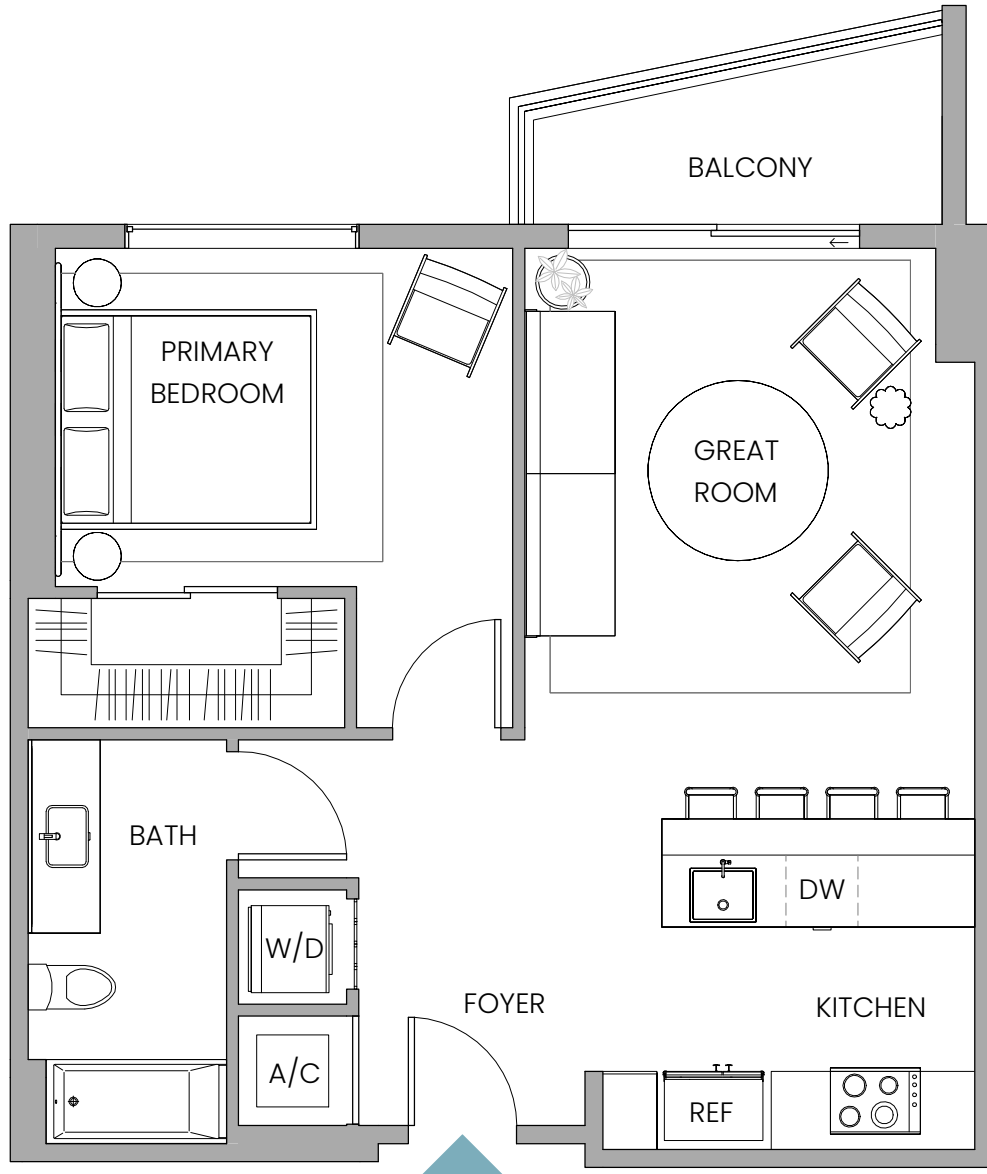
## Line 03

1 Bedroom | 1 Bathroom

INTERIOR 686 SQ FT / 64 SQ M

EXTERIOR 59 SQ FT / 5 SQ M

TOTAL 745 SQ FT / 69 SQ M



FLOORS 11-15

FLOORS 16-41



Stated dimensions are measured to the exterior boundaries of the exterior walls and the centerline of interior demising walls and in fact vary from the dimensions that would be determined by using the description and definition of the "Unit" set forth in the Declaration (which generally only includes the interior airspace between the perimeter walls and includes interior structural components). For your reference, the area of the Unit, determined in accordance with those defined unit boundaries, is 686 sq ft / 64 sq m. Note that measurements of rooms set forth on this floor plan are generally taken at the greatest points of each given room (as if the room were a perfect rectangle), without regard for any cutouts. Accordingly, the area of the actual room will typically be smaller than the product obtained by multiplying the stated length times width. All dimensions are approximate and may vary with actual construction, and all floor plans and development plans are subject to change. 🏠

# UNIT WA6

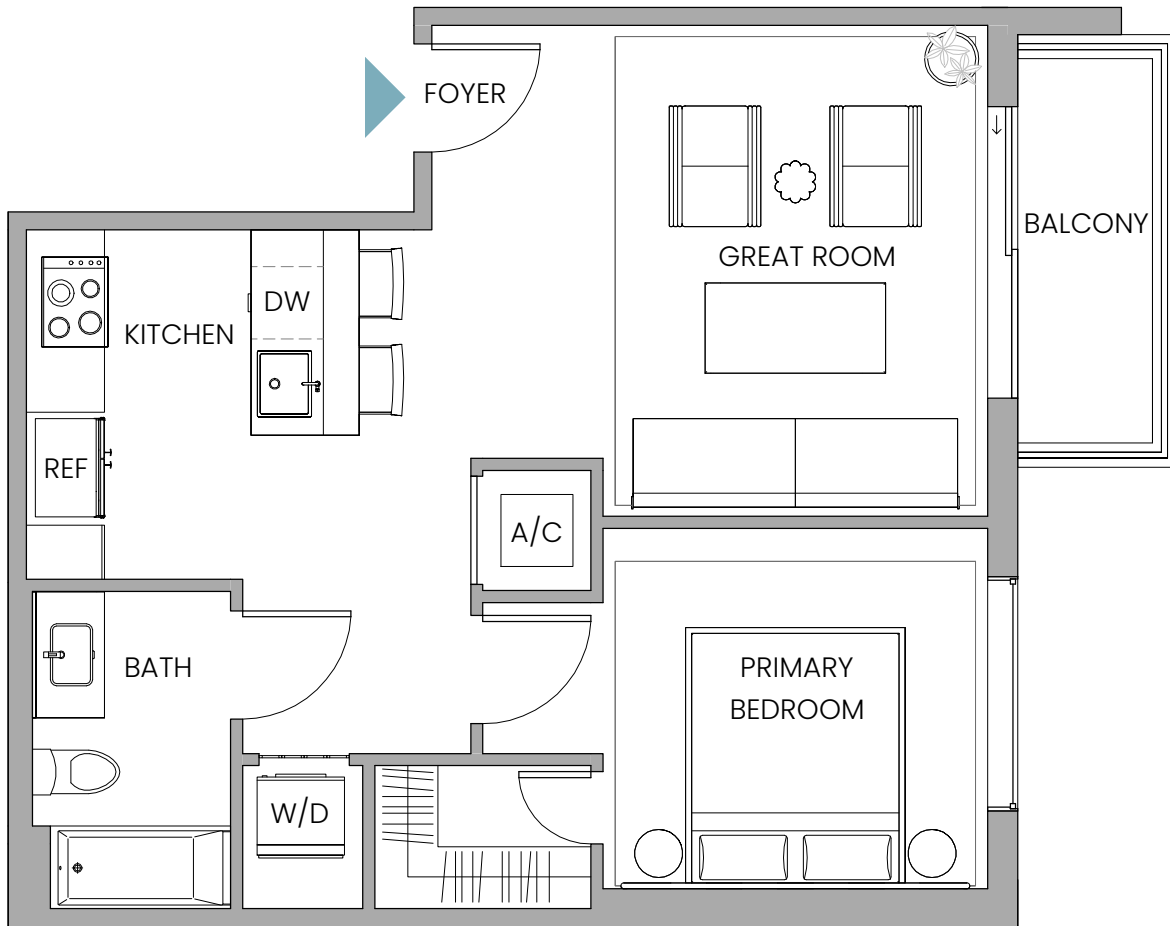
## Line 01

1 Bedroom | 1 Bathroom

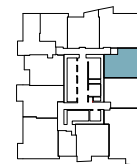
INTERIOR 641 SQ FT / 60 SQ M

EXTERIOR 53 SQ FT / 5 SQ M

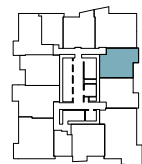
TOTAL 694 SQ FT / 65 SQ M



FLOORS 11-15



FLOORS 16-41



Stated dimensions are measured to the exterior boundaries of the exterior walls and the centerline of interior demising walls and in fact vary from the dimensions that would be determined by using the description and definition of the "Unit" set forth in the Declaration (which generally only includes the interior airspace between the perimeter walls and includes interior structural components). For your reference, the area of the Unit, determined in accordance with those defined unit boundaries, is 641 sq ft / 60 sq m. Note that measurements of rooms set forth on this floor plan are generally taken at the greatest points of each given room (as if the room were a perfect rectangle), without regard for any cutouts. Accordingly, the area of the actual room will typically be smaller than the product obtained by multiplying the stated length times width. All dimensions are approximate and may vary with actual construction, and all floor plans and development plans are subject to change. 🏠

# UNIT WA7

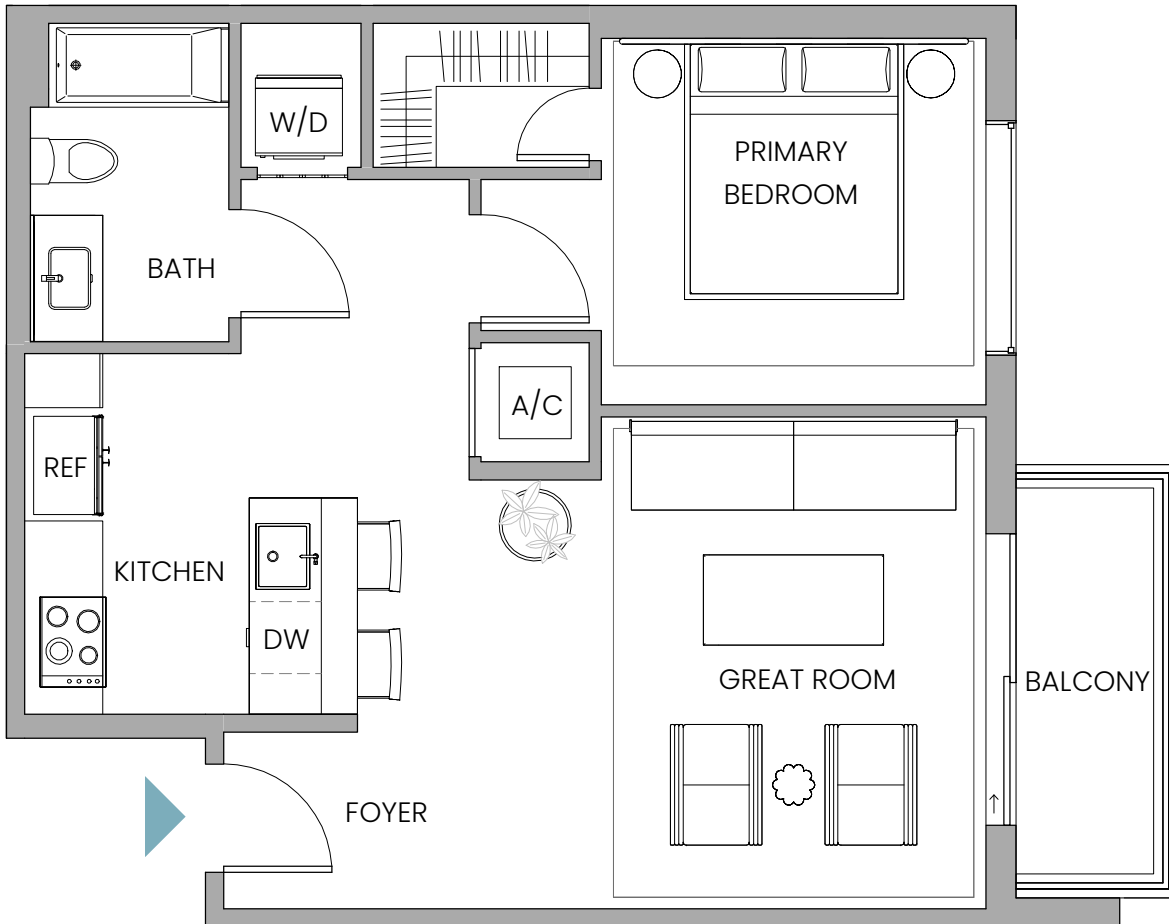
## Line 12

1 Bedroom | 1 Bathroom

INTERIOR 659 SQ FT / 61 SQ M

EXTERIOR 54 SQ FT / 5 SQ M

TOTAL 713 SQ FT / 66 SQ M



FLOORS 11-15

FLOORS 16-41

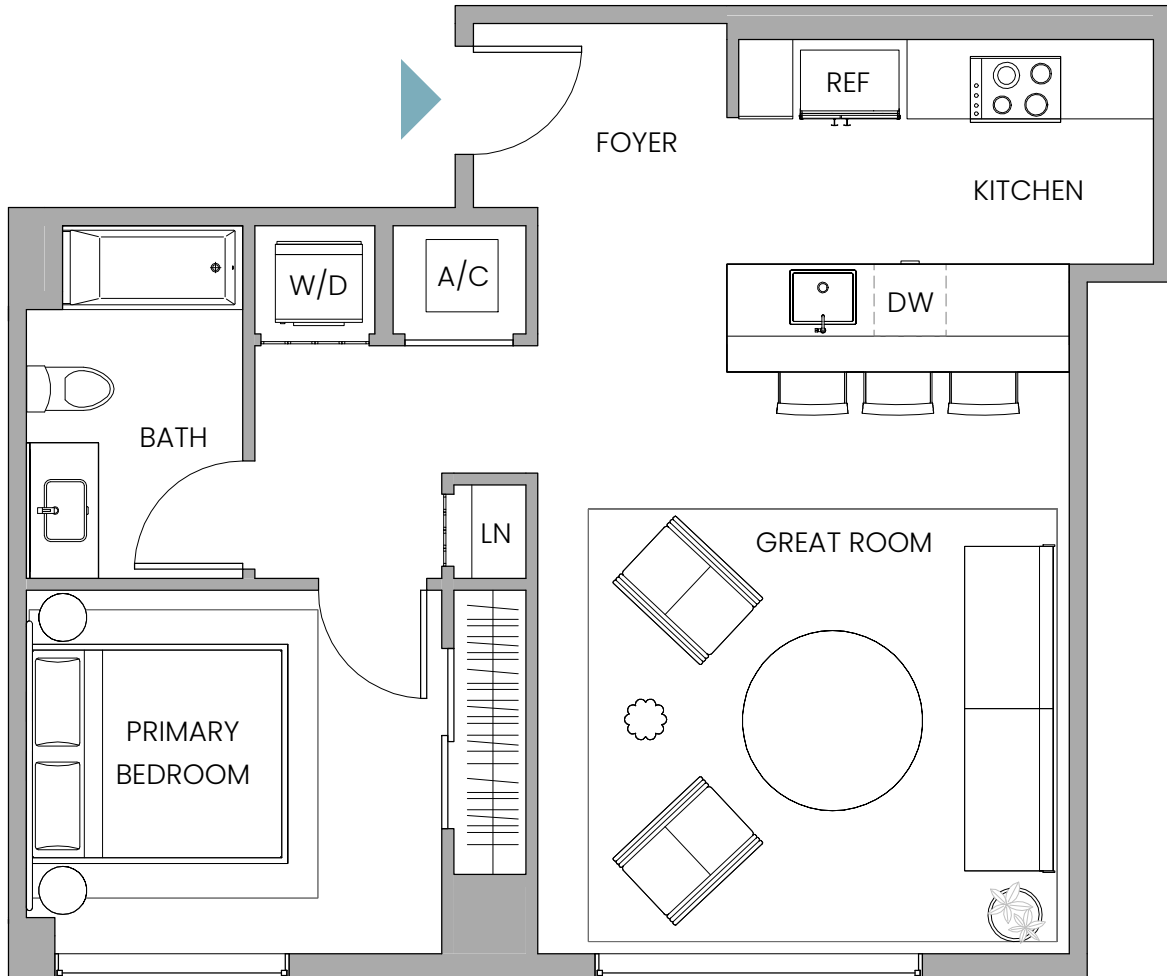


Stated dimensions are measured to the exterior boundaries of the exterior walls and the centerline of interior demising walls and in fact vary from the dimensions that would be determined by using the description and definition of the "Unit" set forth in the Declaration (which generally only includes the interior airspace between the perimeter walls and includes interior structural components). For your reference, the area of the Unit, determined in accordance with those defined unit boundaries, is 659 sq ft / 61 sq m. Note that measurements of rooms set forth on this floor plan are generally taken at the greatest points of each given room (as if the room were a perfect rectangle), without regard for any cutouts. Accordingly, the area of the actual room will typically be smaller than the product obtained by multiplying the stated length times width. All dimensions are approximate and may vary with actual construction, and all floor plans and development plans are subject to change. 🏠

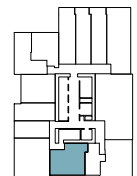
# UNIT WA8

## Line 11

1 Bedroom | 1 Bathroom  
INTERIOR 740 SQ FT / 69 SQ FT



FLOORS 03-05



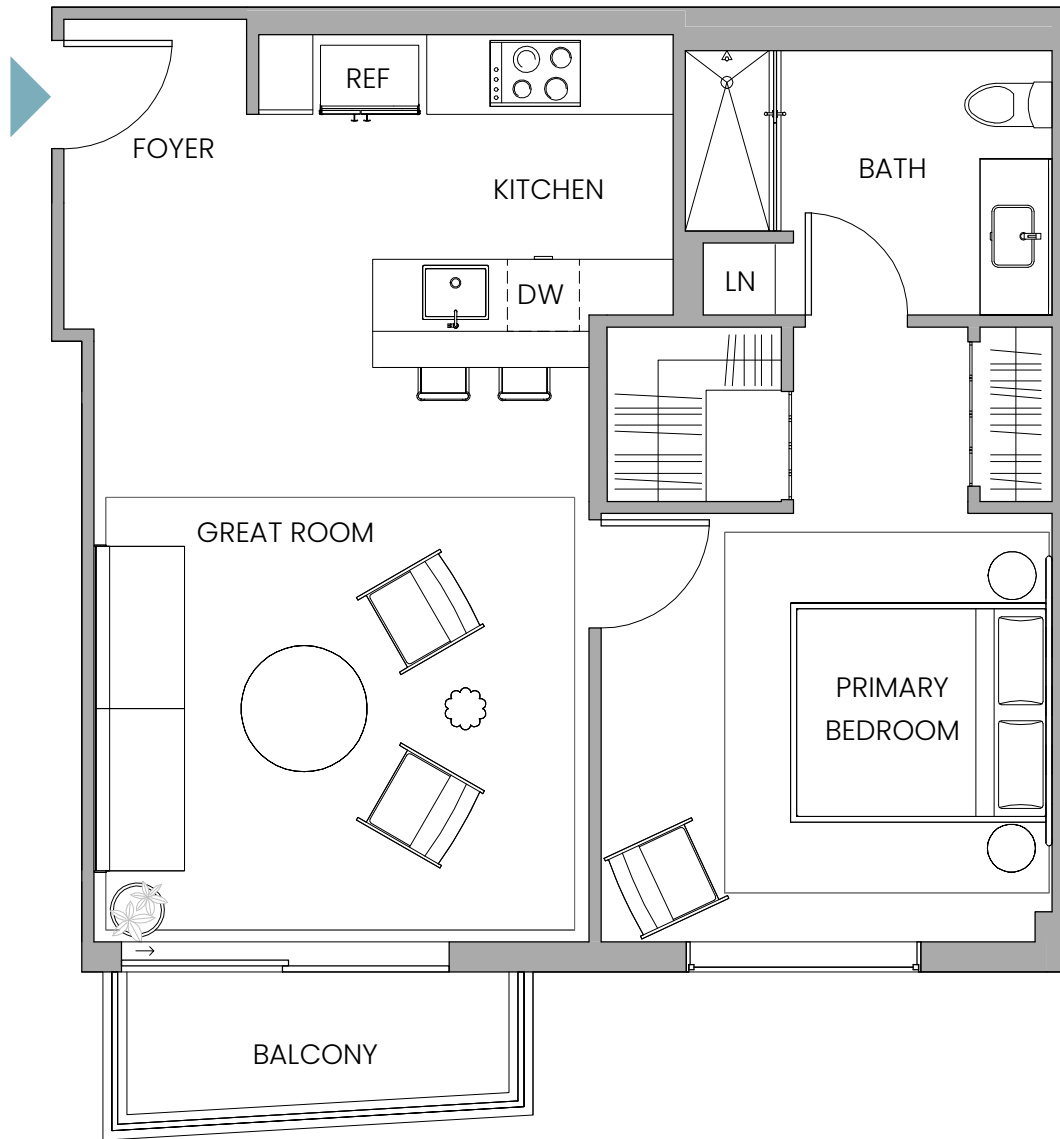
Stated dimensions are measured to the exterior boundaries of the exterior walls and the centerline of interior demising walls and in fact vary from the dimensions that would be determined by using the description and definition of the "Unit" set forth in the Declaration (which generally only includes the interior airspace between the perimeter walls and includes interior structural components). For your reference, the area of the Unit, determined in accordance with those defined unit boundaries, is 740 sq ft / 69 sq m. Note that measurements of rooms set forth on this floor plan are generally taken at the greatest points of each given room (as if the room were a perfect rectangle), without regard for any cutouts. Accordingly, the area of the actual room will typically be smaller than the product obtained by multiplying the stated length times width. All dimensions are approximate and may vary with actual construction, and all floor plans and development plans are subject to change. 🏠



# UNIT WA9

## Line 10

1 Bedroom | 1 Bathroom  
INTERIOR 716 SQ FT / 67 SQ M  
EXTERIOR 52 SQ FT / 5 SQ M  
TOTAL 800 SQ FT / 75 SQ M



FLOORS 11-15

FLOORS 16-41

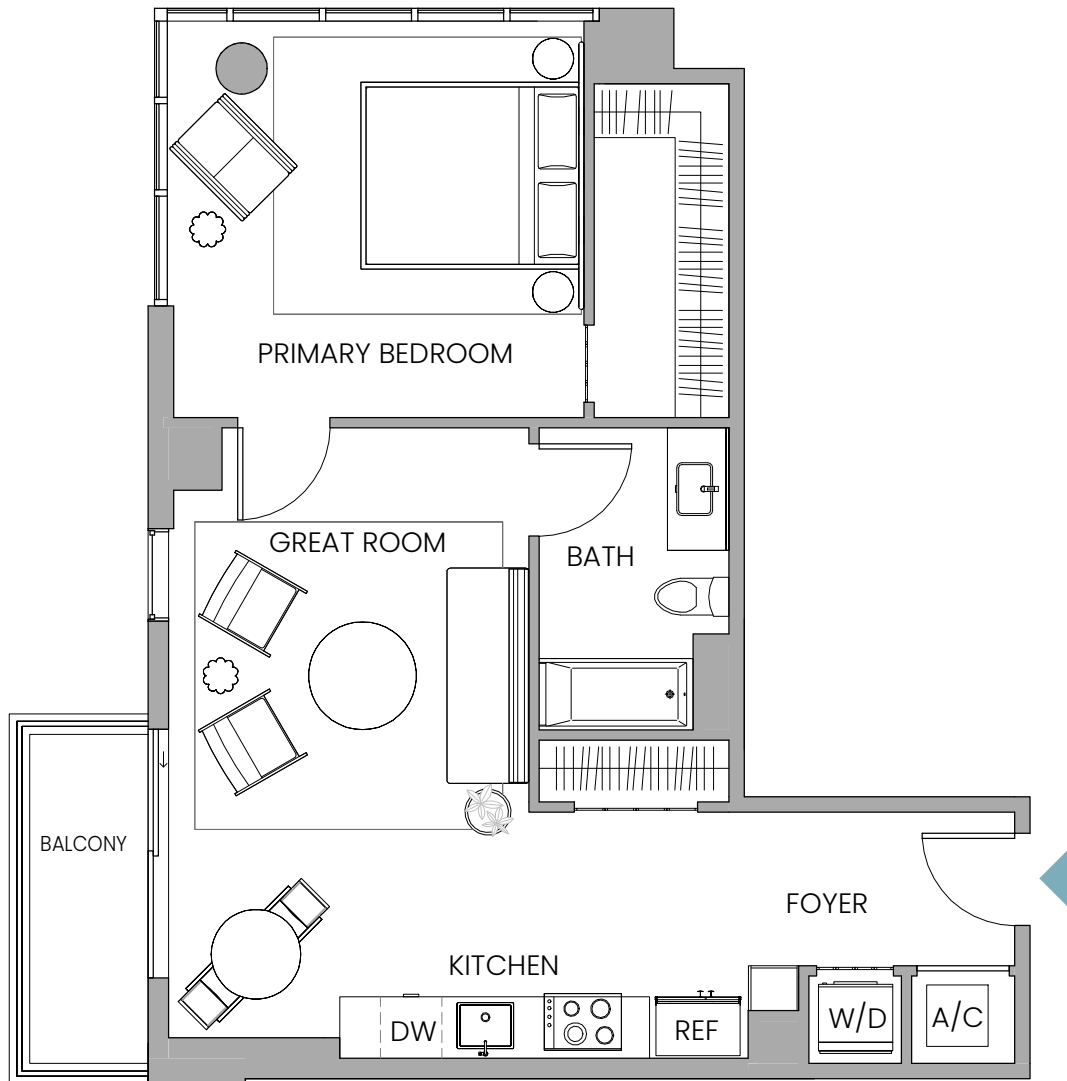


Stated dimensions are measured to the exterior boundaries of the exterior walls and the centerline of interior demising walls and in fact vary from the dimensions that would be determined by using the description and definition of the "Unit" set forth in the Declaration (which generally only includes the interior airspace between the perimeter walls and includes interior structural components). For your reference, the area of the Unit, determined in accordance with those defined unit boundaries, is 749 sq ft / 70 sq m. Note that measurements of rooms set forth on this floor plan are generally taken at the greatest points of each given room (as if the room were a perfect rectangle), without regard for any cutouts. Accordingly, the area of the actual room will typically be smaller than the product obtained by multiplying the stated length times width. All dimensions are approximate and may vary with actual construction, and all floor plans and development plans are subject to change. 🏠

# UNIT WA10

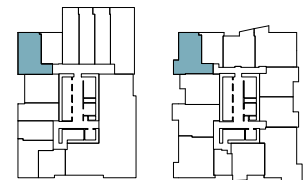
Line 06, Floors 02  
Line 05, Floors 16-41

1 Bedroom | 1 Bathroom  
INTERIOR 722 SQ FT / 67 SQ M  
EXTERIOR 54 SQ FT / 5 SQ M  
TOTAL 776 SQ FT / 72 SQ M



FLOORS 02

FLOORS 16-41



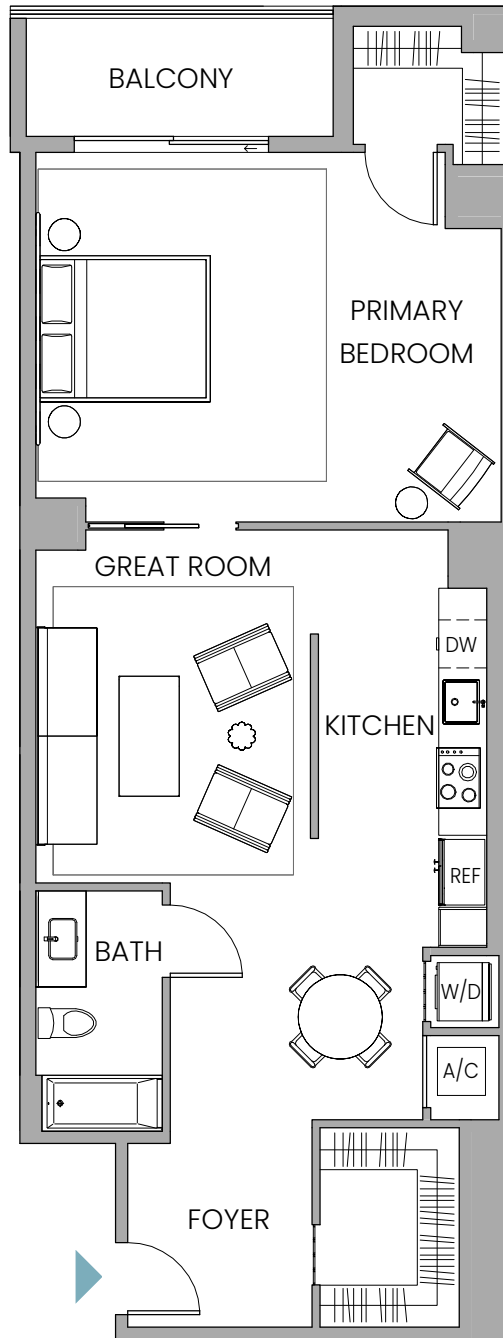
**Note**  
No Balcony on Floor 02

Stated dimensions are measured to the exterior boundaries of the exterior walls and the centerline of interior demising walls and in fact vary from the dimensions that would be determined by using the description and definition of the "Unit" set forth in the Declaration (which generally only includes the interior airspace between the perimeter walls and includes interior structural components). For your reference, the area of the Unit, determined in accordance with those defined unit boundaries, is 722 sq ft / 67 sq m. Note that measurements of rooms set forth on this floor plan are generally taken at the greatest points of each given room (as if the room were a perfect rectangle), without regard for any cutouts. Accordingly, the area of the actual room will typically be smaller than the product obtained by multiplying the stated length times width. All dimensions are approximate and may vary with actual construction, and all floor plans and development plans are subject to change. 🏠

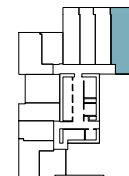
# UNIT WA14

## Line 01

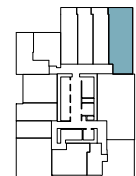
1 Bedroom | 1 Bathroom  
INTERIOR 1005 SQ FT / 93 SQ M  
EXTERIOR 71 SQ FT / 7 SQ M  
TOTAL 1076 SQ FT / 100 SQ M



FLOORS 02



FLOORS 03-05

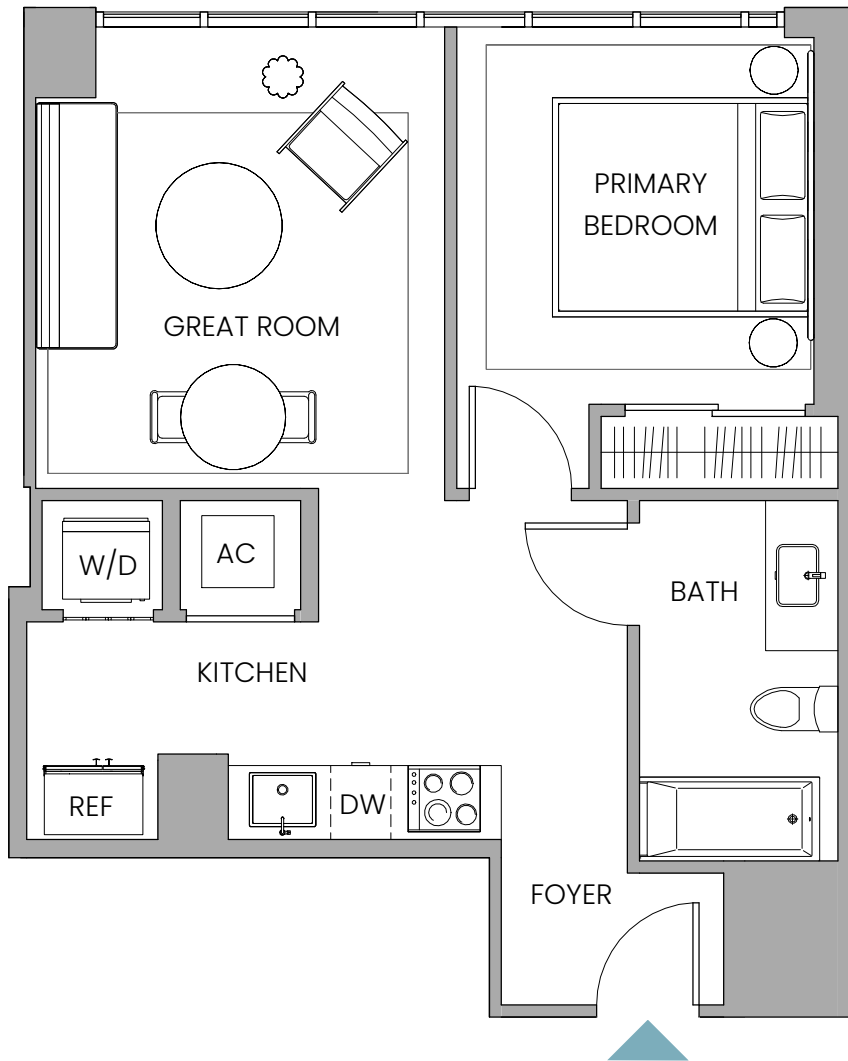


Stated dimensions are measured to the exterior boundaries of the exterior walls and the centerline of interior demising walls and in fact vary from the dimensions that would be determined by using the description and definition of the "Unit" set forth in the Declaration (which generally only includes the interior airspace between the perimeter walls and includes interior structural components). For your reference, the area of the Unit, determined in accordance with those defined unit boundaries, is 1005 sq ft / 93 sq m. Note that measurements of rooms set forth on this floor plan are generally taken at the greatest points of each given room (as if the room were a perfect rectangle), without regard for any cutouts. Accordingly, the area of the actual room will typically be smaller than the product obtained by multiplying the stated length times width. All dimensions are approximate and may vary with actual construction, and all floor plans and development plans are subject to change. 🏠

# UNIT WA22

Line 05, Floors 03-05 and 06-09  
Line 04, Floors 11-15

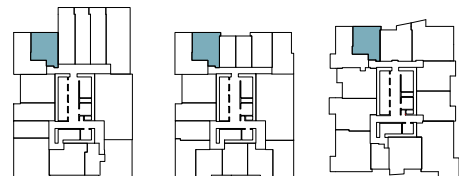
1 Bedroom | 1 Bathroom  
INTERIOR 567 SF / 53 SM



FLOORS 03-05

FLOORS 06-09

FLOORS 11-15



Stated dimensions are measured to the exterior boundaries of the exterior walls and the centerline of interior demising walls and in fact vary from the dimensions that would be determined by using the description and definition of the "Unit" set forth in the Declaration (which generally only includes the interior airspace between the perimeter walls and includes interior structural components). For your reference, the area of the Unit, determined in accordance with those defined unit boundaries, is 567 sq ft / 53 sq m. Note that measurements of rooms set forth on this floor plan are generally taken at the greatest points of each given room (as if the room were a perfect rectangle), without regard for any cutouts. Accordingly, the area of the actual room will typically be smaller than the product obtained by multiplying the stated length times width. All dimensions are approximate and may vary with actual construction, and all floor plans and development plans are subject to change. 🏠

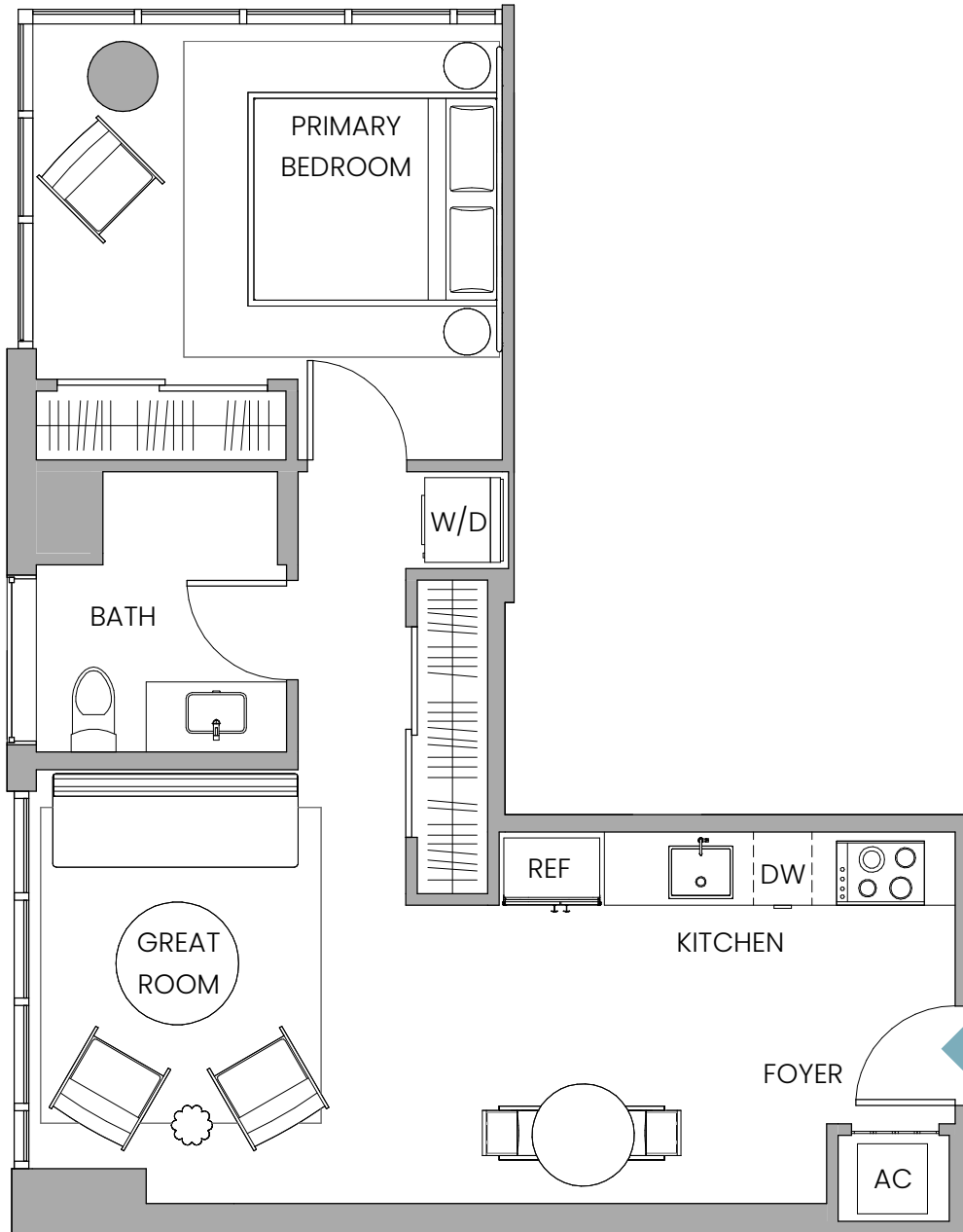
# UNIT WA23

Line 06, Floors 03-05 and 06-09

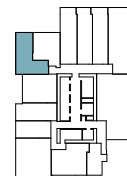
Line 05, Floors 11-15

1 Bedroom | 1 Bathroom

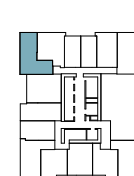
INTERIOR 647 SF / 60 SM



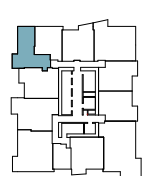
FLOORS 03-05



FLOORS 06-09



FLOORS 11-15



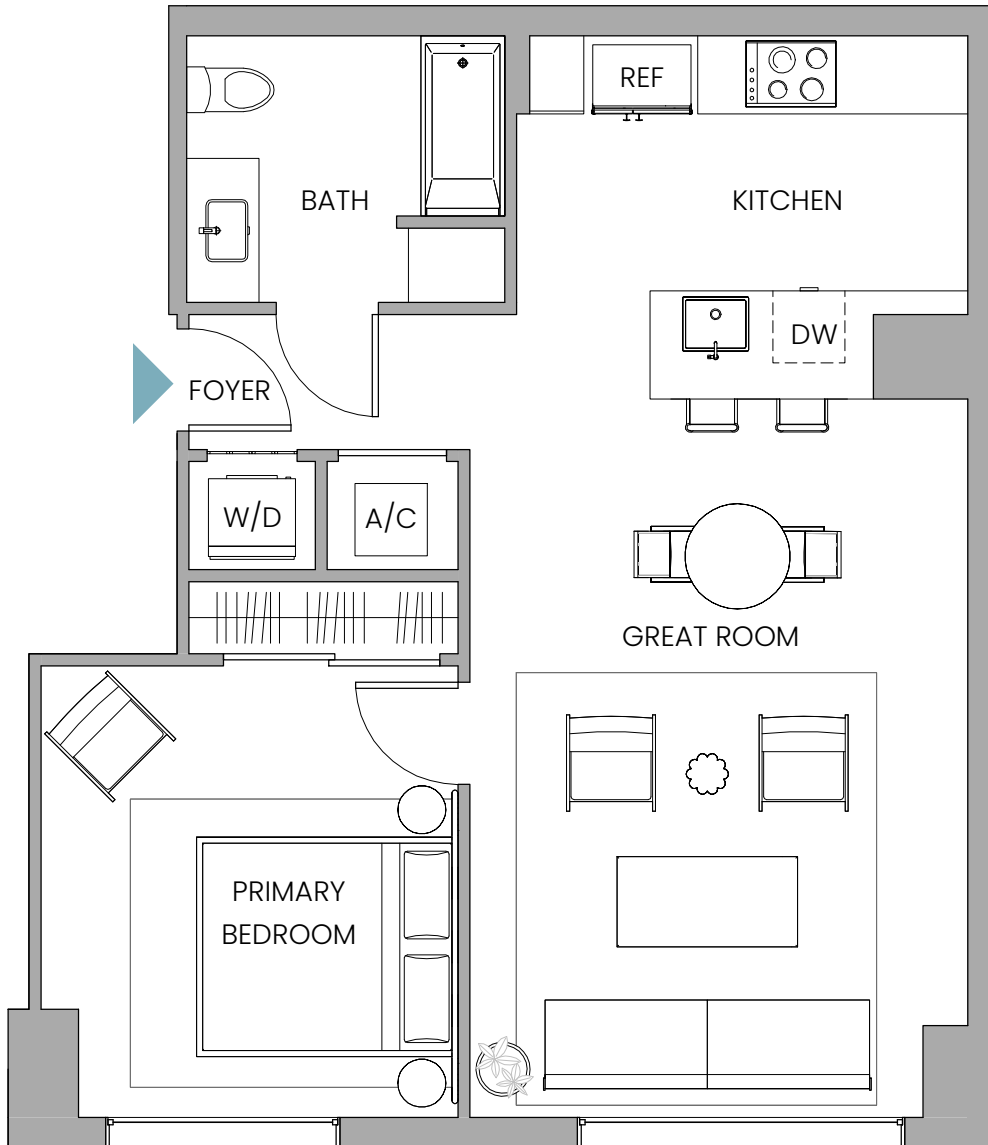
**Note**  
No Balcony on Floor 03-09

Stated dimensions are measured to the exterior boundaries of the exterior walls and the centerline of interior demising walls and in fact vary from the dimensions that would be determined by using the description and definition of the "Unit" set forth in the Declaration (which generally only includes the interior airspace between the perimeter walls and includes interior structural components). For your reference, the area of the Unit, determined in accordance with those defined unit boundaries, is 647 sq ft / 60 sq m. Note that measurements of rooms set forth on this floor plan are generally taken at the greatest points of each given room (as if the room were a perfect rectangle), without regard for any cutouts. Accordingly, the area of the actual room will typically be smaller than the product obtained by multiplying the stated length times width. All dimensions are approximate and may vary with actual construction, and all floor plans and development plans are subject to change.

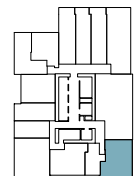
# UNIT WA24

## Line 13

1 Bedroom | 1 Bathroom  
INTERIOR 773 SQ FT / 72 SQ M



FLOORS 03-05



Stated dimensions are measured to the exterior boundaries of the exterior walls and the centerline of interior demising walls and in fact vary from the dimensions that would be determined by using the description and definition of the "Unit" set forth in the Declaration (which generally only includes the interior airspace between the perimeter walls and includes interior structural components). For your reference, the area of the Unit, determined in accordance with those defined unit boundaries, is 773 sq ft / 72 sq m. Note that measurements of rooms set forth on this floor plan are generally taken at the greatest points of each given room (as if the room were a perfect rectangle), without regard for any cutouts. Accordingly, the area of the actual room will typically be smaller than the product obtained by multiplying the stated length times width. All dimensions are approximate and may vary with actual construction, and all floor plans and development plans are subject to change. 🏠

# UNIT WB1

Line 10, Floors 03-05

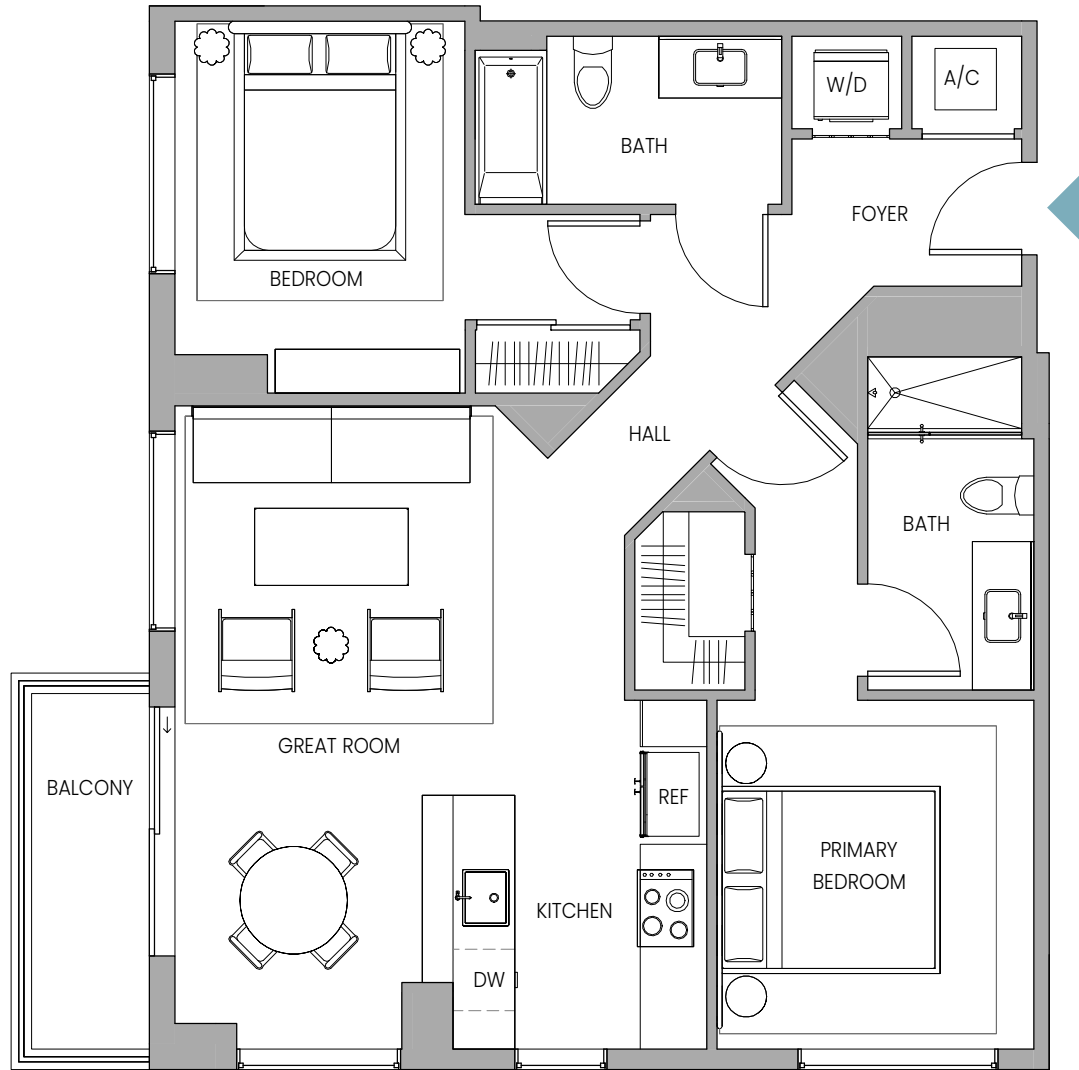
Line 08, Floors 11-15 and 16-41

2 Bedrooms | 2 Bathrooms

INTERIOR 970 SQ FT / 90 SQ M

EXTERIOR 58 SQ FT / 5 SQ M

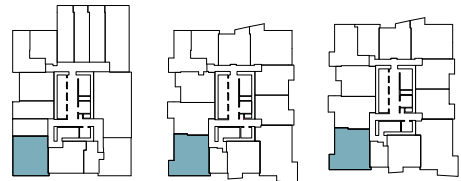
TOTAL 1028 SQ FT / 95 SQ M



FLOORS 03-05

FLOORS 11-15

FLOORS 16-41



**Note**

No Balcony on Floor 03-05

Stated dimensions are measured to the exterior boundaries of the exterior walls and the centerline of interior demising walls and in fact vary from the dimensions that would be determined by using the description and definition of the "Unit" set forth in the Declaration (which generally only includes the interior airspace between the perimeter walls and includes interior structural components). For your reference, the area of the Unit, determined in accordance with those defined unit boundaries, is 970 sq ft / 90 sq m. Note that measurements of rooms set forth on this floor plan are generally taken at the greatest points of each given room (as if the room were a perfect rectangle), without regard for any cutouts. Accordingly, the area of the actual room will typically be smaller than the product obtained by multiplying the stated length times width. All dimensions are approximate and may vary with actual construction, and all floor plans and development plans are subject to change. 🏠

# UNIT WB3

## Line 02

2 Bedroom | 2 Bathroom

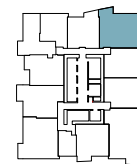
INTERIOR 994 SQ FT / 92 SQ M

EXTERIOR 52 SQ FT / 5 SQ M

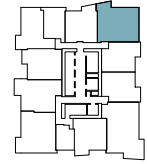
TOTAL 1046 SQ FT / 97 SQ M



FLOORS 11-15



FLOORS 16-41



Stated dimensions are measured to the exterior boundaries of the exterior walls and the centerline of interior demising walls and in fact vary from the dimensions that would be determined by using the description and definition of the "Unit" set forth in the Declaration (which generally only includes the interior airspace between the perimeter walls and includes interior structural components). For your reference, the area of the Unit, determined in accordance with those defined unit boundaries, is 994 sq ft / 92 sq m. Note that measurements of rooms set forth on this floor plan are generally taken at the greatest points of each given room (as if the room were a perfect rectangle), without regard for any cutouts. Accordingly, the area of the actual room will typically be smaller than the product obtained by multiplying the stated length times width. All dimensions are approximate and may vary with actual construction, and all floor plans and development plans are subject to change. 🏠



# UNIT WB3 OPTIONAL SPLIT



## Line 02

Studio | 1 Bathroom

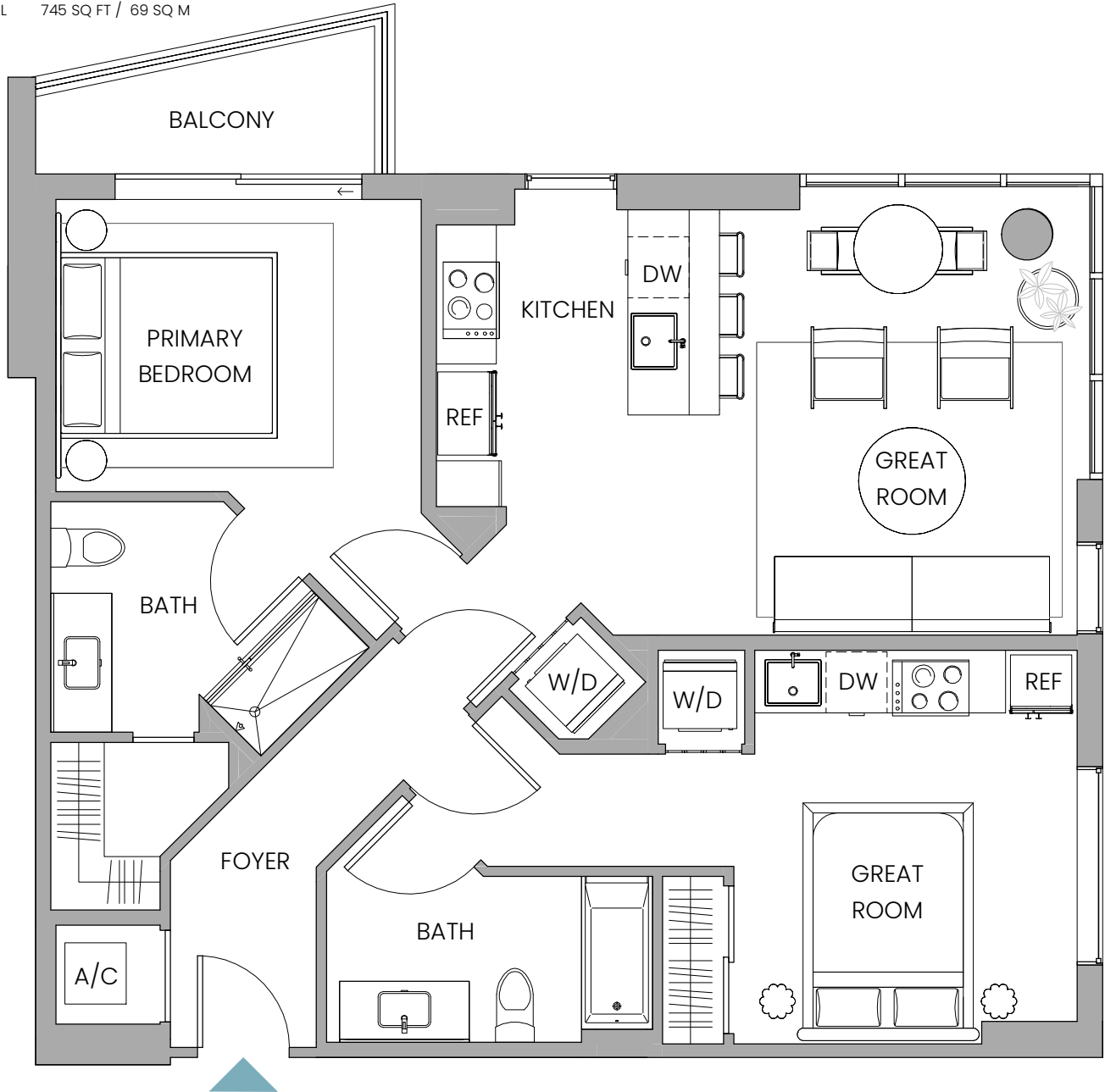
INTERIOR 301 SQ FT / 28 SQ M

1 Bedroom | 1 Bathroom

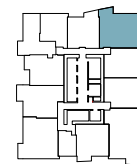
INTERIOR 693 SQ FT / 64 SQ M

EXTERIOR 52 SQ FT / 5 SQ M

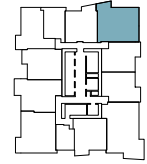
TOTAL 745 SQ FT / 69 SQ M



FLOORS 11-15



FLOORS 16-41



Stated dimensions are measured to the exterior boundaries of the exterior walls and the centerline of interior demising walls and in fact vary from the dimensions that would be determined by using the description and definition of the "Unit" set forth in the Declaration (which generally only includes the interior airspace between the perimeter walls and includes interior structural components). For your reference, the area of the Unit, determined in accordance with those defined unit boundaries, is 994 sq ft / 92 sq m. Note that measurements of rooms set forth on this floor plan are generally taken at the greatest points of each given room (as if the room were a perfect rectangle), without regard for any cutouts. Accordingly, the area of the actual room will typically be smaller than the product obtained by multiplying the stated length times width. All dimensions are approximate and may vary with actual construction, and all floor plans and development plans are subject to change. 🏠

# UNIT WB4



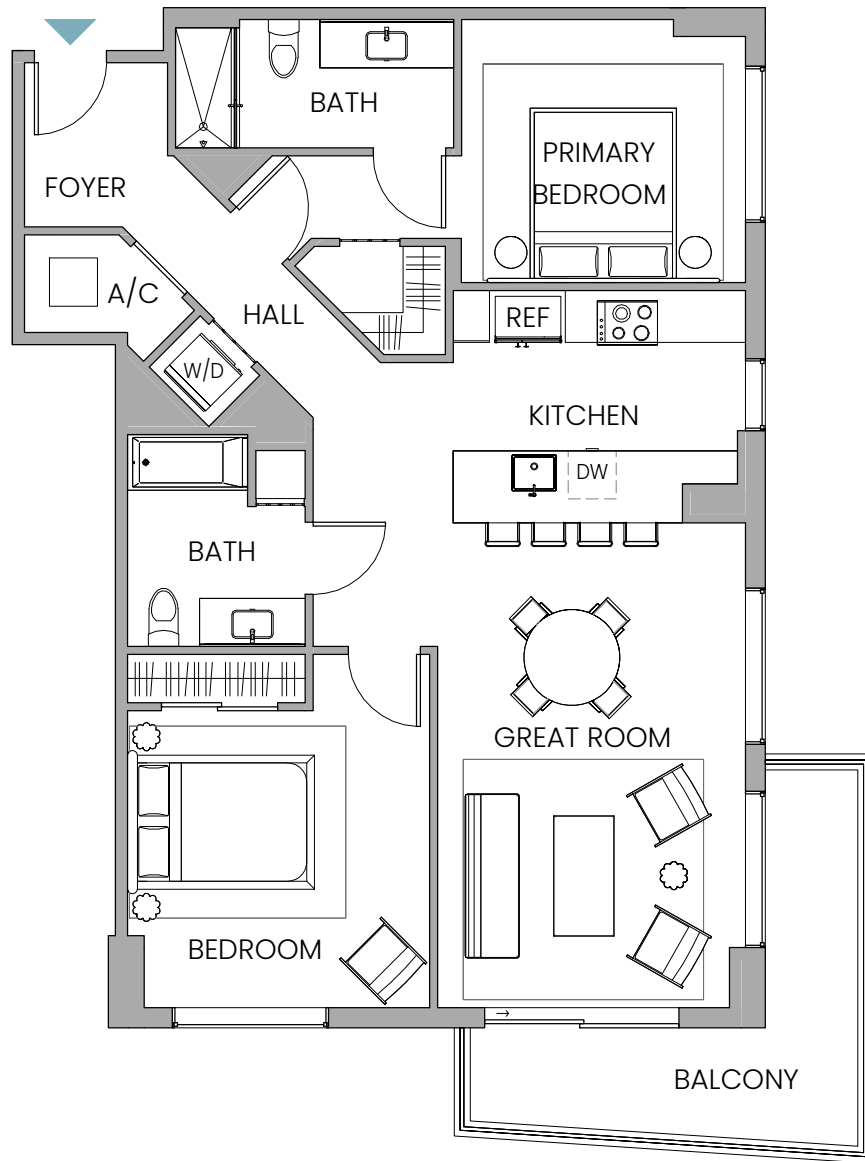
## Line 11

2 Bedrooms | 2 Bathrooms

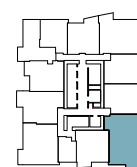
INTERIOR 1165 SQ FT / 108 SQ M

EXTERIOR 140 SQ FT / 13 SQ M

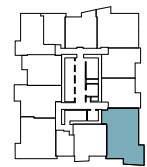
TOTAL 1305 SQ FT / 121 SQ M



FLOORS 11-15



FLOORS 16-41



Stated dimensions are measured to the exterior boundaries of the exterior walls and the centerline of interior demising walls and in fact vary from the dimensions that would be determined by using the description and definition of the "Unit" set forth in the Declaration (which generally only includes the interior airspace between the perimeter walls and includes interior structural components). For your reference, the area of the Unit, determined in accordance with those defined unit boundaries, is 1165 sq ft / 108 sq m. Note that measurements of rooms set forth on this floor plan are generally taken at the greatest points of each given room (as if the room were a perfect rectangle), without regard for any cutouts. Accordingly, the area of the actual room will typically be smaller than the product obtained by multiplying the stated length times width. All dimensions are approximate and may vary with actual construction, and all floor plans and development plans are subject to change. 🏠

# UNIT WB4 OPTIONAL SPLIT



## Line 11

Studio | 1 Bathroom

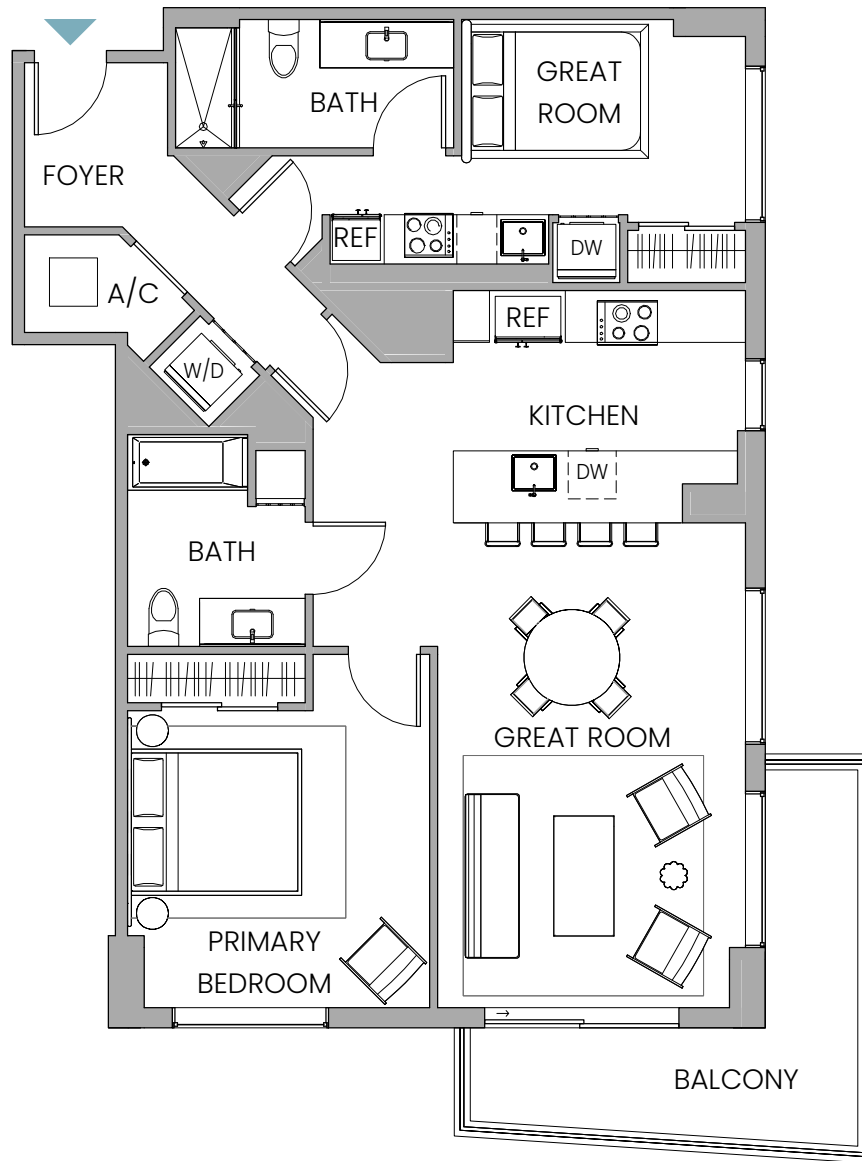
INTERIOR 264 SQ FT / 24 SQ M

1 Bedroom | 1 Bathroom

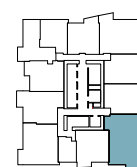
INTERIOR 901 SQ FT / 84 SQ M

EXTERIOR 140 SQ FT / 13 SQ M

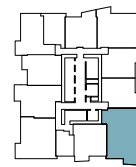
TOTAL 1041 SQ FT / 97 SQ M



FLOORS 11-15



FLOORS 16-41



Stated dimensions are measured to the exterior boundaries of the exterior walls and the centerline of interior demising walls and in fact vary from the dimensions that would be determined by using the description and definition of the "Unit" set forth in the Declaration (which generally only includes the interior airspace between the perimeter walls and includes interior structural components). For your reference, the area of the Unit, determined in accordance with those defined unit boundaries, is 1165 sq ft / 108 sq m. Note that measurements of rooms set forth on this floor plan are generally taken at the greatest points of each given room (as if the room were a perfect rectangle), without regard for any cutouts. Accordingly, the area of the actual room will typically be smaller than the product obtained by multiplying the stated length times width. All dimensions are approximate and may vary with actual construction, and all floor plans and development plans are subject to change. 🏠