



AN ASHLEY
NORTON

EDITION 26

*Timeless pieces for the most
discerning of spaces.*

Established in 1987, Ashley Norton has grown to become one of the leading designers and manufacturers of architectural hardware.

The Ashley Norton cabinet hardware collection features a wide choice of designs and finishes, cast in Solid Bronze or forged in Solid Brass. Our Solid Bronze products are sand cast from art grade bronze, and feature distressed patinas. Our Solid Brass products are hot forged, allowing for crisp, sharp lines with exceptional finish quality.

Our Manzoni range has been created with elegance and refinement, to make a distinctive statement. Starting from the aesthetics of the design, to the quality of the finishing and even the ergonomics of the operation, our designers have taken care with every detail. And of course, our renowned manufacturing expertise allows us to create a product which is both pleasing to the eye as well as comfortable to touch.

Choose from the most unique collection of designer-inspired cabinet hardware. Whether the style of your space is modern, transitional or traditional — our vast collection brings you a diverse selection of offerings to suit the architectural features of your space.

ASHLEY NORTON

TABLE OF CONTENTS

ASHLEY NORTON

SOLID BRONZE	4
SOLID BRASS	66

MANZONI

URBAN	118
STAINLESS STEEL	123
NORDIC COLLECTION	126
CLASSICAL	132
MYSTIC	140
DESIGNER WOOD	144

SOLID BRONZE

The Art of Bronze

At Ashley Norton, only the finest art-grade bronze alloys are chosen for our hardware—ensuring lasting beauty, rich character, and a true sense of luxury. **Dark Bronze (BZ)**, **Natural Bronze (NB)** and **Matte Black (TC)** products are produced from silicon bronze, a coppery-gold colored alloy of copper, silicon and zinc.

Our **Dark Bronze (BZ)** finish remains a designer favorite, admired for its depth, warmth, and consistency. **Matte Black (TC)** is achieved through a precision-applied powder coat, offering a sleek and modern interpretation of bronze. **Natural Bronze (NB)**, evokes the quiet sophistication of lightly aged brass, pairing a contemporary tone with the organic texture inherent in sand-cast bronze. **White Bronze (WL)** features a sophisticated silver hue with warm undertones creating a calming atmosphere. **White Medium (WM)** has a purposeful distressing that offers an authentic aged appearance. Its hand-applied dark patina creates a warm, pewter-like appearance.

Every piece receives a light protective wax coating, allowing the patina to evolve gracefully over time. As it responds to touch, climate, and environment, the surface develops a living finish—revealing highlights where frequently handled and deepening in untouched areas. The result is hardware that tells a story: one of authenticity, transformation, and timeless elegance.



Dark Bronze (BZ)



Matte Black (TC)



Natural Bronze (NB)



White Bronze (WL)



White Medium (WM)



SOLID BRONZE KNOBS



Helios Knob

ITEM	DIA.	PROJ.	PRICE
3880 1 ¼	1 ¼"	1"	\$38.00
3880 1 ½	1 ½"	1"	\$41.90



Round Cone Knob

ITEM	DIA.	PROJ.	PRICE
3189 1 ¼	1 ¼"	1 ⅞"	\$46.60
3189 1 ½	1 ⅜"	1 ⅞"	\$51.80



T-Knob

ITEM	SIZE	PROJ.	PRICE
3895 1 ¼	1 ¼" x 7/8"	1"	\$41.90

Cannot be used with backplates



Cube Cup Knob

ITEM	SIZE	PROJ.	PRICE
3892 1 ½	1 ½" x 7/8"	7/8"	\$57.30

Cannot be used with backplates

Square Knob

ITEM	SIZE	PROJ.	PRICE
3674 1 ¼	1 ¼" x 1 ¼"	1"	\$41.90
3674 1 ½	1 ½" x 1 ½"	1"	\$45.60

Cannot be used with backplates



Square Cone Knob

ITEM	SIZE	PROJ.	PRICE
3191 1 ¼	1 ¼" x 1 ¼"	1 ⅞"	\$56.60
3191 1 ½	1 ½" x 1 ½"	1"	\$63.40

Cannot be used with backplates



Round Step Knob

ITEM	DIA.	PROJ.	PRICE
3624 1 ¼	1 ¼"	1 ⅞"	\$45.60
3624 1 ½	1 ½"	1"	\$49.60



Square Step Knob

ITEM	SIZE	PROJ.	PRICE
3672 1 ¼	1 ¼" x 1 ¼"	⅞"	\$49.60
3672 1 ½	1 ½" x 1 ½"	⅞"	\$55.10

Cannot be used with backplates





Cleat Knob

ITEM	SIZE	PROJ.	PRICE
112 2	2" x ¾"	1 ⅝"	\$50.10
112 3	3" x ⅞"	1 ⅝"	\$55.40



Octave Knob

ITEM	SIZE	PROJ.	PRICE
3775 1 ¼	1 ¼" x 1 ¼"	1 ⅛"	\$45.30
3775 1 ½	1 ½" x 1 ½"	1 ⅛"	\$50.80



Adria Knob

ITEM	DIA.	PROJ.	PRICE
3950 1 ¼	1 ¼"	1 ⅜"	\$43.00
3950 1 ½	1 ½"	1 ⅜"	\$48.20



Globe Knob

ITEM	DIA.	PROJ.	PRICE
3762 1	1 "	1 ⅛"	\$32.20
3762 1 ¼	1 ¼"	1 ½"	\$35.80

Tayo Knob

ITEM	DIA.	PROJ.	PRICE
3875 1 ¼	1 ¼"	1 ¼"	\$37.60
3875 1 ½	1 ½"	1 ¼"	\$41.30



Round Disc Knob

ITEM	DIA.	PROJ.	PRICE
3884 1 ¼	1 ¼"	1 ⅛"	\$37.60
3884 1 ½	1 ½"	1 ⅛"	\$41.30



Mila Knob

ITEM	SIZE	PROJ.	PRICE
3112 1 ¼	1 ¼" x ⅝"	1 ¼"	\$32.10
3112 1 ½	1 ½" x 7⁄8"	1 ⅜"	\$35.70



Mushroom Knob

ITEM	DIA.	PROJ.	PRICE
378 1 ¼	1 ¼"	1"	\$42.30
378 1 ½	1 ½"	1"	\$47.80





Bar Knob Pull

ITEM	LENGTH	PROJ.	PRICE
3431	2" x 5/8"	1 3/8"	\$37.30



Potato Knob

ITEM	LENGTH	PROJ.	PRICE
3630	1 7/8" x 3/4"	1 1/2"	\$48.00



Twist Knob

ITEM	LENGTH	PROJ.	PRICE
399	1 5/8"	1 1/8"	\$41.90



Textured Knob

ITEM	LENGTH	PROJ.	PRICE
3896	1 1/2" x 3/4"	1"	\$44.80

Cannot be used with backplates





Faceted Knob

ITEM	SIZE	PROJ.	PRICE
3995 1 ¼	1 ¼" x 1 ¼"	1 ¼"	\$45.30
3995 1 ⅜	1 ⅜" x 1 ⅜"	1 ⅜"	\$50.80



Jewelled Knob

ITEM	SIZE	PROJ.	PRICE
3735 1 ¼	1 ¼" x 1 ¼"	1"	\$48.00
3735 1 ½	1 ½" x 1 ½"	1"	\$53.30



Square Knob

ITEM	SIZE	PROJ.	PRICE
3678 1 ¼	1 ¼" x 1 ¼"	1 ⅛"	\$41.30
3678 1 ½	1 ½" x 1 ½"	1 ⅛"	\$45.20



Opal Knob

ITEM	SIZE	PROJ.	PRICE
3621 1 ½	1 ½" x 7/8"	1 ¼"	\$45.60

Wheel Knob

ITEM	DIA.	PROJ.	PRICE
3891 1 ¼	1 ¼"	1 ⅝"	\$45.60
3891 1 ½	1 ½"	1 ¼"	\$51.30



Rose Knob

ITEM	DIA.	PROJ.	PRICE
391	1 ⅝"	1 ⅜"	\$50.10



Flower Knob

ITEM	DIA.	PROJ.	PRICE
394	1 ¼"	1 ¼"	\$42.80



Bead Knob

ITEM	DIA.	PROJ.	PRICE
3985 1 ¼	1 ¼"	1 ¼"	\$41.10
3985 1 ½	1 ½"	1 ⅜"	\$46.60





Round Knob/ Round Knob on Rose

ITEM	DIA.	PROJ.	PRICE
A	117 1/4	1 1/4" 1 1/8"	\$32.10
B	117 1/2	1 1/2" 1 1/4"	\$36.20
C	113 1/4	1 1/4" 1 3/8"	\$51.50
D	113 1/2	1 1/2" 1 1/2"	\$61.10



Egg Knob/ Egg Knob on Rose

ITEM	DIA.	PROJ.	PRICE
A	118 1/4	1 1/4" 1 1/8"	\$32.10
B	118 1/2	1 1/2" 1 1/4"	\$36.20
C	118 2	2" x 1 1/8" 1 1/4"	\$50.10
D	114 1/4	1 1/4" 1 1/4"	\$51.50
E	114 1/2	1 1/2" 1 3/8"	\$61.10



Oblong Stone Knob

ITEM	SIZE	PROJ.	PRICE
A	3920	2" x 1 1/8" 1 1/8"	\$46.60
B	3927	1 1/2" x 1 1/4" 1 1/8"	\$46.60





Newport Knob

ITEM	DIA.	PROJ.	PRICE
3990 1 ¼	1 ¼"	1 ⅞"	\$38.00
3990 1 ½	1 ½"	1 ¼"	\$44.40



Harrison Knob

ITEM	DIA.	PROJ.	PRICE
3127 1 ¼	1 ¼"	1 ⅜"	\$44.20
3127 1 ½	1 ½"	1 ½"	\$49.30



'L' Knob

ITEM	SIZE	PROJ.	PRICE
3894 1	1" x 1"	7/8"	\$41.90

Cannot be used with backplates



Stick Knob

ITEM	DIA.	PROJ.	PRICE
385	¾"	1 ⅞"	\$38.00

Deco Knob

ITEM	SIZE	PROJ.	PRICE
3980 1 ¼	1 ¼" x 1 ¼"	1 ⅛"	\$45.60
3980 1 ½	1 ½" x 1 ½"	1"	\$49.60

Cannot be used with backplates



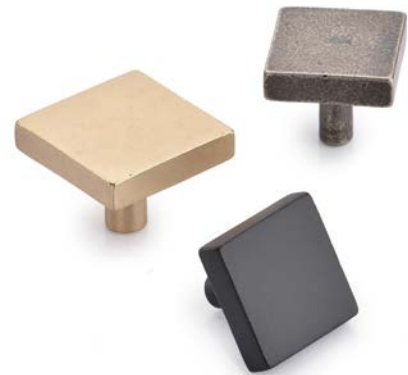
Aiden Knob

ITEM	DIA.	PROJ.	PRICE
3981 1 ¼	1 ¼"	1 ⅜"	\$45.30
3981 1 ½	1 ½"	1 ½"	\$50.80



Square Disc Knob

ITEM	SIZE	PROJ.	PRICE
3897 1 ¼	1 ¼" x 1 ¼"	1 ⅛"	\$41.30
3897 1 ½	1 ½" x 1 ½"	1 ⅛"	\$45.20



Mateo Knob

ITEM	DIA.	PROJ.	PRICE
3125 1 ¼	1 ¼"	1 ⅞"	\$45.30
3125 1 ½	1 ½"	1 ⅞"	\$49.30





Artisanal Knob

ITEM	SIZE	PROJ.	PRICE
119	3 1/8" x 7/8"	1 3/4"	\$67.70



Pyramid Knob

ITEM	SIZE	PROJ.	PRICE
390 1 1/4	1 1/4" x 1 1/4"	1 1/8"	\$39.90
390 1 1/2	1 1/2" x 1 1/2"	1 1/8"	\$44.40

Cannot be used with backplates



Tuscany Knob

ITEM	SIZE	PROJ.	PRICE
115	2 7/8" x 7/8"	1 5/8"	\$64.80



Trapezoidal Knob

ITEM*	SIZE	PROJ.	PRICE
3625 1 1/4	1 1/4" x 1 1/4"	1"	\$45.60

Cannot be used with backplates

Brylee Knob

ITEM	DIA.	PROJ.	PRICE
3858 1 ¼	1 ¼"	1 ¾"	\$49.60
3858 1 ½	1 ½"	1 ½"	\$54.70



Gallery Knob

ITEM	DIA.	LENGTH	PROJ.	PRICE
334	¾"	3 ½"	1 ¼"	\$54.70



Miles Knob

ITEM	SIZE	PROJ.	PRICE
3899 1 ¼	1 ¼" x 1 ¼"	1 ¼"	\$44.30
3899 1 ½	1 ½" x 1 ½"	1 ¼"	\$48.00

Cannot be used with backplates



Hudson Knob

ITEM	SIZE	PROJ.	PRICE
4382 1 ⅜	1 ⅜" x 1 ⅜"	1"	\$44.00

Cannot be used with backplates





Hammered Egg Knob

ITEM	DIA.	PROJ.	PRICE
H118 1 ¼	1 ¼"	1 ⅞"	\$38.00
H118 1 ½	1 ½"	1 ¼"	\$42.00



Hammered Round Knob

ITEM	DIA.	PROJ.	PRICE
H117 1 ¼	1 ¼"	1 ⅞"	\$38.00
H117 1 ½	1 ½"	1 ¼"	\$42.00



Hammered Square Knob

ITEM	SIZE	PROJ.	PRICE
H3897 1 ¼	1 ¼" x 1 ¼"	1 ⅞"	\$48.00
H3897 1 ½	1 ½" x 1 ½"	1 ⅞"	\$52.00



CKB.SQ

SIZE	PRICE
2 1/2" x 1 1/2"	\$39.90



CKB.SR

SIZE	PRICE
2 1/2" x 1 1/2"	\$39.90



CKB.CV

SIZE	PRICE
2 1/2" x 1 1/2"	\$39.90



CKB.OV

SIZE	PRICE
2 1/2" x 1 3/8"	\$34.70



CKB.MS 1 1/2

SIZE	PRICE
1 1/2" x 1 1/2"	\$30.40



CKB.MS 1 3/4

SIZE	PRICE
1 3/4" x 1 3/4"	\$38.00



CKB.RD 1 1/2

DIA.	PRICE
1 1/2"	\$24.70



CKB.RD 1 3/4

DIA.	PRICE
1 3/4"	\$32.10



CKB.FW

DIA.	PRICE
1 1/2"	\$34.70



CKB.FS

SIZE	PRICE
5" x 1 1/2"	\$36.40



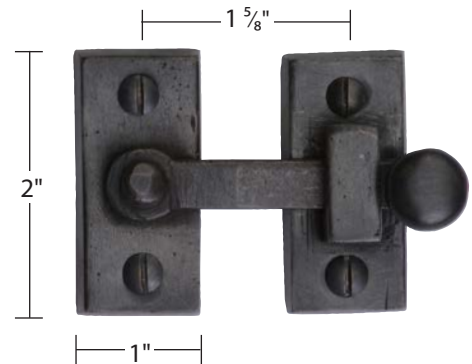
CKB.FL

SIZE	PRICE
6 1/2" x 1 1/4"	\$36.40



CKB.CL

SIZE	PRICE
3 1/2" x 1 3/4"	\$57.30



Cabinet Latch

ITEM	SIZE	CTC	PRICE
1257	2" x 1"	1 5/8"	\$76.30

SOLID BRONZE CABINET PULLS



Traditional Cup Pull

ITEM	SIZE	PROJ.	PRICE
A 1700	3 7/8" x 1 5/8"	3/4"	\$57.10
B 1710	6" x 1 7/8"	1 1/8"	\$79.60



Industrial Cup Pull

ITEM	CTC	SIZE	PROJ.	PRICE
1720 5 5/8"	3"	5 5/8" x 1 5/8"	1"	\$71.50
1720 8 5/8"	6"	8 5/8" x 1 5/8"	1"	\$85.80
1720 10 5/8"	8"	10 5/8" x 1 5/8"	1"	\$99.90



Alexander Cup Pull

ITEM	SIZE	PROJ.	PRICE
1730	4 1/16" x 1 1/2"	3/4"	\$57.10

Grace Pull

ITEM	CTC	LENGTH	WIDTH	PROJ.	PRICE
3321 4	96mm	5"	1 ¼"	1 ¼"	\$71.50
3321 6	6"	7 ¼"	1 ¼"	1 ¼"	\$103.00



Darwen Pull

ITEM	CTC	LENGTH	PROJ.	PRICE
392 4	96mm	5"	1 ⅜"	\$64.00
392 6	6"	7 ¼"	1 ⅜"	\$74.00



Flat Pull

ITEM	CTC	SIZE	PROJ.	PRICE
393	96mm	5 ½" x ¾"	1 ⅛"	\$68.00





Kali Pull

ITEM	CTC	LENGTH	PROJ.	PRICE
3343 5 1/2"	96mm	5 1/2"	1 1/2"	\$67.70
3343 7 3/4"	6"	7 3/4"	1 1/2"	\$84.70



Baron Pull

ITEM	CTC	LENGTH	WIDTH	PROJ.	PRICE
3313 4	4"	4 7/8"	3/8"	1 1/4"	\$63.80
3313 6	6"	6 7/8"	3/8"	1 1/4"	\$73.70
3313 10	10"	10 7/8"	3/8"	1 1/4"	\$89.20



Adria Pull

ITEM	CTC	LENGTH	WIDTH	PROJ.	PRICE
3960 4	4"	4 3/8"	1/2"	1 3/8"	\$66.10
3960 6	6"	6 1/2"	5/8"	1 1/2"	\$76.00
3960 10	10"	10 1/2"	3/4"	1 5/8"	\$91.50





Box Cup Pull

ITEM	CTC	LENGTH	WIDTH	PROJ.	PRICE
357 4	96mm	4 ¼"	7/8"	7/8"	\$72.50
357 6	5 ½"	6"	7/8"	7/8"	\$80.10
357 9	8 ½"	9"	7/8"	7/8"	\$94.80



Flush Ring Pull

ITEM	SIZE	DIA.	PROJ.	PRICE
1166	2" x 2 ½"	1 ¼"	1/8"	\$66.80



Twig Pull

ITEM	CTC	LENGTH	PROJ.	PRICE
373	96mm	5"	1"	\$64.80

Textured Pull

ITEM	CTC	LENGTH	WIDTH	PROJ.	PRICE
3425 5 3/4	96mm	5 3/4"	5/8"	1 1/8"	\$74.80
3425 8 1/8	6"	8"	5/8"	1 1/8"	\$85.80
3425 10 1/8	8"	10"	5/8"	1 1/8"	\$96.40
3425 12 1/8	10"	12"	5/8"	1 1/8"	\$107.00



Axiom Pull

ITEM	CTC	LENGTH	WIDTH	PROJ.	PRICE
3363 4 1/4	96mm	4 1/4"	1/2"	1 1/4"	\$68.50
3363 6 1/2	6"	6 1/2"	1/2"	1 1/4"	\$76.30
3363 8 1/2	8"	8 1/2"	1/2"	1 1/4"	\$84.00
3363 10 1/2	10"	10 1/2"	1/2"	1 1/4"	\$91.20



'T' Pull

ITEM	CTC	LENGTH	WIDTH	PROJ.	PRICE
317 4 1/2	96mm	4 1/2"	5/8"	1 1/4"	\$67.70
317 6 3/4	6"	6 3/4"	5/8"	1 1/4"	\$78.70
317 8 3/4	8"	8 3/4"	5/8"	1 1/4"	\$92.80
317 10 3/4	10"	10 3/4"	5/8"	1 1/4"	\$104.00





Hex Profile Pull

ITEM	CTC	LENGTH	WIDTH	PROJ.	PRICE
4473 4	96mm	4 ¼"	½"	1 ⅜"	\$71.50
4473 6	6"	6 ½"	½"	1 ⅜"	\$80.30
4473 8	8"	8 ½"	½"	1 ⅜"	\$89.50
4473 10	10"	10 ½"	½"	1 ⅜"	\$100.00



Algarve Pull

ITEM	CTC	LENGTH	WIDTH	PROJ.	PRICE
3405 4	96mm	4 ¼"	⅞"	1 ¼"	\$63.30
3405 6	6"	6 ⅜"	⅞"	1 ¼"	\$74.50
3405 8	8"	8 ⅜"	⅞"	1 ¼"	\$85.90
3405 10	10"	10 ⅜"	⅞"	1 ¼"	\$96.20



Abigail Pull

ITEM	CTC	LENGTH	WIDTH	PROJ.	PRICE
3360 4	96mm	4 ¼"	⅜"	1 ¼"	\$65.10
3360 6	6"	6 ½"	⅜"	1 ¼"	\$72.50
3360 8	8"	8 ½"	⅜"	1 ¼"	\$80.20
3360 10	10"	10 ½"	⅜"	1 ¼"	\$87.30



Bradley Pull

ITEM	CTC	LENGTH	WIDTH	PROJ.	PRICE
3295 4	96mm	4 1/4"	1/2"	1 3/8"	\$71.50
3295 6	6"	6 3/8"	1/2"	1 3/8"	\$80.30
3295 8	8"	8 3/8"	1/2"	1 3/8"	\$89.50
3295 10	10"	10 3/8"	1/2"	1 3/8"	\$100.00



Hadley Pull

ITEM	CTC	LENGTH	WIDTH	PROJ.	PRICE
3250 4	96mm	4 3/8"	5/8"	1 3/8"	\$63.30
3250 6	6"	6 5/8"	5/8"	1 3/8"	\$74.50
3250 8	8"	8 5/8"	5/8"	1 3/8"	\$85.90
3250 10	10"	10 5/8"	5/8"	1 3/8"	\$96.10



Bow Pull

ITEM	CTC	LENGTH	WIDTH	PROJ.	PRICE
3512 4	96mm	4 1/4"	1/2"	1 1/4"	\$63.30
3512 6	6"	6 1/2"	5/8"	1 1/4"	\$74.50
3512 8	8"	8 1/2"	5/8"	1 1/4"	\$85.90
3512 10	10"	10 1/2"	5/8"	1 1/4"	\$96.20



Tuscany Pull

ITEM	CTC	LENGTH	WIDTH	PROJ.	PRICE
340 4 1/2	96mm	4 1/2"	5/8"	1 5/8"	\$70.20
340 6 3/4	6"	6 3/4"	5/8"	1 5/8"	\$80.10
340 8 3/4	8"	8 3/4"	5/8"	1 5/8"	\$92.80
340 10 3/4	10"	10 3/4"	5/8"	1 5/8"	\$104.00



Aztec Pull

ITEM	CTC	LENGTH	WIDTH	PROJ.	PRICE
396 5 1/4	96mm	5 1/4"	5/8"	1 1/4"	\$73.30
396 7 1/2	6"	7 1/2"	5/8"	1 1/4"	\$85.80



Rope Pull

ITEM	CTC	LENGTH	WIDTH	PROJ.	PRICE
301 5 1/4	96mm	5 1/4"	1/2"	1 3/8"	\$64.80
301 7 1/2	5 1/2"	7 1/2"	1/2"	1 3/8"	\$72.50
301 9 1/2	7"	9 1/2"	1/2"	1 3/8"	\$80.70
301 11 1/2	8 1/2"	11 1/2"	1/2"	1 3/8"	\$88.90

Fleur-de-Lis Pull

ITEM	LENGTH	WIDTH	PROJ.	PRICE
1092 4	4"	3/8"	1"	\$49.60
1092 6	6"	3/8"	1"	\$58.90
1092 8	8"	3/8"	1"	\$68.50
1092 10	10"	3/8"	1"	\$77.80



Twist Pull

ITEM	LENGTH	WIDTH	PROJ.	PRICE
370 5 5/8	5 5/8"	3/8"	1 1/8"	\$64.40
370 8	8"	3/8"	1 1/8"	\$79.30
370 10	10"	3/8"	1 1/8"	\$86.90



Sash Pull

ITEM	LENGTH	WIDTH	PROJ.	PRICE
1090 4	4"	3/8"	1"	\$41.10
1090 6	6"	3/8"	1 1/4"	\$50.90
1090 8	8"	3/8"	1 3/8"	\$60.30
1090 10	10"	3/8"	1 3/8"	\$70.00





Avon Pull

ITEM	LENGTH	WIDTH	PROJ.	PRICE
3378 6	6"	3/8"	1 1/4"	\$64.40
3378 8	8"	3/8"	1 1/4"	\$71.50

Foot Size: 1 1/8" x 1"



Traditional Pull on Plate

ITEM	LENGTH	WIDTH	PROJ.	PRICE
1142 7	6 7/8"	3/4"	1 3/4"	\$95.30
1142 9	9"	3/4"	1 3/4"	\$110.00

Plate Width: 1 1/8"



Offset Pull

ITEM	LENGTH	WIDTH	PROJ.	PRICE
1145 6 1/4	6 1/4"	1/2"	1 1/2"	\$63.10
1145 8 1/4	8 1/4"	1/2"	1 1/2"	\$70.50
1145 10 1/4	10 1/4"	1/2"	1 1/2"	\$77.80

Plate Width: 1"



Bedford Pull

ITEM	CTC	LENGTH	WIDTH	PROJ.	PRICE
341 4 ¼	96mm	4 ¼"	¾"	1 ¼"	\$71.50
341 6 ½	6"	6 ½"	¾"	1 ¼"	\$82.10
341 8 ½	8"	8 ½"	¾"	1 ¼"	\$92.40
341 10 ½	10"	10 ½"	¾"	1 ¼"	\$103.00



Traditional Pull

ITEM	CTC	LENGTH	WIDTH	PROJ.	PRICE
376 5	96mm	5"	⅜"	1 ¼"	\$64.20
376 7 ¼	6"	7 ¼"	⅜"	1 ¼"	\$75.20
376 9 ¼	8"	9 ¼"	⅜"	1 ¼"	\$86.70
376 11 ¼	10"	11 ¼"	⅜"	1 ¼"	\$98.20
376 13 ¼	12"	13 ¼"	⅜"	1 ¼"	\$110.00
376 17 ¼	16"	17 ¼"	½"	1 ¼"	\$134.00



Pyramid Pull

ITEM	CTC	LENGTH	WIDTH	PROJ.	PRICE
3626 6 ¼	96mm	6 ¼"	1"	1 ⅝"	\$81.20
3626 9	6 ½"	9"	1"	1 ⅝"	\$98.40



Straight Pull

ITEM	CTC	LENGTH	WIDTH	PROJ.	PRICE
361 5 ¼	96mm	5 ¼"	½"	1 ⅜"	\$64.40
361 7 ½	5 ½"	7 ½"	½"	1 ⅜"	\$72.10
361 9 ½	7"	9 ½"	½"	1 ⅜"	\$79.60
361 11 ½	8 ½"	11 ½"	½"	1 ⅜"	\$89.10



Tapered Pull

ITEM	CTC	LENGTH	WIDTH	PROJ.	PRICE
351 5 ¼	96mm	5 ¼"	½"	1 ⅜"	\$64.40
351 7 ½	5 ½"	7 ½"	½"	1 ⅜"	\$72.10
351 9 ½	7"	9 ½"	½"	1 ⅜"	\$79.60
351 11 ½	8 ½"	11 ½"	½"	1 ⅜"	\$89.10



Traditional Hex Pull

ITEM	CTC	LENGTH	WIDTH	PROJ.	PRICE
371 5	96mm	4 ⅞"	½"	1 ⅜"	\$64.40
371 7 ½	5 ½"	7 ½"	½"	1 ⅜"	\$72.10
371 9 ½	7"	9 ½"	½"	1 ⅜"	\$79.60
371 11 ½	8 ½"	11 ½"	½"	1 ⅜"	\$89.10



'D' Pull

ITEM	CTC	LENGTH	WIDTH	PROJ.	PRICE
331 4 ¼	96mm	4 ¼"	½"	1 ⅜"	\$64.40
331 6 ½	6"	6 ½"	½"	1 ⅜"	\$72.10
331 8 ½	8"	8 ½"	½"	1 ⅜"	\$79.60
331 10 ½	10"	10 ½"	½"	1 ⅜"	\$89.10
331 16 ½	16"	16 ½"	½"	1 ⅜"	\$136.00



Arc Pull

ITEM	CTC	LENGTH	WIDTH	PROJ.	PRICE
3402 4 ⅝	96mm	4 ⅝"	¾"	1 ⅞"	\$71.50
3402 6 ¾	6"	6 ¾"	¾"	1 ⅞"	\$80.30
3402 8 ¾	8"	8 ¾"	¾"	1 ⅞"	\$89.50
3402 10 ¾	10"	10 ¾"	¾"	1 ⅞"	\$99.50



Deco Pull

ITEM	CTC	LENGTH	WIDTH	PROJ.	PRICE
3334 4 ⅜	96mm	4 ⅜"	1"	1 ¼"	\$71.50
3334 6 ⅝	6"	6 ⅝"	1"	1 ¼"	\$80.30
3334 8 ⅝	8"	8 ⅝"	1"	1 ¼"	\$89.50
3334 10 ⅝	10"	10 ⅝"	1"	1 ¼"	\$99.90





Bauhaus Pull

ITEM	CTC	LENGTH	WIDTH	PROJ.	PRICE
3312 4 3/8"	96mm	4 3/8"	5/8"	1 3/8"	\$71.20
3312 6 5/8"	6"	6 5/8"	5/8"	1 3/8"	\$82.10
3312 8 5/8"	8"	8 5/8"	5/8"	1 3/8"	\$96.20
3312 10 5/8"	10"	10 5/8"	5/8"	1 3/8"	\$107.00
3312 16 5/8"	16"	16 5/8"	5/8"	1 3/8"	\$138.00



Durham Pull

ITEM	CTC	LENGTH	WIDTH	PROJ.	PRICE
3721 4 7/8"	96mm	4 7/8"	5/8"	1 1/4"	\$67.20
3721 7 1/8"	6"	7 1/8"	5/8"	1 1/4"	\$76.30
3721 9 1/8"	8"	9 1/8"	5/8"	1 1/4"	\$84.70
3721 11 1/8"	10"	11 1/8"	5/8"	1 1/4"	\$93.50



Claros Pull

ITEM	CTC	LENGTH	WIDTH	PROJ.	PRICE
3348 4 1/4"	96mm	4 1/4"	1/4"	1 3/8"	\$68.50
3348 6 1/2"	6"	6 1/2"	1/4"	1 3/8"	\$76.30
3348 8 1/2"	8"	8 1/2"	1/4"	1 3/8"	\$84.00
3348 10 1/2"	10"	10 1/2"	1/4"	1 3/8"	\$91.20



Artisanal Pull

ITEM	CTC	LENGTH	WIDTH	PROJ.	PRICE
3325 4 1/2	96mm	4 1/2"	1/2"	1 1/2"	\$74.50
3325 6 3/4	6"	6 3/4"	1/2"	1 1/2"	\$85.50
3325 8 3/4	8"	8 3/4"	1/2"	1 1/2"	\$95.80
3325 10 3/4	10"	10 3/4"	1/2"	1 1/2"	\$107.00



Front Mount Edge Pull

ITEM	LENGTH	HEIGHT	PROJ.	PRICE
3384 1 1/2	1 1/2"	3/4"	1 1/8"	\$35.60
3384 3	3"	3/4"	1 1/8"	\$53.50
3384 6	6"	3/4"	1 1/8"	\$78.10

Installed with wood screws into face of cabinet



Metro Pull

ITEM	CTC	LENGTH	WIDTH	PROJ.	PRICE
3476 4 1/8	96mm	4 1/8"	3/4"	1 1/8"	\$67.50
3476 6 3/8	6"	6 3/8"	3/4"	1 1/8"	\$77.80
3476 8 3/8	8"	8 3/8"	3/4"	1 1/8"	\$88.50
3476 10 3/8	10"	10 3/8"	3/4"	1 1/8"	\$99.20



Urban Pull

ITEM	CTC	LENGTH	WIDTH	PROJ.	PRICE
337 4 1/2	96mm	4 1/2"	3/8"	1 1/8"	\$67.50
337 6 3/4	6"	6 3/4"	3/8"	1 1/8"	\$75.20
337 8 3/4	8"	8 3/4"	3/8"	1 1/8"	\$82.60
337 10 3/4	10"	10 3/4"	3/8"	1 1/8"	\$90.10
337 12 3/4	12"	12 3/4"	3/8"	1 1/8"	\$100.00
337 16 3/4	16"	16 3/4"	3/8"	1 1/8"	\$132.00



Urban Offset Pull

ITEM	CTC	LENGTH	WIDTH	PROJ.	PRICE
3383 4 3/8	96mm	4 3/8"	5/8"	1 1/8"	\$78.10
3383 6 5/8	6"	6 5/8"	5/8"	1 1/8"	\$89.10
3383 8 5/8	8"	8 5/8"	5/8"	1 1/8"	\$99.50
3383 10 5/8	10"	10 5/8"	5/8"	1 1/8"	\$110.00

Offset: 1 5/8"



Wide Urban Pull

ITEM	CTC	LENGTH	WIDTH	PROJ.	PRICE
338 4 1/8	96mm	4 1/8"	3/4"	1 1/8"	\$85.50
338 6 3/8	6"	6 3/8"	3/4"	1 1/8"	\$94.30
338 8 3/8	8"	8 3/8"	3/4"	1 1/8"	\$103.00
338 10 3/8	10"	10 3/8"	3/4"	1 1/8"	\$112.00



Angular Pull

ITEM	CTC	LENGTH	WIDTH	PROJ.	PRICE
3465 4 1/4"	96mm	4 1/4"	1/2"	1 1/4"	\$71.20
3465 6 3/8"	6"	6 3/8"	1/2"	1 1/4"	\$82.10
3465 8 3/8"	8"	8 3/8"	1/2"	1 1/4"	\$92.40
3465 10 3/8"	10"	10 3/8"	1/2"	1 1/4"	\$103.00



Bar Pull

ITEM	CTC	LENGTH	WIDTH	PROJ.	PRICE
3430 5 3/4"	96mm	5 3/4"	1/2"	1 1/4"	\$66.10
3430 8 1/8"	6"	8 1/8"	1/2"	1 1/4"	\$76.00
3430 10 1/8"	8"	10 1/8"	1/2"	1 1/4"	\$83.60
3430 12 1/8"	10"	12 1/8"	1/2"	1 1/4"	\$90.90



Linear Pull

ITEM	CTC	LENGTH	WIDTH	PROJ.	PRICE
3480 4 1/8"	96mm	4 1/8"	5/8"	1 1/4"	\$74.80
3480 6 3/8"	6"	6 3/8"	5/8"	1 1/4"	\$85.50
3480 8 3/8"	8"	8 3/8"	5/8"	1 1/4"	\$96.20
3480 10 3/8"	10"	10 3/8"	5/8"	1 1/4"	\$107.00



Apollo Pull

ITEM	CTC	LENGTH	WIDTH	PROJ.	PRICE
345 4 1/2	96mm	4 1/2"	3/8"	1 3/8"	\$65.70
345 6 3/4	6"	6 3/4"	3/8"	1 3/8"	\$73.30
345 8 3/4	8"	8 3/4"	3/8"	1 3/8"	\$80.90
345 10 3/4	10"	10 3/4"	3/8"	1 3/8"	\$88.10
345 12 3/4	12"	12 3/4"	3/8"	1 3/8"	\$98.60
345 16 3/4	16"	16 3/4"	7/16"	1 3/8"	\$131.00



'L' Pull

ITEM	CTC	LENGTH	WIDTH	PROJ.	PRICE
347 4 1/2	96mm	4 1/2"	1 1/8"	7/8"	\$67.70
347 6 3/4	6"	6 3/4"	1 1/8"	7/8"	\$78.70
347 8 3/4	8"	8 3/4"	1 1/8"	7/8"	\$89.10
347 10 3/4	10"	10 3/4"	1 1/8"	7/8"	\$99.90





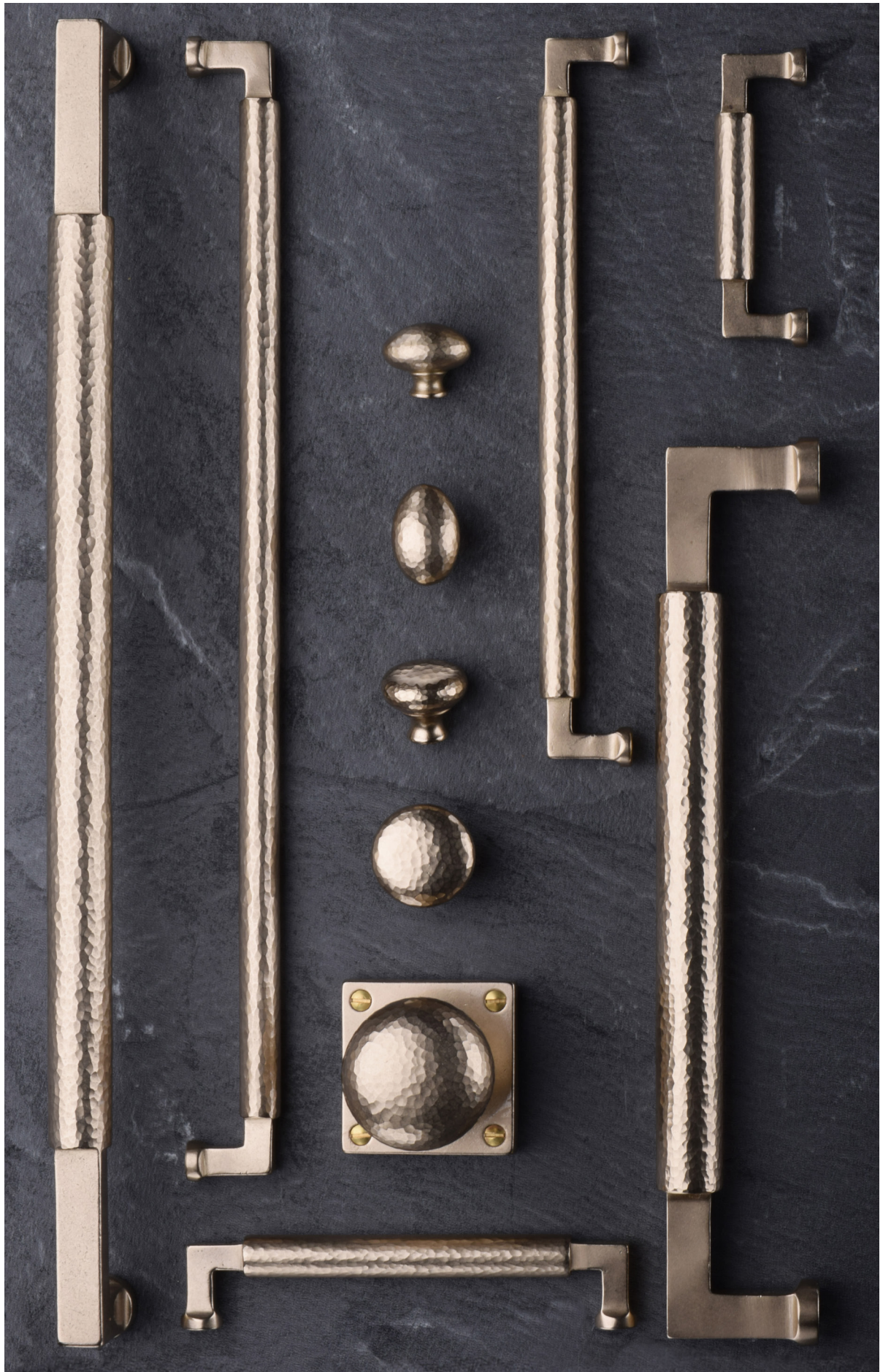
Hammered Bauhaus Pull

ITEM	CTC	LENGTH	WIDTH	PROJ.	PRICE
H3312 4 3/8"	4"	4 3/8"	5/8"	1 3/8"	\$95.00
H3312 6 5/8"	6"	6 5/8"	5/8"	1 3/8"	\$110.00
H3312 10 5/8"	10"	10 5/8"	5/8"	1 3/8"	\$142.00
H3312 16 5/8"	16"	16 5/8"	5/8"	1 3/8"	\$176.00



Hammered Urban Pull

ITEM	CTC	LENGTH	WIDTH	PROJ.	PRICE
H337 4 1/2"	96mm	4 1/2"	3/8"	1 1/8"	\$84.00
H337 6 3/4"	6"	6 3/4"	3/8"	1 1/8"	\$98.00
H337 10 3/4"	10"	10 3/4"	3/8"	1 1/8"	\$130.00
H337 16 3/4"	16"	16 3/4"	1/2"	1 1/8"	\$176.00





Rectangular Backplate

ITEM	CTC	SIZE	PRICE
CPB.PL96	96mm	5 1/2" x 1 1/8"	\$45.60
CPB.PL152	6"	7 1/2" x 1 1/8"	\$64.40
CPB.PL203	8"	8 1/2" x 1 1/8"	\$73.10
CPB.PL254	10"	10 1/2" x 1 1/8"	\$90.60



Angled Drop Pull

ITEM	CTC	PROJ.	PRICE
6272 4	96mm	1 1/8"	\$64.80
6272 5 1/2	5 1/2"	1 1/8"	\$74.20



Twist Drop Pull

ITEM	CTC	PROJ.	PRICE
6269 4	96mm	1"	\$64.80
6269 5 1/2	5 1/2"	1"	\$74.20



Tuscany Drop Pull

ITEM	CTC	PROJ.	PRICE
6267 4	96mm	3/4"	\$72.50
6267 5 1/2	5 1/2"	3/4"	\$84.00



Oval Drop Pull

ITEM	CTC	SIZE	PROJ.	PRICE
6266	2 1/2"	3 3/4" x 1 7/8"	7/8"	\$76.30

Audrey Drop Pull

ITEM	CTC	SIZE	PROJ.	PRICE
6353	1 ¼"	3 ⅞" x 1 ¼"	¾"	\$80.10



Helston Drop Pull

ITEM	BACK PLATE	DROP LENGTH	PROJ.	PRICE
6263	3 ⅞" x 1 ⅜"	2 ⅜"	1"	\$58.70



Fleur-de-lis Drop Pull

ITEM	BACK PLATE	RING DIA.	PROJ.	PRICE
6331	2 ¼" x 2 ¼"	1 ⅝"	1"	\$53.20



Drop Pull on Plate

ITEM	BACK PLATE	RING DIA.	PROJ.	PRICE
6369	2 ¼" x 2 ¼"	1 ⅝"	1"	\$53.20





Drop Pull on Plate

ITEM	BACK PLATE	RING DIA.	PROJ	PRICE
6367	2" x 2 1/2"	2"	1"	\$84.00



Diamond Drop Pull

ITEM	BACK PLATE	RING DIA.	PROJ	PRICE
6301	3" x 1 3/4"	2"	1"	\$72.50



Northwich Drop Pull

ITEM	BACK PLATE	DROP LENGTH	PROJ	PRICE
6270	3/4" x 7/8"	2"	7/8"	\$45.40

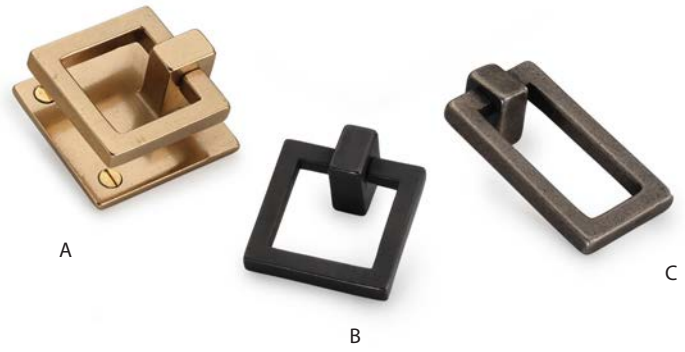


Plymouth Drop Pull

ITEM	BACK PLATE	DROP LENGTH	PROJ	PRICE
6264	1 3/4"	2 1/4"	7/8"	\$53.20

Square Drop Pull

ITEM	SIZE	PROJ.	PRICE
A 6359	1 3/4" x 1 3/4"	1"	\$68.50
B 6355	1 1/2" x 1 1/2"	1"	\$38.00
C 6351	2 1/4" x 1 1/4"	1"	\$49.60



Nora Drop Pull

ITEM	BACK PLATE.	RING DIA.	PROJ.	PRICE
6334 1 1/4	1"	1 1/4"	3/4"	\$50.80
6334 1 5/8	1 5/8"	1 5/8"	3/4"	\$65.70



Round Drop Pull

ITEM	RING DIA.	PROJ.	PRICE
6361	1 5/8"	3/4"	\$34.70



Cheshire Drop Pull

ITEM	SIZE	PROJ.	PRICE
6265	3 1/2" x 1 5/8"	1/2"	\$49.60



SOLID BRONZE APPLIANCE PULLS



1960 Adria Appliance Pull

CTC	LENGTH	DIA.	PROJ.	THRU BOLT		SURFACE MOUNT ¹		BACK TO BACK PAIR ²	
12"	12 15/16"	1 5/16"	2 1/2"	1960 12-TB	\$461	1960 12-SM	\$506	1960 12-BTB	\$967
18"	18 15/16"	1 5/16"	2 1/2"	1960 18-TB	\$586	1960 18-SM	\$631	1960 18-BTB	\$1,217
24"	24 15/16"	1 1/8"	2 1/2"	1960 24-TB	\$780	1960 24-SM	\$825	1960 24-BTB	\$1,605

(1) Suitable only for solid wood doors with minimum thickness of 1 1/4"

(2) Maximum door thickness for Back-to-Back fixing: 3"



1314 Baron Appliance Pull

CTC	LENGTH	WIDTH	PROJ.	THRU BOLT	
12"	13 1/8"	3/4"	2"	1314 12-TB	\$424
18"	19 5/8"	1"	2 1/8"	1314 18-TB	\$545
24"	26"	1 1/4"	2 1/2"	1314 24-TB	\$726

Baron Appliance Pull is not available in Surface Mount or Back to Back applications





1330 'D' Appliance Pull

CTC	LENGTH	HANDLE SIZE	PROJ.	THRU BOLT		SURFACE MOUNT ¹		BACK TO BACK PAIR ²	
8"	8 ¾"	¾"	2"	1330 9-TB	\$361	1330 9-SM	\$406	1330 9-BTB	\$767
11"	12"	1"	2 ¼"	1330 12-TB	\$461	1330 12-SM	\$506	1330 12-BTB	\$967
17"	18"	1"	2 ⅜"	1330 18-TB	\$586	1330 18-SM	\$631	1330 18-BTB	\$1,217
22 ¾"	24"	1 ¼"	2 ½"	1330 24-TB	\$780	1330 24-SM	\$825	1330 24-BTB	\$1,605

(1) Suitable only for solid wood doors with minimum thickness of 1 ¼"

(2) Maximum door thickness for Back-to-Back fixing: 3"



1310 Traditional Hex Appliance Pull

CTC	LENGTH	HANDLE SIZE	PROJ.	THRU BOLT		SURFACE MOUNT ¹		BACK TO BACK PAIR ²	
5 ½"	8 ½"	¾"	2 ¼"	1310 9-TB	\$361	1310 9-SM	\$406	1310 9-BTB	\$767
7 ¼"	12"	1"	2 ¼"	1310 12-TB	\$461	1310 12-SM	\$506	1310 12-BTB	\$967
11 ½"	18"	1"	2 ⅜"	1310 18-TB	\$586	1310 18-SM	\$631	1310 18-BTB	\$1,217
15 ¾"	24"	1 ¼"	2 ½"	1310 24-TB	\$780	1310 24-SM	\$825	1310 24-BTB	\$1,605

(1) Suitable only for solid wood doors with minimum thickness of 1 ¼"

(2) Maximum door thickness for Back-to-Back fixing: 3"



1721 Durham Appliance Pull

CTC	LENGTH	THRU BOLT		SURFACE MOUNT ¹		BACK TO BACK PAIR ²	
12"	13 ½"	1721 12-TB	\$461	1721 12-SM	\$506	1721 12-BTB	\$967
18"	19 ½"	1721 18-TB	\$586	1721 18-SM	\$631	1721 18-BTB	\$1,217
24"	25 ½"	1721 24-TB	\$780	1721 24-SM	\$825	1721 24-BTB	\$1,605

(1) Suitable only for solid wood doors with minimum thickness of 1 ¼"

(2) Maximum door thickness for Back-to-Back fixing: 3"

All items have a projection of 2 ⅝"

All items have a handle size of 1 x ¾"



1383 Offset Urban Appliance Pull

CTC	LENGTH	THRU BOLT		SURFACE MOUNT ¹		BACK TO BACK PAIR ²	
12"	13"	1383 12-TB	\$461	1383 12-SM	\$506	1383 12-BTB	\$967
18"	19"	1383 18-TB	\$586	1383 18-SM	\$631	1383 18-BTB	\$1,217
24"	25"	1383 24-TB	\$780	1383 24-SM	\$825	1383 24-BTB	\$1,605

(1) Suitable only for solid wood doors with minimum thickness of 1 ¼"

(2) Maximum door thickness for Back-to-Back fixing: 3"

All items have a projection of 2"

All items have a handle size of 1" x ⅝"

All items offset will be 3"



1340 Tuscany Appliance Pull

CTC	LENGTH	THRU BOLT		SURFACE MOUNT ¹		BACK TO BACK PAIR ²	
11"	12"	1340 12-TB	\$461	1340 12-SM	\$506	1340 12-BTB	\$967
17"	18"	1340 18-TB	\$586	1340 18-SM	\$631	1340 18-BTB	\$1,217

(1) Suitable only for solid wood doors with minimum thickness of 1 ¼"

(2) Maximum door thickness for Back-to-Back fixing: 3"

All items have a projection of 2 ¼"

All items have a diameter of 1"



1450 Apollo Appliance Pull

CTC	LENGTH	THRU BOLT		SURFACE MOUNT ¹		BACK TO BACK PAIR ²	
8"	8 ¾"	1450 9-TB	\$361	1450 9-SM	\$406	1450 9-BTB	\$767
11"	12"	1450 12-TB	\$461	1450 12-SM	\$506	1450 12-BTB	\$967
17"	18"	1450 18-TB	\$586	1450 18-SM	\$631	1450 18-BTB	\$1,217
22 ¾"	24"	1450 24-TB	\$780	1450 24-SM	\$825	1450 24-BTB	\$1,605
36"	37 ¾"	1450 36-TB	\$971			1450 36-BTB	\$1,987

(1) Suitable only for solid wood doors with minimum thickness of 1 ¼"

(2) Maximum door thickness for Back-to-Back fixing: 3"

All items have a projection of 2 ¾"

All items have a handle size of 1" x 5/8"



1325 Artisanal Appliance Pull

CTC	LENGTH	WIDTH	THRU BOLT		SURFACE MOUNT ¹		BACK TO BACK PAIR ²	
12"	12 7/8"	3/4"	1325 12-TB	\$461	1325 12-SM	\$506	1325 12-BTB	\$967
18"	19"	3/4"	1325 18-TB	\$586	1325 18-SM	\$631	1325 18-BTB	\$1,217
24"	25"	7/8"	1325 24-TB	\$780	1325 24-SM	\$825	1325 24-BTB	\$1,605

(1) Suitable only for solid wood doors with minimum thickness of 1 1/4"

(2) Maximum door thickness for Back-to-Back fixing: 3"

All items have a projection of 2 1/4"



1473 Hex Profile Appliance Pull

CTC	LENGTH	WIDTH	PROJ.	THRU BOLT		SURFACE MOUNT ¹		BACK TO BACK PAIR ²	
12"	12 7/8"	3/4"	2 1/4"	1473 12-TB	\$461	1473 12-SM	\$506	1473 12-BTB	\$967
18"	18 7/8"	3/4"	2 1/4"	1473 18-TB	\$586	1473 18-SM	\$631	1473 18-BTB	\$1,217
24"	25"	7/8"	2 3/8"	1473 24-TB	\$780	1473 24-SM	\$825	1473 24-BTB	\$1,605

(1) Suitable only for solid wood doors with minimum thickness of 1 1/4"

(2) Maximum door thickness for Back-to-Back fixing: 3"



1626 Pyramid Appliance Pull

CTC	LENGTH	WIDTH	THRU BOLT		SURFACE MOUNT ¹		BACK TO BACK PAIR ²	
12"	14 3/8"	1"	1626 12-TB	\$424	1626 12-SM	\$469	1626 12-BTB	\$893
18"	20 3/8"	1 1/8"	1626 18-TB	\$545	1626 18-SM	\$590	1626 18-BTB	\$1,135
24"	26 3/8"	1 1/8"	1626 24-TB	\$726	1626 24-SM	\$771	1626 24-BTB	\$1,497

(1) Suitable only for solid wood doors with minimum thickness of 1 1/4"

(2) Maximum door thickness for Back-to-Back fixing: 3"

All items have a projection of 1 3/4"



1259 Hadley Appliance Pull

CTC	LENGTH	WIDTH	THRU BOLT		SURFACE MOUNT ¹		BACK TO BACK PAIR ²	
12"	13"	7/8"	1259 12-TB	\$424	1259 12-SM	\$469	1259 12-BTB	\$893
18"	19"	1"	1259 18-TB	\$545	1259 18-SM	\$590	1259 18-BTB	\$1,135
24"	25"	1"	1259 24-TB	\$726	1259 24-SM	\$771	1259 24-BTB	\$1,497

(1) Suitable only for solid wood doors with minimum thickness of 1 1/4"

(2) Maximum door thickness for Back-to-Back fixing: 3"

All items have a projection of 2 3/8"



1300 Rope Appliance Pull

CTC	LENGTH	HANDLE SIZE	PROJ.	THRU BOLT		SURFACE MOUNT ¹		BACK TO BACK PAIR ²	
7 ¼"	12"	1"	2 ¼"	1300 12-TB	\$424	1300 12-SM	\$469	1300 12-BTB	\$893
11 ½"	18"	1"	2 ¾"	1300 18-TB	\$545	1300 18-SM	\$590	1300 18-BTB	\$1,135
15 ¾"	24"	1 ¼"	2 ½"	1300 24-TB	\$726	1300 24-SM	\$771	1300 24-BTB	\$1,497

(1) Suitable only for solid wood doors with minimum thickness of 1 ¼"

(2) Maximum door thickness for Back-to-Back fixing: 3"



1350 Tapered Appliance Pull

CTC	LENGTH	HANDLE SIZE	PROJ.	THRU BOLT		SURFACE MOUNT ¹		BACK TO BACK PAIR ²	
5 ½"	8 ½"	¾"	2"	1350 9-TB	\$304	1350 9-SM	\$349	1350 9-BTB	\$653
7 ¼"	12"	1"	2 ¼"	1350 12-TB	\$424	1350 12-SM	\$469	1350 12-BTB	\$893
11 ½"	18"	1"	2 ¾"	1350 18-TB	\$545	1350 18-SM	\$590	1350 18-BTB	\$1,135
15 ¾"	24"	1 ¼"	2 ½"	1350 24-TB	\$726	1350 24-SM	\$771	1350 24-BTB	\$1,497

(1) Suitable only for solid wood doors with minimum thickness of 1 ¼"

(2) Maximum door thickness for Back-to-Back fixing: 3"



1334 Deco Appliance Pull

CTC	LENGTH	THRU BOLT		SURFACE MOUNT ¹		BACK TO BACK PAIR ²	
12"	13"	1334 12-TB	\$424	1334 12-SM	\$469	1334 12-BTB	\$893
18"	19"	1334 18-TB	\$545	1334 18-SM	\$590	1334 18-BTB	\$1,135
24"	25 ¼"	1334 24-TB	\$726	1334 24-SM	\$771	1334 24-BTB	\$1,497

(1) Suitable only for solid wood doors with minimum thickness of 1 ¼"

(2) Maximum door thickness for Back-to-Back fixing: 3"

All items have a projection of 2"

All items have a handle size of 1 ⅝"



1376 Traditional Appliance Pull

CTC	LENGTH	WIDTH	PROJ.	THRU BOLT		SURFACE MOUNT ¹		BACK TO BACK PAIR ²	
8"	9 ¼"	¾"	2 ¼"	1376 9-TB	\$361	1376 9-SM	\$406	1376 9-BTB	\$767
11"	12 ½"	1"	2 ½"	1376 12-TB	\$461	1376 12-SM	\$506	1376 12-BTB	\$967
17"	19"	1"	2 ½"	1376 18-TB	\$586	1376 18-SM	\$631	1376 18-BTB	\$1,217
22 ¾"	24 ½"	1 ¼"	2 ½"	1376 24-TB	\$780	1376 24-SM	\$825	1376 24-BTB	\$1,605
36"	38 ¼"	1 ¼"	2 ½"	1376 36-TB	\$971			1376 36-BTB	\$1,987

(1) Suitable only for solid wood doors with minimum thickness of 1 ¼"

(2) Maximum door thickness for Back-to-Back fixing: 3"





1312 Bauhaus Appliance Pull

CTC	LENGTH	THRU BOLT		SURFACE MOUNT ¹		BACK TO BACK PAIR ²	
12"	13"	1312 12-TB	\$461	1312 12-SM	\$506	1312 12-BTB	\$967
18"	19"	1312 18-TB	\$586	1312 18-SM	\$631	1312 18-BTB	\$1,217
24"	25"	1312 24-TB	\$780	1312 24-SM	\$825	1312 24-BTB	\$1,605

(1) Suitable only for solid wood doors with minimum thickness of 1 ¼"

(2) Maximum door thickness for Back-to-Back fixing: 3"

All items have a projection of 2 ¾"

All items have a handle size of 1"



1390 Urban Appliance Pull

CTC	LENGTH	THRU BOLT		SURFACE MOUNT ¹		BACK TO BACK PAIR ²	
8"	8 ¾"	1390 9-TB	\$361	1390 9-SM	\$406	1390 9-BTB	\$767
11"	12"	1390 12-TB	\$461	1390 12-SM	\$506	1390 12-BTB	\$967
17"	18"	1390 18-TB	\$586	1390 18-SM	\$631	1390 18-BTB	\$1,217
22 ¾"	24"	1390 24-TB	\$780	1390 24-SM	\$825	1390 24-BTB	\$1,605
36"	37 ½"	1390 36-TB	\$971			1390 36-BTB	\$1,987

(1) Suitable only for solid wood doors with minimum thickness of 1 ¼"

(2) Maximum door thickness for Back-to-Back fixing: 3"

All items have a projection of 2"

All items have a handle size of 1" x ¾"



H1312 Hammered Bauhaus Appliance Pull

CTC	LENGTH	THRU BOLT		SURFACE MOUNT ¹		BACK TO BACK PAIR ²	
12"	13"	H1312 12-TB	\$551	H1312 12-SM	\$596	H1312 12-BTB	\$1,147
18"	19"	H1312 18-TB	\$706	H1312 18-SM	\$751	H1312 18-BTB	\$1,457
24"	25"	H1312 24-TB	\$960	H1312 24-SM	\$1,005	H1312 24-BTB	\$1,965

(1) Suitable only for solid wood doors with minimum thickness of 1 ¼"

(2) Maximum door thickness for Back-to-Back fixing: 3"

All items have a projection of 2 ¾"

All items have a handle size of 1"



H1390 Hammered Urban Appliance Pull

CTC	LENGTH	THRU BOLT		SURFACE MOUNT ¹		BACK TO BACK PAIR ²	
11"	12"	H1390 12-TB	\$551	H1390 12-SM	\$596	H1390 12-BTB	\$1,147
17"	18"	H1390 18-TB	\$706	H1390 18-SM	\$751	H1390 18-BTB	\$1,457
22 ¾"	24"	H1390 24-TB	\$960	H1390 24-SM	\$1,005	H1390 24-BTB	\$1,965

(1) Suitable only for solid wood doors with minimum thickness of 1 ¼"

(2) Maximum door thickness for Back-to-Back fixing: 3"

All items have a projection of 2"

All items have a handle size of 1" x ¾"



1430 Bar Appliance Pull

CTC	LENGTH	THRU BOLT		SURFACE MOUNT ¹		BACK TO BACK PAIR ²	
8"	12 ¾"	1430 12-TB	\$461	1430 12-SM	\$506	1430 12-BTB	\$967
12"	18 ½"	1430 18-TB	\$586	1430 18-SM	\$631	1430 18-BTB	\$1,217
16"	24 ½"	1430 24-TB	\$780	1430 24-SM	\$825	1430 24-BTB	\$1,605

(1) Suitable only for solid wood doors with minimum thickness of 1 ¼"

(2) Maximum door thickness for Back-to-Back fixing: 3"

All items have a projection of 2 ¾"

All items have a handle size of 1"



1348 Claros Appliance Pull

CTC	LENGTH	HANDLE SIZE	PROJ.	THRU BOLT		SURFACE MOUNT ¹		BACK TO BACK PAIR ²	
12"	13"	1" x ¾"	2 ½"	1348 12-TB	\$461	1348 12-SM	\$506	1348 12-BTB	\$967
18"	19"	1" x ¾"	2 ½"	1348 18-TB	\$586	1348 18-SM	\$631	1348 18-BTB	\$1,217
24"	25 ¼"	1" x 1 ¼"	2 ⅞"	1348 24-TB	\$780	1348 24-SM	\$825	1348 24-BTB	\$1,605

(1) Suitable only for solid wood doors with minimum thickness of 1 ¼"

(2) Maximum door thickness for Back-to-Back fixing: 3"

SOLID BRONZE SHELF BRACKET

8" Curved Shelf Bracket

ITEM	WIDTH	HEIGHT	PROJ.	PRICE
514	¾"	9 ½"	7 ⅝"	\$160

Sold individually



SOLID BRONZE HOOKS



Trunk Hook

ITEM	SIZE	PROJ.	PRICE
395	1 5/8" x 2"	2 1/4"	\$57.60



Single Hook

ITEM	SIZE	PROJ.	PRICE
387	1 1/8" x 1 3/4"	2 5/8"	\$50.00



Double Hook

ITEM	SIZE	PROJ.	PRICE
386	2 3/4" x 1 3/8"	1 1/2"	\$62.70



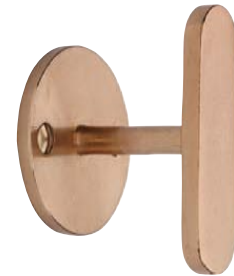
Double Utility Hook

ITEM	SIZE	PROJ.	PRICE
407	2" x 1 1/8"	3 1/4"	\$73.00



Flat J Hook

ITEM	SIZE	PROJ.	PRICE
408	2 3/8" x 1"	2"	\$57.60



Camilla Hook

ITEM	WIDTH	DIA. ROSE	PROJ.	PRICE
413	2 3/4"	2"	1 1/2"	\$68.70



Rivet Hook

ITEM	DIA. FRONT	PROJ.	PRICE
423	1 1/8"	2 1/8"	\$50.00



Ox Hook

ITEM	SIZE	PROJ.	PRICE
422	2 5/8" x 2 3/4"	3/4"	\$56.80



Whale Hook

ITEM	WIDTH	DIA. ROSE	PROJ.	PRICE
421	2 1/2"	2"	2 3/8"	\$68.70





J Hook

ITEM	SIZE	PROJ.	PRICE
417	3 1/8" x 5/8"	1 5/8"	\$52.00



Plated Peg Hook

ITEM	PLATE SIZE	PROJ.	PRICE
419	4" x 1 1/2"	2"	\$85.40



Curved Hook

ITEM	PLATE SIZE	PROJ.	PRICE
404	4 5/8" x 1 3/8"	3 3/4"	\$73.00



Angular Hook

ITEM	PLATE SIZE	PROJ.	PRICE
389	5" x 1/2"	1 3/4"	\$61.60



Double Twist Hook

ITEM	SIZE	PROJ.	PRICE
400	5 3/4" x 1 5/8"	3 1/4"	\$73.00



Coat & Hat Hook

ITEM	SIZE	PROJ.	PRICE
406	5 1/8" x 1 1/4"	1 7/8"	\$73.00



Double Flat J Hook

ITEM	SIZE	PROJ.	PRICE
409	5 1/8" x 1"	3 1/4"	\$85.40



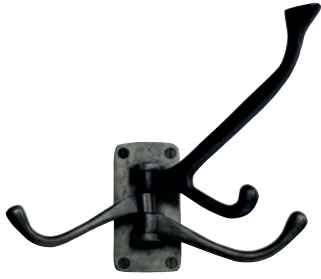
4" Plated Hook

ITEM	PLATE SIZE	PROJ.	PRICE
427	4" x 1 1/8"	1 1/8"	\$102.00



Scroll Hook

ITEM	SIZE	PROJ.	PRICE
405	6 1/4" x 1/2"	2 1/2"	\$78.00



Triple Hook

ITEM	SIZE	PROJ.	PRICE
397	3 1/4" x 1 5/8"	5 3/4"	\$108.00



Cleat Hook

ITEM	SIZE	PROJ.	PRICE
414	5 3/4" x 1"	1 1/2"	\$80.50



8" Plated Hook

ITEM	SIZE	PROJ.	PRICE
428	8" x 1 1/8"	1 1/8"	\$150.00



Line and Dot Hook

ITEM	SIZE	PROJ.	PRICE
420	1 1/2" x 8 1/4"	2 1/8"	\$85.30



Oversized Traditional Hook

ITEM	SIZE	PROJ.	PRICE
424	2 3/4" x 7"	4"	\$105.00



SOLID BRASS

Ashley Norton's Solid Brass cabinet hardware is forged to ensure exceptional finish quality and product durability. Solid Brass cabinet knobs and pulls are available in seven finishes. Oil Rubbed Bronze, Polished Nickel, and Unlacquered Brass are dynamic. These 'living finishes' will take on unique hues as age, climate and touch work their charm, creating an ever-changing patina.

Polished Chrome (PCH) exhibits a highly reflective, mirror-like surface with a cool, bluish-silver tone. **Polished Nickel (PNI)** projects a warm, lustrous, and sophisticated look with subtle, mellow gold undertones. This is a "living finish" and is designed to naturally tarnish and patina over time. **Satin Nickel (GSN)** is defined by its warm subtle gold undertones. It boasts a smooth, velvety texture. **Oil Rubbed Bronze (DOR)** boasts a deep, rich, dark brown color, and is a "living finish" which will naturally patina over time. **Satin Brass (MSB)** showcases a warm, muted, golden-brown finish that is created by brushing the surface of polished brass to give its matte, subtly textured look. **Unlacquered Brass (ULB)**, a living finish, gracefully evolves with time - naturally oxidizing to reveal a one-of-a-kind patina that shifts from radiant golden tones to layered shades of amber, deep brown, and even green/black. **Flat Black (BLK)** exhibits a deep, non-reflective black that is achieved through powder coating.



Satin Nickel (GSN)



Polished Chrome (PCH)



Polished Nickel (PNI)
Living Finish



Satin Brass (MSB)



Unlacquered Brass (ULB)
Living Finish



Oil Rubbed Bronze (DOR)
Living Finish



Flat Black (BLK)



SOLID BRASS KNOBS



Blackburn Knob

ITEM	DIA.	BASE	PROJ.	PRICE
MT4549-032	1 1/4"	5/8"	1 1/8"	\$40.00



Ridged Knob

ITEM	DIA.	BASE	PROJ.	PRICE
MT4547-032	1 1/4"	1/2"	1 1/4"	\$41.00



Blackburn Diamond Knob

ITEM	DIA.	BASE	PROJ.	PRICE
MT4648-032	1 1/4"	5/8"	1 1/8"	\$45.90



Newport Knob

ITEM	DIA.	BASE	PROJ.	PRICE
MT3990-032	1 1/4"	5/8"	1 1/4"	\$21.50
MT3990-038	1 1/2"	5/8"	1 1/4"	\$30.40

Bead Knob

ITEM	DIA.	BASE	PROJ.	PRICE
MT3985-032	1 ¼"	⅝"	1 ¼"	\$21.50
MT3985-038	1 ½"	⅝"	1 ¼"	\$30.40



Hex Knob

ITEM	DIA.	BASE	PROJ.	PRICE
MT2238-032	1 ¼"	⅝"	1 ⅜"	\$21.90



Deco Knob

ITEM	LENGTH	WIDTH	BASE	PROJ.	PRICE
MT0333-032	1 ¼"	⅞"	1 ¼"	1 ⅛"	\$17.40

Cannot be used with backplates



Brighton Knob

ITEM	SIDE TO SIDE	EDGE TO EDGE	BASE	PROJ.	PRICE
MT4334-036	1 ¼"	1 ⅜"	⅞"	1 ⅜"	\$20.20
MT4334-043	1 ½"	1 ¾"	⅞"	1 ⅜"	\$26.70





Helios Knob

ITEM	DIA.	BASE	PROJ.	PRICE
MT3880-032	1 ¼"	7/16"	1 ⅛"	\$17.00
MT3880-038	1 ½"	7/16"	1 ⅛"	\$23.20



Knurled Helios Knob

ITEM	DIA.	BASE	PROJ.	PRICE
MT3884-032	1 ¼"	7/16"	1 ⅛"	\$24.60
MT3884-038	1 ½"	7/16"	1 ⅛"	\$30.80



Bracknell Knob

ITEM	DIA.	BASE	PROJ.	PRICE
MT3885-032	1 ¼"	13/16"	1 ¼"	\$21.50
MT3885-038	1 ½"	13/16"	1 ¼"	\$27.70

Rose included with MT3885 knob. To order rose for use with other knobs, order MT42RD-020 \$8.00



Tayo Knob

ITEM	DIA.	BASE	PROJ.	PRICE
MT3875-032	1 ¼"	5/16"	1 ¼"	\$23.20
MT3875-038	1 ½"	5/16"	1 ¼"	\$29.90

Hex Knob

ITEM	SIDE TO SIDE	EDGE TO EDGE	BASE	PROJ.	PRICE
MT4335-036	1 ¼"	1 ⅜"	1 ⅜"	1 ¼"	\$24.70
MT4335-043	1 ½"	1 ¾"	1 ⅜"	1 ¼"	\$31.10

Rose included with MT4335 knob. To order rose for use with other knobs, order MT42HX-023 \$9.20



Square Knob

ITEM	SIZE	BASE	PROJ.	PRICE
MT3685-032	1 ¼"	⅜"	1 ⅛"	\$20.10
MT3685-038	1 ½"	⅜"	1 ⅛"	\$26.30



Square Stepped Knob

ITEM	DIA.	BASE	PROJ.	PRICE
MT3672-032	1 ¼"	⅝"	1"	\$28.10

Cannot be used with backplates



Round Stepped Knob

ITEM	DIA.	BASE	PROJ.	PRICE
MT3624-032	1 ¼"	⅝"	1"	\$24.80
MT3624-038	1 ½"	⅞"	1"	\$32.40





Bristol Knob

ITEM	LENGTH	WIDTH	BASE	PROJ.	PRICE
MT4670-044	1 3/4"	7/16"	3/4"	1 1/4"	\$18.50



Oval Knob

ITEM	DIA.	BASE	PROJ.	PRICE
MT3975-040	1 5/8"	5/8"	1 3/16"	\$33.70



Reeded Stick Knob

ITEM	DIA.	BASE	PROJ.	PRICE
MT3840-020	1 3/16"	3/4"	1 1/4"	\$31.80



Knurled Stick Knob

ITEM	DIA.	BASE	PROJ.	PRICE
MT3850-020	1 3/16"	3/4"	1 1/4"	\$31.80

Adria Knob

ITEM	DIA.	BASE	PROJ.	PRICE
MT3950-032	1 1/4"	3/4"	1 3/16"	\$30.40
MT3950-038	1 1/2"	3/4"	1 3/16"	\$39.70



Hudson Knob

ITEM	SIZE	BASE	PROJ.	PRICE
MT4382-025	1"	5/8"	1 5/16"	\$25.90
MT4382-035	1 3/8"	5/8"	1"	\$33.50

Cannot be used with backplates



Basel T-Pull

ITEM	LENGTH	WIDTH	PROJ.	PRICE
MT4415-045	1 3/4"	7/16"	1 1/4"	\$22.90



Beacon Knob

ITEM	DIA.	PROJ.	PRICE
MT4553-040	1 5/16"	1 1/2"	\$20.10





Anvil Knob

ITEM	LENGTH	WIDTH	BASE	PROJ.	PRICE
MT2232-035	1 3/8"	7/8"	5/8" x 3/4"	1 1/2"	\$24.80

Cannot be used with backplates

B



A

Reeded Knob

ITEM	DIA.	BASE	PROJ.	PRICE
A MT0974-032	1 1/4"	5/8"	1 5/8"	\$27.10
B MT0973-032	1 1/4"	1 1/4"	1 3/4"	\$37.60



Sphere Knob

ITEM	DIA.	PROJ.	PRICE
MT8323-022	7/8"	1 1/4"	\$13.70
MT8323-028	1 1/8"	1 1/2"	\$21.70



Orb Knob

ITEM	DIA.	PROJ.	PRICE
MT8321-025	1"	1 3/8"	\$24.00
MT8321-032	1 1/4"	1 3/4"	\$27.50
MT8321-038	1 1/2"	1 7/8"	\$41.20





Round Knob

ITEM	DIA.	BASE	PROJ.	PRICE
E MT0117-032	1 ¼"	⅝"	1 ¼"	\$15.90
F MT0117-038	1 ½"	⅝"	1 ¼"	\$23.30
G MT0113-032	1 ¼"	1 ¼"	1 ⅜"	\$24.80
H MT0113-038	1 ½"	1 ½"	1 ⅝"	\$32.10



Egg Knob

ITEM	DIA.	BASE	PROJ.	PRICE
A MT0118-032	1 ¼"	⅝"	1 ⅛"	\$15.10
B MT0118-038	1 ½"	⅝"	1 ¼"	\$21.50
C MT0114-032	1 ¼"	1 ¼"	1 ⅜"	\$23.60
D MT0114-038	1 ½"	1 ½"	1 ½"	\$29.50



Beverly Knob

ITEM	DIA.	PROJ.	PRICE
MT4386-032	1 ¼"	1 ⅝"	\$24.80
MT4386-038	1 ½"	1 ⅞"	\$32.40



Blackburn Reeded Knob

ITEM	DIA.	WIDTH	PROJ.	PRICE
MT4660-032	1 ¼"	⅝"	1 ⅞"	\$45.90

T-Knob

ITEM	LENGTH	WIDTH	BASE	PROJ.	PRICE
MT2234-035	1 3/8"	1/2"	1/2"	1 1/4"	\$17.70

Cannot be used with backplates



Hex T-Pull

ITEM	LENGTH	WIDTH	BASE	PROJ.	PRICE
MT4423-040	1 5/8"	1/2"	5/16"	1 3/8"	\$19.10



Lucerne Reeded T-Bar

ITEM	LENGTH	WIDTH	PROJ.	PRICE
MT4404-045	1 3/4"	7/16"	1 3/16"	\$22.90



Asher Knob

ITEM	LENGTH	WIDTH	PROJ.	PRICE
MT2482-042	1 5/8"	5/8"	1 3/8"	\$20.60





Alston T-Bar

ITEM	LENGTH	WIDTH	PROJ.	PRICE
MT8345-076	3"	¾"	1 ¾"	\$52.00



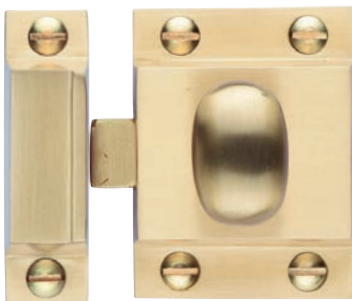
Tayo Hammered Knob

ITEM	DIA.	BASE	PROJ.	PRICE
MT3877-032	1 ¼"	⅝"	1 ¼"	\$42.30
MT3877-038	1 ½"	⅝"	1 ¼"	\$49.20



Hammered Knob

ITEM	DIA.	BASE	PROJ.	PRICE
MT4545-032	1 ¼"	⅝"	1 ⅞"	\$58.20



Oval Knob Cabinet Latch

ITEM	LENGTH	WIDTH	PROJ.	PRICE
MT1112-000	2 ⅞"	1 ⅝"	1 ¼"	\$38.00

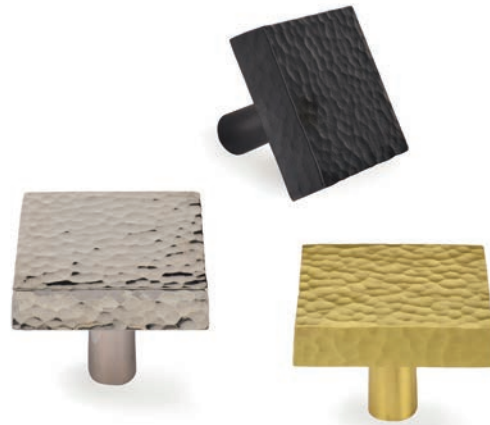
Hammered Disc Knob

ITEM	DIA.	PROJ.	PRICE
MK3880-032	1 ¼"	1 ⅛"	\$20.20
MK3880-038	1 ½"	1 ⅛"	\$27.00



Hammered Square Knob

ITEM	LENGTH	WIDTH	PROJ.	PRICE
MK3685-032	1 ¼"	1 ¼"	1 ⅛"	\$24.70
MK3685-038	1 ½"	1 ½"	1 ⅛"	\$31.50



Hammered Round Knob

ITEM	DIA.	PROJ.	PRICE
MK0117-032	1 ¼"	1 ¼"	\$22.50
MK0117-038	1 ½"	1 ¼"	\$27.00



Hammered Collection available in Polished Nickel (PNI), Satin Nickel (GSN), Satin Brass (MSB), Unlacquered Brass (ULB) and Flat Black (BLK).





Hammered Egg Knob

ITEM	DIA.	PROJ.	PRICE
MK0118-032	1 ¼"	1 ⅛"	\$20.20
MK0118-038	1 ½"	1 ¼"	\$27.00



Hammered Orb Knob

ITEM	DIA.	PROJ.	PRICE
MK8321-032	1 ¼"	1 ⅝"	\$42.70
MK8321-038	1 ½"	1 ¾"	\$58.40



Hammered Collection available in Polished Nickel (PNI), Satin Nickel (GSN), Satin Brass (MSB), Unlacquered Brass (ULB) and Flat Black (BLK).





MT42SQ-063

SIZE	PRICE
2 1/2" x 1 1/2"	\$16.00



MT42SR-063

SIZE	PRICE
2 1/2" x 1 1/2"	\$16.00



MT42MS-038

SIZE	PRICE
1 1/2" x 1 1/2"	\$12.60



MT42FL-163

SIZE	PRICE
6 1/2" x 1 3/8"	\$16.00



MT42TR-021

SIZE	PRICE
7/8"	\$11.00



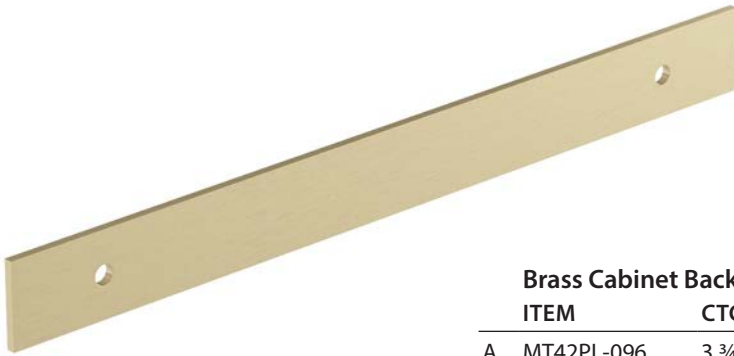
MT42RD-020

DIA.	PRICE
3/4"	\$8.00



MT42HX-023

SIZE	PRICE
3/4" x 3/4"	\$9.20



Brass Cabinet Backplate

ITEM	CTC	LENGTH	WIDTH	PRICE
A MT42PL-096	3 3/4"	5 7/16"	3/4"	\$26.30
B MT42PL-102	4"	5 13/16"	3/4"	\$26.30
C MT42PL-152	6"	7 3/4"	3/4"	\$37.20
D MT42PL-203	8"	9 3/4"	3/4"	\$42.10
E MT42PL-254	10"	11 3/4"	3/4"	\$52.30



Shown with MT4410



Shown with MT4458



Shown with M0337



SOLID BRASS CABINET PULLS



Square Drop Pull

ITEM	SIZE	PRICE
MT6311-050	2" x 2"	\$34.50



Round Drop Pull

ITEM	DIA.	PRICE
MT6321-050	2"	\$31.00
MT6321-063	2 1/2"	\$52.20



Open Hex Drop Pull

ITEM	SIZE	PRICE
MT6334-051	2 3/8"	\$43.00



Hex Back Plate Drop Pull

ITEM	SIZE	PRICE
MT6347-051	2 3/8"	\$67.70

Backplate size (edge to edge): 2 3/4"

Ely Cup Pull

ITEM	CTC	LENGTH	HEIGHT	PROJ.	PRICE
MT2700-057	2 ¼"	3 ¼"	1 ¾"	¾"	\$21.50



Fenland Cup Pull

ITEM	LENGTH	HEIGHT	PROJ.	PRICE
MT1700-000	3 ¾"	1 ¾"	¾"	\$18.10



Ramsey Cup Pull

ITEM	CTC	LENGTH	PROJ.	PRICE
MT2768-089	3 ½"	4 ¼"	1 ⅝"	\$29.30



George Cup Pull

ITEM	CTC	LENGTH	HEIGHT	PROJ.	PRICE
MT2764-064	2 ½"	4 ⅞"	1 ¼"	1"	\$30.90



Industrial Cup Pull

ITEM	CTC	LENGTH	HEIGHT	PROJ.	PRICE
MT2766-096	3" x 3 ¾"	5 ⅞"	1 ⅝"	⅞"	\$33.10
MT2766-152	6" x 7"	8 ¾"	1 ⅝"	⅞"	\$45.10





Gallery Pull

ITEM	LENGTH	HEIGHT	BASE	PROJ.	PRICE
MT0365-000	3 1/2"	3/8"	7/8"	1 1/4"	\$32.40



Knurled T-Pull

ITEM	LENGTH	HEIGHT	BASE	PROJ.	PRICE
MT4463-000	3 5/16"	7/16"	1"	1 3/8"	\$47.40



Basel Knurled Pull

ITEM	CTC	LENGTH	WIDTH	PROJ.	PRICE
MT4458-102	4"	5 1/4"	7/16"	1 3/16"	\$43.00
MT4458-152	6"	7 1/4"	7/16"	1 3/16"	\$55.50
MT4458-203	8"	9 1/4"	7/16"	1 3/16"	\$67.70
MT4458-254	10"	11 1/4"	1/2"	1 3/16"	\$83.20

Bern Partial Knurled Pull

ITEM	CTC	LENGTH	WIDTH	PROJ.	PRICE
MT4461-102	4"	5"	7/16"	1 3/16"	\$43.00
MT4461-152	6"	7"	7/16"	1 3/16"	\$55.50
MT4461-203	8"	9"	7/16"	1 3/16"	\$67.70
MT4461-254	10"	11"	1/2"	1 3/16"	\$83.20



Lucerne Reeded Pull

ITEM	CTC	LENGTH	WIDTH	PROJ.	PRICE
MT4447-102	4"	5 1/4"	7/16"	1 3/16"	\$43.00
MT4447-152	6"	7 1/4"	7/16"	1 3/16"	\$55.50
MT4447-254	10"	9 1/4"	7/16"	1 3/16"	\$83.20



Geneva Stepped Pull

ITEM	CTC	LENGTH	WIDTH	PROJ.	PRICE
MT4410-102	4"	5 1/4"	7/16"	1 3/16"	\$33.10
MT4410-152	6"	7 1/4"	7/16"	1 3/16"	\$41.90
MT4410-203	8"	9 1/4"	7/16"	1 3/16"	\$50.00
MT4410-254	10"	11 1/4"	7/16"	1 3/16"	\$56.60





Zurich Ridged Pull

ITEM	CTC	LENGTH	WIDTH	PROJ.	PRICE
MT4446-102	4"	5 1/2"	7/16"	1 3/16"	\$39.70
MT4446-152	6"	7 1/2"	7/16"	1 3/16"	\$48.50
MT4446-203	8"	9 1/2"	7/16"	1 3/16"	\$58.20
MT4446-254	10"	11 1/2"	7/16"	1 3/16"	\$65.80



Phoenix Pull

ITEM	CTC	LENGTH	WIDTH	PROJ.	PRICE
MT4434-102	4"	4 3/4"	7/16"	1 1/4"	\$33.70
MT4434-152	6"	6 3/4"	7/16"	1 1/4"	\$43.00
MT4434-203	8"	8 3/4"	7/16"	1 1/4"	\$52.40
MT4434-254	10"	10 3/4"	7/16"	1 1/4"	\$61.50



Bar Pull

ITEM	CTC	LENGTH	WIDTH	PROJ.	PRICE
MT0362-102	4"	5 1/2"	7/16"	1 1/4"	\$28.10
MT0362-152	6"	7 1/2"	7/16"	1 1/4"	\$37.80
MT0362-254	10"	11 1/2"	7/16"	1 1/4"	\$51.50



Linear Pull

ITEM	CTC	LENGTH	WIDTH	PROJ.	PRICE
MT3681-096	3 3/4"	5 3/16"	5/16"	1 3/16"	\$31.80
MT3681-152	6"	7 3/8"	5/16"	1 3/16"	\$39.00
MT3681-203	8"	9 3/8"	5/16"	1 3/16"	\$42.10
MT3681-254	10"	11 3/8"	5/16"	1 3/16"	\$49.20



Knurled Bauhaus Pull

ITEM	CTC	LENGTH	WIDTH	PROJ.	PRICE
MT0315-102	4"	4 5/8"	5/8"	1 3/8"	\$45.00
MT0315-152	6"	6 5/8"	5/8"	1 3/8"	\$57.00
MT0315-254	10"	10 5/8"	5/8"	1 3/8"	\$86.00
MT0315-320	12 5/8"	13 1/4"	5/8"	1 3/8"	\$104.00



Adria Pull

ITEM	CTC	LENGTH	WIDTH	PROJ.	PRICE
MT3960-102	4"	4 5/8"	9/16"	1 7/16"	\$38.60
MT3960-152	6"	6 5/8"	5/8"	1 9/16"	\$55.50
MT3960-203	8"	8 3/4"	5/8"	1 5/8"	\$73.80
MT3960-254	10"	10 3/4"	3/4"	1 5/8"	\$92.30



Bauhaus Pull

ITEM	CTC	LENGTH	WIDTH	PROJ.	PRICE
MT0312-101	4"	4 5/8"	5/8"	1 5/8"	\$33.10
MT0312-152	6"	6 5/8"	5/8"	1 5/8"	\$45.10
MT0312-203	8"	8 5/8"	5/8"	1 5/8"	\$57.00
MT0312-254	10"	10 5/8"	5/8"	1 5/8"	\$65.80
MT0312-320	12 5/8"	13 1/4"	5/8"	1 5/8"	\$83.40



Wide Urban Pull

ITEM	CTC	LENGTH	WIDTH	PROJ.	PRICE
MT4520-102	4"	4 3/8"	3/4"	1 1/8"	\$31.30
MT4520-152	6"	6 1/4"	3/4"	1 1/8"	\$39.10
MT4520-203	8"	8 1/4"	3/4"	1 1/8"	\$47.80



Urban Pull

ITEM	CTC	LENGTH	WIDTH	PROJ.	PRICE
MT0337-096	3 3/4"	4 1/2"	3/8"	1 1/8"	\$32.60
MT0337-152	6"	6 3/4"	3/8"	1 1/8"	\$37.90
MT0337-203	8"	8 3/4"	3/8"	1 1/8"	\$43.50
MT0337-252	10"	10 3/4"	3/8"	1 1/8"	\$50.30
MT0337-320	12 5/8"	13 3/8"	3/8"	1 1/8"	\$65.80
MT0337-480	18 7/8"	19 5/8"	3/8"	1 1/8"	\$103.00

MT0337-480 has three legs with 9 7/16" CTC between legs



Oval Pull

ITEM	CTC	LENGTH	WIDTH	PROJ.	PRICE
MT7854-096	3 ¾"	5 ⅞"	⅜"	1 ⅛"	\$23.50
MT7854-152	6"	7 ⅞"	⅜"	1 ⅛"	\$28.10
MT7854-203	8"	9 ⅞"	⅜"	1 ⅛"	\$35.70



Wire Pull

ITEM	CTC	LENGTH	WIDTH	PROJ.	PRICE
MT2155-089	3 ½"	3 ¾"	⅝"	1 ¼"	\$13.00
MT2155-152	6"	6 ¼"	⅝"	1 ¼"	\$18.50



Gio Pull

ITEM	CTC	LENGTH	WIDTH	PROJ.	PRICE
MT3346-128	5 ⅙"	5 ½"	¼"	1 ¼"	\$36.60
MT3346-192	7 ⅙"	8"	¼"	1 ¼"	\$48.00
MT3346-256	10 ⅙"	10 ½"	¼"	1 ¼"	\$61.80





Sash Pull

ITEM	CTC	LENGTH	WIDTH	PROJ.	PRICE
MT1090-086	3 3/8"	4 1/8"	3/8"	1 1/8"	\$14.50
MT1090-132	5 3/16"	6 1/8"	3/8"	1 3/8"	\$20.10



Baron Pull

ITEM	CTC	LENGTH	WIDTH	PROJ.	PRICE
MT0313-102	4"	4 7/8"	1"	1 1/4"	\$32.00
MT0313-152	6"	6 7/8"	1"	1 1/4"	\$41.20
MT0313-203	8"	8 7/8"	1"	1 1/4"	\$50.30



Apollo Pull

ITEM	CTC	LENGTH	WIDTH	PROJ.	PRICE
MT0345-096	3 3/4"	4 1/2"	3/8"	1 3/8"	\$34.00
MT0345-152	6"	6 3/4"	3/8"	1 3/8"	\$42.90
MT0345-203	8"	8 3/4"	3/8"	1 3/8"	\$51.40
MT0345-254	10"	10 3/4"	3/8"	1 3/8"	\$61.50





Deco Pull

ITEM	CTC	LENGTH	WIDTH	PROJ.	PRICE
MT0334-096	3 ¾"	4 ½"	1"	1 ⅜"	\$38.60
MT0334-152	6"	6 ⅝"	1"	1 ⅜"	\$47.80
MT0334-203	8"	8 ⅝"	1"	1 ⅜"	\$57.00
MT0334-254	10"	10 ⅝"	1"	1 ⅜"	\$67.70



Durham Pull

ITEM	CTC	LENGTH	WIDTH	PROJ.	PRICE
MT7210-076	3"	3 ⅞"	⅝"	1 ¼"	\$21.30
MT7210-152	6"	6 ⅞"	¾"	1 ⅜"	\$32.40
MT7210-203	8"	9"	¾"	1 ⅜"	\$39.20



Bridge Pull

ITEM	CTC	LENGTH	WIDTH	PROJ.	PRICE
MT1800-089	3 ½"	3 ⅞"	½"	1 ¼"	\$23.50
MT1800-152	6"	6 ⅜"	½"	1 ¼"	\$32.40
MT1800-203	8"	8 ¼"	½"	1 ¼"	\$39.10

Bauhaus Round Pull

ITEM	CTC	LENGTH	WIDTH	PROJ.	PRICE
MT0319-102	4"	4 9/16"	1/2"	1 3/8"	\$32.50
MT0319-152	6"	6 9/16"	1/2"	1 3/8"	\$43.20
MT0319-254	10"	10 9/16"	1/2"	1 3/8"	\$62.00



Anvil Pull

ITEM	CTC	LENGTH	WIDTH	PROJ.	PRICE
MT2232-096	3 3/4"	4 3/8"	1"	1 3/8"	\$38.60
MT2232-152	6"	6 5/8"	1"	1 3/8"	\$46.30
MT2232-203	8"	8 5/8"	1"	1 3/8"	\$54.00



Hex Modern Pull

ITEM	CTC	LENGTH	WIDTH	PROJ.	PRICE
MT4422-102	4"	5 1/4"	1/2"	1 5/16"	\$39.90
MT4422-152	6"	7 1/4"	1/2"	1 5/16"	\$50.90
MT4422-203	8"	9 1/4"	1/2"	1 5/16"	\$61.50
MT4422-254	10"	11 1/4"	1/2"	1 5/16"	\$72.30





Huntington Pull

ITEM	CTC	LENGTH	WIDTH	PROJ.	PRICE
MT4670-102	4"	6 1/2"	7/16"	1 1/4"	\$29.30
MT4670-152	6"	8 1/2"	7/16"	1 1/4"	\$35.10
MT4670-203	8"	10 1/2"	7/16"	1 1/4"	\$43.50
MT4670-254	10"	12 1/2"	7/16"	1 1/4"	\$57.50



Angular Pull

ITEM	CTC	LENGTH	WIDTH	PROJ.	PRICE
MT3465-102	4"	4 3/8"	7/16"	1 1/4"	\$33.70
MT3465-152	6"	6 3/8"	7/16"	1 1/4"	\$43.00
MT3465-203	8"	8 3/8"	7/16"	1 1/4"	\$52.40
MT3465-254	10"	10 3/8"	1/2"	1 1/4"	\$61.50



Traditional Pull

ITEM	CTC	LENGTH	WIDTH	PROJ.	PRICE
MT0376-096	3 3/4"	5"	3/8"	1 1/4"	\$32.40
MT0376-152	6"	7 1/8"	3/8"	1 1/4"	\$37.60
MT0376-203	8"	9 1/8"	1/2"	1 1/4"	\$43.00
MT0376-254	10"	11 1/8"	1/2"	1 1/4"	\$57.30



Rhode Pull

ITEM	CTC	LENGTH	WIDTH	PROJ.	PRICE
MT4370-096	3 ¾"	4 ¾"	1"	1 ½"	\$50.90
MT4370-152	6"	7"	1"	1 ½"	\$62.10
MT4370-203	8"	9"	1"	1 ½"	\$73.20
MT4370-254	10"	11"	1"	1 ½"	\$92.40

Hudson Pull

ITEM	CTC	LENGTH	WIDTH	PROJ.	PRICE
MT4384-102	4"	4 ¾"	1 ½"	1 ¼"	\$38.60
MT4384-152	6"	6 ¾"	1 ¾"	1 ¼"	\$47.80
MT4384-203	8"	8 ¾"	1 ¾"	1 ¼"	\$57.00



Hex Profile Pull

ITEM	CTC	LENGTH	WIDTH	PROJ.	PRICE
MT4473-102	4"	4 9/16"	½"	1 5/16"	\$43.00
MT4473-152	6"	6 9/16"	½"	1 5/16"	\$57.00
MT4473-203	8"	8 9/16"	½"	1 5/16"	\$70.80
MT4473-254	10"	10 9/16"	½"	1 5/16"	\$84.70





Alexa Pull

ITEM	CTC	LENGTH	WIDTH	PROJ.	PRICE
MT3684-102	4"	5"	5/8"	1"	\$29.70
MT3684-152	6"	7 1/2"	5/8"	1"	\$36.60
MT3684-203	8"	9 1/2"	5/8"	1"	\$41.80



Asher Pull

ITEM	CTC	LENGTH	WIDTH	PROJ.	PRICE
MT2480-102	4"	5 1/8"	5/8"	1 3/8"	\$31.10
MT2480-152	6"	7 1/8"	5/8"	1 3/8"	\$43.20
MT2480-254	10"	11 1/8"	5/8"	1 3/8"	\$63.10



Avery Pull

ITEM	CTC	LENGTH	WIDTH	PROJ.	PRICE
MT3964-102	4"	4 3/4"	3/4"	1 1/8"	\$29.70
MT3964-152	6"	6 3/4"	3/4"	1 1/8"	\$36.60
MT3964-254	10"	10 3/4"	3/4"	1 1/8"	\$48.30

Hammered Bauhaus Pull

ITEM	CTC	LENGTH	WIDTH	PROJ.	PRICE
MK0312-102	4"	4 5/8"	5/8"	1 5/8"	\$71.90
MK0312-152	6"	6 5/8"	5/8"	1 5/8"	\$90.90
MK0312-254	10"	10 5/8"	5/8"	1 5/8"	\$124.00
MK0312-320	12 5/8"	13 1/4"	5/8"	1 5/8"	\$149.00



Partial Hammered Pull

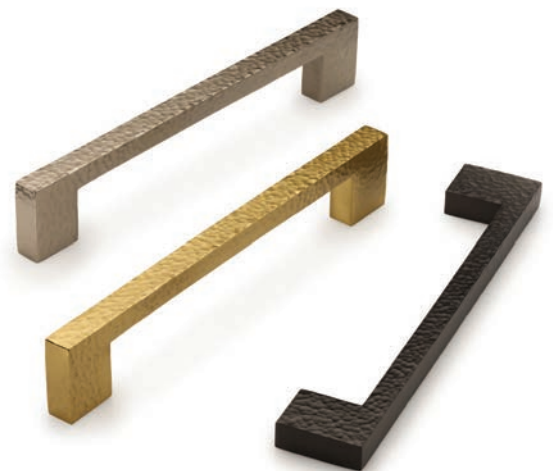
ITEM	CTC	LENGTH	WIDTH	PROJ.	PRICE
MK4461-102	4"	5"	7/16"	1 3/16"	\$60.60
MK4461-152	6"	7"	7/16"	1 3/16"	\$79.70
MK4461-254	10"	11"	7/16"	1 3/16"	\$113.00

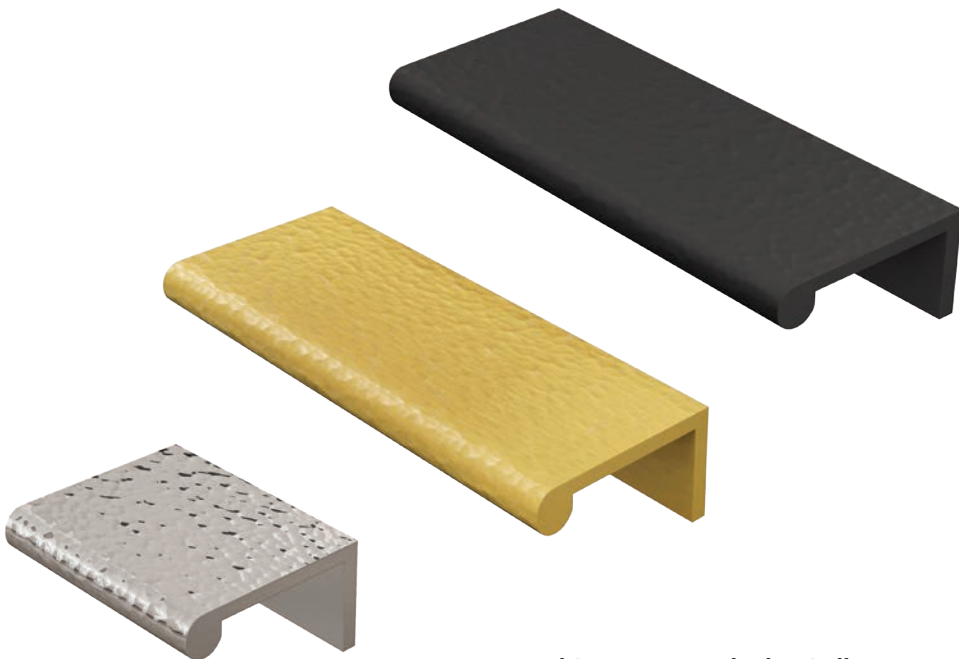


Hammered Urban Pull

ITEM	CTC	LENGTH	WIDTH	PROJ.	PRICE
MK0337-096	3 3/4"	4 1/2"	3/8"	1 1/8"	\$60.60
MK0337-152	6"	6 3/4"	3/8"	1 1/8"	\$79.70
MK0337-254	10"	10 3/4"	3/8"	1 1/8"	\$113.00
MK0337-320	12 5/8"	13 3/8"	3/8"	1 1/8"	\$137.00

Hammered Collection available in Polished Nickel (PNI), Satin Nickel (GSN), Satin Brass (MSB), Unlacquered Brass (ULB) and Flat Black (BLK).





Hammered Rear-Mounted Edge Pull

ITEM	NOM. LENGTH	EXACT LENGTH	THICKNESS	PROJ.	PRICE
MK8430-050	2"	50 mm	1/8"	1 1/16"	\$29.20
MK8430-100	4"	100 mm	1/8"	1 1/16"	\$58.40
MK8430-200	8"	200 mm	1/8"	1 1/16"	\$110.00

Hammered Collection available in Polished Nickel (PNI), Satin Nickel (GSN), Satin Brass (MSB), Unlacquered Brass (ULB) and Flat Black (BLK).

Top Mount Edge Pull 1/16"

ITEM	NOM. LENGTH	EXACT LENGTH	THICKNESS	PROJ.	PRICE
MT8210-050	2"	50 mm	1/16"	1 1/2"	\$11.40
MT8210-100	4"	100 mm	1/16"	1 1/2"	\$18.30
MT8210-200	8"	200 mm	1/16"	1 1/2"	\$29.70
MT8210-300	11 3/4"	300 mm	1/16"	1 1/2"	\$48.00



Top Mount Edge Pull 1/8"

ITEM	NOM. LENGTH	EXACT LENGTH	THICKNESS	PROJ.	PRICE
MT8230-050	2"	50 mm	1/8"	1 1/2"	\$12.60
MT8230-100	4"	100 mm	1/8"	1 1/2"	\$20.60
MT8230-200	8"	200 mm	1/8"	1 1/2"	\$36.60
MT8230-300	11 3/4"	300 mm	1/8"	1 1/2"	\$54.90



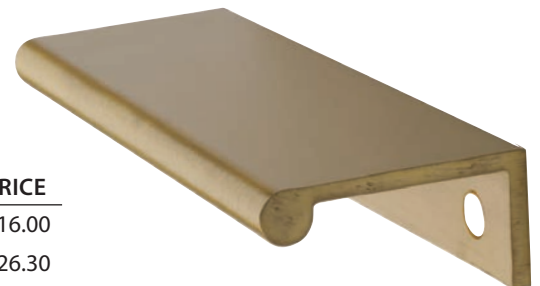
Rear Mount Edge Pull 1/16"

ITEM	NOM. LENGTH	EXACT LENGTH	THICKNESS	PROJ.	PRICE
MT8410-050	2"	50 mm	1/16"	1 9/16"	\$13.70
MT8410-100	4"	100 mm	1/16"	1 9/16"	\$20.60
MT8410-200	8"	200 mm	1/16"	1 9/16"	\$36.60
MT8410-300	11 3/4"	300 mm	1/16"	1 9/16"	\$54.90



Rear Mount Edge Pull 1/8"

ITEM	NOM. LENGTH	EXACT LENGTH	THICKNESS	PROJ.	PRICE
MT8430-050	2"	50 mm	1/8"	1 9/16"	\$16.00
MT8430-100	4"	100 mm	1/8"	1 9/16"	\$26.30
MT8430-200	8"	200 mm	1/8"	1 9/16"	\$54.90
MT8430-300	11 3/4"	300 mm	1/8"	1 9/16"	\$75.50



SOLID BRASS BATHROOM



Knurled Towel Bar

ITEM	BAR LENGTH	TOTAL LENGTH	PROJ.	PRICE
MT9430-B09	9"	10 5/8"	3 1/8"	\$209
MT9430-B18	18"	19 5/8"	3 1/8"	\$264
MT9430-B24	24"	25 5/8"	3 1/8"	\$297
MT9430-B30	30"	31 5/8"	3 1/8"	\$319



Knurled Towel Ring

ITEM	WIDTH	HEIGHT	PROJ.	PRICE
MT9430-TWR	8 1/2"	7 3/8"	2 1/2"	\$264



Knurled Tissue Holder

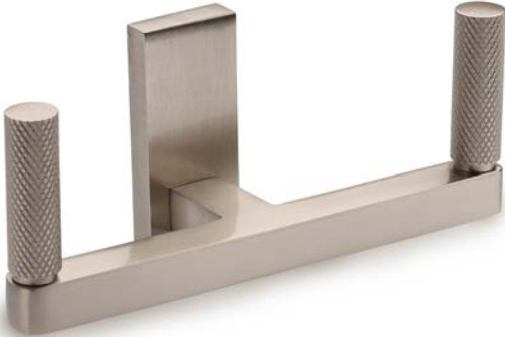
ITEM	LENGTH	HEIGHT	PROJ.	PRICE
MT9430-TPH	5 5/8"	1 1/4"	3 1/2"	\$176

Bath Accessories Finishes:

Satin Nickel (GSN), Polished Chrome (PCH), Polished Nickel (PNI), Satin Brass (MSB), Unlacquered Brass (ULB) and Flat Black (BLK)



SOLID BRASS HOOKS



Double Knurled Hook

ITEM	WIDTH	HEIGHT	PROJ.	PRICE
MT8425-002	5 ¼"	2 ¼"	1 ⅝"	\$82.00



Single Knurled Hook

ITEM	WIDTH	HEIGHT	PROJ.	PRICE
MT8425-001	1"	2 ¼"	1 ⅝"	\$48.00



Robe Hook

ITEM	WIDTH	HEIGHT	PROJ.	PRICE
MT8435-001	1"	2 ¼"	1 ⅜"	\$33.00

SOLID BRASS SHELVES

8" Curved Shelf Bracket

ITEM	WIDTH	HEIGHT	PROJ.	PRICE
MT0514-203	¾"	9 ½"	7 ⅝"	\$132.00

Sold individually



SOLID BRASS APPLIANCE PULLS



V1317 Hammered Bauhaus Appliance Pull

CTC	LENGTH	THRU BOLT		SURFACE MOUNT ¹		BACK TO BACK PAIR ²	
12"	13"	V1317 12-TB	\$388	V1317 12-SM	\$433	V1317 12-BTB	\$821
18"	19 1/8"	V1317 18-TB	\$513	V1317 18-SM	\$558	V1317 18-BTB	\$1,071

(1) Suitable only for solid wood doors with minimum thickness of 1 1/4"
 (2) Maximum door thickness for Back-to-Back fixing: 3"
 All items have a projection of 2 3/8"
 All items have a diameter of 1"





V1312 Bauhaus Appliance Pull

CTC	LENGTH	THRU BOLT		SURFACE MOUNT ¹		BACK TO BACK PAIR ²	
12"	12"	V1312 12-TB	\$276	V1312 12-SM	\$321	V1312 12-BTB	\$597
18"	18"	V1312 18-TB	\$366	V1312 18-SM	\$411	V1312 18-BTB	\$777
24"	25"	V1312 24-TB	\$526	V1312 24-SM	\$571	V1312 24-BTB	\$1,097

(1) Suitable only for solid wood doors with minimum thickness of 1 ¼"

(2) Maximum door thickness for Back-to-Back fixing: 3"

All items have a projection of 2 ¾"

All items have a diameter of 1"



V1315 Bauhaus Knurled Appliance Pull

CTC	LENGTH	THRU BOLT		SURFACE MOUNT ¹		BACK TO BACK PAIR ²	
12"	13"	V1315 12-TB	\$388	V1315 12-SM	\$433	V1315 12-BTB	\$821
18"	19"	V1315 18-TB	\$513	V1315 18-SM	\$558	V1315 18-BTB	\$1,071

(1) Suitable only for solid wood doors with minimum thickness of 1 ¼"

(2) Maximum door thickness for Back-to-Back fixing: 3"

All items have a projection of 2 ¾"

All items have a diameter of 1"



V1465 Knurled Appliance Pull

CTC	LENGTH	THRU BOLT		SURFACE MOUNT ¹		BACK TO BACK PAIR ²	
12"	12"	V1465 12-TB	\$388	V1465 12-SM	\$433	V1465 12-BTB	\$821
17"	18"	V1465 18-TB	\$513	V1465 18-SM	\$558	V1465 18-BTB	\$1,071

A (1) Suitable only for solid wood doors with minimum thickness of 1 ¼"

(2) Maximum door thickness for Back-to-Back fixing: 3"

|| items have a projection of 2 ½"

All items have a diameter of 1"





V1960 Adria Appliance Pull

CTC	LENGTH	THRU BOLT		SURFACE MOUNT ¹		BACK TO BACK PAIR ²	
12"	12"	V1960 12-TB	\$276	V1960 12-SM	\$321	V1960 12-BTB	\$597
17"	18"	V1960 18-TB	\$366	V1960 18-SM	\$411	V1960 18-BTB	\$777

(1) Suitable only for solid wood doors with minimum thickness of 1 ¼"

(2) Maximum door thickness for Back-to-Back fixing: 3"

All items have a diameter of 1 ½"

All items have a projection of 2 ½"



V1314 Baron Appliance Pull

CTC	LENGTH	THRU BOLT	
12"	12"	V1314 12-TB	\$276
17"	18"	V1314 18-TB	\$366

All items have a projection of 2 ½"

All items have a handle of 1" x ¾"

Back to Back and Surface Mount not available



V1447 Lucerne Reeded Appliance Pull

CTC	LENGTH	THRU BOLT		SURFACE MOUNT ¹		BACK TO BACK PAIR ²	
12"	13 1/8"	V1447 12-TB	\$388	V1447 12-SM	\$433	V1447 12-BTB	\$821
18"	19"	V1447 18-TB	\$513	V1447 18-SM	\$558	V1447 18-BTB	\$1,071

(1) Suitable only for solid wood doors with minimum thickness of 1 1/4"

(2) Maximum door thickness for Back-to-Back fixing: 3"

All items have a projection of 2 1/4"

All items have a width of 3/8"



V1238 Gio Appliance Pull

CTC	LENGTH	THRU BOLT		SURFACE MOUNT ¹		BACK TO BACK PAIR ²	
12"	13 1/8"	V1238 12-TB	\$276	V1238 12-SM	\$321	V1238 12-BTB	\$597
18"	19"	V1238 18-TB	\$366	V1238 18-SM	\$411	V1238 18-BTB	\$777

(1) Suitable only for solid wood doors with minimum thickness of 1 1/4"

(2) Maximum door thickness for Back-to-Back fixing: 3"

All items have a projection of 2 1/4"

All items have a width of 3/8"



V1450 Apollo Appliance Pull

CTC	LENGTH	THRU BOLT		SURFACE MOUNT ¹		BACK TO BACK PAIR ²	
11"	12 ¼"	V1450 12-TB	\$276	V1450 12-SM	\$321	V1450 12-BTB	\$597
17"	18 ¼"	V1450 18-TB	\$366	V1450 18-SM	\$411	V1450 18-BTB	\$777

(1) Suitable only for solid wood doors with minimum thickness of 1 ¼"

(2) Maximum door thickness for Back-to-Back fixing: 3"

All items have a projection of 2 ¼"

All items have a handle of 1" x ½"



V1210 Durham Appliance Pull

CTC	LENGTH	THRU BOLT		SURFACE MOUNT ¹		BACK TO BACK PAIR ²	
12"	13 ⅝"	V1210 12-TB	\$276	V1210 12-SM	\$321	V1210 12-BTB	\$597
18"	19 ⅝"	V1210 18-TB	\$366	V1210 18-SM	\$411	V1210 18-BTB	\$777

(1) Suitable only for solid wood doors with minimum thickness of 1 ¼"

(2) Maximum door thickness for Back-to-Back fixing: 3"

All items have a projection of 1 ¾"

All items have a width of ⅞"



V1361 Bar Appliance Pull

CTC	LENGTH	THRU BOLT		SURFACE MOUNT ¹		BACK TO BACK PAIR ²	
8"	12"	V1361 12-TB	\$276	V1361 12-SM	\$321	V1361 12-BTB	\$597
14"	18"	V1361 18-TB	\$366	V1361 18-SM	\$411	V1361 18-BTB	\$777

(1) Suitable only for solid wood doors with minimum thickness of 1 ¼"

(2) Maximum door thickness for Back-to-Back fixing: 3"

All items have a projection of 2 ⅜"

All items have a diameter of 1"



V1365 Bar Knurled Appliance Pull

CTC	LENGTH	THRU BOLT		SURFACE MOUNT ¹		BACK TO BACK PAIR ²	
8"	12"	V1365 12-TB	\$388	V1365 12-SM	\$433	V1365 12-BTB	\$821
14"	18"	V1365 18-TB	\$513	V1365 18-SM	\$558	V1365 18-BTB	\$1,071

(1) Suitable only for solid wood doors with minimum thickness of 1 ¼"

(2) Maximum door thickness for Back-to-Back fixing: 3"

All items have a projection of 2 ⅜"

All items have a diameter of 1"



V1334 Deco Appliance Pull

CTC	LENGTH	THRU BOLT		SURFACE MOUNT ¹		BACK TO BACK PAIR ²	
11"	12"	V1334 12-TB	\$276	V1334 12-SM	\$321	V1334 12-BTB	\$597
17"	18"	V1334 18-TB	\$366	V1334 18-SM	\$411	V1334 18-BTB	\$777

(1) Suitable only for solid wood doors with minimum thickness of 1 ¼"

(2) Maximum door thickness for Back-to-Back fixing: 3"

All items have a projection of 2"

All items have a width of 1 ¼"



V1232 Anvil Appliance Pull

CTC	LENGTH	THRU BOLT		SURFACE MOUNT ¹		BACK TO BACK PAIR ²	
12"	12 7/8"	V1232 12-TB	\$276	V1232 12-SM	\$321	V1232 12-BTB	\$597
18"	18 7/8"	V1232 18-TB	\$366	V1232 18-SM	\$411	V1232 18-BTB	\$777

(1) Suitable only for solid wood doors with minimum thickness of 1 ¼"

(2) Maximum door thickness for Back-to-Back fixing: 3"

All items have a projection of 1 7/8"

All items have a width of 1"



V1964 Avery Appliance Pull

CTC	LENGTH	THRU BOLT		SURFACE MOUNT ¹		BACK TO BACK PAIR ²	
12"	13 ¼"	V1964 12-TB	\$276	V1964 12-SM	\$321	V1964 12-BTB	\$597
18"	19 ¼"	V1964 18-TB	\$366	V1964 18-SM	\$411	V1964 18-BTB	\$777

(1) Suitable only for solid wood doors with minimum thickness of 1 ¼"

(2) Maximum door thickness for Back-to-Back fixing: 3"

All items have a projection of 1 ⅞"

All items have a width of 1 ¼"



V2485 Asher Appliance Pull

CTC	LENGTH	THRU BOLT	
12"	13 ⅞"	V2485 12-TB	\$276
18"	19 ⅞"	V2485 18-TB	\$366

Back to back and surface mount fixing not available

All items have a projection of 2 ¼"

All items have a width of ¾"



V1473 Hex Profile Appliance Pull

CTC	LENGTH	THRU BOLT		SURFACE MOUNT ¹		BACK TO BACK PAIR ²	
12"	12 7/8"	V1473 12-TB	\$388	V1473 12-SM	\$433	V1473 12-BTB	\$821
18"	18 7/8"	V1473 18-TB	\$513	V1473 18-SM	\$558	V1473 18-BTB	\$1,071
24"	24 7/8"	V1473 24-TB	\$708	V1473 24-SM	\$753	V1473 24-BTB	\$1,461

(1) Suitable only for solid wood doors with minimum thickness of 1 1/4"

(2) Maximum door thickness for Back-to-Back fixing: 3"

All items have a projection of 2 1/4"

All items have a width of 3/4"



V1376 Traditional Appliance Pull

CTC	LENGTH	THRU BOLT	
11"	13"	V1376 12-TB	\$276
17"	19"	V1376 18-TB	\$366

Back to back and surface mount fixing not available

All items have a projection of 2 1/2"

All items have a diameter of 1"



V1390 Urban Appliance Pull

CTC	LENGTH	THRU BOLT		SURFACE MOUNT ¹		BACK TO BACK PAIR ²	
11"	12"	V1390 12-TB	\$276	V1390 12-SM	\$321	V1390 12-BTB	\$597
17"	18"	V1390 18-TB	\$366	V1390 18-SM	\$411	V1390 18-BTB	\$777
24"	25"	V1390 24-TB	\$526	V1390 24-SM	\$571	V1390 24-BTB	\$1,097

(1) Suitable only for solid wood doors with minimum thickness of 1 ¼"

(2) Maximum door thickness for Back-to-Back fixing: 3"

All items have a projection of 2 ⅝"

All items have a handle of 1" x ¾"



V1395 Hammered Urban Appliance Pull

CTC	LENGTH	THRU BOLT		SURFACE MOUNT ¹		BACK TO BACK PAIR ²	
11"	12"	V1395 12-TB	\$388	V1395 12-SM	\$433	V1395 12-BTB	\$821
17"	18"	V1395 18-TB	\$513	V1395 18-SM	\$558	V1395 18-BTB	\$1,071
24"	25"	V1395 24-TB	\$708	V1395 24-SM	\$753	V1395 24-BTB	\$1,461

(1) Suitable only for solid wood doors with minimum thickness of 1 ¼"

(2) Maximum door thickness for Back-to-Back fixing: 3"

All items have a projection of 2 ⅝"

All items have a handle of 1" x ¾"



URBAN

Modern yet timeless, the Urban Collection embodies a quiet sophistication. Every detail is thoughtfully considered—from the clean silhouettes to the refined finishes—resulting in hardware that feels both purposeful and elevated. Combining reliable functionality with exceptional craftsmanship, the collection lends a polished, contemporary edge to any interior.



Polished Chrome
PCR



Satin Nickel
MSN



Satin Brass
SBP

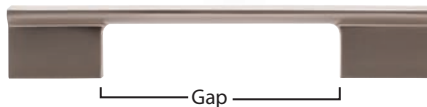


Matte Black
FBN



Bridge Pull

ITEM	CTC	LENGTH	WIDTH	GAP	PROJ.	PRICE
MC2866-096	3 3/4"	4 3/8"	5/8"	2 3/4"	1"	\$24.80
MC2866-160	6 5/16"	7 1/8"	5/8"	4"	1"	\$34.50
MC2866-320	12 5/8"	13 3/8"	5/8"	4"	1"	\$80.10



Leaf Pull

ITEM	CTC	LENGTH	WIDTH	PROJ.	PRICE
MC2796-032	1 1/4"	1 3/4"	5/8"	1 1/8"	\$20.80
MC2796-096	3 3/4"	4 3/8"	7/8"	1 1/8"	\$36.20
MC2796-160	6 5/16"	6 7/8"	7/8"	1 1/8"	\$53.20
MC2796-320	12 5/8"	13 1/8"	7/8"	1 1/8"	\$99.10



Wave Pull

ITEM	CTC	LENGTH	BASE	PROJ.	PRICE
MC2852-096	3 3/4"	5 3/8"	5/16"	1 1/8"	\$31.00
MC2852-160	6 5/16"	7 7/8"	5/16"	1 1/8"	\$42.80
MC2852-320	12 5/8"	14 1/8"	5/16"	1 1/8"	\$85.30





Dorset Pull

ITEM	CTC	LENGTH	WIDTH	PROJ.	PRICE
MC2619-160	6 5/16"	6 3/4"	1/2"	1 3/8"	\$20.90



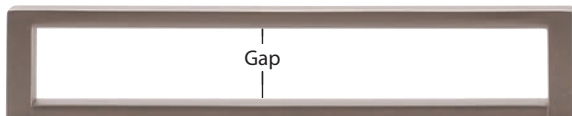
Troy Pull

ITEM	CTC	LENGTH	WIDTH	PROJ.	PRICE
MC2625-096	3 3/4"	4 3/8"	1/2"	1 1/4"	\$14.40
MC2625-160	6 5/16"	6 7/8"	1/2"	1 1/4"	\$20.90



Box Pull

ITEM	CTC	LENGTH	WIDTH	GAP	PROJ.	PRICE
MC2780-096	3 3/4"	4 1/8"	5/8"	7/8"	1 1/4"	\$31.00
MC2780-160	6 5/16"	6 5/8"	5/8"	7/8"	1 1/4"	\$42.80
MC2780-320	12 5/8"	12 7/8"	5/8"	7/8"	1 1/4"	\$76.20





Franklin Pull

ITEM	CTC	LENGTH	WIDTH	PROJ.	PRICE
MC2617-128	5 1/16"	5 3/4"	5/8"	1 3/8"	\$19.70
MC2617-160	6 5/16"	6 7/8"	5/8"	1 3/8"	\$23.60
MC2617-256	10 1/16"	10 3/4"	5/8"	1 3/8"	\$43.20





Leaf Knob

ITEM	CTC	LENGTH	WIDTH	PROJ.	PRICE
MC2796-032	1 ¼"	1 ¾"	5/8"	1 ½"	\$20.80

Available in all four finishes



Stroud Knob

ITEM	CTC	LENGTH	THICKNESS	PROJ.	PRICE
MC1265-032	1 ¼"	2"	3/8"	1 ¼"	\$20.80

Available in all four finishes



Maldon Knob

ITEM	LENGTH	PROJ.	PRICE
MC1254-033	1 ¼"	1 ½"	\$20.90
MC1254-040	1 5/8"	1 ½"	\$23.80

Available in all four finishes



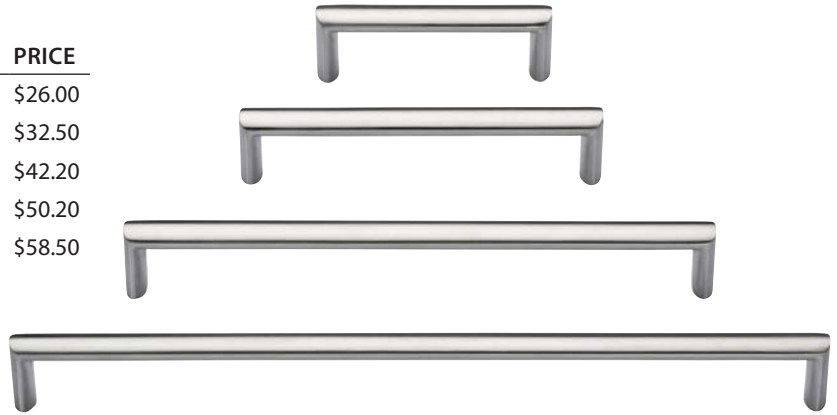
Smithfield Pull

ITEM	CTC	LENGTH	PRICE
MC7108-096-SST	3 ¾"	4 ⅛"	\$26.00
MC7108-152-SST	6"	6 ⅜"	\$32.50
MC7108-254-SST	10"	10 ⅜"	\$42.20
MC7108-356-SST	14"	14 ⅜"	\$50.20
MC7108-457-SST	18"	18 ⅜"	\$58.50

Available in SATIN STAINLESS ONLY

Projection: 1 ¼"

Width: ¾"



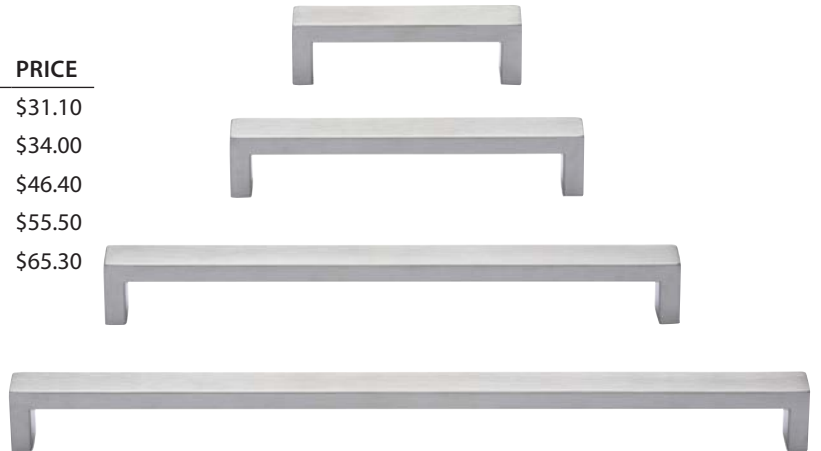
Bexley Pull

ITEM	CTC	LENGTH	PRICE
MC7114-096-SST	3 ¾"	4 ⅜"	\$31.10
MC7114-152-SST	6"	6 ⅝"	\$34.00
MC7114-254-SST	10"	10 ⅝"	\$46.40
MC7114-356-SST	14"	14 ⅝"	\$55.50
MC7114-457-SST	18"	18 ⅝"	\$65.30

Available in SATIN STAINLESS ONLY

Projection: 1 ¼"

Width: ¾"



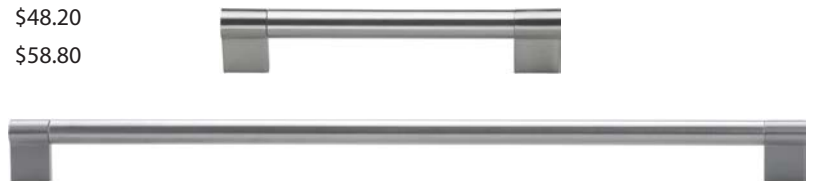
Harrow Pull

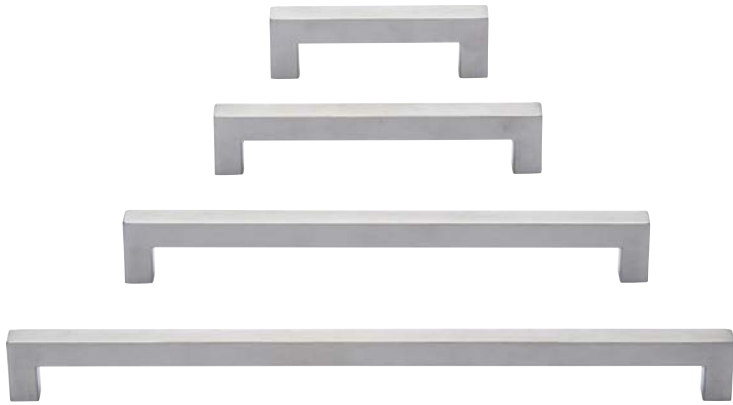
ITEM	CTC	LENGTH	PRICE
MC2090-096-SST	3 ¾"	4 ¾"	\$30.20
MC2090-160-SST	6 ⅝"	7 ⅝"	\$37.50
MC2090-240-SST	9 ⅞"	10 ⅝"	\$42.90
MC2090-320-SST	12 ⅝"	13 ⅝"	\$48.20
MC2090-480-SST	18 ⅞"	19 ⅞"	\$58.80

Available in SATIN STAINLESS ONLY

Projection: 1 ½"

Diameter: ⅝"





Sutton Pull

ITEM	CTC	LENGTH	PRICE
MC7109-096-SST	3 ¾"	4 ¾"	\$28.10
MC7109-152-SST	6"	6 ⅝"	\$30.80
MC7109-254-SST	10"	10 ⅝"	\$42.90
MC7109-356-SST	14"	14 ⅝"	\$51.80
MC7109-457-SST	18"	18 ⅝"	\$61.50

Available in SATIN STAINLESS ONLY

Projection: 1 ⅜"

Diameter: ⅝"



Waterford Pull

ITEM	CTC	LENGTH	PRICE
MC7102-096-SST	3 ¾"	6 ⅞"	\$14.60
MC7102-152-SST	6"	8 ⅜"	\$17.80
MC7102-254-SST	10"	12 ⅜"	\$23.60
MC7102-356-SST	14"	16 ⅜"	\$26.80
MC7102-457-SST	18"	20 ⅜"	\$31.60

Available in SATIN STAINLESS ONLY

Projection: 1 ¼"

Diameter: ½"



Hatfield Pull

ITEM	CTC	LENGTH	PRICE
MC7103-096-SST	3 ¾"	4 ¼"	\$18.60
MC7103-152-SST	6"	6 ½"	\$24.70
MC7103-254-SST	10"	10 ½"	\$30.80
MC7103-356-SST	14"	14 ½"	\$41.30
MC7103-457-SST	18"	18 ½"	\$48.60

Available in SATIN STAINLESS ONLY

Projection: 1 ¼"

Diameter: ½"



NORDIC COLLECTION

Manzoni's Nordic Collection embodies enduring design and precise craftsmanship. With a balance of visual sophistication and inviting touch, these pieces draw on industrial inspiration to bring an understated yet luxurious presence to interiors.



Oslo Pull

ITEM	CTC	LENGTH	DIA.	PROJ.	PRICE
MA5570-050	Knob	2"	3/4"	1 1/2"	\$17.40
MA5570-160	6 5/16"	9 7/8"	3/4"	1 1/2"	\$37.20
MA5570-320	12 5/8"	16 1/8"	3/4"	1 1/2"	\$48.00

Stocked Finishes:



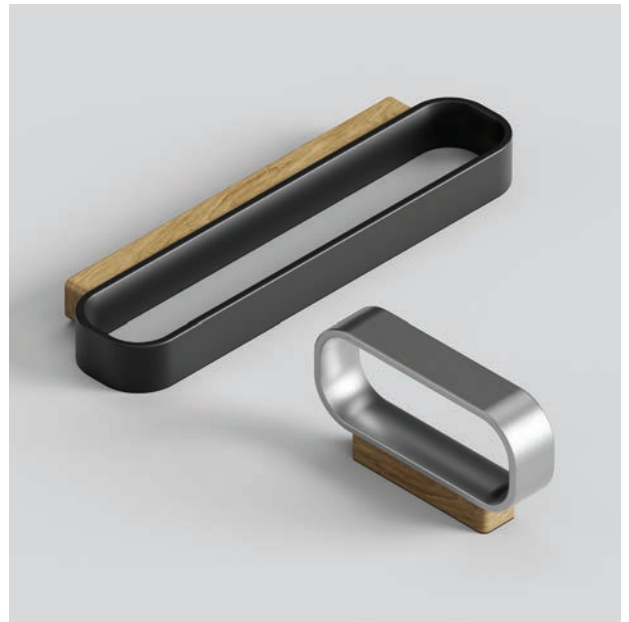
Fine Brushed Brass with Antique Brown legs
FBS



Gun Metal with Matte Black legs
FGM

Stockholm

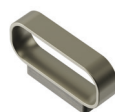
ITEM	CTC	LENGTH	WIDTH	PROJ.	PRICE
MA5571-032	1 ¼"	2 ½"	½"	1 ⅜"	\$27.50
MA5571-096	3 ¾"	5"	½"	1 ⅜"	\$33.20



Stocked Finishes:



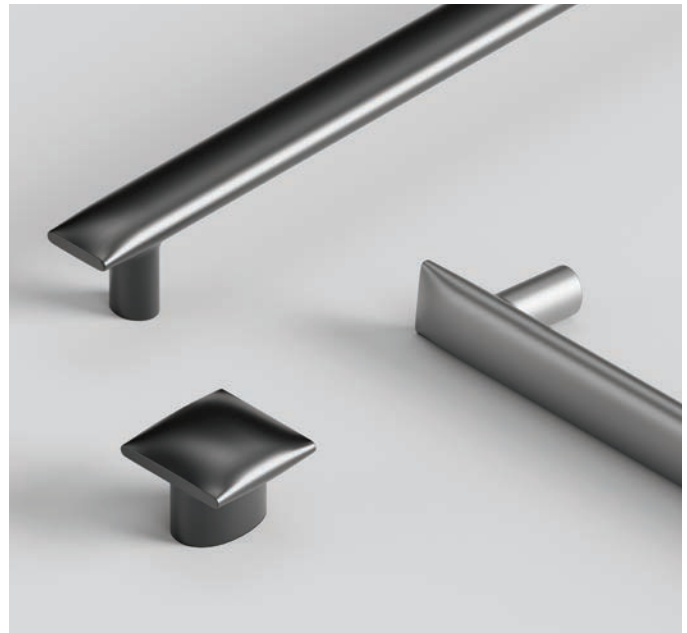
**Inox Look
FIL**



**Brushed Brass
FBB**



**Matte Black
FBK**



Bergen

ITEM	CTC	LENGTH	WIDTH	PROJ.	PRICE
MA5573-016	5/8"	1 1/8"	1 1/8"	1"	\$12.60
MA5573-160	6 5/16"	7 3/4"	3/4"	1 1/4"	\$27.50
MA5573-320	12 5/8"	14"	3/4"	1 1/4"	\$45.80

Stocked Finishes:



**Inox Look
FIL**



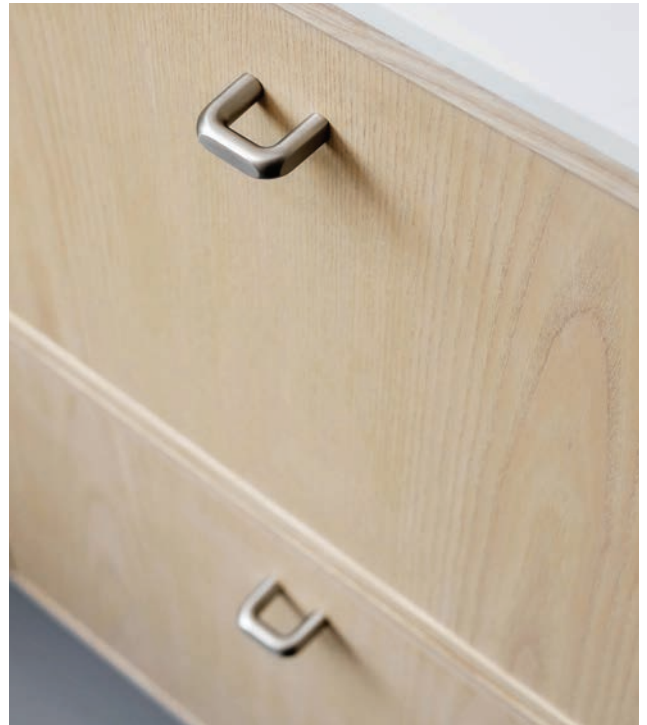
**Brushed Brass
FBB**



**Gun Metal
FGM**

Malmo

ITEM	CTC	LENGTH	WIDTH	PROJ.	PRICE
MA5545-032	1 ¼"	1 ⅝"	½"	1 ⅜"	\$11.40
MA5545-160	6 ⅝"	6 ¾"	½"	1 ⅜"	\$19.40
MA5545-320	12 ⅝"	13"	½"	1 ⅜"	\$32.00



Stocked Finishes:



Inox Look
FIL



Gun Metal
FGM



Matte Black
FBK



Tromso

ITEM	CTC	WIDTH	HEIGHT	PROJ.	PRICE
MA5554-032	1 1/4"	1 5/8"	3 3/8"	3/4"	\$19.00
MA5554-064	2 1/2"	3 3/8"	1 5/8"	3/4"	\$20.80
MA5554-160	6 5/16"	7 7/8"	1 5/8"	3/4"	\$32.40

Stocked Finishes:



Brushed Brass
FBB



Matte Black
FBK



Dalby

ITEM	CTC	LENGTH	HEIGHT	PROJ.	PRICE
MA4592-032	1 1/4"	2"	7/8"	1 1/8"	\$13.70
MA4592-160	6 5/16"	7 7/8"	7/8"	1 1/8"	\$22.90

Helsinki

ITEM	CTC	LENGTH	WIDTH	PROJ.	PRICE
MA4593-032	1 1/4"	6 1/8"	5/8"	3/4"	\$22.40
MA4593-096	3 3/4"	8 5/8"	5/8"	3/4"	\$27.50
MA4593-160	6 5/16"	11 1/8"	5/8"	3/4"	\$33.50



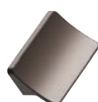
Freya

ITEM	CTC	LENGTH	THICKNESS	HEIGHT	PRICE
MA4594-050	1 1/4"	2"	1/16"	3/4"	\$11.60
MA4594-200	6 5/16"	7 7/8"	1/16"	3/4"	\$19.60

Stocked Finishes:



Matte Brass
FBR



Matte Bronze
FMB



Matte Black
FBK

CLASSICAL

Elegant and timeless reproduction of period pieces. The finishes in our Classical Range reproduce the elegant shades and tones from traditional European designs.



**Distressed Pewter
DPW**



**Distressed Brass
DBS**



**Lacquered Bronze
LBN**

Floral Round Knob

ITEM	DIA.	PROJ.	PRICE
MB4479-030	1 1/8"	7/8"	\$14.40
MB4479-035	1 3/8"	1"	\$19.00



Classic Round Knob

ITEM	DIA.	PROJ.	PRICE
MB4226-030	1 1/8"	1"	\$14.20
MB4226-035	1 3/8"	1 1/8"	\$19.00



Domed Round Knob

ITEM	DIA.	PROJ.	PRICE
MB4408-030	1 1/8"	1"	\$13.70
MB4408-035	1 3/8"	1 1/8"	\$16.70



Luca Knob

ITEM	SIZE	PROJ.	PRICE
MB4090-045	1 5/8" x 3/4"	1"	\$13.20





Terre Knob

ITEM	DIA.	PROJ.	PRICE
MB4231-032	1 1/4"	1 1/8"	\$19.00



Beaded Round Knob

ITEM	DIA.	PROJ.	PRICE
MB4404-035	1 3/8"	1 1/8"	\$15.80



Decorated Round Knob

ITEM	DIA.	PROJ.	PRICE
MB4401-035	1 3/8"	1 1/8"	\$15.80



Egg Knob

ITEM	SIZE	PROJ.	PRICE
MB4462-040	1 5/8" x 1 1/8"	1 3/8"	\$22.20

Swan Drop Knob

ITEM	CTC	SIZE	PRICE
MB3019-096	3 3/4"	4 1/2" x 1 7/8"	\$33.40

Knob features a ceramic insert



Dome Knob

ITEM	DIA.	PROJ.	PRICE
MB4316-035	1 3/8"	1 1/8"	\$23.50
MB4316-040	1 5/8"	1 1/4"	\$26.40

Knob features a ceramic insert



Ornate Drop Knob

ITEM	CTC	SIZE	PRICE
MB3085-096	3 3/4"	4 7/8" x 2"	\$36.20





Classic Drop Knob

ITEM	CTC	SIZE	PRICE
MB1396-053	¾"	2 ½"	\$17.60



Floral Ring Pull

ITEM	DIA.	PRICE
MB2224-047	1 ⅞"	\$26.70
MB2224-055	2 ⅛"	\$30.80



Classic Ring Pull

ITEM	SIZE	PRICE
MB2212-050	2"	\$19.20



Classic Round Drop Knob

ITEM	DIA.	PRICE
MB9213-042	1 ⅝"	\$14.60

Faux Screw Bin Pull

ITEM	CTC	SIZE	PROJ.	PRICE
MB5120-064	2 1/2"	3 3/4" x 1 1/2"	3/4"	\$18.00



Classic Cup Pull

ITEM	CTC	SIZE	PROJ.	PRICE
MB5332-032	1 1/4"	3 7/8" x 1 3/8"	3/4"	\$19.00



Paxton Pull

ITEM	CTC	LENGTH	WIDTH	PROJ.	PRICE
MB5191-160	6 5/16"	6 5/8"	1/2"	1 1/4"	\$42.80
MB5191-320	12 5/8"	12 7/8"	1/2"	1 1/4"	\$75.30



Stilo Pull

ITEM	CTC	LENGTH	WIDTH	PROJ.	PRICE
MB5217-096	3 3/4"	4 5/8"	3/4"	1 1/8"	\$29.30
MB5217-160	6 5/16"	7 1/8"	3/4"	1 1/8"	\$39.20
MB5217-320	12 5/8"	13 1/2"	3/4"	1 1/8"	\$75.50



Luca Pull

ITEM	CTC	LENGTH	WIDTH	PROJ.	PRICE
MB5090-096	3 3/4"	5 5/8"	13/16"	1 1/8"	\$21.00
MB5090-128	5 1/16"	7"	7/8"	1 1/8"	\$29.10



Terre Pull

ITEM	CTC	LENGTH	WIDTH	PROJ.	PRICE
MB5231-160	6 5/16"	6 7/8"	1"	1 1/2"	\$60.10



Jena Pull

ITEM	CTC	LENGTH	WIDTH	PROJ.	PRICE
MB5210-096	3 3/4"	4 1/8"	5/8"	1 1/8"	\$42.20
MB5210-160	6 5/16"	6 5/8"	5/8"	1 1/8"	\$50.00
MB5210-320	12 5/8"	12 7/8"	5/8"	1 1/8"	\$86.10



Mission Pull

ITEM	CTC	LENGTH	WIDTH	PROJ.	PRICE
MB5190-160	6 5/16"	6 3/4"	3/8"	1 1/4"	\$43.50
MB5190-320	12 5/8"	13"	3/8"	1 1/4"	\$74.50



Classic Pull

ITEM	CTC	LENGTH	WIDTH	PROJ.	PRICE
MB5341-096	3 3/4"	5 1/8"	13/16"	1"	\$30.10
MB5341-128	5 1/6"	6 3/8"	13/16"	1"	\$35.50



MYSTIC

With designs that celebrate classic lines and offer timeless grace, our Mystic Cabinet Hardware is offered in three distinct finishes.



**Vintage Nickel
VGN**



**Antique Florence
AFL**



**Vintage Black Iron
VBI**

Distressed Knob

ITEM	DIA.	PROJ.	PRICE
MG0761-000	1 ¼"	1 ⅛"	\$20.50



Avenue Knob

ITEM	SIZE	PROJ.	PRICE
MG0832-000	1 ½" x 1 ⅛"	1"	\$19.00



Dot Knob

ITEM	DIA.	PROJ.	PRICE
MG0785-000	⅝"	1 ⅛"	\$19.00



Parisian Knob

ITEM	DIA.	PROJ.	PRICE
MG0826-000	1 ⅛"	1"	\$19.00



Oval Capri Knob

ITEM	SIZE	PROJ.	PRICE
MG0799-000	1 ⅛" x 1 ⅝"	1 ⅛"	\$18.80





Avenue Bin Knob

ITEM	CTC	LENGTH	WIDTH	PROJ.	PRICE
MG0832-064	2 1/2"	4"	1 1/2"	7/8"	\$29.10



Distressed Bar Pull

ITEM	CTC	LENGTH	DIA.	PROJ.	PRICE
MG0761-096	3 3/4"	4 1/2"	1/2"	1 1/4"	\$37.90
MG0761-128	5 1/6"	5 3/4"	1/2"	1 1/4"	\$43.00
MG0761-192	7 9/16"	8 1/4"	1/2"	1 1/4"	\$60.30



Pipe Pull

ITEM	CTC	LENGTH	DIA.	PROJ.	PRICE
MG0785-096	3 3/4"	4 3/8"	5/8"	1 1/8"	\$36.60
MG0785-160	6 5/16"	6 7/8"	5/8"	1 1/8"	\$46.90



Parisian Pull

ITEM	CTC	LENGTH	FOOT WIDTH	PROJ.	PRICE
MG0826-128	5 1/16"	6"	1"	1 3/8"	\$38.70
MG0826-160	6 5/16"	7 1/4"	1"	1 3/8"	\$47.70
MG0826-320	12 5/8"	13 5/8"	1"	1 3/8"	\$77.10



Fold Pull

ITEM	CTC	LENGTH	WIDTH	PROJ.	PRICE
MG0787-096	3 3/4"	4 3/8"	3/4"	1"	\$30.20
MG0787-128	5 1/16"	5 5/8"	3/4"	1"	\$33.40
MG0787-192	7 9/16"	8 1/8"	3/4"	1"	\$46.30
MG0787-320	12 5/8"	13 1/8"	3/4"	1"	\$68.40



Banded Pull

ITEM	CTC	LENGTH	WIDTH	PROJ.	PRICE
MG0770-096	3 3/4"	4 3/4"	7/8"	7/8"	\$29.10
MG0770-160	6 5/16"	7 1/4"	7/8"	7/8"	\$37.10
MG0770-320	12 5/8"	13 1/2"	7/8"	7/8"	\$75.00

DESIGNER WOOD

The Manzoni Designer Wood range presents a refined collection of modern and contemporary designs, crafted in Walnut, Oak, and Black Stained Ash. Each piece is defined by clean, elegant lines, enriched by the natural character of the wood's grain and tone—bringing a fresh, versatile aesthetic to both classic and contemporary interiors.

Made from authentic timbers, every item carries its own subtle variations in color and grain, underscoring its individuality. A protective lacquer finish enhances durability while preserving the wood's natural beauty.



Oak
OKL



Walnut
WNL



Black
ABK

Urban Pull

ITEM	CTC	LENGTH	PRICE
MN0337-160	6 ⁵ / ₁₆ "	7 ¹ / ₄ "	\$31.30
MN0337-224	8 ¹³ / ₁₆ "	9 ³ / ₄ "	\$35.70
MN0337-288	11 ⁵ / ₁₆ "	12 ¹ / ₄ "	\$42.70

Projection: 1 ¹/₄"

Width: ¹/₂"

Available in Walnut, Oak, and Black Stained Ash.



Cape Pull

ITEM	CTC	LENGTH	WIDTH	PROJ.	PRICE
MN6778-032	1 ¹ / ₄ "	3 ¹ / ₈ "	1"	1"	\$27.90
MN6778-160	6 ⁵ / ₁₆ "	9 ¹ / ₂ "	1"	1"	\$46.40
MN6778-224	8 ¹³ / ₁₆ "	13 ¹ / ₂ "	1 ¹ / ₈ "	1 ¹ / ₈ "	\$57.20
MN6778-320	12 ⁵ / ₈ "	18 ¹ / ₄ "	1 ¹ / ₄ "	1 ¹ / ₄ "	\$90.60

Available in Walnut, Oak, and Black Stained Ash.



Modern Pull

ITEM	CTC	LENGTH	PRICE
MN7792-160	6 ⁵ / ₁₆ "	8 ⁵ / ₈ "	\$39.10
MN7792-224	8 ¹³ / ₁₆ "	11 ¹ / ₄ "	\$47.10
MN7792-320	12 ⁵ / ₈ "	15 ³ / ₄ "	\$56.40

Projection: 1 ³/₈"

Width: 1 ³/₈"

Available in Walnut, Oak, and Black Stained Ash.





Arc Pull

ITEM	CTC	LENGTH	PRICE
MN7730-224	8 13/16"	10 5/8"	\$71.70
MN7730-320	12 5/8"	15 1/4"	\$103.00

Projection: 1 5/8"

Width: 1 3/8"

Available in Walnut, Oak, and Black Stained Ash.



Bar Pull

ITEM	CTC	LENGTH	PRICE
MN7623-192	7 9/16"	8 1/4"	\$67.70

Projection: 1 5/8"

Width: 5/8"

Available in Walnut, Oak, and Black Stained Ash.



Slim Bar Pull

ITEM	CTC	LENGTH	PRICE
MN7763-160	6 5/16"	8 5/8"	\$45.50
MN7763-224	8 13/16"	11 1/8"	\$52.40
MN7763-320	12 5/8"	14 7/8"	\$62.10

Projection: 1 1/2"

Width: 1/2"

Available in Walnut, Oak, and Black Stained Ash.

Ridged Pull

ITEM	CTC	LENGTH	WIDTH	PROJ.	PRICE
MN6800-032	1 ¼"	2 ⅝"	1"	¾"	\$25.40
MN6800-160	6 ⅝"	9 ¾"	1 ⅛"	1"	\$50.20

Available in Walnut and Oak.



Groove Pull

ITEM	CTC	LENGTH	PRICE
MN7150-160	6 ⅝"	6 ⅞"	\$36.40
MN7150-224	8 ⅜"	9 ½"	\$48.60

Projection: 1 ⅛"

Width: 1 ½"

Available in Walnut and Oak and Black Stained Ash.



Strap Pull

ITEM	CTC	LENGTH	PRICE
MN6711-192	7 ⅞"	13 ⅝"	\$53.30

Projection: 1"

Width: 1 ⅛"

Available in Walnut, Oak and Black Stained Ash.





Organic Pull

ITEM	CTC	LENGTH	PRICE
MN7160-160	6 5/16"	7 5/8"	\$38.60
MN7160-224	8 13/16"	10 1/8"	\$47.10

Projection: 1 5/8"
Width: 5/8"

Available in Walnut and Oak.



Wave Pull

ITEM	CTC	HANDING	LENGTH	PRICE
MN681L-128	5 1/16"	Left Handed	10"	\$52.40
MN681R-128	5 1/16"	Right Handed	10"	\$52.40

Projection: 1 5/8"
Width: 5/8"

Available in Walnut, Oak and Black Stained Ash.



Cupar Pull

ITEM	CTC	LENGTH	WIDTH	PROJ.	PRICE
MN6904-128	5 1/16"	7"	5/8"	1 1/8"	\$41.80
MN6904-224	8 13/16"	10 3/4"	5/8"	1 1/8"	\$59.70

Available in Walnut and Oak.

Ascot Pull

ITEM	CTC	LENGTH	PRICE
MN7827-128	5 1/16"	5 5/8"	\$44.50
MN7827-224	8 13/16"	9 1/2"	\$68.60

Projection: 1 3/4"
Width: 5/8"
Available in Walnut and Oak.



Dunbar Pull

ITEM	CTC	LENGTH	PRICE
MN6870-192	7 9/16"	11 5/8"	\$57.20
MN6870-256	10 1/16"	15 1/2"	\$66.60

Projection: 1 3/8"
Width: 1/2"
Available in Walnut and Oak.



Eton Pull

ITEM	CTC	LENGTH	PRICE
MN7863-128	5 1/16"	5 5/8"	\$34.70
MN7863-192	7 9/16"	8 3/4"	\$44.70
MN7863-256	10 1/16"	10 3/4"	\$61.40

Projection: 1 3/8"
Width: 5/8"
Available in Walnut, Oak, and Black Stained Ash.



Straight Angled Pull

ITEM	CTC	LENGTH	PRICE
MN6770-160	6 5/16"	7 7/8"	\$54.90

Projection: 1 1/8"
Width: 1 1/2"
Available in Walnut and Oak.





Wick Knob

ITEM	METAL FINISH	PRICE
MN4370-026	Satin Brass	\$45.60
MN4372-026	Satin Nickel	\$45.60

Projection: 1"
Width: 1"
Available in Walnut and Oak.



Elgin Knob

ITEM	DIA.	PROJ.	PRICE
MN4470-033	1 ¼"	1 ½"	\$25.60

Available in Walnut, Oak, and Black Stained Ash.



Scone Knob

ITEM	DIA.	PROJ.	PRICE
MN4491-038	1 ½"	7/8"	\$27.10

Available in Walnut and Oak.

Angled Knob

ITEM	CTC	LENGTH	WIDTH	PROJ.	PRICE
MN4403-016	5/8"	2 1/8"	1 7/8"	1 1/2"	\$27.00

Available in Walnut and Oak.



Wing Knob

ITEM	CTC	LENGTH	WIDTH	PROJ.	PRICE
MN6765-032	1 1/4"	2 1/2"	2 3/8"	7/8"	\$38.60

Available in Walnut, Oak, and Black Stained Ash.



Round Concave Knob

ITEM	DIA.	PROJ.	PRICE
MN4328-065	2 1/2"	3/4"	\$32.60

Available in Walnut, Oak, and Black Stained Ash.



Axle Knob

ITEM	DIA.	PROJ.	PRICE
MN4415-056	2 1/4"	1 1/8"	\$25.40

Available in Walnut, Oak, and Black Stained Ash.





Rectangular Knob

ITEM	CTC	LENGTH	WIDTH	PROJ.	PRICE
MN4431-016	5/8"	2"	1 3/8"	1"	\$25.40
Available in Walnut, Oak, and Black Stained Ash.					
MN4431-032	1 1/4"	2 7/8"	2"	1"	\$27.00
Available in Walnut and Oak					



Square Knob

ITEM	CTC	LENGTH	WIDTH	PROJ.	PRICE
MN4428-035	5/8"	1 3/8"	1 3/8"	1"	\$34.80
MN4428-050	1 1/4"	2"	2"	1"	\$37.60
Available in Walnut and Oak.					



Square Convex Knob

ITEM	CTC	LENGTH	WIDTH	PROJ.	PRICE
MN4323-032	1 1/4"	2 3/4"	2 3/4"	7/8"	\$28.50
Available in Walnut and Oak.					



PRODUCT USE AND CARE

All of our products are designed for interior use only. Products should be cleaned only with a soft cloth dampened with clean water, and wiped dry with a cloth. Water residue should not be left on the product as chemicals or minerals contained within may damage the protective coating and attack the finish. No cleaners, whether chemical or organic should be used to clean the products as they may attack the finish and void the warranty.

WARRANTY

BRAND	RANGE & FINISHES	MECHANICAL WARRANTY	INTERIOR FINISH WARRANTY
Ashley Norton	Solid Bronze – BZ, NB, WL, WM	10 years	No warranty (living finish)
Ashley Norton	Solid Bronze - TC	10 years	10 years
Ashley Norton	Solid Brass – DOR, PNI, ULB	10 years	No warranty (living finish)
Ashley Norton	Solid Brass – GSN, PCH, MSB, BLK	10 years	10 years
Manzoni	Urban – MSN, PCR, FBN, SBP	3 years	3 years
Manzoni	Stainless Steel – SST	3 years	3 years
Manzoni	Wood – WNL, OKL, ABK	3 years	3 years
Manzoni	Classical - DPW, DBS, LBN	3 years	3 years
Manzoni	Mystic - AFL, VGN, VBI	3 years	3 years
Manzoni	Nordic - All seven finishes	3 years	3 years

Ashley Norton and Manzoni extend warranties as indicated above to the original residential purchaser, providing the product has been installed indoors, in strict accordance with our installation instructions. Items in a 'living finish' (see below) have no Finish Warranty.

The only obligation of Ashley Norton or Manzoni will be to repair, replace or refund the defective product or parts upon presentation, together with proof of purchase dated within the warranty period. We assume no liability for any labor charges regarding the removal or reinstallation of the products; nor will we cover any freight, postage, or handling expense related to the product. This warranty does not cover damage caused by accident, misuse, abuse, tampering, extreme climatic conditions, improper installation or products used in commercial applications. In no event shall Ashley Norton or Manzoni be liable for any incidental or consequential damages arising from the sale or use of our products.

Some of the finishes and patinas shown in this brochure are 'living finishes'. These finishes may highlight, oxidize or rub off in places due to frequency of use; therefore such events do not constitute a defect. Thus, Ashley Norton cannot guarantee these finishes and we will not have any obligation to repair or replace such finishes under this warranty. The living finishes in this brochure are:

Solid Bronze: Dark Bronze (BZ), Natural Bronze (NB), White Medium (WM) and White Bronze (WL) Solid Brass: Oil Rubbed Bronze (DOR), Polished Nickel (PNI) and Unlacquered Brass (ULB)



210 West Parkway Suite 1
Pompton Plains, NJ 07444
United States
Tel: (973) 557 4551
ashleynorton.com

Printed in United States