

THERMASOL[®]

The Original Wellness Company



Rich in History

For over six decades, Thermasol has been the pioneer in wellness solutions and technology, setting the benchmark for innovation and excellence.

Our commitment to quality and wellness-driven design has made us the trusted choice for homeowners, designers, and hospitality professionals.

With a legacy of craftsmanship and cutting-edge engineering, Thermasol continues to push the boundaries, transforming everyday spaces into immersive wellness experiences.

Each product is built to deliver reliability, comfort, and an unparalleled sense of relaxation.

HARVIA

In 2024, Thermasol joined the Harvia family—home to global wellness brands including EOS and Almost Heaven Saunas—combining American innovation with Finnish craftsmanship. Together, we offer fully customizable steam, sauna, and spa solutions that elevate daily rituals and redefine modern luxury.



Wellness is not a trend; it's a way of living.
It is a lifelong pursuit of balance, intention,
and presence.

At Thermasol, we nurture this journey by
crafting spaces and experiences that feel
intuitive, restorative, and deeply personal.

Because true wellness begins when design,
ritual, and innovation work in harmony.

Cultural Significance

Global Roots of Thermal Wellness

For thousands of years, cultures around the world have embraced heat-based rituals to promote healing, connection, and renewal.

These rituals were more than hygiene, they were social, spiritual, and therapeutic practices that supported community and longevity.

Today, the tradition lives on, elevated by technology, as people seek reconnection with themselves and their environment.

Modern steam and sauna experiences are an extension of this timeless wellness philosophy, bringing ancient healing into everyday life.

CALDARIUM

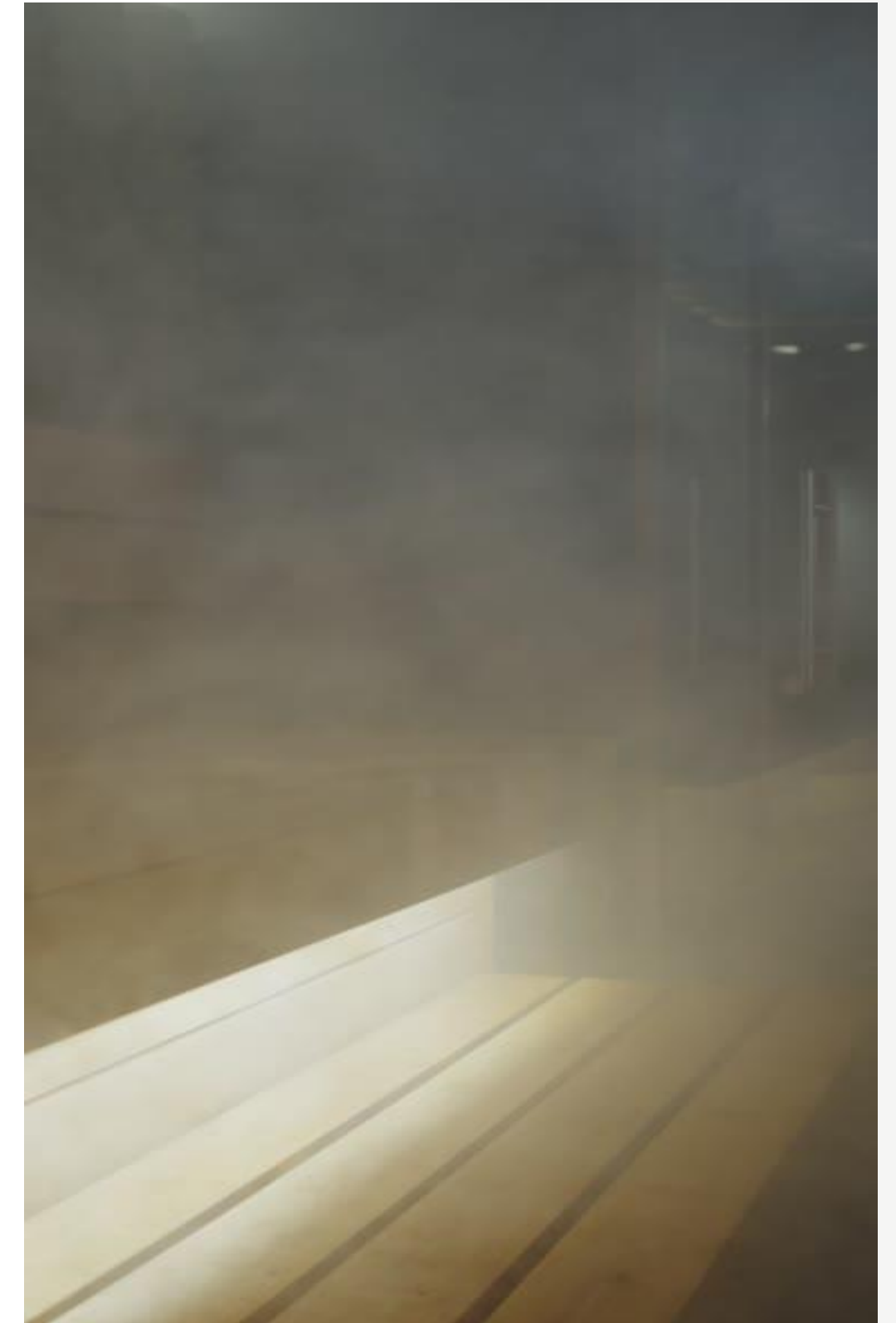
TEPIDARIUM

NATATIO

FRIGIDARIUM

LACONICUM

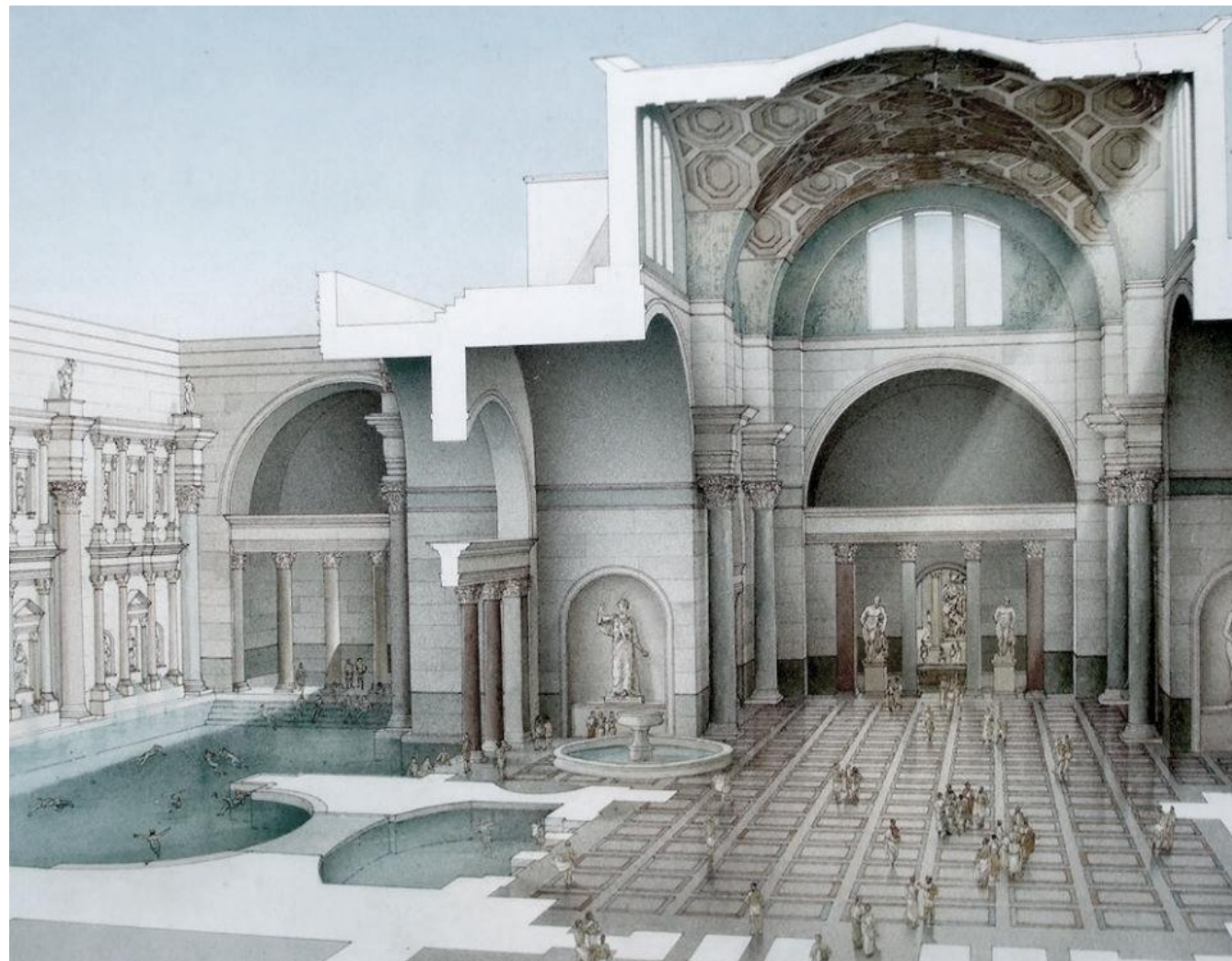
PALAESTRA



Baths of Caracalla

Ancient Roots of Communal Wellness

Built in 3rd-century Rome, the Baths of Caracalla were more than a place to bathe, they fostered communal wellness through shared spaces, through caldariums and frigidariums, to harbor relaxation, socializing, and rejuvenation. This Roman tradition of collective self-care echoes in today's spas, gyms and wellness clubs where community remains central to the wellness experience.



Raja-Jooseppi

Preserving Finland's Ancient Sauna Tradition

Located in remote Lapland, the Raja-Jooseppi smoke sauna (savusauna) is a rare preserved example of Finland's oldest sauna form. Heated by wood-fired stones in a chimney-less room, it embodies centuries of Finnish communal bathing; simple, restorative, and deeply cultural. This rustic tradition lives on in modern wellness as a symbol of natural heat therapy and shared ritual.



Dogo Onsen

Japan's Living Bathing Legacy

Located in Shikoku, Dogo Onsen is one of Japan's oldest and most revered hot springs, with over 1,000 years of history. Rooted in Shinto and Buddhist traditions, onsen bathing reflects Japan's emphasis on purification, seasonal rhythms, and quiet relaxation; a timeless ritual still central to Japanese wellness today.



Teotihuacan

Mesoamerican Temazcal Sweat Rituals

Ancient dome-shaped sweat lodges used by Aztec, Mayan, and other Mesoamerican cultures for the ritual purification, healing, and spiritual renewal. Teotihuacan, near Mexico City is believed to have served priests and warriors preparing for sacred ceremonies near the Palace of Jaguars. Heated with volcanic stones and infused with herbs, the tradition continues today as a powerful symbol of cleansing and rebirth in indigenous practices.



The Power of Ritual

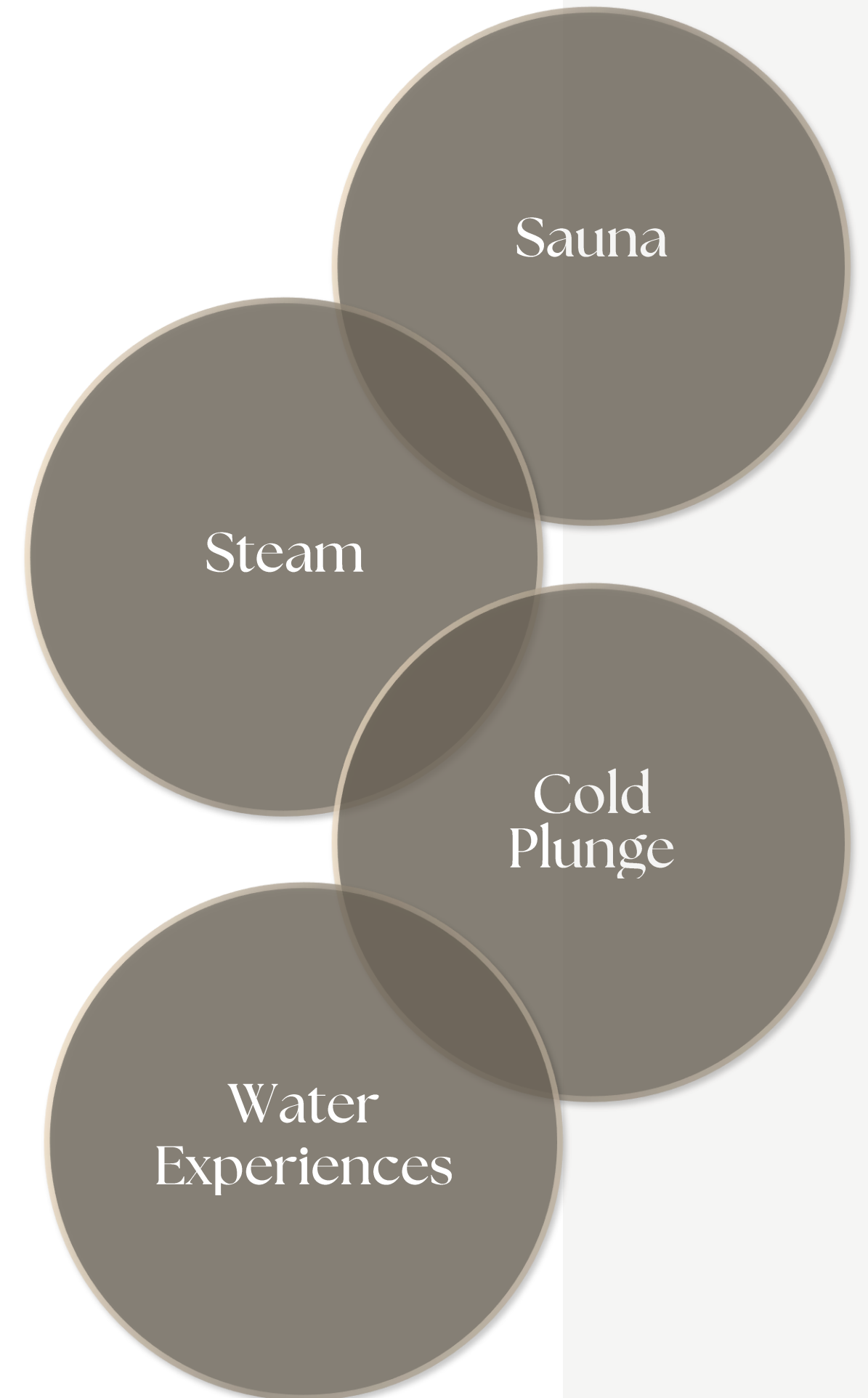
True wellness is achieved through intentional rituals that restore balance in both body and mind. These rituals combine:

Thermal Wellness – The use of steam and sauna activates circulation, aids detoxification, relaxes muscles, and promotes deep physical release.

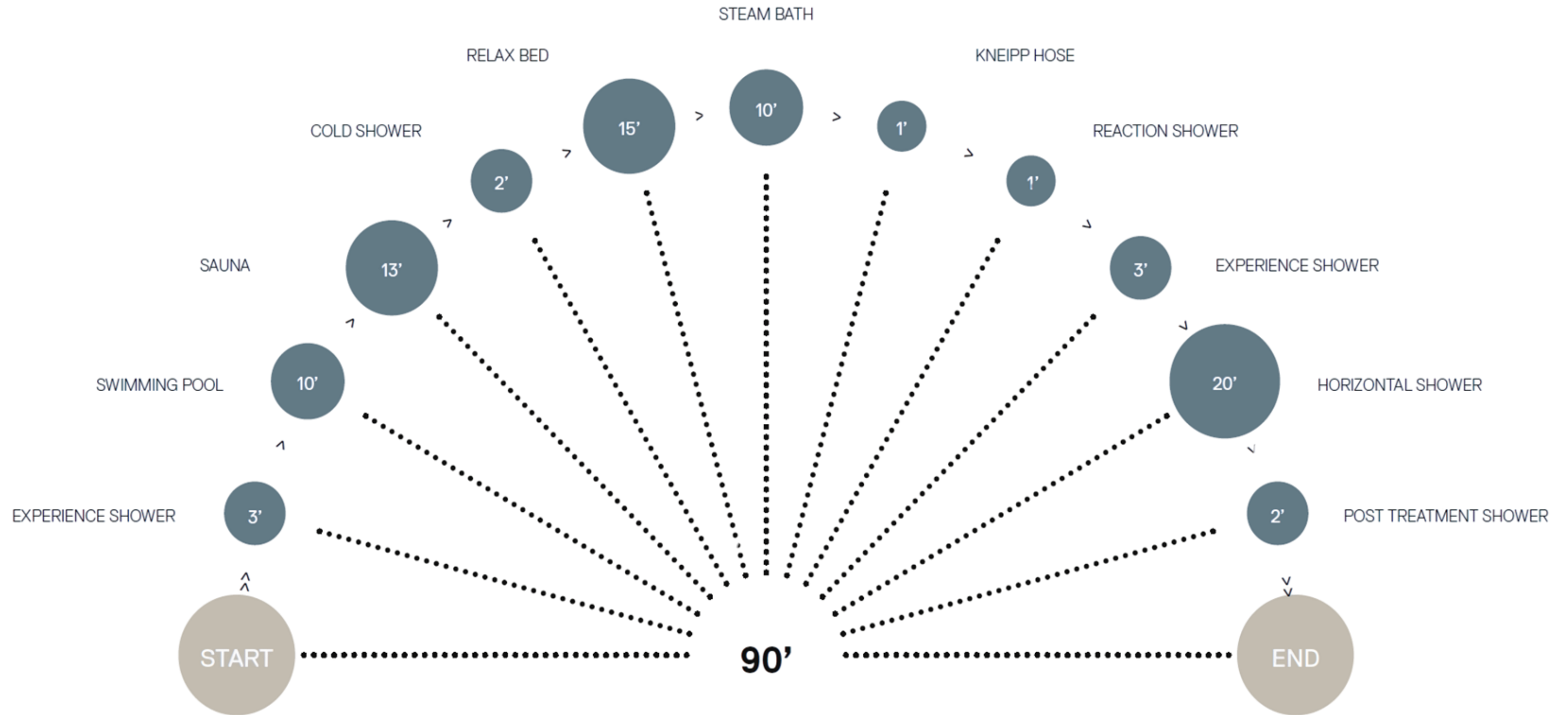
Cold Immersion – Contrasting heat with cold therapy stimulates the nervous system, strengthens immunity, and enhances mental clarity through vascular and metabolic conditioning.

Sensory Hydrotherapy – A multisensory experience of light, sound, and temperature shifts designed to awaken the senses, ground the body, and elevate mood through neurostimulation.

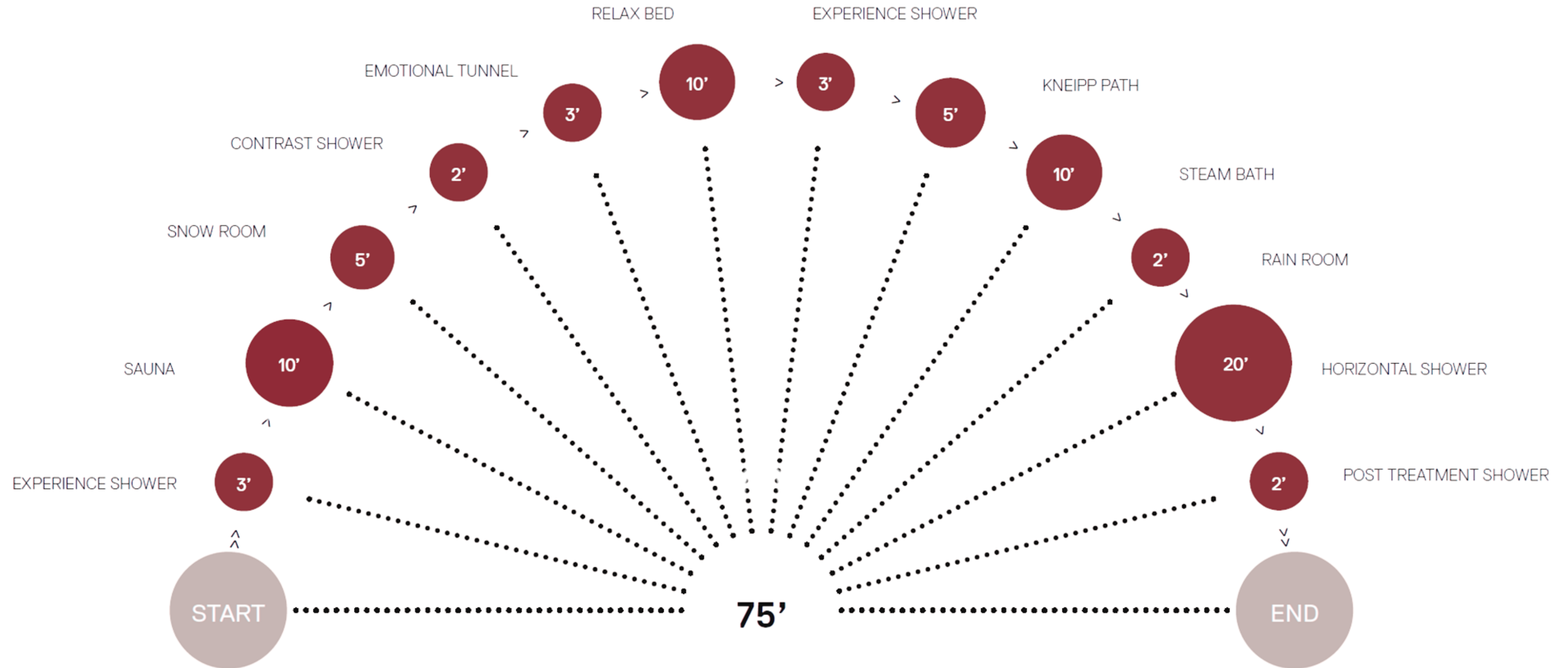
Together, these practices regulate the body's stress response, improve recovery, and create a state of physiological harmony, a foundation for daily well-being.



Ritual for Relaxation



Ritual for Energizing



Economic Monitor: A \$6.3 Trillion Opportunity

North America Leads the Way

- \$2.16T wellness market (largest globally)
- 137% recovery over pre-pandemic levels
- Highest per capita spend: \$5,768

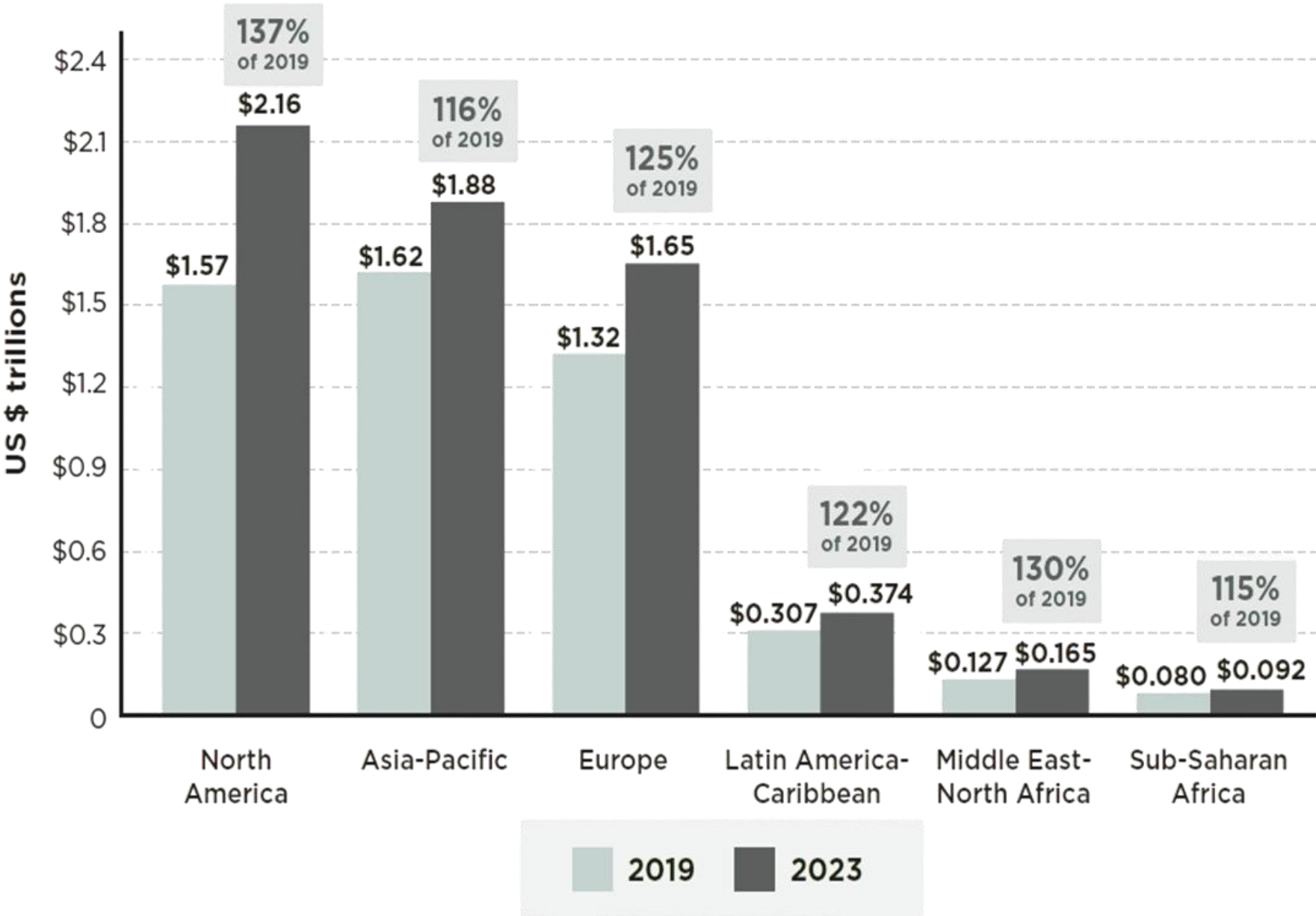
What This Means for Thermasol

- Wellness is no longer a luxury; it's essential
- Strong demand for steam, sauna, and contrast therapy solutions
- Consumers seek smart, design-driven, and holistic wellness rituals

Continued Growth

- The global wellness economy hit \$6.3T in 2023, projected to reach \$9T by 2028.
- Growing at 7.3% annually – faster than global GDP

Size and Recovery of the Wellness Economy by Region
2019 Versus 2023



Source: Global Wellness Economy Monitor 2024

The image shows the interior of a modern wooden sauna. The walls, ceiling, and benches are made of dark-stained wood. A large glass wall on the right side provides a view of an outdoor garden with a lawn, a hedge, and a modern house in the background. In the foreground, there is a black stone heater with the brand name 'HARPPA' visible. The word 'SAUNAS' is written in white, serif capital letters across the center of the image.

SAUNAS

Thermal Wellness & Its Impact

20 - 30 %

150° - 194° F

Sauna

- Improves circulation by increasing heart rate and vascular flow
- Relieves muscle soreness and supports post-workout recovery
- Flushes toxins through deep, dry heat-induced sweating
- Supports cardiovascular health with regular use linked to lower blood pressure
- Promotes mental clarity and stress reduction via endorphin release

● Humidity
● Temperature

90° - 120° F

90 - 100 %

Steam

- Clears sinuses and airways for improved respiratory function
- Hydrates skin and opens pores for a detoxifying glow
- Reduces joint stiffness and supports arthritis relief with moist heat
- Improves circulation and stimulates the lymphatic system
- Eases stress and tension with enveloping warmth and relaxation

Sauna Variations & Benefits

	Intensity	Application	Benefits
Bio Sauna	Mild, dry heat with some humidity	Soft sauna combining light humidity + lower temps; ideal for longer sessions	Skin cleansing, relaxation, accessible for heat-sensitive users
Herbal Sauna	Moist heat with infused herbs	Traditional sauna with aromatherapy; uses steam or diffusers infused with herbs (eucalyptus, chamomile, etc.)	Respiratory relief, deep relaxation, immunity boost
Infrared Treatment	Radiant heat	Heats the body directly using infrared light waves to penetrate soft tissue; lower ambient temperature of 100-140 degrees	Targeted muscle recovery, pain relief
Red Light Therapy	Non-thermal light therapy	Uses low-level red or near-infrared light (LLLT) on the skin	Skin health, cellular repair, reduces inflammation
Halotherapy	Dry or passive treatment	Salt therapy through inhalation of micronized particles in a controlled environment	Clears airways, supports asthma/allergies, skin calming

Interior Sauna Offering



3 Striking Collections

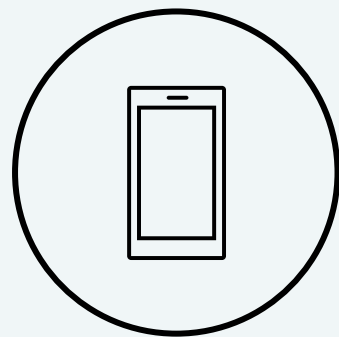
- Multiple size and configurations
- Nordic-design inspired
- Engineered through quality European craftsmanship
- Premium material combinations
- Wi-Fi-enabled controls; remote operation through MyHarvia App
- Integrated full spectrum LED lighting with separate control
- Each sauna is a turnkey solution: cabin, heater, stones, & controls
- Assembled and installed on site by client
- All cabins include thermal/vapor barrier construction

Notables

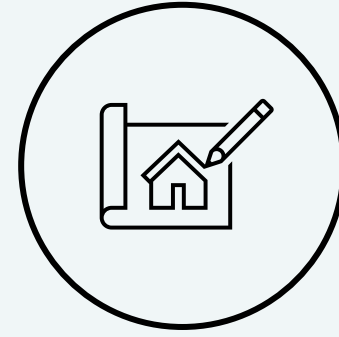
- Lead times – 4-6 weeks from accepted order
- Freight – Quoted per project, by delivery address
- Shipping – Flat packed & drop shipped to client's address
- Forklift or pallet jack required on site to relocate the sauna from delivery truck to point of installation (*client is responsible for coordinating a forklift/pallet jack service provider*)



Turnkey



Smart
Control



Design



Quality



Lumaria

Sculptural, Light-Filled, Seamless

Lumaria blends light, warmth, and design into a refined indoor sauna experience. Inspired by “Lumina” (light) and “Aria” (melody), it brings openness and balance to any interior space. Designed for 2–5 people, Lumaria offers a modern, corner-friendly layout with a panoramic glass front, combining natural materials and customizable lighting to create an inviting wellness retreat.



Astra

Bold, Comfort, Tranquility

Astra offers a refined indoor sauna experience where minimalism meets tranquility. Designed for 3–4 people, Astra blends glass, wood, and light to create a serene, spacious environment. Its corner layout, brushed Tyrol wood interiors, and customizable LED lighting deliver timeless style and personal comfort, making it a perfect fit for modern home wellness spaces.



Aalto

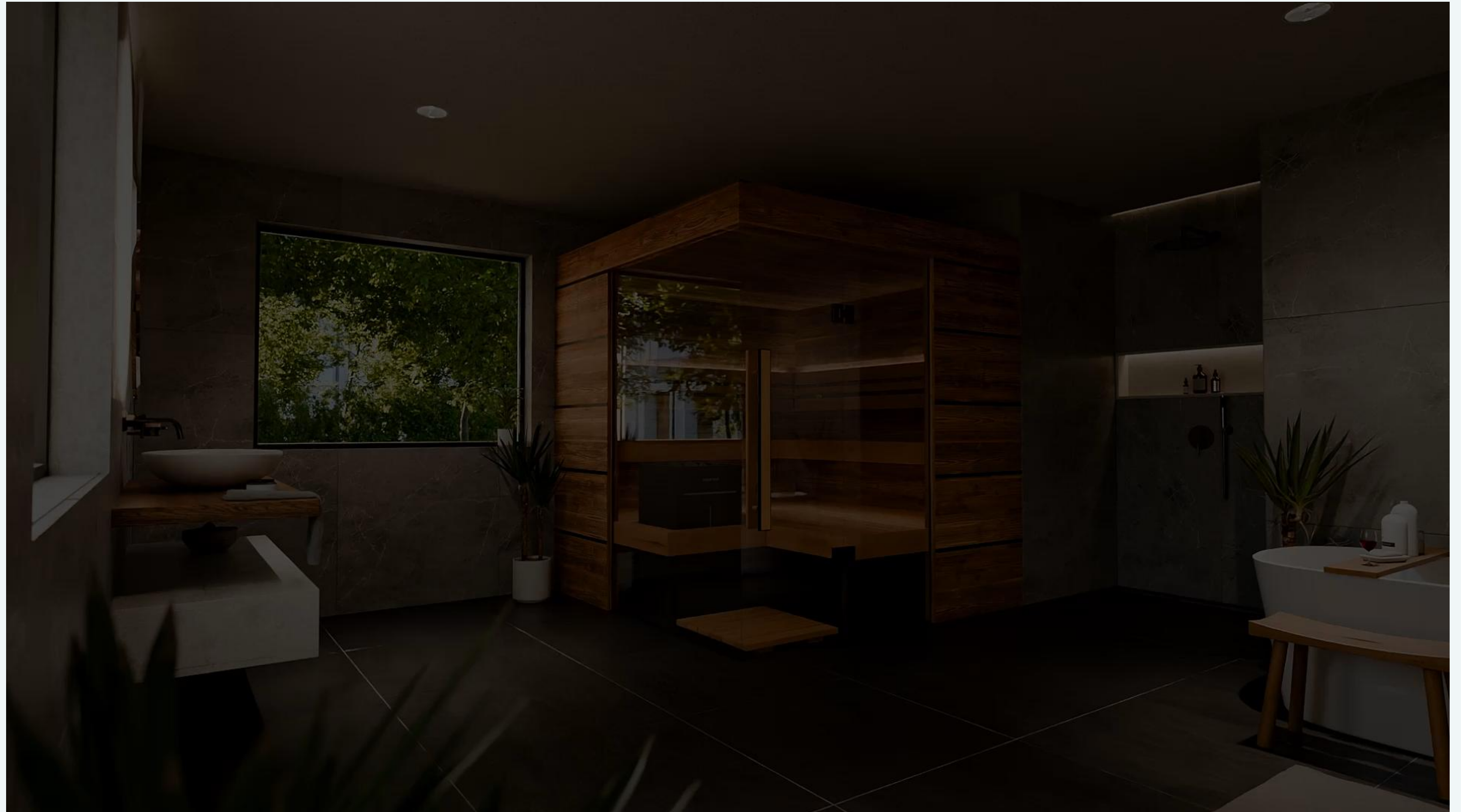
Warm, Elevated, Grounded

Aalto brings a grounded sense of calm to any interior, blending structured design with natural elements for a deeply restorative sauna experience. Inspired by the Latin word for “high” or “elevated,” Aalto embraces vertical patterns and symmetry to evoke strength and serenity. Designed for 2–4 users, space-conscious layout features warm finishes balancing clarity and privacy for a retreat at home.

Interior Sauna - Lumaria



Interior Sauna - Astra



Interior Sauna - Aalto



Planning & Design: Interior Saunas

To ensure a safe and seamless sauna installation, follow these key requirements:

Flooring

- Use a flat, level surface; preferably ceramic tile or man-made stone to support the sauna structure and for ease of cleaning and heat retention.
- Avoid drain access.

Clearance & Airflow

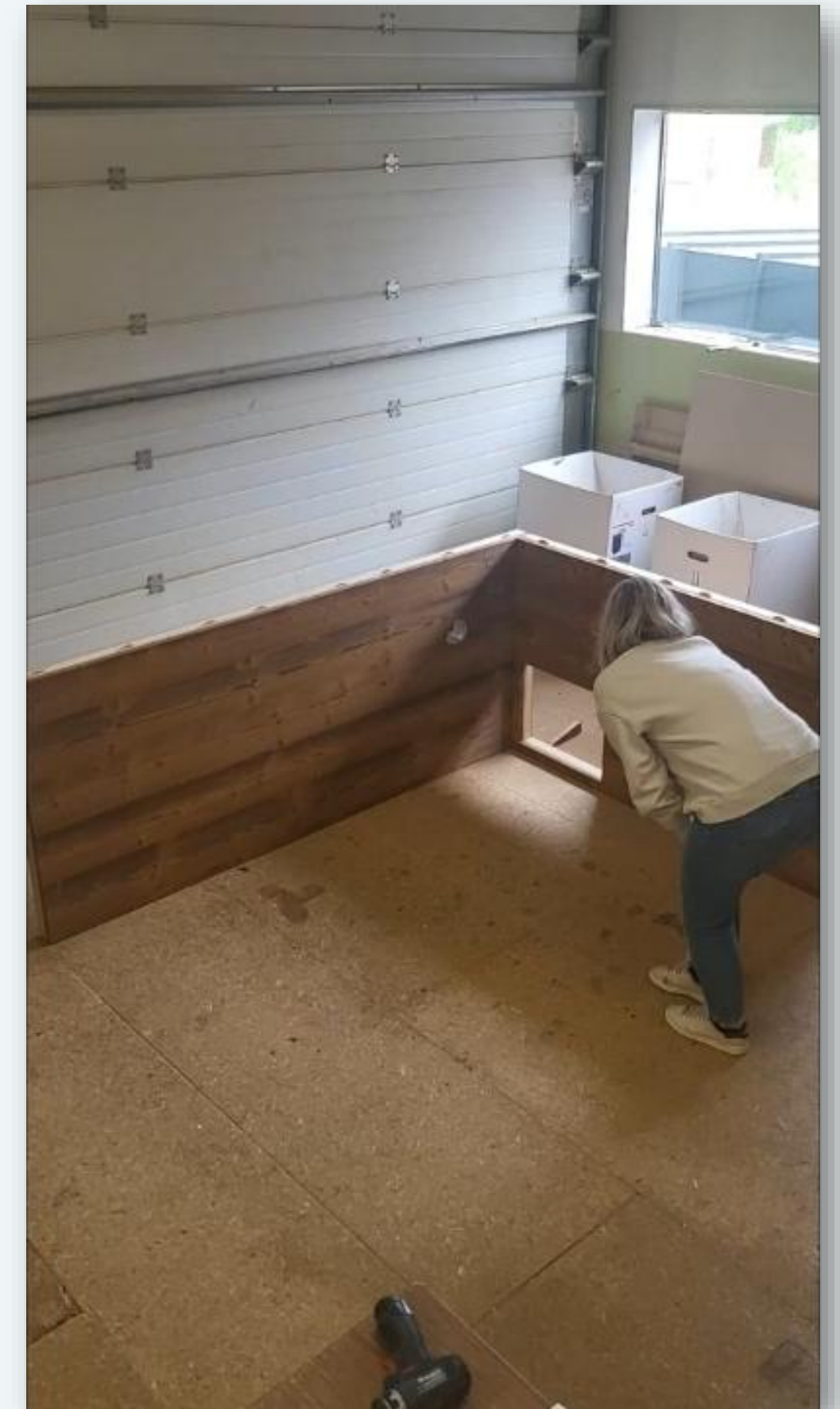
- Maintain a 2in air gap between exterior sauna walls and surrounding interior walls.
- Allow fresh, passive air flow to heater through inlets and outlets.

Site Access Check

- Confirm sauna cabin dimensions to ensure proper clearance to access points, including elevators, stairwells and doorways.
- Provide 3ft of working space around the sauna to ensure clearance for assembly.

Electrical Requirements

- Sauna heater and lighting must be hardwired by a licensed electrician.
- Check voltage and breaker size requirements.



Interior Sauna - Build

Outdoor Sauna Offering



7 Remarkable Collections

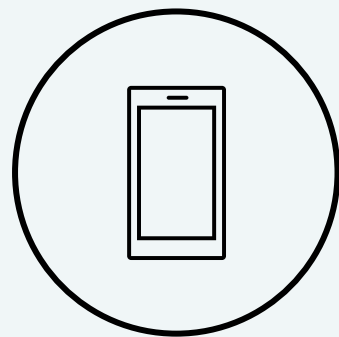
- Multiple size and configurations
- Nordic-design inspired
- Engineered through quality European craftsmanship
- Premium material combinations
- Featured Wi-Fi-enabled controls through MyHarvia App
- Integrated full spectrum LED lighting
- Each sauna is a turnkey solution: cabin, heater, stones, & controls
- Arrives fully assembled, utility placement and hookup required
- Outdoor rated with built in rain guard gutter system and sub temperature reinforcement

Notables

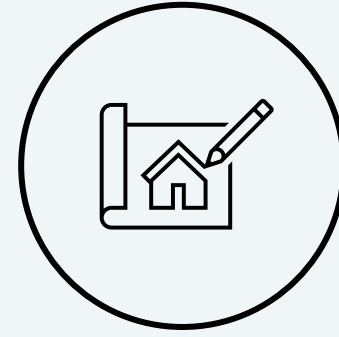
- Lead times – 12-14 weeks from accepted order
- Freight – Quoted per project, by landing address
- Shipping – Fully assembled & drop shipped
- **Crane and/or forklift required** on site to locate the sauna from delivery truck to point of installation (*end user is responsible for coordinating a forklift/crane service provider*)



Turnkey



Smart
Control



Design



Quality

Engineered for the Elements





Fortis

Architectural, Grounded, Enduring

Fortis stands with intention; an outdoor sauna rooted in strength, symmetry, and permanence. Designed for 2–6 people, it offers a generous interior with wide benches and full-spectrum heat retention. Defined by clean lines, Fortis becomes a commanding presence in any exterior space, built to last and designed to restore.



Ombra

Subtle, Immersive, Atmospheric

Inspired by shade and stillness, Ombra invites you into a softened world of contrast. Its dark-toned wood, muted finishes, and framed lighting create a cocoon-like escape that tempers the senses. Designed for 2–4 people, Ombra evokes quietude and warmth, becoming a private retreat for emotional reset under open skies.

Outdoor Sauna - Fortis



Outdoor Sauna - Ombra





Vue

Open, Expansive, Framing Nature

With its panoramic glass front and open sightlines, Vue brings the landscape into the ritual. Designed for 2–6 people, it offers uninterrupted views and a deep sense of perspective—transforming outdoor wellness into a visual and sensory escape. Vue dissolves the boundary between body and environment.



Vera

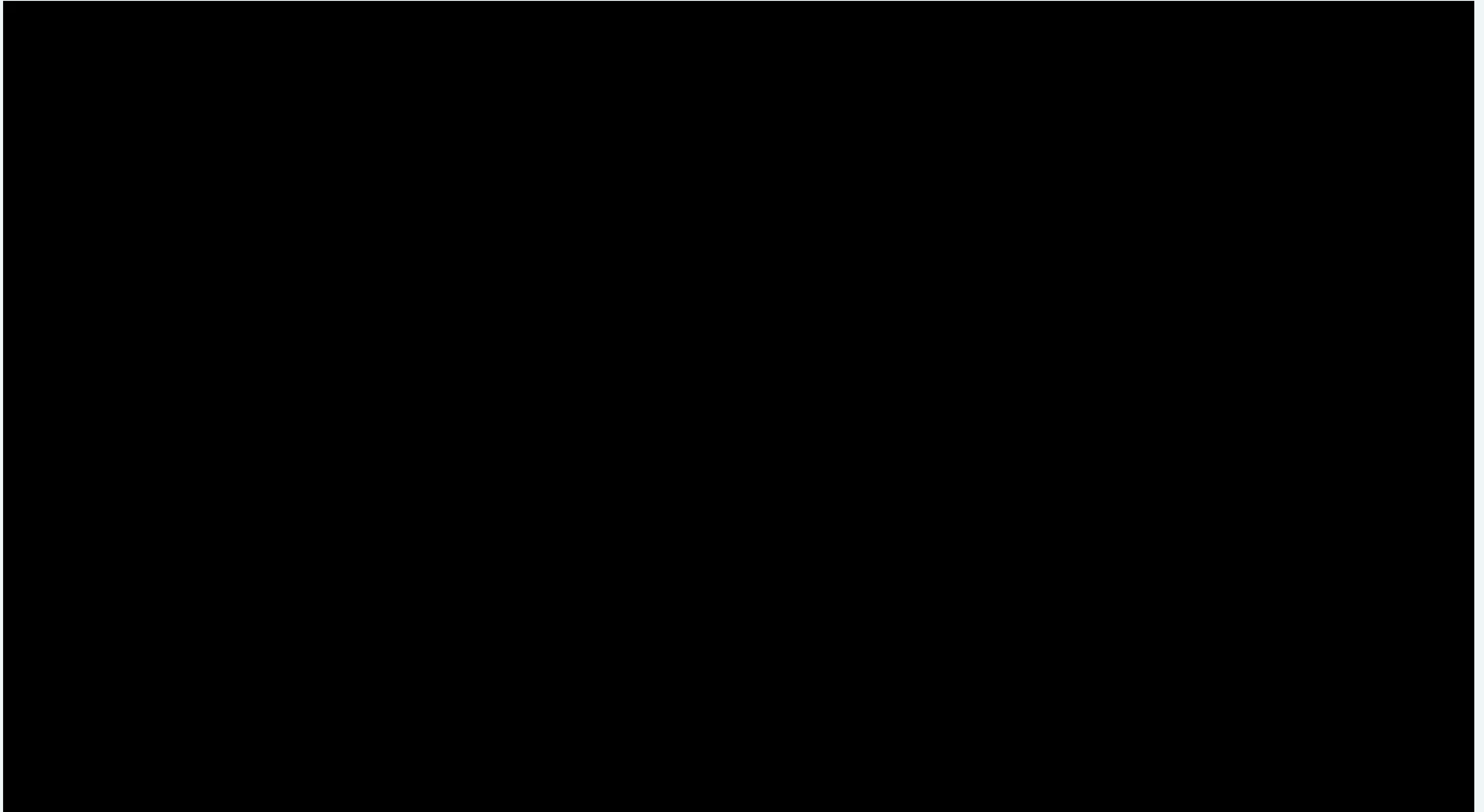
Natural, Minimal, Honest

Vera embraces the purity of Nordic tradition and the simplicity of open-air living. Designed for 2–5 people, it balances structure and nature—offering a calming, elemental space built with clean materials and intuitive design. Vera reflects a philosophy of authenticity and connection in every detail.

Outdoor Sauna - Vue



▶ Outdoor Sauna – Vera (*featuring transparent glass*)





Spectra

Expressive, Dynamic, Transformative

A multisensory experience designed to shift mood and elevate the everyday, Spectra combines color, heat, and design into one radiant whole. With space for 2–4 users, it features integrated chromotherapy, customizable lighting, and refined surfaces that respond to your energy. Spectra is where wellness meets wonder.



Solaris

Bright, Balanced, Elemental

Solaris draws its essence from sun and sky—blending light and heat into a radiant outdoor retreat. Designed for 2–5 people, it features warm wood tones, softened angles, and natural illumination that complements its surroundings. Solaris is a space of clarity, joy, and thermal renewal.



Nordic Dawn

Lively, Restorative, Elevated

Nordic Dawn captures the clarity and renewal of morning light in the North. With a refined Scandinavian design and space for 2–4 people, it offers a fresh take on outdoor sauna tradition. Pale wood interiors, soft angles, and thoughtful ventilation create a serene environment where each session feels like a new beginning.

Outdoor Sauna – Spectra



Nordic Misty Outdoor Collection



Design Your Own Wellness Retreat

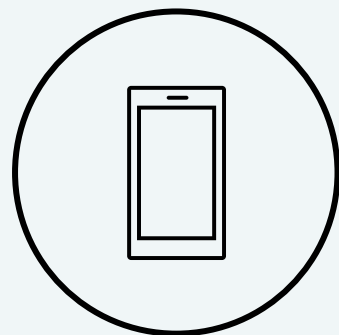
- Multiple modular configuration options: Changing room, terrace lounge, pergola, etc.
- Built for year-round, all-season use
- All modules are fully assembled and weather-proofed
- Lumber: Heat treated aspen wood, dark annex stain
- Wood burning heater option
- Modules can be connected or freestanding
- Ideal for scalable wellness experience, from compact patios to luxury estates

Notables

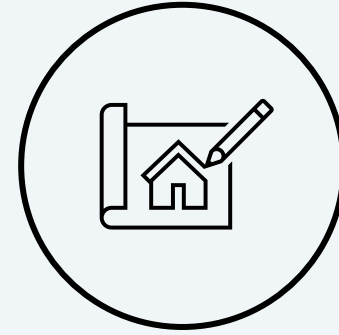
- Lead times – 12-14 weeks from accepted order
- Freight – Quoted per project, by landing address
- Shipping – Fully assembled & drop shipped
- **Crane and/or forklift required** on site to relocate the sauna from delivery truck to point of installation (*end user is responsible for coordinating a forklift/crane service provider*)



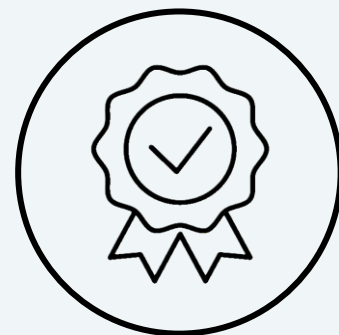
Turnkey



Smart
Control



Design



Quality

Nordic Misty Outdoor Collection



Nordic Misty Outdoor Collection



Planning & Design: Outdoor Saunas

To ensure a safe and seamless sauna installation, follow these key requirements:

Foundation with Drainage

- Install on a poured concrete pad, pavers, or other stable, well-drained base to support the structure and prevent moisture damage.

Crane Access Required

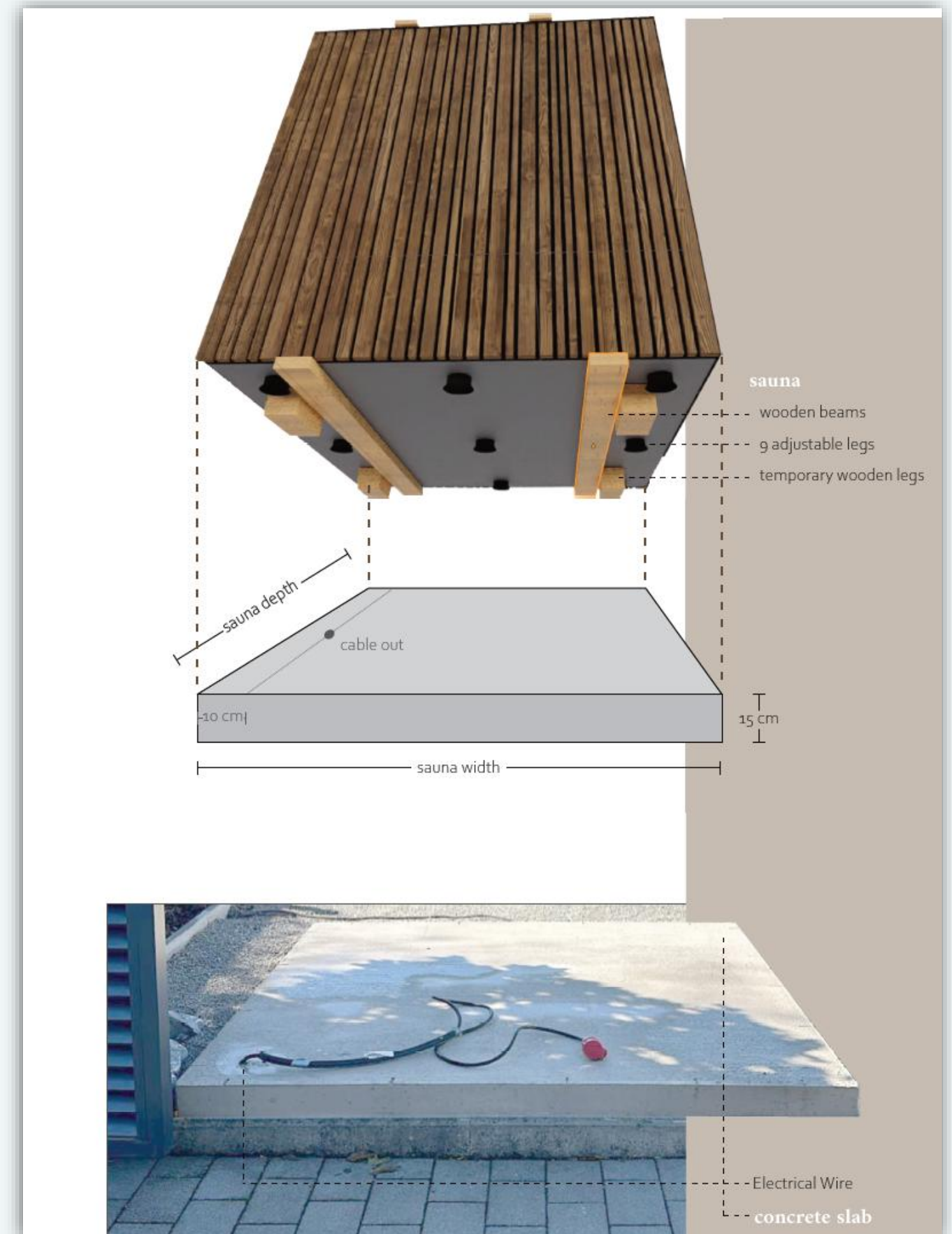
- The saunas are pre-assembled and require adequate access for a crane operator to safely lift and place the unit (*clear overhead and lateral space*).

Ventilation & Wood-Burning Heaters

- Maintain proper clearance from structures and vegetation; confirm chimney path is unobstructed and complies with local codes.
- Ensure all fresh air inlets and outlets are unobstructed.

Electrical & Control Lines

- Run hardwired electrical service to the sauna (*per heater requirements*). If controls are mounted inside the residence, include a BUS cable for communication between sauna and controller.



Outdoor Sauna – Delivery





Custom Cut Sauna Kits

A custom-cut sauna kit is designed to be installed within a pre-built room or enclosure, such as a home bathroom, wellness suite, or spa build-out. The walls, ceiling, benches, and heater are precision-cut to fit exact room dimensions and are assembled on-site. It's ideal for interior spaces where you want the sauna to integrate seamlessly into existing architecture while maintaining flexibility in layout and material selection.

Steps to Price out a Kit:

- Fill out the custom cut sauna form
- Include any drawings or interior design layouts
- Include any desired heaters or functionality
- Attach any inspiration imagery if available

Design Guidelines:

- Interior height should not exceed 8ft
- Two levels of bench tiers are ideal for a layered temperature experience (*temperatures can jump up to 10-20 degrees*)
- At least 1 bench should allow a user to lay down
- Large quantities of glass will require a more powerful heater kW
- Any commercial/public installation requires ADA and/or accessibility guidelines



SAUNA HEATERS

Evolution of Sauna Heat

Smoke Sauna

A fire is built directly beneath a pile of stones without a chimney; once the room fills with smoke, the space is ventilated, and the residual heat radiates from the stones. This creates a soft, aromatic, and deeply meditative heat experience.



Wood-Burning Heater

Wood-burning heaters introduced chimneys, offering more control and less smoke. These stoves heat the stones efficiently while keeping the traditional crackle and scent of wood, preserving the authenticity with easier daily enjoyment.



Electric Heater

Sleek design, rapid heat-up, and digital precision. Used in both residential and commercial settings, they provide consistent temperature and customizable control, bringing sauna into contemporary wellness without sacrificing tradition.





Art of Löyly

The Soul of the Sauna

- **Löyly (*loy-loo*):** The Finnish term for the soft, rolling steam created when water is ladled onto hot stones—a key moment of connection and purification.
- **Aufguss:** A guided ritual originating in Germany where a sauna master distributes essential oil-infused steam in choreographed waves using towels—enhancing scent, mood, and heat intensity.

These timeless practices are preserved and modernized in today's bio saunas, merging ancient ritual with comfort and control.



▶ Art of LÖYLY



THERMASOL®

WITH EOS

Sauna Heaters

EOS is a globally recognized leader in sauna heater innovation and engineering premium heating solutions in Germany for over 75 years. Known for precision craftsmanship, design-forward aesthetics, and cutting-edge performance, EOS heaters are trusted by luxury wellness spaces, spas, and discerning homeowners worldwide.

What sets EOS apart:

- German engineering with exceptional reliability and safety
- Wide range of models for residential, commercial, and custom saunas
- Innovative technologies like under-bench (*Invisio*) and high-capacity (*Mythos*) options
- Sleek, architectural designs that integrate beautifully into any space
- Compatible with advanced digital controls and aromatherapy systems
- EOS combines performance and elegance—delivering the ultimate sauna experience with consistent heat, fast recovery, and long-lasting durability



EOS Heater Offering



Gracil (W)

Best For

Compact private saunas

Key Features

Slim floor-standing or wall mounted design

Benefits

Ideal for smaller spaces; efficient and stylish



Cubo Avantgarde

Best For

Mid-size residential & light-commercial

Key Features

Clean cubic design; 7.5–9 kW capacity

Benefits

Sophisticated look with strong heating performance



Mythos S35 & S45

Best For

Medium to large residential/commercial

Key Features

High-capacity up to 15 kW; in stainless, black, or white finish options

Benefits

Powerful, premium option for bigger cabins



Invisio Midi

Best For

Minimalist for space-sensitive design

Key Features

Concealed under-bench, water infusion; 6–12 kW

Benefits

Maximizes interior space and enhances safety

THERMASOL®

WITH EOS

Touch3 Control

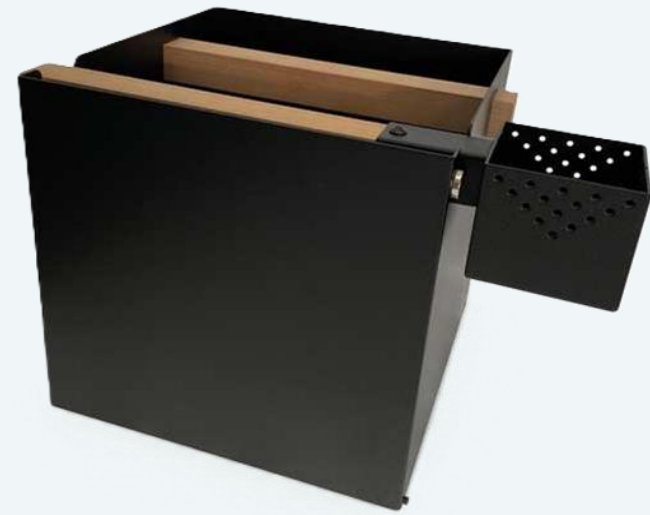


- 7in touch screen display
- Multi-cabin control - one interface replaces up to 8 separate control panels
- Vibrant user interface allows direct, intuitive access to all functions and settings, including the choice of various cabin themes
- Easy navigation with icons and clear text function with 20 languages to select from
- Pin code protected service level for extended settings and fine tuning
- Innovative guided setup and numerous smart control functions
- Control every connected cabin individually or operate them simultaneously
- Remote operation from a mobile device with the EOS Spa Control App
- Future-safe - the EOS Touch3 firmware can be easily updated via Wi-Fi
- System backup & restore - recalls your saved settings and profiles
- Digital temperature control range: 86 - 194 °F





Touch 3



Lux Accessory Kit



Armoatherphy Trophy



Thermometer & Hygrometer



Cubius Stones



Cubis Loop Stones



Lux Climate Station



Lux Sand Timer



Optical Lense Rack



Towel & Robe Rack



Mobile Device Rack



Emergency Shut Off



How To Size & Price

1. Measure the sauna room
 - Find the total cubic volume
 - *Multiply: Length × Width × Height = Cubic Volume*
2. Add adjustment for glass or stone walls
 - If the sauna has glass, tile, or stone, add 15–25% to the volume
3. Choose the right EOS heater model
 - Use the adjusted volume to find a heater with the matching kW rating
4. Don't forget to include accessories
 - Optional accessories: wall guards, diffuser, bucket & ladle, aromatherapy trophy, climate station, and more

A completed order will have 3 SKUs:

- Choice of heater (*includes set of rocks & probe*)
- Power box
- Touch3 control

Planning & Design: EOS Heaters

- **Proper Sizing**
 - Available in 6kW - 15 kW models
 - Adjust sauna volume for glass/tile surfaces (+15–25%)
- **Electrical Requirements**
 - 240V 2pH or 208V 3pH
 - Hardwired connection – must be installed by a licensed electrician
- **Controls**
 - Control is installed outside the sauna
 - Power box is installed outside of the sauna with access
- **Installation & Clearance**
 - Place on a non-combustible surface
 - Maintain 2"–4" wall (based on heater spec)/bench clearances
- **Safety & Ventilation**
 - Use heat shields or a non-combustible back guard if over 9kW
 - Load only approved sauna stones, loosely stacked
 - Ensure ventilation and airflow with a fresh air inlet and outlet

