



2018 CLASS CATALOG

BeadandButtonShow.com

Online Registration Begins
January 9, 2018



Bead & BUTTON
Show

June 3-10, 2018
Milwaukee, Wisconsin

Shop the Bead&Jewelry Expo
June 8-10, 2018

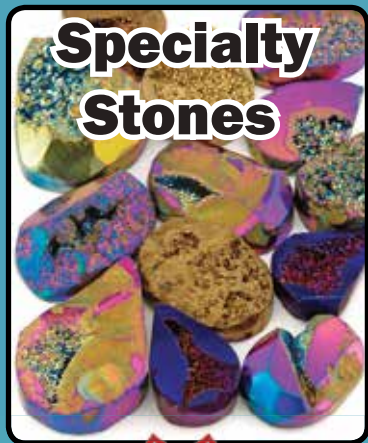


ECLECTICA

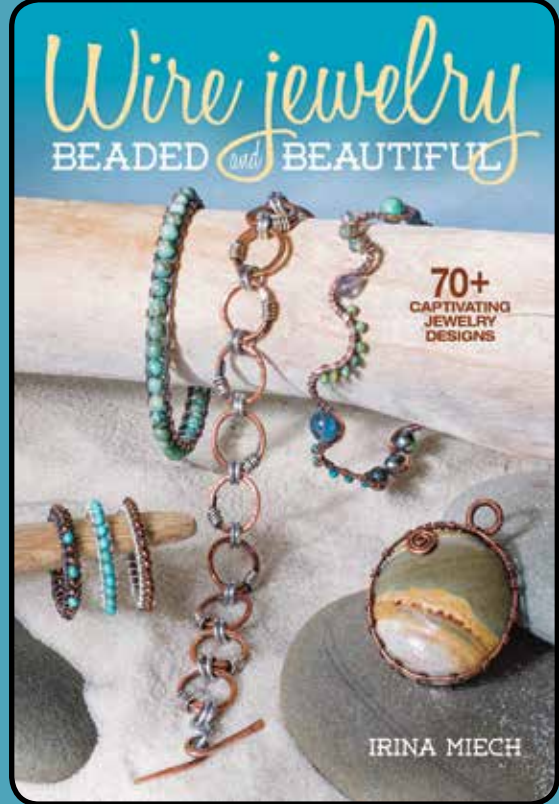
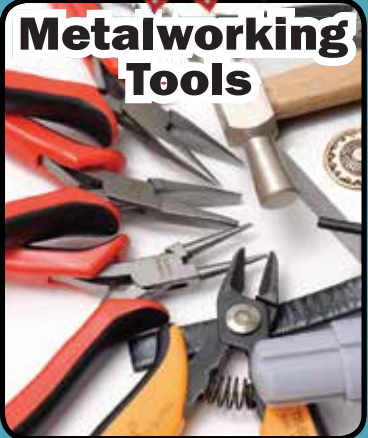
www.eclecticabeads.com
Booths 601,603,605,700,702,704



**Find us on
Facebook**



**Stop by the
Kiosk at the
Hyatt, if you
need tools for
a class.**





Durable!

Soft Flex® Beading Wire



"This is the best beading wire for jewelry makers around – at least in my estimation. It is durable and fairly easy to use. This is the only one I use after trying several."

– Customer Review

To Bead True Blue

Jan. 27 - Feb. 3, 2018

New Location

Casino Del Sol

5655 W Valencia Rd
Tucson, AZ 85757

Visit us in the **Ballroom**,
Booths 170, 183

Made in the USA 🇺🇸 • Kink resistant & Flexible
Knots like thread • 100% Waterproof & Non-tarnishing
Extensive selection of diameters and spool lengths
Largest color selection • Hand checked for quality



www.SoftFlexCompany.com

Toll Free Phone (866) 925-3539 • U.S. Phone (707) 938-3539



#softflexwire

\$5 Flat Rate Shipping On U.S. Orders – No Minimum Order

Greetings



The Bead&Button Show and magazine staff (clockwise from top left):
Lori Schneider, Exhibitor Sales, Dawn Buss, Events Specialist; Sara Dumford, Director; Jane Bremmer, Events Specialist; Julia Gerlach, Editor; Kristin Jastroch, Events Specialist; Linda Kollatz, Events Specialist.

Welcome to the 2018 Bead&Button Show!

Inside these pages you'll find everything you need to know to plan your getaway to Milwaukee for the 2018 Bead&Button Show. This week-long celebration of jewelry includes CLASSES that showcase beads, metal, and wire, from talented instructors sharing their artistry in fun and unique ways, plus more SHOPPING than you could ever imagine. It's the Ultimate Dream Jewelry Experience!

Start Browsing

We can't wait for you to browse through this catalog and see the classes created for you by our outstanding faculty. This year's lineup of more than 600+ classes includes offerings in a wide variety of materials, techniques, and styles. If you can create it with beads, crystals, gemstones, wire, metal, or metal clay, you can find a class for it at the Bead&Button Show. View the class listings on pages 12-63 to get started.

You're Invited

We'd also like to invite you to our Meet the Teachers Reception on Friday, June 8, in the Wisconsin Center 1st floor Ballroom. This gathering is a perfect place to connect with classmates, chat with jewelry artists, meet

your instructors ... and SHOP. Instructors will be selling kits during the event so you can find unique materials, and buy them directly from the artists!

Register Online Starting January 9, 2018

Once you've decided on your classes, be sure to review the Hotel and Travel Information on page 74 and the Registration Information on page 6 to start planning your trip to Milwaukee. Then starting January 9, 2018, visit BeadandButtonShow.com to register for your selected classes.

We can't wait to see you in June! Questions? Contact us at customerservice@beadandbuttonshow.com and we can help.

Sincerely,

Sara Dumford
Show Director
sdumford@kalmbach.com

Julia Gerlach
Editor
Bead&Button magazine

On the cover:
Necklace: B180430 Zayandeh - Beki Haley
Bracelet: B180446 Metal Morphosis Cuff with Cabochon - Eva Sherman
Ring: B180786 Spinner Ring - Robyn Cornelius

Contents


Show Schedule	P. 6	Class Listings	P. 12-63	Instructor Listing	P. 64-71
Registration Info	P. 6	Sunday, June 3	P. 12-18	Souvenirs	P. 72
Special Events	P. 7	Monday, June 4	P. 18-24	Competitions	P. 73
Master Classes	P. 8	Tuesday, June 5	P. 24-32	Hotel and Travel Information	P. 74
Commemorative Bead Artist	P. 10	Wednesday, June 6	P. 32-41		
Excellence in Jewelry		Thursday, June 7	P. 41-46		
Artistry Award Winner	P. 10	Friday, June 8	P. 46-51		
		Saturday, June 9	P. 51-60		
		Sunday, June 10	P. 61-63		

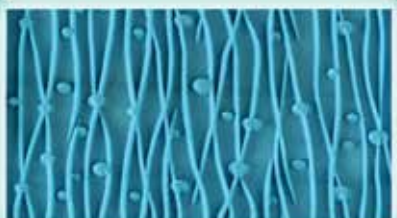
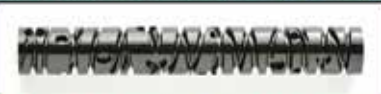
Bead&Button Show – Shopping Resource Guide



Shop Here

for your class supplies, and for
ALL of your jewelry making needs!

KorTools 



KPeR-16 7.5cm Acrylic Roller
www.kortools.com (920) 903-8918

Your SPECIAL PROJECT
Should have a Special Clasp!



CLASMEYER.COM
Come to BOOTH 1201 with this AD
and get 20% off any one clasp!

Artist, teacher
and purveyor of
fine kits and
beading
supplies



909-338-0296
P.O. Box 3666
Crestline, CA 92325-3666
info@cynthiarutledge.net
www.cynthiarutledge.net
Cynthia Rutledge
CONTEMPORARY DESIGNS OF TIMELESS ELEGANCE

ImpressArt®

NEW
Premium Blanks

Brighter Finish, Thicker Gauge
Softer Edges and Easier to Stamp

Available in brass, copper, Alkermé
and aluminum



ImpressArt.com

Show Schedule

Onsite Registration

Saturday, June 2

Hyatt Hotel 3 – 6 p.m.

Sunday, June 3

Hyatt Hotel 7:30 a.m. – 6 p.m.

Monday, June 4

Hyatt Hotel 7:30 a.m. – 6 p.m.

Tuesday, June 5

Hyatt Hotel 7:30 a.m. – 10 a.m.
Wisconsin Center 3 – 6 p.m.

Wednesday, June 6 –

Saturday, June 9

Hyatt Hotel 7:30 a.m. – 6 p.m.

Sunday, June 10

Wisconsin Center, 8:30 a.m. – 4 p.m.

Make 'N Takes and Demos

Keep your eyes open for these exciting opportunities at the Wisconsin Center Friday – Sunday, June 8 – 10.

Sponsored By:



Registration

Show Locations

The Bead&Button Show is held at the Wisconsin Center, 400 W. Wisconsin Avenue, Milwaukee, Wisconsin. Classes are also held at the Hyatt Regency Downtown Milwaukee, the Hilton Milwaukee City Center, and Milwaukee Area Technical College (MATC).

REGISTRATION OPENS JANUARY 9, 2018 AT NOON CENTRAL TIME.

Badge and Class Schedule Pickup

You will pick up all badges, class schedules, and information at the onsite registration desk at the Show. Please check BeadandButtonShow.com Show Schedule page for dates, times, and locations.

Classes

Hyatt, Hilton, Wisconsin Center

Sunday, June 3 –

Wednesday, June 6

9 a.m. – 4 p.m.

6 – 9 p.m.

Thursday, June 7

8:30 a.m. – 3:30 p.m.

Friday, June 8

9 a.m. – 4 p.m.

Saturday, June 9

9 a.m. – 4 p.m.

NEW! Saturday Night Classes

6 – 9 p.m.

Sunday, June 10

9 a.m. – noon

Master Classes

Milwaukee Area

Technical College

Friday, June 1 –

Sunday, June 3

Monday, June 4 –

Wednesday, June 6

Sold Out Classes

If you wish to register for a class that is showing SOLD OUT, please revisit the website regularly for newly added seats or duplicate classes.

Class Additions, Refunds, and Cancellations

Once you register, you can add classes or special events at any time. You can cancel a general class for a refund through March 23, 2018 for a processing fee of \$20. See the FAQ section on BeadandButtonShow.com for further details and information on cancelling a Master Class. There are no refunds after March 23, 2018. The \$35 registration fee is nonrefundable.

Shopping

Tuesday, June 5

Moonlight Madness
Hyatt Regency Ballroom
9 – 11 p.m.

Thursday, June 7

Preview Shopping Eve
(for registered attendees only)
Bead&Jewelry Expo
4 – 8 p.m.

Public Shopping Days – Bead&Jewelry Expo

Friday, June 8

10 a.m. – 7 p.m.

Saturday, June 9

10 a.m. – 6 p.m.

Sunday, June 10

10 a.m. – 4 p.m.

Special Events

Tuesday, June 5

Moonlight Madness
Hyatt Regency Ballroom
9 – 11 p.m.

Friday, June 8

Meet the Teachers Reception
Wisconsin Center
1st floor Ballroom
8 – 10:30 p.m.

When Does the Expo Open?

The Bead&Jewelry Expo opens Thursday, June 7, 2018 for registered attendees. This is the Private Preview from 4 – 8 p.m. on the 3rd floor of the Wisconsin Center. The Expo is open to the public Friday, June 8, at 10 a.m. and closes Sunday, June 10 at 4 p.m.

Wholesale Badges

We welcome designers and retailers to the Show. Purchase a registration badge online or onsite and then add a designated designer or retailer ribbon to the badge. Note: a designer or retailer badge does not guarantee wholesale discounts from exhibitors. Transactions are subject to the discretion, criteria, and discount policies of the individual exhibitors.

Visit BeadandButtonShow.com for all details.

Special Events

Moonlight Madness

Tuesday, June 5

9 – 11 p.m.

Hyatt Regency Ballroom

Admission is FREE to all attendees

Get a sneak peek at the Bead& Jewelry Expo and start your shopping! Exhibitors will set up tables, showcasing and selling products. ALL ARE INVITED!

Sponsored by:



Private Preview — Bead&Jewelry Expo OPEN FOR STUDENTS, WHOLE- SALE, AND RETAILERS

Thursday, June 7

4 - 8 p.m.

Wisconsin Center, 3rd floor

Start your shopping at our special Private Preview for registered attendees only.

Meet the Teachers Reception

Friday, June 8

8 – 10:30 p.m.

Wisconsin Center, 1st floor Ballroom

Meet the Bead&Button Show teachers in a unique reception setting. Instructors will set up tables to share their work, sell products and kits, and connect with you. We recommend you bring cash or checks as not all instructors accept credit cards.

Sponsored by:



Girl Scouts Classes Rock Candy Party!

Saturday, June 9

9 - 11 a.m. and 1 - 3 p.m.

Wisconsin Center

Grab a friend — or your whole troop — for a two-hour jewelry-making class



taught by a renowned bead and jewelry artist! This new program includes an introduction to tools and materials, a technique demonstration, hands-on crafting, supplies, use of tools, and a completed jewelry project. You'll also get complimentary admission to the Bead&Jewelry Expo, a Show pin, and \$5 in Bead&Button Show Bucks to spend on the Show floor. The program is open to Girl Scouts, grades 7-12. Register online at <https://www.gswise.org/en/Activities/activities-list.html>.

Bead&Button Show Gives Back

Help us reach our lifetime goal of \$100,000! You can donate to this worthy cause when you register online at BeadandButtonShow.com. Donations of \$5, \$10, or \$20 are gratefully accepted.


A portion of the proceeds from the Meet the Teachers Reception go to the Medical College of Wisconsin Breast Cancer Research Program.



3 CLASSES OFFERED
EXCLUSIVE, MODERN DESIGNS

Melanie Potter

B180883 - B180884 - B180885




T-beads

Your source for beautiful artist beads!

www.T-Beads.com

Tammy Oszczepinski Kerber
info@T-Beads.com



Master Classes

For complete class details, applications, and information, visit BeadandButtonShow.com.



Metal: Elongated Framed Cloisonné Pendant

James Carter

June 1-3

The project will be an elongated framed pendant. It can be all cloisonné or students may choose to add textured silver as part of the design. Designs can be simple or intricate depending on level of expertise.

Class Number: B18E

Class Fee: \$1,145 plus \$100 kit fee

Who should take this class? This class is for all skill levels.



Metal: Hinges and Joints: Standard, Invisible & Universal

Tom Muir

June 4-6

This hands-on workshop will focus on three types of hinges for the jeweler/metalsmith: an integral hinge (invisible or hidden hinge), a standard 3- to 5-knuckle hinge, and a universal joint hinge.

Class Number: B18M

Class Fee: \$1,145 plus \$15 kit fee

Who should take this class? This class is for beginning to advanced skill level. Some sawing and soldering experience helpful.



Kumihimo: Decoding Complex Braids

Adrienne Gaskell

June 4-6

The program is designed to teach students complex braiding techniques and how to transform these into designs that define their own personal style.

Class Number: B18K

Class Fee: \$1,145 plus \$50 kit fee

Who should take this class? This class is for students who have experience using a marudai.



Beadwork & Metal: Meet in the Middle

Cynthia Rutledge

June 1-3 and June 4-6

The best of both worlds come together in this workshop to explore the process of creating miniature boxes. In this workshop we will explore techniques that lend themselves to a variety of box shapes.

Class Number: B18B

Class Fee: \$1,145 plus \$110 kit fee

Who should take this class? This class is for advanced jewelry makers.

Master Classes: The Bead&Button Show VIP Experience

Master Class students enjoy a true VIP experience at the Show, including:

- \$35 registration fee waived.
- Choice of three-day intensive class.
- Transportation to and from MATC where the classes are held.
- Advance registration for additional general classes.
- Show tote, commemorative bead, pin, and T-shirt.
- Catered breakfast and lunch on class days.
- Relaxing celebration reception.

These popular jewelry-making immersion classes fill up quickly, so don't delay! For more details and applications, visit BeadandButtonShow.com.



"I am giddy, expectation whirls me round.
The imaginary relish is so sweet
that it enchants my sense."

William Shakespeare
Sarracenias are carnivorous plants that lure insects
into their slippery pitchers using color, scent, and
drugged nectar. Once trapped inside the pitcher,
the hapless insect drowns and is digested.

ANNE CHOI
HANDMADE SILVER BEADS
www.annechoi.com

Karen Bruns' Designs



Project completed by Sherry Serafini

- Kits/Patterns/Classes
- Glass Cabochons
- Curved Dichroic Bands

Booth
#110

www.etsy.com/shop/KarenBrunsDesigns

BEADCATS™

www.beadcats.com

Glass seed beads 11" to 24"
exclusive Czech molded beads
books, videos & innovative supplies
60-page retail Catalog • \$4.00

Wholesale with credentials
PO Box 2840, Dept. W
Wilsonville, OR 97070-2840
503.625.2323 voice • 503.625.4329 fax



We have
Kits!

Artists & Teachers:
Virginia Blakelock &
Carol Perrenoud

XURON®
CORP.

2175 Maxi-Shear™
Flush Cutter



"25 years as a jewelry instructor
I have cut A LOT of wire.
The Maxi-Shear™ Flush Cutter
cuts up to 12ga. soft wire,
produces a clean flush cut
and stays sharp."

"It's the wire cutter I always keep
in my work apron. Simply my favorite!"

Join us online at XURON.COM



Kate Richbourg
Jewelry Educator



New
Batik Elements




Bead & Button
Booth
728

Glass Garden Beads
A Minnesota Company
"We make Kits!"
www.glassgardenbeads.com

Craft  **optics®**
Telescopes

Magnify
your
talents®

I can see
clearly now,
the strain
is gone...

Patented optics
customized with your Rx



Jewelry Arts
Beadwork
Quilting
Needlepoint
Cross-Stitching
Sewing

**MONEY BACK
GUARANTEE**

Use your FSA/HSA

craftoptics.com • 888.444.7728



Commemorative Bead Artist

Aja Vaz



Our stunning 2018 Show Bead is the creation of glass artist Aja Vaz. Aja's work is abstract and organic, and is a result of thinking upside-down and inside-out in an effort to harvest her mind's view. The principles of wabi sabi (the acceptance of imperfection) fascinate her, and textures that are worn, rough, rusty, or patina inspire her. Aja constantly asks, "How can I bring the organic into a molten piece of glass?"

A country girl at heart who was raised in a family of "make-do-and-mend-ers," Aja's background influences her work in ways that allow her to do more with less: fewer tools, colors, and time. With her husband on active duty in the military, frequent cross-country moves are the norm. As a rolling stone gathers no moss, a moving artist keeps her needs simple and without frills.

Now, after more than a decade of evolving her craft, she owns Wandering Spirit Designs and continues her exploration to link nature and glass. When someone holds one of her beads in the palm of their hand and exclaims, "This is glass?" Aja knows

she's succeeded in translating her vision.

The Commemorative Bead

This blown-glass hollow has Aja's distinctive approach of using earth tones and mimicking reactions similar to ceramics. Although hundreds of beads were created for the Bead&Button Show, each one is slightly different due to the inherent nature of the glasses used. Reserve yours now for pickup at the Show.

List Price: \$65.00

Item No. 65215

Size: 1" sphere (approximate)



We wish to thank our friends at ABR Imagery, Ross

Thackery, and their dedicated and expert staff, for their ongoing support of our glass and lampworking

sessions at the Bead&Button Show. Without ABR's commitment to our Show, the lampworking classes in particular, we would be unable to offer these unique sessions at our event. During the Show week, please visit ABR Imagery at their booth on the Show floor.

Excellence in Jewelry Artistry Award Winner

This year's award is underwritten by Shipwreck Beads™, which will honor Nancy's achievements with a \$1,000 gift certificate.



Nancy Cain



Nancy's Artist's Statement

I have sought to understand the nature of creativity and design through my work with beading. But how do you break creativity and design into a tangible, workable, and understandable concept that can be taught in a class so it may be applied in practice? I believe this is accomplished through insight into the design process.

As an instructor and as an artist, I think that insight is very much unique to each individual, but there are some fundamental elements that can be taught and understood universally. These elements can then be put into practice and applied towards a specific skillset.

A skillset is the practiced and practical foundation for the artist's creative expression and design success. The 10,000 hours of work necessary to

become an expert in any field are daunting, particularly developing the necessary ability to become a craftsman or artist. An individual with passion will do the time as a matter of commitment to creative growth, love of mastery of the medium, and interest in sharing one's unique way of seeing. A big part of this process can be understood through the acronym M.U.S.E.: Motivation, Understanding, Skill, Execution.

I see this as the process through which we find the necessary Motivation to Understand and improve our Skills so that we can best Execute new designs or projects. This isn't necessarily limited to only beading or artistry, which opens up worlds of possibility for growth and learning.

Congratulations, Nancy!



ISGB

International Society of Glass Beadmakers

Please visit us for live demonstrations at the
2018 Bead & Button Show



Photo by Larry Sanders

Fiber and Glass Necklace
Bernadette Scarani Mahfood



photo by Doug Baldwin

From RAD Exhibit
Karla Klein

The ISGB is the leading organization for the promotion, education, and appreciation of the art of glass and beadmaking for wearable, sculptural, and functional art.

Our mission is to preserve the rich and diverse traditions of the art of glass beadmaking and glassworking techniques; promote educational initiatives and professional development; and encourage innovative use of complementary mediums among artists and craftspeople.

The Gathering, our annual conference, will once again be in Las Vegas, Nevada. Join us April 4–8, 2018 and experience an engaging mix of the very best in presentations, workshops, tours, and many other activities that will both educate and inspire. Share collective knowledge and connect with us for the Gathering XXVI.

We invite you to join us on our journey through collaborative creativity in the worlds of glass and complementary mediums.

For more information, please visit us at www.isgb.org, email us at admin@isgb.org, or call 614.222.2243.

During the Bead&Button Show, visit the Expo to meet new ISGB artists



Arabesque Collection:
Arabesque Necklace B180225
Sun. June 3 • 9 a.m. - 4 p.m. (1 hr break)
Leslie Venturoso
Brick Stitch, Netting, Peyote Stitch, Right-angle Weave
\$314



Ariana, Keeper of the Blue Gem B180693
Sun. June 3 • 9 a.m. - 4 p.m. (1 hr break)
Patricia McDermott
Embroidery, Fringe, Gluing or Adhesive, Multiple Stitches, Peyote Stitch
\$284



Aster Necklace B180803
Sun. June 3 • 9 a.m. - 4 p.m. (1 hr break)
Jayashree Paramesh
Multiple Stitches, Peyote Stitch, Spiral Rope
\$224



Backyard Birdhouse in Silver Clay B180533
Sun. June 3 • 9 a.m. - 4 p.m. (1 hr break)
Lyle Rayfield
Metal Clay
\$239



Beadles B180260
Sun. June 3 • 9 a.m. - 4 p.m. (1 hr break)
Ralonda Patterson
Brick Stitch, Embroidery, Fiber-related, Multiple Stitches, Peyote Stitch, Wirework
\$214



Big Ring B180578
Sun. June 3 • 8 a.m. - 4 p.m.
Kaska Firor
Wirework
\$254



Bouquet of Posies B180010
Sun. June 3 • 9 a.m. - 4 p.m. (1 hr break)
Marcia Balonis
Multiple Stitches, Peyote Stitch, Right-angle Weave
\$122



Captured Helm B180049
Sun. June 3 • 8 a.m. - noon
Ronda Stevens
Chain Mail, Wirework
\$154



Chain Reaction B180270
Sun. June 3 • 9 a.m. - 4 p.m. (1 hr break)
Kathy Luli
Multiple Stitches
\$214



Colored Pencils, Patinas, Embossing with Easy Bezels and Cold Connections B180680
Sun. June 3 • 9 a.m. - 4 p.m. (1 hr break)
Mary Hettmansperger
Metalwork, Wirework
\$218



Concentricity Earrings B180050
Sun. June 3 • 1 - 4 p.m.
Ronda Stevens
Wirework
\$124



Cozumel Bracelet B180421
Sun. June 3 • 8 a.m. - noon
Kim Leahy
Ndebele Herringbone, Peyote Stitch
\$147



Crystal Drop Tassel Necklace B180189
Sun. June 3 • 9 a.m. - 4 p.m. (1 hr break)
Nikia Angel
Fringe, Multiple Stitches, Netting,
Right-angle Weave
\$229



Exploring Niobium B180537
Sun. June 3 • 9 a.m. - 4 p.m. (1 hr break)
Marti Brown
Metalwork, Wirework
\$239



EZ960 Wrap Rings B180087
Sun. June 3 • 9 a.m. - 4 p.m.; 6 - 9 p.m.
Lis-el Crowley
Metal Clay
\$294



Hinged Hide-A-Way Pendant B181900
Sun. June 3 • 9 a.m. - 4 p.m. (1 hr break)
Chris Mode
Metalwork, Soldering
\$259



In Memoriam B180503
Sun. June 3 • 9 a.m. - 4 p.m. (1 hr break)
Anna Lindell
Multiple Stitches, Ndebele Herringbone,
Peyote Stitch
\$194



Introduction to Metal Clay B180263
Sun. June 3 • 1 - 4 p.m.
Irina Miech
Metal Clay
\$159



Long Kumihimo Braided Necklace with Lampworked Beads B180617
Sun. June 3 • 9 a.m. - 4 p.m. (1 hr break)
Teresa Huntley
Kumihimo
\$249



Matryoshka Nesting Dolls B180879
Sun. June 3 • 9 a.m. - 4 p.m. (1 hr break)
Laura Andrews & Sian Nolan
Peyote Stitch, Right-angle Weave
\$229



Midnight Fiesta B180214
Sun. June 3 • 9 a.m. - 4 p.m. (1 hr break)
Lynn Yuhr
Polymer, Wirework
\$229



MiniDuos Budding Bangle B180887
Sun. June 3 • 9 a.m. - 4 p.m. (1 hr break)
Regina Payne
Multiple Stitches, Peyote Stitch
\$192



Now That's A Jig! Presents: Certification I & II B181001
Sun. June 3 • 9 a.m. - 4 p.m. (1 hr break)
Brenda Schweder
Wirework, Metalwork
\$199



Oh, That Fringe! B180440
Sun. June 3 • 9 a.m. - 4 p.m. (1 hr break)
Betty Stephan
Brick Stitch, Embroidery, Fringe, Gluing or
Adhesive, Multiple Stitches, Peyote Stitch
\$274



Petite History Cuff B180997
Sun. June 3 • 9 a.m. - 4 p.m. (1 hr break)
Naomi Smith
Embroidery, Multiple Stitches, Peyote Stitch
\$199



Poinsettia Cuff Bracelet B180837
Sun. June 3 • 9 a.m. - 4 p.m. (1 hr break)
Cary Borelli
Fringe, Multiple Stitches, Ndebele Herringbone, Peyote Stitch, Right-angle Weave, Square Stitch
\$234



Posh Pod Pendant and Chain B180755
Sun. June 3 • 9 a.m. - 4 p.m. (1 hr break)
Mary Yaeger
Netting, Right-angle Weave
\$219



Potomac Bead Company Presents: Libellula Soutache Necklace B180586
Sun. June 3 • 9 a.m. - 4 p.m. (1 hr break)
Julie Romero
Embroidery
\$249



Potomac Bead Company Presents: The Moon in the Starry Sky B180436
Sun. June 3 • 9 a.m. - 4 p.m. (1 hr break)
Monica Vinci
Embroidery
\$259



Potomac Bead Company Presents: Venezia B180685
Sun. June 3 • 9 a.m. - 4 p.m. (1 hr break)
Jolanda Violante
Bead Crochet
\$223



Pure Moodiness Bracelet B180388
Sun. June 3 • 9 a.m. - 4 p.m. (1 hr break)
Laura Zeiner
Brick Stitch, Peyote Stitch
\$219



Pyramid Pendant Necklace B180347
Sun. June 3 • 9 a.m. - 4 p.m. (1 hr break)
Leslee Frumin
Multiple Stitches, Ndebele Herringbone, Peyote Stitch, Right-angle Weave, Square Stitch
\$229



Reverie Necklace B180524
Sun. June 3 • 9 a.m. - 4 p.m. (1 hr break)
Maria Richmond
Metalwork, Wirework
\$194



Setting Unusual Gemstones B180775
Sun. June 3 • 8 a.m. - 4 p.m.
Robyn Cornelius
Metalwork
\$303



Shuttle Tatting Basics B180018
Sun. June 3 • 9 a.m. - 4 p.m. (1 hr break)
Marilee Rockley
Fiber-related
\$171



Snap 'N Swap Elegant Necklace: Wear It While You Make It! B180309
Sun. June 3 • 9 a.m. - 4 p.m. (1 hr break)
Carla Martins
Multiple Stitches, Peyote Stitch
\$314



Tempest Clasp B180761
Sun. June 3 • 8 a.m. - 4 p.m.
Sarah Thompson
Wirework
\$265



Temptress Bracelet B180579
Sun. June 3 • 9 a.m. - 4 p.m. (1 hr break)
Patty Tiry
Multiple Stitches, Right-angle Weave
\$204



The BeadSmith Presents: B180470
Veronique: A Soutache Pendant
Sun. June 3 • 9 a.m. - 4 p.m. (1 hr break)
Olga Vinnere Pettersson
Embroidery, Fiber-related, Gluing or Adhesive
\$414



The Peyote Beaded Button: B180181
An Element in Design
Sun. June 3 • 9 a.m. - 4 p.m. (1 hr break)
Ellen Solomons
Peyote Stitch
\$194



TOHO BEADS Presents: Dahlia 2 B180462
Sun. June 3 • 9 a.m. - 4 p.m. (1 hr break)
Hiroe Takagi
Fringe, Peyote Stitch, Right-angle Weave
\$216



TOHO BEADS Presents: B180675
Tsumami Flower Bead Embroidery Pendant
Sun. June 3 • 9 a.m. - 4 p.m. (1 hr break)
Emi Yamada
Embroidery, Ndebele Herringbone, Peyote Stitch
\$229



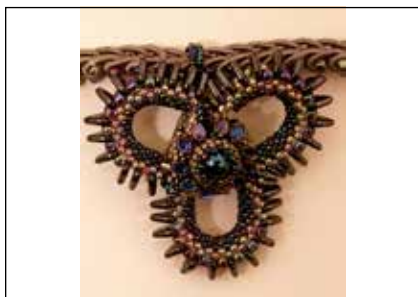
Vine and Grapes Pendant B180917
Sun. June 3 • 9 a.m. - 4 p.m. (1 hr break)
Kim St. Jean
Metalwork, Soldering, Wirework
\$214



Wild Blackberry B180101
Sun. June 3 • 9 a.m. - 4 p.m. (1 hr break)
Agnieszka Watts
Multiple Stitches, Netting, Peyote Stitch,
Right-angle Weave
\$216



Woodland Jewels B180434
Sun. June 3 • 9 a.m. - 4 p.m. (1 hr break)
Beki Haley
Multiple Stitches
\$239



3-D Fidget Spinner Pendant B180276
Sun. June 3 • 6 - 9 p.m.
Ralonda Patterson
Fiber-related, Ndebele Herringbone, Peyote Stitch
\$139



Bead Point Embroidered Clutch B180073
Sun. June 3 • 6 - 9 p.m.
Alexandra Sydorenko
Embroidery
\$179



BeadFX Presents: B180081
Glass Meets Metal Earrings
Sun. June 3 • 6 - 9 p.m.
Carolyn Cave
Chain Mail, Multiple Stitches, Ndebele
Herringbone, Netting
\$104



Beginner Bead Crochet

Sun. June 3 • 5 - 9 p.m.

Candice Sexton
Bead Crochet

\$169

B180569



Candy Cane Cord Bracelet

Sun. June 3 • 6 - 9 p.m.

Marilyn Gardiner
Chain Mail

\$118

B180127



Conveyance Wrap Bracelet

Sun. June 3 • 6 - 9 p.m.

Cary Borelli
Fringe, Multiple Stitches, Square Stitch

\$149

B180835



Diana Bracelet

Sun. June 3 • 6 - 9 p.m.

Kim Leahy
Peyote Stitch, Right-angle Weave

\$119

B180420



Drawstring Locket

Sun. June 3 • 6 - 9 p.m.

Laura Andrews
Wirework

\$119

B180867



Embrace Ring

Sun. June 3 • 6 - 9 p.m.

Sarah Thompson
Wirework

\$109

B180668



Forget Me Not

Sun. June 3 • 6 - 9 p.m.

Anna Lindell
Multiple Stitches

\$129

B180497



Garden Gate Necklaces

Sun. June 3 • 6 - 9 p.m.

Patricia McDermott
Embroidery, Gluing or Adhesive, Multiple Stitches,
Resin/Epoxy

\$139

B180592



Geometric Lace Necklace

Sun. June 3 • 5 - 9 p.m.

Laura Zeiner
Brick Stitch

\$167

B180404



Give Me a Clew Earrings

Sun. June 3 • 6 - 9 p.m.

Maria Richmond
Metalwork, Wirework

\$109

B180730



Kumihimo Noosa-Style Bracelet

Sun. June 3 • 6 - 9 p.m.

Teresa Huntley
Kumihimo

\$124

B180626



Level with Me!

Sun. June 3 • 6 - 9 p.m.

Chris Mode
Metalwork, Soldering

\$169

B180242



Mini Piercing

Sun. June 3 • 6 - 9 p.m.
Robyn Cornelius
Metalwork, Soldering
\$159

B180787



Mirror Image Earrings

Sun. June 3 • 6 - 9 p.m.
Kim St. Jean
Metalwork
\$139

B180953



Moonlit Evening Bracelet

Sun. June 3 • 6 - 9 p.m.
Renee Kovnesky
Multiple Stitches, Right-angle Weave
\$129

B180410



Native Strawberry Dreams

Sun. June 3 • 6 - 9 p.m.
Naomi Smith
Bead Stringing, Embroidery, Multiple Stitches
\$134

B180996



Nature's Elements in Silver

Sun. June 3 • 6 - 9 p.m.
Irina Miech
Metal Clay
\$162

B180277



**Now That's A Jig! Presents:
Start To The StartPeg 101**

Sun. June 3 • 6 - 9 p.m.
Brenda Schweder
Wirework, Metalwork
\$114

B181003



**Potomac Bead Company Presents:
Fashion Earrings**

Sun. June 3 • 6 - 9 p.m.
Monica Vinci
Fiber-related
\$139

B180437



**Potomac Bead Company Presents:
Lovely Drops**

Sun. June 3 • 6 - 9 p.m.
Jolanda Violante
Bead Crochet
\$154

B180469



Rainforest Leaves

Sun. June 3 • 6 - 9 p.m.
Marti Brown
Metalwork, Wirework
\$134

B180657



Scottish Heather

Sun. June 3 • 6 - 9 p.m.
Agnieszka Watts
Embroidery, Metalwork, Multiple Stitches,
Right-angle Weave, Square Stitch
\$154

B180021



Show Your Colors Cuff

Sun. June 3 • 6 - 9 p.m.
Leslie Venturoso
Peyote Stitch
\$164

B180221



Solara Petal Bracelet

Sun. June 3 • 6 - 9 p.m.
Mary Yaeger
Netting, Right-angle Weave
\$144

B180760



Starlux Reversible Necklace
Sun. June 3 • 5 - 9 p.m.
Jayashree Paramesh
Multiple Stitches, Peyote Stitch
\$179

B180298



**The BeadSmith Presents:
Honeycomb Bracelet**
Sun. June 3 • 6 - 9 p.m.
Olga Vinnere Pettersson
Multiple Stitches
\$228

B180474



Three in Three Earrings
Sun. June 3 • 6 - 9 p.m.
Lynn Yuhr
Polymer, Wirework
\$139

B180207



TNT Bracelet
Sun. June 3 • 6 - 9 p.m.
Ronda Stevens
Wirework
\$129

B180056



**TOHO BEADS Presents:
Jewel Bracelet**
Sun. June 3 • 6 - 9 p.m.
Hiroe Takagi
Peyote Stitch, Right-angle Weave
\$121

B180465



**TOHO BEADS Presents:
Vivid Color Necklace**
Sun. June 3 • 6 - 9 p.m.
Hana Kochi
Bead Crochet
\$144

B180480



**Applied, Embroidered,
and Embellished Wool Beads**
Mon. June 4 • 9 a.m. - 4 p.m. (1 hr break)
Susan Wojciechowski
Embroidery, Multiple Stitches
\$199

B180636



Arabella
Mon. June 4 • 9 a.m. - noon
Kim Rueth
Multiple Stitches, Netting, Peyote Stitch
\$127

B180762



Aurora Borealis
Mon. June 4 • 9 a.m. - 4 p.m. (1 hr break)
Agnieszka Watts
Multiple Stitches, Peyote Stitch, Right-angle Weave
\$226

B180008



**BeadFX Presents:
Nouveau Gem Necklace**
Mon. June 4 • 1 - 4 p.m.
Carolyn Cave
Multiple Stitches, Netting
\$139

B180077



Cattleya Orchid Brooch/Pendant
Mon. June 4 • 9 a.m. - 4 p.m. (1 hr break)
Alexandra Sydorenko
Bead Stringing, Beaded Flowers, Fringe, Gluing or Adhesive, Multiple Stitches, Peyote Stitch
\$230

B180514



Dancing Along the Seine
Mon. June 4 • 9 a.m. - 4 p.m. (1 hr break)
Diane Whiting
Multiple Stitches, Right-angle Weave
\$224

B180898



Donut Spinner B180269
Mon. June 4 • 9 a.m. - 4 p.m. (1 hr break)
Kathy Luli
Ndebele Herringbone, Peyote Stitch
\$219



Enchanted Crystal Lariat B180191
Mon. June 4 • 9 a.m. - 4 p.m. (1 hr break)
Nikia Angel
Multiple Stitches
\$254



Goddess Pendant B180094
Mon. June 4 • 9 a.m. - 4 p.m.; 6 - 9 p.m.
Lis-el Crowley
Metal Clay
\$314



**Inverted Teardrop Resin Filled
PMC Treasure Locket** B180970
Mon. June 4 • 9 a.m. - 4 p.m. (1 hr break)
Anne Mitchell
Metal Clay, Metalwork, Soldering
\$289



Jewel Encrusted Bangle B180886
Mon. June 4 • 9 a.m. - 4 p.m. (1 hr break)
Regina Payne
Multiple Stitches, Peyote Stitch
\$204



Layers of Texture Rings B180286
Mon. June 4 • 9 a.m. - 4 p.m. (1 hr break)
Irina Miech
Metal Clay
\$234



Make-A-Wish B180878
Mon. June 4 • 9 a.m. - 4 p.m. (1 hr break)
Laura Andrews & Sian Nolan
Gluing or Adhesive, Netting, Peyote Stitch
\$239



**Making Your Mark
with Kandinsky Bracelet** B180198
Mon. June 4 • 9 a.m. - 4 p.m. (1 hr break)
Lynn Yuhr
Polymer, Wirework
\$214



Mariposa Bead Embroidered Cuff B180526
Mon. June 4 • 9 a.m. - 4 p.m. (1 hr break)
Betty Stephan
Brick Stitch, Embroidery, Multiple Stitches,
Peyote Stitch
\$239



Marrakesh Express B180598
Mon. June 4 • 9 a.m. - 4 p.m. (1 hr break)
Patricia McDermott
Embroidery, Gluing or Adhesive, Multiple Stitches,
Peyote Stitch
\$244



Metal Morphosis Cuff with Cabochon B180446
Mon. June 4 • 9 a.m. - 4 p.m. (1 hr break)
Eva Sherman
Metalwork, Soldering
\$234



Miriam Necklace B180424
Mon. June 4 • 9 a.m. - 4 p.m. (1 hr break)
Kim Leahy
Peyote Stitch
\$194



Moon Artifact Necklace
Mon. June 4 • 8 a.m. - 4 p.m.
Kaska Firor & Katherine Firor
Metalwork, Wirework
\$288

B180595



My Sweet Sarah Kumihimo and Embellished Netting Choker
Mon. June 4 • 9 a.m. - 4 p.m. (1 hr break)
Cheryl Focht
Gluing or Adhesive, Kumihimo, Netting, Spiral Rope
\$239

B180764



Night Sky
Mon. June 4 • 9 a.m. - 4 p.m. (1 hr break)
Marcia Balonis
Multiple Stitches, Netting, Right-angle Weave
\$204

B180035



Northern Lights
Mon. June 4 • 9 a.m. - 4 p.m. (1 hr break)
Monica Han
Right-angle Weave
\$224

B180234



Nouveau Cuff Bracelet
Mon. June 4 • 9 a.m. - 4 p.m. (1 hr break)
Cary Borelli
Multiple Stitches, Ndebele Herringbone, Peyote Stitch
\$234

B180802



Now That's A Jig! Presents: Certification III
Mon. June 4 • 9 a.m. - 4 p.m. (1 hr break)
Brenda Schweder
Wirework, Metalwork
\$199

B181002



Octium Bracelet
Mon. June 4 • 9 a.m. - 4 p.m. (1 hr break)
Jayashree Paramesh
Multiple Stitches, Peyote Stitch, Right-angle Weave
\$239

B180290



Out on a Limb Necklace
Mon. June 4 • 9 a.m. - 4 p.m. (1 hr break)
Laura Zeiner
Brick Stitch, Embroidery, Gluing or Adhesive, Peyote Stitch, Wirework
\$214

B180390



Painting in the Abstract on Niobium
Mon. June 4 • 9 a.m. - 4 p.m. (1 hr break)
Marti Brown
Metalwork, Wirework
\$219

B180538



Pebble Cuff
Mon. June 4 • 8 a.m. - 4 p.m.
Robyn Cornelius
Metalwork
\$303

B180777



Potomac Bead Company Presents: Laura Bracelet
Mon. June 4 • 9 a.m. - 4 p.m. (1 hr break)
Monica Vinci
Fiber-related
\$239

B180433



Potomac Bead Company Presents: Poetry Soutache Brooch/Pendant
Mon. June 4 • 9 a.m. - 4 p.m. (1 hr break)
Julie Romero
Embroidery
\$249

B180584



Radiolarian Moth B180494
Mon. June 4 • 9 a.m. - 4 p.m. (1 hr break)
Anna Lindell
Multiple Stitches, Peyote Stitch
\$224



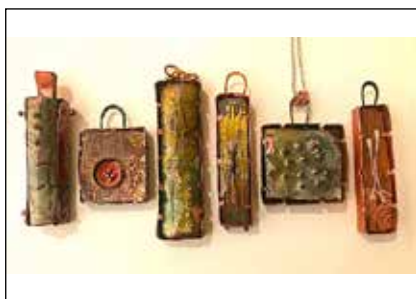
Resin with an Inner Glow B180231
Mon. June 4 • 9 a.m. - 4 p.m. (1 hr break)
Gail Crosman Moore
Gluing or Adhesive, Resin/Epoxy
\$199



Reversible Cosmos Tassel Necklace B180218
Mon. June 4 • 9 a.m. - 4 p.m. (1 hr break)
Leslie Venturoso
Fringe, Multiple Stitches, Peyote Stitch, Spiral Rope
\$274



Riffing on a Zipper B180485
Mon. June 4 • 9 a.m. - 4 p.m. (1 hr break)
Maria Richmond
Metalwork, Wirework
\$219



Shadow Boxes and Torch-Fire Enameling B180681
Mon. June 4 • 9 a.m. - 4 p.m. (1 hr break)
Mary Hettmansperger
Enamel, Metalwork, Wirework
\$219



Shadowbox Ring in Silver Clay B180585
Mon. June 4 • 9 a.m. - 4 p.m. (1 hr break)
Lyle Rayfield
Metal Clay
\$234



Spike the Baby Dragon B180333
Mon. June 4 • 9 a.m. - 4 p.m. (1 hr break)
Ralonda Patterson
Brick Stitch, Ndebele Herringbone, Peyote Stitch
\$229



Stonehinge II B180916
Mon. June 4 • 9 a.m. - 4 p.m. (1 hr break)
Kim St. Jean
Metalwork, Soldering
\$244



The Beaded Bowl: A Primer B180178
Mon. June 4 • 9 a.m. - 4 p.m. (1 hr break)
Ellen Solomons
Ndebele Herringbone, Peyote Stitch
\$209



Tidal Wave Bracelet B180624
Mon. June 4 • 8 a.m. - 4 p.m.
Sarah Thompson
Wirework
\$278



TOHO BEADS Presents: Flower Garden Necklace B180468
Mon. June 4 • 9 a.m. - 4 p.m. (1 hr break)
Hana Kochi
Bead Crochet, Beaded Flowers, Brick Stitch, Embroidery
\$214



Trabucco Canyon Cuff B180606
Mon. June 4 • 9 a.m. - 4 p.m. (1 hr break)
Leslee Frumin
Brick Stitch, Multiple Stitches, Ndebele Herringbone, Peyote Stitch, Right-angle Weave, Square Stitch
\$226



Train Track Beaded Textile Bracelet B180498
Mon. June 4 • 9 a.m. - 4 p.m. (1 hr break)
Kerrie Sue Miller
Fiber-related, Macramé
\$219



Twisted Wrap Bracelet and Ring B180055
Mon. June 4 • 9 a.m. - noon
Ronda Stevens
Wirework
\$129



Venetian Lace B180763
Mon. June 4 • 1 - 4 p.m.
Kim Rueth
Multiple Stitches
\$117



Water Nymph B180448
Mon. June 4 • 9 a.m. - 4 p.m. (1 hr break)
Beki Haley
Multiple Stitches
\$229



Winner, Winner Spinner Ring B180930
Mon. June 4 • 9 a.m. - 4 p.m. (1 hr break)
Phyllis Flora & Scott Mason
Metalwork, Soldering
\$229



Beaded Kumihimo Focal-Me Match-Me Magnetic Necklace B180067
Mon. June 4 • 6 - 9 p.m.
Yin Guang
Kumihimo
\$113



Bobby Beads Presents: The Charm of Autumn B180654
Mon. June 4 • 6 - 9 p.m.
Alexandra Sydorenko
Brick Stitch, Embroidery, Gluing or Adhesive, Multiple Stitches, Peyote Stitch
\$154



Buckle Ring B180928
Mon. June 4 • 6 - 9 p.m.
Phyllis Flora & Scott Mason
Metalwork
\$114



Cab-Set Niobium Pendant B180662
Mon. June 4 • 6 - 9 p.m.
Marti Brown
Metalwork
\$134



Chevrons B180266
Mon. June 4 • 6 - 9 p.m.
Sue Neel
Peyote Stitch, Wirework
\$114



Designing and Crocheting Your Bead Crochet Project B180574
Mon. June 4 • 5 - 9 p.m.
Candice Sexton
Bead Crochet
\$171



Inside-Out Ring: Locked Rocks B180738
Mon. June 4 • 6 - 9 p.m.
Chris Mode
Metalwork, Soldering
\$169



Jacobs Ladder Bracelet B180053
Mon. June 4 • 6 - 9 p.m.
Ronda Stevens
Wirework
\$129



Kumihimo Braided Bubble Bracelet B180623
Mon. June 4 • 6 - 9 p.m.
Teresa Huntley
Kumihimo
\$154



Lacewing Amphoras B180215
Mon. June 4 • 6 - 9 p.m.
Lynn Yuhr
Polymer
\$149



Midnight Sunset B180549
Mon. June 4 • 6 - 9 p.m.
Kim Leahy
Multiple Stitches
\$131



**Now That's a Jig! Presents:
A Murder of Crows** B180950
Mon. June 4 • 6 - 9 p.m.
Diane Hawkey
Wirework
\$139



**Now That's A Jig! Presents:
NTaJ! Top Sellers** B181004
Mon. June 4 • 6 - 9 p.m.
Brenda Schweder
Wirework, Metalwork
\$114



Pinnacle Bracelet B180840
Mon. June 4 • 6 - 9 p.m.
Cary Borelli
Multiple Stitches, Netting, Right-angle Weave
\$154



**Potomac Bead Company Presents:
Christmas Eve** B180491
Mon. June 4 • 6 - 9 p.m.
Jolanda Violante
Bead Crochet, Peyote Stitch
\$136



**Potomac Bead Company Presents:
Peacock Feather Earrings** B180429
Mon. June 4 • 6 - 9 p.m.
Monica Vinci
Embroidery, Multiple Stitches
\$159



Solar System Earrings B180901
Mon. June 4 • 6 - 9 p.m.
Kim St. Jean
Metalwork, Soldering, Wirework
\$139



Spinner Ring B180786
Mon. June 4 • 6 - 9 p.m.
Robyn Cornelius
Metalwork, Soldering
\$159



Pinnacle Bracelet B180840
Mon. June 4 • 6 - 9 p.m.
Cary Borelli
Multiple Stitches, Netting, Right-angle Weave
\$154



Sweet Floweret Pendant
Mon. June 4 • 6 - 9 p.m.
Renee Kovnesky
Multiple Stitches
\$127

B180394



Tangent Pendant
Mon. June 4 • 6 - 9 p.m.
Maria Richmond
Metalwork, Wirework
\$114

B180733



**TOHO BEADS Presents:
Shining Necklace**
Mon. June 4 • 6 - 9 p.m.
Emi Yamada
Spiral Rope
\$154

B180381



Unspoken Dreams Earrings
Mon. June 4 • 6 - 9 p.m.
Patricia McDermott
Embroidery, Gluing or Adhesive, Multiple Stitches
\$124

B180609



**We Remember:
Embossed Beaded Poppy**
Mon. June 4 • 6 - 9 p.m.
Naomi Smith
Embroidery, Multiple Stitches
\$134

B180999



When Montees Meet Chain Mail
Mon. June 4 • 6 - 9 p.m.
Monica Han
Chain Mail
\$129

B180237



**6-Striped Sparkle Ridged
Spiral Kumihimo Necklace**
Tue. June 5 • 9 a.m. - 4 p.m. (1 hr break)
Cheryl Focht
Gluing or Adhesive, Kumihimo
\$229

B180766



A Twisted Roman Necklace
Tue. June 5 • 9 a.m. - 4 p.m. (1 hr break)
Anne Mitchell
Metalwork, Soldering
\$289

B180969



Aphrodite Pendant
Tue. June 5 • 8 a.m. - 4 p.m.
Kaska Firor & Katherine Firor
Metalwork, Soldering, Wirework
\$287

B180530



Basic Wild Flower Lampwork Class
Tue. June 5 • 9 a.m. - 4 p.m. (1 hr break)
Karen Leonardo
Glass and Lampworking
\$239

B180070



Beaded Kumihimo Leaf Necklace
Tue. June 5 • 9 a.m. - noon
Yin Guang
Kumihimo
\$118

B180068



**Beaded Kumihimo Shell
and Pearl Necklace**
Tue. June 5 • 1 - 4 p.m.
Yin Guang
Kumihimo
\$118

B180228



Cascade Pendant

B180618

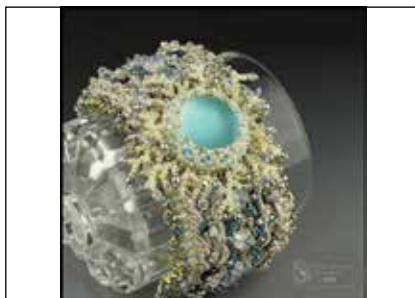
Tue. June 5 • 8 a.m. - 4 p.m.
Sarah Thompson
Wirework
\$243



Chroniker: Intro to Metalwork

B180291

Tue. June 5 • 1 - 4 p.m.
Kieu Pham Gray
Metalwork, Soldering
\$138



Coral Reef Bead Embroidered Cuff

B180459

Tue. June 5 • 9 a.m. - 4 p.m. (1 hr break)
Betty Stephan
Brick Stitch, Embroidery, Fringe, Gluing or
Adhesive, Multiple Stitches, Netting
\$239



Dacey Druzy

B180865

Tue. June 5 • 9 a.m. - 4 p.m. (1 hr break)
Laura Andrews
Peyote Stitch, Right-angle Weave
\$224



Diosa Necklace

B180285

Tue. June 5 • 9 a.m. - 4 p.m. (1 hr break)
Jayashree Paramesh
Multiple Stitches, Netting, Peyote Stitch
\$254



Exotic Leather Pendant

B180875

Tue. June 5 • 8 a.m. - 4 p.m.
Jill Erickson
Metalwork
\$238



Fancy Connections

B180293

Tue. June 5 • 8 a.m. - noon
Kieu Pham Gray
Metalwork, Soldering, Wirework
\$243



Faux Marcasite Bracelet

B180328

Tue. June 5 • 9 a.m. - 4 p.m. (1 hr break)
Diane Dennis
Ndebele Herringbone, Peyote Stitch
\$214



Fit to be Framed:

B180616

Silver Clay and Dichroic Glass
Tue. June 5 • 9 a.m. - 4 p.m. (1 hr break)
Lyle Rayfield
Metal Clay
\$234



Fob-ulous Lariat

B180844

Tue. June 5 • 9 a.m. - 4 p.m. (1 hr break)
Dana Rudolph
Multiple Stitches, Peyote Stitch, Spiral Rope,
Wirework
\$256



Fold Form Meets Enamel

B180924

Tue. June 5 • 9 a.m. - 4 p.m. (1 hr break)
Phyllis Flora
Enamel, Metalwork
\$204



Four Corners Bracelet

B180380

Tue. June 5 • 9 a.m. - 4 p.m. (1 hr break)
Leslee Frumin
Multiple Stitches, Ndebele Herringbone, Peyote
Stitch, Right-angle Weave, Square Stitch
\$206



Foxglove Necklace

Tue. June 5 • 8 a.m. - noon
Karen Bruns
Multiple Stitches
\$154

B180527



Hidden Message Hinged Pendant

Tue. June 5 • 9 a.m. - 4 p.m. (1 hr break)
Kim St. Jean
Etching, Metalwork
\$209

B180905



Jumble Branched Ndebele Bracelet

Tue. June 5 • 9 a.m. - 4 p.m. (1 hr break)
Nikia Angel
Ndebele Herringbone
\$224

B180190



Just Let Me Bead Presents:

Borgia Flower Pendant

Tue. June 5 • 9 a.m. - 4 p.m. (1 hr break)
Shona Bevan
Multiple Stitches, Right-angle Weave
\$234

B180210



Making a Point: Hollow Forms in Glass

Tue. June 5 • 9 a.m. - 4 p.m. (1 hr break)
Ed and Martha Biggar
Glass and Lampworking
\$304

B180781



Making an Impression

Tue. June 5 • 9 a.m. - 4 p.m. (1 hr break)
Marti Brown
Metalwork
\$244

B180622



Marigold Meadows Necklace

Tue. June 5 • 9 a.m. - 4 p.m. (1 hr break)
Agnieszka Watts
Ndebele Herringbone, Peyote Stitch, Right-angle Weave
\$218

B180028



Mastering the Rivet and Cold Connections with Silver Fusing, Reticulation and Patinas

Tue. June 5 • 9 a.m. - 4 p.m. (1 hr break)
Mary Hettmansperger
Metalwork, Wirework
\$225

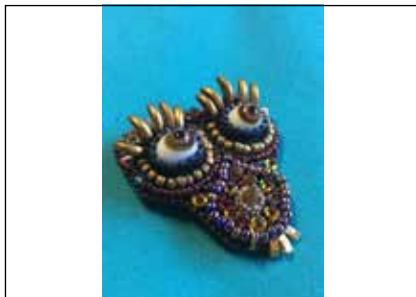
B180684



Metal Clay Boot Camp

Tue. June 5 • 9 a.m. - 4 p.m. (1 hr break)
Irina Miech
Metal Clay
\$254

B180278



Mini Monster Norton

Tue. June 5 • 1 - 4 p.m.
Karen Bruns
Embroidery
\$114

B180030



Monet's Garden

Tue. June 5 • 8 a.m. - 4 p.m.
Beki Haley
Multiple Stitches
\$295

B180432



Organic Vitality Bracelet

Tue. June 5 • 8 a.m. - 4 p.m.
Kim O'Neill
Etching, Metalwork
\$238

B180857



Painting with Seed Beads B180180
Tue. June 5 • 9 a.m. - 4 p.m. (1 hr break)
Ellen Solomons
Embroidery
\$194



Phoenix Rising Pendant B180086
Tue. June 5 • 9 a.m. - 4 p.m.; 6 - 9 p.m.
Lis-el Crowley
Metal Clay
\$314



Pillars of Athena B180036
Tue. June 5 • 9 a.m. - 4 p.m. (1 hr break)
Pamela Garbig
Embroidery, Gluing or Adhesive, Peyote Stitch
\$226



PJ Tool Jewelry Presents: B181907
Powder Coating Party!
Tue. June 5 • 9 a.m. - 4 p.m. (1 hr break)
Theresa D. Abelew & Annie Pennington
Metalwork, Wirework
\$219



Potomac Bead Company Presents: B180690
Gold Butterfly Brooch
Tue. June 5 • 9 a.m. - 4 p.m. (1 hr break)
Julie Romero
Embroidery
\$309



Rings-2-Rings with Bling B180441
Tue. June 5 • 8 a.m. - 4 p.m.
Eva Sherman
Metalwork, Soldering
\$273



Riveted Chain B180961
Tue. June 5 • 9 a.m. - 4 p.m. (1 hr break)
Gwen Youngblood
Metalwork, Wirework
\$214



Royal Treatment B180236
Tue. June 5 • 9 a.m. - 4 p.m. (1 hr break)
Monica Han
Kumihimo
\$209



Sand Cast Rings B180773
Tue. June 5 • 8 a.m. - 4 p.m.
Robyn Cornelius
Metalwork, Soldering
\$303



Showcase a Coin with Silver Metal Clay B180628
Tue. June 5 • 9 a.m. - 4 p.m. (1 hr break)
Patrice Baker
Lapidary, Metal Clay
\$264



Simple Complexity B180713
Tue. June 5 • 9 a.m. - 4 p.m. (1 hr break)
Patricia Larsen
Ndebele Herringbone, Peyote Stitch
\$329



Soldered Sterling Silver Box Pendant B180338
Tue. & Wed. June 5 & 6 • 9 a.m. - 4 p.m.;
9 a.m. - noon
Kay Rashka
Metalwork, Soldering, Wirework
\$299



Sparkle Daisy Bracelet B180502
Tue. June 5 • 9 a.m. - 4 p.m. (1 hr break)
Kerrie Sue Miller
Fiber-related, Macramé
\$214



Stacking Ring Sampler B180993
Tue. June 5 • 9 a.m. - 4 p.m. (1 hr break)
Michael Thee & Mary Wohlgemuth
Metalwork, Soldering
\$254



Stained Glass Bracelet B180019
Tue. June 5 • 9 a.m. - 4 p.m. (1 hr break)
Marcia Balonis
Multiple Stitches, Netting, Right-angle Weave
\$254



Tassellariat B180906
Tue. June 5 • 9 a.m. - 4 p.m. (1 hr break)
Diane Whiting
Fringe, Right-angle Weave
\$214



The BeadSmith Presents: Maitiki B180894
Tue. June 5 • 9 a.m. - 4 p.m. (1 hr break)
Natascha Bijl & Cora Sparidaans
Peyote Stitch, Right-angle Weave
\$259



The BeadSmith Presents: Scheherazade B180157
Tue. June 5 • 9 a.m. - 4 p.m. (1 hr break)
Helena Tang-Lim
Ndebele Herringbone, Peyote Stitch, Right-angle Weave
\$314



The Hannah Lariat B180219
Tue. June 5 • 9 a.m. - 4 p.m. (1 hr break)
Leslie Venturoso
Fringe, Multiple Stitches, Peyote Stitch, Right-angle Weave
\$259



TOHO BEADS Presents: 2 Way Jewel Watch Bracelet B180471
Tue. June 5 • 9 a.m. - 4 p.m. (1 hr break)
Hiroe Takagi
Fringe, Ndebele Herringbone, Peyote Stitch
\$231



TOHO BEADS Presents: Casablanca Lily B180801
Tue. June 5 • 9 a.m. - 4 p.m. (1 hr break)
Masako Kato & Hiroko Toda
Beaded Flowers, Multiple Stitches, Peyote Stitch, Wirework
\$229



TOHO BEADS Presents: Demi-licious Kumihimo Bracelet B180456
Tue. June 5 • 9 a.m. - 4 p.m. (1 hr break)
Bob Galivan
Fiber-related, Kumihimo
\$199



Translucent Jewelry: Light a Brooch B180229
Tue. June 5 • 9 a.m. - 4 p.m. (1 hr break)
Gail Crosman Moore
Ceramic/Porcelain/Raku, Gluing or Adhesive, Resin/Epoxy
\$189



Triangulations B180488
Tue. June 5 • 9 a.m. - 4 p.m. (1 hr break)
Maria Richmond
Metalwork, Wirework
\$189



Winter Rose B180409
Tue. June 5 • 9 a.m. - 4 p.m. (1 hr break)
Patricia Parker
Beaded Flowers, Brick Stitch, Multiple Stitches,
Ndebele Herringbone, Peyote Stitch, Square Stitch
\$204



Zentangle on Steroids B180566
Tue. June 5 • 9 a.m. - 4 p.m. (1 hr break)
Deborah Conti
Wirework
\$189



A Simple Elegance B180332
Tue. June 5 • 6 - 9 p.m.
Diane Dennis
Ndebele Herringbone, Peyote Stitch
\$174



Adjustable Button Pearl Ring B180897
Tue. June 5 • 6 - 9 p.m.
Kim St. Jean
Metalwork, Soldering
\$139



American Flag Kumihimo Bracelet B180655
Tue. June 5 • 6 - 9 p.m.
Teresa Huntley
Kumihimo
\$114



Beach Baby Earring Patina Workshop B180345
Tue. June 5 • 6 - 9 p.m.
Pamela Hawkins
Metalwork, Wirework
\$124



BeadFX Presents: Tia Collar B180076
Tue. June 5 • 6 - 9 p.m.
Carolyn Cave
Multiple Stitches, Netting, Right-angle Weave,
Metal Clay
\$129



BeCharmed Bracelet B180238
Tue. June 5 • 6 - 9 p.m.
Monica Han
Kumihimo
\$119



Boho Crochet B180115
Tue. June 5 • 6 - 9 p.m.
Shona Brooks
Multiple Stitches
\$111



BUMP Your Heart OUT B180672
Tue. June 5 • 6 - 9 p.m.
Chris Mode
Metalwork
\$143



Channeling Mondrian Pendant B180197
Tue. June 5 • 6 - 9 p.m.
Lynn Yuhr
Polymer
\$119



Dangerous Liaisons B180350
Tue. June 5 • 6 - 9 p.m.
Sue Neel
Gluing or Adhesive, Multiple Stitches, Peyote
Stitch, Square Stitch
\$124



Demi Medallions Necklace

Tue. June 5 • 6 - 9 p.m.

Cheryl Erickson

Peyote Stitch

\$144

B180712



Earthy Etched Paw Print Lampworked Beads

Tue. June 5 • 6 - 9 p.m.

Karen Leonardo

Glass and Lampworking

\$121

B180072



Eruption Bracelet

Tue. June 5 • 6 - 9 p.m.

Paulette Baron

Embroidery, Multiple Stitches, Peyote Stitch,

Right-angle Weave

\$60

B180740



Eye of the Machine Cuff Bracelet

Tue. June 5 • 6 - 9 p.m.

Cary Borelli

Multiple Stitches, Ndebele Herringbone, Netting,

Peyote Stitch, Right-angle Weave

\$179

B180841



Finders Keepers: Found Objects Bracelet

Tue. June 5 • 6 - 9 p.m.

Naomi Smith

Metalwork, Wirework

\$134

B180998



Future's Portals

Tue. June 5 • 6 - 9 p.m.

Marti Brown

Metalwork

\$144

B180651



Giovanna Necklace

Tue. June 5 • 6 - 9 p.m.

Dana Rudolph

Bead Stringing, Multiple Stitches, Right-angle

Weave, Wirework

\$158

B180843



Leather and Loom Bracelet

Tue. June 5 • 6 - 9 p.m.

Cindy Kinerson

Fiber-related, Loom

\$114

B180001



Lentil Flowers Bracelet

Tue. June 5 • 6 - 9 p.m.

Marcia Balonis

Multiple Stitches

\$134

B180064



Mixing Color with Metal Clay

Tue. June 5 • 6 - 9 p.m.

Ed and Martha Biggar

Metal Clay

\$179

B180658



Now That's a Jig! Presents: Mystic Necklace

Tue. June 5 • 6 - 9 p.m.

Diane Hawkey

Wirework

\$129

B180955



Orb Bauble

Tue. June 5 • 6 - 9 p.m.

Wendy Remmers

Chain Mail

\$129

B180812



Pearls Apart Ring

Tue. June 5 • 6 - 9 p.m.
Kieu Pham Gray
Metalwork, Soldering
\$153

B180307



Pebble Stack

Tue. June 5 • 6 - 9 p.m.
Robyn Cornelius
Metalwork
\$149

B180785



Phoenix Pendant

Tue. June 5 • 6 - 9 p.m.
Maria Richmond
Metalwork, Wirework
\$114

B180516



PJ Tool Jewelry Presents: Party After Dark! Glow-in-the-Dark Starburst Earrings

Tue. June 5 • 6 - 9 p.m.
Theresa D. Abelew & Annie Pennington
Metalwork, Wirework
\$129

B180184



Potomac Bead Company Presents: Enjoy Bracelet

Tue. June 5 • 6 - 9 p.m.
Monica Vinci
Multiple Stitches
\$159

B180428



Potomac Bead Company Presents: Ring a Ring O' Roses

Tue. June 5 • 5 - 9 p.m.
Jolanda Violante
Bead Crochet
\$196

B180676



Puzzle Me Not

Tue. June 5 • 6 - 9 p.m.
Deborah Conti
Metalwork, Wirework
\$99

B180560



Roller Print Earrings

Tue. June 5 • 6 - 9 p.m.
Phyllis Flora & Scott Mason
Metalwork
\$139

B180929



Simple Elegance Bracelet

Tue. June 5 • 6 - 9 p.m.
Ronda Stevens
Wirework
\$139

B180052



Single Stitch Bead Crochet

Tue. June 5 • 5 - 9 p.m.
Candice Sexton
Bead Crochet
\$174

B180562



Staggered Byzantine Bracelet

Tue. June 5 • 6 - 9 p.m.
Marilyn Gardiner
Chain Mail
\$141

B180137



The Gilded Lady

Tue. June 5 • 6 - 9 p.m.
Pamela Garbig
Embroidery, Gluing or Adhesive
\$134

B180038



TOHO BEADS Presents:

Bermuda Blue Brooch

Tue. June 5 • 6 - 9 p.m.
Megumi Saso
Peyote Stitch, Wirework
\$124

B180823



TOHO BEADS Presents:

Ribbon Flower Earrings

Tue. June 5 • 6 - 9 p.m.
Hiroe Takagi
Embroidery, Fringe, Multiple Stitches
\$129

B180475



Tree of Life Pendant

Tue. June 5 • 6 - 9 p.m.
Irina Mieh
Wirework
\$123

B180315



Tree of Life Ring

Tue. June 5 • 6 - 9 p.m.
Natalia Barker-Morrison
Wirework
\$129

B180674



Voyager Bracelet

Tue. June 5 • 5 - 9 p.m.
Kim Leahy
Embroidery, Gluing or Adhesive, Peyote Stitch
\$189

B180419



Wire-Woven Bead Ring

Tue. June 5 • 6 - 9 p.m.
Kaska Firor
Wirework
\$133

B180166



Woven Bookstone Bracelet

Tue. June 5 • 6 - 9 p.m.
Becky Guzman
Fiber-related, Multiple Stitches
\$133

B180393



You're My Sunflower Necklace

Tue. June 5 • 6 - 9 p.m.
Diane Fitzgerald
Peyote Stitch
\$119

B180141



A Moment in Time

Wed. June 6 • 9 a.m. - 4 p.m. (1 hr break)
Marcia Balonis
Embroidery, Ndebele Herringbone, Peyote Stitch
\$199

B180004



Art Nouveau Designs in Metal Clay

Wed. June 6 • 9 a.m. - 4 p.m.; 6 - 9 p.m.
Lis-el Crowley
Metal Clay
\$314

B180085



BeadFX Presents: Crescendo Bracelet

Wed. June 6 • 1 - 4 p.m.
Carolyn Cave
Multiple Stitches, Netting
\$129

B180082



**BeadFX Presents:
Sweet Lace Bracelet**

Wed. June 6 • 9 a.m. - noon
Carolyn Cave
Chain Mail, Multiple Stitches, Netting
\$119

B180083



Book Pendant B180861
Wed. June 6 • 9 a.m. - 4 p.m. (1 hr break)
Kim O'Neill
Etching, Metalwork, Wirework
\$194



Complex Twisted Cane in Soft Glass B180075
Wed. June 6 • 9 a.m. - 4 p.m. (1 hr break)
Patricia Larsen
Glass and Lampworking
\$227



Enamel in Detail B180294
Wed. June 6 • 1 - 4 p.m.
Kieu Pham Gray
Enamel, Metalwork
\$124



Enchanted Forest Rings B180279
Wed. June 6 • 9 a.m. - 4 p.m. (1 hr break)
Irina Miech
Metal Clay
\$234



Fantasy Flowers Pendant, Brooch, or Cuff B180227
Wed. June 6 • 9 a.m. - 4 p.m. (1 hr break)
Leslie Venturoso
Embroidery, Gluing or Adhesive, Multiple Stitches, Peyote Stitch
\$259



Filigree 101 B180297
Wed. June 6 • 8 a.m. - noon
Kieu Pham Gray
Metalwork, Soldering
\$225



Fine-Silver Barbed Wire Necklace B180968
Wed. June 6 • 9 a.m. - 4 p.m. (1 hr break)
Anne Mitchell
Metalwork, Soldering
\$304



Fused and Riveted B180960
Wed. June 6 • 9 a.m. - 4 p.m. (1 hr break)
Gwen Youngblood
Metalwork, Soldering
\$214



Gradating Elegance Necklace B180748
Wed. June 6 • 9 a.m. - 4 p.m. (1 hr break)
Paulette Baron
Embroidery, Peyote Stitch, Right-angle Weave
\$244



Heart of the Ocean Multi-Functional Bracelet/Necklace Combo B180535
Wed. June 6 • 9 a.m. - 4 p.m. (1 hr break)
Kinga Nichols
Embroidery, Multiple Stitches, Peyote Stitch, Right-angle Weave
\$259
BeadandButtonShow.com



Herringbone Intensive B180408
Wed. June 6 • 9 a.m. - 4 p.m. (1 hr break)
Glenda Paunonen
Ndebele Herringbone
\$209



Hey Picasso! Leno Braid B180458
Wed. June 6 • 9 a.m. - 4 p.m. (1 hr break)
Bob Galivan
Fiber-related, Kumihimo
\$209



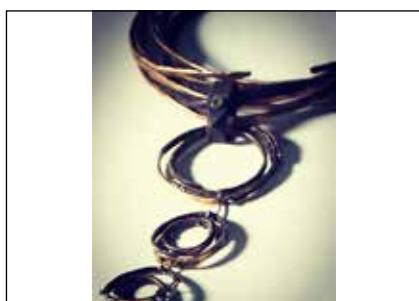
High Society B180902
Wed. June 6 • 9 a.m. - 4 p.m. (1 hr break)
Diane Whiting
Multiple Stitches, Right-angle Weave
\$229



Hinges, Books, and Lockets with Windows and Portholes B180686
Wed. June 6 • 9 a.m. - 4 p.m. (1 hr break)
Mary Hettmansperger
Metalwork, Wirework
\$214



It's Not Your Mother's Rabbit Foot B180522
Wed. June 6 • 9 a.m. - 4 p.m. (1 hr break)
Lyle Rayfield
Metal Clay, Metalwork
\$234



Jewelry Forms: Forging Wire + Leather B180987
Wed. June 6 • 9 a.m. - 4 p.m. (1 hr break)
Susan Lenart Kazmer
Metalwork, Wirework
\$204



Just Let Me Bead Presents: Revolution Necklace B180212
Wed. June 6 • 9 a.m. - 4 p.m. (1 hr break)
Shona Bevan
Multiple Stitches, Right-angle Weave
\$264



Kiln-Fired Enamel: Cabochon or Button - You Choose! B180984
Wed. June 6 • 8 a.m. - noon
Sherie Gage
Enamel, Metalwork
\$199



Kiln-Fired Enamel: Earrings or Earring Cabochons B180986
Wed. June 6 • 1 - 4 p.m.
Sherie Gage
Enamel, Metalwork
\$139



La Belleza de los Muertos B180971
Wed. June 6 • 9 a.m. - 4 p.m. (1 hr break)
Nancy Cain
Metalwork, Multiple Stitches, Peyote Stitch
\$249



Layered Colored Pencil Pin B180372
Wed. June 6 • 9 a.m. - 4 p.m. (1 hr break)
Mary Karg
Metalwork
\$194



Light and Shadow: The Art of Photographing Beads, Glass and Jewelry B180199
Wed. June 6 • 9 a.m. - 4 p.m. (1 hr break)
Doug Baldwin
Glass (other than Lampworking)
\$164



Lorelei Pendant B180627
Wed. June 6 • 9 a.m. - 4 p.m. (1 hr break)
Sarah Thompson
Wirework
\$209



Magnifique Necklace B180027
Wed. June 6 • 9 a.m. - 4 p.m. (1 hr break)
Amy Katz
Peyote Stitch, Right-angle Weave
\$284



Mixed Link Bracelet

B180591

Wed. June 6 • 8 a.m. - 4 p.m.
Kaska Firor
Metalwork, Wirework
\$273



Modularity

B180352

Wed. June 6 • 9 a.m. - 4 p.m. (1 hr break)
Sue Neel
Peyote Stitch, Wirework
\$204



Nunn Design and Apoxie

B180870

Sculpt Present: Posh Pendant and Earrings
Wed. June 6 • 1 - 4 p.m.
Jill Erickson
Resin/Epoxy
\$119



Opaque and Transparents:

B180230

Creating Subtle Color Shifts
Wed. June 6 • 9 a.m. - 4 p.m. (1 hr break)
Gail Crozman Moore
Gluing or Adhesive, Glass and Lampworking
\$249



Petticoat Cuff

B180509

Wed. June 6 • 9 a.m. - noon
Eva Sherman
Metalwork
\$129



Pipe and Drape

B180933

Wed. June 6 • 8 a.m. - noon
Scott Mason
Metalwork, Soldering, Wirework
\$214



PJ Tool Jewelry Presents:

B180182

Powder Coating Party!
Wed. June 6 • 9 a.m. - 4 p.m. (1 hr break)
Theresa D. Abelew & Annie Pennington
Metalwork, Wirework
\$219



Play with Fire

B180331

Wed. June 6 • 9 a.m. - 4 p.m. (1 hr break)
Diane Dennis
Peyote Stitch, Right-angle Weave
\$259



Princess Maya Pendant

B180187

Wed. June 6 • 9 a.m. - 4 p.m. (1 hr break)
Liz Thompson
Right-angle Weave
\$224



Quatrefoil Necklace

B180832

Wed. June 6 • 9 a.m. - 4 p.m. (1 hr break)
Dana Rudolph
Multiple Stitches, Ndebele Herringbone, Peyote
Stitch, Wirework
\$233



Resisting Developments

B180539

Wed. June 6 • 9 a.m. - 4 p.m. (1 hr break)
Marti Brown
Metalwork
\$234



Rivets: Cold Connections and More

B180125

Wed. June 6 • 9 a.m. - 4 p.m. (1 hr break)
Tracy Stanley
Metalwork, Wirework
\$214



Shadowbox Shibori Cuffs B180192
Wed. June 6 • 9 a.m. - 4 p.m. (1 hr break)
Nikia Angel
Embroidery, Multiple Stitches, Netting,
Peyote Stitch
\$254



Silverwing Pierced Pendant B180895
Wed. & Thu. June 6 & 7 • 9 a.m. - 4 p.m.;
8:30 a.m. - 3:30 p.m.
Michael Thee & Mary Wohlgemuth
Metalwork, Soldering
\$427



Starry Starry Night Bracelet B180884
Wed. June 6 • 9 a.m. - 4 p.m. (1 hr break)
Melanie Potter
Bead Stringing, Peyote Stitch
\$249



Sterling Feather Cuff B180909
Wed. June 6 • 9 a.m. - 4 p.m. (1 hr break)
Kim St. Jean
Metalwork, Soldering, Wirework
\$254



Stone-Set Rings B180922
Wed. June 6 • 1 - 4 p.m.
Phyllis Flora & Scott Mason
Metalwork, Soldering, Wirework
\$129



Sunburst Pendant Necklace B180346
Wed. June 6 • 9 a.m. - 4 p.m. (1 hr break)
Leslee Frumin
Multiple Stitches, Ndebele Herringbone, Netting,
Peyote Stitch, Right-angle Weave
\$236



The Beaded Doll: A Primer B180176
Wed. & Thu. June 6 & 7 • 9 a.m. - 4 p.m.;
8:30 a.m. - 3:30 p.m.
Ellen Solomons
Gluing or Adhesive, Multiple Stitches, Peyote Stitch
\$399



The BeadSmith Presents: Atlantis Necklace B180201
Wed. June 6 • 9 a.m. - 4 p.m. (1 hr break)
Isabella Lam
Ndebele Herringbone, Peyote Stitch, Right-angle
Weave, Spiral Rope
\$309



The BeadSmith Presents: Sophia B180889
Wed. June 6 • 9 a.m. - 4 p.m. (1 hr break)
Natascha Bijl & Cora Sparidaans
Fringe, Netting, Peyote Stitch, Right-angle Weave
\$239



The BeadSmith Presents: The Renaissance Cuff B180159
Wed. June 6 • 9 a.m. - 4 p.m. (1 hr break)
Helena Tang-Lim
Right-angle Weave
\$309



The BeadSmith Presents: Tiffany Pendant B180568
Wed. June 6 • 8 a.m. - 4 p.m.
Heather Kingsley-Heath
Fringe, Netting, Peyote Stitch, Square Stitch
\$268



The Big A Ring** B180943
Wed. June 6 • 9 a.m. - 4 p.m. (1 hr break)
Francesca Watson
Metalwork, Soldering
\$229



Three Stone Ring

Wed. June 6 • 1 - 4 p.m.
Eva Sherman
Metalwork, Soldering
\$134

B180523



**TOHO BEADS Presents:
Bermuda Blue Necklace**

Wed. June 6 • 9 a.m. - 4 p.m. (1 hr break)
Megumi Saso
Peyote, Stitch, Wirework
\$219

B180827



Wave Bangle Set

Wed. June 6 • 8 a.m. - 4 p.m.
Robyn Cornelius
Metalwork
\$293

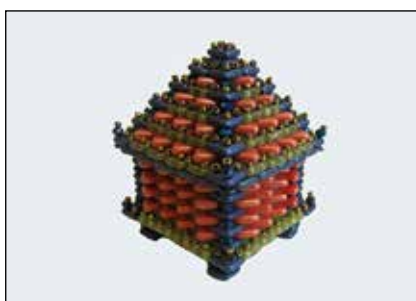
B180776



Zayandeh

Wed. June 6 • 8 a.m. - 4 p.m.
Beki Haley
Multiple Stitches
\$286

B180430



Ziggurat Box

Wed. June 6 • 9 a.m. - 4 p.m. (1 hr break)
Diane Fitzgerald
Peyote Stitch
\$199

B180139



Acadia Bracelet

Wed. June 6 • 5 - 9 p.m.
Allie Buchman
Multiple Stitches, Right-angle Weave,
Square Stitch
\$174

B180154



Bangalore

Wed. June 6 • 6 - 9 p.m.
Phyllis Flora & Scott Mason
Metalwork, Soldering
\$144

B180262



Bead Loom Basics

Wed. June 6 • 6 - 9 p.m.
Cindy Kinerson
Fiber-related, Gluing or Adhesive, Loom
\$114

B180217



Beaded Bookstone Bracelet

Wed. June 6 • 6 - 9 p.m.
Becky Guzman
Fiber-related, Multiple Stitches
\$133

B180399



Beaded Kumihimo Triple Wrap Bracelet

Wed. June 6 • 6 - 9 p.m.
Yin Guang
Kumihimo
\$108

B180066



BeadFX Presents: Windy Links Bracelet

Wed. June 6 • 6 - 9 p.m.
Carolyn Cave
Multiple Stitches, Netting
\$109

B180079



Bells of Ireland Necklace

Wed. June 6 • 6 - 9 p.m.
Diane Fitzgerald
Spiral Rope
\$144

B180143



Borosilicate Honey Dipper

Wed. June 6 • 6 - 9 p.m.
Lucas Clarke
Glass and Lampworking
\$164

B180834



Captured Treasures

Wed. June 6 • 6 - 9 p.m.
Deborah Conti
Metalwork, Wirework
\$104

B180557



Catalina Cuff Bracelet

Wed. June 6 • 6 - 9 p.m.
Cary Borelli
Multiple Stitches, Netting, Square Stitch
\$149

B180687



Coral Gardens in Silver

Wed. June 6 • 6 - 9 p.m.
Irina Miech
Metal Clay
\$162

B180287



Crown Jewels Necklace

Wed. June 6 • 6 - 9 p.m.
April Machan
Bead Stringing, Netting
\$134

B180097



Daisy Chain Pendant

Wed. June 6 • 6 - 9 p.m.
Eva Sherman
Metalwork, Soldering
\$144

B180504



Diamond Weave Ring

Wed. June 6 • 6 - 9 p.m.
Natalia Barker-Morrison
Basket Weaving, Wirework
\$134

B180678



Etched Sterling Silver Leather Bracelet

Wed. June 6 • 5 - 9 p.m.
Kim O'Neill
Etching, Metalwork
\$207

B180863



Fused Glass Cabochons

Wed. June 6 • 6 - 9 p.m.
Ed and Martha Biggar
Glass (other than Lampworking)
\$144

B180642



Harlequin Bracelet

Wed. June 6 • 6 - 9 p.m.
Ronda Stevens
Wirework
\$126

B180054



Heading in the Right Direction

Wed. June 6 • 6 - 9 p.m.
Chris Mode
Metalwork, Soldering
\$169

B180241



Hira-genji Leather Bracelet

Wed. June 6 • 6 - 9 p.m.
Bob Galivan
Fiber-related, Kumihimo
\$124

B180828



Introduction to Marble Making

Wed. June 6 • 6 - 9 p.m.

Frank Scott
Glass and Lampworking
\$129

B180392



Just Let Me Bead Presents: DuoCRAW Slinky Bracelet

Wed. June 6 • 6 - 9 p.m.

Shona Bevan
Multiple Stitches, Right-angle Weave
\$119

B180211



Knights Feast

Wed. June 6 • 6 - 9 p.m.

Deedee Skigen
Netting, Wirework
\$164

B180370



Knots and Fusion

Wed. June 6 • 6 - 9 p.m.

Heidi Mandich
Metalwork
\$139

B180703



Metal Finishing Techniques 101

Wed. June 6 • 5 - 9 p.m.

Kay Rashka
Metalwork
\$194

B180243



Mini Wave Ring

Wed. June 6 • 6 - 9 p.m.

Robyn Cornelius
Metalwork, Soldering
\$149

B180790



Moondance

Wed. June 6 • 6 - 9 p.m.

Maria Richmond
Metalwork, Wirework
\$114

B180517



Netted Stone Pendant

Wed. June 6 • 6 - 9 p.m.

Kaska Firor
Wirework
\$138

B180567



Parallel Cuff Bracelet

Wed. June 6 • 6 - 9 p.m.

Marilyn Gardiner
Chain Mail
\$139

B180135



Past Present Future Ring

Wed. June 6 • 6 - 9 p.m.

Michael Thee & Mary Wohlgemuth
Metalwork, Soldering
\$124

B180994



PJ Tool Jewelry Presents: Party After Dark! Glow-in-the-Dark Galaxy Pendant

Wed. June 6 • 6 - 9 p.m.

Theresa D. Abelew & Annie Pennington
Metalwork, Wirework
\$129

B180183



Posie Pendant

Wed. June 6 • 6 - 9 p.m.

Nancy Cain
Bead Stringing, Peyote Stitch
\$139

B180940



Potomac Bead Company Presents: B180486
Martina
 Wed. June 6 • 6 - 9 p.m.
 Monica Vinci
 Fiber-related
 \$184



Ride B180364
 Wed. June 6 • 6 - 9 p.m.
 Pamela Hawkins
 Embroidery, Gluing or Adhesive, Metalwork,
 Multiple Stitches
 \$129



Riveting Enamels B180308
 Wed. June 6 • 6 - 9 p.m.
 Kieu Pham Gray
 Enamel, Metalwork
 \$126



Sedona Sky Necklace B180292
 Wed. June 6 • 6 - 9 p.m.
 Jayashree Paramesh
 Multiple Stitches, Peyote Stitch
 \$119



Silver Cholla Pendant B180942
 Wed. June 6 • 6 - 9 p.m.
 Donna Lewis
 Metal Clay
 \$144



Snap to It! B180985
 Wed. June 6 • 5 - 9 p.m.
 Diane Hyde
 Embroidery, Gluing or Adhesive
 \$204



Spiraling Along Bracelet B180743
 Wed. June 6 • 6 - 9 p.m.
 Paulette Baron
 Right-angle Weave
 \$134



Sticks and Stones Earrings B180914
 Wed. June 6 • 6 - 9 p.m.
 Kim St. Jean
 Metalwork, Soldering
 \$139



Tassels: Fringe Fiber, Sticks, and Stones B180989
 Wed. June 6 • 6 - 9 p.m.
 Susan Lenart Kazmer
 Fiber-related, Gluing or Adhesive, Metalwork,
 Wirework
 \$129



Textured Borders Bracelet B180253
 Wed. June 6 • 6 - 9 p.m.
 Melissa Mauk Rodarte & Kelly Thompson
 Multiple Stitches
 \$101



The Carolyn Cuff B180845
 Wed. June 6 • 5 - 9 p.m.
 Dana Rudolph
 Gluing or Adhesive, Multiple Stitches, Peyote Stitch
 \$188



Three-Sided Right-Angle Weave with a Pinch B180349
 Wed. June 6 • 6 - 9 p.m.
 Doris Weinbaum
 Right-angle Weave
 \$114



TOHO BEADS Presents:
Basket Weave Wide Bracelet
Wed. June 6 • 6 - 9 p.m.
Kimie Suto
Basket Weaving, Ndebele Herringbone
\$134

B180798



Tryzantine Chain
Wed. June 6 • 6 - 9 p.m.
Wendy Remmers
Chain Mail
\$154

B180810



Twisted Puzzle Rope
Wed. June 6 • 6 - 9 p.m.
Cheryl Erickson
Multiple Stitches
\$109

B180723



Alchemy in Glass
Thu. June 7 • 8:30 a.m. - 3:30 p.m. (1 hr break)
Frank Scott
Glass and Lampworking
\$259

B180398



Arabesque Collection: Quatrefoil Cuff
Thu. June 7 • 8:30 a.m. - 3:30 p.m. (1 hr break)
Leslie Venturoso
Brick Stitch, Multiple Stitches, Netting,
Peyote Stitch, Right-angle Weave
\$259

B180224



Big Oval M Earrings with Polymer
Thu. June 7 • 8:30 a.m. - 3:30 p.m. (1 hr break)
Louise Fischer Cozzi
Polymer
\$176

B180327



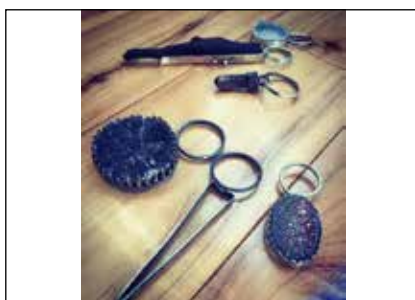
Borosilicate Mini Chandelier
Thu. June 7 • 8:30 a.m. - 3:30 p.m. (1 hr break)
Lucas Clarke
Glass and Lampworking
\$284

B180831



Branch Out!
Thu. June 7 • 8:30 - 11:30 a.m.
Irina Miech
Metal Clay
\$162

B180280



Building Bezels: Soldering and Setting Drusy and Hollow Forms
Thu. June 7 • 8:30 a.m. - 3:30 p.m. (1 hr break)
Susan Lenart Kazmer
Metalwork, Resin/Epoxy, Soldering, Wirework
\$209

B180988



C.Y.O.D. — Intro to Pick Soldering
Thu. June 7 • 8 a.m. - noon
Kieu Pham Gray
Metalwork, Soldering
\$224

B180304



Cathedral Window Cuff
Thu. June 7 • 12:30 - 3:30 p.m.
Cindy Kinerson
Fiber-related, Loom
\$114

B180003



Contemporary Earring Jackets
Thu. June 7 • 12:30 - 3:30 p.m.
Kieu Pham Gray
Metalwork, Soldering
\$144

B180296



Coral Reef Necklace B180023
Thu. June 7 • 8:30 a.m. - 3:30 p.m. (1 hr break)
Amy Katz
Ndebele Herringbone, Peyote Stitch,
Right-angle Weave
\$264



Cosmic Bangle B180612
Thu. June 7 • 8:30 a.m. - 3:30 p.m. (1 hr break)
Sarah Thompson
Wirework
\$204



Creative Photosh for Artists and Craftspeople B180200
Thu. June 7 • 8:30 a.m. - 3:30 p.m. (1 hr break)
Doug Baldwin
Glass (other than Lampworking)
\$164



Desert Moon Pendant B180048
Thu. June 7 • 8:30 - 11:30 a.m.
Cindy Kinerson
Brick Stitch, Embroidery, Fiber-related, Gluing or
Adhesive, Multiple Stitches, Peyote Stitch
\$122



Eclipse Necklace B180344
Thu. June 7 • 8:30 a.m. - 3:30 p.m. (1 hr break)
Leslee Frumin
Multiple Stitches, Ndebele Herringbone, Netting,
Peyote Stitch, Right-angle Weave
\$239



Enameled Wave Bangle B180780
Thu. June 7 • 8 a.m. - 4 p.m.
Robyn Cornelius
Metalwork
\$283



Fairy Garden B180387
Thu. June 7 • 8:30 a.m. - 3:30 p.m. (1 hr break)
Glenda Paunonen
Multiple Stitches, Peyote Stitch
\$259



Fine Tune Your Soldering Skills B180244
Thu. June 7 • 8:30 a.m. - 3:30 p.m. (1 hr break)
Kay Rashka
Metalwork, Soldering
\$194



Finger Bangles B180921
Thu. June 7 • 12:30 - 3:30 p.m.
Phyllis Flora & Scott Mason
Metalwork, Soldering, Wirework
\$124



Finger Weaving — No It's Not Viking Knit B180932
Thu. June 7 • 8:30 - 11:30 a.m.
Scott Mason
Wirework
\$124



Four Seasons B180938
Thu. June 7 • 8:30 a.m. - 3:30 p.m. (1 hr break)
Nancy Cain
Fringe, Netting, Peyote Stitch
\$274



Framed Art Blossoms Necklace B180303
Thu. June 7 • 8:30 a.m. - 3:30 p.m. (1 hr break)
Cindy Holsclaw
Multiple Stitches, Netting, Peyote Stitch,
Right-angle Weave
\$224



Glittering Firefly Brooch/Pendant B180247
Thu. June 7 • 8:30 a.m. - 3:30 p.m. (1 hr break)
Megan Savors
Brick Stitch, Embroidery, Fiber-related, Gluing or Adhesive, Peyote Stitch, Wirework
\$214



Icon Necklace B180546
Thu. June 7 • 8:30 a.m. - 3:30 p.m. (1 hr break)
Sherry Serafini
Embroidery, Gluing or Adhesive
\$254



Inverted Spiral Bracelet B180132
Thu. June 7 • 12:30 - 3:30 p.m.
Marilyn Gardiner
Chain Mail
\$125



Jump Rings with Bling B180508
Thu. June 7 • 8:30 - 11:30 a.m.
Eva Sherman
Metalwork, Soldering
\$144



Just Let Me Bead Presents: CRAW Donut Pendant B180209
Thu. June 7 • 8:30 a.m. - 3:30 p.m. (1 hr break)
Shona Bevan
Multiple Stitches, Right-angle Weave
\$239



Layered and Riveted B180958
Thu. June 7 • 8:30 a.m. - 3:30 p.m. (1 hr break)
Gwen Youngblood
Metalwork, Wirework
\$227



Layered Colored Pencil Pendant with Pearl B180371
Thu. June 7 • 8:30 a.m. - 3:30 p.m. (1 hr break)
Mary Karg
Metalwork
\$199



Layers, Dimension, Alternative Metals, and Cold Connections B180682
Thu. June 7 • 8:30 a.m. - 3:30 p.m. (1 hr break)
Mary Hettmansperger
Basket Weaving, Metalwork, Wirework
\$221



Leaves, Vines, and Tendrils B180281
Thu. June 7 • 12:30 - 3:30 p.m.
Irina Miech
Metal Clay
\$162



Let's Color It! B180140
Thu. June 7 • 8:30 a.m. - 3:30 p.m. (1 hr break)
Tracy Stanley
Metalwork
\$199



Mandragora Bracelet B180534
Thu. June 7 • 8:30 a.m. - 3:30 p.m. (1 hr break)
Kinga Nichols
Embroidery, Gluing or Adhesive, Peyote Stitch
\$269



Metal Clay Findings: Toggles, Caps, Cones, and More B180515
Thu. June 7 • 8:30 a.m. - 3:30 p.m. (1 hr break)
Lyle Rayfield
Metal Clay
\$239



Nejire Edo-yatsu Braid B180482
Thu. June 7 • 8:30 a.m. - 3:30 p.m. (1 hr break)
Bob Galivan
Fiber-related, Kumihimo
\$204



Nightingale Necklace B180414
Thu. June 7 • 8:30 a.m. - 3:30 p.m. (1 hr break)
Betty Stephan
Brick Stitch, Embroidery, Multiple Stitches,
Ndebele Herringbone, Peyote Stitch
\$239



Nunn Design and Apoxie Sculpt Present: Luxe Ring and Hoops B180874
Thu. June 7 • 1 - 4 p.m.
Jill Erickson
Resin/Epoxy
\$119



Organic Metal Clay Pod B180091
Thu. June 7 • 8 a.m. - 4 p.m.
Lis-el Crowley
Metal Clay
\$283



Out on a (Glass) Limb: Introduction to Sculpting Glass Birds B180043
Thu. June 7 • 8:30 a.m. - 3:30 p.m. (1 hr break)
Andrew Pollack
Glass and Lampworking
\$239



Parawire and Apoxie Sculpt Present: Infinity Ombre Pendant B180876
Thu. June 7 • 8 a.m. - noon
Jill Erickson
Resin/Epoxy, Wirework
\$149



Pendant with a Touch of Gold B180696
Thu. June 7 • 8:30 - 11:30 a.m.
Heidi Mandich
Metalwork, Soldering
\$139



PMC Moroccan Pendant B180449
Thu. June 7 • 8:30 a.m. - 3:30 p.m. (1 hr break)
Cristina Leonard
Metal Clay
\$194



Purple Ginkgo Leaf Necklace B180144
Thu. June 7 • 8:30 a.m. - 3:30 p.m. (1 hr break)
Diane Fitzgerald
Brick Stitch
\$249



Queen's Lace Necklace B180805
Thu. June 7 • 8:30 a.m. - 3:30 p.m. (1 hr break)
Wendy Remmers
Chain Mail
\$314



Rings That Swing B180976
Thu. June 7 • 8:30 a.m. - 3:30 p.m. (1 hr break)
Julie Sanford
Metalwork, Soldering
\$234



San Clemente Links B180170
Thu. June 7 • 8:30 - 11:30 a.m.
Doris Weinbaum
Peyote Stitch
\$124



Stone Garden Cuff

Thu. June 7 • 12:30 - 3:30 p.m.

Eva Sherman
Metalwork, Soldering
\$159

B180454



Tab Ribbed Stone Cuff

Thu. June 7 • 8:30 a.m. - 3:30 p.m. (1 hr break)

Anne Mitchell
Metalwork, Soldering
\$309

B180967



That's a Wrap

Thu. June 7 • 8:30 a.m. - 3:30 p.m. (1 hr break)

Kim St. Jean
Metalwork, Soldering
\$234

B180911

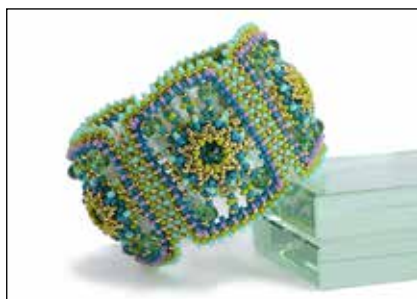


The Argentium Road to Rome

Thu. June 7 • 12:30 - 3:30 p.m.

Heidi Mandich
Metalwork
\$139

B180704



The BeadSmith Presents: Carousel Bracelet

Thu. June 7 • 8:30 a.m. - 3:30 p.m. (1 hr break)

Heather Kingsley-Heath
Fringe, Peyote Stitch, Right-angle Weave
\$232

B180563



The BeadSmith Presents: Mary Rose

Thu. June 7 • 8:30 a.m. - 3:30 p.m. (1 hr break)

Natascha Bijl & Cora Sparidaans
Fringe, Netting, Peyote Stitch, Right-angle Weave
\$259

B180891



The BeadSmith Presents: The Amphora

Thu. June 7 • 8:30 a.m. - 3:30 p.m. (1 hr break)

Helena Tang-Lim
Fringe, Ndebele Herringbone, Right-angle Weave, Spiral Rope
\$304

B180158



The Letty Ring

Thu. June 7 • 8:30 a.m. - 3:30 p.m. (1 hr break)

Francesca Watson
Metalwork, Soldering
\$234

B180945



The Show Stopper: Beaded Kumihimo

Thu. June 7 • 8:30 a.m. - 3:30 p.m. (1 hr break)

Rebecca Combs
Kumihimo
\$254

B180547



TOHO BEADS Presents: Swirling Soutache Cuff

Thu. June 7 • 8:30 a.m. - 3:30 p.m. (1 hr break)

Megumi Saso
Brick Stitch, Embroidery, Peyote Stitch
\$219

B180822



Tribal Pendant and Handmade Chain

Thu. June 7 • 8:30 a.m. - 3:30 p.m. (1 hr break)

Kim O'Neill
Etching, Metalwork, Soldering
Wirework
\$194

B180856



Twist Bracelet

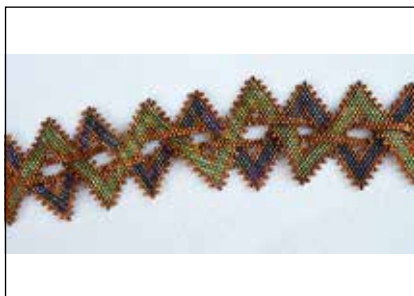
Thu. June 7 • 8:30 a.m. - 3:30 p.m. (1 hr break)

Kaska Firor
Wirework
\$239

B180597



Tzarina Pendant B180188
Thu. June 7 • 8:30 a.m. - 3:30 p.m. (1 hr break)
Liz Thompson
Embroidery, Right-angle Weave
\$214



Woven B180353
Thu. June 7 • 8:30 a.m. - 3:30 p.m. (1 hr break)
Sue Neel
Peyote Stitch
\$204



3-D Pendant B180896
Fri. June 8 • 9 a.m. - 4 p.m. (1 hr break)
Kim St. Jean
Metalwork
\$204



A Bevy of Silk Screened Bangles B180318
Fri. June 8 • 9 a.m. - 4 p.m. (1 hr break)
Louise Fischer Cozzi
Polymer
\$189



A Day of Earrings B180165
Fri. June 8 • 9 a.m. - 4 p.m. (1 hr break)
Tracy Stanley
Chain Mail, Metalwork, Wirework
\$224



Andean Simp'a Wallqa B180531
Fri. June 8 • 9 a.m. - 4 p.m. (1 hr break)
Bob Galivan
Fiber-related, Kumihimo
\$204



Aries Pendant B180630
Fri. June 8 • 8 a.m. - 4 p.m.
Sarah Thompson
Wirework
\$265



Baroque Bars Chain Mail Bracelet B180600
Fri. June 8 • 1 - 4 p.m.
Michelle Brennan
Chain Mail, Wirework
\$139



Bezels and Borders B180959
Fri. June 8 • 9 a.m. - 4 p.m. (1 hr break)
Gwen Youngblood
Metalwork, Soldering
\$221



Borosilicate Deluxe Miniature Chandelier B180833
Fri. & Sat. June 8 & 9 • 9 a.m. - 4 p.m. (1 hr break)
Lucas Clarke
Glass and Lampworking
\$509



Chenille Workshop B180752
Fri. June 8 • 8 a.m. - 4 p.m.
Cheryl Erickson
Multiple Stitches
\$325



Coil Cuff B180779
Fri. June 8 • 8 a.m. - 4 p.m.
Robyn Cornelius
Metalwork
\$293



Cold Enamel: Color + Resin on Metal B180992
Fri. June 8 • 9 a.m. - 4 p.m. (1 hr break)
Susan Lenart Kazmer
Metalwork, Resin/Epoxy,
Wirework
\$204



Crystal Canyon Cuff B180034
Fri. June 8 • 1 - 4 p.m.
Cindy Kinerson
Basket Weaving, Fiber-related, Gluing or Adhesive
Loom
\$119



Dionysus Descending Necklace B180161
Fri. June 8 • 8 a.m. - noon
Mary Soucy
Chain Mail
\$215



Discover Torch Enameling: The Luminaria Pendant B180855
Fri. June 8 • 9 a.m. - 4 p.m. (1 hr break)
Steven James
Enamel, Metalwork, Etching, Soldering, Wirework
\$229



Don't Cry Over CRAW and PRAW B180483
Fri. June 8 • 9 a.m. - 4 p.m. (1 hr break)
Adele Kimpell
Right-angle Weave
\$214



Double Vision Bracelet B180024
Fri. June 8 • 9 a.m. - 4 p.m. (1 hr break)
Amy Katz
Embroidery, Ndebele Herringbone, Peyote Stitch
Right-angle Weave
\$284



Drops and Dangles B180948
Fri. June 8 • 9 a.m. - 4 p.m. (1 hr break)
Julie Picarello
Polymer, Wirework
\$178



Emergence Necklace B180012
Fri. June 8 • 9 a.m. - 4 p.m. (1 hr break)
Francie Broadie
Multiple Stitches, Ndebele Herringbone, Peyote
Stitch, Right-angle Weave
\$194



Estrelado B180789
Fri. June 8 • 9 a.m. - noon
Charlene Abrams
Multiple Stitches, Netting, Right-angle Weave
\$129



Fifty Shades of Pai (sley) B180871
Fri. June 8 • 9 a.m. - 4 p.m. (1 hr break)
Amea K. Sweet-McNamara
Fiber-related, Gluing or Adhesive
\$239



Flora Exotica Necklace B180283
Fri. June 8 • 9 a.m. - 4 p.m. (1 hr break)
Jayashree Paramesh
Multiple Stitches, Ndebele Herringbone,
Peyote Stitch
\$239



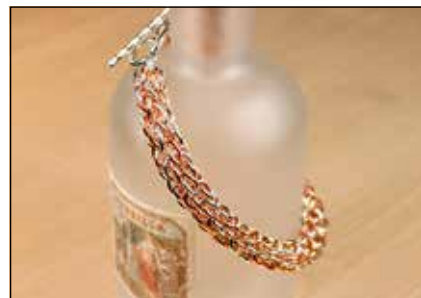
Florentine Necklace B180722
Fri. June 8 • 9 a.m. - 4 p.m. (1 hr break)
Virginia Blakelock
Fringe, Ndebele Herringbone, Netting, Peyote
Stitch
\$249



Flying Five Wing Cocktail Ring B180074
Fri. June 8 • 9 a.m. - 4 p.m. (1 hr break)
Kim Van Antwerp
Peyote Stitch, Right-angle Weave
\$209



Fold Form Reinforced Rivet and Hinge Cuff B180965
Fri. June 8 • 9 a.m. - 4 p.m. (1 hr break)
Anne Mitchell
Metalwork, Soldering
\$294



Foxtail Rope B180807
Fri. June 8 • 1 - 4 p.m.
Wendy Remmers
Chain Mail
\$159



Freshwater Pearl Carving Techniques B180233
Fri. June 8 • 9 a.m. - 4 p.m. (1 hr break)
Betsy Lehndorff
Lapidary
\$239



Garden Cuff B180944
Fri. June 8 • 9 a.m. - 4 p.m. (1 hr break)
Francesca Watson
Metalwork, Soldering
\$244



Get Crowned! B180186
Fri. June 8 • 9 a.m. - 4 p.m. (1 hr break)
Liz Thompson
Embroidery, Gluing or Adhesive, Multiple Stitches
\$239



Gypsy Woman Cuff B180518
Fri. June 8 • 1 - 4 p.m.
Eva Sherman
Metalwork
\$129



Hand-Forged Necklace with Metal Clay Embellishments B180639
Fri. June 8 • 9 a.m. - 4 p.m. (1 hr break)
Ed and Martha Biggar
Metal Clay, Metalwork, Wirework
\$254



Heartful Home B180927
Fri. June 8 • 8 a.m. - noon
Phyllis Flora
Enamel, Metalwork
\$204



Intermediate Marble Designs B180395
Fri. June 8 • 9 a.m. - 4 p.m. (1 hr break)
Frank Scott
Glass and Lampworking
\$249



Introduction to Blowing Glass for the Beadmaker: Ornaments and Small Vessels B180045
Fri. June 8 • 9 a.m. - 4 p.m. (1 hr break)
Andrew Pollack
Glass and Lampworking
\$239



Introduction to Metal Clay B180264
Fri. June 8 • 9 a.m. - noon
Irina Mich
Metal Clay
\$159



Jewel Beetle Necklace B180256
Fri. June 8 • 9 a.m. - 4 p.m. (1 hr break)
Megan Savors
Bead Stringing, Brick Stitch, Embroidery,
Gluing or Adhesive, Multiple Stitches, Ndebele
Herringbone, Peyote Stitch, Right-angle Weave
\$239



Killian B180783
Fri. June 8 • 1 - 5 p.m.
Charlene Abrams
Multiple Stitches, Ndebele Herringbone,
Right-angle Weave
\$184



Kumihimo Marudai Fundamentals B180920
Fri. & Sat. June 8 & 9 • 8 a.m. - 4 p.m.
Adrienne Gaskell
Kumihimo
\$465



Lattice Necklace B180596
Fri. June 8 • 9 a.m. - noon
Michelle Brennan
Chain Mail
\$154



Luna Triptych Necklace B180610
Fri. June 8 • 9 a.m. - 4 p.m. (1 hr break)
Carol Cypher
Fringe, Multiple Stitches, Ndebele Herringbone,
Netting, Right-angle Weave
\$194



Mantra Pendant with Beaded Cord B180858
Fri. June 8 • 1 - 4 p.m.
Kim O'Neill
Etching, Metalwork
\$122



Melisandre: The Red Witch Collection B180265
Fri. June 8 • 9 a.m. - 4 p.m. (1 hr break)
Sue Neel
Multiple Stitches, Peyote Stitch, Right-angle
Weave
\$204



Nature's Elements in Silver B180284
Fri. June 8 • 1 - 4 p.m.
Irina Miech
Metal Clay
\$162



Novveau Scrolls Necklace B180550
Fri. June 8 • 9 a.m. - 4 p.m. (1 hr break)
Kaska Firor & Mary Karg
Wirework
\$209



Playing with Fire B180519
Fri. June 8 • 9 a.m. - noon
Eva Sherman
Metalwork
\$129



PMC Vintage Ethnic Pendant and Earrings B180489
Fri. June 8 • 9 a.m. - 4 p.m. (1 hr break)
Cristina Leonard & Gail Lannum
Metal Clay
\$194



Practice Makes Perfect: Soldering Workout B180299
Fri. June 8 • 9 a.m. - 4 p.m. (1 hr break)
Kieu Pham Gray
Metalwork, Soldering
\$214



Prism Flower Bracelet B180782
Fri. June 8 • 9 a.m. - 4 p.m. (1 hr break)
Melissa Grakowsky Shippee
Multiple Stitches, Ndebele Herringbone, Netting,
Peyote Stitch
\$204



Pumpkin Box: A Peyote Beaded Vessel B180179
Fri. June 8 • 9 a.m. - 4 p.m. (1 hr break)
Ellen Solomons
Peyote Stitch
\$184



Recycling Silver B180978
Fri. June 8 • 9 a.m. - 4 p.m. (1 hr break)
Julie Sanford
Metalwork
\$229



Right-Angle Weave Intensive B180400
Fri. June 8 • 9 a.m. - 4 p.m. (1 hr break)
Glenda Paunonen
Right-angle Weave
\$209



Silver Riveted Link Bracelet B180588
Fri. June 8 • 8 a.m. - 4 p.m.
Kay Rashka
Metalwork, Wirework
\$268



Simple Soldering Boot Camp B180974
Fri. June 8 • 9 a.m. - 4 p.m. (1 hr break)
Kate Richbourg
Metalwork, Soldering
\$199



Southwestern Wrap Bracelets B180002
Fri. June 8 • 9 a.m. - noon
Cindy Kinerson
Fiber-related, Loom
\$114



Step Up Your Bezels: Raised Bezel Ring B180995
Fri. June 8 • 9 a.m. - 4 p.m. (1 hr break)
Michael Thee & Mary Wohlgemuth
Metalwork, Soldering
\$254



The BeadSmith Presents: Giselle B180890
Fri. June 8 • 9 a.m. - 4 p.m. (1 hr break)
Natascha Bijl & Cora Sparidaans
Peyote Stitch, Right-angle Weave
\$239



The BeadSmith Presents: Grace Bracelet B180571
Fri. June 8 • 9 a.m. - 4 p.m. (1 hr break)
Heather Kingsley-Heath
Fringe, Netting, Right-angle Weave
\$212



The BeadSmith Presents: Phoenix B180720
Fri. June 8 • 9 a.m. - 4 p.m. (1 hr break)
Fran Griffith
Multiple Stitches, Peyote Stitch, Ndebele
Herringbone
\$294



Thinking Outside the Box: Etched, Squared, and Blinged Unusual Jewelry B180864
Fri. June 8 • 8 a.m. - noon
Kim O'Neill
Etching, Metalwork, Wirework
\$204



TOHO BEADS Presents: B180806
Cornucopia Brooch
 Fri. June 8 • 9 a.m. - noon
 Yuko Shiba
 Bead Crochet
 \$124



TOHO BEADS Presents: Rasen B180797
 Fri. June 8 • 1 - 4 p.m.
 Kimie Suto
 Multiple Stitches
 \$119



Twisty Starfish Necklace B180301
 Fri. June 8 • 9 a.m. - 4 p.m. (1 hr break)
 Cindy Holsclaw
 Multiple Stitches, Right-angle Weave
 \$233



Wheelwright Earring B180926
 Fri. June 8 • 1 - 4 p.m.
 Phyllis Flora
 Enamel, Metalwork, Wirework
 \$124



Wild Thing Cuff B180490
 Fri. June 8 • 9 a.m. - 4 p.m. (1 hr break)
 Sherry Serafini
 Brick Stitch, Embroidery, Gluing or Adhesive,
 Peyote Stitch
 \$292



3-D Lizard Pin B180634
 Sat. June 9 • 9 a.m. - 4 p.m. (1 hr break)
 Jennifer Shibona
 Embroidery, Gluing or Adhesive
 \$219



8-Strand Chevron Braided Bracelet B180124
 Sat. June 9 • 1 - 4 p.m.
 Katherine Buenger
 Wirework
 \$119



Advanced Pearl Carving B180252
 Sat. June 9 • 9 a.m. - 4 p.m. (1 hr break)
 Betsy Lehnorff
 Gluing or Adhesive, Lapidary
 \$229



Angular Chain B180883
 Sat. June 9 • 9 a.m. - noon
 Melanie Potter
 Bead Stringing, Peyote Stitch
 \$138



Angular Earrings B180885
 Sat. June 9 • 1 - 4 p.m.
 Melanie Potter
 Peyote Stitch
 \$128



Apostrophe Necklace with Polymer B180322
 Sat. June 9 • 9 a.m. - 4 p.m. (1 hr break)
 Louise Fischer Cozzi
 Polymer
 \$184



Barn Rings B180923
 Sat. June 9 • 1 - 4 p.m.
 Phyllis Flora
 Metalwork, Wirework
 \$114



**Building Objects in Resin:
Casting Resin**

Sat. June 9 • 9 a.m. - noon
Susan Lenart Kazmer
Resin/Epoxy
\$119

B180991



Color Study Wrap Bracelet

Sat. June 9 • 9 a.m. - 4 p.m. (1 hr break)
Kate Richbourg & Janice Parsons
Bead Stringing, Macramé
\$249

B180972



**Colorful Metal:
Easy Painting with Alcohol Inks**

Sat. June 9 • 1 - 4 p.m.
Lori Thomas
Metalwork
\$111

B180357



Deconstructed Bracelets

Sat. June 9 • 8 a.m. - 4 p.m.
Robyn Cornelius
Metalwork
\$333

B180774



Discover Torch Enameling

Sat. June 9 • 9 a.m. - 4 p.m. (1 hr break)
Steven James
Enamel
\$219

B180975



Dots-Dots-Dots

Sat. June 9 • 9 a.m. - 4 p.m. (1 hr break)
Frank Scott
Glass and Lampworking
\$274

B180396



Embossed Enamels

Sat. June 9 • 1 - 4 p.m.
Kieu Pham Gray
Enamel, Metalwork
\$126

B180295



Enchanted Sorceress Necklace

Sat. June 9 • 9 a.m. - 4 p.m. (1 hr break)
Patty Tiry
Multiple Stitches, Netting, Right-angle Weave
\$204

B180576



Essential Kumihimo

Sat. June 9 • 9 a.m. - noon
Rebecca Combs
Kumihimo
\$139

B180551



Etched Earrings

Sat. June 9 • 8 a.m. - noon
Kim O'Neill
Etching, Metalwork, Wirework
\$199

B180859



Etched Sterling Saddle Ring

Sat. June 9 • 1 - 4 p.m.
Kim O'Neill
Etching, Metalwork, Soldering
\$129

B180862



**Fire Mountain Gems and Beads Present:
Mother's Day Ribbon Embroidery Design**

Sat. June 9 • 9 a.m. - 4 p.m. (1 hr break)
Tatiana Popova
Embroidery
\$207

B180109



Flowers for Pondo B180177
Sat. June 9 • 9 a.m. - 4 p.m. (1 hr break)
Ellen Solomons
Brick Stitch, Right-angle Weave, Square Stitch,
Metalwork
\$289



Focus on Focals B180947
Sat. June 9 • 9 a.m. - 4 p.m. (1 hr break)
Julie Picarello
Polymer, Resin/Epoxy
\$176



For Cleopatra: Serpent of the Nile B180240
Sat. June 9 • 9 a.m. - noon
Carol Cypher
Fiber-related, Fringe, Peyote Stitch, Right-angle
Weave, Square Stitch
\$119



Groovy Cuff and Pendant B180510
Sat. June 9 • 9 a.m. - noon
Eva Sherman
Polymer
\$129



Heavenly Bodies B180378
Sat. June 9 • 9 a.m. - 4 p.m. (1 hr break)
Eva Rushton
Multiple Stitches, Peyote Stitch, Right-angle Weave
\$234



Hollow Forms in EZ960 Clay B180660
Sat. June 9 • 1 - 4 p.m.
Ed and Martha Biggar
Metal Clay
\$189



In Full Bloom Chain Mail Pendant B180602
Sat. June 9 • 1 - 4 p.m.
Michelle Brennan
Chain Mail
\$124



**Introduction to Blowing Glass
for the Beadmaker: Blown Glass Birds** B180046
Sat. June 9 • 9 a.m. - 4 p.m. (1 hr break)
Andrew Pollack
Glass and Lampworking
\$239



Keystone Weave B180768
Sat. June 9 • 9 a.m. - 4 p.m. (1 hr break)
Wendy Remmers
Chain Mail
\$314



**Layering Transparents:
Foil, Tints, and Imagery in Resin** B180990
Sat. June 9 • 1 - 4 p.m.
Susan Lenart Kazmer
Resin/Epoxy
\$114



Leaves, Vines, and Tendrils B180282
Sat. June 9 • 9 a.m. - noon
Irina Miech
Metal Clay
\$162



Lovin' Leather Bracelet B180913
Sat. June 9 • 9 a.m. - 4 p.m. (1 hr break)
Kim St. Jean
Metalwork, Soldering
\$244



Lucky Penny Pendant Necklace B180758
Sat. June 9 • 9 a.m. - 4 p.m. (1 hr break)
Diane Hyde
Embroidery, Gluing or Adhesive
\$289



Metal Clay For Metalsmiths: Casting Sticks and Succulents B180983
Sat. June 9 • 8 a.m. - noon
Julie Sanford
Metal Clay, Metalwork
\$234



Metal Morphosis Ring B180447
Sat. June 9 • 1 - 4 p.m.
Eva Sherman
Metalwork, Soldering
\$139



Mimosa Collar B180710
Sat. June 9 • 9 a.m. - 4 p.m. (1 hr break)
Virginia Blakelock
Fringe, Ndebele Herringbone, Right-angle Weave, Square Stitch
\$164



Multiplicity Ring: Solder Workout B180305
Sat. June 9 • 8 a.m. - noon
Kieu Pham Gray
Metalwork, Soldering
\$197



Netted Cabochon Pendant B180288
Sat. June 9 • 1 - 4 p.m.
Irina Miech
Wirework
\$133



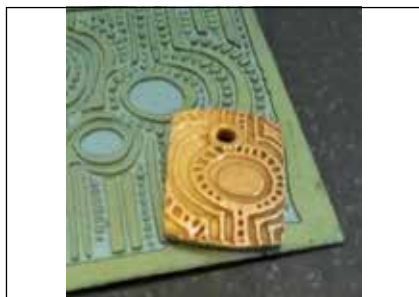
On a Wing: Colored Pencil Earrings or Pendant B180373
Sat. June 9 • 9 a.m. - 4 p.m. (1 hr break)
Mary Karg
Metalwork
\$199



Patchwork Silver Pendant B180963
Sat. June 9 • 9 a.m. - 4 p.m. (1 hr break)
Gwen Youngblood
Metalwork, Soldering
\$227



Peyote Intensive B180405
Sat. June 9 • 9 a.m. - 4 p.m. (1 hr break)
Glenda Paunonen
Peyote Stitch
\$209



Photopolymer Plates and Bronze Clay B180663
Sat. June 9 • 9 a.m. - noon
Ed and Martha Biggar
Metal Clay
\$169



Pirelli Bracelet B180492
Sat. June 9 • 1 - 4 p.m.
Adele Kimpell
Right-angle Weave
\$129



Playing with Paper B180852
Sat. June 9 • 9 a.m. - 4 p.m. (1 hr break)
Sarah Bober
Metal Clay
\$274



Rectangles and Squares Necklace B180009
Sat. June 9 • 9 a.m. - 4 p.m. (1 hr break)
Francie Broadie
Bead Stitching, Right-angle Weave
\$219



Red Carpet Earrings B180360
Sat. June 9 • 8 a.m. - noon
Mary Soucy
Chain Mail
\$196



Rhinestone Ball Necklace B180358
Sat. June 9 • 1 - 4 p.m.
Mary Soucy
Chain Mail
\$169



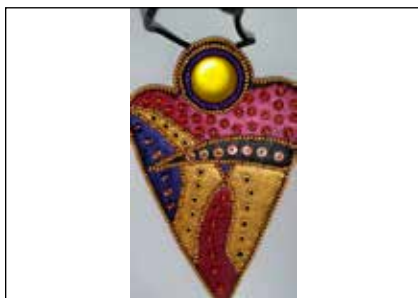
Riveted Coral Bangles with Etched Spacers B180589
Sat. June 9 • 8 a.m. - 4 p.m.
Kay Rashka
Etching, Metalwork, Wirework
\$298



Romancing the Stone B180946
Sat. June 9 • 9 a.m. - 4 p.m. (1 hr break)
Francesca Watson
Lapidary, Soldering, Metalwork
\$234



Saltwater Metal Etching B180059
Sat. June 9 • 9 a.m. - 4 p.m. (1 hr break)
Tracy Stanley
Etching, Metalwork
\$229



Samurai Empress B180329
Sat. June 9 • 9 a.m. - 4 p.m. (1 hr break)
Susan Manchester
Embroidery, Gluing or Adhesive
\$182



Sculptural Felted Bracelets B180016
Sat. June 9 • 9 a.m. - 4 p.m. (1 hr break)
Kim Van Antwerp
Embroidery, Fiber-related
\$209



Spiral Ring B180167
Sat. June 9 • 1 - 5 p.m.
Kaska Firor
Wirework
\$211



Stacking Cuff Bracelets B180981
Sat. June 9 • 1 - 4 p.m.
Julie Sanford
Metalwork, Soldering
\$149



Starlight Voyage Necklace B180185
Sat. June 9 • 9 a.m. - 4 p.m. (1 hr break)
Miriam Shimon
Ndebele Herringbone, Peyote Stitch
\$254



Teardrop Pendant with Snap Setting B180934
Sat. June 9 • 9 a.m. - noon
Scott Mason & Phyllis Flora
Soldering, Wirework
\$119



Tendrill Earrings B180615
Sat. June 9 • 8 a.m. - 4 p.m.
Sarah Thompson
Metalwork, Wirework
\$248



The BeadSmith Presents: Frond B180717
Sat. June 9 • 9 a.m. - 4 p.m. (1 hr break)
Fran Griffith
Ndebele Herringbone, Peyote Stitch
\$239



The BeadSmith Presents: Miss Daisy B180893
Sat. June 9 • 9 a.m. - 4 p.m. (1 hr break)
Natascha Bijl & Cora Sparidaans
Peyote Stitch
\$214



Three Dimensional Forged Cuff B180966
Sat. June 9 • 9 a.m. - 4 p.m. (1 hr break)
Anne Mitchell
Metalwork
\$299



Timanti B180796
Sat. June 9 • 9 a.m. - noon
Charlene Abrams
Multiple Stitches, Right-angle Weave
\$129



Tin Thread Necklace B180123
Sat. June 9 • 9 a.m. - noon
Katherine Buenger
Wirework
\$124



TOHO BEADS Presents: Ladder Necklace B180809
Sat. June 9 • 9 a.m. - noon
Yuko Shiba
Bead Crochet
\$179



TOHO BEADS Presents: Raised Semicircular Bracelet B180745
Sat. June 9 • 1 - 4 p.m.
Mieko Ogura
Netting, Right-angle Weave
\$144



Tripod Pendant B180820
Sat. June 9 • 9 a.m. - 4 p.m. (1 hr break)
Kathy King
Square Stitch
\$184



Twisted Dragon's Tail Necklace B180741
Sat. June 9 • 9 a.m. - 4 p.m. (1 hr break)
Cheryl Erickson
Brick Stitch
\$219



Twisted Sisters Silver Bracelets B180442
Sat. June 9 • 9 a.m. - 4 p.m. (1 hr break)
Cristina Leonard & Gail Lannum
Metalwork
\$204



Wear Me in a Few Ways: A Necklace B180671
Sat. June 9 • 1 - 4 p.m.
Carol Cypher
Peyote Stitch, Right-angle Weave
\$109



Wire-Woven Ribbon Bracelet

Sat. June 9 • 8 a.m. - noon

Kaska Firor

Wirework

\$198

B180164



**A Bevy of Black and Ivory
Water Transfer Polymer/Brass Bracelets**

Sat. June 9 • 6 - 9 p.m.

Louise Fischer Cozzi

Polymer

\$109

B180316



Amber Lights Necklace

Sat. June 9 • 6 - 9 p.m.

Carol Cypher

Multiple Stitches, Netting, Peyote Stitch,

Right-angle Weave

\$124

B180463



Athena Pendant

Sat. June 9 • 6 - 9 p.m.

Vilma Lee-Heinzinger

Embroidery, Netting, Peyote Stitch

\$184

B180825



Beaded Beads

Sat. June 9 • 6 - 9 p.m.

Jennifer Shibona

Netting, Peyote Stitch, Right-angle Weave

\$154

B180648



Borosilicate Sparkly Pendant

Sat. June 9 • 6 - 9 p.m.

Lucas Clarke

Glass and Lampworking

\$151

B180830



Buttoned Up

Sat. June 9 • 6 - 9 p.m.

Maria Richmond

Metalwork, Wirework

\$114

B180727



Cable Knit Sweater Necklace

Sat. June 9 • 6 - 9 p.m.

Cheryl Erickson

Multiple Stitches, Peyote Stitch

\$164

B180481



Clockwork Cogs Chain Mail Bracelet

Sat. June 9 • 6 - 9 p.m.

Michelle Brennan

Chain Mail

\$124

B180619



Decorative S-Clasp

Sat. June 9 • 6 - 9 p.m.

Sarah Thompson

Wirework

\$109

B180667



Desert Lily Pendant

Sat. June 9 • 6 - 9 p.m.

Melissa Mauk Rodarte & Kelly Thompson

Multiple Stitches

\$103

B180245



**Discover Torch Enameling:
Raku Enameling**

Sat. June 9 • 6 - 9 p.m.

Steven James

Enamel

\$169

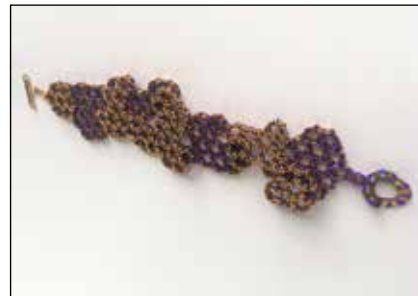
B180450



Drawing on Metal with Colored Pencils B180754
Sat. June 9 • 6 - 9 p.m.
Mary Karg
Metalwork
\$114



Embossed Bezels with Pizazz B180359
Sat. June 9 • 6 - 9 p.m.
Lori Thomas
Metalwork, Resin/Epoxy
\$118



Honeycomb B180824
Sat. June 9 • 6 - 9 p.m.
Kathy King
Multiple Stitches, Netting
\$109



Indulgence Earrings B180872
Sat. June 9 • 5 - 9 p.m.
Amea K. Sweet-McNamara
Embroidery, Fiber-related, Gluing or Adhesive
\$179



Industrial Chic Necklace B180507
Sat. June 9 • 6 - 9 p.m.
Adele Kimpell
Right-angle Weave
\$143



Ink Blot B180413
Sat. June 9 • 6 - 9 p.m.
Deedee Skigen
Netting, Wirework
\$164



Kumihimo Math: Introduction to Counted Fades B180545
Sat. June 9 • 6 - 9 p.m.
Rebecca Combs
Kumihimo
\$154



Lasso Ring B180521
Sat. June 9 • 6 - 9 p.m.
Eva Sherman
Metalwork, Soldering
\$129



Mantra Cuff, Double-Sided B180860
Sat. June 9 • 6 - 9 p.m.
Kim O'Neill
Etching, Metalwork
\$114



Metal Finishing Techniques 101 B181906
Sat. June 9 • 5 - 9 p.m.
Kay Rashka
Metalwork
\$194



Mosaic Tiles Bracelet B180319
Sat. June 9 • 6 - 9 p.m.
Susan Manchester
Right-angle Weave
\$104



Natural Wonder Fishtail Wrap Bracelet B180313
Sat. June 9 • 6 - 9 p.m.
Tory Vezina
Bead Stringing, Macramé
\$109



Oh Happy Day!

Sat. June 9 • 6 - 9 p.m.
Shona Brooks
Brick Stitch, Peyote Stitch
\$136

B180258



Open Studio

Sat. June 9 • 6 - 9 p.m.
Kieu Pham Gray
Chain Mail, Enamel, Metalwork, Pearl Knotting,
Resin/Epoxy, Right-angle Weave, Soldering,
Wirework
\$42

B180314



**Photopolymer Plates
and Silver Metal Clay**

Sat. June 9 • 6 - 9 p.m.
Ed and Martha Biggar
Metal Clay, Polymer
\$169

B180647



Precious Posts

Sat. June 9 • 6 - 9 p.m.
Sarah Bober
Metal Clay
\$154

B180854



Reversible Marion Medallion

Sat. June 9 • 6 - 9 p.m.
Allie Buchman
Multiple Stitches, Peyote Stitch, Right-angle Weave
\$129

B180156



Sami-Inspired Bracelet

Sat. June 9 • 6 - 9 p.m.
Katherine Buenger
Wirework
\$114

B180122



Serpentine Bliss

Sat. June 9 • 6 - 9 p.m.
Eva Rushton
Multiple Stitches, Peyote Stitch
\$129

B180375



Solar System Earrings

Sat. June 9 • 6 - 9 p.m.
Kim St. Jean
Metalwork, Soldering, Wirework
\$139

B181901



**Southwestern Boho-Inspired
Bib Necklace**

Sat. June 9 • 6 - 9 p.m.
So Vang
Wirework
\$134

B180330



Spinner Ring

Sat. June 9 • 6 - 9 p.m.
Robyn Cornelius
Metalwork, Soldering
\$159

B181909



Stamping, Snaps, and Studs

Sat. June 9 • 6 - 9 p.m.
Cindy Kinerson
Fiber-related
\$119

B180403



Sunburst Pin/Pendant

Sat. June 9 • 6 - 9 p.m.
Doris Coghill
Peyote Stitch, Right-angle Weave, Multiple Stitches
\$131

B180172



Sunset B180869
Sat. June 9 • 6 - 9 p.m.
Anne Hesse
Brick Stitch, Embroidery, Gluing or Adhesive, Polymer
\$129



Sweet Pea Chain B180811
Sat. June 9 • 6 - 9 p.m.
Wendy Remmers
Chain Mail
\$164



Swing-Top Bracelet B180982
Sat. June 9 • 6 - 9 p.m.
Julie Sanford
Metalwork, Soldering
\$144



The BeadSmith Presents: Nordic Flower B180734
Sat. June 9 • 6 - 9 p.m.
Fran Griffith
Multiple Stitches, Netting, Peyote Stitch
\$134



The BeadSmith Presents: Trione Bracelet B180326
Sat. June 9 • 5 - 9 p.m.
Isabella Lam
Multiple Stitches, Ndebele Herringbone, Peyote Stitch
\$234



TOHO BEADS Presents: Club Necklace B180800
Sat. June 9 • 6 - 9 p.m.
Mieko Ogura
Peyote Stitch, Right-angle Weave
\$129



Treasure Chest Bracelet B180973
Sat. June 9 • 5 - 9 p.m.
Kate Richbourg
Gluing or Adhesive, Loom, Wirework
\$204



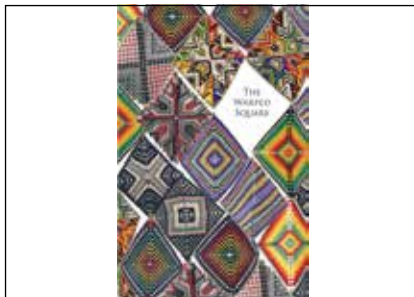
Twisted Insomnia Bracelet B180152
Sat. June 9 • 6 - 9 p.m.
Shannon Jambard
Multiple Stitches
\$134



Victorian Earrings B180587
Sat. June 9 • 6 - 9 p.m.
Glenda Paunonen
Peyote Stitch
\$117



Visions of Vogue B180736
Sat. June 9 • 6 - 9 p.m.
Marla Salezze
Right-angle Weave
\$154



Warped Squares and More Workshop B180014
Sat. June 9 • 6 - 9 p.m.
Kim Van Antwerp
Peyote Stitch
\$114



Wired Silver Ring B180882
Sat. & Sun. June 9 & 10 • 5 - 9 p.m.; 9 a.m. - noon
Donna Lewis
Gluing or Adhesive, Metal Clay, Metalwork, Wirework
\$288



Beading Insomnia Bracelet
Sun. June 10 • 9 a.m. - noon
Shannon Jambard
Multiple Stitches
\$134

B180151



Bella Mia
Sun. June 10 • 8 a.m. - noon
Miriam Shimon
Multiple Stitches
\$189

B180726



Bolsnoi Links
Sun. June 10 • 9 a.m. - noon
Adele Kimpell
Right-angle Weave
\$134

B180493



Botany Gone Bad Pendant
Sun. June 10 • 9 a.m. - noon
Mary Karg
Embroidery
\$154

B180374



Butterfly Wing Pendant
Sun. June 10 • 9 a.m. - noon
Irina Miech
Wirework
\$133

B180289



Cecilia Necklace
Sun. June 10 • 8 a.m. - noon
Patty Tiry
Multiple Stitches, Right-angle Weave
\$149

B180683



**Colorful Metal:
Easy Painting with Alcohol Inks**
Sun. June 10 • 1 - 4 p.m.
Lori Thomas
Metalwork
\$111

B181905



Crescent Moon Pendant
Sun. June 10 • 9 a.m. - noon
Sarah Thompson
Wirework
\$106

B180621



Demi Spiral
Sun. June 10 • 9 a.m. - noon
Doris Coghill
Ndebele Herringbone, Netting
\$125

B180343



DiamonDuo Hoop Frame Earrings
Sun. June 10 • 9 a.m. - noon
So Vang
Peyote Stitch, Right-angle Weave
\$114

B180193



**Discover Torch Enameling:
The Rain Drop Pendant**
Sun. June 10 • 9 a.m. - noon
Steven James
Enamel, Wirework
\$164

B180145



Druzy Daydream Pendant
Sun. June 10 • 9 a.m. - noon
Marla Salezze
Fiber-related, Netting, Peyote Stitch, Wirework
\$154

B180742



Ethereal and Colorful Felt Beads B180532
Sun. June 10 • 9 a.m. - noon
Carol Cypher
Fiber-related
\$109



Globular Clusters B180377
Sun. June 10 • 8 a.m. - noon
Eva Rushton
Multiple Stitches, Peyote Stitch, Right-angle Weave
\$159



Inked B180499
Sun. June 10 • 9 a.m. - noon
Eva Sherman
Metalwork, Soldering
\$144



Mini Piercing B181908
Sun. June 10 • 9 a.m. - noon
Robyn Cornelius
Metalwork, Soldering
\$159



Ocean Breeze B180363
Sun. June 10 • 9 a.m. - noon
Deedee Skigen
Netting, Wirework
\$164



Ocean Tide Gemstone and Macramé Wrap Bracelet B180312
Sun. June 10 • 9 a.m. - noon
Tory Vezina
Bead Stringing, Macramé
\$114



Patchwork Rhinestone Bracelet B180160
Sun. June 10 • 8 a.m. - noon
Mary Soucy
Chain Mail
\$221



Pincushion Pendant B180255
Sun. June 10 • 9 a.m. - noon
Melissa Mauk Rodarte & Kelly Thompson
Multiple Stitches
\$99



Prong-Settings for Rough Stones B180980
Sun. June 10 • 9 a.m. - noon
Julie Sanford
Metalwork, Soldering
\$159



Renaissance Bracelet B180528
Sun. June 10 • 9 a.m. - noon
Marina Montagut
Multiple Stitches, Ndebele Herringbone
\$127



Snakes and Ladders Chain Mail Bracelet B180604
Sun. June 10 • 9 a.m. - noon
Michelle Brennan
Chain Mail
\$124



Squiggles Bracelet B180739
Sun. June 10 • 9 a.m. - noon
Cheryl Erickson
Multiple Stitches
\$124



Sterling Name Pendant

Sun. June 10 • 9 a.m. - noon
Kim St. Jean
Metalwork, Soldering
\$129

B180915



Sundance Magic

Sun. June 10 • 9 a.m. - noon
Shona Brooks
Brick Stitch, Multiple Stitches, Peyote Stitch
\$134

B180119



Sunday Morning Sun

Sun. June 10 • 9 a.m. - noon
Rae Arlene Reller
Right-angle Weave
\$139

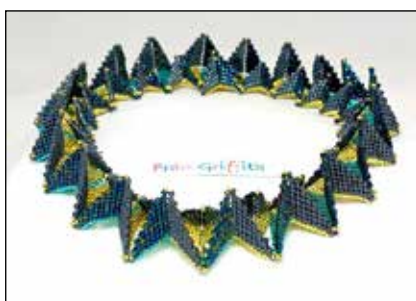
B180261



**The BeadSmith Presents:
Blossom Necklace**

Sun. June 10 • 8 a.m. - noon
Isabella Lam
Beaded Flowers, Ndebele Herringbone, Netting,
Right-angle Weave, Spiral Rope
\$283

B180202



**The BeadSmith Presents:
Diamond in the Ruff**

Sun. June 10 • 8 a.m. - noon
Fran Griffith
Peyote Stitch
\$204

B180949



Theodora Bracelet

Sun. June 10 • 9 a.m. - noon
Virginia Blakelock
Fringe, Ndebele Herringbone, Square Stitch
\$139

B180725



**TOHO BEADS Presents:
Ivory Colored Pearl Necklace**

Sun. June 10 • 9 a.m. - noon
Mieko Ogura
Netting
\$157

B180799



Twinkle Twist Bracelet

Sun. June 10 • 9 a.m. - noon
Kieu Pham Gray
Metalwork, Soldering
\$146

B180311



Western Hills Bracelet

Sun. June 10 • 9 a.m. - noon
Cindy Kinerson
Fiber-related, Loom, Macramé
\$114

B180006

**Visit BeadandButtonShow.com
for details and up-to-date information
on all classes.**

Instructor Listing

A

Ablew, Theresa D.

PJ Tool Jewelry Presents: Powder Coating Party! Tue. June 5, PJ Tool Jewelry Presents: Party After Dark! Glow-in-the-Dark Starburst Earrings Tue. June 5, PJ Tool Jewelry Presents: Powder Coating Party! Wed. June 6, PJ Tool Jewelry Presents: Party After Dark! Glow-in-the-Dark Galaxy Pendant Wed. June 6

Abrams, Charlene

Estrelado Fri. June 8, Killian Fri. June 8, Timanti Sat. June 9

Andrews, Laura

Matryoshka Nesting Dolls Sun. June 3, Drawstring Locket Sun. June 3, Make-A-Wish Mon. June 4, Dicey Druzy Tue. June 5

Angel, Nikia

Crystal Drop Tassel Necklace Sun. June 3, Enchanted Crystal Lariat Mon. June 4, Jumble Branched Ndebele Bracelet Tue. June 5, Shadowbox Shibori Cuffs Wed. June 6

B

Baker, Patrice

Showcase a Coin with Silver Metal Clay Tue. June 5

Baldwin, Doug

Light and Shadow: The Art of Photographing Beads, Glass and Jewelry Wed. June 6, Creative Photoshop for Artists and Craftspeople Thu. June 7

Balonis, Marcia

Bouquet of Posies Sun. June 3, Night Sky Mon. June 4, Stained Glass Bracelet Tue. June 5, Lentil Flowers Bracelet Tue. June 5, A Moment in Time Wed. June 6

Barker-Morrison, Natalia

Tree of Life Ring Tue. June 5,

Diamond Weave Ring Wed. June 6

Baron, Paulette

Eruption Bracelet Tue. June 5, Gradating Elegance Necklace Wed. June 6, Spiraling Along Bracelet Wed. June 6

Bevan, Shona

Just Let Me Bead Presents: Borgia Flower Pendant Tue. June 5, Just Let Me Bead Presents: Revolution Necklace Wed. June 6, Just Let Me Bead Presents: DuoCRAW Slinky Bracelet Wed. June 6, Just Let Me Bead Presents: CRAW Donut Pendant Thu. June 7

Biggar, Ed and Martha

Making a Point: Hollow Forms in Glass Tue. June 5, Mixing Color with Metal Clay Tue. June 5, Fused Glass Cabochons Wed. June 6, Hand-Forged Necklace with Metal Clay Embellishments Fri. June 8, Photopolymer Plates and Bronze Clay Sat. June 9, Hollow Forms in EZ960 Clay Sat. June 9, Photopolymer Plates and Silver Metal Clay Sat. June 9

Bijl, Natascha

The BeadSmith Presents: Maitiki Tue. June 5, The BeadSmith Presents: Sophia Wed. June 6, The BeadSmith Presents: Mary Rose Thu. June 7, The BeadSmith Presents: Giselle Fri. June 8, The BeadSmith Presents: Miss Daisy Sat. June 9

Blakelock, Virginia

Florentine Necklace Fri. June 8, Mimosa Collar Sat. June 9, Theodora Bracelet Sun. June 10

Bober, Sarah

Playing with Paper Sat. June 9, Precious Posts Sat. June 9

Borelli, Cary

Poinsettia Cuff Bracelet Sun. June 3, Conveyance Wrap

Bracelet Sun. June 3, Nouveau Cuff Bracelet Mon. June 4, Pinnacle Bracelet Mon. June 4, Eye of the Machine Cuff Bracelet Tue. June 5, Catalina Cuff Bracelet Wed. June 6

Brennan, Michelle

Lattice Necklace Fri. June 8, Baroque Bars Chain Mail Bracelet Fri. June 8, In Full Bloom Chain Mail Pendant Sat. June 9, Clockwork Cogs Chain Mail Bracelet Sat. June 9, Snakes and Ladders Chain Mail Bracelet Sun. June 10

Broadie, Francie

Emergence Necklace Fri. June 8, Rectangles and Squares Necklace Sat. June 9

Brooks, Shona

Boho Crochet Tue. June 5, Oh Happy Day! Sat. June 9, Sundance Magic Sun. June 10

Brown, Marti

Exploring Niobium Sun. June 3, Rainforest Leaves Sun. June 3, Painting in the Abstract on Niobium Mon. June 4, Cab-Set Niobium Pendant Mon. June 4, Making an Impression Tue. June 5, Future's Portals Tue. June 5, Resisting Developments Wed. June 6

Bruns, Karen

Mini Monster Norton Tue. June 5, Foxglove Necklace Tue. June 5

Buchman, Allie

Acadia Bracelet Wed. June 6, Reversible Marion Medallion Sat. June 9

Buenger, Katherine

Tin Thread Necklace Sat. June 9, 8-Strand Chevron Braided Bracelet Sat. June 9, Sami-Inspired Bracelet Sat. June 9

C

Cain, Nancy

La Belleza de los Muertos Wed. June 6, Posie Pendant Wed. June 6, Four Seasons Thu. June 7

Carter, James

Elongated Framed Cloisonne Pendant Fri.-Sun. June 1-3

Cave, Carolyn

BeadFX Presents: Glass Meets Metal Earrings Sun. June 3, BeadFX Presents: Nouveau Gem Necklace Mon. June 4, BeadFX Presents: Tia Collar Tue. June 5, BeadFX Presents: Sweet Lace Bracelet Wed. June 6, BeadFX Presents: Crescendo Bracelet Wed. June 6, BeadFX Presents: Windy Links Bracelet Wed. June 6

Clarke, Lucas

Borosilicate Honey Dipper Wed. June 6, Borosilicate Mini Chandelier Thu. June 7, Borosilicate Deluxe Miniature Chandelier Fri. & Sat. June 8 & 9, Borosilicate Sparkly Pendant Sat. June 9

Coghill, Doris

Sunburst Pin/Pendant Sat. June 9, Demi Spiral Sun. June 10

Combs, Rebecca

The Show Stopper: Beaded Kumihimo Thu. June 7, Essential Kumihimo Sat. June 9, Kumihimo Math: Introduction to Counted Fades Sat. June 9

Conti, Deborah

Zentangle on Steroids Tue. June 5, Puzzle Me Not Tue. June 5, Captured Treasures Wed. June 6

Cornelius, Robyn

Setting Unusual Gemstones Sun. June 3, Mini Piercing Sun. June 3, Pebble Cuff Mon. June 4, Spinner Ring Mon. June 4, Sand Cast Rings Tue. June 5, Pebble Stack Tue. June 5, Wave Bangle

Set Wed. June 6, Mini Wave Ring Wed. June 6, Enameled Wave Bangle Thu. June 7, Coil Cuff Fri. June 8, Deconstructed Bracelets Sat. June 9, Spinner Ring Sat. June 9, Mini Piercing Sun. June 10

Cozzi, Louise Fischer

Big Oval M Earrings with Polymer Thu. June 7, A Bevy of Silk Screened Bangles Fri. June 8, Apostrophe Necklace with Polymer Sat. June 9, A Bevy of Black and Ivory Water Transfer Polymer/Brass Bracelets Sat. June 9

Crosman Moore, Gail

Resin with an Inner Glow Mon. June 4, Translucent Jewelry: Light a Brooch Tue. June 5, Opaque and Transparents: Creating Subtle Color Shifts Wed. June 6

Crowley, Lis-el

EZ960 Wrap Rings Sun. June 3, Goddess Pendant Mon. June 4, Phoenix Rising Pendant Tue. June 5, Art Nouveau Designs in Metal Clay Wed. June 6, Organic Metal Clay Pod Thu. June 7

Cypher, Carol

Luna Triptych Necklace Fri. June 8, For Cleopatra: Serpent of the Nile Sat. June 9, Wear Me in a Few Ways: A Necklace Sat. June 9, Amber Lights Necklace Sat. June 9, Ethereal and Colorful Felt Beads Sun. June 10

D

Dennis, Diane

Faux Marcasite Bracelet Tue. June 5, A Simple Elegance Tue. June 5, Play with Fire Wed. June 6

E

Erickson, Cheryl

Demi Medallions Necklace Tue. June 5, Twisted Puzzle Rope Wed. June 6, Chenille Workshop Fri. June 8, Twisted Dragon's Tail Necklace Sat. June 9, Cable Knit Sweater Necklace Sat. June 9, Squiggles Bracelet Sun. June 10

Erickson, Jill

Exotic Leather Pendant Tue. June 5, Nunn Design and Apoxie Sculpt Present: Posh Pendant and Earrings Wed. June 6, Parawire and Apoxie Sculpt Present: Infinity Ombre Pendant Thu. June 7, Nunn Design and Apoxie Sculpt Present: Luxe Ring and Hoops Thu. June 7

F

Firor, Kaska

Big Ring Sun. June 3, Moon Artifact Necklace Mon. June 4, Aphrodite Pendant Tue. June 5, Wire-Woven Bead Ring Tue. June 5, Mixed Link Bracelet Wed. June 6, Netted Stone Pendant Wed. June 6, Twist Bracelet Thu. June 7, Novueau Scrolls Necklace Fri. June 8, Wire-Woven Ribbon Bracelet Sat. June 9, Spiral Ring Sat. June 9, Moon Artifact Necklace Mon. June 4, Aphrodite Pendant Tue. June 5

Fitzgerald, Diane

You're My Sunflower Necklace Tue. June 5, Ziggurat Box Wed. June 6, Bells of Ireland Necklace Wed. June 6, Purple Gingko Leaf Necklace Thu. June 7

Flora, Phyllis

Winner, Winner Spinner Ring Mon. June 4, Buckle Ring Mon. June 4, Fold Form Meets Enamel Tue. June 5, Roller Print Earrings Tue. June 5, Stone-Set Rings Wed. June 6, Bangalore Wed. June 6, Finger Bangles Thu. June 7, Heart-

ful Home Fri. June 8, Wheelwright Earring Fri. June 8, Teardrop Pendant with Snap Setting Sat. June 9, Barn Rings Sat. June 9

Focht, Cheryl

My Sweet Sarah Kumihimo and Embellished Netting Choker Mon. June 4, 6-Striped Sparkle Ridged Spiral Kumihimo Necklace Tue. June 5

Frumin, Leslee

Pyramid Pendant Necklace Sun. June 3, Trabucco Canyon Cuff Mon. June 4, Four Corners Bracelet Tue. June 5, Sunburst Pendant Necklace Wed. June 6, Eclipse Necklace Thu. June 7

G

Gage, Sherie

Kiln-Fired Enamel: Cabochon or Button - You Choose! Wed. June 6, Kiln-Fired Enamel: Earrings or Earring Cabochons Wed. June 6

Galivan, Bob

TOHO BEADS Presents: Demilicious Kumihimo Bracelet Tue. June 5, Hey Picasso! Leno Braid Wed. June 6, Hira-genji Leather Bracelet Wed. June 6, Nejire Edo-yatsu Braid Thu. June 7, Andean Simp'a Wallqa Fri. June 8

Garbig, Pamela

Pillars of Athena Tue. June 5, The Gilded Lady Tue. June 5

Gardiner, Marilyn

Candy Cane Cord Bracelet Sun. June 3, Staggered Boxchain Bracelet Mon. June 4, Staggered Byzantine Bracelet Tue. June 5, Parallel Cuff Bracelet Wed. June 6, Inverted Spiral Bracelet Thu. June 7

Gaskell, Adrienne

Decoding Complex Braids Mon.-Wed. June 4-6, Kumihimo Marudai Fundamentals Fri. & Sat. June 8 & 9

Grakowsky Shippee, Melissa

Prism Flower Bracelet Fri. June 8

Griffith, Fran

The BeadSmith Presents: Phoenix Fri. June 8, The BeadSmith Presents: Frond Sat. June 9, The BeadSmith Presents: Nordic Flower Sat. June 9, The BeadSmith Presents: Diamond in the Ruff Sun. June 10

Guang, Yin

Beaded Kumihimo Focal-Me Match-Me Magnetic Necklace Mon. June 4, Beaded Kumihimo Leaf Necklace Tue. June 5, Beaded Kumihimo Shell and Pearl Necklace Tue. June 5, Beaded Kumihimo Triple Wrap Bracelet Wed. June 6

Guzman, Becky

Woven Bookstone Bracelet Tue. June 5, Beaded Bookstone Bracelet Wed. June 6

H

Haley, Beki

Woodland Jewels Sun. June 3, Water Nymph Mon. June 4, Monet's Garden Tue. June 5, Zayandeh Wed. June 6

Han, Monica

Northern Lights Mon. June 4, When Montees Meet Chain Mail Mon. June 4, Royal Treatment Tue. June 5, BeCharmed Bracelet Tue. June 5

Hawkey, Diane

Now That's a Jig! Presents: A Murder of Crows Mon. June 4, Now That's a Jig! Presents: Mystic Necklace Tue. June 5

Hawkins, Pamela

Beach Baby Earring Patina Workshop Tue. June 5, Ride Wed. June 6

Hesse, Anne

Sunset Sat. June 9

Hettmansperger, Mary

Colored Pencils, Patinas,

Embossing with Easy Bezels and Cold Connections Sun. June 3, Shadow Boxes and Torch-Fire Enameling Mon. June 4, Mastering the Rivet and Cold Connections with Silver Fusing, Reticulation and Patinas Tue. June 5, Hinges, Books, and Lockets with Windows and Portholes Wed. June 6, Layers, Dimension, Alternative Metals, and Cold Connections Thu. June 7

Holsclaw, Cindy

Framed Art Blossoms Necklace Thu. June 7, Twisty Starfish Necklace Fri. June 8

Huntley, Teresa

Long Kumihimo Braided Necklace with Lampworked Beads Sun. June 3, Kumihimo Noosa-Style Bracelet Sun. June 3, Kumihimo Braided Bubble Bracelet Mon. June 4, American Flag Kumihimo Bracelet Tue. June 5

Hyde, Diane

Snap to It! Wed. June 6, Lucky Penny Pendant Necklace Sat. June 9

J

Jambard, Shannon

Twisted Insomnia Bracelet Sat. June 9, Beading Insomnia Bracelet Sun. June 10

James, Steven

Discover Torch Enameling: The Luminaria Pendant Fri. June 8, Discover Torch Enameling Sat. June 9, Discover Torch Enameling: Raku Enameling Sat. June 9, Discover Torch Enameling: The Rain Drop Pendant Sun. June 10

K

Karg, Mary

Layered Colored Pencil Pin Wed. June 6, Layered Colored Pencil Pendant with Pearl Thu. June 7, Nouveau Scrolls Necklace Fri.

June 8, **On a Wing: Colored Pencil Earrings or Pendant** Sat.
 June 9, **Drawing on Metal with Colored Pencils** Sat. June 9,
Botany Gone Bad Pendant Sun.
 June 10

Kato, Masako
 TOHO BEADS Presents:
Casablanca Lily Tue. June 5

Katz, Amy
Magnifique Necklace Wed. June 6,
Coral Reef Necklace Thu. June 7,
Double Vision Bracelet Fri. June 8

Kimpell, Adele
Don't Cry Over CRAW and PRAW Fri. June 8, **Pirelli Bracelet**
 Sat. June 9, **Industrial Chic Necklace** Sat. June 9, **Bolshoi Links** Sun. June 10

Kinerson, Cindy
Leather and Loom Bracelet Tue. June 5,
Bead Loom Basics Wed. June 6,
Desert Moon Pendant Thu. June 7,
Cathedral Window Cuff Thu. June 7,
Southwestern Wrap Bracelets Fri. June 8,
Crystal Canyon Cuff Fri. June 8,
Stamping, Snaps, and Studs Sat. June 9,
Western Hills Bracelet Sun. June 10

King, Kathy
Tripod Pendant Sat. June 9,
Honeycomb Sat. June 9

Kingsley-Heath, Heather
 The BeadSmith Presents:
Tiffany Pendant Wed. June 6,
 The BeadSmith Presents:
Carousel Bracelet Thu. June 7,
 The BeadSmith Presents:
Grace Bracelet Fri. June 8

Kochi, Hana
 TOHO BEADS Presents: **Vivid Color Necklace** Sun. June 3,
 TOHO BEADS Presents: **Flower Garden Necklace** Mon. June 4

Kovnesky, Renee
Moonlit Evening Bracelet Sun. June 3,
Sweet Floweret Pendant Mon. June 4

L

Lam, Isabella
 The BeadSmith Presents: **Atlantis Necklace** Wed. June 6,
 The BeadSmith Presents: **Trione Bracelet** Sat. June 9,
 The BeadSmith Presents: **Blossom Necklace** Sun. June 10

Lannum, Gail
PMC Vintage Ethnic Pendant and Earrings Fri. June 8,
Twisted Sisters Silver Bracelets Sat. June 9

Larsen, Patricia
Simple Complexity Tue. June 5,
Complex Twisted Cane in Soft Glass Wed. June 6

Leahy, Kim
Cozumel Bracelet Sun. June 3,
Diana Bracelet Sun. June 3,
Miriam Necklace Mon. June 4,
Midnight Sunset Mon. June 4,
Voyager Bracelet Tue. June 5

Lee-Heinzinger, Vilma
Athena Pendant Sat. June 9

Lehndorff, Betsy
Freshwater Pearl Carving Techniques Fri. June 8,
Advanced Pearl Carving Sat. June 9

Lenart Kazmer, Susan
Jewelry Forms: Forging Wire + Leather Wed. June 6,
Tassels: Fringe Fiber, Sticks, and Stones Wed. June 6,
Building Bezels: Soldering and Setting Drusys and Hollow Forms Thu. June 7,
Cold Enamel: Color + Resin on Metal Fri. June 8,
Building Objects in Resin: Casting Resin Sat. June 9,
Layering Transparents: Foils, Tints, and Imagery in Resin Sat. June 9

Leonard, Cristina
PMC Moroccan Pendant Thu. June 7,
PMC Vintage Ethnic Pendant and Earrings Fri. June 8,
Twisted Sisters Silver Bracelets Sat. June 9

Leonardo, Karen

Basic Wild Flower Lampwork Class Tue. June 5,
Earthy Etched Paw Print Lampworked Beads Tue. June 5

Lewis, Donna
Silver Cholla Pendant Wed. June 6,
Wired Silver Ring Sat. & Sun. June 9 & 10

Lindell, Anna
In Memoriam Sun. June 3,
Forget Me Not Sun. June 3,
Radiolarian Moth Mon. June 4

Luli, Kathy
Chain Reaction Sun. June 3,
Donut Spinner Mon. June 4

M

Machan, April
Crown Jewels Necklace Wed. June 6

Manchester, Susan
Samurai Empress Sat. June 9,
Mosaic Tiles Bracelet Sat. June 9

Mandich, Heidi
Knots and Fusion Wed. June 6,
Pendant with a Touch of Gold Thu. June 7,
The Argentium Road to Rome Thu. June 7

Martins, Carla
Snap 'N Swap Elegant Necklace: Wear It While You Make It! Sun. June 3

Mason, Scott
Winner, Winner Spinner Ring Mon. June 4,
Buckle Ring Mon. June 4,
Roller Print Earrings Tue. June 5,
Stone-Set Rings Wed. June 6,
Bangalore Wed. June 6,
Pipe and Drape Wed. June 6,
Finger Bangles Thu. June 7,
Finger Weaving — No It's Not Viking Knit Thu. June 7,
Teardrop Pendant with Snap Setting Sat. June 9

Mauk Rodarte, Melissa
Textured Borders Bracelet Wed. June 6,
Desert Lily Pendant Sat. June 9,
Pincushion Pendant Sun. June 10

June 3: P. 12-18 • June 4: P. 18-24 • June 5: P. 24-32 • June 6: P. 32-41
 June 7: P. 41-46 • June 8: P. 46-51 • June 9: P. 51-60 • June 10: P. 61-63

McDermott, Patricia

Ariana, Keeper of the Blue Gem Sun. June 3, **Garden Gate Necklaces** Sun. June 3, **Marrakesh Express** Mon. June 4, **Unspoken Dreams Earrings** Mon. June 4

Miech, Irina

Introduction to Metal Clay Sun. June 3, **Nature's Elements in Silver** Sun. June 3, **Layers of Texture Rings** Mon. June 4, **Metal Clay Boot Camp** Tue. June 5, **Tree of Life Pendant** Tue. June 5, **Enchanted Forest Rings** Wed. June 6, **Coral Gardens in Silver** Wed. June 6, **Branch Out!** Thu. June 7, **Leaves, Vines, and Tendrils** Thu. June 7, **Introduction to Metal Clay** Fri. June 8, **Nature's Elements in Silver** Fri. June 8, **Leaves, Vines, and Tendrils** Sat. June 9, **Netted Cabochon Pendant** Sat. June 9, **Butterfly Wing Pendant** Sun. June 10

Miller, Kerrie Sue

Train Track Beaded Textile Bracelet Mon. June 4, **Sparkle Daisy Bracelet** Tue. June 5

Mitchell, Anne

Inverted Teardrop Resin Filled PMC Treasure Locket Mon. June 4, **A Twisted Roman Necklace** Tue. June 5, **Fine-Silver Barbed Wire Necklace** Wed. June 6, **Tab Ribbed Stone Cuff** Thu. June 7, **Fold Form Reinforced Rivet and Hinge Cuff** Fri. June 8, **Three Dimensional Forged Cuff** Sat. June 9

Mode, Chris

Hinged Hide-A-Way Pendant Sun. June 3, **Level with Me!** Sun. June 3, **Inside-Out Ring: Locked Rocks** Mon. June 4, **BUMP Your Heart OUT** Tue. June 5, **Heading in the Right Direction** Wed. June 6

Montagut, Marina

Renaissance Bracelet Sun. June 10

Muir, Tom

Hinges and Joints: Standard, Invisible, and Universal Mon.-Wed. June 4-6

N

Neel, Sue

Chevrons Mon. June 4, **Dangerous Liaisons** Tue. June 5, **Modularity** Wed. June 6, **Woven** Thu. June 7, **Melisandre: The Red Witch Collection** Fri. June 8

Nichols, Kinga

Heart of the Ocean Multi-Functional Bracelet/Necklace Combo Wed. June 6, **Mandragora Bracelet** Thu. June 7

Nolan, Sian

Matryoshka Nesting Dolls Sun. June 3, **Make-A-Wish** Mon. June 4

O

O'Neill, Kim

Organic Vitality Bracelet Tue. June 5, **Book Pendant** Wed. June 6, **Etched Sterling Silver Leather Bracelet** Wed. June 6, **Tribal Pendant and Handmade Chain** Thu. June 7, **Thinking Outside the Box: Etched, Squared, and Blinged Unusual Jewelry** Fri. June 8, **Mantra Pendant with Beaded Cord** Fri. June 8, **Etched Earrings** Sat. June 9, **Etched Sterling Saddle Ring** Sat. June 9, **Mantra Cuff, Double-Sided** Sat. June 9

Ogura, Mieko

TOHO BEADS Presents: Raised Semicircular Bracelet Sat. June 9, **TOHO BEADS Presents: Club Necklace** Sat. June 9, **TOHO BEADS Presents: Ivory Colored Pearl Necklace** Sun. June 10

P

Paramesh, Jayashree

Aster Necklace Sun. June 3, **Starlux Reversible Necklace** Sun.

June 3, **Octium Bracelet** Mon. June 4, **Diosa Necklace** Tue. June 5, **Sedona Sky Necklace** Wed. June 6, **Flora Exotica Necklace** Fri. June 8

Parker, Patricia

Winter Rose Tue. June 5

Parsons, Janice

Color Study Wrap Bracelet Sat. June 9

Patterson, Ralonda

Beadles Sun. June 3, **3-D Fidget Spinner Pendant** Sun. June 3, **Spike the Baby Dragon** Mon. June 4

Paunonen, Glenda

Herringbone Intensive Wed. June 6, **Fairy Garden** Thu. June 7, **Right-Angle Weave Intensive** Fri. June 8, **Peyote Intensive** Sat. June 9, **Victorian Earrings** Sat. June 9

Payne, Regina

MiniDuos Budding Bangle Sun. June 3, **Jewel Encrusted Bangle** Mon. June 4

Pennington, Annie

PJ Tool Jewelry Presents: Powder Coating Party! Tue. June 5, **PJ Tool Jewelry Presents: Party After Dark! Glow-in-the-Dark Starburst Earrings** Tue. June 5, **PJ Tool Jewelry Presents: Powder Coating Party!** Wed. June 6, **PJ Tool Jewelry Presents: Party After Dark! Glow-in-the-Dark Galaxy Pendant** Wed. June 6

Pham Gray, Kieu

Chroniker: Intro to Metalwork Tue. June 5, **Fancy Connections** Tue. June 5, **Pearls Apart Ring** Tue. June 5, **Filigree 101** Wed. June 6, **Enamel in Detail** Wed. June 6, **Riveting Enamels** Wed. June 6, **C.Y.O.D. — Intro to Pick Soldering** Thu. June 7, **Contemporary Earring Jackets** Thu. June 7, **Practice Makes Perfect — Soldering Workout** Fri. June 8,

June 3: P. 12-18 • June 4: P. 18-24 • June 5: P. 24-32 • June 6: P. 32-41
 June 7: P. 41-46 • June 8: P. 46-51 • June 9: P. 51-60 • June 10: P. 61-63

Multiplicity Ring: Solder Work-
out Sat. June 9, **Embossed Enam-**
els Sat. June 9, **Open Studio** Sat.
 June 9, **Twinkle Twist Bracelet**
 Sun. June 10

Picarello, Julie

Drops and Dangles Fri. June 8,
Focus on Focals Sat. June 9

Pollack, Andrew

Out on a (Glass) Limb: Introduc-
tion to Sculpting Glass Birds
 Thu. June 7, **Introduction to**
Blowing Glass for the Beadmak-
er: Ornaments and Small Vessels
 Fri. June 8, **Introduction to Blow-**
ing Glass for the Beadmaker:
Blown Glass Birds Sat. June 9

Popova, Tatiana

Fire Mountain Gems and Beads
Present: Mother's Day Ribbon
Embroidery Design Sat. June 9

Potter, Melanie

Starry Starry Night Bracelet
 Wed. June 6, **Angular Chain** Sat.
 June 9, **Angular Earrings** Sat.
 June 9

R

Rashka, Kay

Soldered Sterling Silver Box Pen-
dant Tue. & Wed. June 5 & 6, **Met-**
al Finishing Techniques 101 Wed.
 June 6, **Fine Tune Your Soldering**
Skills Thu. June 7, **Silver Riveted**
Link Bracelet Fri. June 8, **Riveted**
Coral Bangles with Etched Spac-
ers Sat. June 9, **Metal Finishing**
Techniques 101 Sat. June 9

Rayfield, Lyle

Backyard Birdhouse in Silver
Clay Sun. June 3, **Shadowbox**
Ring in Silver Clay Mon. June 4,
Fit to be Framed: Silver Clay and
Dichroic Glass Tue. June 5, **It's**
Not Your Mother's Rabbit Foot
 Wed. June 6, **Metal Clay Find-**
ings: Toggles, Caps, Cones, and
More Thu. June 7

Reller, Rae Arlene

Sunday Morning Sun Sun.
 June 10

Remmers, Wendy

Orb Bauble Tue. June 5, **Tryzan-**
tine Chain Wed. June 6, **Queen's**
Lace Necklace Thu. June 7, **Fox-**
tail Rope Fri. June 8, **Keystone**
Weave Sat. June 9, **Sweet Pea**
Chain Sat. June 9

Richbourg, Kate

Simple Soldering Boot Camp Fri.
 June 8, **Color Study Wrap Brace-**
let Sat. June 9, **Treasure Chest**
Bracelet Sat. June 9

Richmond, Maria

Reverie Necklace Sun. June 3,
Give Me a Clew Earrings Sun.
 June 3, **Riffing on a Zipper** Mon.
 June 4, **Tangent Pendant** Mon.
 June 4, **Triangulations** Tue. June
 5, **Phoenix Pendant** Tue. June 5,
Moondance Wed. June 6, **But-**
toned Up Sat. June 9

Rockley, Marilee

Shuttle Tatting Basics Sun.
 June 3

Romero, Julie

Potomac Bead Company Pres-
ents: Libellula Soutache Neck-
lace Sun. June 3, **Potomac Bead**
Company Presents: Poetry
Soutache Brooch/Pendant Mon.
 June 4, **Potomac Bead Company**
Presents: Gold Butterfly Brooch
 Tue. June 5

Rudolph, Dana

Fob-ulous Lariat Tue. June 5,
Giovanna Necklace Tue. June 5,
Quatrefoil Necklace Wed. June 6,
The Carolyn Cuff Wed. June 6

Rueth, Kim

Arabella Mon. June 4, **Venetian**
Lace Mon. June 4

Rushton, Eva

Heavenly Bodies Sat. June 9, **Ser-**
pentine Bliss Sat. June 9, **Globu-**
lar Clusters Sun. June 10

Rutledge, Cynthia

Beadwork and Metal - Meet in
the Middle Fri.-Sun. June 1-3,
 Mon.-Wed. June 4-6

S

Salezze, Marla

Visions of Vogue Sat. June 9,
Druzy Daydream Pendant Sun.
 June 10

Sanford, Julie

Rings That Swing Thu. June 7,
Recycling Silver Fri. June 8, **Metal**
Clay For Metalsmiths: Casting
Sticks and Succulents Sat. June 9,
Stacking Cuff Bracelets Sat. June
 9, **Swing-Top Bracelet** Sat. June 9,
Prong-Settings for Rough Stones
 Sun. June 10

Saso, Megumi

TOHO BEADS Presents: Ber-
muda Blue Brooch Tue. June 5,
TOHO BEADS Presents: Bermu-
da Blue Necklace Wed. June 6,
TOHO BEADS Presents: Swirling
Soutache Cuff Thu. June 7

Savors, Megan

Glittering Firefly Brooch/Pen-
dant Thu. June 7, **Jewel Beetle**
Necklace Fri. June 8

Schweder, Brenda

Now That's A Jig! Presents:
Certification I & II Sun. June
 3, **Now That's A Jig! Presents:**
Start To The StartPeg 101 Sun.
 June 3, **Now That's A Jig! Pres-**
ents: Certification III Mon. June
 4, **Now That's A Jig! Presents:**
NTaJ! Top Sellers Mon. June 4

Scott, Frank

Introduction to Marble Making
 Wed. June 6, **Alchemy in Glass**
 Thu. June 7, **Intermediate Marble**
Designs Fri. June 8, **Dots-Dots-**
Dots Sat. June 9

Serafini, Sherry

Icon Necklace Thu. June 7, **Wild**
Thing Cuff Fri. June 8

Sexton, Candice

Beginner Bead Crochet Sun. June 3, Designing and Crocheting Your Bead Crochet Project Mon. June 4, Single Stitch Bead Crochet Tue. June 5

Sherman, Eva

Metal Morphosis Cuff with Cabochon Mon. June 4, Rings-2-Rings with Bling Tue. June 5, Petticoat Cuff Wed. June 6, Three Stone Ring Wed. June 6, Daisy Chain Pendant Wed. June 6, Jump Rings with Bling Thu. June 7, Stone Garden Cuff Thu. June 7, Playing with Fire Fri. June 8, Gypsy Woman Cuff Fri. June 8, Groovy Cuff and Pendant Sat. June 9, Metal Morphosis Ring Sat. June 9, Lasso Ring Sat. June 9, Inked Sun. June 10

Shiba, Yuko

TOHO BEADS Presents: Corncob Brooch Fri. June 8, TOHO BEADS Presents: Ladder Necklace Sat. June 9

Shibona, Jennifer

3-D Lizard Pin Sat. June 9, Beaded Beads Sat. June 9

Shimon, Miriam

Starlight Voyage Necklace Sat. June 9, Bella Mia Sun. June 10

Skigen, Deedee

Knights Feast Wed. June 6, Ink Blot Sat. June 9, Ocean Breeze Sun. June 10

Smith, Naomi

Petite History Cuff Sun. June 3, Native Strawberry Dreams Sun. June 3, We Remember: Embossed Beaded Poppy Mon. June 4, Finders Keepers: Found Objects Bracelet Tue. June 5

Solomons, Ellen

The Peyote Beaded Button: An Element in Design Sun. June 3, The Beaded Bowl: A Primer Mon. June 4, Painting with Seed Beads Tue. June 5, The Beaded Doll: A Primer Wed. & Thu. June 6 & 7, Pumpkin Box: A Peyote Beaded Vessel Fri. June 8, Flow-

ers for Pondo Sat. June 9

Soucy, Mary

Dionysus Descending Necklace Fri. June 8, Red Carpet Earrings Sat. June 9, Rhinestone Ball Necklace Sat. June 9, Patchwork Rhinestone Bracelet Sun. June 10

Sparidaans, Cora

The BeadSmith Presents: Maitiki Tue. June 5, The BeadSmith Presents: Sophia Wed. June 6, The BeadSmith Presents: Mary Rose Thu. June 7, The BeadSmith Presents: Giselle Fri. June 8, The BeadSmith Presents: Miss Daisy Sat. June 9

St. Jean, Kim

Vine and Grapes Pendant Sun. June 3, Mirror Image Earrings Sun. June 3, Stonehinge II Mon. June 4, Solar System Earrings Mon. June 4, Hidden Message Hinged Pendant Tue. June 5, Adjustable Button Pearl Ring Tue. June 5, Sterling Feather Cuff Wed. June 6, Sticks and Stones Earrings Wed. June 6, That's a Wrap Thu. June 7, 3-D Pendant Fri. June 8, Lovin' Leather Bracelet Sat. June 9, Solar System Earrings Sat. June 9, Sterling Name Pendant Sun. June 10

Stanley, Tracy

Rivets: Cold Connections and More Wed. June 6, Let's Color It! Thu. June 7, A Day of Earrings Fri. June 8, Saltwater Metal Etching Sat. June 9

Stephan, Betty

Oh, That Fringe! Sun. June 3, Mariposa Bead Embroidered Cuff Mon. June 4, Coral Reef Bead Embroidered Cuff Tue. June 5, Nightingale Necklace Thu. June 7

Stevens, Ronda

Captured Helm Sun. June 3, Concentricity Earrings Sun. June 3, TNT Bracelet Sun. June 3, Twisted Wrap Bracelet and Ring Mon. June 4, Jacobs Ladder Bracelet

Mon. June 4, Simple Elegance Bracelet Tue. June 5, Harlequin Bracelet Wed. June 6

Suto, Kimie

TOHO BEADS Presents: Basket Weave Wide Bracelet Wed. June 6, TOHO BEADS Presents: Rasen Fri. June 8

Sweet-McNamara, Amee K.

Fifty Shades of Pai (sley) Fri. June 8, Indulgence Earrings Sat. June 9

Sydorenko, Alexandra

Bead Point Embroidered Clutch Sun. June 3, Cattleya Orchid Brooch/Pendant Mon. June 4, Bobby Beads Presents: The Charm of Autumn Mon. June 4

T

Takagi, Hiroe

TOHO BEADS Presents: Dahlia 2 Sun. June 3, TOHO BEADS Presents: Jewel Bracelet Sun. June 3, TOHO BEADS Presents: 2 Way Jewel Watch Bracelet Tue. June 5, TOHO BEADS Presents: Ribbon Flower Earrings Tue. June 5

Tang-Lim, Helena

The BeadSmith Presents: Scheherazade Tue. June 5, The BeadSmith Presents: The Renaissance Cuff Wed. June 6, The BeadSmith Presents: The Amphora Thu. June 7

Thee, Michael

Stacking Ring Sampler Tue. June 5, Silverwing Pierced Pendant Wed. & Thu. June 6 & 7, Past Present Future Ring Wed. June 6, Step Up Your Bezels: Raised Bezel Ring Fri. June 8

Thomas, Lori

Colorful Metal: Easy Painting with Alcohol Inks Sat. June 9, Embossed Bezels with Pizazz Sat. June 9, Colorful Metal: Easy Painting with Alcohol Inks Sun. June 10

Thompson, Kelly

Textured Borders Bracelet Wed. June 6, Desert Lily Pendant Sat. June 9, Pincushion Pendant Sun. June 10

Thompson, Liz

Princess Maya Pendant Wed. June 6, Tzarina Pendant Thu. June 7, Get Crowned! Fri. June 8

Thompson, Sarah

Tempest Clasp Sun. June 3, Embrace Ring Sun. June 3, Tidal Wave Bracelet Mon. June 4, Cascade Pendant Tue. June 5, Lorelei Pendant Wed. June 6, Cosmic Bangle Thu. June 7, Aries Pendant Fri. June 8, Tendril Earrings Sat. June 9, Decorative S-Clasp Sat. June 9, Crescent Moon Pendant Sun. June 10

Tiry, Patty

Temptress Bracelet Sun. June 3, Enchanted Sorceress Necklace Sat. June 9, Cecilia Necklace Sun. June 10

Toda, Hiroko

TOHO BEADS Presents: Casa-blanca Lily Tue. June 5

V

Van Antwerp, Kim

Flying Five Wing Cocktail Ring Fri. June 8, Sculptural Felted Bracelets Sat. June 9, Warped Squares and More Workshop Sat. June 9

Vang, So

Southwestern Boho-Inspired Bib Necklace Sat. June 9, Diamond Duo Hoop Frame Earrings Sun. June 10

Venturoso, Leslie

Arabesque Collection: Arabesque Necklace Sun. June 3, Show Your Colors Cuff Sun. June 3, Reversible Cosmos Tassel Necklace Mon. June 4, The Hannah Lariat Tue. June 5, Fantasy Flowers Pendant, Brooch, or Cuff Wed. June 6, Arabesque

Collection: Quatrefoil Cuff Thu. June 7

Vezina, Tory

Natural Wonder Fishtail Wrap Bracelet Sat. June 9, Ocean Tide Gemstone and Macrame Wrap Bracelet Sun. June 10

Vinci, Monica

Potomac Bead Company Presents: The Moon in the Starry Sky Sun. June 3, Potomac Bead Company Presents: Fashion Earrings Sun. June 3, Potomac Bead Company Presents: Laura Bracelet Mon. June 4, Potomac Bead Company Presents: Peacock Feather Earrings Mon. June 4, Potomac Bead Company Presents: Enjoy Bracelet Tue. June 5, Potomac Bead Company Presents: Martina Wed. June 6

Vinnere Pettersson, Olga

The BeadSmith Presents: Veronique: A Soutache Pendant Sun. June 3, The BeadSmith Presents: Honeycomb Bracelet Sun. June 3

Violante, Jolanda

Potomac Bead Company Presents: Venezia Sun. June 3, Potomac Bead Company Presents: Lovely Drops Sun. June 3, Potomac Bead Company Presents: Christmas Eve Mon. June 4, Potomac Bead Company Presents: Ring a Ring O' Roses Tue. June 5

W

Watson, Francesca

The Big A** Ring Wed. June 6, The Letty Ring Thu. June 7, Garden Cuff Fri. June 8, Romancing the Stone Sat. June 9

Watts, Agnieszka

Wild Blackberry Sun. June 3, Scottish Heather Sun. June 3, Aurora Borealis Mon. June 4, Marigold Meadows Necklace Tue. June 5

Weinbaum, Doris

Three-Sided Right-Angle Weave

with a Pinch Wed. June 6, San Clemente Links Thu. June 7

Whiting, Diane

Dancing Along the Seine Mon. June 4, Tassellariat Tue. June 5, High Society Wed. June 6

Wohlgemuth, Mary

Stacking Ring Sampler Tue. June 5, Silverwing Pierced Pendant Wed. & Thu. June 6 & 7, Past Present Future Ring Wed. June 6, Step Up Your Bezels: Raised Bezel Ring Fri. June 8

Wojciechowski, Susan

Appliqued, Embroidered, and Embellished Wool Beads Mon. June 4

Y

Yaeger, Mary

Posh Pod Pendant and Chain Sun. June 3, Solara Petal Bracelet Sun. June 3

Yamada, Emi

TOHO BEADS Presents: Tsunami Flower Bead Embroidery Pendant Sun. June 3, TOHO BEADS Presents: Shining Necklace Mon. June 4

Youngblood, Gwen

Riveted Chain Tue. June 5, Fused and Riveted Wed. June 6, Layered and Riveted Thu. June 7, Bezels and Borders Fri. June 8, Patchwork Silver Pendant Sat. June 9

Yuhr, Lynn

Midnight Fiesta Sun. June 3, Three in Three Earrings Sun. June 3, Making Your Mark with Kandinsky Bracelet Mon. June 4, Lacewing Amphoras Mon. June 4, Channeling Mondrian Pendant Tue. June 5

Z

Zeiner, Laura

Pure Moodiness Bracelet Sun. June 3, Geometric Lace Necklace Sun. June 3, Out on a Limb Necklace Mon. June 4

Souvenirs

Preorder all souvenirs for the best selection and availability. There are limited offerings at the Show, and many items sell out during the Thursday Private Shopping Preview. Don't be disappointed! Order now!



2018 Show T-Shirt

Small: 65214S
Medium: 65214M
Large: 65214L
XL: 65214XL
XXL: 65214XXL
XXXL: 65214XXXL
\$17.95
Color: Raspberry
Sizes are unisex sizing.



2018 Show Pin

65217 • \$6.00
1" diameter circle



2018 Commemorative Bead

65215 • \$65.00
Size: 1" sphere (approximate)
This year's bead is by glass artist, Aja Vaz.



Beading Mat

65095 • \$16.95
Material: Velveteen
Color: Gray and black
Size: 8.5" W x 8.25" L x .75" H



2018 Show Tote

65216 • \$7.95
Fabric: Jute
Color: Pink with khaki straps
Size: 12" W x 16" H



Deluxe Store and Tote

65209 • \$31.99
Material: Microfiber
Color: Gray and pink
Size: 10.25" W x 13.5" L x 8" H



Crafter's Shoulder Bag

65211 • \$34.99
Material: Polyester
Color: Aqua
Size: 15.5" W x 17" H



Night Shirt

65204 • \$27.95
L/XL and 2XL/3XL
Fabric: 100% cotton
Color: Bright green



Flame-Resistant Jeweler's Workshop Apron

65077 • \$29.95
Fabric: Flame-resistant
Color: Blue



Bead Dish

65047 • \$7.95
Material: Ceramic
Color: White
Size: 5" round

Competitions

BeadDreams International Jewelry Artistry Awards

New Categories in 2018! Please read carefully.

Finished Jewelry

Submit jewelry of any kind or an ensemble of jewelry. Materials can include, but are not limited to, seed beads, crystals, glass beads, semi-precious stones, found objects, or other bead-related media.

Sponsor:



Grand Award:

\$1,000 Gift Certificate

Honorable Mention:

\$500 Gift Certificate

Objects & Accessories

Submit non-jewelry items or accessories, including, but not limited to, sculptures, purses, shoes, wall hangings, dolls. Materials can be any bead-related media.

Grand Award:

\$1,000 Gift Certificate

Honorable Mention:

\$500 Gift Certificate

People's Choice

Vote online and onsite at the Bead&Button Show for your favorite jewelry artist.

Sponsor:



Award:

\$500 Gift Certificate

Young Reader

Submit jewelry, accessories, or objects including single pieces or ensembles, sculptures, wall hangings, purses, shoes, dolls. Materials can be any bead-related media. Open to jewelry makers age 25 years and under.

Sponsor:



Award:

\$500 Product Package

Metal Jewelry Artistry Awards

NEW AWARDS PROGRAM IN 2018!

Metal

Submit handmade jewelry, accessories, sculptures, and more made predominantly with metal. Some cast or prefabricated elements are permitted, but the primary methods used must be in fabrication techniques.

Sponsor:

Contenti

Grand Award:

\$1,000 Gift Certificate

Honorable Mention:

\$500 Certificate

Student Metal and Wire

Submit handmade jewelry, accessories, sculpture and more made predominantly with metal and/or wire. Some cast or prefabricated elements are permitted, but the primary methods used must be in fabrication techniques.

Grand Award:

\$500 Gift Certificate

Honorable Mention:

\$250 Gift Certificate

Wire

Submit jewelry, accessories, handmade beads, jewelry-related objects, and sculpture predominately made with wire.

Sponsor:



Grand Award:

\$1,000 Gift Certificate

Honorable Mention:

\$500 Gift Certificate

For more information and to enter, visit BeadandButtonShow.com
Questions? Contact us at customerservice@beadandbuttonshow.com

Hotel and Travel Information

Milwaukee, the largest city in the state of Wisconsin and the 31st largest city (by population) in the United States, is located on the shores of Lake Michigan.

Once famous for its breweries and factories, today the greater Milwaukee area offers arts and entertainment, an exciting variety of shopping choices, and eclectic and ethnic dining at all price levels. Milwaukee's big-city advantages and old-world charm make it a great place for Bead&Button Show attendees to visit. Welcome to Milwaukee!

Show Host Hotel: The Hyatt Regency Milwaukee

The Hyatt Regency is located in the heart of downtown Milwaukee, connected by skywalks to the Wisconsin Center and the shops of Grand Avenue Mall. The scenic Riverwalk is also one block away. The Hyatt is the most convenient hotel for Show attendees; all pre-conference workshops and a large percentage of general education classes are held there. There is complimentary Wi-Fi in the hotel lobby and all guest rooms have Wi-Fi as well as refrigerators.

Hyatt Regency Hotel – Milwaukee

333 W. Kilbourn Avenue
Milwaukee, WI 53203
Phone: 888-421-1442

Room Block Name:
Bead&Button Show

Room Rate:

\$152 for Single, Double, Triple, or Quad
(Request a king-size bed or two double beds in a room.)

Show Host Hotel: The Hilton Milwaukee City Center

The Hilton Milwaukee City Center hotel is a classic art deco hotel with rich furnishings and distinctive architecture built in 1927. It is located on Wisconsin Avenue and connects by skywalk to the Wisconsin Center. The Hilton is pet-friendly.

Hilton Milwaukee City Center

509 W. Wisconsin Avenue
Milwaukee, WI 53203
Phone: 414-271-7250 – Use this number for reservations only.
Ask for the Bead&Button Show Rate.

Room Rates:

\$157 per night for Single and Double

Book
Online
Today!



Wisconsin Center



Hyatt Regency Hotel



Hilton Milwaukee Hotel

Book your room for the Show as soon as possible. The room blocks at the Show host hotels are available now; you don't have to wait until Show registration opens to make room reservations.

A complete hotel list is available on BeadandButtonShow.com.

Air Travel to Milwaukee

We have negotiated special deals with United Airlines and Delta Airlines for travel to Milwaukee.

United

Book online at United.com and enter Offer Code ZE83863859 in the Offer Code box when searching for your flights.

If booking through a travel professional or United Meetings (800-426-1122) please give the following information:

Agreement Code: 863859
Z Code: ZE83

Outside the U.S., call your local United Airlines reservation office.

Delta

Reservations and ticketing are available via delta.com/meeting. Select Book A Trip then enter the Meeting Event Code NMR5F in the box provided.

Reservations may also be made by calling Delta Meeting reservations at 800-328-1111 Monday – Friday, 7 a.m. – 7 p.m. CT.

Rideshare

Both Uber and Lyft are available for direct pickup at Milwaukee's General Mitchell International Airport.

Airport Shuttle/Van Service

GO Riteway offers fast and reliable service from Milwaukee's General Mitchell International Airport to all downtown hotels and is less expensive than regular taxi fares.

For general information, please visit goriteway.com and use code BB, or call GO Riteway at 800-236-5450 and mention code BB. Reservations must be made at least four hours in advance of service to receive the discounted \$27 round-trip rate.

BeadandButtonShow.com

SHIPWRECK BEADS

**The World's Largest
Selection!**

Wholesale/Retail
Sales (800)950-4232
Info (360)754-2323

**8560 Commerce Place Dr NE
Lacey, WA 98516**



shipwreckbeads.com



Meet the Teachers June 8, 2018!
Sponsored by Fire Mountain Gems and Beads
Treasure Bag compliments of Swarovski Create Your Style

www.firemountaingems.com

One Fire Mountain Way, DEPT C018
Grants Pass, OR 97526-2373
1-800-355-2137

Visit us
at Booth #411 for live
demonstrations

**America's Favorite
Beading and Jewelry
Supply Company®**

**You supply the creativity,
we supply everything
else!®**

Simona Svezia, Italy
perlineebijoux.blogspot.it
Grand Prize Gold Medal Winner,
2016 Jewelry-Making Contest
with Swarovski® crystals

Copyright
Fire Mountain Gems
and Beads© 2017

Swarovski®
Authorized Reseller