



**LED KINTA**



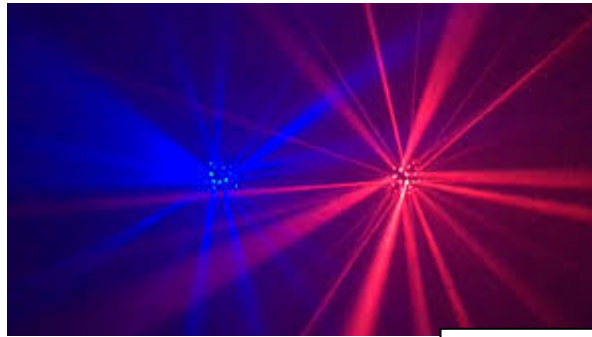
*professionalsounds.com*  
 EXPECT THE BEST DIGITAL LIGHTING  
 TEXT: 419.356.6000  
 419.385.6400 OR 734.847.4747



**LED SWARM**



**LED FUSIONS\***



**LED PULSE**



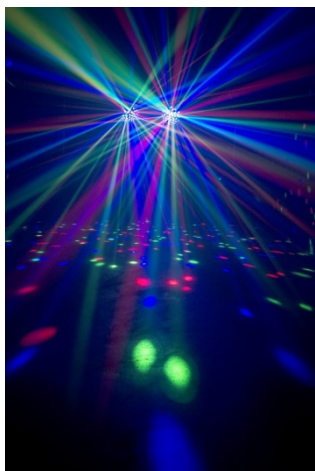
**LED VERTIGO**



**LED UPLIGHTING\***



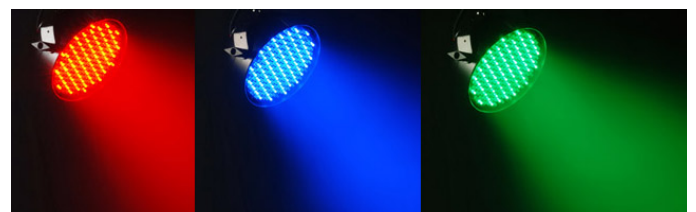
**LED UPLIGHTING\***



**ELIMINATOR**



**GOBO PROJECTORS\***



**LED SPLASH**

\*COUPONS OR GIFT CERTIFICATES CANNOT BE USED FOR UPLIGHTING, FUSION, OR THE GOBO PROJECTORS.



**LED MOONFLOWERS**



**TRIPLE DERBYS**



**KINTA**



**SUPER LIGHT FLOWER**



**MIRROR BALLS**



**SPOTLIGHTS**



**SCENTED FOG**



**WHITE LIGHT FLOWERS**



**BUBBLE MACHINES**

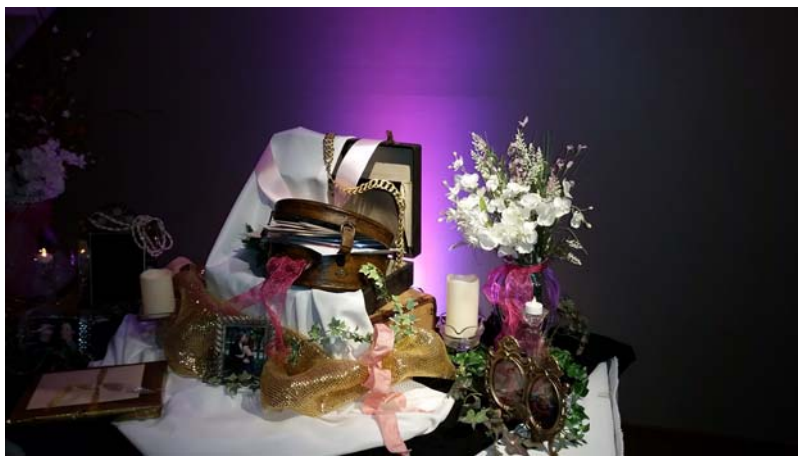


**750 WATT STROBE**



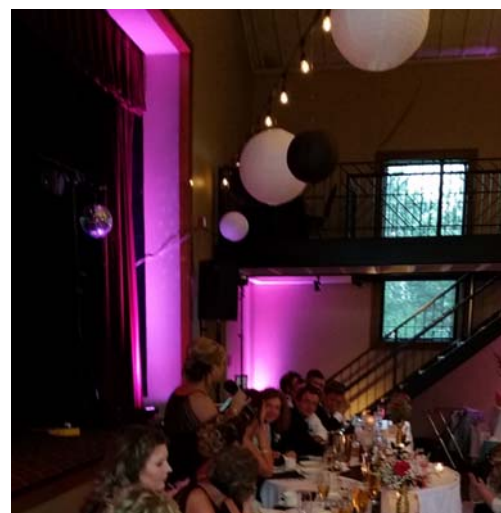
## DIGITAL UPLIGHTING SAMPLES

*professionalsounds.com*



**PS**  
**PROFESSIONAL**  
**SOUNDS.**

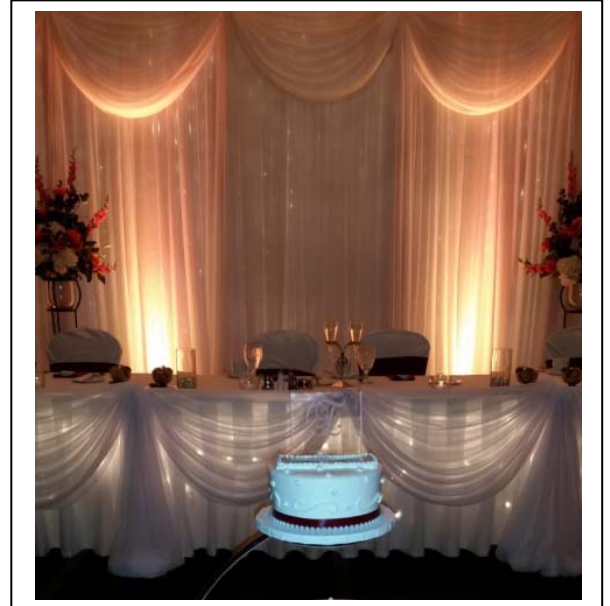
Color: Hot Pink  
Venue: Nazareth Hall  
Lady Glen Room





*professionalsounds.com*

## DIGITAL UPLIGHTING SAMPLES



Uplighting Color: Lemon Chiffon

Venue: Hilton Garden Inn

Perrysburg, Ohio

Event: Ceremony and Reception.

You can create your own color with over 16 million different choices available. Contact us with any questions and expect the best digital uplighting from Professional Sounds.





## DIGITAL UPLIGHTING SAMPLES

*professionalsounds.com*



Uplighting Color Choice: Dark Violet  
Venue: Hilton Garden Inn Perrysburg, Ohio



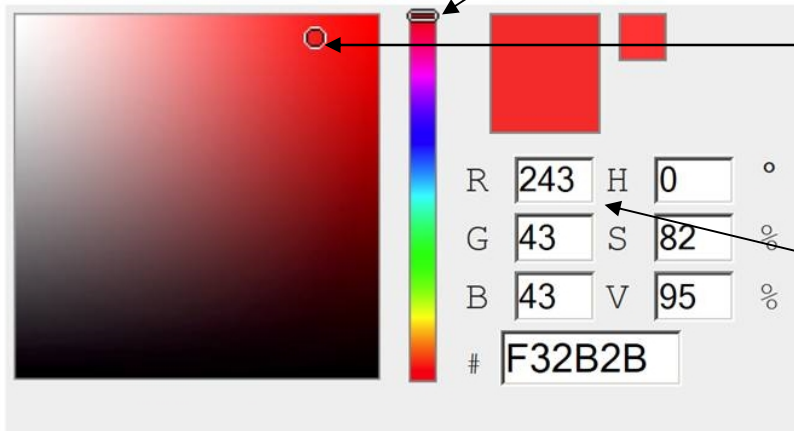
## CHOOSING YOUR UPLIGHTING COLOR:

1. Click on this link below and go to the RGB color creator:

[http://www.rapidtables.com/web/color/RGB\\_Color.htm](http://www.rapidtables.com/web/color/RGB_Color.htm)

Here is what the table looks like:

### RGB color picker



2. Pick a basic color. This bar moves up or down. The red basic color is on top, then pink, then blue, then white, then green, then yellow and it goes back to red at the bottom. In this example, the color bar is on the red shade at the top of the color bar.

3. Once you pick the core color, you can change that color by moving this circle 256 different ways just on this one color that you originally picked. When you pick the exact color, just provide the numbers in the boxes to choose that exact color.

In this example, you would tell me the following numbers and letters:

R243  
G43  
B43  
#F32B2B

And that is all that we would need to create the color!

4. 16.9 million color choices are available on this chart for your event.

### Other Options:

- ✓ Hold up a swatch or a fabric sample near this chart to help you match the color perfectly.
- ✓ Pick one of the most popular colors by going a little further down the page to the **RGB Color Table** section, and view the 250 most popular colors.
- ✓ Share with us the color code from the bridal or tuxedo shop and we can match it perfectly.
- ✓ Have us contact the business to acquire the color codes for you!
- ✓ Please call or text if you have any questions! TY! Doug 419-356-6000 [toledosbestdj@gmail.com](mailto:toledosbestdj@gmail.com)
- ✓ Click here for a direct link to our lighting and special effects online.