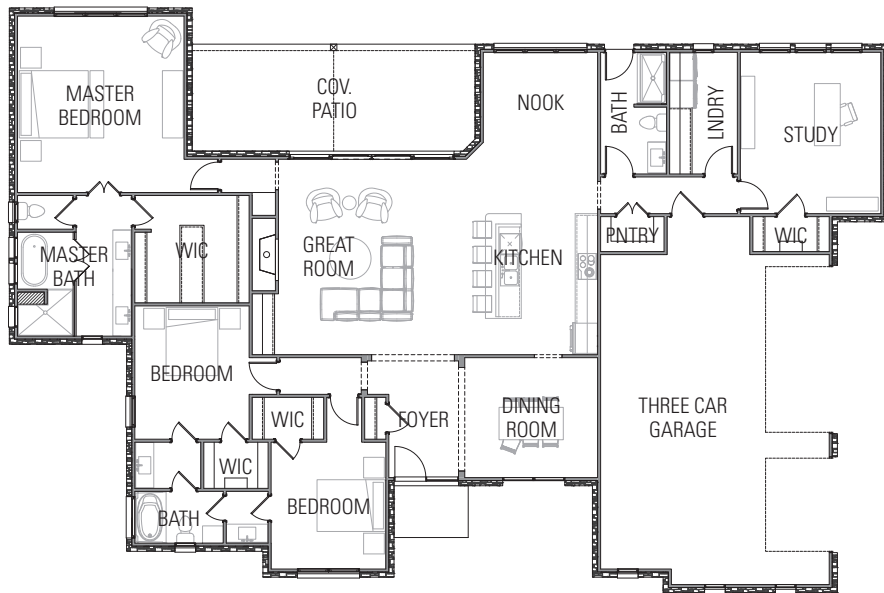




THE LOOKOUT

FLOOR PLANS | 2,776 SQ. FT.

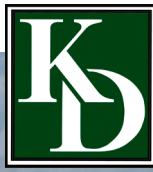


FEATURED AMMENITIES

- White oyster stone and stucco exterior elements
- Double glass and iron entry door
- Clerestory windows in Kitchen/Great Room
- Double sliding glass door (16') in Great Room
- 3 Bedrooms, 3 Baths
- Open concept Kitchen/Great Room with oversized island
- Modern flat panel painted cabinets with white quartz countertops
- Professional grade built-in appliances
- 60" lineal gas fireplace with porcelain surround
- Covered front and back porches
- Nook and Study
- Three car garage



KEEWAYDIN
DEVELOPMENTS, LLC



EXTERIOR FEATURES

- White oyster stone and stucco exterior elements
- Asphalt 30 architectural grade roof shingles and gutters
- Double glass and iron entry door
- Anderson 400 series windows
- Double sliding glass door (16') in Great Room
- Landscaping with sprinkler system
- Concrete driveway

INTERIOR FEATURES

- Zoned high efficiency forced-air electric heat and air conditioning
- 200 amp electrical
- Can lights, ceiling fans, and light fixtures per electrical plan
- Drywall walls and ceilings
- 2'x4' white porcelain flooring
- Open cell foam insulation in both walls (R-13) and ceilings (R-23)
- 60" lineal gas fireplace with porcelain surrounding
- Modern flat panel painted cabinets with white quartz countertops
- Scalloped moracan backsplash and floating shelves in Kitchen
- Upgraded trim package featuring paint and stained designer element
- Professional grade built-in appliances
- Wet room with freestanding tub and walk-in shower in Master Bath
- Custom timber trusses (3) with steel plates