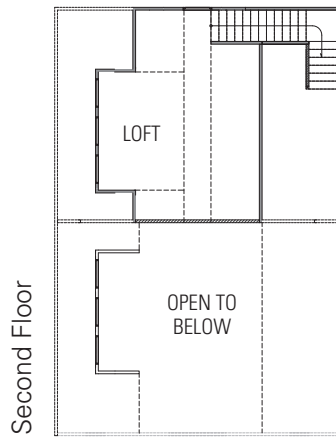
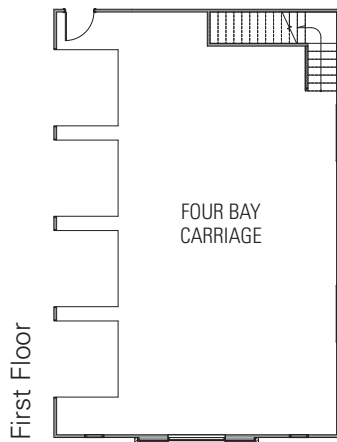
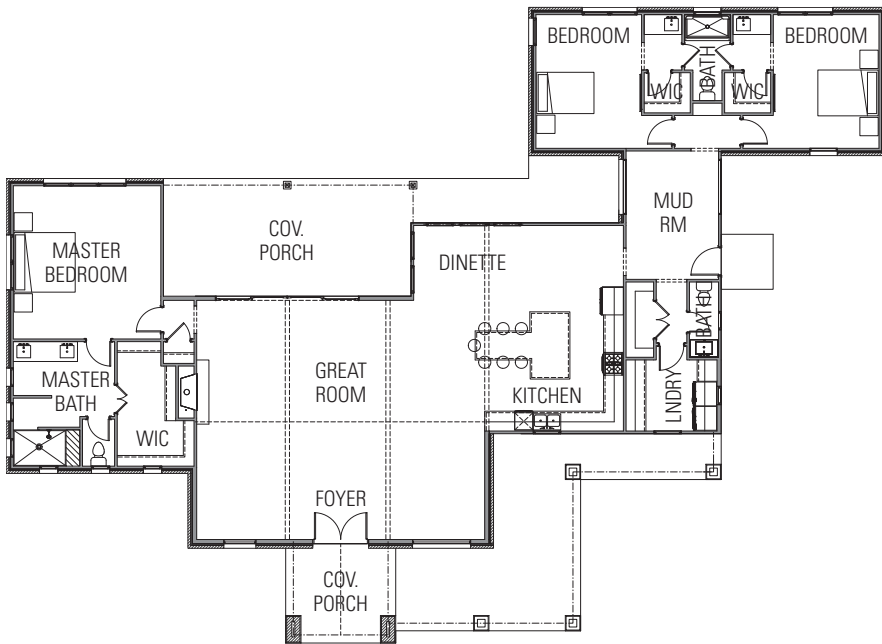


THE BODEN AT BELLA OAKS

FLOOR PLANS | 2,839 SQ. FT.



FEATURED AMMENITIES

- White Austin stone with rough cedar board and batton siding
- Double glass and iron entry door
- Double sliding glass door (16') in Great Room
- 3 Bedrooms, 2.5 Baths
- Open concept Kitchen/Great Room with oversized island
- Custom cabinetry with soft close drawers/doors from Moore's Custom Cabinets
- Stainless steel Café by GE appliances and stone countertops
- Full masonry fireplace
- Covered front and back porches
- Four bay Carriage House and Loft



KEEWAYDIN
DEVELOPMENTS, LLC



EXTERIOR FEATURES

- White Austin stone with rough cedar board and batton siding
- Asphalt 30 architectural grade roof shingles and gutters
- Double glass and iron entry door
- Pella 250 series windows
- Double sliding glass door (16') in Great Room
- Well (420') water allowance
- Septic system allowance (\$8,700)
- 250-gallon propane tank
- Landscaping allowance
- Sprinkler system allowance
- Concrete driveway allowance (40' from street)
- Four bay Carriage House and Loft

INTERIOR FEATURES

- Zoned high efficiency forced-air electric heat and air conditioning
- 200 amp electrical
- Can lights, ceiling fans, and light fixtures per electrical plan
- Drywall walls and ceilings
- Open cell foam insulation in both walls (R-13) and ceilings (R-23)
- Hard surface allowance (\$26,000 materials and labor)
- Wood grain porcelain flooring throughout
- Full masonry fireplace
- Stone/porcelain in bathrooms and shower enclosures
- Ceramic backsplash in kitchen
- Stone countertop allowance
- Painted wood trim
 - Two panel solid core shaker style doors
 - 1 x 4 Casing
 - 1 x 6 Base
 - Crown molding in bedrooms
- Custom cabinetry with full overlay doors and soft close drawers/hinges from Moore's Custom Cabinets
- Cabinet hardware, door hardware, towel bars and paper towel holder
- Professional grade built-in stainless steel Café by GE appliances (side-by-side refrigerator/freezer, oven/range, dishwasher, frontload washer/dryer)
- Delta plumbing fixtures and Kohler toilets
- Custom timber trusses (3) with steel plates

254.918.7500 | Office
630.327.8306 | Taylor Kanute
tkanute@keewaydindevelopments.com
www.keewaydindevelopments.com