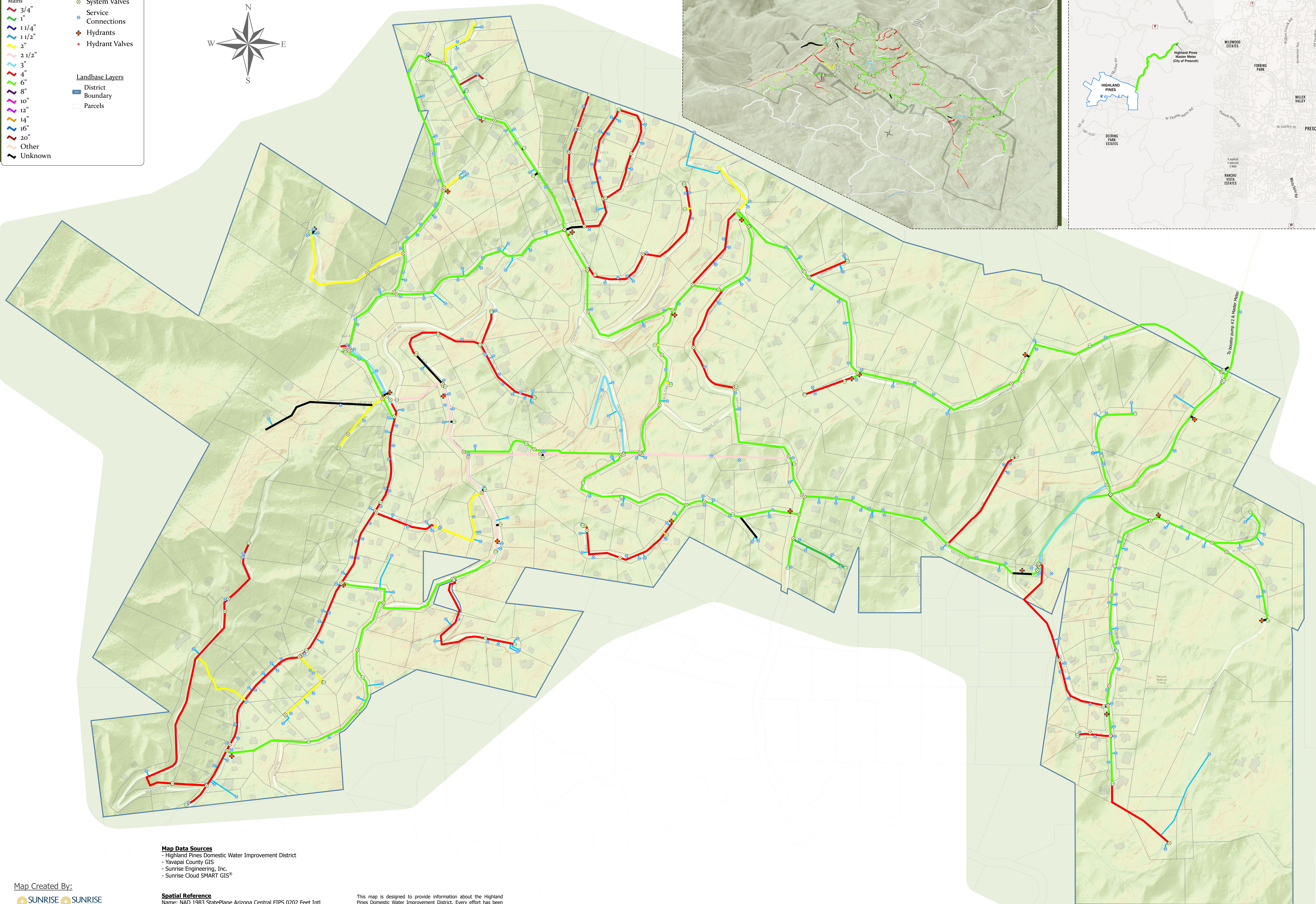
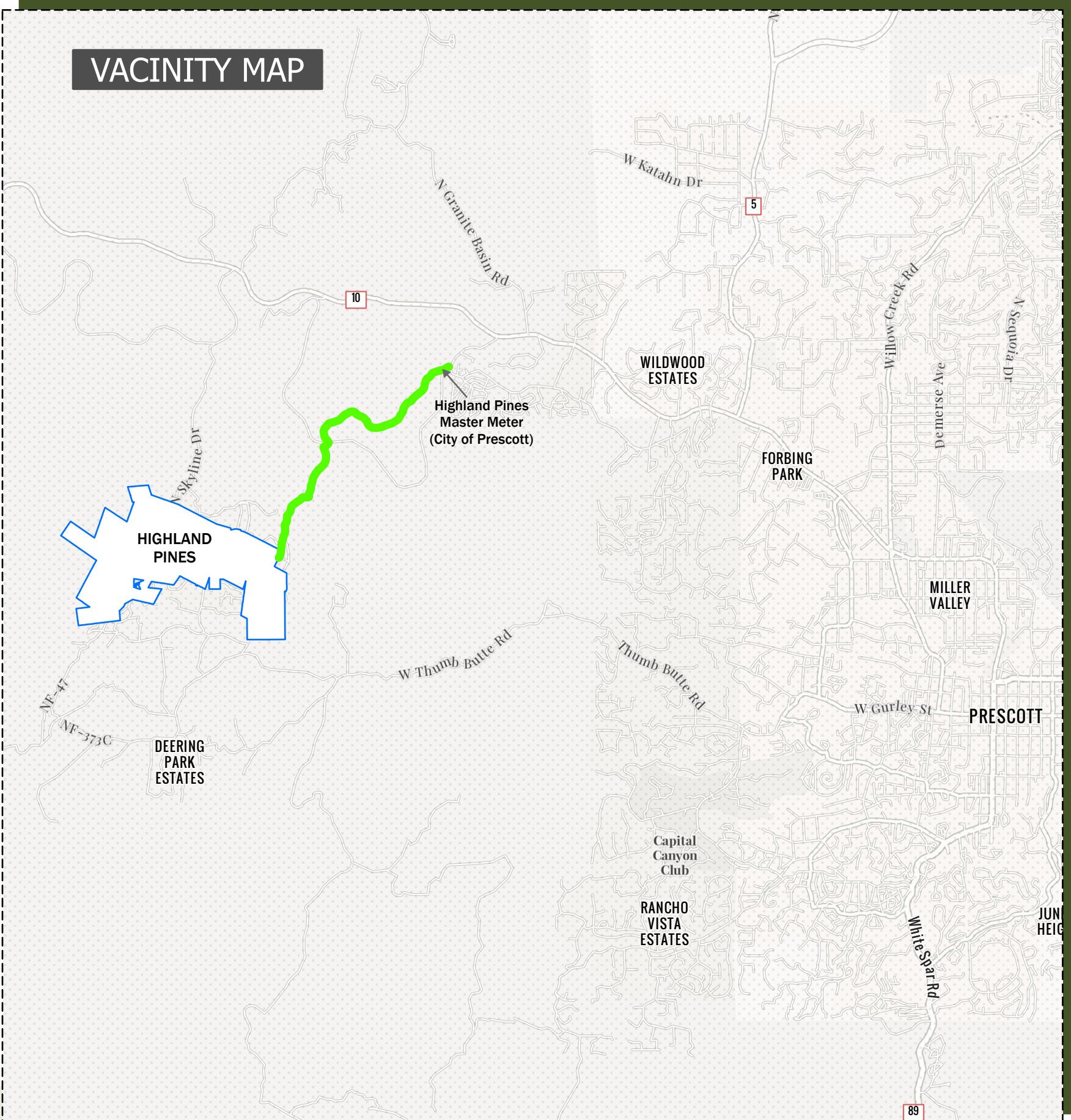
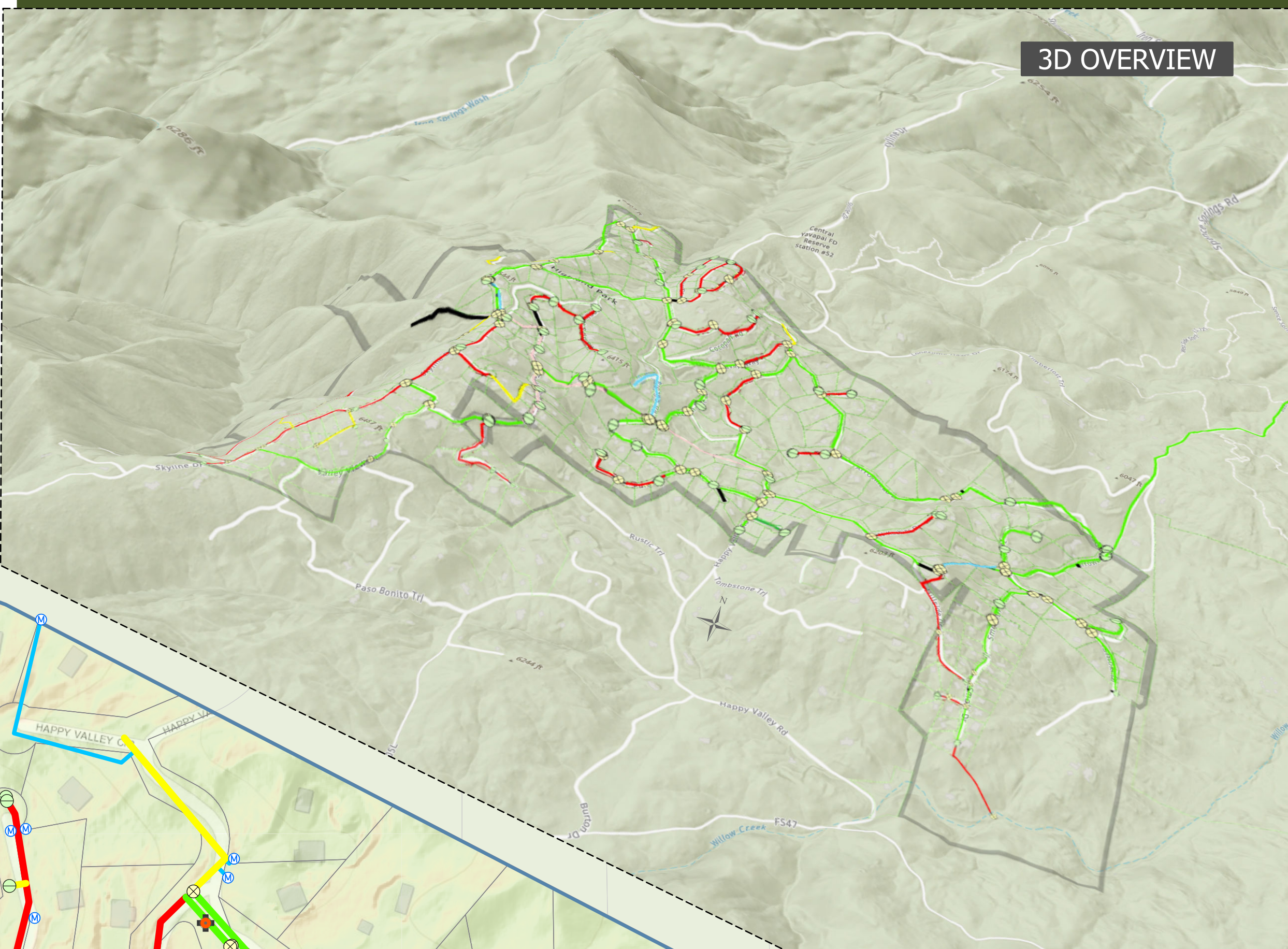
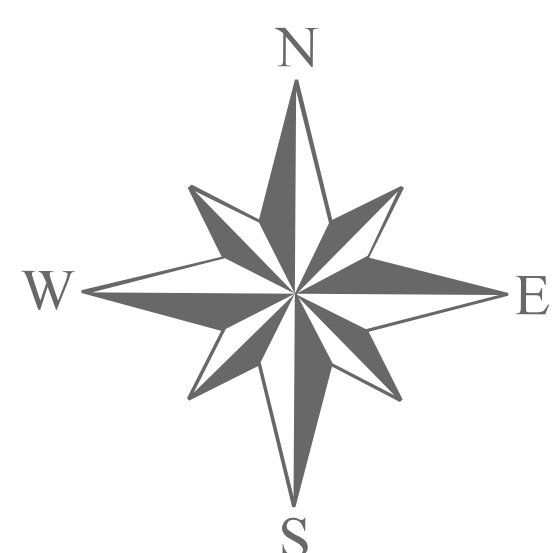


HPDWID CURRENT SERVICE AREA

- | Water Line Facilities | |
|-----------------------|---------------------|
| Lateral Lines | Control Valves |
| Mains | System Valves |
| 3/4" | Service Connections |
| 1" | Hydrants |
| 1 1/4" | Hydrant Valves |
| 1 1/2" | |
| 2" | |
| 2 1/2" | |
| 3" | |
| 4" | |
| 6" | |
| 8" | |
| 10" | |
| 12" | |
| 14" | |
| 16" | |
| 20" | |
| Other | |
| Unknown | |
-
- | Landbase Layers | |
|-------------------|--|
| District Boundary | |
| Parcels | |

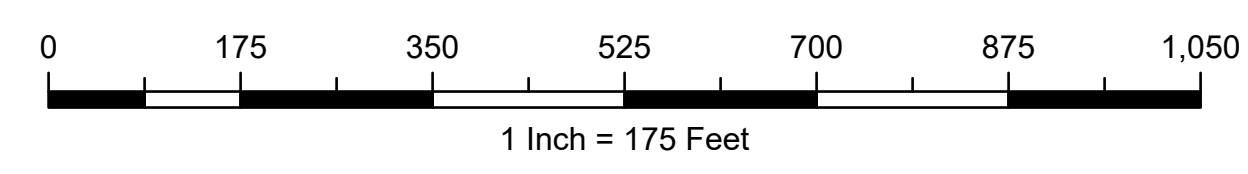


Map Data Sources
 - Highland Pines Domestic Water Improvement District
 - Yavapai County GIS
 - Sunrise Engineering, Inc.
 - Sunrise Cloud SMART GIS®

Spatial Reference
 Name: NAD 1983 StatePlane Arizona Central FIPS 0202 Feet Intl
 Datum: North American 1983
 Projection: Transverse Mercator

Customer Count at Time of Print: 354
 Date Printed: 4/29/2022 3:23 PM

This map is designed to provide information about the Highland Pines Domestic Water Improvement District. Every effort has been made to make this map as complete and accurate as possible. However, no warranty of fitness is implied. This map is for reference only and is not a legal document. The Highland Pines Domestic Water Improvement District and Sunrise Engineering, Inc shall have neither liability nor responsibility to any person or entity with respect to any loss or damage in connection with or arising from the information contained on this map.



HIGHLAND PINES DOMESTIC WATER IMPROVEMENT DISTRICT