

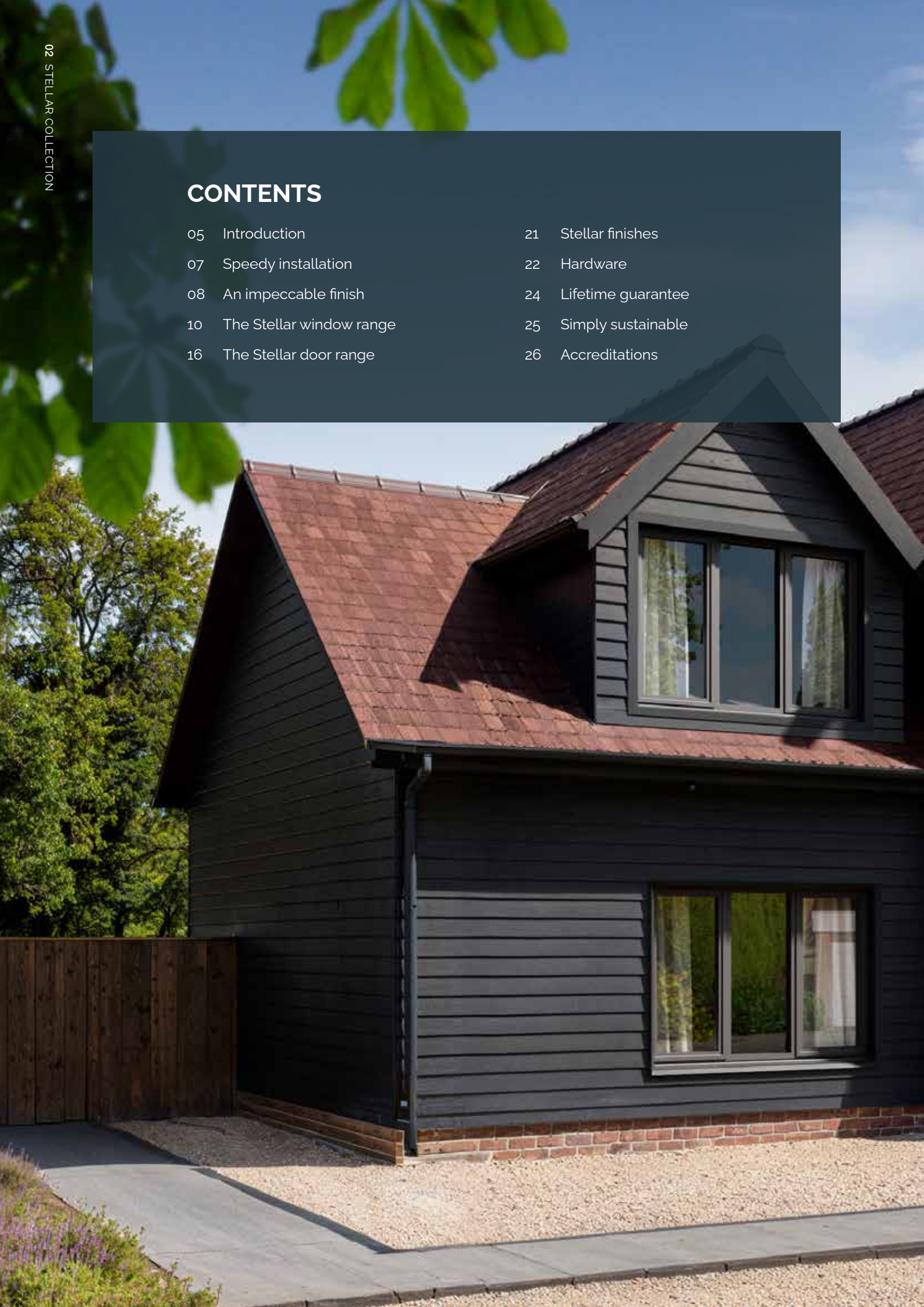


THE COMPLETE ALUMINIUM
WINDOW & DOOR
COLLECTION

stellarTM
ALUMINIUM SYSTEMS

CONTENTS

05	Introduction	21	Stellar finishes
07	Speedy installation	22	Hardware
08	An impeccable finish	24	Lifetime guarantee
10	The Stellar window range	25	Simply sustainable
16	The Stellar door range	26	Accreditations







Stellar is a multi-award-winning
Part L-compliant aluminium system
designed to redefine industry standards.

Stellar provides solutions to the typical problems fabricators face with other aluminium systems, enhancing the efficiency, cost-effectiveness and competitiveness in your operation. Stellar installs like PVC-U – there is no need for on-site scaffolding and its knock-in beads make it quick to glaze.

Stellar is a whole-house system and it looks like no other. The system is up to 30% slimmer than its main competitors, delivering the best sightlines for the bright, light look today's consumers demand, while its aesthetics are equally at home in contemporary and traditional properties. The slim sightlines and the fact it doesn't use dummy sashes mean it can reach WERs of Band A++ and it's Part L-compliant as standard in both new and existing buildings. It is secure, low maintenance and more sustainable too.

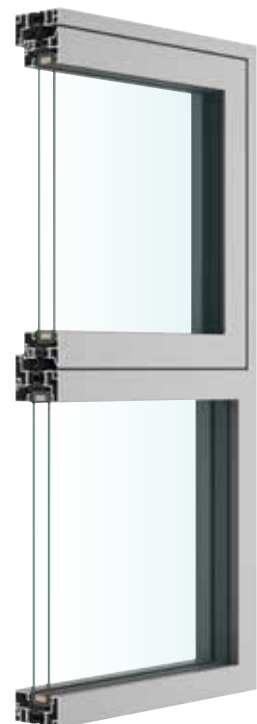




Speedy installation.

Great windows and doors shouldn't be hard to install, but unfortunately, many systems don't make the job easy. Stellar as quick and easy to install as PVC-U.

- Stellar uses patented knock-in beads and no wedge gaskets, so glazing is 30% faster.
- Flat, easy-clean rebates make glazing packers as easy to fit as PVC-U.
- Frames are flat backed, so easier to pack during installation.
- Extenders and couplers use sealing cord so no messy mastic is required to seal these joints.
- Dual skin rebates mean more robust dual chamber profiles, even over longer lengths, and a better long-term performance.
- Low thresholds can be replaced without disturbing the doorframe.



AN IMPECCABLE FINISH

Every element of our marine-grade QUALICOAT-approved state-of-the-art powder coating plant has been designed for excellence.

For example, there are short cycle times from pre-treatment to powder booth to reduce the risk of contamination and handling damage. And we use state-of-the-art powder coating processes throughout, including a fully automatic quick change powder booth with advanced product detection and automatic gun for superior quality.

We use a chrome-free pre-treatment system, keeping us ahead of legislative changes and delivering environmental benefits. And the consistency of finish we're able to deliver reduces scrap and wastage, further boosting Stellar's environmental credentials.





THE STELLAR **WINDOW RANGE**

Everything you need is included
in the Stellar collection.

The system is complete and has dedicated ancillary products, so whatever your customer is looking for, you've got the answer. Plus, it's Part L-compliant as standard across both new build and refurbishment projects, which makes life more straightforward.

The layout of windows, the number of fixed and opening panes, the simplicity of design or the extra details that give character – everything is adaptable, and every component is designed to work together.

Add in the wide range of powder-coated finishes and you have a flexible and adaptable range that's perfect for residential and commercial projects alike.

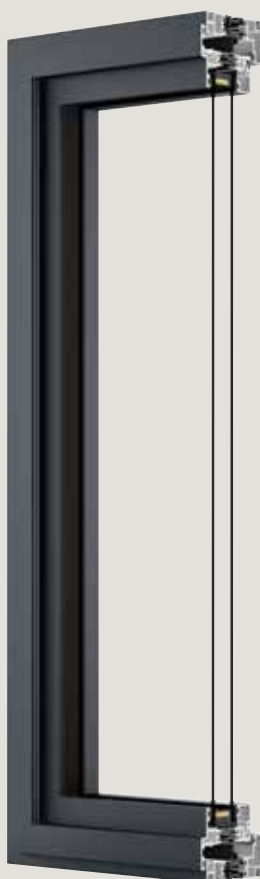


WINDOW TECHNICAL DETAILS

	Casement Window	Heritage Casement Window	Fully Flush Casement Window	Flush Tilt & Turn Window
Performance				
U-Value Double Glazing (without foam inserts)	1.4	1.4	1.4	1.4
U-Value Triple Glazing (without foam inserts)	1.1	1.1	1.1	1.0
WER	A++	A++	A++	A
Air (Pa)	600	600	600	600
Water(Pa)	600	600	600	600
Wind(Pa)	2000	2000	2000	2000
Dimensions				
Max Sash Width Top Hung	1221	1221	1221	1642
Max Sash Height Top Hung	1221	1221	1221	2442
Max Sash Width Side Hung	721	721	721	
Max Sash Height Side Hung	1321	1321	1321	
Glass	28, 32, 36	28, 32, 36, 44	28, 32, 36	28, 36, 44
Cill (mm)	100, 150, 200	100, 150, 200	100, 150, 200	100, 150, 200
Test Certifications				
PAS 24: 2022	As Standard	As Standard	As Standard	As Standard
Part L	✓	✓	✓	✓
Secured by Design	Option	Option	Option	Option
Document Q	✓	✓	✓	✓
Thermal break technology	✓	✓	✓	✓
Guarantee				
Yale Lifetime Security Guarantee	✓	✓	✓	
10 year mechanical performance guarantee	✓	✓	✓	✓
25 year surface finish guarantee (>5km from coastline)	✓	✓	✓	✓

Casement Window

The Stellar Casement Window expertly balances exceptional thermal efficiency with modern rebated aesthetics, making it the ideal choice for projects where both style and performance are paramount.



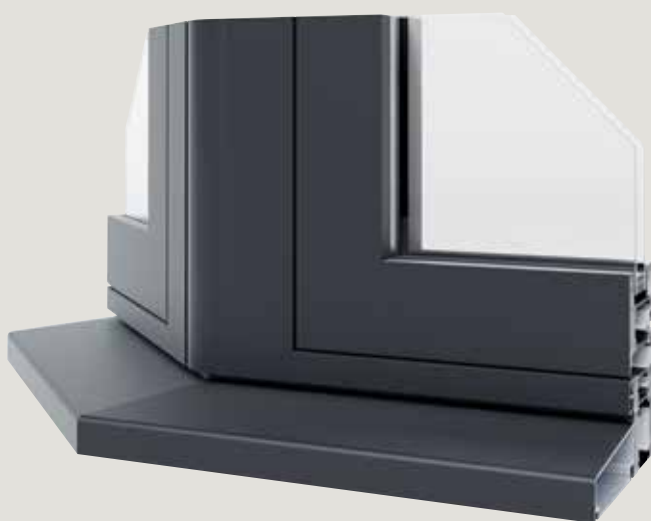
Heritage Casement Window

For projects requiring the classic look of steel windows without sacrificing modern performance, the Stellar Heritage Casement Window delivers the full advantages of the Stellar system, perfectly blending heritage style with contemporary functionality.



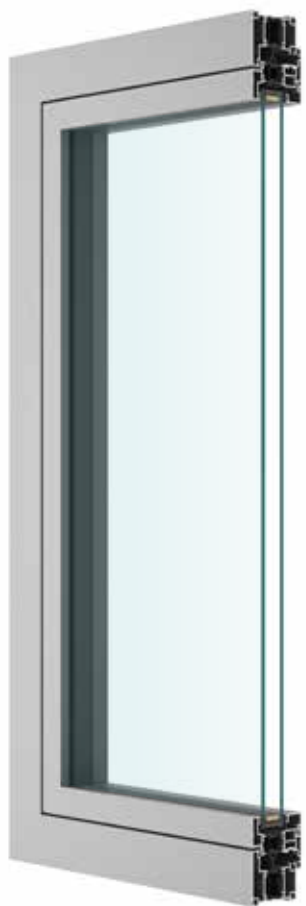
Fully Flush Casement Window

The Stellar Fully Flush Casement Window achieves a seamless, minimalist aesthetic, extending its streamlined profile to both the interior and exterior. This design embodies ultimate simplicity, perfectly complementing contemporary architectural styles.



Bay Window

Stellar provides complete solutions for bay and bow windows. The slimline aluminium frames create the illusion of space and create desirable modern spaces that maximise light and views.



Flush Tilt & Turn Window

The Stellar Flush Tilt & Turn Window features an exceptionally slim sash that lies perfectly flush with its frame, complemented by discreetly concealed gearing for a truly contemporary, streamlined aesthetic.



THE STELLAR **DOOR RANGE**

From robust entrance doors to elegant French doors, a sleek bifold, a stunning inline sliding door and an expansive lift & slide patio door, Stellar offers a solution for every style.

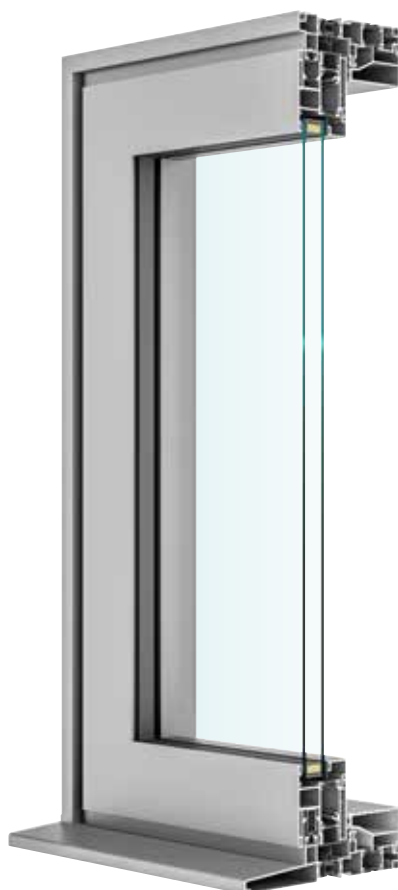
Stellar's trademark ultra-slim sightlines feature across all styles, maximising glass areas and creating a modern aesthetic with abundant natural light.

Plus, because they're all Part-L compliant as standard for all projects, you have the perfect whole-house solution.



DOOR TECHNICAL DETAILS

	Inline Sliding Door	Lift & Slide Door	Bifold Door	Flush Residential & French Door
Performance				
U-Value Double Glazing	1.4	1.6	1.4	1.4
U-Value Triple Glazing	1.0	1.2	1.0	1.0
WER	A+	A	A+	A+
Air (Pa)	600	600	300	300
Water (Pa)	200	250	300	150
Wind (Pa)	1200	1200	1200	1200
Dimensions				
Max Sash Width (mm)	1675	3350	1200	1000
Max Sash Height (mm)	2330	2675	2400	2400
Max Sash Weight (Kg)	175	300	140	
Overall width (mm)	6500	6500	Frame Jointer?	
Glass (mm)	8, 36, 44	28, 36, 44	28, 36, 44	28, 32, 36, 44
Cill (mm)	200, 222	225	100, 150, 200	100, 150, 200
Integrated Cill	Yes	No	Yes	No
Configurations	2, 3, 4 pane	2, 3, 4 pane	Upto 7 panes	1 or 2 pane
Test Certifications				
PAS 24: 2022	As Standard	As Standard	As Standard	As Standard
Part L	✓	✓	✓	✓
Document Q	✓	✓	✓	✓
Secured by Design	Option	Option	Option	Option
Thermal break technology	✓	✓	✓	✓
Guarantee				
Yale Lifetime Security Guarantee	✓		✓	✓
10 year mechanical performance guarantee	✓	✓	✓	✓
25 year surface finish guarantee (>5km from coastline)	✓	✓	✓	✓

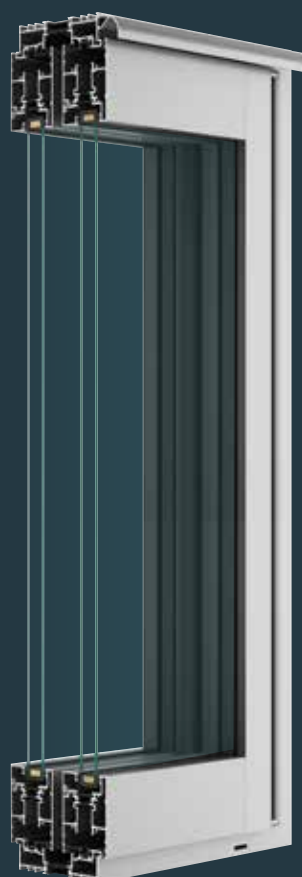


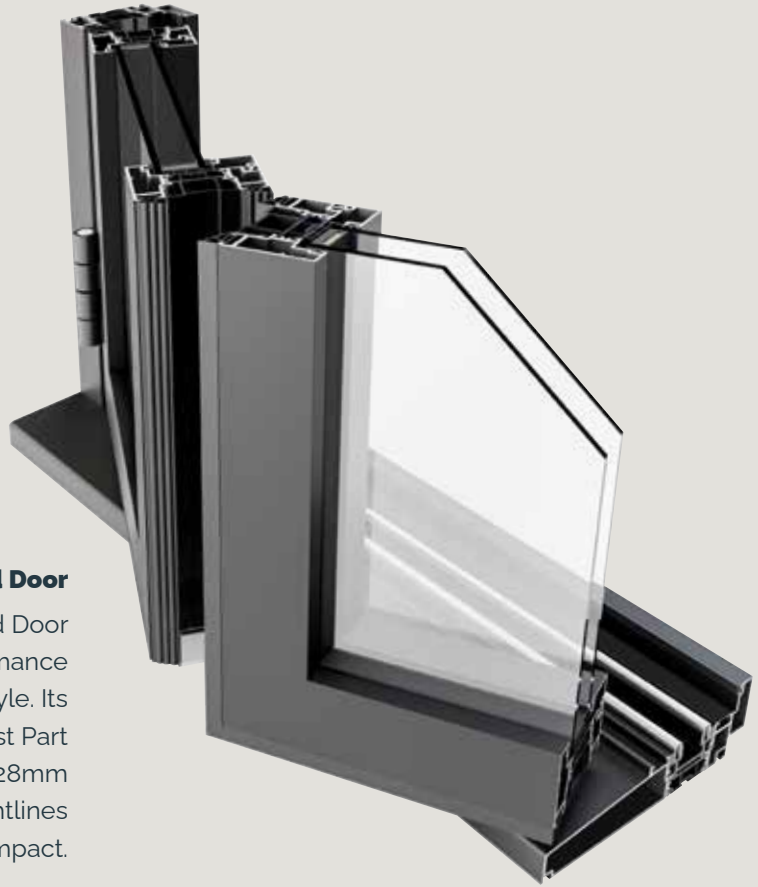
Inline Sliding Door

The Stellar Inline Sliding Door embodies minimalist elegance. Its ultra-slim 35mm interlock and sleek aluminium profiles create a seamless connection between indoors and out, maximising natural light and offering expansive views.

Lift & Slide Door

The Stellar Lift & Slide Door is designed for expansive openings. With sashes up to 3350 metres wide, it delivers impressive views and a sense of openness, while maintaining exceptional strength and performance.





Slimline Bifold Door

The Stellar Slimline Bifold Door delivers exceptional performance without compromising on style. Its quality design meets the latest Part L requirements with standard 28mm double glazing, while its slim sightlines create a stunning visual impact.



Flush Residential & French Door

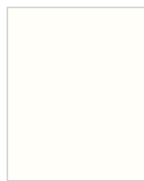
Stellar's highly configurable system allows you to tailor solutions for any project, from classic entrance doors to elegant French doors



STELLAR FINISHES

We know colour choice can make or break a project. That's why Stellar offers the five most in-demand colours **from stock**.

Stocked Colours



Signal White



Anthracite Grey



Anthracite Grey/
Signal White



Jet Black



Jet Black/
Signal White

Fast. Flexible. Flawless.

Need something bespoke? Our **in-house UK powder coating plant** is fully **QUALICOAT Seaside accredited**, giving you access to the entire **RAL colour spectrum**, custom gloss levels and dual-colour options, ensuring you can meet the unique aesthetics of every project.

All Stellar aluminium sections are finished in a tough, weather-resistant polyester powder coat that exceeds European standards and come with a guarantee up to 25 years. This gives you the reassurance of a high-quality product and low risk of potential callbacks.



HIGH-QUALITY HARDWARE

Stellar accommodates advanced hardware from leading suppliers, with every item matching the style and substance of the system itself.

Every hinge, espagnolette, lock and handle has been selected to be easy to work with and to deliver high security and long-term performance.





LIFETIME GUARANTEE

The Yale Lifetime
Security Guarantee.



Yale is acknowledged as the leading home security brand, with 98% brand recognition. Plus, its PAS 24 door and window hardware is covered by a Lifetime Security Guarantee that entitles homeowners to:

- up to £1,000 towards home insurance excess
- up to £1,000 towards repairs or replacements
- £1,000 break-in compensation
- up to £250 refund on call-out fees.



stellarTM
ALUMINIUM SYSTEMS

Terms and conditions apply





SIMPLY SUSTAINABLE

As an aluminium system, Stellar comes with a wealth of environmental advantages as standard because it has a longer lifespan and is infinitely recyclable.

But with Stellar, that's just the start.

Our manufacturing processes meet the requirements of the ISO 14001 standard for Environmental Management.

All our aluminum is UK-sourced, which significantly reduces transport emissions. Our system also uses less profile overall, and the pre-gasketing helps reduce waste. Furthermore, our finishing plant uses a chrome-free pretreatment process, minimising its environmental impact.

In use, Stellar's slim sightlines mean a reduced need for artificial light. And because insulation is a fundamental part of the system design, not an afterthought, the system meets the thermal efficiency requirements of Building Regulations without additional foams or expensive aerogels.

ACCREDITATIONS

Accreditations that are a credit - Stellar is a high-quality, high-performance system.

We design, model, prototype, test and refine constantly until we're completely satisfied. In-house laboratories control and monitor our production. Independent agencies have verified our results.

The result is an exceptional system that meets or exceeds every standard you and your customers expect. From Part L compliance as standard to PAS 24, Secured by Design and more, they're a reassuring sign of built-in quality.



KM 711705
BS 4873
Aluminium Window
System Supplier



KM 711706
BS 4873 / PAS 24
Enhanced Security
Aluminium Window
System Supplier



KM 711704
BS 4873 / PAS 24
Enhanced Security
Aluminium Window
System Supplier



Official Police Security Initiative



ALUMINIUM FEDERATION



Glass and Glazing Federation



Council for Aluminium
in Building
Member





Stellar Aluminium Systems is an aluminium profile system supplied to local independent manufacturers and installers who contract to install windows and doors. Stellar Aluminium cannot be held accountable for manufacture or installation by independent companies. All information in this publication is provided for guidance only and is given in good faith. As it is company policy to continually improve products, methods and materials, changes of specification may be made from time to time without prior notice. This statement does not affect your statutory rights. © Stellar Aluminium Systems. Part of the Epwin Group Plc. STE19079

stellar[™]
ALUMINIUM SYSTEMS