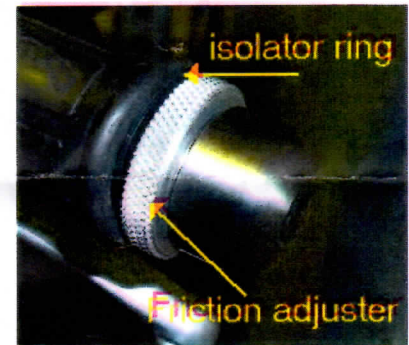


BAR END CRUISE CONTROL

- 1) Undo cross head bolt in the right hand bar end. You may have to hold the bar end in One hand whilst you undo it with the other
- 2) Place one of the plastic isolator spacers on the bar end and offer up the cruise control to the handlebar
- 3) Fit bolt and tighten up.

You may find the adjuster ring does not reach the throttle. If that is the case add another plastic isolator ring to the Assembly. If that STILL does not reach then the throttle assembly has been fitted too far on to the bar. It must be released and moved outwards a little



The staff and proprietor of Blackbird Spares will take no responsibility for any accident or damage caused by the fitting of any aftermarket components whether supplied by us or not.

THE LEGAL BIT !

Whilst this mod has been done by many many people world wide (probably well in the thousands now) over the past 9 years or so, for obvious reasons I nor any other member of Jaws Motorcycles can be held responsible for any outcome or issues resulting from the modification. If you modify your bike in ANY way our official line is that you do not ride it, merely use it for show. If you decide to ride your bike on the road or track you must do so at entirely your own risk and against our express advice