



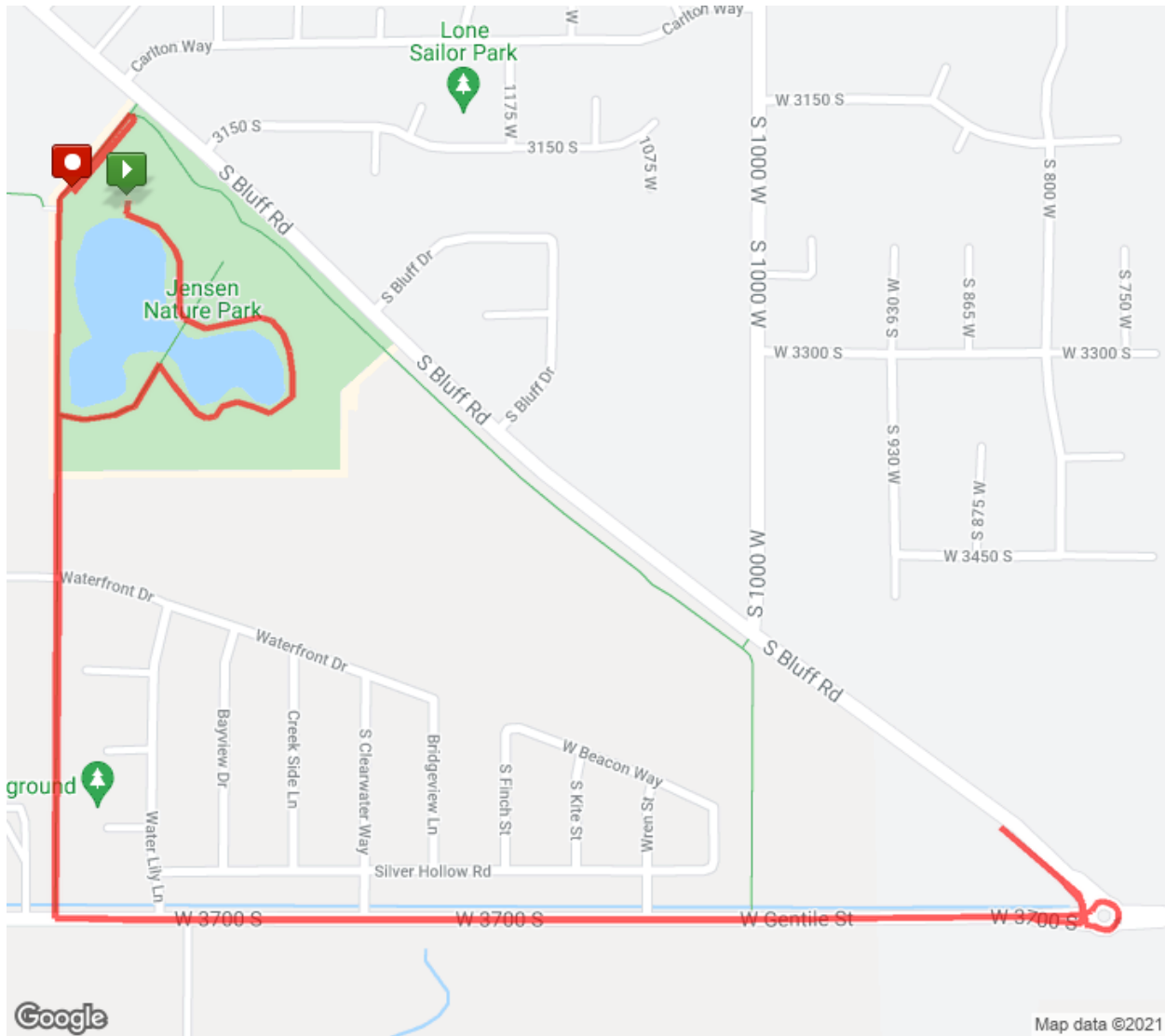
Brineman 5k Route

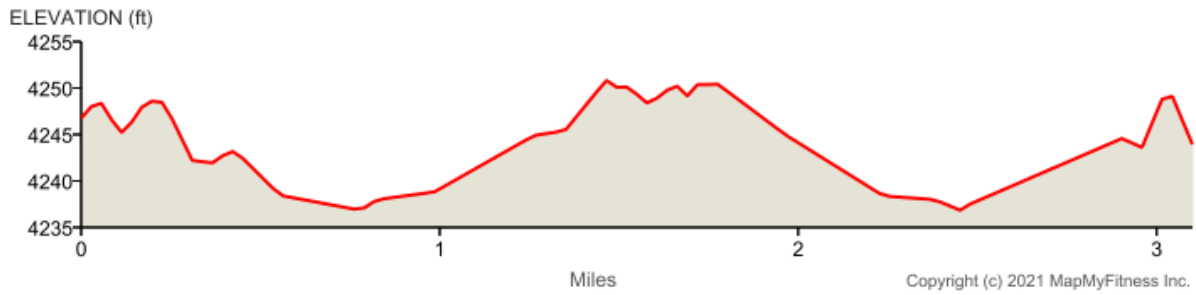
Distance: 3.10 mi

Elevation Gain: 22 ft

Elevation Max: 4,251 ft

Notes





0.00 mi Direct/offroad route segment

0.00 mi Direct/offroad route segment

0.00 mi Direct/offroad route segment

0.00 mi Direct/offroad route segment

0.00 mi Direct/offroad route segment

0.00 mi Direct/offroad route segment

0.00 mi Direct/offroad route segment

0.00 mi Direct/offroad route segment

0.00 mi Direct/offroad route segment

0.00 mi Direct/offroad route segment

0.00 mi Direct/offroad route segment

0.00 mi Direct/offroad route segment

0.00 mi Direct/offroad route segment

0.00 mi Direct/offroad route segment

0.00 mi Direct/offroad route segment

0.00 mi Direct/offroad route segment

0.00 mi Direct/offroad route segment

0.00 mi Direct/offroad route segment

0.00 mi Direct/offroad route segment

0.00 mi Direct/offroad route segment

0.00 mi Direct/offroad route segment

0.00 mi Direct/offroad route segment

0.00 mi	Direct/offroad route segment
0.00 mi	Direct/offroad route segment
0.00 mi	Head southwest
0.07 mi	Head west
0.09 mi	Turn left
0.21 mi	Head south toward W 3700 S/W Gentile St
0.44 mi	Turn left onto W 3700 S/W Gentile StDestination will be on the left
0.49 mi	Head east on W 3700 S/W Gentile St toward Water Lily LnDestination will be on the left
0.64 mi	Head east on W 3700 S/W Gentile St toward S Clearwater WayDestination will be on the left
1.15 mi	Direct/offroad route segment
1.15 mi	Direct/offroad route segment
1.15 mi	Direct/offroad route segment
1.15 mi	Direct/offroad route segment
1.15 mi	Direct/offroad route segment
1.15 mi	Head east on W 3700 S/W Gentile St
1.16 mi	At the traffic circle, take the 3rd exit and stay on W 3700 S/W Gentile St
1.93 mi	Turn rightDestination will be on the right
1.95 mi	Head north toward Waterfront Dr
2.39 mi	Head north
2.50 mi	Direct/offroad route segment
2.50 mi	Direct/offroad route segment
2.50 mi	Destination
