



Insulation Components, Inc.



# Product Catalog 2021

Mechanical Insulation Products



*Proudly Serving Our Industry for Over 18 Years!*

## ABOUT US

Insulation Components, Inc. manufactures and sells quality Plumbing, HVAC and Mechanical Insulation products. We are the exclusive provider of iShields™, Insulated iShields™, iNserts™, and iBlock™ pipe supports. We ship throughout the United States and Canada. Please contact us for your product needs.

## MISSION STATEMENT

To shine a positive light while serving people and our industry with excellence and growing profitably.

## VISION STATEMENT

To be a God honoring company in word and deed.

## CORE VALUES

*Value: Using our skills and experience to meet the needs of our customers.*

*Dependability: Being reliable and trustworthy in doing what we say we're going to do.*

*Adaptability: Displaying a positive attitude while living out our vision and serving others.*

*Commitment: Consistent dedication to the company, team and those we serve.*

## COMPANY HISTORY

Over 25 years ago our founder and current president started manufacturing and fabricating insulation components in his parent's garage. At the time he did so while operating a mechanical insulation contracting business with his ailing father, a local 75 Heat and Frost Asbestos worker. After seeing the need and demand to focus solely on the manufacturing and fabrication of components in 2002 Insulation Components, Inc. was established. Today, 18 years later, the company continues to expand.



## INSULATION COMPONENTS, INC.

- 4 high density insulation types with galvanized iShields™ to meet project requirements and specifications
- Calcium Silicate, Phenolic, Polyisocyanurate, and Cellular Glass
- Custom made options to accommodate various hanger spans, point loads and jacketing and gauge requirements.
- -300 F to +1200 F to cover low temperature refrigeration piping to high temperature steam piping



- 4 high density insulation types to meet project requirements and specifications
- Calcium Silicate, Phenolic, Polyisocyanurate, and Cellular Glass
- Custom made options to accommodate various hanger spans, point loads and jacketing requirements.
- -300 F to +1200 F to cover low temperature refrigeration piping to high temperature steam piping
- Available in custom lengths- 6" to 36"



- Low economical cost
- Each iShield™ individually marked with outside diameter
- Packaged in strong heavy gauge boxes or square buckets
- Each package clearly labeled with size, length, gauge & quantity
- Options of flared edges, alignment ribs, or plain straight iShields™
- Fast delivery on all orders



- Low economical cost
- Various sizes to accommodate insulation thickness
- Standard softwood, hardwood, or High Density Fiberglass
- Bundled inside of the box for ease of handling
- Each package clearly labeled with type, size and quantity
- Ship along with iShields™ for freight allowance



- Mechanical Insulation industry products
- Each product packaged and clearly labeled with description and quantity
- Superior customer service







- Available in Straight, Flared, Rib & Flare, Stainless
- *Flared Edge* - To prevent iShields™ from cutting into pipe insulation when applying. They also add to the structural strength.
- *Ribs* - To help secure the iShield™ in place over the hanger and to alleviate the iShields™ slipping out of place with pipe movement.
- Each iShield™ is marked with its outside diameter measurement. Use IC sizing charts to guarantee the proper size iShield™ is used.
- *Heavy Duty Packaging with labeling* - improved, stronger packaging with label providing detailed information on diameter, gauge, length and pieces per carton.



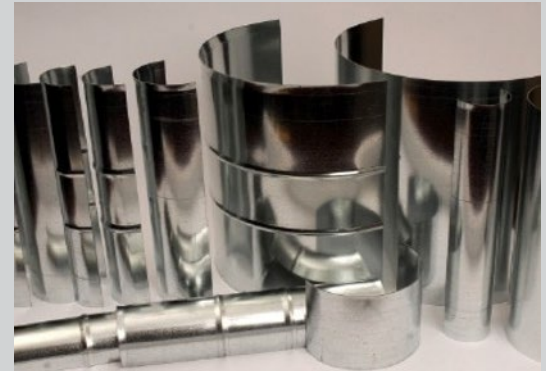
## OUR CAPABILITIES INCLUDE, BUT ARE NOT LIMITED TO THE FOLLOWING:

- *Various Lengths* - 4", 6", 8", 9", 12", 15", 18" & 24" Straight iShields only
- *iShield styles include* - 12" long w/ Rib & Flare, 12" long w/ Flare only, Straight iShield & 8" long w/ Ribs
- *8" long* - w/ Ribs & Flare
- *Different Degrees of iShields* - 180°, 200° & 220° iShields
- Stainless Steel iShields also available



# iShields™ Sizing Chart

ISHIELD O.D.	LENGTH	GAUGE	PCS/BOX	PCS/BUCKET
2.0	12"	22	100	150/BUCKET
2.5	12"	22	100	100/BUCKET
3.0	12"	22	50	100/BUCKET
3.5	12"	22	50	80/BUCKET
4.0	12"	22	30	60/BUCKET
4.5	12"	22	30	50/BUCKET
5.0	12"	22	30	50/BUCKET
5.5	12"	22	30	50/BUCKET
6.0	12"	20	30	40/BUCKET
6.5	12"	20 20	30	40/BUCKET
7.0	12"	20	30	30/BUCKET
7.5	12"	20	20	30/BUCKET
8.0	12"	20	20	30/BUCKET
8.5	12"	20	20	20/BOX
9.0	12"	20	20	20/BOX
9.5	12"	20	15	15/BOX
10.0	12"	20	15	15/BOX
10.5	12"	20	15	15/BOX
11.0	12"	20	15	15/BOX
11.5	12"	20	15	15/BOX
12.0	12"	20	15	15/BOX
12.5	12"	20	15	15/BOX
13.0	12"	20	15	15/BOX
13.5	12"	20	15	15/BOX
14.0	12"	20	10	10/BOX
14.5	12"	20	10	10/BOX
15.0	12"	18	10	10/BOX
15.5	12"	18	10	10/BOX
16.0	12"	18	10	10/BOX
17.0	12"	18	10	10/BOX
18.0	12"	18	10	10/BOX
19.0	12"	18	10	10/BOX
20.0	12"	18	10	10/BOX
21.0	12"	18	10	10/BOX



Each iShield Marked with  
O.D. Size  
Various Sizes & Styles

Packaged in Buckets or  
Boxes

**PLEASE NOTE: WE REQUEST THAT YOU  
ORDER FULL BOX QUANTITY ON STOCK  
ITEMS UP TO 12.5 O.D.**

**\*Please call for quote on any  
size not listed**

**PRODUCT FEATURES**

An INSULATION COMPONENTS iShield™ is a 180 degree piece of galvanized coated steel used to protect piping insulation from compressing at pipe hanger locations. The flared edges help the iShield™ from cutting into the pipe insulation which can damage the vapor barrier. The Ribs aid in the alignment of the iShield™. They ensure the iShield™ is placed directly below the hanger and help to alleviate the iShield™ slipping out of place with pipe movement. It is suggested that wood or fiberglass iBlocks™ be used along with iShields™ to guarantee the proper support.

*(See the IC Wood or Fiberglass iBlock Product Data Sheets )*

**FEATURES**

- **Flared Edge** - To prevent the iShield™ from cutting into pipe insulation when applying and to add structural strength.
- **Ribs** - To help secure the iShield™ in place over the hanger and to alleviate the iShield™ slipping out of place with pipe movement. They also add structural strength.
- **Each iShield™ is marked with its outside diameter measurement** – Use IC sizing charts to guarantee the proper size iShield™ is used.
- **Heavy Duty Packaging with Clear Labeling** - Improved stronger packaging with label providing detailed information on diameter, gauge, length, and pieces per carton.

**APPLICATIONS**

INSULATION COMPONENTS iShields™ are made for use on plumbing and HVAC mechanical piping systems with temperatures ranging from -120 to +500 degrees F. IC iShields™ are ideal for use on medium and low compressive strength pipe insulation. Also insulation that has a vapor barrier which is either field or factory applied. Such insulation includes but is not limited to: rubber, polyethylene, fiberglass, urethane, styrofoam and calcium silicate.

**NOTE:**

When applied with the correct wood or fiberglass iBlock™ (See the IC Wood or Fiberglass iBlock™ Product Data Sheets) IC iShields™ are made to withstand 5 PSI compressive strength on a minimum span of 10 linear feet.

**RECOMMENDED INSTALLATION INSTRUCTIONS**

Begin by lifting the appropriately sized IC iShield™ upward towards the insulated pipe to just outside the hanger location. Proceed by sliding the iShield™ underneath the hanger until the hanger is in the middle of the iShield™.

**ENGINEERING GUIDE SPECIFICATION**

Wherever pipe insulation passes through a hanger location, the IC GALVANIZED STEEL iSHIELD™ shall be installed. Also, each iSHIELD™ shall be marked by the O.D. of the pipe insulation.

Unless otherwise indicated, data shown are typical values obtained from representative production samples by the material manufacturer. This data may be used as a guide for design purposes but should not be construed as specifications. This information is furnished without warranty, expressed or implied, except that it is accurate to the best knowledge of Insulation Components, Inc. Insulation Components, Inc. assumes no legal responsibility for use or reliance upon this data. For information regarding specific application of this product please contact Insulation Components, Inc.



# DATA SHEET

## iShields™ with Flare

### PRODUCT FEATURES

An INSULATION COMPONENTS iSHIELD™ is a 180 degree rounded piece of galvanized coated steel used to protect piping insulation from compressing at pipe hanger locations. IC Pipe iShields™ come with flared edges machined into each part. The flared edges protect the iShields™ from cutting into the pipe insulation which can damage the vapor barrier. It is suggested that wood or fiberglass iBlocks™ be used along with the iShield™ to guarantee the proper support.

*(See the IC Wood or Fiberglass iBlock™ Product Data Sheets)*

### FEATURES

- Flared Edge to prevent iShields™ from cutting into pipe insulation when applying and to add structural strength.
- Each iShield™ is marked with its outside diameter measurement along with IC charts this guarantees the proper size iShield™ is used.
- Heavy Duty Packaging with clear labeling.
- Improved, stronger packaging with label providing detailed information on diameter, gauge, length, and pieces per carton.



### APPLICATIONS

INSULATION COMPONENTS iShields™ are made for use on plumbing and HVAC mechanical piping systems with temperatures ranging from -120 to +500 degrees F. IC iShields™ are ideal for use on medium and low compressive strength pipe insulation and insulation that has a vapor barrier which is either field or factory applied. Such insulation includes but is not limited to: rubber, polyethylene, fiberglass, urethane, styrofoam and calcium silicate.



### NOTE:

When applied with the correct wood or fiberglass iBlock™ (See the IC Wood or Fiberglass iBlock™ Product Data Sheets) IC iShields™ are made to withstand 5 PSI compressive strength on a minimum span of 10 linear feet.

### RECOMMENDED INSTALLATION INSTRUCTIONS

Begin by lifting the appropriately sized IC iShield™ upward towards the insulated pipe to just outside the hanger location. Proceed by sliding the iShield™ underneath the hanger until the hanger is in the middle of the iShield™.

### ENGINEERING GUIDE SPECIFICATION

Wherever pipe insulation passes through a hanger location, the IC GALVANIZED STEEL iSHIELD™ shall be installed. Also, each iSHIELD™ shall be marked by the O.D. of the pipe insulation.

Unless otherwise indicated, data shown are typical values obtained from representative production samples by the material manufacturer. This data may be used as a guide for design purposes but should not be construed as specifications. This information is furnished without warranty, expressed or implied, except that it is accurate to the best knowledge of Insulation Components, Inc. Insulation Components, Inc. assumes no legal responsibility for use or reliance upon this data. For information regarding specific application of this product please contact Insulation Components, Inc.



# Straight/No Flare iShields™

## PRODUCT FEATURES

An INSULATION COMPONENTS iShield™ is a 180 degree rounded piece of galvanized coated steel used to protect piping insulation from compressing at pipe hanger locations. It is suggested that wood or fiberglass iBlocks™ be used along with the iShield™ to guarantee the proper support.  
(See the IC Wood or Fiberglass iBlock™ Product Data Sheets)



## FEATURES

- An INSULATION COMPONENTS iShield™ is a 180 degree rounded piece of galvanized coated steel used to protect piping insulation from compressing at pipe hanger locations. It is suggested that wood or fiberglass iBlocks™ be used along with the iShield™ to guarantee the proper support.
- (See the IC Wood or Fiberglass iBlock™ Product Data Sheets)

## APPLICATIONS

INSULATION COMPONENTS iShields™ are made for use on plumbing and HVAC mechanical piping systems with temperatures ranging from -120 to +500 degrees F. IC iShields™ are ideal for use on medium and low compressive strength pipe insulation. Also, insulation that has a vapor barrier which is either field or factory applied. Such insulation includes but is not limited to: rubber, polyethylene, fiberglass, urethane, styrofoam and calcium silicate.



## NOTE:

When applied with the correct wood or fiberglass iBlock™ (See the IC Wood or Fiberglass iBlock™ Product Data Sheets) IC iShields™ are made to withstand 5 PSI compressive strength on a minimum span of 10 linear feet.

## RECOMMENDED INSTALLATION INSTRUCTIONS

Begin by lifting the appropriately sized IC iShield™ upward towards the insulated pipe to just outside the hanger location. Proceed by sliding the iShield™ underneath the hanger until the hanger is in the middle of the iShield™.

## ENGINEERING GUIDE SPECIFICATION

Wherever pipe insulation passes through a hanger location, the IC GALVANIZED STEEL iSHIELD™ shall be installed. Also, each iSHIELD™ shall be marked by the O.D. of the pipe insulation.

Unless otherwise indicated, data shown are typical values obtained from representative production samples by the material manufacturer. This data may be used as a guide for design purposes but should not be construed as specifications. This information is furnished without warranty, expressed or implied, except that it is accurate to the best knowledge of Insulation Components, Inc. Insulation Components, Inc. assumes no legal responsibility for use or reliance upon this data. For information regarding specific application of this product please contact Insulation Components, Inc.™™





# Stainless Steel iShields™

## PRODUCT FEATURES

An INSULATION COMPONENTS STAINLESS STEEL iShield™ is a 180 degree piece of 201-B Stainless Steel (304-2B available on request) used to protect piping insulation from compressing at pipe hanger locations. It is suggested that wood or fiberglass iBlocks™ be used along with iShields™ to guarantee the proper support.

*(See the IC Wood or Fiberglass iBlock™ Product Data Sheets)*

## FEATURES

- **201-B Mill Finish** - For superior rust proof protection (304-2B available upon request.)
- **Each iShield™ is marked with its outside diameter measurement** - along with IC sizing charts this guarantees the proper size iShield™ is used.
- **Individually Inspected** - For superior quality control
- **Heavy Duty Packaging with clear labeling** - Improved, stronger packaging with label providing detailed information on diameter, gauge, length, and pieces per carton.



## APPLICATIONS

INSULATION COMPONENTS iShields™ are made for use on plumbing and HVAC mechanical piping systems with temperatures ranging from -120 to +500 degrees F. IC iShields™ are ideal for use on medium and low compressive strength pipe insulation. Also, insulation that has a vapor barrier which is either field or factory applied. Such insulation includes but is not limited to: rubber, polyethylene, fiberglass, urethane, Styrofoam, and calcium silicate.



## NOTE:

When applied with the correct wood or fiberglass iBlock™ (See the IC Wood or Fiberglass iBlock™ Product Data Sheets) IC iShields™ are made to withstand 5 PSI compressive strength on a minimum span of 10 linear feet.

## RECOMMENDED INSTALLATION INSTRUCTIONS

Begin by lifting the appropriately sized IC iShield™ upward towards the insulated pipe to just outside the hanger location. Proceed by sliding the iShield™ underneath the hanger until the hanger is in the middle of the iShield™.

## ENGINEERING GUIDE SPECIFICATION

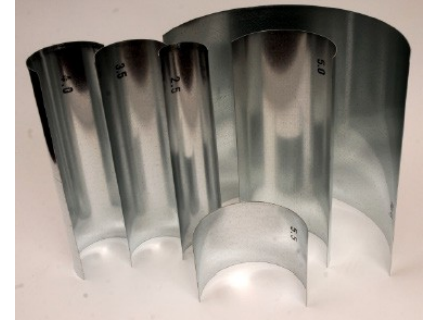
Wherever pipe insulation passes through a hanger location, the IC GALVANIZED STEEL iSHIELD™ shall be installed. Also, each iSHIELD™ shall be marked by the O.D. of the pipe insulation.

Unless otherwise indicated, data shown are typical values obtained from representative production samples by the material manufacturer. This data may be used as a guide for design purposes but should not be construed as specifications. This information is furnished without warranty, expressed or implied, except that it is accurate to the best knowledge of Insulation Components, Inc. Insulation Components, Inc. assumes no legal responsibility for use or reliance upon this data. For information regarding specific application of this product please contact Insulation Components, Inc.



### PRODUCT FEATURES

An INSULATION COMPONENTS MSS Series iShield™ is a 180 degree rounded piece of galvanized coated steel used to protect piping insulation from compressing at pipe hanger locations. These iShields™ resist crushing the insulation at the point of support when the insulation has more than 5% deformation at 30 psi. These specifically designed iShields™ are conformed with Federal Specification WW-H-171 (Type 41), Manufacturers Standardization Society ANSI/MSS-SP-58 (Type 40); install in accordance with ANSI/MSS-SP-69. It is suggested that wood or fiberglass iBlocks™ be used along with the iShield™ to guarantee the proper support.



### FEATURES

- Galvanized Finish for superior rust proof protection.
- 18-gauge through 12-gauge thickness to meet every ANSI/ MSS application.
- Each iShield™ is marked with its outside diameter measurement.
- IC sizing charts guarantee the proper size iShield™ is used.
- Individually Inspected for superior quality control.
- Heavy Duty Packaging with clear labeling.
- Improved, stronger packaging with label providing detailed information on diameter, gauge, length, and pieces per carton.



### APPLICATIONS

INSULATION COMPONENTS iShields™ are made for use on plumbing and HVAC mechanical piping systems with temperatures ranging from -120 to +500 degrees F. IC iShields™ are ideal for use on medium and low compressive strength pipe insulation and insulation that has a vapor barrier which is either field or factory applied. Such insulation includes but is not limited to: rubber, polyethylene, fiberglass, urethane, styrofoam and calcium silicate.

### NOTE:

When applied with the correct wood or fiberglass iBlock™ (See the IC Wood or Fiberglass iBlock™ Product Data Sheets) IC iShields™ are made to withstand 5 PSI compressive strength on a minimum span of 10 linear feet.

### RECOMMENDED INSTALLATION INSTRUCTIONS

Begin by lifting the appropriately sized IC iShield™ upward towards the insulated pipe to just outside the hanger location. Proceed by sliding the iShield™ underneath the hanger until the hanger is in the middle of the iShield™.

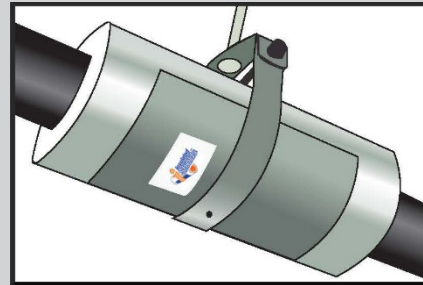
### ENGINEERING GUIDE SPECIFICATION

Wherever pipe insulation passes through a hanger location, the IC GALVANIZED STEEL iSHIELD™ shall be installed. Also, each iSHIELD™ shall be marked by the O.D. of the pipe insulation.

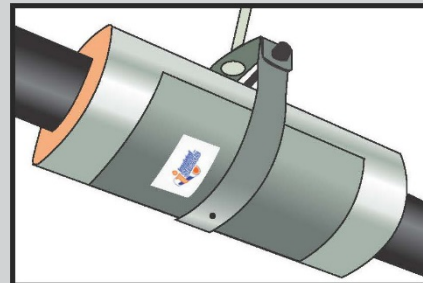
Unless otherwise indicated, data shown are typical values obtained from representative production samples by the material manufacturer. This data may be used as a guide for design purposes but should not be construed as specifications. This information is furnished without warranty, expressed or implied, except that it is accurate to the best knowledge of Insulation Components, Inc. Insulation Components, Inc. assumes no legal responsibility for use or reliance upon this data. For information regarding specific application of this product please contact Insulation Components, Inc.

## ALL INSULATION COMPONENTS INSULATED ISHIELDS™

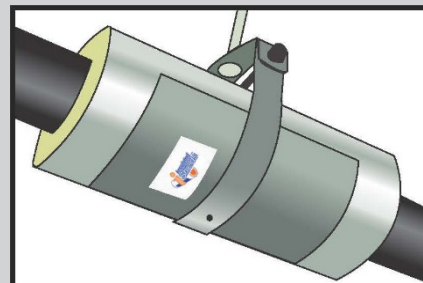
- Designed and made to provide superior support over a multitude of hanger types and pipe requirements.
- Each IC Insulated iShield™ is designed to meet a specific service temperature range and pipe support.
- Insulated iShields™ are designed with a vapor barrier to serve their specific application. Additional vapor barrier options are available where required or requested.
- All Insulated iShields™ are available with 180° or 360° galvanized iShields.
- Data sheets are available upon request.



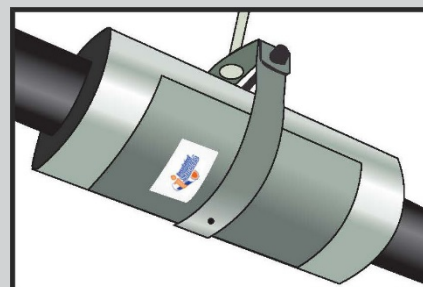
Calcium Silicate Insulated iShields™



Phenolic Insulated iShields™



Polyiso Insulated iShields™



Cellular Glass Insulated iShields™

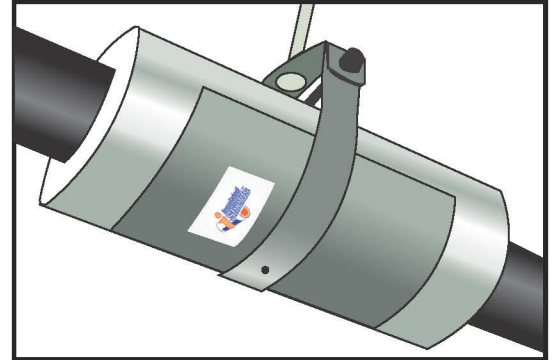


# DATA SHEET

## Calcium Silicate Insulated iShields™

### Product Description

Insulation Components Inc. Calcium Silicate Insulated iShields™ prevent pipe insulation crushing and maintain insulation integrity at pipe hanger locations. They are used on mid temperature plumbing and HVAC piping operating between 0°F and 1200°F. They are commonly installed on lines such as: domestic hot water, chilled water, heating hot water, and steam. They provide a full 360 degrees of high density ASTM C533 Type 1 Calcium Silicate Insulation wrapped with ASJ (All Service Jacketing). The insulation and ASJ on each CalSil Insulated iShield™ extends a minimum of 1" on each end beyond the attached galvanized steel shield. This provides a vapor-tight joint with the matching, adjoining insulation and jacketing. They are suitable for use in all types of pipe hangers and are available with 180° or 360° iShields™. When installed in accordance with ANSI/MSS-SP-69 all Insulated iShields™ comply with Federal Specification WW-H-171 (Type 41) Manufacturers Standardization Society ANSI/MSS-SP-58 (Type 40).



### Installation

Installation shall occur in collaboration with the pipe hanger assembly, thus ensuring proper pipe elevation. For use on all hot and cold insulated pipe systems with operating temperatures from 0°F to 1200°F

### Product Detail

Physical Properties of Insulation		Specification Compliance
Max Service Temperature°	1200°	ASTM C447
Thermal Conductivity - K-Factor, Btu*in/hr*ft+ °F	.39 @ 100° F mean .68 @ 700° F mean	ASTM C335
Compressive Strength (*PSI)	>100-220 psi @ 5% strain (1558 kPa)	ASTM C 165
Flexural Strength	>80 psi (551 kPa)	ASTM C203
Linear Shrinkage	<1.0% after 24 hr. soaking heat@ 1200°F (650°C)	ASTM C356
Abrasion Resistance	Weight Loss by Tumbling<10% after 10 minutes	ASTM C421
Flame Spread/Smoke Developed	0/0	ASTM E-84
Vapor Retarder Film Thickness Average	.010	ASTM D-374
Perm Rating	.02	ASTM E-96

Nominal Pipe Size	Compressive Strength	Insulation Length	iShield Length	iShield Gauge
1/2" - 2-1/2"	*13 PCF	6"	4"	**20/22 Ga.
3" - 6"	*13PCF	6"	4"	**16/18/20 Ga.
8" - 10"	*13PCF	9"	6"	**14/16/18 Ga.

\*For corresponding PSI reference chart above.

\*\*Multiple gauges listed reflect various insulation thicknesses

Unless otherwise indicated, data shown are typical values obtained from representative production samples by the material manufacturer. This data may be used as a guide for design purposes but should not be construed as specifications. This information is furnished without warranty, expressed or implied, except that it is accurate to the best knowledge of Insulation Components, Inc. Insulation Components, Inc. assumes no legal responsibility for use or reliance upon this data. For information regarding specific application of this product please contact Insulation Components, Inc.



**Insulation Components, Inc.**  
 13301 Chippewa Blvd, Mishawaka, IN 46545  
 574.258.1885 Fax: 866.565.0359

[www.insulationcomponents.com](http://www.insulationcomponents.com)  
[orders@insulationcomponents.com](mailto:orders@insulationcomponents.com)  
 IS-00020-A-EN © 2020. All rights reserved. Please recycle. Printed in U.S.A.

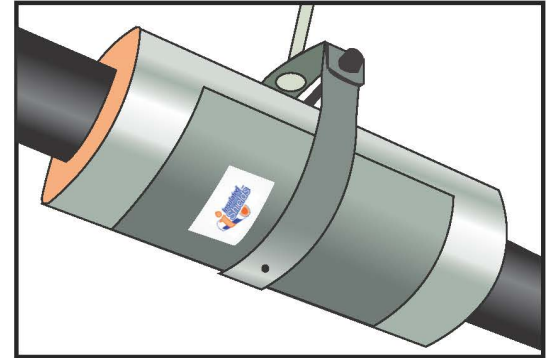




# Phenolic Insulated iShields™

## Product Features

Insulation Components Inc. Phenolic Insulated iShields™ prevent pipe insulation crushing and maintain insulation integrity at pipe hanger locations. They are used on low and mid temperature plumbing and HVAC piping operating between -290°F and 250°F. They are commonly installed on lines such as: domestic hot and cold water, chilled water, heating hot water, condenser water and low pressure steam. They provide a full 360° of high density ASTM C1126 Type III phenolic insulation with the higher density PCF/PSI located at the lower 180° point load area on 3" pipe and above. The insulation and ASJ (all service jacketing) on each Phenolic Insulated iShield™ extends a minimum of 1" on each end beyond the galvanized steel shield. This provides a vapor-tight joint with the matching, adjoining insulation and jacketing. They are suitable for use in all types of pipe hangers and are available with 180° and 360° iShields™. When installed in accordance with ANSI/MSS-SP-69 all Insulated iShields™ comply with Federal Specification WW-H-171 (Type 41) Manufacturers Standardization Society ANSI/MSS-SP-58 (Type 40).



## Installation

Installation shall occur in collaboration with the pipe hanger assembly, thus ensuring proper pipe elevation. For use on all hot and cold insulated pipe systems with operating temperatures from -290°F to 250°F

## Product Detail

Physical Properties		Specification Compliance
Vapor Retarder Film Thickness Average	.010 (Perm Rating .02)	ASTM D-374/ASTM E-96
Thermal Conductivity	.22 Avg. Btu•in/hr•ft <sup>2</sup> •°F (W/m•°C)	BS4370/ASTM C518
Service Temperature °F	-290 to +250	
Water Absorption by volume	0.25%	ASTM D-209
Demensional Stability	0.3%	ASTM 2026
Closed Cell Content, %, min	95	ASTM D-2856
Flame Spread/Smoke Developed	25/50	ASTM E-84
Perpendicular to Rise (*PSI) Parallel to Rise (*PSI)	2.5 PCF=25 3PCF=35 3.75PCF=40 5PCF=58 7.5PCF=110 2.5 PCF=30 3PCF=35 3.75PCF=58 5PCF=94 7.5PCF=196	ASTM- 1621

Nominal Pipe Size	Compressive Strength	Insulation Length	iShield Length	iShield Gauge
1/2" - 2-1/2"	2.5-3.75 PCF	6"	4"	**20/22 Ga.
3" - 6"	2.5-*5 PCF	6"	4"	**16/18/20 Ga.
8" - 10"	2.5-*7.5 PCF	9"	6"	**16/18/20 Ga.

\*Note: Higher PCF on 3" and above represents lower 180 degrees at point load . For corresponding PSI reference chart above. \*\*Multiple gauges listed reflect various insulation thicknesses

Unless otherwise indicated, data shown are typical values obtained from representative production samples by the material manufacturer. This data may be used as a guide for design purposes but should not be construed as specifications. This information is furnished without warranty, expressed or implied, except that it is accurate to the best knowledge of Insulation Components, Inc. Insulation Components, Inc. assumes no legal responsibility for use or reliance upon this data. For information regarding specific application of this product please contact Insulation Components, Inc.

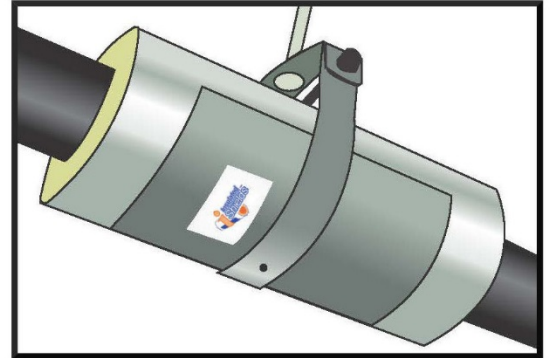




# Polyiso Insulated iShields™

## Product Features

Insulation Components Inc. Polyisocyanurate Insulated iShields™ prevent pipe insulation crushing and maintain insulation integrity at pipe hanger locations. They are used on low and mid temperature plumbing and HVAC piping operating between -297°F and 300°F and are commonly installed on lines such as: domestic hot and cold water, chilled water, heating hot water, condenser water, and low pressure steam. They provide a full 360 degrees of high density insulation and ASJ (All Service Jacketing) vapor barrier. The insulation and jacketing on the Polyiso Insulated iShields™ extends beyond the galvanized steel shield for a vapor-tight joint with the matching, adjoining insulation and jacketing. They are suitable for use in all types of pipe hangers and are available with 180° or 360° iShields™. All Insulated iShields comply with Federal Specification WW-H-171 (Type 41). Manufacturers Standardization Society ANSI/MSS-SP-58 (Type 40) when installed in accordance with ANSI/MSS-SP-69.



## Installation

Installation shall occur in collaboration with the pipe hanger assembly, thus ensuring proper pipe elevation. For use on all hot and cold insulated pipe systems with operating temperatures from -297° F to 300°F.

## Product Detail

Physical Properties		Specification Compliance
Vapor Retarder Film Thickness Average	.010 (Perm Rating .01)	
K-Factor, Btu*in/hr*ft <sup>2</sup> °F Aged 180 days @ 75°F	.19	ASTM C-518
Service Temperature °F	-297 to +300	
Water Absorption, 24-hr immersion % by volume	<0.7	ASTM C-272
Water Vapor Permeability (perm-inch)	2.9	ASTM E-96
Closed Cell Content, %, min	95	ASTM D-2856
Surface Burning Characteristics Flame Spread/Smoke Developed (FS/SD)	25/450	ASTM E-84
Perpendicular to Rise (*PSI) Parallel to Rise PSI (*PSI)	4 PCF=62 5 PCF=70 4 PCF=100 5 PCF=90	ASTM D-624 ASTM E-96

Nominal Pipe Size	Compressive Strength	Insulation Length	iShield Length	iShield Gauge
1/2" - 6"	*4-5 PCF	6"	4"	**20/22 Ga
8"- 10"	*4-5 PCF	9"	6"	**16/18/20 Ga
	*For corresponding PSI reference chart above.			**Multiple gauges listed reflect various insulation thicknesses

Unless otherwise indicated, data shown are typical values obtained from representative production samples by the material manufacturer. This data may be used as a guide for design purposes but should not be construed as specifications. This information is furnished without warranty, expressed or implied, except that it is accurate to the best knowledge of Insulation Components, Inc. Insulation Components, Inc. assumes no legal responsibility for use or reliance upon this data. For information regarding specific application of this product please contact Insulation Components, Inc.



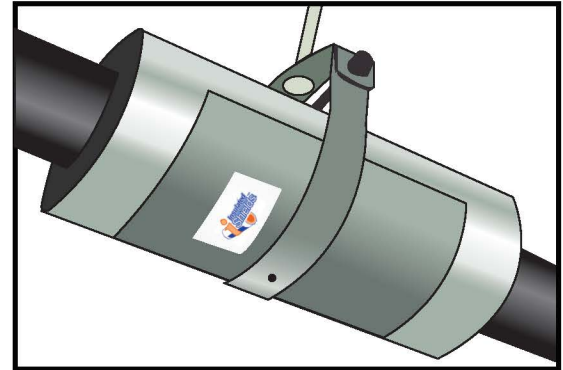




# Cellular Glass Insulated iShields™

## Product Features

Insulation Components Inc. Cellular Glass Insulated iShields™ prevent pipe insulation crushing and maintain insulation integrity at pipe hanger locations. They are used on low and mid temperature plumbing and HVAC piping operating between -450°F and 900°F and are commonly installed on lines such as: domestic hot and cold water, chilled water, heating hot water, condenser water, and low pressure steam. They provide a full 360 degrees of high density insulation and ASJ (All Service Jacketing) vapor barrier. The insulation and jacketing on the Cellular Glass Insulated iShields™ extends beyond the galvanized steel shield for a vapor-tight joint with the matching, adjoining insulation and jacketing. They are suitable for use in all types of pipe hangers and are available with 180° and 360° iShields™. When installed in accordance with ANSI/MSS-SP-69 all Insulated iShields™ comply with Federal Specification WW-H-171 (Type 41) Manufacturers Standardization Society ANSI/MSS-SP-58 (Type 40).



## Installation

Installation shall occur in collaboration with the pipe hanger assembly, thus ensuring proper pipe elevation. For use on all hot and cold insulated pipe systems with operating temperatures from -450° F to 900°F.

## Product Detail

Physical Properties	PSI 60/90	Specification Compliance
Thermal Conductivity	Btu-in hr <sup>2</sup> ft <sup>2</sup> °F .28 @ 50°F .29 @ 75°F	ASTM C-177 ASTM C-518
Specific Heat	0.18 BTU/lb °F @ 77°F	ASTM E-146
Service Temperature °F	-450°F to +900°F	
Water Absorption, 24 hr immersion % by volume	0.2%	ASTM C-240
Water Vapor Permeability (perm-inch)	0.00	ASTM E-96
Combustibility & Reaction to Fire	Noncombustible - will not burn Flame Spread 0 Smoke Development 0	ASTM E-84
Vapor Retarder Film Thickness Average Perm Rating	.01 .02	ASTM E-96
Compressive Strength (*PSI)	AVG = 90 LB / in <sup>2</sup> LSL = 60 LB / in <sup>2</sup>	ASTM C-165 / C-240

Nominal Pipe Size	Compressive Strength	Insulation Length	iShield Length	iShield Gauge
1/2" - 6"	*7 PCF	6"	4"	**20/22 Ga.
8" - 10"	*7 PCF	9"	6"	**16/18/20 Ga.
	*For corresponding PSI reference chart above.			**Multiple gauges listed reflect various insulation thicknesses

Unless otherwise indicated, data shown are typical values obtained from representative production samples by the material manufacturer. This data may be used as a guide for design purposes but should not be construed as specifications. This information is furnished without warranty, expressed or implied, except that it is accurate to the best knowledge of Insulation Components, Inc. Insulation Components, Inc. assumes no legal responsibility for use or reliance upon this data. For information regarding specific application of this product please contact Insulation Components, Inc.

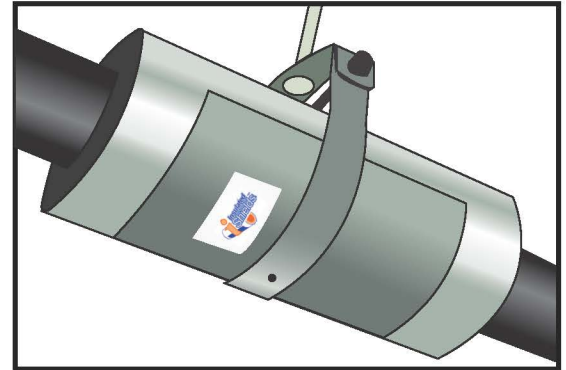




# Cellular Glass Insulated iShields E™

## Product Features

Insulation Components Inc. Cellular Glass Insulated iShields™ prevent pipe insulation crushing and maintain insulation integrity at pipe hanger locations. They are used on low and mid temperature plumbing and HVAC piping operating between -450°F and 900°F and are commonly installed on lines such as: domestic hot and cold water, chilled water, heating hot water, condenser water, and low pressure steam. They provide a full 360 degrees of high density insulation and ASJ (All Service Jacketing) vapor barrier. The insulation and jacketing on the Cellular Glass Insulated iShields™ extends beyond the galvanized steel shield for a vapor-tight joint with the matching, adjoining insulation and jacketing. They are suitable for use in all types of pipe hangers and are available with 180° and 360° iShields™. When installed in accordance with ANSI/MSS-SP-69 all Insulated iShields™ comply with Federal Specification WW-H-171 (Type 41) Manufacturers Standardization Society ANSI/MSS-SP-58 (Type 40).



## Installation

Installation shall occur in collaboration with the pipe hanger assembly, thus ensuring proper pipe elevation. For use on all hot and cold insulated pipe systems with operating temperatures from -450° F to 900°F.

## Product Detail

Physical Properties	PSI 60/90	Specification Compliance
Thermal Conductivity	Btu-in hr <sup>2</sup> ft <sup>2</sup> °F .28 @ 50°F .29 @ 75°F	ASTM C-177 ASTM C-518
Specific Heat	0.18 BTU/lb °F @ 77°F	ASTM E-146
Service Temperature °F	-450°F to +900°F	
Water Absorption, 24 hr immersion % by volume	0.2%	ASTM C-240
Water Vapor Permeability (perm-inch)	0.00	ASTM E-96
Combustibility & Reaction to Fire	Noncombustible - will not burn Flame Spread 0 Smoke Development 0	ASTM E-84
Vapor Retarder Film Thickness Average Perm Rating	.01 .02	ASTM E-96
Compressive Strength (*PSI)	AVG = 90 LB / in <sup>2</sup> LSL = 60 LB / in <sup>2</sup>	ASTM C-165 / C-240

Nominal Pipe Size	Compressive Strength	Insulation Length	iShield Length	iShield Gauge
1/2" - 1 1/2"	*7 PCF	12"	9"	**22 Ga
2" - 10"	*7 PCF	24"	18"	**16/18/20 Ga
	*For corresponding PSI reference chart above.			**Multiple gauges listed reflect various insulation thicknesses

Unless otherwise indicated, data shown are typical values obtained from representative production samples by the material manufacturer. This data may be used as a guide for design purposes but should not be construed as specifications. This information is furnished without warranty, expressed or implied, except that it is accurate to the best knowledge of Insulation Components, Inc. Insulation Components, Inc. assumes no legal responsibility for use or reliance upon this data. For information regarding specific application of this product please contact Insulation Components, Inc.



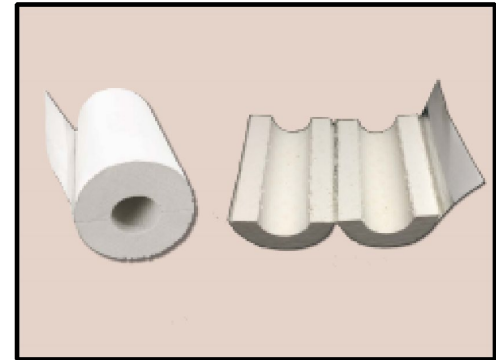




# Calcium Silicate iNserts™

## Product Description

Insulation Components Inc. Calcium Silicate Insulated iNserts™ prevent pipe insulation crushing and maintain insulation integrity at pipe hanger locations. They are used on mid temperature plumbing and HVAC piping operating between 0°F and 1200°F. They are commonly installed on lines such as: domestic hot water, chilled water, heating hot water, and steam. They provide a full 360 degrees of high density ASTM C533 Type 1 Calcium Silicate Insulation wrapped with ASJ (All Service Jacketing). They can also be applied on piping between hangers. Available in standard lengths from 6" to 36" long to meet MSS SP-58 point load requirements for a wide range of hanger types and spans.



## Installation

Installation shall occur in collaboration with the pipe hanger assembly, thus ensuring proper pipe elevation. For use on all hot insulated pipe systems with operating temperatures from 40°F to 1200°F

## Product Detail

Physical Properties		Specification Compliance
Max Service Temperature°	1200°	ASTM C447
Thermal Conductivity - K-Factor, Btu*in/hr*ft† °F	.39 @ 100° F mean .68 @ 700° F mean	ASTM C335
Compressive Strength (*PSI)	>100-220 psi @ 5% strain (1558 kPa)	ASTM C165
Flexural Strength	>80 psi (551 kPa)	ASTM C203
Linear Shrinkage	<1.0% after 24 hr. soaking heat@ 1200°F (650°C)	ASTM C356
Abrasion Resistance	Weight Loss by Tumbling<10% after 10 minutes	ASTM C421
Flame Spread/Smoke Developed	0/0	ASTM E-84
Vapor Retarder Film Thickness Average	.010	ASTM D-374
Perm Rating	.02	ASTME E-96

Unless otherwise indicated, data shown are typical values obtained from representative production samples by the material manufacturer. This data may be used as a guide for design purposes but should not be construed as specifications. This information is furnished without warranty, expressed or implied, except that it is accurate to the best knowledge of Insulation Components, Inc. Insulation Components, Inc. assumes no legal responsibility for use or reliance upon this data. For information regarding specific application of this product please contact Insulation Components, Inc.

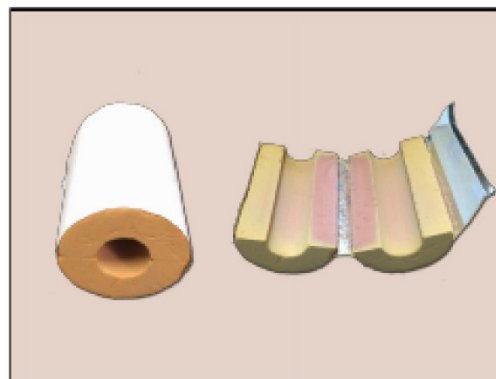




# Phenolic iNserts™

## Product Description

Insulation Components Inc. Phenolic iNserts™ prevent pipe insulation crushing and maintain insulation integrity at pipe hanger locations. They are used on low and mid temperature plumbing and HVAC piping operating between -290°F and 250°F. They are commonly installed on lines such as: domestic hot and cold water, chilled water, heating hot water, condenser water and low pressure steam. They provide a full 360 degrees of high density insulation and ASJ (All Service Jacketing) vapor barrier. They can also be applied on piping between hangers. Available in standard lengths from 6" to 36" long to meet MSS SP-58 point load requirements for a wide range of hanger types and spans.



## Installation

Installation shall occur in collaboration with the pipe hanger assembly, thus ensuring proper pipe elevation. For use on all hot and cold insulated pipe systems with operating temperatures from -290°F to 250°F

## Product Detail

Physical Properties		Specification Compliance
Recommended Pipe Size	1/2" to 30"	
Thermal Conductivity	.02W/m.K Avg .	BS4370/ASTM C518
Service Temperature °F	-290 to +250	
Water Absorption by Volume	0.25%	ASTM D-209
Dimensional Stability	0.3%	ASTM 2026
Closed Cell Content, %, min	95	ASTM D-2856
Flame Spread/Smoke Developed	25/50	ASTM E-84
Vapor Retarder Film Thickness Average	.010	ASTM D-374
Perm Rating	.02	ASTM E-96

Unless otherwise indicated, data shown are typical values obtained from representative production samples by the material manufacturer. This data may be used as a guide for design purposes but should not be construed as specifications. This information is furnished without warranty, expressed or implied, except that it is accurate to the best knowledge of Insulation Components, Inc. Insulation Components, Inc. assumes no legal responsibility for use or reliance upon this data. For information regarding specific application of this product please contact Insulation Components, Inc.

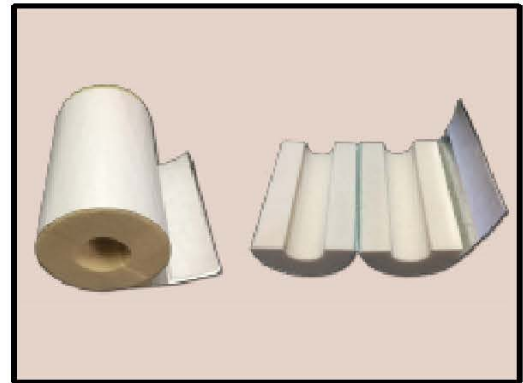




# Polyiso iNserts™

## Product Description

Insulation Components Inc. Polyisocyanurate iNserts™ prevent pipe insulation crushing and maintain insulation integrity at pipe hanger locations. They are used on low and mid temperature plumbing and HVAC piping operating between -297° F and 300°F and are commonly installed on lines such as: domestic hot and cold water, chilled water, heating hot water, condenser water, and low pressure steam. They provide a full 360 degrees of high density (HD) insulation and ASJ plus (All Service Jacketing) vapor barrier. They can also be applied on piping between hangers. Available in standard lengths from 6" to 36" long to meet MSS SP-58 point load requirements for a wide range of hanger types and spans.



## Installation

Installation shall occur in collaboration with the pipe hanger assembly, thus ensuring proper pipe elevation. For use on all hot and cold insulated pipe systems with operating temperatures from -297° F to 300°F.

## Product Detail

Physical Properties		Specification Compliance
Vapor Retarder Film Thickness Average	0.10 (Perm Rating .01)	
K-Factor, Btu*in/hr*ft <sup>2</sup> °F Aged 180 days @ 75°F	.19	ASTM C-518
Service Temperature °F	-297 to +300	
Water Absorption, 24-hr immersion % by volume	<0.7	ASTM C-272
Water Vapor Permeability (perm-inch)	2.9	ASTM E-96
Closed Cell Content, %, min	95	ASTM D-2856
Surface Burning Characteristics Flame Spread/Smoke Developed (FS/SD)	25/450	ASTM E-84
Perpendicular to Rise (*PSI)	4 PCF=62 5 PCF=70	ASTM D-624
Parallel to Rise (*PSI)	4 PCF=100 5 PCF=90	ASTM E-96

Unless otherwise indicated, data shown are typical values obtained from representative production samples by the material manufacturer. This data may be used as a guide for design purposes but should not be construed as specifications. This information is furnished without warranty, expressed or implied, except that it is accurate to the best knowledge of Insulation Components, Inc. Insulation Components, Inc. assumes no legal responsibility for use or reliance upon this data. For information regarding specific application of this product please contact Insulation Components, Inc.

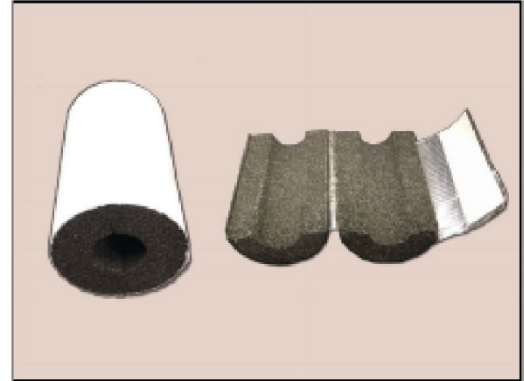




# Cellular Glass iNserts™

## Product Description

Insulation Components Inc. Cellular Glass Insulated iNserts™ prevent pipe insulation crushing and maintain insulation integrity at pipe hanger locations. They are used on low and mid temperature plumbing and HVAC piping operating between -450°F and 900°F and are commonly installed on lines such as: domestic hot and cold water, chilled water, heating hot water, condenser water, and low pressure steam. They provide a full 360 degrees of high density insulation and ASJ (All Service Jacketing) vapor barrier. They can also be applied on piping between hangers. Available in standard lengths from 6" to 36" long to meet MSS SP-58 point load requirements for a wide range of hanger types and spans.



## Installation

Installation shall occur in collaboration with the pipe hanger assembly, thus ensuring proper pipe elevation. For use on all hot and cold insulated pipe systems with operating temperatures from -450° F to 900°F.

## Product Detail

Physical Properties		Specification Compliance
Recommended Pipe Size	1/2" IPS to 10" IPS	
Thermal Conductivity	Btu-in hr <sup>2</sup> ft <sup>2</sup> °F .28 @ 50°F .29 @ 75°F	ASTM C-177 ASTM C-518
Specific Heat	0.18 BTU/lb °F @ 77°F	ASTM E-146
Service Temperature °F	-450°F to +900°F	
Water Absorption, 24 hr immersion % by volume	0.2%	ASTM C-240
Water Vapor Permeability (perm-inch)	0.00	ASTM E-96
Combustibility & Reaction to Fire	Noncombustible - will not burn Flame Spread 0 Smoke Development 0	ASTM E-84
Vapor Retarder Film Thickness Average	.010	ASTM D-374
Perm Rating	.02	ASTME E-96
Compressive Strength	AVG = 90 LB / in <sup>2</sup> LSL = 60 LB / in <sup>2</sup>	ASTM C-165 / C-240

Unless otherwise indicated, data shown are typical values obtained from representative production samples by the material manufacturer. This data may be used as a guide for design purposes but should not be construed as specifications. This information is furnished without warranty, expressed or implied, except that it is accurate to the best knowledge of Insulation Components, Inc. Insulation Components, Inc. assumes no legal responsibility for use or reliance upon this data. For information regarding specific application of this product please contact Insulation Components, Inc.







### PINEWOOD IBLOCKS

- Pine wood iBlocks™ - For use of best insulation support
- Each IC iBlock™ Bundled - to make for fast and easy handling
- Shipped along with IC iShields™ - ships with iShields™ for freight allowance
- Heavy Duty Packaging with clear labeling - Improved, stronger packaging with label providing detailed information on size, style, pieces/bundle, and pieces per carton.



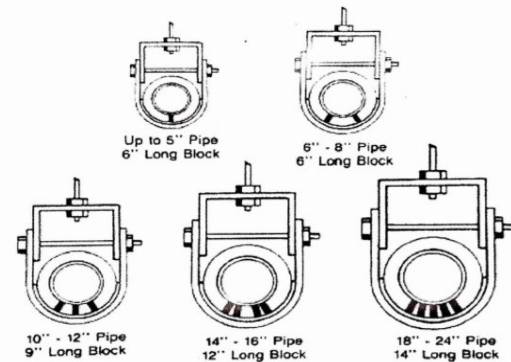
### HARDWOOD IBLOCKS

- Hardwood iBlocks™ - For use of best insulation support
- Each IC iBlock™ Bundled - to make for fast and easy handling
- Shipped along with IC iShields™ - ships with iShields™ for freight allowance
- Heavy Duty Packaging with clear labeling - Improved, stronger packaging with label providing detailed information on size, style, pieces/bundle, and pieces per carton.

### HIGH DENSITY FIBERGLASS IBLOCKS™

Materials/Construction:

- 20 Lb. Cu ./ft. Density
- Service temperature of -150° F. to +650° F.
- 0.2% by volume, 96 hrs. at 120° f. 96% RH Moisture Absorption
- Does not cause or accelerate corrosion
- Non-combustible product
- Non-Shrinkage material. Dimensionally stable.
- PH9 Alkalinity
- K = .30 (stable, non-deteriorating)
- Compressive strength of nominal 5% deflection @ 30PSI
- 10% deflection @ 80PSI
- 10- Flame spread index and -10- smoke development meeting ASTM E-84 24/50.
- All units are 100% Made and Manufactured in the USA



### PINEWOOD IBLOCKS™

SIZE	PCS/BOX	PCS/BUNDLE
1/2" X 1/2" X 5"	300	25
1/2" X 3/4" X 5"	200	20
1" X 1" X 6"	300	12
1 1/2" X 1" X 6"	200	9
1 1/2" X 1 1/2" X 6"	150	6
2" X 1 1/2" X 6"	120	4
2" X 2" X 6"	75	4

### HARDWOOD & FIBERGLASS IBLOCKS™

SIZE	PCS/BOX	PCS/BUNDLE
1" X 1" X 6"	300	12
1 1/2" X 1" X 6"	200	9
1 1/2" X 1 1/2" X 6"	150	6
2" X 1 1/2" X 6"	120	4
2" X 2" X 6"	75	4

Unless otherwise indicated, data shown are typical values obtained from representative production samples by the material manufacturer. This data may be used as a guide for design purposes but should not be construed as specifications. This information is furnished without warranty, expressed or implied, except that it is accurate to the best knowledge of Insulation Components, Inc. Insulation Components, Inc. assumes no legal responsibility for use or reliance upon this data. For information regarding specific application of this product please contact Insulation Components, Inc.

# Pine Wood iBlocks™

## Product Description

INSULATION COMPONENTS PINE WOOD iBLOCKS™ are used along with IC iShields to ensure that the pipe insulation does not compress at each hanger location. Pine Wood iBlocks™ are made to support pipe sizes ranging from 1/2" to 30" outside diameter. They are for use on plumbing and HVAC mechanical piping systems with temperatures ranging from -120 to +350 °F. Wherever pipe insulation passes through a hanger location, the Insulation Components Pine Wood iBlock™ support shall be installed. Each iBlock™ shall be equal to the pipe insulation thickness.



\*Fire Safety of Wood Products- USDA, Forest Service  
[www.terramai.com/userfiles/technical/USDA Flame Spread Index For Wood.pdf](http://www.terramai.com/userfiles/technical/USDA_Flame_Spread_Index_For_Wood.pdf)

\*American Wood Council Design for Code Acceptance  
[www.awc.org/publication/dcal/DCA.pdf](http://www.awc.org/publication/dcal/DCA.pdf)

## Installation

Pine Wood iBlocks™ are placed inside the pipe insulation at the hanger location. Before applying the pipe insulation, simply notch out the insulation with an insulation knife and replace insulation piece with the appropriately sized iBlock™.

## Product Detail

Physical Properties	Specification Compliance
Pipe Size	½" to 30"
Service Temperature °F	-120 to +350 °F

SIZE	PCS/BOX	PCS/BUNDLE
½" X ½" X 5"	300	25
½" X ¾" X 5"	200	20
1" X 1" X 6"	300	12
1½" X 1" X 6"	200	9
1½" X 1½" X 6"	150	6
2" X 1½" X 6"	120	4
2" X 2" X 6"	75	4

Unless otherwise indicated, data shown are typical values obtained from representative production samples by the material manufacturer. This data may be used as a guide for design purposes but should not be construed as specifications. This information is furnished without warranty, expressed or implied, except that it is accurate to the best knowledge of Insulation Components, Inc. Insulation Components, Inc. assumes no legal responsibility for use or reliance upon this data. For information regarding specific application of this product please contact Insulation Components, Inc.



# Hardwood iBlocks™

## Product Description

INSULATION COMPONENTS HARDWOOD iBLOCKS™ are used along with IC iShields to ensure that the pipe insulation does not compress at each hanger location. Hardwood iBlocks™ are made to support pipe sizes ranging from 1/2" to 30" outside diameter. They are for use on plumbing and HVAC mechanical piping systems with temperatures ranging from -120 to +350 °F. Wherever pipe insulation passes through a hanger location, the Insulation Components Hardwood iBlock™ support shall be installed. Each iBlock™ shall be equal to the pipe insulation thickness.



\*Fire Safety of Wood Products- USDA, Forest Service  
[www.terramai.com/userfiles/technical/USDA Flame Spread Index For Wood.pdf](http://www.terramai.com/userfiles/technical/USDA_Flame_Spread_Index_For_Wood.pdf)

\*American Wood Council Design for Code Acceptance  
[www.awc.org/publication/dcal/DCA.pdf](http://www.awc.org/publication/dcal/DCA.pdf)

## Installation

Hardwood iBlocks™ are placed inside the pipe insulation at the hanger location. Before applying the pipe insulation, simply notch out the insulation with an insulation knife and replace insulation piece with the appropriately sized iBlock™.

## Product Detail

Physical Properties	Specification Compliance	
Pipe Size	½" to 30"	
Service Temperature °F	-120 to +350 °F	

SIZE	PCS/BOX	PCS/BUNDLE
1" X 1" X 6"	300	12
1½" X 1" X 6"	200	9
1½" X 1½" X 6"	150	6
2" X 1½" X 6"	120	4
2" X 2" X 6"	75	4

Unless otherwise indicated, data shown are typical values obtained from representative production samples by the material manufacturer. This data may be used as a guide for design purposes but should not be construed as specifications. This information is furnished without warranty, expressed or implied, except that it is accurate to the best knowledge of Insulation Components, Inc. Insulation Components, Inc. assumes no legal responsibility for use or reliance upon this data. For information regarding specific application of this product please contact Insulation Components, Inc.





# HD Fiberglass iBlocks™

## Product Description

INSULATION COMPONENTS Fiberglass iBlocks™ are 20 PCF density molded fiberglass which is yellow in color. Fiberglass iBlocks™ are designed to be used along with IC iShields to ensure that the pipe insulation does not compress at each hanger location. Fiberglass iBlocks™ enhance thermal and vibration control properties of the entire insulation system. ALL units are 100% manufactured in the USA.

- Service temperature of -150° F to max of +650° F.
- 0.2% by volume, 96 hrs. at 120° f. 96% RH Moisture Absorption.
- Compressive strength of nominal 5% deflection @ 30 PSI.
- 10% deflection @ 80 PSI. 13. 7 / 0.8 - Flame spread index/smoke development.
- K= .30 (stable, non-deteriorating)



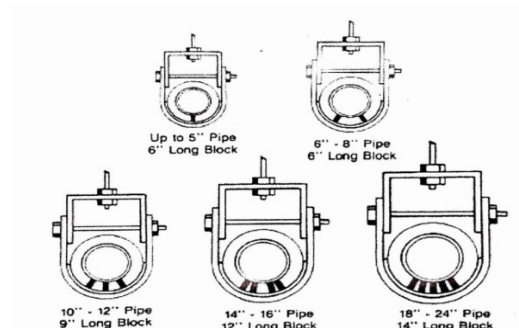
## Installation

Fiberglass iBlocks™ are placed inside the pipe insulation at the hanger location. Before applying the pipe insulation, simply notch out the insulation with an insulation knife and replace insulation piece with the appropriately sized iBlock™.

## Product Detail

Physical Properties	Specification Compliance
Pipe Size	½" to 30"
Service Temperature °F	-150 to +650 °F

SIZE	PCS/BOX	PCS/BUNDLE
1" X 1" X 6"	300	12
1½" X 1" X 6"	200	9
1½" X 1½" X 6"	150	6
2" X 1½" X 6"	120	4
2" X 2" X 6"	75	4



Unless otherwise indicated, data shown are typical values obtained from representative production samples by the material manufacturer. This data may be used as a guide for design purposes but should not be construed as specifications. This information is furnished without warranty, expressed or implied, except that it is accurate to the best knowledge of Insulation Components, Inc. Insulation Components, Inc. assumes no legal responsibility for use or reliance upon this data. For information regarding specific application of this product please contact Insulation Components, Inc.





## Banders - Tensioners - Chip Brushes - Bungee Cords - Staples Pipe Calipers - Sharpening Stones

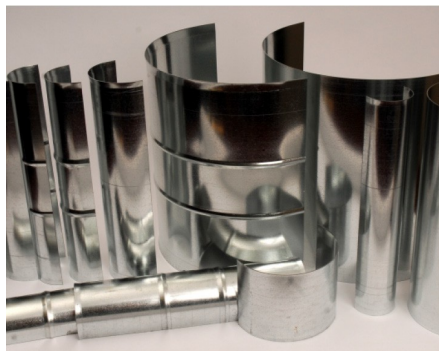


- iTools™ ride along on freight allowed orders.
- Choose from a wide variety of Mechanical Insulation essentials.
- Each product packaged and clearly labeled with description and quantity.

## ISHIELDS SIZING CHART

Iron Pipe Size (Inches)	Insulation Thickness (Inches)							
	1/2	1	1-1/2	2	2-1/2	3	3-1/2	4
3/8	2.0	3.0	3.5	/	/	/	/	/
1/2	2.0	3.0	4.0	5.0	6.5	7.5	8.5	9.5
3/4	2.0	3.0	4.0	5.0	6.5	7.5	8.5	9.5
1	2.5	3.5	4.5	5.5	6.5	7.5	8.5	9.5
1-1/4	3.0	3.5	5.0	5.5	6.5	7.5	9.5	10.5
1-1/2	3.0	4.0	5.0	6.5	7.5	8.5	9.5	10.5
2	3.5	4.5	5.5	6.5	7.5	8.5	9.5	10.5
2-1/2	4.0	5.0	6.5	7.5	8.5	9.5	10.5	11.5
3	4.5	5.5	6.5	7.5	8.5	9.5	10.5	11.5
3-1/2	5.0	5.0	7.5	8.5	9.5	10.5	11.5	12.5
4	5.5	6.5	7.5	8.5	9.5	10.5	11.5	12.5
4-1/2	6.0	6.0	8.5	9.5	10.5	11.5	12.5	14.0
5	6.5	7.5	8.5	9.5	10.5	11.5	12.5	14.0
6	7.5	8.5	9.5	10.5	11.5	12.5	14.0	15.0
7	8.5	9.5	10.5	11.5	12.5	14.0	15.0	16.0
8	9.5	10.5	11.5	12.5	14.0	15.0	16.0	17.0
9	10.5	11.5	12.5	14.0	15.0	16.0	17.0	18.0
10	11.5	12.5	14.0	15.0	16.0	17.0	18.0	19.0
11	12.5	14.0	15.0	16.0	17.0	18.0	19.0	20.0
12	14.0	15.0	16.0	17.0	18.0	19.0	20.0	21.0
14	15.0	16.0	17.0	18.0	19.0	20.0	21.0	22.0
15	16.0	17.0	18.0	19.0	20.0	21.0	22.0	23.0
16	17.0	18.0	19.0	20.0	21.0	22.0	23.0	24.0
17	18.0	19.0	20.0	21.0	22.0	23.0	24.0	25.0
18	19.0	20.0	21.0	22.0	23.0	24.0	25.0	26.0
19	20.0	21.0	22.0	23.0	24.0	25.0	26.0	27.0
20	21.0	22.0	23.0	24.0	25.0	26.0	27.0	28.0

Above numbering system refers to outside diameter of fittings.



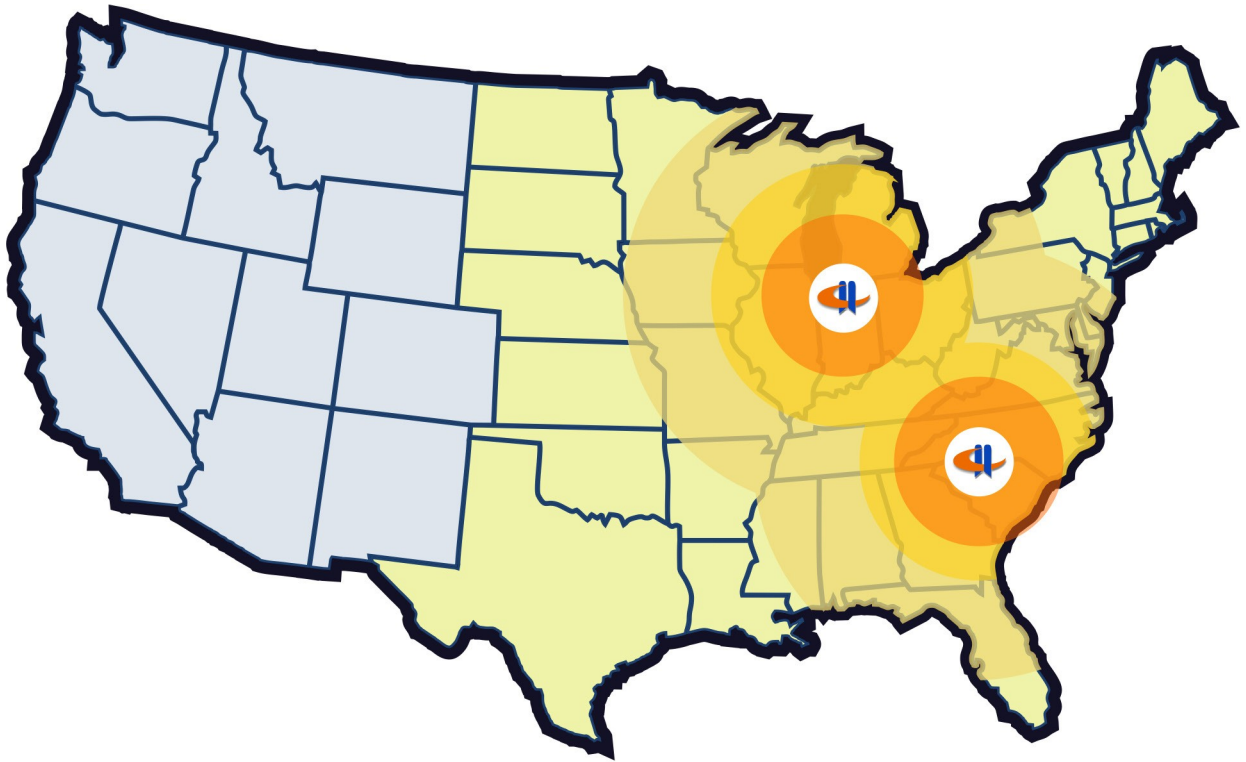
Wide range of sized and styles.



Packaged in boxes or buckets with each shield marked with O.D. size.







Insulation Components, Inc, is growing to better serve the needs of the Plumbing, HVAC and Mechanical Insulation industry.

I want to take this opportunity to thank all of our customers, employees, sales reps, vendors and partners for contributing to the growth and success of Insulation Components, Inc. as we surpass our 18th year in business.

A handwritten signature in black ink that reads "Kevin Marvel".

Kevin Marvel  
President

Proud Member Of





## Insulation Components, Inc.

Insulation Components, Inc. manufactures and sells quality Plumbing, HVAC and Mechanical Insulation products. We are the exclusive provider of iShields™, Insulated iShields™, iNserts™, and iBlock™ pipe supports. We ship throughout the United States and Canada. Please contact us for your product needs.



13301 Chippewa Blvd., Mishawaka, IN 46545 [InsulationComponents.com](http://InsulationComponents.com)  
[orders@insulationcomponents.com](mailto:orders@insulationcomponents.com) Phone: 574-258-1885 Fax: 866-565-0359