

Elementum™ Phomi EconiClay™
Architectural Photography Collection



Menu

- New Overseas
- Market
- Hotels
- Real
- Estate
- Schools
- Hospital
- City Renewal
- Public
- Buildings
- Beautiful
- Countryside



New Samples

Public Buildings | Basketball Court



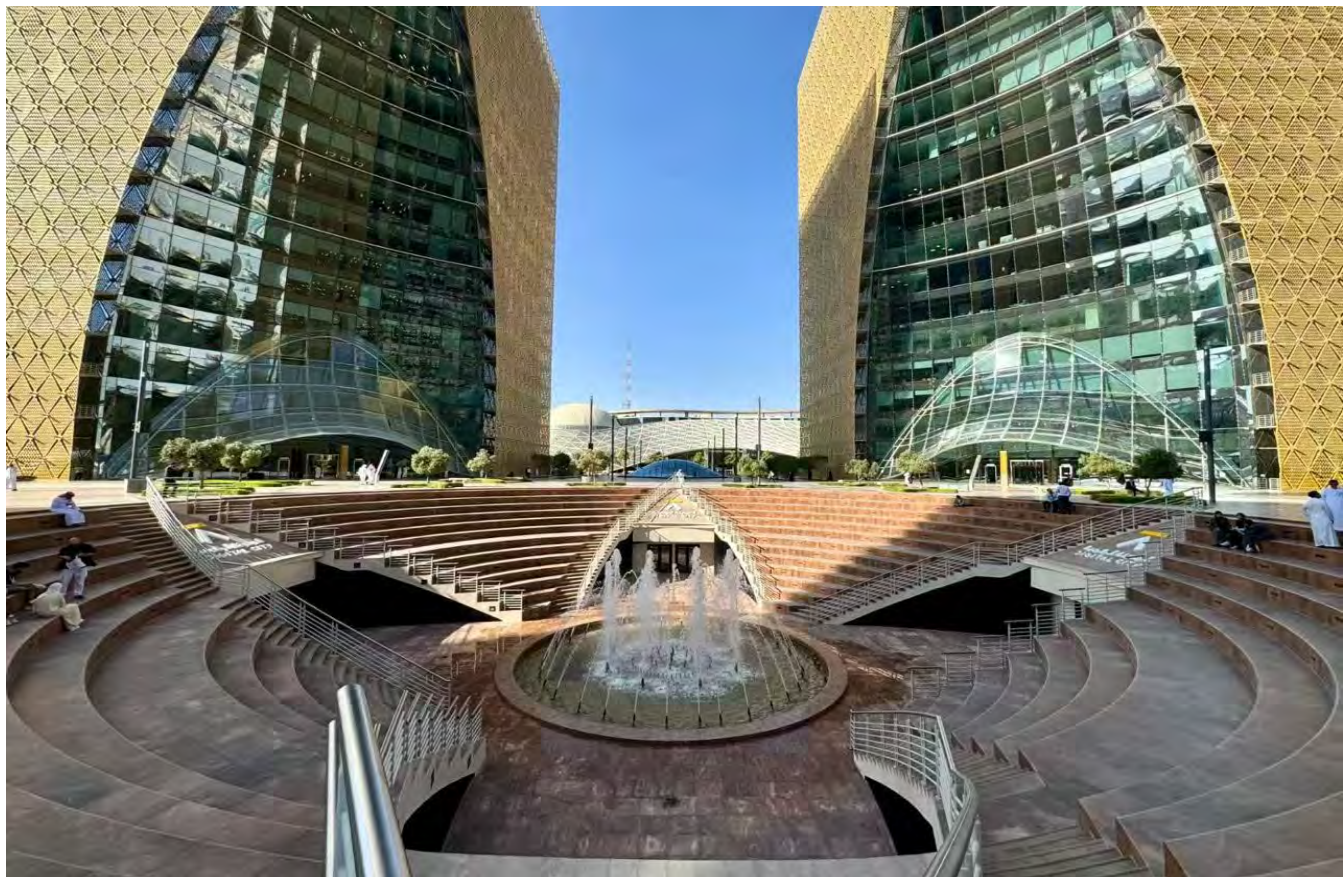
Year: 2025
Product Used: PolyWood
Amount of Products Used: 300m²

Public Buildings | ecco retail stores



Year: 2020
Product Used: 云山黄洞石 中灰清水
Amount of Products Used: 300m²

Public Buildings | Digital City-Riyadh, Saudi Arabia



Year: 2025
Product Used: 洞石
Amount of Products Used: 3000
m²

Hotel properties | AL WAHA Hotel-Riyadh, Saudi Arabia



Year: 2020
Product Used: 洞石
Amount of Products Used: 3000m²

Public Buildings | Ladun Square- Commercial Building



Hotel properties | Dorar Downtown Building

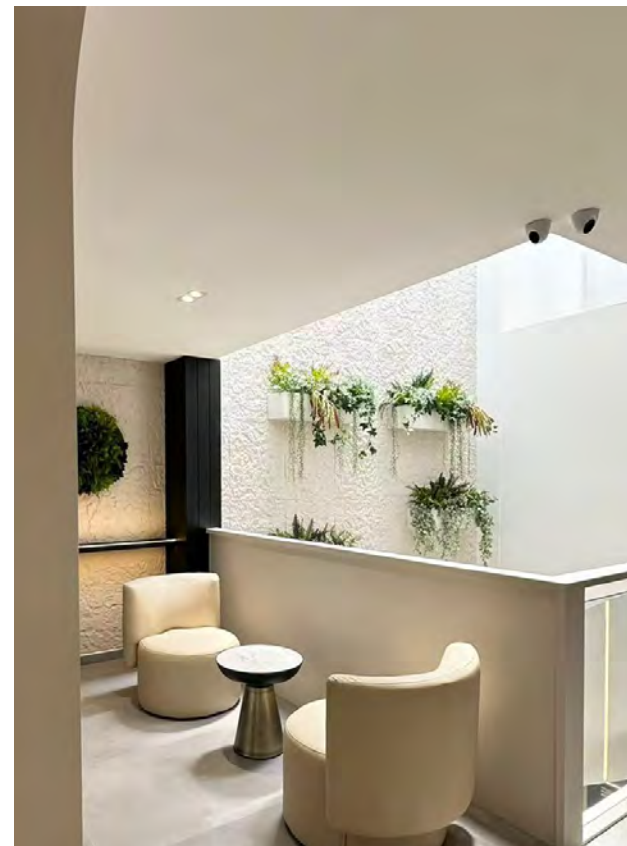


Year: 2025
Product Used: 洞石
Amount of Products Used: 3000
m²

Year: 2020
Product Used: 洞石
Amount of Products Used: 3000m²

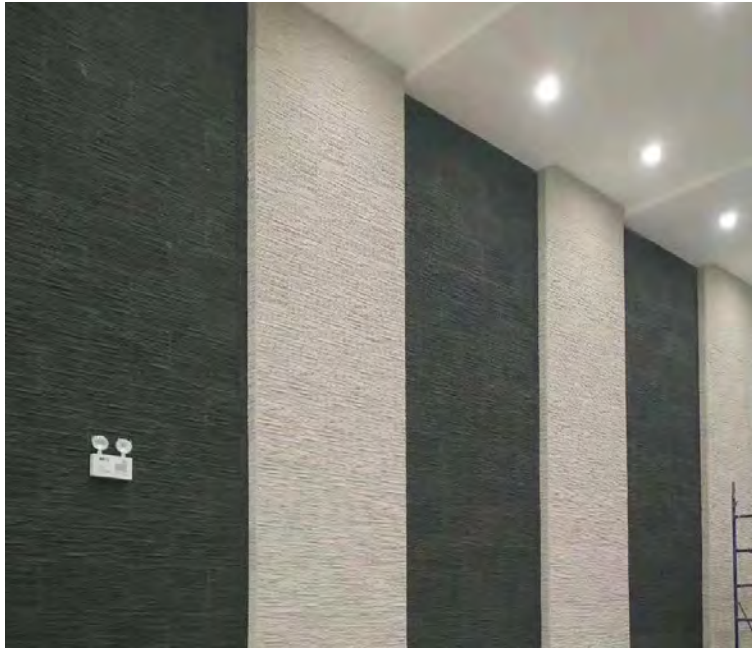


Year: 2023
Product Used: 云山黄大理石
Amount of Products Used: 300m²



Year: 2024
Product Used: 斧开石-H001
Amount of Products Used: 50m²

Business & School | Elevator Hall



Year: 2023
Product Used: 云山白洞石
Amount of Products Used: 300m²

Business & School | Yan Fengwei Restaurant, Foshan, Guangzhou



Year: 2024
Product Used:
Amount of Products Used: 150m²



Year: 2023
Product Used: 劈面蘑菇石052
Amount of Products Used: 300m²



Year: 2024
Product Used:
Amount of Products Used: 150m²

Hotel Properties | Qinyue Hotel, Guangzhou

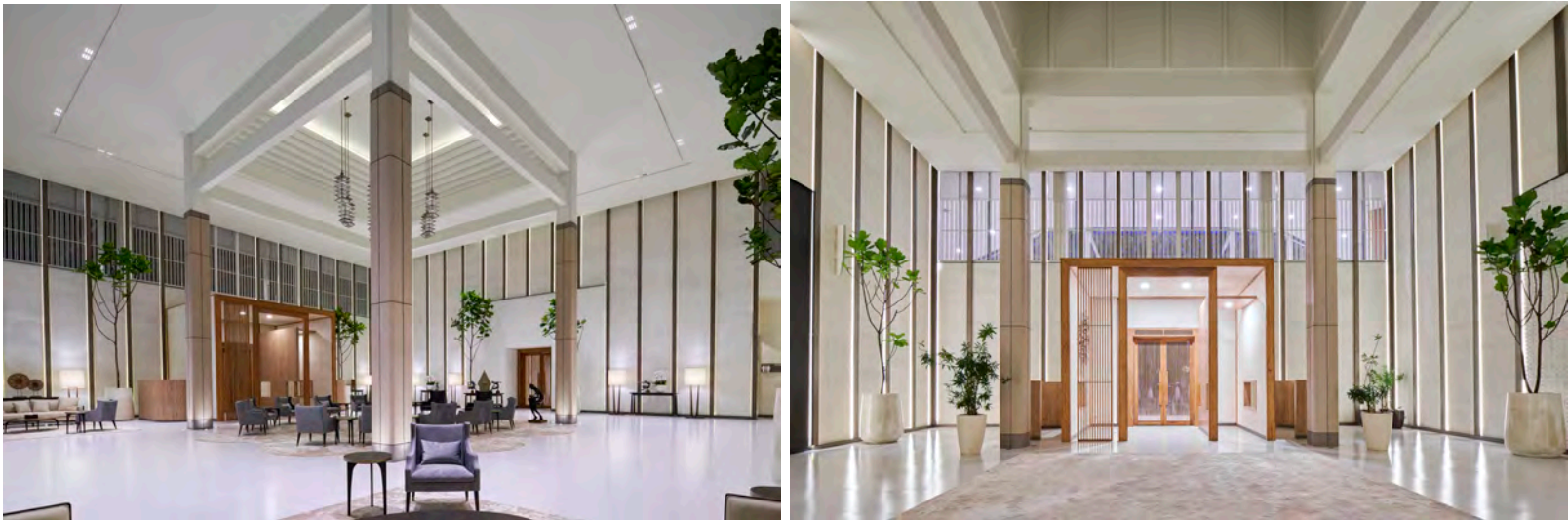


Year: 2023
Product Used:
Amount of Products Used: 500m²

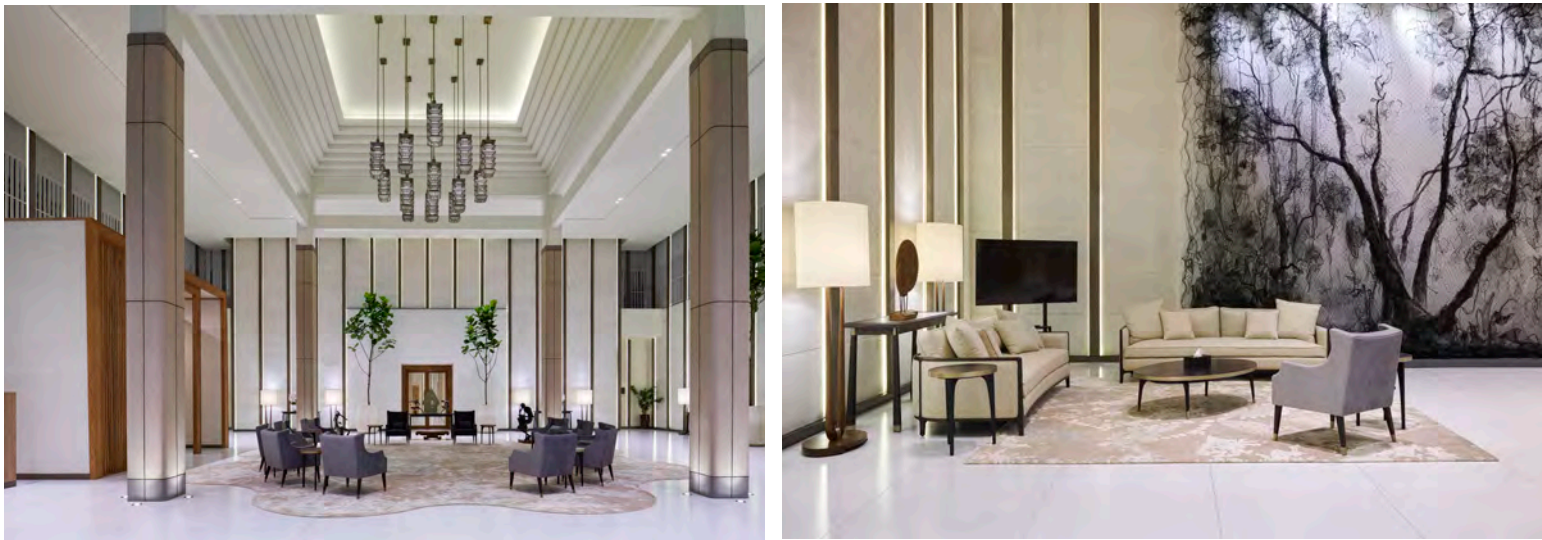
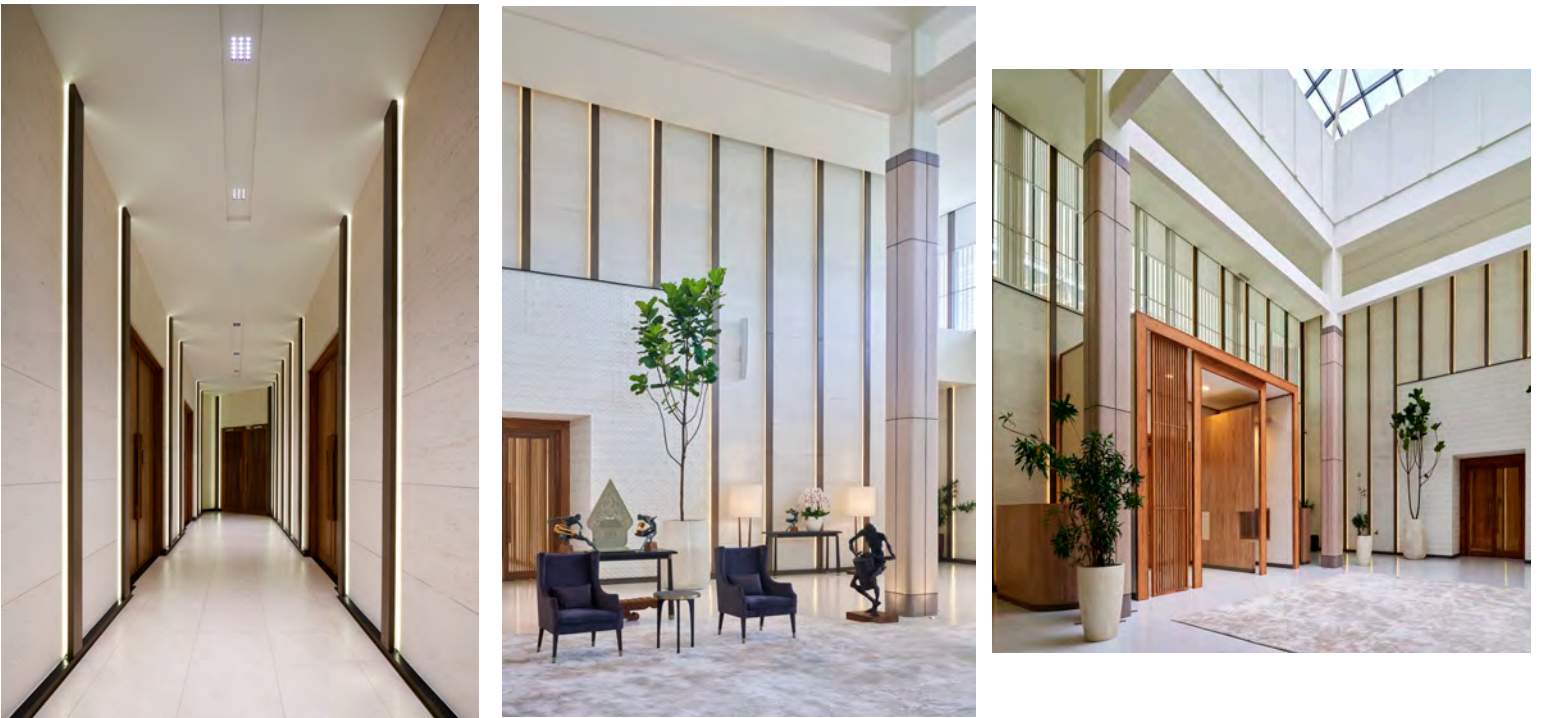
Hotel Properties | Hengda Hotel, Ocean Flower Island, Hainan



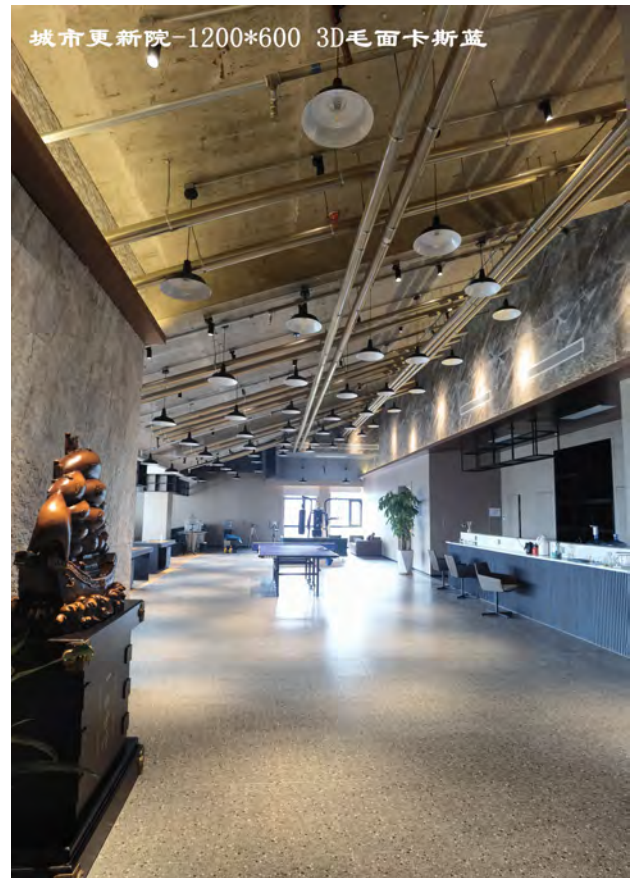
Year: 2022
Product Used: 海花岛
Amount of Products Used: 500m²



Year: 2023
Product Used:
Amount of Products Used: 500m²



Year: 2022
Product Used: 海花岛
Amount of Products Used: 500m²



Year: 2023
Product Used: 毛面黑金花、毛面卡斯蓝
Amount of Products Used: 500m²



**Overseas
Marketing**



Year:2018
Product used:楠
使用数量:5000m²



竣工年限:2014年
使用产品:铁力木
使用数量:4000m²

Overseas Market | The Ornate Hotel Located in Guwahati, India



Year:2019
Product Used: 金灰
Number of Products Used:1900m²

Overseas Market | Tea Villa Cafe in Mumbai India



Year:2017
Product Used:A面窑变砖031042、085089
Number of Products Used:3000m²



Year:2018
Product Used:洞石052056
Number of Products Used:3000m²



Year:2019
Product Used:麻编089
Number of Products Used:2000m²



Year:2018
Products Used:K面劈开砖326、310
Number of Products Used:1500m²



Year:2018
Products Used:洞石052 Number of
Products Used:3000m²



Year:2018
Products Used:A面窑变砖085089
Number of Products Used:4000m²



Year:2014
Products Used:南岛壁岩 030,031,043
Number of Products Used:10000m²



Year:2019
Products Used:晴岚石Amount
of Products Used:2000m²



Year:2021年
Products Used:白金洞石, 银灰洞石
Amount of Products Used:3000m²



Year:2021
Products Used:G面窑变砖085089
Amount of Products Used:5500m²



Year:2018
Products Used:A面窑变砖 308317
Amount of Products Used:2000m²



Year:2017
Products Used:A面劈开砖090
Amount of Products Used:3500m²



Year:2018
Products Used:白金洞石
Number of Products Used:2000m²



Year:2018
Products Used:洞石052053
Amount of Products Used:500m²



Year:2020
Products Used:R面窑变砖 085089
Amount of Products Used:3000m²



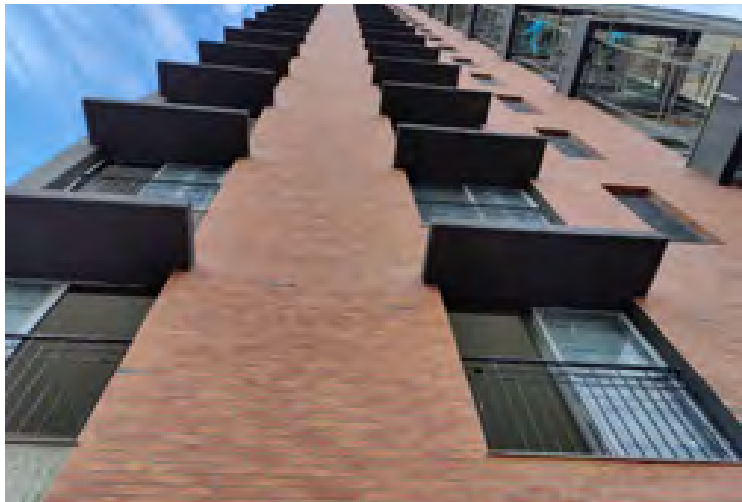
Year:2021
Product Used:A面窑变砖085089、岚山石
Amount of Products Used:900m²



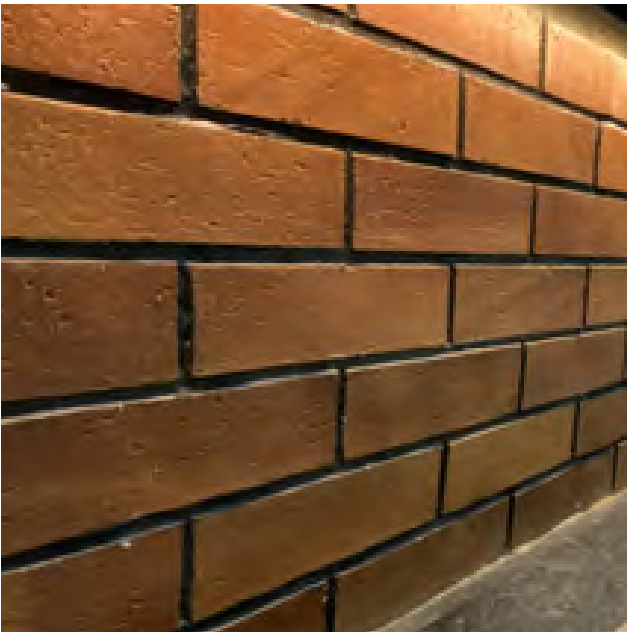
Year:2021
Products Used:晴岚石
Amount of Products Used:500m²



Year:2021
Products Used:-
Amount of Products Used:-m²



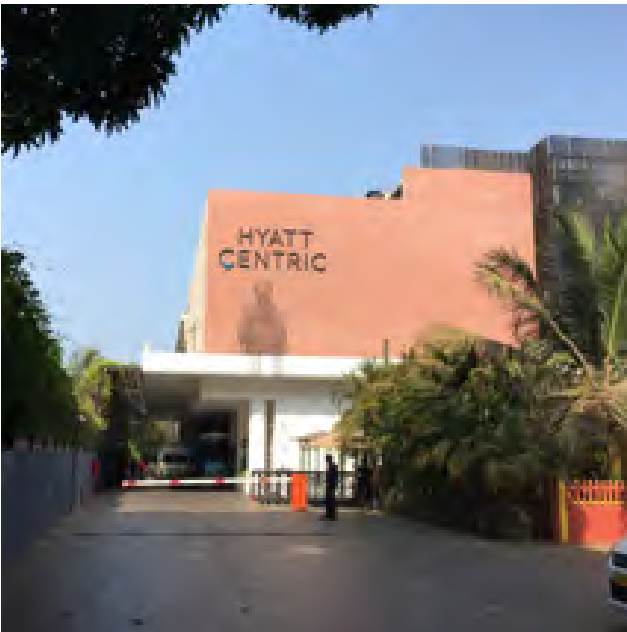
Year:2021
Products Used:A面窑变砖085089
Amount of Products Used:9600m²



Year:2020
Products Used:A面劈开砖 087089
Amount Used:3500m²



Year:2019
Products Used:A面劈开砖087089
Amount of Products Used:6000m²



Year:2018
Products Used:毛面花岗岩364
Amount of Products Used:700m²



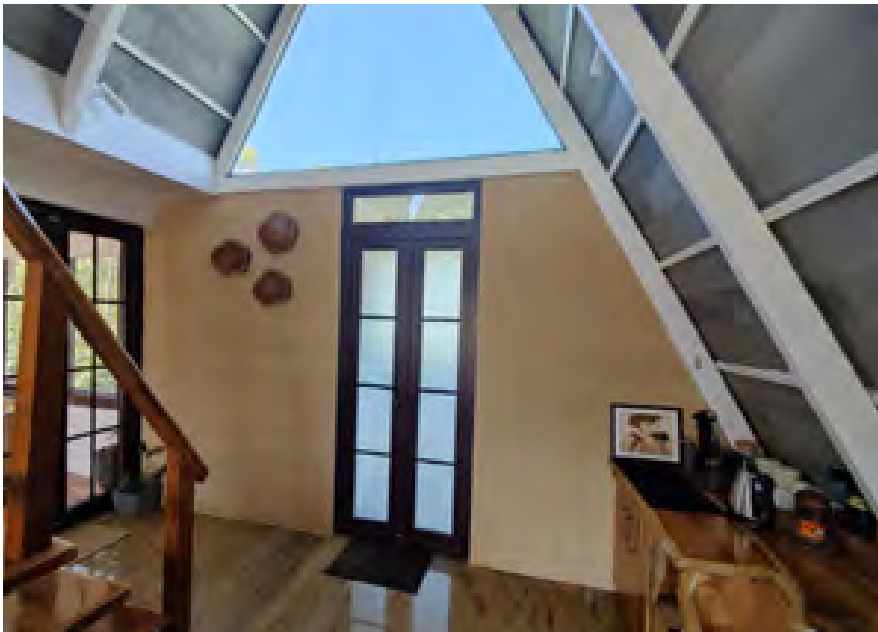
Year:2020
Products Used:劈面蘑菇石 221
Amount of Products Used:2000m²



Year:2021
Products Used:毛面花岗岩315、布纹石052、K面砖228030
Amount Used:1500m²



Year:2019
Products Used:南岛岁月痕043
Amount of Products Used:500m²



Year:2020
Products Used:铁青木、麻编056、A面劈开砖052
Amount of Products Used:2000m²



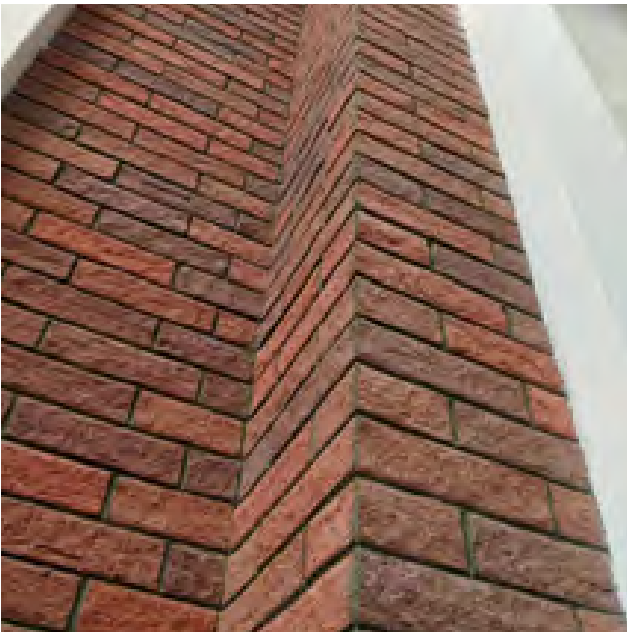
Year:2020
Products Used:燕山石、分婉石
Amount of Products Used:3000m²



Year:2020
Products Used:A面劈开砖087089
Amount of Products Used:5000m²



Year:2020
Products Used:壁岩+凿菇石
Amount of Products Used:4000m²



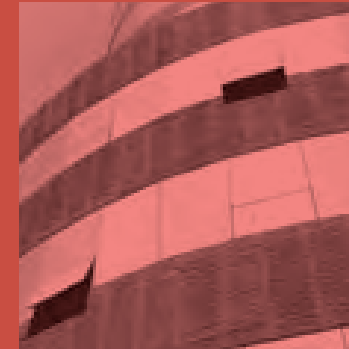
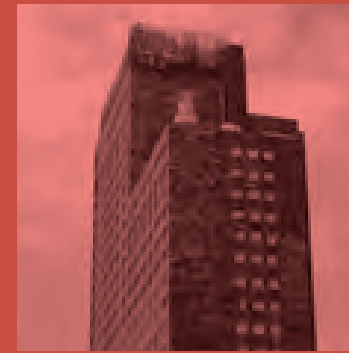
Year:2019
Products Used:K面劈开砖326C4
Amount of Products Used:2000m²



Year:2020
Products Used:35连体条石、A砖
Amount of Products Used:1500m²



Year:2021
Products Used:劈面蘑菇石、毛面花岗岩、K面劈砖
Amount of Products Used:5500m²



Hotel Properties

Hotel Properties | Rosewood Hotel, Sanya, Hainan



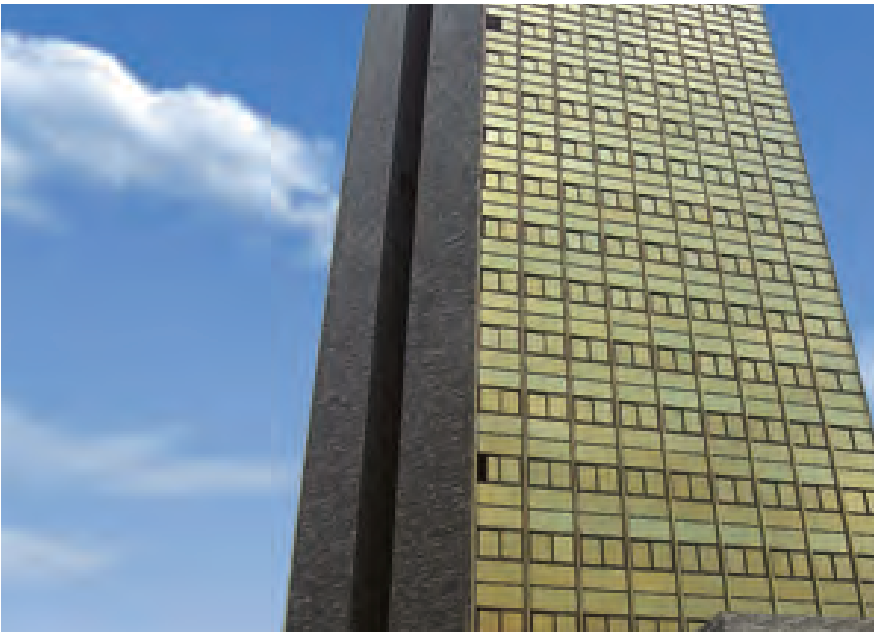
Year:2017
Products Used:白色枫木、麻编、K面劈开砖、R劈开砖
Amount of Products Used:30000m²

Hotel Properties | MengMu Hot Springs Hotel in Taiyuan City, Shanxi



Year:2020
Products Used:G面砖031042
Amount of Products Used:5000m²

Hotel Properties ■ He House Hotel in Guiyang, Guizhou



Year:2014
Products Used:G面劈开砖 031,038,043
Amount of Products Used:20000㎡

Hotel Properties ■ Doubletree by Hilton in Shanwei City, Guangzhou



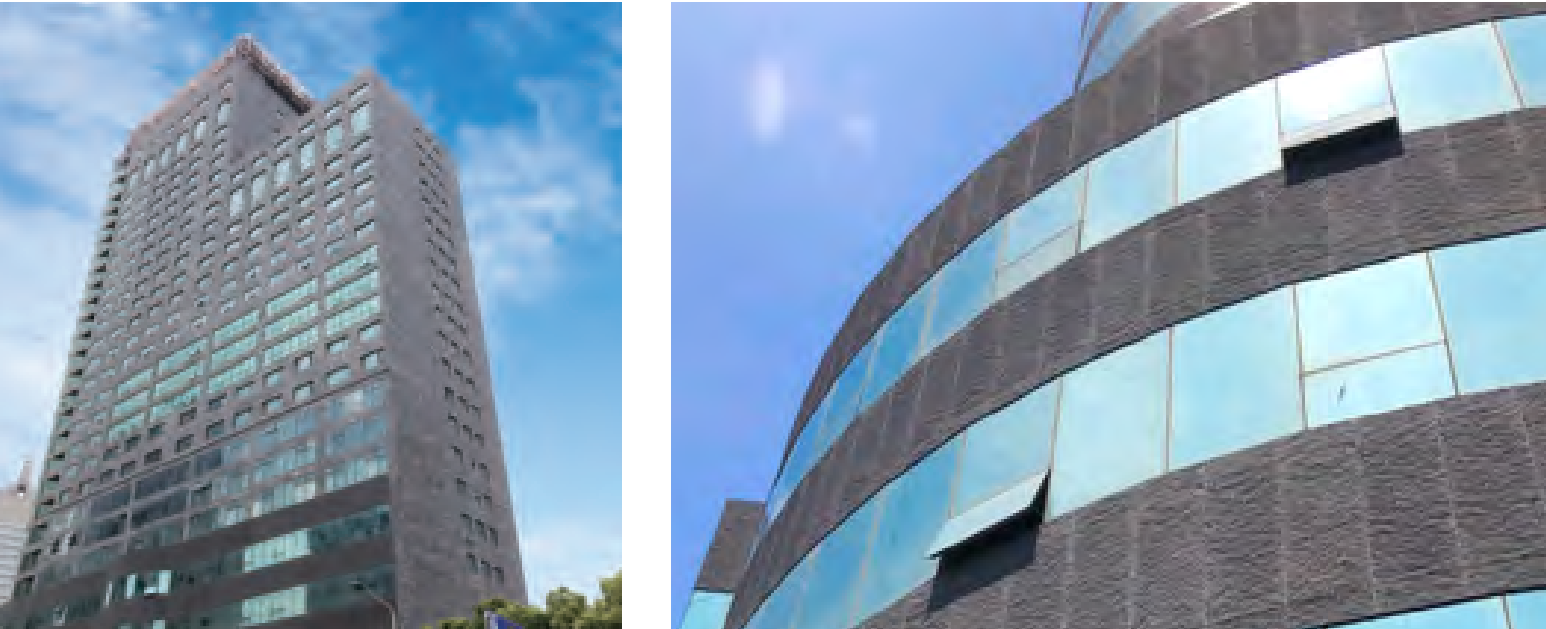
Year:2018
Products Used:枫木
Amount of Products Used:5000㎡



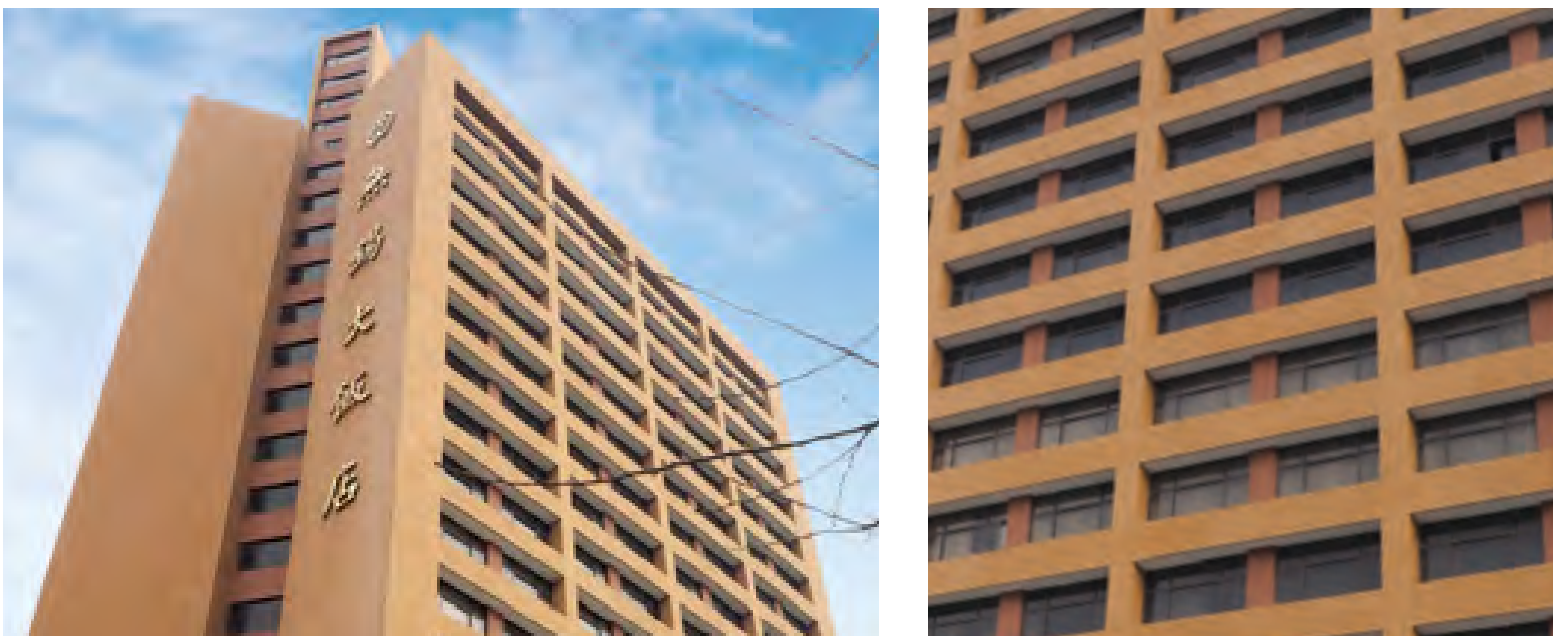
Year:2019
Products Used: 观叶蔓
Amount of Products Used:6000m²



Year :2021
Products Used: 洞石052kz
Amount of Products Used:2000m²



Year:2018
Products Used:黛烟石
Amount of Products Used:25000㎡



Year:2017
Products Used:A面劈085
Amount of Products Used:20000㎡

Hotel Properties ■ Vacation Villa in Huzhou, Zhejiang



Year:2014
Products Used:麻编
Amount of Products Used:18000m²

Hotel Properties ■ Xitang Hotel in Guangzhou, Guangdong



Year:2021
Products Used:磨052
Amount Used:400m²

Hotel Properties ■ Royal Orchid International Golf Club in Foshan, Cuangdong



Year:2017
Products Used:毛面花岗岩043、鳄鱼皮031
Amount of Products Used:1000m²

Hotel Properties ■ Wenyuange Hotel inHan City, Shanxi



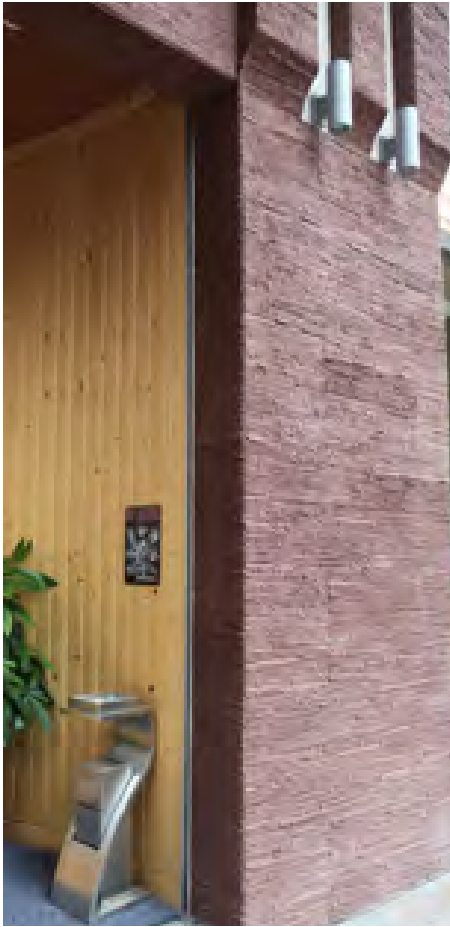
Year:2013
Products Used:条石混搭
Amount of Products Used:6000m²

Hotel Properties ■ Phoenix River Hot Springs Villa in Liuzhou City, Guangxi



Year:2014
Products Used:板岩054
Amount of Products Used:1000m²

Hotel Properties ■ California Roll Restaurant in Guangdong, Guangzhou



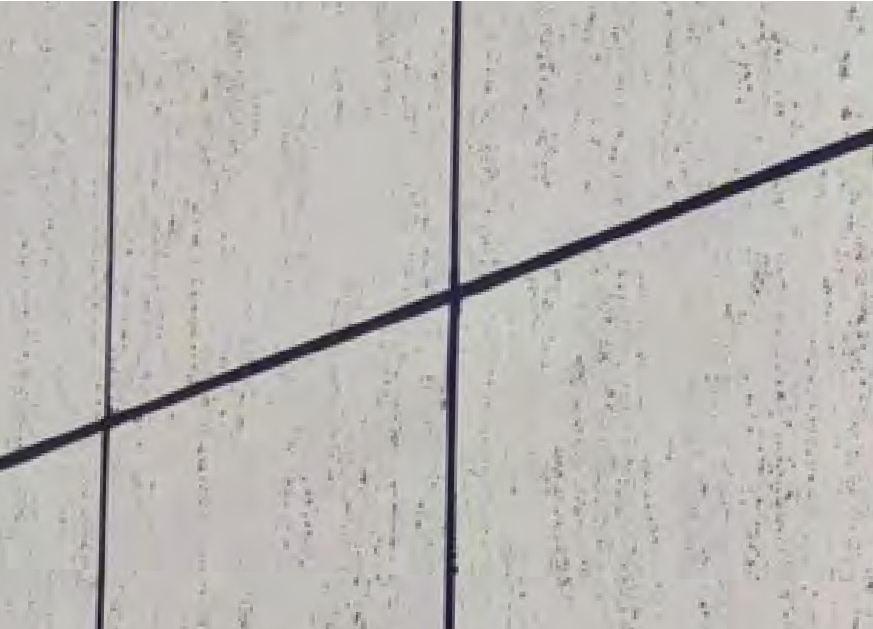
Year:2013
Products Used:北美布纹石052、W麻编089、北欧雪松054、G面劈砖038
Amount of Products Used:2000m²

Hotel Properties ■ Binjiang Intercontinental Hotel in Nantong City, Jiangsu



Year:2013
Products Used:A面劈开砖 221、228、231
Amount of Products Used:4000m²

Hotel Properties ■ Baiteng Holiday Hotel in Zhuhai, Guangzhou



Year:2021
Products Used:052
Amount of Products Used:5000m²

Hotel Properties ■ Elegant Hotel in Zhujiang New town in Guangzhou, Guangdong



Year:2020
Products Used :北布纹石
Amount of Products Used:1000m²

Hotel Properties ■ Hengda Haihua Island in Danzhou, Hainan The Peninsula Hotel



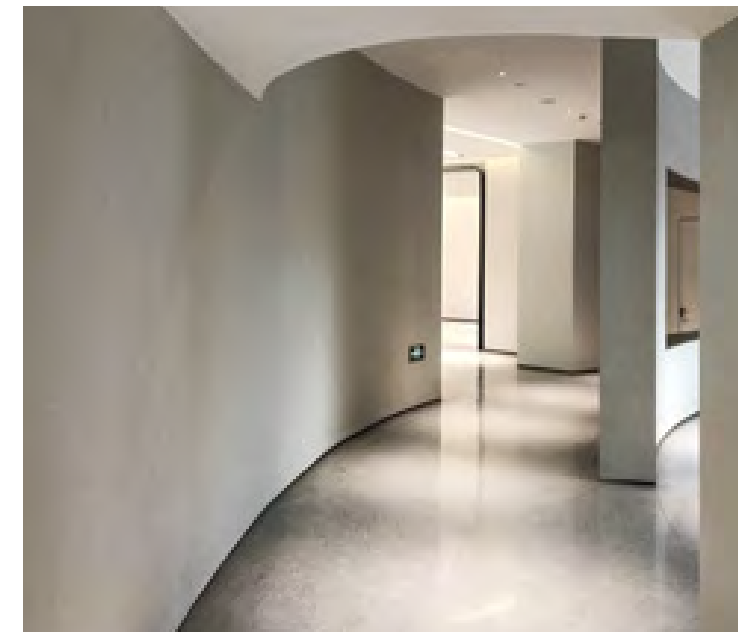
Year:2021
Products Used:恒大定制编织纹
Amount of Products Used:14000m²

Hotel Properties ■ Kare Prime Hotel in Dapeng, Shenzhen



Year:2021
Products Used:刷面石灰050
Amount of Products Used:1000m²

Hotel Properties ■ Nature & Sunny Hotel in Shenzhen



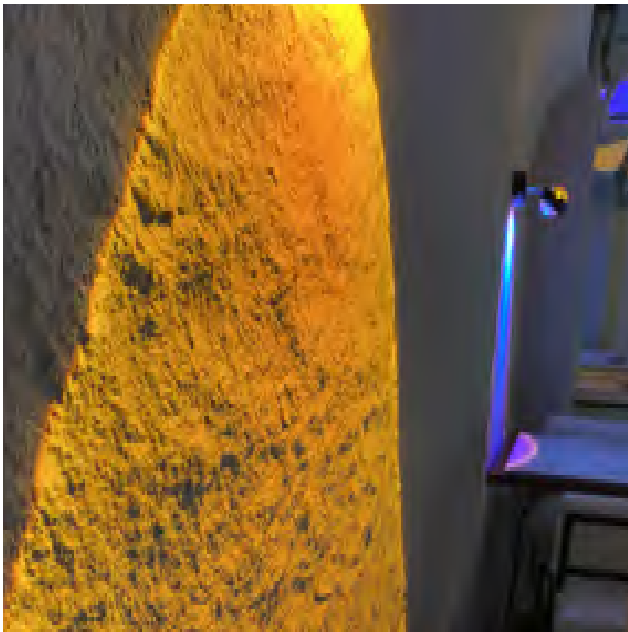
Year:2021
Products Used:刷面石灰岩
Amount of Products Used:1500m²

Hotel Properties ■ Wild Forest Grand Hotel in Liangping, Chongqing



Year:2013
Products Used:G面劈开砖038C4
Amount of Products Used:4000m²

Hotel Properties ■ MeiFeng Hongkong Style Cafe in Suzhou, China



Year:2021
Products Used:英安岩052
Amount of Products Used:400m²



Business Properties

Business Properties ■ JintaiTang 618 Business Center in Xi'an City, Shanxi



Year:2021
Products Used:岁月痕、粗纹线石灰石
Amount of Products Used:3000㎡

Business Properties ■ Liuzhao Business Buildings in Shaxin town, Shanghai



Year:2017
Products Used:板岩、花岗岩
Amount of Products Used:40000㎡

Business Properties ■ Old Town Garden Residentials in Yangxin County, Shandong



Year:2016
Products Used:A面劈开砖038C4
Amount of Products Used:140000m²

Business Properties ■ Xinda Sky Business Street in Hefei city, Anhui



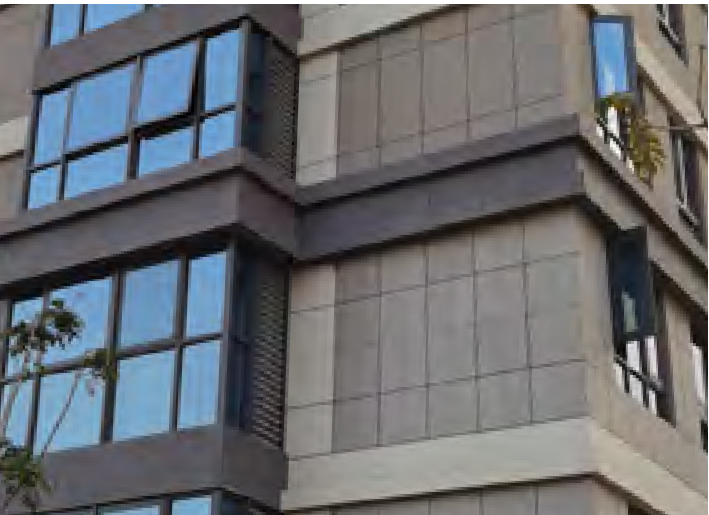
Year:2017
Products Used:A面劈开砖326C4
Amount of Products Used:50000m²

Business Properties | Morning Hours Residential Building in Wuxi, Jiangzhe



Year:2020
Products Used:K面劈开砖308317
Amount of Products Used:30000m²

Business Properties | Renowned Zhangfa Building in Xiamen, Fujian



Year:2019
Products Used:板岩206
Amount of Products Used:8000m²

Business Properties ■ Baoli Zhong Garden in Foshan, Guangdong



Year:2019
Products Used:红檀木
Amount of Products Used:20000m²

Business Properties ■ Baoli Three Triple Clouds Golf Course Mansion in Foshan, Guangdong



Year:2019
Products Used:红檀木
Amount of Products Used:24000m²

Business Properties ■ White Heron Bay Mansions in Gongzhou, Jiangsu



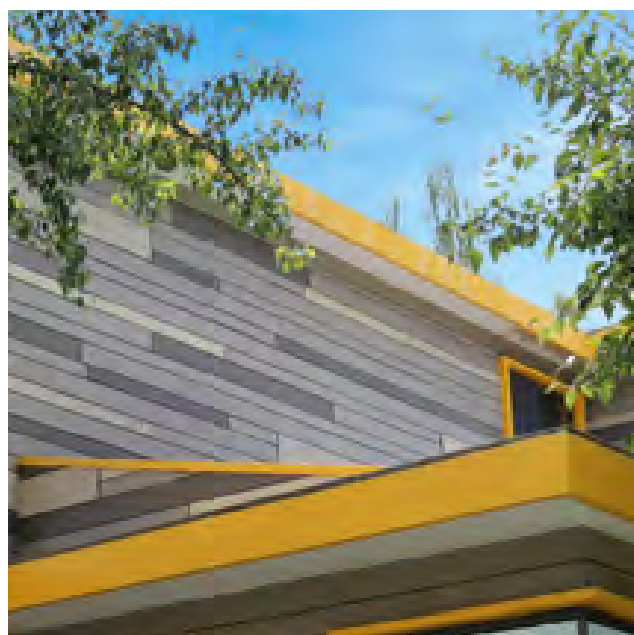
Year:2019
Products Used:A面劈开砖03043
Amount of Products Used:14000m²

Business Properties ■ Dongxun 2nd Residential District in Xi'an, Shanxi



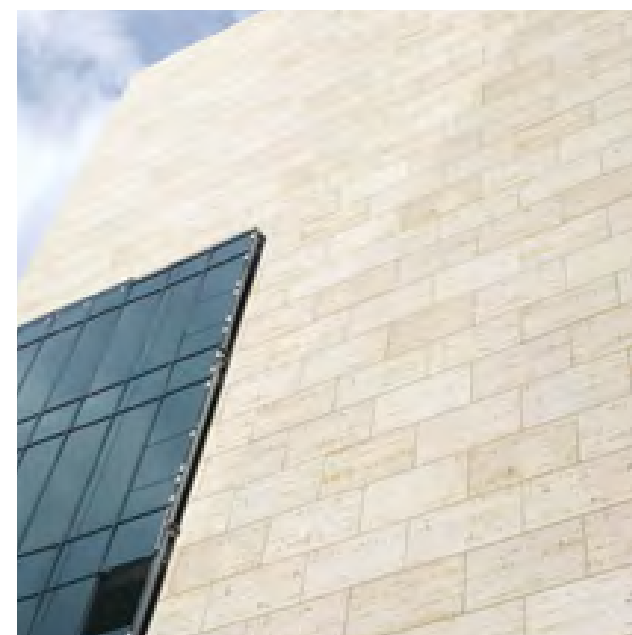
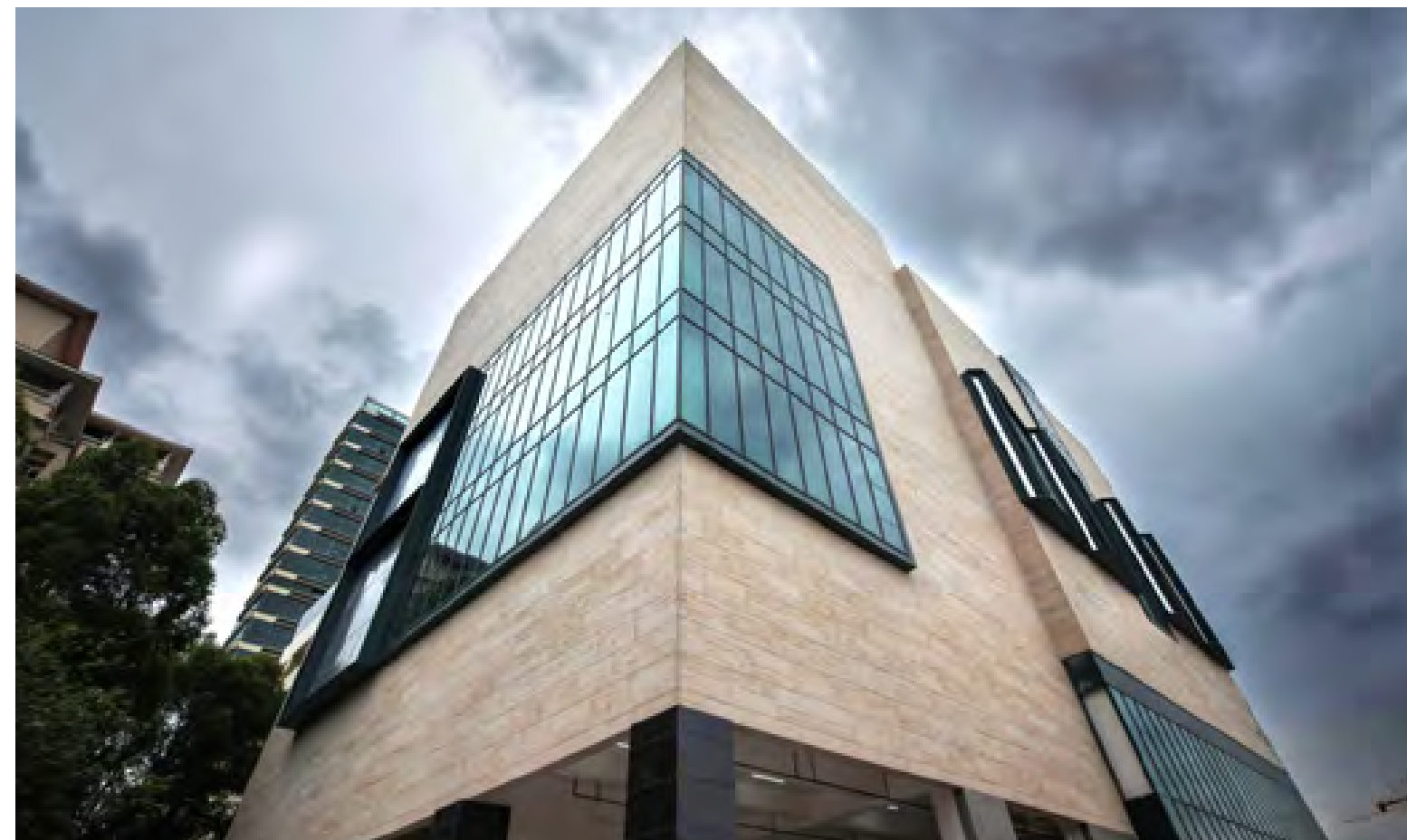
Year:2014
Products Used:A面劈开砖
Amount of Products Used:240000m²

Business Properties ■ Creation Harbor Villa in Lanzhou, Gansu



Year:2018
Products Used:条石混搭
Amount of Products Used:1000m²

Business Properties ■ Lingjun Square in Foshan, Guangdong



Year:2017
Products Used:白金洞石
Amount of Products Used:9000m²



Year:2017
Products Used:板岩052、徽山石
Amount of Products Used:22000m²



Year:2014
Products Used:A面劈开030、031
Amount of Products Used:262553m²

Business Properties ■ Jiangxi Pobuyi Ecological Town in Xingyi City, Guizhou



Year:2016
Products Used:红豆衫
Amount of Products Used:20000m²

Business Properties ■ Minmetals Residential Buildings in Beijing



Year:2015
Products Used:A面劈开砖328C,326C,310C
Amount of Products:8000m²

Business Properties ■ Vanke Peak in Guangzhou, Guangdong



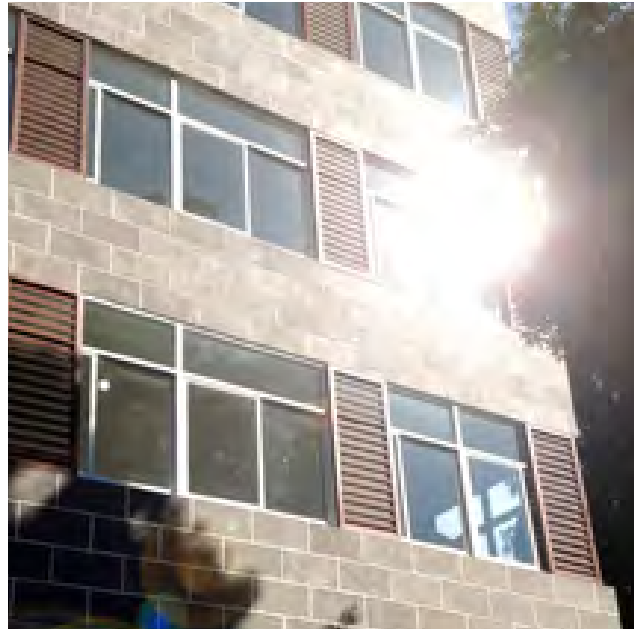
Year:2014
Products Used:条石混搭
Amount of Products Used:1000m²

Business Properties ■ New Bay Residential Building in Yichang city, Hubei



Year:2013
Products Used:平板砂岩
Amount of Products Used:35000m²

Business Properties ■ Guling Villa in Fuzhou, Fujian

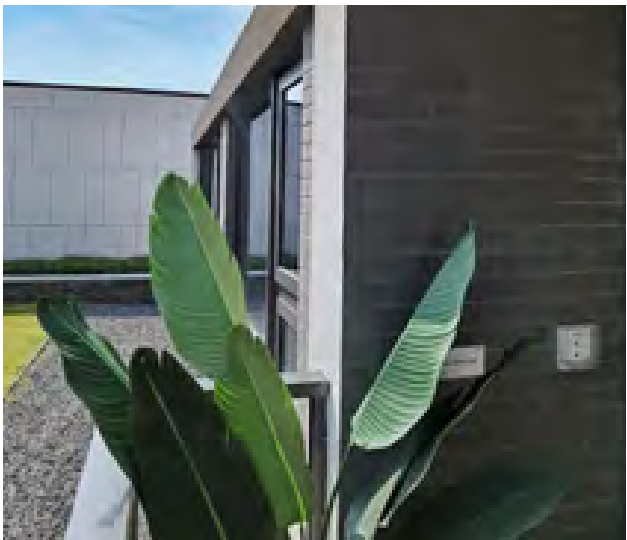


Year: 2013
Products Used: 凹凸砂岩038
Amount of Products Used: 4000m²

Business Properties ■ Yunshuitai No.1 Courtyard in Jining, Shandong



Year: 2020
Products Used: 板岩052
Amount of Products Used: 20000m²



Year:2021
Products Used:A面窑变砖031042、平板岩052
Amount of Products Used:4500m²

Year:2020
Products Used:粗纹线石052
Amount of Products Used:1500m²

Business Properties ■ Glory Garden Residential Buildings in Shanghai



Year:2014
Products Used:毛面花岗岩043、板岩052
Amount of Products Used:70000m²

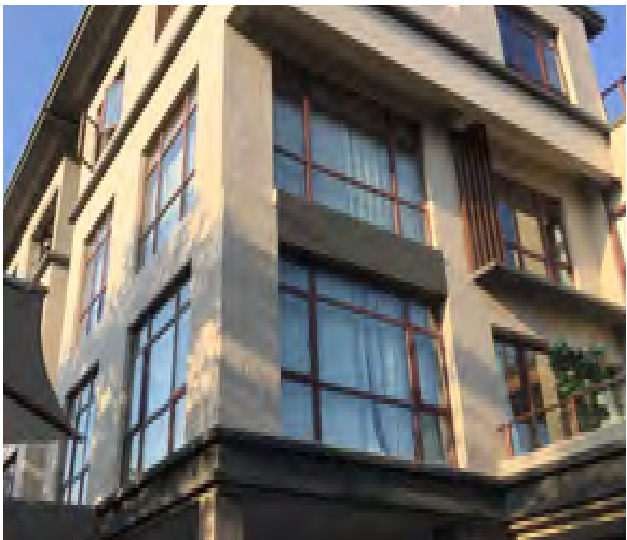
Business Properties ■ Luxury Yintai Senior Apartments in Rizhao, Shandong



Year:2018
Products Used:红豆杉
Amount of Products Used:15000m²

Business Properties

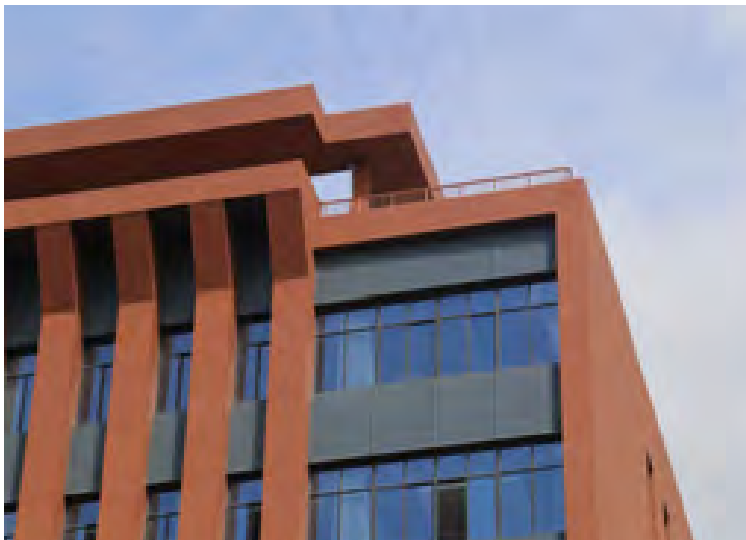
Taoran Bay Golden Spring Villas, Haitang District in Sanya, Hainan



Year:2018
Products Used:板岩052
Amount of Products Used:15000㎡

Business Properties

Shanghai National 863 Software Professional Incubator Base



Year:2014
Products Used:陶土板
Amount of Products Used:8000㎡

Business Properties ■ Desa Tofu Village, Jurong in Zhenjiang City, Jiangsu



Year:2020
Products Used:劈开砖灰
Amount of Products Used:23000m²

Business Properties ■ Golden Lucky Residential Building in Zhengzhou, Henan



Year:2015
Products Used:A面劈开砖364、310、328混色
Amount of Products Used:4000m²

Business Properties ■ Mentou District Yunzejia Residential Area in Beijijng

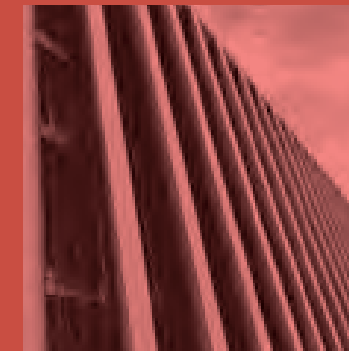
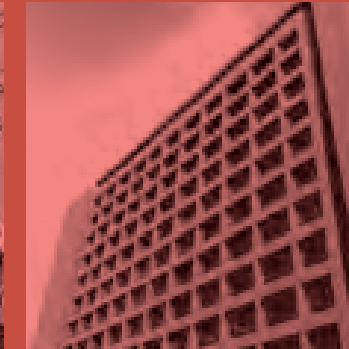
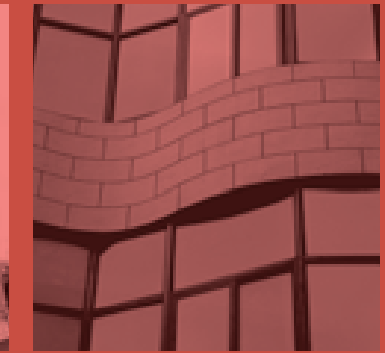


Year:2021
Products Used:A面劈开砖085、090
Amount of Products Used:6000㎡

Business Properties ■ Chimelong Animal World Panda 4D Cinema in Guangzhou, Guangdong



Year:2016
Products Used:壁岩038、030
Amount of Products Used:2000㎡



Schools & Hospitals



Year:2021
Products Used:壁岩052,053、A面劈开砖090,031、斧开石043
Amount of Products Used:15000㎡



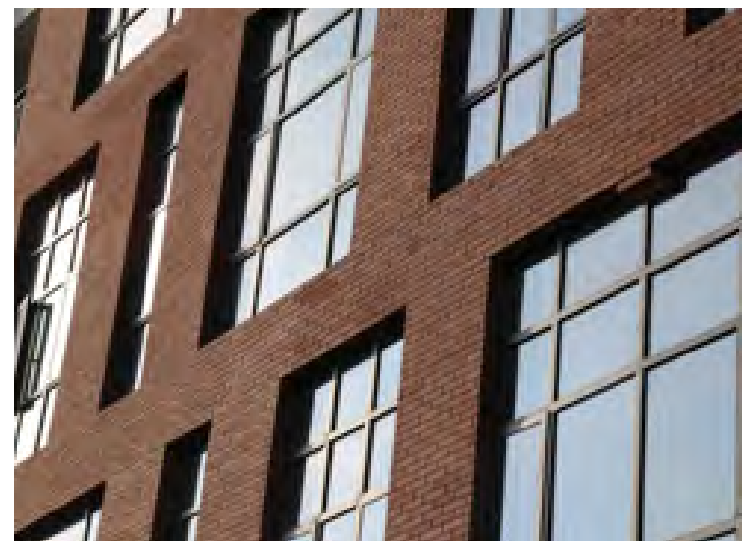
Year:2021
Products Used:斧开石038、G面窑变砖031042
Amount of Products Used:50000㎡



Year:2019
Products Used:A面劈开砖090, 031
Amount of Products Used:40000m²



Year:2018
Products Used:洞石052
Amount of Products Used:
25000m²



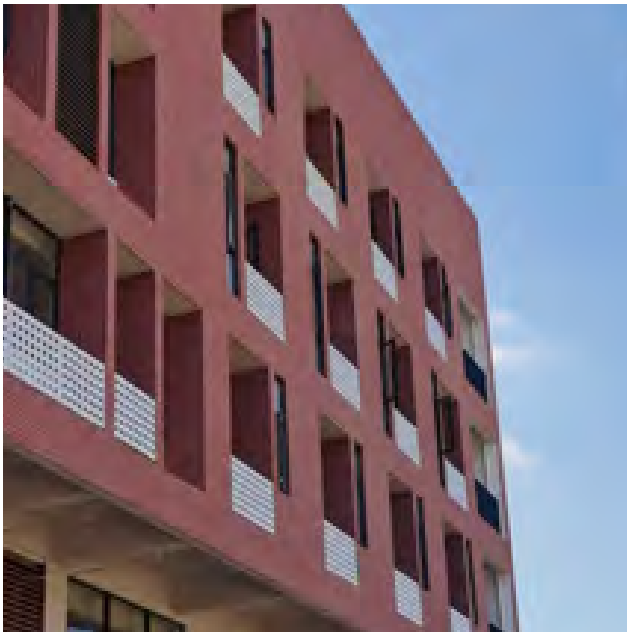
Year:2016
Products Used:A面劈开砖089-9, 板岩050
Amount of Products Used:6200m²



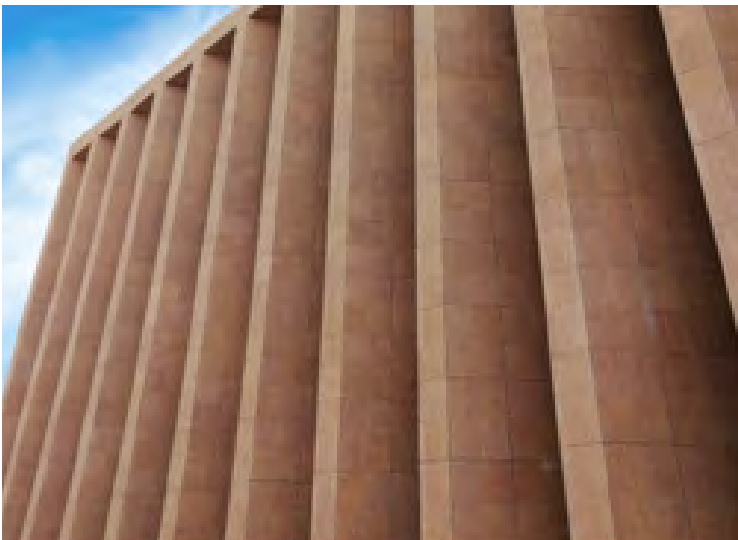
Year:2021
Products Used:北美布纹石、陶土板、板岩052、板岩221
Amount of Products Used:20000m²



Year:2021
Products Used:陶土板090、板岩054
Amount of Products Used:30000m²



Year:2021
Products Used:A面劈开砖090
Amount of Products Used:4000m²



Year:2020
Products Used:粗纹线石364369
Amount of Products Used:50000m²



Year:2020
Products:板岩052、板岩038
Amount of Products Used:6000m²



Year:2020
Products Used:晴岚石、A面劈开砖325
Amount of Products Used:20000m²



Year:2020
Products Used:A面劈开砖031,089
Amount of Products Used:6000m²



Year:2019
Products Used:A面劈开砖030,038
Amount of Products Used:70000m²



Year:2018
Products Used:A面劈开砖326C4
Amount of Products Used:9000m²



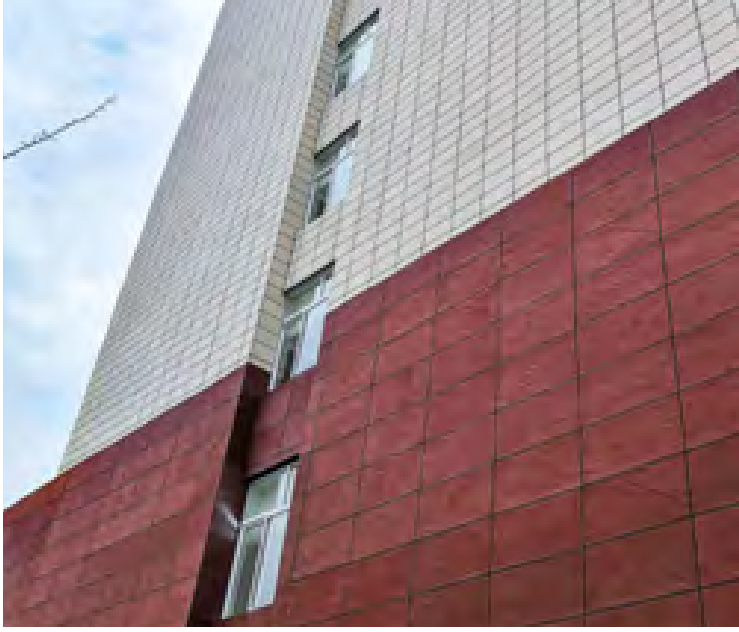
Year:2014
Product Used:斧开石 052、文莱板岩 052、平板砂岩 054
Amount of Products Used:200000m²



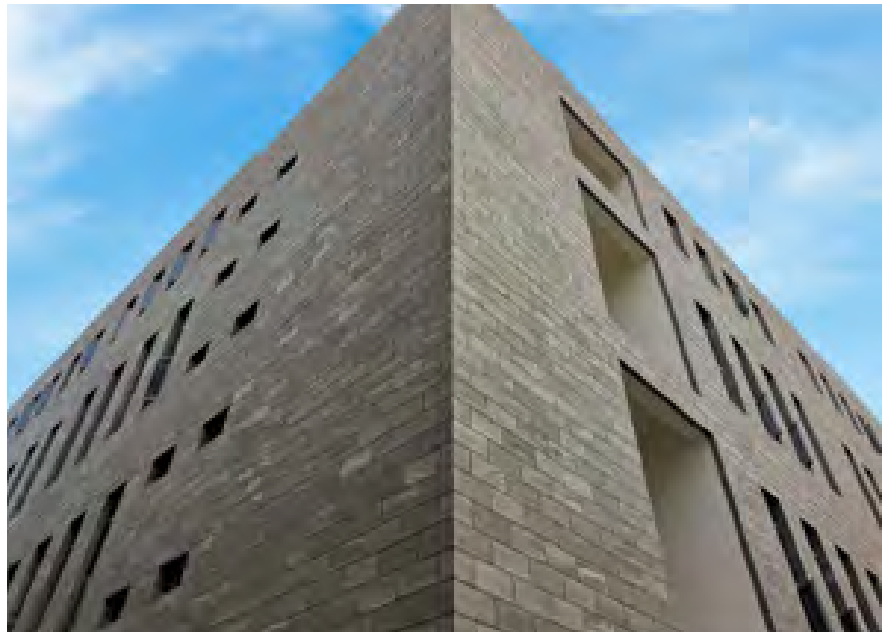
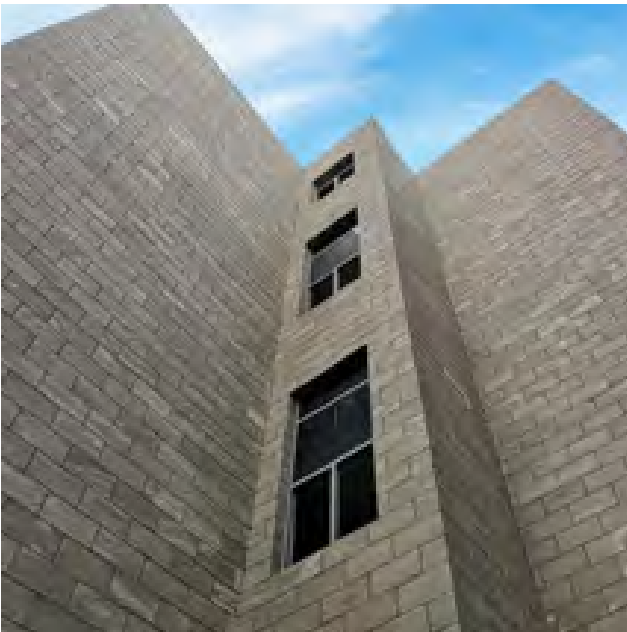
Year:2019
Products Used:A面劈开砖090
Amount of Products Used:15000m²



Year:2018
Product Used:板岩052, 089
Amount of Products Used:10000m²



Year:2018
Products Used:板岩052、089
Amount of Products Used:6000m²



Year:2018
Product Used:黛烟石
Amount of Products Used:4000m²



Year:2017
Products Used: A面劈开砖090
Amount of Products Used:80000m²



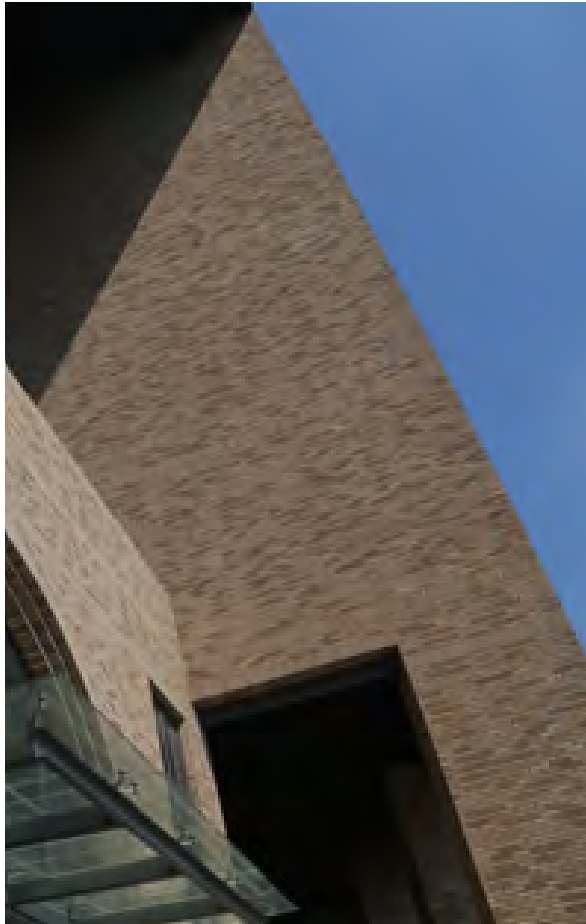
Year:2016
Product Used:A面劈开砖090
Amount of Products Used:9000㎡



Year:2017
Products Used: A面劈开砖090
Amount of Products Used:12000㎡



Year:2016
Product Used:A劈开砖031、北美布纹石、金灰洞031Y
Amount of Products Used:2000m²



Year:2014
Product Used:A面劈开砖326C4、洞石052056
Amount of Product Used:26000m²



Year:2014
Product Used:A面劈开砖031,038,043、毛面花岗岩31
Amount of Products Used:90000 m²



Year:2016
Product Used:板岩0328、平板砂岩050
Amount of Product Used:40000 m²



Year:2017
Product Used:A面劈开砖090
Amount of Products Used:8000m²



Year:2014
Product Used:A面劈开砖310,326,328
Amount of Product Used:100000m²



Year:2017
Product Used:A面劈开砖052
Amount of Products Used:9000m²



Year:2018
Product Used:斧开石056
Amount of Product Used:8000m²



Year: 2020
Product Used: A面劈开砖089W
Amount of Products Used: 70000m²



Year: 2020
Product Used: K面窑变砖308317
Amount of Product Used: 40000m²



Year: 2019
Product Used: A面劈开砖090
Amount of Products Used: 22000m²



Year: 2019
Product Used: A面劈开砖089C8
Amount of Product Used: 15000m²

Schools & Hospitals | Shandong Weihai Rushan No.2 Middle School



Year: 2018
Product Used: A面劈开砖052
Amount of Products Used: 8000m²

Schools & Hospitals | Shandong Weihai Rushan Baishata Junior High School



Year: 2018
Product Used: A面劈开砖326C4
Amount of Product Used: 10000m²



Year: 2019
Product Used: A面劈开砖308317
Amount of Products Used: 40000m²



Year: 2020
Product Used: A面劈开砖031,089
Amount of Product Used: 6000m²

Schools & Hospitals | Guangxi Laibin Wuxuan Middle School



Year:2019
Product Used:A面劈开砖087C4
Amount of Products Used:6000m²

Schools & Hospitals | Nanjing Jiangjunshan Junior High School



Year:2018
Product Used:铁力木
Amount of Product Used: 2000m²



Year:2020
Product Used:壁岩058
Amount of Products Used:5000m²



Year:2020
Product Used:G面窑变砖031042
Amount of Product Used:8000m²



Year:2018
Product Used:A面劈开砖085089
Amount of Products Used:3000m²



Year:2019
Product Used:A面劈开砖052
Amount of Product Used: 7000m²



Year: 2017
Product Used: A面劈开砖031,362
Amount of Products Used: 30000m²



Year: 2016
Product Used: A面劈开砖090
Amount of Product Used: 3000m²

Schools & Hospitals | Fujian Normal University Pingtan Affiliated Middle School



Year: 2015
Product Used: 壁岩050
Amount of Products Used: 14000m²

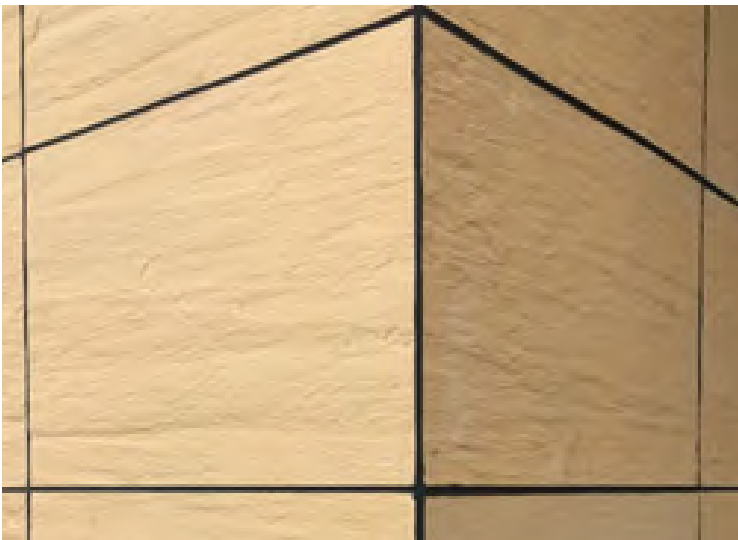
Schools & Hospitals | Fujian Changting No.1 Middle School



Year: 2017
Product Used: 劈开砖A面362
Amount of Product Used: 4000m²

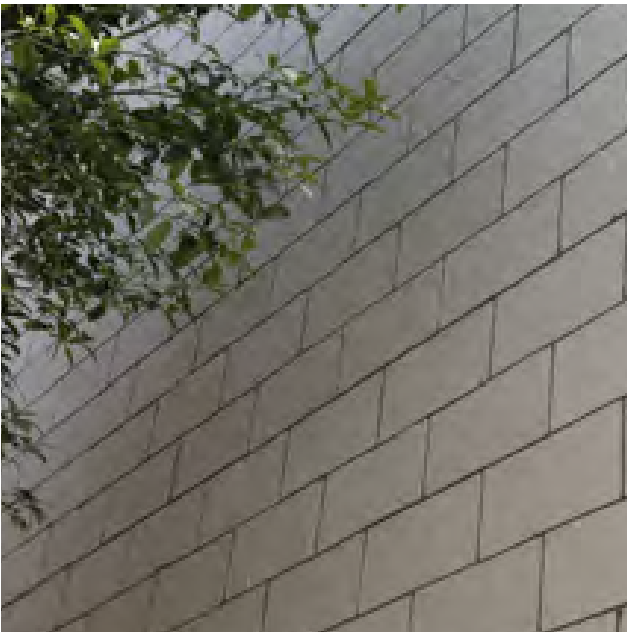


Year:2017
Product Used: A面劈开砖326C4
Amount of Products Used:6000m²



Year:2018
Product Used: 壁岩054
Amount of Product Used: 3000m²

Schools & Hospitals | Hubei Wuhan No.14 High School



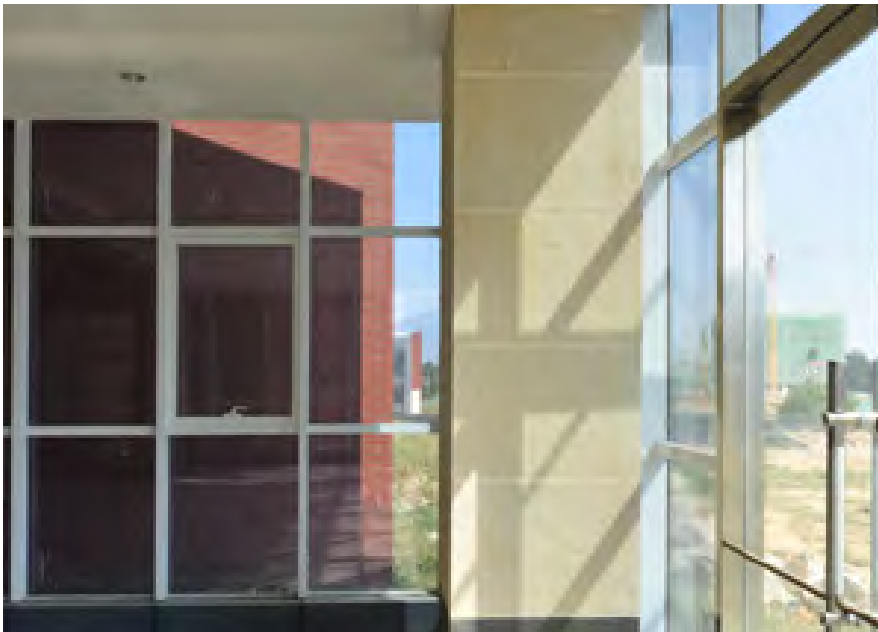
Year:2017
Product Used: 板岩052、檀黄木
Amount of Products Used: 5000m²

Schools & Hospitals | Xinjiang Aksu No.4 Middle School



Year:2016
Product Used: A面劈开砖326C4、050
Amount of Product Used:6000m²

Schools & Hospitals | Shandong Taian No.1 High School



Year: 2016
Product Used: 晴岚石、G面窑变砖03104
Amount of Products Used: 3500m²

Schools & Hospitals | Zhejiang Wuxi Yugang High School



Year: 2017
Product Used: 斧开石052
Amount of Product Used: 6000m²

Schools & Hospitals | Guangxi Liuzhou Senior High School-South



Year: 2016
Product Used: A劈开砖四色混搭
Amount of Products Used: 20000m²

Schools & Hospitals | Guangxi Nanning No.54 Middle Shcool



Year: 2017
Product Used: 晴岚石
Amount of Product Used: 5000m²

Schools & Hospitals | Guizhou Zunyi No.5 Middle School



Year: 2015
Product Used: A面劈开砖030,031,038
Amount of Products Used: 11000m²

Schools & Hospitals | Guizhou Zunyi No.20 Middle School



Year: 2016
Product Used: A面劈开砖031、板岩054
Amount of Product Used: 9500m²



Year:2016
Product Used:A面劈开砖090, 板岩052
Amount of Products Used:15600m²



Year:2020
Product Used:A面劈开砖090E
Amount of Product Used:20000m²



Year:2016
Product Used:A面劈开砖310,326,328
Amount of Products Used:2000m²



Year:2016
Product Used:劈开砖A面052,031
Amount of Product Used:2500m²

Schools & Hospitals | Tianjin Normal University Nankai Affiliated High School



Year: 2017
Product Used: A面劈开砖087C4
Amount of Products Used: 6000m²

Schools & Hospitals | Sichuan Yibin Renmin Road Primary School



Year: 2020
Product Used: 定制色板岩, 劈开砖031042, 劈开砖050
Amount of Product Used: 4000m²



Year:2016
Product Used:A面劈开砖085、090
Amount of Products Used:4400m²



Year:2021
Product Used:G面窑变砖085089、板岩043
Amount of Products Used:6000m²

Schools & Hospitals | Fujian Pingtan Lancheng Primary School



Year:2016
Product Used:A面劈开砖085、087
Amount of Products Used:8000m²

Schools & Hospitals | Fujian Pingtan Chengdong Primary School



Year:2019
Product Used:A面窑变砖085087
Amount of Products Used:4500m²

Schools & Hospitals | Fujian Fuzhou Cangshan No.8 Central Primary School



Year: 2015
Product Used: A面劈开砖038C4
Amount of Products Used: 4000m²

Schools & Hospitals | Fujian Pingtan Qilin Primary School



Year: 2016
Product Used: A面劈开砖308、310、090
Amount of Products Used: 6000m²

Schools & Hospitals | Fujian Fuzhou Hongtang Central Primary School



Year: 2016
Product Used: A劈开砖030、031、038
Amount of Products Used: 4000m²

Schools & Hospitals | Tianjin Nankai Central Elementary School



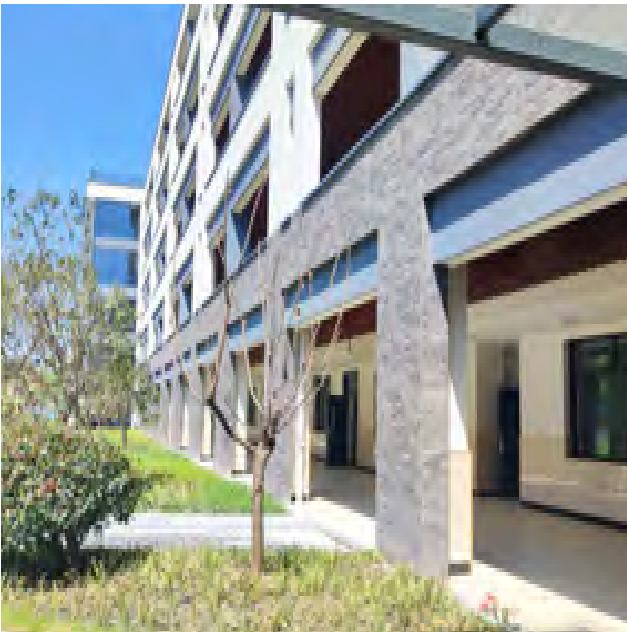
Year: 2016
Product Used: A面劈开砖326C4
Amount of Products Used: 3000m²



Year: 2016
Product Used: A劈开砖038
Amount of Products Used: 5000m²



Year: 2020
Product Used: 板岩052
Amount of Products Used: 4000m²



Year: 2020
Product Used: G面窑变砖031042
Amount of Products Used: 5000m²



Year: 2017
Product Used: A面劈开砖054、090
Amount of Products Used: 5500m²

Schools & Hospitals | Zhejiang Yiwu Zongze Primary School



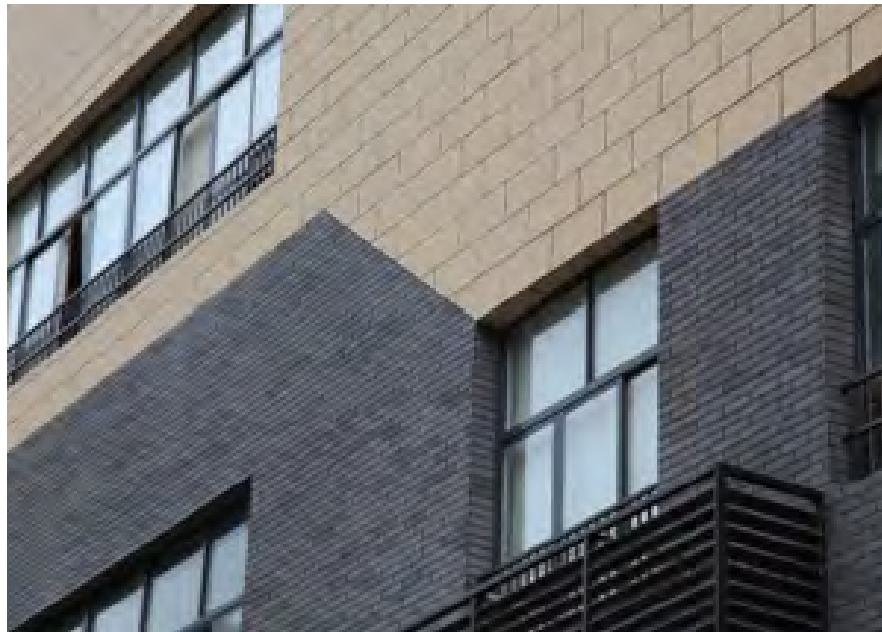
Year:2016
Product Used:A面劈开砖038C4
Amount of Products Used:2000m²

Schools & Hospitals | Zhejiang Yiwu Happiness Lake Primary School



Year:2017
Product Used:A面劈开砖054
Amount of Products Used:3800m²

Schools & Hospitals | Guiyang No.3 Bridge Elementary School



Schools & Hospitals | Qinghai Xining Wuyi Primary School



Year:2014
Product Used:A面劈开砖025,326C4,038C4、喜马拉雅板岩052、北美布纹石089
Amount of Products Used:50000m²

Year:2015
Product Used:A劈开砖089C4
Amount of Products Used:5000m²

Schools & Hospitals | Guizhou Zunyi Huichuan District No.1 Primary School



Year:2015
Product Used:A面劈开砖030、038
Amount of Products Used:15000m²

Schools & Hospitals | Guizhou Zunyi Huichuan District No.10 Primary School



Year:2014
Product Used:A面劈开砖030、038
Amount of Products Used:22000m²

Schools & Hospitals | Xinjiang Alashankou Aibi Lake bilingual Kindergarten



Year:2019
Product Used:A面劈开砖326C4
Amount of Products Used:4000㎡

Schools & Hospitals | Fujian Pingtan Suao Kindergarten



Year:201.
Product Used:A面窑变砖052056
Amount of Products Used:3000㎡

Schools & Hospitals | Guizhou Guiyang Huaguoyuan Kindergarten



Year: 2014
Product Used: A面劈开砖310,326,328
Amount of Products Used: 10000m²

Schools & Hospitals | Fujian Fuzhou Beilei Kindergarten



Year: 2017
Product Used: A面劈开砖326C4
Amount of Products Used: 6000m²



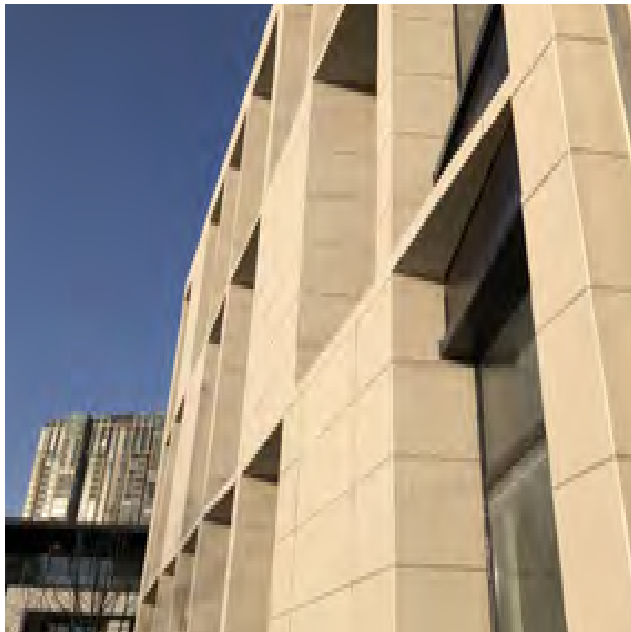
Year: 2016
Product Used: A面劈开砖362C4
Amount of Products Used: 8600m²



Year: 2021
Product Used: A面窑变砖318317
Amount of Products Used: 2000m²



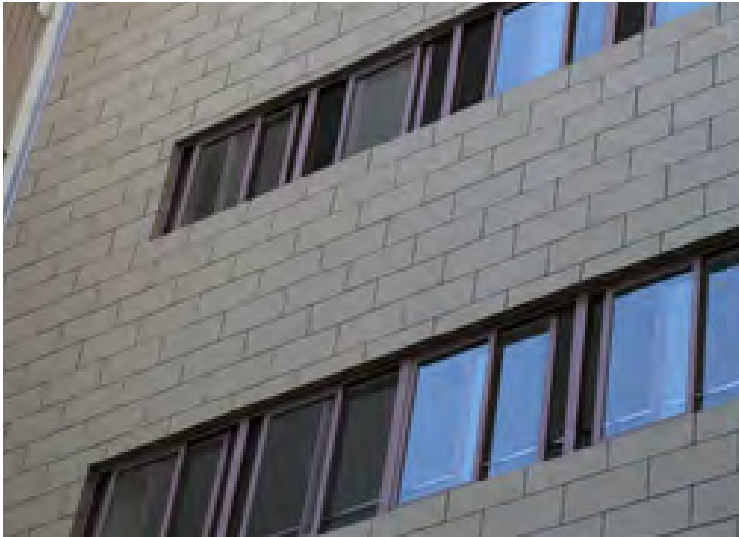
Year: 2020
Product Used: 板岩054
Amount of Products Used: 4000m²



Year: 2014
Product Used: 板岩085
Amount of Products Used: 2500m²



Year:2016
Product Used:晴岚石、火山板岩、鳄鱼皮
Amount of Products Used: 9000m²



Year:2017
Product Used:板岩0522
Amount of Products Used:3000m²

Schools & Hospitals | Guangdong Bobai People's Hospital



Year:2019
Product Used:板岩052、A面劈开砖038
Amount of Products Used: 8000m²

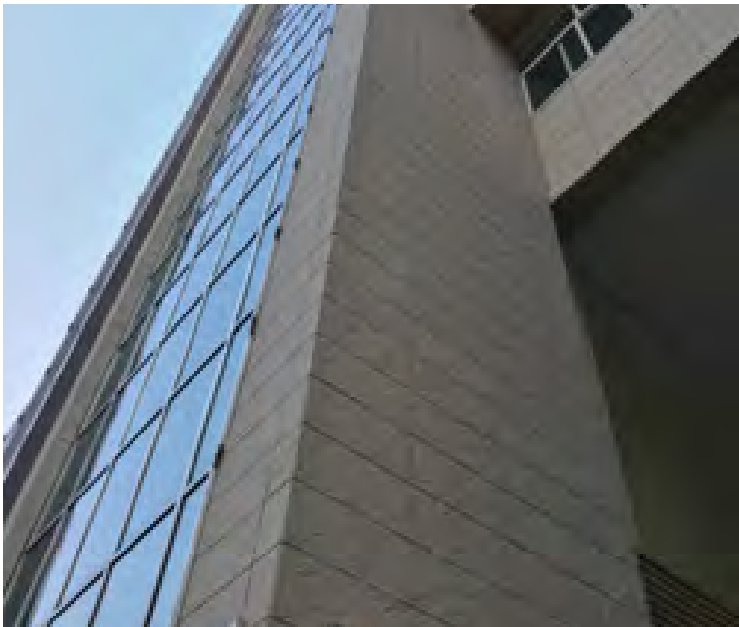
Schools & Hospitals | Fujian Pingtan Comprehensive Experimental Zone Hospital



Year:2017
Product Used:壁岩025
Amount of Products Used:3500m²



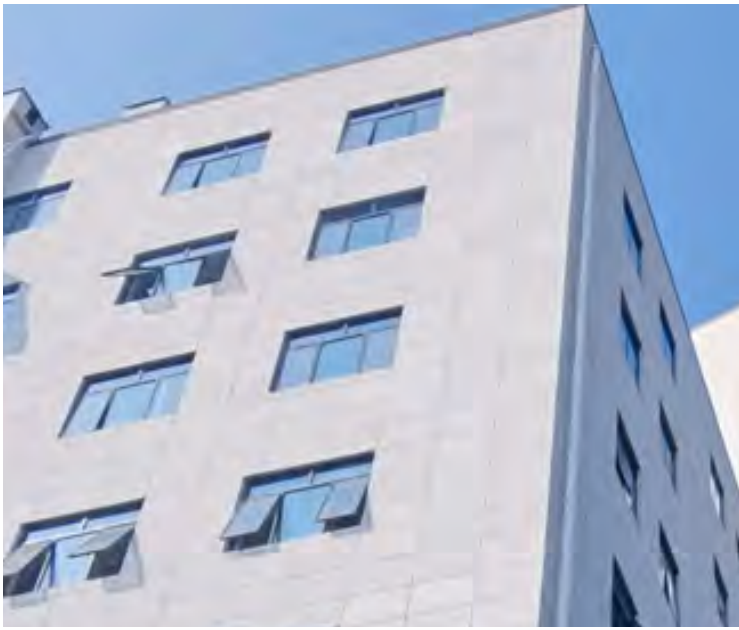
Year:2019
Product Used:板岩052、板岩054
Amount of Products Used: 4000m²



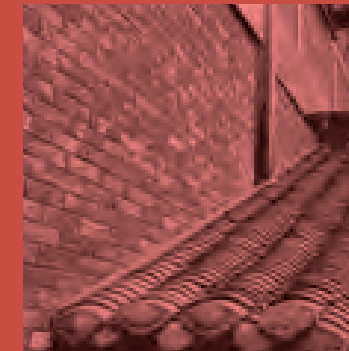
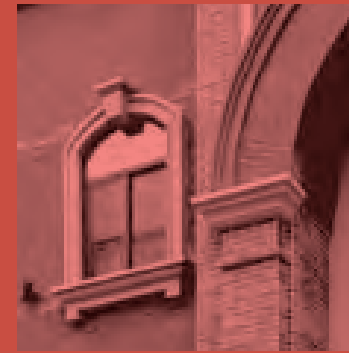
Year:2015
Product Used:板岩052、221
Amount of Products Used:6500m²



Year: 2020
Product Used: 板岩052, 228
Amount of Products Used: 4000m²



Year: 2020
Product Used: 壁岩052
Amount of Products Used: 4400m²



Urban Renewal

Urban Renewal | Sichuan Chengdu Qingyang District Commercial Areas Renewal next to Provincial Party Committee



Year:2018
Product Used:A面劈开砖038C4、052056
Amount of Products Used:12000m²

Urban Renewal | Sichuan Chengdu Urban Renewal of Street-Facing Facades in the Du Fu Thatched Cottage Area



Year:2020
Product Used:G面窑变砖031042
Amount of Products Used:30000m²

Urban Renewal | Streets in the Chengdu Sports Center Area, Sichuan

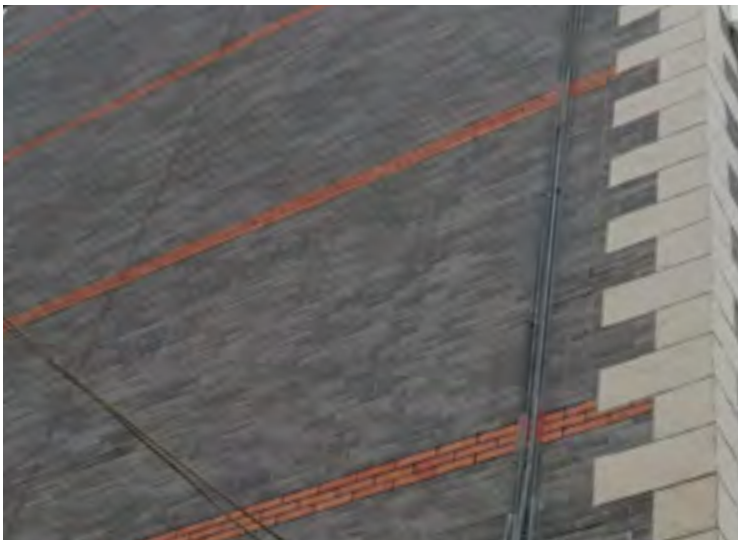


Year:2020
Product Used:A面劈开砖085089
Amount of Products Used:20000m²

Urban Renewal | Renewal of Sichuan Chengdu Hehuachi District



Year:2020
Product Used:A面劈开砖054
Amount of Products Used:15000m²



Year:2019
Product Used:A面窑变砖031042, 085089
Amount of Products Used:15000m²



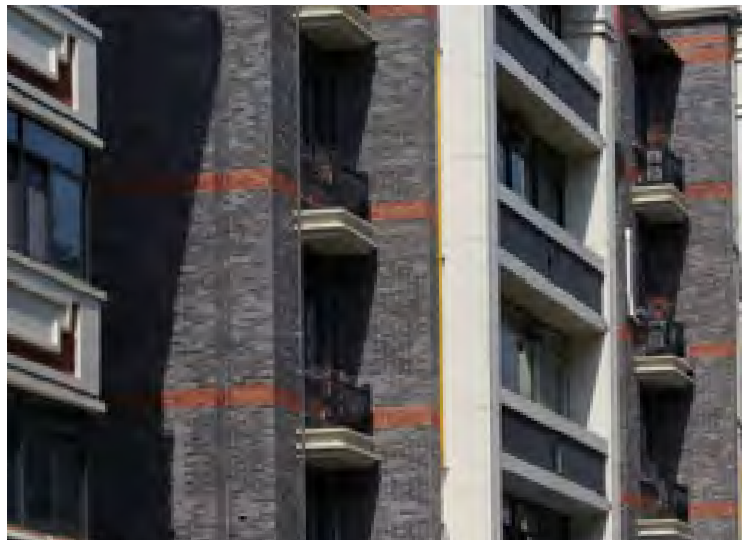
Year:2017
Product Used:若云石、洞石031YZD
Amount of Products Used:6000m²

Urban Renewal | Urban Renewal of Fuchuan County, Sichuan



Year:2019
Product Used:板岩054、板岩221
Amount of Products Used:50000m²

Urban Renewal | Guoyihui Traditional Chinese Medicine Culture and Tourism District, Chengdu,Sichuan



Year:2020
Product Used:G面窑变砖085089、031042
Amount of Products Used:20000m²



Year:2020
Product Used:A面劈开砖038C4、G面窑变砖031043、A面窑变砖308317
Amount of Products Used:40000m²



Year:2015
Product Used:A面劈开砖087C4
Amount of Products Used:2000m²



Year:2018
Product Used:G面窑变砖031042
Amount of Products Used:10000m²



Year:2016
Product Used:板岩052
Amount of Products Used:20000m²

Urban Renewal | Urban Renewal of Facade along Longchuan Road, Longyan, Fujian



Year:2017
Product Used:A面劈开砖038,050、凹凸砂岩054-A,328-3
Amount of Products Used:11080m²

Urban Renewal | BRICS Summit Urban Renewal in Xiamen, Fujian



Year:2017
Product Used:A面劈开砖、K面劈开砖、板岩等
Amount of Products Used:300000m²

Urban Renewal | Renewal of the Xindian Ancient Ruins in Fuzhou, Fujian



Year: 2021
Product Used: G面窑变砖031043
Amount of Products Used: 5000m²

Urban Renewal | Jinsha Red Town in Yongding, Longyan, Fujian



Year: 2021
Product Used: A面劈开砖043
Amount of Products Used: 15000m²

Urban Renewal | Exterior Renewal of the Lianjiang County Party Committee Office Building in Fuzhou, Fujian



Year:2021
Product Used:A面劈开砖090、085、3D云山板岩
Amount of Products Used:4000m²

Urban Renewal | Urban Renewal of Lintong Neighborhood, Xian, Shaanxi



Year:2020
Product Used:板岩050、A面劈开砖090
Amount of Products Used:300000m²



Year:2009
Product Used:A面劈开砖、板岩等
Amount of Products Used:20000m²



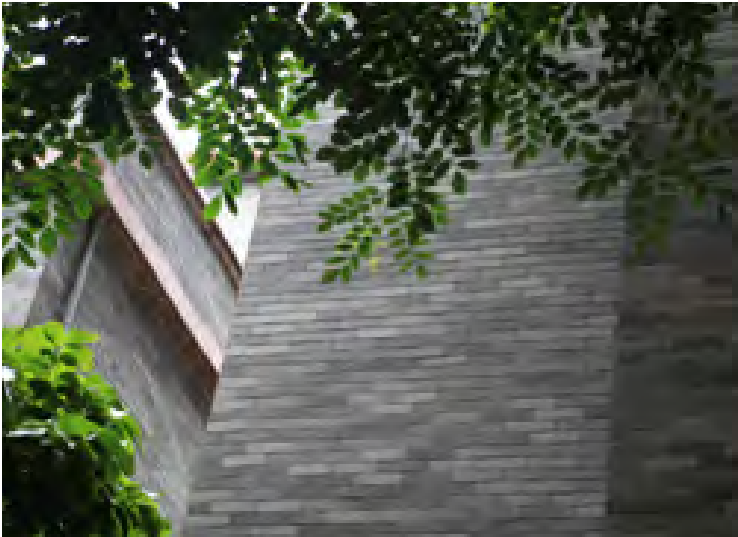
Year:2019
Product Used:A面窑变砖308317、038C4
Amount of Products Used:20000m²

Urban Renewal | Urban Renewal of Fenghuang Ancient Village in Shenzhen, Guangdong



Year:2014
Product Used:A面劈开砖030,043,038、G面劈开砖221,228,231
Amount of Products Used:40000m²

Urban Renewal | Urban Renewal of Gumei Road, Machong Town, Dongguan, Guangdong



Year:2014
Product Used:A面劈开砖030,038,043、G面劈开砖030,038,043
Amount of Products Used:50000m²

Urban Renewal | Urban Renewal of Lishui Town, Foshan, Guangdong



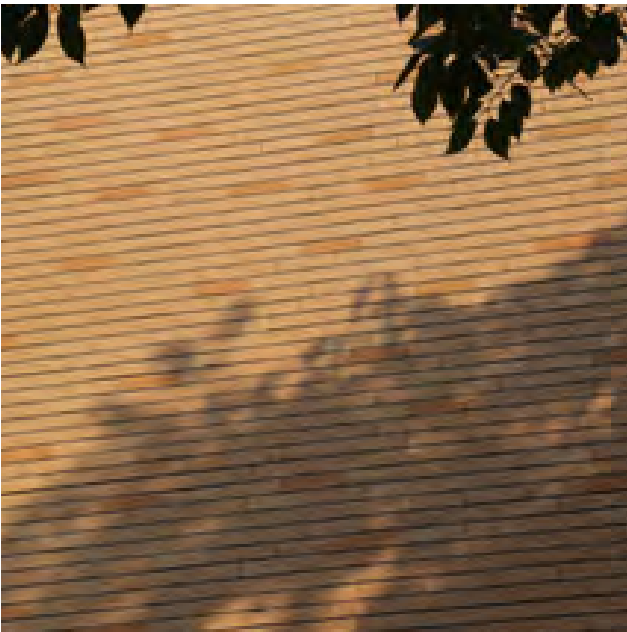
Year:2013
Product Used:喜马拉雅板岩050C,038C,326CN, 洞石054CN
Amount of Products Used:1954m²

Urban Renewal | Urban Renewal of Luo Village, Shishan Town, Foshan, Guangdong



Year:2020
Product Used:G面窑变砖031042
Amount of Products Used:4500m²

Urban Renewal | Urban Renewal of Zheda Road for the G20 Hangzhou Summit,Zhejiang



Year:2016
Product Used: 洞石、K面劈开砖、毛面花岗岩、条石
Amount of Products Used:100000m²

Urban Renewal | Urban Renewal on Tangjiaqiao Road and Yandang West Road, Wenzhou, Zhejiang



Year:2016
Product Used:K劈开砖087C4
Amount of Products Used:5000m²



Year: 2016
Product Used: K劈开砖090、085、087
Amount of Products Used: 21500m²



Year: 2017
Product Used: A面劈开砖031,038,043
Amount of Products Used: 10000m²

Urban Renewal | Urban Renewal of Guilin, Guangxi



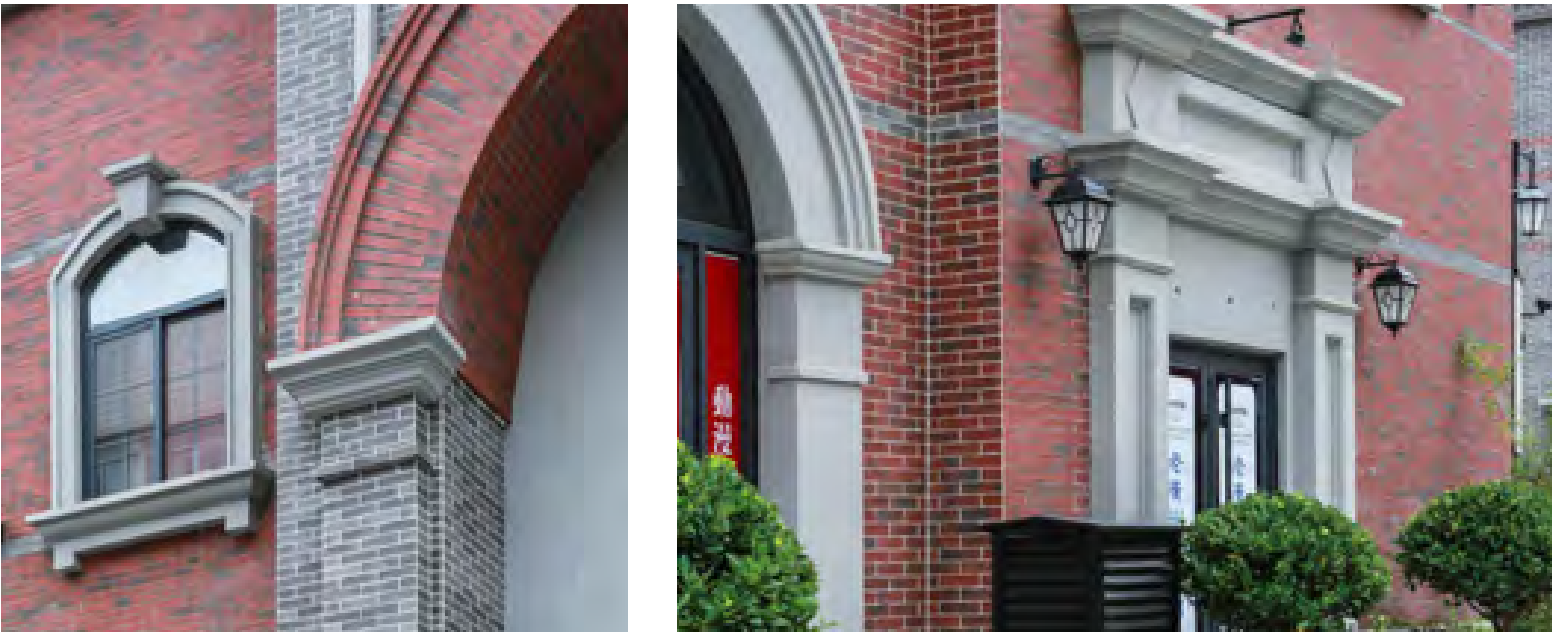
Year:2017
Product Used:G面劈开砖031043,030038、平板板岩058 C,087 D
Amount of Products Used:6000m²

Urban Renewal | Urban Renewal of Liuzhou, Guangxi



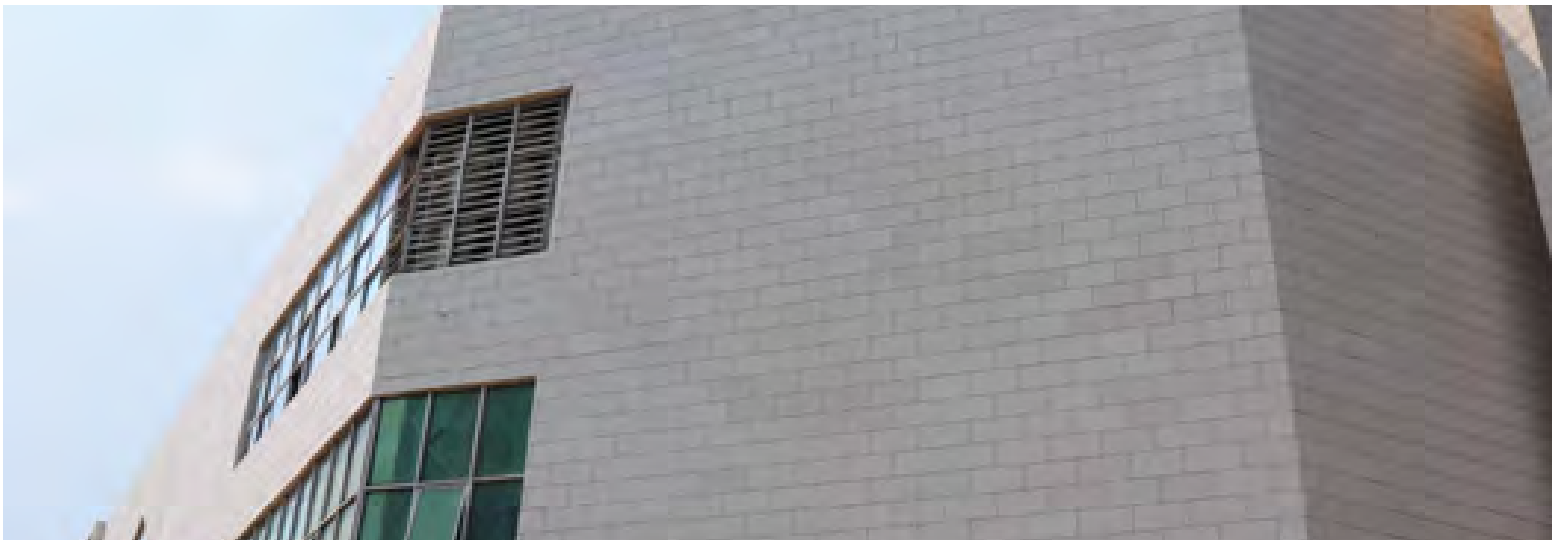
Year:2017
Product Used:A面劈开砖031,038,043、腊木310328
Amount of Products Used:50000m²

Urban Renewal | Urban Renewal of Guangzhou Pedestrian Street in Luoyang, Henan

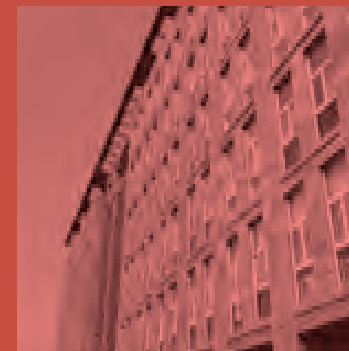
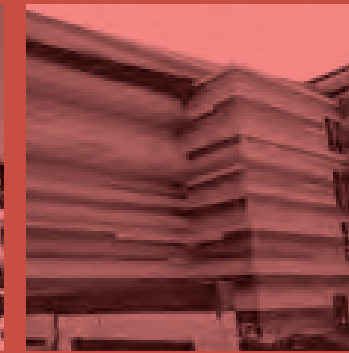


Year:2019
Product Used:G面窑变砖308317
Amount of Products Used:6000㎡

Urban Renewal | Urban Renewal of Haikou, Hainan

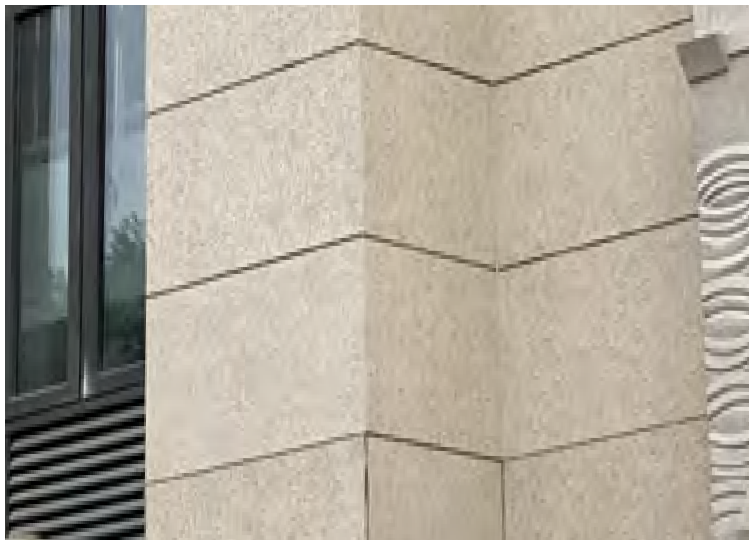


Year:2017
Product Used:板岩052
Amount of Products Used:30000㎡



Public Buildings

Public Buildings | Longyan Science & Technology Museum, Fujian



Year: 2021
Product Used: 3D白麻岩
Amount of Products Used: 7000m²

Public Buildings | Xian North Railway Station, Shaanxi



Year: 2021
Product Used: 3D秀石
Amount of Products Used: 1500m²

Public Buildings | Luoyang Metro Line 1, Henan



Year: 2021
Product Used: 壁岩050
Amount of Products Used: 5000m²

Public Buildings | Longyan Yongding Fire Station, Fujian



Year: 2021
Product Used: 壁岩054
Amount of Products Used: 6000m²

Public Buildings | Pingtan Environmental Monitoring Station, Fujian



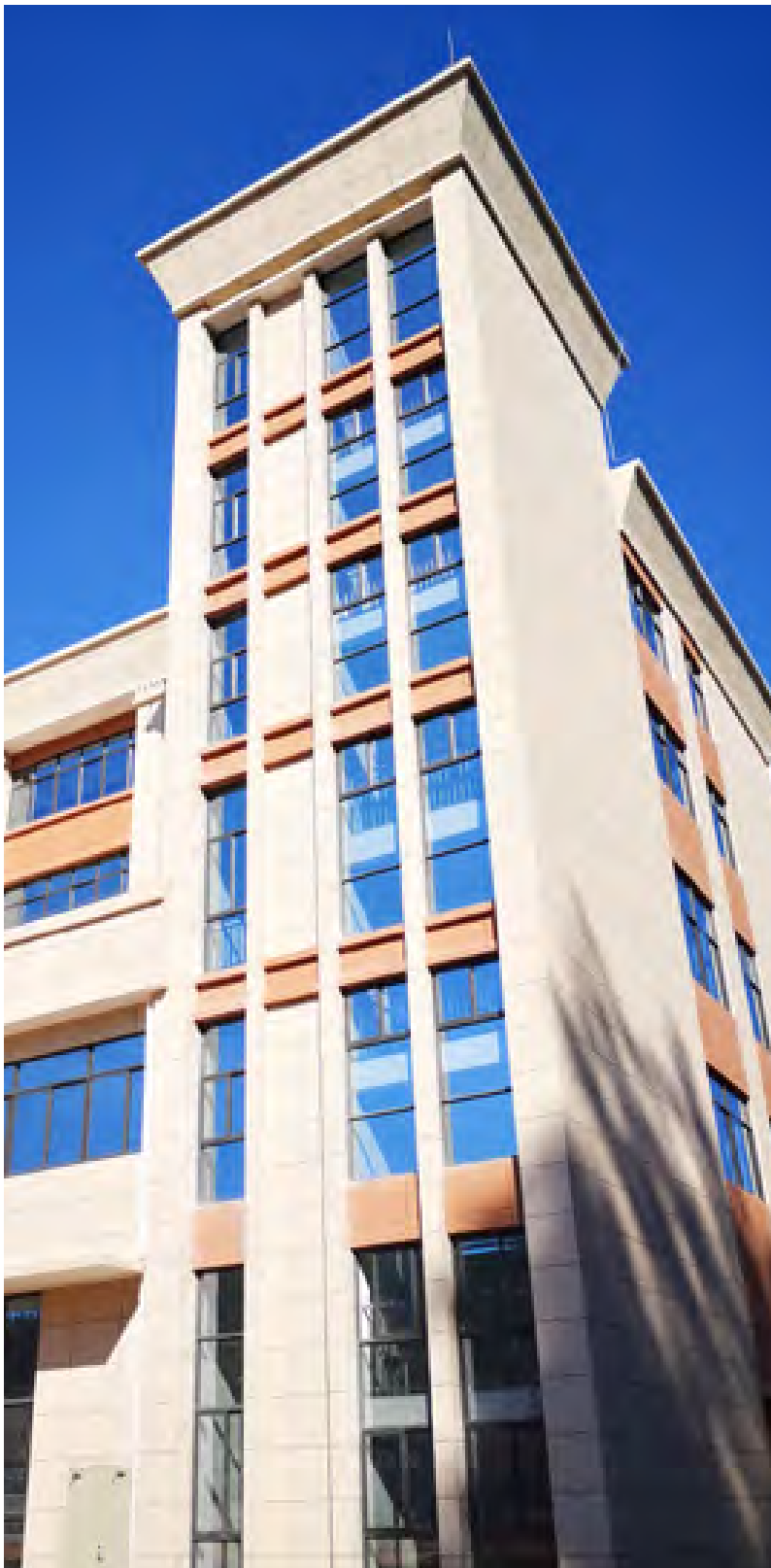
Year: 2019
Product Used: 黛烟石
Amount of Products Used: 8000m²

Public Buildings | Pingtan Guode Senior Kangyang Center, Fujian



Year: 2018
Product Used: A面劈开砖087
Amount of Products Used: 12000m²

Public Buildings | Longyan Fire Station, Fujian



Year:2020
Product Used:板岩052、087
Amount of Products Used:3500m²

Public Buildings | Fuzhou Farmers' Market, Fujian



Year:2020
Product Used:A面窑变砖085089
Amount of Products Used:3000m²



Year:2020
Product Used:G面窑变砖031042
Amount of Products Used:7000m²



Year:2020
Product Used:G面窑变砖085089
Amount of Products Used:8000m²

Public Buildings | Zhangzhou Zhaoan People's Government, Fujian



Year:2020
Product Used:板岩052
Amount of Products Used:16000m²

Public Buildings | Rushan Environmental Protection Bureau, Weihai, Shandong



Year:2019
Product Used:G面窑变砖085089
Amount of Products Used:8000m²

Public Buildings | Faculty and staff Housing, Weihai, Shandong



Year: 2019
Product Used: 板岩054
Amount of Products Used: 9100m²

Public Buildings | Weihai Innovation and Entrepreneurship Office Building, Shandong



Year: 2019
Product Used: 板岩052
Amount of Products Used: 14000m²

Public Buildings | Xianyou Food Plaza, Fujian



Year:2019
Product Used:A面窑变砖085089
Amount of Products Used:18000m²

Public Buildings | Xuzhou Administrative Office Building, Jiangsu



Year:2019
Product Used:壁岩烟山石
Amount of Products Used:8800m²

Public Buildings | Yongding Sports Center, Longyan, Fujian



Year: 2018
Product Used: 板岩056
Amount of Products Used: 8000m²

Public Buildings | Chinese Academy of Sciences Space Sciences and Application Research Center



Year: 2018
Product Used: 板岩221
Amount of Products Used: 7000m²

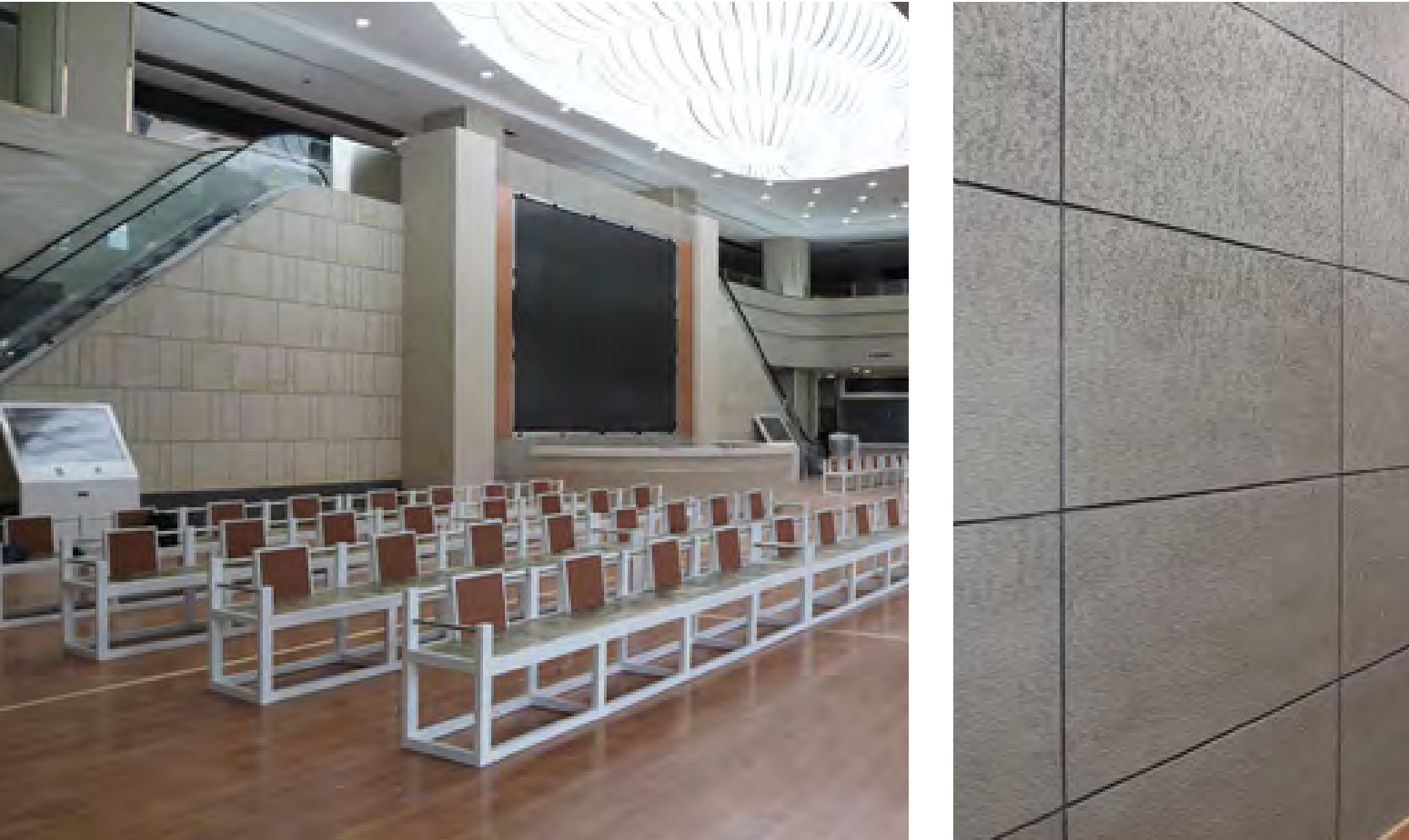


Year:2018
Product Used:A面劈开砖326C4, 白金洞石, 劈面蘑菇石
Amount of Products Used:23000m²



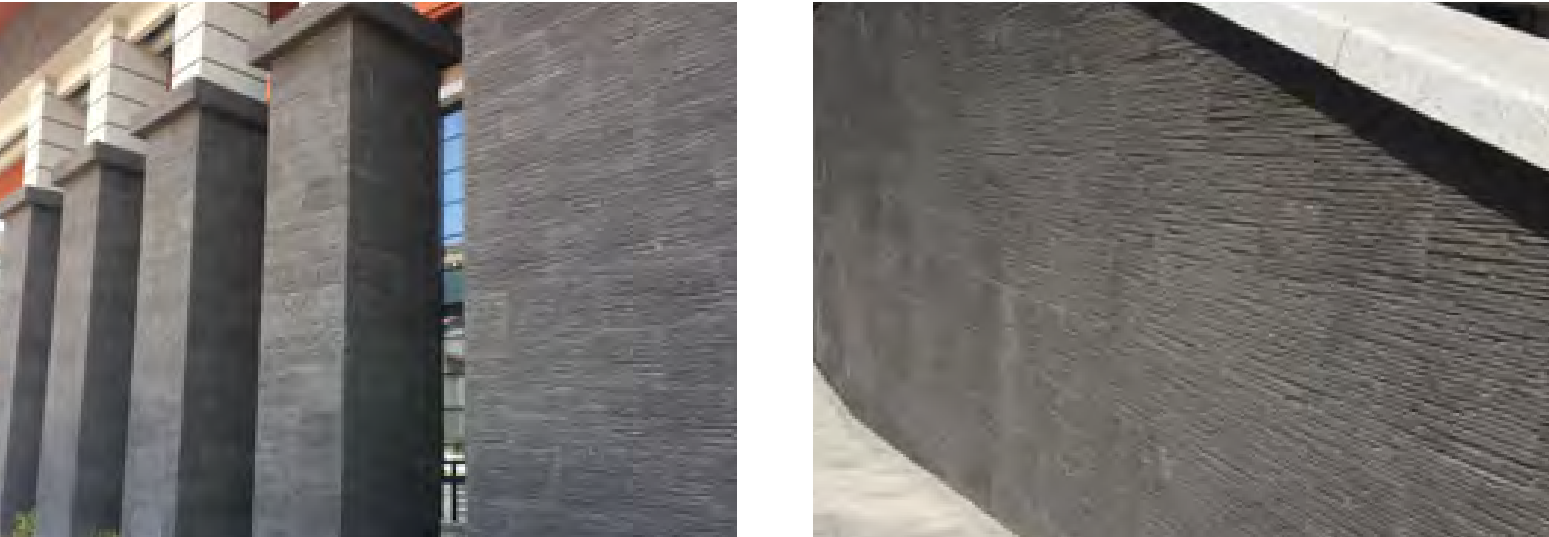
Year:2018
Product Used:A面劈开砖089、板岩221
Amount of Products Used:14300m²

Public Buildings | Gansu Tianshui People's Government Government Affairs Hall.



Year:2018
Product Used:北美布纹石、条石、金光青石、洞石
Amount of Products Used:22000m²

Public Buildings | Shaanxi Xian University of Architecture and Technology Caotang Campus Library



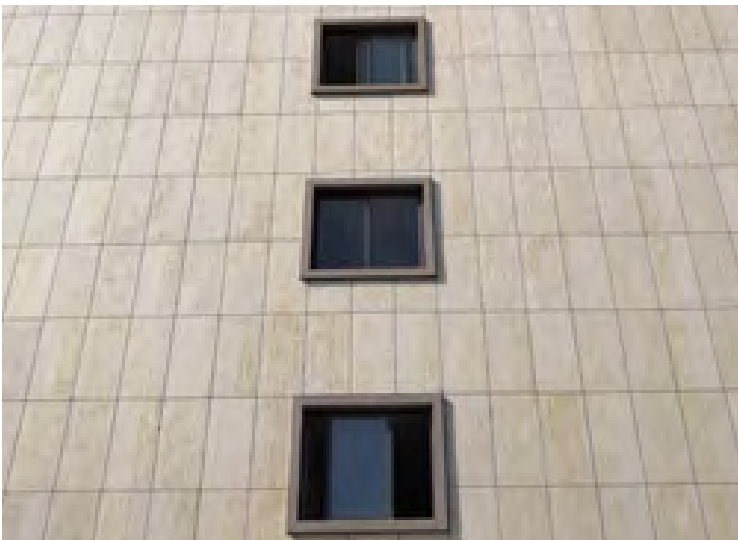
Year:2018
Product Used:南岛岁月痕038
Amount of Products Used:4000m²

Public Buildings | Luonan Cultural Center, Shangluo, Shaanxi



Year:2017
Product Used: 板岩052
Amount of Products Used:8900m²

Public Buildings | Qinzhou Port Authority Building, Guangxi



Year:2016
Product Used:A面劈开砖326C4、白金洞石、蘑菇石
Amount of Products Used:12000m²

Public Buildings | Jinlin Temple, Jiexi, Guangdong



Year:2017
Product Used:A面劈开砖031043
Amount of Products Used:3500m²

Public Buildings | Zhangjiakou Civil Affairs Bureau, Hebei



Year:2017
Product Used:A面劈开砖089
Amount of Products Used:4000m²

Public Buildings | Fuzhou South Railway Station, Fujian



Year:2017
Product Used:平板砂岩052、斧开石052
Amount of Products Used:2000m²

Public Buildings | Longyan Customs, Fujian



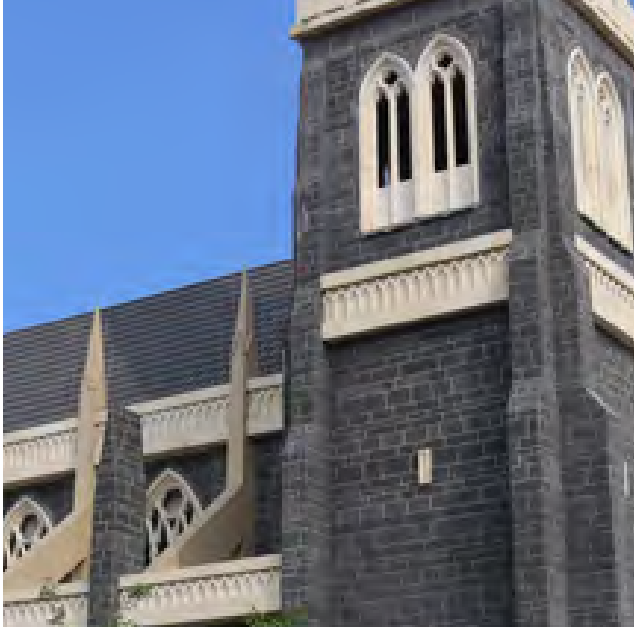
Year:2017
Product Used:板岩054
Amount of Products Used:4500m²

Public Buildings | Qiannan Reservoir Management Division, Guizhou



Year:2017
Product Used:板岩052、劈面蘑菇石
Amount of Products Used:4000m²

Public Buildings | Tianze Outlet Era Hall, Fuzhou, Fujian



Year:2017
Product Used:斧开石043
Amount of Products Used:6000m²

Public Buildings | Longyan Petition Bureau, Fujian



Year:2013
Product Used:3D白麻
Amount of Products Used:2000m²

Public Buildings | Nanping Veteran Cadre Activities Centre, Fujian



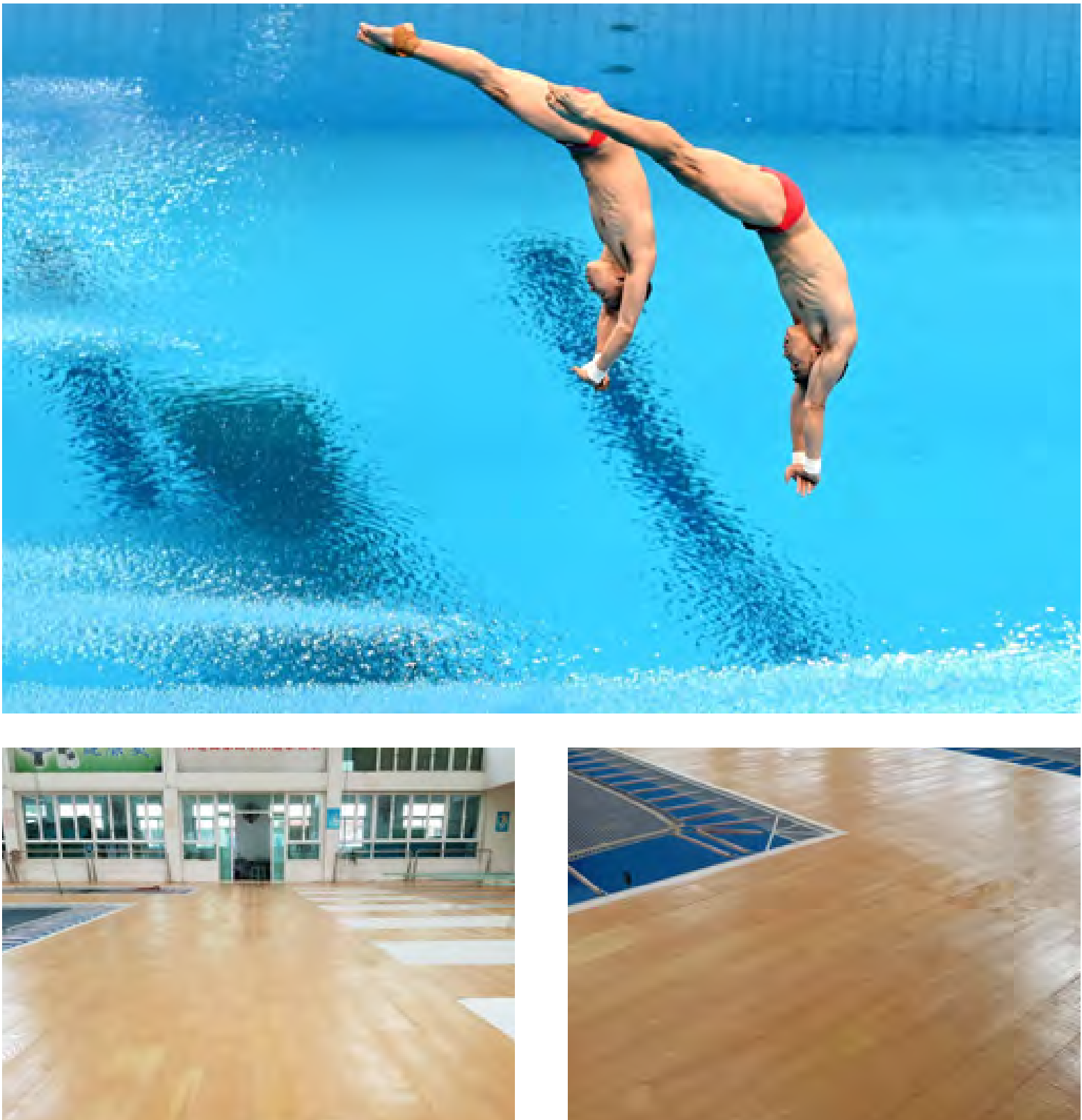
Year:2016
Product Used:板岩054
Amount of Products Used:3000m²

Public Buildings | Shantou CPC Political and Legal Building, Guangdong



Year:2017
Product Used:板岩221、052
Amount of Products Used:5000㎡

Public Buildings | National Diving Team Training Base, Shantou



Year:2014
Product Used:檀黄木
Amount of Products Used:1000㎡

Public Buildings | Zhongyi Science and Technology Innovation Building, Shantou, Guangdong



Year:2017
Product Used:板岩221、052
Amount of Products Used:4000m²

Public Buildings | Fujian Nanping Industrial Park



Year:2016
Product Used:A面劈开砖031、038
Amount of Products Used:3400m²

Public Buildings | Nanping Nanwu Gymnasium, Fujian



Year:2016
Product Used:板岩056
Amount of Products Used:2000m²

Public Buildings | Huadu Fire Brigade, Guangzhou, Guangdong



Year:2016
Product Used:檀香木、平板砂岩052
Amount of Products Used:1666m²

Public Buildings | Shaanxi Province Corporation Bldg.



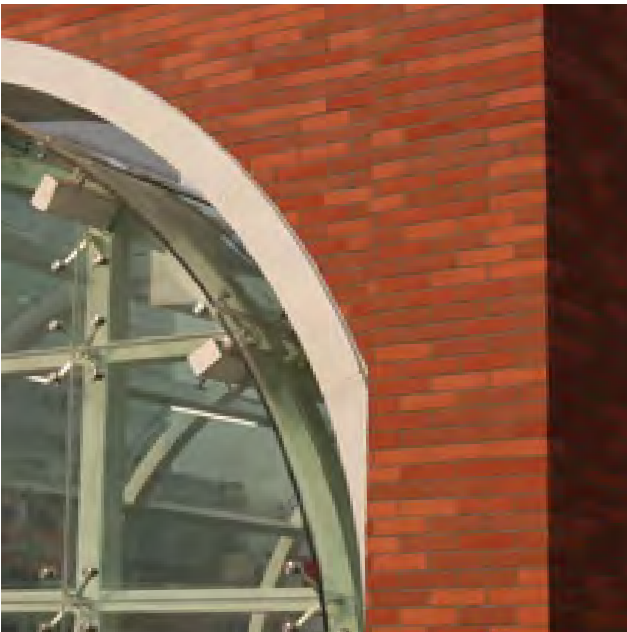
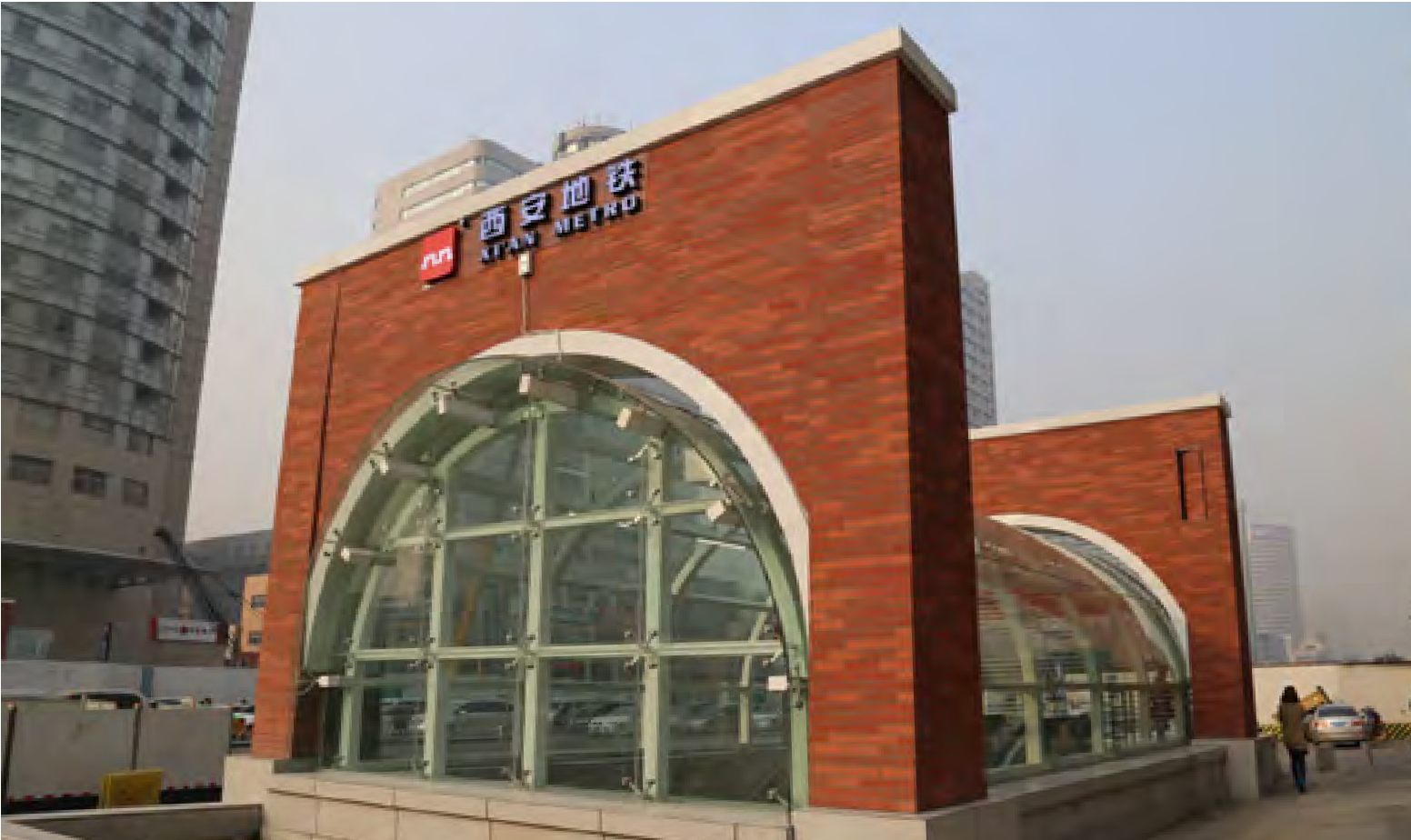
Year:2016
Product Used:板岩052, 038
Amount of Products Used:4200m²

Public Buildings | Cangpingshan Tunnel, Yaan, Sichuan



Year:2020
Product Used:板岩052, 038
Amount of Products Used:2000m²

Public Buildings | Xian Metro Line 3, Shaanxi



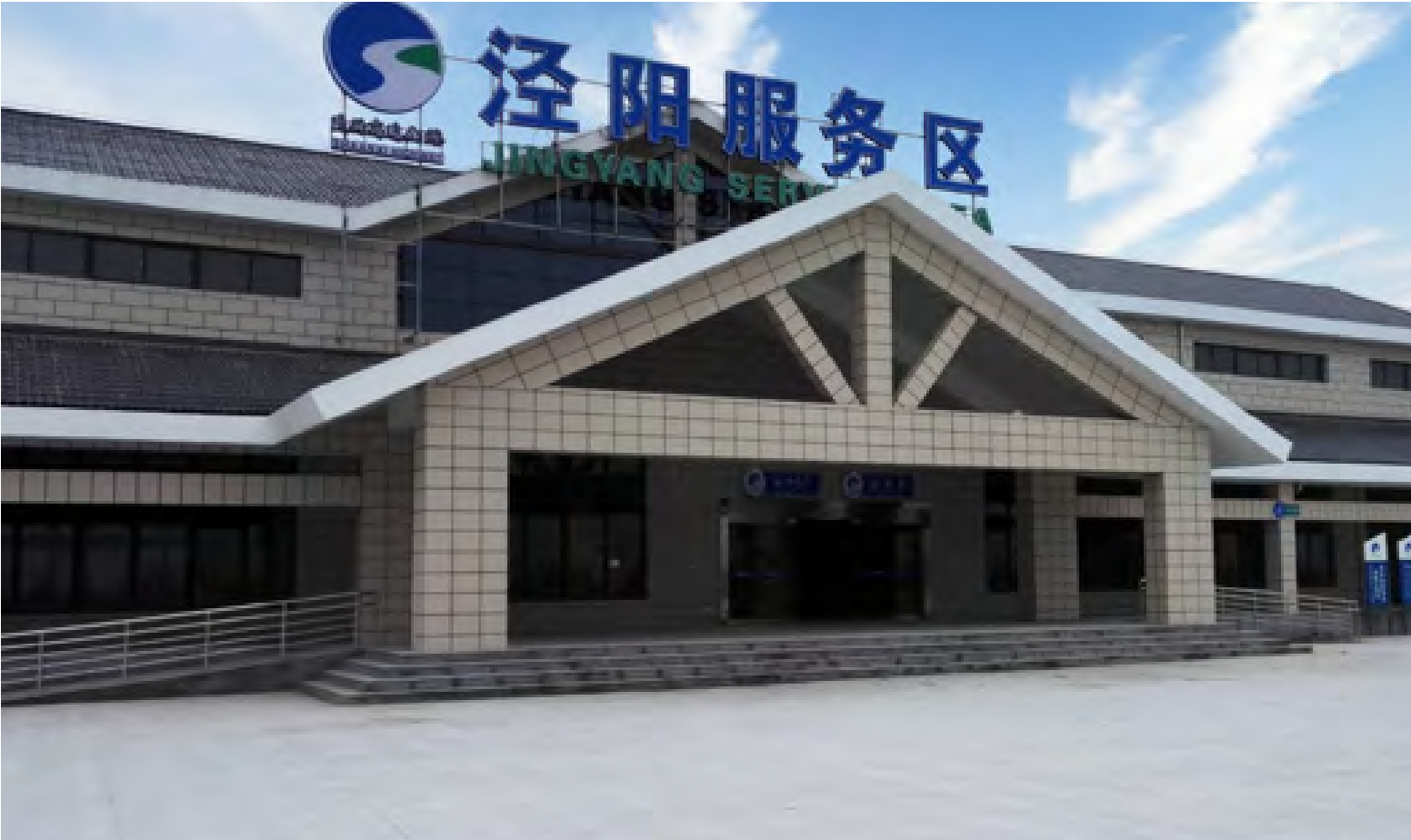
Year:2016
Product Used:A面劈开砖326C4
Amount of Products Used:2000m²

Public Buildings | Colorful Guizhou Cultural Creative park, Guiyang, Guizhou



Year:2016
Product Used:条石混搭、原始木、洞石、板岩
Amount of Products Used:20000m²

Public Buildings | Jingyang Freeway Service Area, Shaanxi



Year:2015
Product Used:板岩052
Amount of Products Used:3000m²

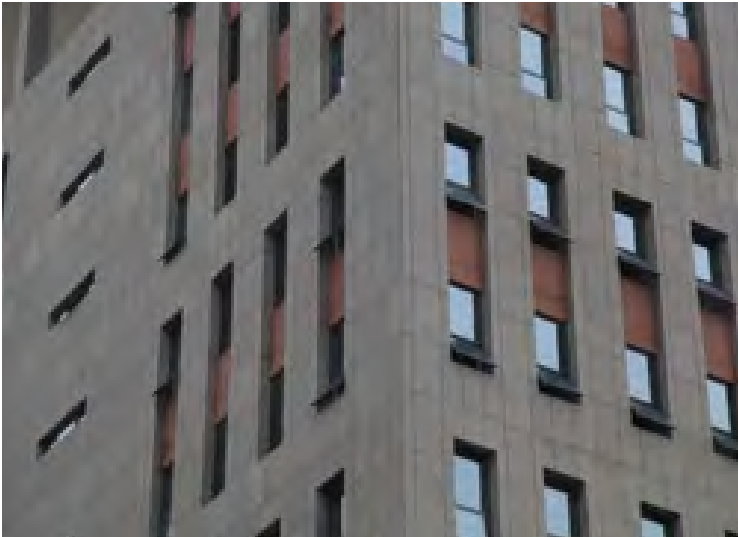
Public Buildings | Guangxi Laibin Government Overseas Chinese Entrepreneurship Building



Year:2015
Product Used:平板砂岩052、蘑菇石221
Amount of Products Used:9000m²

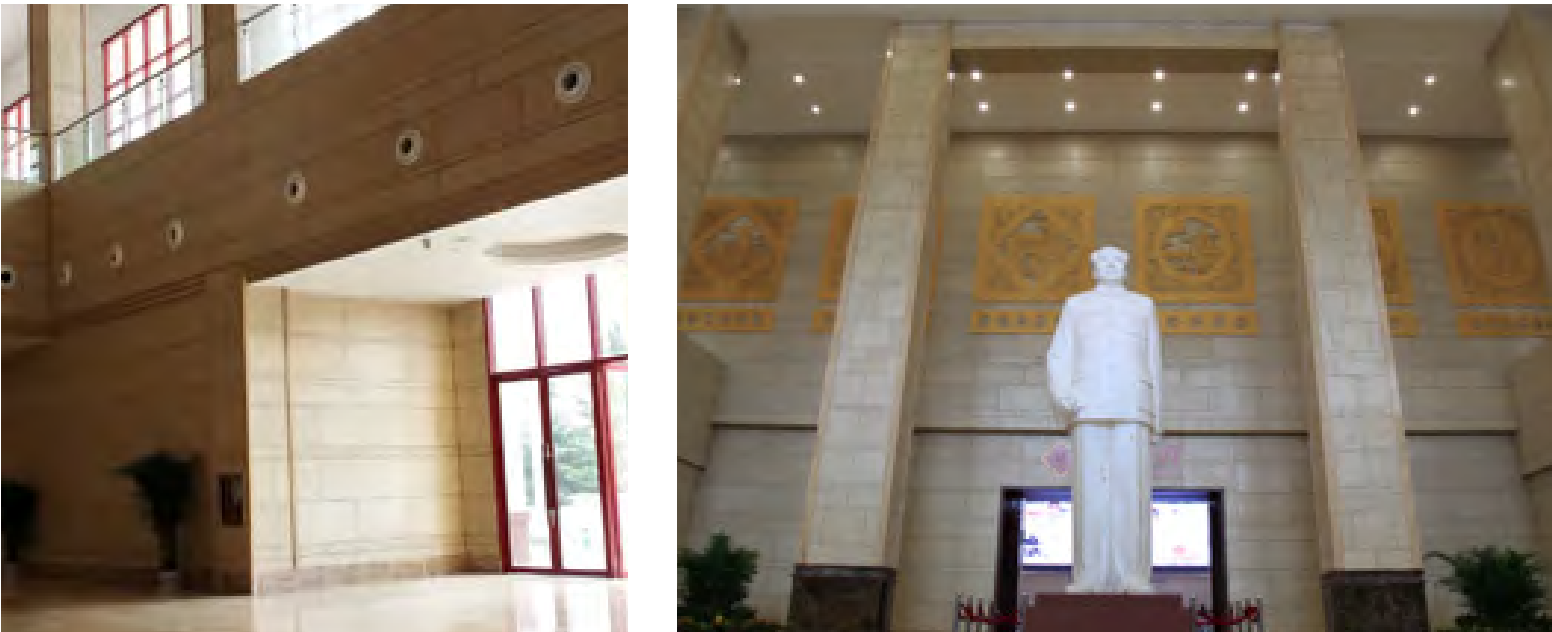


Year:2014
Product Used:板岩052
Amount of Products Used:2000m²



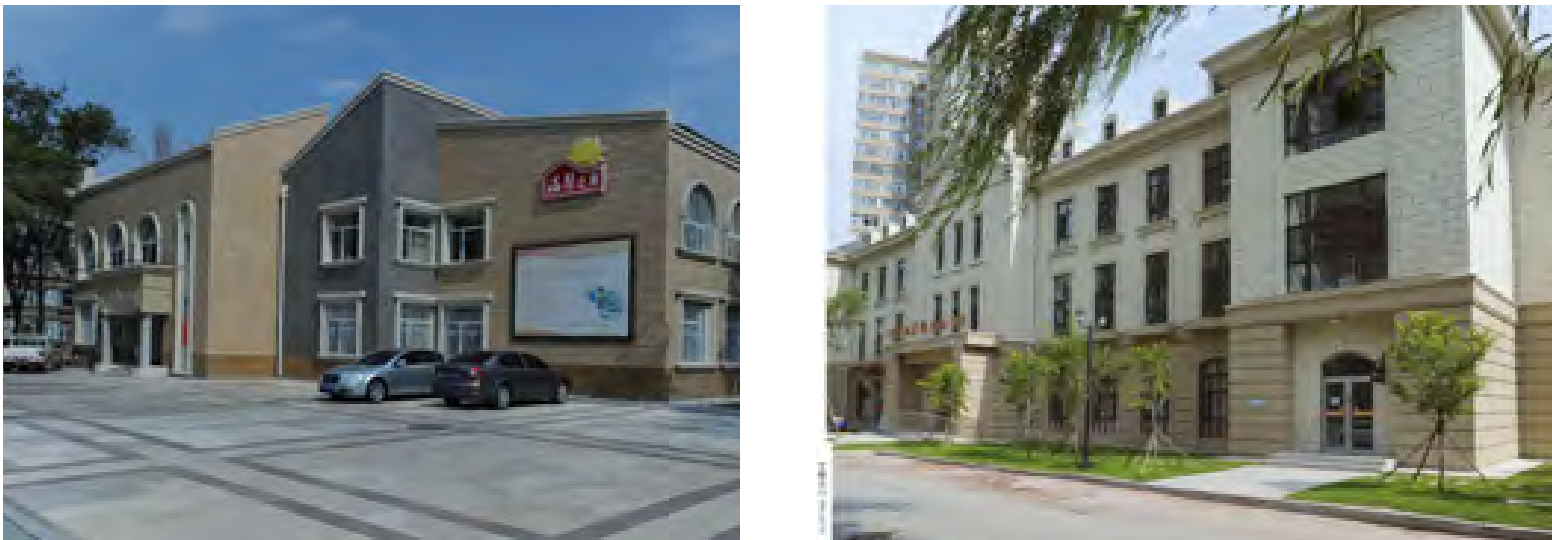
Year:2014
Product Used:平板砂岩030, 326
Amount of Products Used:47766m²

Public Buildings | Guiyang Public Resource Exchange Center, Guizhou



Year:2014
Product Used:洞石052
Amount of Products Used:14000m²

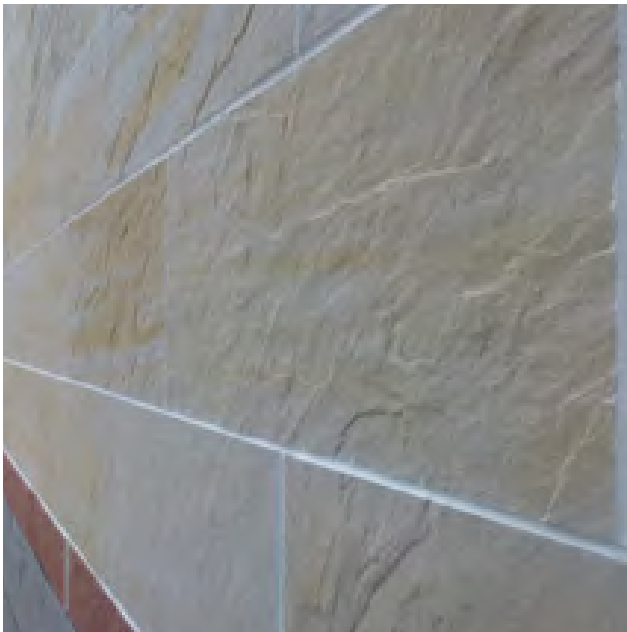
Public Buildings | Heilongjiang Daqing Oil Field



Year:2013
Product Used:板岩052、板岩054
Amount of Products Used:8000m²



Year:2015
Product Used:板岩052、斧开石、南岛岁月痕
Amount of Products Used:50000m²



Year:2012
Product Used:晴岚石、板岩031,089
Amount of Products Used:1147m²

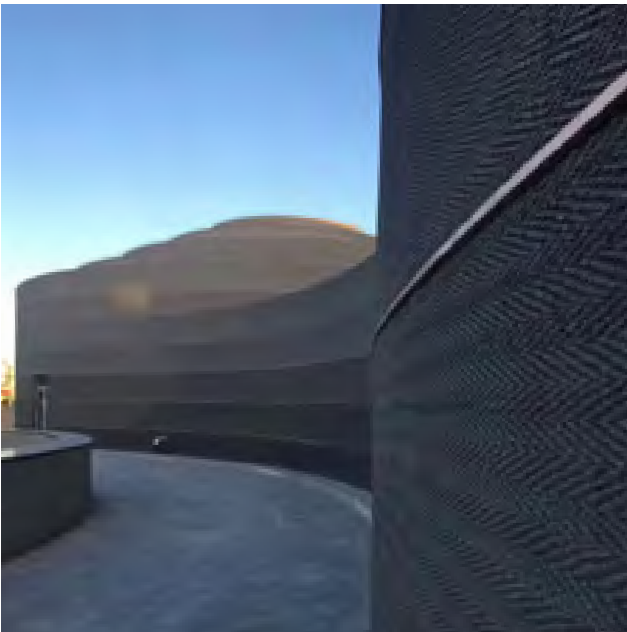


Year:2018
Product Used:脉络洞石、白金洞石、麻编、北美布纹石
Amount of Products Used:2000m²



Year:2018
Product Used: 定制版浮雕艺术品
Amount of Products Used:4000m²

Public Buildings | Inner Mongolia Duolun Museum



Year: 2018
Product Used: 麻编
Amount of Products Used: 15000m²

Public Buildings | Fujian Hanjisi Cold Chain Hub and International Ecommerce Project



Year: 2021
Product Used: 壁岩052、031、038
Amount of Products Used: 40000m²



Year: 2019
Product Used: G面劈开砖031,042
Amount of Products Used: 10000m²



Year: 2020
Product Used: 优邸木韵A、祥云朵、藤韵C、绳韵B
Amount of Products Used: 2000m²



**B e a u t i f u l
C o u n t r y s i d e**

Beautiful Countryside | Sichuan Chengdu Country Villa



Year:2018
Product Used:晴岚石
Amount of Products Used:400m²

Beautiful Countryside | Fujian Fuzhou Country Villa



Year:2015
Product Used:徽山石
Amount of Products Used:500m²

Beautiful Countryside | Guangxi Laibin New Rural Village Residential House



Year: 2019
Product Used: A面劈开砖038C4
Amount of Products Used: 450m²

Beautiful Countryside | Guangxi Yulin New Rural Village Residential House



Year: 2018
Product Used: 晴岚石、A面劈开砖
Amount of Products Used: 550m²

Beautiful Countryside | Guangdong Jieyang New Rural Village Residential House



Year:2020
Product Used:晴岚石、斧开石369
Amount of Products Used:500m²

Beautiful Countryside | Guangxi Yulin New Rural Village Residential House



Year:2020
Product Used:晴岚石
Amount of Products Used:300m²



Year: 2019
Product Used: 板岩052
Amount of Products Used: 350m²



Year: 2020
Product Used: A面劈开砖031
Amount of Products Used: 400m²

Beautiful Countryside | Guangxi Laibin New Rural Village Residential House



Year: 2020
Product Used: A面劈开砖090
Amount of Products Used: 400m²

Beautiful Countryside | Guangxi Guilin New Rural Village Residential House



Year: 2020
Product Used: A面劈开砖038C6
Amount of Products Used: 430m²

Beautiful Countryside | Guangxi Guilin New Rural Village Residential House



Year: 2020
Product Used: A面劈开砖089C6
Amount of Products Used: 400m²

Beautiful Countryside | Guangxi Laibin New Rural Village Residential House



Year: 2020
Product Used: 晴岚石
Amount of Products Used: 500m²

Beautiful Countryside | Guangxi Laibin New Rural Village Residential House



Year:2020
Product Used:A面劈开砖090、毛面花岗岩038
Amount of Products Used:490m²

Beautiful Countryside | Guangxi Laibin New Rural Village Residential House



Year:2019
Product Used:A面劈开砖090、晴岚石
Amount of Products Used:450m²



Year:2020
Product Used:A面劈开砖038C4 Amount of
Products Used:2000m²



Year:2017
Product Used:A面劈开砖038C4
Amount of Products Used:1500m²