

Forsyth MS4 Annual Facility Inspection Report

April 1, 2020 – March 31, 2021



Prepared by: Chastain & Associates LLC
5 N. Country Club Road | Decatur, IL 62521
P: 217.422.8544 | F: 217.422.0398





Illinois Environmental Protection Agency

Bureau of Water • 1021 N. Grand Avenue E. • P.O. Box 19276 • Springfield • Illinois • 62794-9276

Division of Water Pollution Control ANNUAL FACILITY INSPECTION REPORT

for NPDES Permit for Storm Water Discharges from Separate Storm Sewer Systems (MS4)

This fillable form may be completed online, a copy saved locally, printed and signed before it is submitted to the Compliance Assurance Section at the above address. Complete each section of this report.

Report Period: From March, 2020 To March, 2021

Permit No. ILR40 0193

MS4 OPERATOR INFORMATION: (As it appears on the current permit)

Name: Village of Forsyth Mailing Address 1: 301 South US 51

Mailing Address 2: _____ County: Macon

City: Forsyth State: IL Zip: 62535 Telephone: (217) 877-9445

Contact Person: David Strohl Email Address: dstrohl@forsyth-il.gov
(Person responsible for Annual Report)

Name(s) of governmental entity(ies) in which MS4 is located: (As it appears on the current permit)

Macon County

THE FOLLOWING ITEMS MUST BE ADDRESSED.

A. Changes to best management practices (check appropriate BMP change(s) and attach information regarding change(s) to BMP and measurable goals.)

- | | | | |
|----------------------------------------------|--------------------------|-------------------------------------------|--------------------------|
| 1. Public Education and Outreach | <input type="checkbox"/> | 4. Construction Site Runoff Control | <input type="checkbox"/> |
| 2. Public Participation/Involvement | <input type="checkbox"/> | 5. Post-Construction Runoff Control | <input type="checkbox"/> |
| 3. Illicit Discharge Detection & Elimination | <input type="checkbox"/> | 6. Pollution Prevention/Good Housekeeping | <input type="checkbox"/> |

B. Attach the status of compliance with permit conditions, an assessment of the appropriateness of your identified best management practices and progress towards achieving the statutory goal of reducing the discharge of pollutants to the MEP, and your identified measurable goals for each of the minimum control measures.

C. Attach results of information collected and analyzed, including monitoring data, if any during the reporting period.

D. Attach a summary of the storm water activities you plan to undertake during the next reporting cycle (including an implementation schedule.)

E. Attach notice that you are relying on another government entity to satisfy some of your permit obligations (if applicable).

F. Attach a list of construction projects that your entity has paid for during the reporting period.

Any person who knowingly makes a false, fictitious, or fraudulent material statement, orally or in writing, to the Illinois EPA commits a Class 4 felony. A second or subsequent offense after conviction is a Class 3 felony. (415 ILCS 5/44(h))

David A. Strohl
Owner Signature:

David Strohl
Printed Name:

09/26/21
Date:

Village Administrator
Title:

EMAIL COMPLETED FORM TO: epa.ms4annualinsp@illinois.gov

or Mail to: ILLINOIS ENVIRONMENTAL PROTECTION AGENCY
WATER POLLUTION CONTROL
COMPLIANCE ASSURANCE SECTION #19
1021 NORTH GRAND AVENUE EAST
POST OFFICE BOX 19276
SPRINGFIELD, ILLINOIS 62794-9276

VILLAGE OF FORSYTH

April 1, 2020 to March 31, 2021 MS4 Annual Facilities Inspection Report (Year 7)

A. CHANGES TO BMP'S

- 1. No changes to BMPs were proposed during the Reporting Period.

B. COMPLIANCE WITH PERMIT CONDITIONS

C. RESULTS OF INFORMATION COLLECTED AND ANALYZED

D. ACTIVITIES FOR NEXT REPORTING CYCLE (APRIL 2021 TO MARCH 2022)

PUBLIC EDUCATION AND OUTREACH

1. BMP A.1 – Distributed Paper Material

B. Compliance with Permit Conditions	The Village, as a part of the Macon County MS4 communities, distributed flyers at the Village Hall. See Exhibits A through C for the flyers available.
C. Information Collected and Analyzed	N/A
D. Activities for Next Reporting Cycle	Continue to distribute fliers at Village Hall and distribute to residents at community events.

2. BMP A.2 – Speaking Engagement

B. Compliance with Permit Conditions	The Village, as a part of the Macon County MS4 communities, hosted a virtual MS4 Workshop in February 2019. Resources presented at the workshop included IDOT, Illinois EPA, Paradigm and JULIE. A copy of the invitation is available in Exhibit D. Other events normally held during the year were cancelled due to CoVID restrictions.
C. Information Collected and Analyzed	The MS4 workshop had 36 attendees.
D. Activities for Next Reporting Cycle	Speak at either one educational workshop or Village Board Meeting to inform public of construction site storm water management efforts. Continue support of Macon County SWCD public engagement.

3. BMP A.4 – Community Event

B. Compliance with Permit Conditions	The Village, as a part of the Macon County MS4 communities, continued distribution of the flyer at the Village Hall and hosted a virtual MS4 workshop in February 2019. The event was advertised through fliers. A copy of the invitation is available in Exhibit D. Other events normally held during the year were cancelled due to CoVID restrictions.
C. Information Collected and Analyzed	The MS4 workshop had 36 attendees.
D. Activities for Next Reporting Cycle	Continue to distribute fliers at Village Hall and distribute to residents at community events. Hold an annual public meeting in conjunction with the Macon County MS4 working group.

4. BMP A.6 – Other Public Education

B. Compliance with Permit Conditions	The Village, as part of the Macon County MS4 communities and the MCSWCD, maintained the website for storm water issues (www.maconcleanwater.com). The Village also published information about storm sewer projects and awareness in the Village Vision. See Exhibit D for the Village Vision articles.
C. Information Collected and Analyzed	Visits to the website totaled 9,869 for the reporting year. See Exhibit E for the report. The Village Vision is distributed to all water customers of the Village.
D. Activities for Next Reporting Cycle	Continue to update and maintain the current MS4 Community website and work to increase website visits by 10% in conjunction with the Macon County MS4 Community.

Annual Evaluation Statement: Public Education and Outreach (Section A)

For the next year, the Village will assist the Macon County SWCD with the annual workshop and training session in collaboration with the Champaign MS4 Organization to expand the audience for education training events. In addition, MS4 brochures will remain available at the SWCD office of the participating Macon County MS4 working group including at the Forsyth Village Hall. This gives citizens across the county opportunities to pick up the educational materials. Over the year, we will look for other areas to make the brochures available.

PUBLIC PARTICIPATION / INVOLVEMENT

1. BMP B.3 – Stakeholder Meeting

B. Compliance with Permit Conditions	The Village attended a local NPDES coordination meeting with other members of the Macon County MS4 community.
C. Information Collected and Analyzed	Meetings were held at least every other month through the year.
D. Activities for Next Reporting Cycle	Continue to attend local NPDES coordination meetings.

2. BMP B.4 – Public Hearing

B. Compliance with Permit Conditions	An update to the Village ordinances were implemented in April 2020 at a Village Board meeting.
C. Information Collected and Analyzed	N/A
D. Activities for Next Reporting Cycle	Continue to review the Storm Water Ordinance and present changes to Village Board for approval.

3. BMP B.6 – Program Involvement

B. Compliance with Permit Conditions	The Village attended local NPDES coordination meetings with other members of the Macon County MS4 community. The Village offers recycling services to its residents. In addition, recycling containers are available at Village events.
C. Information Collected and Analyzed	Meetings were held at least every other month through the year.
D. Activities for Next Reporting Cycle	Continue to attend local NPDES coordination meetings.

Annual Evaluation Statement: Public Participation / Involvement (Section B)

In conjunction with the Macon County MS4 communities, we hold training seminars for local contractors, engineers and public works employees. We believe we have met the requirements of this section with our meetings, recycling program and website maintenance.

ILLICIT DISCHARGE DETECTION AND ELIMINATION

1. BMP C.1 – Sewer Map Preparation

B. Compliance with Permit Conditions	The Village maintains a map of Village storm sewers and outfalls. The map is continually updated to reflect new development within the Village limits.
C. Information Collected and Analyzed	N/A
D. Activities for Next Reporting Cycle	Continue revisions to the storm sewer map as necessary. Conversion of the map to a GIS database is anticipated in the next reporting period.

2. BMP C.6 – Program Evaluation and Assessment

B. Compliance with Permit Conditions	The Village includes language in the Storm Water Ordinance that prohibits non-storm water discharges to the storm sewer system. A screening, inspection and follow-up program to identify non-storm water discharges and illicit discharges. 10%-15% of mapped outfalls were selected for dry weather screening, based on potential for illicit discharges. These outfalls are inspected during dry weather up to 3 times per year. Inspection reports are maintained and encountered discharges are investigated and eliminated.
C. Information Collected and Analyzed	Outfall structures monitored at the following locations and dates: 1. Timber & McDonald – 6/9/20, 8/17/20. 2. Market Street – 6/9/19, 8/17/20. 3. Main Park – 6/9/20, 8/17/20. See Exhibit G for reports. Steven’s Creek was monitored at the following locations and dates: 1. County #20 & Hundley – influent – 6/9/19, 8/17/20. 2. Woodland & Lantern – effluent – 6/9/19, 8/17/20. See Exhibit F for reports.
D. Activities for Next Reporting Cycle	Stevens Creek will continue to be monitored using the Illinois River Watch site identification form. Outfalls will continue to be monitored up to 3 times per a year.

3. BMP C.7 – Visual Dry Weather Screening

B. Compliance with Permit Conditions	The Village includes language in the Storm Water Ordinance that prohibits non-storm water discharges to the storm sewer system. A screening, inspection and follow-up program to identify non-storm water discharges and illicit discharges. 10%-15% of mapped outfalls were selected for dry weather screening, based on potential for illicit discharges. These outfalls are inspected during dry weather up to 3 times per year. Inspection reports are maintained and encountered discharges are investigated and eliminated.
C. Information Collected and Analyzed	<p>Outfall structures monitored at the following locations and dates:</p> <ol style="list-style-type: none"> 1. Timber & McDonald – 6/9/20, 8/17/20. 2. Market Street – 6/9/20, 8/17/20. 3. Main Park – 6/9/20, 8/17/20. <p>See Exhibit G for reports.</p> <p>Steven’s Creek was monitored at the following locations and dates:</p> <ol style="list-style-type: none"> 1. County #20 & Hundley – influent – 6/9/19, 8/17/20. 2. Woodland & Lantern – effluent – 6/9/19, 8/17/20. <p>See Exhibit F for reports.</p>
D. Activities for Next Reporting Cycle	Stevens Creek will continue to be monitored using the Illinois River Watch site identification form. Outfalls will continue to be monitored up to 3 times per a year.

Annual Evaluation Statement: Illicit Discharge Detection and Elimination (Section C)

To evaluate the effectiveness of our illicit detection efforts, the following will be documented:

Location #1 Intersection of Hundley and County Highway 20

Date	Worst Weather in past 48 hours	Temperature Air	Water Appearance	Turbidity
6-9-2020	Overcast/Showers	77 °F	Mostly Clear	Slight
8-17-2020	Clear/Sunny	86 °F	Clear	Clear/Slight

Location #2 Woodland

Date	Worst Weather in past 48 hours	Temperature Air	Water Appearance	Turbidity
6-9-2020	Overcast/Showers	76 °F	Partly Clear	Slight
8-17-2020	Clear/Sunny	86 °F	Clear/Milky	Clear/Slight

Storm water infrastructure will continue to be mapped. The Village will inspect Stevens Creek summer 2020 and compare the results to past years.

CONSTRUCTION SITE RUNOFF CONTROL

1. BMP D.1 – Regulatory Control Program

B. Compliance with Permit Conditions	The Village contracts with the MCSWCD to provide reviews of the erosion control plans and SWPPPs within the Village limits as well as site inspections. Site plans that lack proper erosion control measures are returned to the developer for revision and resubmittal. In August 2020, these responsibilities were turned over to the Village staff.
C. Information Collected and Analyzed	3 permits were issued through MCSWCD during the reporting year. 5 permits were issued through the Village.
D. Activities for Next Reporting Cycle	Continue site plan reviews by the Village for compliance with local erosion and sediment control rules. The Village will evaluate the need for Stormwater Ordinance Revisions and recommend revisions.

2. BMP D.2 – Erosion and Sediment Control BMPs

B. Compliance with Permit Conditions	The Village provides commercial site plan and subdivision plan reviews using a consultant for compliance with local erosion and sediment control requirements.
C. Information Collected and Analyzed	Plans Reviewed: No site requiring review occurred during the report year.
D. Activities for Next Reporting Cycle	Continue site plan reviews by the Village for compliance with local erosion and sediment control rules.

3. BMP D.4 – Site Plan Review Procedures

B. Compliance with Permit Conditions	The Village provides commercial site plan and subdivision plan reviews using a consultant for compliance with local erosion and sediment control requirements.
C. Information Collected and Analyzed	Plans Reviewed: No site requiring review occurred during the report year.
D. Activities for Next Reporting Cycle	Continue site plan reviews by the Village for compliance with local erosion and sediment control rules.

4. BMP D.5 – Public Information Handling Procedures

B. Compliance with Permit Conditions	The phone number for the Village Hall is available on the website for the general public to report storm water issues. Complaints were forwarded to Public Works, investigated and handled appropriately.
C. Information Collected and Analyzed	N/A
D. Activities for Next Reporting Cycle	Continue to track and report complaints.

5. BMP D.6 – Site Inspection/Enforcement Procedures

B. Compliance with Permit Conditions	The MCSWCD provides onsite inspections during active construction. Village staff was responsible for follow-up enforcement of the storm water requirements. In August 2020, these responsibilities were turned over to the Village staff.
--------------------------------------	-------------------------------------------------------------------------------------------------------------------------------------------------------------------------------------------------------------------------------------------

C. Information Collected and Analyzed	3 permits were issued through MCSWCD during the reporting year. 5 permits were issued through the Village.
D. Activities for Next Reporting Cycle	Continue to conduct site inspections for developments subject to ILR10 and perform follow-ups as necessary.

Annual Evaluation Statement: Construction Site Runoff Control (Section D)

To evaluate the effectiveness of our Construction Site controls, the following will be documented in the next reporting cycle:

- Which BMPs are regularly installed correctly and incorrectly. This can guide future trainings. Inlet controls, stabilized construction entrances, and utilizing silt fence above its capabilities is still an issue on many of our sites.
- Evaluate numbers of follow up site inspections. Our goal is to have an overall downward trend.

POST-CONSTRUCTION RUNOFF CONTROL

1. BMP E.2 – Regulatory Control Program

B. Compliance with Permit Conditions	The Village’s Storm Water Management ordinance was enforced pertaining to the design, installation and maintenance of post-construction water quality BMPs in accordance with the most current Illinois Urban Manual Standards.
C. Information Collected and Analyzed	N/A
D. Activities for Next Reporting Cycle	Continue to enforce storm water management technical guidelines as set forth in the Illinois Urban Manual. The Village will evaluate the need for Stormwater Ordinance Revisions and recommend revisions.

2. BMP E.4 – Pre-Construction Review of BMP Designs

B. Compliance with Permit Conditions	The Village provides commercial site plan and subdivision plan reviews using a consultant for compliance with local erosion and sediment control requirements.
C. Information Collected and Analyzed	Plans Reviewed: No site requiring review occurred during the report year.
D. Activities for Next Reporting Cycle	Continue site plan reviews by the Village for compliance with local erosion and sediment control rules and continue to enforce storm water regulations.

3. BMP E.5 – Site Inspections during Construction

B. Compliance with Permit Conditions	The MCSWCD provides onsite inspections during active construction. Village staff was responsible for follow-up enforcement of the storm water requirements.
C. Information Collected and Analyzed	11 Land Disturbance permits were issued, and several sites are still open. See Exhibit E for report from MCSWCD.
D. Activities for Next Reporting Cycle	Continue site inspections by MCSWCD of reported construction sites.

4. BMP E.6 – Post-Construction Inspections

B. Compliance with Permit Conditions	The Village monitors outfall structures and detention basins.
C. Information Collected and Analyzed	Outfall structures were monitored at the following locations and dates: 1. Timber & McDonald – 6/9/20, 8/17/20. 2. Market Street – 6/9/20, 8/17/20. 3. Main Park – 6/9/20, 8/17/20. See Exhibit G for reports. 8 Detention Basins were inspected during the reporting period. See Exhibit I for the reports.
D. Activities for Next Reporting Cycle	Continue evaluation of existing operation and maintenance policies and amend as necessary.

Annual Evaluation Statement: Post-Construction Runoff Control (Section E)

To evaluate the effectiveness of our Post Construction controls, the following will be documented:

The SWCD partners with the Village of Forsyth, Village of Mt. Zion, and the City of Decatur to inspect 25% of each municipality’s detention basins per year. The most common maintenance issues are clearing woody vegetation from the outfall and light scour erosion at the outlets. Knowing these items are common may direct future training/education.

POLLUTION PREVENTION / GOOD HOUSEKEEPING

1. BMP F.1 – Employee Training Program

B. Compliance with Permit Conditions	Employees attended the MS4 workshop in Feb. 2021. Employees also attended a mosquito control workshop on March 29, 2021. The Village employees also attended Illinois Department of Agriculture herbicide training.
C. Information Collected and Analyzed	N/A
D. Activities for Next Reporting Cycle	Continue employee training program.

2. BMP F.3 – Municipal Operations Storm Water Control

B. Compliance with Permit Conditions	The Village continued the practice of washing their vehicles in closed facilities that drain to sanitary sewers.
C. Information Collected and Analyzed	N/A
D. Activities for Next Reporting Cycle	Continue to enforce the use of the designated wash facilities.

3. BMP F.6 – Other Municipal Operations Control

B. Compliance with Permit Conditions	The Village continued to use salt application devices to regulate salt applied to roads for snow removal and stores its roadway deicing salt in an enclosed facility which reduces salt loss from storm water runoff. The Village continually maintains stormwater infrastructure by picking up litter every Friday. The Village also conducted a Village wide clean up April 2020. Village staff also inspects Steven’s Creek after large rain events. Catch basins and storm sewer inlets were cleaned 3/17/20, 4/23/20, 4/29/20, 11/25/20, 12/23/20, 3/17/21. Street sweepings were performed on a weekly basis.
--------------------------------------	---------------------------------------------------------------------------------------------------------------------------------------------------------------------------------------------------------------------------------------------------------------------------------------------------------------------------------------------------------------------------------------------------------------------------------------------------------------------------------------------------------------------------------------------------------------------------------------------------------------------

C. Information Collected and Analyzed	N/A
D. Activities for Next Reporting Cycle	Continue inlet cleaning, salt storage and application reduction measures, street sweepings, and appropriate use of fertilizers.

Annual Evaluation Statement: Pollution Prevention / Good Housekeeping (Section F)

To evaluate the effectiveness of our Good Housekeeping controls, the following will be documented:

Employee training: We plan to leave room at every MS4 Work Group Meeting for sharing of new educational resources, information. An effort will be made to share educational items across municipalities.

The Village will encourage employees to notify their supervisor of any housekeeping items to be addressed.

E. PERMIT OBLIGATIONS PERFORMED BY ANOTHER ENTITY

The Village of Forsyth along with the Village of Mt. Zion and the City of Decatur has contracted with the Macon County Soil and Water Conservation District (SWCD) for assistance with educational and public outreach portions of the permit.

F. CONSTRUCTION PROJECTS DURING REPORTING PERIOD

One Village of Forsyth construction project disturbed one or more acres for the reporting year. A road rehabilitation on Phillip Circle and Cale Court was performed in summer 2020. A separate ILR10 permit was opened for this project.

G. Monitoring Program

The Village completed a visual observation at two locations of Stevens Creek, one upstream where the creek enters the Village and one where the creek exits the Village. Outfall monitoring reports are attached as Exhibit F.

Best Management Practices for Individual Lot Construction

Correctly installed and maintained BMP's can help ensure that sediment generated from construction activity remains on-site. The following BMP's are commonly used for individual lot construction:

Construction Entrance

- Use to prevent tracking soil onto road
- Use 2"-3" stone, 6" deep
- Install during clearing phase and maintain throughout construction
- Install geotextile fabric under entrance



Rock Outlet Protection

- Use to dissipate energy from concentrated flows
- Helps prevent eroded channels downstream
- Use oversized stone appropriate for design velocities
- Install geotextile fabric under riprap



Sediment Barriers

- Use to trap sediment and intercept runoff
- Install prior to clearing phase
- Ensure silt fence is installed correctly by trenching a portion of it in the ground and place stakes on the downhill side
- Maintain until vegetation is established; keep it upright and remove collected sediment
- Do not use on steep slopes or concentrated flow areas



Sediment Cleanup

- At the end of each work day sweep or scrape soil tracked onto roads
- After storm events inspect for off-site sediment movement and repair damage to barriers
- Remove sediment that penetrated barriers and remove build-up



Inlet Protection

- Protect all stormwater inlets- they are a direct conveyance to streams and rivers
- Install prior to clearing phase
- Filter fabric and temporary seeding are standard for inlet protection

Stockpile Placement and Protection

- Build stockpiles away from critical areas such as streams, drainage ways, and stormwater inlets
- Use temporary seed, such as rye or winter wheat, to stabilize pile until removed or re-graded



Re-vegetation/ Surface Protection

- Try to preserve existing trees, shrubs, and other vegetation when possible
- Use to stabilize exposed surfaces from erosion
- Use seed or sod to cover exposed soils after final grade is completed
- Seed critical areas such as drainage swales, right-to-way areas, areas near curb inlets, buffer areas along streams and wetlands
- Mulching can be used when temporary seeding is not practical and can be done in any weather situation



“All the water that will ever be is right now”

EXHIBIT A

Why do we care about Erosion from Construction Sites?

Sediment is the number one pollutant that flows from construction sites. It degrades water quality and can harm our water supply.

Macon County, the City of Decatur, the Village of Forsyth, and the Village of Mt. Zion are working together to do their part in protecting and improving water quality.

This brochure is designed to be a quick reference to some commonly used Best Management Practices to prevent erosion.

Failure to install BMP's could bring about costly fines, stop work orders, and expensive clean ups.



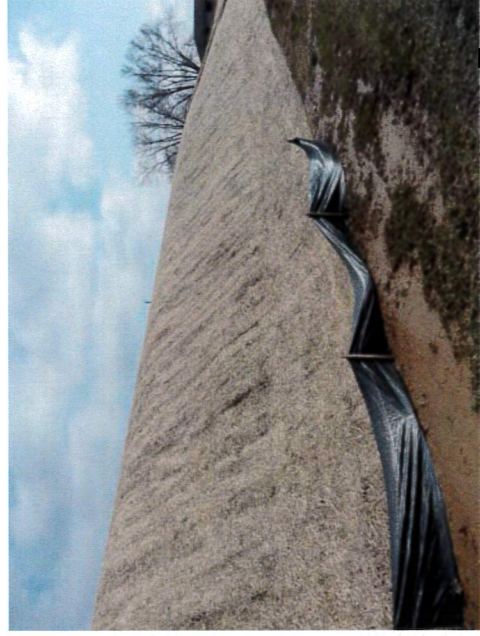
Who Should I Contact?

	City of Decatur Mary Cave 217-424-2724
	Macon County Jennifer Hoffman 217-425-6583
	Village of Forsyth Larry Coloni 217-433-9597
	Village of Mt. Zion Grant Corum 217-864-4811

For Inspections:
In Macon County: 217-425-6583
Decatur, Forsyth, & Mt. Zion:
Macon County Soil and Water
Conservation District
217-877-5670 Ext 3

EROSION & SEDIMENT CONTROL TIPS FOR INDIVIDUAL LOT CONSTRUCTION

www.maconcleanwater.org



A collaborative effort of the Macon County MS4 Communities

What is Green Infrastructure?

Green Infrastructure is a network for solving urban and climatic challenges by building with nature. The main components are stormwater management, climate adaptation, less stress heat, better air quality, and clean water and healthy soils. It also serves to provide an ecological framework for social, economical, and environmental health of the surroundings.

Rain Gardens

Rain Gardens are landscaped areas built in a depression that are designed to capture and filter stormwater runoff from a roof or other impervious surface. The plants and soil of the rain garden provide an easy, natural way of reducing the amount of stormwater runoff from individual residential properties.

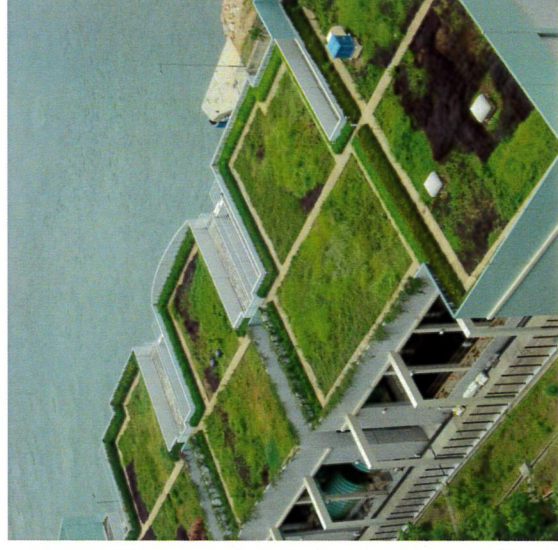
Pervious Pavement

Pervious pavement may include paving blocks, grid pavers, or pervious concrete installed according to manufacturer's specifications. Pervious pavement can be used for driveways and patios with a stone reservoir underneath. The reservoir temporarily stores surface runoff before infiltrating it into the soil below the stone reservoir. Runoff is infiltrated directly into the soil and improves water quality.



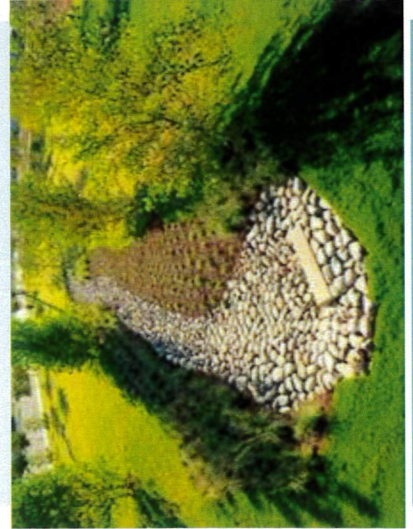
Green Roofs

A green roof is a roof that is partially or completely covered with vegetation and waterproofing membrane. A green roof's purpose is to absorb rainwater, provide insulation, create habitat for wildlife, and help lower urban air temperatures.



Bioswales

Bioswales are storm water runoff conveyance systems that provide an alternative to storm sewers. They can absorb low flows or carry runoff from heavy rains to storm sewer inlets or directly to surface waters. Bioswales improve water quality by infiltrating the first flush of storm water runoff and filtering the large storm flows they convey. The majority of annual precipitation comes from frequent, small rain events. Much of the value of bioswales comes from infiltrating and filtering nearly all of this water.



Who should I contact if I want to know more about these practices?

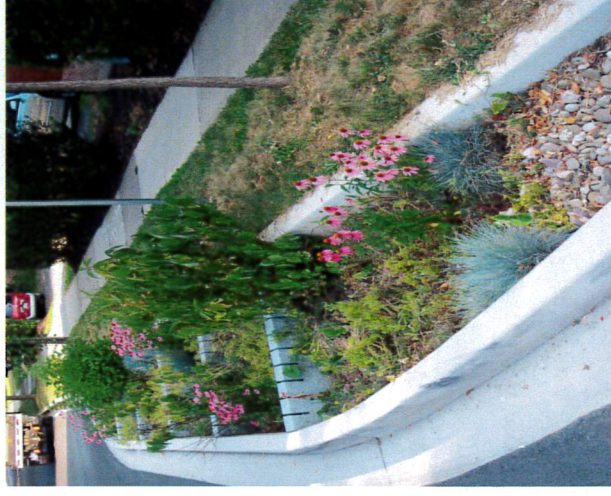
City of Decatur
217-424-2724

Macon County
217-425-6583

Village of Forsyth
217-433-9597

Village of Mt. Zion
217-864-4811

Green Infrastructure



*Prepared by: Macon County
Municipal Separate Storm
Sewer System (MS4)
Communities*

Basics of Water Pollution

Point Source Water Pollution

This is pollution that flows from pipes or comes from specific points such as an industrial site. This type of pollution is regulated by State laws.

Non-Point Source Water Pollution

This type of pollution results from land runoff, precipitation, atmospheric deposition, drainage and seepage. This pollutant is caused by rainfall and snowmelt moving over the ground. This activity collects pollutants and chemicals which are deposited into various creeks, lakes and water sources. This type of pollutant is not closely regulated but can be prevented by education.

Be The Solution to Storm Water Pollution

How Can You Make A Difference?

Household Chemicals

Problem: Many people do not know where to dispose of chemicals from the home.

Solution: Take all household chemicals to collection sites on specified days. Please see Macon County Environmental Agency website for additional information and the specific collection dates. www.macongreen.com

Yard and Garden

Problem: Many homeowners over fertilize their yard because they enjoy the look of a green yard.

Solution: Do not over fertilize your yard. Always follow the manufacturer's recommendations.

Do not apply when rain is in the forecast. Not only is it a waste of time and money, but the chemicals easily wash away in the runoff after a storm.

Do choose natural fertilizers such as compost or grass clippings.

Pet Waste

Problem: Many people allow their pet's waste to wash down the storm drain.

Solution: Pick up pet's waste when going for walks.

Auto Maintenance

Problem: Many people are not careful when performing routine maintenance on their vehicles.

Solution: Do not dump motor oil or fluids down a storm drain.

Do not clean up fluid spills with water. Other alternatives for clean up is kitty litter, sawdust, or wood chips to soak up the spill.

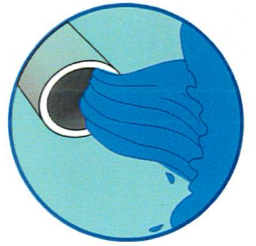
Do take your vehicle to the car wash so the soap and dirt is properly disposed of.

Do properly dispose of all motor oil and fluids properly. Many oil change shops will take used oil at no charge.



Mission Statement for Municipal Separate Storm Sewer System

Our Municipal Separate Storm Sewer System (MS4) purpose is to protect, maintain, and enhance the environment of the jurisdictions and the public health, safety, and welfare of the citizens by controlling discharges of pollutants to the storm water system, by maintaining and improving the quality of the receiving waters into which the storm water outfalls flow, including without limitation lakes, rivers, streams, ponds, wetlands, and groundwater, and to enable compliance with the National Pollution Discharge Elimination System permit (NPDES) and applicable regulations for storm water discharges.



Web Sites for More Information:

www.maconcleanwater.com

Contact:

City of Decatur 424-2747

Macon County 424-1466

Village of Forsyth 877-9445

Village of Mt. Zion 864-4811



WHEN IT RAINS..... IT DRAINS

BE THE SOLUTION TO STORMWATER POLLUTION



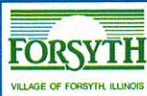
MACON COUNTY MS4 ANNUAL CONTRATORS WORKSHOP

Macon County MS4 Work Group brings to you
"Virtual Resources for Contractors Workshop"

Resource links include presentations/information from :

- ◆ IDOT
- ◆ ILLINOIS EPA
- ◆ PARADIGM
- ◆ ILLIE

This virtual event will be published February 1, 2021
to www.maconcleanwater.com and will be available as our annual Contractors
Workshop through February 28, 2021. Feel free to share with your employees!



If you have any questions or need anything further please reach out to Macon
County Soil and Water Conservation District at info@maconcountyswd.com or
217-877-5670 x3

Clarke Workshop March 29 - Chris Novak

2 messages

Austin Stewart <austins@achievainc.com>

Mon, Mar 15, 2021 at 8:58 AM



Hello Illinois Mosquito Control Pros!

The Clarke Workshop will go on in 2021.... (VIRTUALLY!)

Click on ONE now of the two options to register.

The Clarke's FULL Mosquito Control Workshop (A)

Monday March 29th, 8am – 12:30pm Central Time

(Clarke's 4-hour workshop with 1-hour larvicide certification on request)

The Clarke IDPH 1-Hour Larvicide Workshop (B)

Monday March 29th, 2pm – 3pm Central Time

(Clarke's IDPH workshop for 1-hour larvicide certification)

Rummage sale, Clean Up Days moved to June

New dates are tentative

The Village has tentatively rescheduled the Forsyth Rummage Sale and Spring Clean Up Days from May to June. The annual rummage sale is now scheduled for Friday and Saturday, June 5-6, from 8 a.m.-3p.m. The following week, running from Monday, June 8-Friday, June 12, the Village will hold its community-wide Clean Up Days to accommodate any undesired leftovers from the rummage sale.

The rummage sale is open to all residents, no signup is required. Please watch for an ad to run in the *Decatur Herald & Review*. If you plan to do some shopping during the rummage sale, watch for signs on street corners and in yards.

Clean Up Days is a free service provided by the Village annually. All Forsyth residents may take advantage of this popular spring-cleaning event to dispose of unwanted large items. Please note that restrictions apply.

Clean Up Days exceptions include: landscape waste, oil, hazardous chemicals, paint, tires, household trash and railroad ties. While electronics are banned from landfills, the Village uses a state-certified recycler who will take eligible electronics for recycling.

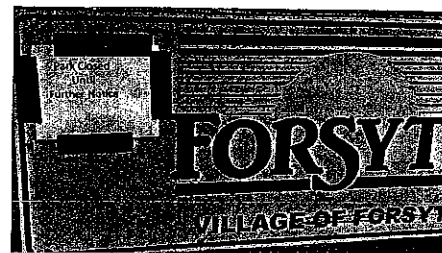
The Village apologizes for any inconvenience caused by these changes, but every effort is being made to follow all rules and regulations to keep people safe during this challenging time.

And, please remember: these new dates are TENTATIVE at this point. ♦

Village parks closed due to social distancing breaches

Barriers and signage back up last week's announcement by the Village on its Facebook page that "Forsyth Parks are closed until further notice."

In an April 9 email, Trustee David Wendt wrote: "We have officially closed our main Village park and pocket parks. Village Hall and deputies have received various calls and reports of people congregating in the park and not maintaining social distance. We initially attempted to reduce these opportunities by closing the gates on parking lots where they existed, closing bathrooms, and closing tennis courts. However, recent warm weather and more people in the park have increased the reports mentioned above. So now, barricades will close off parking lots without gates, we will cordon off playgrounds, and notification signs will be posted. Bike/walking paths are open and



Forsyth Park and the Village's pocket parks are all closed in the wake of numerous reports of violations of the state's social distancing protocols implemented to help fight the coronavirus pandemic.

available throughout the Village. I hate that the Village has to do this, but it seems necessary at this point. For example, I've been told of people climbing the tennis courts fences to get into the courts, even though they were closed. Deputies are aware of the new orders and have clear direction to disperse any congregating of people in the parks." ♦

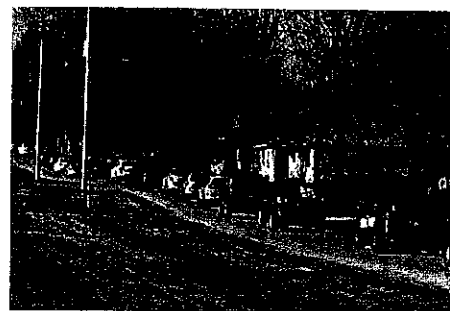
Teachers' parade earns an A+

The hardest part of these stay-at-home days for teachers is not being able to see their students, according to Jessica Hill, school social worker at Maroa-Forsyth Grade School.

"Yeah, we're missing our kids," Hill said.

But, there's not much you can do about it, right? Wrong.

Hill noticed that teachers in other school districts were getting in their cars and going to see their students, even if it meant they could only wave as they drove by. So she organized



The teachers' parade, comprised of a caravan of 57 vehicles, makes its way on a three-hour trek through neighborhoods in the Maroa-Forsyth School District so that teachers and students and their families can feel connected during this historic coronavirus pandemic.

continued on page 3

Library News

continued from page 2

investment research database features data and analysis on over 15,000 international and domestic stocks, 25,000 mutual funds and more than 1,500 exchange-traded funds. Their resources can help individuals reach financial goals, whether they're seasoned investors or just starting out. With ratings and analyst reports, online classes and live webinars users can explore the right topics, at the right level and in the right format for them. Morningstar Investment Research Center is available on the "materials search" section of the library's website and accessible with your library card.

Virtual Story Times

Preschool story times are some of our favorite events at the library, and we know our library families like them, too. We are posting virtual story times on our Facebook page to help keep us all connected. Join us Tuesday and Thursday mornings at 10 am. Tune in for new story times, or watch previously posted ones from home. We have even added fun activities to go along with each session. For instance, post a picture of your silly socks, or create a LEGO animal sculpture and share it in the comments.

Reach Out to HPCV

Stuck at home, wishing you could use this time to make a difference in someone's life? Maybe you have young ones at home that could use an excuse to practice writing skills? Send a letter, card or drawing that will brighten the day of a resident at Hickory Point Christian Village. Let these citizens of Forsyth know that we are thinking about them even while they are restricted from visitors and outside activities. You can participate by sending mail to Adrienne Ranck, HPCV, 565 W. Marion Ave., Forsyth, IL 62535.

Spring into Reading Challenge

Already reading while at home? Join

the library's spring reading contest for a chance to win a prize. Fill out the reading log provided on the library's Facebook page, or use your creativity to create one of your own. Ages 0-9 will need to read five hours or more, and ages 10 and above will need to read 10 hours or more. No registration is required. Just bring your completed reading log into the library when we re-open to earn that prize. This challenge runs through May 1.

Earth Day Activities

Be sure to check out the library's Facebook page for Earth Day activities April 20-24. Also, join Earthday.org (or on social media @earthdaynetwork) for 24 hours of action that you can take from home with EARTHRISE on Wednesday, April 22. We may be isolated, but we aren't alone because we're all in this together, here on Earth.

Art in the Time of Quarantine

Let's showcase our community talent. If you or your family are creating drawings, poetry or other works of art while spending time at home, we would love to display them at the library when we reopen. Save your creations for our future community art show. ♦

Parade

continued from front page

a teachers' parade for April 1, complete with an escort provided by the fire departments from Hickory Point and Maroa. The plan was communicated from teachers to students and via the school district's social media platforms.

"I'd seen several other school districts do it and thought it'd be cool," Hill, an alumna of Maroa-Forsyth schools herself, said.

And, the turnout of teachers and families was "amazing."

"We had 57 vehicles participate — teachers and school faculty from all three buildings," Hill said. "We

Reminder: Grass clippings on street violate law

EXHIBIT 

Class B misdemeanor enforced by Village staff

Just a friendly reminder during mowing season that disposing of grass clippings into the street is a violation of the state Litter Control Act. Violations of the act are considered a Class B misdemeanor and are subject to fines, especially for repeat offenders.

Last year trustees passed Ordinance No. 2019-24, an amendment to Chapter 90 of the Village Code regarding placing materials on public streets and other public property. The ordinance made the offense enforceable by the Village rather than by law enforcement, however, it is a Class B misdemeanor. Generally, a warning would be issued first.

Environmentally, grass clippings can release pollutants from lawn chemicals and clog storm sewers thus creating a risk of flooding. When you keep grass clippings out of the street, you are doing your part to help reduce pollution. ♦

went all through the neighborhoods in Forsyth and then south across Interstate 72, across Route 51 and then headed up to Maroa.

"It took about three hours to do all of it."

She said her teacher-friends were joking that it was lucky that gas prices are low right now.

The best part, she said, was seeing everybody come out holding signs, and some had even decorated their homes. She loved that families whose kids were already grown up and gone also wanted to take part.

"It was great seeing the smiles on the kids' and adult faces," Hill said. "It was really cool." ♦

Matthew B. Foster, P.E., P.L.S.

From: Jennifer Gunter <jgunter@co.macon.il.us>
Sent: Wednesday, May 19, 2021 1:35 PM
To: Matthew B. Foster, P.E., P.L.S.; Caswell, Paul E; Jeremy Buening, P.E., S.E.
Subject: FW: Yearly Report

Here is the items for our annual report from SWCD. Let me know if you have any questions.

Thanks,

Jennifer Gunter
Director of Planning & Zoning
141 South Main St, Suite 501
Decatur, IL 62523
(217) 424-1466
Jgunter@co.macon.il.us

From: Jennifer Gunter
Sent: Tuesday, March 9, 2021 10:12 AM
To: angela maconcountyswcd.com <angela@maconcountyswcd.com>
Subject: RE: Yearly Report

Thank you.

Jennifer Gunter
Director of Planning & Zoning
141 South Main St, Suite 501
Decatur, IL 62523
(217) 424-1466
Jgunter@co.macon.il.us

From: angela maconcountyswcd.com <angela@maconcountyswcd.com>
Sent: Tuesday, March 9, 2021 10:05 AM
To: Jennifer Gunter <jgunter@co.macon.il.us>
Subject: Re: Yearly Report

CAUTION: [External Email]

This email originated from outside our organization. Do not click links or open attachments unless you recognize the sender and know the content is safe.

Contractors workshop visits 36

Link was shared with Champaign county swcd to use as she wanted. She did not send postcards but shared the link.

Website views 9,869

LDPs = 16 though the SWCD

Mt. Zion 3
Forsyth 3
Decatur 10

Site Inspections locations

Mt. Zion 11 (3 new 8 prior year active)
Decatur 26 (10 new 12 prior year active)
Forsyth 4 (3 new 1 prior year active)

Angela Daily

Watershed Specialist/Administrative Coordinator
Macon County Soil & Water Conservation District
3342 North President Howard Brown Blvd.
Decatur, IL 62521
Phone: 217-877-5670 x3

From: Jennifer Gunter <jgunter@co.macon.il.us>
Sent: Monday, March 8, 2021 3:52 PM
To: angela.maconcountyswcd.com <angela@maconcountyswcd.com>
Subject: Yearly Report

Angela,

We have an MS4 meeting next Wednesday and we were going to start discussing the annual report that is due soon. I have attached a list of things we will need from you for our report. Let me know if you have any questions.

Thanks,

Jennifer Gunter
Director of Planning & Zoning
141 South Main St, Suite 501
Decatur, IL 62523
(217) 424-1466
[Jgunter@co.macon.il.us](mailto:jgunter@co.macon.il.us)



EFFICIENT

Outfall Monitoring Sheet

Site ID #: STEVENS CREEK
 Stream: WOODLAND + LAMP
 Date: 6-9-20

Name(s) of Inspector(s): LSMN SUMMERS
 Start Time: 10:45 am pm End Time: 11:00 am pm

Present Weather <input type="checkbox"/> Clear/Sunny <input checked="" type="checkbox"/> Overcast <input checked="" type="checkbox"/> Showers (Intermittent) <input type="checkbox"/> Rainy (Steady) <input type="checkbox"/> Stormy (Heavy)	Worst Weather in past 48 hours <input checked="" type="checkbox"/> Clear/Sunny <input type="checkbox"/> Overcast <input type="checkbox"/> Showers (Intermittent) <input type="checkbox"/> Rain (Steady) <input type="checkbox"/> Storm (Heavy)	Temperature Air <u>77</u> °F °C Water _____ °F °C
Water Appearance <input checked="" type="checkbox"/> Clear <u>partly</u> <input type="checkbox"/> Milky <input type="checkbox"/> Foamy <input type="checkbox"/> Dark Brown <input type="checkbox"/> Oily Sheen <input type="checkbox"/> Reddish <input type="checkbox"/> Green <input type="checkbox"/> Other _____	Water Odor <input checked="" type="checkbox"/> None <input type="checkbox"/> Sewage <input type="checkbox"/> Chlorine <input type="checkbox"/> Fishy <input type="checkbox"/> Rotten Eggs <input type="checkbox"/> Petroleum <input type="checkbox"/> Other _____	Turbidity <input type="checkbox"/> Clear <input checked="" type="checkbox"/> Slight <input type="checkbox"/> Medium <input type="checkbox"/> Heavy

Canopy Cover 0% 1-5% 6-25% 26-50% 51-75% 76-100%
Algal Growth 0% 1-5% 6-25% 26-50% 51-75% 76-100%
Substrate Siltation Coverage: Estimate the percentage of the stream bed that is covered by silt.
 0% 1-5% 6-25% 26-50% 51-75% 76-100%

Are there Submerged Aquatic Plants? Yes No

If yes, what types? _____
List the types of riparian (stream side) vegetation present at the site. _____
GRASS / TREES

Bottom Substrate: Using the percent codes below, record the percentage of each of the materials that make up the stream bottom by writing the percent code letter in the blank next to the bottom substrate type. If the substrate is not present at the site, write letter A in the blank.

Percent cover codes: A = 0% B = 1-5% C = 6-25% D = 26-50% E = 51-75% F = 76-100%

<u>B</u> Bedrock	<u>A</u> Cobble (2.5 in – 10 in)	<u>D</u> Sand (<0.1 in)
<u>A</u> Boulder (> 10 in)	<u>A</u> Gravel (0.1 in – 2.5 in)	<u>D</u> Silt
<u>B</u> Hard Pan Clay	Other _____	

Stream Discharge Estimate

Stream Width: 20 feet
A

If you can only record two depth or velocity measurements, please calculate the average by dividing the sum by 2.
If only one measurement is taken, use the single value as the average.

Depth Measurements:

1. 2 ft
2. _____ ft
3. _____ ft

Average Depth = _____ feet
B

Velocity Calculations:

- 10 ft ÷ _____ seconds = _____ ft/sec
 10 ft ÷ _____ seconds = _____ ft/sec
 10 ft ÷ _____ seconds = _____ ft/sec

Average Velocity = _____ ft/sec
C

Discharge (width x depth x velocity) _____ ft x _____ ft x _____ ft/sec = _____ ft³/sec
 A B C

Land Uses

Record all visible land uses occurring upstream and on either side of the stream site. Indicate which land uses are dominant (D) and which affect small areas (X). If a listed land use is not present, leave blank.

<u>1</u>	Forest (W1)	<u>1</u>	Logging (W2)	<u>D</u>	Golf Course (W3)
<u>X</u>	Grassland and Ungrazed Field (W4)	<u>1</u>	Commercial (W6)	<u>D</u>	Scattered Residential (W7)
<u>X</u>	High-Density Residential/Urban (W8)	<u>X</u>	Cropland (W9) Type? (W9T) _____	<u>1</u>	Sewage Treatment (W10)
<u>D</u>	Park (W11)	<u>1</u>	Mining (W12) Type? (W12T) _____	<u>1</u>	Sanitary Landfill (W13)
<u>1</u>	Livestock Pasture (W14)	<u>1</u>	Construction (W15) Type? (W15T) _____	<u>1</u>	Industrial (W16)
	Other (W17) _____				

Please circle YES or NO and provide the necessary information to answer the following questions:

1. Upstream dam? (including beaver dams) YES (NO)
If yes, approximately how far upstream? NONE NOTED
2. Wastewater treatment discharge upstream? YES (NO)
If yes, approximately how far upstream? _____
3. Any pipes emptying directly into or near your study site? YES (NO)
4. Channel Alteration. Has the stream been channelized (straightened) at your site? YES (NO)
If yes, what percentage of your site has been channelized? _____ %

Habitat Survey Notes (Include sediment odors, appearance, and/or the presence of silt, watershed features present but not listed on this data sheet, and any other information you feel is important or interesting to mention. Attach separate sheet if needed.)



INFILTRANT

Outfall Monitoring Sheet

Site ID #: STEVENS CREEK
 Stream: 00120 + NW 100'
 Date: 6-9-20

Name(s) of Inspector(s): LINDA SUMMERS
 Start Time: 9:00 am pm End Time: 9:15 am pm

Present Weather <input type="checkbox"/> Clear/Sunny <input checked="" type="checkbox"/> Overcast <input checked="" type="checkbox"/> Showers (Intermittent) <input type="checkbox"/> Rainy (Steady) <input type="checkbox"/> Stormy (Heavy)	Worst Weather in past 48 hours <input checked="" type="checkbox"/> Clear/Sunny <input type="checkbox"/> Overcast <input type="checkbox"/> Showers (Intermittent) <input type="checkbox"/> Rain (Steady) <input type="checkbox"/> Storm (Heavy)	Temperature Air <u>76</u> °F °C Water _____ °F °C
Water Appearance <input checked="" type="checkbox"/> Clear <u>MOSTLY</u> <input type="checkbox"/> Milky <input type="checkbox"/> Foamy <input type="checkbox"/> Dark Brown <input type="checkbox"/> Oily Sheen <input type="checkbox"/> Reddish <input type="checkbox"/> Green <input type="checkbox"/> Other _____	Water Odor <input checked="" type="checkbox"/> None <input type="checkbox"/> Sewage <input type="checkbox"/> Chlorine <input type="checkbox"/> Fishy <input type="checkbox"/> Rotten Eggs <input type="checkbox"/> Petroleum <input type="checkbox"/> Other _____	Turbidity <input type="checkbox"/> Clear <input checked="" type="checkbox"/> Slight <input type="checkbox"/> Medium <input type="checkbox"/> Heavy

Canopy Cover 0% 1-5% 6-25% 26-50% 51-75% 76-100%
Algal Growth 0% 1-5% 6-25% 26-50% 51-75% 76-100%
Substrate Siltation Coverage: Estimate the percentage of the stream bed that is covered by silt.
 0% 1-5% 6-25% 26-50% 51-75% 76-100%

Are there Submerged Aquatic Plants? Yes No

If yes, what types? _____
List the types of riparian (stream side) vegetation present at the site. _____
GRASS TREES

Bottom Substrate: Using the percent codes below, record the percentage of each of the materials that make up the stream bottom by writing the percent code letter in the blank next to the bottom substrate type. If the substrate is not present at the site, write letter A in the blank.

Percent cover codes: A = 0% B = 1-5% C = 6-25% D = 26-50% E = 51-75% F = 76-100%

<u>A</u> Bedrock	<u>A</u> Cobble (2.5 in – 10 in)	<u>D</u> Sand (<0.1 in)
<u>A</u> Boulder (> 10 in)	<u>A</u> Gravel (0.1 in – 2.5 in)	<u>D</u> Silt
<u>B</u> Hard Pan Clay	_____ Other _____	

Stream Discharge Estimate

Stream Width: 20 feet
A

If you can only record two depth or velocity measurements, please calculate the average by dividing the sum by 2.

If only one measurement is taken, use the single value as the average.

Depth Measurements:

1. 2 ft
2. ___ ft
3. ___ ft

Average Depth = ___ feet
B

Velocity Calculations:

- 10 ft ÷ ___ seconds = ___ ft/sec
 10 ft ÷ ___ seconds = ___ ft/sec
 10 ft ÷ ___ seconds = ___ ft/sec

Average Velocity = ___ ft/sec
C

Discharge (width x depth x velocity) ___ ft x ___ ft x ___ ft/sec = ___ ft³/sec
 A B C

Land Uses

Record all visible land uses occurring upstream and on either side of the stream site. Indicate which land uses are dominant (D) and which affect small areas (X). If a listed land use is not present, leave blank.

<input type="checkbox"/>	Forest (W1)	<input type="checkbox"/>	Logging (W2)	<input type="checkbox"/>	Golf Course (W3)
<input checked="" type="checkbox"/>	Grassland and Ungrazed Field (W4)	<input type="checkbox"/>	Commercial (W6)	<input checked="" type="checkbox"/>	Scattered Residential (W7)
<input type="checkbox"/>	High-Density Residential/Urban (W8)	<input checked="" type="checkbox"/>	Cropland (W9) Type? (W9T) _____	<input type="checkbox"/>	Sewage Treatment (W10)
<input type="checkbox"/>	Park (W11)	<input type="checkbox"/>	Mining (W12) Type? (W12T) _____	<input type="checkbox"/>	Sanitary Landfill (W13)
<input type="checkbox"/>	Livestock Pasture (W14)	<input type="checkbox"/>	Construction (W15) Type? (W15T) _____	<input type="checkbox"/>	Industrial (W16)
<input type="checkbox"/>	Other (W17) _____	<input type="checkbox"/>			

Please circle YES or NO and provide the necessary information to answer the following questions:

1. Upstream dam? (including beaver dams) YES NO
 If yes, approximately how far upstream? NONE NOTED
2. Wastewater treatment discharge upstream? YES NO
 If yes, approximately how far upstream? _____
3. Any pipes emptying directly into or near your study site? YES NO
4. Channel Alteration. Has the stream been channelized (straightened) at your site? YES NO
 If yes, what percentage of your site has been channelized? _____ %

Habitat Survey Notes (Include sediment odors, appearance, and/or the presence of silt, watershed features present but not listed on this data sheet, and any other information you feel is important or interesting to mention. Attach separate sheet if needed.)



INFLUENT

Outfall Monitoring Sheet

Site ID #: SPAWNS CROSSL
 Stream: OUTLET TO HUNLOCK
 Date: 8/11/20

Name(s) of Inspector(s): LIN
 Start Time: 1:00 am pm End Time: 1:50 am pm

Present Weather <input checked="" type="checkbox"/> Clear/Sunny <input type="checkbox"/> Overcast <input type="checkbox"/> Showers (Intermittent) <input type="checkbox"/> Rainy (Steady) <input type="checkbox"/> Stormy (Heavy)	Worst Weather in past 48 hours <input checked="" type="checkbox"/> Clear/Sunny <input type="checkbox"/> Overcast <input type="checkbox"/> Showers (Intermittent) <input type="checkbox"/> Rain (Steady) <input type="checkbox"/> Storm (Heavy)	Temperature Air <u>86</u> °F °C Water _____ °F °C
Water Appearance <input type="checkbox"/> Clear <input type="checkbox"/> Milky <input type="checkbox"/> Foamy <input type="checkbox"/> Dark Brown <input type="checkbox"/> Oily Sheen <input type="checkbox"/> Reddish <input type="checkbox"/> Green <input type="checkbox"/> Other _____	Water Odor <input checked="" type="checkbox"/> None <input type="checkbox"/> Sewage <input type="checkbox"/> Chlorine <input type="checkbox"/> Fishy <input type="checkbox"/> Rotten Eggs <input type="checkbox"/> Petroleum <input type="checkbox"/> Other _____	Turbidity <input checked="" type="checkbox"/> Clear <input checked="" type="checkbox"/> Slight <input type="checkbox"/> Medium <input type="checkbox"/> Heavy

Canopy Cover 0% 1-5% 6-25% 26-50% 51-75% 76-100%

Algal Growth 0% 1-5% 6-25% 26-50% 51-75% 76-100%

Substrate Siltation Coverage: Estimate the percentage of the stream bed that is covered by silt.
 0% 1-5% 6-25% 26-50% 51-75% 76-100%

Are there Submerged Aquatic Plants? Yes No

If yes, what types? GRASSES

List the types of riparian (stream side) vegetation present at the site. _____
TREES, GRASSES

Bottom Substrate: Using the percent codes below, record the percentage of each of the materials that make up the stream bottom by writing the percent code letter in the blank next to the bottom substrate type. If the substrate is not present at the site, write letter A in the blank.

Percent cover codes: A = 0% B = 1-5% C = 6-25% D = 26-50% E = 51-75% F = 76-100%

<u>A</u> Bedrock	<u>A</u> Cobble (2.5 in – 10 in)	<u>D</u> Sand (<0.1 in)
<u>A</u> Boulder (> 10 in)	<u>A</u> Gravel (0.1 in – 2.5 in)	<u>D</u> Silt
<u>B</u> Hard Pan Clay	_____ Other _____	







ESTABLISHMENT

Outfall Monitoring Sheet

Site ID #: SPRING CREEK
 Stream: WOODLAND & MEDICAL
 Date: 8-17-20

Name(s) of Inspector(s): LINN
 Start Time: 2:00 am (pm) End Time: _____ am pm

Present Weather <input checked="" type="checkbox"/> Clear/Sunny <input type="checkbox"/> Overcast <input type="checkbox"/> Showers (Intermittent) <input type="checkbox"/> Rainy (Steady) <input type="checkbox"/> Stormy (Heavy)	Worst Weather in past 48 hours <input checked="" type="checkbox"/> Clear/Sunny <input type="checkbox"/> Overcast <input type="checkbox"/> Showers (Intermittent) <input type="checkbox"/> Rain (Steady) <input type="checkbox"/> Storm (Heavy)	Temperature Air <u>86</u> °F °C Water _____ °F °C
Water Appearance <input checked="" type="checkbox"/> Clear <input checked="" type="checkbox"/> Milky <input type="checkbox"/> Foamy <input type="checkbox"/> Dark Brown <input type="checkbox"/> Oily Sheen <input type="checkbox"/> Reddish <input type="checkbox"/> Green <input type="checkbox"/> Other _____	Water Odor <input checked="" type="checkbox"/> None <input type="checkbox"/> Sewage <input type="checkbox"/> Chlorine <input type="checkbox"/> Fishy <input type="checkbox"/> Rotten Eggs <input type="checkbox"/> Petroleum <input type="checkbox"/> Other _____	Turbidity <input checked="" type="checkbox"/> Clear <input checked="" type="checkbox"/> Slight <input type="checkbox"/> Medium <input type="checkbox"/> Heavy

Canopy Cover 0% 1-5% 6-25% 26-50% 51-75% 76-100%
Algal Growth 0% 1-5% 6-25% 26-50% 51-75% 76-100%
Substrate Siltation Coverage: Estimate the percentage of the stream bed that is covered by silt.
 0% 1-5% 6-25% 26-50% 51-75% 76-100%

Are there Submerged Aquatic Plants? (Yes) No
If yes, what types? GRASSES
List the types of riparian (stream side) vegetation present at the site. TREES, GRASSES

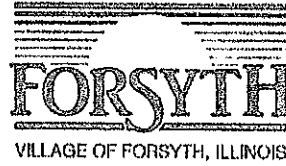
Bottom Substrate: Using the percent codes below, record the percentage of each of the materials that make up the stream bottom by writing the percent code letter in the blank next to the bottom substrate type. If the substrate is not present at the site, write letter A in the blank.

Percent cover codes: A = 0% B = 1-5% C = 6-25% D = 26-50% E = 51-75% F = 76-100%

<u>A</u> Bedrock	<u>A</u> Cobble (2.5 in – 10 in)	<u>D</u> Sand (<0.1 in)
<u>A</u> Boulder (> 10 in)	<u>A</u> Gravel (0.1 in – 2.5 in)	<u>D</u> Silt
<u>B</u> Hard Pan Clay	_____ Other _____	







OUTFALL STRUCTURES

Date: 6-9-20

Time: 1:40 pm

Name of Inspector: LSW

Location: MAW PAIL

Weather: CLOUDY/RAIN

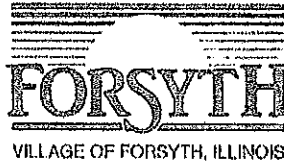
Weather Past 48 Hours: SUNNY/WARM

Temperature: 77

Water Appearance: CLEAR

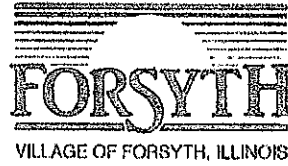
Water Odor: NONE

Turbidity: NONE



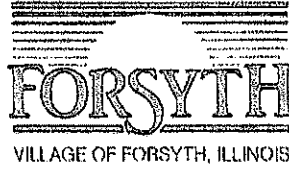
OUTFALL STRUCTURES

Date: 6-9-20
Time: 1:25 PM
Name of Inspector: LMM
Location: MARKET STREET
Weather: CLOUDY - RAIN
Weather Past 48 Hours: SUNNY / WARM
Temperature: 77
Water Appearance: CLEAR
Water Odor: NONE
Turbidity: NONE



OUTFALL STRUCTURES

Date: 6-9-20
Time: 1PM
Name of Inspector: LMM
Location: TIMBER & MC DONALD
Weather: CLOUDY - RAIN
Weather Past 48 Hours: SUNNY / WARM
Temperature: 77
Water Appearance: CLEAR
Water Odor: NONE
Turbidity: NONE



OUTFALL STRUCTURES

Date: 8-17-20

Time: 9:05 AM

Name of Inspector: W.M.N.

Location: TRUBEL + Mc DONALD

Weather: SUNNY

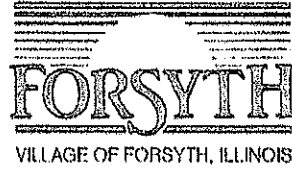
Weather Past 48 Hours: SUNNY

Temperature: 73

Water Appearance: CLEAR LOW FLOW

Water Odor: NONE

Turbidity: SLIGHT / CLEAR



OUTFALL STRUCTURES

Date: 8-17-20

Time: 8:44 am

Name of Inspector: *UW*

Location: *MAYNARD PARK*

Weather: *SUNNY*

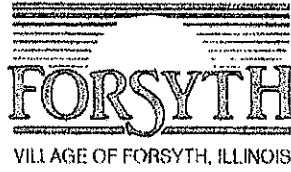
Weather Past 48 Hours: *SUNNY*

Temperature: *71*

Water Appearance: *CLEAR / Low flow*

Water Odor: *NONE*

Turbidity: *CLEAR*



OUTFALL STRUCTURES

Date: 8-17-20

Time: 8:30am

Name of Inspector: LIND

Location: MARKET STREET

Weather: SUNNY

Weather Past 48 Hours: SUNNY

Temperature: 71

Water Appearance: CLEAR w/ MOSS, GRASSES. / LOW FLOW

Water Odor: NONE

Turbidity: CLEAR - SOME MOSS



STEVENS CREEK AFTER RAINFALL EVENT INSPECTION REPORT

Name of Inspector: LIAM SUMMERS

Date: 4-29-20

Rainfall Event: 4" RAIN

Water appearance: MUDDY

Water flow: OUT OF BANKS

Location of inspection: COUNTY RD + HUNDLY

Comments: VERY SWIFT + OUT OF BANKS - OVER TRAIL + WALK BRIDGE



STEVENS CREEK AFTER RAINFALL EVENT INSPECTION REPORT

Name of Inspector: LIMM SUMMERS

Date: 4-29-20

Rainfall Event: 4" RAIN

Water appearance: MUDDY

Water flow: OUT OF BANKS

Location of inspection: W. WENON RD BRIDGE

Comments: VERY SWIFT - OUT OF BANKS -

OVER FLOWING AT OAKLAND RD. BEHIND GOLF COURSE -



Detention Basin Inspection Form

Inspection Date: 3-23-21 Time: _____

Location: 230 LUCILLE - RESIDENCE INN

Type: Residential _____ Commercial _____

Checklist:

- Inlets – clear, no erosion
- Outlets – clear, no erosion
- Adequate vegetative cover
- Signs of erosion or damage
- Removal of silt, litter, landscape waste, etc.
- Maintenance of landscaping – grass mowed, trees, and brush removed
- Sedimentation

_____ In compliance at time of inspection

X Out of compliance at time of inspection

Reasons for out of compliance:

NEED TO REMOVE CAT TAILS FROM AROUND
OUTLET PIPE - CATCH BASIN -

LIAN + DARIN

Detention Basin Inspection Form

Inspection Date: 3-23-21 Time: 10:13 AM

Location: 133 BARNETT AVE. FORSYTH COMMONS

Type: Residential _____ Commercial X

Checklist:

- Inlets – clear, no erosion
- Outlets – clear, no erosion
- Adequate vegetative cover
- Signs of erosion or damage
- Removal of silt, litter, landscape waste, etc.
- Maintenance of landscaping – grass mowed, trees, and brush removed
- Sedimentation

X In compliance at time of inspection

_____ Out of compliance at time of inspection

Reasons for out of compliance:

LWN + DASH

Detention Basin Inspection Form

Inspection Date: 3-23-21 Time: 10:20 A

Location: 1260 RT. 51 NE 91 PLAZA

Type: Residential _____ Commercial X

Checklist:

- Inlets – clear, no erosion
- Outlets – clear, no erosion
- Adequate vegetative cover
- Signs of erosion or damage
- Removal of silt, litter, landscape waste, etc.
- Maintenance of landscaping – grass mowed, trees, and brush removed
- Sedimentation

X In compliance at time of inspection

_____ Out of compliance at time of inspection

Reasons for out of compliance:

NEED TO REMOVE PLASTIC FROM OUTLET AREA

LCMN + DARRIN

Detention Basin Inspection Form

Inspection Date: 3-23-21 Time: _____

Location: 138 LUCILLE AVE ALLOWABLE DEVIATIONS

Type: Residential _____ Commercial X

Checklist:

- Inlets – clear, no erosion
- Outlets – clear, no erosion
- Adequate vegetative cover
- Signs of erosion or damage
- Removal of silt, litter, landscape waste, etc.
- Maintenance of landscaping – grass mowed, trees, and brush removed
- Sedimentation

X In compliance at time of inspection

_____ Out of compliance at time of inspection

Reasons for out of compliance:

LINA + DARIN

Detention Basin Inspection Form

Inspection Date: 3/23/21 Time: _____

Location: 338 MARION AVE EXTENDED LIVING. PATIO AREA

Type: Residential _____ Commercial X

Checklist:

- Inlets – clear, no erosion
- Outlets – clear, no erosion
- Adequate vegetative cover
- Signs of erosion or damage
- Removal of silt, litter, landscape waste, etc.
- Maintenance of landscaping – grass mowed, trees, and brush removed
- Sedimentation

X In compliance at time of inspection

_____ Out of compliance at time of inspection

Reasons for out of compliance:

NEED TO REMOVE EROSION CONTROL FROM AROUND
CATCH BASIN -

CIVIL + DRAIN

Detention Basin Inspection Form

Inspection Date: 3-23-21 Time: _____

Location: EAGLE RIDGE SUB DIVISION

Type: Residential X Commercial _____

Checklist:

- Inlets – clear, no erosion
- Outlets – clear, no erosion
- Adequate vegetative cover
- Signs of erosion or damage
- Removal of silt, litter, landscape waste, etc.
- Maintenance of landscaping – grass mowed, trees, and brush removed
- Sedimentation

X In compliance at time of inspection

_____ Out of compliance at time of inspection

Reasons for out of compliance:

Chris + DARIN

Detention Basin Inspection Form

Inspection Date: 3-23-21 Time: _____

Location: 165 WEAVER RD HICKORY POINT BANK

Type: Residential _____ Commercial X

Checklist:

- Inlets – clear, no erosion
- Outlets – clear, no erosion
- Adequate vegetative cover
- Signs of erosion or damage
- Removal of silt, litter, landscape waste, etc.
- Maintenance of landscaping – grass mowed, trees, and brush removed
- Sedimentation

X In compliance at time of inspection

_____ Out of compliance at time of inspection

Reasons for out of compliance:

LOAN & DARRIN

Detention Basin Inspection Form

Inspection Date: 3-23-21 Time: _____

Location: 535 MARION KIDS-N-FITNESS

Type: Residential _____ Commercial

Checklist:

- Inlets – clear, no erosion
- Outlets – clear, no erosion
- Adequate vegetative cover
- Signs of erosion or damage
- Removal of silt, litter, landscape waste, etc.
- Maintenance of landscaping – grass mowed, trees, and brush removed
- Sedimentation

In compliance at time of inspection

_____ Out of compliance at time of inspection

Reasons for out of compliance:

SMALL AREA OF NO GRASS-

ZIMM + DARRIN

