

KAKKU MASTER CONTROLLERS

SERIES MSS

SPECIAL FEATURES

- Provided with Silver Alloy contact tips suitable for heavy duty operation.
- The contacts operate with wiping action to prevent the deposition of harmful carbon on contact tips. Therefore there is a reduced need for frequent maintenance.
- The contact actuating lever is provided with rollers. The actuating cams strike against these rollers to open or close the contacts. Therefore contact block offers very high wear resistance.

- Contact terminals are easily approachable for convenient wiring.
- The master controllers are designed to operate reliably even under vibratory conditions.
- Sturdy construction in sheet steel enclosures.

TECHNICAL DATA

Ambient Temperature	:	Upto 55°C
Degree of Protection	:	IP-41 (or better)
Max. No. of operating positions	:	5 - 0 - 5

RATINGS

Rated Voltage	Rated Thermal Current	Making Current	Breaking Current L / R <0.01Sec. (Amps.)			
			D.C.			Upto 500V AC
			110V	220V	440V	
Upto 500V AC	40A	50A	0.5	0.3	0.1	5

SELECTION CHART

Type	Max. No. of Contacts
MSS - 08 - *	08
MSS - 12 - *	12
MSS - 16 - *	16

* Suffix code S for stayput and R for spring return version.

SERIES MSS
Dimensions (mm)

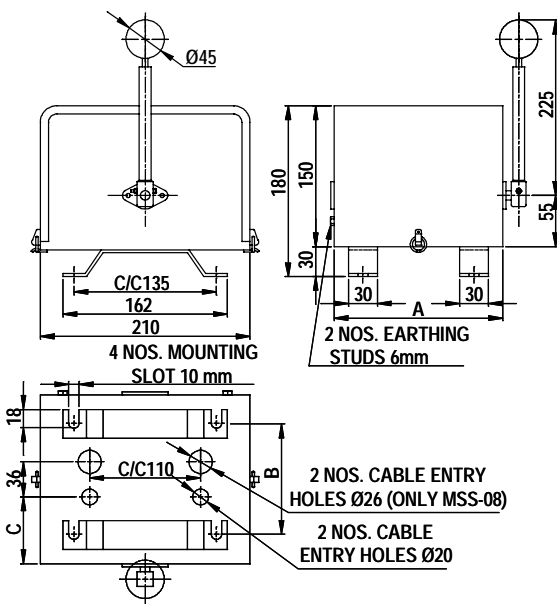


Fig 1 : MASTER CONTROLLER

Type	Dimensions in (mm)		
	A	B	C
MSS - 04	125	75	62.5
MSS - 08	175	105	69.5

No. of Cable Entries		
Type	Ø20	Ø26
MSS - 04	02	
MSS - 08	02	02

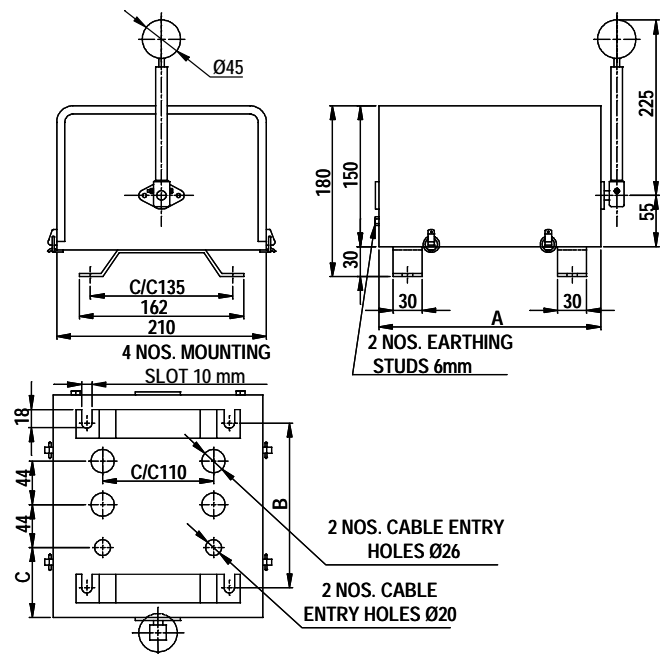


Fig 2 : MASTER CONTROLLER

Type	Dimensions in (mm)		
	A	B	C
MSS - 12	225	165	68.5
MSS - 16	275	215	71.5

No. of Cable Entries		
Type	Ø20	Ø26
MSS - 12	02	04
MSS - 16	02	06

Product improvement is a continuous process at KAKKU. Hence data given in this catalogue is subject to revision without notice.

Electronic & Power Control Co.

(AN ENTERPRISE OF KAKKU E & P CONTROL (P) LTD.)

1, Industrial Estate, Bhilai 490 026,
(Chhattisgarh) INDIA.



Symbol Of Reliability

Tel : 91-788-2382610, 2382297

Fax : 91-788-2381797, 2321836

E-mail : kakku_bhilai@yahoo.com