

## KAKKU JOY STICK MASTER CONTROLLERS SERIES MSC – 5700

### SPECIAL FEATURES

- Provided with Silver Alloy contact tips suitable for heavy-duty operation.
- The contacts operate with wiping action to prevent the deposition of harmful carbon on contact tips. Therefore there is a reduced need for frequent maintenance.
- The contact-actuating lever is provided with rollers. The actuating cams strike against these rollers to open or close the contacts. Therefore contact block offers very high wear resistance.
- Contact terminals are easily approachable for convenient wiring.
- The joystick controllers are designed to operate reliably even under vibratory conditions.
- Smooth & fatigue less operation.
- Available in Single or universal operation (dual controller).

### APPLICATION

KAKKU Joystick Master Controllers Series MSC-5700 are used for control of electric drives of EOT cranes, hoists, transfer cars, Grab-buckets, unloaders, steel mills, conveyors and other heavy material handling equipment.

### SELECTION CHART

Type	Max. No. of Contacts
MSC-5700 / 8	Upto 8
MSC-5700 / 12	Upto 12
MSC-5700 / 14	Upto 14
MSC-5700 / 16	Upto 16
MSC-5700 / 24	Upto 24

- Add suffix "D" for universal / dual controller.
- Add suffix "SR" for spring return.

### TECHNICAL DATA

Ambient Temperature	: 55°C.
Mounting Arrangement	: Suitable for mounting on control desk / panel
Terminals	: Suitable for conductor size 2.5mm <sup>2</sup> .
Operation	: Stayput./ Spring return
Max. No. of operating positions.	: Upto 5 – 0 – 5
Max. No. of contacts per circuit	
(a) Single Master Controller	: Upto 24
(b) Dual Master Controller	: Upto 16

### RATINGS

Rated Voltage AC	: Upto 500V
Continuous Current	: 10A
Making Current (Upto 500V AC)	: 50A
Rated Thermal current	: 40A

### OPTIONAL EXTRAS

- Enclosure as per IP –41/54
- Spring return of handle to neutral.
- Dead man handle with contact
- Special type of handle. (furnish drawing)

### ORDERING INFORMATION

- Give KAKKU type.
- No. of operating positions or steps.
- Contact sequence chart indicating opening & closing of each contact in every position of the controller.
- Name plate details of operation i.e. 'HOIST – LOWER', 'FORWARD – REVERSE' etc.
- Single or universal operation (dual controller)
- Specify optional extras if any.

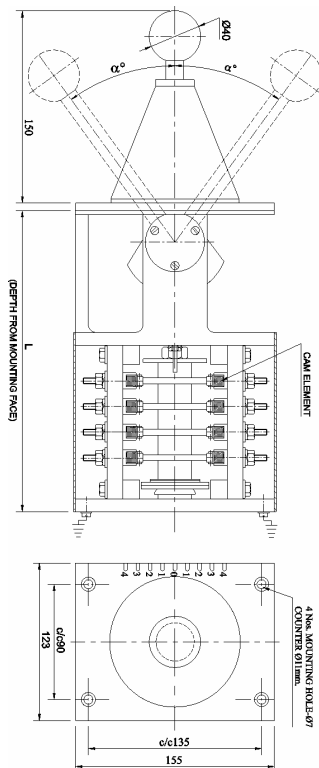
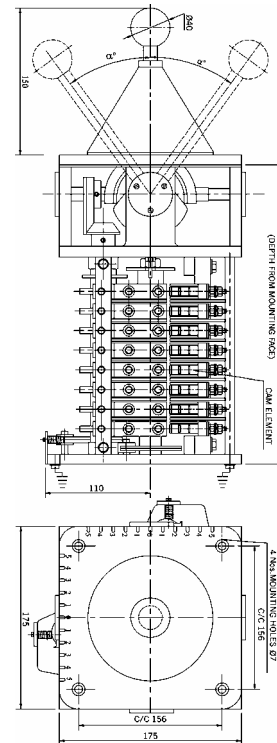
*Product improvement is a continuous process at KAKKU. Hence data given in this catalogue is subject to revision without notice.*



*symbol Of Reliability*

Dual Axis / Universal Joystick Controller		
Type	Dimension (L) in MM	No. of Contacts in each axis
MSC-5700 D8/8	302	8
MSC-5700 D10/10	352	10
MSC-5700 D12/12	402	12

The Master Controllers can be provided with Dead man push button on the top of the operating lever as an optional feature. For dead man contact add suffix "X1 for 1NO+1NC contact & X2 for 2 NO+2NC contact.



Single Axis Joystick Controller		
Type	Dimension (L) in MM	No. of Contacts in each axis
MSC-5700 / 8 S	212	8
MSC-5700 / 12 S	252	12
MSC-5700 / 16 S	292	16

The Master Controllers can be provided with Dead man push button on the top of the operating lever as an optional feature. For dead man contact add suffix "X1 for 1NO+1NC contact & X2 for 2 NO+2NC contact.

*Product improvement is a continuous process at KAKKU. Hence data given in this catalogue is subject to revision without notice.*

**Electronic & Power Control Co.**

(AN ENTERPRISE OF KAKKU E & P CONTROL (P) LTD.)  
1, Industrial Estate, Bhilai 490 026,  
(Chhattisgarh) INDIA.



symbol Of Reliability

Tel : 91-788-2382610, 2382297  
Fax : 91-788-2381797, 2321836  
E-mail : kakku\_bhilai@yahoo.com