

Losing My Religion

R.E.M

Intro:

F /// /// Am /// /// F /// /// Am /// G /// (with riff 1)

Riff 1:

	F		Am		F		Am	G
	7-5-7-5-0		7-5-7-5-0		7-5-7-5-0		7-5-7-5-0	
A								
B								

Verse:

Am /// /// Em /// /// x3 Dm /// /// G /// ///

Oh, life is bigger
It's bigger
Than you and you are not me
The lengths that I will go to
The distance in your eyes
Oh no, I've said too much
I set it up

Pre-Chorus:

Am /// /// Em /// /// x3 Dm /// /// G /// ///

That's me in the corner
That's me in the spotlight
Losing my religion
Trying to keep up with you
And I don't know if I can do it
Oh no, I've said too much
I haven't said enough

Chorus:

F /// /// Am /// /// F /// /// Am /// G /// (with riff 1)

I thought that I heard you laughing
I thought that I heard you sing
I think I thought I saw you try

Verse:

Am /// /// Em /// /// x3 Dm /// /// G /// ///

Every whisper
Of every waking hour
I'm choosing my confessions
Trying to keep an eye on you
Like a hurt lost and blinded fool, fool
Oh no, I've said too much
I set it up

Verse:

Am /// /// Em /// /// x3 Dm /// /// G /// ///

Consider this
Consider this
The hint of the century
Consider this
The slip
That brought me to my knees
Failed
What if all these fantasies
Come flailing around
Now I've said too much

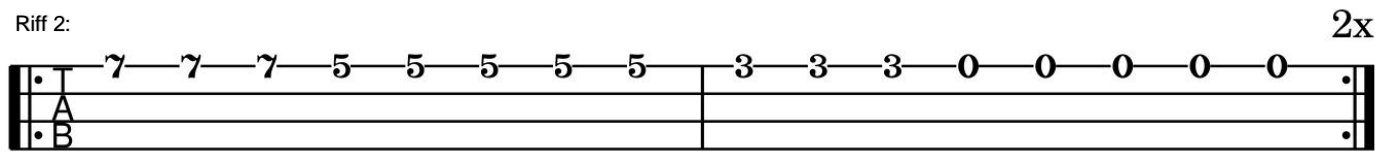
Chorus:

F /// /// Am /// /// F /// /// Am /// G /// (with riff 1)

Bridge:

Am /// G /// F /// G /// (with riff 2)

Riff 2:



C /// Dm /// x2 (with riff 2)

But that was just a dream
That was just a dream

Pre-Chorus:

Am /// /// Em /// /// x3 Dm /// /// G /// ///

Chorus:

F /// /// Am /// /// F /// /// Am /// /// (with riff 1)

Post-Chorus:

F /// /// Am /// /// F /// /// Am /// G /// (with riff 1)

But that was just a dream
Try, cry
Fly, try
That was just a dream, just a dream, just a dream

Ourto:

Am /// /// Am /// /// Am /// /// Am /// /// Am (with Riff 3)

Riff 3:

