

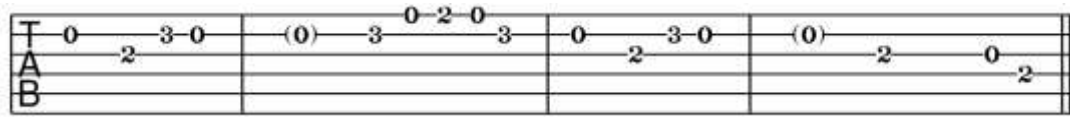
Midnight Sky

Miley Cyrus

Intro: (with Riff x2)

Em /// Bm /// C /// Am /// x2

La-la, la-la, la



Verse:

Em /// Bm /// C /// Am /// x2

Yeah, it's been a long night and the mirror's tellin' me to go home (home)
But it's been a long time since I felt this good on my own
Uh, lotta years went by with my hands tied up in your ropes
Forever and ever, no more

Pre-Chorus:

C /// D /// Em /// Bm ///

The midnight sky is the road I'm takin'
Head high up in the clouds, Oh.

Chorus:

Em /// Bm /// C /// Am /// x2

I was born to run, I don't belong to anyone, oh no
I don't need to be loved by you (by you)
Fire in my lungs, can't bite the devil on my tongue, oh no
I don't need to be loved by you

C /// D /// Em /// Bm /// x2

See my lips on her mouth, everybody's talking now, baby
Ooh, you know it's true, yeah
That I was born to run, I don't belong to anyone, oh no
I don't need to be loved by you (loved by you)

Post-Chorus: (with Riff x1)

Em /// Bm /// C /// Am ///

La-la, la-la, la

Verse:

Em /// Bm /// C /// Am /// x2

She got her hair pulled back 'cause the sweat's drippin' off of her face (her face)
Said it ain't so bad if I wanna make a couple mistakes
You should know right now that I never stay put in one place
Forever and ever, no more (no more)

Pre-chorus:

Chorus:

Bridge:

C /// D /// Em /// G /// C /// D /// Em /// B ///

Oh
I don't hide blurry eyes like you
Like you

Chorus:

Outro: (with Riff x2)

Em /// Bm /// C /// Am /// x2

La-la, la-la, la
La-la
You know it's true
You know it's true
(Loved by you)