

# Wellerman

Nathan Evans

Keyboard

## Verse

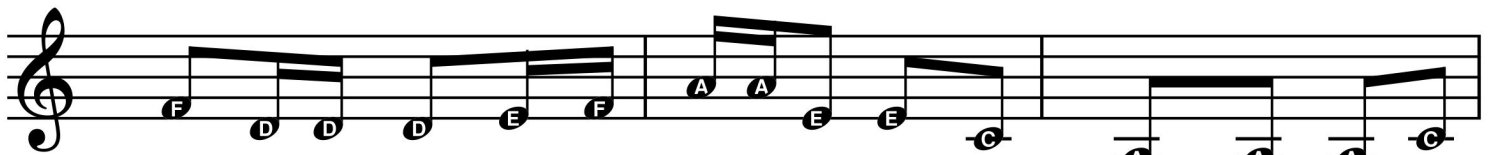
Am



There once was a ship that put to sea, the

Dm

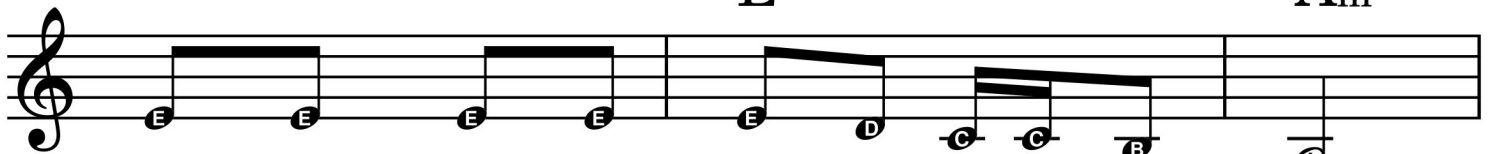
Am



name of the ship was the Bi-lly of Tea. The winds blew up, her

E<sup>7</sup>

Am



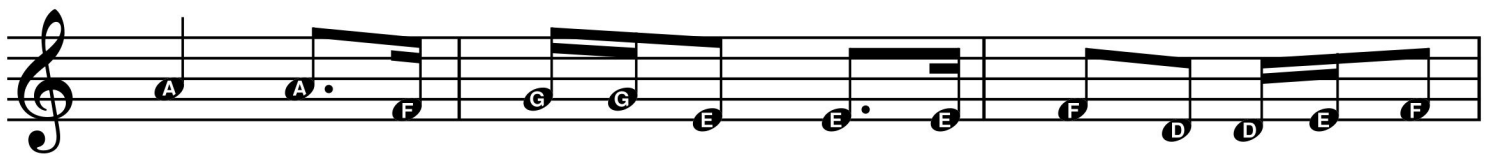
bow dipped down, Oh blow, my bu-lly boys, blow.

F

C

Dm

## Chorus



Soon may the Well-er-man come, to bring us su-gar and

Am

F

C



tea and rum. One day, when the tong-uing is done, We'll

E<sup>7</sup>

Am

*Versw*

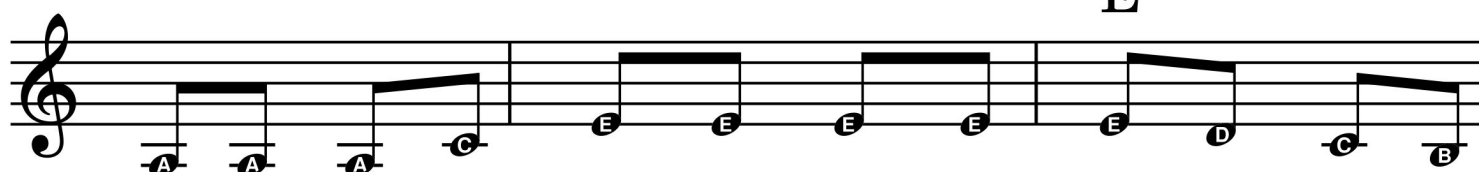
take our leave and go. She'd not been two\_\_

D<sub>m</sub>

Am



weeks from shore, when down on her a right whale bore. The

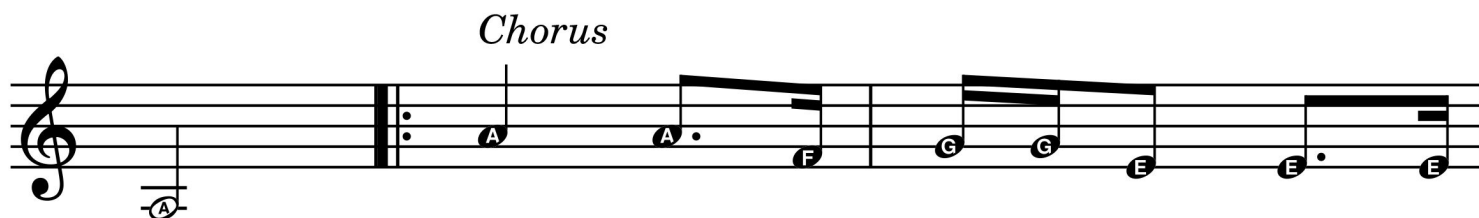
E<sup>7</sup>

Cap-tin called all hands and swore, he'd take that whale in

Am

F

C

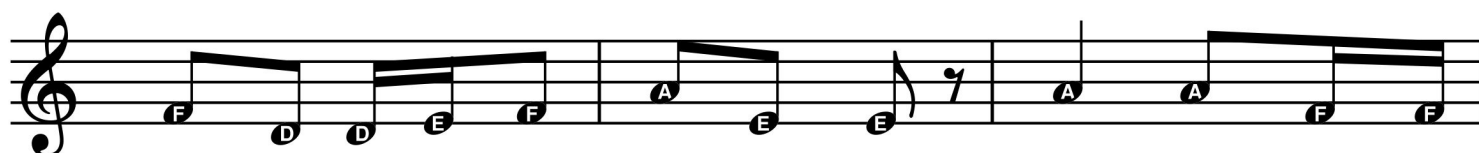


tow. Soon may the Well-er-man come, to

D<sub>m</sub>

Am

F

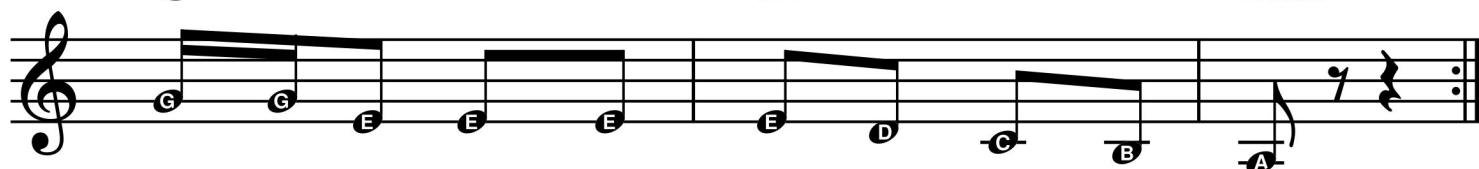


bring us su-gar and tea and rum. One day, when the

C

E<sup>7</sup>

Am



tong-uing is done, We'll take our leave and go.