

# Wanesy™ Management Center

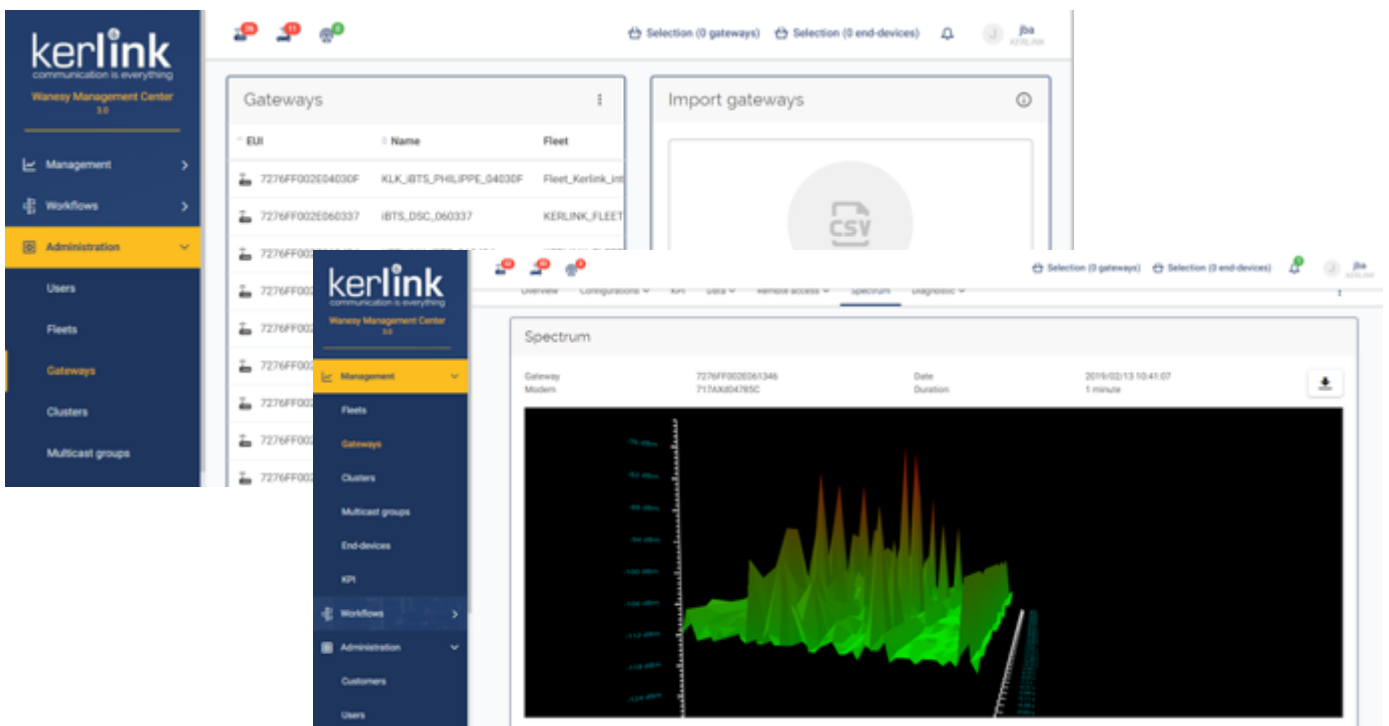
## Challenges

- Reduce Technical risks
- Reduce Operational risks
- Reduce Business risks

## Kerlink solution

- Powerful tool for Gateways, End-devices, LoRa and Backhaul Provisioning & Configuration:
  - > Unitary or Massive import via CSV
  - > LoRa channels configuration
  - > Spectrum analysis ...
- Powerful tool for Gateways, End-devices, LoRa and Backhaul Supervision & Management:
  - > Large set of KPI (Downlink, Uplink messages, CPU, RAM, temperature ...)
  - > Filtering per Gateways, End-devices, Clusters, Fleet
  - > Workflows ...
- New intuitive GUI for best usage
- Carrier Grade solution (High-availability)
- Advanced security
- Cloud or Local Storage of Data
- Easy integration with Application Servers (Via REST API +Swagger)

## End-user interface



All product specifications are subject to change without notice

# Wanesy™ Management Center

## Architecture & Components

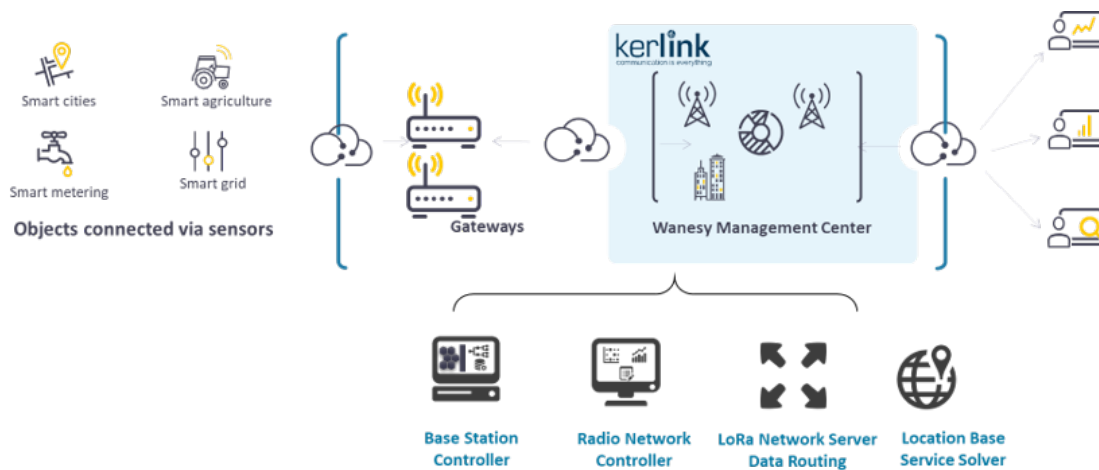
- **Wanesy™ Management Center is:**

**LNS** (LoRa Network Server) for Monitoring of performance and updating of the connected objects, payload forwarding to data router, security

+ **BSC** (Base Station Controller) for Gateways Performance, Configuration, Fault Management

+ **RNC** (Radio Network Controller) for LoRa Performance, Configuration, Fault Management

+ **GMS** (Gateway Management System) for API



## Benefits

- **Business Equity:** Export of the database if not satisfied
- Clear and simple pricing policy
- Quick deployment with prestaging
- Generic integration with KERLINK Gateways (no hidden nor additional costs)
- **Available in 3 modes:**
  - > Mutualized Saas (Standard offer)
  - > Dedicated Saas (Premium offer)
  - > « On Premises » (in Customer premises)

## Ask for your Starter Kit!