

An aerial photograph of a coastal landscape at sunset. The sky is filled with scattered, dark clouds, some of which are illuminated from below by the setting sun, creating a dramatic play of light and shadow. The sun is positioned on the right side of the frame, just above the horizon, casting a bright, golden glow across the sky and reflecting a shimmering path of light on the water's surface. The water is a deep, dark blue-grey color, contrasting with the lighter, sandy tones of the beach and the winding paths that cut through the landscape. The overall mood is serene and majestic.

Valle de las Estrellas

San Felipe, Baja California México

2026

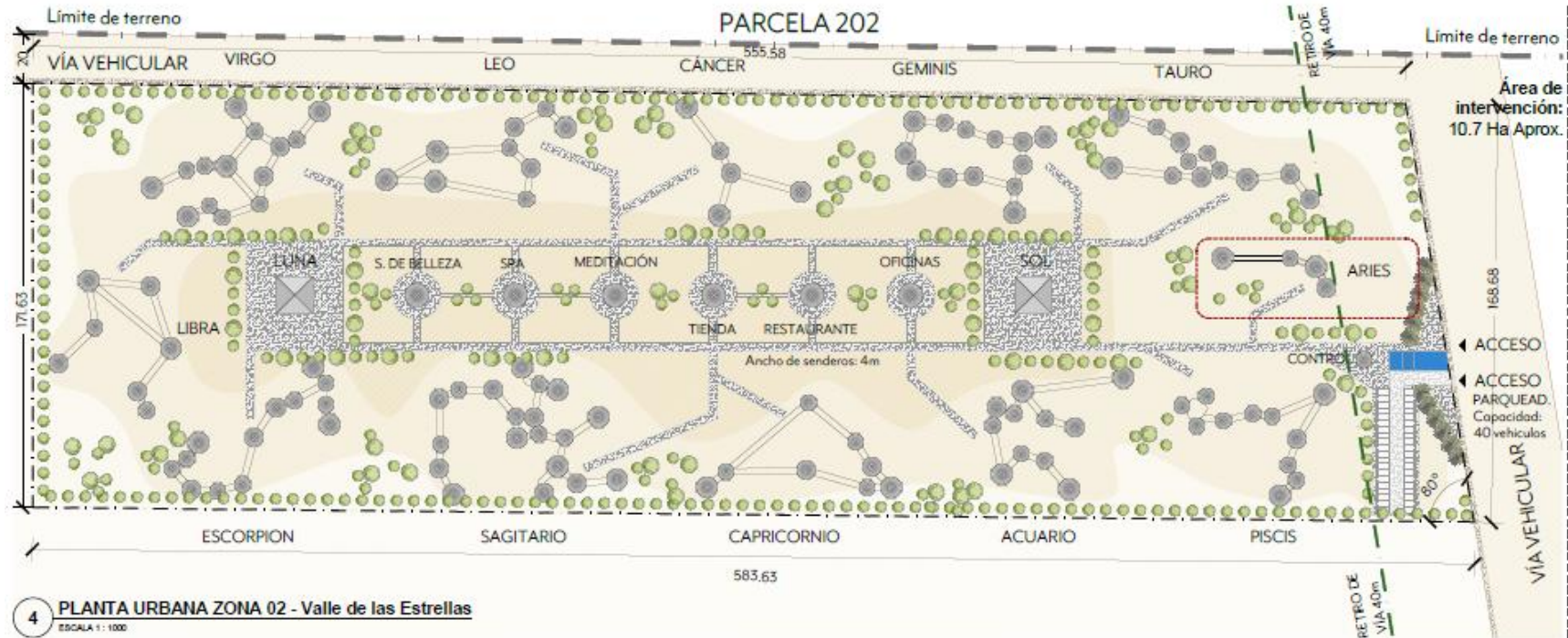
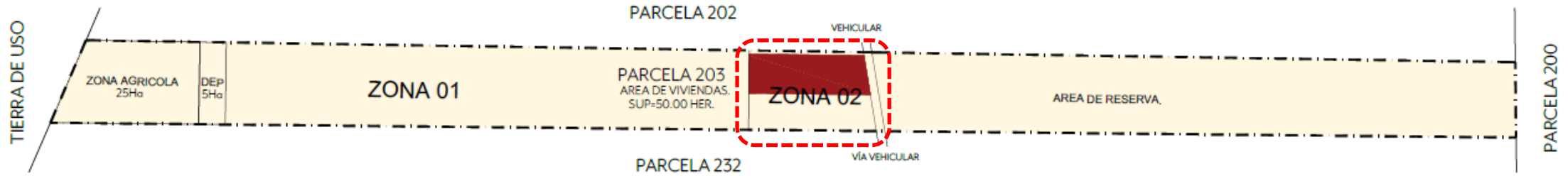
Location

<https://maps.app.goo.gl/oUfwfCys5xajqTgz9>





Vacation home area



Distances from/to the Valle de las Estrellas

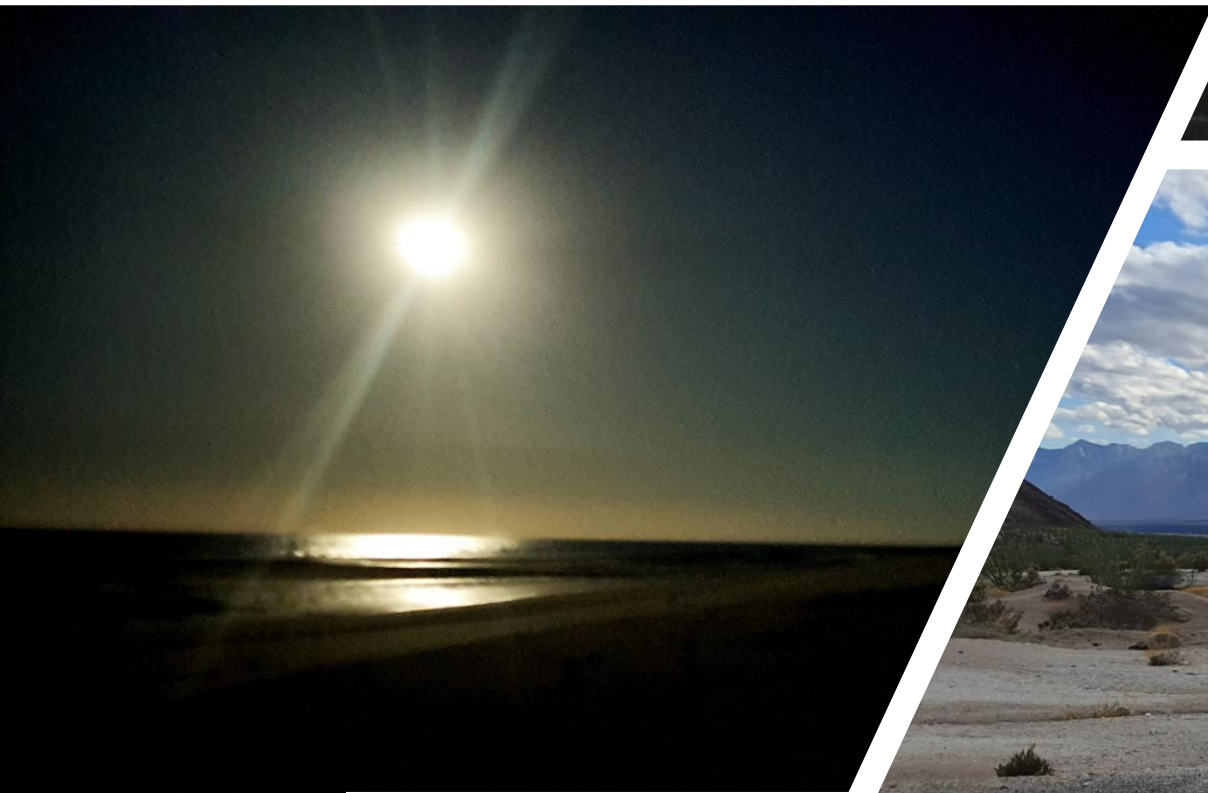
It is located in the municipality of San Felipe, Baja California 10 minutes from the San Felipe International Airport.

Located 2 hours to Mexicali on MEX-USA border, 4 hours to San Diego and 6 hours to Phoenix.

4-hour drive to Ensenada, Valle de Guadalupe and all the way south to Guerrero Negro.

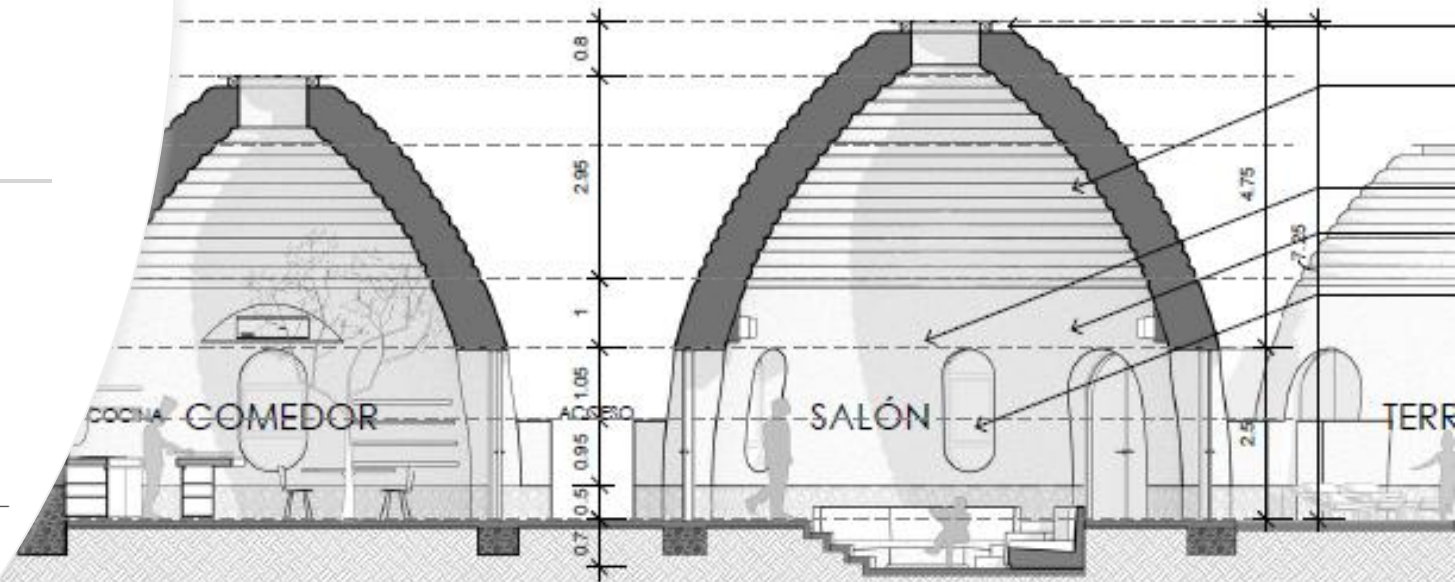
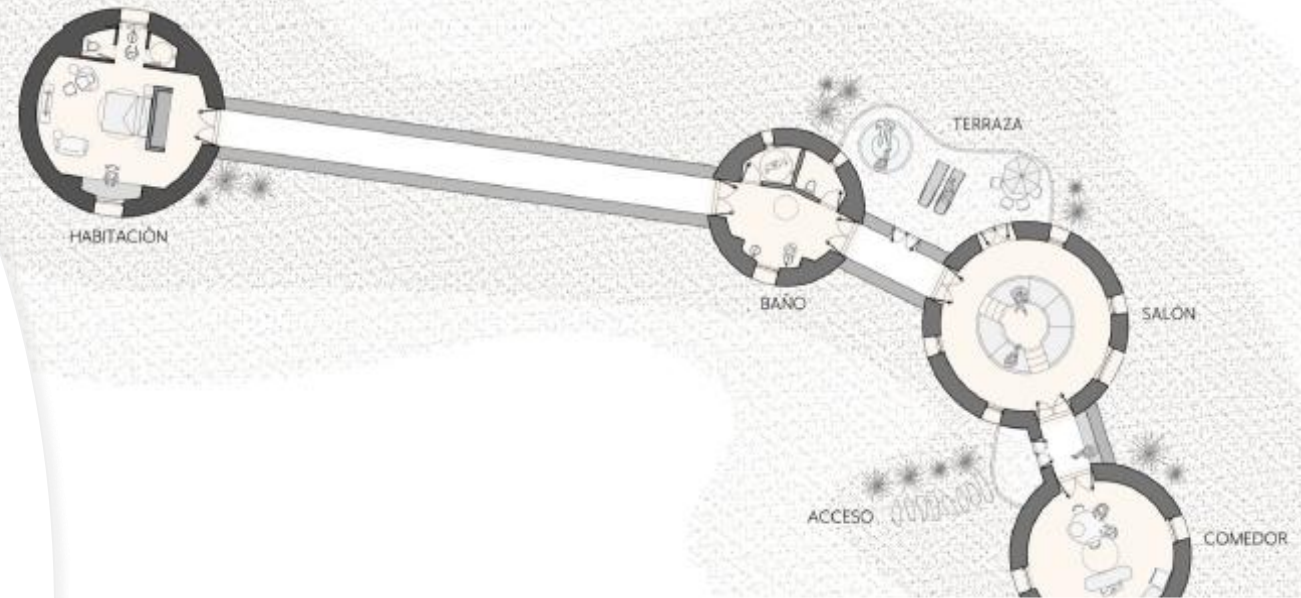
We are in a straight line facing the sea in front of Puerto Peñasco, Sonora located 90 miles away.

We are surrounded by mountains and sea: Sierra de San Pedro and the Sea of Cortez with multiple islands and natural parks to be visited.



Vacation home model

Aries





Secured investment



We are a registered company named Zoluciones.MX Red de Negocios SAS de CV.

Each Aries model EcoDome vacation rental includes:

- * Master bedroom
- * Living room, dining room and kitchen
- * Bathroom





Additional Information

- We have the land title certificate issued by the National Agrarian Registry in 2023.
- We have water available for drilling wells beneath the property and a water line crosses the lower part of the land.
- Wastewater will be stored in biodigesters. Some areas are planned for planting citrus, date, and fig trees.
- A power line already crosses the property.
- We have road access to the property.
- We have weak cell phone signal, but there is an option to install internet via SpaceX's Starlink.
- Courier service can reach in San Felipe, which has a population of 17,000. There are local convenience stores.
- Tourism options include mountain excursions in the Sierra de San Pedro or marine tourism on the Sea of Cortez.
- There is a port with a breakwater in San Felipe and aquaculture farms.
- The diversity of wildlife is extensive in both the desert and the sea. The climate is hot with occasional rain in summer.



Mes	Ene	Feb	Mar	Abr	May	Jun	Jul	Ago	Sep	Oct	Nov	Dic	Año
Temperatura máx.prom.(°C)	18	23	27	30	37	41	45	44	39	36	26	22	31
Temperatura mín.prom.(°C)	7	11	15	21	25	32	36	33	25	14	12	5	13
Precipitación (mm)	11 mm	9 mm	9 mm	4 mm	1 mm	0 mm	8 mm	18 mm	13 mm	8 mm	4 mm	13 mm	98 mm



Contact

rodrigo@zoluciones.mx