



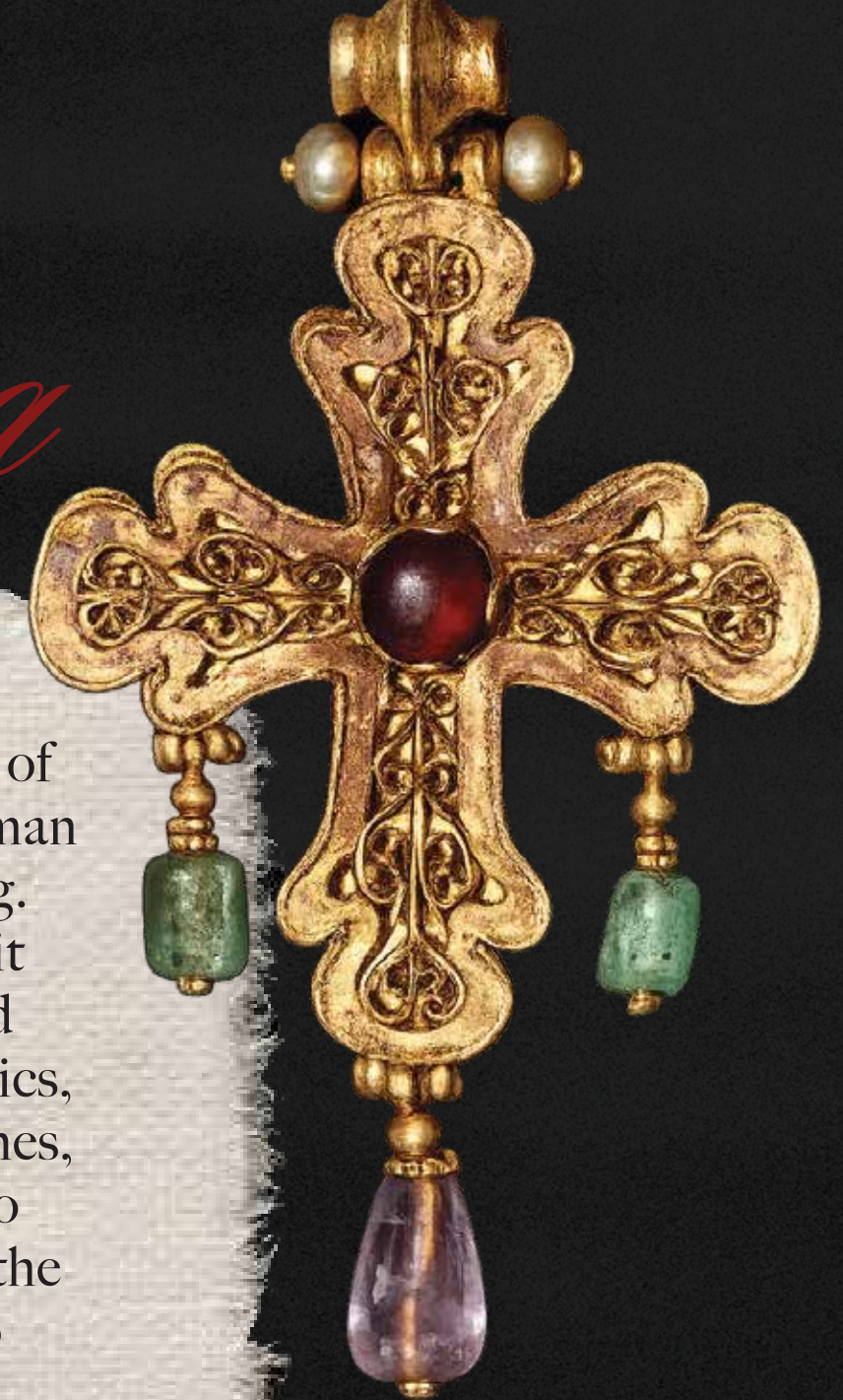
DOMUS AUREA

14



Domus Aurea

This collection is inspired by the opulence and grandeur of Byzantine Empire fashion, reinterpreted for the modern man who challenges traditional masculinity through clothing. Defined by a contrast of textures, patterns, and colors, it evokes a medieval yet contemporary sense of luxury and craftsmanship. The rich inspiration from Byzantine mosaics, known for their intricate geometric patterns and jewel tones, reflects the empire's tradition of connecting garments to religious and imperial status. Just as Byzantium blurred the lines between church and state, this collection seeks to dissolve the boundaries of gender norms in menswear, embracing fluidity while maintaining a powerful, regal presence.



Prince Justinian
(Royal-like)
Details



No division
between
Church &
State



Byzantine
empire
Mosaics

Religious/
inspired
motifs and
patterns.

* Imposing
figures

feeling of
grandeur &
luxury

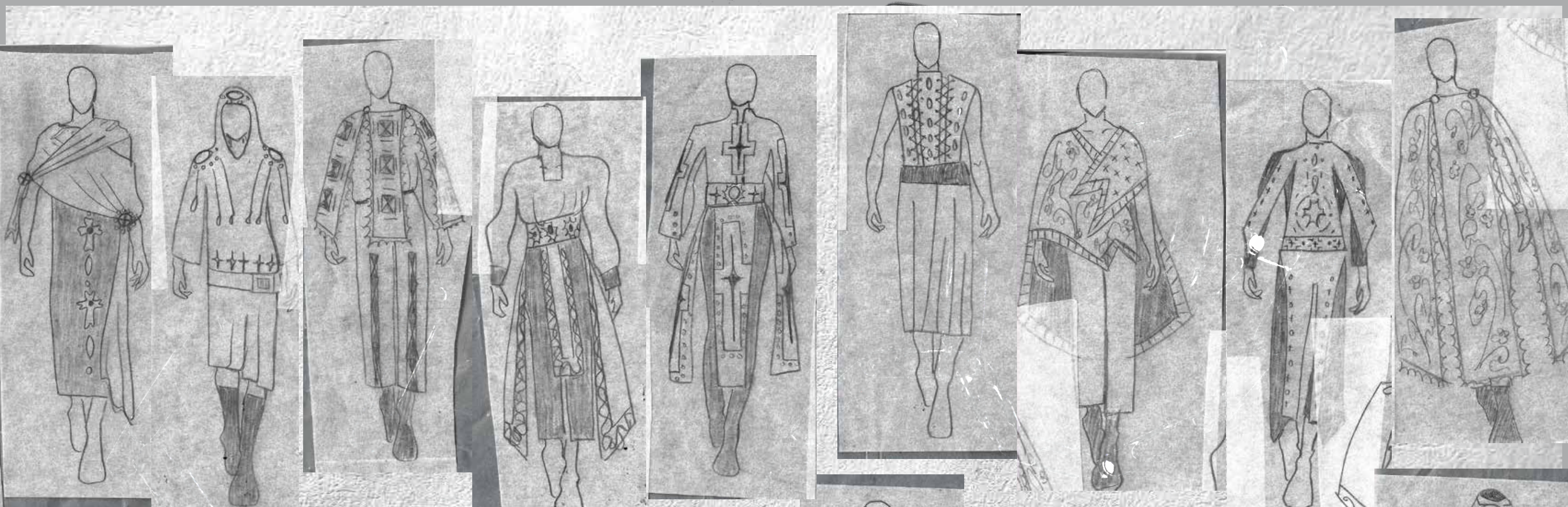
Heavily
embroidered
details.



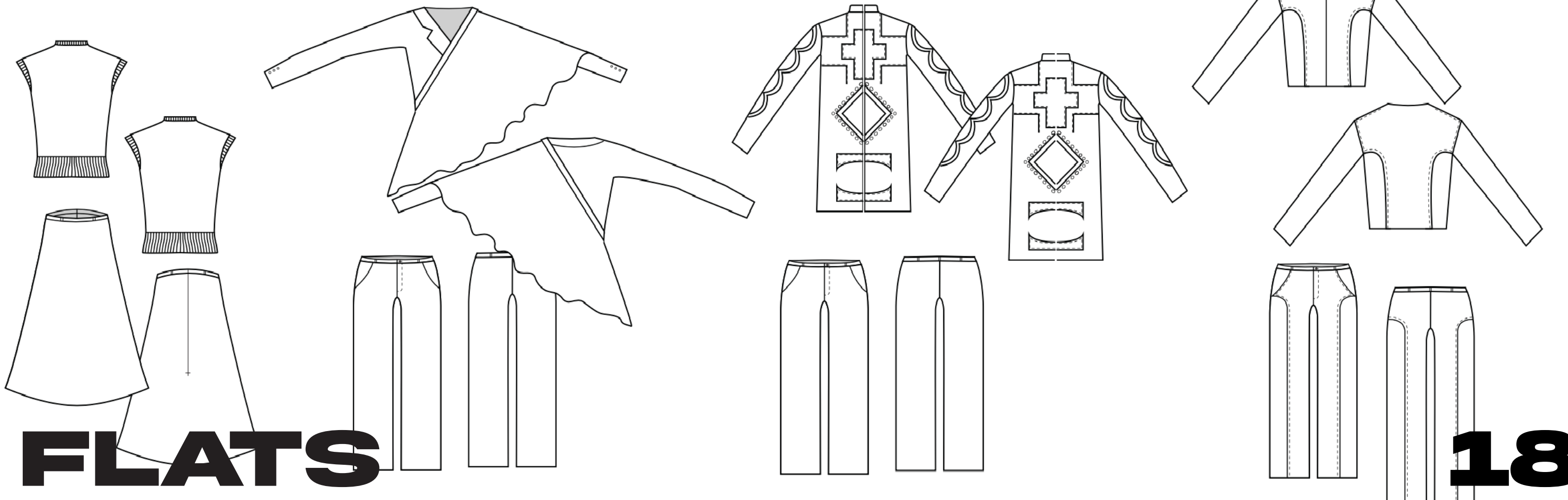
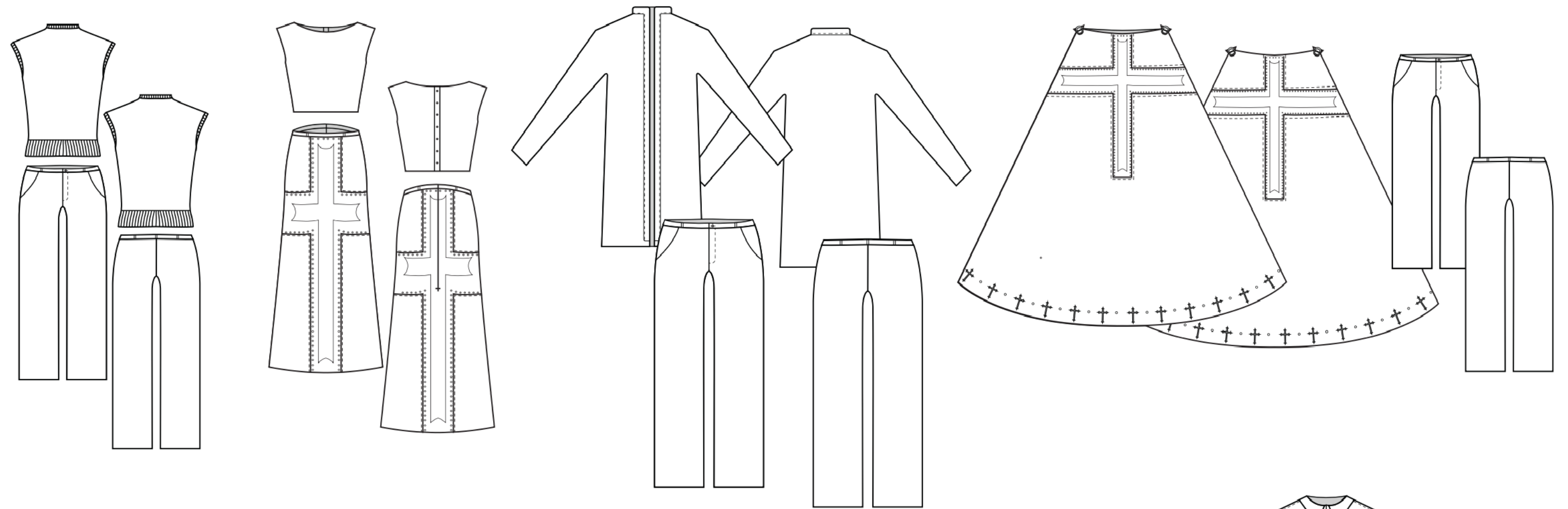
Dramatic
Shapes
&
Drapes.

Heavily
ornamented
with
jewels and
precious
stones.





**SKETCHES &
DEVELOPMENT**



FLATS

18



ILLUSTRATIONS



ILLUSTRATIONS



DW

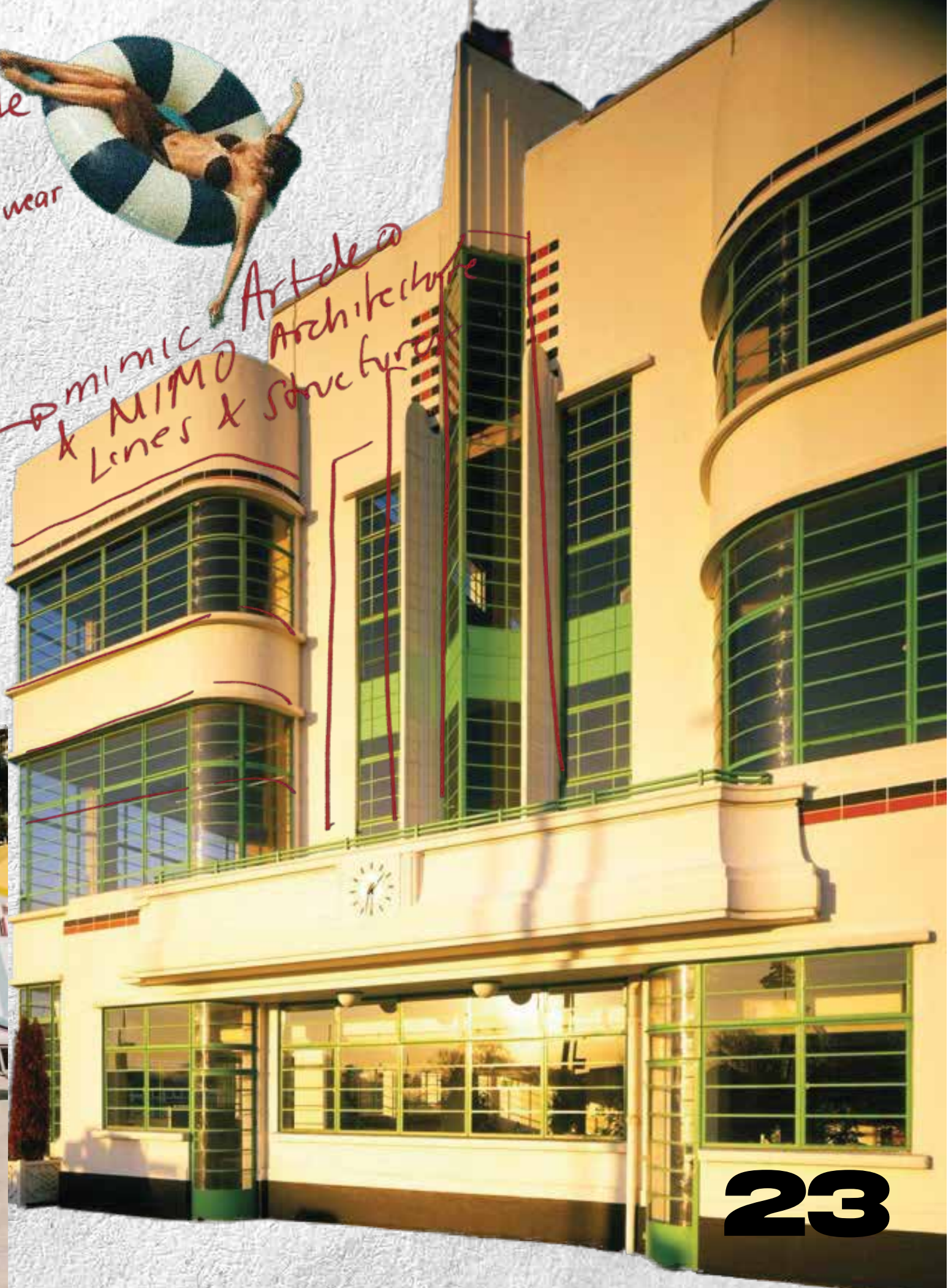
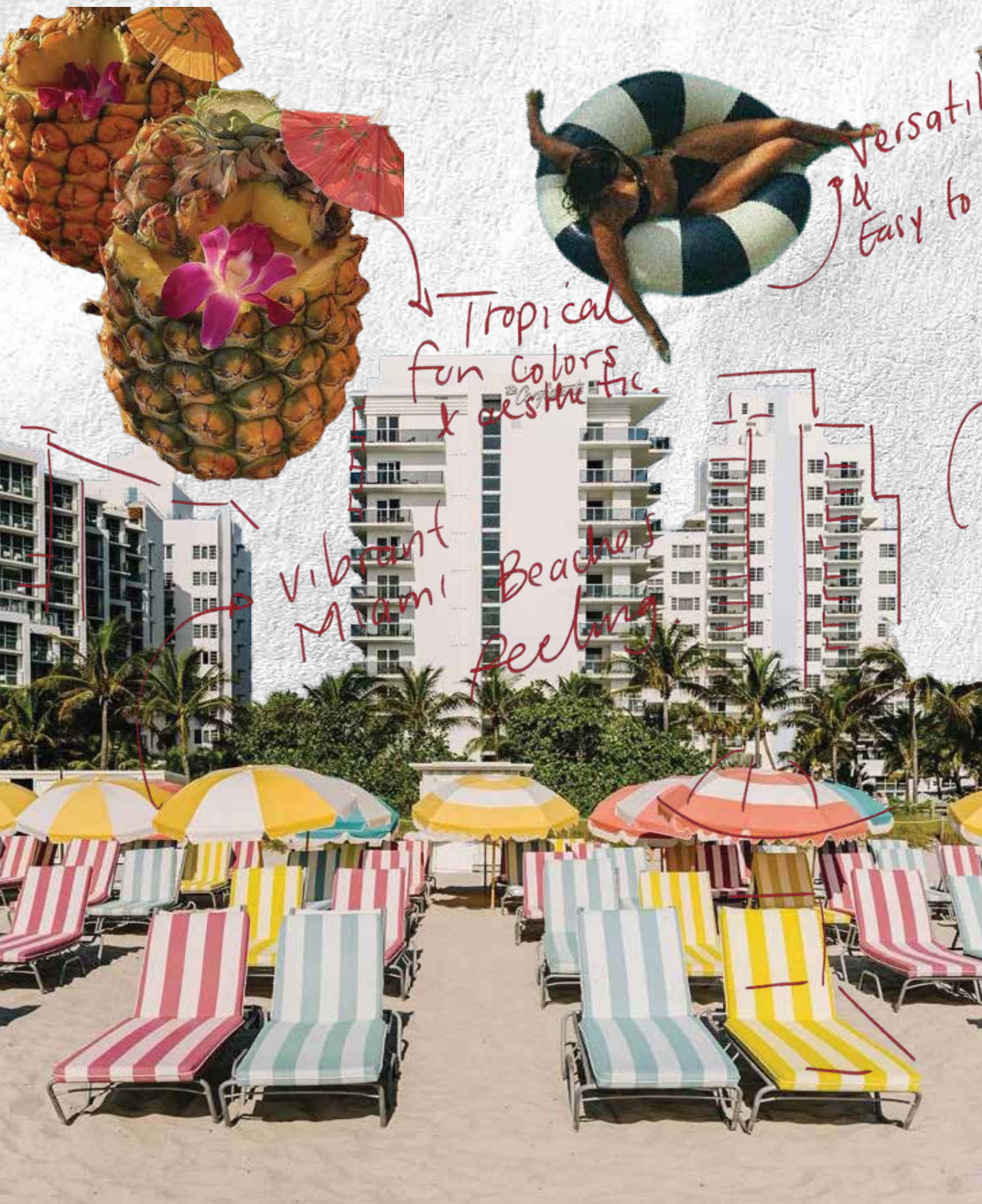
DECO WAVE

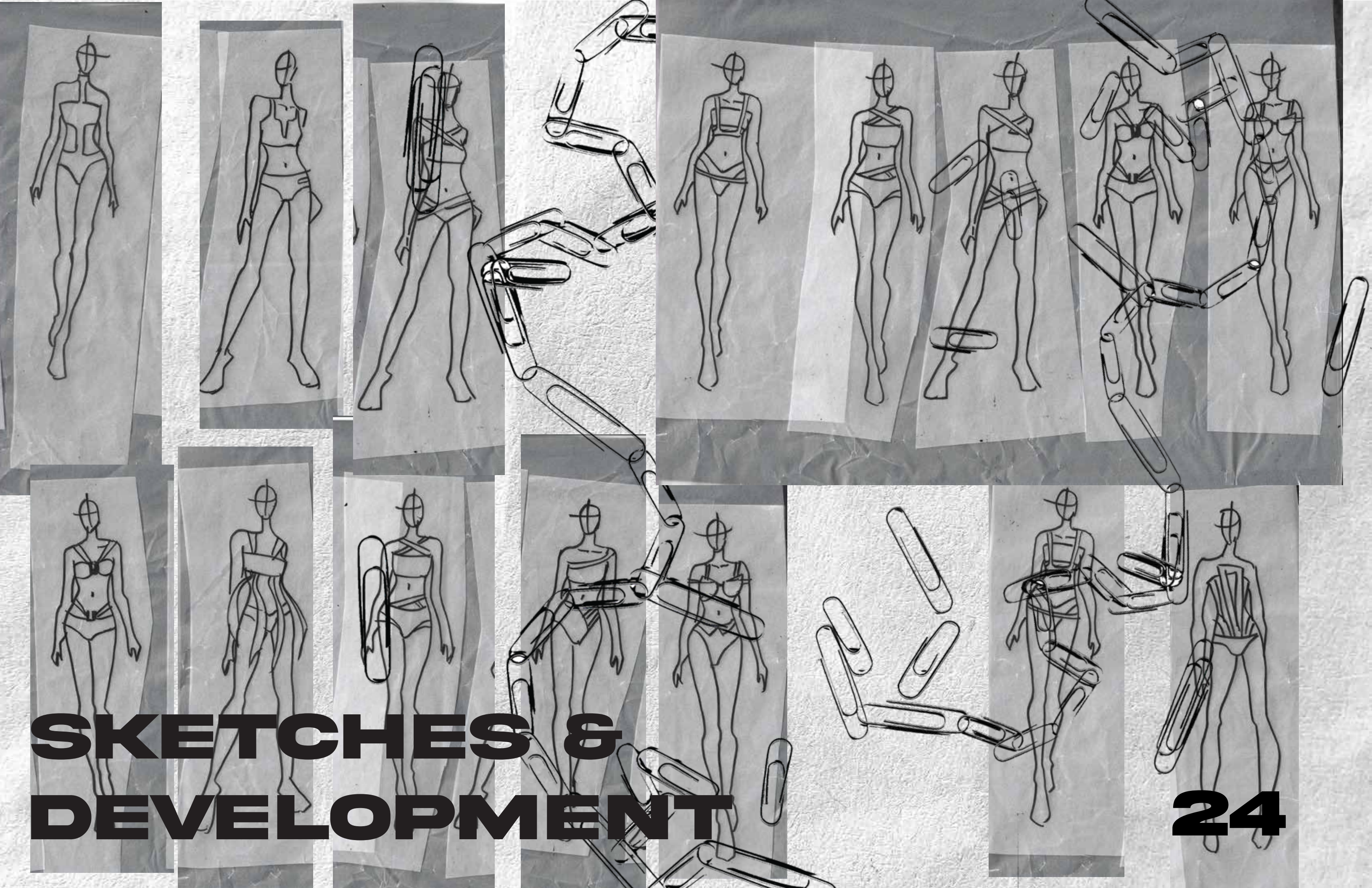
21



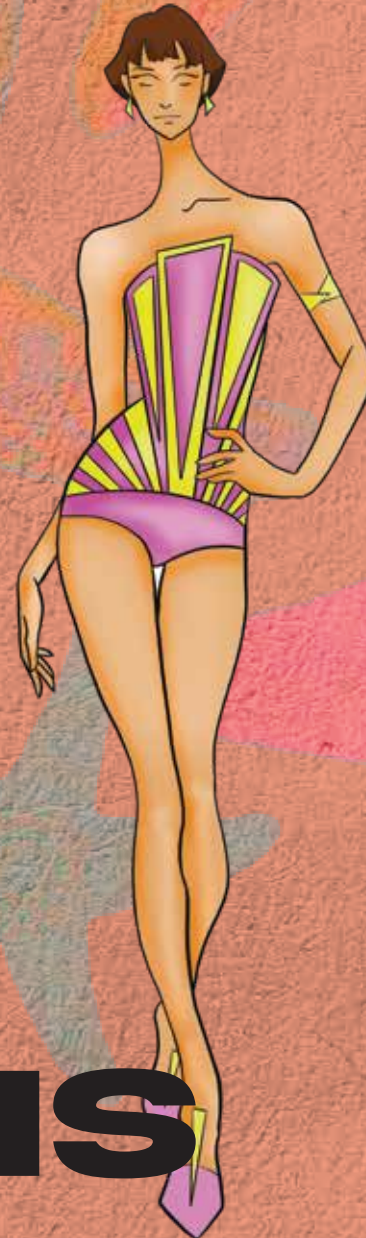
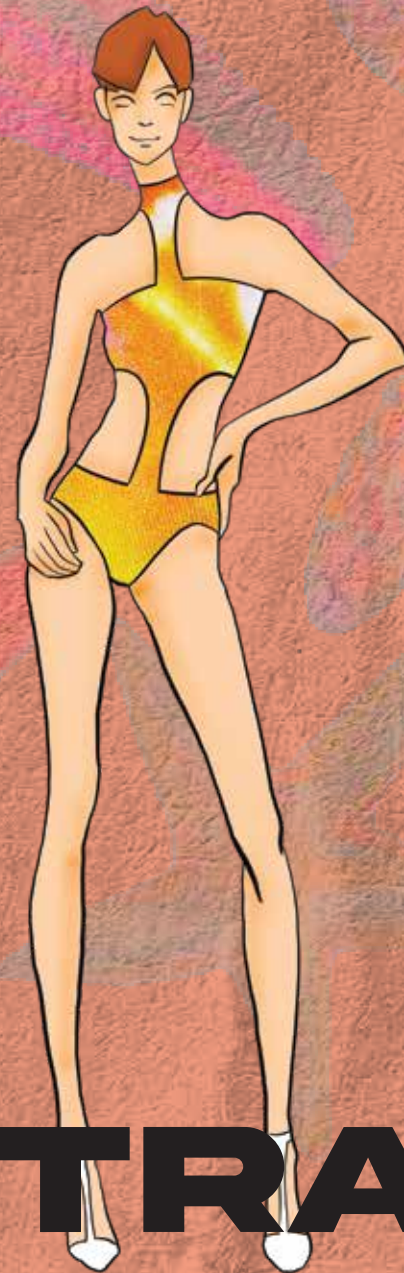
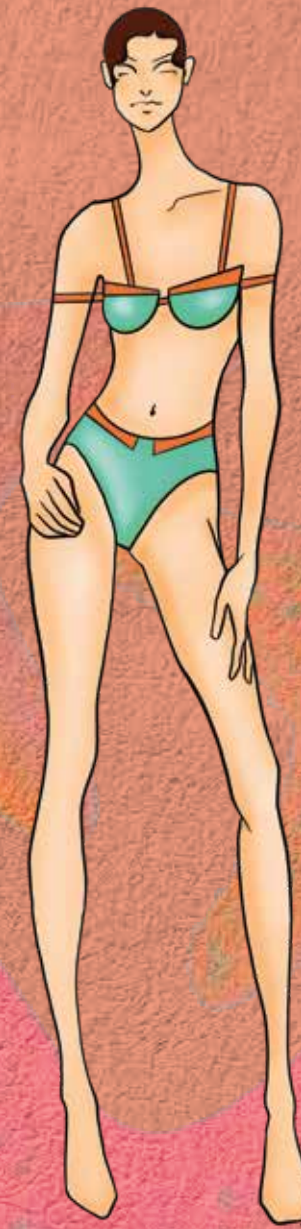
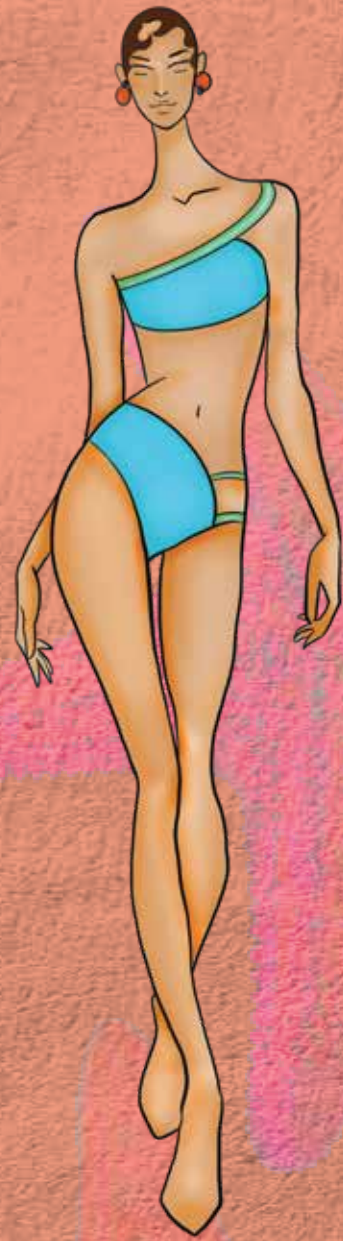
Deco Wave

This swimwear collection draws inspiration from Miami's iconic Art Deco and MiMo (Miami Modern) architecture, translating the city's vibrant visual language into bold, wearable design. Defined by clean lines, geometric shapes, and dynamic color blocking, each piece reflects the symmetry and structure found in these architectural styles while embracing the energy of Miami's coastal culture. Bright, saturated hues are paired with linear detailing that mimics façade patterns and structural contours, creating a striking yet balanced aesthetic.





**SKETCHES &
DEVELOPMENT**



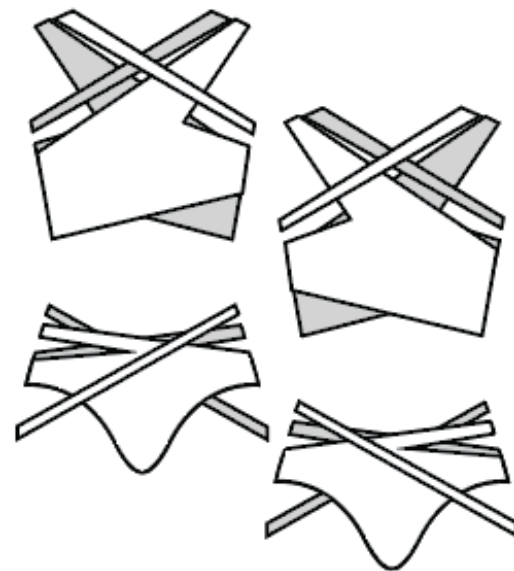
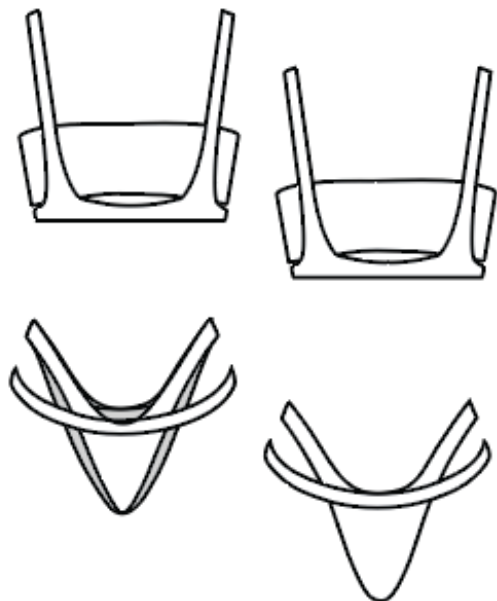
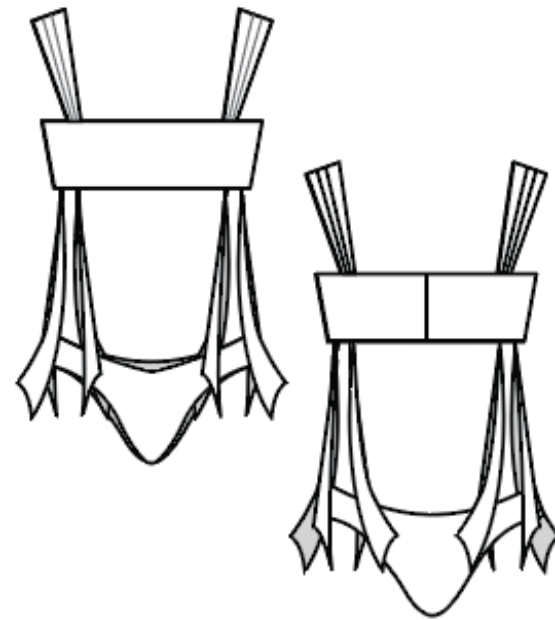
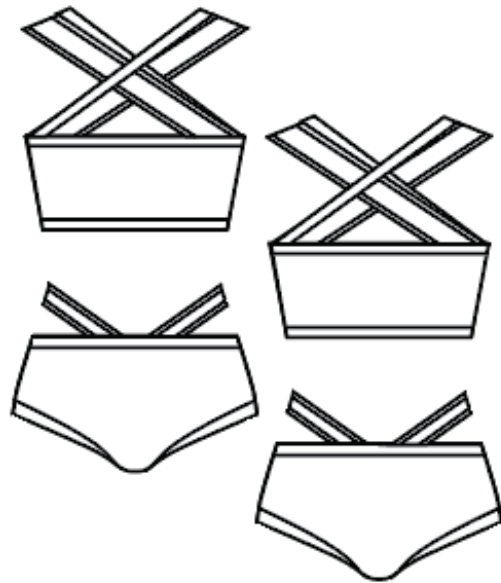
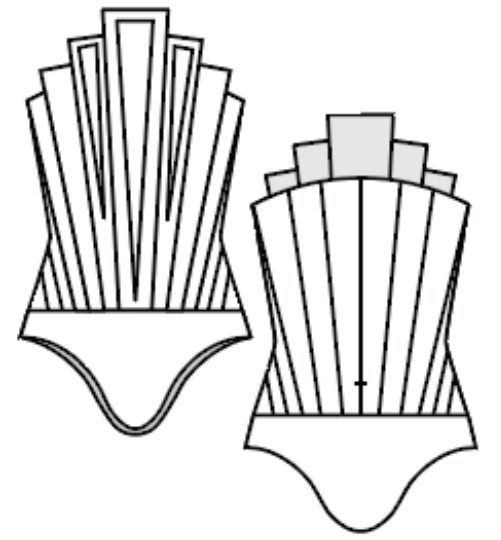
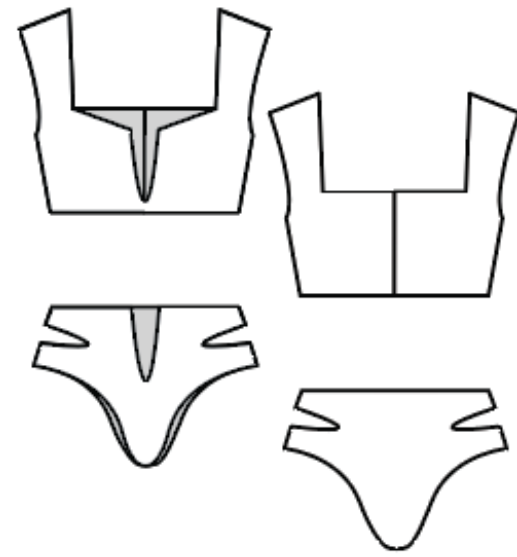
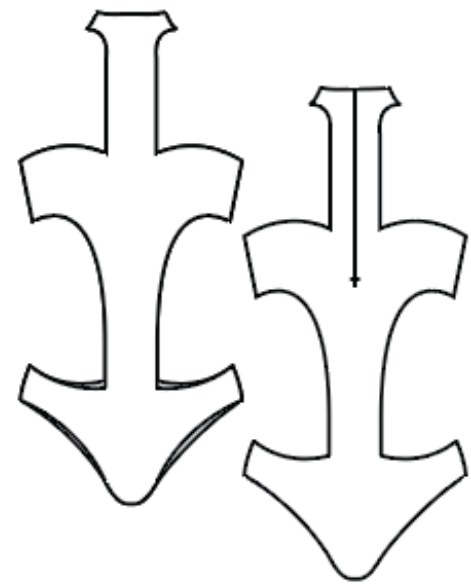
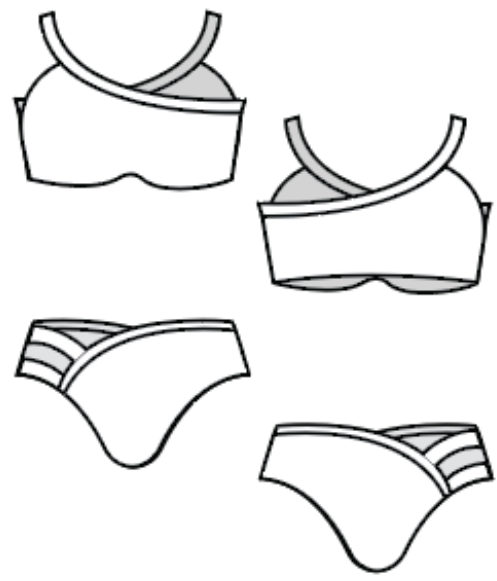
ILLUSTRATIONS

25



ILLUSTRATIONS

26



FLATS

27



VECTORIA

28



Victoria

VECTORIA is a modular collection designed to function like a Lego system, where each piece seamlessly integrates to create multiple looks. Rooted in geometric silhouettes, color blocking, and contrasting textures, the collection balances breathable, lightweight fabrics with structured materials to achieve both comfort and refinement. Layered mesh and ruching introduce an opaque translucency, while foundational garments serve as versatile building blocks. Guided by my commitment to sustainability and longevity, this collection incorporates upcycled materials to reduce waste and challenge fast fashion practices. Each design is intentionally created for repeat wear and styling versatility, ensuring relevance across seasons while maintaining a strong, cohesive visual identity.



Individual pieces that can be mixed & matched to fit together and

Like Legos

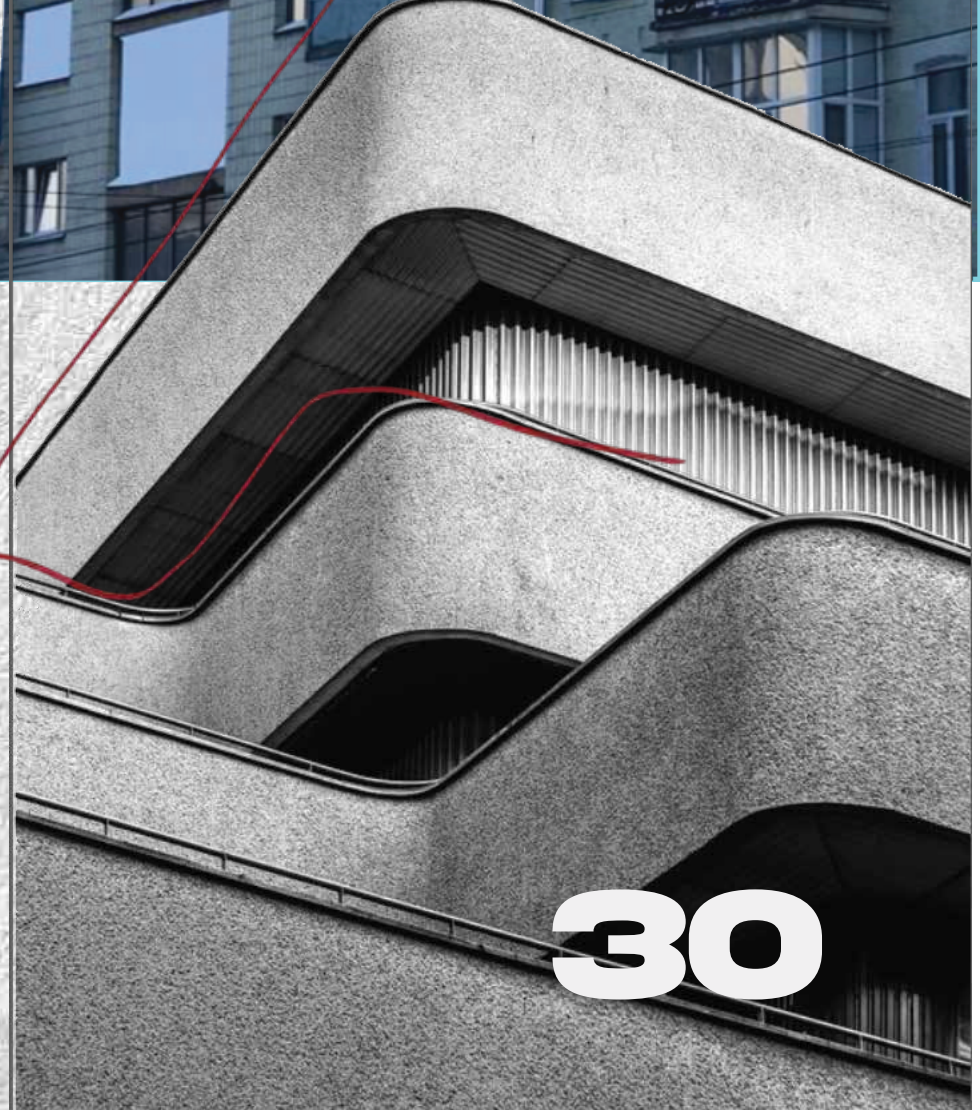
Create interesting combinations

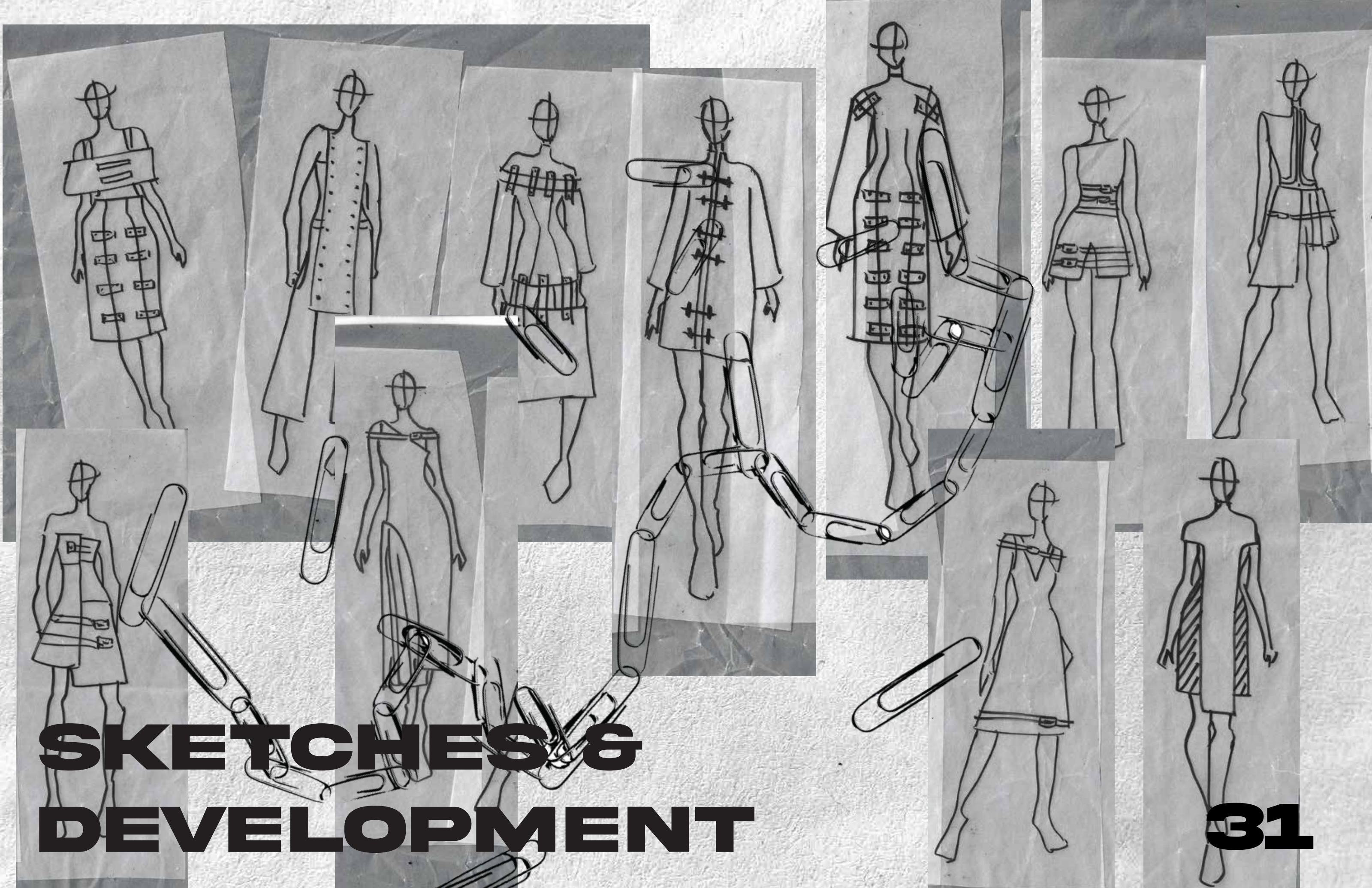


Very clear & defined lines & silhouettes

Garments that more fit in professional (serious environments)

— that you can still play with colors & textures



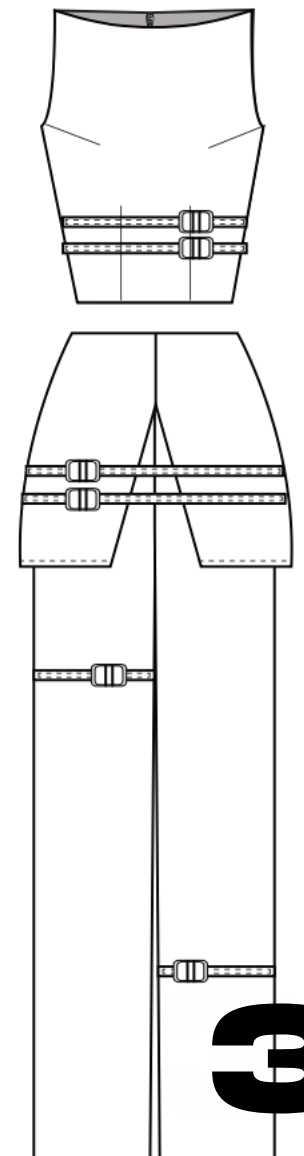
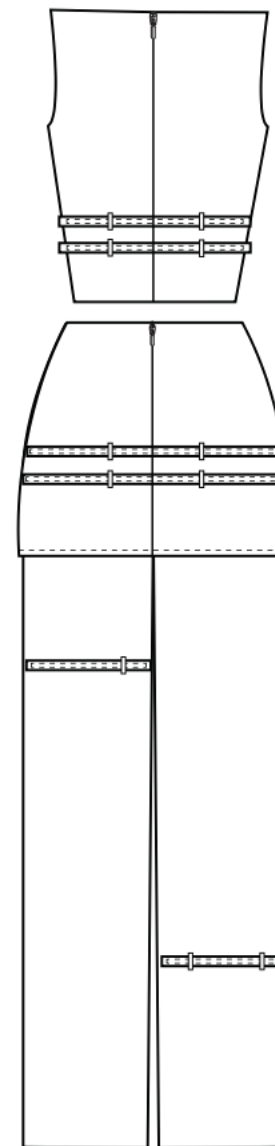
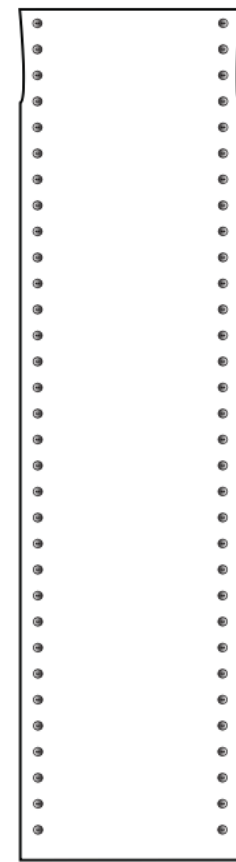
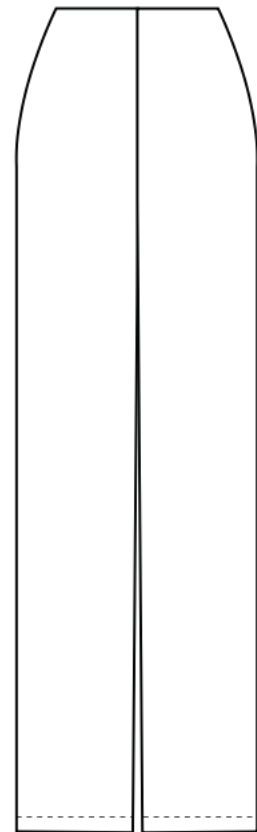
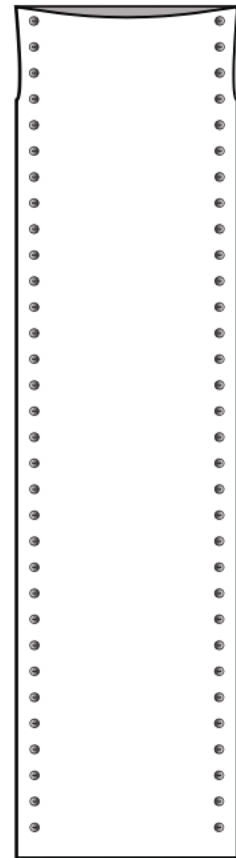
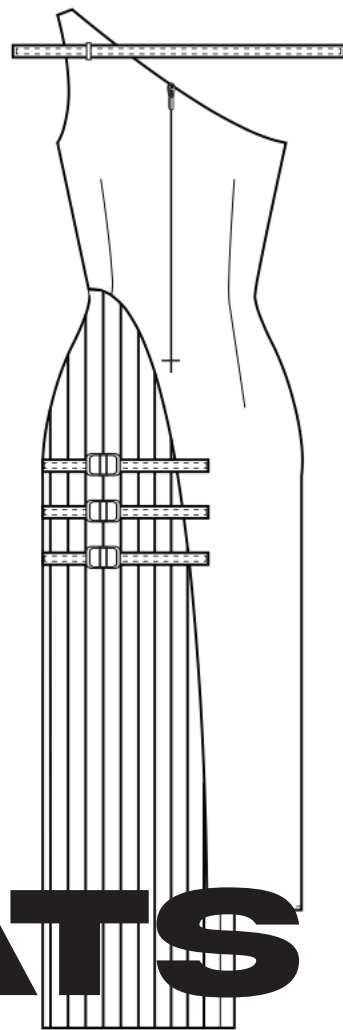
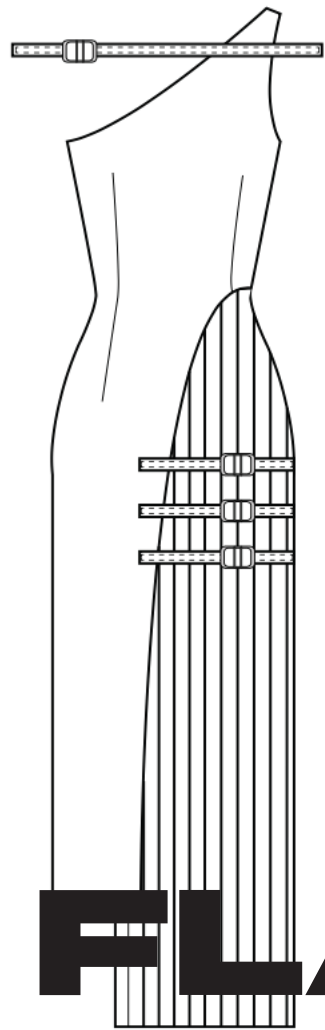
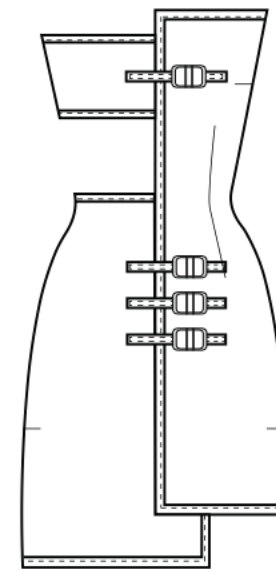
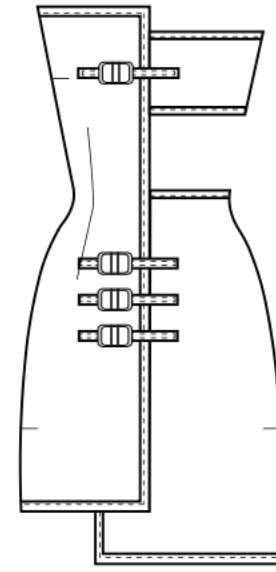
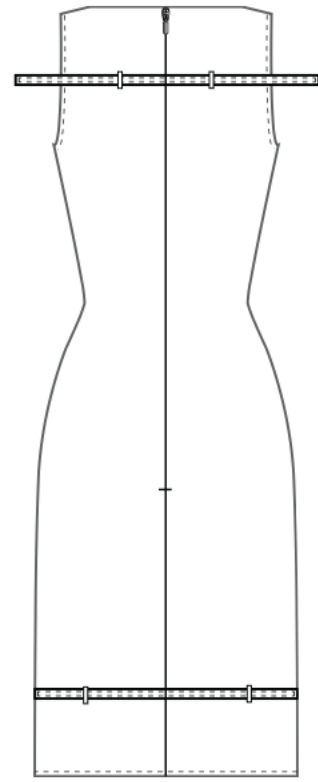
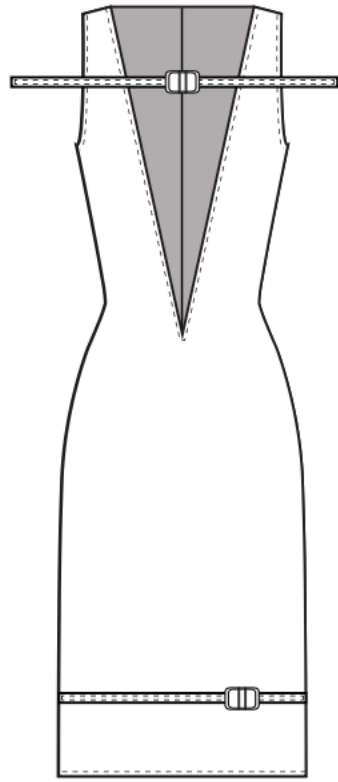


**SKETCHES &
DEVELOPMENT**



ILLUSTRATIONS

32



FLATS

33