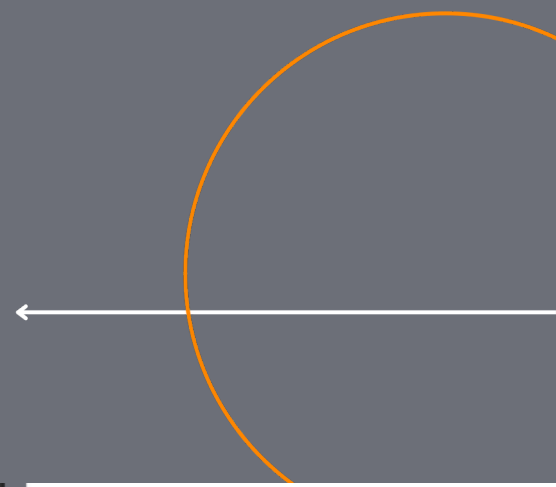

ELECTRONIC LOCKS

These smartlocks are built to secure your home and **simplify your life.**



Works with
Tuya



ELECTRONIC LOCK

Security, convenience, and smart control for your door.

Fortfy offers a modern electronic lock with **password access** and physical **backup keys**. Perfect for homes, offices, or vacation rentals, it ensures greater protection and practicality in your daily routine.



Password Unlock



Key Unlock



PRODUCT DETAILS

- Brand: Fortfy
- Password and Key Access
- 50 User Codes
- Two Spare Keys
- Auto-Lock
- Easy to Install
- Low Battery Alarm
- Type-C Power Backup
- Power Source: 4 AA Batteries

(Not included)



ELECTRONIC LOCK

Advanced access, maximum security.

This Fortfy lock features **password** access, **fingerprint** recognition, and physical **keys**—offering flexibility for families, employees, or guests. With modern tech and a sleek design, it's built for secure and effortless living.



PRODUCT DETAILS

- Brand: Fortfy
- Password, Biometric, and Key Access
- 99 User Codes
- 50 Fingerprint
- Two Spare Keys
- Auto-Lock
- Easy to Install
- Low Battery Alarm
- Type-C Power Backup
- Power Source: 4 AA Batteries
- (Not included)



ELECTRONIC LOCK

This advanced Fortfy model includes **password** access, **fingerprint recognition**, physical **keys**, and **Wi-Fi connectivity**—so you can control your door remotely via smartphone.

Perfect for those who want real-time access management and seamless smart home integration, all in a stylish and secure design.



PRODUCT DETAILS

- Brand: Fortfy
- Password, Biometric, Key, and Wi-Fi Access
- 99 User Codes
- 50 Fingerprint
- Two Spare Keys
- Auto-Lock
- Easy to Install
- Low Battery Alarm
- Type-C Power Backup
- Optional Tuya Function
- Power Source: 4 AA Batteries
- (Not included)



HEAVY DUTY LEVER LOCK

The perfect balance of **design** and **performance**.



HEAVY DUTY LEVER LOCK- HD01

The FORTIFY Heavy Duty Lever Lock delivers security and elegance with a modern, functional design. Its matte black finish adds a sophisticated touch, perfectly complementing a variety of décor styles. Built for heavy use, it provides a smooth and comfortable experience for everyday life, making it ideal for homes and offices that value both quality and style.



PRODUCT DETAILS

Color: Brushed Nickel and Black

FITS ALL STANDARD DOORS

Dimensions: 2 3/8" (60mm) and 2 3/4" (70mm) Backset

- EASY INSTALLATION
Uses Head Screwdriver

- CERTIFIED SECURITY
Approximately 200,000 Cycles

100% PREMIUM QUALITY GUARANTEED



HEAVY DUTY LEVER LOCK- HD02

The FORTIFY Heavy Duty Lever Lock combines privacy, durability, and style in a modern design. Perfect for bathrooms or bedrooms, it features an interior thumb turn for easy locking and unlocking, ensuring privacy and convenience. Its matte black or brushed nickel finish adds a sleek, contemporary touch that blends seamlessly with a variety of décor styles. Built for smooth operation and everyday reliability, it's the ideal choice for homes and offices seeking functionality and elegance.



PRODUCT DETAILS

Color: Brushed Nickel and Black

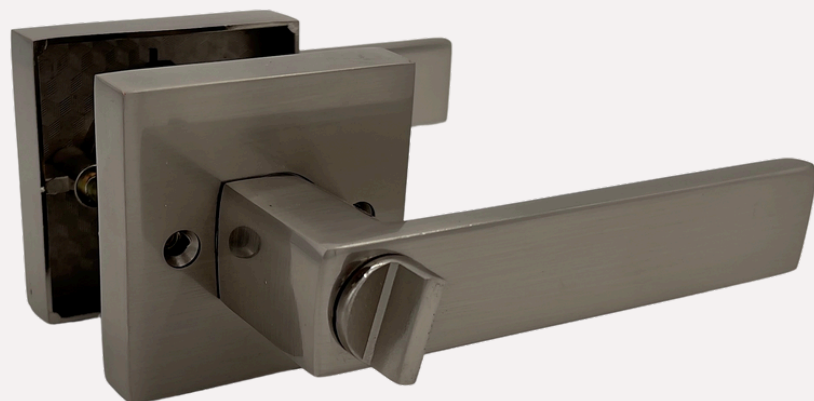
FITS ALL STANDARD DOORS

Dimensions: 2 3/8" (60mm) and 2 3/4" (70mm) Backset

- EASY INSTALLATION
Uses Head Screwdriver

- CERTIFIED SECURITY
Approximately 200,000 Cycles

100% PREMIUM QUALITY GUARANTEED



HEAVY DUTY LEVER LOCK- HD03

The FORTIFY Heavy Duty Lever Lock delivers elegance and durability with a modern, functional design. Perfect for interior doors that don't require locking, it allows smooth and easy operation while adding a sophisticated touch to any space. Its matte black or brushed nickel finish complements a wide range of décor styles, making it ideal for hallways, closets, and rooms where convenience and style are essential.



PRODUCT DETAILS

Color: Brushed Nickel and Black

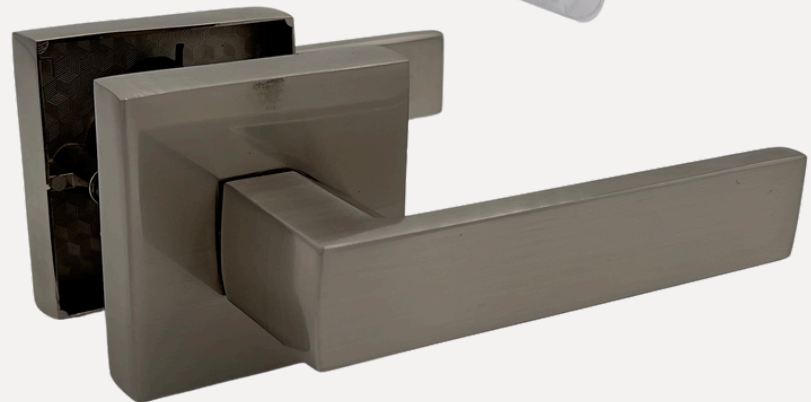
FITS ALL STANDARD DOORS

Dimensions: 2 3/8" (60mm) and 2 3/4" (70mm) Backset

- EASY INSTALLATION
Uses Head Screwdriver

- CERTIFIED SECURITY
Approximately 200,000 Cycles

100% PREMIUM QUALITY GUARANTEED



KNOB LOCK

The perfect balance of **design**
and **performance**.



KNOB LOCK - KL 01

The FORTIFY Heavy Duty Knob Lock delivers security and durability with a sleek, modern design. Ideal for entry doors, bedrooms, or offices, it features a keyed locking system for everyday safety and convenience. Available in matte black or brushed nickel, it blends perfectly with any décor while ensuring smooth, long-lasting performance.



PRODUCT DETAILS

Color: Brushed Nickel and Black

FITS ALL STANDARD DOORS

Dimensions: 2 3/8" (60mm) and 2 3/4" (70mm) Backset

- EASY INSTALLATION
Uses Head Screwdriver

- CERTIFIED SECURITY
Approximately 200,000 Cycles

100% PREMIUM QUALITY GUARANTEED



KNOB LOCK - KL 02

The FORTIFY Heavy Duty Knob Lock combines privacy, durability, and style in a timeless round design. Ideal for bathrooms or bedrooms, it features an easy thumb turn for quick locking and unlocking. Available in matte black or brushed nickel, it delivers smooth performance and everyday reliability with a modern, elegant touch.



PRODUCT DETAILS

Color: Brushed Nickel and Black

FITS ALL STANDARD DOORS

Dimensions: 2 3/8" (60mm) and 2 3/4" (70mm) Backset

- EASY INSTALLATION
Uses Head Screwdriver

- CERTIFIED SECURITY
Approximately 200,000 Cycles

100% PREMIUM QUALITY GUARANTEED



KNOB LOCK - KL 03

The FORTIFY Heavy Duty Lever Lock delivers elegance and durability with a modern, functional design. Perfect for interior doors that don't require locking, it allows smooth and easy operation while adding a sophisticated touch to any space. Its matte black or brushed nickel finish complements a wide range of décor styles, making it ideal for hallways, closets, and rooms where convenience and style are essential.



PRODUCT DETAILS

Color: Brushed Nickel and Black

FITS ALL STANDARD DOORS

Dimensions: 2 3/8" (60mm) and 2 3/4" (70mm) Backset

- EASY INSTALLATION
Uses Head Screwdriver

- CERTIFIED SECURITY
Approximately 200,000 Cycles

100% PREMIUM QUALITY GUARANTEED

