

WINGMAN'S "WINGMAPS"

State of the art site-mapping resources



WINGMAN DRONES



Photogrammetry:

the process of stitching photos together using a computer with specialized programming and high processing power



Google Earth:

Free aerial photography provided by satellite (can take up to 10 years to update)



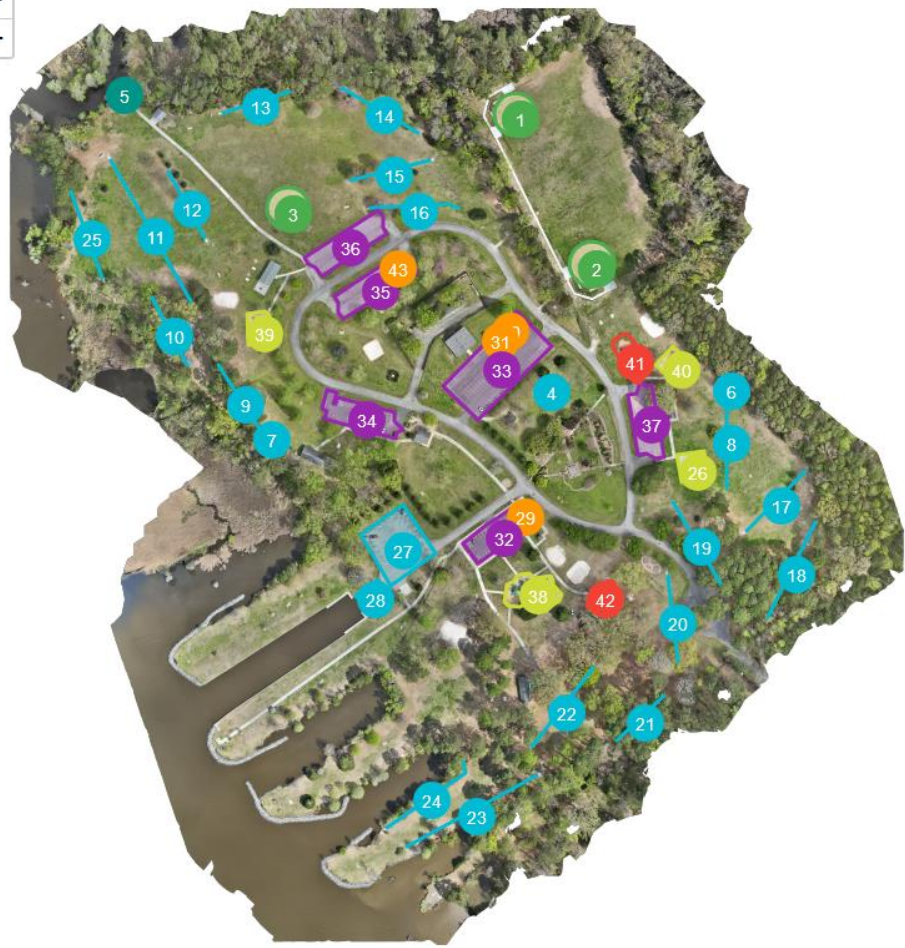
Orthomosaic:

High-accuracy measurable map created from the stitched together images (created and processed by Wingman)

TERMS



WINGMAN DRONES



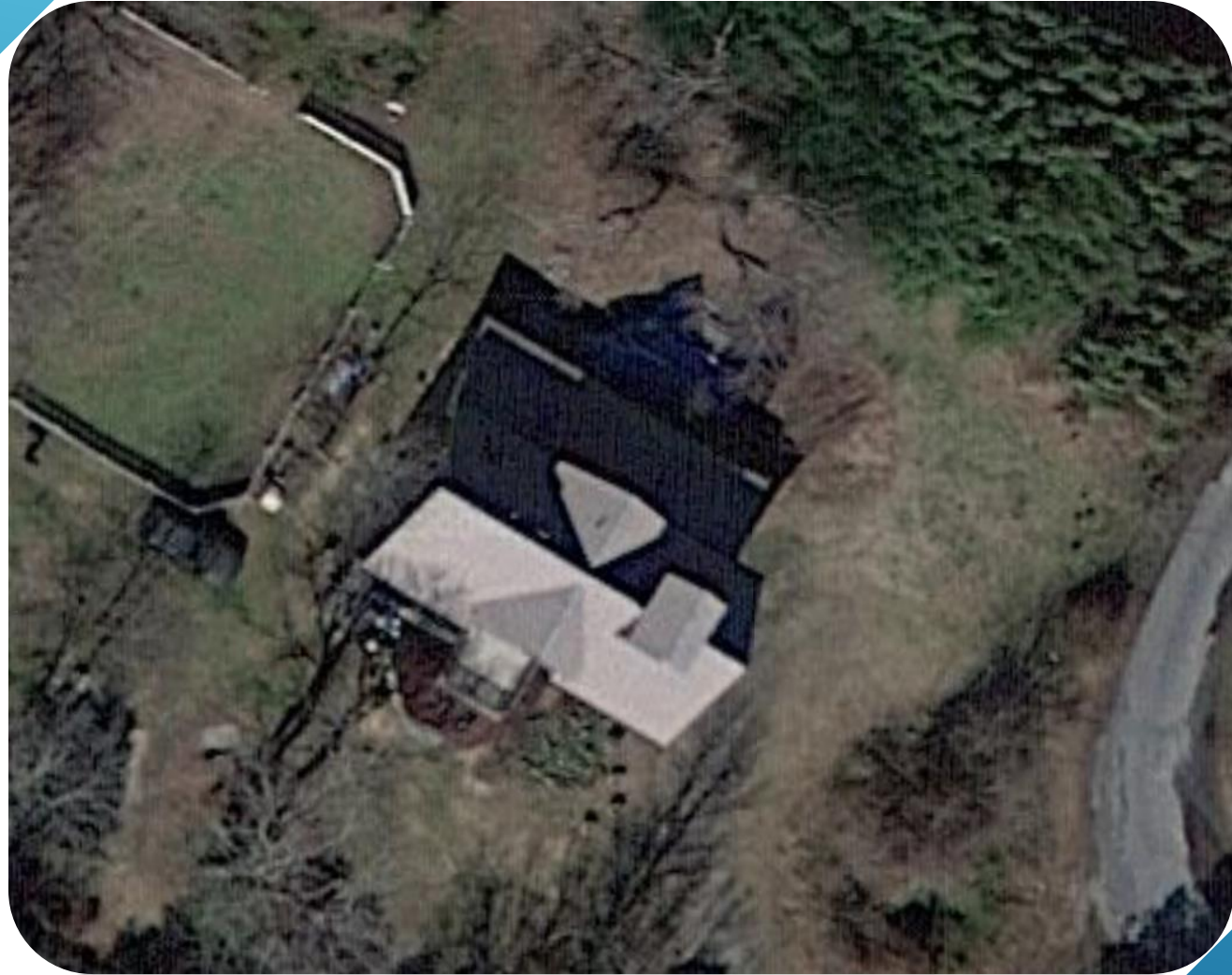
Area

Label	Title	Area
26	Basketball Courts	4905.81 ft ²
27	Boat Launch Area/Boat Launch Parking	20111.00 ft ²
28	Boat Ramp Area	2583.45 ft ²
29	Building Materials	631.26 ft ²
30	Building Materials	394.45 ft ²
31	Building Materials	62.71 ft ²
32	Parking Area A	11309.00 ft ²
33	Parking Area B	32821.00 ft ²
34	Parking Area C	11903.00 ft ²
35	Parking Area D	12802.00 ft ²
36	Parking Area E	13185.00 ft ²
37	Parking Area F	10733.00 ft ²
38	Playground A	9154.74 ft ²
39	Playground B	4463.02 ft ²
40	Playground C	5160.98 ft ²

SAMPLE WINGMAP



WINGMAN DRONES



CURRENT GOOGLE EARTH PHOTO

- Last updated: 2013
- Warped Image
- Low Quality
- Accurate measurements impossible
- Multiple areas unaccounted for



WINGMAN DRONES



WINGMAN DRONES ORTHOMOSAIC

- Conducted on March 9th, 2023
- True top-down view
- 4K photography with AI-photogrammetric stitching
- Accurate top-down view– can be measured
- Capable of Visual Roof and Facade Inspections
- Embeddable Video and Interactive Panoramas... and more!



WINGMAN DRONES



Step 1: Mission Planning



Step 2: Site Capture



Step 3: Processing



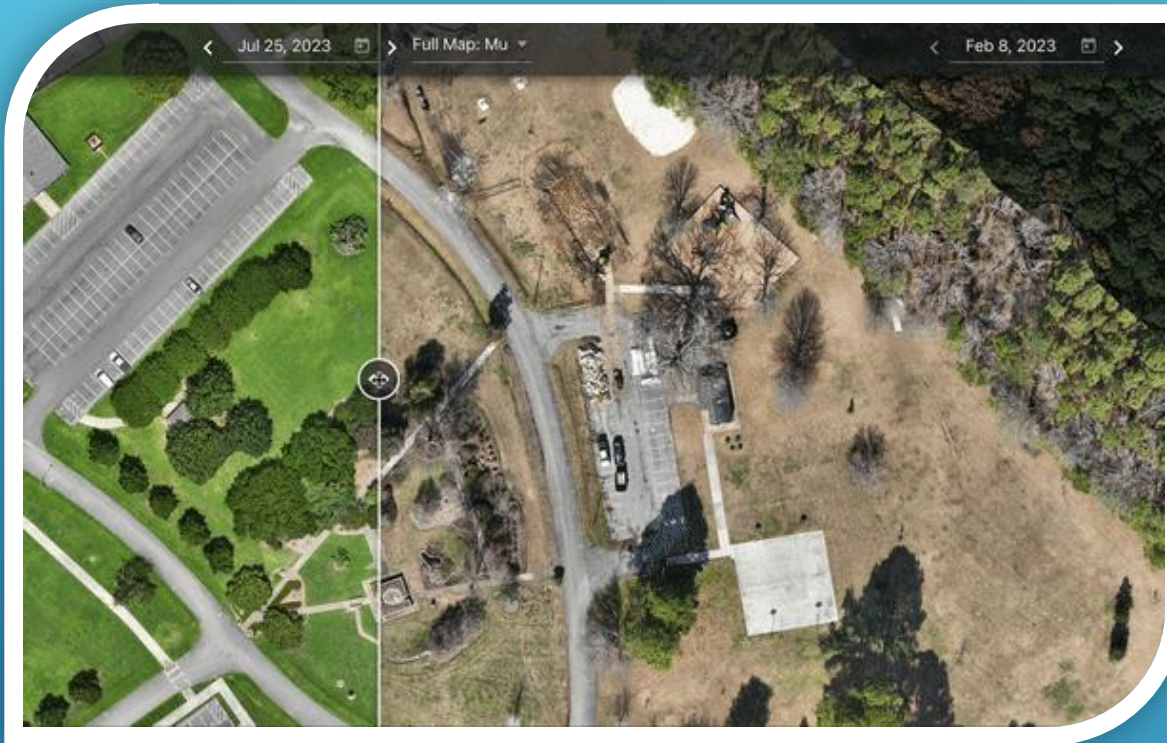
Step 4: Deliverables/Reports



OUR PROCESS

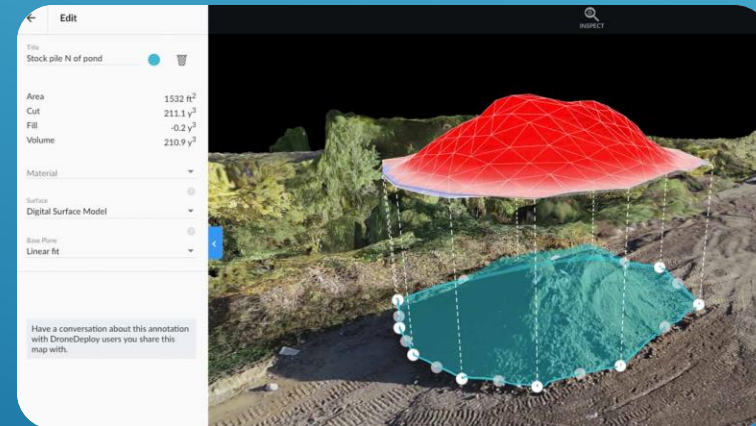


WINGMAN DRONES

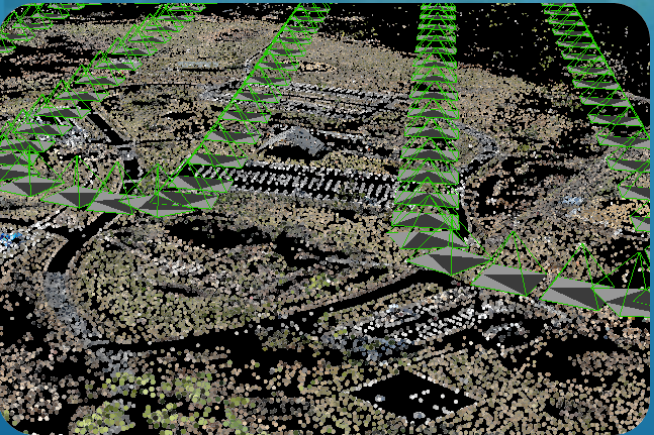
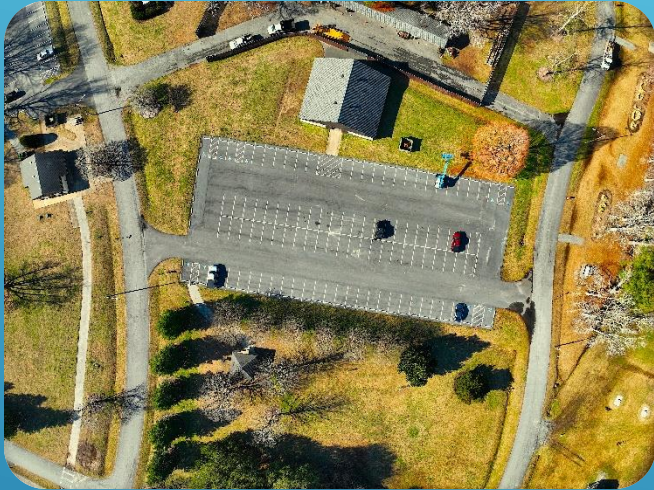


MEASUREMENTS CAPABILITIES:

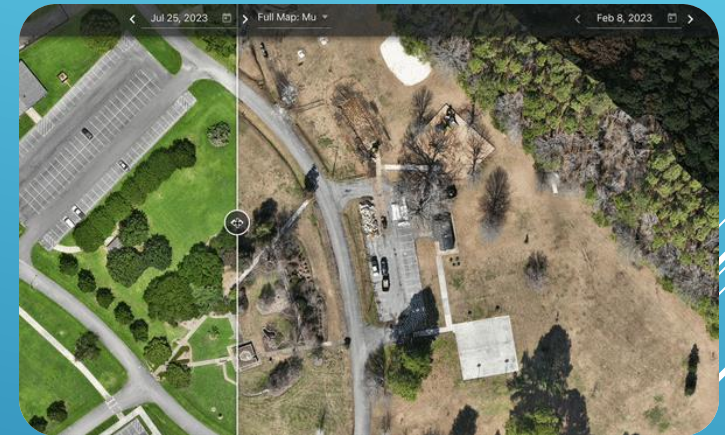
- Accurate Distance/Surface Area measurements
- Preliminary Elevation Maps and Profiles
- Note: use these measurements **internally** as **guidelines**. To verify them for legal use, a surveyor's license is required to verify accuracy.



Share Flight Data With Your Team!



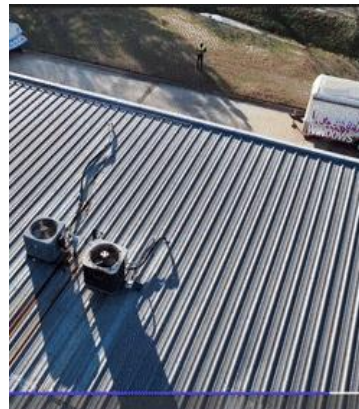
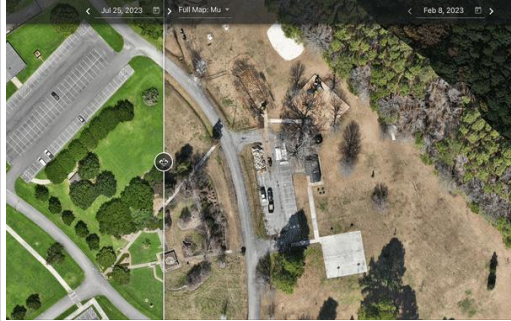
View our sample map here!



Munden Point,
April 4th, 2023



WINGMAN DRONES



- State-of-the-art, enterprise grade mapping
- Fast turn-around
- Detailed, engaging, and cutting-edge technology
- Accurate and easy to understand representations

WINGMAN'S ORTHOMOSAICS



WINGMAN DRONES



WINGMAN DRONES