



LOCAL SOCIAL MEDIA DISCUSS POSSIBLE FUTURES FOR THE KURSAAL



kursaal photo by Benja Min



Wouldn't it be great if the Regis Entertainment Group could buy up the Kursaal and turn parts of it and the Minerva into a boutique hotel, especially as they have recently had to turn loads of customers away from The Roslin hotel.

The Regis Entertainment Group could also purchase Larry Fenttimans land, opposite the Kursaal, and plant it with trees offering day trippers a canopy to cool under prior to hitting the A127 or A13 on their homeward journey.

The Kursaal and park could feature cafes, restaurants, and an area set aside for music and theatre shows open to both clients and the public, maybe similar to Brent Walker's ideas.

A great winter attraction for the park could be a picturesque Victorian looking ice-skating rink in the winter and possibly a fountain in summer.

Maybe the park should have a high ornate wrought iron fence all the way round that could be locked at night and used as a honeypot escape route for troublemakers.

SOUTHEND LABOUR CALL FOR A COST-OF-LIVING EMERGENCY TO BE DECLARED

The cost-of-living crisis is turning into a cost-of-living catastrophe, and the government aren't doing enough about it.

Southend Council can't solve this problem ourselves, but I think we need to step up to do what we can to support our residents.

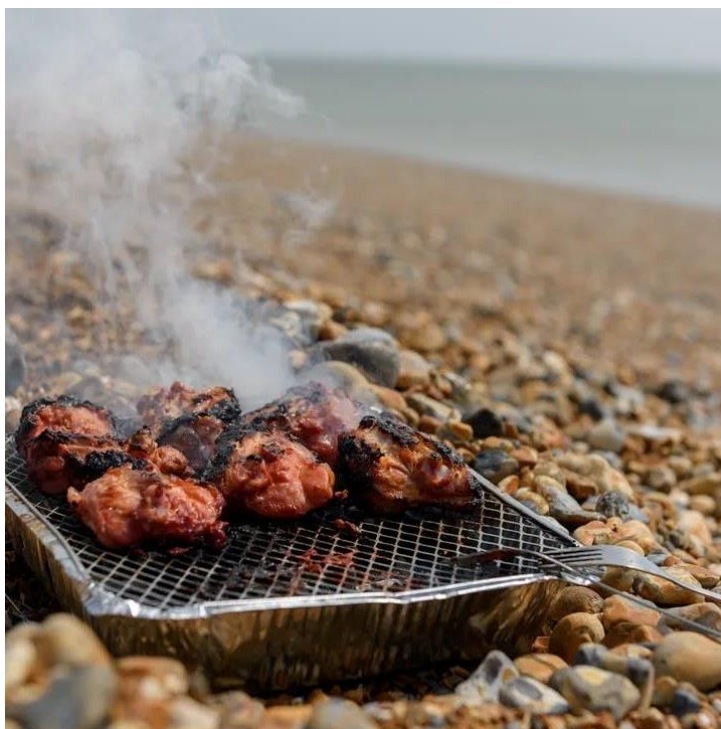


Come October, the cost-of-living crisis is going to become a cost-of-living catastrophe. The government are doing nothing to counter it, so for that reason I and my [Southend Labour](#) colleagues have called a special meeting of [Southend-on-Sea City Council](#) to declare a cost of living emergency.

On 22 August, Southend Council will meet to debate our motion. It isn't a magic bullet and dealing with the soaring cost of living is beyond what any local authority can do - but we can help residents, and I think we have a duty to do so. This motion will task the Council to look at what we can do to help residents with rising costs of all aspect of life.

If you live in Southend, please contact your councillor, and ask them to support Southend Council declaring a cost-of-living emergency.

HAVE YOUR SAY ON BEACH BBQS AND WATERCRAFT



A new survey has launched on the Your Say Southend website asking residents for their thoughts on introducing a Public Safety Protection Order (PSPO) that covers public barbequing and use of personal watercrafts (PWCs).

The proposal for a PSPO comes from complaints the council has received from residents regarding irresponsible or dangerous use of disposable BBQs, bonfires, and personal watercrafts, such as jet skis, along our coastline. The survey will help to fine-tune the recommendations for the PSPO, which will be submitted to full cabinet in due course.

Currently BBQs are not allowed on Shoeburyness East Beach nor Shoebury Common, due to the hot and dry conditions, and anti-social behaviour that has been experienced in these areas. BBQs are also discouraged throughout public spaces in the city, along with bonfires. PWCs are permitted but people who use them are reminded to do so respectfully and responsibly, from the designated launch sites. Under the new PSPO some of these restrictions may change, so it's important to make sure you have your say on the Your Say Southend online platform.

The survey is available now until 26 August 2022, and can be accessed via the Your Say Southend website: <https://yoursay.southend.gov.uk/pspo-bbq-in-public-areas>. All responses will be submitted to cabinet along with the report of findings from the survey.



017 EAST BEACH FESTIVAL

EAST BEACH SHOE BURYNESS SOUTH END

COMING

13TH - 14TH AUGUST 2022

48 ARTIST

8 DJS

8 HOST

4 BARS

JERK STALLS

FOOD STALLS

VIP ARENAS

1 MARKET PLACE

Stall Enquires : 07857 589 375

General Enquires: hello@eastbeachfestival.uk

FREE

#1 LOVE 1VIBE 1CITY

WHERE HAVE ALL OUR SEATS GONE?



Travelling to Southend High Street or the seafront, from Kilworth Estates neighbourhood involves ascending and descending steep hills or prolonged gradients, at York Road or Southchurch Avenue.

Seats were placed in the middle of the ascent and descent to allow for a comfort break, it is believed they had been there since the estate was built. However, in the recent past these seats have disappeared. Now older and disabled residents find these steep hills almost impossible without a place to sit and recover.

On the west of Southend, two lifts and an abundance of chairs are on offer to the weary travellers. Residents on this this side of town would like our chairs replaced.

Not only have our churches been demolished, our trees uprooted but now our benches have also been removed.

Residents feel this behaviour is offensive and unacceptable and would like them replaced as soon as possible.



Southend YMCA are a genuinely inspirational local charity, which do a tremendous amount of good in the City of Southend - and now they're up for a national award! Southend YMCA's New Beginnings project supports young people with a wide range of personal development programmes and is open to young people 16 to 24, who have experienced homelessness within the local area.

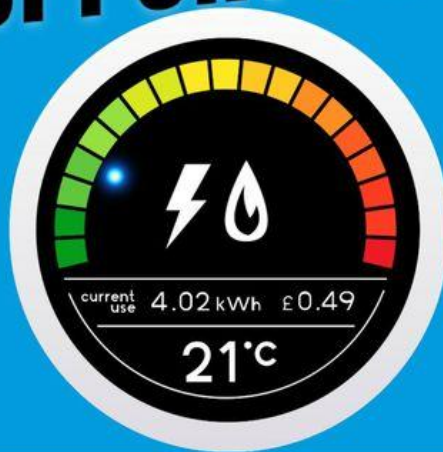
Using a range of delivery methods, they can help young people to:

- ❖ Progress into education, training or employment improved confidence and motivation.
- ❖ Skill development – improved literacy/numeracy & communication.
- ❖ Feel less isolated;
- ❖ Gain qualifications.

You can vote for Southend YMCA and New Beginnings in the [YMCA England & Wales #YouthMattersAwards](https://www.ymca.org.uk/youth-matters-awards-2022-semi...) here: <https://www.ymca.org.uk/youth-matters-awards-2022-semi...>

Voting closes on 15 August. Please support Southend YMCA and share this post to spread the word.

INCREASE AND EXPAND THE HOUSEHOLD SUPPORT FUND



The Household Support Fund helps vulnerable people with the cost of essentials like their food, water and energy bills. Last winter, Councils handed out nearly £500 million in cash, vouchers and other support, with over 80% of funding going to families with children.

Yet despite the fact that prices have risen extraordinarily over the past year and energy bills look set to double, the UK Government has not increased the amount of funding allocated to the scheme extension this winter. The Government has also added strict criteria about how the funding must be divided, with a third going to families with children, a third going to pensioners, and a third to everyone else – regardless of local demographics and of who needs the support most.

The [Co-operative Party](#) are calling on the Government to double the funding available over the winter from £500m to £1 billion, and to remove spending criteria so that Councils can allocate the money based on who needs it most in their local community, not arbitrary Government targets.

Do you agree? Then add your name to the petition: <https://party.coop/household-support>



ESSEX POLICE

Protecting and serving Essex **Southend Central Wards** **Local Community Meeting**

Tuesday 30 August 2022
19.30 at the Civic Centre

Come along and hear from local police about recent activities,
and feed back issues and concerns in the town centre.



CLLR MATT DENT

YOUR VOICE FOR KURSAAL

Southend Community Policing Team have advised that the next Local Community Meeting for Southend Central wards (Victoria and Milton wards as well as [#KursaalWard](#)) will be **at 19.30 on Tuesday 30 August 2022**, and will be held **at Southend Civic Centre**.

These public meetings are hosted by the [Essex Police - Southend District](#) Community Policing Team and give residents the opportunity to put questions about local policing issues directly to the officers responsible.



This Saturday the fantastic folks at [SHIP](#) will be running a free wildlife and heritage event at Southchurch Hall Gardens.

The event will include:

- ❖ Music
- ❖ Games and activities
- ❖ Local wildlife groups
- ❖ Free refreshments

As with previous SHIP events, this promises to be a fun and educational event for the whole family, so if you're at a loose end why not pop down and have a look?

WINNING SPOTS FOR PERSISTENCE IN FLY-TIPPING



MUSIC IN THE PARK



MUSIC
IN THE PARK

Enjoy free open air concerts
Every weekend and bank holiday from
17 April - 25 September
at the Priory Park Bandstand

visitsouthend.co.uk

Working to make
lives better
www.southend.gov.uk

**southend
onse**
BOROUGH COUNCIL

BTMK **BTMK** **BTMK** **BTMK**
SOLICITORS MARCUS BAUM GOODSON TOOMANS

The ever-popular Music in the Park from [Southend-on-Sea City Council](http://www.southend.gov.uk) is back at Priory Park bandstand. The bandstand will come alive with top local bands and musicians! This free event runs every weekend and bank holiday until Sunday 25 September.

This weekend the acts are:

Saturday: Timeline

Sunday: Pat English Band

Acts perform between 15.00 and 16.30. No chairs are provided so please bring your own or a blanket. There is also limited parking at the park so where possible use public transport, walk or cycle.



The Mayor of Southend invites you to:-

La Sirena

Tuesday 20th September

12.00. £22pp

2 course lunch

to book : email - events@southendmayorscharity.net







or call - 0300 102 1557

Bookings close 13th September

Made with PosterMyWall.com LA SIRENA, 101 LEIGH ROAD, LEIGH ON SEA, SS9 1JL



[Southend Foodbank](#) have said that the items they need most urgently this week are have said that the items they need most urgently this week are:

-  Tinned sweetcorn
-  Tinned tomatoes
-  UHT milk
-  Meat meals - tinned curry, chilli, chicken in sauce
-  Sponge puddings
-  And strong re-useable carrier bags

90% of all the food given out is donated by the community but increasingly they need to buy essentials. They are committed to giving food parcels that provide filling, balanced meals as well as offering basic toiletries, but this depends on kind and generous donations from the public.

If you want to get a notification straight to your phone about what is needed and where you can donate, you can use Bank the Food. Installing the Bank the Food app connects you to Southend Foodbank's most needed items, by pinging your phone when you enter a supermarket that has a foodbank donation point. The app is completely free and was developed in Southend with a local charity supporting Southend Foodbank: www.bankthefood.org/

SOUTHEND COUNCIL NEWS

[Text-based health initiative rolled out to parents and carers](#)

[Council set to help Jazz Centre find new home in the City](#)

[Have your say on beach BBQs in new Your Say Southend Survey](#)

[Deputy Leader's blog - 5 August 2022](#)

[East Beach car park reopens this weekend](#)

[Planned road and pavement improvements announced for August](#)

Join the Jam! Southend City Jam seeks volunteers

Health clinics resume walk-in service for children

Stay safe in the heat as Amber weather warning issued for rest of week

New team to carry out minor road repairs at no cost to council

Council issues BBQ safety warning as extreme heat hits the region

Council housing projects shortlisted for regional awards

Leader's blog - 12 August 2022

[The LaunchPad nearing completion](#)
[Statement on Southend City Festival](#)

[Statement from the Mayor following death of Graham Longley](#)

[City lights will turn blue and yellow to celebrate Ukrainian Independence Day](#)

[Fraudster convicted over £20k fake covid grant](#)

[Leader's blog - 19 August 2022](#)

[Council meetings to discuss Swan and Orbit merger](#)

Last chance to apply for £150 council tax rebate

Stay up to date with the latest council news by signing up to E-newsletters

Wristbands can help reunite lost children with their parents

Southend Museums announces exciting acquisition of artwork by artist Elsa James

Deputy Leader's blog - 26 August 2022

Illegal ice cream trader found guilty

Southend Careers Service hosts employment drop-in for all ages

