



Vaccines have built a wall of protection around our communities, allowing us to get back to a more normal way of life. Spring COVID-19 booster jabs are available for: - care home residents, people aged 75+, and those with a weakened immune system aged 12 and over. Almost 150,000 people have already booked their spring boosters. The NHS will contact you and invite you to book your spring booster when it's due.



[Book or manage a coronavirus \(COVID-19\) vaccination - NHS \(www.nhs.uk\)](https://www.nhs.uk)

Speech made by The Prince of Wales to mark Southend-on-Sea becoming a City



To see the speech as delivered by The Prince of Wales in the council chamber on Tuesday 1 March, please see [Southend Council news link](#) below.

RELIEF EFFORT FOR UKRAINE

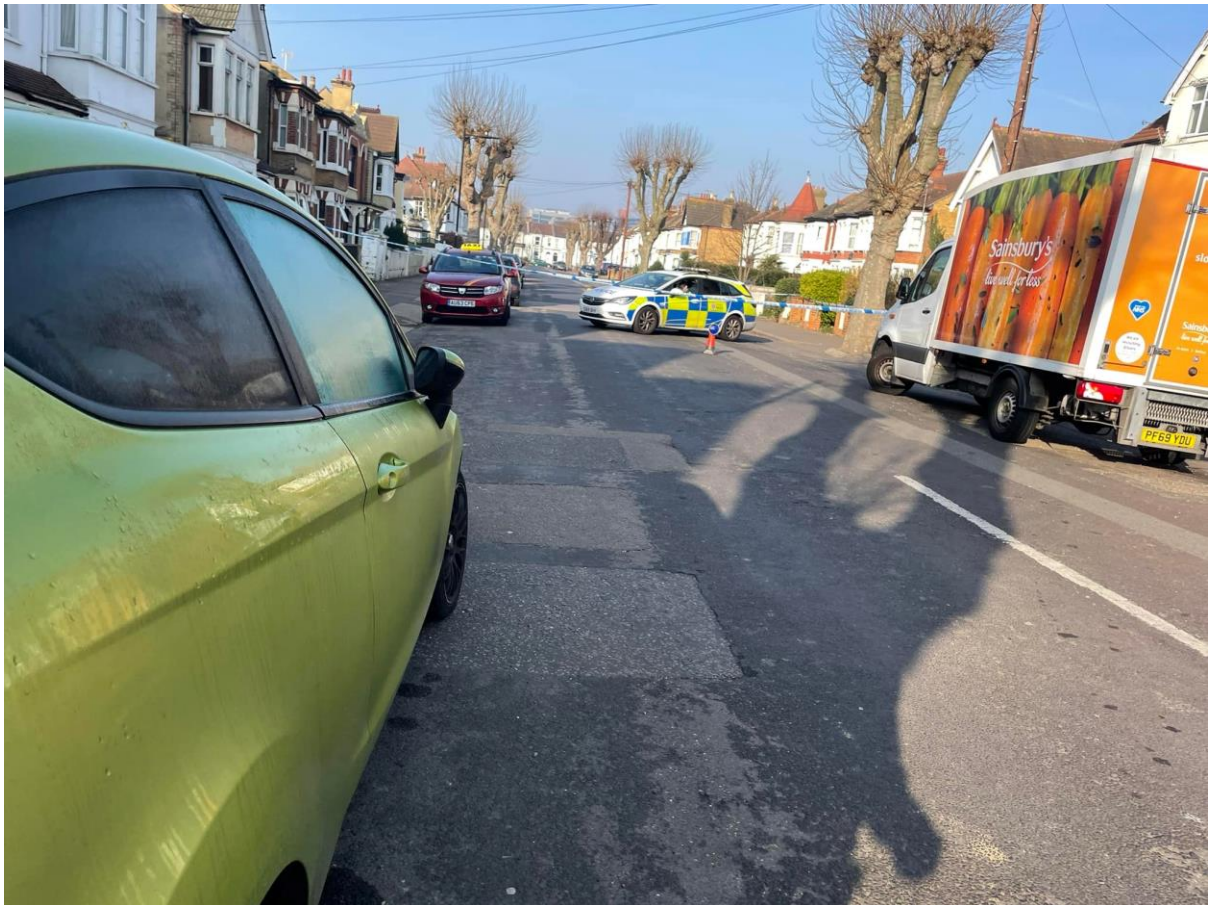


Residents of the City of Southend-on-Sea are showing true generosity in the relief effort for the people of Ukraine.

A Facebook group has been set up for the community donation drive with details of local collection points, what items are needed and other up-to-date information.

(Please note this Facebook group is not managed by Southend-on-Sea City Council): <https://www.facebook.com/groups/1661205490889449>

Police Incident in Kilworth Avenue



In the early hours of the morning, on the 21st March, a man was arrested on suspicion of GBH with intent following an incident in Kilworth Avenue, Southend.

Shortly before 4am, police and an ambulance were called to investigate concerns for a man with a head injury in the Avenue.

The Avenue remained cordoned off for the morning while officers examined the scene.

Great British Spring Clean comes to the country's newest City



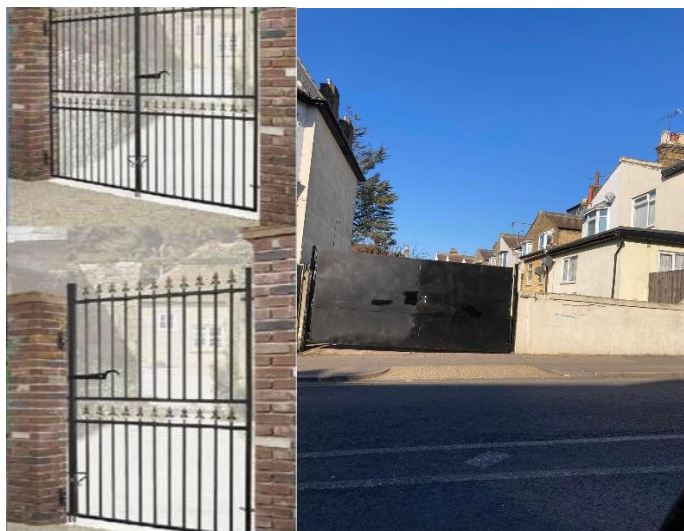
Alongside Veolia we are supporting Keep Britain Tidy's Great British Spring Clean, with the community urged to get involved and help keep our city a place we are all proud of. To find out more please see link to Southend Council news below.

Southchurch Avenue Garage

For over a decade the garage belonging to the house situated on the south-west corner of York Road and Southchurch Avenue has been used as a place to fly tip rubbish in. Back in 2007, members of the resident's association painted the house and garage area and cleared the dumped rubbish away.



During the lockdown period this garage was continuously fly tipped with mattresses and unwanted furniture. Members of residents association asked Cllr Tricia Cowdrey if the problem could be resolved. Ornate iron gates were suggested but these are the gates that have been installed, at least they will prevent further fly tipping.



The Great British Spring Clean

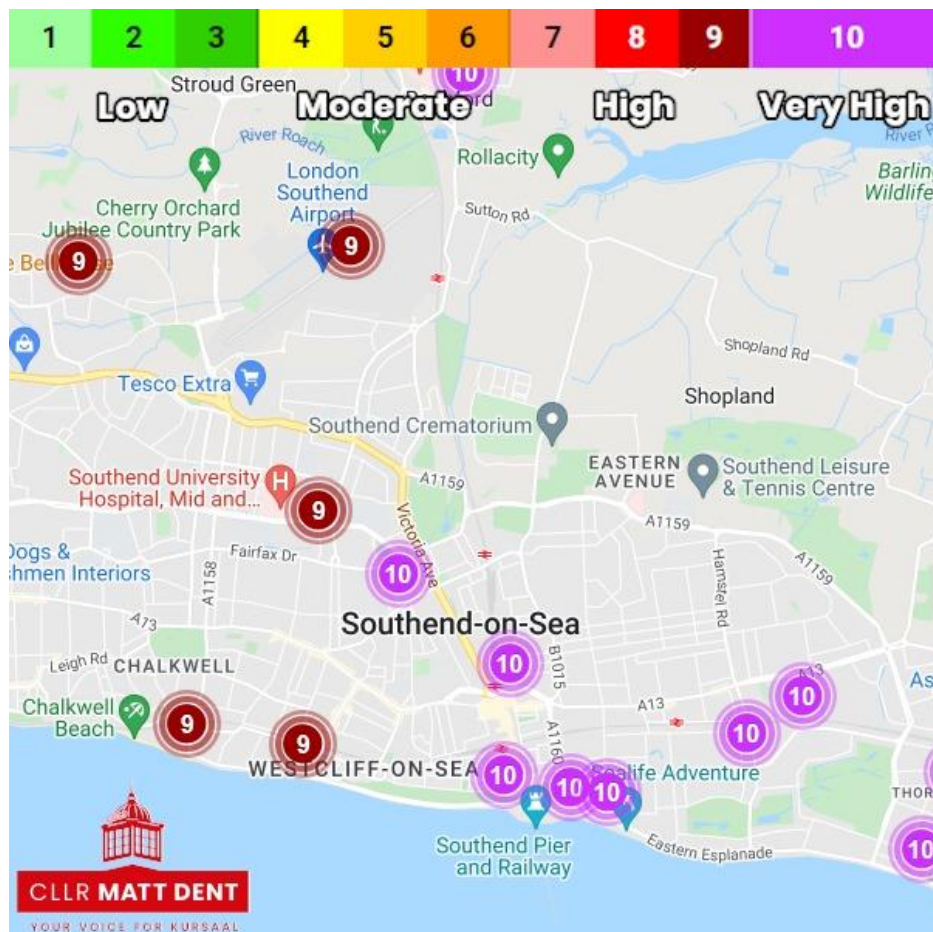
Kursaal Ward



On Saturday 2nd April in Kursaal Ward. Why not come and join us? Equipment provided.
Saturday 10am or 2pm Front gates Southchurch Hall Gardens on Woodgrange Drive.

Very High Air Pollution – Kursaal Ward

On 24th March, Southend experienced very high air pollution with levels reaching of 9 and 10 (out of 10).



The advice for pollution at this level includes:

- ❖ Adults and children with lung problems, adults with heart problems, and older people, should avoid strenuous physical activity. People with asthma may find they need to use their reliever inhaler more often.

- ❖ Reduce physical exertion, particularly outdoors, especially if you experience symptoms such as cough or sore throat.

More information can be found here:

<https://uk-air.defra.gov.uk/forecasting/locations?q=southend>

Grass land Management Changes

The Council will be naturalising some of Queensway grass verges by Stanley Road, as an environmental measure.

This involves allowing the grass to grow longer and carrying out an annual cut and collect, as opposed to regular short cut grass management which provides very little environmental benefit. They will be mowing bands along the edges of the road to keep vegetation clear of the highway.



This is not a budget saving process, but the naturalised grassland areas will support pollinators such as bumblebees and butterflies and will aid the proliferation of wildflowers and plants which in turn attract other insects, birds, and mammals to create a species-rich environment. Species-rich grasslands are critical to delivering the Government's commitments to net zero emissions and nature's recovery. Despite their crucial importance, in the last 100 years, the UK alone has lost 97% of its meadows and other species-rich grasslands.

Some residents, while cautiously supporting the move have voiced concerns that the area could become dumped with furniture and end up looking like waste land. This type of naturalisation requires active management of the area as opposed to simply abandoning it to grow wild. Cllr Matt Dent has said that he will be monitoring this closely as a ward councillor going forward.

SOUTHEND FOOD BANK'S MOST NEEDED ITEMS THIS WEEK



- 🥛 UHT Milk
- 🥫 Tinned fruit
- 🍲 Instant mash
- 🍲 Tinned Irish stew, chicken curry or chili con carne
- 🥤 Long life fruit juice or fruit squash
- 👜 And strong re-useable carrier bags

If you want to get a notification straight to your phone about what is needed and where you can donate, you can use Bank the Food. Installing the Bank the Food app connects you to our most needed items, by pinging your phone when you enter a supermarket that has a foodbank donation point. The app is completely free and was developed in Southend with a local charity supporting Southend Foodbank:

www.bankthefood.org/

COVID-19 IS STILL HERE



New research by experts at the University of Oxford shows that severe COVID-19 infection in pregnant women, particularly in the third trimester, significantly increases the risk of harmful outcomes for mother and baby.

Pregnant women over the age of 30 years, those of Black, Asian or another minority ethnicity and those who are obese or have health conditions, such as gestational diabetes and pre-existing hypertension was identified as being at greater risk of severe COVID-19 infection.

SOUTHCHURCH HALL GARDENS MEMORIAL ROSE PLANTING



On March 1st, following the city status ceremony at the Civic Centre, a small event was held at Southchurch Hall Gardens in Kursaal ward, hosted by the wonderful people at [SHIP](#) (Southchurch Hall Inspirational Planters), to plant a rose bush in the Gardens in memory of Sir David Amess.

Cllr Matt Dent attended and said that it was a lovely little event, and fitting to mark the memory of Sir David on both the day that his dream of Southend becoming a city was realised, and on St David's

Essex Police Local Community Meeting



This month's LCM (Local Community Meeting) with the Police is on Monday 28th at 7pm. This is an opportunity to raise local concerns and hear about the latest operations.

Instead of being at the Civic Centre it will be held at the Police station. An officer will be outside the Civic to signpost if needed.

KILWORTH ESTATE - GRAND BUILDINGS

Porters Grange School

Now that Southend has been granted City Status, we have decided to run a series featuring grand old buildings built within our Estate.

This month the chosen building is Porters Grange Primary School located in Southchurch Avenue.



In 1892 a new School was built to cope with the demands of the growing population, it was named Brewery Road School. Today the school is named Porters Grange School.

Fly-tipping and Rubbish Problems in Kilworth Estate

Some examples of problems encountered in our estate during March



Residents continue to report fly tipping and unkempt properties within our estate, with the hope that we shall eventually see a reduction in such occurrences.

Southend Council News

1st - 31th March 2022

Speech made by The Prince of Wales to mark Southend-on-Sea becoming a City

Speech as delivered by The Prince of Wales in the council chamber on Tuesday 1 March.

Crowds line the seafront for Royal visit and to celebrate becoming a City

Thousands of people turned out in Southend-on-Sea to catch a glimpse of royalty and celebrate Southend-on-Sea becoming a City.

94% of pupils get one of top three choices of secondary school for September

84% of Southend-on-Sea children will start secondary school in September 2022 at their first-choice secondary school.

Construction completed on council's first zero carbon affordable homes

Construction is now complete on Southend-on-Sea City Council's first ever zero carbon affordable homes.

War in Ukraine

Southend-on-Sea City Council has lit its seafront lights in blue and yellow as a show of solidarity following the invasion by forces from the Federation of Russia.

Resurfacing of A127 to benefit our new City

Sections of the A127 will be closed overnight as work takes place to resurface the main road in and out of the City of Southend-on-Sea.

Smokers urged to give quitting another go this No Smoking Day

Smokers considering ditching the cigarettes are being urged to get involved in National No Smoking Day Wednesday 9 March 2022, with around six out of 10 smokers wanting to quit.

LuminoCity shines bright with hundreds of thousands flocking to City

With thousands of people flocking to the City and with social media content reaching nearly one million people.

The Queens Platinum Jubilee celebrations

The first event of its kind in history, Southend-on-Sea City Council are encouraging residents to start planning celebrations for Her Majesty The Queen's Platinum Jubilee.

Our big thanks to local media students

We would like to give a big thanks to the South Essex College students who assisted us in the City Status Ceremony.

City council to seek views on new branding concepts

The council is set to ask for views on four concepts for a new City Council logo as part of a rebrand for the country's newest City.

Ceremonial tree planting for our outgoing Prime Warden as part of Queen's Green Canopy

Our Mace-Bearer planted a tree outside the Civic Centre (Monday 7 March) as his last action as Prime Warden of the Guild of Mace-Bearers.

Official rough sleeper count announced for 2022

The number of people sleeping on the streets of Southend-on-Sea is now at 10, according to statistics from the annual rough sleeper count.

Pavement safety improvements in Westcliff include new trees

Work is underway on several roads in Westcliff-on-Sea to improve the quality and safety of pavements which includes new trees for the environment.

Safer, more accessible roads and pavements with £10m resurfacing programme agreed

Up to 47 roads and 54 pavements will be resurfaced in 2022/23 as part of the council's continued six-year, £60m investment in making roads and pavements safer for residents and visitors.

Selective licensing scheme due to start

A selective landlord licensing scheme which aims to protect tenants and make the private rented sector fairer by improving conditions has now been introduced in nine neighbourhoods in Southend-on-Sea.

Bookings for HAF sessions over the Easter Holidays are now live

School aged children and young people can enjoy Easter fun with the Holiday Activities and Food (HAF) programme, providers in Southend are ready to accept bookings for Easter sessions from 14 March.

New Southend business directory can boost local economy and reduce carbon footprint

A new business directory has been developed exclusively for all Southend based businesses.

Explore the night sky with the reopening of Southend Planetarium!

Residents and visitors are invited to explore the wonders of the night sky as Southend-on-Sea City Council is pleased to announce the reopening of the Southend Planetarium.

PlastiCity award for Southend school pupil

A local school pupil has won a competition to design a logo for PlastiCity as part of a programme of events to help educate our young people on how to recycle plastics.

Safety partners uniting Southend communities against hate crime

Football fans who would like a free ticket to Southend United Football Club's game against Halifax are being encouraged to attend free hate crime awareness sessions in a stand against discrimination.

Improvements made but work to do for SEND transport service

Council-run transport services delivered by joint venture company Vecteo has got better but still needs further improvement says a report to the council's audit committee.

New arts and cultural centre to boost High Street

A community arts complex for creative, educational, and immersive events to support good mental health and well-being is due to open in Southend-on-Sea High Street.

Southend schools wage war on plastic waste

Six Southend schools are blazing the trail for other schools and businesses in the area by collecting their hard-to-recycle plastics for specialist recycling.

Two inspirational children receive certificates of excellence from The Worshipful The Mayor of Southend-on-Sea

Two children looked after by the council have been awarded certificates of excellence by The Worshipful The Mayor of Southend-on-Sea to celebrate their achievements.

Carers First Launch Pocket Guide in Southend-on-Sea

A new pocket guide has been developed by Carers First as part of a new campaign to support 'unpaid carers', particularly those caring for friends or relatives coming home from a stay in hospital.

New and improved Citizens Advice service for City

We have commissioned Citizens Advice Southend (CAS) to deliver a new enhanced Information, Advice and Guidance (IAG) service to support residents.

New Southend Pass options and trade permit available from April

Residents and visitors can benefit from improvements to the Southend Pass from 1 April 2022, with the discounted parking pass set to offer a new one and three-month purchase option.

Highways enforcement team helping to protect City's roads and pavements

Our highways enforcement team has been cracking down on residents and developers causing obstruction or damage to the public highway to provide the City with better and safer roads and pavements.

Council brings together over 30 local authorities for climate resilience workshop

We successfully led an online workshop on building climate resilience with over 30 local authorities taking part.

Council's green city ambitions presented at breakfast meeting

We held our first ever zero carbon breakfast meeting this week (22 March) to present our new carbon footprint and green city ambition.

Southend retains prestigious Purple Flag award for its evening and night-time economy

We have retained the prestigious Purple Flag accreditation for our evening and night-time economy.

Powerful drama helps teens avoid abusive relationships

A hard-hitting theatre piece is helping students in Southend-on-Sea learn to recognise abuse and avoid it in their teenage relationships.

Chapter one apply to become a Summer Reading Challenge volunteer

Southend Libraries are once again looking for volunteers to help keep children reading throughout the summer holidays for the Summer Reading Challenge.

Southend Festival returns: International artists will paint the city with epic street art murals

Southend Festival returns this September with a whole host of amazing events showcasing the city of Southend's vibrant and diverse cultural scene including comedy, art, music, children's events and much more.

New health and care jobs training and skills programme launched in Southend

We have secured funding from the Government's UK Community Renewal Fund for a pilot project investing in skills and training for the healthcare sector and supporting people into employment.

