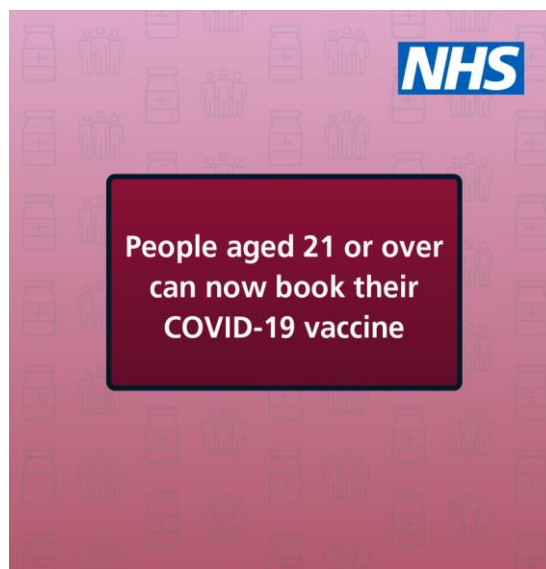




K.E.R.A Newsletter

15th June to 30th June 2021

Vaccines for the people aged 21 or over

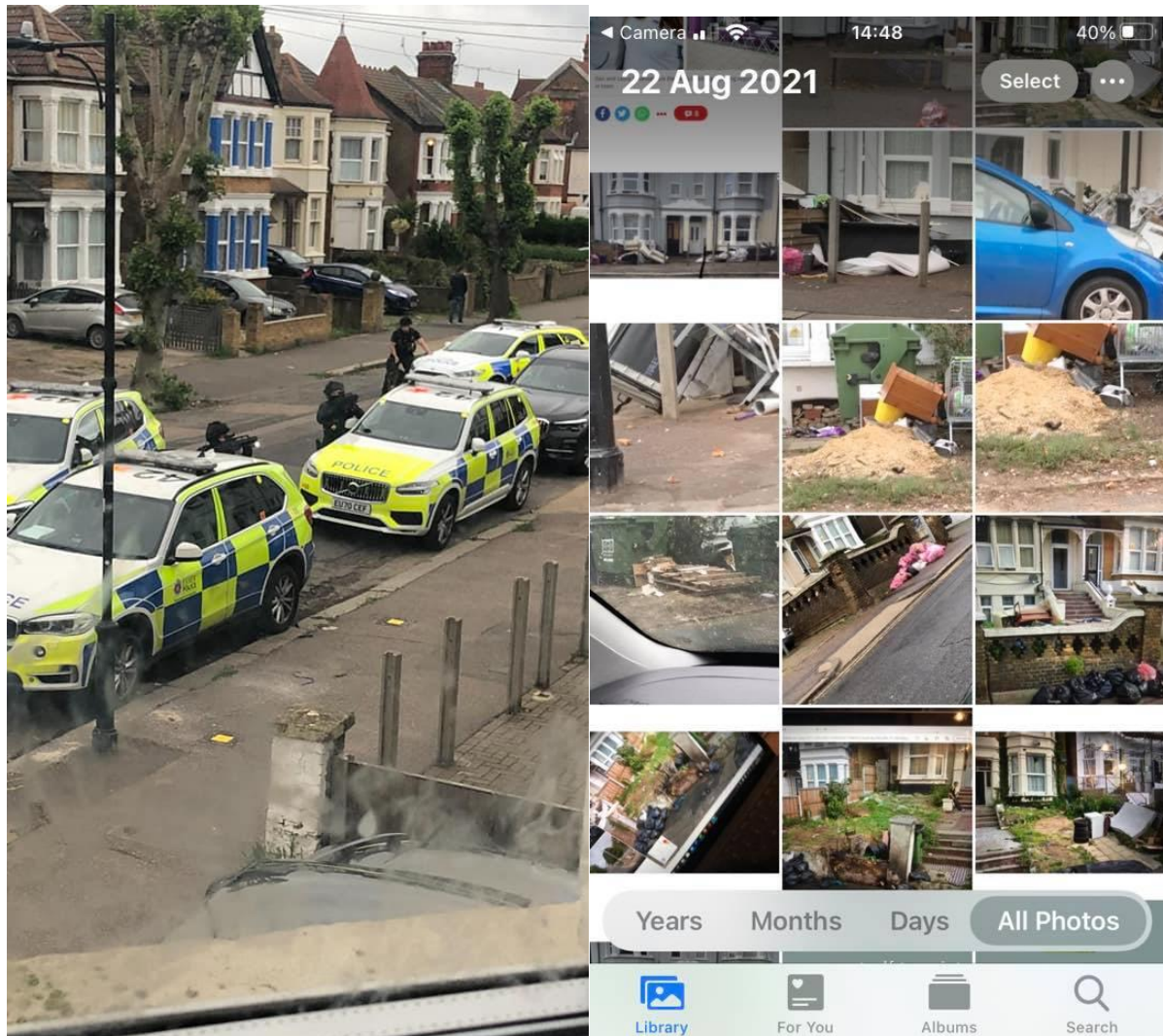


People aged 21 or over
can now book their
COVID-19 vaccine

If you have trouble booking a vaccine (location or times not suitable etc) please keep trying! New appointments seem to be released in the morning <https://www.essexcovidvaccine.nhs.uk/>

More trouble at Number 10-12 Kilworth Avenue

Swarm of armed police with dogs attending another problem at this property.



A few shots of this landlord's front gardens, kept in the most appalling state, devaluing the local housing stock, abusing other residents mental and physical health and indicating to his tenants that this is not an area to be respected.

Disturbing to see his property development business stemar.co.uk describing his new builds as being in highly desirable areas and chooses to leave his properties on the Kilworth Estate like this.

Competition! 🏆🏆🏆

MAKE SOUTHEND SPARKLE



Can you Make Southend Sparkle?

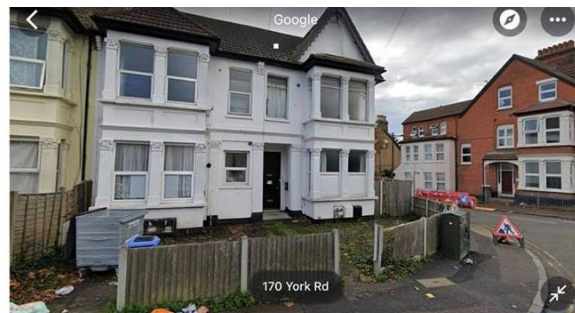
Categories include best hanging basket, best balcony (visible from the street), best front garden, best school grounds, best street.

Get out those geraniums have a sweep and tidy and get entering!
(There will be prizes)

The closing date is now Monday 5th July (close of play)

Details: <http://orlo.uk/Gvk1j>

Local Kilworth Estate Residents' suggestions for making Southend Sparkle



Replace the broken wooden fence with wrought iron as it is more durable and looks better.

Plant shrubs to soften the urban environment, clean the air and hide the bins

Replace bins with black or paint them.

Use garden single and double gates where necessary

Make fencing at least 4'6" high to stop fly-tipping.



Southend Council is currently planning for the next tree planting season in November, and I'm very keen to hear from Kursaal ward residents where in the ward they want to see new trees planted.

PLANNING TREE PLANTING IN SOUTHEND FOR 2021-22

Cllr Matt Dent said - Climate change is the great challenge of our age, something which I'm proud that Southend Council have recognised by declaring a climate emergency. There are a lot of things that we can and need to do to address it, and planting trees is an important part of that. Between 1 April 2020 and 31 March 2021 Southend Council planted 966 trees. The planting season runs from November through to March, so the Parks team at the Council are currently planning where to plant. I'm keen to make sure that Kursaal ward gets its fair share of new planting. There are a number of constraints to be considered when planting a new tree. These include the presence of services below or above the proposed planting location, maintaining safe sight lines, the available space and the obscuration of traffic signals and road signage. The aim is to ensure that we plant the right tree in the right place to give it the best chance to thrive, and as per the councils Tree Policy those areas with the lowest canopy cover will be prioritised when possible.

If any Kursaal residents have suggestions on where in the ward they'd like to see new trees planted, then please drop your ideas in the comments below or let me know by email at cllrment@southend.gov.uk.

Previous correspondence with the council regarding the replanting of trees along York Road and Southchurch Avenue

Thank you for completing form Make a Comment, Complaint or Compliment . This has been passed to the relevant department to action.

Your Service Request number is 9179346 please keep a note of this in-case we should need to trace your report. A copy of the information you have supplied in relation to this Service Request shows belowSouthend Council Response

Your Recent Enquiry 9179346

Dear Mrs Watson

Thank you for your enquiry regarding planting of trees along York Road and Southchurch Avenue.

It has been a while since trees were in either road and there may be a reason for this, which we are going to look into.

We are going to consider more planting in this area, but it will depend on underground utility searches to see if planting is possible.

We would like to thank you in taking the time in contacting Southend Borough Council.

Culture Business Support
Southend-on-Sea Borough Council



Date & Times: Wednesday 30th June 2021, 2pm - 3pm & 6pm - 7pm. [Book now](#)

We would like you to be part of an exciting opportunity to join the #OneSouthend 2021 Summer Community Festival. One Southend is an online wellbeing platform offering interactive events, community-led content and information about our valued local partners and residents.

The Festival Celebrates Southend's achievements, showcasing vibrant and diverse communities, sharing stories of strength, working together both virtually and locally. The festival will be held throughout August 2021 sharing information and activities for residents to enjoy and participate in.

"YOUR RUBBISH, YOUR RESPONSIBILITY"



A new anti-litter campaign reminding residents and visitors to take responsibility for their litter and to have pride in the town's beaches, parks and open spaces is launching in Southend-on-Sea.

The Council is running the 'your rubbish, your responsibility' campaign to encourage residents and visitors to use litter bins, and to stop and think about the impact littering has on the environment and local wildlife.

RESIDENTS CALL ON COUNCILLORS TO INITIATE STREET WEEDING



Southend Council News – 15th June to 30th June

Keep going and remember COVID is still with us

With the Prime Minister confirming last night that stage 4 of the roadmap is being delayed until 19 July, residents are being urged to continue acting with caution and take up the offer of a vaccine.

Protect children as part of Clean Air Day 2021

Protecting our children's health from air pollution is the focus for this year's national Clean Air Day 2021, which Southend-on-Sea Borough Council is proud to support.

Bookings for children's summer holiday fun sessions now open!

Schoolchildren can enjoy a summer of fun as the Holiday Activities and Food (HAF) programme providers in Southend-on-Sea are now ready to accept bookings for summer sessions.

Seafront summer volunteers are back!

Beach welfare officers have been busy patrolling the shoreline making sure residents and visitors have a safe trip to Southend's seafront.

Staff thanked for hard work over scorching weekend

Council and Veolia staff have been thanked for their incredible efforts over the hottest weekend of the year, which saw tens of thousands of visitors flock to Southend's seven miles of coastline.

Schoolchildren: please keep testing

Our Director of Public Health is asking parents and carers continue to encourage the young people in their household to test regularly following a recent slight rise in infection rates within schools.

Tell us the priorities for SEND children and young people in Southend-on-Sea

A survey has been launched giving young people, families and professionals the chance to have their say on the priorities for the new Southend SEND Strategy for children and young people with Special Educational Needs and Disabilities (SEND).

Southend: Look out for each other

Ahead of the weekend, and the Euros tonight, District Commander Ian Hughes and Southend-on-Sea Borough Council's cabinet member for public protection, Cllr Martin Terry, have a message for Southend.

Key worker permit extended until end of July as council supports NHS and care staff

A temporary permit allowing NHS health and care workers carrying out essential work during the pandemic to park in council owned car parks and on street bays has been extended until the end of July.

Can you Make Southend Sparkle?

Make Southend Sparkle is running a community campaign to encourage residents and businesses to take pride in the town during the first two weeks of July.

Revisit finds Southend SEND services have made progress

An Ofsted and CQC revisit to special education needs and disabilities (SEND) services in Southend-on-Sea has found sufficient progress has been made in three out of four areas of significant weakness.

Parliamentary Constituencies Boundary Review 2023

Did you know that Parliamentary constituencies are set to change?

Council seeking head of climate change to achieve a carbon neutral Southend

We are looking for a head of climate change as we continue our drive to become carbon neutral by 2030.

‘Your rubbish, your responsibility’ - New anti-litter campaign takes off

A new anti-litter campaign reminding residents and visitors to take responsibility for their litter and to have pride in the town’s beaches, parks and open spaces is launching in Southend-on-Sea.

Keeping residents Covid-safe with site visits to businesses

We will be working with the Health and Safety Executive (HSE) to contact and visit businesses across the Borough to ensure they are Covid-secure, keeping staff and customers safe and well.

Southend-on-Sea set to host prestigious women’s cycling race

Southend is set to host the fourth stage of world-renowned cycle race, The Women’s Tour, in October 2021, welcoming hundreds of elite level female athletes to the Borough as part of the event.

Council hops on to support Hares About Town

Two of the hares in the Hares About Town Art Trail – Rusty and Hare’s Magic – are being sponsored by Southend-on-Sea Borough Council.

Featured Southend Council Consultations

[Your Say: Adult Social Care Southend](#)

[Parks and Open Spaces](#)

[Southend Faith and Belief Festival](#)

[BBQ in Public Areas](#)

[Southend New Local Plan](#)

Government Feedback

[Parliamentary Constituencies Boundary Review 2023](#)

