



TAXIWAY A-D1-E

Construction Administration & Inspection

POINT OF CONTACT

Naomi Hobbs
(907)723-8245

PROJECT WEBSITE

www.JNUTaxiways.com

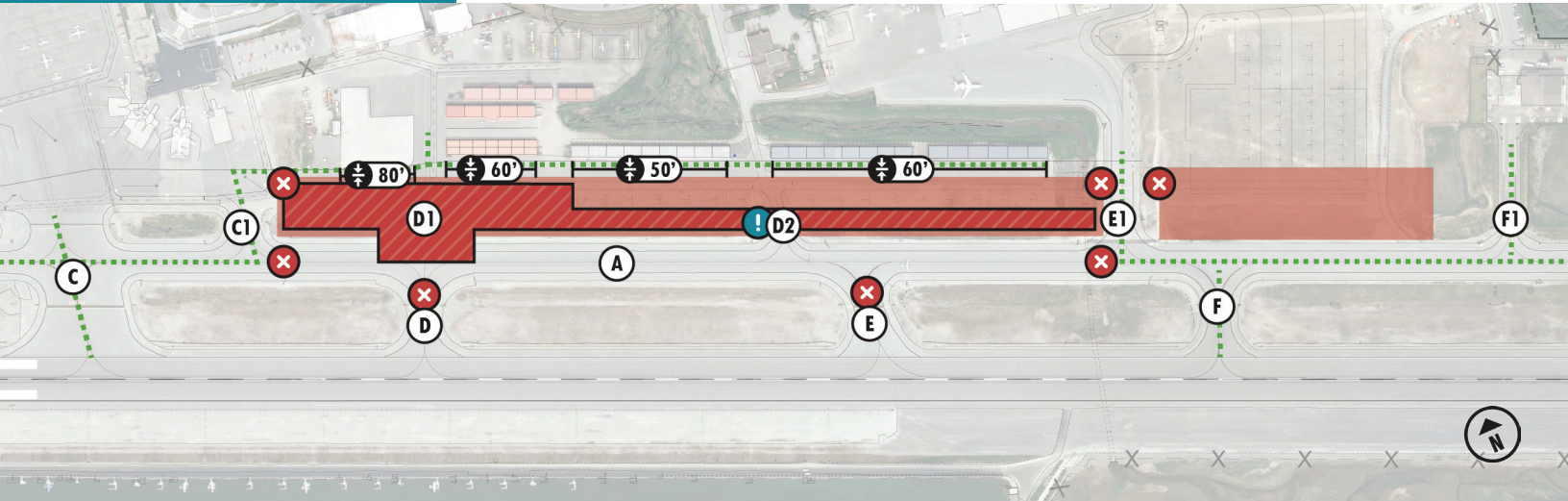
AIRPORT SAFETY

(907)500-8234

PHASE S1

- Closed Work Area
- Emphasis Area (*Completed at End of Phase*)
- Open to Air Traffic

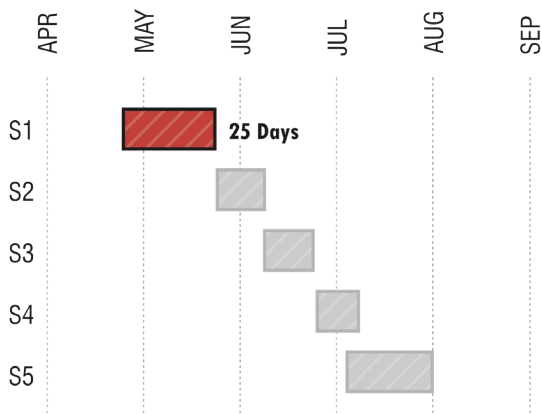
- ✕ Closure
- ! ARFF Access
- ± Wing Restriction



PHASE S1 OVERVIEW

Work for Phase S1 includes pavement rehabilitation, taxiway (TWY) D1 relocation, infield ditch regrading C1 to E1, drainage improvements, some lighting and signage installations, and culvert replacement across TWY A.

DURATION (APR 27-MAY 22, 2020)



IMPORTANT INFORMATION

- Work will start in the infield with asphalt removal, electric demolition, and excavation.
- Taxilane H will not be commissioned this season. Vehicle service road only; unmarked apron.
- Revised taxi routes for tenants in this area: MNO, Ward Air, and Alaska Seaplanes.
- No night work; access routes available 24/7.

IMPACTS

- Taxiway A closed between TWY C1 and E1.
- TWYS D, D1, D2, E closed.
- Aircraft Rescue and Firefighting (ARFF) access route provided through work area near D2.
- Runway backtaxi may be required.
- Wingspan restrictions vary 80-50; Signage coming soon.
- No hangar access to E1; route through C1.