

# Simply Sacred *with Auroara*

Bridging Health Research & Community Healing

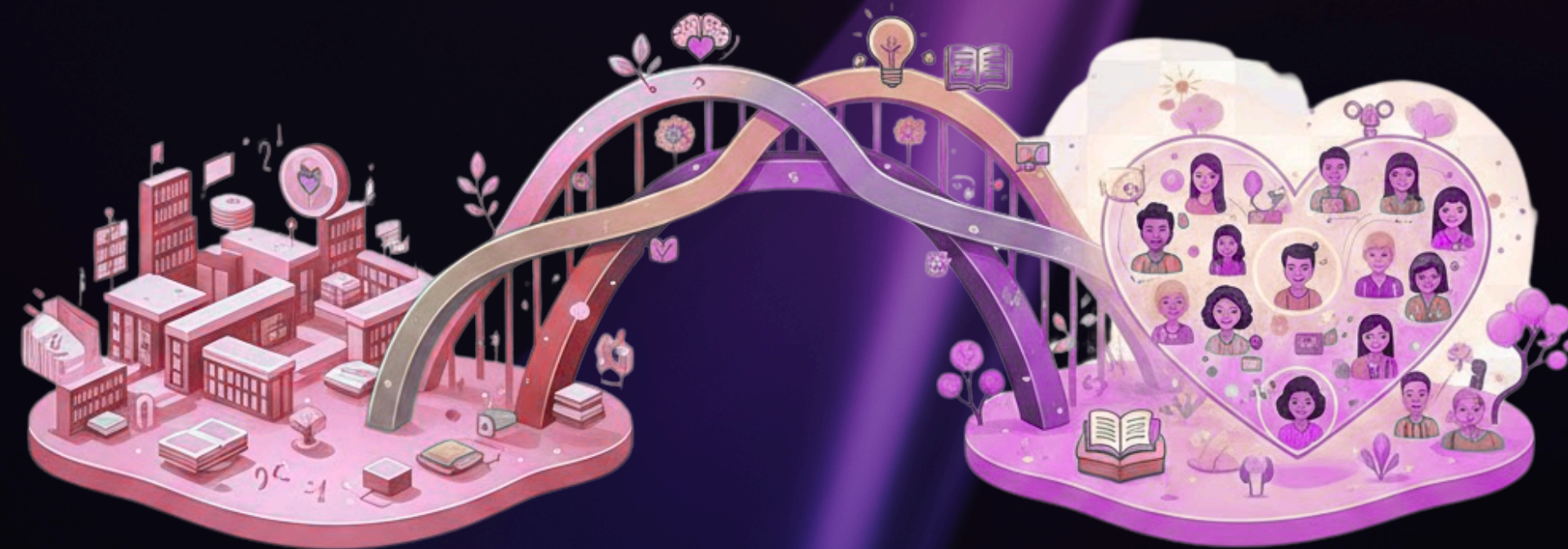


# The Simply Sacred Series

## *Knowledge Translation for the People*

### The Mission

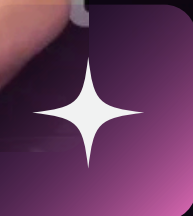
The *Simply Sacred* talk show serves as a critical bridge between academia and the community. We translate complex health research into accessible, heart-centered dialogues that empower everyday people to take charge of their wellness and understand the social determinants of health. Broadcasting on Rogers Community Television (BC) and YouTube, we ensure our message reaches both local households and a global digital audience.



# Meet *The Host*

Auroara Leigh is a Wellness Anthropologist and the founder of *Simply Sacred Solutions*, a consulting company that bridges social health research with creative pathways for healing. She specializes in heart-centered leadership, translating complex data into courageous conversations that drive social change."

- ✦ She has taught lateral kindness to policy makers at the Public Health Agency of Canada.
- ✦ She led the way as a *Decolonization Curriculum Developer*.
- ✦ With a background in Medical Anthropology, Auroara ensures that all talk show episodes are both educational and transformative.



# Sponsorship *Tiers*



## POPLAR TIER

Investment: \$10,000 CAD or more

The highest level of partnership, providing maximum brand visibility and elite alignment with our mission.

- ✦ Includes all benefits of the Spruce and Cedar tiers, plus:
- ✦ Prime Introduction Placement: A verbal "Thank You" and brand shout-out during the broadcast's live introduction.
- ✦ On-Air Brand Integration: Auroara will wear your branded apparel (hat, shirt, or pin) or feature your logo prominently in the studio set during the show.
- ✦ Premier Website Branding: Your logo will be featured at the top of our "Partners" page as a Title Sponsor.



## SPRUCE TIER

Investment: \$5,000 to \$10,000 CAD

A significant partnership for those committed to community-level knowledge translation.

- ✦ Includes all benefits of the Cedar tier, plus:
- ✦ Closing Credit Acknowledgment: A dedicated "Thank You" and logo credit in the broadcast's closing scroll.
- ✦ Standard Website Listing: Your logo will be listed as a sponsor on the Simply Sacred website with a direct link to your organization.
- ✦ Social Media Mention: Inclusion in episode-specific promotional posts.



## CEDAR TIER

Investment: Quarterly  
Commitment for 1-3 years

Our consistent, recurring partners who ensure the show's longevity.

- ✦ Ongoing Connection: A quarterly commitment option (every three months) to sustain the broadcast.
- ✦ Network Recognition: Early access to episode topics and the opportunity to suggest research areas for translation.
- ✦ Community Listing: Name listed on credits.
- ✦ Note: Amount & benefits agreed upon in discussion. Contact us for more information.

# How your investment *actually works*

To translate complex health research into a professional, heart-centered talk show, we maintain high standards of production. Your sponsorship directly funds the essential elements required to bridge the gap between "data" and "community wisdom."

Your support fuels the following pillars of production:

- ✦ Expert Voices: Honorariums for Elders, researchers, and survivors.
- ✦ Professional Set: High-end lighting, staging, and a "Simply Sacred" aesthetic.
- ✦ Quality Editing: Skilled video editors to ensure the content is "TV-ready."
- ✦ On-Camera Excellence: Professional hair, makeup, and styling for a high-caliber brand.
- ✦ Strategic Promotion: Ad campaigns to reach marginalized groups and policy-makers.
- ✦ Learning Tools: Practical "cheat sheets" and resources for viewers to use at home.



# Let's translate knowledge

” Help us take research off the shelf and into the hearts of our community. By choosing a partnership tier, you are seeding a legacy of wisdom, kindness, and collective health.

*into Action!*

ARE YOU READY TO CONTRIBUTE TO WELLNESS IN OUR COMMUNITY?

- ✦ Select Your Tier. Choose the level of impact that aligns with your goals.
- ✦ Schedule a Briefing. Let's discuss the upcoming season's topics. (Optional)
- ✦ Email [simplysacred.coordinator@gmail.com](mailto:simplysacred.coordinator@gmail.com)

For direct support and sponsorship:



Connect with me on my socials!

 [Simply Sacred Solutions](#)

 [simplysacredsolutions](#)

 [Simply Sacred Solutions](#)

WATCH OUR  
RECENT EPISODE  
ON [YOUTUBE!](#)